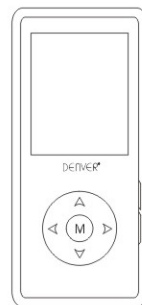


DENVER

DENVER®

## MP4 Player



## User's Manual

MPG-2017PLL

MPG-4017PLL



ALL RIGHTS RESERVED,COPYRIGHT DENVER ELECTRONICS.

[www.denver-electronics.com](http://www.denver-electronics.com)

# User's Manual

## Content

Precautions.....	2
Security warnings.....	3
Features.....	4
Product view and key functions.....	5
Basic operation.....	6
Main interface icons and operation.....	6
Instruction of music slide show tool.....	8
Instruction of video convert tool.....	8
External connection.....	8
Specifications.....	9
Troubleshooting.....	10

## **Preface:**

Before operating the unit, please read this manual carefully.

## **1. Precautions:**

### **Charging Indications**

- 1) In the process of charging, the symbol of the rechargeable battery is moving back and forth. When fully charged, the symbol will be at full display and stop walking. In order to ensure adequate electricity, the proposed charging time should be no less than three hours.
- 2) Charging by connecting USB, the proposed charging time should be no less than four hours for the output of PC's USB is 5V.

### **Notes:**

- A. No matter using charger or USB for charging, the time should be no more than 6 hours, or it may cause the damage of the battery.
- B. For better protecting the battery, it is proposed charging by the charger in the condition of switch **“OFF”**.

## **2. Security warnings:**

- 1) Keep a long time listening to the high volume will lead to severe hearing impairment. The experts recommended that please care your hearing, and when there are problems found with your ears please decrease the volume or stop using the player.
- 3) Do not use headphones when you are riding a bike, driving or walking (especially when crossing the road), so as to avoid traffic accidents.

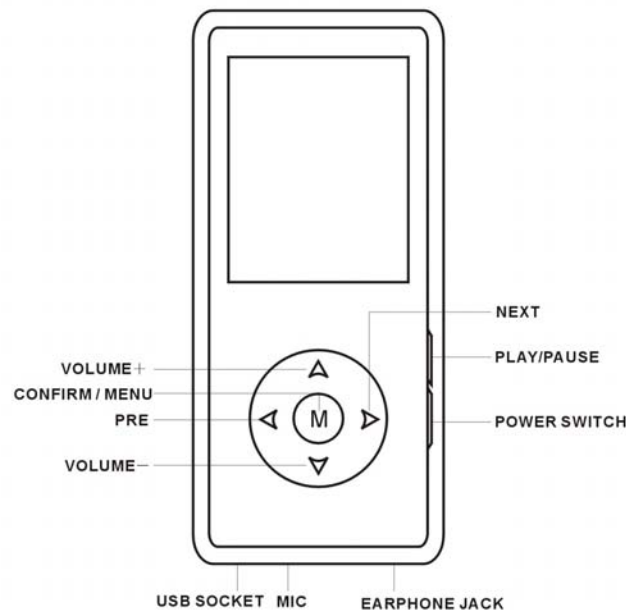
## **3. Features:**

- 1.8-inch 128\*160 dot matrix true color TFT display;
- Support MP3, WMA, WAV and other audio formats;
- Support synchronized lyrics display;
- MTV movie playback (with video conversion tools packed with the unit);
- Support JPG, BMP format picture browsing, and support the automatic browsing functions;
- Built-in functions of games;
- FM radio which storage 30 channels;
- Built-in microphone, ultra-long time recording;
- Energy-saving settings, brightness display, automatic shutdown, and other free settings;
- 7 kinds of EQ sound, a variety of recycling options;

- Support TXT E-book reading, preservation of the current bookmarks when exit ,
- automatic browsing;
- USB2.0 HIGH SPEED;
- Support multiple languages;
- Support WinME, Win2000, WinXP, Vista system;
- Mobile U-disk functions;
- Support firmware upgrade;
- Convenient button locking and unlocking functions;

# 4. Product view and key functions

## Product view



The basic functions of the keys:

Name for Keys	Icon	Functions and Operations
PLAY	▶	PLAY Play/Pause At document lists short pressing “PLAY” back to the

		pre-content. At main interface short pressing "PLAY" to realize "lock/unlock". At any state long pressing "PLAY" to switch off.
PRE	<	At documents player and lists short pressing for previous document, song, pictures etc. When playing music or video, long pressing for fast-rewind.
NEXT	>	At documents player and lists short pressing for next document, song, picture etc. When playing music or video, long pressing for fast-forward.
VOLUME	▲	Volume up
VOLUME	▼	Volume down
POWER SWITCH	OFF/ON	Turn to ON, short pressing PLAY to start the player. At any state, long pressing PLAY, then turn the switch to the OFF to stop the player.
MENU	M	Confirmation key / Menu key Long pressing directly back to the main interface; short pressing enter the menu.

## 5. Basic operation

**Power on :** Transfer to **ON** power switch positions of the player, short pressing **PLAY** button, the player reveal the startup screen to enter the main menu interface.

**Power off :** In any state, it will power off after five seconds by long pressing **PLAY**. If the player will not be used for a long time, please transfer power switch to **OFF** position.

**Lock key:** In the main interface, short pressing the **PLAY** to lock and prompt "Please click PLAY again" to unlock.

**AB**

**repeat:**

In the music player state, long pressing the "**M**" button, enter the repeating mode, the interface mode icon "**A-**" will be displayed at the upper left, recognized as the starting point of repetition. And then long pressing the "**M**" button, "**A-B**" point will appear, recognized as an end point of the repetition, this video icon "**A-B**" fixed to begin repeating "**A-B**", then long pressing the **M** button to cancel repeating "A-B".

**Connecting the computer and transferring data file:**

Starting computer, then connect the player with the computer USB connector port through an USB cable, as it can be used as a removable disk. You only need to drag and drop files directly to the player, and do not need any third party procedures to achieve these.

## 6. Main interface icons and operation



**MUSIC**



**VIDEO PLAYER**



**START RECORDING**



**RECORDER**



**RADIO**



**PICTURES BROWSING**



**SETTINGS**



**E-BOOKS**



**GAMES**

### **Music:**

In the main menu interface, select "**Music**" option and short pressing "**M**" button to enter the "**Music**" interface.

### **Play the songs:**

In the music interface, short pressing "**PLAY**" to start playing music. Short pressing "**M**" button to enter the music sub-menu, where has **Repeat mode, Equalizer, 3D, Play Rate, File Browse, Classification, Slide show** and other sub-menu for the adjustment.

### **Volume adjust:**

In the music interface, short press "**▲▼**" to adjust the volume up or down, long pressing "**▲▼**" can increase or decrease the volume continuously, stop to adjust after loose your hand.

### **Synchronized lyrics:**

The player supports lyric files with \*.LRC suffix, and displays synchronously

Please make sure the lyric has the same name with the music

For example: Music file: My heart will go on.mp3

Lyric file: My heart will go on. lrc

### **Repeat mode:**

In the music interface, short pressing “M” to enter, and short press “> <” to select the repeat mode menu, there are: **No repeat, repeat one, repeat all, random all, Dir Repeat, Dir all Repeat, Dir random all** options, short pressing “M” to confirm and return to the previous menu.

### **Equalizer:**

In the music interface, short pressing “> <” to select Equalizer, and short pressing “M” to enter, there are : **Normal, Pop, Rock, Classic, Jazz, Bass, Custom EQ** ect options for selection. Short pressing “M” to confirm and return to the previous menu.

### **3D:**

In the music interface, short pressing “> <” to select **3D** menu and short pressing “M” to enter, there are: **OFF / ON** for option, short pressing “M” to confirm and return to the previous menu.

### **Play rate**

In the music interface, short pressing “> <” to select **Play rate** menu and short pressing “M” to enter, there are: **0.67X , .80X, 1.00X,1.14X, 1.33X** for option, short pressing “M” to confirm and return to the previous menu.

### **File Browse**

In the music interface, short pressing “> <” to select **File Browse** menu and short pressing “M” to enter the files list interface, short pressing “> <” again to select files, after select the music files , short pressing “M” to enter the music interface.

### **Classification**

In the music interface, short pressing “> <” to select **Classification** menu and short pressing “M” to enter, will appear a pop-up dialog box : **“Refresh”**, short pressing “> <” to select “ Yes”/ “No”, return the music interface and do the same operation to select

“**Classification**” ,there are Genre, Artist, Album, Title for option.

### **Slide show**

In the music interface, short pressing “> <” to select **Slide show** menu and short pressing “**M**” to enter, there are : **Off, 5 seconds, 10 seconds,15 seconds ,30 seconds,60 seconds** etc for option, short pressing “**M**” to return to the previous menu.

### **Video:**

In the main menu interface, selecting video player main interface, short pressing “**M**” to enter the video player list interface, short pressing “> <” to choose the video file, after short pressing the “**M**” to enter the folder, short pressing the “**M**” button again to enter the video player interface.

### **Fast forward or fast rewind**

When playing the video files, long pressing “> <”to **Fast forward or fast** rewind.

### **Volume adjust:**

In the video interface, short press “**^V**” to adjust the volume up or down, long pressing “**^V**”can increase or decrease the volume continuously, stop to adjust after loose your hand.

In the video player interface, short pressing “**M**” to enter the sub-menu where has the options for **Repeat Mode and Subtitle color**.

#### **Repeat**

Select the Repeating menu, short pressing “**M**” to enter, there are: **No repeat, repeat one, repeat all, random all, Dir Repeat, Dir all Repeat, Dir random all** for option, short pressing “**M**” to return to the video play list interface.

#### **Subtitle color**

In the video player interface, select “**Subtitle color**”, short pressing “**M**” to enter, there are : yellow, gray, red, green, blue, cyan for option, short pressing “**M**” to return to the video play list interface.

**Note:** The video files need to be converted by the video conversion which is packed with the player before stored into memory disk for common play.

### **Game:**



In the main menu interface, choose "**Game**" option and shortly press "**M**" to enter the game file list interface.

There are two built-in games: "**Gobang**" and "**Pontoon**".

Operations:

In the file lists interface of game, short pressing "> <" to choose the game files;

After the game is selected, short pressing "**M**" to enter the sub-menu, short pressing "**M**" again to enter the game interface.

In the game state, short pressing the "**M**" to show the "**continue**" and "**exit**" menu items, short pressing "**M**" to identify.

### **Photo:**

In the main menu, select the "**Photo**" and short pressing "**M**" to enter the picture browse file lists interface.

In the picture browse file lists interface, if folder shows, short pressing "**M**" again to enter.

Short pressing "> <" button to select image files, short pressing "**M**" to enter the picture browse interface.

Short pressing "> <" to change pictures, short pressing "**PLAY**" to automatically browse the pictures.

### **FM Radio:**

In the main menu interface option, select "**FM Radio**" option and short pressing "**M**" to enter the radio interface.

**Auto** **search:**

In the radio interface, short pressing the "**M**" to pop up radio menu.

Short pressing "> <" button to automatically search for the radio, short pressing "**M**" to enter the radio automatically search interface and start search from 87.5-108 MHZ, during the search process, the channels are automatically saved.

### **(Manual search) Save preset:**

In the radio interface, short pressing "> <" manually to search the radio frequency, upon receipt of the appropriate frequency, short pressing the "**M**" to pop up radio menu, choose the radio chosen to store, short pressing "**M**" to enter the radio channels lists interface, short pressing "> <" to select a channel, then short pressing the "**M**"

to pop-up **save preset** dialog, choose "**yes**", the current radio is stored.

#### **Listen to Radio:**

In the radio interface, short pressing "**PLAY**" to change to preset radio channels interface, short pressing "> <" to listen to the radio.

#### **Delete the radio:**

In preset radio channels interface, short pressing the "**M**" to pop-up reception menu. Choose deleting the radio, short pressing "**M**" to enter the radio channels lists interface, choose the channels you want to delete, and short pressing "**M**" to pop-up delete dialog, choose "**Yes**" then, short pressing "**M**" again to confirm.

#### **Radio recording:**

When listening to the radio, long pressing the "**M**" to exit from the main interface of radio, short pressing "> <" to start sound recording, short pressing the "**M**" to start radio recording. During recording process, short pressing "**PLAY**" to pause recording, short pressing "**M**" again to store the record file.

#### **Start to record:**

In the main menu interface to choose the option of **Start to record**, short pressing "**M**" to start microphone recording, during the process, short pressing "**PLAY**" to pause, short pressing "**M**" to save the record file.

#### **Record:**

In the main menu interface select recording pen option, short pressing "**M**" to enter the voice play interface. Short pressing "**PLAY**" to play the voice, short pressing "**M**" to enter the voice menu list interface, there are Repeat Mode, Equalizer, 3D, Play Rate, File Browse to choose.

#### **EBook:**

In the main menu, select "**Ebook**" option, and short pressing "**M**" to enter the e-book file list interface, Short pressing "> <" to choose e-book files you want to read, short pressing "**M**" to read the current e-books.

In the E-book browse interface, short pressing "> <" to read e-books by pages.

Exit from the current e-book; the current e-book reading position is preserved. Next time to browse, it will automatically enter the preserved position.

Description: Bookmarks only are effective to the current position of e-books. If reading other files, the bookmarks will redefine the new positions.

## Setup:

In the main menu to choose “**Setup**” option, short pressing “**M**” to enter the menu lists interface.

Short pressing “**>** **<**” to choose items, short pressing “**M**” to enter the selected items, and short press “**M**” to confirm. Short pressing “**PLAY**” can return to the previous menu step by step.

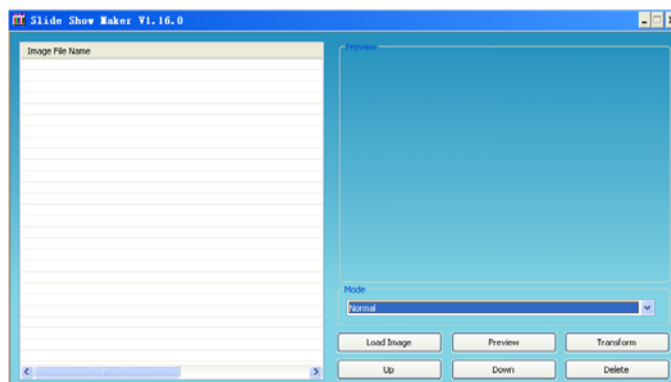
The menu of settings consist of power, language, display settings, record settings, system tools options.

## 7.Instruction Music slide show tool:

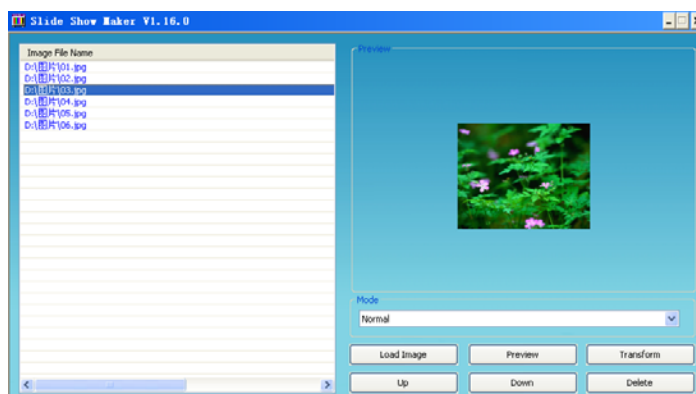
1. Open the Music slide show tool: “**SlideshowMaker\_V1.6.0**”, double click icon:



to open the tool window, as below:

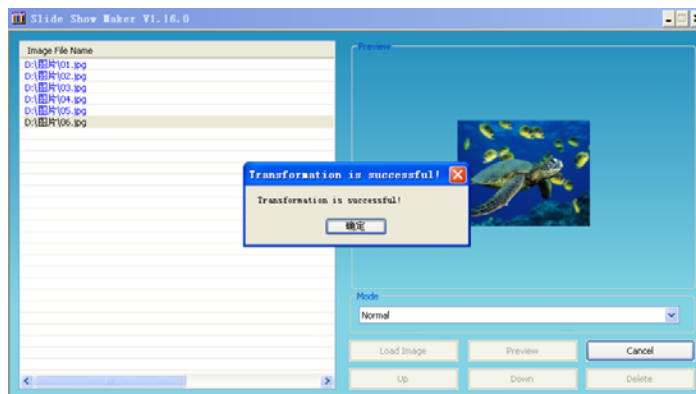


2. Right click: “Load Image” to load \*.jpg, \*.gif, \*.bmp pictures, as below:




3. Select slide show mode at the “ Mode” menu on the right side.

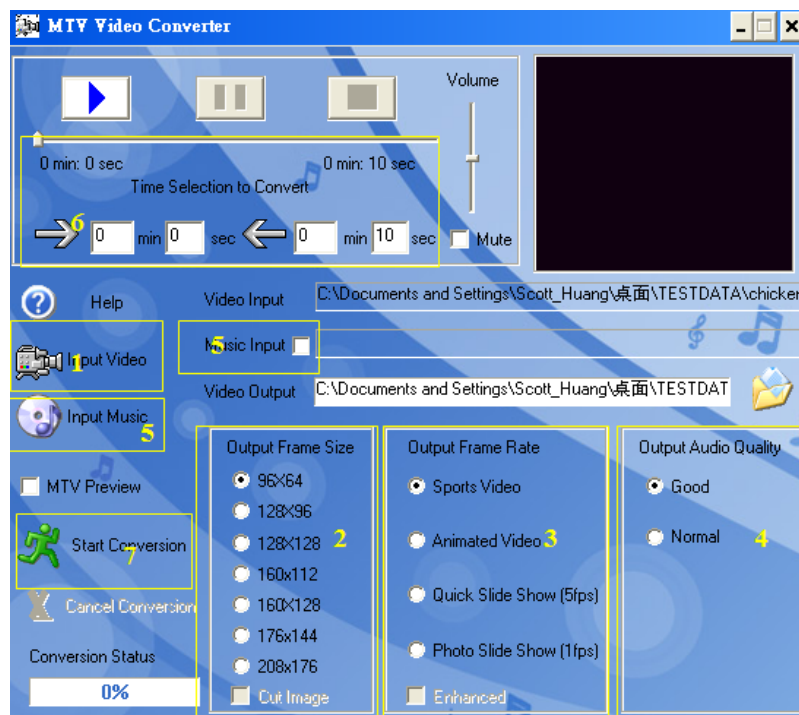
- Transfer the file and save as files: \*\*.sls, as below:



- Copy the file to the SLS folder in the disk.
- Start up the player, select slide show when playing music, after select the switch time by short pressing “M”, when short pressing “PLAY” to play after return to the music interface, such like: select 5 seconds, then you can see the picture played as slide show after 5 second while play the music.

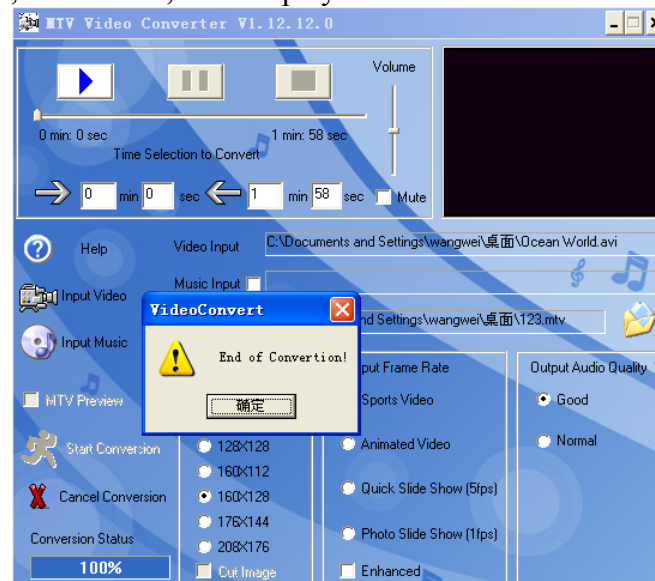
## 8.Instruction of video convert tool:

- Find the convert tool in the attached disk, and copy this file to the computer.
- Double click “Video Convert” folder , and double click  VideoConvert to open the tool interface, as below:



Operation step:

- a). Input video files
- b). Choose output video size.  
e.g. if display screen resolution is 160\*128, then choose 160\*128
- c). Choose output video frequency (Default is ok)
- d).. Choose output sound quality(Default is ok)
- e). Input music files to take instead original video files` background sound, if you want to save original video files background sound, then no need.
- f). Choose a period to convert, if you want to convert whole video files, then no need to set
- g). Start convert, after finish, then display as below



Attention:

On a computer through the "video convert tool" for conversion, user can completed the copy of the converted video files to the inner disk of the player for normal watching.

If your Windows System no load related video decode, please load related decode, or select Decode folder in CD before load `Video Convert Tool`

## 9. External connection:

### Computer connection and data file transfer:

This product is blessed with high-speed USB2.0 interface, the standard mobile U-disk functions. After the cable is connected to the computer (wait a few seconds), the USB power supply and USB data transmission can be realized. When the player enters into the USB interface, it can be used as a U-disk, you only need to drag and drop the music as you like directly into the players, and no third party procedures are required.

### Operation of players under different conditions and the different computer connections:

When start up the player, if in the main interface state, insert the USB cable for connection, the players and the computer are automatically connected, pop up a computer disk, as U-disk. The player enters into the USB data connections interface,

data file transfer can be achieved, and the player is charged simultaneously. If insert USB cable in the running process of other programs, the system will turn off all applications in the operation, and enter into the USB connection interface.

When power off the player, connect player via a USB cable to the computer, pop up a computer disk, the player enter into the USB data connections interface, data file transfer can be achieved.

### **Charge:**

Use rechargeable battery charger, it is proposed to turn the switch of the player to the **ON** position, connect the USB cable of the charger, the screen will show the charge icon, the icon will turn green and stop moving when charging is completed, the proposed charging time should not be less than three hours.

Using a PC for charging, it is proposed that connect the player via USB cable to the computer, pop up a computer disk, the unit enters into the USB data connections interface, and the battery icon in the upper right corner of screen is moving which means charging begin. After fully charged, the battery icon stops moving, which indicate that the battery is full. Connecting a PC for charging, the proposed charging time should not be less than four hours for the PC's USB output is 5V.

In addition, at the power off status, the unit can be charged at any states when switch the player on **ON / OFF** position.

## **10.Specifications**

<b>Items</b>	<b>Parameters</b>
<b>Display screen</b>	1.8-inch screen, 128*160 dot matrix true color TFT screen;
<b>Video specifications</b>	MTV movie playing video format (fringe video conversion tools packed with the unit)
<b>Image format</b>	support JPG, BMP format picture here, support the automatic picture functions;
<b>Text format</b>	TXT
<b>Audio range</b>	MP3(bit rate 8kbps-320kbps sampling rate 8khz-48khz) WMA(bit rate 5kbps-320kbps sampling rate 8khz-48khz)
<b>Recording format</b>	WAV ADPCM encoding
<b>Storage capacity</b>	1GB/2GB/4GB/8GB
<b>SNR</b>	≥80dB
<b>Transmission Interface</b>	USB2.0 HIGH SPEED
<b>Music playback time</b>	Music player screensaver mode operation up to 7 hours.
<b>Video playback time</b>	Up to 3 hours
<b>Battery</b>	Built-in 3.7 V/230mAh polymer rechargeable battery
<b>Support operating system</b>	Windows ME/2000/XP/VISTA

<b>Operation and storage temperature</b>	-5℃~40℃
<b>Distortion rate</b>	≤0.2%

## 11. Troubleshooting

The player can not power on?  
 Check whether the battery is discharged.  
 After connecting the power adapter, check it again.  
 If still unable to power on after the charge, please contact our customer service.

Headphones can not hear the voice?  
 Make sure volume is not on 0 position and the connection to earphone is valid.

The keys do not work?  
 Please confirm whether the lock keys were locked, please do try after open the lock button.

Serious noise?  
 Please check whether the headphone plug clean, and dirt can lead to noise.  
 Check whether the music files are damaged. Try to identify by listen to other music. If the file has been damaged, it may lead to serious noise or sound jump.

FM reception poor?  
 Adjust the location of headset and players.  
 Close electrical installations in vicinity.  
 Headphones can be used as antennas.

Can not download files?  
 Make sure the computer and the player are connected properly.  
 Make sure whether the memory space of the storage is full.  
 Make sure whether the USB cable is damaged.

Please note: Design and characters may change for product improvement without prior notice.

**Instructions on environment** Do not dispose of this product in the usual household garbage at the end of its lifecycle; hand it over at a collection point for the recycling of electrical and electronic appliances. The symbol on the product, the instructions for use or the packing will inform about the methods for disposal.  
 The materials are recyclable as mentioned in this marking. By recycling, material recycling or other forms of re-utilization of old appliances, you are making an important contribution to protect our environment.  
 Please inquire at the community administration for the authorized disposal location.



**ALL RIGHTS RESERVED**  
**DENVER ELECTRONICS A/S**



[WWW.DENVER-ELECTRONICS.COM](http://WWW.DENVER-ELECTRONICS.COM)