

Wireless Presentation System User's Manual

(Model Name: WPS-720)

Version: 2.0

Date: Oct. 29, 2007

Table of Contents

<i>1. Overview.....</i>	<i>3</i>
<i>2. Quick Start.....</i>	<i>4</i>
<i>3. Client Utility.....</i>	<i>8</i>
<i>3.1 Starting Program.....</i>	<i>8</i>
<i>3.2 Login.....</i>	<i>9</i>
<i>3.3 Buttons Description.....</i>	<i>9</i>
<i>3.4 Start/Stop Presentation.....</i>	<i>11</i>
<i>3.5 Start/Stop Playing Video.....</i>	<i>11</i>
<i>3.6 Open Admin Web Page.....</i>	<i>12</i>
<i>3.7 Searching Server.....</i>	<i>113</i>
<i>3.8 Repeat.....</i>	<i>14</i>
<i>3.9 Make PnS Token.....</i>	<i>14</i>
<i>3.10 System Information.....</i>	<i>16</i>
<i>3.11 About.....</i>	<i>17</i>
<i>3.12 Exit Program.....</i>	<i>17</i>
<i>4. Web Management.....</i>	<i>17</i>
<i>4.1. Home Page.....</i>	<i>18</i>
<i>4.2. Download Software.....</i>	<i>18</i>
<i>4.3. Conference Control.....</i>	<i>18</i>
<i>4.4. Login Web Admin.....</i>	<i>21</i>
<i>4.5. System Status.....</i>	<i>21</i>
<i>4.6. Network Setup.....</i>	<i>22</i>
<i>4.7. Projection Setup.....</i>	<i>24</i>
<i>4.8. Change Passwords.....</i>	<i>25</i>
<i>4.9. Reset to Default.....</i>	<i>26</i>
<i>4.10. Firmware Upgrade.....</i>	<i>27</i>
<i>4.11. Reboot System.....</i>	<i>28</i>
<i>4.12. Logout.....</i>	<i>29</i>
<i>5. [Appendix].....</i>	<i>30</i>
<i>5.1 Wall Mount Instructions (Optional).....</i>	<i>30</i>

1. Overview

Wireless Presentation System is an easy installation, convenient operation and user friendly projecting device. It turns your current Projector into a high-end Projector. With the Wireless Presentation System your Projector become a wireless device and PC/Notebooks will be easier to project screen to Projector.

■ Plug & Play

Wireless Presentation System is a plug-and-play device which is easy to install and connect with. Any Notebooks/PCs with built-in Centrino or Wi-Fi card can easily download the wireless projection software and connect to Wireless Presentation System.

■ Flexibility

Wireless Presentation System is compatible to all kinds of projectors, using wire-line or wireless connection, to display presentations. Instantly project your screen to the projector with just one mouse click. Nor more cable swapping hassles.

■ Performance

Wireless Presentation System has the ability to deliver real time animation screens for up to 1280x768 resolutions in 24-bit color depth. It also provides friendly web-based administrating UI for easy configuration and wireless security setups.

■ Security

Support Login code to protect other users from accessing presentation contents. During presentation, screen images can also be protected by WEP 64/128 encryption.

■ Conference control

Supporting multi-users to switch presentation, any member at the conference can easily login to presentation server and switch the computer's screen to Projector without moving the computer to Projector.

- **Intelligent searching function**

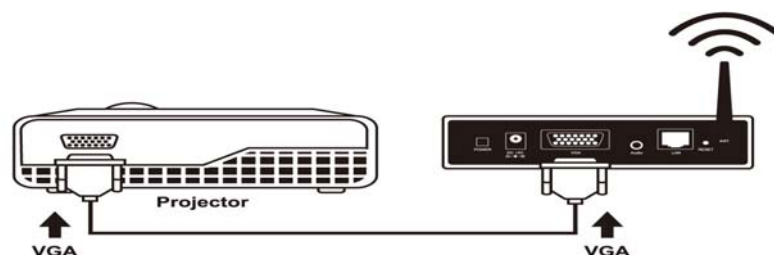
After perform Wireless Presentation System utility, the utility will automatically search all the Wireless Presentation System which are available and within the wireless LAN cover range. Users don't need to do any other setting, without worrying about the operation procedures.

➤ **Features**

- Wireless presentation, no more cable swapping.
- Video projection, projecting your video file on the screen through WLAN/LAN.
- Compatible to all projectors with standard VGA connectors.
- One-Click to switch presenters' displays.
- Real time display for PowerPoint presentations, images and applications.
- Supports output resolutions up to 1280x768 with 24-bit color.
- No installation CD required, software is directly downloaded from the device.
- Provide session security login and wireless WEP key to protect presentation contents.
- Conference control function is provided for the host to moderate a meeting.
- Provide friendly web-based user interface for easy configuration.
- Support static-IP and DHCP server.

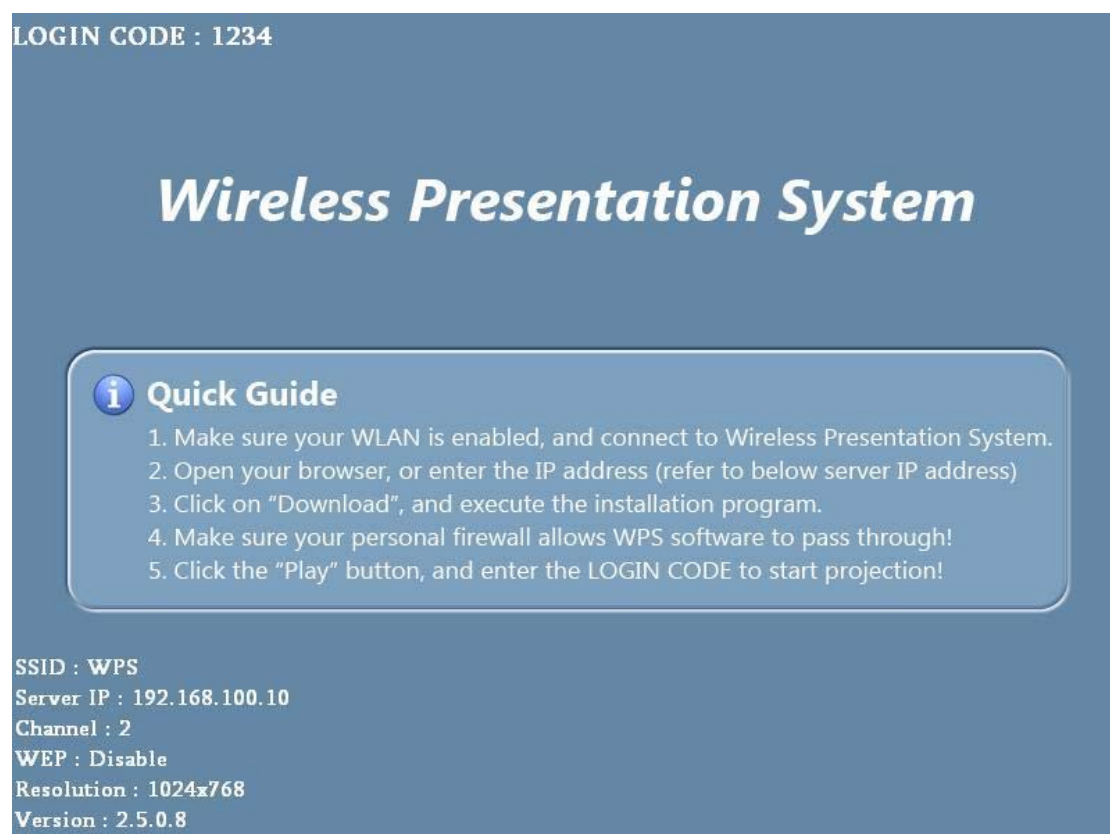
2.Quick Start

- 1) Connect projector VGA cable to WPS box VGA connector and turn on projector power.



2) Turn on WPS box.

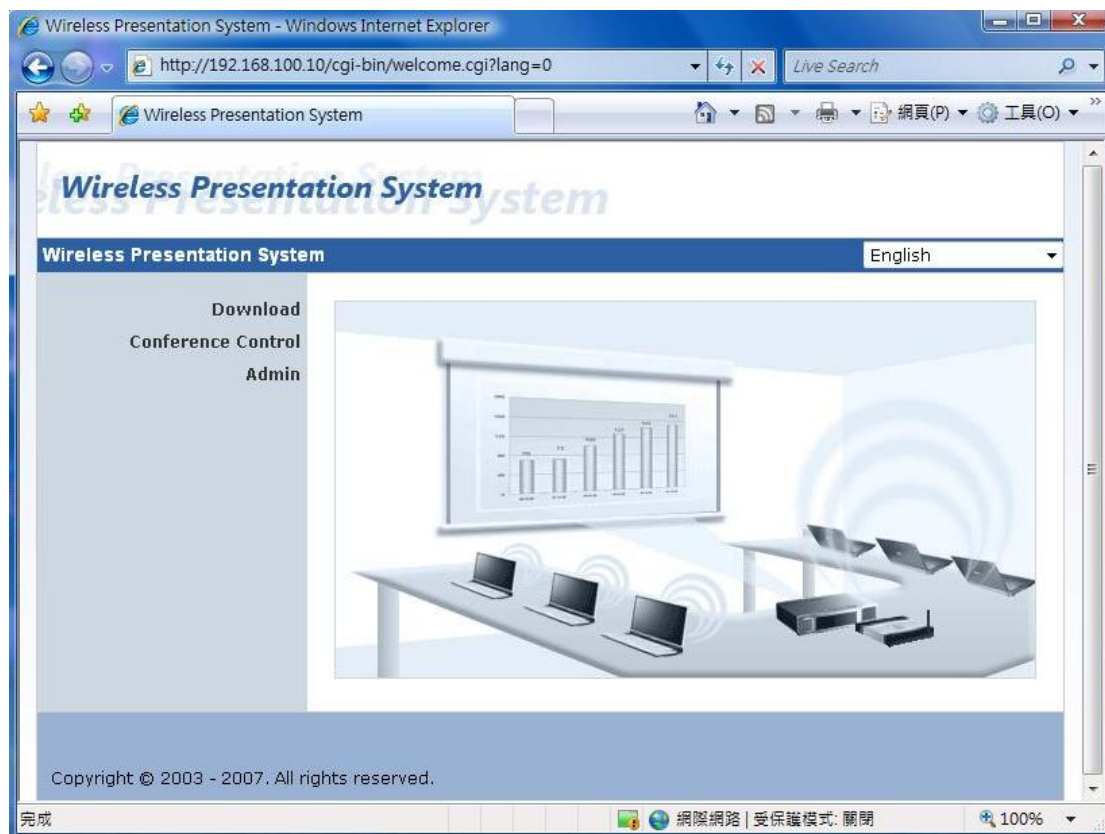
- ◆ When Projector shows the default menu on the screen as below, it indicates the WPS box is ready now.



3) Make sure your PC WLAN is enabled already, and connect your PC with WPS box.

4) Open your browser and it will redirect to WPS main page automatically, or you can enter the IP address to access the WPS web home page.

- ◆ The default IP address of WPS is **192.168.100.10** or refers to the IP address shown on the left corner of projector screen.



- 5) Click on “**Download Software**”, and execute the installation program.
- ◆ After installing the program, you will see WPS shortcut on your PC desktop.





6) Make sure your personal firewall allows WPS software to pass through.

7) Enter the **LOGIN CODE** and

- ◆ You can see the login code on the projector screen



8) Click the "Play" button to start projection!



3. Client Utility

3.1 Starting Program

After you download WPS Windows program via web page successfully, then follow below steps to start.

- 1) Click WPS icon to execute the program.



- 2) Program start to search for WPS box automatically,
- 3) If WPS box founded then "**Login Code**" dialog box will be pop up on the PC screen.
- 4) If not, will enter to disconnected state and "**Reconnect**" button shown for you to try again.

- **Searching for WPS box**



- **WPS box is founded and enter login code to start.**



- Failed to find WPS box



3.2 Login

- 1) After "Login Code" dialog box shown, enter login code to start presentation.
- 2) You can see the login code shown on the projector screen.



3.3 Buttons Description

- 1) After login successfully, you will see main UI of WPS application.



2) Click following buttons to manipulate WPS Application.



Presentation Mode



Video Mode



Start projecting



Pause projecting



Stop projecting



Refresh projecting screen



Server Login Code



While projecting in progress, this icon is blinking



Start Playing Video



Stop Playing Video



Pause Playing video



Open Video File



Audio volume ON.



Audio volume OFF



Audio volume strength bar



Video time bar



While playing video, it will be blinking



Function menu




Minimize the program




Exit the program

3.4 Start/Stop Presentation


Click  to start presentation.

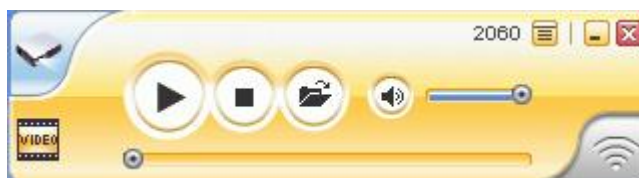
Click  to stop presentation.

Click  to pause presentation, that will hide any activities of your PC screen. Once you click "Play" button again, screen projection will be resumed.

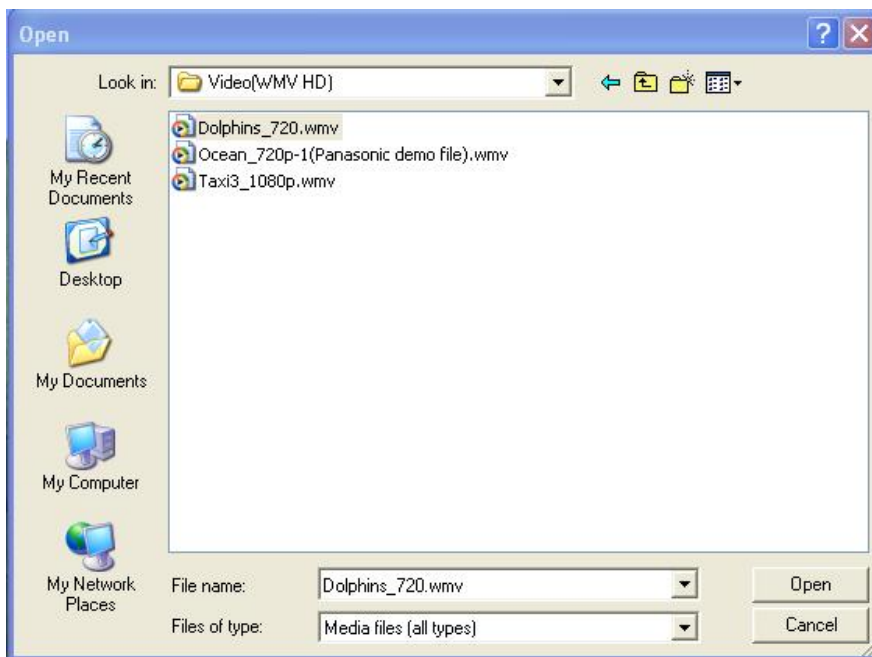


3.5 Start/Stop Playing Video

Click  to switch to Video Mode.




Click  to open the video file and submit to play it.

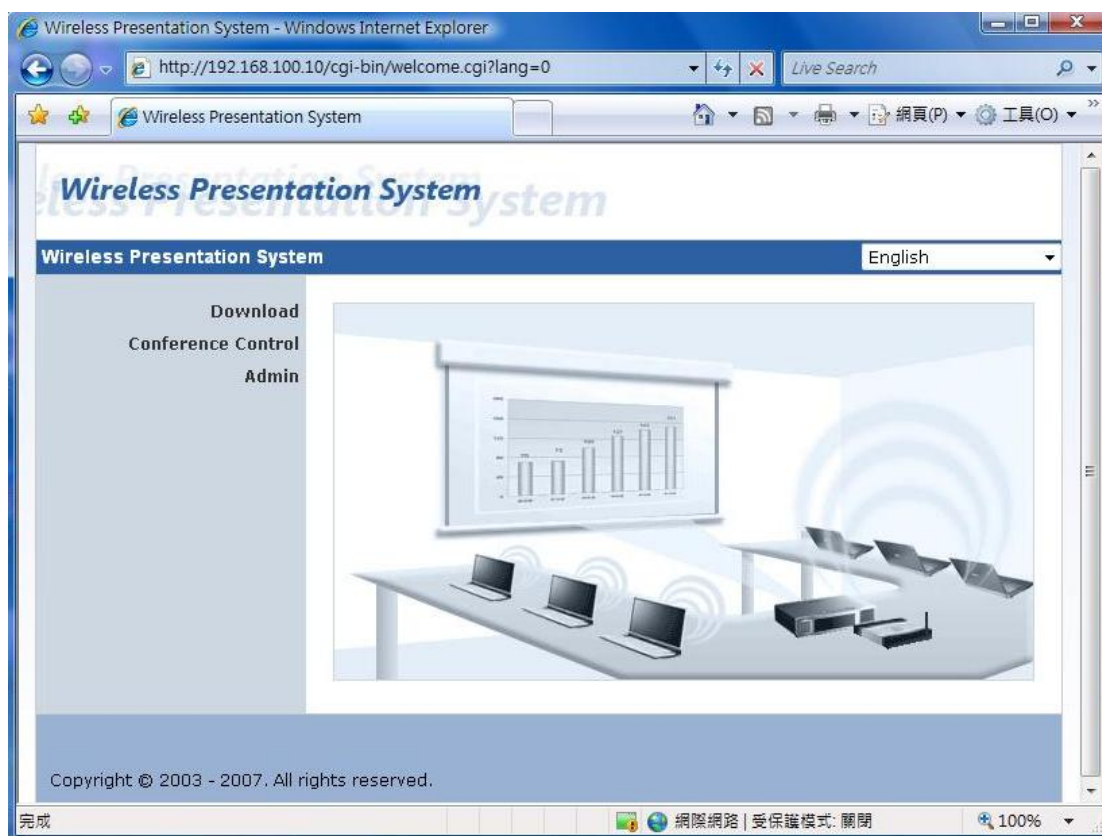


* Supported Video Format: MPG, MPEG, DAT, VOB, WMV9, ASF.

3.6 Open Admin Web Page

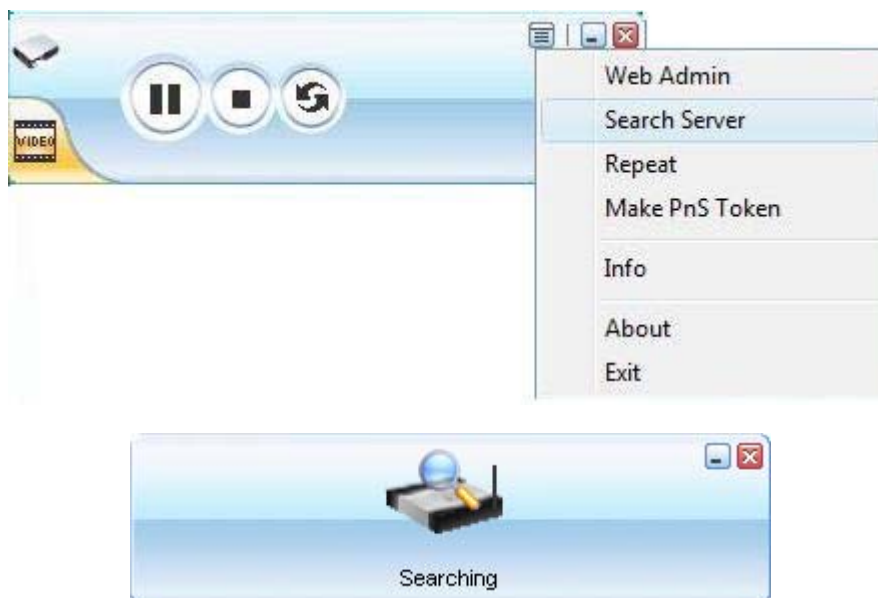
Click  to open function menu and select "Web Admin" management web page. The web page detailed functions will be described on next chapter.





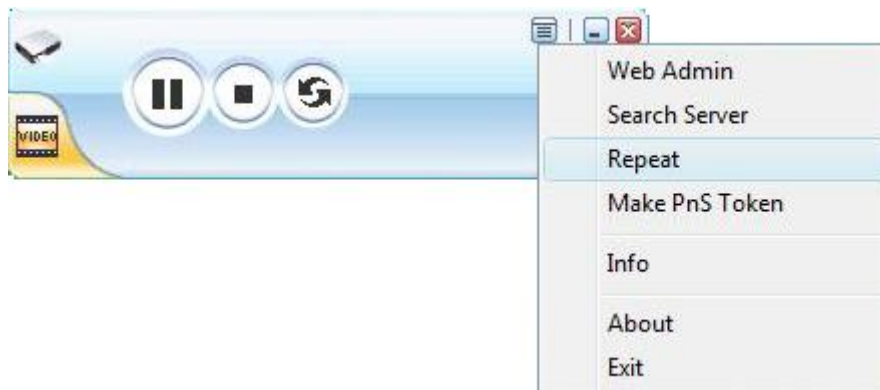
3.7 Searching Server

Click "Search Server" to search for WPS box again.



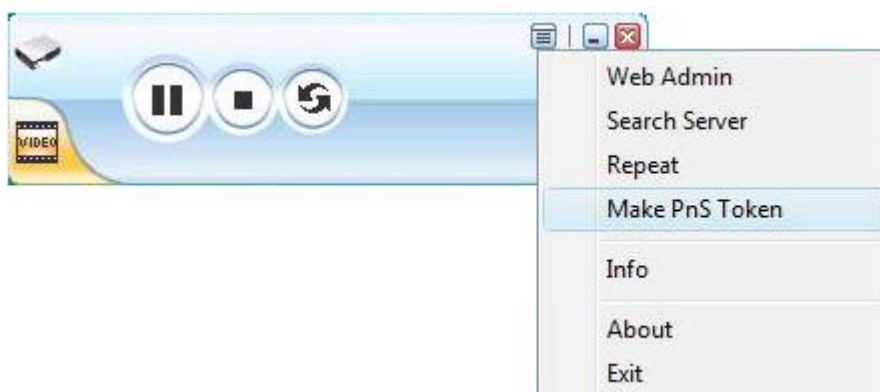
3.8 Repeat

Click "Repeat" to enable/disable video repeat capability.



3.9 Make PnS Token

Click "Make PnS Token" to make a USB PnS Token.



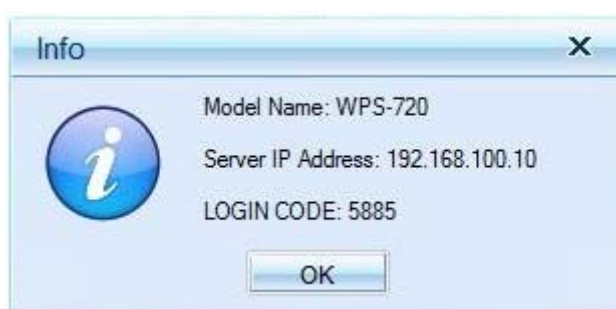
USB Auto Setup Wizard:





3.10 System Information


Click "Info" to show system information. It includes product model name, IP address and other information.



3.11 About



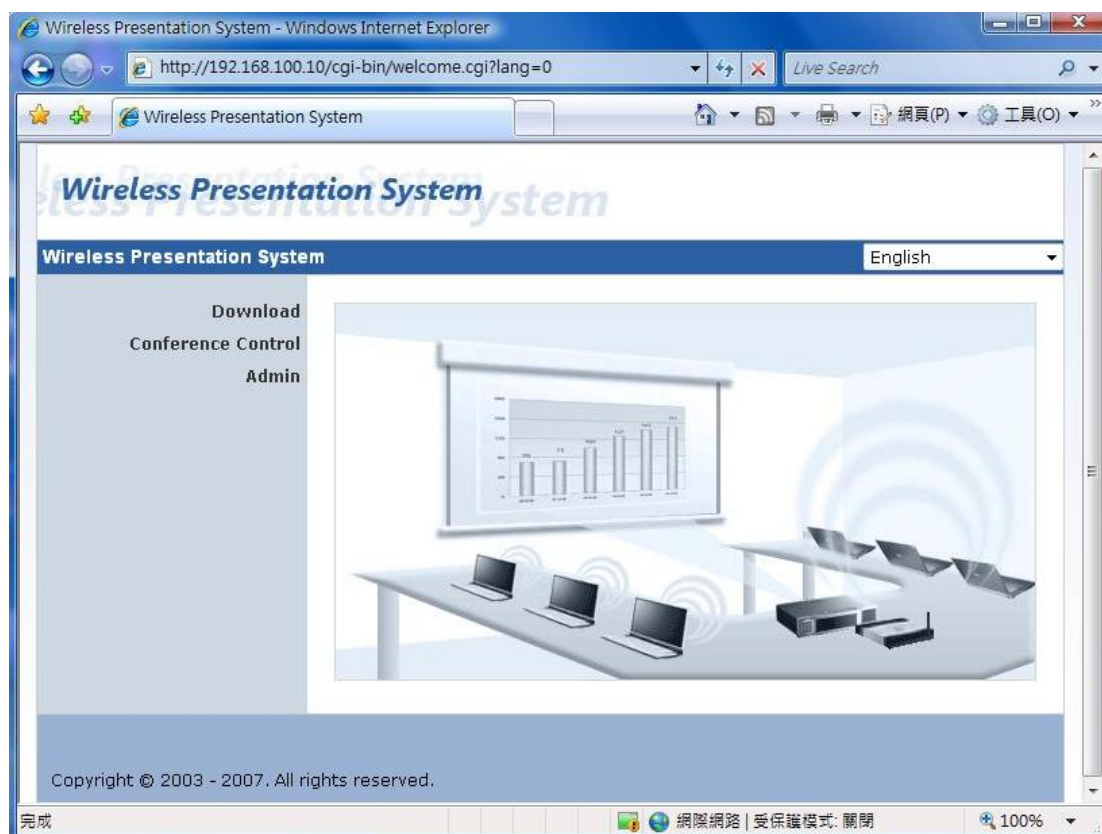
3.12 Exit Program

Click  to exit this program.

4. Web Management

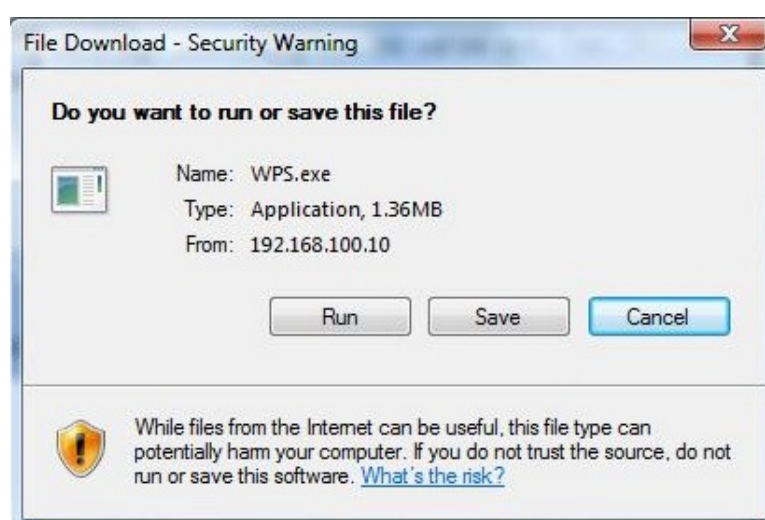
4.1. Home Page

1. Make sure your PC connect to WPS box successfully.
2. Open your browser, it will enter WPS home page automatically.
3. If not, enter your IP address on the browser, you can see the IP on the projector screen.
4. The default IP is 192.168.100.10






4.2. Download Software

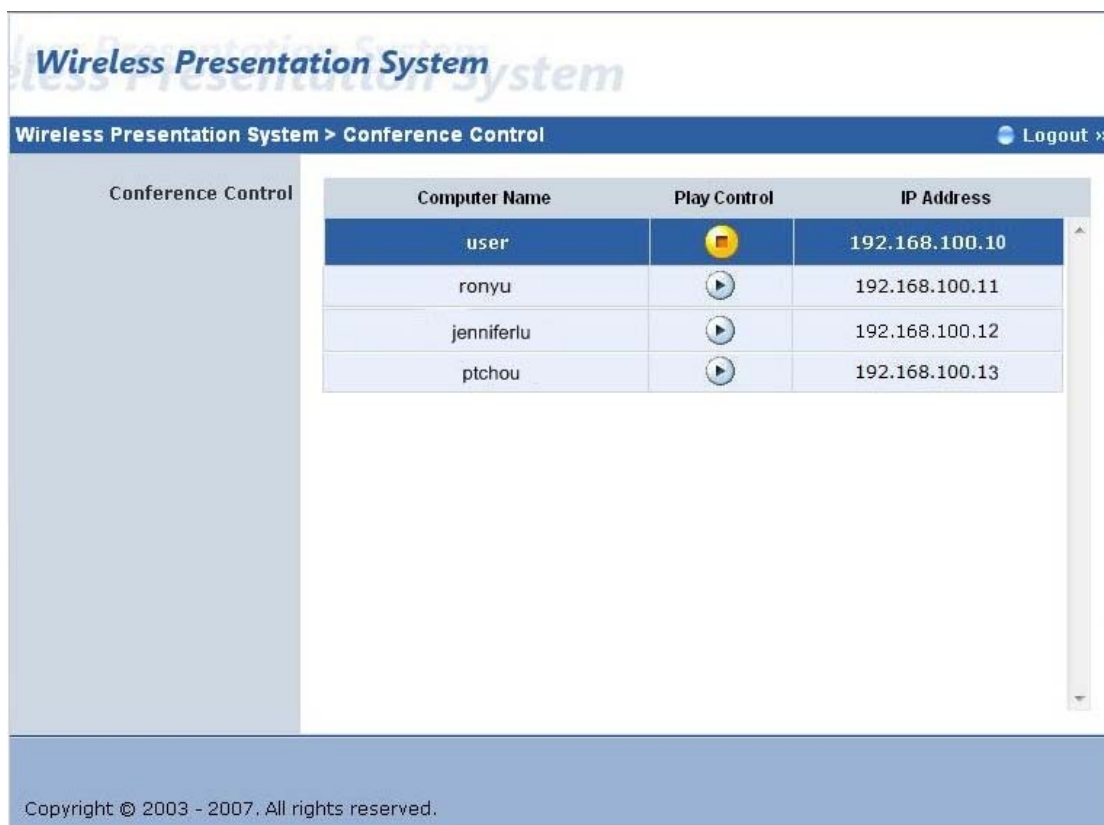
1. Select "Download software" function.
2. Press "**Login**" button to download Utility, the default password is blank
3. You can save file first then execute later or execute this utility directly.
4. Follow Installation Wizard instructions to proceed till the installation process complete.
5. If pop up "**Windows Security Alert**" because Windows firewall block this program. You just press "**Unblock**" button to continue installation.
6. Once installation complete, a utility shortcut come out on the screen.



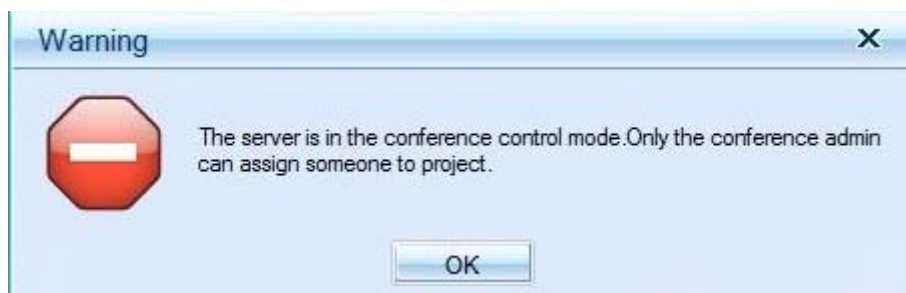
4.3. Conference Control

1. This function allows you to host a meeting smoothly without projector cable swapping and each participant can show their presentation easily.
2. Select "**Conference Control**" function.
3. Enter password, the default value is "trainer", and then press [Login].
4. After login, you can see a User List on the screen which indicates all of users connected to WPS box.
5. There are three columns, "**Computer Name**", "**Play Control**" and "**IP Address**".
6. You can press "**Play Control**" button  to control who is next presenter by  "**Play**" button and  "**Stop**" button.
7. User List
 - **Computer Name**: The name of PC connected to WPS box.
 - **Play control** : Show current user's projecting status.

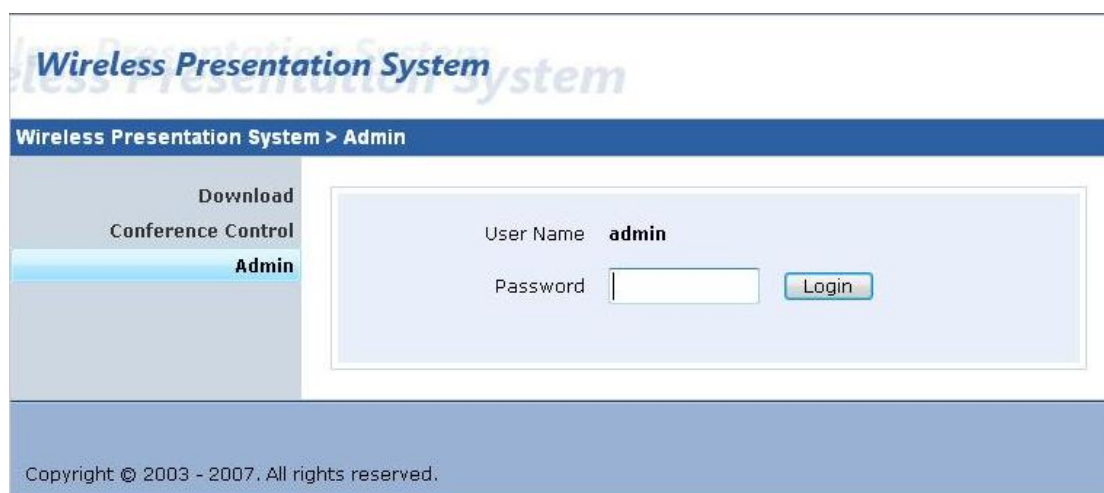
- ▶ : Start projecting
- ◻ : Stop projecting.
- **IP address** : The IP address of PC



In the conference session, only the conference admin can assign someone to project. If anyone tries to project, the following warning message will popup.



4.4. Login Web Admin



1. Click [**Admin**] and then enter password to login web page.
2. The password default value is "admin".

4.5. System Status

Wireless Presentation System > Admin > System Status Logout »

System Status	Model Name	WPS720
Network Setup	Versions	
Projection Setup	Firmware Version	2.5.0.8
Change Passwords	Network Status	
Reset to Default	IP Address	192.168.100.10
Firmware Upgrade	Subnet Mask	255.255.255.0
Reboot System	Default Gateway	192.168.100.10
	Wireless MAC Address	00:C0:A8:C3:13:DC
	Wire MAC Address	00:12:5F:00:39:08
	Connection Status	
	Projecting Status	Projecting
	Total Users	1

Copyright © 2003 - 2007. All rights reserved.

*** Click [**System Status**], shows current system status.

Model Name: Product model name

Versions:

1. **Firmware version no.:** Product firmware version number.
2. **Software version no.:** Windows client utility version number.

Network Status:

1. **IP address :** IP address of WPS device.
2. **Subnet Mask :** subnet mask
3. **Default Gateway :** default gateway
4. **Wireless MAC address :** wireless MAC address
5. **Wire MAC address :** wire MAC address

Connection Status:

1. **Projecting status:** which is "Waiting for projecting" or "Projecting"
2. **Total Users:** It shows how many users login into WPS box.

4.6. Network Setup

There are many kinds of operating configurations as below.

Wireless Presentation System > Admin > Network Setup Logout »

System Status Network Setup Projection Setup Change Passwords Reset to Default Firmware Upgrade Reboot System	IP Setup	<input checked="" type="radio"/> Obtain an IP address automatically <input type="radio"/> Use the following IP address:
	IP Address	192 . 168 . 100 . 10
	Subnet Mask	255 . 255 . 255 . 0
	Default Gateway	192 . 168 . 100 . 10
	DHCP Server Setup	<input checked="" type="radio"/> Auto <input type="radio"/> Disable
	Start IP	192 . 168 . 100 . 11
	End IP	192 . 168 . 100 . 254
	Wireless Setup	Wireless LAN <input checked="" type="radio"/> Enable <input type="radio"/> Disable
	Region	---- WORLDWIDE ----
	SSID	WPS
	SSID Broadcast	<input checked="" type="radio"/> Enable <input type="radio"/> Disable
	Channel	Auto
	WEP	Disable
	Key	
	GateKeeper	<input type="radio"/> All Pass <input checked="" type="radio"/> All Block <input type="radio"/> Internet Only(port 80 & 443)
		Apply Cancel

Copyright © 2003 - 2007. All rights reserved.

< Auto-Configuration Network Setup >

The default setting of the WPS box is DHCP client. When the WPS box is connected to a LAN that already has a DHCP server present, the WPS box takes an IP address assigned to it by the server. When the WPS box is connected to a LAN that does not have a DHCP server, the WPS box becomes the DHCP server in the network.

< IP Setup >

- ◆ You can select "obtain IP address automatically" or "Use the following IP address"
- ◆ IP Address: The default value is 192.168.100.10.
- ◆ Subnet Mask: The default value is 255.255.255.0
- ◆ Default Gateway: The default value is 192.168.100.10

< DHCP Server Setup >

- ◆ You can select "auto(Enable/Disable DHCP Server" or "Disable"
- ◆ Start IP: The start IP address of DHCP Server.
- ◆ End IP: The end IP address of DHCP Server.

< Wireless Setup >

- ◆ Wireless LAN: you can select "Enable" or "Disable"

- ◆ Region: default value is "Worldwide".
- ◆ SSID: SSID string, max. Length is 32 bytes.
- ◆ SSID Broadcast: you can select "Enable" or "Disable"
- ◆ Channel: to set fixed channel or Auto. The "Auto" means after power on WPS, it will scan all of wireless channel and select clear one channel automatically.
- ◆ WEP: you can Disable WEP key or select one of 64bit or 128bit in ASCII or HEX string.
- ◆ Key: If WEP is enabled, you have to set key value according to WEP mode you selected.

< Gatekeeper >

Gatekeeper is designed for ensuring the enterprise network security within WPS box

- ◆ "All Block" can block Guest Users(through wireless) to access all office network(LAN),
- ◆ "All Allow" can pass Guest Users(through wireless) to access all office network
- ◆ "Internet Only" can block Guest Users (through wireless) from office network (LAN) but still reserve internet connection capability.

<Apply >: press button to select this mode

<Cancel>: press button to abort action.

<Back>: Back to Operating mode main menu

4.7. Projection Setup

The screenshot displays the 'Projection Setup' configuration page within the 'Wireless Presentation System' admin interface. The page title is 'Wireless Presentation System > Admin > Projection Setup'. A 'Logout' link is visible in the top right corner. The left sidebar contains a menu with the following items: System Status, Network Setup, Projection Setup (highlighted), Change Passwords, Reset to Default, Firmware Upgrade, and Reboot System. The main content area is titled 'Projection Setup' and contains the following settings:

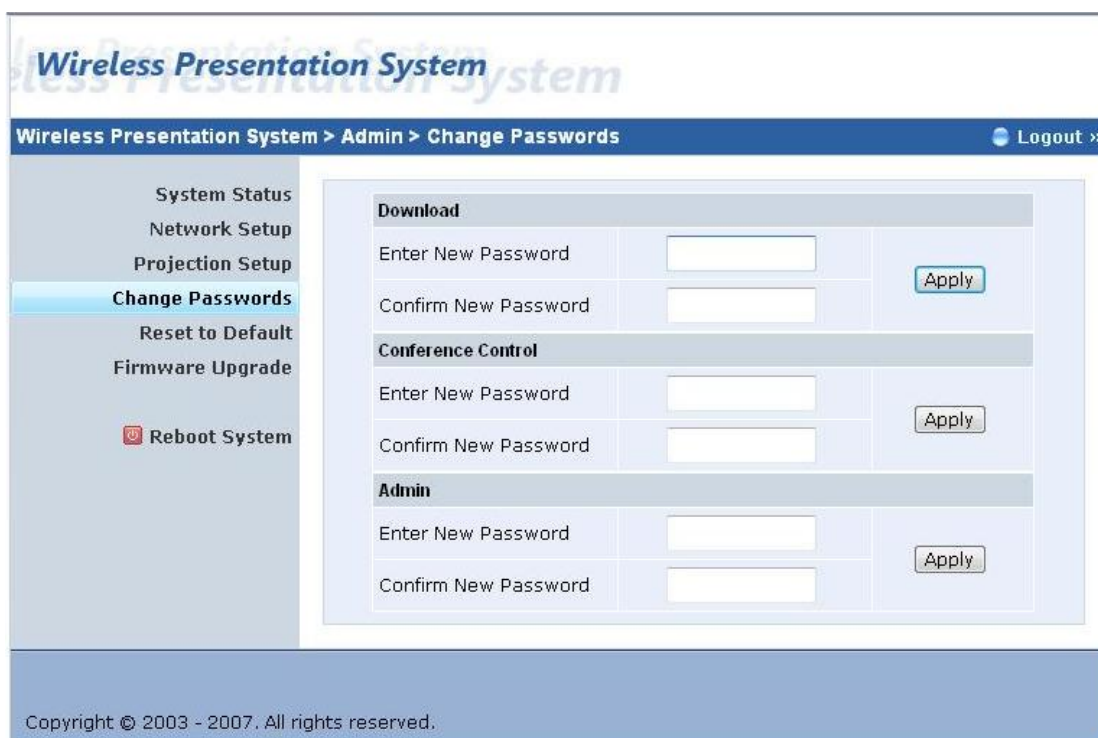
Resolution	XGA (1024x768)
Color Depth	Normal (16 bit)
Screen Refresh Rate	60 Hz
Login Code	<input type="radio"/> Disable <input checked="" type="radio"/> Random <input type="radio"/> Use the following code <input type="text"/>

At the bottom right of the settings area, there are 'Apply' and 'Cancel' buttons. The footer of the page reads 'Copyright © 2003 - 2007. All rights reserved.'

*** Click [Projection Setup] button

- ◆ **<Resolution>**: 1024*768, 1280x768 and 800*600.
- ◆ **<Color Depth>**: provide WPS output with 16bit or 32 bit color depth. It depends on your PC settings.
- ◆ **<Screen Refresh Rate>**: This is VGA output refresh rate, provides 60 Hz and 75Hz to suit for different kinds of projectors.
- ◆ **<Login Code>**: You can select "Disable", "Random", or "Use the following code" to set a specified 4-characters Number.
- ◆ **<Apply>** : Confirmation and Save modifications
- ◆ **<Cancel>**: Cancel all the modifications

4.8. Change Passwords



Wireless Presentation System

Wireless Presentation System > Admin > Change Passwords Logout »

System Status
Network Setup
Projection Setup
Change Passwords
Reset to Default
Firmware Upgrade
Reboot System

Download

Enter New Password

Confirm New Password

Conference Control

Enter New Password

Confirm New Password

Admin

Enter New Password

Confirm New Password

Copyright © 2003 - 2007. All rights reserved.

*** Click **[Change Password]** button, to change password value.

- ◆ **<Enter New Password>**: enter new password you want to change for each category.
- ◆ **<Confirm New Password>**: double confirm new password.
- ◆ **<Apply>**: Confirmation and Save modifications.

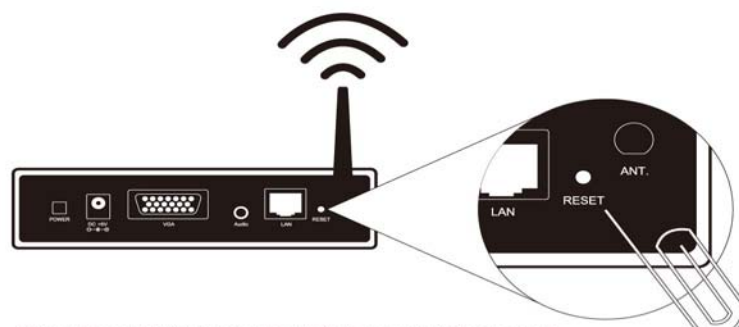
4.9. Reset to Default



*** Click [**Reset to Default**] button to restore factory default settings.
<**Apply**>: Confirmation and action.

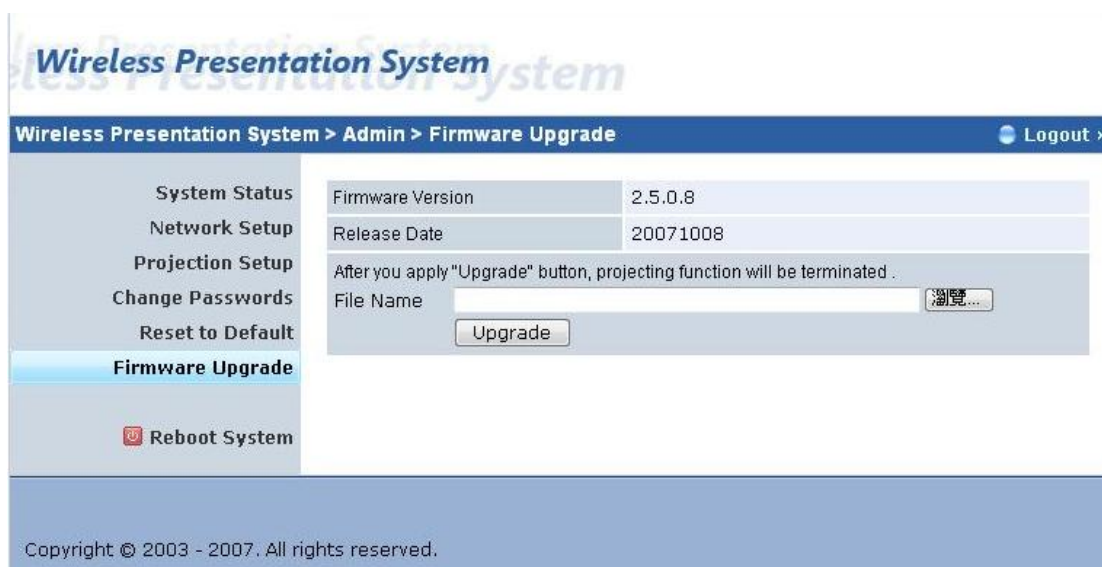
*** **Another way to restore Factory Default Settings, Follow below procedures.**

1. Power off WPS.
2. On the rear panel, press [**Reset**] button and **Hold**.
3. Turn on WPS box.
4. Wait for over 10 seconds and relief [**Reset**] button.
5. It will take effect to restore factory default settings.



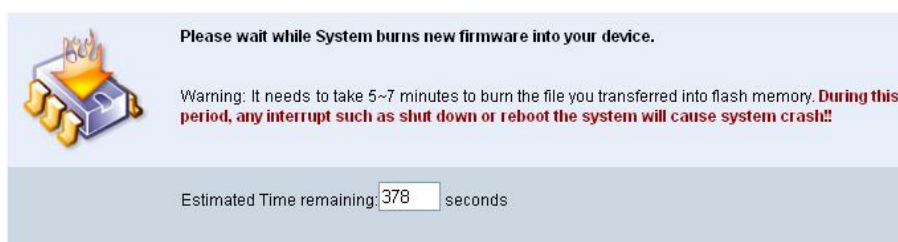
Press reset button and hold it for over 10 seconds.

4.10. Firmware Upgrade



*** Click [**Firmware Upgrade**] button to upgrade firmware.

1. Firstly, you have to get latest firmware image file from your vendor.
2. Click <**Browse**> to specify file name you want to upgrade.
3. Click <**Upgrade**> to start.
4. A warning message shown and count down counter on the screen.
5. After a few minutes, a complete message shown on the screen.
6. Restart WPS box to take effect.



Warning: Don't power off WPS while firmware upgrade in progress,

otherwise will cause your Box doesn't work and have to return device to your vendor for fixing.

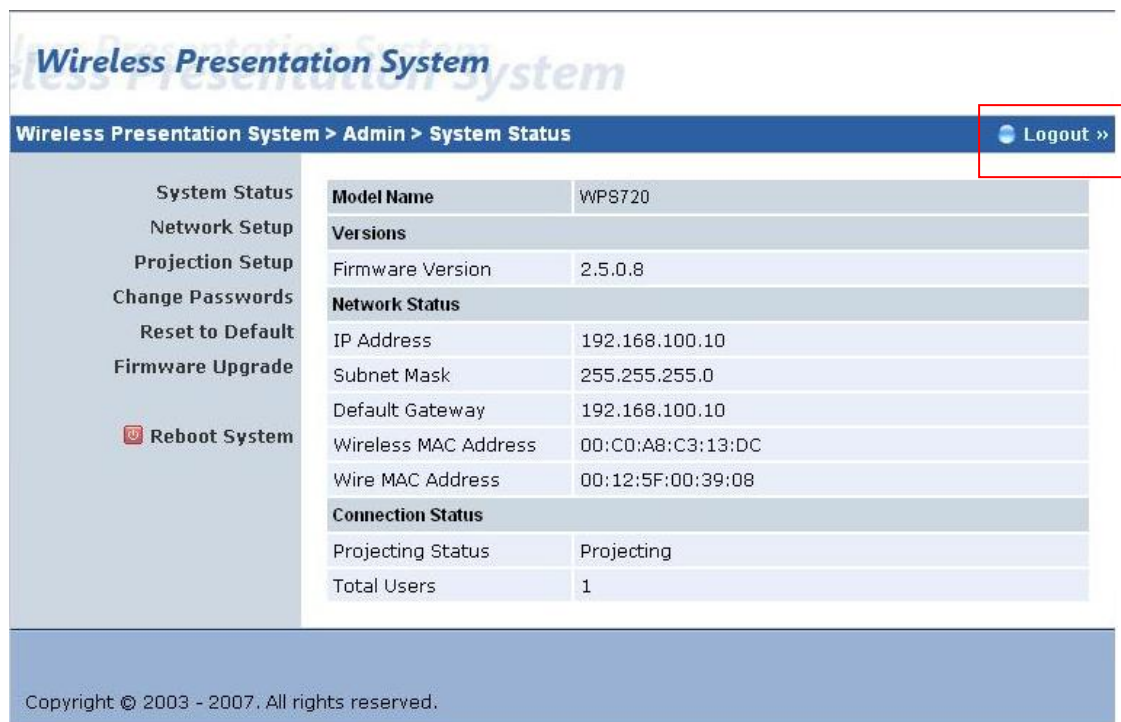
4.11. Reboot System



*** Click **[Reboot System]** button, to restart system

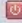
- ◆ **<Reboot>**: reboot system automatically.

4.12. Logout



The screenshot shows the 'Wireless Presentation System' Admin interface. The breadcrumb trail is 'Wireless Presentation System > Admin > System Status'. A 'Logout' button with a blue globe icon and '»' is highlighted with a red box. The main content area is divided into a left sidebar and a right table.

System Status

- System Status
- Network Setup
- Projection Setup
- Change Passwords
- Reset to Default
- Firmware Upgrade
-  Reboot System

Model Name	WPS720
Versions	
Firmware Version	2.5.0.8
Network Status	
IP Address	192.168.100.10
Subnet Mask	255.255.255.0
Default Gateway	192.168.100.10
Wireless MAC Address	00:C0:A8:C3:13:DC
Wire MAC Address	00:12:5F:00:39:08
Connection Status	
Projecting Status	Projecting
Total Users	1

Copyright © 2003 - 2007. All rights reserved.

*** Click **[Logout]** button, to back Web home page.

5. [Appendix]

5.1 Wall Mount Instructions (Optional)

