

# WIRELESS GPS+GSM CAR ALARM

(MODEL: F-900C)

# USER MANUAL



## Functions and Features

- 1 . Anti-burglar, anti-robbery;
- 2 . An real-time inquiry about the position of your car is made through SMS of mobile phone.
- 3 . An independent inquiry about the detailed position of your car can be made.
- 4 . No monitor terminal and platform are required and it is free of service charge.
- 5 . Automatic SMS and alarm type can be provided when your car alarms.
- 6 . Car can be inspected and oil/power unlocking controlled through SMS.
- 7 . Adopting wireless data communication technology, with faster alarming response and more stable performance than wire GSM car alarm;
- 8 . Remote calling;
- 9 . Disable vehicle through remote circuit/fuel line lock;
10. Good concealment, being installed any hidden place of vehicle and achieving the wireless connection between main unit and the existing car alarm, working even if the existing car alarm removed.
11. Gas supply cut /breaker connecting the main unit wirelessly so that the vehicle can not be started once the circuit/ fuel line is locked, even the main unit of alarm is dismantled
12. With hidden emergency alarm switch and gas supply/power cut switch;
13. Wire-cutting Prevention: It will call, send a short message to and give a voice prompt to the car owner about power failure. Anti-dead and anti-leakage-of-alarm design;
14. Remote monitoring
15. Password protection;
16. Arm/disarm by telephone;
17. Car position location by GSM network;
18. Small capacity, easy to install and use, cost-effective.

## Product Components

One main unit, One gas supply cut/relay (one for back up), hidden emergency button, one set of alarming sensor, one siren, one set of monitor, one set of power line for main unit, one set of GSM antenna, one set of GPS receiving heads

## Operation

### 1. Main unit connection

Install the main unit according to the Installation Diagram.

### 2. Install SIM Card

First, you have to purchase one GSM mobile phone card (SIM card), then screw out the four bolts at the back of the main unit, open the face covering of main unit, put the SIM card in the SIM card slot, turn on the power supply (at "ON" position), and system will start to work within 5 -25 minutes. Finally put back four bolts into the main unit.

Note: this unit shall not support CDMA card.

### 3. Set up/ modify password, forget password

#### 1) Set up and modify password

Password is used to identify and protect the authorized users. Users are suggested to change the password after finishing system installation so as to prevent illegal unauthorized operations. Users should operate under the following steps:

First, call the system telephone number by using any regular telephone or mobile, input 6-digit passwords (123456) provided by the factory, then, enter the "System set up" menu, follow the voice guide to enter "Modify password" menu to do the setup.

#### 2) Forgetting password

User should remember the password. Should he/she forget the password, please follow the following steps:

3). Intentionally produce alarming;

4). Upon receiving the alarming, carry out the Modifying password function to reset password according to the voice guide.

5). After connecting system telephone, unplug the connector of the main unit, and press "#" to enter main operation menu automatically, then password could be reset again.

### 4, Set Up Normal Alarm Telephone Numbers:

1) The alarming telephone numbers are the numbers that the system automatically dials in alarm situation. Alarming numbers are classified into two groups: 3 ordinary alarming numbers and 3 emergency help alarming numbers. When the car alarms, main unit will automatically call the ordinary alarming number.

2) Use regular mobile phone to call the system telephone number, and then enter the alarming telephone number set up menu, set up your alarming number.

Call the system alarm number → Enter "main menu operation" → Enter "system set up" → Set up ordinary alarming number, if setting up 3 groups alarming number, operate it under the voice guide. If needing to set up one group alarming number only, simply input "#" for another two groups, and system will audio indicate "Modifying Successful".

### 5, Set up Emergency help alarming number

In case of emergency which related to personnel safety, car owner can lightly press emergency switch, and it will automatically call preset emergency alarming number,

so it is suggested to set up the emergency number to be your family's or good friends'.

Call the system alarm number      Enter "main menu operation"      Enter  
 → "system set up"      Set up emergency alarming number, if setting up 3  
 groups alarming number, operate it under the voice guide. If needing to set up one  
 group alarming number only, simply input "#" for another two groups, and system  
 will audio indicate "Modifying Successful".

## 6, Revision of SMs Telephone Number

The user can inquire about the car situation through its SMS or it will send a short message to the user when the car alarms. The user can input three groups of SM telephone numbers. Each group of number must have the country code before. For example: China's code: 0086. You should input 0086 \* 139XXXXXXXXX when you enter the SM telephone number.

For operation, same as above.

## 7. Trigging Alarm

### 1) Test Mode

Press the key of car finder on the remote, the car siren would beep for three minutes, and the system will automatically call the ordinary alarming number.

### 2) Alarm Call from the Mainframe

If the car door is opened or it gives an alarm call due to vibration, it will automatically dial the common telephone number and prompt "Car Alarm". It can also reply to the user through SMS to report the information on car vibration and car door's being opened, the current seat of car, code of base station, driving speed and direction (show the longitude, latitude, code of base station, driving speed and direction).

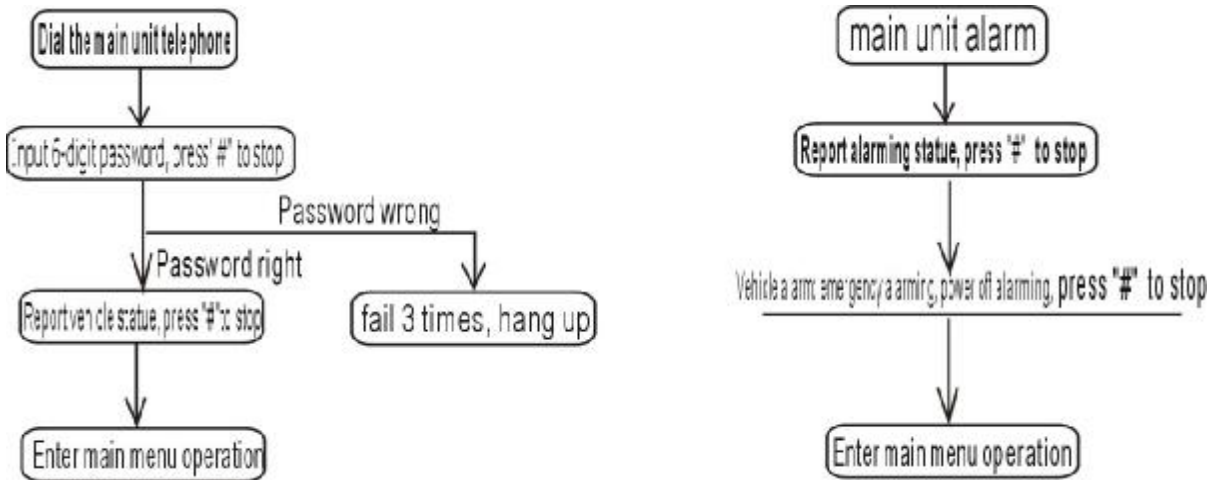
### 3) System alarm for power cut & wire-cut

On Arm statue, once the power line is cut or the vehicle system is power off, the main unit will call the alarm telephone with the voice warning "alarming telephone alarm" the current seat of car, code of base station, driving speed and direction (show the longitude, latitude, code of base station, driving speed and direction).

### 4) Emergency help alarm

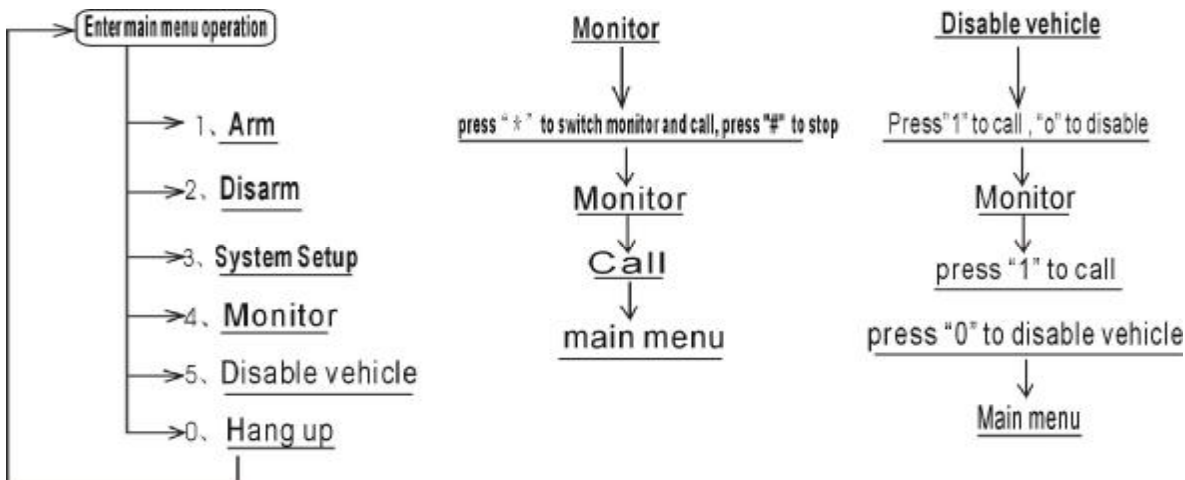
Press the red key on the emergency switch for 2 minutes, and the system will call the emergency help alarm with voice warning "emergency telephone alarm". For operation, same as above.

## 8. Telephone operation menu

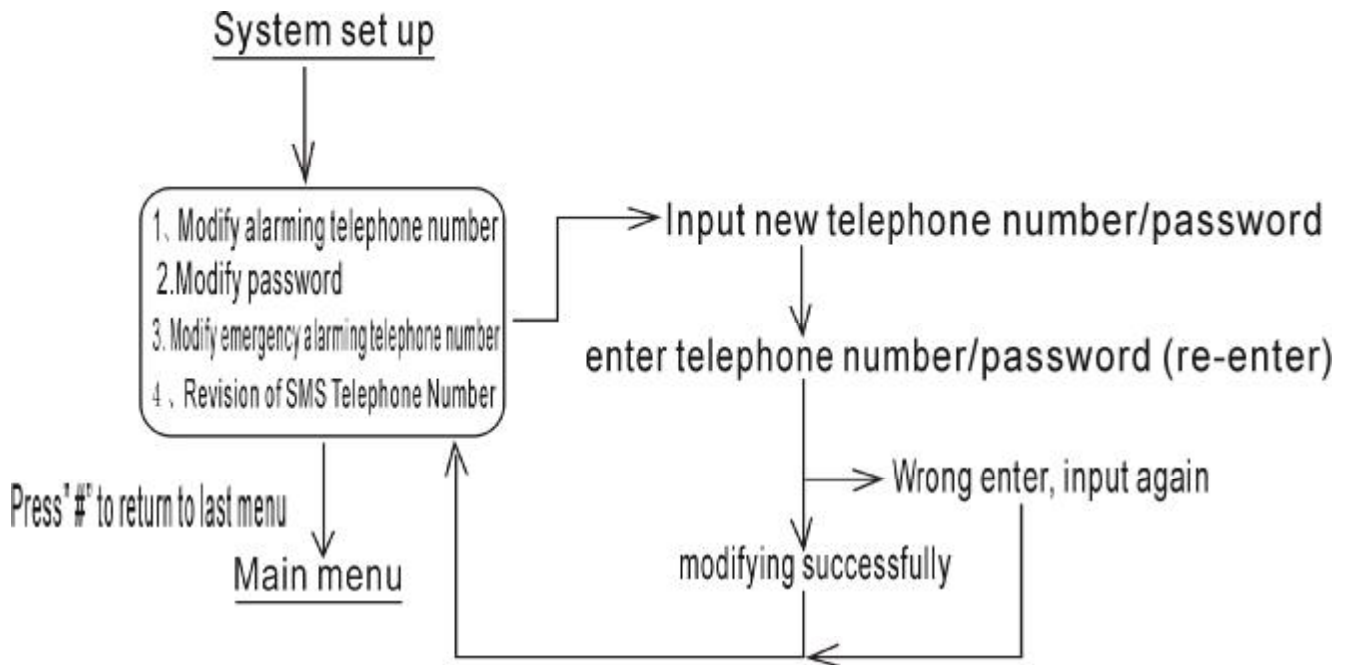


NOTES: User is not supposed to input any password when the call is from the car itself. After finished listening the alarming report, press “#” to enter main menu operation, and operate under the voice guide.

9. Main Menu Operation



10. System set up



**Format of SMS Number: country coed + telephone number**

0086 For example: China's code: 0086

**Telephone number: 1381933XXXX**

**0086\*1381933xxxx# Input: 0086\*1381933XXXX#**

Deletion of SMS Telephone Number:

After the inputted telephone number is prompted, input "#". It will voice-prompt success of revision.

## Installation

1. This system is easy to install, and the main unit is only needed to connect the power supply. Pay attention to the positive-negative bipolar of power line in which red is positive and black is negative (minus earth). Make sure the main unit is put on the hidden place of vehicle, and fix the siren and monitor firmly.
2. Try to put the gas supply cut/ power cut relay on the driving cab in case the high heat of engine affect its performance.
3. Wireless sensor and siren line of existing car alarm shall be butt jointed through red line to red line, black line to black line, and try to be way from high heat of engine.
4. Emergency panic switch shall cling to hidden place and easy to reach.

## Maintenance

1. Please often check if the SIM card has the enough money, otherwise the main unit can not alarm if in short of money in it.
2. The battery of emergency panic switch should be inspected periodically and replaced when necessary to make sure enough electricity, otherwise the emergency panic switch can not alarm.
3. Fix the antenna of main unit firmly and put it on the area with good capability of receiving signal, otherwise, no signal or poor contact of antenna will make the system unable to alarm.
4. Keep the password secret. If other people knows it, please modify it immediately in case others enter the system illegally.
5. It is dangerous to use remote power/gas supply cut function. The user is suggested to enter the call state and threaten driver to stop, give sometime for driver to stop the vehicle, and know about the car status through monitor function and make sure there is no danger, then use "Disable vehicle" function.
6. In arm mode, the car key can not open the door, the ignition key can not start the engine, the system will sound alarm. If arm by mobile or phone, user must disarm it by mobile or phone. We suggest that user arm the system by remoter in normal condition. If lost remoter, you can arm the system by phone to avoid other person use the lost remoter.
7. If the main unit can not work normally, user can screw out the screw on bottomed hull of main unit, turn the power switch to "OFF" position, and check SIM card if in good contact, then turn the power switch to "ON" position to start the power supply.

## Notice for Usage

1. Fix the GPS joint and make sure its bottom and surface for fear of influence on satellite signal.
2. Never use easily guessed password, such as 123456, 88888, etc.
3. When parking your car in a strange place, please check the alarm system or your mobile phone to ensure that the parking lot is covered by GSM signal. Change the parking lot otherwise.
4. GSM communication sometimes may be in a single-way or no communication state. When receiving the signal from the car, user can figure out that there is alarm condition even if he/she can't hear the sound.
5. User should make sure that he/she does not fail to pay the telephone fee, lest the GSM communication service could be stopped, thus causing the alarming system to loose its functions.

6. Don't tell the system telephone number or password to anyone else.
7. Please make sure the 12V power is well-connected first, and then switch on the mainframe, otherwise it will call outside because it admits the power is off.
8. Insert the SIM card in the mobile first and then fix it in the alarm after whether the SMS is normal is tested.
9. Where no entry into the system happens, please solve it after turning off electricity and restarting it.

## Malfunctions and diagnoses

Malfunctions	Diagnoses
The system telephone is busy while being called	1、 The system could be calling preset alarm telephone numbers; Switch off the switch besides the main unit, and switch it on 10 seconds later, and try it again;
The system telephone can't be connected, or it is power off	1、 Check that the starting process of the system is correct or not. Could it possible that some connections have not done? Switch off the switch besides the main unit, and switch it on 10 seconds later, and try it again;  Check that whether is SIM card is in full contact or not.
System does not call preset telephone in alarm condition	1、 Check the alarm telephone number is correct or not;  Check that if the system is in arming condition.
System calls preset telephone when there is no alarm	1、 Check the sensitivity of the vibration sensor of the existing car alarm; 2、 Switch of the car door is damaged; 3、 Miscontact or low power of the car battery;  The main unit should be kept away from the antenna.



## Instruction Operation

NO:	Instruction	Description	Information Response
1	arm	armed	Car is Armed X:xxxx.xxxxN (Latitude) Y:xxxxx.xxxxE (Longitude) S/Nxxx.Xn (Direction) KMxxx.x (Speed)
2	disarm	disarmed	Car is Disarmed X:xxxx.xxxxN (Latitude) Y:xxxxx.xxxxE (Longitude) S/Nxxx.Xn (Direction) KMxxx.x (Speed)
3	stop	Disable vehicle	Car is Stopped X:xxxx.xxxxN (Latitude) Y:xxxxx.xxxxE (Longitude) S/Nxxx.Xn (Direction) KMxxx.x (Speed)
4	Check or find	Inquiry/Positioning	Car is Armed X:xxxx.xxxxN (Latitude) Y:xxxxx.xxxxE (Longitude) S/Nxxx.Xn (Direction) KMxxx.x (Speed)

Note: When it doesn't receive the GPS signal, it will prompt "not GPS signal" and automatically change to FGSM base station. Code: x, xxx, xxx

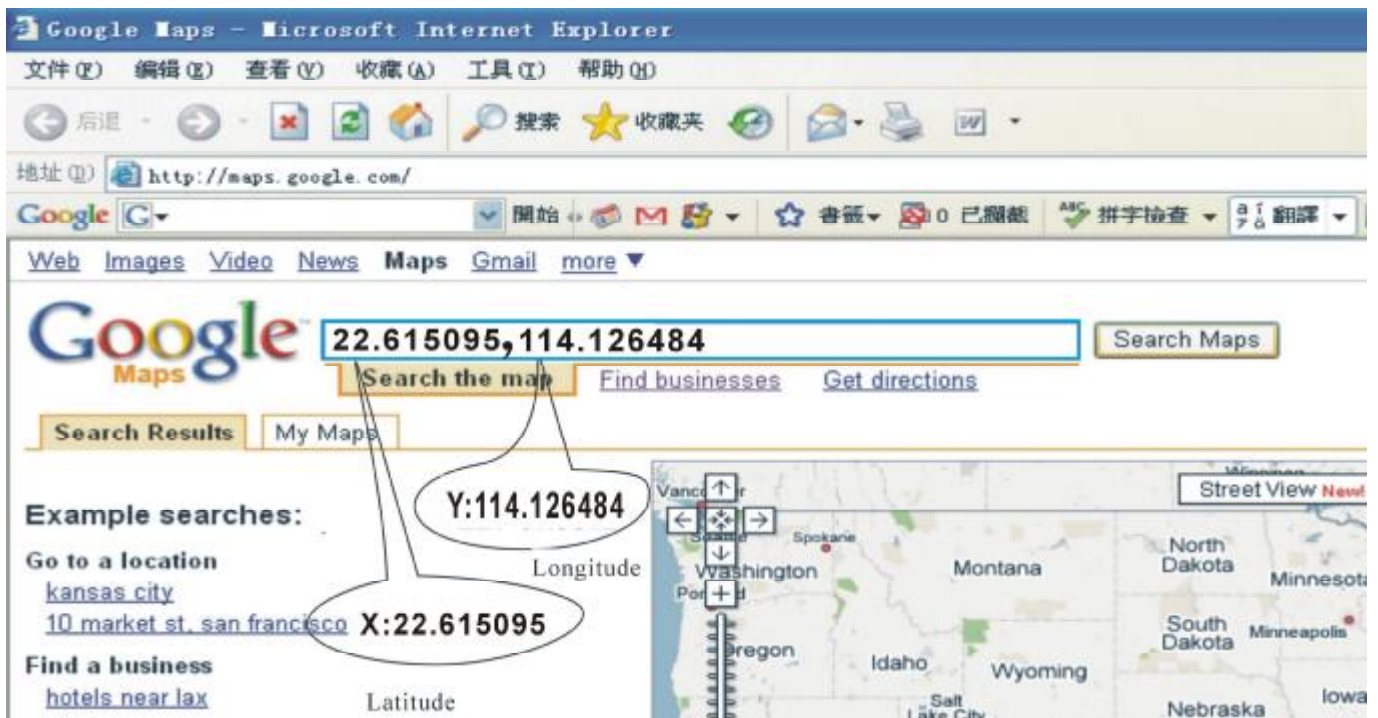
NO:	Instruction	Description
		Car Door is opened X:xxxx.xxxxN (Latitude) Y:xxxxx.xxxxE (Longitude) S/Nxxx.Xn (Direction)

1	door open warning	KMxxx.x (Speed)
2	Vibration warning	car is vibrated X:xxxx.xxxxN (Latitude) Y:xxxxx.xxxxE (Longitude) S/Nxxx.Xn (Direction) KMxxx.x (Speed)
3	Emergency alarming	Emergency Help X:xxxx.xxxxN (Latitude) Y:xxxxx.xxxxE (Longitude) S/Nxxx.Xn (Direction) KMxxx.x (Speed)
4	power off alarming	Power Supply Failed X:xxxx.xxxxN (Latitude) Y:xxxxx.xxxxE (Longitude) S/Nxxx.Xn (Direction) KMxxx.x (Speed)

## Methods for Independent Position Inquiry in English Network

### 1. Inquiry through google maps

After you open the web page, directly input :http://maps.google.com/ at the address column to enter the map homepage.



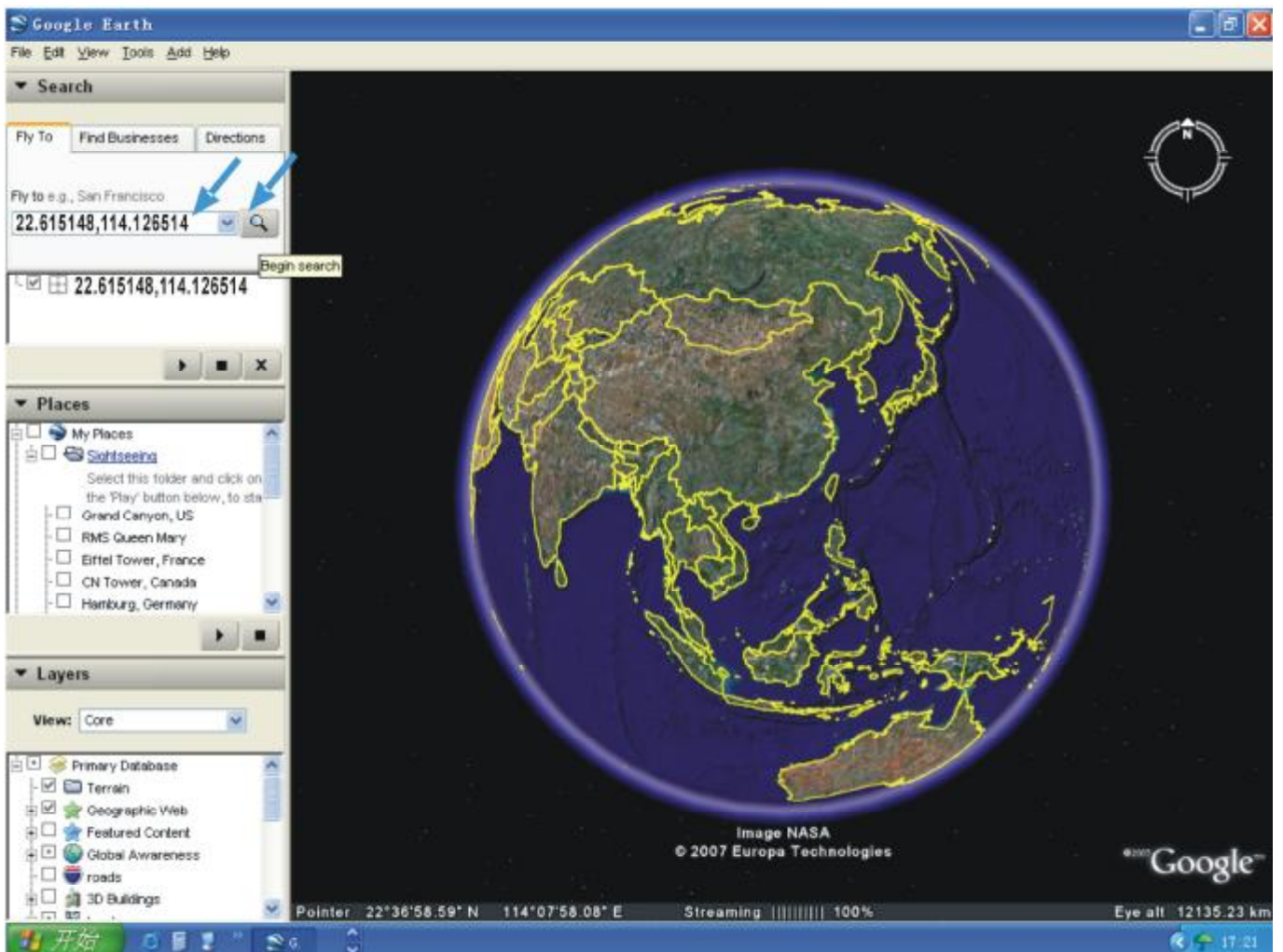
Inputting the latitude and longitude, you can get the current position of your car.

## 2. Inquiry through google earth

<http://earth.google.com/>

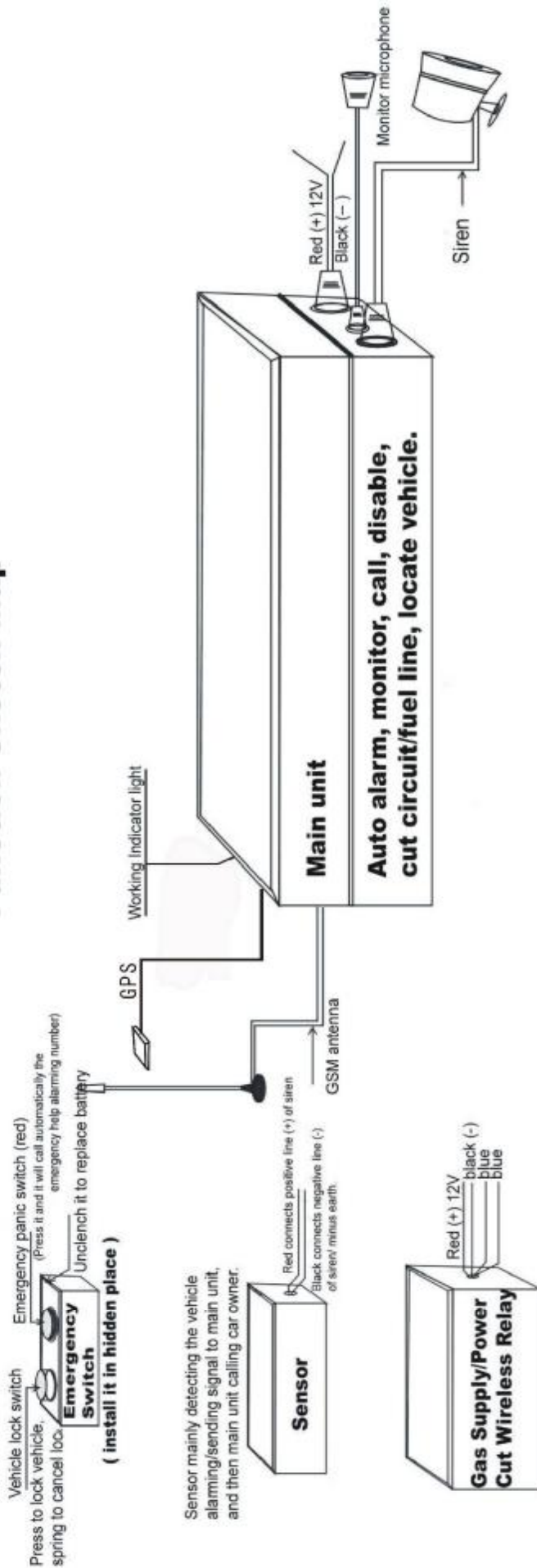
Please download a google software at the website: <http://earth.google.com/>.

Open the google earth software and input the latitude and longitude as shown in the follow chart:





## WIRELESS GSM CAR ALARM(F-900C) Function Sketch Map

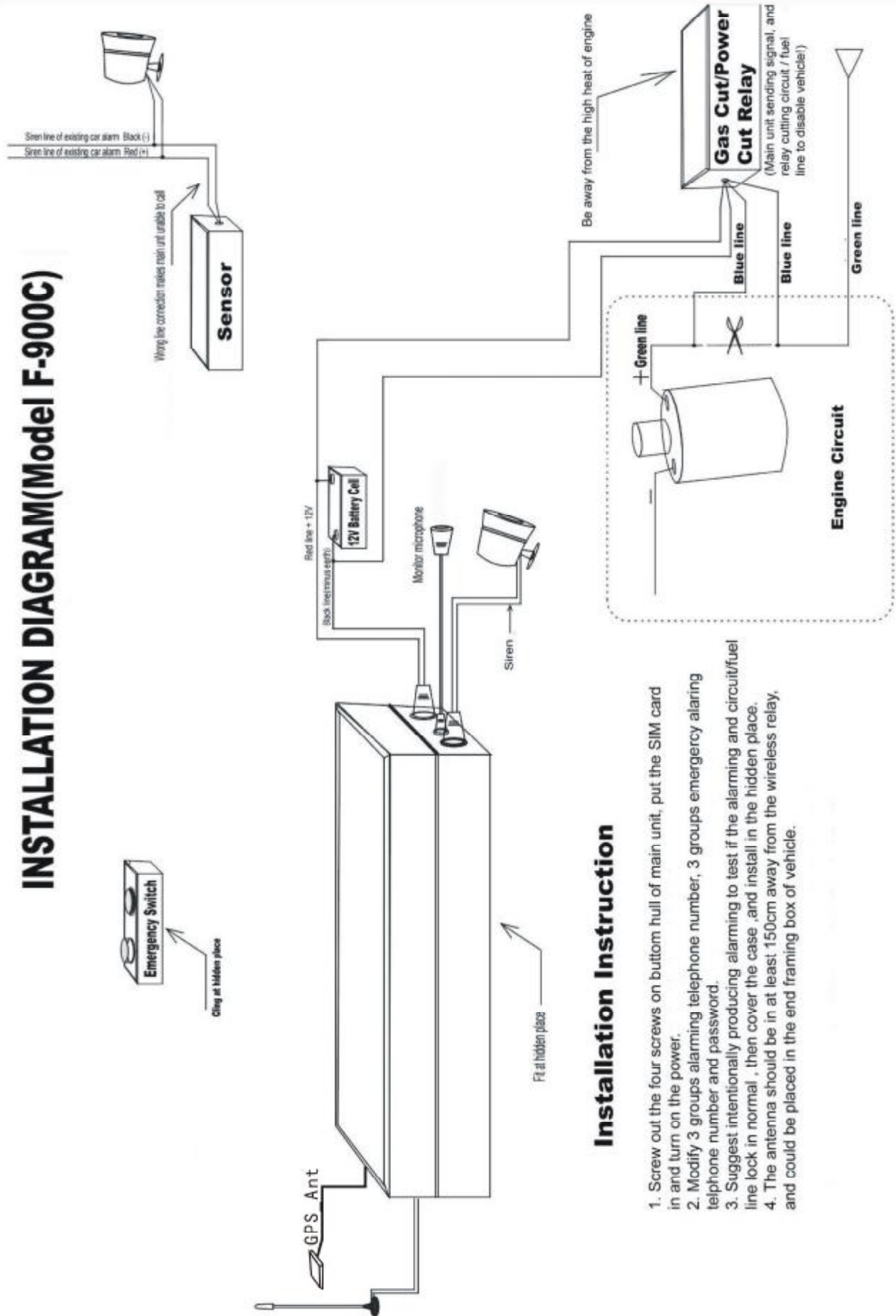


Main unit sending signal, and relay cutting circuit / fuel line to disable vehicle.

### Modify alarming telephone number/password:

First, call the system telephone number, input 6-digit passwords provided by the factory (123456). Then, follow the voice instruction to enter "Modify password" and "Modify telephone number" menu to do the setup, after modifying successfully, intentionally produce alarming to test if all functions in normal. If forgetting password, users can intentionally produce alarming to enter the system and remodify the password.

# INSTALLATION DIAGRAM (Model F-900C)



## Installation Instruction

1. Screw out the four screws on bottom hull of main unit, put the SIM card in and turn on the power.
2. Modify 3 groups alarming telephone number, 3 groups emergency alarming telephone number and password.
3. Suggest intentionally producing alarming to test if the alarming and circuit/fuel line lock in normal, then cover the case, and install in the hidden place.
4. The antenna should be in at least 150cm away from the wireless relay, and could be placed in the end framing box of vehicle.