



2-PORT USB KVM SWITCH WITH USB HUB



User's Manual

Table of Contents

I.	Introduction	3
	1. Features.....	3
	2. Package Contents.....	3
II.	Specifications.....	4
	1. General	4
	2. Connectors.....	5
	3. LED Indicators.....	6
	3.1 Host Indicators.....	6
	3.2 USB Downstream Port Indicators	6
III.	2-port USB KVM installation	7
	1. System requirements	7
	2. Hardware installation.....	8
	3. Windows 98/98SE installation	9
	4. Driver installation.....	10
	4.1 OS without driver installation	10
	4.2 Windows 98//98SE	10
	5. On-Screen-Display(OSD) utility software installation for Windows	15
	6. Using the OSD Program.....	18
	6.1 Activating the OSD Program	18
	6.2 Interpreting the OSD window	19
	6.3 Switching the active host with the OSD Program	20
	6.4 Hiding and closing the OSD Program	21
IV.	Operate the 2-port USB KVM.....	22
	1. USB host Smart Switch	22
	2. Manual Switch by push button.....	22
	3. Hot Key Switch(PS/2 Keyboard).....	22
	4. On-Screen-Display(OSD) Switch (Windows).....	22
	5. AutoScan	23
	6. Sun Micro System Function Emulation	24
V.	Application Notes	25

2-port USB KVM Switch

I. Introduction

Thank you for choosing the 2-port USB KVM Switch. With its set of PS/2 keyboard and mouse ports, 3 USB downstream ports, 2 upstream USB ports, and 3VGA ports, now you can operate 2 computers with just 1 monitor, 1 keyboard, and 1 mouse and share the USB devices connected to the KVM.

1. Features

- Controls 2 PCs with one PS/2 or USB keyboard, one PS/2 or USB mouse, and one monitor.
- Supports Windows, Linux, Mac OS9/OSX, Sun Micro Solaris 8
- Supports USB to PS/2 keyboard and mouse conversion; eliminates the need for one set of keyboard and mouse cables.
- Supports 3 USB downstream ports (perfect for sharing USB scanners, USB printers, and USB CD-RW, etc.)
- Supports 3 types of switching: hardware push button, hot keys on PS/2 keyboard, and On-Screen-Display (OSD) utility software (for Windows).
- OSD utility indicates:
 - i. Power status of connected computer(s).
 - ii. Active host computer.
- Supports VGA resolutions up to 2048x1536.
- Plug and Play. No software driver is needed for PS/2 mouse and keyboard operation.

2. Package Contents

The product you purchased should contain the following equipment and accessories:

- 2 port USB KVM Switch
- CD with users manual, On-Screen-Display(OSD) utility

II. Specifications

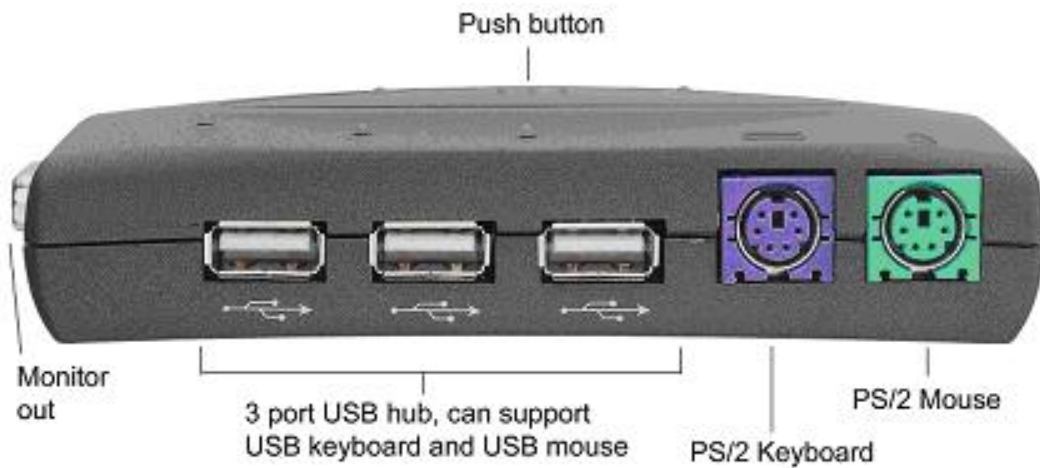
General

Model	DC-11201
Complies USB revision	USB 1.0, 1.1
Working PC status LED	2
USB upstream port	2
VGA IN port	2
VGA OUT port	1
USB downstream port	3
USB over current LED indicator	3
PS/2 keyboard port	1
PS/2 mouse port	1
Video resolution	2048 X 1536.
Hardware supported	PC/Mac/Sun Micro
OS Supported	Windows 98/98SE/ME/2000/XP, Mac OS9/OSX Linux Kernel 2.3/above Solaris 8/above
Active PC selection	By push button By hotkey (only in PS/2 keyboard) By OSD utility(Windows)

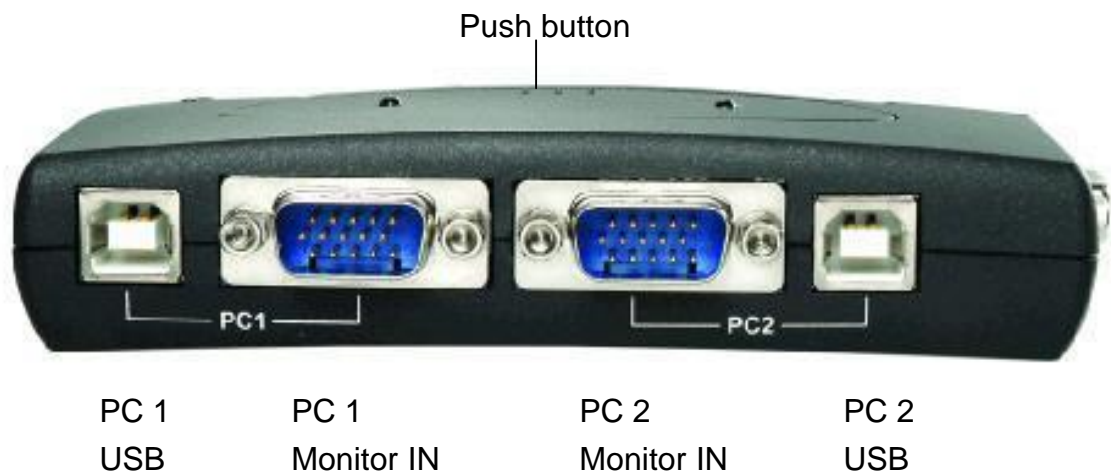
2. Connectors

- 1 Mini-DIN for PS/2 keyboard
- 1 Mini-DIN for PS/2 mouse
- 3 USB type A downstream connectors
- 2 USB type B upstream connectors

2 VGA input connectors (HDB15 Female), and one VGA output connector (HDB15 Female).



Front View



Rear View

3. LED Indicators

3.1 Host Indicators

Off: no host PC is connected or the PC power is off.

Red: when host PC is available and active.

3.2 USB Downstream Port Indicators

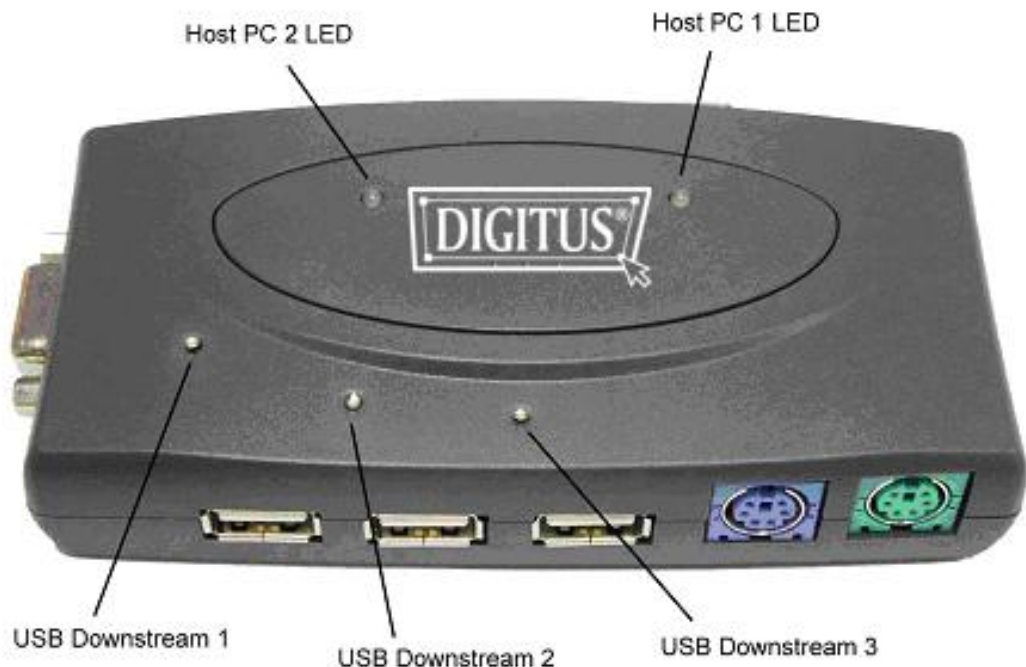
One LED for each USB downstream port:

Off: USB port is not ready for USB device connection

ON (Green): USB port is ready for USB device connection

Note:

If over-current situation occurs for certain USB downstream ports, the corresponding USB indicator will turn **OFF** to indicate that this port is not working now. When over-current situation is solved, the USB indicator will turn **ON** again.



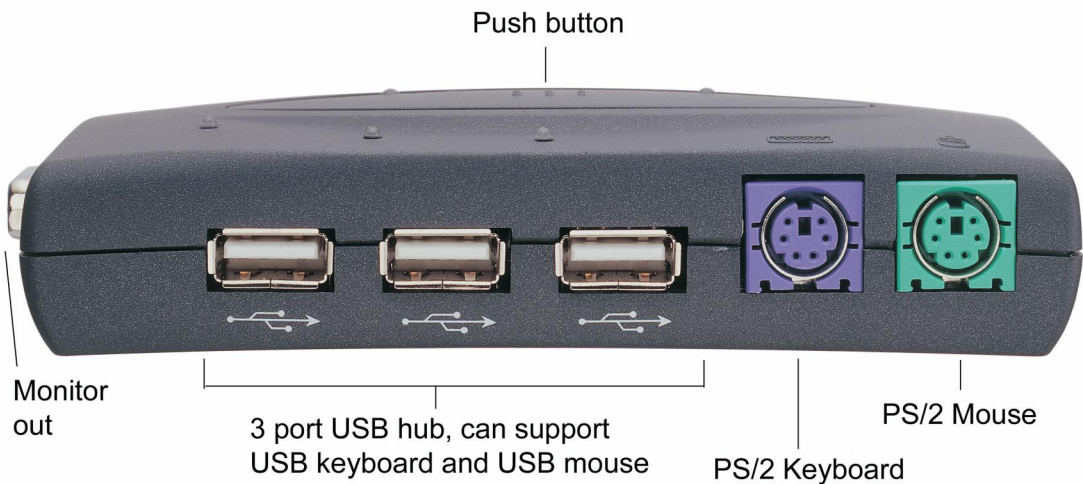
III. 2-port USB KVM Switch installation

1. System requirements:

- **Computer:** USB port, VGA port
- **Operating System:** Windows 98/98SE/2000/ME/XP, Mac OS9/OSX, Linux Kernel 2.3 or Later, Solaris 8.
- **VGA Cable:** 1 VGA female-to-male cable per computer
- **USB Cable:** 1 USB cable with one Type-A end and one Type-B end per computer

2. Hardware installation:

- a. Connect the USB cable's Type-A end to the computer's USB port, and the cable's Type-B end to the KVM's PC1 USB upstream port.
- b. Connect the VGA male-to-male cable between the VGA port on the computer's video card and the KVM's PC1 monitor IN.
- c. Repeat steps a-b for the second computer, using the PC2 USB port and monitor IN on the KVM.
- d. Connect the monitor VGA cable to KVM's monitor output port.
- e. Connect PS/2 keyboard and mouse to the KVM's PS/2 ports or USB keyboard and mouse to the KVM's USB downstream ports (Except the Windows 98/SE).
- f. For the users who is using Window 98/SE, please go to next chapter for installation.
- g. Power on the computers and make sure that the USB port is enabled and working properly.



Window 98/SE installation :

For the users of Window 98 and 98/SE system, will need a different step of installation. After the hardware installed, please follow up these steps to install the KVM switch :

Step 1 : Remove the PS2 mouse and Keyboard devices from the USB KVM Switch and plug them into PC

Step 2 : Turn on the power of the PC

Step 3 : Use the USB KVM Switch push button to switch the screen to the target PC which has Windows 98/SE system.

Step 4 : Follow up the chapter of 4.Driver installation and finish the driver installation

Step 5 : Remove the PS2 mouse and keyboard from the PC and plug into USB KVM Switch

4. Driver installation:

4.1 OS without driver installation

The 2-port USB KVM Switch does not need driver installed for the following operating systems.

- a. Windows 98/SE/ME/2000/XP
- b. MAC OS9/OSX
- c. Linux Kernel 2.3 or above
- d. Sun Micro Solaris 8 or above

4.2 Windows 98/98SE:

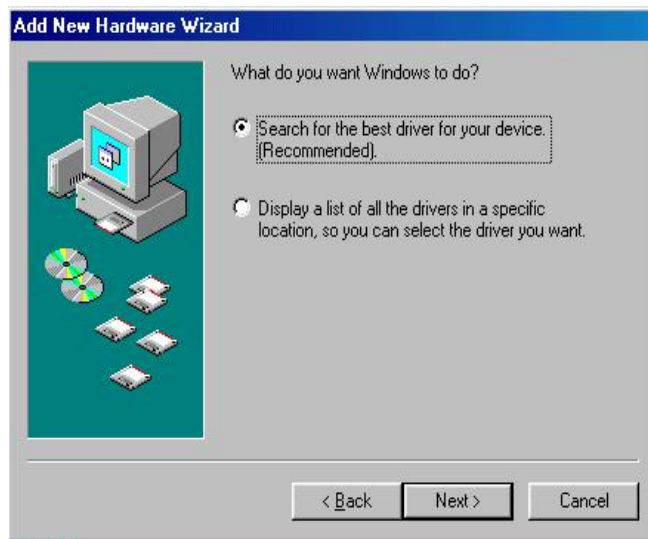
After you connect the 2-port USB KVM Switch to your PC, Win 98 will automatically detect the device and prompt for the driver installation. Please install the KVM by following the instructions from **Step A-H**. Please have your Windows 98 CD ready.

Step A



A. Click "Next" to Continue

Step B



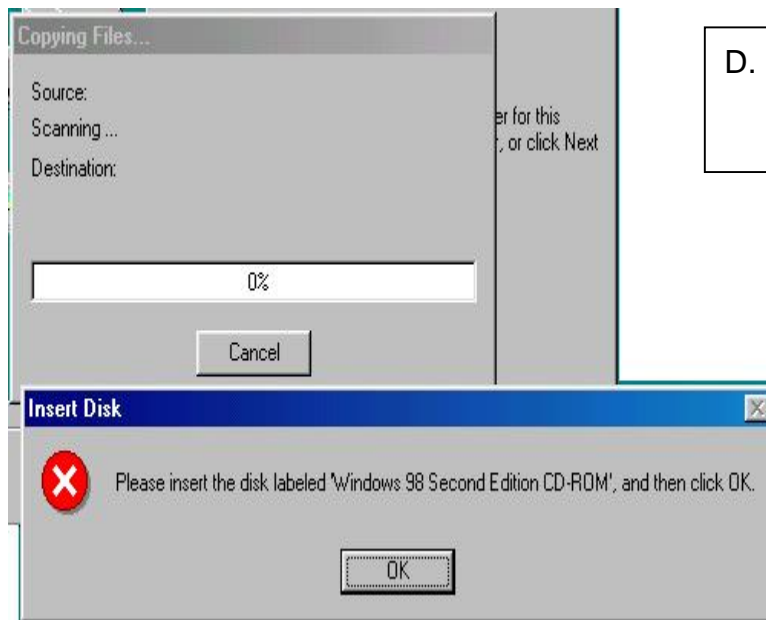
B. Click “Next” to initiate the search for the best driver for your device.

Step C



C. Click “Next” to start and search.

Step D



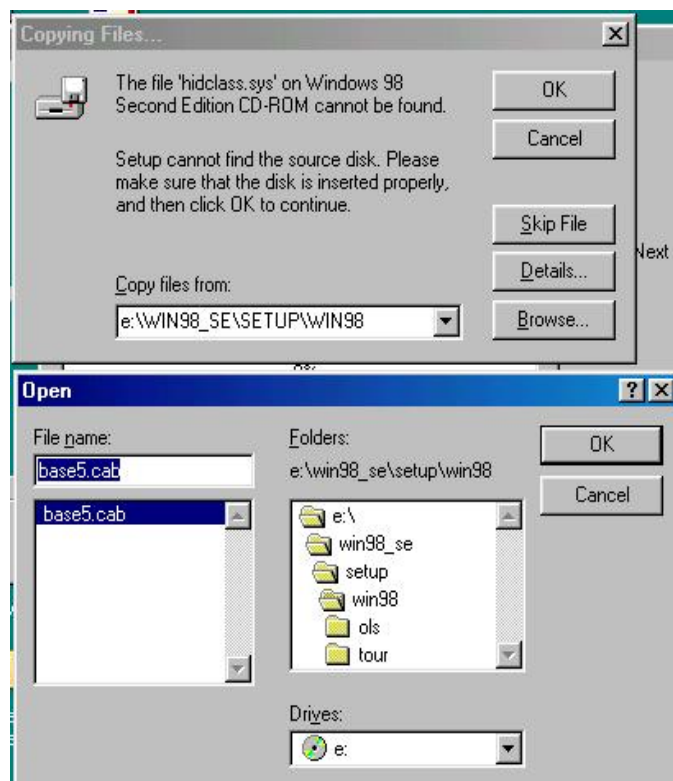
D. Click "OK" to continue

Step E



E. Click "Next" to continue

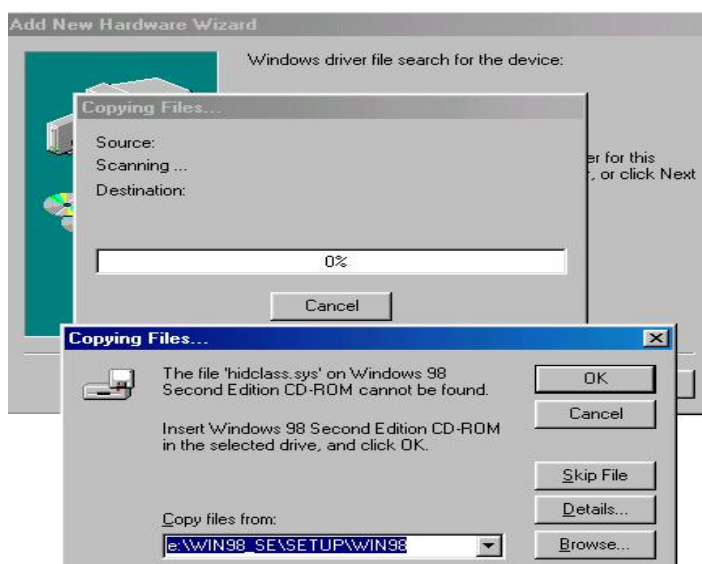
Step F



F. Please specify the location of the Windows source disk and Click “OK” to continue. You may use “Browse” to locate the driver. (Ref Figure F)

*Note: Your hidclass.sys file might be located in a different directory from the figure above.

Step G



G. Click “OK” to continue

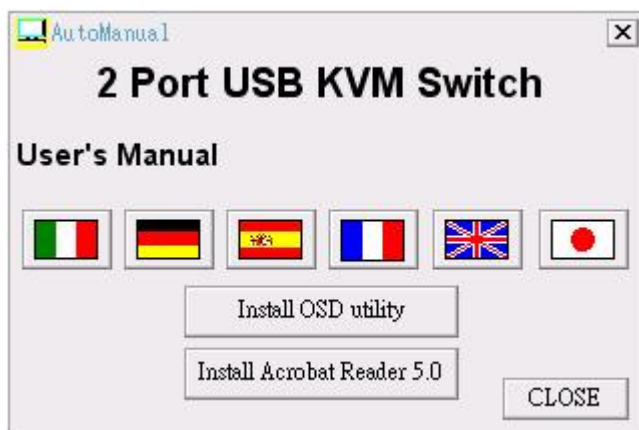
Step H



H. Click “Finish”,
Windows has finished
installing the USB Human
Interface Device driver for
PS/2 keyboard & mouse.

5. On-Screen-Display(OSD) utility software installation for windows

Place the enclosed CD into your CD-ROM drive. The AutoManual screen will automatically pop up on your monitor. Click the “Install OSD utility” button to proceed. If the AutoManual screen dose not present, then please use the file explorer to choice the CDROM driver, and execute the AutoManual.exe.



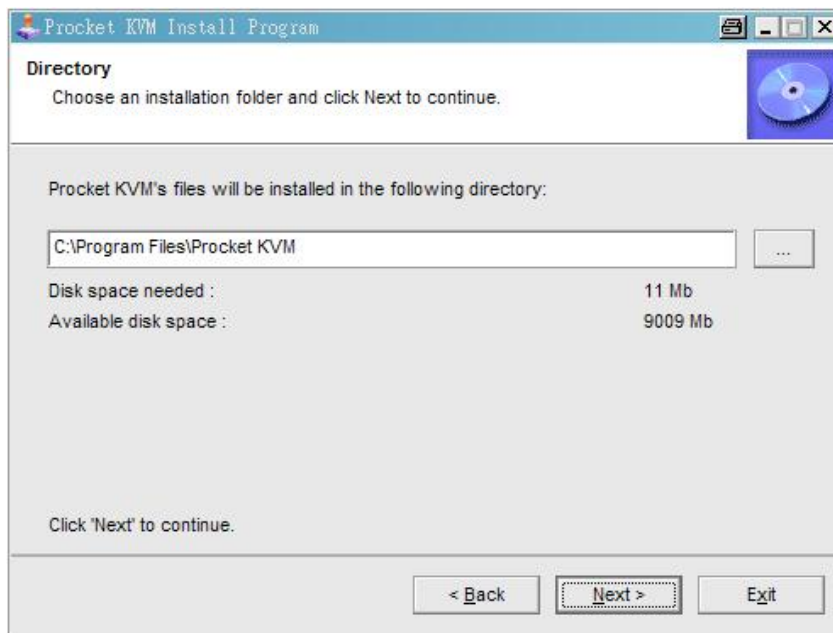
Click the button of
“Install OSD Utility”

Step A



A. Execute
OSD2Port.exe in the
CD.

Step B



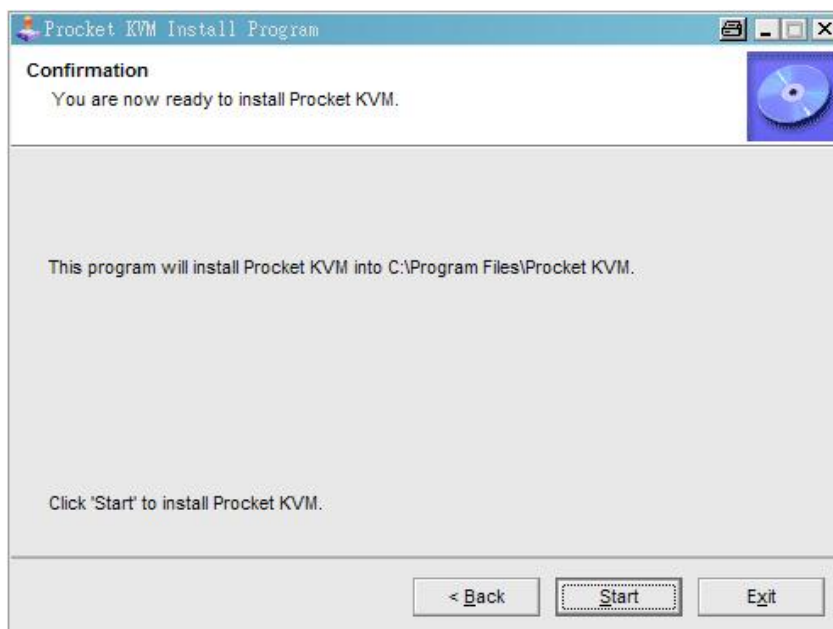
B. Click
“Next” to
continue

Step C



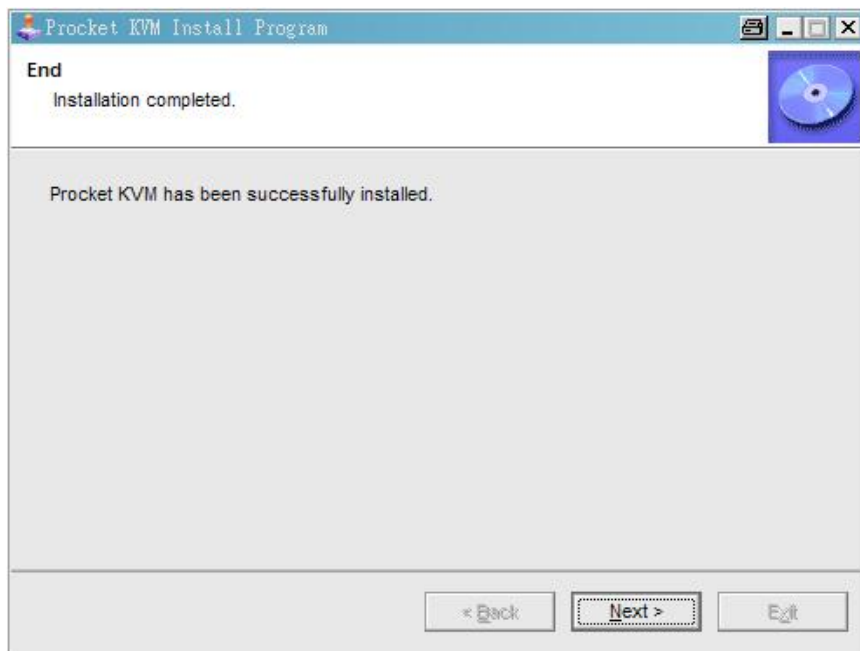
C. Click “Yes”
to continue

Step D



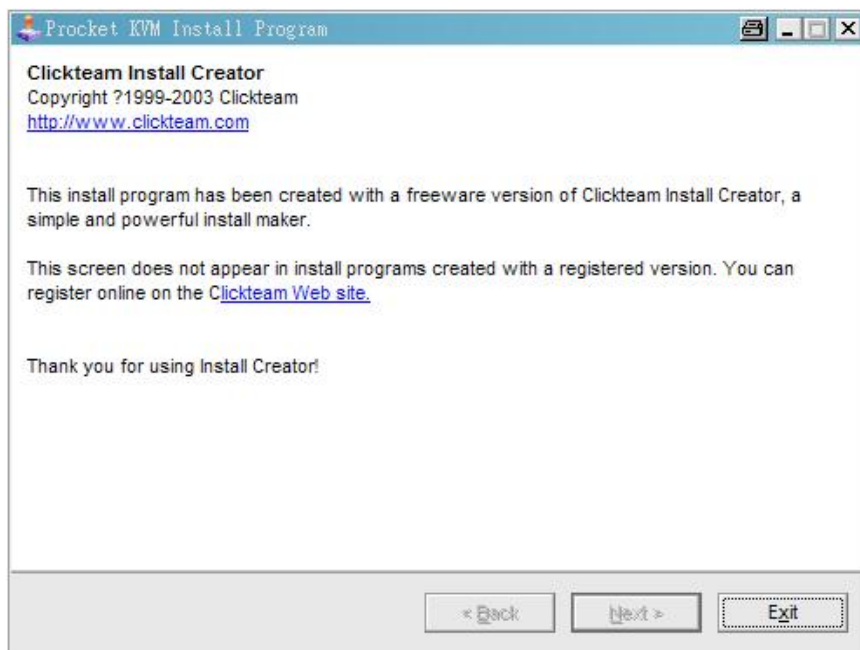
D. Click
“Start” to
continue

Step E



E. Click
"Next" to
continue

Step F

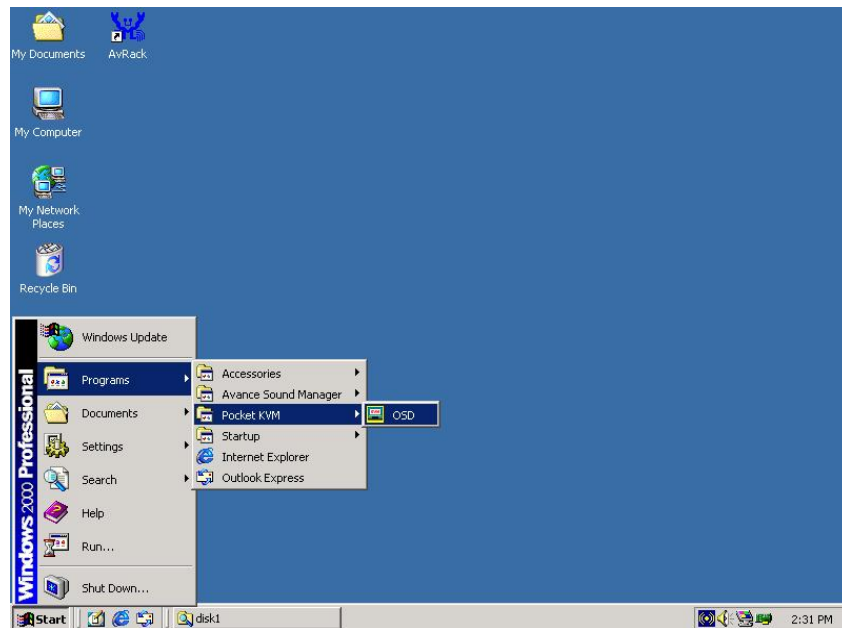


F. Click "Exit"
to complete
setup

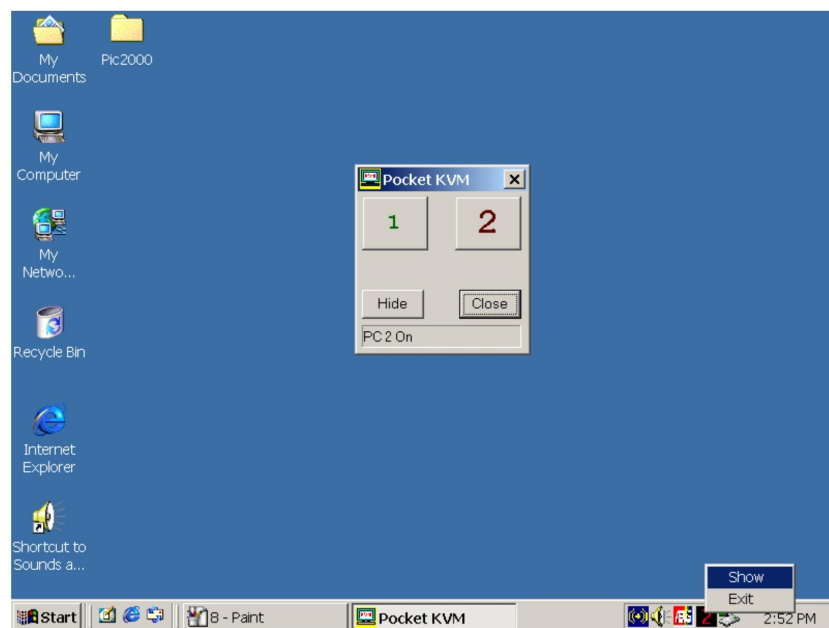
6. Using the OSD Program

6.1 Activating the OSD program

- From Start Menu -> Program -> Pocket KVM -> OSD

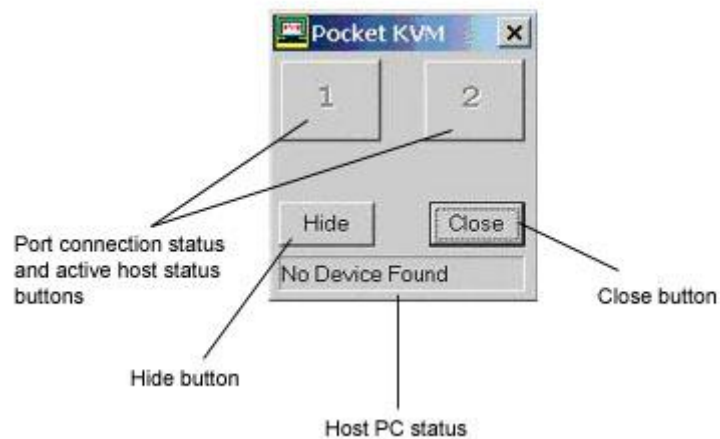


- OSD will start.



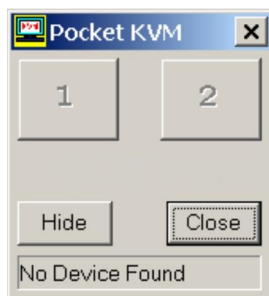
6.2 Interpreting the OSD window

The OSD indicates the status of the connections, host PC and the USB device.



There are four different status:

A. “No PC Found” indicates no PCs are connected to the Pocket KVM or that connected PCs are off.



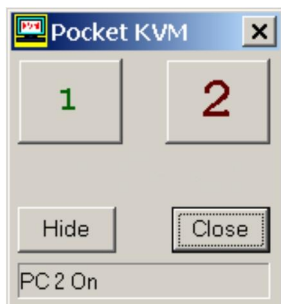
B. “PC 1 On” indicates the first port has a PC connected to it, the PC is on and the active host. The second port either has NO PC connected to it, or the PC is connected, but not on.



C. “PC 2 On” indicates the second port has a PC connected to it, the PC is on and the active host. The first port either has NO PC connected to it, or the PC is connected, but not on.

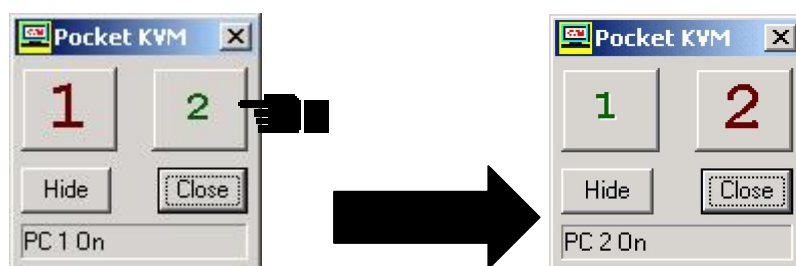


D. Both ports have PCs connected and on. The red letter and larger numeral indicates the second port is the active host. The green letter and smaller numeral indicates that the first port is NOT the active host, but is available for connection.

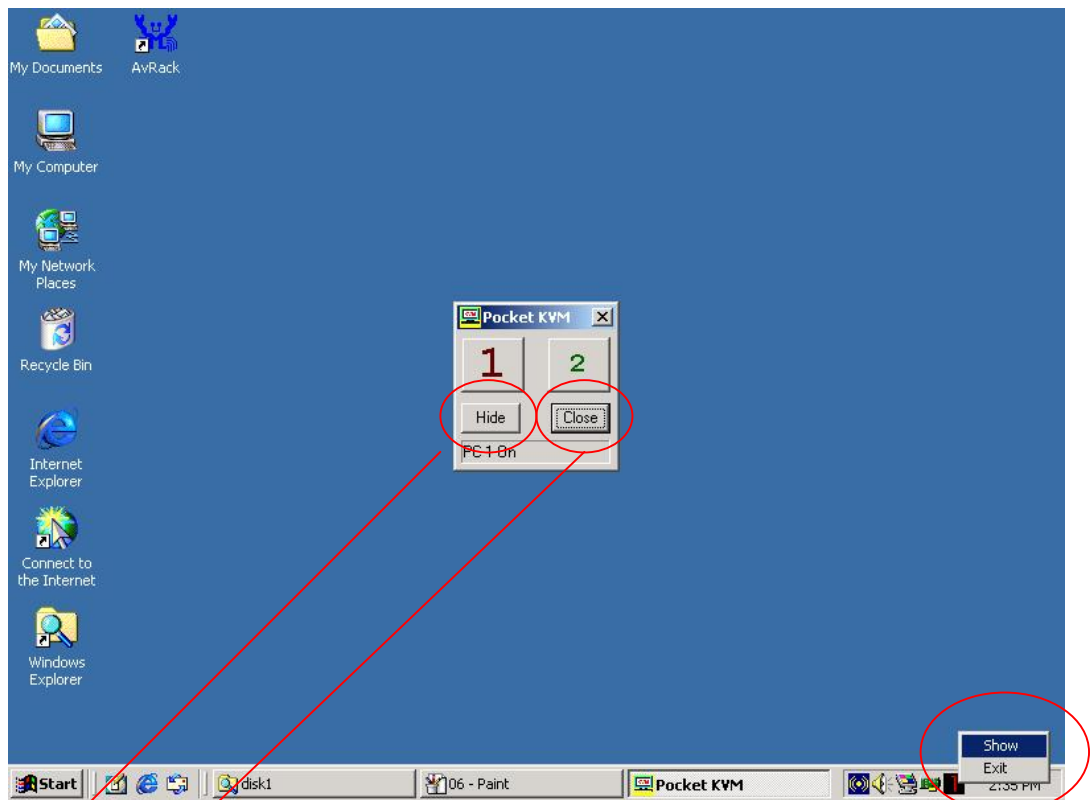


6.3 Switching the active host using the OSD program

Using the mouse, simply click on the button of the port that you want as the active host. The program will automatically switch the active host and the numbers on the button will change accordingly. ** Note: If you attempt to switch the active host to a port that does not have a connection or a PC that is on, an audible error alarm will sound.



6.4 Hiding and closing the OSD program



- When you click the "Hide" button, OSD program window will hide in Taskbar.
- When you click the "Close" button, OSD program will exit.
- If OSD program is hidden in Taskbar, you can right click on the taskbar icon to show or close the program.

IV. Operate the 2-port USB KVM Switch

1. Manual Switch by push button

You can switch to the next available active USB host connection by pushing the switch button on the 2-port USB KVM Switch

2. Hot Key Switch (PS/2 keyboard only, not available for USB keyboard)

[Scroll] , [Scroll], [1] or
[Scroll], [Scroll], [2]



You can switch between PC connections by using the following two-step Hot Key sequence. To send commands to the USB KVM Switch, press the [Scroll] key twice (Step 1), then press key [1] or [2] (Step 2) to switch between the two PCs. (If you press key [1] or [2] on the number pad, the keyboard, mouse will not be switched.)

Note: When using the two-step Hot Key sequences, the keys must be pressed within 3 seconds, otherwise the Hot Key action will be canceled. After pressing the Scroll key twice, the Scroll LED will start blinking and wait for the Step 2 hotkey, after pressing any key or over 3 seconds, the keyboard LED will back to the original status.

3. On-Screen-Display (OSD) Switch (Windows only)

Activate the OSD and click the port number on the OSD. The active host will change to the indicated port.

4. Auto-Scan Function

Holding the USB KVM Switch push button down for 3 seconds will activate AutoSan Mode; pressing the USB KVM Switch push button while AutoSan Mode is active, will turn off the AutoScan Mode and the monitor screen will jump back to the original Host.

When you activate the Auto-Scan mode, the USB KVM Switch alternates between the two PCs and displays them on the monitor. Each PC is displayed for 5, 10, 15... 50 seconds:

Auto-Scan Interval

[n] *(Available only when Auto-Scan function is ON)

You can change the Auto-Scan interval by pressing the appropriate number key or the number pad keys.

n	Scan Interval
[1]	5 sec.
[2]	10 sec.
[3]	15 sec.
[4]	20sec.
[5]	25sec.
[6]	30sec.
[7]	35sec.
[8]	40sec.
[9]	45sec.
[0]	50sec.

5. Sun Micro system Function key emulation :

There are 16 special functions on the Sun Micro system keyboard, the USB KVM Switch can emulate these function keys via the PS/2 keyboard (it won't work on the USB keyboard). Here is the mapping table for these function operation. To active these emulation on the PS/2 keyboard, you have to press the LEFT Window KEY first (this key usually is located between the left [Ctrl] and left [Alt]), then choice the second relative key.

Sun Micro System Function Key	PS/2 Keyboard
Stop	L_Win & L_Alt
Props	L_Win & L_Ctrl
Compose	L_Win & L_Shift
Front	L_Win & F1
Open	L_Win & F2
Find	L_Win & F3
Again	L_Win & F4
Undo	L_Win & F5
Copy	L_Win & F6
Paste	L_Win & F7
Cut	L_Win & F8
Help	L_Win & F11
Power	L_Win & F12
Mute	L_Win & 1
Volume Down	L_Win & 2
Volume UP	L_Win & 3

V. Application Notes

1. **IMPORTANT:** Please select “Safely Remove Hardware” or “Eject” for USB devices connected to any of the 3 downstream USB ports on the 2-port USB KVM Switch before switching between the hosts. Switching hosts is equivalent of removing the USB devices, which may damage your USB devices or data if not removed properly by the OS.
2. The 2-port USB KVM Switch normally derives its own power from host computer. When the 2-port USB KVM Switch and the USB port of computer are connected, the LEDs will turn red, and the keyboard and mouse can operate.
3. Unknown Device:
If the installation process has been completed and some of the devices still don't work, please go to: My Computer/Property/Device Manager/USB, and check COM port, Printer, Keyboard, Mouse, or Hub to see if any “Unknown device” icons appear on the screen. You may need to “Remove” and “Refresh”, then start the installation process again. If after trying the above mentioned process and your device still does not work, please contact your retail dealer.

FCC Statement

This device generates and uses radio frequency and may cause interference to radio and television reception if not installed and used properly. This has been tested and found to comply with the limits of a Class B computing device in accordance with the specifications in Part 15 of FCC Rules. These specifications are designed to provide reasonable protection against such interference in a residential installation. However, there is no guarantee that interference will not occur in a particular installation. If this device does cause harmful interference to radio or television reception, which can be determined by plugging the device in and out, the user can try to correct the interference by one or more of the following measures:

- Reorient or relocate the receiving antenna.
- Increase the separation between the device and receiver.
- Connect the computer into an outlet on a circuit different from that to which the receiver is connected.
- Consult the dealer or an experienced radio/TV technician for help.

Safety Information:

This device may only be operated in enclosed, dry rooms. To prevent the risk of fire or electrical shock, the device must be protected from moisture. In the event of a defective power plug, please contact an authorized retailer. In the event of damage to the housing or the power plug, do not operate. Do not open the device. Repairs may only be performed by an authorized retailer.

Note:

In the event of incorrect installation and improper use in a residential area, the device may cause disruptions in radio devices and other electronic devices. Proper use means that the device is operated with shielded connector cables as far as possible, for network products also with shielded cables of category 5e and higher. The device was tested and lies within the limits for computer accessories of class A according to the requirements of EN 55022.

Warning:

This is a class A device. This device can cause radio interference in residential areas; in this case, the operator may be required to perform and bear the costs for appropriate measures.

Conformity Declaration:

The device fulfils the EMC requirements of EN 55022 class A for ITE and EN 55024. Devices with external or built-in power supply also fulfil the requirements of EN 61000-3-2 and EN 61000-3-3. The basic protection requirements of the "EMC Directive" 89/336/EEC are therefore fulfilled. The CE conformity has been certified. The corresponding declarations are available from the manufacturer.

Trademarks:

All company, brand and product names used in these instructions are trademarks or registered marks of the corresponding companies.