

WattsVIEW™ Power Monitor Model: DC-10000

DC Power Monitoring Made Easy

Models: DC-10000 Serial
DC-1000 USB
DC-25000

OWNERS MANUAL

Table of Contents

WattsVIEW tm Power Monitor Model: DC-10000.....	1
Safety.....	2
Introduction.....	2
Applications.....	3
GPRS / SMS Modem usage (Solar Panel / Wind turbine monitoring).....	3
Wattsvietm DC Power Monitor Overview.....	4
Wattsvietm Serial DB 9 Pin Connector.....	4
Wattsvietm USB (Mini USB connector).....	5
Software Main Screen.....	5
SPECIFICATIONS.....	6
APPLICATIONS.....	7
SOLAR PANEL POWER MONITORING / LOGGING.....	7
HARDWARE SETUP INSTRUCTIONS.....	8
SOFTWARE SETUP INSTRUCTIONS.....	12
FTDI Serial Port Drivers	12
The FTDI USB to serial converter driver will need to be installed if you have purchased a FTDI USB to Serial Converter , or if you have purchased a Wattsvietm USB power monitor sensor. (Shown below)....	12
SOFTWARE OPERATION.....	12
Log File Viewer.....	16
DIGITAL IO PORT.....	17
CUSTOM SOFTWARE FOR YOUR APPLICATION	17
Voltage Scaling / Dividing.....	18
APPENDIX A: Windows Installation	19
APPENDIX B: MAC OS X Installation.....	22
APPENDIX C: User Manual Revision History.....	24
Hardware Accessories.....	24
RCOMMENDED SERIAL CABLE.....	24
RECOMMENDED POWER SUPPLY.....	24
TECHNICAL SALES & SUPPORT.....	24

Safety

When installing and operating this power monitor

1. You are responsible for following all electrical code & safety guidelines that are established in your country.
2. Make sure all lines have adequate over current protection such as fuses and breakers. Understand that if you do not use over current protection high current cables and wires can short out and cause liquid metal to form and burn a person very badly or cause death.
3. By using this product, you agree that before operating your power monitor, you will have a licensed electrician look over your work just to make sure it is safe to operate and meets regulations and code.

Introduction

The WattsVIEW power monitoring software and module allows a person to convert a regular computer into a data logger which will monitor

- DC Voltage
- Current (Amps)
- Watts
- Watt Hours
- Amp Hours

Up to 10 *Wattsview*™ power monitoring sensors can be used at one time if they share a common ground with each other and the computer they are plugged into. If they do not share a common ground then you will need to use a USB isolation module like the ones sold [here](#). The data is stored in a Log directory on the computer in tab delimited text file. One log file per sensor per day is created. For example, two *Wattsview*™ power monitoring sensors would generate about 60 log files each month. The software offers an adjustable sampling interval with a default of one data point every 30 seconds. The smallest logging interval is 1 seconds at which approximately 86,400 entries a day would be made for each *Wattsview*™ sensor you have connected to your computer.

HARD DRIVE SIZE REQUIREMENTS

One WattsVIEW sensor can generate about 5 Gig of data a year at a 1 second logging interval. So if you have a 50 Gig hard drive or bigger, then you will be fine.

CPU / MEMORY REQUIREMENTS

Your computer should have at least 2 Gig of RAM to be able to look at the log history efficiently. An old windows XP laptop can easily do the job when it comes to logging the data, but if you were to select a one year period to look at in the log viewer, then it might choke.

Applications

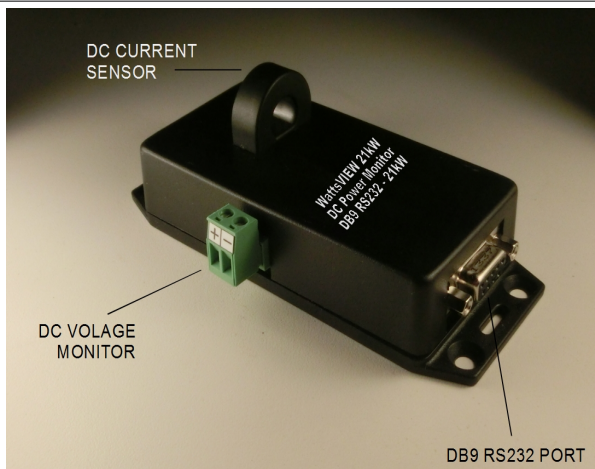
The *Wattsview*™ DC Power Monitor is Well Suited for the Following Applications

- Solar Panel Power Monitoring
- Wind Turbine Power Monitoring
- Bicycle Generator Power Monitoring
- Battery Charging Amp Hours / KWH
- Battery Discharge Power Monitoring
- Hydrogen Production Electrolysis Power Monitoring
- Hydro Generator Power Monitoring
- Salt / Chlorine Swimming Pool Generator Monitoring
- Constant Power Control Systems
- Solid state relay control closed loop power monitoring

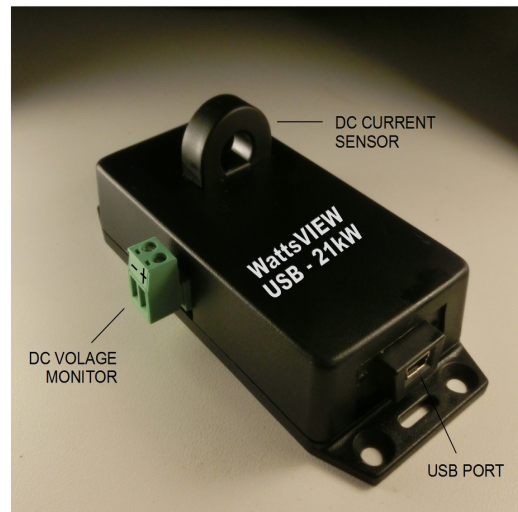
GPRS / SMS Modem usage (Solar Panel / Wind turbine monitoring)

When using the *Wattsview*™ sensor at remote locations where a cell phone wireless grid is method of communication via a GPRS modem, a much lower data rate is typically desired so as to not overwhelm the GPRS / SMS system. A transmission rate of one time each second will often exceed the monthly allowed data for a sim card / data plan. If a slower data rate is required, then download the video tutorial on the <http://wattsview.com/downloads> using the “WattsVIEW Configuration Utility”.

Wattsview™ DC Power Monitor Overview



Wattsview™ with DB 9 Pin Serial COM Port connector



Wattsview™ with Mini USB

The **Wattsview™** DC Power monitor utilizes an open source PIC microprocessor which measures up to 105 Amps of current from a hall effect transducer sensor and measure up to 200 Volts to calculate Watts and Watt Hours. The formula for power is then applied and allows for the calculation of “Watts”.

$$\text{VOLTS} \times \text{AMPS} = \text{WATTS}$$

This data is calculated and transmitted about once every second. The **Wattsview™** power monitor communicates with any serial compatible software such as Hyper terminal or **Wattsview™** free data logging / power monitoring software. (See software details in software installation section).

The **Wattsview™** software connects to the **Wattsview™** sensor through either of two methods:

- 1) RS232 serial port
- 2) USB Cable

Wattsview™ Serial DB 9 Pin Connector

Most computers today do not come with an RS 232 serial port so in order to use the **Wattsview™** Serial with the DB 9 pin connector a USB to serial converter will be needed (Shown to the right). For example the FTDI adapter will work with the **Wattsview™** serial power monitor. (A free software driver for the FTDI must be installed for FTDI converter to work.



This FTDI USB to Serial Converter is [sold online here](#) (Google “FTDI USB to Serial”)

This style of **Wattsview™** with the DB 9 pin connector is especially convenient for a person who has access to many older computers and wants to use one just as a data logger that runs 365 days a year. The **Wattsview™** USB module needs a simple off the shelf USB to Mini cable.

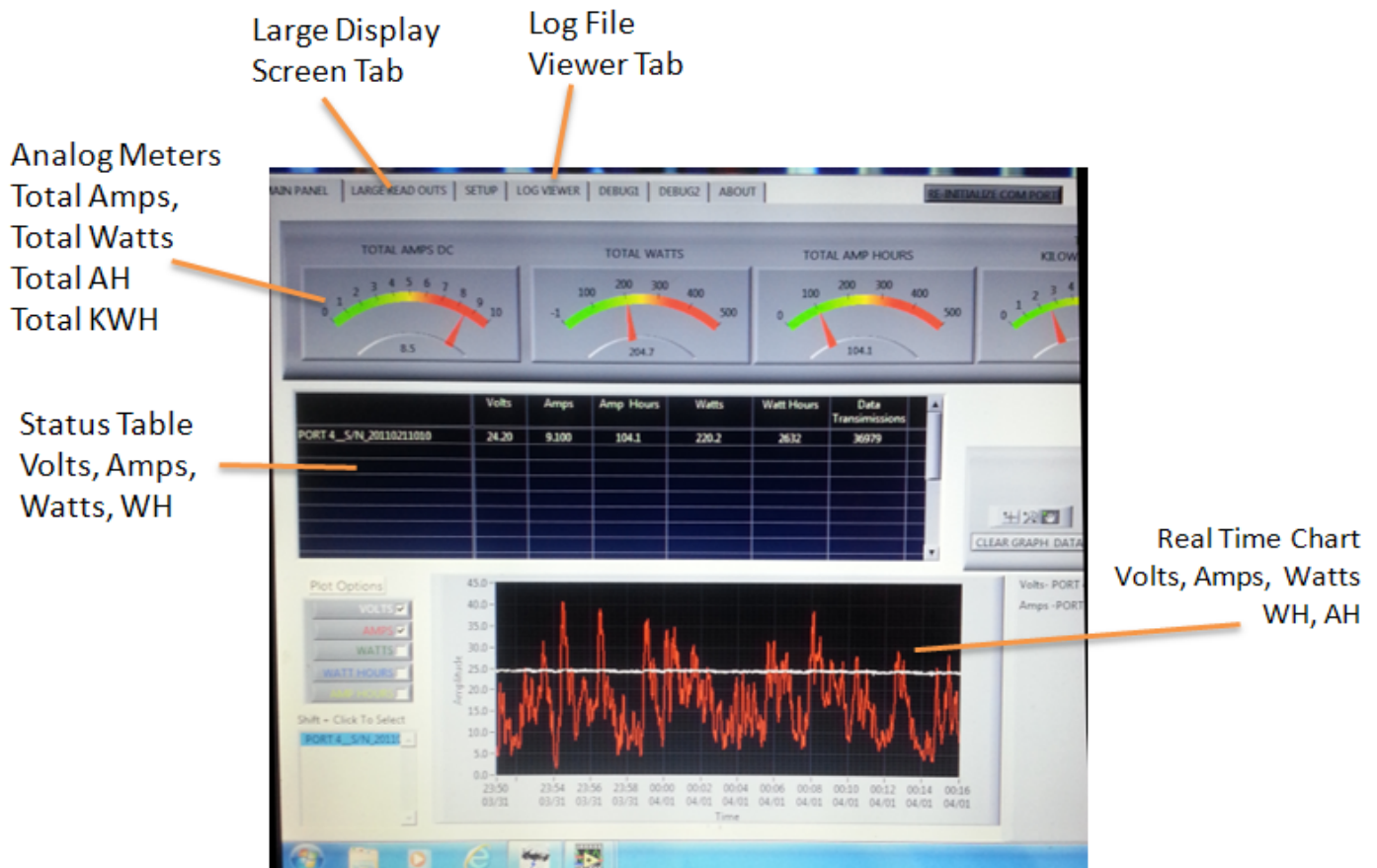
Wattsview™ USB (Mini USB connector)

The **Wattsview™** USB saves the hassle of having to order a separate USB to Serial Converter. The FTDI converter is integrated with the **Wattsview™** sensor so that the sensor can plug directly into the computer using a simple / off the shelf USB A to Mini B Cable (Right). This is a common cable that comes with many digital cameras.



This cable is sold online [here](#).

Software Main Screen



SPECIFICATIONS

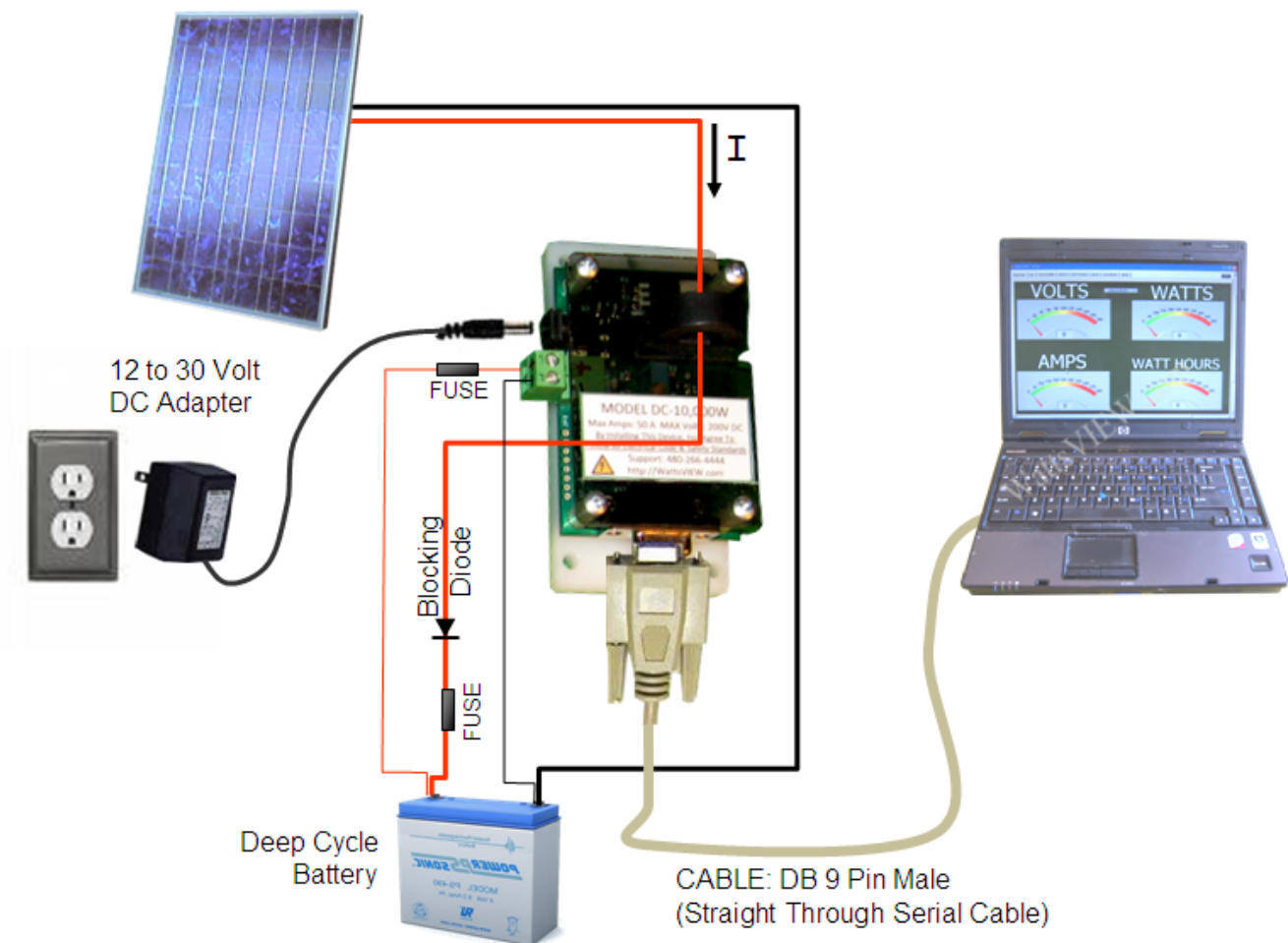
PARAMETER	MIN	MAX
DC Current (Amps)	-75	105
DC Voltage	0	200
MAX WATTS	0	10,000 W
OPERATING VOLTAGE	12VDC	30VDC
SAMPLING RATE	Takes 16 readings over a 0.7 second period and then output the average from those 16 readings.	
Digital IO	8 Digital IO bits that operate from 0 to 5 Volts DC	
POWER SUPPLY CONNECTOR STYLE	2.5mm ID Center Positive	
CURRENT MONITORING METHOD STYLE	Hall Effect Current Transducer (Electrically isolated from your current carrying conductor.)	
POWER CONSUMPTION	< 1 Watt (30 ma @ 12 volts)	
PCB PHYSICAL DIMENSIONS	Just the Circuit Board 3" X 2" Circuit mounted on plate 4" X 2.5"	
Max wire diameter able to be used with current sensor	0.4 Inches (9.2mm) ~Size 6 AWG	
COMMUNICATION STANDARD	RS232 – SERIAL COMMUNICATIONS 9600 BAUD, 8 Data bits, No Parity, No Flow Control. (Three wires used: Tx, Rx, Gnd)	
COMMUNICATION CABLE TYPE	Male to Female Straight Through Cable DB 9 PIN	
COMMUNICATION PROTOCOL	Asynchronous ASCII Numerical Text, no check sum, no handshaking	
DATA STRING EXAMPLE STANDARD MODE	000012.1V 00001.0A 00012.1W 00000.0WH	
TEXT DELIMITER	Spaces	
END OF LINE CHARACTER	CARRIAGE RETURN \r\n	
DATA STRING EXAMPLE (PANEL METER MODE) Model L61001-BL (Red) Or Model L51001-BL (Green)	*0H 00000.0A More info on meters at: HTTP://www.laurels.com/magna_serial.htm	

APPLICATIONS

SOLAR PANEL POWER MONITORING / LOGGING

Below you can see the DC-10,000 sensor is hooked up to monitor a solar panel that is charging a battery. The positive wire from the solar panel is routed through the round current sensor as shown below. The direction you route the wire will affect whether your current is read as positive or negative. As the current flow indicator shows below "I", when you wire your power source to come through the top of the sensor as shown, then it will appear as a positive reading.

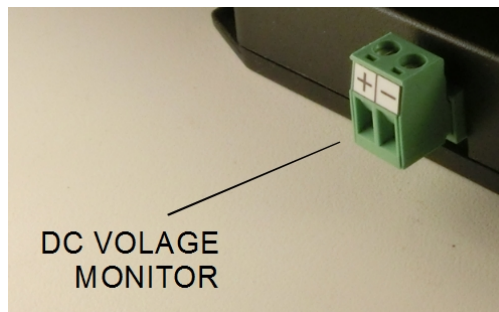
WattsVIEW DC – Simple Solar Power Monitoring Configuration (No Charge Controller)



© WattsVIEW.com

HARDWARE SETUP INSTRUCTIONS

1. **Mounting The Hall Effect Current Sensor** Secure the DC-10,000W to a panel or plate where the circuit board traces can not short out against any kind of metal items. This will destroy the power monitor. You can use stand offs, or plastic spacers for example with some 6-32 screws through the corner mounting holes.
2. **Serial Cable Installation** Connect a male DB9 Straight through serial cable from your computer to the DC-10,000W Sensor. If your computer does not have a serial (com) port, then you will need to use a USB to serial adapter cable like one of the ones [sold here](#). This will require you to install some software drivers first before you plug it in. Such as the FTDI adapter shown in the previous section.
3. **Connecting Voltage Monitoring** Use light gauge wire (Size 18 to 28 AWG stranded) to connect to the green voltage monitoring terminals as shown below. You will need a small flat end screw driver to tighten down the screw terminals. For best results use stranded wire instead of sold wire.



4. **Connecting Operating Power** The operating Voltage requirements power for the DC-10,000W Current sensor are:

DC Volts	12 - 30
Current	30mA
Power Consumption	< 1 Watt
Center post ID	2.5mm

The center of the power connector is positive and has an inner diameter of 2.5mm. The positive input to this connector is diode protected so that if you happen to reverse the polarity to the sensor it will not damage the components on the board.



There are two ways to power this sensor.

- (1) Use an AC wall adapter to 12 volts as shown below in Figure 1 Wall Adapter Power Supply.
- (2) Connect the power input cable to a battery that is 12V or 25V .

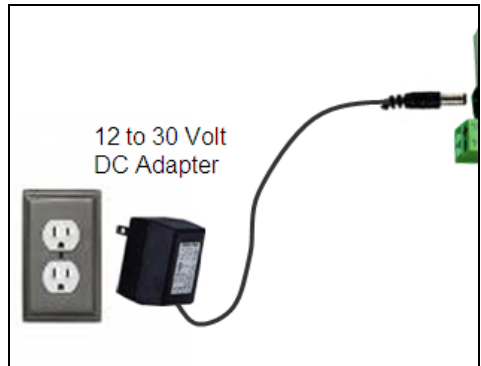


Figure 1 Wall Adapter Power Supply

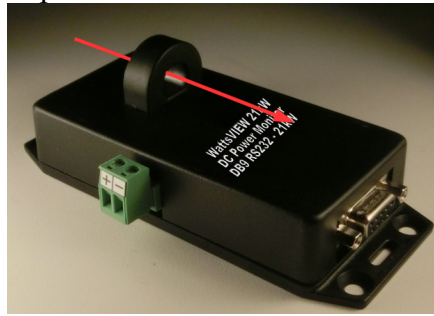


WARNING!

You need to take into account that your computer must share a common ground with the sensor and the ground of the system you are monitoring. Problems usually occur with grounds when the DC voltage to an AC inverter is being monitored, or when a computer that is monitoring the sensor is connected to something that is plugged into a computer, like a large plasma screen.

To take care of this problem a USB isolator must be used to isolate the computer ground from the ground of the system being monitored.

5. **Routing Wire Through Current Sensor** You will need to route one of the two wires coming from your DC power source through the current sensor with the current traveling through the sensor from the top end as shown below. If you do not route it through the correct way, then the current reading will appear as a negative number instead of a positive number. Keep in mind that DC current flows from the positive side of a power source to the negative. That's how you can remember direction of travel.



You can increase the sensitivity and resolution of your current sensor by looping the wire through your current sensor multiple times. For example looping your wire through the sensor 5 times as shown in the picture will increase the amplitude of the current signal by 5x.



There are two scenarios where looping the wire through the current sensor more than once should be considered


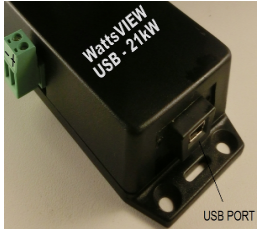
- (1) The current you are trying to measure is a small value such as less than 1 Amp
- (2) You need to have better than 0.1 Amps resolution / accuracy and you don't need the full range of the sensor.

Note: If you use more than one loop through the current sensor then you must adjust the loop count setting in the *WattsvIEW*™ software.

SOFTWARE SETUP INSTRUCTIONS

FTDI Serial Port Drivers

The FTDI USB to serial converter driver will need to be installed if you have purchased a [FTDI USB to Serial Converter](#), or if you have purchased a *Wattsview*™ USB power monitor sensor. (Shown below)

<p><i>REQUIRES FTDI DRIVER INSTALL</i> FTDI USB to Serial Converter</p>  <p>sold online here</p>	<p><i>REQUIRES FTDI DRIVER INSTALL</i> <i>Wattsview</i>™ with Mini USB</p> 
--	--

The same FTDI software driver file will work with either device above. For step by step instructions on Windows Flow go to Appendix A: of this document. For step by step instructions on MAC Installtion go to Appendix B: of this document

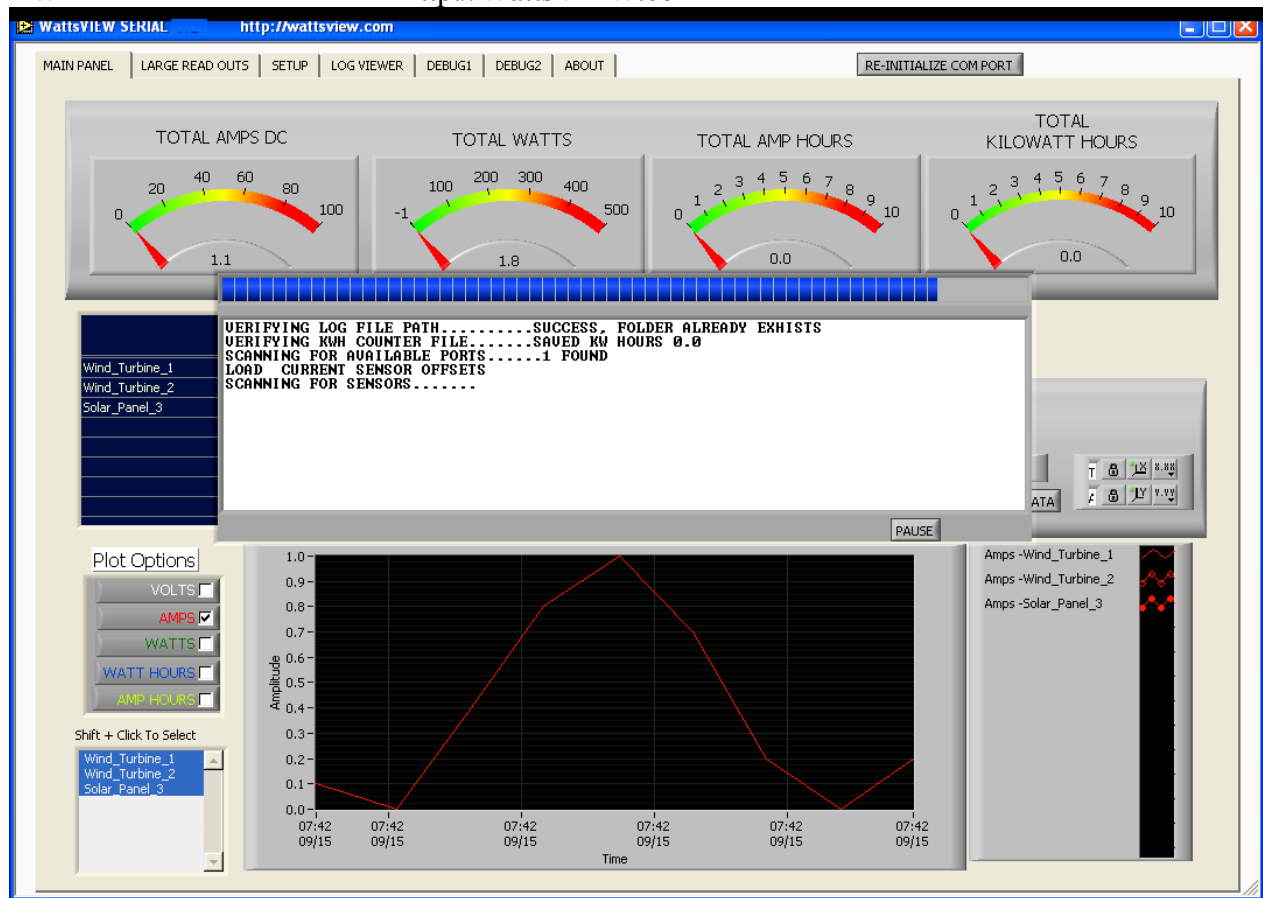
SOFTWARE OPERATION

Launching *Wattsview*™ DC power monitor software

[Windows] Launch the *Wattsview*™ software buy going to your "Start" button on the lower left hand corner of your screen. Select the "Program Files" menu, *Wattsview*™ Serial menu then *Wattsview*™-Serial.

[MAC] Click twice on the wattsview.app file in the folder you selected for install.

The main screen will open and verify the log file path, the KWH path, number of available ports, and number of sensors responding. If there are no sensors, then you will be prompted with the option to use "Simulated" Data where you can pick wind turbines or solar panels to monitor and see simulated data coming into the program.



Wattsview™ Main Screen

The main screen contains a set of panel meters for total Amps, Watts, Amp hours, and KW Hours. The table below meters shows the individual Voltage, Amps, Amp Hours, Watt Hours, & Data Transmissions for each of the sensors being monitored.

The graph below the table contains an interactive user interface which allows the user to select Volts, Amps, Watts, Watt Hours, or Amp Hours. The user also selects the power source as shown in this example above, Wind_turbine_1, Wind_turbine_2, Wind_turbine_3. The graph holds about 30 minutes of data. Click on the “LOG VIEWER” tab to see data older than 30 minutes.

Sensor Setup - Calibration and Loops Click on the “SETUP” and then “CHANGE SETUP” button to open the screen shown below:

PORT	Sensor Info	cal -offset	loops
0	Wind_Turbine_1	0.05	1
1	Wind_Turbine_2	0.05	1
2	Solar_Panel_3	0.05	1
0	PORT 1 __S/N_20100823032 __Firmware	0.00	1
0	PORT 1 __S/N_20100823032 __Firmware	0.00	1

Sometimes the *Wattsview*[™] hall effect current sensor will not read exactly zero when it should be reading zero. This is due to day to day variability and ambient temperatures. This is a common behavior of the honeywell CSLA current transducer sensor being used.

For example if your sensor puts out 0.1 Amps when no current is flowing, this will introduce a small error in your measurements. If the peak current being measured is only 5 Amps, the 0.1 offset would introduce a 2% ($0.1 / 5$) error into the measurement. To remove this error, or “ZERO” out your sensor, then go to setup screen and enter in -0.1 for that sensor and it will subtract out that offset.

This screen also allows the user to enter in the number of loops going through the sensor so that the current reading is accurate. For instance, if there is 5 loops then the software will divide the reading from the sensor by a factor of “5” to display the proper Amps value.

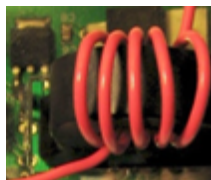
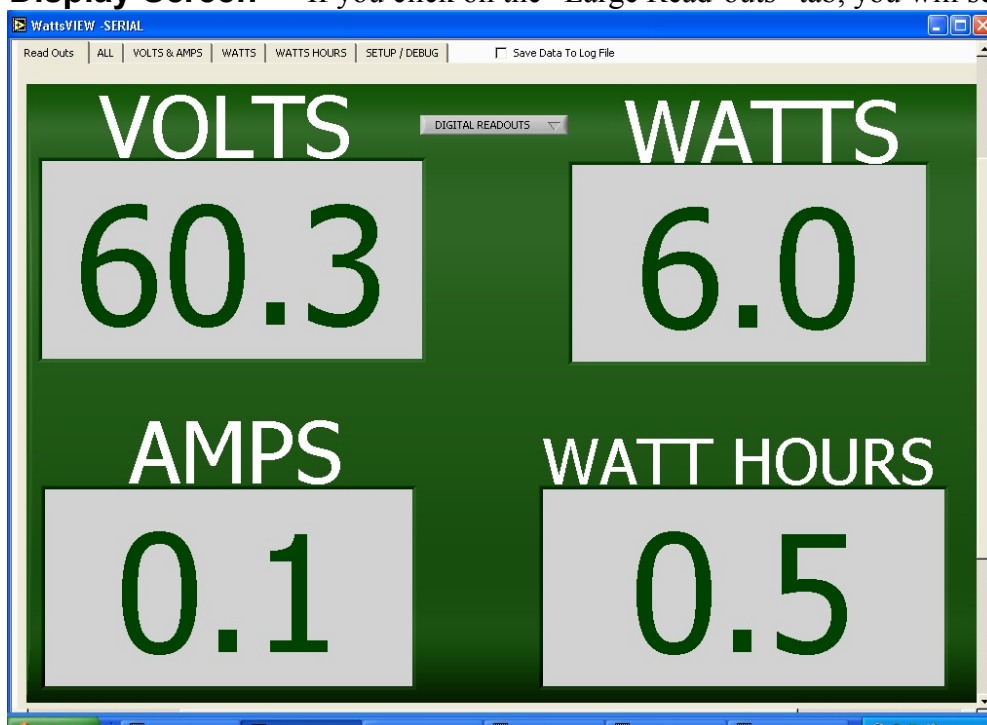


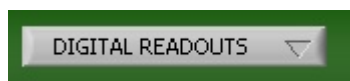
Figure 2 Example of looping wire through sensor

Large Display Screen

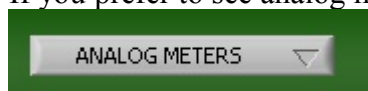
If you click on the “Large Read-outs” tab, you will see the screen shown



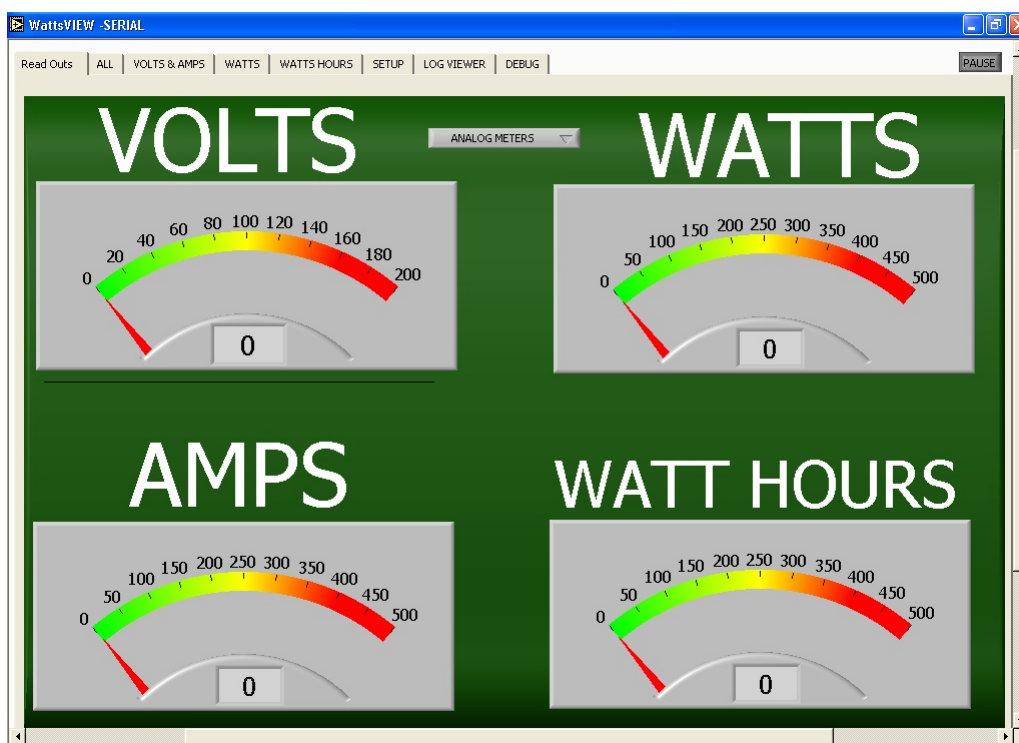
below.



If you prefer to see analog meters then you need to click on the button and select

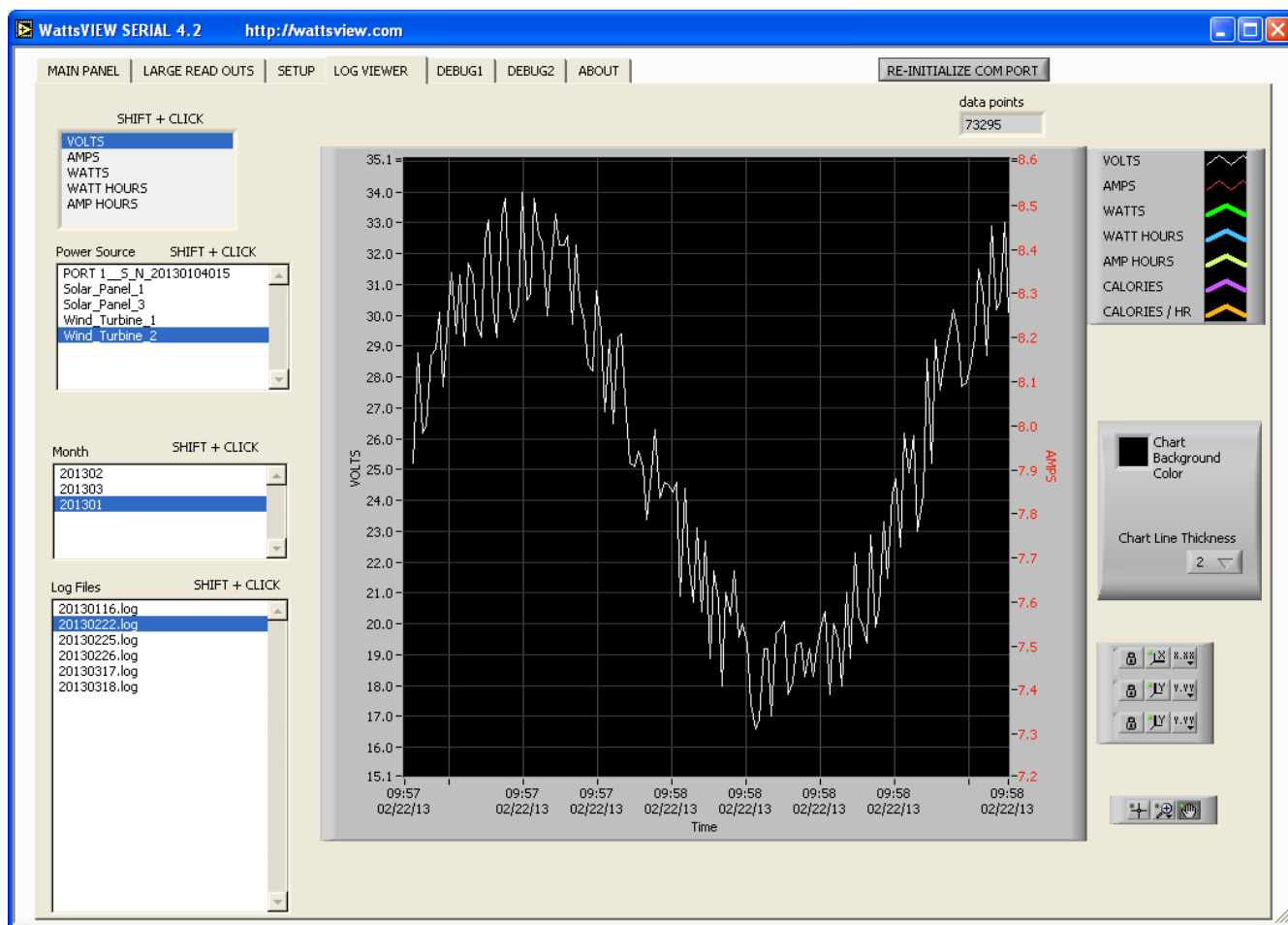


Then you will see the screen shown below.



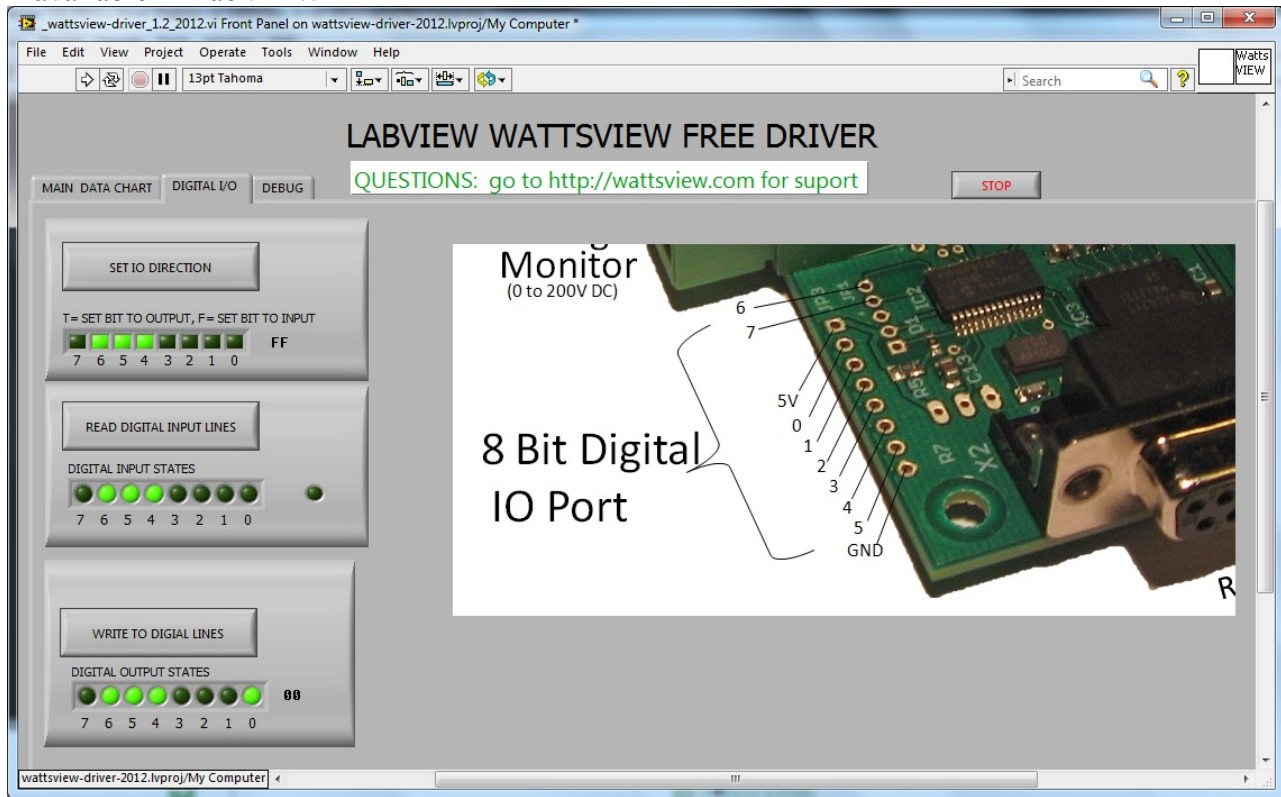
Log File Viewer

WattsVIEW™ records data to log files on your hard drive in tab delimited format. To view recorded data click on the tab titled “LOG VIEWER”. To look at the voltage being monitored click on the left hand side of the screen where it says “VOLTS”, click on the sensor you want to display data for. Click on the day you want to display data for in the bottom left hand box. For example a log file of “20130116.log” January 16th 2013. The date format is YYYYMMDD.



DIGITAL IO PORT

The WattsVIEW sensor has a 8 bit digital port which allows the user to control or monitor 8 digital TTL channels by sending a series of remote commands. These commands are available by request – contact support for more information. The digital lines can be used with a solid state relay to turn on high current sources such as an AC driven heater to control constant power. N Drivers to control and monitor these digital channels are available in LabVIEW



CUSTOM SOFTWARE FOR YOUR APPLICATION

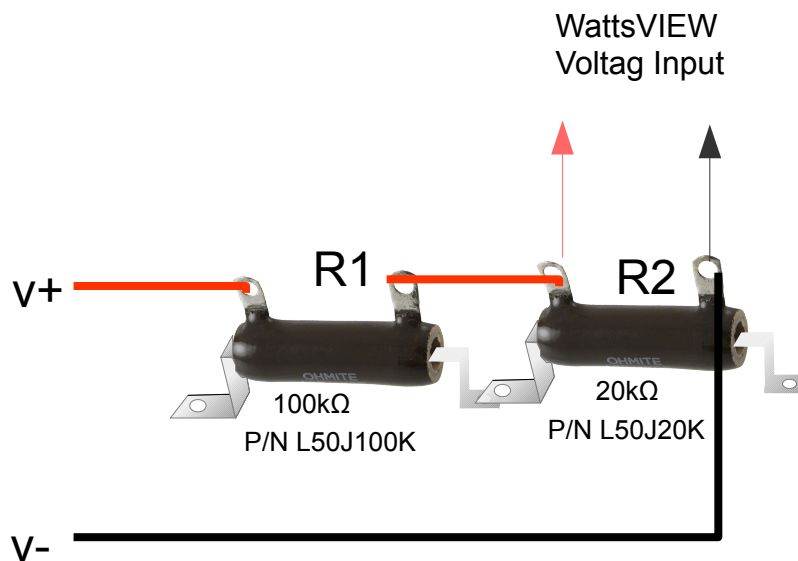
Electrical engineering and software engineering services are available for your project needs.

Any kind of software can be customized or written for your application. Please contact support for price and delivery time.

Voltage Scaling / Dividing

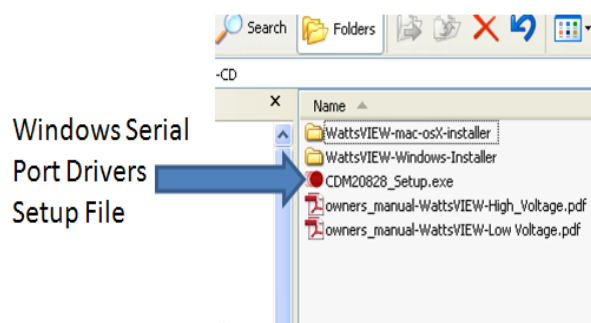
In some cases a max monitoring voltage of 200 Volts DC is not adequate. For this situation a voltage divider circuit can be used on the input of the *Wattsview*™ sensor. The resistors below are made by Ohmite and are rated for 1.6kV voltage isolation, 5 inches long. \$14 each. They can be mounted on a panel. This would divide a 1,000 Volt potential down to a 166 Volt potential which falls well within the range of the *Wattsview*™ sensor.

DISCLAIMER: Some alternative energy systems can exceed 1,000 Volts DC. Be aware this voltage can cause fire, damage to property, instant death or injury. By following these suggestions and connecting to power, you agree to have a licensed engineer or electrician inspect your installation.



APPENDIX A: Windows Installation

If you have the install disk then you can run the setup.exe driver install program shown below.



If you do not have the install disk then the driver installer can be found at this URL :

<HTTP://www.ftdichip.com/Drivers/VCP.htm>

Click this website (shown below). The windows download is a Setup.exe file which automatically installs when you double click on it.

Windows Serial Port Driver Installer - Download

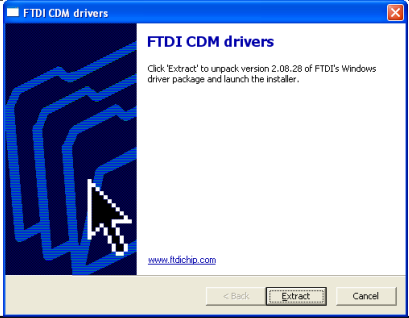
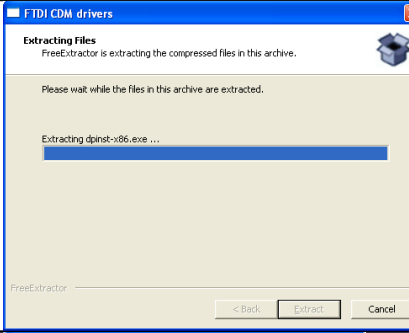
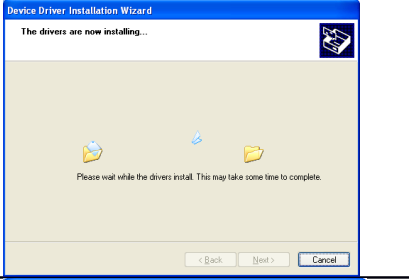
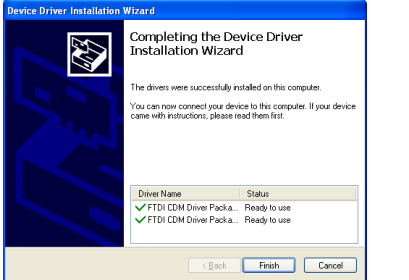
changes and subsequent runtime re-configuration as a result of making these changes.

Currently Supported VCP Drivers:

Operating System	Release Date	Processor Architecture							Comments
		x86 (32-bit)	x64 (64-bit)	PPC	ARM	MIPSII	MIPSIV	SH4	
Windows*	2013-02-20	2.08.28	2.08.28	-	-	-	-	-	2.08.28 WHQL Certified Available as setup executable Release Notes
Linux	2009-05-14	1.5.0	1.5.0	-	-	-	-	-	All FTDI devices now supported i Ubuntu 11.10, kernel 3.0.0-19 Refer to TN-101 if you need a cust VCP VID/PID in Linux
Mac OS X	2012-08-10	2.2.18	2.2.18	2.2.18	-	-	-	-	Refer to TN-105 if you need a cust VCP VID/PID in MAC OS
Windows CE 4.2-5.2**	2012-01-06	1.1.0.10	-	-	1.1.0.14	1.1.0.10	1.1.0.10	1.1.0.10	
Windows CE 6.0	2012-01-06	1.1.0.10	-	-	1.1.0.14	1.1.0.10	1.1.0.10	1.1.0.10	

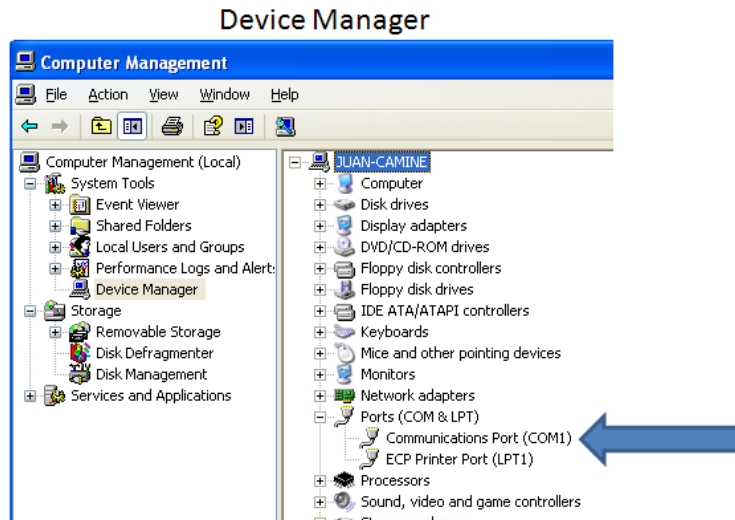
MAC Serial Port Driver Download

The process flow for the FTDI Windows Setup.exe installer is shown below

<p>This is the first screen that pops up. Click on the “Extract” button.</p>	
<p>Next allow the program to finish extracting.</p>	
<p>Click on the “Next” button</p>	
<p>Allow installation to finish.</p>	
<p>This screen should appear when finished. Click on the “Finish” button.</p>	

Verifying Successful serial COM port Installation

If you desire to double check that the serial port was setup correctly then access device manager and verify the port shows up as shown below. Note: If your port does not show up, then you need to reboot the computer and check again.



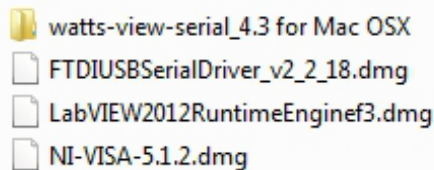
Get the latest version of *Wattsview*™ Copy the installation zip file from your install disk to your computer. Or download the latest version of the *Wattsview*™ program from the downloads web page at: <http://wattsview.com>

1. Unzip File Now unzip the file or extract the contents of the file to a temp folder on your hard drive.
2. Run the setup.exe file. Wait until the installation is completed
3. This portion of the procedure is completed.

APPENDIX B: MAC OS X Installation

If you do not have the installation disk then download the software from downloads page at <http://wattsview.com>

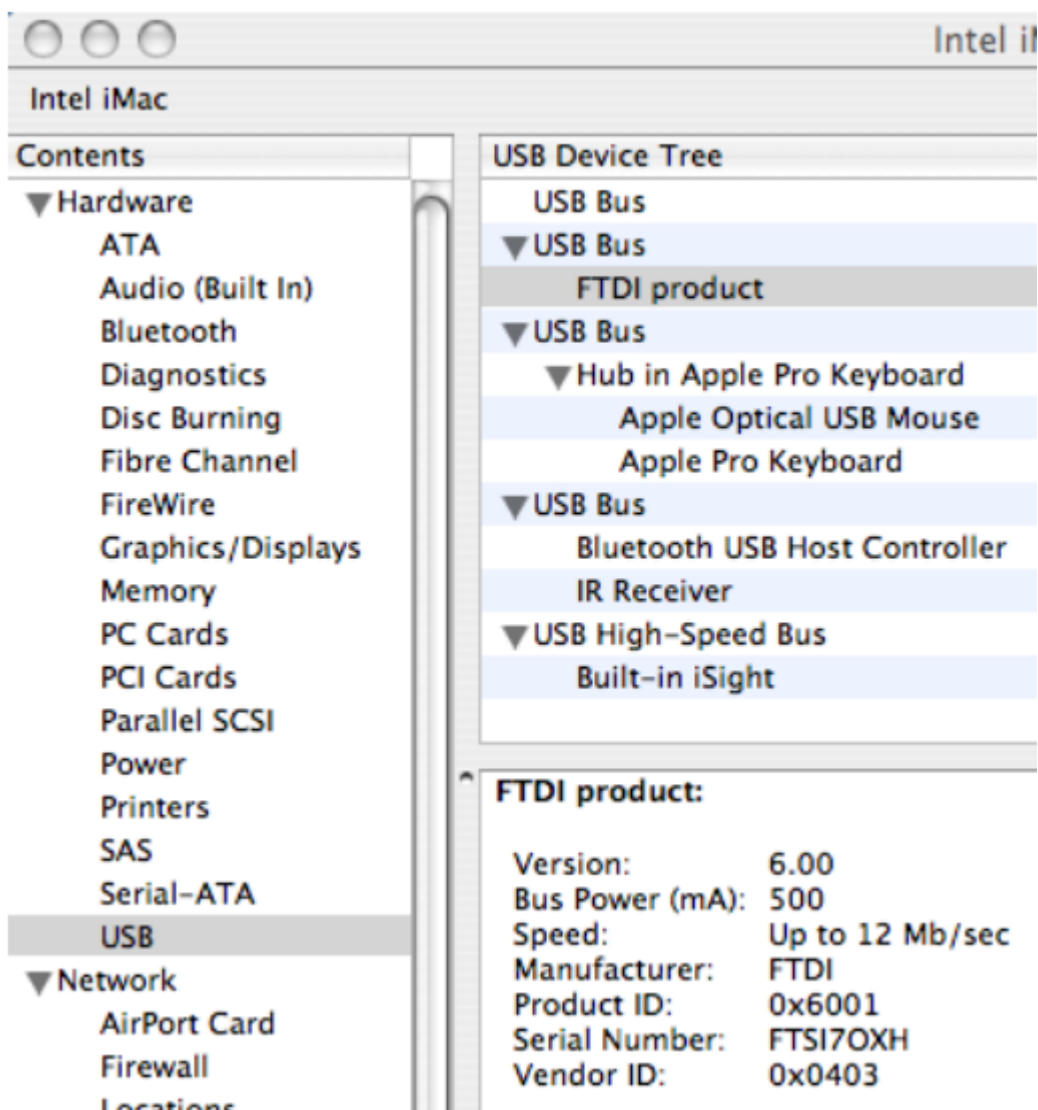
Place the contents of the zip file into the folder you want this application to reside from here on out. For example, you can leave it in the download area, or put it in the application folder. It should look something like this when you open the zip file:



MAC OS X Install files

Note: There are 3 .dmg files to install.

1. Click on and run the LabVIEW 2012 runtime engine .dmg file
2. When installer launches click on the LabVIEW runtime engine .pkg file and follow the promptsClick on and run the NI-VISA file, it may require you to reboot. These are low level serial port drivers written by National Instruments.
3. Click on and run the FTDI .dmg file which are drivers written by FTDI which will configure USB to serial adapter.
4. Follow the instructions in the user manual to setup the WattsVIEW sensor.
5. Connect your WattsVIEW sensor to the computer, verify that you have connected the 12 Volt power connector into the wattsVIEW sensor as shown in owner' manual.
6. Open the WattsVIEWtm folder
7. Launch the WattsViewtm APP file which will scan for devices and ports and display data.
8. Connect the sensor to your MAC computer by plugging one end of the USB cable to your MAC and the other end to the WattsVIEW sensor.
9. Wait 5 seconds, then Launch the System Profiler utility, or Apple System Profiler for earlier versions of OS X. This can be accessed by going to the Finder and selecting Applications from the Go menu, then open the
10. Utilities folder. Select USB under Hardware in the panel to the left and then select the appropriate device from the USB Device Tree. In the screen shot below (from OS 10.4), the device has a deviceID given by: Vendor ID: 0x0403 , Product ID: 0x6001 (See example below)
11. This ends this part of the installation, Refer now to the Launching WattsVIEW section of this manual.



APPENDIX C: User Manual Revision History

Revision 4.5 11/11/13 Updated MAC installation to include NI-VISA driver install

Revision 4.6 12/3/14 Updated photos, minor changes to content.

Hardware Accessories

RECOMMENDED SERIAL CABLE

This cable can be used with the
WattsVIEW serial DB 9pin model

[DB 9 Pin Male To Female Straight
Through](#)



RECOMMENDED POWER SUPPLY

This cable can be used with the
WattsVIEW serial DB 9pin model.

120V to 220 V AC 50/60 Hz

[Sold here online](#)



TECHNICAL SALES & SUPPORT

PHONE: 480-489-4111

EMAIL: support@wattsview.com