



WIRELESS HEADPHONES

PBT98 | USER MANUAL



Questions?
Need some help?
This manual will help you
enjoy your new product



If you still have questions,
call our help line:
1-877-768-8481



or visit us at:
www.southern telecom.com
Click on "Product Support"

Recycling symbol text: Please do not dispose of this product in the trash. It contains electronic waste which can be harmful to the environment. Recycle it properly. See the instructions for more information on recycling electronic waste.

IN THE BOX



Bluetooth Wireless Headphones



User Manual

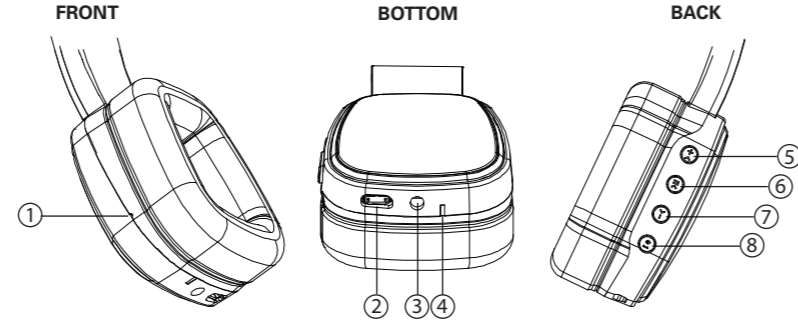


Micro USB Charging Cable



3.5mm Auxiliary Cable

LOCATION OF CONTROLS

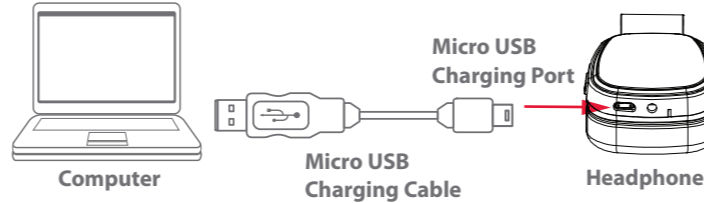


1. Microphone
2. Micro USB charging port
3. Auxiliary jack
4. LED indicator light
5. [>+] button:
- Long press - increase volume
 - Quick press - skip to previous song

6. [>||] button: Play/pause
7. [-<] button:
- Long press - decrease volume
 - Quick press - skip to next song
8. [()] button:
- Long press - power ON/OFF
 - Quick press - answer/end call
 - Double press - dial/reject call

CHARGING THE HEADPHONES

1. Plug the small end of the Micro USB charging cable into the Micro USB charging port on the headphones.
2. Plug the large end of the Micro USB charging cable into a USB port on your computer or other USB charging device.
3. The LED indicator light is RED when charging. It will shut off when the headphones are fully charged.



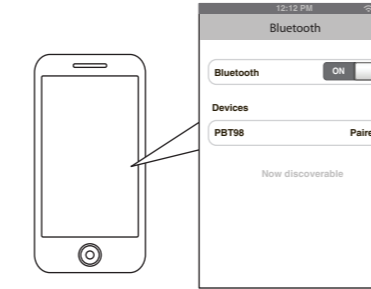
! Make sure you charge the headphones for at least 3 to 4 hours before using them for the first time.

PAIRING THE HEADPHONES

1. Press and HOLD the [()] button until the LED indicator light quickly flashes BLUE.
2. The headphones are now in pairing mode and ready to be connected to your device.
3. Keep the headphones and Bluetooth enabled device within 3 feet of each other during the pairing process.
4. Set your Bluetooth enabled device to search for Bluetooth devices.

! If there are no paired devices in range when the headphones are turned on, it will go into pairing mode automatically. To reconnect, enter your device's Bluetooth settings and select PBT98.

- On an iPhone**
- Go to SETTINGS > BLUETOOTH (Make sure Bluetooth is turned ON)



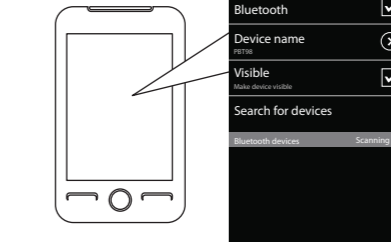
PAIRING THE HEADPHONES (cont'd)

- On a Blackberry**
- Go to SETTINGS/OPTIONS > BLUETOOTH
 - Enable BLUETOOTH



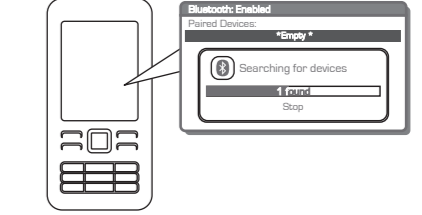
On an Android Phone

- Go to SETTINGS > BLUETOOTH > MENU > Search for devices (Make sure Bluetooth is turned ON)



PAIRING THE HEADPHONES (cont'd)

- On other Cell Phones/Devices**
- Review the instruction manual that came with your phone/device.



5. When the Bluetooth-enabled device finds the headphones, select "PBT98" from the list of found devices.
6. If required, enter the password 0000. Select OK or Yes to pair the two units.
7. After a successful registration, the LED Bluetooth indicator light will slowly blink BLUE.

NOTE: If you would like to connect the headphones to another device, you must unpair the headphones from the currently paired device first. In your device's Bluetooth settings, select "PBT98", then select "unpair". When the headphones have been unpaired, it automatically goes into pairing mode again.

! The screenshots above are typical of many Bluetooth enabled devices in the market today, and are used to assist in the explanation of the pairing process. Your Bluetooth enabled device's interface and interaction with the Bluetooth headphones may slightly differ from the illustrations above.

USING THE HEADPHONES

Powering ON/OFF

- To turn ON, long press the [()] button on the headphones until the LED indicator flashes BLUE.
- To turn OFF, long press the [()] button again until the LED indicator turns off.
- Check that the Bluetooth features on your device are turned ON.
- If you are using the headphones for the first time, go to the "PAIRING THE HEADPHONES" section of this User Manual, and pair the headphones to your desired Bluetooth device.

Answering/ending calls

- Quick press the [()] button to answer an incoming call.
- Quick press the [()] button again to end the call.

Rejecting a call

To reject an incoming call, double press the [()] button.

Dialing last number called

To dial the last number called, double press the [()] button when in standby mode.

PLAYING MUSIC

To enjoy wireless music on your Bluetooth headphones, make sure you are connected to a Bluetooth enabled device. Once connected press PLAY on your Bluetooth device. When playback starts, control the music and volume with your connected device or the buttons on the headphones.

Play/Pause

- Quick press the [>||] button to pause the music.
- To resume music playback, quick press the [>||] button again.

Skipping Songs

- Quick press the [>+] button to go to the previous song.
- Quick press the [-<] button to go to the next song.

Adjusting the volume

- Long press the [>+] button to raise the volume.
- Long press the [-<] button to lower the volume.

USING AS WIRED HEADPHONES

1. Turn the headphones ON.
2. Connect one end of the included 3.5mm auxiliary cable to the aux jack on the headphones and the other end to an external device's headphone jack (smartphone, tablet, or MP3 player).
3. Open a media player on your device and click on PLAY to start playing your music.
4. Use the controls on your connected device to control music playback and volume.

! Connecting the audio cable will override Bluetooth mode. When the cable is disconnected, the headphones will automatically reconnect to the last paired device.

TROUBLESHOOTING

? I can pair the Bluetooth headphones with my Bluetooth device, but I cannot hear any music.

1. Make sure your Bluetooth device supports A2DP profile.
2. Turn up the volume on your Bluetooth device.
3. You may have to unpair the headphones, then re-pair to your device.

? My Bluetooth device is not able to pair with the Bluetooth headphones.

1. Make sure the Bluetooth headphones are turned OFF before starting the pairing process.
2. Keep your Bluetooth headphones and Bluetooth-enabled device within 3 feet of each other during the pairing process.
3. Press and HOLD the [()] button until the LED indicator light quickly flashes BLUE.
4. Check that YOUR device's Bluetooth feature is turned ON.
5. Try repeating the pairing process. See "Pairing the headphones."
6. Make sure the headphones are fully charged.

TROUBLESHOOTING (cont'd)

? I cannot get the Bluetooth headphones into pairing mode.

1. Make sure the Bluetooth headphones are turned OFF before starting the pairing process.
2. Press and HOLD the [()] button until you hear a tone and the LED indicator light flashes BLUE and RED alternately.
3. The headphones are now in pairing mode.

WARRANTY

This product as supplied and distributed new by AIT, Inc. ("AIT") to the original consumer purchaser is warranted by AIT against defects in material and workmanship for a period of one year from your date of purchase ("Warranty"). In the unlikely event that this product is defective, or does not perform properly, you may within one year from your original date of purchase return it to the authorized service center for repair or exchange.

TO OBTAIN WARRANTY SERVICE:

- Provide proof of the date of purchase within the package (Dated bill of sale).
- Prepay all shipping costs to the authorized service center, and remember to insure your return.
- Include a return shipping address (no P.O. Boxes), a telephone contact number, and the defective unit within the package.
- Describe the defect or reason you are returning the product.

Your product will be repaired or replaced, at our option, for the same or similar model of equal value if examination by the service center determines this product is defective. Products received damaged as a result of shipping, will require you to file a claim with the carrier.

The shipping address of the authorized service center is:

AIT, Inc.
ATTN: Customer Service (2nd Floor)
14-C 53rd Street
Brooklyn, NY 11232

IN NO EVENT WILL AIT, ITS MANUFACTURERS, DISTRIBUTORS OR PLP, IP HOLDINGS, LLC BE LIABLE FOR ANY INCIDENTAL, DIRECT, INDIRECT, SPECIAL, PUNITIVE OR CONSEQUENTIAL DAMAGES (SUCH AS, BUT NOT LIMITED TO, DAMAGES FOR LOSS OF PROFITS, BUSINESS, SAVINGS, DATA OR RECORDS) RELATED TO THIS PRODUCT, EXCEPT AS STATED HEREIN. NO OTHER WARRANTIES SHALL APPLY.



Questions?
Need some help?
This manual will help you
enjoy your new product



If you still have questions,
call our help line:
1-877-768-8481



or visit us at:
www.southern telecom.com
Click on "Product Support"