

**Learning
Highways**



**Pathways
Suite**

Pathways Suite Software

**Learning
Highways**



33A Church Street, Denby Village, Ripley, Derbyshire DE5 8PA
Telephone **0844 4842828** • Fax **0844 4848752** • E-mail **sales@learnhigh.com** • <http://www.learnhigh.com>

MANUAL CONTENTS SECTIONS

INSTALLATION INSTRUCTIONS.....	section 1
ADMINISTRATOR'S MANUAL	section 2
A+DVANCED LEARNING SYSTEM® USER'S MANUAL	
TEACHER'S MANUAL	section 3
A+LS® OVERVIEW	section 4
STUDENT ASSESSMENT AND TESTING PROGRAM	section 5
A+LS® LESSONS	section 6

TEACHER RESOURCES & ALIGNMENT CHARTS ARE AVAILABLE ON THE
INSTALLATION CD IN THE \ALS\RESOURCES DIRECTORY.

Pathways Suite Installation Instructions

WINDOWS®

Information in this document is subject to change without notice and does not represent a commitment on the part of The American Education Corporation or Learning Highways Limited. The software described in this document is furnished under a license or nondisclosure agreement. The software may be used and copied only in accordance with the terms of the agreement. It is a violation of copyright law to copy the software on any medium, or to use the software, except as specifically allowed in the license or nondisclosure agreement. No part of this manual may be reproduced or transmitted in any form or by any means for any purpose other than the purchaser's personal use, without the express written consent of The American Education Corporation or Learning Highways Limited.

Copyright © 2000 The American Education Corporation. All Rights Reserved. Printed in the United States of America and England.

A+ and A+dvanced Learning System are registered trademarks of The American Education Corporation. Advanced Learning System, A+LS and A+NET are trademarks of The American Education Corporation. Learning Highways Limited is a distributor for The American Education Corporation.

Microsoft and Windows are registered trademarks of Microsoft Corporation. NetWare is a registered trademark of Novell, Inc. Acrobat and Acrobat Reader are registered trademarks of Adobe Systems, Inc.



Learning Highways Limited
33A Church Street, Denby Village, Ripley, Derbyshire DE5 8PA
Telephone **0844 4842828** • Fax **0844 4848752** • E-mail **sales@learnhigh.com** • **<http://www.learnhigh.com>**

Document Number: ALSWIN003-0798—LH INSTALL01

TABLE OF CONTENTS

GENERAL INFORMATION

YOUR A+LS® CDs	6
HARDWARE & SOFTWARE REQUIREMENTS	6
TECHNICAL SUPPORT.....	7

INSTALLING A+LS

BEFORE STARTING THE INSTALLATION	8
INSTALLATION TYPES.....	8
STARTING THE INSTALLATION—COMMON STEPS	8
INSTALLING LICENSED TITLES	9
IMPORTANT NOTES FOR NETWORK USERS	10
INSTALLING ON NETWORK WORKSTATIONS	10

GENERAL INFORMATION

Your Pathways Suite CDs

An installation of **Pathways Suite of products** are shipped to you on CDs. Each subject is on a different CD.

IF YOU ARE DOING AN INSTALLATION THAT INCLUDES CURRICULUM TITLES FROM DIFFERENT CDS, YOU WILL NEED TO RUN THROUGH THE STEPS IN THE 'INSTALLING A+LS' SECTION FOR EACH CURRICULUM TITLE, USING A DIFFERENT CD EACH TIME

Hardware & Software Requirements

Network Workstation or Standalone machine:

- 1) IBM-compatible machine with an 80486 processor or higher.
- 2) MS-DOS 6.22 or higher, Microsoft Windows 3.11 or higher, Microsoft Windows 95 Service Pack 1 or higher, Windows ME, Microsoft Windows NT 3.51 Service Pack 5 or higher, Microsoft Windows NT 4.0 Service Pack 2 or higher, Microsoft Windows 2000, Microsoft Windows XP.
- 3) Minimum 8 Megabytes (16 recommended) of RAM for MS Windows 3.11 and MS Windows 95; minimum 16 megabytes (32 recommended) RAM for MS Windows NT, Windows 98 & Windows ME; minimum 64 megabytes (128 recommended) RAM for MS Windows 2000 & Windows XP.
- 4) Access to a CD-ROM drive.
- 5) A Microsoft Windows-compatible mouse or other pointing device.
- 6) A Microsoft Windows-compatible sound card and speakers or headphones (headphones recommended).

GENERAL INFORMATION (continued)

Network Server

- 1) Microsoft Windows NT Server 3.51 Service Pack 5 or higher, Microsoft Windows NT Server 4.0 Service Pack 2 or higher, Novell NetWare 3.12 Support Pack 1 or higher, Novell NetWare 4.11, Microsoft Windows or higher.
- 2) Hardware and software that the Network Operating System listed above requires.
- 3) Hard disk space required is dependent upon the A+LS® titles selected for installation.

Technical Support

Before you call technical support:

- 1) Please read through the documentation thoroughly.
- 2) Refer to the file called "Readme," if there is one, on the CD for last minute changes to the software or documentation.
- 3) Please verify that the network is operating correctly and that all machines and software conform to the A+LS hardware & software requirements listed on page 1.
- 4) Please have your product name, version number, serial number, titles installed, and system(s) configuration information available.

How to reach technical support:

By Telephone:	0844 4842828 Monday to Friday 9am—5pm
By Fax:	0844 4848752
By E-mail:	support@learnhigh.com
By Mail:	Learning Highways Limited 33A Church Street Denby Village Ripley Derbyshire DE5 8PA

INSTALLING A+LS®

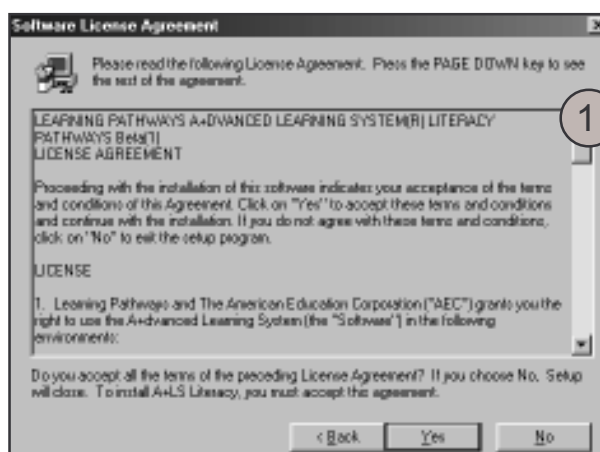
Before Starting the Installation

- 1) Please check each machine to be sure that the network (if applicable), video, sound, and mouse are operating properly. If any of these are not functioning properly call your vendors' support line.
- 2) Ensure you have the following:
 - a) one or more **A+LS** CDs;
 - b) the Registration Information Sheet, which includes your Registration Name, CD Key, Title Key and passwords.
- c) Administrator access on the server (if a network installation).
- 3) **If you are upgrading from prior versions of A+LS**, the installer will overwrite any global lessons authored by System Administrator. Lessons authored by users logged on as a teacher will be unaffected. If System Administrator has authored global lessons on your installation of **A+LS**, call Learning Highways Technical Support to discuss procedures for preserving your authored lessons before installing v2.15.

Starting the Installation—Common Steps

If you are installing **A+LS** to a network server, perform the installation **from** a workstation, not from the server itself.

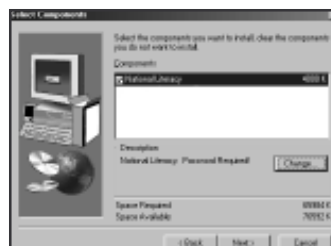
- 1) Insert the CD into the CD-ROM drive. If your machine is set up for CD autoplay, the setup program will launch automatically. If your machine is not set up for CD autoplay:
 - click on the File Menu (Windows 3.11) or Start Menu;
 - click on the Run command; then,
 - in the 'Run' dialogue, type X:\SETUP, where X is the drive letter for the CD drive (i.e. type D:\SETUP if the CD drive is the D drive).
- 2) After reading the welcome screen, click on 'Next >' to begin the installation.
- 3) Read the License Agreement (1). If you agree with all of its terms click on 'Yes' to continue the installation.



INSTALLING A+LS® (continued)

Installing Licenced Titles

- 1) You will be asked to choose the location where you want to install **A+LS**. Click on 'Next >' to accept the default path, or click on 'Browse' to identify the location using a standard file browse dialogue box. You can click on 'Network...' on this file browse dialogue to identify a network drive. Click on 'Next >' when you are finished.



- 2) You can now choose the lesson/titles to be installed. When happy with selection, click next to progress.



- 3) Now appears a warning screen... stating that the lessons you are about to install are password protected, click next to continue.



- 5) After the files have finished copying, ALS may require to be registered (if installed as a stand alone product). If installing to an existing installation then this won't apply. Fill in details from the registration sheet.



- 6) When all of the files have been copied, you may be asked if you want to install Adobe Acrobat® Reader, which is required to view the teacher resource.

INSTALLING A+LS® (continued)

Important Notes for Network Users

After you have completed the server installation, your network rights must be properly set. Make sure the settings are as follows:

For users of Novell NetWare™—All users must have Read, Write, Create, Modify, Erase, and File Scan rights to the **A+LS** folder on the server.

For users of Windows NT™—All users must have 'R', 'X', 'W', and 'D' rights to the **A+LS** folder on the server.

Make sure these network rights are properly set **before** calling for technical support.

FAILURE TO PROPERLY ESTABLISH NETWORK RIGHTS PRIOR TO RUNNING **A+LS** CAN CAUSE IMPROPER OPERATION EVEN IF PROPER NETWORK RIGHTS ARE SUBSEQUENTLY ESTABLISHED.

FAILURE TO PROPERLY ESTABLISH NETWORK RIGHTS VOIDS YOUR WARRANTY

Installing on Network Workstations

In order to run **A+LS**, every workstation from which **A+LS** is run must have certain files installed. These include special fonts, Adobe Acrobat™ Reader (to view On-Line Manuals from the workstation), and the QuickTime™ Viewer (to run **A+LS MediaWeaver** titles from the workstation). To ensure that these files are installed, perform the following steps from each workstation:

- 1) Log on to the network from the workstation. (You must have full access rights on the workstation.)
- 2) Click on the File Menu (Windows 3.11) or Start Menu.
- 3) Click on the Run command.
- 4) In the Run dialogue, type `XXX\NETSETUP\NETSETUP.EXE`, where `XXX` is the path you identified in step #1 on page 5. For example, if you installed **A+LS** to `G:\ALS`, the program you should run is `G:\ALS\NETSETUP\NETSETUP.EXE`. You may also double-click on `NETSETUP` from File Manager or Windows Explorer.
- 5) Click on 'Continue' to complete the workstation installation.