

Time. So intangible, yet so much a part of our every day world. A leading actor without a persona. A constant role in our daily conversations. Ever aware that time is fleeting, we try to capture it by giving it a face. The face of a Rodania watch.

Our Swiss roots and love for tradition have always helped us to make timepieces that embody our passion for style and precision. Backed by 80 years of craftsmanship, we concentrate on making fine watches, in line with a contemporary classy style. We stand up to our highest standard of quality, making you feel great, at ease and comfortable.

Thank you very much for purchasing a Rodania watch.

Enjoy each moment, meticulously measured by Rodania, and fully live the time of your life !

Mr Didier Bennert
CEO Montebli Group

In order to enjoy all of its features, please, read the instructions carefully. Make sure that the Rodania International Guarantee section is filled in properly at the time of purchase, enabling you to claim warranty service, should the need arise. (Warranty limited as specified in the Guarantee section).

INTERNATIONAL WARRANTY

Your Rodania watch is guaranteed against all manufacturing defects for a period of 2 years from the date of its original purchase. During the guarantee period the repair will be free of charge for labour and parts, if the technical service accepts the defective part to be a result of a manufacturing fault. This guarantee will be granted only, when the guarantee section, duly stamped by the retailer and completed with the date of purchase and reference number of the watch, can be presented with the defective watch. None of these data may be altered, deleted, removed or made illegible. The free-of-charge guarantee service can be refused if the warranty information in this booklet is incomplete or illegible.

This guarantee does not cover:

- Damage to the crystal, winder, crown, pushers, battery, push-pins or watch band;
- Requests for replacement or reimbursement;
- Damage being a consequence of normal wear and tear or caused by mishandling, accidents or misuse due to non respect of instructions for use and maintenance;
- Cost of transport and all risks of transport related directly or indirectly to the guarantee of the product;
- Repairs done and batteries replaced by a non professional watchmaker or not authorised technical service or done by the customer himself;
- Damage or defect due to water infiltration after repair, if no water resistance test was performed after a battery replacement or repair;
- Any damage caused by inappropriate use, such as sharp knocks, extreme heat, cold or magnetic fields.

HANDLING RECOMMENDATION

General watch maintenance

Like any object, your watch is negatively affected by dust, perfume, perspiration, pool and sea water. Salt crystals from the skin could attack the metal of the case and the band, the crown and leather strap. We recommend that you clean your watch with a slightly damp, soft cloth. The metal and the gold plating will retain their original colour and lustre longer.

Metal bands on watches with a minimum water resistance of 5 atm can be washed with cold water and a mild soap. Make sure that the crown is pushed into place, and that the crystal is in good condition before making any contact with water. Never use hot water. Have a professional watch-repair service replace the battery. A professional watch maker knows how to check the gaskets and how to replace them, if necessary. Always explicitly ask to check the water resistance, to make sure your watch remains water resistant and to keep the warranty after a battery replacement or repair.

Ceramic watches

Rodania watches in the mystery collection are made out of zirconium oxide ceramic. This high grade ceramic offers an extraordinary resistance to scratches and surface damage. Furthermore, this lightweight material is chemically inert, which creates comfort and avoids potential allergic reactions.

Importantly, however, the ceramic case or bracelet may break in case of a severe shock. Such damage is not covered by the warranty. Therefore, please make sure that your watch does not hit or fall down on a hard surface. We recommend that you do not wear your watch when performing hard physical work or sports.

In order to keep the bracelet flexible and shiny, wipe it regularly with a damp soft cloth. Take good care of your Rodania ceramic watch and it will stay a beauty for many years to come.

Mechanical watch maintenance

An automatic watch is designed to never need a battery, thanks to its winding mechanism. The mechanism works because of the motion of the human wrist, and it is the perfect choice for those who wear their watch every day.

However, we recommend that you bring your mechanical watch for service every 3 or 4 years (preferably once a year if the watch is water-resistant and heavily used).

Moreover, if you do not wear your automatic watch every day, it is advisable to try and wind it at least twice a week. This will ensure that the inside mechanism is in complete running order.

Water resistance

The most important reason of non-functioning of the watch is the effect of water or humidity. Therefore we advise to regularly have a look at your watch to see if all parts necessary to keep the water out are still in good working condition: crown, pushers, crystal. When damage or defects in one of these parts is detected, avoid all contact with water. You will find the degree of water resistance engraved in the case back. This degree does not mean literally that you can submerge your watch up to this depth. It indicates a standard fabrication norm, that guarantees that your watch has been tested to withstand an atmospheric pressure, proving that all elements and gaskets are well in place and efficient. The water resistance will last in time, depending on the use of the watch.

If any part, necessary to keep water and humidity out of your watch is deficient, missing or broken the mechanism of your watch might be affected, disturbed or blocked. We advise a water resistance test every year, best before the bathing season.

Never use the pushers of a chronograph while being under water !


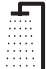



Important: After each operation, you must always push the crown back down to ensure that your watch remains water-resistant.



Remark

Return your quartz watch at the end of its service life to the available recycling systems.

The scheme below shows the correct interpretation of the different case back inscriptions on your watch.

Case back engraving					
3 ATM	✓	—	—	—	—
5 ATM	✓	✓	✓	—	—
10 ATM	✓	✓	✓	✓	—
20 ATM	✓	✓	✓	✓	✓

Case back engraving:

- **3 ATM: the watch resists to accidental contact with water and normal perspiration.**
It means no immersion in water, neither for swimming nor aquatic sports.
- **WATER RESISTANT 5 ATM:** this watch resists to occasional immersion.
An annual control of the sealing gaskets is necessary.
- **WATER RESISTANT 10 ATM:** the watch is suited for all aquatic sports, except diving.
An annual control of the sealing gaskets is necessary.
- **WATER RESISTANT 20 ATM:** the screwed crown, the thickness of the crystal and packings have been especially designed to withstand pressure of 20 atm. Make sure that the crown is entirely screwed, before you go into the water.
An annual control of the sealing gaskets is necessary.

INSTRUCTIONS FOR QUARTZ WATCHES

RONDA CAL. 5030.D

Battery type: 395 (ø 9.5 mm x 2.6 mm / SR 927 SW)

Accuracy: +20 / -10 seconds per month

DESCRIPTION OF THE DISPLAY AND CONTROL BUTTONS

DISPLAY ELEMENTS

MINUTE HAND

CENTRE STOP-SECOND

HOUR HAND

MINUTE COUNTER

HOUR COUNTER

SECOND HAND

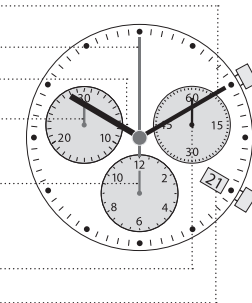
DATE

CONTROL BUTTONS

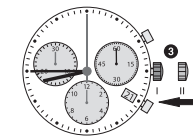
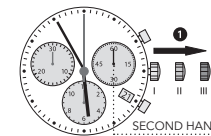
PUSH BUTTON A

CROWN

PUSH BUTTON B



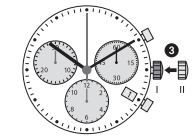
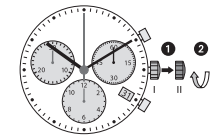
SETTING THE TIME



- * Pull out the crown to position III (the watch stops).
- Turn the crown until you reach the correct time **08:45**.
- * Push the crown back into position I.

Please note: * in order to set the time to the exact second ①, must be pulled out when the second hand is in position "60" (0). Once the hour and minute hands have been set, ③ must be pushed back into position I at the exact second.

SETTING THE DATE (QUICK MODE)



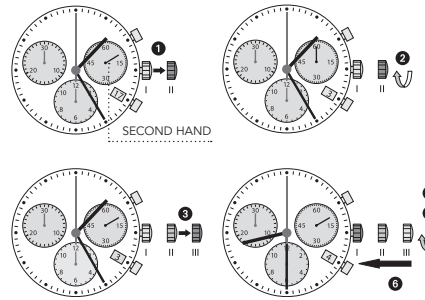
- Pull out the crown to position II (the watch continues to run).
- Turn the crown until the correct date **1** appears.
- * Push the crown back into position I.

Please note: During the date changing phase between 9 PM and 12 PM; the date must be set to the date of the following day.

RONDA CAL. 5030.D (continue)

SETTING THE DATE/TIME FOLLOWING A BATTERY CHANGE

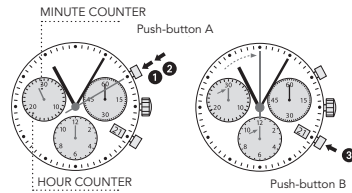
Example: Date/time on the watch: 17 / 01:25
Present date/time: 4 / 20:30



- 1 Pull out the crown to position II (the watch continues to run).
- 2 Turn the crown until yesterday's date appears 3.
- 3 Pull out the crown to position III (the watch stops).
- 4 Turn the crown until the correct date 4 appears.
- 5** Continue to turn the crown until the correct time 8:30 PM appears.
- 6 Push the crown back into position I.

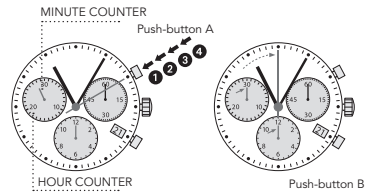
Please note: * To set your watch to the exact second, please refer to the chapter entitled "setting the time".
** Please, observe the AM/PM clock rhythm.

CHRONOGRAPH: BASIC FUNCTION (Start / Stop / Reset)



- Example:
- 1 **Start:** Press push-button A.
 - 2 **Stop:** To stop the timing, press push-button A once more and read the three chronograph hands: 1h/20min/10sec
 - 3 **Zero positioning:** Press push-button B. (The three chronograph hands will be reset to their zero positions.)

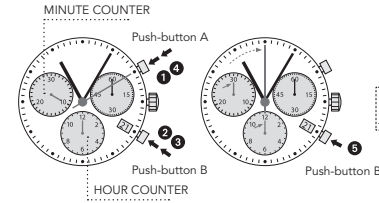
CHRONOGRAPH: ACCUMULATED TIMING



- Example:
- 1 **Start:** (Start timing.)
 - 2 **Stop:** (E.g. 15min 5sec following 1)
 - 3 **Restart:** (Timing is resumed.)
 - 4 **Stop:** (E.g. 13min 5sec following 3)
= 28min 10sec
(The accumulated measured time is shown.)
 - 5 **Reset:** The three chronograph hands are returned to their zero positions.

Please note: * Following 4, the accumulation of the timing can be continued by pressing push-button A. (Restart/Stop, Restart/Stop,...)

CHRONOGRAPH: INTERMEDIATE OR INTERVAL TIMING

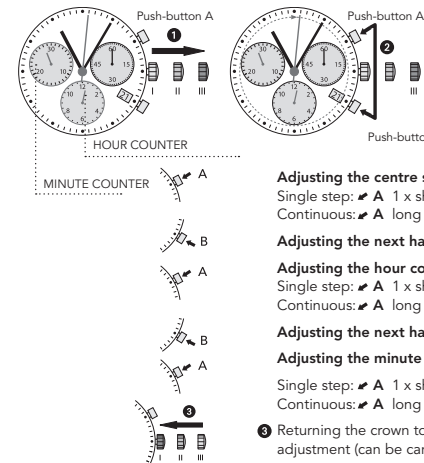


- Example:
- 1 **Start:** (Start timing.)
 - 2 **Display interval:** E.g. 10min 10sec (Timing continues in the background.)
 - 3 **Making the measured time:** (The 3 chronograph hands are quickly advanced to the ongoing measured time.)
 - 4 **Stop:** (Final time is displayed.)
 - 5 **Reset:** The 3 chronograph hands are returned to their zero position.

Please note: * Following 3, further intervals or intermediates can be displayed by pressing push-button B. (Display interval, make up measured time, ...)

ADJUSTING THE CHRONOGRAPH HANDS TO ZERO POSITION

Example: One or several chronograph hands are not in their correct zero positions and have to be adjusted (e.g. following a battery change)



- 1 Pull out the crown to position III. (all 3 chronograph hands are in their correct or incorrect zero position.)
- 2 Keep push-buttons A and B depressed **simultaneously** for at least 2 seconds. (The centre stop-second rotates by 360° corrective mode is activated.)

Adjusting the centre stop-second

Single step: A 1 x short
Continuous: A long

Adjusting the next hand B

Adjusting the hour counter hand (pos. 6h)

Single step: A 1 x short
Continuous: A long

Adjusting the next hand B

Adjusting the minute counter hand (pos. 9h)

Single step: A 1 x short
Continuous: A long

- 3 Returning the crown to position I. Termination of the chronograph hands adjustment (can be carried out at any time).