



## AUTOMATIC KEEP WARM RICE COOKER USER MANUAL



Model: TRC-10UDW

### **Tatung Co. of America, Inc.**

2850 El Presidio Street  
Long Beach, CA 90810, U.S.A.

Tel: (310)637-2105

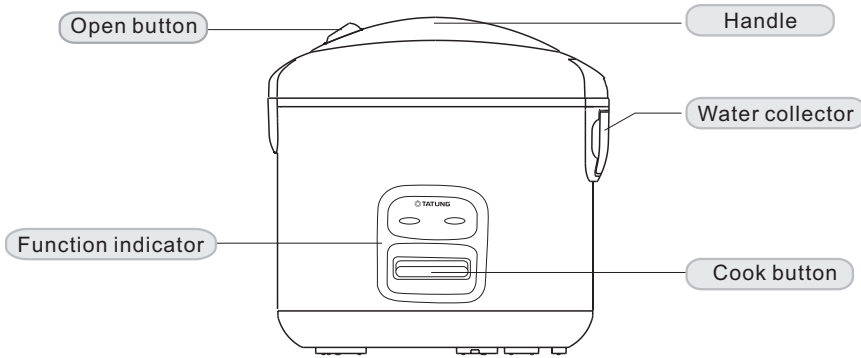
Fax: (310)632-3588

[www.tatungusa.com](http://www.tatungusa.com)



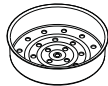

Thank you for purchasing this product. Please read user manual carefully before using and keep it for future reference.

# Product Introduction

The Tatung automatic electric rice cooker is designed that the cooking button can not be pressed down if the inner pot is not placed properly. It will automatically keep warm when the power cord is not unplugged.

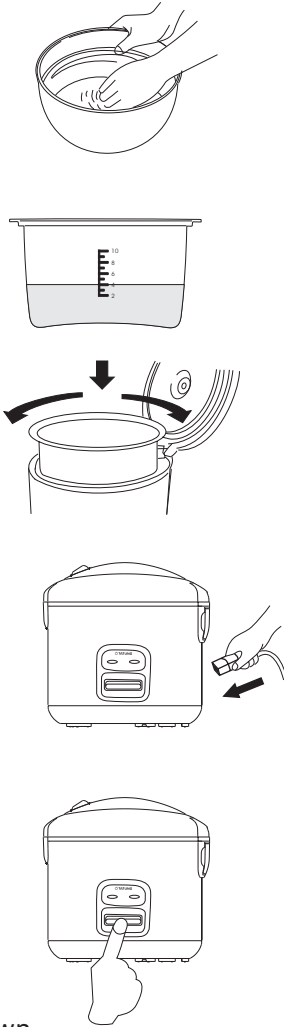


Note: The picture is subject to real object

Model	TRC-10UDW		
Rated voltage	120V~60Hz		
Rated power(W)	700		
Dimension	12"X12"X12.4"		
Weight	8.82 lbs		
Inner capacity(L)	1.8		
Rice cup capacity(cup)	1-10		
Accessories			
			
Spatula	Measuring cup	Steaming tray	Power cord

## Operation

1. Measure rice with measuring cup into a container then wash rice in the container.
2. Pour washed clean rice into rice cooker inner pot, and add water to appropriate level.
  - ▶ Ex: To cook 4 cups of rice, need to pour water up to level 4 for rice.
  - ▶ The water volume can be added or reduced according to personal preference and rice variety.
  - ▶ Never add in water over the maximum level.
3. Clean and dry outside of inner pot, then put it back to the rice cooker gently and turn left and right to make it adequately contact with heating plate.
  - ▶ No foreign matter exists between inner pot and heating plate. Please clean before cooking if any foreign matter exists between
4. Plug power cord to the outlet and plug in the other end to the rice cooker.
5. By closing toward to the end of cooking process, there will be some water boiling sound and a switch click sound. At this moment, the cooking process has been completed.
6. It is not recommended to keep warm more than two hours. It is required to unplug the power cord in order to stop "Keep warm" function.
7. To cook the brown rice, just simply add half cup water additional to the water in the inner pot. EX: 3 cups brown rice with 1.5 more cup water additional to the water up to gauge 3 in the inner pot. It is not recommended to cook less than two-cup rice in this rice cooker whether for cooking white or a brown rice. Please be aware of it.
8. After cooking, check water collector and pour out the water from the collector and place it back. Please do not pour out the water when it's hot.



## Malfunction check

Series	Malfunction	Problem	Resolution	
1	Indicator failure	Plate doesn't heat up	Circuit and power disconnect	Make sure switch, socket, fuse, power conductor has no failure, and plug in well
	Indicator work	Plate heat up	1. Indicator connection loose 2. Indicator is broken	Send to Tatung Service Department
2	Indicator work	Plate doesn't heat up	1. Middle connection loose 2. Heating plate component is burned up	Send to Tatung Service Department
3	Rice is not done well or cooking time is too long	1. Heating plate deformation 2. Inner pot tilted to one side 3. Foreign matter exists between inner pot and heating plate 4. Inner pot deformation 5. It's varied from the rice	1. Serious deformation send to Tatung Service Department 2. Turn around the inner pot to make it normal. 3. If stick foreign matter wipe clean with sand paper. 4. Purchase new inner pot from retailer stores. 5. Anneal rice according to requirement	
4	Rice burned or over done or can not keep warm	1. Cook key disconnect to the leverage linker 2. Alnico temperature restrictor failure 3. Thermostat burned or loose	Send to Tatung Service Department	
5	Spill	1. Steam valve installed badly 2. Steam regurgitation valve deformation or smudgy	1. Install as instruction 2. Clean and maintain according to requirement	

### Warranty:

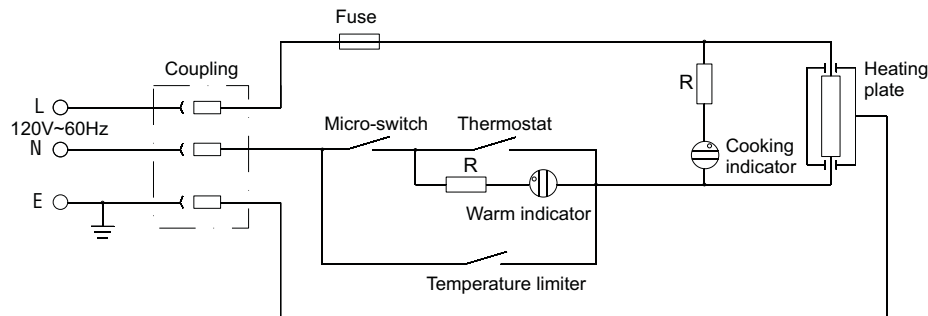
180 days limited warranty.

If the inner pot is damaged to certain level or any foreign matter exists on the heating plate, it may cause overheat on the rice cooker. Users must avoid any of improper use, such as force cook bottom down to stir fry and deep fry. Tatung Co. of America, Inc. will not be responsible for any misuse. Please contact 310.637.2105 Ext.216 regarding any service question.

### Special announcement:

All the data are checked to the letter. If any misunderstanding occurs due to the print failure or misunderstanding of the content, our company withholds the right of final explanation. If technical improvement occurs, it will be included in new version of user manual and will not inform; the product appearance, color changes, please refer to the actual product.

## Circuit diagram



## Water level and rice capacity:

1. Due to the capacity, please do not fill water more than 10 on the scale in the inner pot. Please notice that the water will spill out through the valve and cause the starch spilling all over the counter top if the water is more than 6-gauge.

2. The maximum capacity is 10 cups for white rice and 7.5 cups for brown rice. Because every cup of brown rice requires 0.5 cup more water.

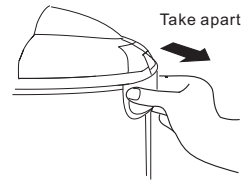
3. Porridge and congee are not recommended on this type rice cooker. Because the rice starch can be spilled easily through the valve when water is boiling. The rice cooker can be easily damaged or shortened the product life by cooking porridge and congee.

4. Tatung Company of America, Inc. will not be responsible for any misuse.

## Water collector

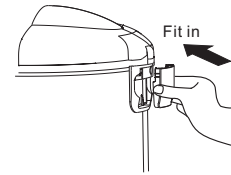
### Take apart

Hold the water collector and pull.



### Fit in

Click in the water collector into the groove.



## Clean

1. Wash with water or soapy water and dry with paper towel or cloth.
2. Cooking Pot – Rice and other foreign matters may be stuck to the heating plate and users shall wipe it off with soft and dry cloth.
3. Collector – pull out the water collector from back of the cooking pot and drain off the water in the water collector. Wash it with clean water or dish soap. After washing and cleaning, place it back to the same spot. The water will drift without it.

## Safeguard

1. Do not put in damp or unsteady place.
2. Make sure the plug fits into the outlet well, otherwise it may cause fire due to overheat.
3. Do not put cooker in damp or unsteady place. Keep away from fire or any heating source.
4. Keep face and hand away from hot steam outlet on top lid.
5. Do not immerse the cooker into water or rinse it. It may cause electric shock, a short circuit, or the damage on the rice cooker.
6. Do not use inner pot on the stove or any heating source other than the rice cooker itself.
7. The cooking light will be on once the power cord is plugged then turned off and warming light will be on instead. Cooking light will be on and warming light will be off as the cook button is pressed down.

2. Don't share with other electric appliance with multi-socket.



3. Put cooker out of the reach of children otherwise may cause hazard by misoperation.



4. Don't cover steaming outlet with cloth lest upper lid deformation or color change.



5. Power cord should not be twisted when unplugging. Please hold the plug to unplug.



\* If the power cord is damaged, please contact  
Tatung Service Department.