

# **Air Presentation System User Manual**

**(Model Name: WS-9211G)**

Version: 1.02

Date: Dec 05, 2006

*Contents of Table*

<b>1. Overview .....</b>	<b>3</b>
<b>2. Quick Start.....</b>	<b>5</b>
<b>3. Client Utility .....</b>	<b>7</b>
<b>3.1 Starting Program.....</b>	<b>7</b>
<b>3.2 Login.....</b>	<b>8</b>
<b>3.3 Buttons Description.....</b>	<b>9</b>
<b>3.4 Start Presentation .....</b>	<b>9</b>
<b>3.5 Stop Presentation.....</b>	<b>10</b>
<b>3.6 Open Admin Web Page.....</b>	<b>10</b>
<b>3.7 Searching Server .....</b>	<b>11</b>
<b>3.8 System Information.....</b>	<b>11</b>
<b>3.9 Exit Program .....</b>	<b>11</b>
<b>4. Web Management.....</b>	<b>11</b>
<b>4.1 Home Page .....</b>	<b>11</b>
<b>4.2 Download Software .....</b>	<b>12</b>
<b>4.3 Conference Control.....</b>	<b>13</b>
<b>4.4 Login Web Admin.....</b>	<b>14</b>
<b>4.5 System Status .....</b>	<b>15</b>
<b>4.6 Operating Mode.....</b>	<b>15</b>
<b>4.7 Projection Setup .....</b>	<b>19</b>
<b>4.8 Change Passwords .....</b>	<b>20</b>
<b>4.9 Reset to Default .....</b>	<b>20</b>
<b>4.10. Firmware Upgrade.....</b>	<b>21</b>
<b>4.11. Reboot System .....</b>	<b>22</b>
<b>4.12. Logout.....</b>	<b>22</b>
<b>5. [ Appendix ].....</b>	<b>23</b>
<b>5.1. Wall Mount.....</b>	<b>23</b>

# 1. Overview

WS-9211G is a easy installation、 convenient operation and user friendly projecting device。 It turns your current Projector into a high-end Projector。 With the WS-9211G your Projector become a wireless device and PC/Notebooks will be more easy to project screen to Projector。

## ■ Plug & Play

WS-9211G is a plug-and-play device which is easy to install and connect with. Any Notebooks/PCs with built-in Centrino or Wi-Fi card can easily download driver and connect to WS-9211G.

## ■ Flexibility

WS-9211G is compatible to all kinds of projectors, using wire-line or wireless connection, to display presentations. Instantly project your screen to the projector with just one mouse click. Nor more cable swapping hassles.

## ■ Performance

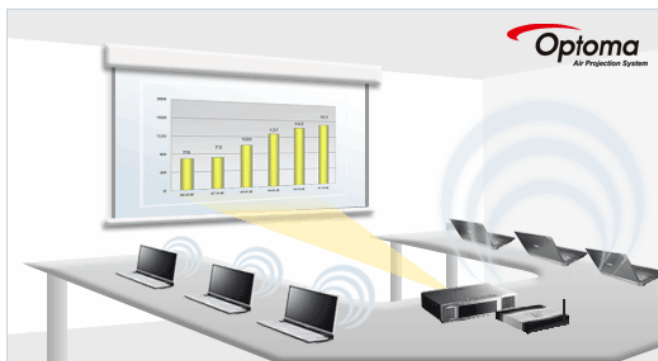
WS-9211G has the ability to deliver real time animation screens for up to 1024x768 resolutions in 24-bit color depth. It also provides friendly web-based administrating UI for easy configuration and wireless security setups.

## ■ Security

Support Login code to protect other users from accessing presentation contents. During presentation, screen images can also be protected by WEP 64/128 encryption.

## ■ Conference control

Supporting multi-users to switch presentation, any member at the conference can easily login to presentation server and switch the computer's screen to Projector without moving the computer to Projector。



- Different operating mode to fulfill both Wireless and Ethernet environment
- One button operation

User-friendly graphic interface to allow users to use it without any training.



- Intelligent searching function

After perform WS-9211G utility, the utility will automatically search all the WS-9211Gs which are available and within the wireless LAN cover range. Users don't need to do any other setting, without worrying about the operation procedures.

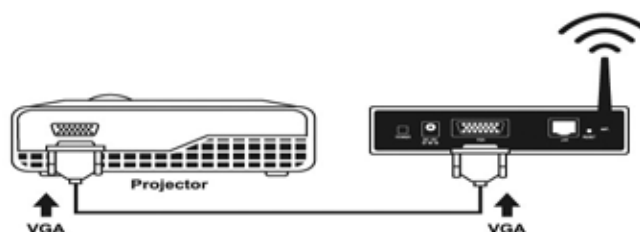
## ➤ Features

- Wireless presentation ... no more cable swapping.
- Compatible to all projectors with standard VGA connectors.
- One-Click to switch presenters' displays.
- Real time display for PowerPoint presentations, images and applications.
- Supports display resolutions up to 1024x768 with 24-bit color.

- No installation CD required, software is directly downloaded from the device.
- Provide session security login and wireless WEP key to protect presentation contents.
- Conference control function is provided for the host to moderate a meeting.
- Provide friendly web-based user interface for easy configuration.
- Support static-IP and DHCP server.

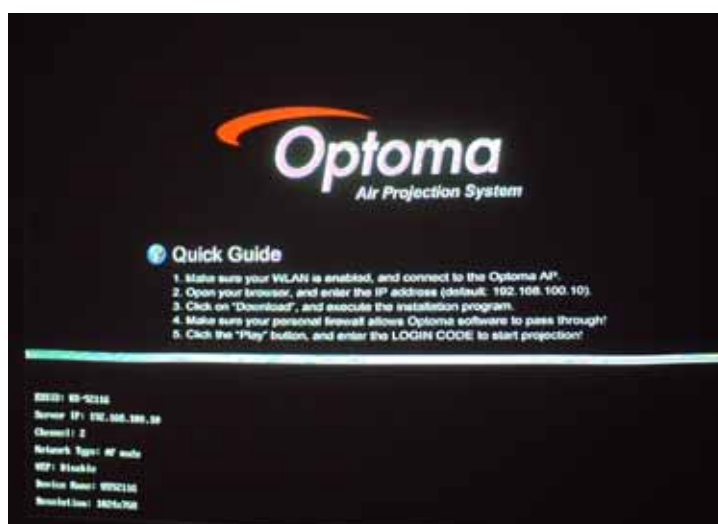
## 2. Quick Start

- 1) Connect projector VGA cable to WS-9211G box VGA connector and turn on projector power.



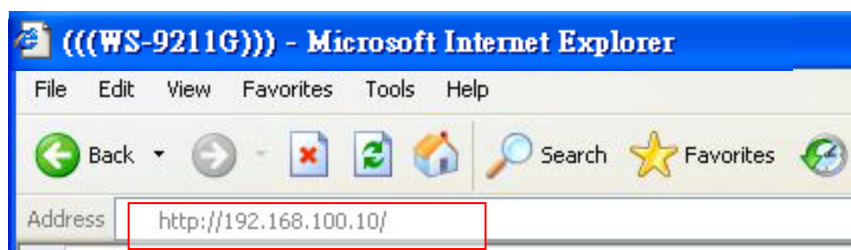
- 2) Turn on WS-9211G box.

- ◆ When Projector shows the default menu on the screen as below, it indicates the WS-9211G box is ready now.



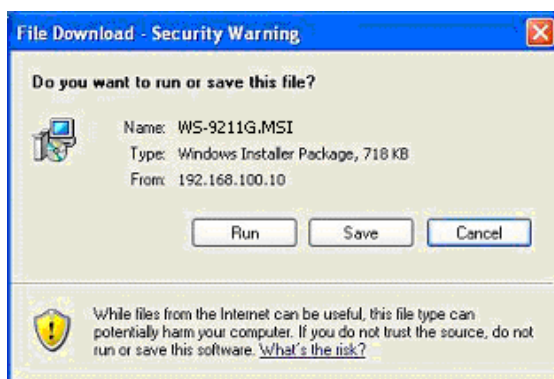
- 3) Make sure your PC WLAN is enabled already, and connect your PC with WS-9211G box.
- 4) Open your browser and enter the IP address to get in WS-9211G web home page.
  - ◆ The default IP address of WS-9211G is **192.168.100.10** or refer to the IP

address shown on the left corner of projector screen.



- 5) Click on “**Download Software**”, and execute the installation program.
  - ◆ After install the program, WS-9211G shortcut will come out on the PC screen.





- 6) Make sure your personal firewall allows WS-9211G software to pass through.
- 7) Enter the **LOGIN CODE** and
  - ◆ You can see the login code on the projector screen



- 8) Click the “**Play**” button to start projection !

### 3. Client Utility

#### 3.1 Starting Program

After you download WS-9211G Windows program via web page successfully, then follow below steps to start.

- 1) Click Optoma icon to execute the program.



- 2) Program start to search for WS-9211G box automatically,
- 3) If WS-9211G box founded then **“Login Code”** dialog box will be pop up on the PC screen.
- 4) If not, will enter to disconnected state and **“Reconnect”** button shown for you to try again.

- **Searching for WS-9211G box**



- **WS-9211G box is founded and enter login code to start.**



- **Failed to find WS-9211G box**



## 3.2 Login

- 1) After “Login Code” dialog box shown, enter login code to start presentation.
- 2) You can see the login code shown on the projector screen.





### 3.3 Buttons Description

1) After login successfully, operating deck comes out.



2) Click following buttons to Start or Stop presentation.



Start projecting



Stop projecting



Refresh projecting screen



Server Login Code



Function menu



While projecting in progress, this icon is blinking




Minimize the program




Exit the program

### 3.4 Start Presentation

Click  to start wireless presentation.




### 3.5 Stop Presentation

Click  to Stop wireless presentation.

(you may need to Stop before another one login)



### 3.6 Open Admin Web Page

Click  to open function menu and select “**Web Admin**” management web page.

The web page detailed functions will be described on next chapter.



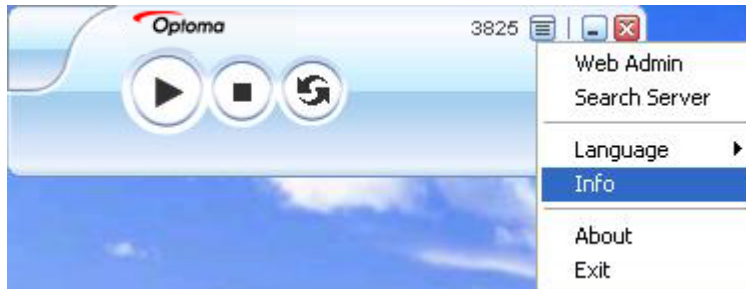
## 3.7 Searching Server

Click “**Search Server**” to search for WS-9211G box.




## 3.8 System Information

Click “**Info**” to show system information. It includes product model number, IP address and other information.



## 3.9 Exit Program

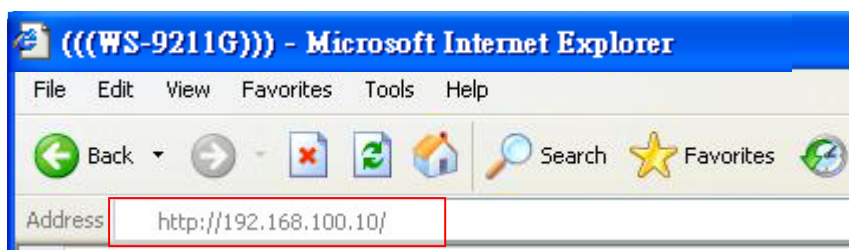
Click  to terminate the program.

## 4. Web Management

### 4.1. Home Page

1. Make sure your PC connect to WS-9211G box successfully.

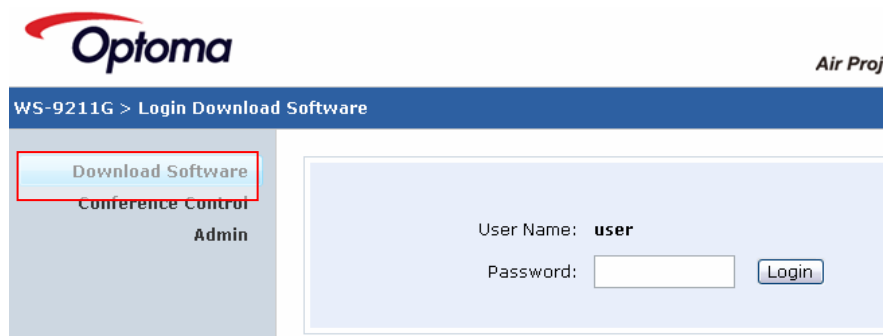
2. Open your browser, it will enter WS-9211G home page automatically.
3. If not, enter your IP address on the browser, you can see the IP on the projector screen..
4. The default IP is 192.168.100.10








## 4.2. Download Software

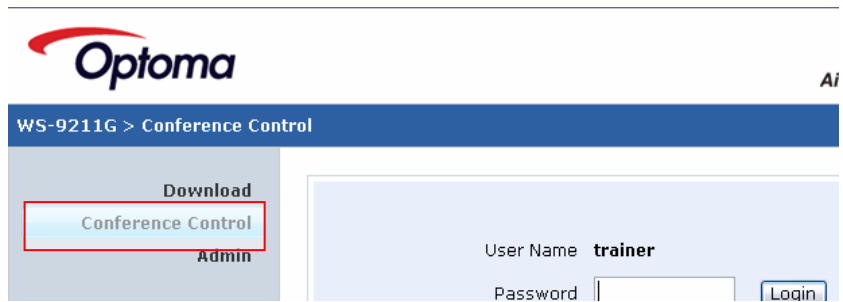
Select “**Download software**” function.

1.
  1. Press “**Login**” button to download Utility, the default password is blank
  2. You can save file first then execute later or execute this utility directly.
  3. Follow Installation Wizard instructions to proceed till the installation process complete.
  4. If pop up “**Windows Security Alert**” because Windows firewall block this program. You just press “**Unblock**” button to continue installation.
  5. Once installation complete, a utility shortcut come out on the screen.



## 4.3. Conference Control

1. This function allow you to host a meeting smoothly without projector cable swapping and each participants can show their presentation easily.
2. Select “**Conference Control**” function.
3. Enter password, the default value is “trainer”, and then press [Login].
4. After login, you can see a User List on the screen which indicates all of users connected to WS-9211G box.
5. There are three columns, “**Computer Name**”, “**Play Control**” and “**IP Address**”.
6. You can press “**Play Control**” button  to control who is next presenter by  “**Play**” button and  “**Stop**” button.
7.
  - **Computer Name**: The name of PC connected to WS-9211G box.
  - **Play control** : Show current user’s projecting status.
    -  : Start projecting
    -  : Stop projecting.
  - **IP address** : The IP address of PC



## 4.4. Login Web Admin



1. Click [**Admin**] and then enter password to login web page.
2. The password default value is “admin”.

## 4.5. System Status

The screenshot displays the Optoma WS-9211G Admin interface. The breadcrumb trail is 'WS-9211G > Admin > System Status'. The left sidebar contains a menu with 'System Status' highlighted in red. The main content area shows the following data:

<b>Model Name</b>	WS-9211G
<b>Versions</b>	
Firmware Version	1.0.3.0
Software Version	1.0.3.0
<b>Network Status</b>	
Operating Mode	Independent Mode
IP Address	192.168.100.10
Wireless MAC Address	00:c0:a8:bb:cb:6a
Subnet Mask	255.255.255.0
DHCP Default Gateway	192.168.100.10
<b>Connection Status</b>	
Projecting Status	Waiting for Projecting
Total Users	0

Copyright © 2006 Optoma Corp. All rights reserved.

\*\*\* Click [System Status], shows current system status.

**Model Name:** Product model name

**Versions:**

1. **Firmware version no.:** Product firmware version number.
2. **Software version no.:** Windows client utility version number.

**Network Status:**

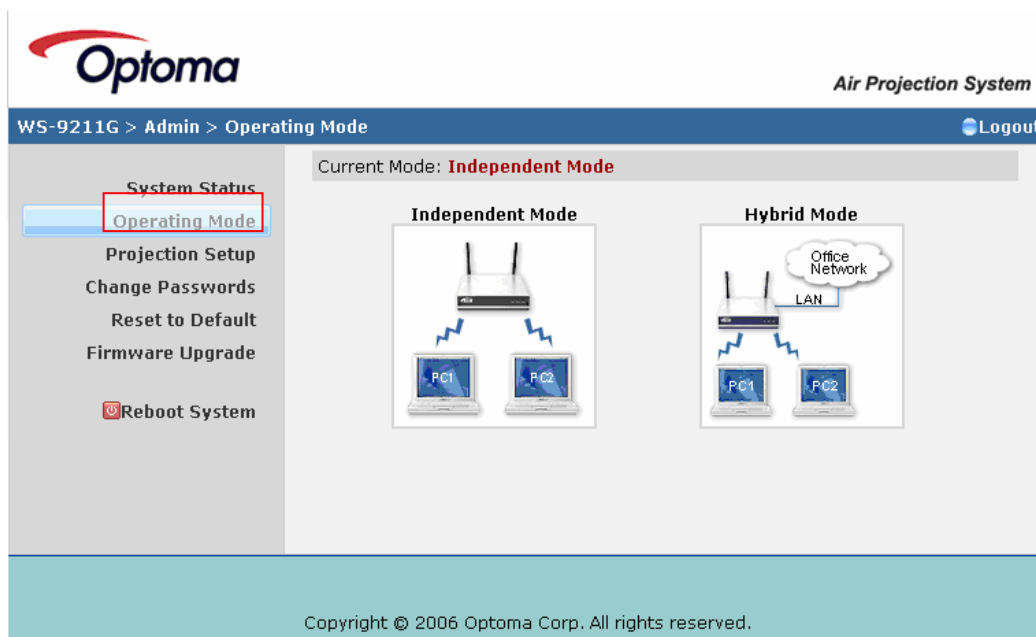
1. **Operating Mode:** current operating mode
2. **IP address :** IP address of WS-9211G
3. **MAC address.**
4. **Subnet Mask.**
5. **Default Gateway**

**Connection Status:**

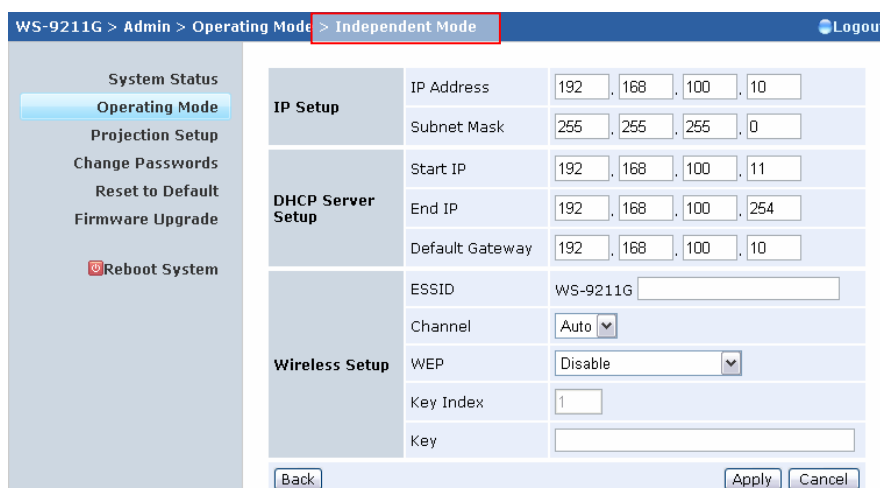
1. **Projecting status:** which is “Waiting for projecting” or “Projecting”
2. **Total Users:** how many users login to WS-9211G now.

## 4.6. Operating Mode

There are three kinds of operating mode, which one is suitable for you that depends on your office network configurations.



1. [ Independent Mode ]



\*\*\* Click [ Independent Mode] button to select this mode.

- ◆ This mode is the simplest and easiest way to get presentation up and running.
- ◆ Your client PC can only connect to WS-9211G through WLAN, and your



PC's IP address get from WS-9211G automatically.

- ◆ In this mode, WS-9211G provide DHCP server capability.
- ◆ You can't connect to office network through WS-9211G's LAN port because the LAN port is disabled.

#### < IP Setup >

- ◆ IP Address: The default value is 192.168.100.10.
- ◆ Subnet Mask: The default value is 255.255.255.0

#### <DHCP Server Setup >

- ◆ Start IP: The start IP address of DHCP Server.
- ◆ End IP: The end IP address of DHCP Server.
- ◆ Default Gateway: The default value is 192.168.100.10

#### < Wireless Setup >

- ◆ SSID: SSID string, max. length is 32 bytes.
- ◆ Channel: to set fixed channel or Auto. The "Auto" means after power on WS-9211G, it will scan all of wireless channel and select clear one channel automatically.
- ◆ WEP: you can Disable WEP key or select one of 64bit or 128bit in ASCII or HEX string..
- ◆ Key: If WEP is enabled, you have to set key value according to WEP mode you selected.

<Apply >: press button to select this mode

<Cancel > : press button to abort action.

<Back >: Back to Operating mode main menu

## 2. [ Hybrid Mode ]



\*\*\* Click [ **Hybrid Mode** ] button to select this mode.

- ◆ This mode allows you install WS-9211G to existing office network through LAN port so that internet access is possible.
- ◆ The IP of your PC is assigned through enterprise's DHCP server over WS-9211G's LAN port.
- ◆ You have to assign WS-9211G IP address manually. Make sure both WS-9211G and client PC are on the same subnet.
- ◆ In this mode, WS-9211G has provided DHCP client and DHCP server capability.

#### < IP Setup >

- ◆ **IP Address:** The default value is **192.168.100.10**.
- ◆ **Subnet Mask:** The default value is **255.255.255.0**
- ◆ **Default Gateway:** The default value is **192.168.100.10**

#### < Wireless Setup >

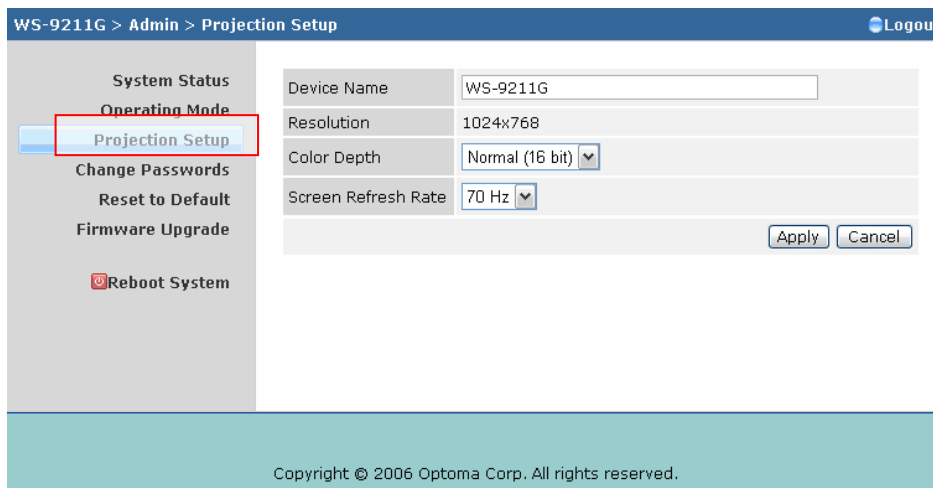
- ◆ **SSID:** This is SSID of WS-9211G. The string length is 32 bytes.
- ◆ **Channel:** to set fixed channel or Auto. The "Auto" means after power on WS-9211G, it will scan all of wireless channel and select clear one channel automatically.
- ◆ **WEP:** you can Disable WEP key or select one of 64bit or 128bit in ASCII or HEX string..
- ◆ **Key:** If WEP is enabled, you have to set key value according to WEP mode you selected.

<Apply >: press button to select this mode

<Cancel > : press button to abort action.

<Back >: Back to Operating mode main menu

## 4.7. Projection Setup



WS-9211G > Admin > Projection Setup Logout

System Status	Device Name	WS-9211G
Operating Mode	Resolution	1024x768
<b>Projection Setup</b>	Color Depth	Normal (16 bit) ▼
Change Passwords	Screen Refresh Rate	70 Hz ▼
Reset to Default	<input type="button" value="Apply"/> <input type="button" value="Cancel"/>	
Firmware Upgrade		
Reboot System		

Copyright © 2006 Optoma Corp. All rights reserved.

\*\*\* Click [**Projection Setup**] button

- ◆ <**Device Name**>: The device name of WS-9211G.
- ◆ <**Resolution**>: Select the resolution between 800x600, or 1024x768
- ◆ <**Color Depth**>: provide WS-9211G output with 16bit or 32 bit color depth. It depends on your PC settings.
- ◆ <**Screen Refresh Rate**>: This is VGA output refresh rate, provides 60 Hz and 70Hz to suit for different kinds of projectors..
- ◆ <**Apply**> : Confirmation and Save modifications
- ◆ <**Cancel**>: Cancel all the modifications

## 4.8. Change Passwords

\*\*\* Click [**Change Password**] button, to change password value.

- ◆ <**Enter New Password**>: enter new password you want to change for each category.
- ◆ <**Confirm New Password**>: double confirm new password.
- ◆ <**Apply**>: Confirmation and Save modifications.

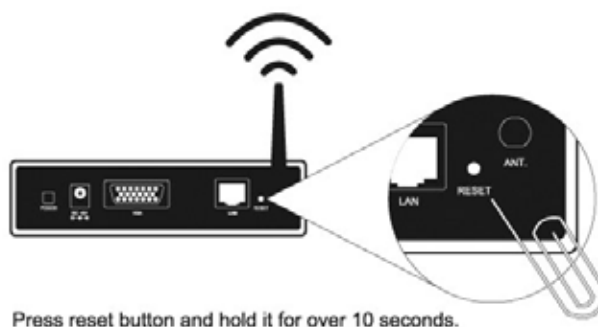
## 4.9. Reset to Default

\*\*\* Click [**Reset to Default**] button to restore factory default settings.

<**Apply**> : Confirmation and action.

\*\*\* **Another way to restore Factory Default Settings, Follow below procedures.**

1. Power off WS-9211G.
2. On the rear panel, press [**Reset**] button and **Hold**.
3. Turn on WS-9211G box.
4. Wait for over 10 seconds and relief [**Reset**] button.
5. It will take effect to restore factory default settings.



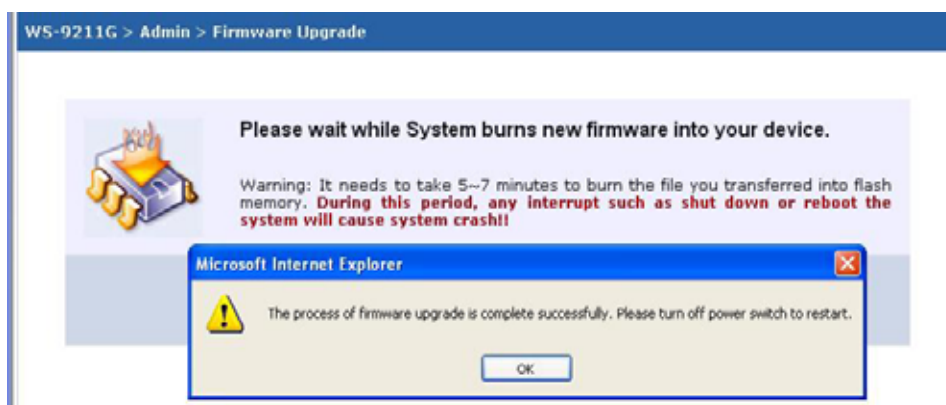
## 4.10. Firmware Upgrade


A screenshot of the WS-9211G Admin Firmware Upgrade page. The page has a blue header with "WS-9211G > Admin > Firmware Upgrade" and a "Logout" link. On the left, there is a sidebar menu with options: "System Status", "Operating Mode", "Projection Setup", "Change Passwords", "Reset to Default", and "Firmware Upgrade" (highlighted with a red box). The main content area shows the current "Firmware Version" as 1.0.3.0 and "Release Date" as 20060817. Below this, a warning message states: "After you apply 'Upgrade' button, projecting function will be terminated." There is a "Filename" input field with a "浏览..." (Browse) button and an "Upgrade" button.

\*\*\* Click [**Firmware Upgrade**] button to upgrade firmware.

1. Firstly, you have to get latest firmware image file from your vendor.
2. Click <**Browse**> to specify file name you want to upgrade.
3. Click <**Upgrade**> to start.
4. A warning message shown and count down counter on the screen.
5. After a few minutes, a complete message shown on the screen.
6. Restart WS-9211G box to take effect.

A screenshot of the WS-9211G Admin Firmware Upgrade progress screen. The page has a blue header with "WS-9211G > Admin > Firmware Upgrade". The main content area features a warning message: "Please wait while System burns new firmware into your device." Below this, a warning states: "Warning: It needs to take 5~7 minutes to burn the file you transferred into flash memory. During this period, any interrupt such as shut down or reboot the system will cause system crash!" At the bottom, there is a progress bar and a text field showing "Estimated Time remaining: 418 Sec."



 **Warning:** Don't power off WS-9211G while firmware upgrade in progress, otherwise will cause your Box doesn't work and have to return device to your vendor for fixing.

### 4.11.Reboot System



\*\*\* Click [**Reboot System**] button, to restart system

- ◆ <Reboot>: reboot system automatically.

### 4.12.Logout



\*\*\* Click [**Logout**] button, to back Web home page.

## 5. [ Appendix ]

### 5.1. Wall Mount

