

Surveillance Product Catalog

From

AnexSECURE

Sensible Surveillance Solutions

(A Division of SSSPL)

www.sssl.co.in



Leading Providers of Surveillance Solution Systems

Consumer Surveillance

V2. 2009



Smile Security & Surveillance Pvt. Ltd. (SSSPL) is your complete one-stop shop for surveillance systems, featuring the most innovative technology solutions. The Surveillance Solutions offer an unmatched storage expansion feature that can grow with client's needs into tens of Terabytes.

AnexSECURE

Sensible Surveillance Solutions is our IP Video Surveillance division and specializes in offering solutions widely used in commercial applications that require recording with one or more network IP cameras or traditional analog CCTV cameras connected to a surveillance computer. We offer the best-of-class Surveillance solutions for commercial and private sectors.

Our Proof of Concept Center and Test Lab at Bangalore house a range of products and solutions for Storage Consolidation, Capacity-on-Demand, and Centrally Managed Storage Solutions. Our experts personally supervise the implementation of all surveillance projects from concept to completion, followed by regular maintenance and support.

Using state-of-the-art MPEG4-based Digital Video Recorders with remote management facilities, surveillance solutions are available for Home, Retail Chain Stores, Factories, Office Buildings, Critical equipment installations, Road Traffic, Educational Institutes, Day care centers and so on. Powerful management software allows surveillance over Internet including on PDA and handheld devices over GPRS.

SSSPL is primarily in the business of providing Network Security and Surveillance Solutions but not restricted to it as we also do business in Storage Networking Solutions and also developing solutions in Digital Distribution Networks. SSSPL has many associate companies in Taiwan, China and other countries where the products are manufactured for marketing in India.

Table of Contents

Consumer Surveillance	4
Baby Monitor.....	5
CSBAMT3001	5
CSBAMT3002	7
CSBAMT3102	8
CSBAMT3201	10
Car Rear View System	12
CSCARV5001	12
Control Panel	13
CSACTL1003 - wired	13
CSACTL1001- Wireless	14
CSACTL1002- Wireless	15
DIY Camera	16
Bluetooth Camera	16
C4044SC.....	16
SIP Camera (Ethernet model).....	17
C2154VD	17
Snake Camera with LED Flash Light	19
C4034SC.....	19
Sunglass with Camera.....	20
C4014SC.....	20
Wide angle Camera.....	21
C4024VD	21
Wireless Network Camera (IP Camera)	22
N1014MD.....	22
Video Door Phone	23
CSVIDP4202	23
CSVIDP2101	25
CSVIDP4101	27
CSVIDP4203	28
CSVIDP4001	29
Consumer Surveillance DVR	30
Covert Speaker DVR.....	30
D2054MT	30
Mini DVR with Built-in 2.4"LCD Monitor	31
D2101MN.....	31
Wireless Portable DVR.....	32
D2124MA.....	32
USB Pen DVR.....	33
CSPEDV6001 (2GB).....	33
CSPEDV6102 (4GB).....	34
CSPEDV6103 (4GB).....	35
Sensors	36
Gas Leaking Detector	36
CSGASD2201	36
CSGASD2202	37
Glass Break Detector.....	38
CSGLBD1205.....	38
Indoor Siren	39
A1030AS	39
Smoke detector	40
A9300SS	40
CSSMKD2001	41
PIR detector.....	42
CSPIRD2102-Wired	42
CSWPID2301-Wireless.....	43
Wireless Surveillance.....	44
D2224MN + C3263VD + C2223VD.....	44

DVRs

Cameras

DVR Cards

DVR Kits

Consumer Surveillance

Accessories

Consumer Surveillance



Main Features

- 2.4" TFT-LCD with 480x240 resolutions
- Bedwetting/Motion/Voice detection optional
- Night vision (effective range: 5m)
- Built-in microphone in camera & speaker in receiver for audio monitoring
- 4 channels available to avoid possible interference
- Up to 100m (330ft.) transmission range in open space

Specification - General

Transmission Frequency	ISM 2,400~2,483MHz
Transmission Power	10mW/CE; 2mW/FCC
Operating Frequency	2414MHz; 2432MHz; 2450MHz; 2468MHz
Unobstructed Effective Range	100m(Min.)
Modulation Mode	FM
Operating Temperature	-10°F ~ +50°F / +14°F ~ +122°F
Operating Humidity	<=85%RH

DVRs

Cameras

DVR Cards

DVR Kits

Consumer Surveillance

Accessories

Technical Specifications

Model	CSBAMT3001
Camera	
Imaging Sensor	CMOS
CMOS Total Pixels	720×576(NTSC); 720(H)×480(PAL)
Horizontal Resolution	380 TV lines
View Angle	55°
Minimum Illumination	0 Lux
Night Vision Range	5 m
Bandwidth	18MHz
Battery Working Time	8hours (IR OFF) (4XAA)
Motion Detection Distance	<8m
Sound Control Sensitivity	>63dB
Consumption Current	120mA (IR OFF)(Max.) & 220mA (IR ON)(Max.)
Power Supply	8VDC
Dimensions (W×D×H)	86×49×135 mm
Weight	146g
Receiver	
LCD Screen Type	2.4" TFT-LCD
Effective Pixels	480 x 240
Receiving Sensitivity	≤-85dBm
Video System	NTSC/PAL
Battery Working Time	5hours (IR OFF) (4XAA)
Color Configuration	R.G.B. delta
Consumption Current	200mA (Max.)
Power Supply	8VDC
Dimensions [W x D x H]	86 x 53 x 142 mm
Weight	142g

Package Contents

- Wireless Camera x1
- Wireless Receiver x1
- Adapter for Camera x1
- Adapter for Camera x1
- AV Cable x1

Baby Monitor

CSBAMT3002

Main Features

- 2.4-inch TFT-LCD palm monitor with built-in battery
- Operation modes: Auto, Manual, Scan
- Adjustable cycle time and brightness
- Idle channel can be on/off
- Low battery indication
- Night vision camera with sound trigger/alarm
- Adjustable sound sensitivity
- Desktop, wall and cradle mounts
- Rechargeable battery for camera portable use
- Available in 900MHz and 2.4GHz
- Support to 3 cameras



Technical Specification

Model	CSBAMT3002
Camera	
CMOS Total Pixels	510*492(NTSC) / 628*582(PAL)
Transmission Frequency	ISM 2,400~2,483MHz
Operating Temperature	-30~65°C / -22°F~+149°F
Storage Temperature	-40~80°C / -40°F~+176°F
Operating Humidity	≤80%RH
Auto Electronic Shutter	1/60 ~ 1/15,000 sec
Horizontal Resolution	380TV Lines
IR LED	8LEDs
IR View Distance	up to 10 ft
Minimum Illumination	5Lux/F1.2
Power Supply	DC 9V 150MA
Dimensions	86.2*78.17*58.7mm
Monitor	
Display	2.4" TFT
Receiving Sensitivity	≤-80dBm
LCD Resolution	480*240(DOT)
Signal Noise Radio	48dB
Operating Temperature	0~50°C / 32°F~+122°F
Storage Temperature	-20~60°C / -4°F~+140°F
Power Supply	DC9V 350MA
Dimension	73.5*141.9*28.7mm
Weight	272g

Package Contents

Package Dimension (W*D*H)	259*272*69mm
20FT Container Load Quantities	5102
40FT Container Load Quantities	11020

DVRs

Cameras

DVR Cards

DVR Kits

Consumer Surveillance

Accessories

Baby Monitor

CSBAMT3102



Main Features

- Small palm size of receiver for mobile usage
- 2.5" LCD screen with 480 × 234 resolution
- Rechargeable Li-battery(2 hours) in receiver
- Built-in rechargeable Li-battery(5 hours) in camera
- 380TV lines clear picture display
- 4-channel available to avoid interference
- Built-in microphone in camera and speaker in receiver
- Min. 100m transmission distance without block

DVRs

Cameras

DVR Cards

DVR Kits

Consumer Surveillance

Accessories

Technical Specification

Model	CSBAMT3102
Camera	
Imaging Sensor	CMOS
CMOS Total Pixels	628*582(PAL) / 510*492(NTSC)
View Angle	62°
Transmission Frequency	ISM 2400MHz - 2483MHz
Transmission Power	10mW/CE - 2mW/FCC
Modulation Type	FM
Bandwidth	18MHz
Power Supply	DC +8V
Consumption Current	80mA
Unobstructed Effective Range	100m
Dimensions(W*D*H)	44*21*21mm (excluding bracket)
Weight	60g
Receiver	
Receiving Frequency	ISM 2400MHz - 2483MHz
Intermediate Frequency	480MHz
Demodulation Type	FM
LCD	2.5"TFT
Receiving Sensitivity	<-85dBm
Power Supply	DC +5V
Consumption Current	700mA
Dimensions(W*D*H)	80*38*130mm (main body)
Weight	250g (main body)

Package Contents

- 1-2.4GHz Wireless Camera
- 1-2.4GHz Wireless Receiver
- 2-Lithium Battery for Receiver
- Earphone
- Adapter for camera
- Adapter for receiver
- Video Cable
- Carrying Bag for Receiver
- Mounting Hardware
- Base Charger & Power Cable (optional)
- Lens Adjuster
- Battery Clip
- User's Manual

DVRs

Cameras

DVR Cards

DVR Kits

Consumer Surveillance

Accessories



Features

- The kit includes one wireless color camera CA500DP with night vision & one wireless 2.5 inch TFT-LCD monitor M250S
- An ideal system for baby care, elder or patient attendance, and housing monitoring; up to 600 feet transmitting range in open area

Camera: 2.4 GHz wireless 2.5" TFT-LCD monitor

- 2.5" TFT-LCD display for high-quality color picture
- The brightness, color, alarm volume and audio volume can be adjusted
- Supports up to 3 cameras. Manual or auto switching among cameras, and the dwell/cycle time can be adjusted from 2 seconds to 30 seconds
- Has motion detection alarm. Monitor beeps when motion detected by camera, and the alarm volume can be adjusted easily from the tuning
- LCD display can work with 3 modes: Scan, Auto and Manual
- In scan mode, the monitor hibernates in standby to save battery, and either motion trigger or press any button can activated it
- In auto mode, the system automatically rotates through all active camera
- Work with 2 different power supplies: AC adapter, BP250 battery pack
- The monitor can be in portable use more than 4 hours with the 4 pcs batteries

Receiver: 2.4 GHz wireless color camera with motion detection and night vision

- Built-in microphone transmits sound
- Durable weatherproof construction for outdoor use
- Works with 2 different power supplies: AC adapter, and rechargeable battery pack
- The rechargeable battery pack can support the camera CA500DP to work more than 10 hours

DVRs

Cameras

DVR Cards

DVR Kits

Consumer Surveillance

Accessories

Technical Specifications

Model	CSBAMT3201
CAMERA	
TV system	PAL/NTSC (color) standard
Integrated lens	4.3mm,f1.8 fixed focus
Resolution	360 TV lines
Image sensor	1/3" color CMOS
Current consumption	approx. 120mA
Dimensions	2.3"W x 7.3"H x 3.8"D
RECEIVER	
Screen mode	2.5 inch fresh new TFT-LCD
Signal/Noise ratio	48dB
Display resolution	480H * 284W (dot)
Current consumption	Approximately 800mA
Dimension	2.74"W * 7.2"H * 0.95"D

Package Contents

- 2 Adapters
- 1 User Manual
- 1 Bracket
- 1 AV Cable

Packing Data

- Gift box/White box Dimension: 261*77*318mm
- G.W.: 1.2kgs
- Outer Carton Dimension: 335*285*340mm
- G.W.: 5.0kgs
- pcs/ctn: 4

DVRs

Cameras

DVR Cards

DVR Kits

Consumer Surveillance

Accessories

Features

- Automatically start up the rear view images while reversing.
- 380TV lines clear picture display
- 110 view angle for wide eyeshot
- Tiny size for discreet observation
- Water resistance design for outdoor usage
- Easy installation for DIY
- 2.4" LCD screen display for vivid and bright images.
- Suitable for car, small and medium bus.

Specification

Model	CSCARV5001
Transmitter	
Imaging Sensor	1/3" CMOS
CMOS Total Pixels	510*492(NTSC) / 628*582(PAL)
Transmission Frequency	ISM 2,400~2,483MHz
Transmission Power	10mW/CE;2mW/FCC
Transmission Distance	50m Without Block
Operating Temperature	-30~65°/-22°~+149°
Storage Temperature	-40~80°/-40°~+176°
Operating Humidity	≤80%RH
Operating Condition	Car
Signal Noise Radio	40dB(AGC OFF)
Horizontal Resolution	380TV Lines
View Angle	110°
Minimum Illumination	5Lux/F1.2
Weatherproof Degree	IP65
Power Supply	DC 12V (Car Power Supply)
Dimensions	260*32*34mm
Weight	100g
Receiver	
Display	2.4" TFT
Receiving Sensitivity	≤80dBm
LCD Resolution	480*240(DOT)
Signal Noise Radio	38dB
Operating Temperature	0~50°/32°~+122°
Storage Temperature	-20~60°/-4°~+140°
Power Supply	DC12V(Car Power Supply)
Dimension	85*93*43mm
Weight	105g
Display	2.4" TFT



DVRs

Cameras

DVR Cards

DVR Kits

Consumer Surveillance

Accessories



Product Features

- 4 wired zone (8 zones with zone doubling) + 1 keypad zones
- 2 partitions
- 256 event buffer
- 48 user codes+1 Master code+ 1 installation code
- 1 PGM output
- 2-wire smoke detector input
- 2 central station telephone number
- zone doubling connections
- Master Code Lock (cannot change or delete the Master Code or User Code 01)
- Supports pager reporting
- Closing Delinquency Timer (transmit a report when last arming exceeds timer)
- 1.1A switching power supply
- 1 supervised bell output
- 1 supervised auxiliary output
- 1 supervised telephone line (supports ADEMCO Contact ID, Pager and slow report formats)

Technical Specification

Model	CSACTL1003
AC POWER	16.5V AC transformer with minimum 20VA rating (40VA recommended),50-60HZ
Battery	12VDC,4Ah/ 7Ah
Aux. power	450mA, fuseless shutdown at 650mA
Bell output	1A, fuseless shutdown at 3A
PGM output	One 50mA PGM transistor output

Control Panel

CSACTL1001- Wireless



CE

Features

- 16 wireless zones, 4 wired zones, compatible with all kinds of wireless and wired detector.
- LCD display, friendly English guidance for operation
- Smart program: the user can set the parameter freely.
- Compatible with communication protocol: ADEMCO 4+1 Contact ID, It can be used by single or net alarm system.
- Automatically dial alarm center, user cell phone or fixed telephone with audible alarm while emergencies happen.
- Alarm received phones: 1 in alarm center and 5 common telephones.
- 7 codes: 1 user code, 1 duress code, 5 operator code.
- Wireless code learns restoring and reading function with simple usage
- 5 remote control panel at most.
- Arm & disarm using 5 wireless remote controllers on the spot.
- Several alarm modes: alarm bell and voice alarm
- Three groups timed auto arm/disarm time
- Protection zone valid/bypass selectable, user can set alarm area as desired.
- Restore user password to factory defaults by hardware and restore the system factory defaults by software.
- Record 40 latest alarm events
- Malfunction alarm: AC power fail, low voltage and telephone line loss
- Set real-time clock inside
- Auto-recording function, record the address of the alarm and other information
- Programmable relay output
- Anti-tamper function of the control panel
- Field monitor function

Technical Specification

MODEL	CSACTL1001
Power adapter working voltage	AC100V ~240V
Operating voltage of the control panel	12VDC
Static operating current	≤130mA
Bell output current	≤400mA
Dimension	250×150×45mm
Wireless frequency	315 MHz/433MHz/868MHz
detector receive range	90m(no obstacle)
remote control valid range	50m (no obstacle)
record time	4 second

DVRs

Cameras

DVR Cards

DVR Kits

Consumer Surveillance

Accessories

Control Panel

CSACTL1002- Wireless



Product Features

- 16 programmable wireless zones: compatible with wireless detectors
- 5 remote controllers
- Wireless learning code, easy operation
- 6 alarm telephone number: 2 for central station and 4 for private telephones
- Communication protocol: ADEMCO 4+1/Contact ID.
- Remote control through telephone
- Save Telephone fee by message send setting
- Bell output, buzzer indication and voice alarm
- Bell callback function
- Three passwords: 1 user code+1 duress code +1 operation password
- System programming and user password restore
- 250 event buffer
- System Self-checking

Technical Specification

Model	CSACTL1002
Operating voltage	12VDC
Power adapter working voltage	100-240VAC
Operating current Static	≤130mA
Bell output current	≤ 400mA
Operating temperature	-10°C+55°C
Operating humidity	≤90%
Standby Power	7.2V/600mA
Wireless frequency	315MHz/433MHz (option)

DVRs

Cameras

DVR Cards

DVR Kits

Consumer Surveillance

Accessories

Bluetooth Camera C4044SC



Key Features

- portable covert camera
- bluetooth with camera
- can match to our mini DVR

Technical Specifications

Model	C4044SC
Image Device	1/8" DSP Color CDC Camera Sensor
Video System	NTSC / PAL
Resolution	420 TVL
Min. Illumination	1 Lux / F 2.0
Lens	3.7mm pinhole lens, F2.8
Effective Pixels	640 x 480
S/N Ratio	More than 48 dB
Gamma	0.45
Electronic Shutter	1/50 ~ 1/125,000
Horizontal Sync Frequency	15.734 KHz(NTSC) / 15.625 (PAL)
Vertical Sync Frequency	60Hz(NTSC) / 50Hz(PAL)
Sync. System	Internal
Video Output	1 Vp-p / 75 Ohms
Storage Temperature	-30° ~ 60°C
Operating Temperature	-10° ~ 45°C
Power Supply	DC3.6V ~ 6V (Standard)
Power Consumption	130mA

DVRs

Cameras

DVR Cards

DVR Kits

Consumer Surveillance

Accessories

SIP Camera (Ethernet model) C2154VD



Features

- Support Both HTTP and SIP Network Protocols
- High Quality MPEG-4 and MJPEG Video Streaming
- Multiple Video Channels that Support Various Combinations of Video Formats and Resolutions Simultaneously
- Advanced Windows Utility for Monitoring and Recording
- CMOS Sensor
- Speaker Port
- MIC Port
- USB Port
- 10/100 Ethernet Port
- DC Jack
- SIP/IP Protocols

DVRs

Cameras

DVR Cards

DVR Kits

Consumer Surveillance

Accessories

Technical Specification

Model	C2154VD
Networks	10/100 Ethernet LAN Port IEEE 802.11g/b WiFi (optional) PoE (optional)
Video Features	VGA CMOS Sensor Input F2.0 4-Glass Lens Support Multiple Channels with Various Combinations of Video Formats and Resolutions Simultaneously MPEG-4 Video Streaming at: 640x480, 30 fps 320x240, 30 fps 160x120, 30 fps MJPEG Video Streaming at: 640x480, 30 fps 320x240, 30 fps 160x120, 30 fps Audio/Video Synchronization Image Quality Controls: AWB (Auto-White-Balance) AE (Auto-Exposure) Sharpness Video Effects, Video Rotation 180° Dynamic Digital Zoom Multi-Channels Switching Talk, Date & Time
Audio Features	Full Duplex AMR Codecs Bi-Direction Talking Built-in Microphone External Microphone and Speaker Connectors
Protocols	TCP/IP, UDP, HTTP, SIP(RFC3261), ICMP, DHCP, PPPoE, DNS, NTP, FTP, RTP, RTSP
Optical	VGA CMOS Image Sensor F2.0, 4G, Fixed Focus Lens Optional IR LED Module
User Interface	Web User interface Windows Surveillance Utility Command API
Ergonomic Design	Solid Full Metal Housing Hidden Camera Lens Wall-Mount Kit Dust and Splash Cover for Limited Outdoor Uses Optional Pan/Tilt Base with USB Hub for Memory Storage
Alert System	Motion Detection with Multiple Adjustable Detection Areas Email Alert FTP uploading SMS Message
I/O Connectors	Ethernet RJ45 Connector Power Jack USB Connector Line-Audio Input, Speaker Output
Power Supply	Switching Power Adapter: Input : 110V ~ 240V, 50/60Hz Output : 5V/2A DC

DVRs

Cameras

DVR Cards

DVR Kits

Consumer Surveillance

Accessories

Snake Camera with LED Flash Light

C4034SC



Key Features

- Snake camera with LED Flash light
- Can match to our mini DVR

Technical Specifications

Model	C4034SC
Image Device	1/8" DSP Color CDC image sensor
Video System	NTSC / PAL
Resolution	420 TVL
Min. Illumination	1LUX
Effective Pixels	NTSC :450x432; PAL:450x520
S/N Ratio	More than 48 dB
Gamma	0.45
Electronic Shutter	1/50 ~ 1/100,000
Horizontal Sync Frequency	15.734 KHz(NTSC) / 15.625 (PAL)
Vertical Sync Frequency	60Hz(NTSC) / 50Hz(PAL)
Sync. System	Internal
Video Output	1 Vp-p / 75 Ohms
Storage Temperature	-30° ~ 60°C
Operating Temperature	-10° ~ 45°C
Power Supply	DC5V
Power Consumption	200mA
Image Device	1/8" DSP Color CDC image sensor

DVRs

Cameras

DVR Cards

DVR Kits

Consumer Surveillance

Accessories

Sunglass with Camera

C4014SC



Key Features

- Portable covert camera
- A sunglass with camera
- Can match to our mini DVR

Technical Specifications

Model	C4014SC
Image Device	1/8" DSP Color CDC Camera Sensor
Video System	NTSC / PAL
Resolution	420TVL
Min. Illumination	1 Lux / F 2.0
Lens	3.7mm pinhole lens, F2.8
Effective Pixels	640 x 480
S/N Ratio	More than 48 dB
Gamma	0.45
Electronic Shutter	1/50 ~ 1/125,000
Horizontal Sync Frequency	15.734 KHz(NTSC) / 15.625 (PAL)
Vertical Sync Frequency	60Hz(NTSC) / 50Hz(PAL)
Sync. System	Internal
Video Output	1 Vp-p / 75 Ohms
Storage Temp	-30° ~ 60°C
Operating Temp	-10° ~ 45°C
Power Supply	DC3.6V ~ 6V (Standard)
Power Consumption	130mA

DVRs

Cameras

DVR Cards

DVR Kits

Consumer Surveillance

Accessories

Wide angle Camera

C4024VD



Key Features

- Sony 1/3" CCD
- Wide angle 2.1mm lens

Technical Specifications

Model	C4024VD
Image Device	1/3" Sony CCD
Video System	NTSC / PAL
Resolution	420 TVL
Lens	2.1mm
Effective Pixels	PAL: 512(H)x582(v) NTSC: 512(H)x492(v)
S/N Ratio	More than 48 dB
Gamma	0.45
Electronic Shutter	1/50(1/60) ~ 1/100,000
Horizontal Sync Frequency	15.734 KHz(NTSC) / 15.625 (PAL)
Vertical Sync Frequency	60Hz(NTSC) / 50Hz(PAL)
Video Output	1 Vp-p / 75 Ohms
Storage Temperature	-30° ~ 60°C
Operating Temperature	-10° ~ 45°C
Image Device	1/3" Sony CCD
Video System	NTSC / PAL
Resolution	420 TVL
Lens	2.1mm

DVRs

Cameras

DVR Cards

DVR Kits

Consumer Surveillance

Accessories

Wireless Network Camera (IP Camera)

N1014MD

Features:

- No PC required, simple Ethernet connection
- 802.11b/g wireless LAN connection and wired Ethernet connection available
- Remote Pan/Tilt control
- MPEG4 compression
- Alarm function with motion detection
- Built-in microphone, audio functionality
- 310K pixels CMOS sensor with resolution up to 640×480



Technical Specification

Model	N1014MD
General	
Imaging Sensor	1/4" CMOS
Pixels	310000
View Angle	51.0°(H)38.9°(V)
Remote Pan Angle	(-65°~+65°)
Remote Tilt Angle	(-60°~+10°)
Max. Pan/Tilt Angle	P: 50°/s T: 50°/s
Preset Locations	8
Focal Length	f=2.9mm
Aperture	F2.0
Min. Illumination	5-10Lux
Power Supply	DC5V /2 A
Power Consumption	7.5W
Storage Temperature	(-20 ~ +60° / -4 ~ +140°)
Operating Humidity	20~80%RH
Storage Humidity	20~95%RH
Weight	335g
Dimensions (W*L*H)	210*108*108mm
Network	
Image compression	MPEG-4
Max. Image Resolution	640*480
Max. Frame Rate	30fps
Simultaneous Viewers	8
Network Connection	Ethernet(10M/100M)
Wireless LAN	
Wireless Technology	IEEE802.11b/g
Frequency	2,4000~2,483MHz
Transmission Speed	54/22/11/5.5/2/1Mbps
Security	WPA
Audio	
Audio Compression	G.726(40,32,24,16Kbps)
Built-in Microphone	Electret Condenser Mic.
External Mic.Jack	Mini-jack, 3V DC, 2.2K
Audio Line Output	Mini-jack(Stereo), 1Vrms
System requirements	
Operating System	Windows2000/XP
Processor	Intel P3, 1GHz or higher
Memory	256MB RAM Minimum
Web Browser	IE5.5 or later

DVRs

Cameras

DVR Cards

DVR Kits

Consumer Surveillance

Accessories

Video Door Phone

CSVIDP4202



Product Features

- 5 Inches TFT LCD Display
- SIP 2.0 (RFC3261) Compliant
- Video Codecs: H.263, MPEG-4
- Audio Codecs: G.711, G.729a/b
- Speakerphone
- Video Phone
- CMOS Sensor
- 5"LCD Panel
- 10/100 Ethernet Port
- USB Port
- DC Jack
- Housing color "Silver"

DVRs

Cameras

DVR Cards

DVR Kits

Consumer Surveillance

Accessories

Technical Specification

Model	CSVIDP4202
Networks	10/100 Ethernet LAN Port PoE (Optional)
Telephone / Call Features	Hands Free Speaker phone Redial Auto Answer DND (Do-Not-Disturb) Call Mute, Call Hold Caller ID / User Name
Video Features	Built-in VGA CMOS Camera F2.0 / 4 Pieces Glass Lens Full Duplex H.263 and MPEG-4 Video Codecs Video Streaming at CIF (352x288) Resolution up to 30 Frame-Per-Second Audio/Video Synchronization Adaptive Jitter Buffer Bandwidth Control Management Picture-In-Picture AWB (Auto-White-Balance) and AE (Auto-Exposure) Manual White Balance Adjustments Video Input and Output Ports
Audio Features	Full Duplex G.711, G.729 Audio Codecs AEC (Acoustic-Echo- Cancellation) Automatic Gain Control Adaptive Jitter Buffer Voice Activity Detection Comfort Noise Generation, Silence Suppression Bandwidth Control Management Built-in Microphone and Speaker Audio Input and Output Ports
Protocols	TCP/IP, UDP, HTTP, ICMP,DHCP, PPPoE, DNS, NTP, FTP,SIP, RTP, RTCP
Management	Web Management Interface Auto Provisioning USB Flash Provisioning
Ergonomic Design	5" TFT LCD Display Adjustable LCD View Angle Adjustable Camera Lens Angle Magnetic Lens Cover Detachable Handset and Cradle Navigation Keys Soft-Function and Hot Keys
Applications	Screen Sever Photo-Frame Phonebook Multi- Language P-to-P Video Conferencing Remote Video and Audio Streaming SIP Camera Interface (optional) ZigBee Gateway Interface (Optional)
I/O Connectors	Ethernet Rj45 Connector Handset Jack Video Input Port, Video Output Port Audio Input Port, Audio Output Port Power Jack USB Connector
Power Supply	Switching Power Adapter: Input : 110V ~ 240V, 50/60Hz Output : 12V/2A DC

DVRs

Cameras

DVR Cards

DVR Kits

Consumer Surveillance

Accessories



Product Features

- Identify Visitors from Video Phone
- Video/Voice Message
- SIP RFC3261 Compliant
- Video Codecs : H.263, MPEG-4
- Audio Codecs : G.711, G.729
- Numeric Keypad and Door Bell
- 1 LAN Port
- Hands Free Speakerphone
- Electronic Door Lock Control
- VGA CMOS Camera
- Full Duplex G.729a/b and G.711 (u-law/a-law) SIP System
- Text LCD Display
- RFID Card Reader
- SIP system

DVRs

Cameras

DVR Cards

DVR Kits

Consumer Surveillance

Accessories

Technical Specification

Model	CSVIDP2101
Networks	10/100 Ethernet LAN Port PoE (Optional) Phone / Call Features: Hands Free Speakerphone SIP Branch System Call Forwarding Auto Answer Caller ID / User Name
Video Features	Built-in VGA CMOS Camera F2.0 / 4 Pieces Glass Lens H.263 and MPEG-4 Video Codecs Streaming Video at CIF (352x288) Resolution up to 30 Frame-Per-Second Audio/Video Synchronization Adaptive Jitter Buffer AWB (Auto-White-Balance) and AE (Auto-Exposure)
Audio Features	Built-in Microphone and Speaker Full Duplex G.711, G.729a/b Audio AEC (Acoustic-Echo- Cancellation) Automatic Gain Control Adaptive Jitter Buffer Voice Activity Detection Comfort Noise Generation Silence Suppression Bandwidth Control Management
Protocols	TCP/IP, UDP, HTTP, ICMP,DHCP, PPPoE, DNS, NTP, FTIPSIP, RTP, RTCP
Management	Web Management Interface Auto Provisioning
Ergonomic Design	Text LCD Display Built-in White Light Illumination Cap-Sensing Touch Keypad Full-Metal Housing Water & Dust Resistance Pre-Installation Box
Applications	Video Intercom System Call Forwarding Video/Voice Message Electronic Door Lock Control Security Card Reader
I/O Connectors	Ethernet Rj45 Connector Power Jack USB Connector
Power	Built-in 12V/2A Switching Power Supply Extra 12V DC Output
Optional Models	Building & Community Model Single House Model Card Reader Model

DVRs

Cameras

DVR Cards

DVR Kits

Consumer Surveillance

Accessories

4" B/W Video Doorphone CSVIDP4101



Product Features

- 4" flat B/W CRT with high resolution and high contrast ratio
- Hand free intercom with memory.
- Unlock the electric-controlled door lock
- Rings or music indicates visitor's coming
- Monitor what happens out of door
- The outdoor station adapts 1/3 CCD camera to get clear and sharp image

Technical Specification

Indoor unit	
Power Supply	DC15V \pm 0.5V 1200MA
Power Consumption	Maximum 11W, standby 0.5W
Working temperature	0°C-50°C
CRT	4" B/W flat CRT
Doorbell Sound	Electronic Chime (Ding Dong). Or option others as users
Picture Element	Horizontal 350 lines, Vertical 380 lines
Max length of cable	20 meters using 0.65mm cable (or option longer as users)
Outdoor Unit	
Power Supply	DC12V, 0.5A
Power Consumption	Maximum 2.5W
Working temperature	-10°C-50°C
Minimum Illumination	0.01 Lux

DVRs

Cameras

DVR Cards

DVR Kits

Consumer Surveillance

Accessories

7" color Video Door Phone CSVIDP4203



Features

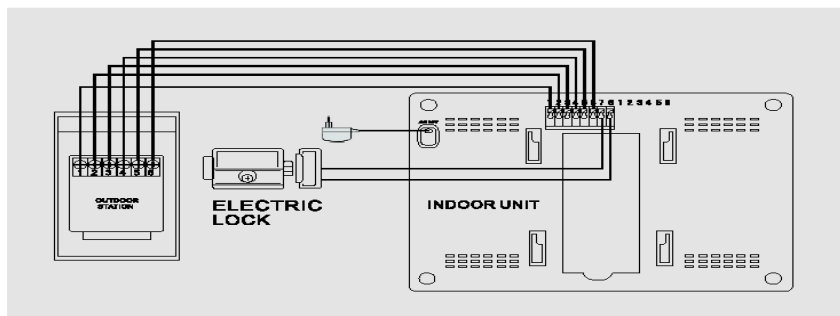
- Aluminum alloy panel of indoor unit, brand-new, elegant and fashionable
- Waterproof, wearable aluminum alloy outdoor station
- 7" TFT, nonradiative, energy saving and height definition picture and wide view
- Hand free intercommunication
- Unlock electric lock
- Monitor outside
- Eight melodies for choice
- volume, chroma and brightness could be adjusted
- Supply one transformer and 15M cable connection

Technical Specification

Description: 7" color video door phone

Parameter	Specification	Unit
Screen Size	7.0(16:9 diagonal)	Inch
Display Format	1440(H)×234(V)	dot
Active Area	154.08(H)×86.58(V)	mm
Dot Pitch	0.107(H)×0.370(V)	mm
Pixel Configuration	Stripe	
Outline Dimension	166(W)×100(H)×7.2(D)(typ.)	mm
Surface Treatment	Anti-Glare and Hard Coating	
weight	TBD±10	g

Diagram



DVRs

Cameras

DVR Cards

DVR Kits

Consumer Surveillance

Accessories

4" Digital Wireless Audio Door Phone CSVIDP4001



Product Features

- Digital 2.4GHz wireless door phone
- 200m transmission range in open air
- Matching Code Function
- AFH (Adaptive Frequency Hopping) Function
- Wireless Unlock Function
- Rechargeable Li- polymer Battery
- Low Voltage Detection Function
- Low Power Consumption
- Clear Sound

Technical Specification

Model	CSVIDP4001
Transmit Frequency	2.400-2.479GHz
Transmit Power	20dBm
Modulate Mode	GFSK
Select Frequency mode	AFH(Adaptive Frequency Hopping)
Transmit Power	20dBm
Receive Sensitivity	-100dBm
Transmit Distance	200M (open air)
Operating Temperature	0 - +40°
Storage Temperature	-40 - +85°
Low Battery detect	Power LED is flash fast
Unlock function Support	
Others Verify code function	
Charge Device Spec	
Input Voltage	DC 9V 300mA
Output Voltage	4.2V 500mA
CC Charge Current	500mA (max.)
Charge End Voltage	4.2V
Normal Charge Time	3 hours(for Indoor)/ 10 hours(for outdoor)
Charge Efficiency	≥75%
Operating Temperature	0 - +40°
Overcharge protection voltage	4.28V
Discharge protection voltage	3.2V

DVRs

Cameras

DVR Cards

DVR Kits

Consumer Surveillance

Accessories

Covert Speaker DVR

D2054MT



Product Features:

- USB 2.0 Digital Audio Video Record
- 4 Video & 1 Audio Channels input
- 4 Screen Display Modes
- MPEG4 Video Compression format
- Support Multi-channel Playback
- Multi Alarm Triggering method sensor
- Remote control Via Network
- 1 CH video real time.

Technical Specification

Model	D2054MT
Compression	MPEG4
Video in	With a camera itself & can connect additional 3 cameras (RCA)
Display rate	25 fps(PAL), 30fps(NTSC)
Recording rate(quad)	Max: 25fps(PAL),30fps(NTSC)---Quad
Recording rate(each)	PAL: 6.25fpsx4CH or 12.5fps*2CH or 12fpsx1CH NTSC: 7.5fpsx4CH or 15fps*2CH or 30fpsx1CH
Video resolution	PAL:704x576,352x288 NTSC:640x480,320x240
Recorder media	HDD,U disk, CD-RW
Record Mode	Motion/Schedule/Manual
Network	TCP/IP
Remote software	Support internet explorer web browser
System Requirement	
CPU	Intel P4 Celeron processor , minimum 1700MHz
Motherboard	Intel 845/865/915 series
HDD	80G minimum
RAM	256M minimum
VGA	GeForce2, GeForce4, FX5200, ATI Rage128
OS	Windows 2000(SP4 above)/2003(SP1 above)/XP(SP2 above)/Vista
DirectX	9.0
USB	2.0

DVRs

Cameras

DVR Cards

DVR Kits

Consumer Surveillance

Accessories

Mini DVR with Built-in 2.4"LCD Monitor

D2101MN



Product Features:

- Mini DVR with Built-in 2.4"LCD Monitor
- Same size as a credit card
- Built-in 2GB Mini SD card
- Rechargeable Li-ion Battery
- Built-in speaker
- Support camera in, AV out
- Backup through USB device.

Technical Specification

Model	D2101MN
Compression	MPEG4
Video in	1 CH
Video play	ASF(MPEG4),AVI(DIVX,XVID),3GP,MP4 format
Display rate	25 fps(PAL), 30fps(NTSC)
Recording rate	Max: 25fps(PAL),30fps(NTSC)
Video resolution	PAL:704x576,352x288 NTSC:640x480,320x240
Power in	5V,1A

DVRs

Cameras

DVR Cards

DVR Kits

Consumer Surveillance

Accessories

Wireless Portable DVR

D2124MA



Product Features:

- 2.4GHZ Wireless portable DVR monitor
- MPEG4 compression 30fps real time
- Built-in rechargeable Li-ion battery
- 1GB SD card included.

Technical Specification

Model	D2124MA
Receiver channels	4CH
CH frequency	CH1:2414MHZ; CH2:2432MHZ; CH3:2450MHZ; CH4:2468MHZ
Frequency property	2.4 GHZ
LCD	2.5" TFT-LCD
Video mode	NTSC/PAL
Resolution	640*480 (max)
Compression	MPEG4
Play file format	MPEG4
Audio frequency	20HZ ~ 20KHZ
Audio output	Stereo
Storage	128MB ~ 1GB
Storage media	SD/ MMC/ U disk
Language	English/ Chinese
Power consumption	DC 5V 1000mA
Internal battery	Li-ion battery 1800mAh
System Requirement	
OS	Windows 98,ME,2000,XP
Serial BUS	USB2.0, USB OTG2.0
Disk file format	FAT32

DVRs

Cameras

DVR Cards

DVR Kits

Consumer Surveillance

Accessories

USB Pen DVR

CSPEDV6001 (2GB)



Product Features:

- Use T-Flash card of 2GB
- Tiny size makes it ideal for a variety of uses
- It's great for use as a hidden camera, spy camera etc.
- Real time recording in AVI video format.
- Color video with voice lets you clearly see who's there & hear what they say.
- Place it up high or conceal it down low. With built-in rechargeable battery so there's no long cord for you to use.
- Playback video on the PC

Technical Specification

Model	CSPEDV6001
Image sensor	CMOS
Resolution	380TVL
card support	T-Flash 2GB
Video File Size	>500KB per minute
Recording Mode	Continuous recording until memory is full or manually off
Adaptor Type	USB adaptor charging cable
Battery Type	Lithium-ion
Battery use time	about 2 hours
Record Time	Up to 5 hours
Main frame	150mm*15mm*15mm
Mainframe weight	30g

DVRs

Cameras

DVR Cards

DVR Kits

Consumer Surveillance

Accessories

USB Pen DVR

CSPEDV6102 (4GB)



Product Features:

- Use T-Flash card of 4GB
- Tiny size makes it ideal for a variety of uses
- It's great for use as a hidden camera, spy camera etc.
- Real time recording in AVI video format.
- Color video with voice lets you clearly see who's there & hear what they say.
- Place it up high or conceal it down low. With built-in rechargeable battery so there's no long cord for you to use.
- Playback video on the PC

Technical Specification

Model	CSPEDV6102
Image sensor	CMOS
Resolution	380TVL
card support	T-Flash 4GB
Video File Size	>500KB per minute
Recording Mode	Continuous recording until memory is full or manually off
Adaptor Type	USB adaptor charging cable
Battery Type	Lithium-ion
Battery use time	about 2 hours
Record Time	Up to 5 hours
Main frame	150mm*15mm*15mm
Mainframe weight	30g

DVRs

Cameras

DVR Cards

DVR Kits

Consumer Surveillance

Accessories

USB Pen DVR

CSPEDV6103 (4GB)



Product Features:

- Portable covert camera
- Just like a pen
- Can match to our mini DVR

Technical Specification

Model	CSPEDV6103
Image Device	1/8" DSP Color CCD Camera Sensor
Video System	NTSC / PAL
Resolution	420 TVL
Min. Illumination	1 Lux / F 2.0
Lens	3.7mm pinhole lens, F2.8
Effective Pixels	640 x 480
S/N Ratio	More than 48 dB
Gamma	0.45
Electronic Shutter	1/50 ~ 1/125,000
Horizontal Sync Frequency	15.734 KHz(NTSC) / 15.625 (PAL)
Vertical Sync Frequency	60Hz(NTSC) / 50Hz(PAL)
Sync. System	Internal
Video Output	1 Vp-p / 75 Ohms
Storage Temp	-30° ~ 60°C
OperatingTemp	-10° ~ 45°C
Power Supply	DC3.6V ~ 6V (Standard)
Power Consumption	130mA

DVRs

Cameras

DVR Cards

DVR Kits

Consumer Surveillance

Accessories

Gas Leaking Detector

CSGASD2201



Features

- MCU processing
- High stability ,energy-saving sensor
- Wall Mounted
- Independent & Network Optional
- Power Input Method Optional
- Auto Reset After Alarm

Technical Specification

MODEL	CSGASD2201
Induced Gas	Natural Gas
Power Input	DC 12V
Buzzer Level	≥70dB/m
Alarm Density	15% LEL
Working Temperature	-10°C ~ +40°C
Working Humidity	≤90% RH
Alarm Density Error	±5% LEL
Alarm Mode	Flash & sound alarm /Shut off Gas Valve/ Network Alarm Signal
Power Consumed	≤5W
Size	120 * 70 * 44 mm

DVRs

Cameras

DVR Cards

DVR Kits

Consumer Surveillance

Accessories

Gas Leaking Detector

CSGASD2202



Features

- MCU processing
- High stability ,energy-saving sensor
- Wall Mounted
- Independent & Network Optional
- Power Input Method Optional
- Auto Reset After Alarm

Technical Specification

MODEL	CSGASD2202
Induced Gas	Natural Gas
Power Input	AC 220V 50Hz
Buzzer Level	≥70dB/m
Alarm Density	15% LEL
Working Temperature	-10°C ~ +40°C
Working Humidity	≤90% RH
Alarm Density Error	±5% LEL
Alarm Mode	Flash & sound alarm / Shut off Gas Valve/ Network Alarm Signal
Power Consumed	≤5W
Size	120 * 70 * 44 mm

DVRs

Cameras

DVR Cards

DVR Kits

Consumer Surveillance

Accessories

Glass Break Detector

CSGLBD1205



Features

- Built-in microprocessor
- Special apparent design
- Two-tone color display of LED
- Optional sensitivity
- Unique test mode
- Lockable alarm mode
- SMT technique of production
- Anti-EMI and anti-RF interference

Technical Specification

Model	CSGLBD1205
Operating voltage	9 ~ 16V DC
Static current	≤15mA (12V DC)
Alarm current	≤25mA
Detection range	High sensitivity: 9m, low sensitivity: 5m
Test time	≤60s
Operating temperature	-10°C ~ +80°C (14°F ~ 176°F)
Relay output	Normal closed, capability of contact point: 28VDC/80mA
Anti-tamper switch	Normal closed, capability of contact point: 28VDC/100mA
Size	92.0mm×67.0mm×26.4mm

DVRs

Cameras

DVR Cards

DVR Kits

Consumer Surveillance

Accessories

Indoor Siren

A1030AS



Features

- Piezo Strobe Siren

Technical Specification

Model	A1030AS
Operating Range	6-15
Rated current	300
Rated Voltage(VDC)	12
SPL	110±3
G.W.(kg)	14.5
QTY(pcs)	100
Dimension (mm)	580*240*450

DVRs

Cameras

DVR Cards

DVR Kits

Consumer Surveillance

Accessories

Smoke detector

A9300SS



Features

- Photoelectric Detector
- Light Labyrinth
- MCU Processing
- Network Output
- Manual Test & Reset Function
- Single sided fiberglass PCB
- Metal Shield with High Frequency immunity
- Unique Structure with dustproof, anti-fly, anti-light design

Technical Specification

Model	A9300SS
Power Input	DC 12V
Static Current	≤ 8mA
Alarm Current	≤35mA
Operating Temperature	-10°C to +50°C
Operating Humidity	95% RH
Alarm Output	N.O./N.C
Sensitivity	II or III level
Detecting Area	20 square meter
Size	Φ112 * 41mm

DVRs

Cameras

DVR Cards

DVR Kits

Consumer Surveillance

Accessories

Smoke detector

CSSMKD2001



Features

- Photoelectric Detector
- Light Labyrinth
- MCU Processing
- Network Output
- Manual Test & Reset Function
- Single sided fiberglass PCB
- Metal Shield with High Frequency immunity
- Unique Structure with dustproof, anti-fly, anti-light design

Technical Specification

Model	CSSMKD2001
Power Input	DC 12V
Static Current	≤ 8mA
Alarm Current	≤35mA
Operating Temperature	-10°C to +50°C
Operating Humidity	95% RH
Alarm Output	N.O./N.C
Sensitivity	II or III level
Detecting Area	20 square meter
Size	Φ112 * 41mm

DVRs

Cameras

DVR Cards

DVR Kits

Consumer Surveillance

Accessories



Features

- Doppler Effect + power analysis
- X-Band plane antenna
- Microwave detecting distance adjustable
- Auto temperature compensation, reducing false alarm
- Dynamic threshold adjustment technology with high interference immunity
- Look-down window design, avoiding dead angle
- Alarm output N.C./N.O. optional for different alarm controller
- Intelligence technology differing intruder from interference signal

Technical Specification

Model	CSPIRD2102
Microwave frequency	10.525G
Operating Voltage	DC 9-16V
Supply Current	≤30mA DC 12V
Working Temperature	-10° to +50°
Installation Method	wall mounted
Installation Height	about 2.2m
Detecting range	12*12m
Alarm Output	N.O./N.C
Anti Tamper Switch	Normal Close
Size	129.8*62.7*51.4mm

PIR detector

CSWPID2301-Wireless



Features

- Transmit infrared signal by wireless, convenient setting.
- LED ON/OFF optional
- Alarm delay optional
- Acoustic surface frequency stabilized for performance stabilization
- Function for checking low voltage with alarm

Technical Specification

Model	CSWPID2301
Working voltage	9VDC(using 6F22 battery)
Standby current	≤80μA(9V DC)
Working current	≤15mA(9V DC)
Sensor	dual low-noise pyro-electric infrared sensor
Working temperature	-10°C ~ +50°C(14°F ~ 122°F)
Installation method	Wall mounted
Installation height	optimal height 2.2m
Detecting range	12m
Detecting angle	110°
Size	114mmx60.5mmx41mm

DVRs

Cameras

DVR Cards

DVR Kits

Consumer Surveillance

Accessories

Wireless Surveillance

D2224MN + C3263VD + C2223VD



Features

- 380TV lines clear picture display
- Tiny size for discreet observation & portability
- Channel scan and channel skip for multi-camera usage
- 4-channel available to avoid interference
- 100m transmission distance without block
- Camera can meet IP54 standard for outdoor use (C2223VD)

DVRs

Cameras

DVR Cards

DVR Kits

Consumer Surveillance

Accessories

Technical Specification

Wireless DVR-D2224MN	
Power Supply	DC 9-12V 300mA
Consumption Current	240mA
Video Output Level	1.0Vp-p,75ohm
Dimensions	105mm x 77mm x 23mm
Weight	100g
Camera-C3263VD	
Transmission Frequency	2,400MHz~2,483MHz 4CH*
Transmission Distance	50-100m (Without Block)
Operating Temperature	(-10°C+50°C/+14°F~+122°F)
Storage Temperature	(-20°C+60°C/-4°F~+140°F)
Operating Humidity	85%RH
Image Sensor	1/3" color CMOS
CMOS Total Pixels	628 x 582 (PAL)/ 510 x 492 (NTSC)
Horizontal Resolution	380 TV Lines
Minimum Illumination	1.0Lux/F1.2
Power Supply	DC 5-8V 300mA
Transmission Power	10mW (CE) / 2mW (FCC)
Consumption Current	80mA (Max.)
Dimensions	46(φ)mm x 127mm (Main Body)
Weight	20g (Man body)
Lens	3.6mm
Camera-C2223VD	
TV System	PAL or NTSC
Resolution	360 horizontal TV Lines
Signal/Noise Ratio	48dB
High-Speed Electronic Shutter	1/60 - 1/15,000 sec
Image Sensor	1/3"CMOS
Min. Illumination	0.5 lux
Overall Size	3.25"Lx1.2"Diameter (antenna not included)
Frequency Range	2.41- 2.47 GHz
Video Signal/Noise Ratio	48dB
Audio Signal/Noise Ratio	45dB
Modulation	FM
Channel Selection	Electronic tuning with PLL
Case Finish	Metal Aluminum case, suited for indoor or outdoor use

DVRs

Cameras

DVR Cards

DVR Kits

Consumer Surveillance

Accessories



Smile Security and Surveillance Pvt. Ltd.



Smile Security and Surveillance Pvt. Ltd.

Smile Security and Surveillance Pvt. Ltd.

#32, Seshadri Road (Suprabhatha Complex), Bangalore -560 009. (INDIA)

Tel : Regd. Office- +91- 80- 4151 8990

Sales Office- +91- 80- 41131001

Fax: +91- 80- 2557 2603, Email: info@sssl.co.in Website: www.sssl.co.in