

DVD Player and Spa Installation Guide



**IT IS IMPORTANT THAT YOU READ AND FOLLOW
THIS INSTRUCTIONS.
PLEASE KEEP THIS MANUAL IN A SAFE PLACE**



DO NOT PLUG ANY POWER SUPPLY WHEN INSTALLING THE SPA

When using electrical appliances, basic safety precautions should always be followed to reduce the risk of fire, electric shock, and injury to persons, including the following:

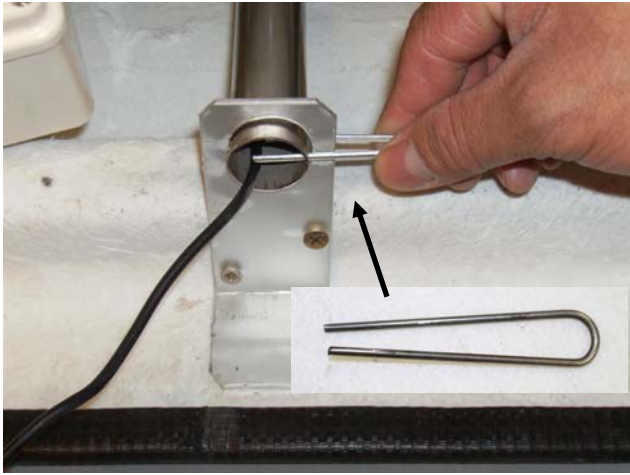
- Read all instructions before using appliance.
- To avoid fire and shock hazard, plug the appliance directly into a 120V AC electrical outlet.
- Keep the cord out of heavy traffic area. To avoid fire hazard NEVER put the cord under rugs, near heat generating devices, such as radiators, stoves or heaters.
- To protect against electrical hazards DO NOT immerse in water or other liquids. Do not use near water.
- Close supervision is necessary when any appliance is used by or near children or disabled persons.
- Always unplug the Mini Spa before moving it.
- DO NOT drop or insert any object into any openings.
- Do not operate any appliance with a damaged cord or plug, if motor fan fails to rotate, after the appliance malfunctions, or if it has been dropped or damaged in any manner. Return appliance to manufacturer for examination, electrical or mechanical adjustment or repair.
- Any other use not recommended by the manufacturer may cause fire, electrical shock or injury to persons.
- NEVER use outdoors.
- Keep unit away from heated surfaces and open flames.
- DO NOT attempt to repair or adjust any electrical or mechanical functions on this unit. Doing so will void the warranty. The inside of the unit contains no user serviceable parts. All servicing should be performed by qualified personnel only.
- WARNING: To reduce the risk of fire or electrical shock, DO NOT use this Mini Spa with any solid-state speed control device.
- DO NOT place anything on top of the unit.

After reading this owner's guide, if you have any questions or comments, Please call 817- 633 - 1080 or write to our Customer Service Department at 1132 107th Street, Arlington, TX 76011 – USA or visit our website at www.luraco.com

PLEASE READ AND SAVE THESE IMPORTANT SAFETY INSTRUCTIONS

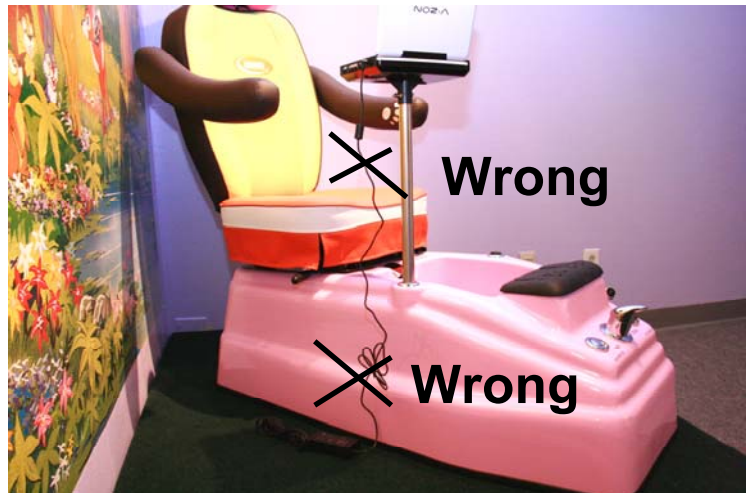
A/ DVD Installation

Please read the Installation Guide before installing the Spa
(Xin vui lòng xem kỹ manual trước khi lắp ráp Min Spa)



You have to use the U-shape lock to lock the DVD pole to the tub, otherwise the pole will cut the power cord of DVD player.

Quý vị phải dùng cái U - lock để lock cái cọc DVD lại với bồn. Nếu không cái cọc sẽ cắt dây điện của DVD player.



To play DVD continuously, please plug the power adapter of DVD player direct to the outlet on the wall as shown in picture.

Để máy DVD khi nào cũng có điện để chiếu phim thì DVD adapter nên cắm thẳng vào outlet trong tường như hình bên.

First of all you need to decide which side of the Spa Chair (left or right) the DVD Player will be installed. If the Spa is accessed from the left, then the DVD player should be installed on the right, and vice versa.

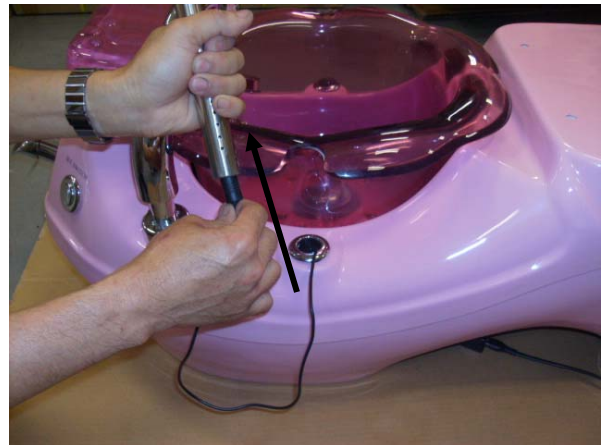
Trước hết quý khách phải xác định gắn máy DVD vào bên trái hay bên phải của ghế Spa. Thông thường nếu lối đi vào ghế bên trái thì nên gắn DVD vào bên phải và ngược lại để tránh vấn đề vướng khi ra vào ghế.

Step 1



Slip the DVD power cord through the holders.
(Luồn sợi dây điện của máy DVD qua hai lỗ này))

Step 2a



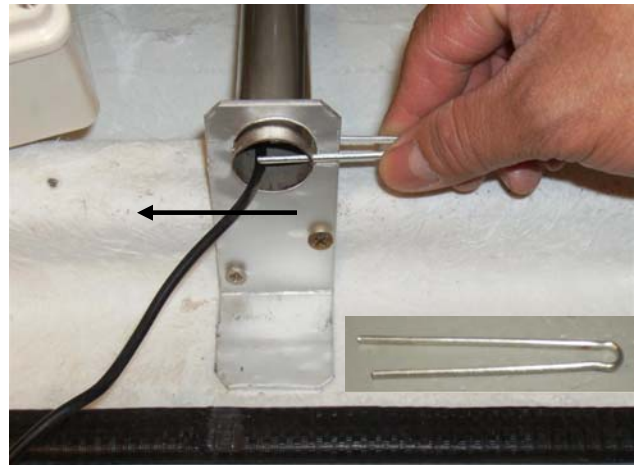
Slip the DVD power cord through the metal pole.
(Luồn sợi dây điện của máy DVD qua ống in-
nox này)

Step 2b



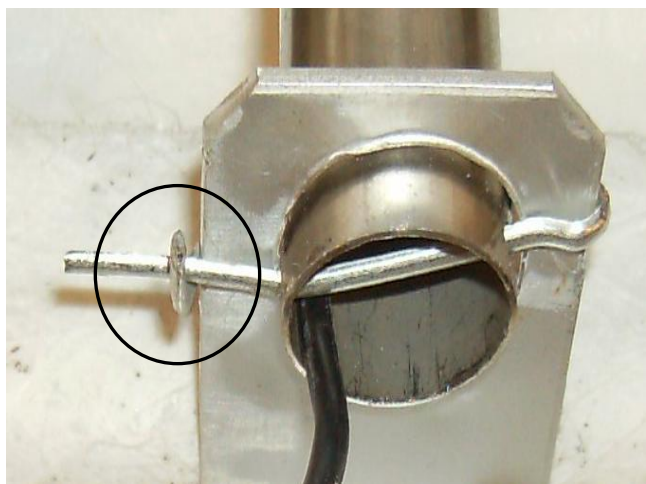
Insert the metal pole into the holders.
(Cắm ống in-nox vào lỗ như trong hình bên)

Step 3



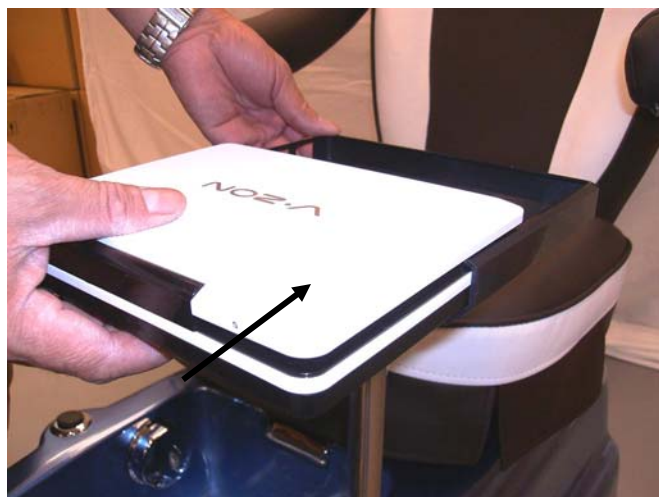
Lock the metal pole using the pin as shown in picture. (Khóa ống in-nox lại bằng cái pin như trong hình)

Step 4



Use pliers to twist and lock the pin. Make sure the pole is locked well and cannot turn. (Dùng cái kềm để khóa cái pin lại như trong hình. Phải lock kỹ để ống inox không được xoay)

Step 6



Install the DVD player by sliding it into the tray. Make sure the audio control is in the open cut in the tray. (Gắn máy DVD vào khay nhựa bằng cách chui vào. Chú ý phía volume control là phía có lỗ cắt ở khay nhựa)

Step 5



Install DVD holder tray and lock it into the metal pole. (Lắp DVD tray và dùng cái pin khác để lock lại)

Step 7



Plug the power cord into the DVD Player. This power cord will lock the DVD Player to the tray. (Gắn dây điện của máy DVD vào. Dây điện này sẽ khóa máy DVD lại với cái khay nhựa)

It is recommended that the power adapter of DVD Player is plugged to the wall outlet or the power strip that is connected directly to the wall outlet in order to play the DVD continuously. Do not plug it to the air switch controlled power box.

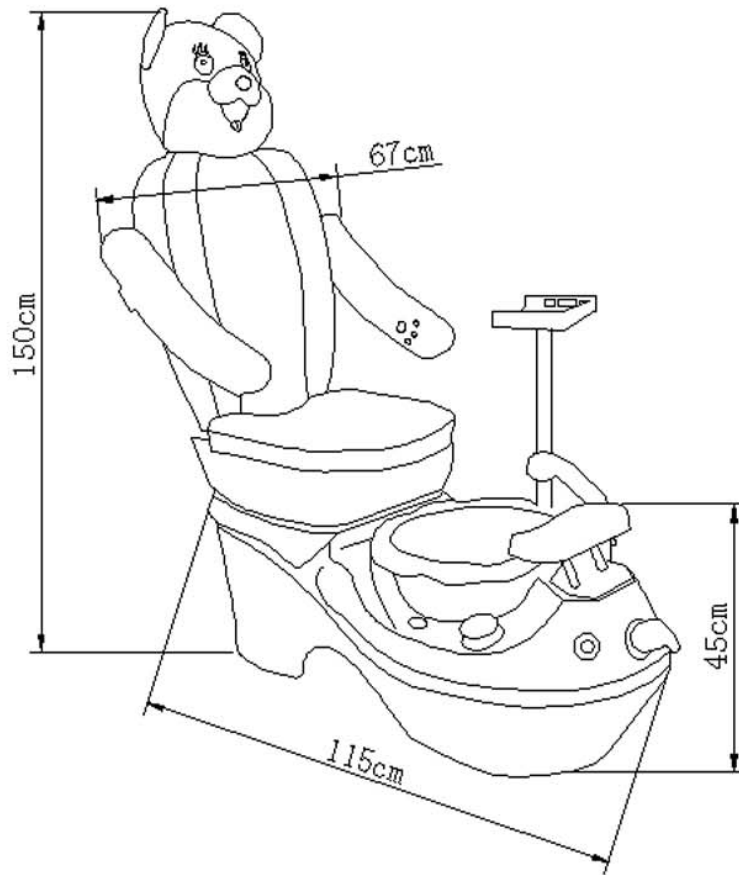
Quý vị nên cắm power adapter của DVD Player thẳng vào ổ cắm trong tường hay vào một dây điện được cắm thẳng vào trong tường để play DVD lâu dài. Nếu quý vị cắm nó vào ổ cắm được điều khiển bởi Air thì battery không được nạp đủ điện.

DVD Player Overall View



B/ Chair Installation

B/ Chair Installation



SPA 981 PACKING SIZE: Base: 117*53*48CM
Chair: 74*34*50CM

SPA 981 NET WEIGHT: Base: 34KG
Chair: 16KG

TUB CAPACITY: 2-3 GALLONS

WATER SOURCE : $\frac{1}{2}$ PIPE THREAD H&C

ELECTRICAL: 110V 10A 60HZ

Overflow safety & Drain Valve

Footrest



Pump Air Switch

Air Switch reserves for Drain pump

Hot-Cold water Mixer



Shower head



Cold Hot Drain

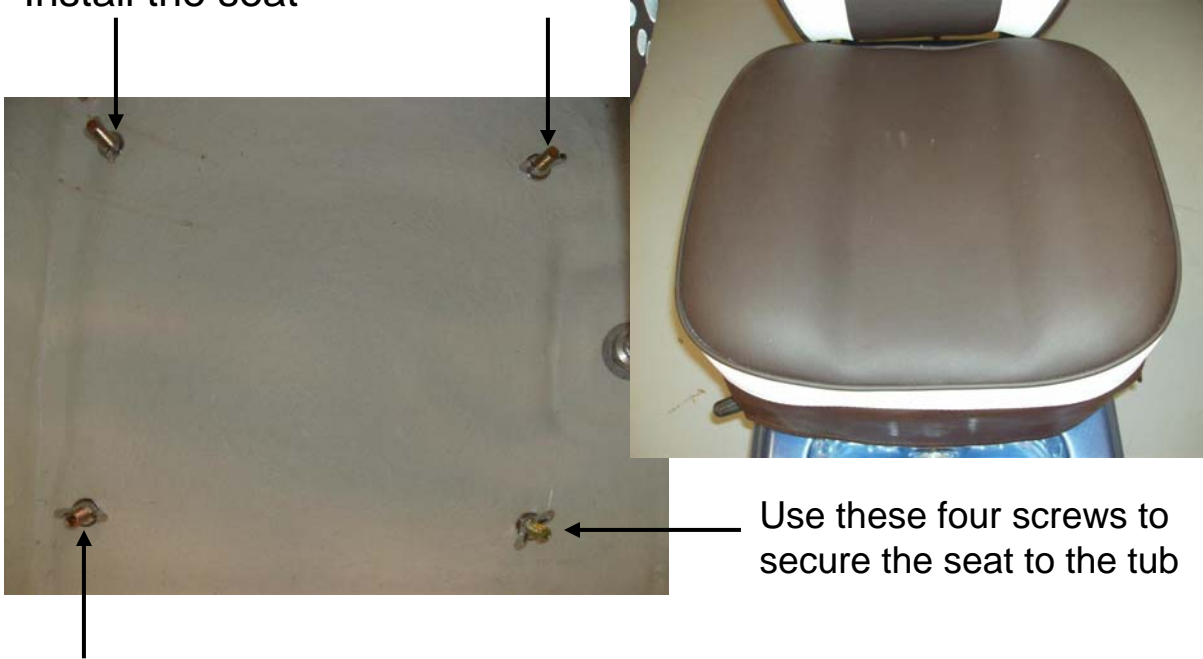


Lift this handle to slide the seat forward or backward



Step 1

Install the seat



Step 2

Install the back



Use these three screws to install the back chair

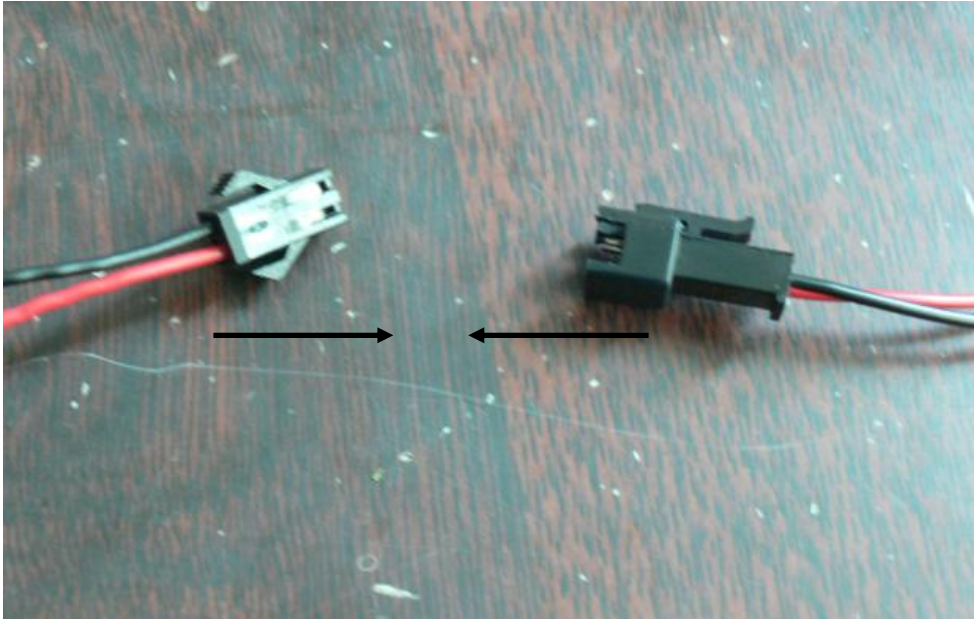
Note



The default angle is good enough. But if new adjustment is needed, then rotate this beam to desire angle of the back.



c/ Vibration Massager installation



Connect these connectors to transfer the power from the back to the seat
(Nối hai dây điện này lại để chuyển điện của vibration từ phần dựa (back) đến phần ngồi (seat))



Plug the vibration power adapter to the outlet as labeled on the black box
(Cắm adapter của vibration vào ổ cắm đã được label sẵn như trên)

Floor Drain



Salons which have Wall Drain must use a Drain Pump
The Drain Pump is NOT included in this package. You
can contact us or local Nail Suppliers to purchase one.

Wall Drain

Discharge Pump Installation



The discharge pump package includes:
1 Discharge pump, 1 Timer Power Jack Air Controlled,
1 five-foot clear air hose, 1 Pipe adapter. The air switch
has already installed in the tub. Installer needs a Power