

6. Attention

1. This product is non-waterproof, please avoid the sun and rain. Put it in a waterproof box if install outdoor.
2. The condition of radiation will affect the working life of controller, please install the product in a good radiation condition.
3. Please check if the output voltage of the LED power supply comply with the voltage range of the product.
4. This product is a high current device, please ensure a solid connection in order to avoid poor contact to damage parts and trigger fires.
5. Ensure all wire connection are correct before power debugging, which is to avoid lamps to be burnt because of wrong connection.
6. All the switching power supply must be well grounded, so as not to affect the working life of LED.
7. Please do not maintain it by yourself if any fault, please contact your supplier if any question.

7. After-sales service

This product is 1 year free warranty, lifelong technical maintenance. The warranty excludes improper connection to power supply, overload working, etc. Human damages and force majeure factors.

Repair or replacement as provided under this warranty is the exclusive remedy of the customer. We shall not be liable for any incidental or consequential damages for breach of any stipulation in this warranty.

For the sake of the convenience to repair, Please don't tear up or obliterate the label on product.

This manual is only apply to this model, any update is subject to change without prior notice.

Constant Voltage LED Dimmer



User Manual

JBP-LC-600 is an intelligent dimmer specially designed for LED lighting, it adopted the most advanced PWM (pulse-width-modulation) digital brightness-adjusting technology that enables you adjust the brightness with the infinite knob and also can adjust the brightness far away with the IR wireless remote control. It is suitable for installation of commercial and household 86-style socket, you can install it visibly outside the wall or invisibly inside the wall, it can meet different brightness requirements at different time with the dimmer, also it can extend the LED life tenure and save energy, suitable to dim hi-power or low-power LED lamps.

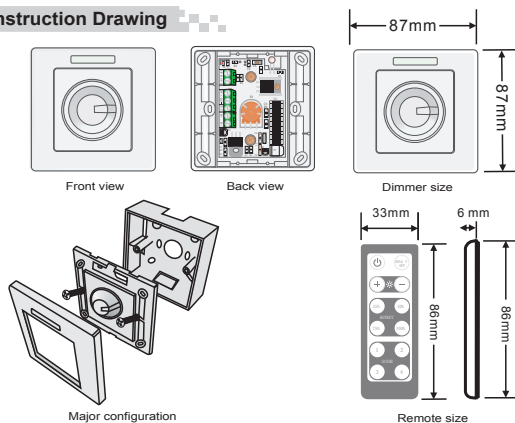
1. Technical Specs

JBP-LC-600	
Input voltage	DC12V~DC48V
Output signal	Constant voltage
Max load current	6A
Max output power	75W/150W/220W280W (12V/24V/36V/48V)
Dimming range	0-100%
Grey scale	256 levels
Working Temperature	-30℃-55℃
Switch Dimension	L87×W87(mm)
Remoter Dimension	L86×W33(mm)
Packaging Dimension	L96×W91×H61(mm)
Weight (G.W)	200g

2. Features

1. 0~100% brightness adjust, infinite knob style dimming+ wireless IR remote dimming;
2. 256 grey scales, soft & smoothly, without flicker;
3. PWM digital dimming+ programs without current surge, longest life tenure of LED;
4. 25%、50%、75%、100% 4 shortcuts of brightness options available;
5. 4 DIY modes, with Fluorescent Indicator & delay off button, users friendly;
6. When actual power of dimmer exceeds load capability, can add extra power repeater to expand power output;
7. DMX, constant current & DMX versions available, convenient to control different LED illumination products with different circuits;

3. Construction Drawing

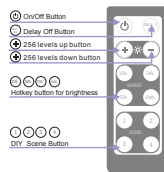


4. Operation instructions

1. About the button:



Dimmer knob instruction



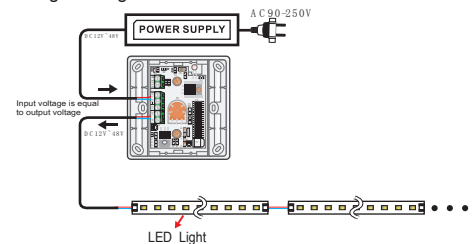
IR remote instruction

2. Detailed functions of IR Remote Button:

Sign	Button	Description
	ON / OFF	on / off key: on/off the LED lamp Any button can start the LED lamp at off status
	DELAY OFF	Delay off button: Press this key, it will wait 30 seconds before turning off the light automatically;
	BRT + BRT -	Mode + key / - key: These two buttons can increase or decrease the brightness, total 256 levels of brightness, continually pressing it, you can continually change the brightness;
	HOTKEY	Brightness keyboard shortcuts: Press these four keys can select different brightness you want directly & immediately;
	SCENE	DIY mode button: Total 4 keys, continually press it for 3 seconds, the dimmer's indicated light flick several times, meaning the current brightness was automatically saved, you can enter this mode by just press it once.

5. Connecting scheme

1. Connecting LED lights:



2. Offer PWM dimming signal to drive other equipment:

