



LS6001A Additional Handset

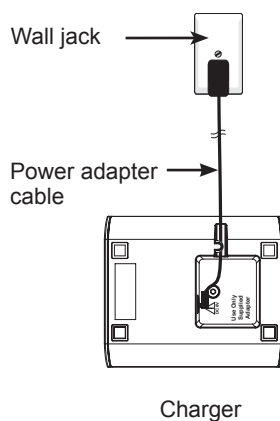
Quick Start Guide

Package Contents

- LS6001A handset
- Handset charger and power adapter
- NiMH rechargeable battery pack

Connect the Charger

1. Plug the power adapter cable into the charger, plug the other end into the wall jack and switch the power on.

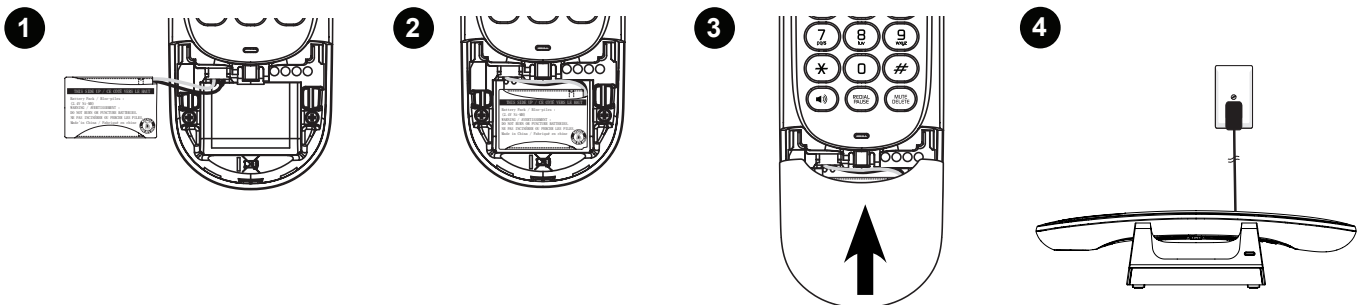


NOTES

- Ensure the power cord is fed through the slot on the charger so the unit sits flush with the desk.
- The position in which you place the charger could have an effect on the range and performance of your **LS6001A** handset.

Install the battery

1. Slide open the battery compartment cover. Place the battery pack into the battery compartment, with the battery connector plugged in, as shown.
2. Place the rechargeable battery and the wires inside the battery compartment.
3. Slide the battery compartment cover back until it clicks into place.
4. Place the handset on the base charging cradle to charge for at least 14 hours. A beep indicates that the handset is properly placed on the base.



NOTES

- This handset requires specific NiMH rechargeable batteries for use.
- If you do not use the handset for a long time, disconnect and remove the batteries to prevent possible leakage.

Registering an Additional Handset

The **LS6001A** additional handset must be registered to the **LS6191A** telephone base before use. When first purchased, each expansion handset alternately shows **To register HS...** and **...see manual**. The new handset should be charged without interruption for at least 30 minutes before registering it to the telephone base. To register the additional handset to your **LS6191A**, follow the instructions below.

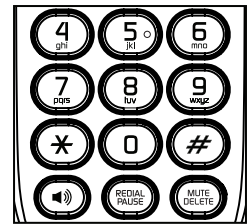
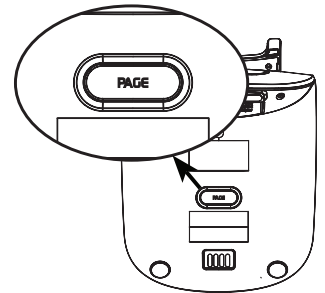
To register a handset:

1. At the bottom of the telephone base, press and hold **PAGE** for about four seconds until it shows **Registering...**
2. On the cordless handset, press **#** then it shows **Registering...** Both the telephone base and cordless handset show **Registered** and you hear a beep when the registration process completes. The registration process takes about 60 seconds to complete.

If registration fails, the handset displays **Failed**. Please start again from Step 1 above.

NOTES

- You cannot register a handset if any other system handset is in use.
- If you have not set the date and time for the telephone system, the handset will prompt you to set the date and time after it is registered to the base. To skip setting, press **CANCEL**.



If you have any difficulty with the operations of LS6001A handset or LS6191A base station, refer to your LS6191A User's manual.

For technical support, please call VTech Technical Inquiry Hotline.

© 2015 VTech Telecommunications Ltd. All Rights Reserved.