



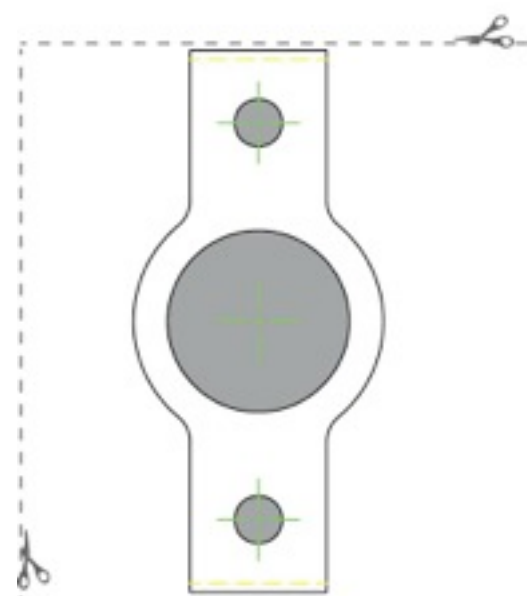
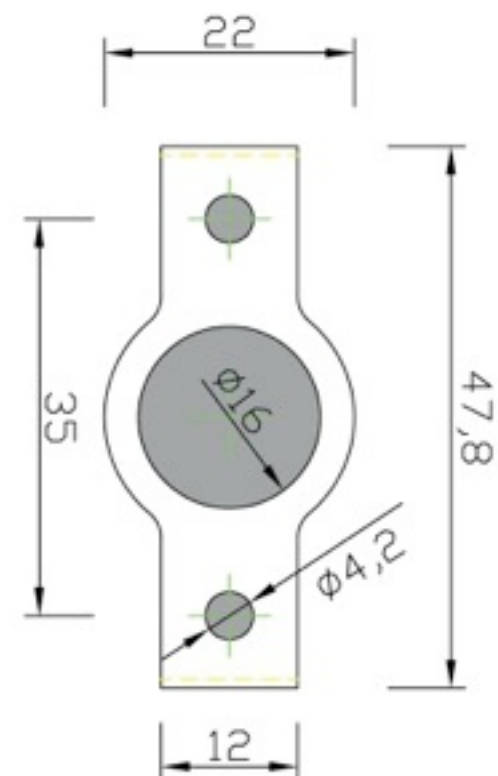
**MR16 Ceiling/Recessed  
Spotlight**  
USER GUIDE  
Ver. 2

## INSTALLATION PRECAUTIONS

- Power off the device before installation or disassembly to avoid electric shock.
- MR16 SPOTLIGHT- Down Lights Type:  
Make a hole of around 75mm diameter to install downlight. Adjustment based on site condition.
- MR16 SPOTLIGHT- Ceiling Lights Type:  
See Installation diagram for diameter of opening the holes for installing ceiling light.
- Please install on the board of at least 9mm thickness for safety reason.
- Please install the lamp as instructed to prevent risk of accidents.
- Please add supplementing steel wires to hold the body of lamp for safety reason.
- Please ensure power cord connection and lamp embedment after installation.
- DO NOT install additional transformer, as it may cause unexpected danger.
- Professional technician is required for installation.

## USE PRECAUTIONS

- Not suitable for dimmers , electronics switches or remote controls.
- DO NOT scratch the lens. The light source may get blurred.
- DO NOT disassemble, modify or damage the lamp as your warranty may be voided.
- Please watch out for metal clamps, as it may scratches.
- Keep the lamp away from flammable objects.
- Power off the lamp before installation or disassembling to avoid electric shock.
- DO NOT touch the lamp when it is in use or still hot right after powered off.
- Due to thermal emission, it is perfectly normal that the lamp gets warm when it is in use.
- Product color in picture may differ from actual one on account of photographic factors.
- Life cycle of the product may be shortened due to improper environment and usage.
- The waterproof feature is for MR16 IP65 model ONLY. DO NOT immerse in water and near by high temperature fire source.
- DO NOT look at the lamp directly for extended period of time, as it may cause glare and eye injury.



- Check the lamp regularly for normal operation or any malfunction.
- If a malfunction can not be solved, please contact the dealer or EVERGREEN Optronics for technical support. DO NOT disassemble the light source or switch as the warranty may be voided.

- ※ Evergreen Optronics company shall not be held liable for any damage caused due to inappropriate use of this product.
- ※ The actual specifications of the product may vary (within  $\pm 10\%$  of anticipated performance). Evergreen Optronics reserves the right to modify them. This user manual is only intended as a reference.