

(10) **Patent No.:** **US 6,765,558 B1**
(45) **Date of Patent:** **Jul. 20, 2004**

- ## OTHER PUBLICATIONS

Setup and User Manual Hampshire TSHARC-8 Touch
Screen Controller Board (Revision 1.6) pp. 3 and 7.*
Setup and User Manual Hampshire TSHARC-8 Touch
Screen Controller Board (Revision 1.6) pp. 3 and 7.*
Prentice Hall's Illustrated Dictionary of Computing, 2nd Ed.,
1995, p. 59.
The New IEEE Standard Dictionary of Electrical and Elec-
tronics Terms, 5th Ed. 1993, p. 1051.

* cited by examiner

Primary Examiner—Matthew C. Bella

Assistant Examiner—Hau Nguyen

(74) *Attorney, Agent, or Firm*—Quarles & Brady;
Alexander M. Gerasimow

(57) **ABSTRACT**

A method of determining a type of touch plane operator input device comprises sensing the impedance across first and second terminals of a touch plane operator input device to distinguish the touch plane operator input device as being one of at least two different types of touch plane operator input devices. A method of processing an input from a touch plane operator input device comprises determining a first location of a first touch on the touch plane operator input device; determining a second location of a second touch on the touch plane operator input device; comparing the first and second locations to obtain an indication of an amount of difference between the first and second locations; and determining whether the indication of the amount of difference exceeds a predetermined amount. These steps are performed by discrete logic circuitry that provides an event notification to a microprocessor when the indication of the amount of difference exceeds the predetermined amount. An interface circuit for a touch plane operator input device comprises a digital signal processor that includes a data processing path along which data from a touch plane operator input device passes while being processed by the digital signal processor. The interface circuit is capable of processing data from first and second different types of touch plane operator input devices. The data path is a common data processing path that is the same for input data for both of the first and second types of touch plane operator input devices.

(56) **References Cited**

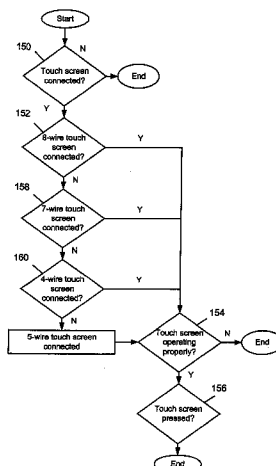
U.S. PATENT DOCUMENTS

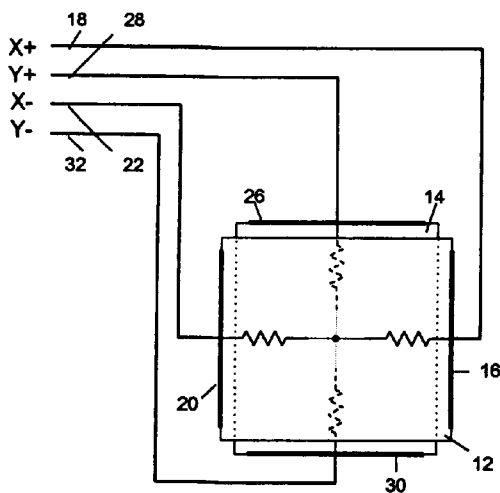
4,413,314	A	11/1983	Slater et al.
4,581,483	A	4/1986	Ralston
4,908,620	A	3/1990	Fujisawa
4,942,514	A	7/1990	Myiagaki et al.
5,014,051	A	5/1991	Lippmann et al.
5,283,558	A	2/1994	Chan
5,376,947	A	12/1994	Kuroda
5,867,665	A	2/1999	Butman et al.
5,880,411	*	3/1999	Gillespie et al.
6,037,930	A	3/2000	Wolfe et al.
6,088,628	A	7/2000	Watanabe et al.
6,163,313	A	12/2000	Aroyan et al.
6,229,472	B1	5/2001	Nishida
6,278,444	B1	* 8/2001	Wilson et al.
6,292,181	B1	* 9/2001	Banerjee et al.
6,373,475	B1	* 4/2002	Challis
6,445,383	B1	9/2002	Chambers et al.

FOREIGN PATENT DOCUMENTS

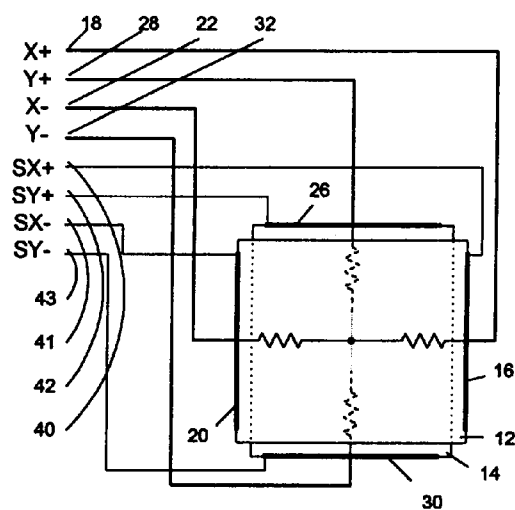
WO	WO 98/49650 A1	11/1998	
WO	WO 98/49650	* 11/1998 G06K/11/12

22 Claims, 11 Drawing Sheets

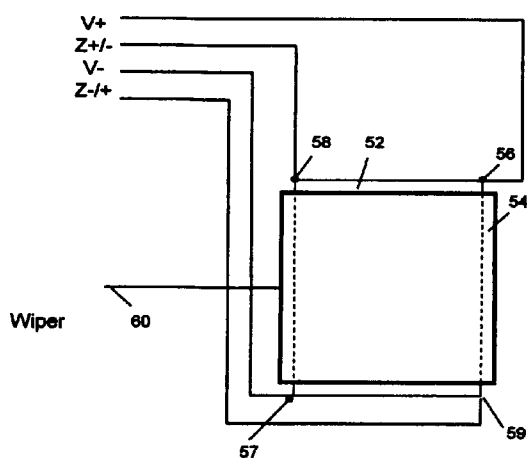




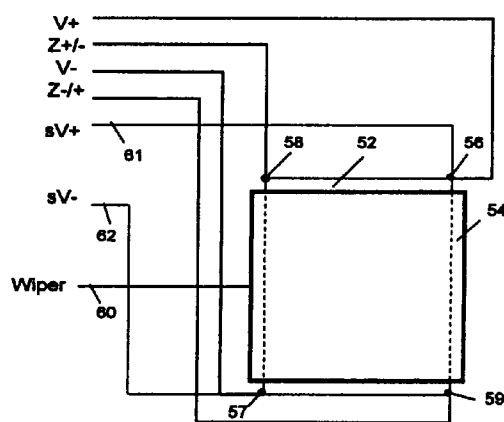
"Prior Art"
FIG. 1A



"Prior Art"
FIG. 1B



"Prior Art"
FIG. 1C



"Prior Art"
FIG. 1D

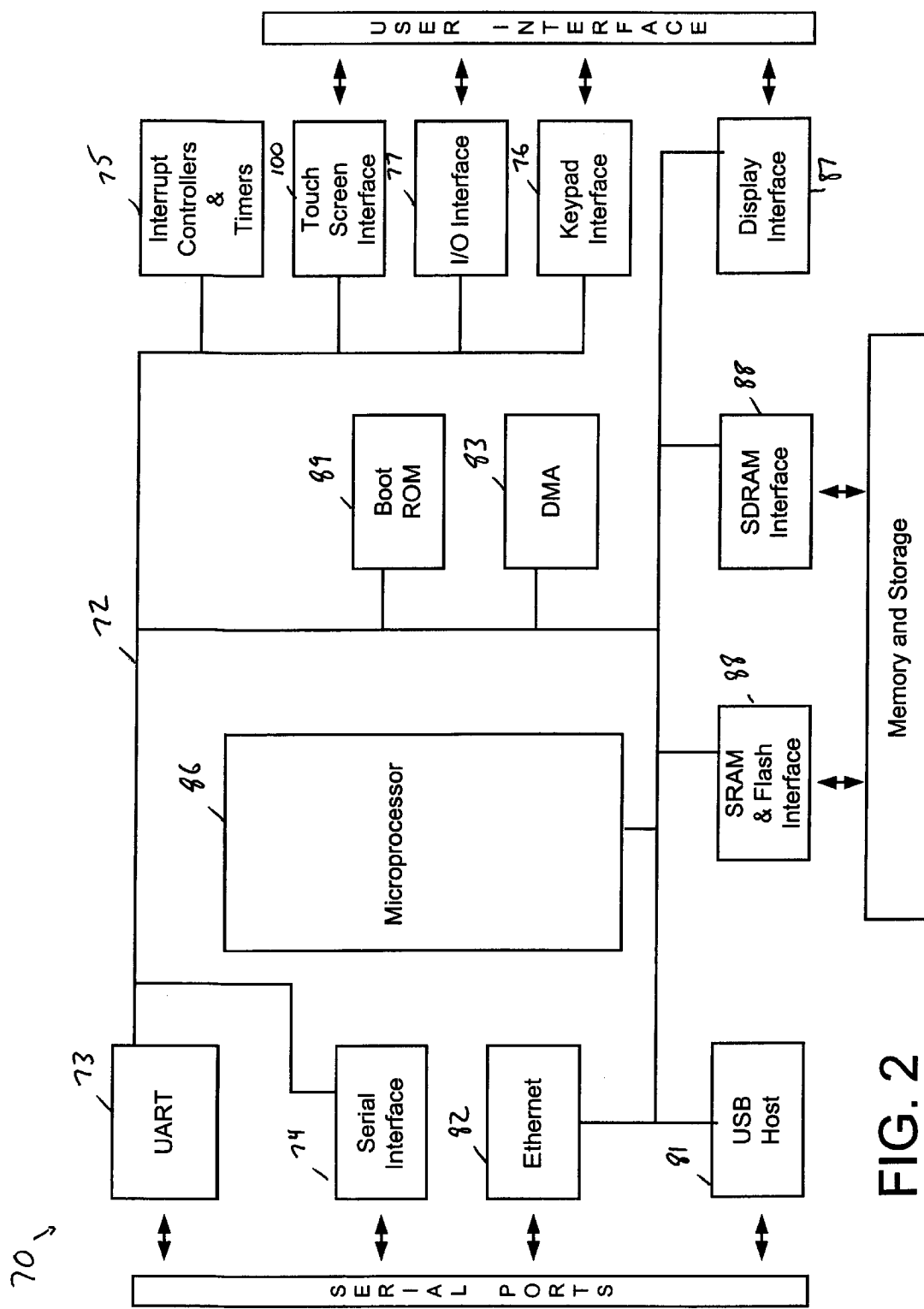


FIG. 2

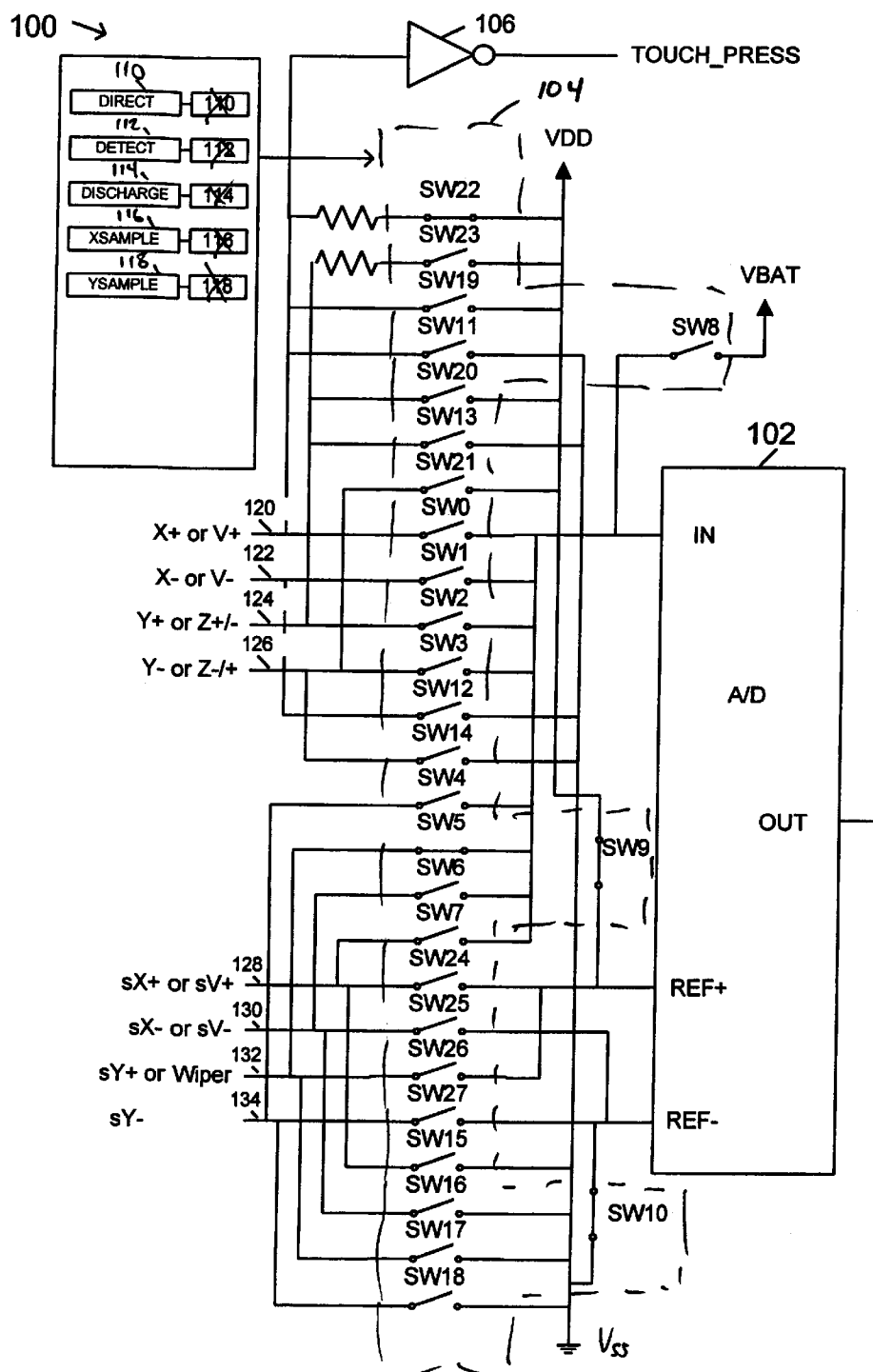


FIG. 3

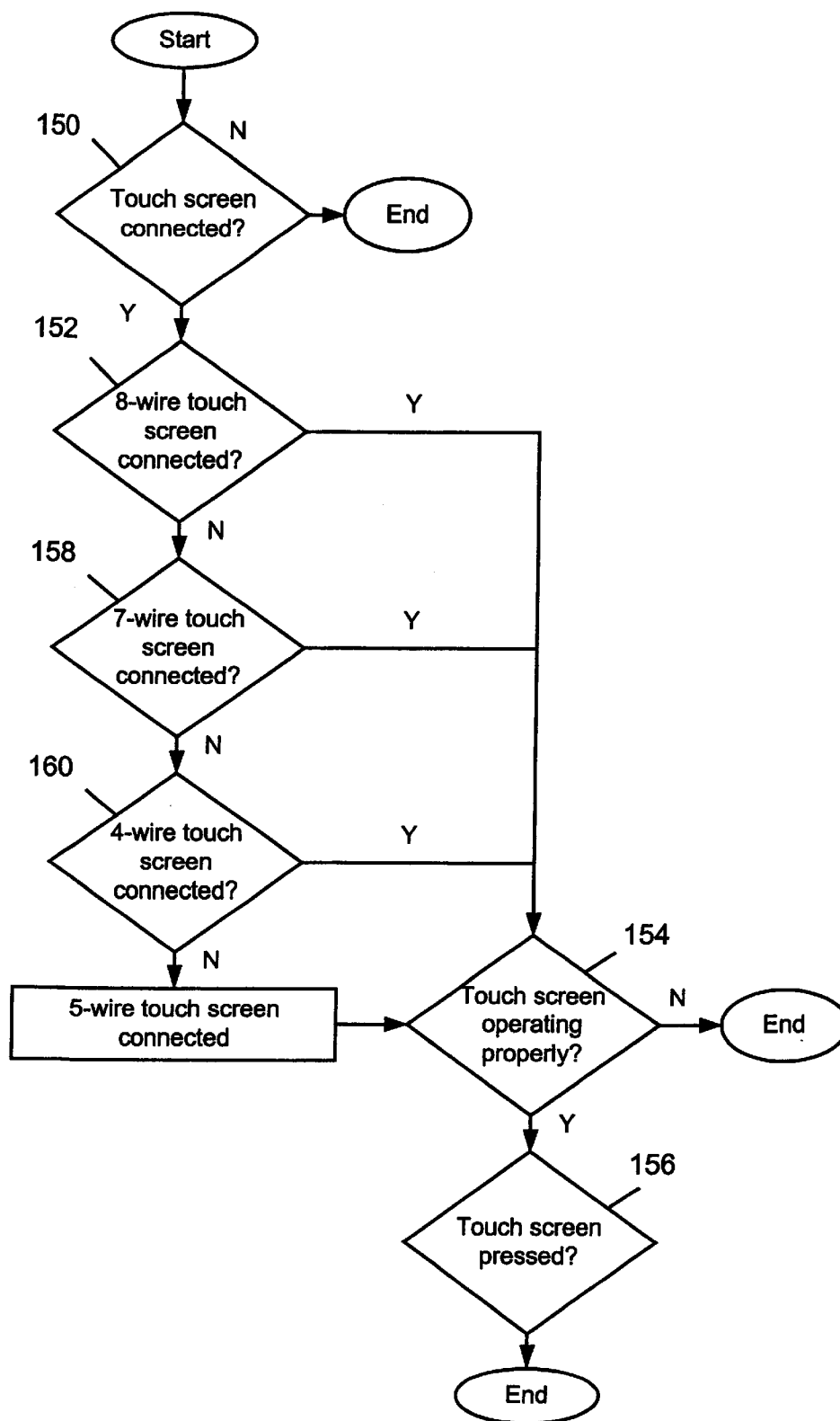


FIG. 4A

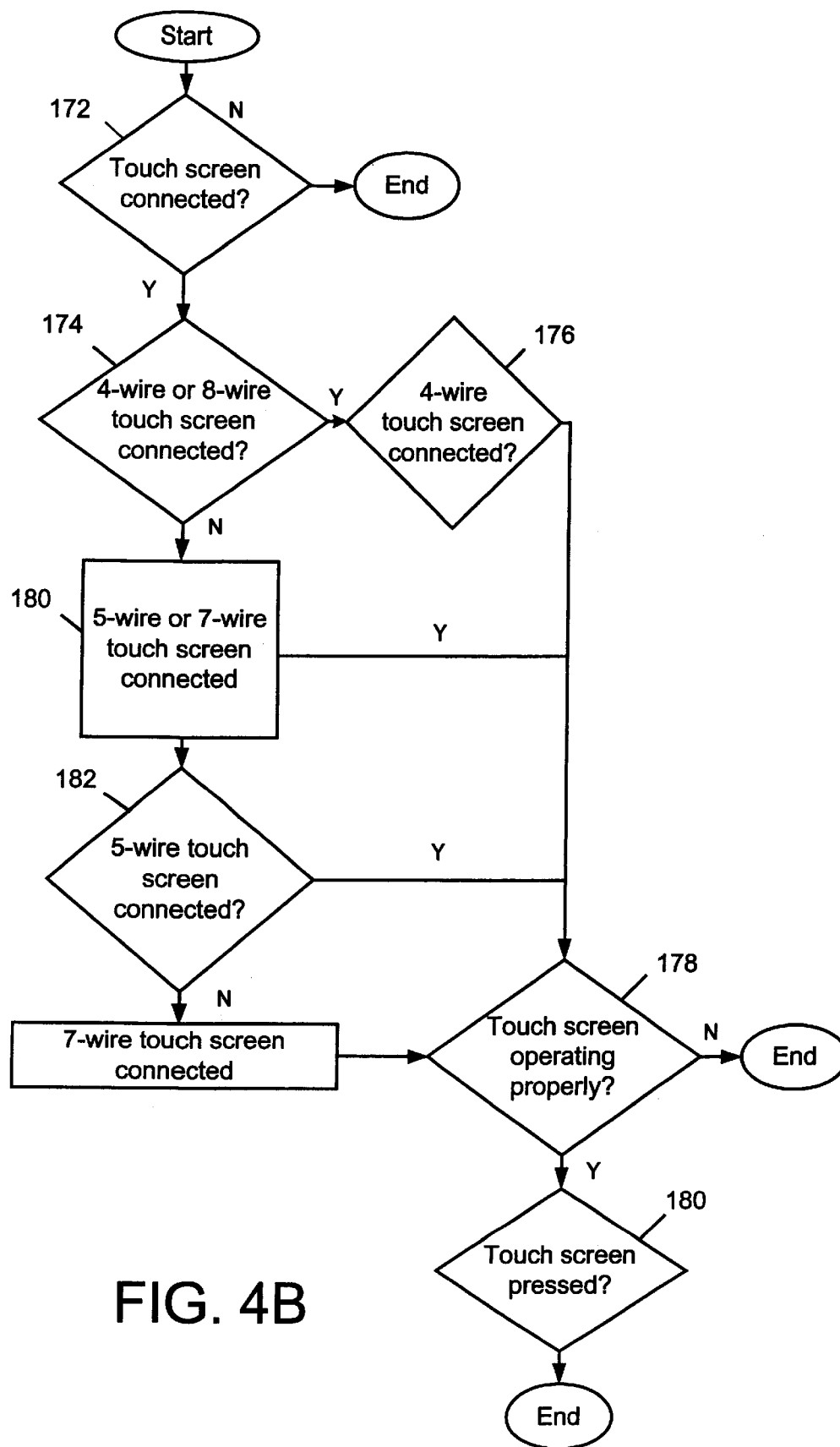


FIG. 4B

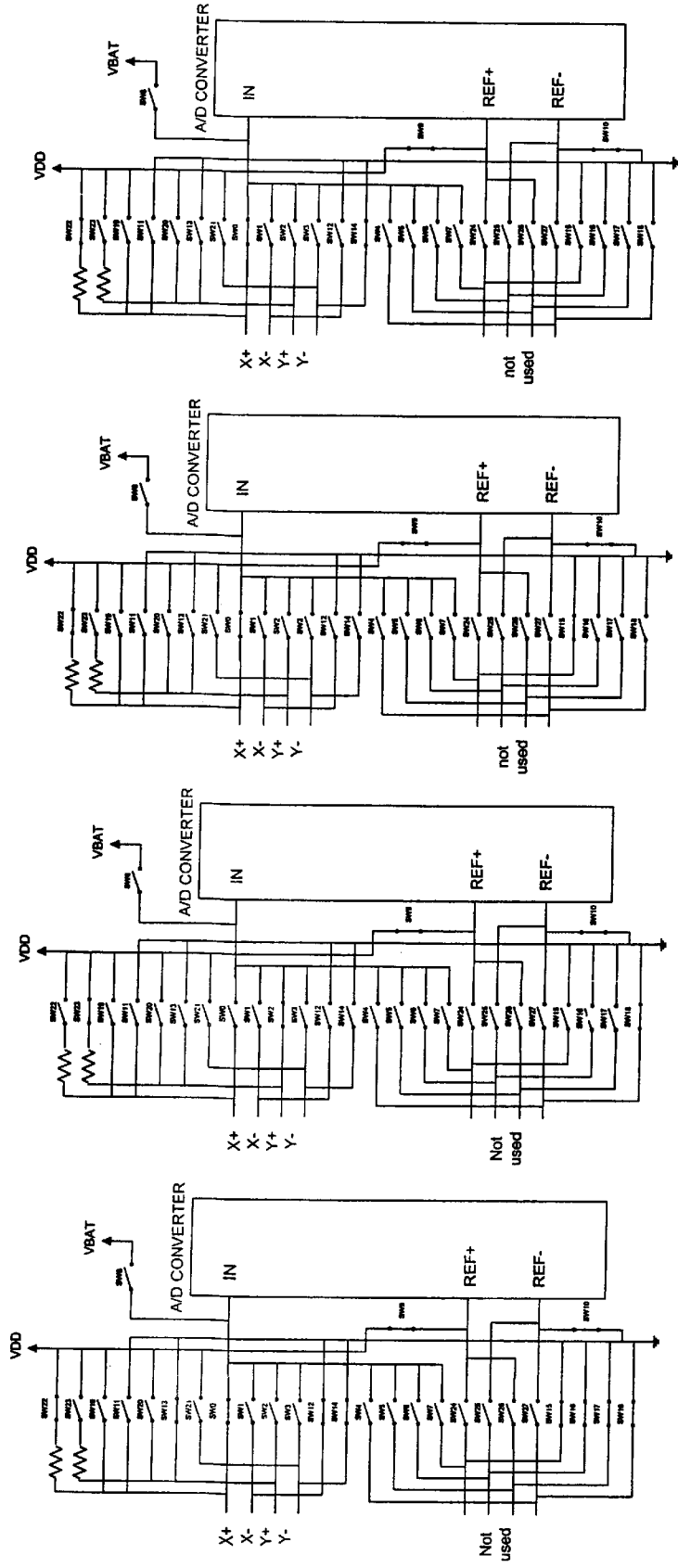


FIG. 5A

FIG. 5B

FIG. 5C

FIG. 5D

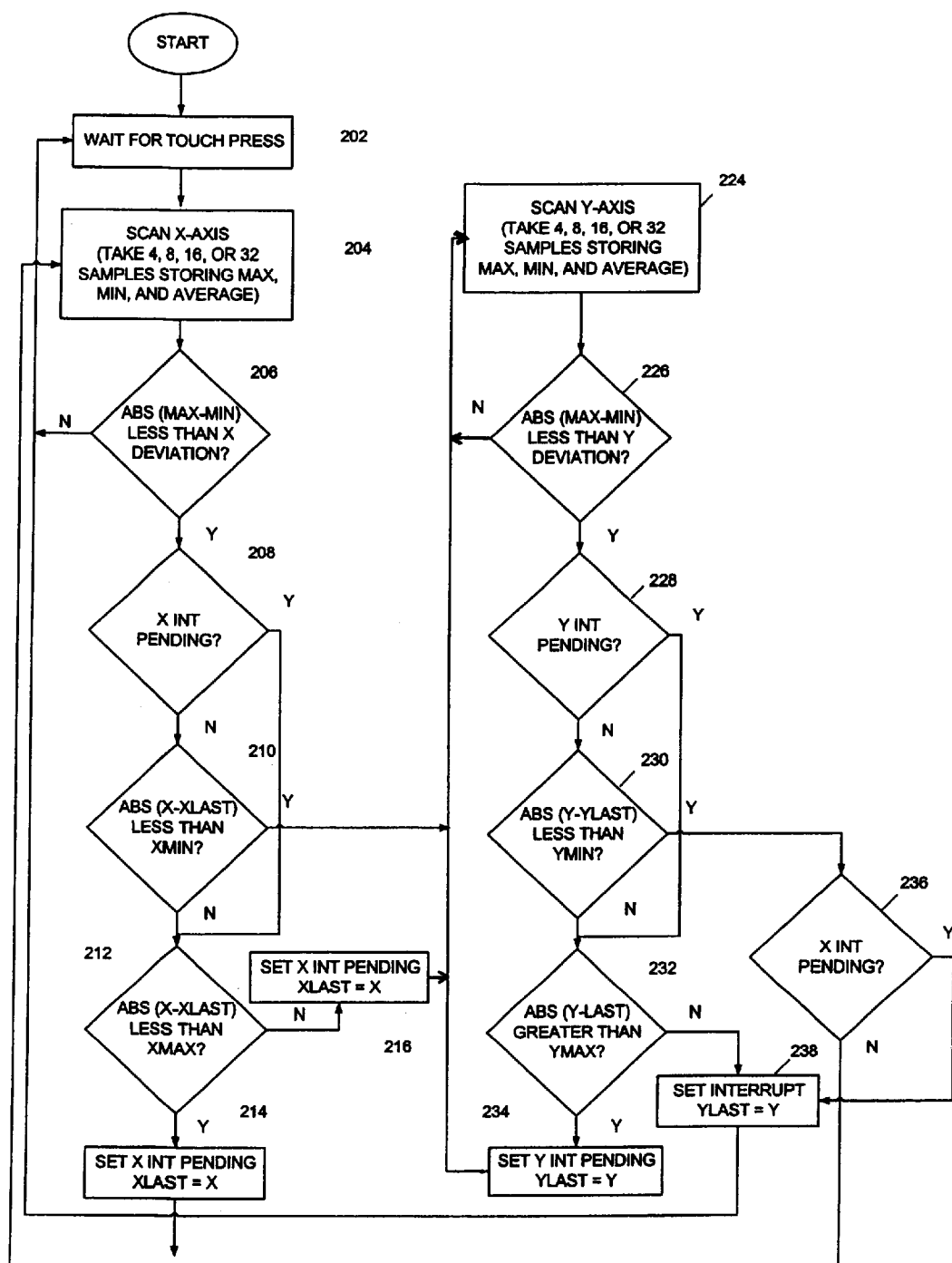


FIG. 6

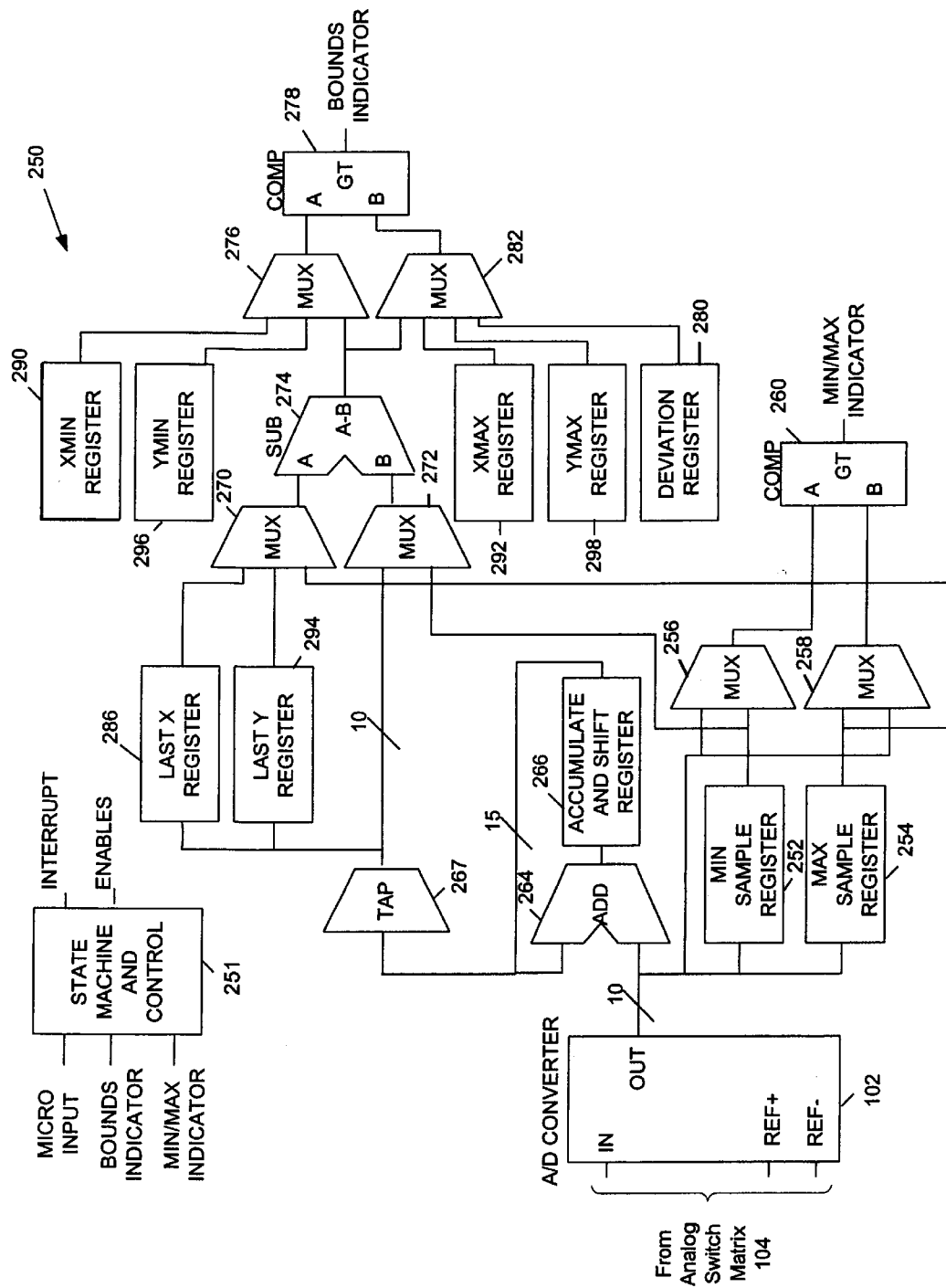


FIG. 7

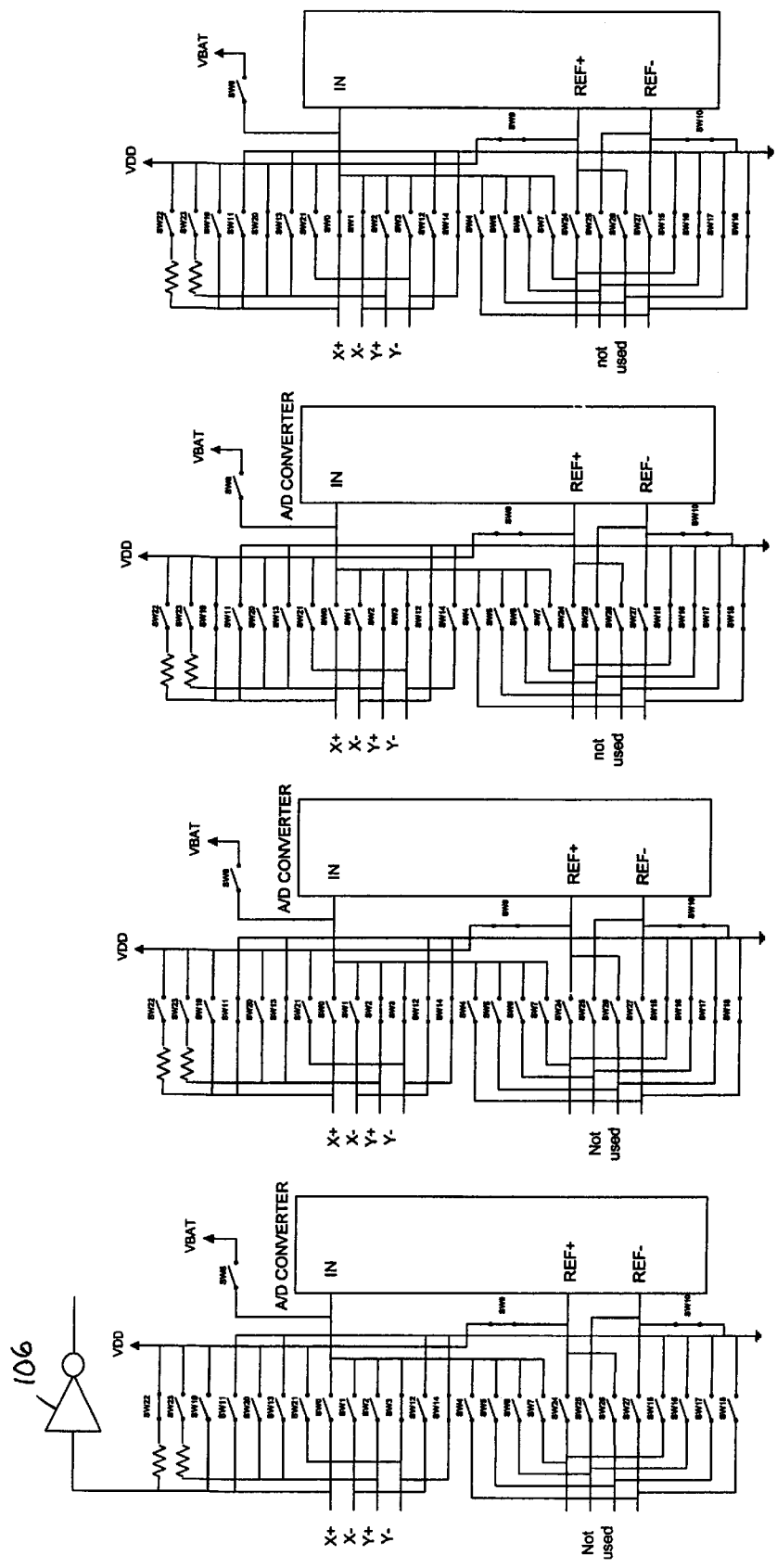


FIG. 8D

FIG. 8C

FIG. 8B

FIG. 8A

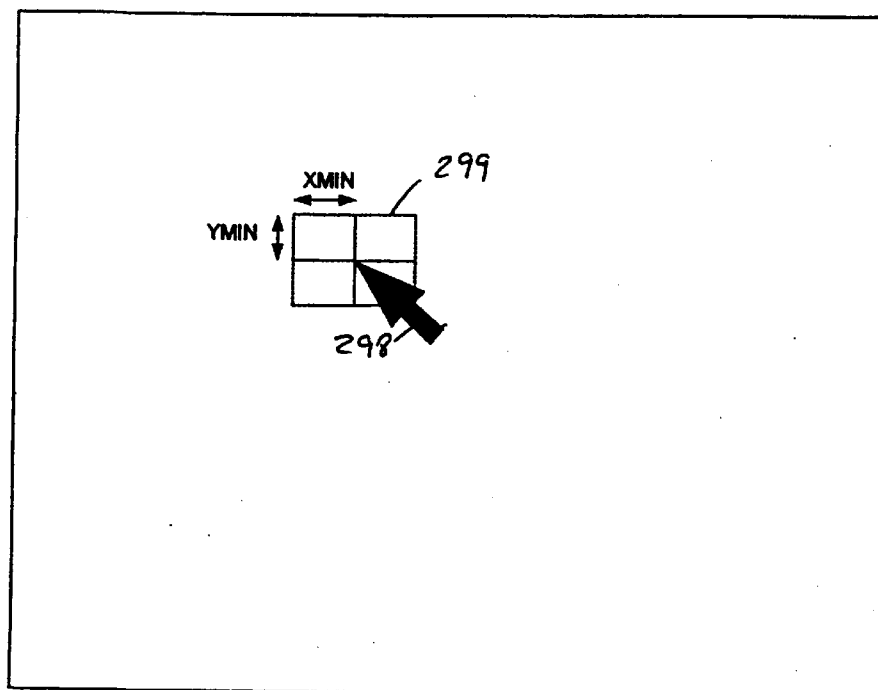


FIG. 9

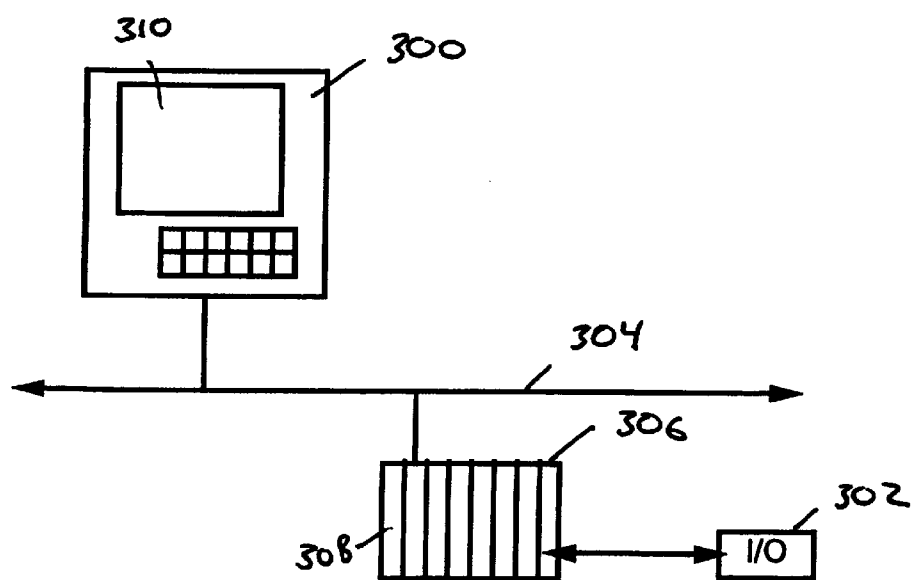


FIG. 10

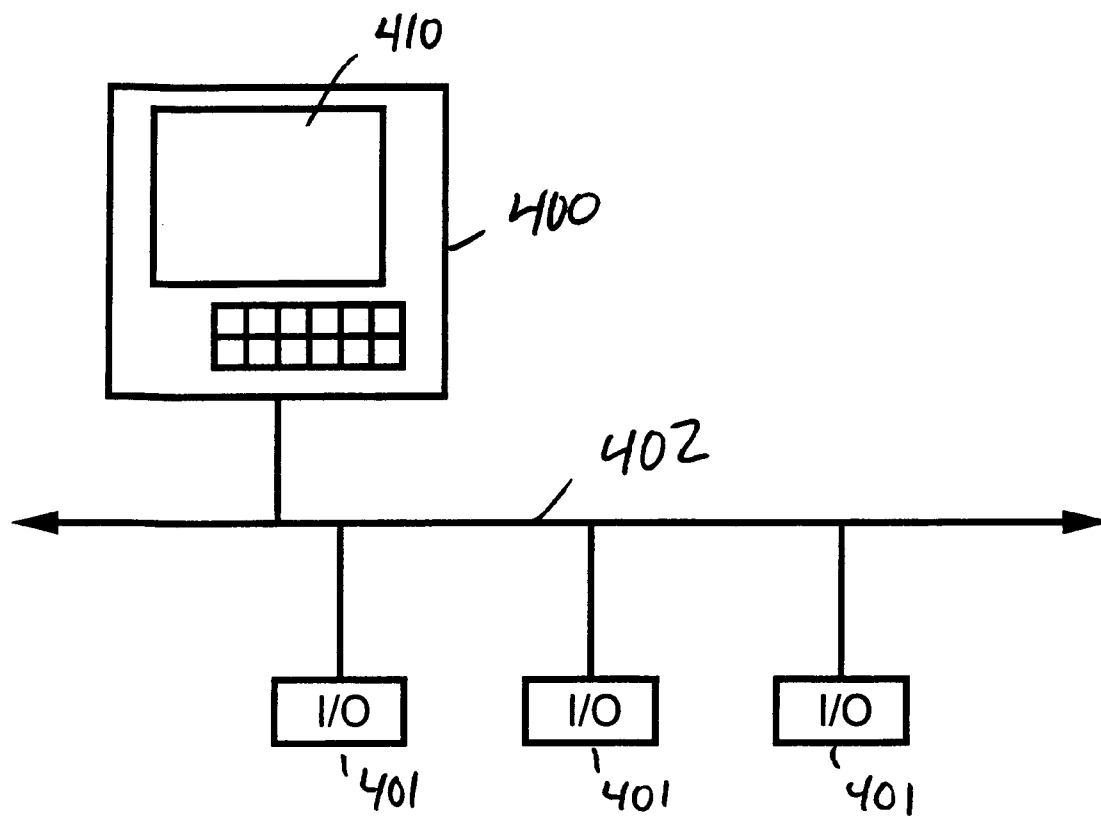


FIG. 11

MULTIPLE TOUCH PLANE COMPATIBLE INTERFACE CIRCUIT AND METHOD

BACKGROUND OF THE INVENTION

1. Field of the Invention

This invention relates to interface circuits for touch screens. This invention also relates to methods of processing inputs from touch screens. This invention also relates to integrated circuits that include interfaces for touch screens.

2. Description of Related Art

Touch plane operator input devices, such as touch screens and touch pads, are known. Typically, a touch plane operator input device provides a generally planar surface that is sensitive to the touch of an operator and is operative to provide one or more output signals indicative of the location of the touch on the plane. The output signals may be based either on the raw data from a touch screen sensor system, or may be based on processed data that provides X-Y coordinate information of the touch.

Touch screens are an enhanced type of computer display device that include a touch plane operator input device. Touch screens are therefore capable not only of displaying information to an operator, but also of receiving inputs from the operator. Touch screens have been put to use in a wide variety of applications. Such applications include consumer applications such as personal digital assistants (PDAs), digital audio playback systems, internet devices, and so on, as well as industrial applications such as operator interfaces in industrial control systems. In some applications, the operator touch is made by a stylus or other device held by the operator. In other applications, the operator touches the screen directly.

Touch pads are similar in operation to touch screens, except that they are not used in connection with a display device. Touch pads are often placed adjacent the space bar on laptop computers to allow operator control of a mouse pointer. Numerous other applications also exist.

For convenience, the discussion will now focus on touch screens, it being understood that the discussion is equally applicable to touch pads and other touch plane operator input devices. In many touch screen systems, a computer system is implemented using "system-on-chip" integrated circuits. In a single chip, these integrated circuits provide many of the functions that used to be spread among many integrated circuits. For example, in addition to the main microprocessor, it is not uncommon to have other circuits such as specialized serial interfaces, UARTs, memory controllers, DMA controllers, Ethernet interfaces, display interfaces, USB (universal serial bus) interfaces, and so on, as well as a touch screen interface used to acquire data from a touch screen.

A problem that has been encountered with system-on-chip integrated circuits adapted for use with touch screens is that there are many different types of touch screens. For example, some touch screens are relatively small (e.g., three inches or less) whereas other touch screens are much larger (e.g., twenty inches or more). The interface characteristics of large touch screens tend to be different because voltage feedback provisions are made to compensate for the effects of resistance and temperature drift due to the larger screen size. Additionally, even within the feedback/nonfeedback categories of touch screens, variations exist. As a result, it has been difficult to provide a system-on-chip that is usable in a wide variety of touch screen applications because different touch

screen applications tend to use different types of touch screens and different types of touch screens have different interface characteristics.

FIGS. 1A–1D below show four different types of commonly employed analog resistive touch screens. In general, most analog resistive touch screens comprise front and back resistive layers (often formed of indium tin oxide) that are pressed together when an operator touch is received. The operator touch causes the two layers to establish an electrical contact at a particular location on each layer. Therefore, by applying a voltage to one layer and reading the voltage established by electrical contact on the other layer, the location of the touch can be determined based on the known characteristics of each layer.

For example, FIG. 1A is a schematic diagram of a 4-wire analog resistive touch screen. As shown therein, the touch screen comprises an X-axis resistive layer 12 and a Y-axis resistive layer 14. The resistance of the layers 12 and 14 is shown schematically as four resistors. The X-axis layer 12 further includes an X+bus bar 16 that connects to an X+ terminal 18 of the touch screen, and an X– bus bar 20 that connects to an X– terminal 22 of the touch screen. Similarly, the Y-axis resistive layer further includes a Y+bus bar 26 that connects to a Y+ terminal 28 of the touch screen, and a Y– bus bar 30 that connects to a Y– terminal 32 of the touch screen. The touch screen is scanned in the X-direction by applying a voltage across the X+ and X– bus bars 16 and 20, and then sensing the voltage that appears at one or both of the Y+ and Y– terminals 28 and 32. Assuming negligible current flow through the Y+ and Y– terminals, the voltage at the Y+ and Y– terminals 28 and 32 should be approximately the same and is determined by the X-coordinate of the point of electrical contact between the X-axis and Y-axis layers 12 and 14, that is, by the X-coordinate of the touch. By comparing the voltage to values determined during calibration, the X-coordinate of the touch can be determined. The Y-coordinate of the touch is then determined in the same manner, except that a voltage is applied across the Y+ and Y– bus bars 26 and 30, and the resultant voltage that appears at one or both of the X+ and X– terminals 18 and 22 is sensed. Of course, with all touch screens, X and Y axis definitions are arbitrary and different definitions can be coordinated with program code to determine screen position.

FIG. 1B is a schematic diagram of an 8-wire analog resistive touch screen. The 8-wire touch screen is the same as the 4-wire touch screen, except that four additional sX+, sX–, sY+ and sY– feedback terminals 40–43 are provided. Typically, both 4-wire touch screens and 8-wire touch screens use an analog-to-digital converter to sense the voltages that appear at the X+ and Y+ terminals. In the case of a 4-wire touch screen, the reference voltage inputs to the analog-to-digital converter are connected directly to the same positive and ground terminals of a power supply that also applies voltages to the touch screen. In the case of an 8-wire touch screen, the reference voltage inputs are connected to sX+ and sX– terminals 40 and 42 of the X+ and X– bus bars or to sY+ and sY– terminals 41 and 43 of the Y+ and Y– bus bars, respectively. The sX+, sX–, sY+ and sY– terminals 40–43 are used for voltage feedback to eliminate the effects of resistance and temperature drift in the circuit components.

FIG. 1C is a schematic diagram of a 5-wire analog resistive touch screen. The 5-wire analog resistive touch screen includes a resistive layer 52 and a wiper layer 54. The resistive layer includes V+, V–, Z+/, and Z–/ terminals 56–59 at the four opposing corners of the touch screen. A constant voltage is applied to the V+ and V– terminals

56–57. The X and Y axes are scanned by applying a voltage at the Z+/Z– and Z–/Z+ terminals **58–59**, and then reversing the polarity of the voltage to scan the other direction. The resulting two voltages produced at the wiper terminal **60** are indicative of the X and Y-positions of the touch.

FIG. 1D is a schematic diagram of a 7-wire analog resistive touch screen. The 7-wire touch screen is the same as the 5-wire touch screen, except that two additional sV+ and sV– feedback terminals **61–62** are provided. As with the sX+, sX–, sY+ and sY– feedback terminals **40–43**, the sV+ and sV– feedback terminals **61–62** are used for voltage feedback to eliminate the effects of resistance and temperature drift in the circuit components.

Analog resistive touch screens are popular because they are inexpensive and reliable. However, other types of touch screens are also common, such as capacitive touch screens and electrostatic touch screens.

In view of these different types of touch screens, a touch screen interface that is compatible with these multiple different types of touch screens (e.g., 4-wire, 5-wire, 7-wire, and 8-wire touch screens) and corresponding input signal formats (e.g., 4-wire, 5-wire, 7-wire, and 8-wire signal formats, respectively) would be highly advantageous. A touch screen interface that is capable automatically detecting the type of touch screen to which it is connected would also be highly desirable.

Another problem that has been encountered in connection with touch screens is the processing overhead required to process information from touch screens. It is known to emulate a hardware mouse by moving a mouse pointer across a touch screen in response to an operator touch that moves across the touch screen. It is desirable to have smooth and responsive mouse pointer movement. Current techniques for obtaining a satisfactory level of responsiveness require a significant amount of processor overhead, however, because the microprocessor scans the touch screen directly or because the microprocessor must monitor a continuous stream of data from a separate scanning module or hardware. For example, dragging a cursor around the screen in random directions on a Microsoft® Windows™ NT system that supports hardware cursoring can register an additional 3% to 7% of the processing power of a 300 MHz Pentium II™ system under the task monitor program. By comparison, major architectural or processor step changes usually provide only a 5% to 10% processing speed improvement. A touch screen interface that reduces the amount of microprocessor overhead required for hardware mouse emulation would be advantageous. This is especially important in embedded solutions and PDAs where high power processors are less cost effective. Therefore, a touch screen interface that minimizes process or overhead would also be highly advantageous, especially if it is capable of detecting the type of touch screen to which it is detected and/or is compatible with multiple different types of touch screens.

Another ongoing challenge that has been encountered is trying to reduce power consumption to extend battery life in devices such as personal digital assistants, laptop computers, portable internet access devices, and so on. A touch screen interface that decreases power consumption would therefore be highly advantageous.

SUMMARY OF THE INVENTION

According to one aspect of the invention, the invention relates to a method of determining a type of a touch plane operator input device comprising sensing the impedance

across first and second terminals of a touch plane operator input device to distinguish the touch screen as being one of at least two different types of touch plane operator input devices.

According to another aspect of the invention, the invention relates to a method of processing an input from a touch plane operator input device comprising determining a first location of a first touch on the touch plane operator input device; determining a second location of a second touch on the touch plane operator input device; comparing the first and second locations to obtain an indication of an amount of difference between the first and second locations; and determining whether the indication of the amount of difference exceeds a predetermined amount. These steps are performed by discrete logic circuitry that provides an event notification to a microprocessor when the indication of the amount of difference exceeds the predetermined amount.

According to yet another aspect of the invention, the invention relates to an interface circuit for a touch plane operator input device, the interface circuit comprising a digital signal processor that includes a data processing path along which data from a touch plane operator input device passes while being processed by the digital signal processor. The interface circuit is capable of processing data from at least first and second different types of touch plane operator input devices. The data path is a common data processing path that is the same for input data regardless of which type of touch plane operator input device is used.

According to yet another aspect of the invention, the invention relates to a method of acquiring an operator input from a touch plane operator input device having first and second touch-sensitive layers. The method comprises waiting for an operator touch to occur on the touch plane operator input device; and then detecting that the operator touch has occurred and determining the location of the operator touch. The first and second layers are substantially free of current flow during the waiting step.

BRIEF DESCRIPTION OF THE DRAWINGS

FIGS. 1A–1D are schematic diagrams of analog resistive touch screens, appropriately labeled “prior art”;

FIG. 2 is a block diagram of a system-on-chip integrated circuit that includes a touch screen interface circuit;

FIG. 3 is a schematic diagram of the touch screen interface circuit of FIG. 2 shown in greater detail;

FIGS. 4A–4B are flow charts showing the operation of the touch screen interface circuit of FIG. 3 to determine a touch screen type;

FIGS. 5A–5D are schematic diagrams showing the configuration of the touch screen interface circuit of FIG. 3 during different steps of the process of FIG. 4;

FIG. 6 is a flow chart of a scanning process used by the touch screen interface circuit of FIG. 3;

FIG. 7 is a block diagram of a logic circuit that is used to implement the process of FIG. 6;

FIGS. 8A–8D are schematic diagrams showing the configuration of the touch screen interface of FIG. 3 during different steps of the scanning process of FIG. 6 for a first type of touch screen;

FIG. 9 is a representation of a minimum move notification system embodied in the flowchart of FIG. 6;

FIG. 10 is a first industrial control system having an operator interface that incorporates the touch screen interface circuit of FIG. 3; and

FIG. 11 is a second industrial control system having an operator interface that incorporates the touch screen interface circuit of FIG. 3.

5

DETAILED DESCRIPTION OF THE
PREFERRED EMBODIMENT

1. Construction of Touch Screen Interface Circuit

Referring now to FIG. 2, FIG. 2 is a block diagram of an example of a system-on-chip integrated circuit **70** that includes a touch screen interface circuit **100** in accordance with a preferred embodiment of the present invention. The integrated circuit **70** includes a plurality of devices that are disposed on a peripheral bus **72** including one or more universal asynchronous receiver-transmitters (UARTs) **73**, one or more serial interfaces **74** for interfacing to external devices (such as digital to analog converters (DACs), audio controllers, and so on), interrupt controller/timers **75**, a keypad interface **76**, one or more I/O ports **77**, and a touch screen interface circuit **100** (described in greater detail below). The integrated circuit **70** also includes a plurality of devices that are disposed on a processor bus **80** including one or more universal serial bus (USB) host interfaces **81** for connection to USB devices such as a keyboard, mouse, printer, and so on, an Ethernet port **82**, DMA controllers **83**, a microprocessor **86**, a display interface **87** (for example, a raster engine), memory controllers **88** and **90**, and boot ROM **89** for storing program code executed during a boot-up sequence.

Referring now to FIG. 3, a portion of the preferred touch screen interface circuit **100** of FIG. 2 is illustrated in greater detail. The remainder of the preferred interface circuit is shown in FIG. 7, discussed in greater detail below. In FIG. 3, the interface circuit **100** comprises an analog-to-digital (A/D) converter **102**, an analog switch matrix **104**, and an inverting logic gate **106**. The analog-to-digital converter **102** may be implemented using virtually any A/D conversion technique. In the illustrated embodiment, the A/D converter **102** is a successive approximation A/D converter or a delta sigma A/D converter.

The analog switch matrix **104** comprises twenty-eight analog switches, labeled SW0–SW27. The configuration of the switch matrix **104** is controlled by a plurality of registers including a DIRECT register **110**, a DETECT register **112**, a DISCHARGE register **114**, an XSAMPLE register **116**, and a YSAMPLE register **118**. Additional registers may also be utilized if it is desired to achieve additional functionality using the analog switch matrix **104**.

The registers **110–118** control the configuration of the analog switch matrix. The configuration of the switch matrix **104** as shown in FIG. 3 is characterized by the following bit string: 0000 0100 0000 0000 0110 0010 0000. The bits in the foregoing bit string correspond to the open/closed states of the switches SW0–SW27 in FIG. 3, with the number of the switch (0–27) indicating bit position and a “1” at a particular bit position indicating that a particular switch is closed. Different configurations of the analog switch matrix can be obtained with different bit strings. These bit strings may be stored in the registers **110–118** or, alternatively, may be provided directly by the microprocessor. As will be described in greater detail, below, each register controls **110–118** the configuration of the analog switch matrix **104** during a different mode of operation. Different values may be stored in the registers **112–118** depending on which type of touch screen is used.

The analog switch matrix includes eight input/output (I/O) terminals **120–134**. The first terminal **120** is labeled “X+ or V+”, indicating that the terminal **120** is adapted to be operably connected to the X+ terminal of 4-wire and 8-wire touch screens, and is adapted to be operably connected to the V+ terminal of 5-wire and 7-wire touch screens. The second

6

terminal **122** is labeled “X– or V–”, indicating that the terminal **122** is adapted to be operably connected to the X– terminal of 4-wire and 8-wire touch screens, and is adapted to be operably connected to the V– terminal of 5-wire and 7-wire touch screens. The third terminal **124** is labeled “Y+ or Z+/–”, indicating that the terminal **124** is adapted to be operably connected to the Y+ terminal of 4-wire and 8-wire touch screens, and is adapted to be operably connected to the Z+/– terminal of 5-wire and 8-wire touch screens. The fourth terminal **126** is labeled “Y– or Z–/+”, indicating that the terminal **126** is adapted to be operably connected to the Y– terminal of 4-wire and 8-wire touch screens and is adapted to be operably connected to the Z–/+ terminal of 5-wire and 7-wire touch screens. The fifth terminal **128** is labeled “sX+ or sV+”, indicating that the terminal **128** is adapted to be operably connected to the sX+ terminal of 8-wire touch screens and is adapted to be operably connected to the sV+ terminal of 7-wire touch screens. For 4-wire and 5-wire touch screens, the terminal **128** is not utilized. The sixth terminal **130** is labeled “sX– or sV–”, indicating that the terminal **130** is adapted to be operably connected to the sX– terminal of 8-wire touch screens and is adapted to be operably connected to the sV– terminal of 7-wire touch screens. For 4-wire and 5-wire touch screens, the terminal **130** is not utilized. The seventh terminal **132** is labeled “sY+ or wiper”, indicating that the terminal **132** is adapted to be operably connected to the sY+ terminal of 8-wire touch screens and is adapted to be operably connected to the wiper terminal of 7-wire touch screens. For 4-wire and 5-wire touch screens, the terminal **132** is not utilized. Finally, the eighth terminal **134** is labeled “sY–”, indicating that the terminal **134** is adapted to be operably connected to the sY– terminal of 8-wire touch screens. For 4-wire, 5-wire and 7-wire touch screens, the terminal **134** is not utilized.

The analog switch matrix **104** allows the terminals **120–134** to be selectively connected to V_{DD} and V_{SS} power supply terminals, to an analog input of the A/D converter **102**, and to the voltage reference inputs of the A/D converter **102**. In the case of the terminal **120**, the terminal **120** can receive the V_{DD} power supply input either directly (SW11) or by way of a pull-up resistor (SW22). With the pull up resistor, the analog switch matrix **104** can supply the V_{DD} power supply input to an I/O terminal of a touch screen in a way that allows the terminal **120** to be pulled low if the touch screen I/O terminal is connected to ground (either directly or by way of touch screen resistance), or to be left high if no connection to ground exists. A similar arrangement is provided for the terminal **124**. As will be detailed below, this is one preferred way of enabling the touch screen interface circuit to distinguish between different types of touch screens.

2. Automatic Detection of Touch Screen Type

Referring now to FIGS. 4A–4B, two preferred methods of determining a touch screen type is illustrated. The touch screen interface circuit **100** is capable of receiving input data from a variety of types of touch screens, and it is desirable that the touch screen interface circuit **100** be able automatically determine the touch screen type to which it is connected. This can be accomplished by sensing the impedance characteristics of the touch screen. FIGS. 4A–4B describe two exemplary methods that can be performed during a boot-up sequence of a device that incorporates the interface circuit **100** to determine a touch screen type.

Referring first to FIG. 4A, at step **150**, it is first determined whether a touch screen is connected to the interface circuit **100**. FIG. 5A shows the configuration of the analog

switch matrix **104** during step **150**. The following table summarizes the operation of the analog switch matrix **104** during step **150**:

STEP	REGISTER	EFFECT	TEST	RESULT
150	047F601	Pull X+ high, Short X-, Y+, Y-, sX+, sX-, sY+, sY- to VSS	ADC conversion on X+	Low = Touch screen connected High = No touch screen connected

The value stored in the DIRECT register **110**, which changes throughout the processes of FIGS. **4A–4B**, controls the configuration of the analog switch matrix **104** during the processes of FIGS. **4A–4B**. The value stored in the DIRECT register **110** during step **150** is 047F601 (hexadecimal) or 0000 0100 0111 1111 0110 0000 0001 (binary). When the analog switch matrix **104** is programmed with this value, the effect is to pull X+high and to short the X-, Y+, Y-, sX+, sX-, sY+, and sY- terminals **122–134** to V_{SS}, as described in the table. The A/D converter **102** then performs an A/D conversion on the X+ terminal **120**.

If a touch screen is connected, then the touch screen establishes a connection between the X+ and X- terminals **120** and **122** (i.e., in the case of a 4-wire or 8-wire touch screen, or the V+ and V- terminals in the case of a 5-wire or 7-wire touch screen), causing the X+ terminal to be pulled low. If no touch screen is connected, then no connection is established between the X+ and X- terminals **120** and **122**, and the X+ terminal **120** remains pulled high. The X+ terminal **120** is also connected to the input of the A/D converter **102** and, therefore, the voltage at the X+ terminal **120** can be measured using the A/D converter **102** to determine whether a touch screen is connected. If no touch screen is connected, then the auto detect process terminates, and, for example, the user may be notified that no touch screen has been detected.

Assuming a touch screen is connected, it is next determined at step **152** whether an 8-wire touch screen is connected or whether another type of touch screen is connected. FIG. **5B** shows the configuration of the analog switch matrix **104** during step **152**. The following table summarizes the operation of the analog switch matrix **104** during steps **152–156**:

STEP	REGISTER	EFFECT	TEST	RESULT
152	0840604	Pull Y+ high, Short sY- to VSS	ADC conversion on Y+	High = Other type of touch screen connected Low = 8-wire touch screen connected Operational
154	0401601	Pull X+ high, Short X- to VSS	check that X+ is low	Operational
154	0408601	Pull X+ high, Short sX+ to VSS	check that X+ is low	Operational
154	0410601	Pull X+ high, Short sX- to VSS	check that X+ is low	Operational
154	0804604	Pull Y+ high, Short Y- to VSS	check that Y+ is low	Operational
154	0820604	Pull Y+ high, Short sY+ to VSS	check that Y+ is low	Operational

-continued

STEP	REGISTER	EFFECT	TEST	RESULT
5	156	0402601	Pull X+ high, Short Y+ to VSS	ADC conversion on X+
10				Low = touch screen pressed or shorted High = No touch screen press

If an 8-wire touch screen is connected, then the Y+ terminal **120** is pulled low because the sY- terminal establishes a connection to ground. For all other touch screen types, the sY- terminal is unused and therefore the Y+ terminal remains high. As a result, when the switch matrix **104** is configured as shown in FIG. **5B** the voltage at the Y+ terminal **120** can be measured using the A/D converter **102** to determine whether an 8-wire touch screen is connected.

If an 8-wire touch screen is connected, then the process proceeds to step **154**, where it is determined whether the touch screen is operating properly. The various configurations for the analog switch matrix **104** are set forth in the table above. If all the conditions in the table are met, then the touch screen is operating properly; otherwise, the touch screen is not operating properly.

Next, at step **156**, it is determined whether the touch screen is pressed. This feature may be useful, for example, to give the operator the option to proceed to a “setup” screen during a boot-up process. To perform this test, the X+ terminal **120** is pulled high and the Y+ terminal **124** is connected to the ground terminal, and it is determined whether the X+ terminal **120** is high or low (i.e., whether the X-axis layer is touching the Y-axis layer). If the X+ terminal **120** is low, then the touch screen is pressed (although an alternative reason may be that the touch screen is shorted). If the X+ terminal **120** is high, then the touch screen is not pressed.

If it is determined at step **152** that an 8-wire touch screen is not connected to the interface circuit **100**, then the process proceeds to step **158**. At step **158**, it is determined whether a 7-wire touch screen is connected or whether another type of touch screen is connected. FIG. **5C** shows the configuration of the analog switch matrix **104** during step **158**. The following table summarizes the operation of the analog switch matrix **104** during step **158** and steps **154–156** for a 7-wire touch screen:

STEP	REGISTER	EFFECT	TEST	RESULT
158	0408601	Pull X+ high, Short sX+ to VSS	ADC conversion on X+	High = Other type of touch screen connected Low = 7-wire touch screen connected (5 wire with feedback) Operational
55				
60	154	0401601	Pull X+ high, Short X- to VSS	check that X+ is low
	154	0402601	Pull X+ high, Short Y+ to VSS	check that X+ is low
	154	0404601	Pull X+ high, Short Y- to VSS	check that X+ is low
65	154	0408601	Pull X+ high, Short sX+ to VSS	check that X+ is low

-continued

STEP	REGISTER	EFFECT	TEST	RESULT
154	0410601	Pull X+ high, Short sX- to VSS	check that X+ is low	Operational
156	0420601	Pull X+ high, Short sY+ to VSS	ADC conversion on X+	Low = Touch screen pressed or shorted High = No touch screen press

If a 7-wire touch screen is connected, then the X+ terminal **120** is pulled low because the only touch screen types that have sX+ and sX- connected are the 7-wire and 8-wire touch screens, and the 8-wire touch screen has already been eliminated. As a result, when the switch matrix **104** is configured as shown in FIG. 5C, the voltage at the X+ terminal **120** can be measured using the A/D converter **102** to determine whether an 7-wire touch screen is connected.

If a 7-wire touch screen is connected, then the process proceeds to step **154**, where it is determined whether the touch screen is operating properly. The various configurations for the analog switch matrix **104** are set forth in the table above. If all the conditions in the table are met, then the touch screen is operating properly; otherwise, the touch screen is not operating properly.

Next, at step **156**, it is determined whether the touch screen is pressed. To perform this test, the X+ terminal **120** is pulled high and the wiper terminal **132** is connected to the ground terminal, and it is determined whether the X+ terminal **120** is high or low (i.e., whether the X-axis layer is touching the wiper layer). If the X+ terminal **120** is low, then the touch screen is pressed (although an alternative reason may be that the touch screen is shorted). If the X+ terminal **120** is high, then the touch screen is not pressed.

If it is determined at step **158** that an 7-wire touch screen is not connected to the interface circuit **100**, then the process proceeds to step **160**. At step **160**, it is determined whether a 4-wire touch screen is connected or whether a 5-wire touch screen is connected. The following table summarizes the operation of the analog switch matrix **104** during step **160**:

STEP	REGISTER	EFFECT	TEST	RESULT
160	0404601	Pull X+ high, Short Y- to VSS	ADC conversion on X+	High = 4-wire touch screen connected Low = 4-wire touch screen (pressed or shorted) or 5- wire touch screen connected
160	0402601	Pull X+ high, Short Y+ to VSS	ADC conversion on X+: voltage A	Conversion value (A < C and B < C and D < F and E < F) = 5-wire touch screen
160	0600601	Pull X+ high, Short Y- to VSS	ADC conversion on X+: voltage B	
160	0401601	Pull X+ high, Short X- to VSS	ADC conversion on X+: voltage C	Conversion value (A > C or B > C or D > F or E > F) =

-continued

STEP	REGISTER	EFFECT	TEST	RESULT
5	160	0800E04	Pull Y+ high, Short X+ to VSS	ADC conversion on Y+: voltage D
10	160	0801604	Pull Y+ high, Short X- to VSS	ADC conversion on Y+: voltage E
15	160	0804604	Pull Y+ high, Short Y- to VSS	ADC conversion on Y+: voltage F

The first step is to determine if a 4-wire touch screen can be directly detected. This is done by determining whether the X-axis and Y-axis layers of the screen are connected. In the case of a 5-wire touch screen, the same layer is used for both the X-axis and the Y-axis, and therefore the X+ terminal **18** and the Y-terminal **32** are resistively connected. In the case of a 4-wire touch screen, the X-axis and Y-axis layers are different, and therefore connecting the Y-axis layer to ground will only pull the x-axis layer low if the touch screen is being pressed. Although this is also true for 8-wire touch screens, 8-wire touch screens have already been eliminated in step **152**.

As a result, if the X+ terminal **120** is high, then a 4-wire touch screen is connected. If the X+ terminal **120** is low, then a 4-wire screen may be connected and pressed, or a 5-wire screen may be connected. In this event, the remaining configurations of the table above are utilized. By using the internal pull-up resistors, the analog switch array **104** can be configured to perform relative impedance measurements. If a 5-wire touch screen is connected, the resistance between any two adjacent corners of the touch screen will be less than the resistance diagonally across the touch screen. Because of the way X+/X- and Y+/Y- are connected, this is exactly opposite of a pressed 4-wire touch screen. In a pressed 4-wire touch screen, depending on where the press is occurring, the impedance from X+ to Y+ will be greater than X+ to X-, X+ to Y- will be greater than X+ to X-, Y+ to X+ will be greater than Y+ to Y-, or Y+ to X- will be greater than Y+ to Y-. One of these OR'ed conditions will be true (and they may all be true because the contact resistance is usually fairly high compared to the indium tin oxide layer resistance). As a result, a determination can be made whether a 4-wire touch screen or a 5-wire touch screen is connected based on the relative impedance comparisons set forth above.

Regardless whether a 4-wire or 5-wire touch screen is connected, the process proceeds to step **154** where it is determined whether the touch screen is operating properly. After that, at step **156**, it is determined whether the touch screen is pressed. The following table summarizes the operation of the analog switch matrix **104** during steps **154-156** for a 4-wire touch screen:

STEP	REGISTER	EFFECT	TEST	RESULT
154	0401601	Pull X+ high, Short X- to VSS	Check that X+ is low	Operational
65	154	0804604	Pull Y+ high, Short Y- to VSS	check that Y+ is low

11

-continued

STEP	REGISTER	EFFECT	TEST	RESULT
154	0402601	Pull X+ high, Short Y+ to VSS	ADC conversion on X+	Low = touch screen pressed or shorted High = No touch screen press

The following table summarizes the operation of the analog switch matrix **104** during steps **154–156** for a 5-wire touch screen:

154	0401601	Pull X+ high, Short X- to VSS	check that X+ is low	Operational
154	0402601	Pull X+ high, Short Y+ to VSS	check that X+ is low	Operational
154	0404601	Pull X+ high, Short Y- to VSS	check that X+ is low	Operational
156	0420601	Pull X+ high, Short sY+ to VSS	ADC conversion on X+	Low = touch screen pressed or shorted High = No touch screen press

Referring now to FIG. **4B**, a second method for determining a touch screen type is illustrated. The second method is digital detection method that avoids using the A/D converter **102**. False A/D converter readings can occur due to background noise, and other problems. For example, some delta sigma converters produce invalid samples during resynchronization. An analog algorithm may require sampling and averaging to reject noise and false readings. In addition, when detecting differences between a 5-wire touch screen and a pressed 4-wire touch screen for example, timing of the algorithm can be critical in the presence of intermittent or bouncing contact. Although some re-sampling may be required, a digital method can help to avoid potential timing and sampling issues during the algorithm.

At step **172**, it is first determined whether a touch screen is connected to the interface circuit **100**. The first two parts of this step ensure that the Touch Detect circuit is working. The following table summarizes the operation of the analog switch matrix **104** during step **172**:

STEP	REGISTER	EFFECT	TEST	RESULT
172	0000800	Short X+ to VSS	Check Touch_Detect bit:	High = Operational
172	0040000	Pull X+ high	Check Touch_Detect bit:	Low = Operational
172	047F000	Pull X+ high, Short X-, Y+, Y-, sX+, sX-, sY+, sY- to VSS	Check Touch_Detect bit:	Low = No touch screen connected High = touch screen connected

The operation is similar to the operation at step **150** as described above, except that the X+ terminal **120** is measured at the output of the inverting logic gate **106**.

Assuming a touch screen is connected, it is next determined at step **174** whether a 4-wire or 8-wire touch screen is connected, or whether a 5-wire or 7-wire touch screen is

12

connected. In this step, the Y+ and X+ terminals are first manually shorted together at the touch screen connector. The following table summarizes the operation of the analog switch matrix **104** during step **174**:

STEP	REGISTER	EFFECT	TEST	RESULT
174	0840605	Pull Y+ high, Short sY- to VSS	Check Touch_Detect bit:	Low = 5-wire or 7-wire touch screen connected High = 8-wire or 4-wire touch screen connected

If step **174** determines that a 4-wire or an 8-wire touch screen is connected (instead of a 5-wire or a 7-wire touch screen), then the process proceeds to step **176**, where it is determined whether a 4-wire touch screen is connected or whether an 8-wire touch screen is connected. The following table summarizes the operation of the analog switch matrix **104** during step **176**:

STEP	REGISTER	EFFECT	TEST	RESULT
176	0820605	Pull Y+ high, Short sY+ to VSS, Short Y+ and X+ together	Check Touch_Detect bit:	Low = 4-wire touch screen connected High = 8-wire touch screen connected

Regardless whether a 4-wire touch screen or an 8-wire touch screen is connected, the process proceeds to steps **178** and **180** where it is determined whether the touch screen is operating properly and whether the touch screen is pressed. The following table summarizes the operation of the analog switch matrix **104** during step **178–180** for a 4-wire touch screen:

STEP	REGISTER	EFFECT	TEST	RESULT
178	0401000	Pull X+ high, Short X- to VSS	Check Touch_Detect bit:	High = Operational
178	0804005	Pull Y+ high, Short Y- to VSS, Short Y+ and X+ together	Check Touch_Detect bit:	High = Operational
178	0404005	Pull X+ high, Short Y- to VSS, Short Y+ and X+ together	Check Touch_Detect bit:	High = Operational
180	0402000	Pull X+ high, Short Y+ to VSS	Check Touch_Detect bit:	High = touch screen pressed or shorted Low = No touch screen press

The following table summarizes the operation of the analog switch matrix **104** during step **178–180** for an 8-wire touch screen:

STEP	REGISTER	EFFECT	TEST	RESULT
178	0401000	Pull X+ high, Short X- to VSS	Check Touch_Detect bit:	High = Operational
178	0408000	Pull X+ high, Short sX+ to VSS	Check Touch_Detect bit:	High = Operational
178	0410000	Pull X+ high, Short sX- to VSS	Check Touch_Detect bit:	High = Operational
178	0804005	Pull Y+ high, Short Y- to VSS, Short Y+ and X+ together	Check Touch_Detect bit:	High = Operational
178	0820005	Pull Y+ high, Short sY+ to VSS, Short Y+ and X+ together	Check Touch_Detect bit:	High = Operational
178	0840005	Pull Y+ high, Short sY- to VSS, Short Y+ and X+ together	Check Touch_Detect bit:	High = Operational
180	0402000	Pull X+ high, Short Y+ to VSS	Check Touch_Detect bit:	High = touch screen pressed or shorted Low = No touch screen press

If it is determined at step **174** that a 5-wire or 7-wire touch screen is connected a 4-wire or an 8-wire touch screen), then the process proceeds to step it is determined whether a 5-wire touch screen is connected or whether touch screen is connected. The following table summarizes the operation of switch matrix **104** during step **182**:

STEP	REGISTER	EFFECT	TEST	RESULT
182	0408000	Pull X+ high, Short sX+ to VSS	Check Touch_Detect bit:	Low = 5-wire touch screen connected High = 7-wire touch screen connected (5 wire with feedback)

Regardless whether a 5-wire touch screen or an 7-wire touch screen is connected, the process proceeds to steps **178** and **180** where it is determined whether the touch screen is operating properly and whether the touch screen is pressed. The following table summarizes the operation of the analog switch matrix **104** during step **178–180** for a 5-wire touch screen:

STEP	REGISTER	EFFECT	TEST	RESULT
178	0401000	Pull X+ high, Short X- to VSS	Check Touch_Detect bit:	High = Operational
178	0402000	Pull X+ high, Short Y+ to VSS	Check Touch Detect bit:	High = Operational
178	0404000	Pull X+ high, Short Y- to VSS	Check Touch_Detect bit:	High = Operational

-continued

STEP	REGISTER	EFFECT	TEST	RESULT
5 180	0420000	Pull X+ high, Short sY+ to VSS	Check Touch_Detect bit:	High = touch screen pressed or shorted Low = No touch screen press

The following table summarizes the operation of the analog switch matrix **104** during step **178–180** for a 7-wire touch screen:

STEP	REGISTER	EFFECT	TEST	RESULT
20 178	0401000	Pull X+ high, Short X- to VSS	Check Touch_Detect bit:	High = Operational
178	0402000	Pull X+ high, Short Y+ to VSS	Check Touch_Detect bit:	High = Operational
25 178	0404000	Pull X+ high, Short Y- to VSS	Check Touch_Detect bit:	High = Operational
178	0408000	Pull X+ high, Short sX+ to VSS	Check Touch_Detect bit:	High = Operational
178	0410000	Pull X+ high, Short sX- to VSS	Check Touch_Detect bit:	High = Operational
30 180	0420000	Pull X+ high, Short sY+ to VSS	Check Touch_Detect bit:	High = touch screen pressed or shorted Low = No touch screen press

In the above examples, infinite impedance (open circuit) and relative impedance sensing techniques are used to test touch screen resistances. Similar techniques could also be applied to perform other types of impedance sensing, for example, in connection with capacitive touch screens. Various capacitance sensing techniques could be used to distinguish between various types of capacitive touch screens and/or to distinguish capacitive touch screens from resistive touch screens.

3. Touch Screen Data Processing

Once a determination has been made regarding the touch screen type to which the interface circuit **100** is connected, various values are written in the registers **112–118** in accordance with the touch screen type that has been detected.

The following table shows the values stored in the registers **112–118** for each of the four types of touch screens.

	DETECT	DISCHARGE	XSAMPLE	YSAMPLE
4-wire touch screen	0402608	007FE0C	00F960C	017C603
5-wire touch screen	0420620	007FE20	01DD620	02DB620
7-wire touch screen	0420620	307F820	31DD020	32DB020
8-wire touch screen	0402608	007FE0C	308100C	C104003

The values written in the registers **112–118** customize an otherwise generic scanning process (generic in the sense that

15

it can be used with multiple types of touch screens) for use with the particular type of touch screen actually connected to the touch screen interface circuit **100**. Because the process is otherwise generic, it is possible to use a common data processing path regardless of which touch screen type is used.

FIG. **6** is a flowchart that illustrates the preferred scanning process. While the process of FIG. **6** is usable in connection with any form of operator interface, the process of FIG. **6** is particularly useful in connection an interface that emulates a hardware mouse by receiving operator inputs and moving a mouse pointer across a touch screen in response. Although the mouse pointer in a Windows™ interface is often an arrow that appears to point to a location, other shapes are also extremely common. Herein, the term “mouse pointer” is used to refer to any graphic marker on a display that is intended to identify a location on the display.

The process of FIG. **6** is preferably implemented using digital signal processing circuitry that is not part of the microprocessor **86** of the system-on-chip integrated circuit **70**. This allows the touch screen to be serviced by a device other than the microprocessor, thereby reducing microprocessor overhead. Even more preferably, the process of FIG. **6** is preferably implemented using discrete logic circuitry (as opposed to another microprocessor). The output of the discrete logic circuitry is an event notification, preferably in the form of a hardware interrupt provided to the microprocessor **86**, which notifies the microprocessor **86** that the mouse pointer has moved by at least a predetermined amount, and provides the microprocessor **86** with updated location information. As a result, the microprocessor **86** is interrupted only when touch screen movement is sufficiently significant. Therefore, intervention of the microprocessor **86** in the scanning process is minimized.

FIG. **7** is a block diagram of a logic circuit **250** that is used to implement the computational aspects of the process embodied in the flowchart of FIG. **6**. The logic circuit **250** is part of the touch screen interface circuit **100**. The logic circuit **250** preferably performs all sampling, averaging, and range checking for samples acquired by the A/D converter **102** from the touch screen sensor circuitry. The sequential aspects of the process of FIG. **6** are implemented in a state machine **251**. In addition to controlling the overall sequence of operations in FIG. **7**, the state machine **251** is also used to program the analog switch matrix with values from the registers **112–118** as the process proceeds. The individual states of the state machine **251** track the steps of the flow chart of FIG. **6** and therefore are not separately shown. In this regard, it may be noted that a circuit layout for the entire discrete logic circuit **250** including the state machine **251** may be generated using a hardware description language (HDL) such as verilog or VHDL (VHASIC (Very High level ASIC) Hardware Description Language).

If desired, provision may also be made to disable the touch screen circuitry of FIG. **7** and allow the microprocessor **86** to directly control the A/D converter **102** and the analog switch matrix **104**. This allows for the implementation of additional scanning algorithms if desired. Assuming the microprocessor **86** does not directly control the A/D converter **102** and the analog switch matrix **104**, then the responsibilities of the microprocessor **86** in the scanning process are simply to load all of the setup registers for the touch array scanning and enable the state machine **251** during initialization, and then respond to incoming event notifications during normal operation. The logic circuit **250** is preferably responsible for scanning the touch screen and acquiring data samples, verifying that the deviation in the

16

sample set is less than a predetermined amount, averaging the samples to determine the X and Y locations of the touch, verifying that any movement in the touch location is not so large as to be unrealistic, and verifying that any movement is large enough to issue an event notification to the microprocessor **86**.

For all touch screen types, the touch screen X and Y axis positioning are preferably linear so that all algorithms (described below) have linear operation characteristics. In other words, the voltage that is sampled by the A/D converter **102** is preferably linearly related to the X-position or the Y-position of the touch, depending on which axis is being scanned. Thus, a minimum sample voltage corresponds to a minimum position along the X-axis, a maximum sample voltage corresponds to a maximum position along the X-axis, and there is a linear relationship between voltage and position between these two extremes. For 8-wire and 4-wire touch screens, this is normally the case by virtue of the manner in which these touch screens are constructed. Most 5-wire and 7-wire touch screens are constructed with proprietary compensation techniques and are sufficiently close to linear to produce acceptable results. For those that produce non-linear results, the returned values can be adjusted in firmware in conventional fashion to determine screen position.

The process begins at a touch detect step **202** in which the system waits for a touch press. The switches SW0–SW27 in the touch detect step **202** are controlled by the value in the DETECT register **112**. The configuration of the analog switch matrix in step **202** for a 4-wire touch screen is shown in FIG. **8A**. The touch press signal is generated at the output of the inverting logic gate **106**. The process stays at the touch detect step **202** until a touch is detected, at which point the process to the next step.

At step **204**, the X-axis is scanned. The first step to scanning the X-axis is to discharge the touch screen, wait for a predetermined settling time to elapse, apply a voltage to scan the X-axis, and then wait for another predetermined settling time to elapse. This sequence of events allows for any residual voltage in the touch screen sensor circuitry to be discharged and for the touch screen sensor circuitry to reach stable operating conditions after a scanning voltage is applied and before samples are acquired. FIG. **8B** shows the configuration of the analog switch matrix **104** for a 4-wire touch screen to discharge the touch screen sensor circuitry.

FIG. **8C** shows the configuration of the analog switch matrix **104** for a 4-wire touch screen to apply a voltage to the touch screen sensor circuitry to scan the X-axis.

The A/D converter **102** begins acquiring samples after the scanning voltage is applied and after the touch screen sensor circuitry reaches stable operating conditions. To allow a simple division to be implemented as described below, the number of samples taken is preferably either 4, 8, 16, or 32. Each sample is a voltage sample acquired from the X+bus bar (e.g., if a 4-wire touch screen is being scanned). However, since voltage and position are linearly related as previously described, each sample also represents a particular X-position on the screen. Ideally, the samples should be very close together (that is, the deviation should be small); if they are not, the sample set is discarded as described below.

As the samples are acquired during step **204**, the maximum sample value, the minimum sample value, and an average sample value are determined and stored. As previously mentioned, the calculations described in the flowchart of FIG. **6** are performed by the discrete logic circuitry of FIG. **7**. As shown therein, the A/D converter **102** samples the

17

analog voltages acquired via the analog switch matrix **104** (see FIG. 3). The sample acquired by the A/D converter **102** is provided to a MIN sample register **252**, a MAX sample register **254**, and multiplexors **256** and **258**. The MIN register **252** is initialized to a value of 4095 and the MAX register **254** is initialized to a value of zero. When the first sample is acquired, the first sample is passed to the comparator **260** by the multiplexor **258**. At the same time, the value in the MIN sample register **252** is passed to the comparator **260** by the multiplexor **256**. The comparator **260** compares the first sample to the value in the MIN sample register **252**. In the illustrated embodiment, the A/D converter **102** is a twelve bit A/D converter, and therefore the output of the A/D converter cannot exceed 4095. Therefore, the first sample is lower than the initial value stored in the MIN sample register **252**, and the first sample replaces the value stored in the MIN sample register **252**. Thereafter, the first sample is also provided to the multiplexor **256** and passed to the comparator **260**. At the same time, the value in the MAX sample register **254** is passed by the multiplexor **258** to the comparator **260**. The comparator **260** compares the value stored in the MAX sample register **254** with the first sample. Since the MAX sample register **254** is initialized to zero, the first sample is greater than the value stored in the MAX sample register, and the first value replaces the value stored in the MAX sample register **254**. Thereafter, as new samples are acquired, the new samples are compared with the values stored in the MIN and MAX sample registers **252** and **254**, and after all of the samples have been acquired, the minimum sample will be stored in the MIN sample register **252**, and the maximum sample will be stored in the MAX sample register **254**.

In addition to determining the minimum and maximum sample values, the circuitry also determines an average sample value. To this end, as the samples are acquired, the samples are also provided to an adder **264** which cooperates with an accumulate and shift register circuit **266**. The accumulate and shift register **266**, which is initially set equal to zero, adds each sample to the previously acquired samples. When all of the samples have been acquired, the accumulate and shift register **266** outputs a value that is equal to the summation of all acquired samples. The resulting value is shifted by 2, 3, 4, or 5 places to divide by the number of samples. This is achieved using the tap circuit **267**, which receives a 17 bit input and outputs only the twelve most significant bits (i.e., for division by 32). In other words, if thirty-two (i.e., 2^5) samples are acquired, then discarding the first five bits of the output of the accumulate and shift register **266** effectively divides the output of the register **266** by thirty-two and produces an average sample value. The average sample value is then considered to be the value that describes the X-position of the touch.

At step **206**, it is determined whether the difference between the maximum and minimum X samples is less than a predetermined maximum deviation. In other words, as previously mentioned, all of the acquired samples should indicate that the touch occurred at approximately the same location on the touch screen, otherwise the data set as a whole is suspect and should be discarded. This range checking function allows a data set to be screened for erroneous data points (possibly caused by noise) that would adversely affect an average value.

It may be noted that, when the analog switch matrix **104** is in the configuration shown in FIG. 8A, relatively little power is dissipated as compared to when the analog switch matrix **104** is in a configuration usable for scanning (as in FIGS. 8C and 8D, discussed below). When the switch matrix

18

is in a scanning configuration, current flows to the X-axis and Y-axis resistive layers (i.e., in the case of a 4-wire or 8-wire touch screen). Specifically, an initial current flows when the scanning voltage is first applied, causing a charge to be established on the X-axis and Y-axis resistive layers (which in combination initially behave as a capacitor). Once the charge is established, current also flows from the X+bus bar to the X- bus bar when a scanning signal is applied to scan the X-axis, and from the Y+bus bar to the Y- bus bar when a scanning signal is applied to scan the Y-axis. In the case of a 5-wire touch screen, current flows between each of the four terminals. This current flow in turn causes power to be dissipated. In contrast, when the analog switch matrix **104** is in a touch detect configuration (as in FIG. 8A), relatively little or no current flows to the X-axis and Y-axis layers from the analog switch matrix **104** (as compared to the current that flows while the analog switch matrix **104** is in configuration shown in FIGS. 8C and 8D). Therefore, relatively little or no power is dissipated by the X-axis and Y-axis resistive layers (as compared to the power that is dissipated while the analog switch matrix **104** is in the configuration shown in FIGS. 8C and 8D).

In practice, in FIG. 7, step **206** is performed in the following manner: First, the value stored in the MIN register **252** is subtracted from the value stored in the MAX register **254**. This is accomplished by providing the value in the MIN sample register **252** to a multiplexor **272** and providing the value stored in the MAX sample register **254** to a multiplexor **270**. The multiplexors **270** and **272** pass the maximum and minimum sample values, respectively, to a subtractor circuit (or any other form of comparator circuit) **274**. The difference is then compared to the predetermined maximum deviation XDEV stored in the register **280**. This is achieved by providing the output of the subtractor circuit **274** to a multiplexor **276** which passes the difference to a comparator **278**. The comparator **278** compares the difference to the value XDEV provided by a deviation register **280** by way of a multiplexor **282**. If the range exceeds the deviation allowed, the results are disregarded and the logic circuit **250** starts over with initialization and generating a new X sample set.

At step **208**, it is determined whether an XINT flag is set. On the initial pass through the process of FIG. 6, the XINT flag is not set and the process proceeds to step **210**. As will become apparent, this flag is set when the process proceeds from step **210** to step **212**, allowing step **210** to be skipped thereafter.

At step **210**, a comparison is made between the new X average sample value (X) (that is, the average X sample value determined in step **204**) and the last valid X average sample value (XLAST) (that is, the average X sample determined during the previous successful iteration of step **204**). Specifically, the difference (X-XLAST) between these two values is compared against the XMIN value stored in the XMIN register **290**. In FIG. 7, this step is performed by providing the output of the tap circuit **267** to the subtractor circuit **274** by way of the multiplexor **272**, and by providing the value stored in the LAST X register **286** to the subtractor circuit **274** by way of the multiplexor **270**. The output of the subtractor circuit **274** is then provided to the comparator **278** by way of the multiplexor **282**. The comparator **278** compares the difference to the value stored in the XMIN register **290**, which is received at the comparator **278** by way of the multiplexor **276**.

If the difference between the new X value (X) and the last X value (XLAST) is less than the XMIN value, then this indicates that the movement in the X direction is not

significant enough to warrant alerting the microprocessor **86**. Therefore, the process proceeds to step **224** (discussed below), which is the beginning of the scanning process for the Y-axis.

If the difference between the new X value (X) and the last X value (XLAST) is not less than the XMIN value, then this indicates that the movement in the X direction is significant enough to warrant alerting the microprocessor **86** (that is, so long as the movement in the Y-direction is also significant enough to warrant alerting the microprocessor, as discussed below). The process in this event proceeds to step **212**, where the difference between the new X value (X) and the last X value (XLAST) is compared to the XMAX value in the XMAX register **292**. The purpose of this step is to verify that any movement in the touch location is not so large as to be unrealistic.

In FIG. 7, step **212** is performed by comparing the output of the subtractor circuit **274** (X-XLAST) to the value stored in the XMAX register **292**, which is received by way of the multiplexor **282**. If the difference is greater than XMAX, it is assumed that this distance is too far for a touch input to possibly move in the short scan time interval and that the key press is invalid. However, at step **214**, the new X value is stored as the LAST X register (that is, XLAST is set equal to X) in case a truly new location was determined. The XINT flag is also set to cause the algorithm to skip step **210** on consecutive sample sets. This flag will also cause a processor interrupt after valid X and Y samples have been established. The algorithm then starts over discharging, and sampling a new X-axis value.

If the difference in step **212** is less than the XMAX, then the process proceeds to step **216**. At step **216**, just as in step **214**, the new X value is stored as the LAST X register (that is, XLAST is set equal to X) and the XINT flag is also set to cause the algorithm to skip step **210** on consecutive sample sets. After step **216**, unlike after step **214**, the process then proceeds to step **224**, where scanning of the Y-axis begins. In the exemplary process of FIG. 6, both the XINT flag and the YINT flag must be set in order for an event notification (such as a hardware interrupt) to be issued to the microprocessor **86**.

Except to the extent that a different axis is scanned, scanning of the Y-axis is identical to the scanning of the X-axis, and therefore the process will be described more briefly. The circuitry in FIG. 7 is used as previously described, except that registers **294**, **296** and **298** are used instead of registers **286**, **290**, and **298**, respectively.

Scanning of the Y-axis begins at step **224**. FIG. 8D shows the configuration of the analog switch matrix **104** for a 4-wire touch screen to apply a voltage to the touch screen sensor circuitry to scan the Y-axis. Again, 4, 8, 16 or 32 samples are acquired, and the maximum sample value, the minimum sample value, and an average sample value are determined and stored.

At step **226**, it is determined whether the difference between the maximum and minimum Y samples is less than a predetermined maximum deviation. As previously described, this range checking function allows a data set to be screened for erroneous data points (possibly caused by noise) that would adversely affect an average value. If the range exceeds the deviation allowed, the results are disregarded and the logic circuit **250** starts over with initialization and generating a new sample set at step **224**.

At step **228**, it is determined whether a YINT flag is set. On the initial pass through the process of FIG. 6, the YINT flag is not set and the process proceeds to step **210**. The YINT flag serves the same purpose as the XINT flag as

described above, except that it is used in connection with the Y-axis portion of the process of FIG. 6.

At step **230**, a comparison is made between the new Y average sample value (Y) (that is, the average Y sample value determined in step **224**) and the last valid Y average sample value (YLAST) (that is, the average Y sample value determined during the previous iteration of step **204**). Specifically, the difference (Y-YLAST) between these two values is compared against a YMIN value. If the difference (Y-YLAST) is less than the YMIN value, then this indicates that the movement in the Y direction is not significant enough to warrant alerting the microprocessor. Therefore, the process proceeds to step **236** to determine whether the XINT flag is set. If the XINT flag is set, then at step **238** the new Y value is stored as the LAST Y register (that is, YLAST is set equal to Y), the microprocessor is notified, and the new X and Y values are read by the microprocessor and the XINT and YINT flags are cleared. Thereafter, the process returns to step **202** and waits for another touch press. Otherwise, if the XINT flag is not set at step **236**, then the process proceeds to step **204** to rescan to X axis.

If the difference (Y-YLAST) is not less than the YMIN value, then this indicates that the movement in the Y direction is significant enough to warrant alerting the microprocessor. The process in this event proceeds to step **232**, where the difference between the new Y value (Y) and the last Y value (YLAST) is compared to the YMAX value. The purpose of this step is to verify that the distance of Y movement is not so large as to be unrealistic given the short scan time interval.

If the difference in step **232** is greater than YMAX, then at step **234** the new Y value is stored as the LAST Y register (that is, YLAST is set equal to Y) in case a truly new location was determined. The YINT flag is also set to cause the algorithm to skip step **230** on consecutive sample sets.

If the difference in step **232** is less than the YMAX, then the process proceeds to step **238**. At step **238**, just as in step **214**, the new Y value is stored as the LAST Y register (that is, YLAST is set equal to Y) and the YINT flag is also set. When either interrupt flag is set, the microprocessor is notified, and the new X and Y values are read by the microprocessor and the XINT and YINT flags are cleared. Thereafter, the process returns to step **202** and waits for another touch press.

As has been described, rather than sending a continuous information stream to the microprocessor when the touch screen is in use, the logic circuit **250** interrupts the microprocessor only when touch screen movement is sufficiently significant in order to minimize intervention of the microprocessor in the scanning process. FIG. 9 presents a simplified graphical representation of this arrangement. As shown in FIG. 9, the values XMIN and YMIN (stored in the registers **290** and **296**) define a region **299** that surrounds the current location of a mouse pointer **298**. The microprocessor **86** is not notified unless a touch is detected at a location outside the perimeter of the region **299**.

4. Exemplary Application

Referring now to FIG. 10, the system-on-chip integrated circuit **70** of FIG. 2 is usable in a wide array of applications. FIG. 10 illustrates the system-on-chip integrated circuit **70** employed in an operator interface **300** of a legacy configuration for an industrial control system. In addition to the operator interface, the industrial control system comprises a plurality of input and output devices **302**, a communication network **304**, a rack-mounted programmable controller system **306**. The operator interface **300** could also be used in connection with non-rack mounted devices such as soft

PLCs. In addition to these components, the industrial control system may include a wide array of additional components.

The programmable controller system 306 comprises a control module 308. The control module 308 executes a user program to control output status of the plurality of output devices based on input status information from the plurality of input devices.

The programmable controller system 306 and the operator interface 300, which may also be rack-mounted, are coupled to each other by way of the communication network 304. The operator interface 300 includes a touch screen that includes a display 310 and a touch screen sensor system such as shown in FIGS. 1A–1D. The display 310 displays the input and output status of at least a portion of the plurality of input and output devices 302. The touch screen may, for example, be a 4-wire, 5-wire, 7-wire, or 8-wire touch screen, each of which uses a different sensor system as previously discussed.

The operator interface 300 is provided with a system-on-chip integrated circuit 70. The integrated circuit 70 therefore includes the circuitry discussed above in connection with the preferred touch screen interface circuit 100, including an analog switch matrix 104, digital signal processor, communication network interface, display interface, and so on (see FIGS. 2–3 and 7). As previously discussed, the analog switch matrix 104 is coupled to the touch screen sensor system and has a plurality of different configurations. The analog switch matrix receives power supply inputs (V_{DD} , V_{SS}) and selectively supplies these input to the touch screen sensor system based on the configuration of the analog switch matrix 104. The digital signal processor determines the touch screen type based on the response of the touch screen to the input in the plurality of different configurations of the analog switch matrix, for example, as discussed in connection with FIGS. 4 and 5A–5D. The digital signal processor can also process the input data samples from the touch screen, for example, as discussed above in connection with FIGS. 6–7.

Referring now to FIG. 11, FIG. 11 illustrates the system-on-chip integrated circuit 70 employed in an operator interface 400 that may also be used as a soft controller in the industrial control system. In addition to the operator interface, the industrial control system also comprises a plurality of input and output devices 401, and multiple data or control networks 402. In addition to these components, the industrial control system may include a wide array of additional components.

In addition to providing operator controls and displaying status, the operator interface 400 also executes a user program to control output status of the plurality of output devices based on input status information from the plurality of input devices. Thus, the operator interface 400 of FIG. 11 combines the functions of the programmable controller system 306 and the operator interface 300 of FIG. 10 in a single integrated package.

The operator interface 400 preferably includes a touch screen sensor system such as shown in FIGS. 1A–1D. The operator interface 400 may or may not contain a dynamic display 410 that will display the input and output status of at least a portion of the plurality of input and output devices 401. As an alternative to a display, a fixed graphic underlay may be used to represent the plurality of input and output devices 401. In either case, the touch plane operator input device may, for example, be a 4-wire, 5-wire, 7-wire, or 8-wire device, each of which uses a different sensor system as previously discussed.

The operator interface 400 is provided with a system-on-chip integrated circuit 70. The integrated circuit 70 therefore

includes the circuitry discussed above in connection with the preferred touch screen interface circuit 100, including an analog switch matrix 104, digital signal processor, communication network interface, display interface, and so on (see FIGS. 2–3 and 7). As previously discussed, the analog switch matrix 104 is coupled to the touch screen sensor system and has a plurality of different configurations. The analog switch matrix receives power supply inputs (V_{DD} , V_{SS}) and selectively supplies these input to the touch screen sensor system based on the configuration of the analog switch matrix 104. The digital signal processor determines the touch screen type based on the response of the touch screen to the input in the plurality of different configurations of the analog switch matrix, for example, as discussed in connection with FIGS. 4 and 5A–5D. The digital signal processor can also process the input data samples from the touch screen, for example, as discussed above in connection with FIGS. 6–7.

In addition to the applications illustrated in FIG. 10 and FIG. 11, numerous additional applications are also possible. For example, the integrated circuit 70 can be used in connection with personal digital assistants and other palm-held computers, as well as internet access devices, laptop computers, point of sale terminals, input only touch pads for larger displays or virtual headsets, consumer appliances, entertainment systems and other commercial and industrial applications. Indeed, in FIG. 10, the operator interface 300 may be coupled to the internet to permit firmware revisions to be downloaded from a manufacturer of the programmable controller system.

Many other changes and modifications may be made to the present invention without departing from the spirit thereof. The scope of these and other changes will become apparent from the appended claims.

What is claimed is:

1. An interface circuit for a touch plane operator input device, comprising a digital signal processor that includes a data processing path along which input data from a touch plane operator input device passes while being processed by the digital signal processor, wherein the interface circuit is capable of receiving input data in a first signal format from a first type of touch plane operator input device and input data in a second signal format from a second type of touch plane operator input device, the first signal format being different from the second signal format, and the first type of touch plane operator input device being different from the second type of touch plane operator input device, wherein the interface circuit is capable of processing input data from the first and second types of touch plane operator input devices, and wherein the data path is a common data processing path that is the same for input data from the first and second types of touch plane operator input devices, wherein the first type of touch plane operator input device is an 8-wire touch plane operator input device and the second type of touch plane operator input device is one of a 4-wire touch plane operator input device and a 5-wire touch plane operator input device.

2. An interface circuit according to claim 1, wherein the first and second different types of touch plane operator input devices are both analog resistive touch plane operator input devices.

3. An interface circuit according to claim 1, wherein the interface circuit is capable of receiving input data in third and fourth signal formats from third and fourth types of touch plane operator input devices, wherein the third type of touch plane operator input device is a 7-wire touch plane operator input device and the fourth type of touch plane

23

operator input device is the other of the 4-wire touch plane operator input device and the 5-wire touch plane operator input device.

4. An interface circuit according to claim 1, wherein the common data processing path includes an adder circuit that adds successive input data samples to produce a summation of the data samples, and a divider circuit that divides the summation of the input data samples to determine an average data sample location.

5. An interface circuit according to claim 4, wherein the common data processing path includes a comparator circuit that compares successive input data samples to determine a minimum input data sample and a maximum input data sample.

6. An interface circuit according to claim 5, wherein the common data processing path includes a comparator circuit that compares the minimum input data sample with the maximum input data sample range.

7. An interface circuit according to claim 6, wherein the common data processing path includes a comparator circuit that compares the sample range to a predetermined maximum sample range.

8. An interface circuit according to claim 1, wherein the interface circuit further comprises an analog switch matrix, the analog switch matrix having a plurality of analog switches and having a plurality of different configurations defined by on/off states of the plurality of analog switches; and

wherein, in some of the plurality of different configurations, the interface circuit is capable of processing data from the first type of touch plane operator input device and, in other configurations, the interface circuit is capable of processing information from the second type of touch plane operator input device.

9. The interface circuit of claim 1, wherein the digital signal processor is located on a system-on-chip integrated circuit chip, and wherein the integrated circuit chip also has a microprocessor located thereon.

10. A method of acquiring and evaluating information from a touch plane operator input device comprising:

- (a) acquiring a plurality of data samples from the touch plane operator input device;
- (b) determining a minimum sample;
- (c) determining a maximum sample; and
- (d) comparing a difference between the minimum sample and the maximum sample with a predetermined maximum amount;

wherein steps (a)–(d) are performed by discrete logic circuitry that defines a data processing path in an integrated circuit;

wherein the integrated circuit is capable of operation in connection with a plurality of different types of touch plane operator input devices; and

wherein the same data processing path is used for acquiring and evaluating the information from the touch plane operator input device regardless of which type of touch plane operator input device is used.

11. An interface circuit comprising:

an analog switch matrix, the analog switch matrix having an input port capable of being coupled to, and receiving input data from, anyone of a plurality of touch plane operator input devices including an 8-wire touch plane operator input device and also another type of touch plane operator input device, the analog switch matrix further having a plurality of analog switches and a plurality of different configurations defined by on/off states of the plurality of analog switches;

24

an analog-to-digital converter, the analog-to-digital converter being coupled to receive analog input data in a generic format based upon the input data from the analog switch matrix and to produce digital input data based thereon; and

a digital signal processor, the digital signal processor being coupled to receive the digital input data from the analog-to-digital converter, the digital signal processor including a data processing path along which the digital input data passes while being processed by the digital signal processor.

12. An integrated circuit device, the integrated circuit device comprising:

an analog switch matrix, the analog switch matrix having a plurality of analog switches and having a plurality of different configurations defined by on/off states of the plurality of analog switches,

an analog-to-digital converter, the analog-to-digital converter being coupled to receive the input data from the analog switch matrix, and

a digital signal processor coupled to the analog-to-digital converter;

wherein the analog switch matrix is capable of receiving the input data from any one of a plurality of types of touch screens, and

wherein the analog switch matrix provides the input data to the analog-to-digital converter in a generic signal format that remains the same regardless of the type of touch screen providing the input data,

wherein the analog switch matrix has a first output that is connected to an input terminal of the analog-to-digital converter, and a second output that is connected to a first reference terminal of the analog-to-digital converter.

13. The device of claim 12, wherein the first reference terminal is a Ref+ terminal, and wherein the analog switch matrix additionally includes a third output that is connected to a Ref-terminal of the analog-to-digital converter.

14. The device of claim 13, wherein the analog switch matrix includes twenty-seven switches.

15. An integrated circuit device, the integrated circuit device comprising:

an analog switch matrix, the analog switch matrix having a plurality of analog switches and having a plurality of different configurations defined by on/off states of the plurality of analog switches,

an analog-to-digital converter, the analog-to-digital converter being coupled to receive the input data from the analog switch matrix, and

a digital signal processor coupled to the analog-to-digital converter;

wherein the analog switch matrix is capable of receiving the input data from any one of a plurality of types of touch screens, and

wherein the analog switch matrix provides the input data to the analog-to-digital converter in a generic signal format that remains the same regardless of the type of touch screen providing the input data,

wherein the analog switch matrix has eight inputs by which the analog switch matrix is capable of receiving input signals from any of a 4-wire touch screen, a 5-wire touch screen, a 7-wire touch screen and an 8-wire touch screen.

16. An integrated circuit device, the integrated circuit device comprising:

25

an analog switch matrix, the analog switch matrix having a plurality of analog switches and having a plurality of different configurations defined by on/off states of the plurality of analog switches,

an analog-to-digital converter, the analog-to-digital converter being coupled to receive the input data from the analog switch matrix, and

a digital signal processor coupled to the analog-to-digital converter;

wherein the analog switch matrix is capable of receiving the input data from any one of a plurality of types of touch screens, and

wherein the analog switch matrix provides the input data to the analog-to-digital converter in a generic signal format that remains the same regardless of the type of touch screen providing the input data,

wherein the digital signal processor includes:

- an adders circuit that adds successive input data samples to produce a summation of the data samples;
- a divider circuit that divides the summation of the input data samples to determine an average data sample location;
- a comparator circuit that compares successive input data samples to determine a minimum input data sample and a maximum input data sample; and
- a comparator circuit that compares the minimum input data sample with the maximum input data sample to a sample range.

17. The method of claim 10, further comprising:

(e) comparing a difference between a new average sample and a previous average sample to determine a difference therebetween.

18. An apparatus for receiving and processing touch screen data, the apparatus comprising:

- an input port capable of being coupled to, and receiving input signals from, any one of at least three different types of touch screens, wherein each of the received input signals is in a respective signal format corresponding to the type of touch screen from which the input signals were received;
- a first circuit capable of converting the input signals into intermediate signals having a generic format regardless of the type of touch screen providing the input signals; and
- a second circuit capable of processing the intermediate signals in the generic format, wherein the processing by the second circuit remains the same regardless of the type of touch screen providing the input signals upon which the intermediate signals are based,

wherein the input port is capable of receiving the input signals from an 8-wire touch screen and also from at least two of a 4-wire touch screen, a 5-wire touch screen and a 7-wire touch screen.

19. An apparatus for receiving and processing touch screen data the apparatus comprising:

- an input port capable of being coupled to and receiving input signals from, any one of at least three different types of touch screens, wherein each of the received input signals is in a respective signal format corresponding to the type of touch screen from which the input signal were received;

26

- a first circuit capable of converting the input signals into intermediate signals having a generic format regardless of the type of touch screen providing the input signals; and
- a second circuit capable of processing the intermediate signals in the generic format, wherein the processing by the second circuit remains the same regardless of the type of touch screen providing the input signals upon which the intermediate signals are based,

wherein the input port includes at least eight terminals by which an 8-wire touch screen can be coupled to the input port.

20. An apparatus for receiving and processing touch screen data the apparatus comprising:

- an input port capable of being coupled to, and receiving input signals from, any one of at least three different types of touch screens wherein each of the received input signals is in a respective signal format corresponding to the type of touch screen from which the input signals were received;
- a first circuit capable of converting, the input signals into intermediate signals having a generic format regardless of the type of touch screen providing the input signals; and
- a second circuit capable of processing the intermediate signals in the generic format wherein the processing by the second circuit remains the same regardless of the type of touch screen providing the input signals upon which the intermediate signals are based,

wherein the first circuit includes an analog switch matrix that includes more than five switches.

21. The apparatus of claim 20, wherein the first circuit additionally includes an analog-to-digital converter, wherein the analog switch matrix is coupled to at least an input terminal and a reference terminal of an analog-to-digital converter.

22. An apparatus for receiving and processing touch screen data, the apparatus comprising:

- an input capable of being coupled to, and receiving input signals from, any one of at least three different types of touch screens, wherein each of the received input signals is in a respective signal format corresponding to the type of touch screen from which the input signals were received;
- a first circuit capable of converting the input signals into intermediate signals having a generic format regardless of the type of touch screen providing the input signals; and
- a second circuit capable of processing the intermediate signals in the generic format, wherein the processing by the second circuit remains the same regardless of the type of touch screen providing the input signals upon which the intermediate signals are based,

wherein the second circuit includes processing circuitry that performs a plurality of processing operations upon the intermediate signals, wherein the plurality of processing operations includes calculating a range based upon a minimum input value and a maximum input value, and comparing the range with a predetermined maximum deviation value.

* * * * *