

SMART
POWER DESIGN



SMART
POWER
DESIGN

GEAR SHIFT KNOB
SMART FORTWO 450 AND
451

User Manual | Smart Power Design

Gear Shift Knob Smart Fortwo 450 And 451



Photo 1: The Gear Shift Knob in chrome finish by Smart Power Design.

All work should be performed with the utmost care to avoid any damage.

Please check that the parts listed are complete before starting the installation.

The first instructions are for the Gear Shift Knob with one color LED light and then with 3 different color LED light.

Parts List

1 x Gear Shift Knob
(one color LED light
or three different
color LED light)

Instructions

1. Run the cable from above through the console, through the cover cap on the shifter rod and through the spring.
2. Please take care to keep the two cables through the gap to the gearshift rod and put the gearshift lever to the shifter rod and screw with the hex key.
3. Then connect the brown cable on the ground (one point is on the bottom left of the driver), the red cable run to the fuse box and connect with the supplied connector to the position 1 to 4 (see photo) and the end sat of a 5A fuse.

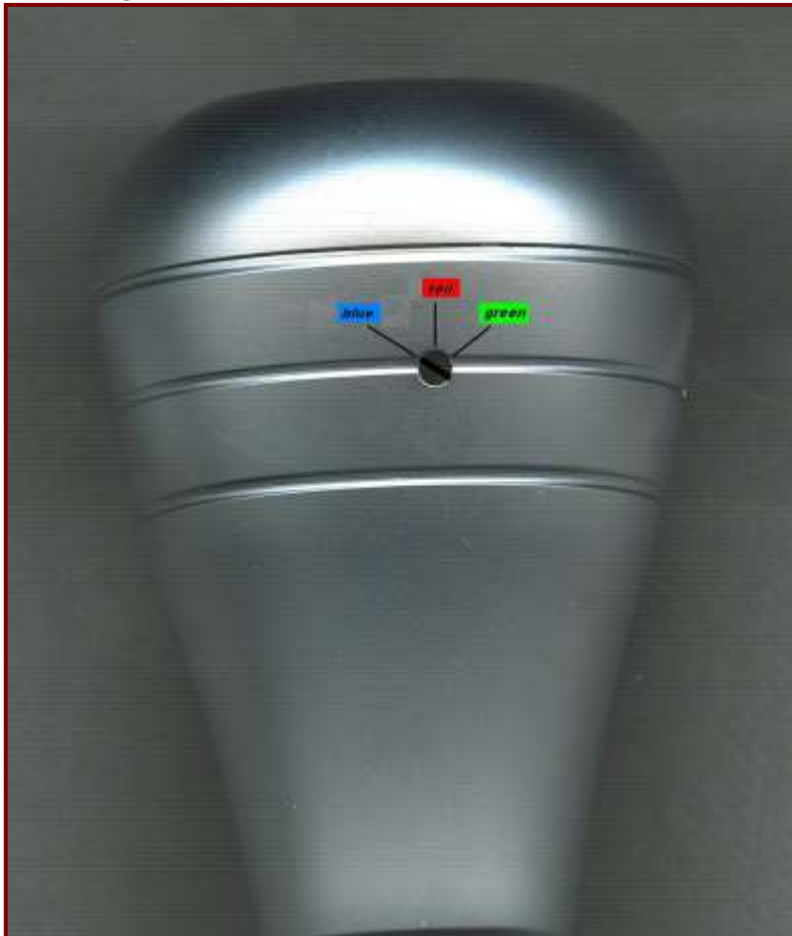


The illumination color can change with the use of a screwdriver. Put the screwdriver into the hole (see photo below) and then turn it. It has 3 different places

Place 1 for blue color

Place 2 for red color

Place 3 for green color



This is for the Gear Shift Knob with 3 different LED light colors.



Enjoy what you have just installed! We hope that you are not going to like it but to love it as it fits perfectly on your lovely Smart Fortwo 451.

We would like to thank you for purchasing from Smart Power Design.



Company Information

Smart Power Design
Möhringer Str. 93 – Stuttgart
Zip: 70199 – Germany

Email: info@smart-power-design.de
sales@smart-power-design.de

Telephone: 0049 711 217 20291

Website: www.smart-power-design.de

Follow us





Company Information

Smart Power Design
Möhringer Str. 93 – Stuttgart
Zip: 70199 – Germany

Email: info@smart-power-design.de
sales@smart-power-design.de

Telephone: 0049 711 217 20291

Website: www.smart-power-design.de

Follow us

