

## DataTraveler® 4000 User Manual



## Table of Contents

About This Manual .....	3
System Requirements.....	3
Recommendations .....	3
Setup (Windows Environment).....	4
Device Initialization (Windows Environment) .....	5
Device Usage (Windows Environment) .....	9
Device Options (Windows Environment).....	10
Setup (Mac Environment) .....	12
Device Initialization (Mac Environment) .....	13
Device Usage (Mac Environment) .....	17
Device Options (Mac Environment) .....	18
Help and Troubleshooting .....	20
Device Lockout.....	20
Forgot Password.....	21
Drive Letter Conflict (Windows Operating Systems).....	22

## About This Manual

This user manual covers the DataTraveler® 4000 (referred to simply as DT4000 from this point forward) based on the factory image with no implemented customizations.

## System Requirements

### PC Platform

- Pentium III Processor or equivalent (or faster)
- 15MB free disk space
- USB 2.0
- Two consecutive drive letters after the last physical drive\*

### PC Operating System Support

- Windows® 7
- Windows® Vista SP1, SP2
- Windows® XP SP2, SP3

### Mac Platform

- 15MB free disk space
- USB 2.0

### Operating System Support

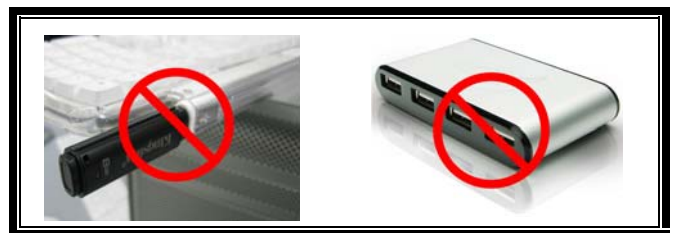
- Mac OS X 10.5.x
- Mac OS X 10.6.x

## Recommendations

To ensure there is ample power provided to the DT4000 device, insert it directly into a USB port on your notebook or desktop, as seen in **Figure 1.1**. Avoid connecting the DT4000 to any peripheral device(s) that may feature a USB port, such as a keyboard or USB-powered hub, as seen in **Figure 1.2**.



**Figure 1.1 – Recommended Usage**



**Figure 1.2 – Not Recommended**

*\*Note: See 'Drive Letter Conflict' on Page 22.*

## Setup (Windows Environment)

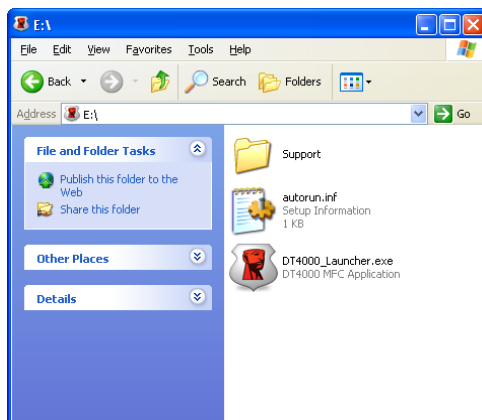
1. Insert the DT4000 into an available USB port on your notebook or desktop and wait for Windows to detect it.
  - Windows XP users will receive a 'Found New Hardware' notification as seen in **Figure 2.1**.
  - Windows Vista/7 users will receive a device driver notification as seen in **Figure 2.2**.

Once the new hardware detection is complete, Windows will prompt you to begin the initialization process.

- Windows XP users can skip step 2 and go to page 5 – **Device Initialization**.
- Windows Vista/7 users will see an AutoPlay window similar to the one in **Figure 2.3**.

2. Select the option 'Run DT4000\_Launcher.exe'.

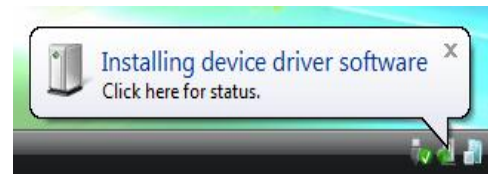
If Windows does not AutoPlay, you can browse to the CD-ROM partition (**Figure 2.4**) and manually execute the DT4000\_Launcher program. This will also start the initialization process.



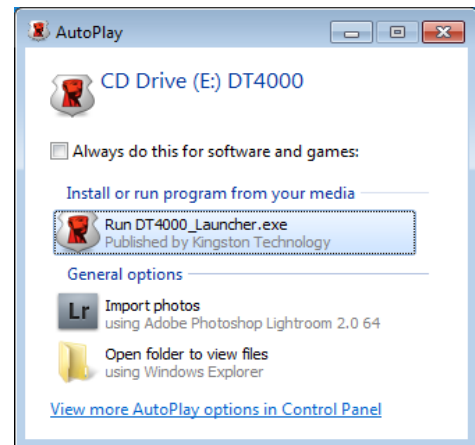
**Figure 2.4 – DT4000 Contents**



**Figure 2.1 – Found New Hardware (Windows XP)**



**Figure 2.2 – Device Driver Installation (Windows Vista/7)**



**Figure 2.3 – AutoPlay Window (Windows Vista/7)**

(Note: Menu options in the AutoPlay window may vary depending on what programs are currently installed on your computer. AutoRun will start the initialization process automatically.)

## Device Initialization (Windows Environment)

1. Select your language preference from the drop-down menu and click 'Next' (**Figure 3.1.**)



**Figure 3.1 – Language Selection**

2. Review the license agreement and click 'Next' (**Figure 3.2.**) (Note: You must accept the license agreement before continuing; otherwise the 'Next' button will remain disabled.)



**Figure 3.2 – License Agreement**

3. Create a password to protect your data on the DT4000. Enter it in the 'Password' field, then re-enter it in the 'Password Confirmation' field, as seen below in **Figure 3.3**. The password you create must meet the following criteria before the initialization process will allow you to continue:

1. Passwords must contain 6 characters or more (up to 16 characters.)
2. Passwords must contain three (3) of the following criteria options:
  - UPPER CASE, lower case, numeric, and/or special characters (!, \$, etc.)

You may also enter a password hint, but it is not a mandatory field. The hint field can be useful in providing a clue as to what the password is, should the password ever be forgotten. (*Note: The hint CANNOT be an exact match to the password.*)



**Figure 3.3 – Password Setup**

4. Enter your contact information into the text boxes provided (see **Figure 3.4**) (Note: The information you enter in these fields may **NOT** contain the password string you created in Step 3. However, these fields are optional and can be left blank, if so desired.)
- The 'Name' field may contain up to 32 characters, but cannot contain the **exact** password.
  - The 'Company' field may contain up to 32 characters, but cannot contain the **exact** password.
  - The 'Details' field may contain up to 156 characters, but cannot contain the **exact** password.



Device Initialization - DT4000

DataTraveler<sup>®</sup>  
4000

1 2 3 4

Contact Information

Name: Test Name

Company: Test Company

Details: Test Details & Other Info

Kingston  
TECHNOLOGY

<Back Finish Cancel

**Figure 3.4 – Contact Information**

5. Click 'Finish' to complete the device initialization process.

The DT4000 will now format the secure data partition (**Figure 3.5**) and notify you when it is complete (**Figure 3.6**.)

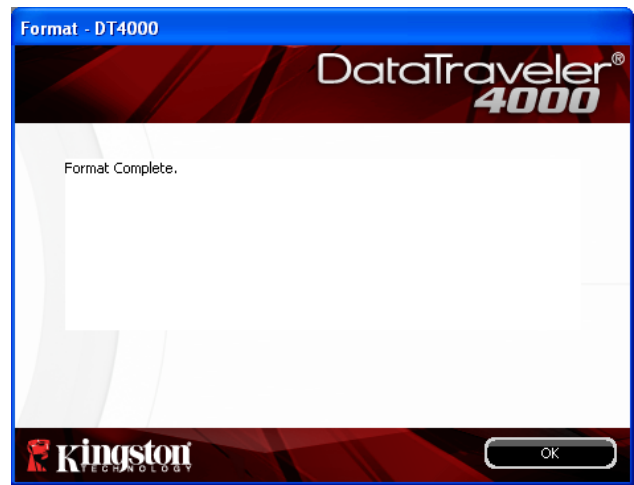


**Note:** If operating under Windows XP in Non-Admin mode, the ‘Format’ routine can take up to a minute.\*

6. Click ‘OK’ to continue.



**Figure 3.5 – Formatting DT4000**



**Figure 3.6 – Format Complete**

Initialization complete.

*\*Note: Times may vary based on system hardware and the capacity of the DT4000 drive.*



## Device Usage (Windows Environment)

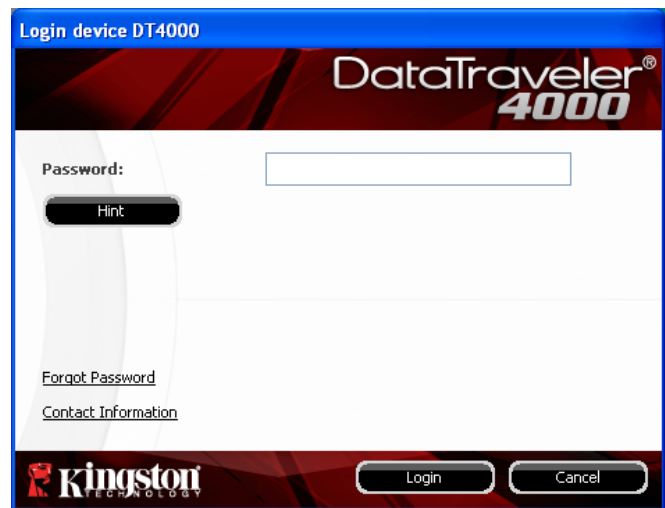
Once the DT4000 has been initialized, you can access the secure data partition and utilize the device options by logging into the device with your password. To do so, follow these steps:

1. Insert the DT4000 into a USB port on your notebook or desktop and enter your password (see **Figure 4.1.**)
2. Once you've typed your password, click the 'Login' button to continue.
  - If the correct password is entered, the DT4000 will unlock and you can begin using the device.
  - If an incorrect password is entered, an error message will appear just below the 'Hint' field, indicating a login failure (see **Figure 4.2.**)

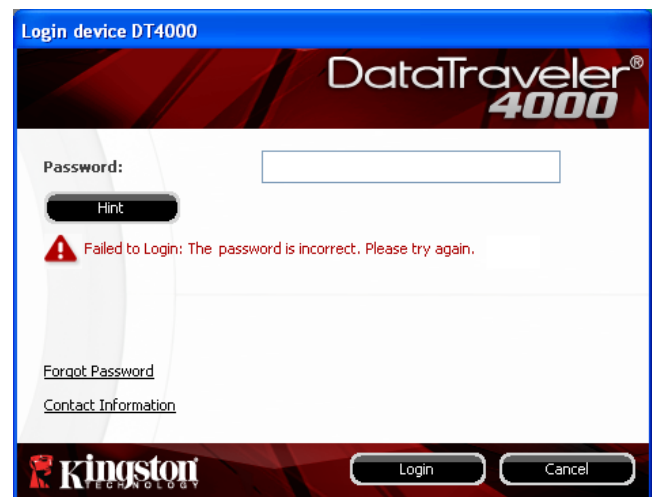
During the login process, if a bad password is entered, you will be given another opportunity to enter the correct password; however, there is a built-in security feature that tracks the number of failed login attempts\*. If this number reaches the pre-configured value of 10 failed attempts, the DT4000 will lock and require a device format of the secure data partition prior to next use.

 **THIS MEANS THAT ALL DATA STORED ON THE DT4000 WILL BE LOST.**

For more details on this feature, see 'Device Lockout' on page 20.



**Figure 4.1 – Login Window**



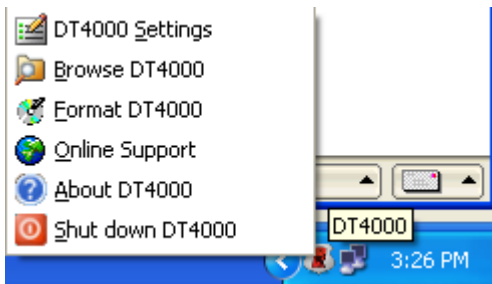
**Figure 4.2 – Login Failure**

*\*Note: Once you authenticate to the device successfully, the failed login counter will reset.*

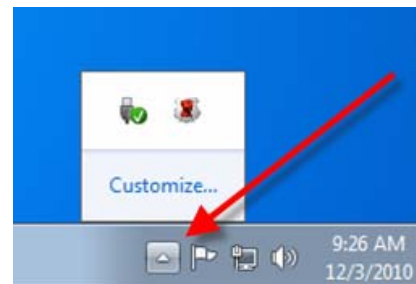
## Device Options (Windows Environment)

While you are logged into the device, there will be a 'DT4000' icon located in the right-hand corner of the Windows taskbar (**Figure 5.1**). (Note: Windows 7 users will need to click on the up-arrow button in the taskbar in order to access the 'DT4000' icon (**Figure 5.2**).

Clicking once on the DT4000 icon will display the following menu:



**Figure 5.1 – DT4000 icon in taskbar**

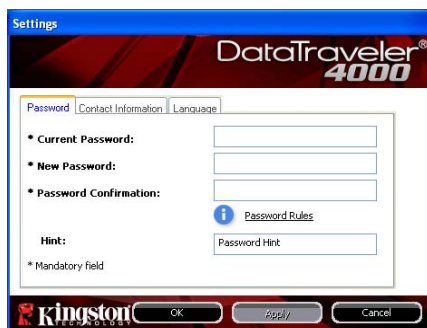


**Figure 5.2 – DT4000 icon in taskbar (Windows 7 users)**

## DT4000 Settings

- Allows you to change your password and/or hint (**Figure 5.3**)
- Allows you to add/view/change your contact information (**Figure 5.4**)
- Allows you to change your current language selection (**Figure 5.5**)

(Note: For security purposes, your current DT4000 password is required to update and/or modify any of these settings.)



**Figure 5.3  
Change Password**



**Figure 5.4  
Contact Information**



**Figure 5.5  
Select Language**

## Browse DT4000

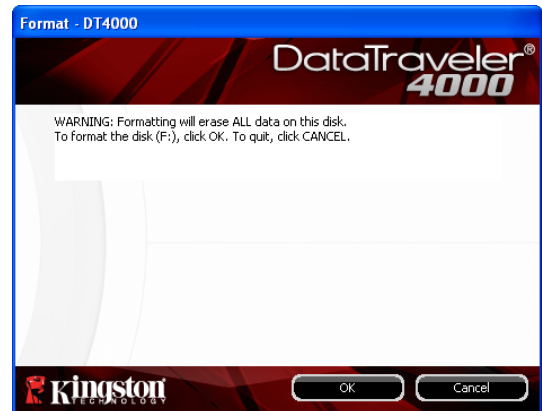
- Allows you to browse the contents of the secure data partition while you are logged in

## Format DT4000\*

- Allows you to format the secure data partition (Warning: All data will be erased.) (**Figure 5.6**)

## Online Support (Requires Internet access)

- Opens your Internet browser and navigates to <http://www.kingston.com/support/> where you can access additional support information



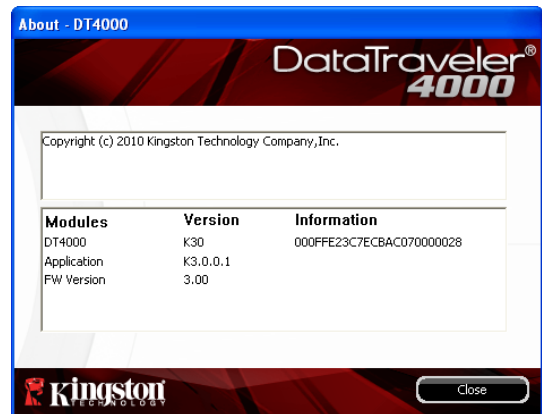
**Figure 5.6 – Format Warning**

## About DT4000

- Provides specific details about the DT4000, including Application and Firmware version information (**Figure 5.7**)

## Shutdown DT4000

- Properly shuts down the DT4000, allowing you to safely remove it from your system



**Figure 5.7 – About DT4000**

*\*Note: Your current DT4000 password is required in Windows Vista and Windows 7*

**-Windows Section Complete-**

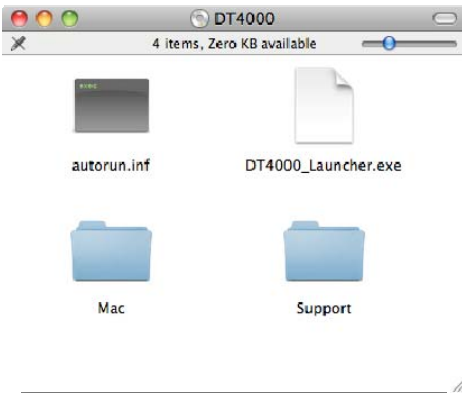
## Setup (Mac Environment)

Insert the DT4000 into an available USB port on your notebook or desktop and wait for the Mac operating system to detect it. When it does, you will see a DT4000 volume appear on the desktop, as seen in **Figure 6.1**.



**Figure 6.1 – DT4000**

1. Double-click the DT4000 CD-ROM icon.
2. Double-click the Mac folder found in the window displayed in **Figure 6.2**.
3. Double-click the DT4000 application icon found in the window displayed in **Figure 6.3**. This will start the initialization process.



**Figure 6.2 – DT4000 Contents**



**Figure 6.3 – DT4000 Application**



## Device Initialization (Mac Environment)

1. Select your language preference from the drop-down menu and click 'Next' (**Figure 7.1.**)



**Figure 7.1 – Language Selection**

2. Review the license agreement and click 'Next' (**Figure 7.2.**) (Note: You must accept the license agreement before continuing; otherwise the 'Next' button will remain disabled.)

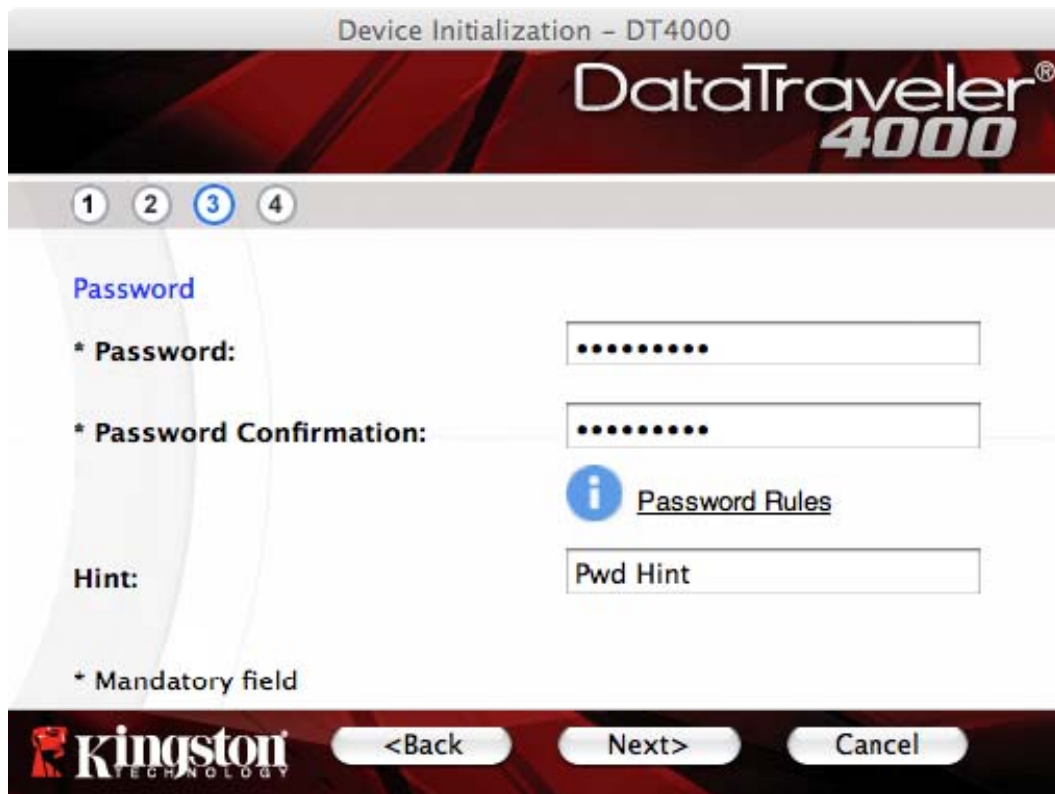


**Figure 7.2 – License Agreement**

3. Create a password to protect your data on the DT4000. Enter it in the 'Password' field, then re-enter it in the 'Password Confirmation' field, as seen below in **Figure 7.3**. The password you create must meet the following criteria before the initialization process will allow you to continue:

1. Passwords must contain 6 characters or more (up to 16 characters.)
2. Passwords must contain three (3) of the following criteria options:
  - UPPER CASE, lower case, numeric, and/or special characters (!, \$, etc.)

You may also enter a password hint, but it is not a mandatory field. The hint field can be useful in providing a clue as to what the password is, should the password ever be forgotten. (*Note: The hint CANNOT be an exact match to the password.*)



Device Initialization - DT4000

DataTraveler<sup>®</sup> 4000

1 2 3 4

**Password**

\* Password:

\* Password Confirmation:

[Password Rules](#)

Hint:

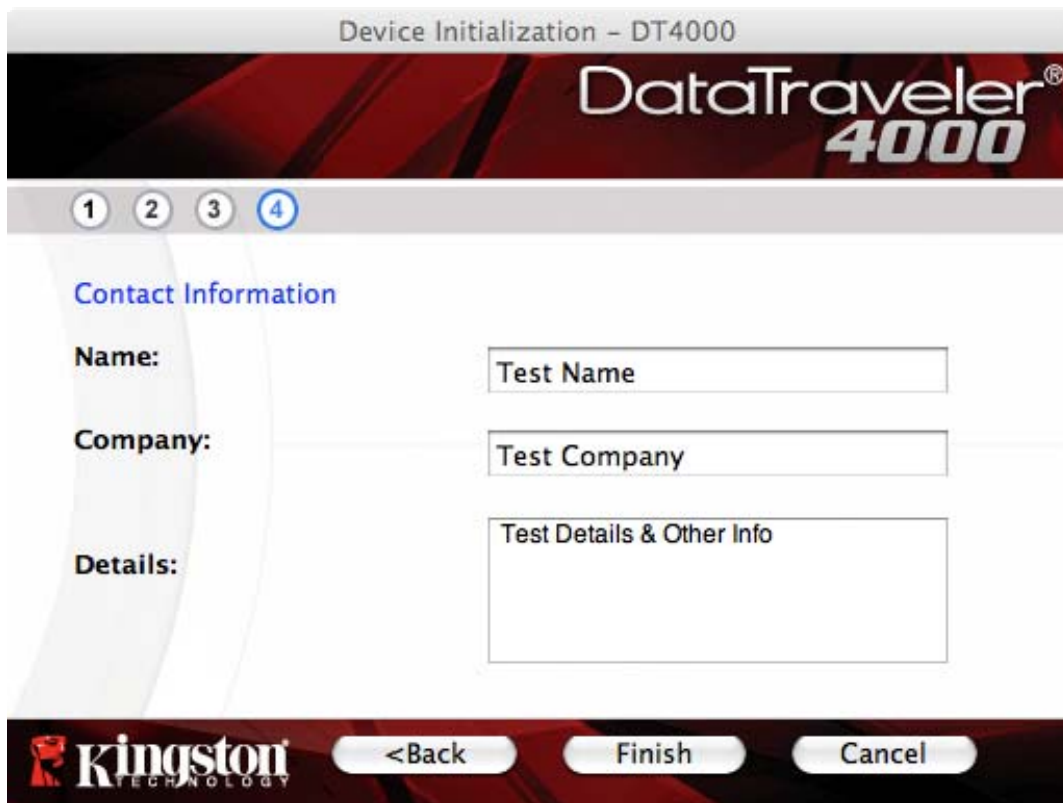
\* Mandatory field

Kingston <Back Next> Cancel

**Figure 7.3 – Password Setup**



4. Enter your contact information into the text boxes provided (see **Figure 7.4**) (Note: The information you enter in these fields may **NOT** contain the password string you created in Step 3. However, these fields are optional and can be left blank, if so desired.)
- The 'Name' field may contain up to 32 characters, but cannot contain the **exact** password.
  - The 'Company' field may contain up to 32 characters, but cannot contain the **exact** password.
  - The 'Details' field may contain up to 156 characters, but cannot contain the **exact** password.



**Figure 7.4 – Contact Information**

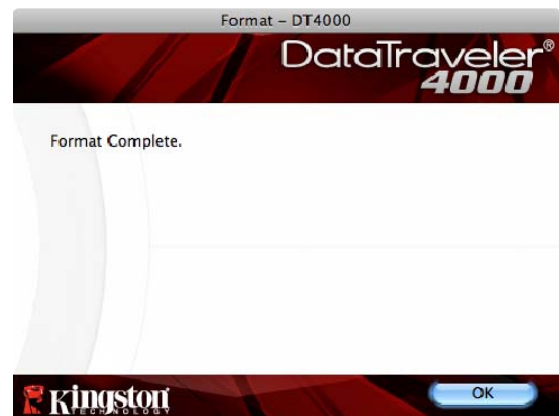
5. Click 'Finish' to complete the device initialization process.

The DT4000 will now format the secure data partition (**Figure 7.5**) and notify you when it is complete (**Figure 7.6**.)

6. Click 'OK' to continue.



**Figure 7.5 – Formatting DT4000**



**Figure 7.6 – Format Complete**

Initialization complete.



## Device Usage (Mac Environment)

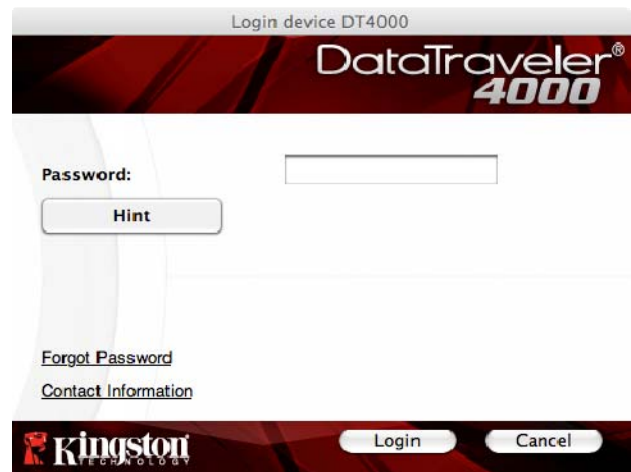
Once the DT4000 has been initialized, you can access the secure data partition and utilize the device options by logging into the device with your password. To do so, follow these steps:

1. Insert the DT4000 into a USB port on your notebook or desktop and enter your password (see **Figure 8.1**.)
2. Once you've typed your password, click the 'Login' button to continue.
  - If the correct password is entered, the DT4000 will unlock and you can begin using the device.
  - If an incorrect password is entered, an error message will appear just below the 'Hint' field, indicating a login failure (see **Figure 8.2**.)

During the login process, if a bad password is entered, you will be given another opportunity to enter the correct password; however, there is a built-in security feature that tracks the number of failed login attempts\*. If this number reaches the pre-configured value of 10 failed attempts, the DT4000 will lock and require a device format of the secure data partition prior to next use.

 **THIS MEANS THAT ALL DATA STORED ON THE DT4000 WILL BE LOST.**

For more details on this feature, see 'Device Lockout' on page 20.



**Figure 8.1 – Login Window**



**Figure 8.2 – Login Failure**

*\*Note: Once you authenticate to the device successfully, the failed login counter will reset.*

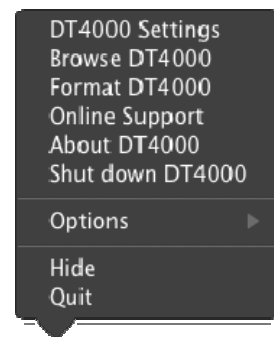
## Device Options (Mac Environment)

While you are logged into the device, there will be a 'DT4000\_Launcher' icon located in the Mac OS X Dock as seen in **Figure 9.1** below:



**Figure 9.1 – DT4000 Icon In Mac OS X Dock**

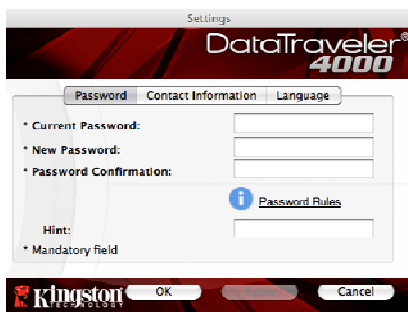
Holding down the 'control' key on your keyboard and clicking once on the 'DT4000\_Launcher' icon will display the menu shown in **Figure 9.2** to the right.



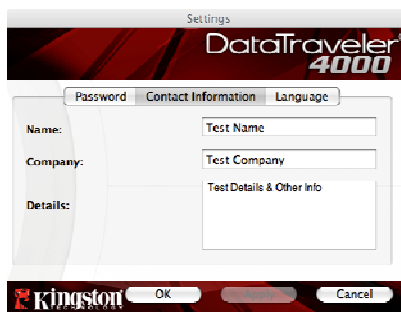
**Figure 9.2  
DT4000 Options**

### DT4000 Settings

- Allows you to change your password and/or hint (**Figure 9.3**)
- Allows you to add/view/change your contact information (**Figure 9.4**)
- Allows you to change your language preference (**Figure 9.5**)



**Figure 9.3  
Change Password**



**Figure 9.4  
Contact Information**



**Figure 9.5  
Select Language**

(Note: For security purposes, your current DT4000 password is required to update and/or modify any of these settings.)

## Browse DT4000

- Allows you to browse the contents of the secure data partition while you are logged in

## Format DT4000

- Allows you to format the secure data partition (Warning: All data will be erased.) (**Figure 9.6**)

## Online Support (Requires Internet access)

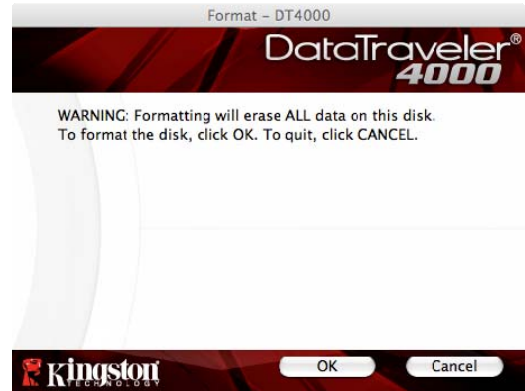
- Opens your Internet browser and navigates to <http://www.kingston.com/support/> where you can access additional support information

## About DT4000

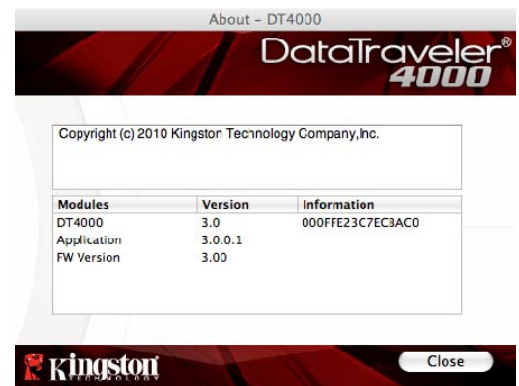
- Provides specific details about the DT4000, including Application and Firmware version information (**Figure 9.7**)

## Shutdown DT4000

- Properly shuts down the DT4000, allowing you to safely remove it from your system



**Figure 9.6 – Format Warning**



**Figure 9.7 – About DT4000**

**-Mac Section Complete-**

## Help and Troubleshooting

### Device Lockout

The DT4000 includes a security feature that prevents unauthorized access to the data partition once a maximum number of **consecutive** failed login attempts (*MaxNoA* for short) has been made; the default “out-of-box” configuration has a pre-configured value of 10 (no. of attempts.)

The ‘lock-out’ counter tracks each failed login and gets reset one of two ways: **1)** A successful login prior to reaching MaxNoA or **2)** reaching MaxNoA and performing a device format.\*

If an incorrect password is entered, an error message will appear just below the ‘*Hint*’ field, indicating a login failure. See **Figure 10.1**.

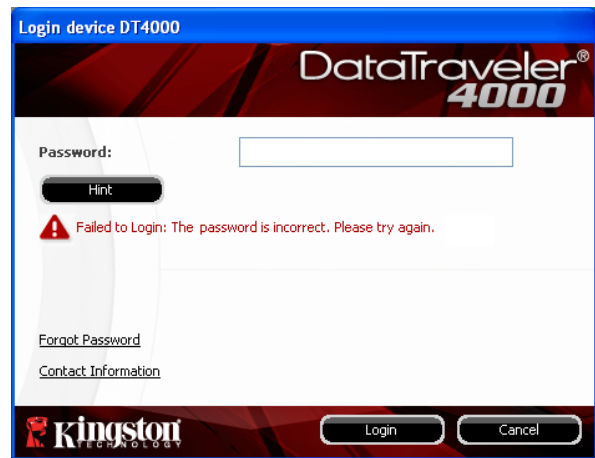
If and when a 7<sup>th</sup> failed attempt is made, you will see an additional error message indicating you have 3 attempts left before reaching MaxNoA (which is set to 10 by default.) See **Figure 10.2**.

After a 10<sup>th</sup> failed login attempt, the DT4000 will permanently block the data partition and require a device format prior to next use. This means that **all data stored on the DT4000 will be lost** and you will need to create a new password.

This security measure limits someone (who does not have your password) from attempting countless login attempts and gaining access to your sensitive data.

If you are the owner of the DT4000 and have forgotten your password, the same security measures will be enforced, including a device format.\*

For more on this feature, see ‘*Forgot Password*’ on page 21.



**Figure 10.1 – Login Failure**



**Figure 10.2 – 7<sup>th</sup> Login Failure**

*\*Note: A device format will erase ALL of the data stored on the DT4000’s secure data partition.*

## Forgot Password

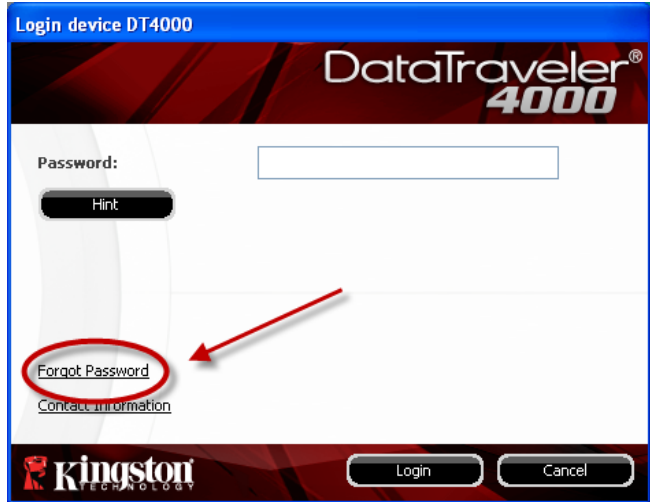
If you forget your password, you can click on the 'Forgot Password' link that appears in the login window when DT4000\_Launcher is executed (see **Figure 10.3**.)

This option will allow you to create a new password, but in order to protect the privacy of your data, the DT4000 will be formatted. This means that all of your data will be erased in the process.\*

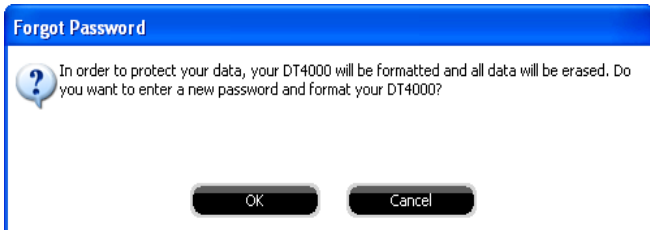
When you do click on 'Forgot Password', a message box (**Figure 10.4**) will appear and ask if you want to enter a new password prior to executing the format. At this point, you can either 1) click 'OK' to confirm or 2) click 'Cancel' to return to the login window.

If you opt to continue, you will be prompted to create a new complex password and a new hint. The hint is not a mandatory field, but it can be useful in providing a clue as to what the password is, should the password ever be forgotten.

(Note: The hint CANNOT be an exact match to the DT4000 password.)



**Figure 10.3 – Forgot Password**



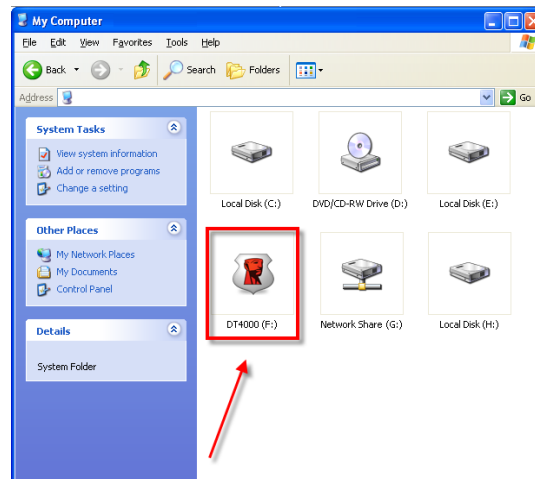
**Figure 10.4 – Prompt Before Format**

\*Note: A device format will erase ALL of the information stored on the DT4000's secure data partition.

## Drive Letter Conflict (Windows Operating Systems)

As mentioned in the 'System Requirements' section of this manual (on page 3), the DT4000 requires two consecutive drive letters AFTER the last physical disk that appears before the 'gap' in drive letter assignments (see **Figure 10.5**.) This does NOT pertain to network shares because they are specific to user-profiles and not the system hardware profile itself, thus appearing available to the OS.

What this means is, Windows may assign the DT4000 a drive letter that's already in use by a network share or Universal Naming Convention (UNC) path, causing a drive letter conflict. If this happens, please consult your administrator or helpdesk department on changing drive letter assignments in Windows Disk Management (administrator privileges required.)



**Figure 10.5 – My Computer**

In this example, the DT4000 uses drive F:, which is the first available drive letter after drive E: (the last physical disk before the drive letter gap.) Because letter G: is a network share and not part of the hardware profile, the DT4000 may attempt to use it as its second drive letter, causing a conflict.

If there are no network shares on your system and the DT4000 still won't load, it is possible that a card reader, removable disk, or other previously-installed device is holding on to a drive-letter assignment and still causing a conflict.

Please note that Drive Letter Management, or DLM, has improved significantly in Windows XP SP3, Vista, and 7, so you may not come across this issue, but if you are unable to resolve the conflict, please contact Kingston's Technical Support Department for further assistance.