

# N6 1.5 U (simple1.5U) Series DVR Quick Start Guide

**Version 4.0**

## Table of Contents

1	Hardware Installation and Connection.....	5
1.1	Check Unpacked DVR.....	5
1.2	About Front Panel and Rear Panel.....	5
1.3	After Remove the Chassis.....	5
1.4	HDD Installation.....	5
1.5	Rack Installation.....	6
1.6	Front Panel.....	6
1.7	Rear Panel.....	8
	1.5U series.....	8
	Simple 1.5 U.....	8
1.8	Connection Sample.....	9
1.9	Alarm Input and Output Connection.....	10
	1.9.1 Alarm Input and Output Details.....	10
	1.9.2 Alarm Input Port.....	11
	1.9.3 Alarm Output Port.....	12
2	Overview of Navigation and Controls.....	13
2.1	Login, Logout & Main Menu.....	13
	2.1.1 Login.....	13
	2.1.2 Main Menu.....	14
	2.1.3 Logout.....	14
	2.1.4 Auto Resume after Power Failure.....	15
2.2	Live Viewing.....	15
2.3	Schedule.....	15
2.4	Manual Record.....	16
2.5	Encode.....	16
	2.5.1 Snapshot.....	17

2.5.2	Image FTP .....	19
2.5.3	Snapshot Disk (For special series only) .....	19
2.6	Search and Playback .....	20
2.7	Network Setup .....	23
2.8	Pan/Tilt/Zoom .....	24
2.8.1	PTZ Setup .....	24
2.8.2	PTZ Operation .....	25
2.8.3	3D Intelligent Positioning Key .....	25
3	Web Client Operation .....	27
3.1	Network Connection .....	27
3.2	Login .....	27
3.3	Main Window .....	27
Appendix Toxic or Hazardous Materials or Elements .....		29

# Welcome

Thank you for purchasing our DVR!

This quick start guide will help you become familiar with our DVR in a very short time.

Here you can find hardware installation, cable connection information and general operations such as system setup, record, search, backup, alarm setup, PTZ operation, also here you can find web operation instruction.

Before installation and operation, please read the following safeguard and warning carefully!

## Important Safeguard and Warning

### 1 . Electrical safety

All installation and operation here should conform to your local electrical safety codes.

We assume no liability or responsibility for all the fires or electrical shock caused by improper handling or installation.

### 2 . Transportation security

Heavy stress, violent vibration or water splash are not allowed during transportation, storage and installation.

### 3 . Installation

Keep upwards. Handle with care.

Do not apply power to the DVR before completing installation.

Do not place objects on the DVR.

### 4 . Qualified engineers needed

All the examination and repair work should be done by the qualified service engineers.

We are not liable for any problems caused by unauthorized modifications or attempted repair.

### 5 . Environment

The DVR should be installed in a cool, dry place away from direct sunlight, inflammable, explosive substances and etc.

### 6. Accessories

Be sure to use all the accessories recommended by manufacturer.

Before installation, please open the package and check all the components are included:

Contact your local retailer ASAP if something is missing in your package.

### 7. Lithium battery

Improper battery use may result in fire, explosion, or personal injury!

When replace the battery, please make sure you are using the same model!

# 1 Hardware Installation and Connection

**Note:** All the installation and operations here should conform to your local electric safety rules.

## 1.1 Check Unpacked DVR

When you receive the DVR from the forwarding agent, please check whether there is any visible damage. The protective materials used for the package of the DVR can protect most accidental clashes during transportation. Then you can open the box to check the accessories.

Please check the items in accordance with the list on the warranty card (Remote control is optional). Finally you can remove the protective film of the DVR.

### **Note**

Remote control is not a standard accessory and it is not included in the accessory bag.

## 1.2 About Front Panel and Rear Panel

For detailed information of the function keys in the front panel and the ports in the rear panel, please refer to the *User's Manual* included in the resource CD.

The model label in the front panel is very important; please check according to your purchase order.

The label in the rear panel is very important too. Usually we need you to represent the serial number when we provide the service after sales.

## 1.3 After Remove the Chassis

Please check the data cable, power cable, COM cable and main board cable connection is secure or not.

## 1.4 HDD Installation

You can refer to the *User's Manual* for recommended HDD brand.

Please follow the instructions below to install hard disk.

1.5U series (simple 1.5 U)

This series DVR has four SATA HDD. Please use HDD of 7200rpm or higher.



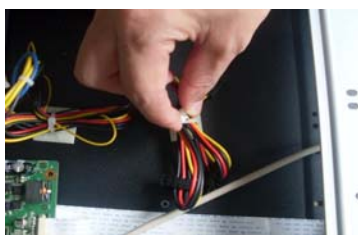
1. Loosen the screws of the upper cover.



2. Line up the HDD to the four holes of the HDD bracket.



3. Use four screws to fix HDD.



4. Unfasten the HDD power cable.



5. Use the special data cable to connect the HDD and the SATA port



6. Insert the HDD power cable. Close the chassis and fix the screws to secure firmly.

### Important

If the HDD amount is less than four, you do not need to install the HDD bracket.

When there is a bracket, please make sure the installation direction of HDDs is the same.

## 1.5 Rack Installation

Please note this installation mode is for 1.5U/2U series product.

Please follow the steps listed below.

- Use twelve screws to fix the unit
- Please make sure the indoor temperature is below 35°C (95°F).
- Please make sure there is 15cm (6 inches) space around the device to guarantee sound ventilation.
- Please install from the bottom to the top.
- If there are more accessories connected in the rack, please take precaution measures in case the rack power is overload.

## 1.6 Front Panel

The front panel is shown as below. See Figure 1-1.

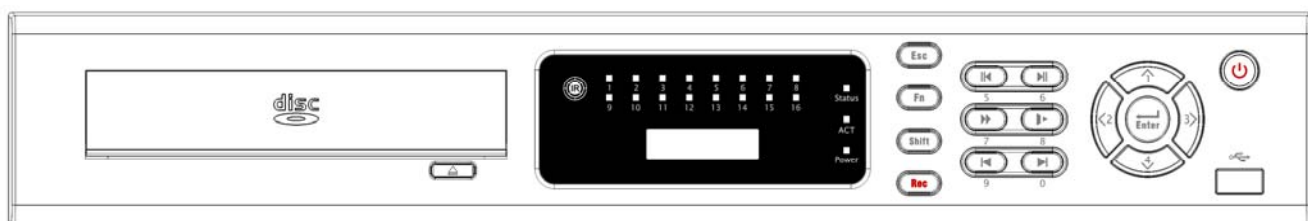



Figure 1-1

Please refer to the following sheet for front panel button information.

Name	Icon	Function
Power button		Power button, press this button for three seconds to boot up or shut down DVR.
USB port		To connect USB storage device, USB mouse.
Up/ Down		Activate current control, modify setup, and then move up and down.
		Increase/decrease numeral.
		Assistant function such as PTZ menu.

		Input number 1/4.
Left/ Right	◀ ▶	Shift current activated control, and then move left and right.
		When playback, click these buttons to control playback bar.
		Input number 2/3.
Enter	ENTER	Confirm current operation
		Go to default button
		Go to menu
Reverse/Pause	⏮	In normal playback or pause mode, click this button to reverse Playback Input number 5.
Play/Pause	▶ ⏮	In normal playback click this button to pause playback In pause mode, click this button to resume playback. Input number 6.
Slow play	⏮▶	Multiple slow play speeds or normal playback. Input number 8.
Fast play	▶▶	Various fast speeds and normal playback. Input number 7.
Play previous	⏮	In playback mode, playback the previous video. Input number 9.
Play Next	▶⏮	In playback mode, playback the next video Input number 0.
ESC	ESC	Go to previous menu, or cancel current operation.
		When playback, click it to restore real-time monitor mode.
Assistant	Fn	One-window monitor mode, click this button to display assistant function: PTZ control and image color.
		Backspace function: in numeral control or text control, press it for 1.5 seconds to delete the previous character before the cursor.
		In motion detection setup, working with Fn and direction keys to realize setup.
		In text mode, click it to switch between numeral, English character(small/capitalized) and etc.
		In HDD management interface, you can click it to switch HDD record information and other information (Menu prompt)
		Realize other special functions.
Shift	↑	In textbox, click this button to switch between numeral, English(Small/Capitalized),donation and etc.
Record	REC	Manually stop/start recording, working with direction keys or numeral keys to select the recording channel.
Remote control indication light	ACT	Remote control indication light
Status indication light	Status	If there is Fn indication light, current status indication light is null.

Power indication light	Power	Power indication light
Record light	1-16	System is recording or not. It becomes on when system is recording.
IR Receiver	IR	It is to receive the signal from the remote control.
CD-ROM button		Pop-up or insert the CD.

Note: the panel of simple 1.5 U also adopts the above panel model.

## 1.7 Rear Panel

### 1.5U series

The rear panel is shown as in Figure 1-2.

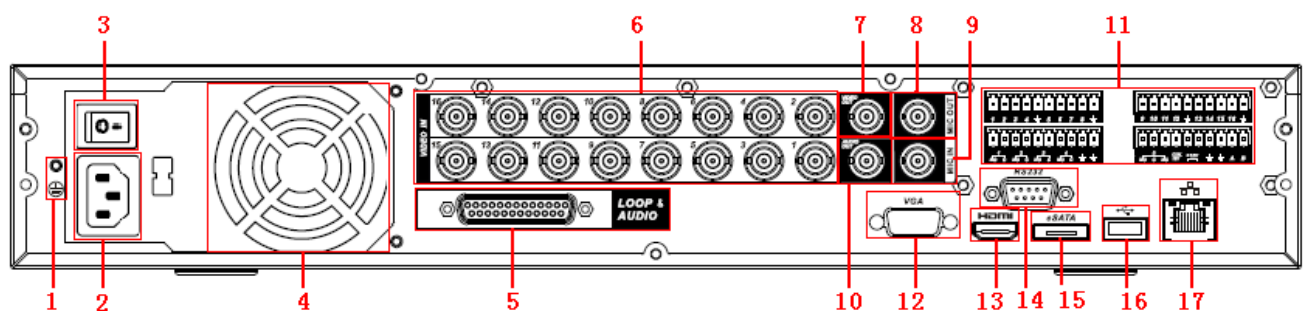


Figure 1-2

Please refer to the following sheet for detailed information.

1	GND port
2	Power input port
3	Power button
4	Fan
5	Audio input /Matrix video output/Loop video output
6	Video input
7	Video CVBS output
8	Bidirectional talk input port
9	Bidirectional talk output port
10	Audio output
11	Alarm input/Alarm output/RS485 port
12	Video VGA output
13	HDMI port
14	RS232 port
15	eSATA port
16	USB port
17	Network port

### Simple 1.5 U

This series DVR rear panel is shown as below. See Figure 1-3

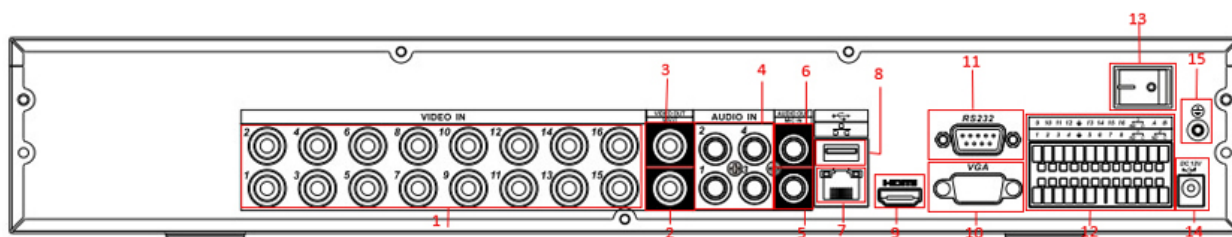


Figure 1-7

1	Video input
2	Video spot output
3	Video CVBS output
4	Audio input
5	Bidirectional talk input
6	Audio output
7	Network port
8	USB port
9	HDMI port
10	Video VGA output
11	RS232 port
12	Alarm input/alarm output/RS485 port
13	On/off button
14	Power socket
15	GND port

## 1.8 Connection Sample

Please refer to Figure 1-4 for connection sample.

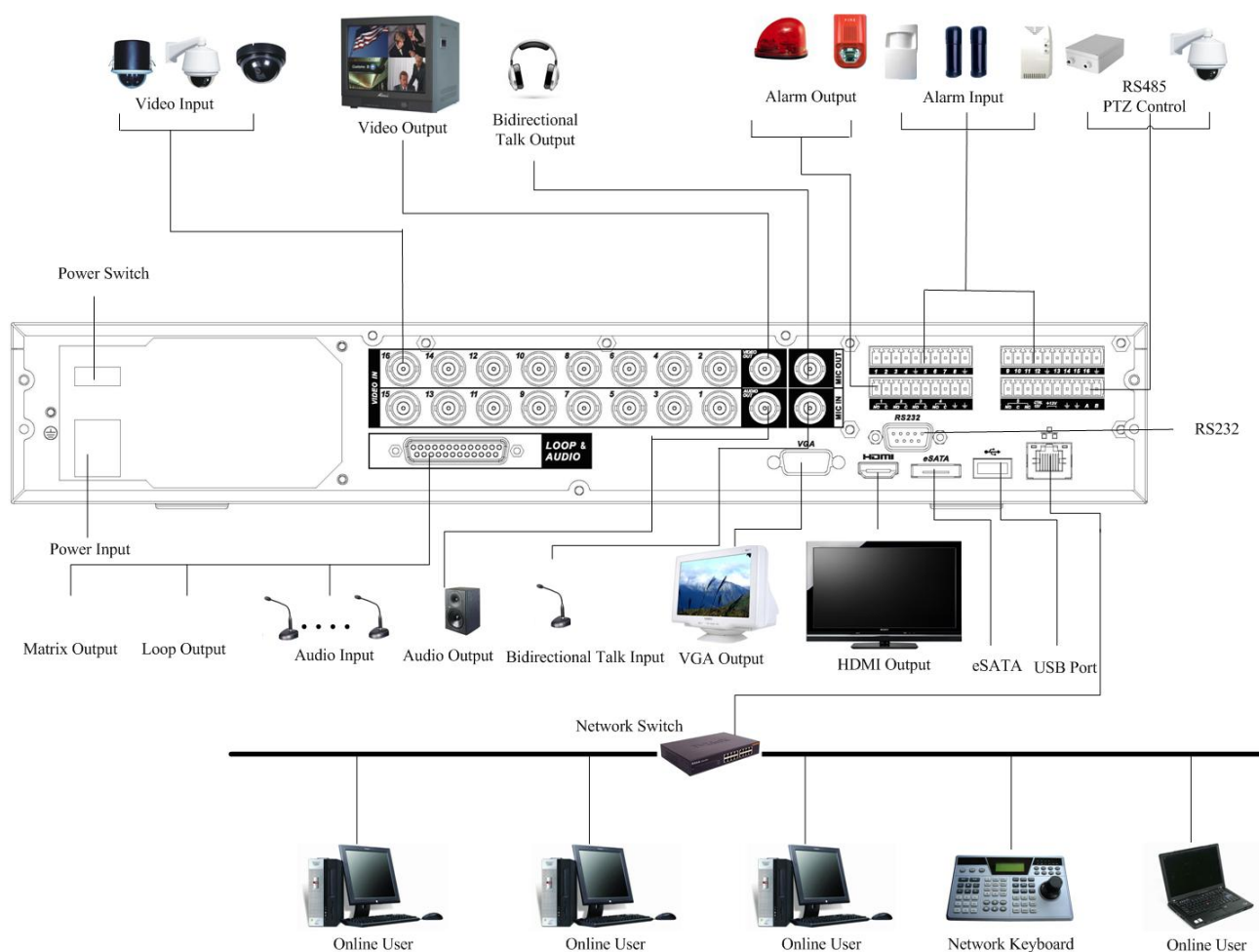


Figure 1-4

## 1.9 Alarm Input and Output Connection

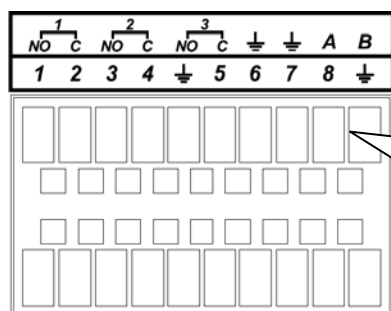
### Important

Please refer to the specifications for the alarm input and output channel amount. Do not merely count the alarm input and out channel amount according to the ports on the rear panel.

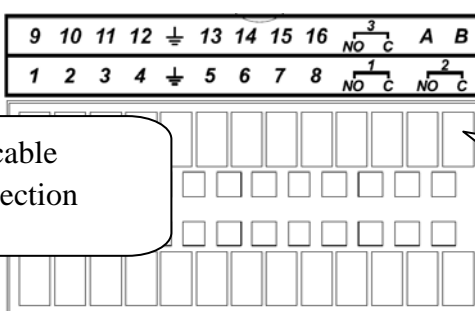
There are two alarm input types for you to select: normal open (NO) and normal close (NC).

### 1.9.1 Alarm Input and Output Details

Port 1:



Port 2:



AB cable connection

AB cable connection

Port 3:



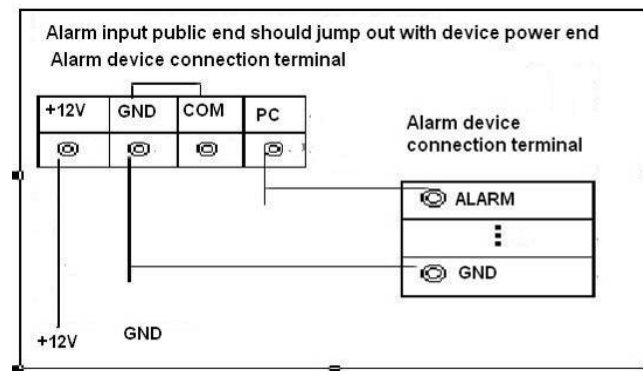


Figure 1-5

### 1.9.3 Alarm Output Port

- Provide external power to external alarm device.
- For controllable +12V, it can be used to provide power to devices such as reset smoke sensor.
- To avoid overloading, please read relay parameters sheet in the *User's Manual* carefully.
- RS485 A/B cable is for the A/B cable of the PTZ decoder.

## 2 Overview of Navigation and Controls

Before operation, please make sure:

- You have properly installed HDD and all the cable connections.
- The provided input power and the device power are matched.
- The external power shall be DC 12 V.
- Always use the stable current, if necessary UPS is a best alternative measure.

### 2.1 Login, Logout & Main Menu

#### 2.1.1 Login

After system booted up, system pops up the startup wizard.

Click the Cancel button; you can go to the system login interface.

Click the Next Step button; you can go to the startup wizard interface. Here you can set the system basic information. See Figure 2-1.




Figure 2-1

The system login interface is shown as in Figure 2-2.

System consists of four accounts:

- **Username:** admin. **Password:** admin. (administrator, local and network)
- **Username:** 888888. **Password:** 888888. (administrator, local only)
- **Username:** 666666. **Passwords:** 666666 (Lower authority user who can only monitor, playback, backup and etc.)
- **Username:** default. **Password:** default (hidden user)

You can use USB mouse, front panel, remote control (not included in the accessory bag) or

keyboard to input. About input method: Click  to switch between numeral, English character (small/capitalized) and denotation.

**Note:**

**For security reason, please modify password after you first login.**

Within 30 minutes, three times login failure will result in system alarm and five times login failure will result in account lock!



Figure 2-2

### 2.1.2 Main Menu

After you logged in, the system main menu is shown as below. See Figure 2-3.

There are total six icons: search, information, setting, backup, advanced and shutdown.

You can move the cursor to highlight the icon, and then double click mouse to enter the sub-menu.

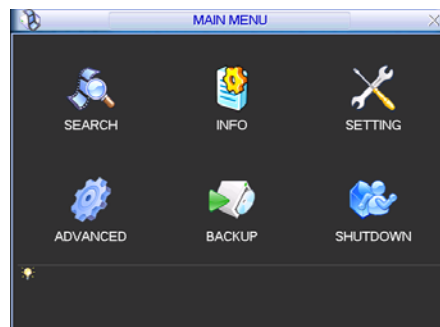


Figure 2-3

### 2.1.3 Logout

There are two ways for you to log out.

The first one is from menu option:

In the main menu, click shutdown button, you can see an interface is shown as below. See Figure 2-4.

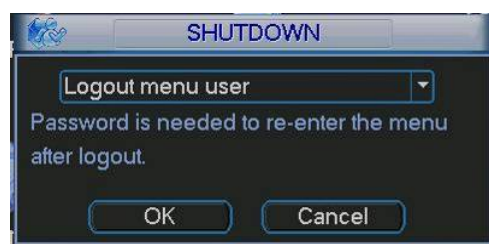


Figure 2-4

There are several options for you. See Figure 2-5.

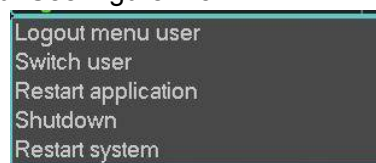


Figure 2-5

The other ways is to press power button on the front panel for at least 3 seconds, system will stop all operations. Then you can click the power button in the front panel to turn off the DVR.





Please note, before you replace the HDD, do remember shutting down the device and unplug the power cable.

### 2.1.4 Auto Resume after Power Failure

The system can automatically backup video and resume previous working status after power failure.

## 2.2 Live Viewing

After you logged in, the system is in live viewing mode by default. You can see system date, time and channel name. If you want to change system date and time, you can refer to general settings (Main Menu->Setting->General). If you want to modify the channel name, please refer to the display settings (Main Menu->Setting->Display)

1		Recording status	3		Video loss
2		Motion detection	4		Camera lock

## 2.3 Schedule


### Note:

You need to have proper rights to implement the following operations. Please make sure the HDDs have been properly installed.

After the system booted up, it is in default 24-hour regular mode. You can set record type and time in schedule interface.

In the main menu, from Setting to Schedule, you can go to schedule menu. See Figure 2-6. There are total six periods.

- Channel: Please select the channel number first. You can select “all” if you want to set for the whole channels.
- Week day: There are eight options: ranges from Saturday to Sunday and all.
- Pre-record: System can pre-record the video before the event occurs into the file. The value ranges from 1 to 30 seconds depending on the bit stream.
- Redundancy: System supports redundancy backup function. You can highlight Redundancy button to activate this function. Please note, before enable this function, please set at least one HDD as redundant. (Main menu->Advanced->HDD Management).
- Snapshot: You can enable this function to snapshot image when alarm occurs.
- Record types: There are four types: regular, motion detection (MD), Alarm, MD & alarm.

Please highlight icon  to select the corresponding function. After completing all the setups please click save button, system goes back to the previous menu.

At the bottom of the menu, there are color bars for your reference. Green color stands for regular recording, yellow color stands for motion detection and red color stands for alarm recording. The white means the MD and alarm record is valid. Once you have set to record when the MD and alarm occurs, system will not record neither motion detect occurs nor the alarm occurs.



Figure 2-6

## 2.4 Manual Record

### Note:

Please make sure you have the record operation right and you have properly installed the formatted HDD.

You can right click mouse or in the main menu, from Advanced->Manual Record to go to record interface.

There are three statuses: schedule/manual/stop. Highlight icon “○” to select corresponding channel. See Figure 2-7.

- Manual: The highest priority. After manual setup, all selected channels will begin ordinary recording.
- Schedule: Channel records as you have set in recording setup (Main Menu->Setting->Schedule)
- Stop: All channels stop recording.



Figure 2-7

## 2.5 Encode

Encode interface is shown as in Figure 2-8.

- Channel: Select the channel you want.
- Type: Please select from the dropdown list. There are three options: regular/motion detect/alarm. You can set the various encode parameters for different record types.
- Compression: System supports H.264.
- Resolution: System supports various resolutions, you can select from the dropdown list. The main stream supports D1/HD1/2CIF/CIF/QCIF. The extra stream supports CIF/QCIF. Please note the frame rate may vary due to different channels.

- Frame rate: It ranges from 1f/s to 25f/s in NTSC mode and 1f/s to 30f/s in PAL mode.
- Bit rate type: system supports two types: CBR and VBR. In VBR mode, you can set video quality.
- Quality: There are six levels ranging from 1 to 6. The sixth level has the highest image quality.
- Video/audio: you can enable or disable the video/audio. Please note the video is enabled for main stream by default. For extra stream, please enable video first and then enable audio.
- Snapshot: Click snapshot button, you can see it contains the four items: mode/image size/image quality/snapshot frequency. Please refer to chapter 2.3.3 for detail information.

Please highlight icon  to select the corresponding function.

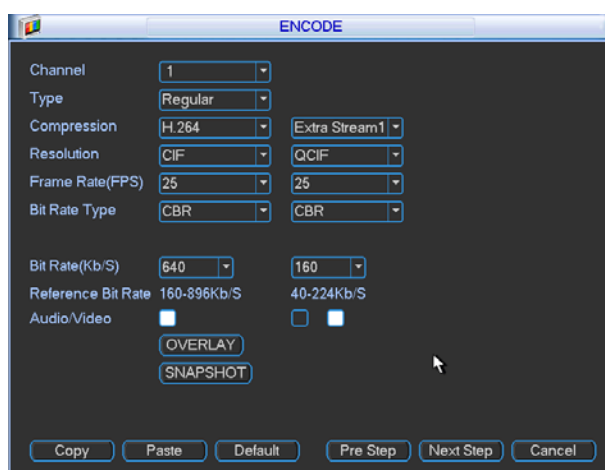


Figure 2-8

## 2.5.1 Snapshot

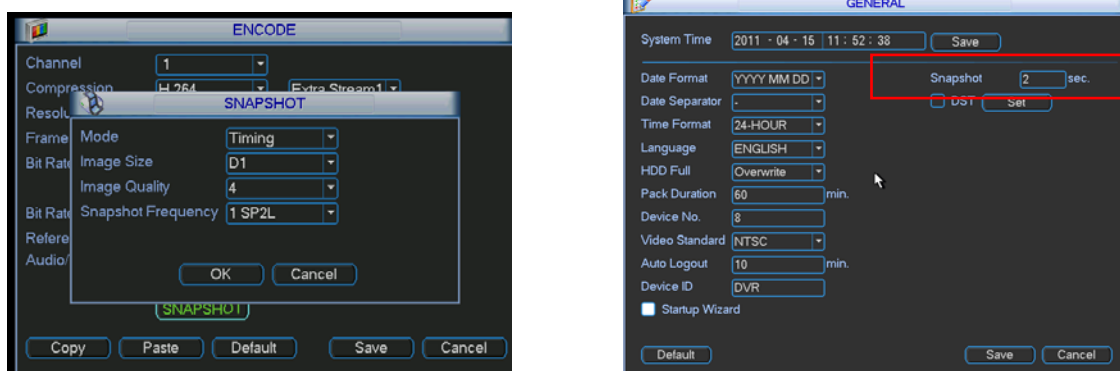
### 2.5.1.1 Schedule Snapshot

In Encode interface, click snapshot button to input snapshot mode, size, quality and frequency.

In General interface please input upload interval.

In Schedule interface, please enable snapshot function.

Please refer to the following figure for detail information. See Figure 2-9.



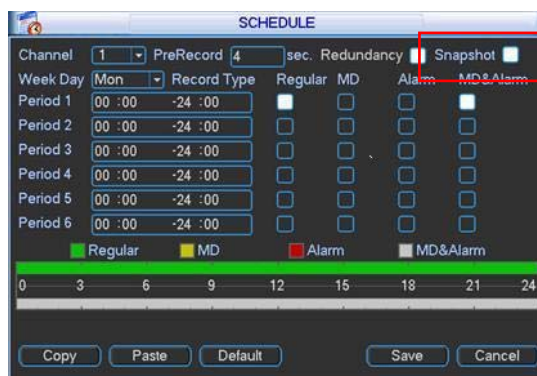


Figure 2-9

### 2.5.1.2 Activation Snapshot

Please follow the steps listed below to enable the activation snapshot function. After you enabled this function, system can snapshot when the corresponding alarm occurred.

- In Encode interface, click snapshot button to input snapshot mode, size, quality and frequency.
- In General interface please input upload interval.
- In Detect interface please enable snapshot function for specified channels. Or in Alarm interface please enable snapshot function for specified channels.

Please refer to the following figure for detailed information. See Figure 2-10.

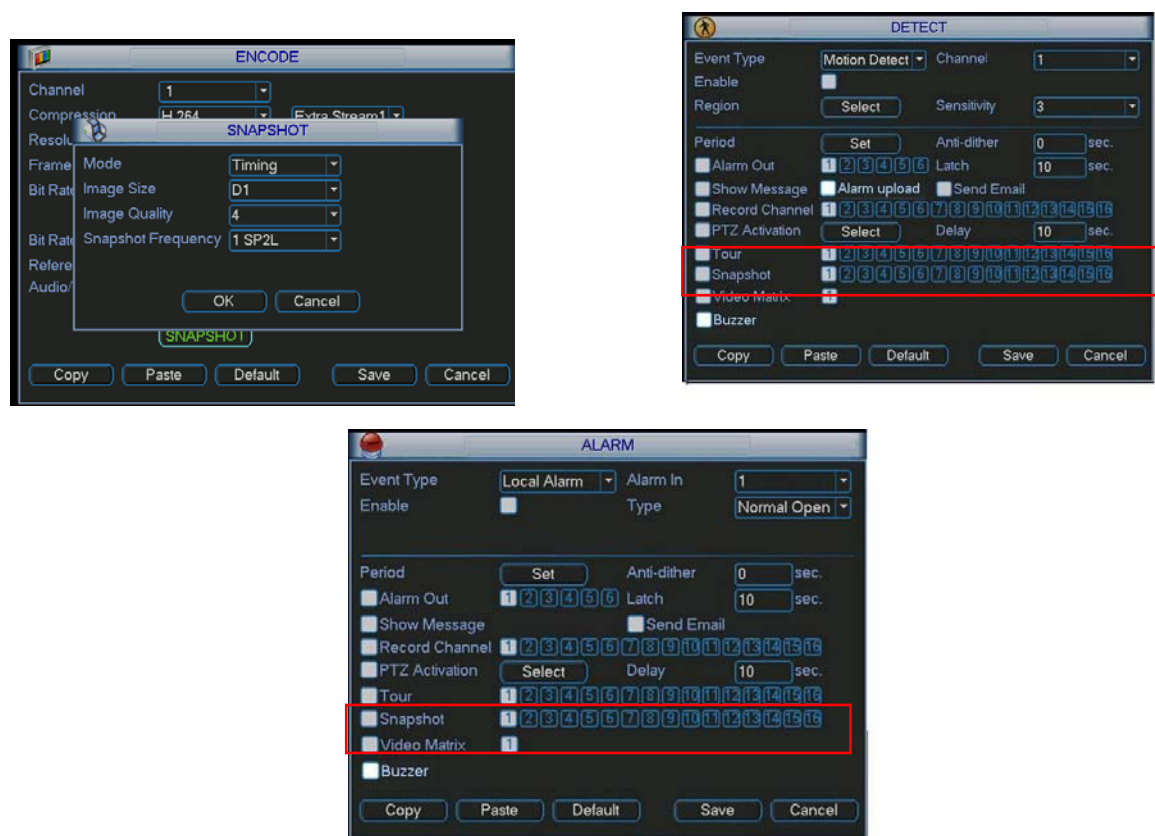


Figure 2-10

### 2.5.1.3 Priority

Please note the activation snapshot has the higher priority than schedule snapshot. If you have enabled these two types at the same time, system can activate the activation snapshot when alarm occurs, and otherwise system just operates the schedule snapshot.

## 2.5.2 Image FTP

In Network interface, you can set FTP server information. Please enable FTP function and then click save button. See Figure 2-11. Please refer to the *User's Manual* included in the resource CD for detailed information.

Please boot up corresponding FTP server.

Please enable schedule snapshot or activation snapshot (Chapter 2.3.3) and then system can upload the image file to the FTP server.

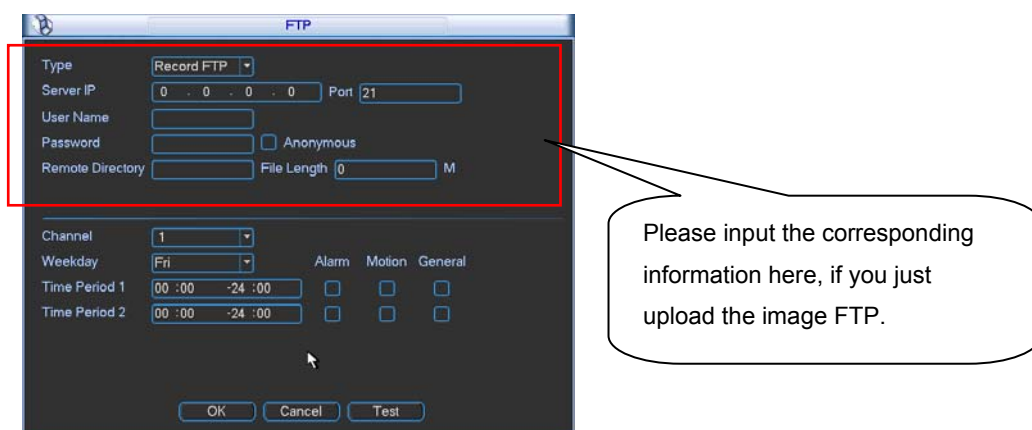


Figure 2-11

## 2.5.3 Snapshot Disk (For special series only)

Set one disk as snapshot (Main menu->Advanced->HDD management) and then click execute button. See Figure 2-12. System needs to reboot to get current setup activated.

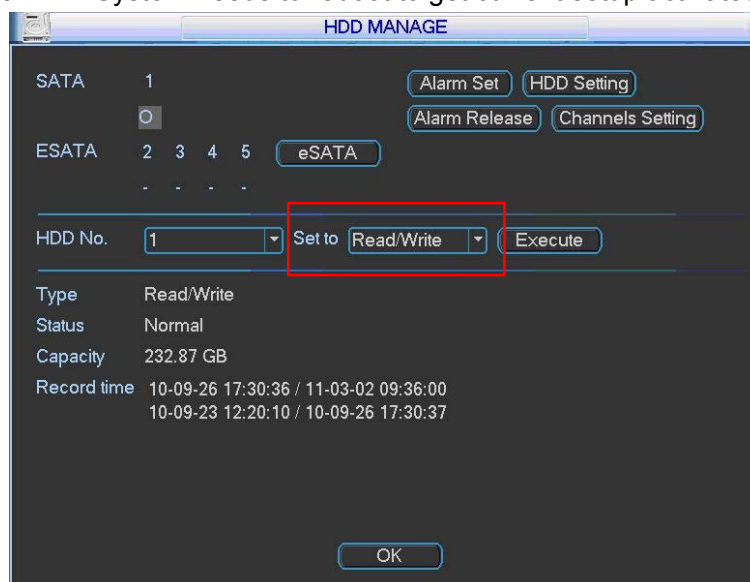


Figure 2-12

All scheduled snapshot files or activated snapshot files will be memorized in the snapshot disk.

You can search the corresponding images via Web. See Figure 2-13.

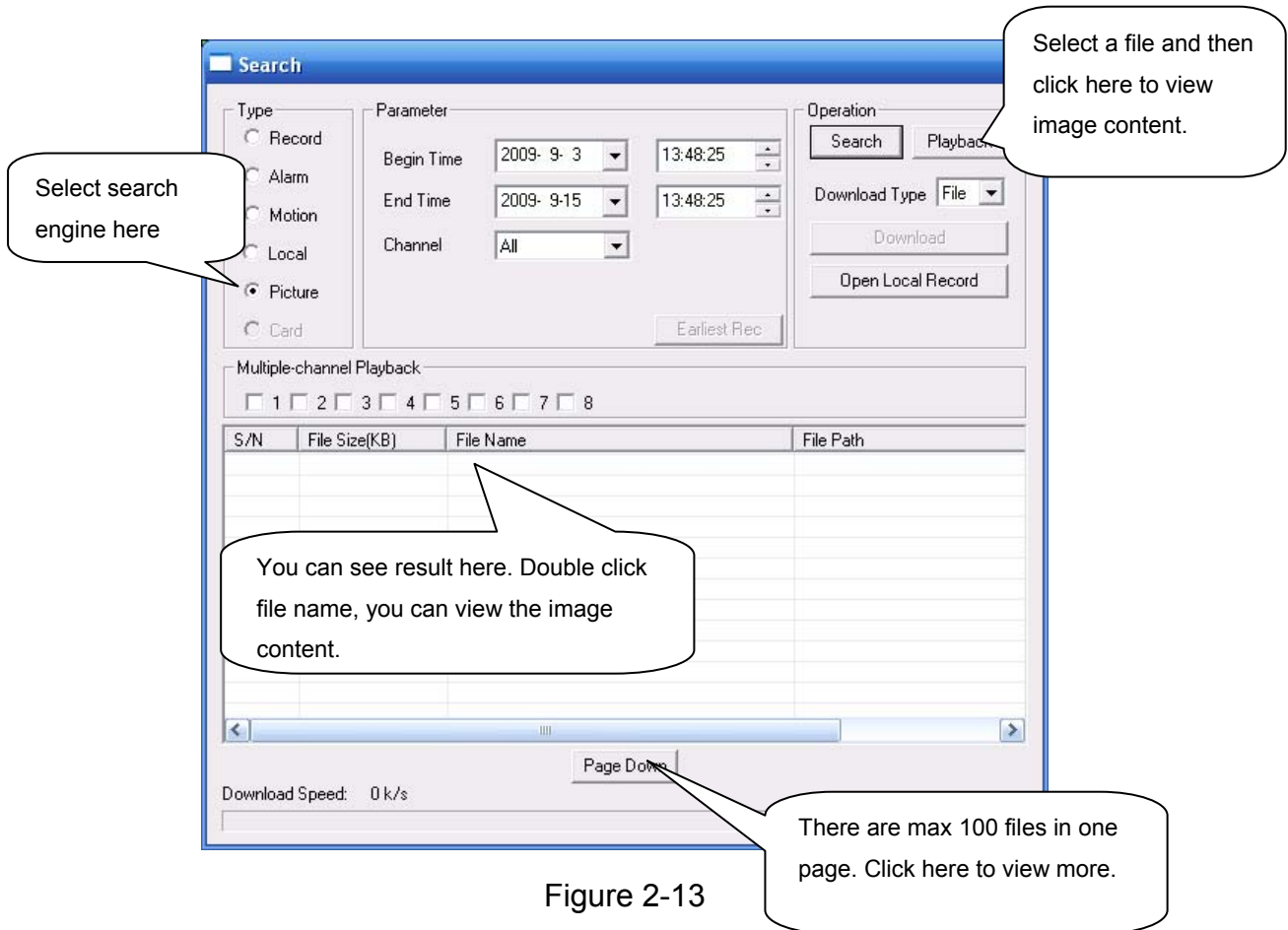


Figure 2-13

## 2.6 Search and Playback

Click search button in the main menu, search interface is shown as below. See Figure 2-14.

Usually there are three file types:

- R: Regular recording file.
- A: External alarm recording file.
- M: Motion detection recording file.

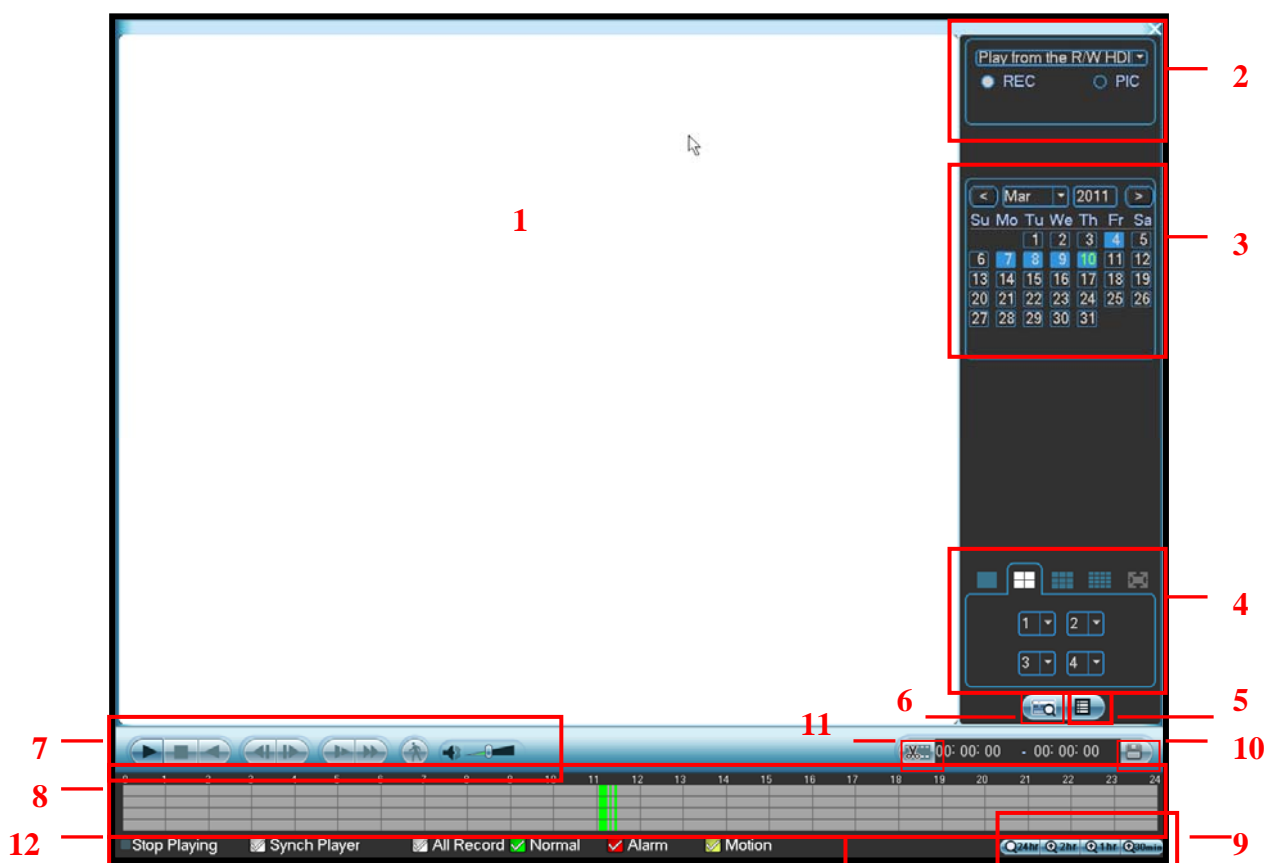
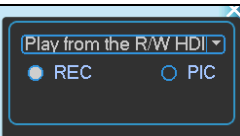

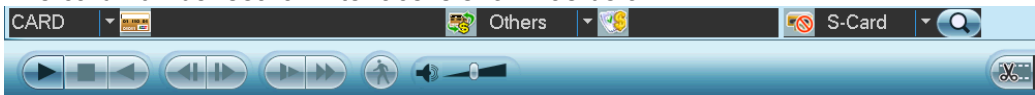











Figure 2-14

Please refer to the following sheet for more information.

SN	Name	Function
1	Display window	<ul style="list-style-type: none"> <li>●Here is to display the searched picture or file.</li> <li>●Support 1/4/9/16-window playback.</li> </ul>
2	Search type	<ul style="list-style-type: none"> <li>●Here you can select to search the picture or the recorded file.</li> <li>●When there is displayed picture on the left pane, you can set the corresponding setup</li> </ul> 
3	Calendar	<ul style="list-style-type: none"> <li>●The blue highlighted date means there is picture or file. Otherwise, there is no picture or file.</li> <li>●In any play mode, click the date you want to see, you can see the corresponding record file trace in the time bar.</li> </ul>
4	Playback mode and channel selection pane.	<ul style="list-style-type: none"> <li>●Playback mode: 1/4/9/16. (It may vary due to different series.) <ul style="list-style-type: none"> <li>✧ In 1-window playback mode: you can select 1-16 channels.</li> <li>✧ In 4-window playback mode: you can select 4 channels according to your requirement.</li> <li>✧ In 9-window playback mode, you can switch between 1-9 and 10-16 channels.</li> <li>✧ In 16-window playback mode, you can switch between 1-16 and 17-32 channels.</li> </ul> </li> <li>●The time bar will change once you modify the playback mode or the channel option.</li> </ul>

5	File list switch button	<ul style="list-style-type: none"> <li>●Double click it, you can view the picture/record file list of current day.</li> <li>●The file list is to display the first channel of the record file.</li> <li>●The system can display max 128 files in one time. Use the ▲/▼ or the mouse to view the file. Select one item, and then double click the mouse or click the ENTER button to playback.</li> <li>●You can input the period in the following interface to begin accurate search.</li> <li>●File type: R—regular record; A—external alarm record; M—Motion detect record.</li> </ul> 	
6	Card number search	<p>The card number search interface is shown as below.</p> 	
7	Playback control pane.		<p>Play/Pause</p> <p>There are three ways for you to begin playback.</p> <ul style="list-style-type: none"> <li>● The play button</li> <li>● Double click the valid period of the time bar.</li> <li>● Double click the item in the file list.</li> </ul> <p>In slow play mode, click it to switch between play/pause.</p>
			<p>Stop</p>
			<p>Backward play</p> <p>In normal play mode, left click the button, the file begins backward play. Click it again to pause current play.</p> <p>In backward play mode, click ► /    to restore normal play.</p>
			<p>In playback mode, click it to play the next or the previous section. You can click continuously when you are watching the files from the same channel.</p> <p>In normal play mode, when you pause current play, you can click ◀  and  ▶ to begin frame by frame playback.</p> <p>In frame by frame playback mode, click ► /    to restore normal playback.</p>
			<p>Slow play</p> <p>In playback mode, click it to realize various slow play modes such as slow play 1, slow play 2, and etc.</p>
			<p>Fast forward</p> <p>In playback mode, click to realize various fast play modes such as fast play 1, fast play 2 and etc.</p>
		<p>Note: The actual play speed has relationship with the software version.</p>	
			<p>Smart search</p>
			<p>The volume of the playback</p>
			<p>Click the snapshot button in the full-screen mode, the system can snapshot 1 picture per second.</p>
8	Time bar	<ul style="list-style-type: none"> <li>●It is to display the record type and its period in current search criteria.</li> <li>●In 4-window playback mode, there are corresponding four time bars. In other playback mode, there is only one time bar.</li> <li>●Use the mouse to click one point of the color zone in the time bar, system begins playback.</li> <li>●The time bar is beginning with 0 o'clock when you are setting the configuration. The time bar zooms in the period of the current playback time when you are playing the file.</li> <li>●The green color stands for the regular record file. The red color stands for the external alarm record file. The yellow stands for the motion detect record file.</li> </ul>	
9	Time bar unit	<ul style="list-style-type: none"> <li>●The option includes: 24H, 12H, 1H and 30M. The smaller the unit, the larger the zoom rate. You can accurately set the time in the time bar to playback the record.</li> </ul>	

		<ul style="list-style-type: none"> <li>● The time bar is beginning with 0 o'clock when you are setting the configuration. The time bar zooms in the period of the current playback time when you are playing the file.</li> </ul>
10	Backup	Select the file(s) you want to backup from the file list. System max supports files from four channels. Then click the backup button, now you can see the backup menu. Click the start button to begin the backup operation. Check the file again you can cancel current selection. System max supports to display 32 files from one channel.
11	Clip	<ul style="list-style-type: none"> <li>● It is to edit the file.</li> <li>● Please play the file you want to edit and then click this button when you want to edit. You can see the corresponding slide bar in the time bar of the corresponding channel. You can adjust the slide bar or input the accurate time to set the file end time. Click this button again and then save current contents in a new file. .</li> </ul>
12	Record type	In any play mode, the time bar will change once you modify the search type.
13	Smart search	<ul style="list-style-type: none"> <li>● When system is playing, you can select a zone in the window to begin motion detect. Click the motion detect button to begin play.</li> <li>● Current button is null once the motion detect play has begun.</li> <li>● The system will take the whole play zone as the motion detect region by default.</li> <li>● The motion detect play stopped once you switch the play file.</li> <li>● Operations such as set time bar, click the play button, or any file list operation will stop current motion detect play.</li> </ul>
<b>Other Functions</b>		
14	Other channel synchronization switch to play when playback	When playing the file, click the number button, system can switch to the same period of the corresponding channel to play.
15	Digital zoom	When the system is in full-screen playback mode, left click the mouse in the screen. Drag your mouse in the screen to select a section and then left click mouse to realize digital zoom. You can right click mouse to exit.

**Note:**

All the operations here (such as playback speed, channel, time and progress) have relationship with hardware version. Some series DVRs do not support some functions or playback speeds.

## 2.7 Network Setup

Here is for you to input network information. See Figure 2-15.

- IP address: Here you can input IP address.
- DHCP: It is auto search IP function. When enable DHCP function, you can not modify IP/Subnet mask /Gateway. These values are from DHCP function. If you have not enabled DHCP function, IP/Subnet mask/Gateway display as 0. You need to disable DHCP function to view current IP information. Besides, when PPPoE is operating, you can not modify IP/Subnet mask /Gateway.
- TCP port: Default value is 37777.
- UDP port: Default value is 37778.
- HTTP port: Default value is 80.
- Max connection: system support maximal 10 users. 0 means there is no connection limit.
- Preferred DNS server: DNS server IP address.
- Alternate DNS server: DNS server alternate address.
- Transfer mode: Here you can select the priority between fluency/video qualities.

- Network download: System can process the downloaded data first if you enable this function.
- Advanced setting: Please refer to the *user's manual* included in the resource CD for detailed information.

After completing all the setups please click save button, system goes back to the previous menu.

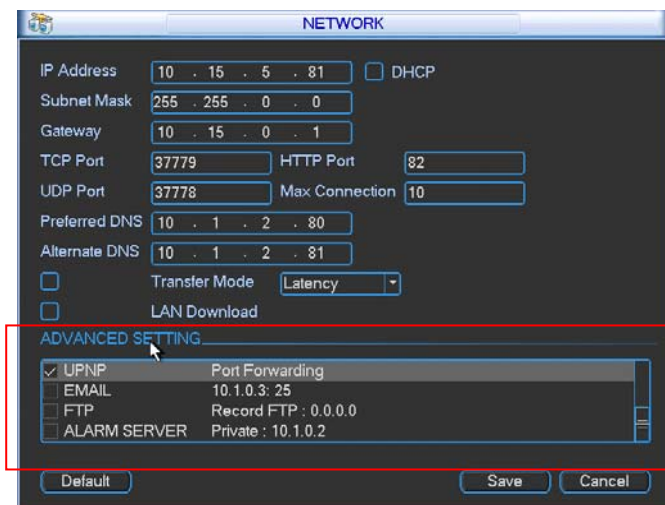


Figure 2-15

## 2.8 Pan/Tilt/Zoom

Please note:

- Slight difference may be found in the user's interface, due to various protocols.
- Please make sure the speed domes A/B cables are properly connected to the A/B ports of DVR.
- You have properly set PTZ information.
- Please switch camera monitor channel to current window.

### 2.8.1 PTZ Setup

The pan/tilt/zoom setup includes the following items. Please select channel first. See Figure 2-16.

- Protocol: Select corresponding PTZ protocol such as PELCOD.
- Address: Input corresponding PTZ address.
- Baud rate: Select baud rate.
- Data bit: Select data bit. Default value is 8.
- Stop bit: Select stop bit. Default value is 1.
- Parity: There are three choices: none/odd/even. Default value is none.



Figure 2-16

After completing all the setups please click save button, system goes back to the previous menu.

## 2.8.2 PTZ Operation

In one window display mode, right click mouse (click “Fn” Button in the front panel or click “Fn” key in the remote control). The interface is shown as in Figure 2-17.

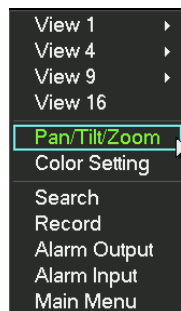


Figure 2-17

Click Pan/Tilt/Zoom, the interface is shown as below. See Figure 2-18.

Here you can set the following items:

- Step: value ranges from 1 to 8.
- Zoom
- Focus
- Iris



Click icon  and  to adjust zoom, focus and iris.



Figure 2-18

In Figure 2-18, please click direction arrows (See Figure 2-19) to adjust PTZ position. There are total 8 direction arrows. Please note if you use remote control, you can use just four directions (Up/down/left/right).

The speed value ranges from 1 to 8.



Figure 2-19

## 2.8.3 3D Intelligent Positioning Key

In the middle of the eight direction arrows, there is a 3D intelligent positioning key. See Figure 2-20. Please note, this function needs protocol supported and can only be operated by mouse.

Click this key, system goes back to the single screen mode. Drag the mouse in the screen to adjust section size. It can realize PTZ automatically.



Figure 2-20

Here is a sheet for you reference.

Name	Function key	function	Shortcut key	Function key	function	Shortcut Key
Zoom		Near	►		Far	►►
Focus		Near	◀		Far	►
Iris		close	◀		Open	►

You can click set button in Figure 2-18 (or click REC button in the front panel) to set preset, tour, and pattern.

You can click page switch button in Figure 2-18 (or click Fn button in the front panel) to call main function.

## 3 Web Client Operation

Slightly difference may be found in the interface due to different series.

### 3.1 Network Connection

Before web client operation, please check the following items:

- Network connection is right
- DVR and PC network setup is right. Please refer to network setup(main menu->setting->network)
- Use order ping `***.***.***.***(* DVR IP address)` to check connection is OK or not. Usually the return TTL value should be less than 255.
- System can automatically download latest web control and the new version can overwrite the previous one.
- If you want to un-install the web controls, please run `uninstall webrec2.0.bat` to auto delete the control or you can go to `C:\Program Files\webrec` to delete Single folder.

### 3.2 Login

Open IE and input DVR address in the address column. For example, if your DVR IP is 10.10.3.16, then please input `http:// 10.10.3.16` in IE address column.

System pops up warning information to ask you whether install webrec.cab control or not. Please click yes button.

If you can't download the ActiveX file, please modify your IE security setup.

After installation, the interface is shown as below. See Figure 3-1.

Please input your user name and password.

Default factory name is admin and password is admin.

**Note: For security reasons, please modify your password after you first login.**

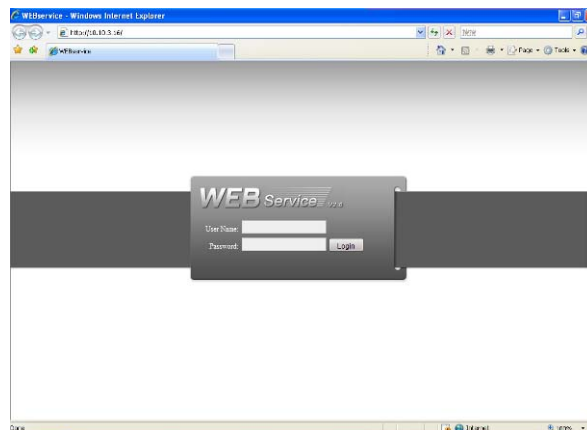


Figure 3-1

### 3.3 Main Window

After you logged in, you can see the main window. See Figure 3-2.

Click the channel name on the left side; you can view the real-time video.

For detailed operation information, please refer to the *User's Manual* included in the resources CD.



Figure 3-2

## Appendix Toxic or Hazardous Materials or Elements

Component Name	Toxic or Hazardous Materials or Elements					
	Pb	Hg	Cd	Cr VI	PBB	PBDE
Sheet Metal(Case)	○	○	○	○	○	○
Plastic Parts (Panel)	○	○	○	○	○	○
Circuit Board	○	○	○	○	○	○
Fastener	○	○	○	○	○	○
Wire and Cable/AC Adapter	○	○	○	○	○	○
Packing Material	○	○	○	○	○	○
Accessories	○	○	○	○	○	○

### Note

O: Indicates that the concentration of the hazardous substance in all homogeneous materials in the parts is below the relevant threshold of the SJ/T11363-2006 standard.

X: Indicates that the concentration of the hazardous substance of at least one of all homogeneous materials in the parts is above the relevant threshold of the SJ/T11363-2006 standard. During the environmental-friendly use period (EFUP) period, the toxic or hazardous substance or elements contained in products will not leak or mutate so that the use of these (substances or elements) will not result in any severe environmental pollution, any bodily injury or damage to any assets. The consumer is not authorized to process such kind of substances or elements, please return to the corresponding local authorities to process according to your local government statutes

### Note

- For detailed operation introduction, please refer to our resource CD included in your package for electronic version of the *User's Manual*.
- Slight difference may be found in user interface.
- All the designs and software here are subject to change without prior written notice.
- If there is any uncertainty or controversy, please refer to the final explanation of us.
- Please visit our website for more information.