

HD Cube Network Camera User's Manual

Version 1.0.1

Welcome

Thank you for purchasing our network camera!

This user's manual is designed to be a reference tool for your system.

Please read the following safeguard and warnings carefully before you use this series product!

Please keep this user's manual well for future reference!

Important Safeguards and Warnings

1 . Electrical safety

All installation and operation here should conform to your local electrical safety codes.

The power shall conform to the requirement in the SELV (Safety Extra Low Voltage) and the Limited power source is rated 12V DC in the . **Please note: Do not connect these two power supplying sources to the device at the same time; it may result in device damage!**

We assume no liability or responsibility for all the fires or electrical shock caused by improper handling or installation.

We are not liable for any problems caused by unauthorized modification or attempted repair.

2 . Transportation security

Heavy stress, violent vibration or water splash are not allowed during transportation, storage and installation.

3 . Installation

Do not apply power to the camera before completing installation.

Please install the proper power cut-off device during the installation connection.

Always follow the instruction guide the manufacturer recommended.

4 . Qualified engineers needed

All the examination and repair work should be done by the qualified service engineers.

We are not liable for any problems caused by unauthorized modifications or attempted repair.

5 . Environment

This series network camera should be installed in a cool, dry place away from direct sunlight, inflammable, explosive substances and etc.

Please keep it away from the electromagnetic radiation object and environment.

Please make sure the CCD (CMOS) component is out of the radiation of the laser beam device.

Otherwise it may result in CCD (CMOS) optical component damage.

Please keep the sound ventilation.

Do not allow the water and other liquid falling into the camera.

Thunder-proof device is recommended to be adopted to better prevent thunder.

The grounding ports of the product are recommended to be grounded to further enhance the reliability of the camera.

6. Daily Maintenance

Please shut down the device and then unplug the power cable before you begin daily maintenance work.

Do not touch the CCD (CMOS) optic component. You can use the blower to clean the dust on the lens surface.

Always use the dry soft cloth to clean the device. If there is too much dust, please use the water to dilute the mild detergent first and then use it to clean the device. Finally use the dry cloth to clean the device.

Please put the dustproof cap to protect the CCD (CMOS) component when you do not use the camera.

7. Accessories

Be sure to use all the accessories recommended by manufacturer.

Before installation, please open the package and check all the components are included.

Contact your local retailer ASAP if something is broken in your package.

Accessory Name	Amount
Network Camera	1
Quick Start Guide	1
Installation Accessories Bag	1
CD	1

Table of Contents

1	General Introduction	1
1.1	Overview	1
1.2	Features	1
1.3	Specifications	2
1.3.1	Performance	2
1.3.2	Factory Default Setup	4
2	Framework	11
2.1	Device Components	11
2.2	Dimensions	12
2.3	Bidirectional talk	13
2.3.1	Device-end to PC-end	13
2.3.2	PC-end to the Device-end	13
2.4	Alarm Setup	14
2.4.1	Alarm Input and Output Connection	14
3	Device Installation	16
4	Quick Configuration Tool	18
4.1	Overview	18
4.2	Operation	18
5	Web Operation	21
5.1	Network Connection	21
5.2	Login and Logout	21
6	FAQ	24
	Appendix Toxic or Hazardous Materials or Elements	26

1 General Introduction

1.1 Overview

This series network camera integrates the traditional camera and network video technology. It adopts video data collection, transmission together. It can connect to the network directly without any auxiliary device.

This series product uses standard H.264 video compression technology, G.711a audio compression technology and etc, which maximally guarantees the video quality.

It supports PIR function to detect human body movement. It can activate the white light at the same to enable the record function at night. This series product supports real-time listening function when it is in real-time monitor mode. It supports dual-way bidirectional talk function.

It can be used alone or used in a network area. When it is used lonely, you can connect it to the network and then use a network client-end. Due to its multiple functions and various uses, this series network camera is widely used in many environments such as home, office, bank, road monitor and etc.

1.2 Features

User Management	<ul style="list-style-type: none">● Different user rights for each group, one user belongs to one group.● The user right shall not exceed the group right.
Data transmission	<ul style="list-style-type: none">● Wire network data transmission via the Ethernet port.● Wireless product series supports WIFI/3G wireless network data transmission.
Storage Function	<ul style="list-style-type: none">● Support central server backup function in accordance with your configuration and setup in alarm or schedule setting● Support record via Web and the recorded file are storage in the client-end PC.● Support Micro SD card storage (This function is optional. For some series product only.), alarm record or snapshot storage.● Support network storage function such as FTP.
Alarm Function	<ul style="list-style-type: none">● Real-time respond to external on-off alarm input, and video detect (This function is optional. For some series product only.)as user pre-defined activation setup and generate corresponding message in screen and audio prompt(allow user to pre-record audio file)● Real-time video detect: motion detect, camera masking, PIR human body movement detect.
Network Monitor	<ul style="list-style-type: none">● Network camera supports one-channel video data transmit to network terminal and then decode. Delay is within 270ms (network bandwidth support needed)● Max supports 20 connections. Max support 24Mbps output band width. The new query may fail if it has reached the threshold.● Adopt the following video transmission protocol: HTTP, TCP, UDP, MULTICAST, RTP/RTCP, RTSP and etc.● Support web access.
Network Management	<ul style="list-style-type: none">● Realize network camera configuration and management via Ethernet.● Support device management via web or client-end.● Support various network protocols.
Power	<ul style="list-style-type: none">● External power adapter DC12V.

	Warning! Do not connect these two power supplying sources to the device at the same time; it may result in device damage!
Assistant Function	<ul style="list-style-type: none"> ● Log function. Support system resource information and running status real-time display. ● Backlight compensation: screen auto split to realize backlight compensation to adjust the bright. ● Support video watermark function to avoid vicious video modification. ● Support picture parameter setup such as electronic shutter and gain setup. ● Support motion detect function. ● Support dual-stream, ACF. ● Built-in microphone and speaker (This function is optional. For some series product only.) ● Support PIR human body movement detect. ● Support white light alarm function.

1.3 Specifications

1.3.1 Performance

Please refer to the following sheet for product performance specification.

Model					
Parameter					
System	Main Processor	TI Davinci high performance DSP			
	OS	Embedded LINUX			
	System Resources	Support real-time network monitor, local record, and remote operation at the same time.			
	User Interface	Remote operation interface such as WEB, DSS, PSS.			
	System Status	Bit stream statistics, log, and software version.			
Video Parameter	Image Sensor	1/3-inch CMOS			
	Pixel	1280(H)*960(V)			
	Gain Control	Fixed/Auto			
	White Balance	Manual/Auto			
	BLC	On/Off			
	Exposure Mode	Manual/Auto PAL: It ranges from 1/3 to 1/10000. NTSC: It ranges from 1/4 to 1/10000.			
	Video Compression Standard	H.264/ H.264B/MJPEG			
	Video Rate	Frame	PAL: Main stream(1280*960@15fps) extra stream(352*288@15fps), Main stream(1280*720@25fps) extra stream(352*288@25fps) NTSC: Main stream(1280*960@15fps) extra stream(352*240@15fps), Main stream(1280*720@30fps) extra stream(352*240@30fps)		
Video Bit Rate	H.264: 56Kbps-6144Kbps MJPEG is adjustable and bit rate is adjustable. Support customized setup.				

	Video Flip	Support mirror. Support flip function.	
	Snapshot	Max 1f/s snapshot. File extension name is JPEG.	
	Privacy Mask	Supports max 4 privacy mask zones	
	Video Setup	Support parameter setup such as bright, contrast.	
	Video Information	Channel title, time title, motion detect, camera masking.	
	Lens	3.6mm. Fixed focus. Angle of view: 70°(H) *51.5°(V)	
	Lens Interface	M12. Lens is the default accessories	
Audio	Audio Bit Stream		
	Audio Input/Output		Built-in microphone and speaker
	Audio Bit Rate		8kbps 16bit
	Audio Compression Standard		G.711A/G.711Mu/PCM
Video	Motion Detect	396 (18*22) detection zones; sensitivity level ranges from 1 to 6 (The 6 th level has the highest sensitivity) Activation event: video storage, image snapshot, log, email SMTP function and etc.	
	Camera Masking	Sensitivity level ranges from 1 to 6. Each sensitivity level is the percentage of the privacy mask zone. Activation event: alarm device, audio/video storage, image snapshot, log, email SMTP function and etc.	
Alarm Port			1-channel input and 1-channel output (on-off)
Record and Backup	Record Priority		Manual>Video detect>Schedule
	SD Card Storage		Support Micro SD card hot-swap
	Storage Management		
Network	Wire Network	1-channel wire Ethernet port, 10/100 Base-T Ethernet	
	Wireless Network		IEEE802.11a/b/g/n , built-in antenna
	Network Protocol	Standard HTTP, TCP/IP, ARP, IGMP, ICMP, RTSP, RTP,UDP, RTCP, SMTP, FTP, DHCP, DNS, DDNS, PPPOE, UPNP, NTP, Bonjour, SNMP.	
	Remote Operation IR light	Monitor, system setup, file download, log information, maintenance , upgrade and etc.	
AUX Port	Compensation Light	White light (Max 1W) Auto turn on white light when an alarm is activated. The light can last until the alarm ends. Support compensation light brightness setup via the Web.	
	PIR Human Body Movement Detect	Max distance 7m under normal room temperature. Support compensation light activation, record at light.	
	WPS		Click one button to enable WIFI connection

General Parameter	Power		DC 12V
	Power Consumption		6W MAX
	Working Temperature		-10℃~+50℃
	Working Humidify	10%~90%	
	Dimensions(mm)	66.6*99.5*131.2	
	Weight	229g (Excluding box)	
	Installation	Installation with the bracket.	

1.3.2 Factory Default Setup

Please refer to the following sheet for factory default setup information.

Setup	Item	Default Setup			
Camera	Conditions	Brightness	50		
		Contrast	50		
		Saturation	50		
		Sharpness	50		
		Anti-flicker	Outdoor		
		Exposure Mode	Auto		
		Gain Range	0-50		
		Scene Mode	Auto		
		Day/night Mode	Auto		
		BLC	Off		
		Mirror	Off		
		Flip	Off		
	Video	Video bit stream	Main Stream	Bit stream type	General
Encode mode				H.264	
Resolution				720P (1280*720)	
Frame Rate (FPS)				PAL: 25 NTSC:30	
Bit Rate Type				CBR	
Recommended Bit				1536-6144 Kb/S	
Bit Rate				4096	
Frame Interval				50	
Watermark				Enable	
Watermark character				DigitalCCTV	
		Sub	Enable	Enable	

Setup		Item		Default Setup			
		Stream	Bit stream type	General			
			Encode mode	H.264B			
			Resolution	CIF(352*288/352*240)			
			Frame Rate (FPS)	PAL: 25 NTSC:30			
			Bit Rate Type	CBR			
			Recommended Bit	192-1024Kb/S			
			Bit Rate	1024			
			Frame Interval	50			
		Snapshot	Snapshot Type	General			
			Image Size	720P (1280*720)			
			Quality	5			
			Interval	1s			
		Video Overlay	Privacy Mask	Disable			
			Channel Title	Enable			
			Time Title	Enable			
		Path	Snapshot Path	C:\PictureDownload			
			Record Path	C:\RecordDownload			
Audio	Main Stream	Enable				Enable	
		Encode Mode				G.711A	
	Extra Stream	Enable				Disable	
Network	TCP/IP	Host Name	IPC				
		Ethernet Card	Wire(default)				
		Mode	Static				
		Mac Address	Device MAC address when it is shipped out of the factory				
		IP Version	IPV4				
		IP Address	192.168.1.108				
		Subnet Mask	255.255.255.0				
		Default Gateway	192.168.1.1				
		Preferred DNS	8.8.8.8				
		Alternate DNS	8.8.8.8				
		Enable ARP/Ping set device IP address service	Enable				
	Connection	Max Connection	10				

Setup	Item	Default Setup			
		TCP Port	37777		
		UDP Port	37778		
		HTTP Port	80		
		RTSP Port	554		
		HTTPs Enable	Disable		
		HTTPs Port	443		
	PPPoE	Enable	Disable		
		Username	none		
		Password	N/A		
	DDNS	Server Type	Disable, CN99 DDNS		
		Server IP	none		
		Server Port	80		
		Domain Name	none		
		User	none		
		Password	****		
		Update Period	10 minutes		
	IP Filter	Trusted sites	Disable		
	SMTP(Email)	SMTP Server	none		
		Port	25		
		Anonymity	Disable		
		User Name	anonymity		
		Password	****		
		Sender	none		
		Authentication (Encryption mode)	N/A		
		Title (Subject)	IPC Message		
		Attachment	N/A		
		Mail Receiver	0 second		
		Email Test	Disable, interval=60 seconds		
	UPnP	Enable UPnP	Enable		
	SNMP	SNMP Port	161		
Read Community		public			
Write Community		private			

Setup	Item		Default Setup			
		Trap Address	N/A			
		Trap Port	162			
		SNMP Version	SNMP v1: Disable SNMP v2: Disable SNMP v3: Disable			
	Bonjour	Enable	Enable			
		Server Name	"SN". It depends on the device.			
	Multicast	Multicast Address	239.255.42.42			
		Port	36666			
	WIFI					Disable
						PIN Enable
						PIN Null
						SSID Null
						Button Disable
	QoS	Real-time Monitor	0			
		Command	0			
		Enable Wireless QoS	Disable			
Event	Video detect	Motion Detect	Enable	Disable		
			Anti-dither	5 seconds		
			Sensitivity	3		
			Compensation Light	Disable		
			Compensation Light Delay	10 seconds		
			Record Channel	Enable		
			Record Delay	10 seconds		
			Relay out		Enable	Enable
			Alarm Delay		10 seconds	10 seconds
			Send Email	Disable		
			Snapshot	Disable		
	Video Masking	Enable	Disable			
		Record Channel	Enable			

Setup	Item			Default Setup			
			Record Delay	10 seconds			
			Relay out				Enable
			Alarm Delay				10 seconds
			Send Email	Disable			
			Snapshot	Disable			
	Alarm	PIR Alarm	Enable	Disable			
			Anti-dither	0 second			
			Compensation Light	Enable			
			Compensation Light Delay	10 seconds			
			Record Channel	Enable			
			Record Delay	10 seconds			
			Relay out				Enable
			Alarm Delay				10 seconds
			Send Email	Disable			
			Snapshot	Disable			
		Alarm Activation	Enable				Disable
			Relay in				Alarm 1
			Anti-dither				0 second
			Sensor Type				NO
			Compensation Light				Disable
			Compensation Light Delay				10 seconds
			Record Channel				Enable
			Record Delay				Enable
			Relay out				10 seconds
	Alarm Delay					10 seconds	
	Send Email					Disable	
	Snapshot					Disable	
	Compensation Light	Enable	Disable				
		Period	All Week Period: 00:00:00-23:59:59.				
	Abnormity	No Card SD	Enable	N/A	N/A	Disable	Disable
			Relay out			Enable	Enable
			Relay out Delay			10 seconds	10 seconds
Send email					Disable	Disable	

Setup	Item		Default Setup				
		Capacity Warning	Enable			Disable	
			Capacity Limit			10%	
			Relay out			Enable	
			Relay out Delay			10 seconds	
		SD Card Error	Enable			Disable	
			Relay out			Enable	
			Relay out Delay			10 seconds	
			Send email			Disable	
		Disconnection	Enable	Disable			
			Record	Enable			
			Record Delay	10 seconds			
			Relay out			Enable	
			Relay out Delay			10 seconds	
		IP Conflict	Enable				
			Record				
			Record Delay			Enable	
	Relay out				10 seconds		
	Relay out Delay						
	Storage	Storage Position	Local Storage			Enable	
			FTP			Disable	
FTP		Enable FTP	Disable				
		Server IP	N/A				
		Port	21				
		Username	anonymous				
		Password	N/A				
		Remote path	Share				
		Emergency Storage (Local)			Disable		
Record Control		Pack Duration	8 minutes				
		Pre-record	5 seconds				
		Disk Full	Overwrite				
		Record Mode	Auto				
		Record Stream Bit	Main Stream				
System	General	Local Host	Device No	Device factory SN			
			Language	English			
			Video Standard	NTSC			
	Date and	Date Format	Y-M-D				

Setup	Item		Default Setup			
	time	Time Format	24H			
		Time Zone	GMT+08:00			
		System Time	Sync			
		DST	Disable			
		DST Type	Week			
		Start Time	00:00:00 of the first Sunday of the month			
		End Time	00:00:00 of the second Monday of the month			
		NTP	Disable			
		NTP Server	clock.isc.org			
		Port	37			
		Update Period	10 minutes			
	Auto Maintenance	Auto Reboot	Enable. 02:00 Tuesday			
		Auto Delete Old Files	Disable			

2 Framework

2.1 Device Components

You can refer to the following figure for component information. See Figure 2-1.

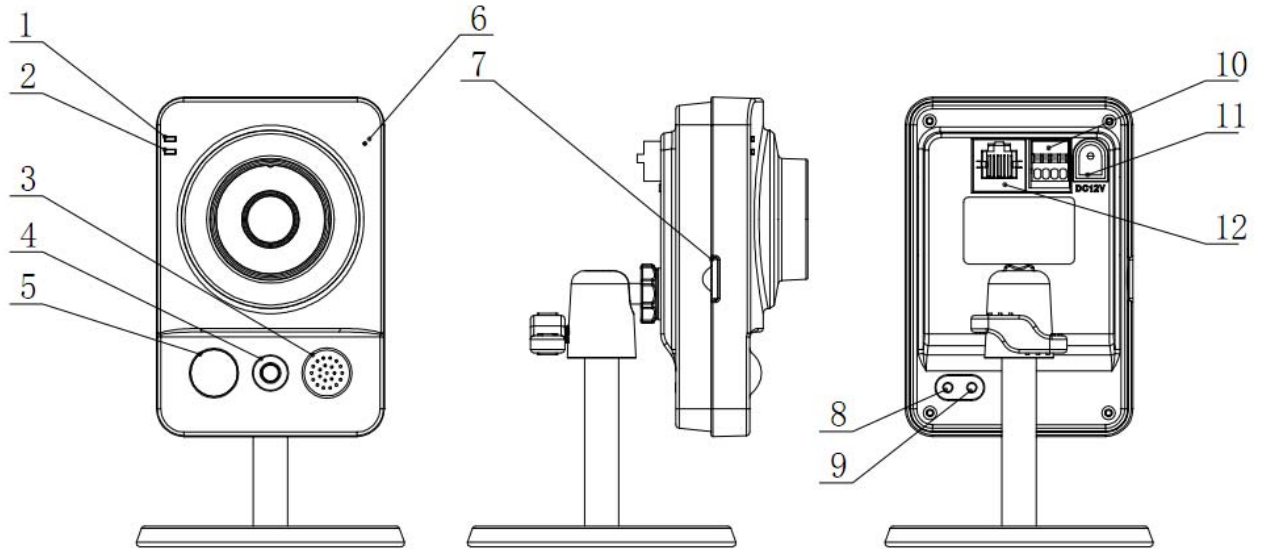


Figure 2-1

Please refer to the following sheet for detailed information.

SN	Port Name	Indicator	Connector	Note
1	Power indicator light	POWER	/	<ul style="list-style-type: none"> When system boots up—Green light becomes on. When system is upgrading – Green light flashes. Interval is 0.5s. When system is alarming—Green light flashes. Interval is 0.2s.
2	Network indicator light	NET	/	<ul style="list-style-type: none"> Wire network connection—Red light is on. Wireless network connection—Green light is on.
3	Speaker	/	/	Output audio signal. (This function is optional. For some series product only.)
4	White light	/	/	Can activate motion detect, PIR human body movement detect, external alarm.

SN	Port Name	Indicator	Connector	Note
5	PIR sensor	PIR	/	Passive IR motion detect port. It can detect the IR object movement (such as human body or other heating object).
6	Microphone	/	/	Directly receive audio signal. (This function is optional. For some series product only.).
7	Micro SD card	Micro SD	Micro SD card slot	SD card storage. (This function is optional. For some series product only.).
8	Reset button	Reset	/	Restore factory default setup. When system is running normally, press the RESET button for at least 5 seconds, system can restore factory default setup.
9	WPS button	WPS	Fast wireless connection	Press the WPS button of the router and the device respectively for at least 2 seconds. Usually the device can connect to the router within 1 minute. Please note it is for wireless series product only and it is for the wireless router of the WPS function.
10	Alarm pin	/	I/O port	Alarm signal input/output (This function is optional. For some series product only.).
11	Power port	DC12V	/	Input DC 12V power.
12	Network port	LAN	Ethernet port	<ul style="list-style-type: none"> ● Connect to standard Ethernet

2.2 Dimensions

Please refer to the following figure for dimension information. The unit is mm. See Figure 2-2.

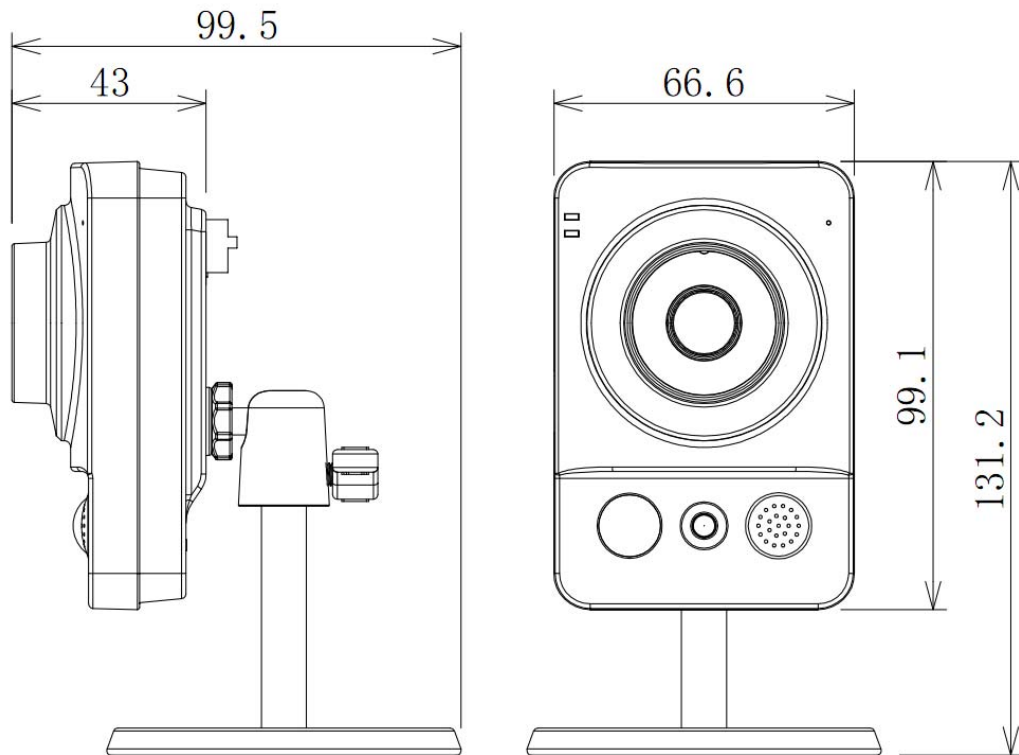


Figure 2-2

2.3 Bidirectional talk

2.3.1 Device-end to PC-end

Device Connection

Please connect the speaker or the MIC to the audio input port in the device rear panel. Then connect the earphone to the audio output port in the PC.

Login the Web and then click the Audio button to enable the bidirectional talk function.

You can see the button becomes orange after you enabled the audio talk function.

Click Audio button again to stop the bidirectional talk function.

Listening Operation

Speak or play music at the PC-end, you can use the earphone or the sound box of the PC-end to listen the audio information from the device-end.

2.3.2 PC-end to the Device-end

Device Connection

Connect the speaker or the MIC to the audio input port in the PC and then connect the earphone to the audio output port of the device.

Login the Web and then click the Audio button to enable the bidirectional talk function.

You can see the button becomes orange after you enabled the audio talk function.

Click Audio button again to stop the bidirectional talk function.

Listening Operation

Speak or play music at the PC-end, you can use the built-in speaker of the device-end to listen.

Note

Please go to the Master Volume interface of the PC to set first if you want to use the dual-way bidirectional talk. Please select Front Mic mode in the record control interface. (You can select microphone enhanced in Advanced interface if the audio is too low.)

2.4 Alarm Setup

The alarm setup interface is shown as below. See Figure 2-3.

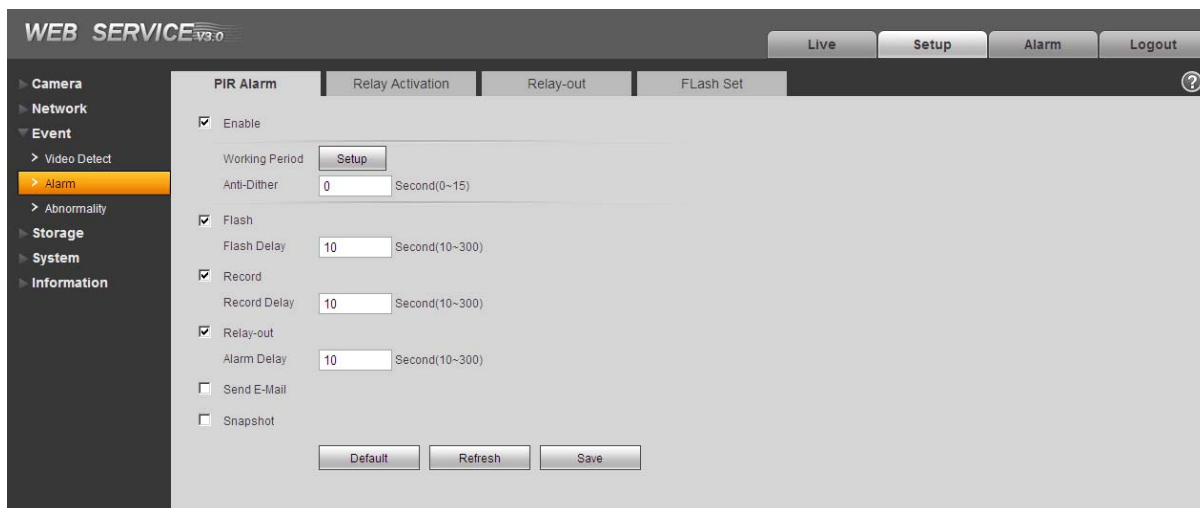


Figure 2-3

2.4.1 Alarm Input and Output Connection

Please refer to the following figure for alarm input information. See Figure 2-4.

Alarm input: When the input signal is idle or grounded, the device can collect the different statuses of the alarm input port. When the input signal is connected to the 3.3V or is idle, the device collects the logic "1". When the input signal is grounded, the device collects the logic "0".

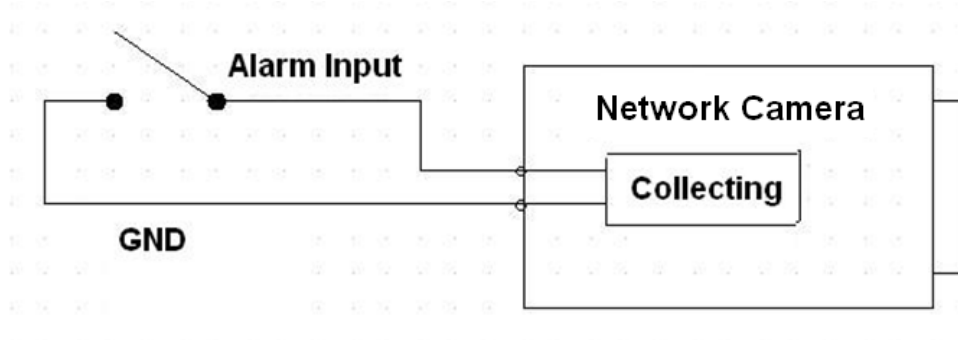


Figure 2-4

Please refer to the following figure for alarm output information. See Figure 2-5.

Port NO and Port C composes an on-off button to provide the alarm output.

This button is normal open. The button becomes off when there is an alarm output.

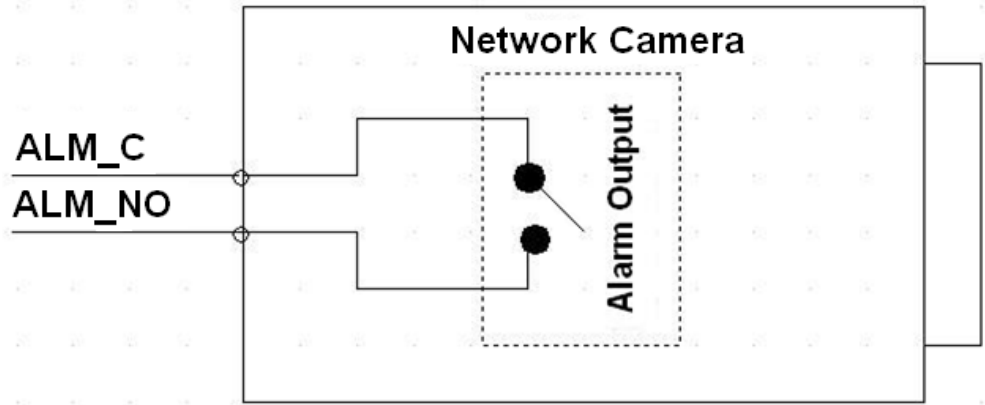


Figure 2-5

3 Device Installation

This series camera support two installation modes: wall mount and pendant mount. See Figure 3-1 and Figure 3-2.

Important

Please make sure the installation surface can min support the 3X weight of the camera and the bracket.

Step 1

Paste the installation positioning map on the installation surface such as wall, ceiling or the wood.

Step 2

Dig holes in the installation surface according to the installation positioning map.

Step 3

Insert the expansion bolts from the accessories bag to the holes you just dug. If it is the wood surface you can skip to the next step.

Step 4

Use the screws from the accessories bag to secure the device firmly.

Step 5

Connect the cable and then boot up the device.

Step 6

Loosen the adjust knob for a little bit, adjust the camera to proper surveillance position according to your actual requirements.

Step 7

Secure the knob of the bracket to fix the camera.

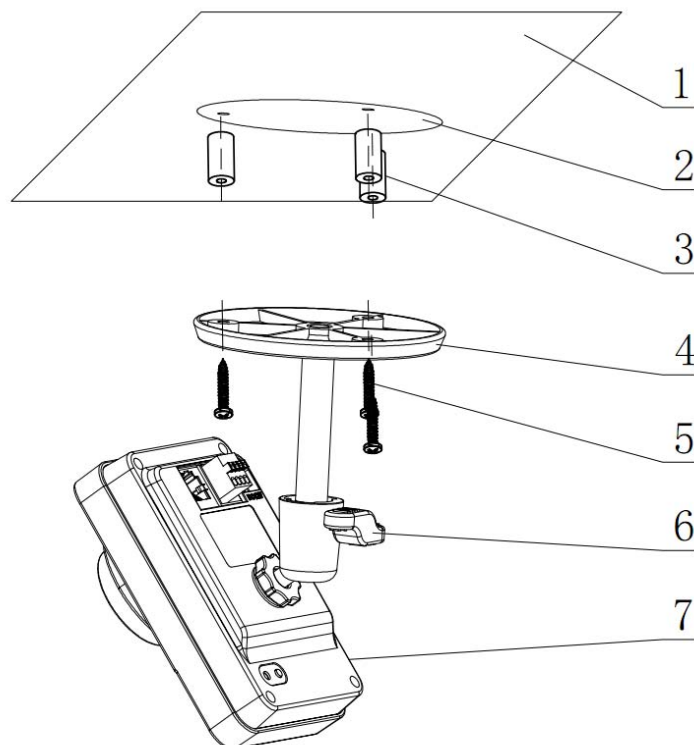


Figure 3-1

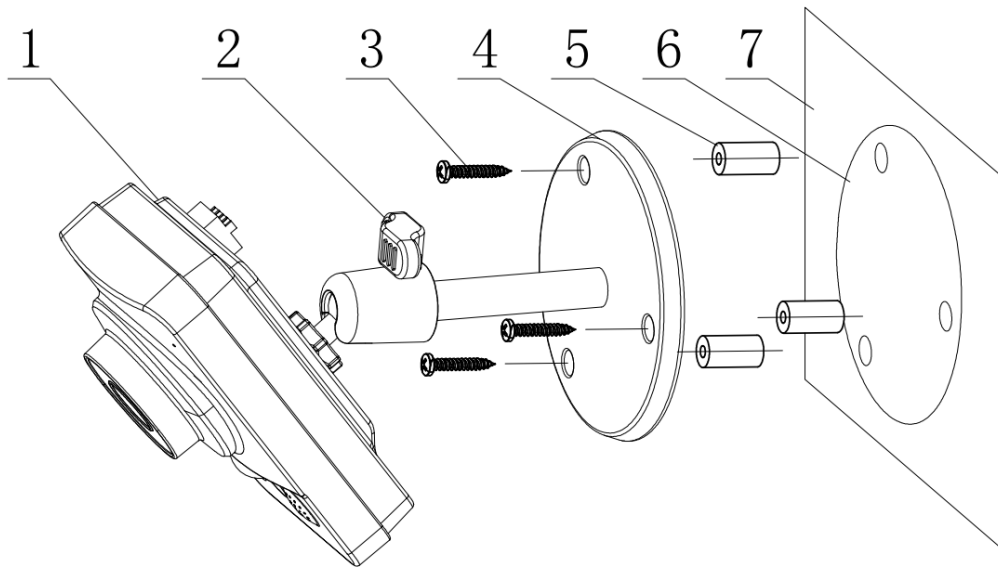


Figure 3-2

4 Quick Configuration Tool

4.1 Overview

Quick configuration tool can search current IP address, modify IP address. At the same time, you can use it to upgrade the device.

Please note the tool only applies to the IP addresses in the same segment.

4.2 Operation

Double click the “ConfigTools.exe” icon, you can see an interface is shown as in Figure 4-1.

In the device list interface, you can view device IP address, port number, subnet mask, default gateway, MAC address and etc.

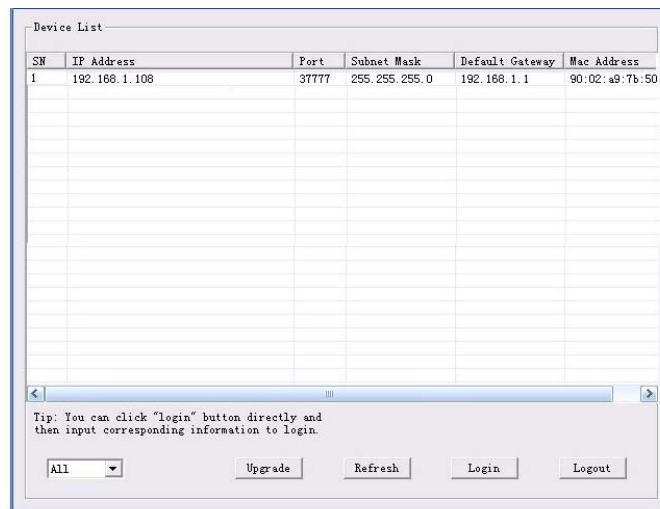


Figure 4-1

Select one IP address and then right click mouse, you can see an interface is shown as in Figure 4-2.

Note:

You can set the IP address, subnet mask and gateway for the network camera and PC. Please note network camera address and PC IP address shall be in the same network segment if there is no router. Network camera default IP address is 192.168.1.108. If there is a router, please set the corresponding gateway and subnet mask.

The factory default user name is **admin** and password is **admin**. For security reasons, please modify your password after you first login.

For detailed WEB operation, please refer to the Web Operation Manual in the resource CD.

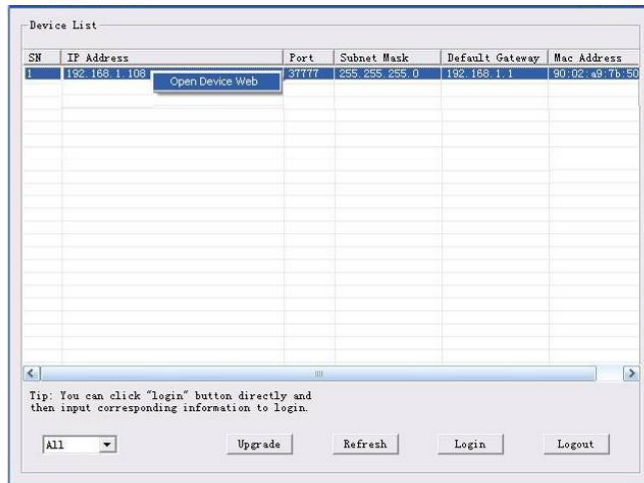


Figure 4-2

Select the “Open Device Web” item; you can go to the corresponding web login interface. See Figure 4-3.

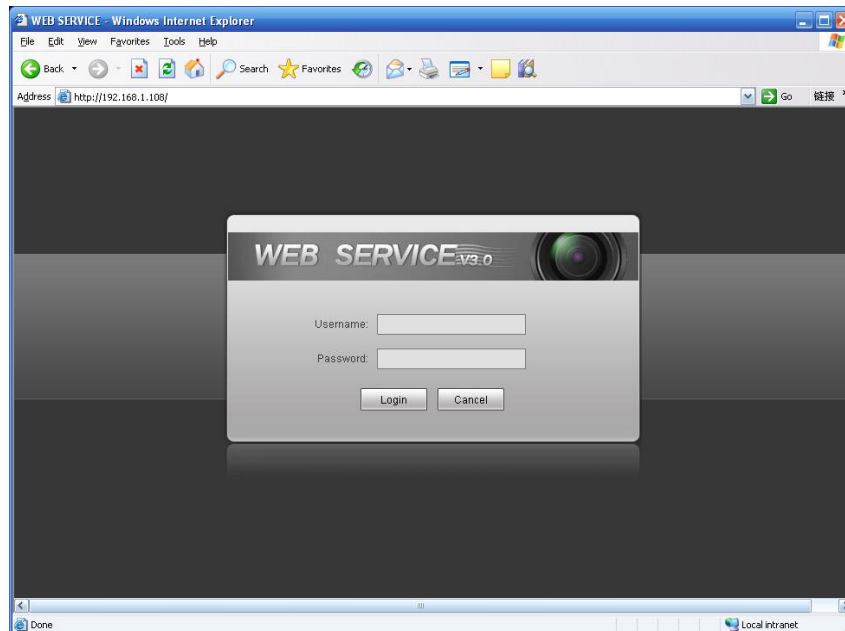


Figure 4-3

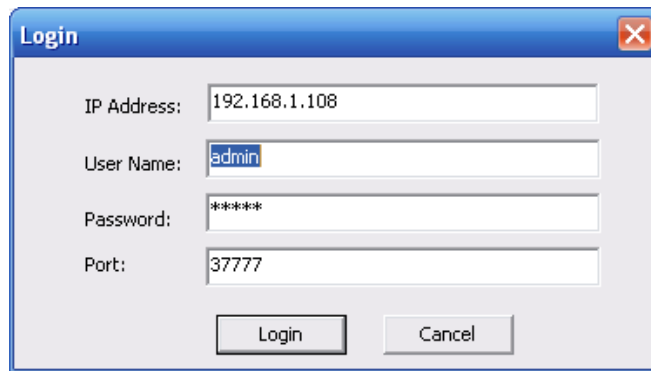
If you want to modify the device IP address without logging in the device web interface, you can go to the configuration tool main interface to set.

In the configuration tool search interface (Figure 4-1), please select a device IP address and then double click it to open the login interface. Or you can select an IP address and then click the Login button to go to the login interface. See Figure 4-4.

In Figure 4-4, you can view device IP address, user name, password and port. Please modify the corresponding information to login.

Please note the port information here shall be identical with the port value you set in TCP port in Web Network interface. Otherwise, you can not login the device.

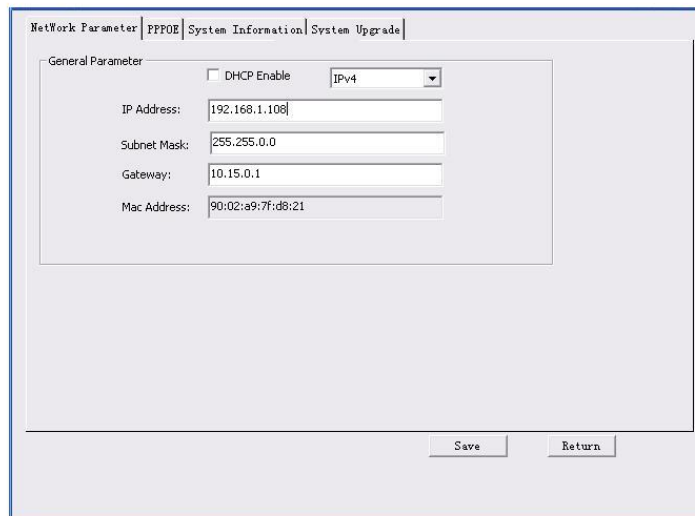
If you are using device background upgrade port 3800 to login, other setups are all invalid.



A login dialog box titled "Login" with a close button in the top right corner. It contains four input fields: "IP Address" with the value "192.168.1.108", "User Name" with the value "admin", "Password" with the value "*****", and "Port" with the value "37777". At the bottom, there are two buttons: "Login" and "Cancel".

Figure 4-4

After you logged in, the configuration tool main interface is shown as below. See Figure 4-5.



The main interface of the configuration tool, titled "Network Parameter". It has four tabs: "Network Parameter", "PPPOE", "System Information", and "System Upgrade". The "Network Parameter" tab is active. Inside this tab, there is a "General Parameter" section with a "DHCP Enable" checkbox (unchecked) and a "IPv4" dropdown menu. Below this are five input fields: "IP Address" (192.168.1.108), "Subnet Mask" (255.255.0.0), "Gateway" (10.15.0.1), and "Mac Address" (90:02:a9:7f:d8:21). At the bottom right, there are "Save" and "Return" buttons.

Figure 4-5

For detailed information and operation instruction of the quick configuration tool, please refer to the *Quick Configuration Tool User's Manual* included in the resources CD.

5 Web Operation

This series network camera product supports the Web access and management via PC. Web includes several modules: monitor channel preview, system configuration, alarm and etc.

5.1 Network Connection

Please follow the steps listed below for network connection.

- Make sure the network camera has connected to the network properly.
- Please set the IP address, subnet mask and gateway of the PC and the network camera respectively. Network camera default IP address is 192.168.1.108. Subnet mask is 255.255.255.0. Gateway is 192.168.1.1
- Use order ping `***.***.***.***`(* IP camera address) to check connection is OK or not.

5.2 Login and Logout

Open IE and input IP camera address in the address bar.

For example, if your camera IP is 192.168.1.108, then please input `http:// 192.168.1.108` in IE address bar. See Figure 5-1.

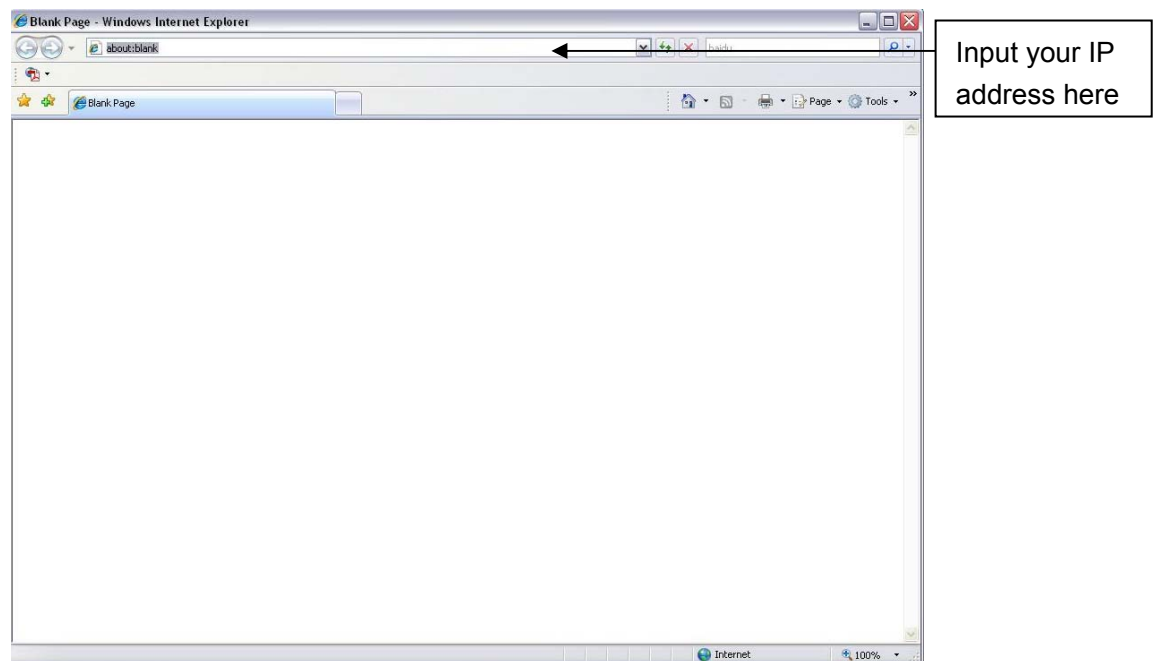


Figure 5-1

The login interface is shown as below. See Figure 5-2.

Please input your user name and password.

Default factory name is admin and password is admin.

Note: For security reasons, please modify your password after you first login.

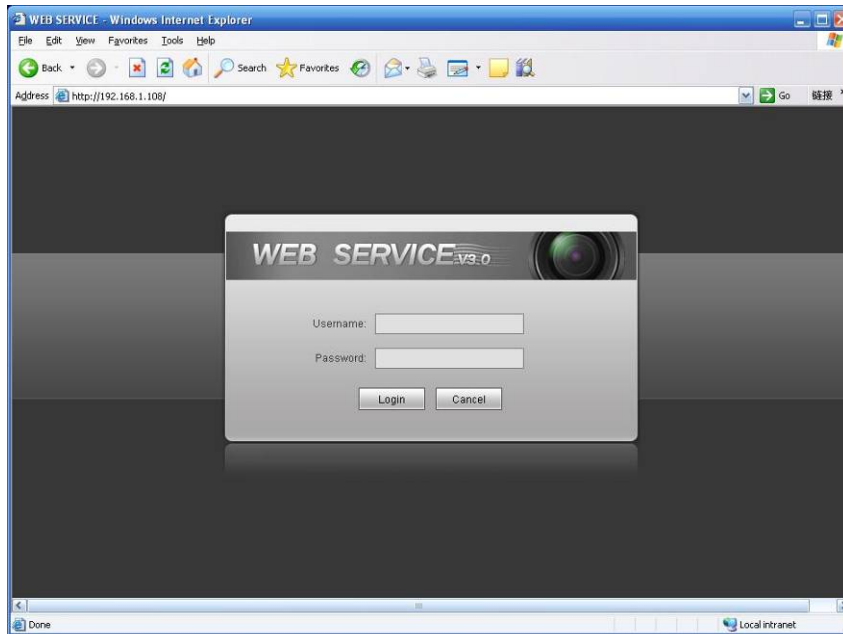


Figure 5-2

If it is your first time to login in, system pops up warning information to ask you whether install control webrec.cab or not after you logged in for one minute. Please click OK button, system can automatically install the control. When system is upgrading, it can overwrite the previous Web too. If you can't download the ActiveX file, please check whether you have installed the plug-in to disable the control download. Or you can lower the IE security level. See Figure 5-3.

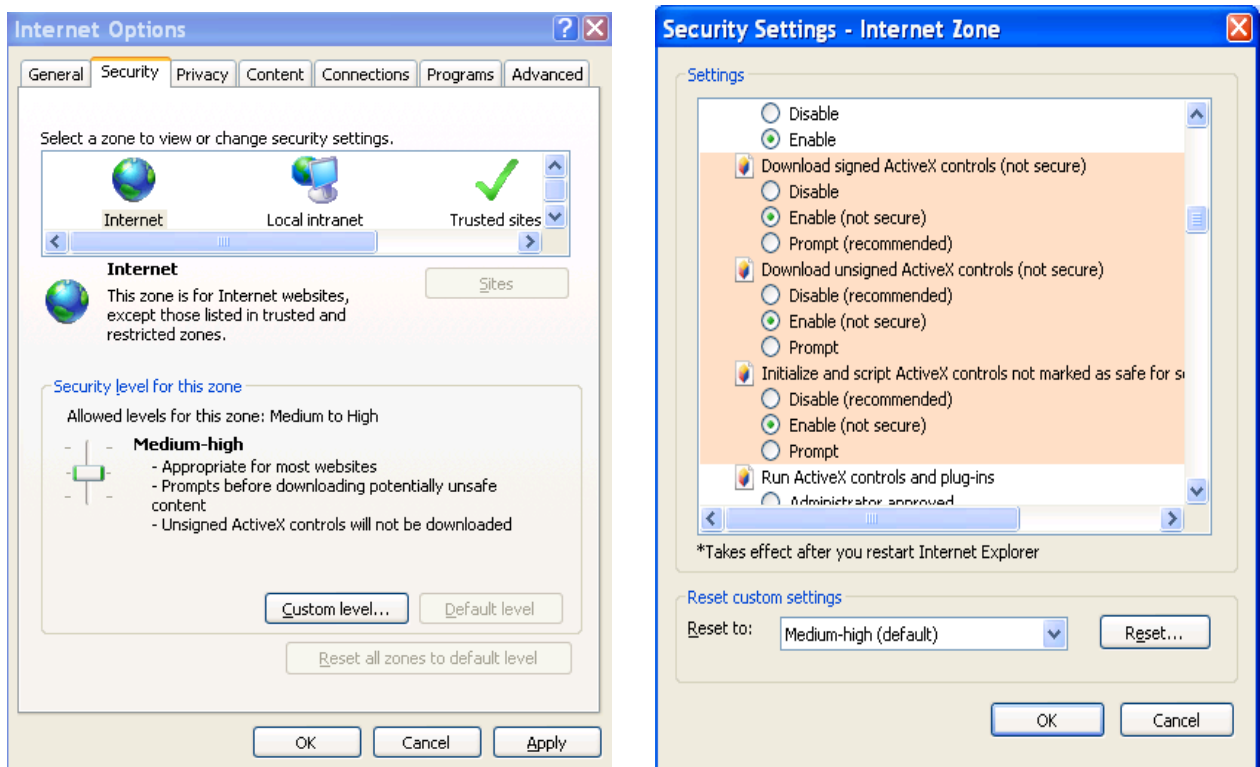


Figure 5-3

After you logged in, you can see the main window. See Figure 5-4.

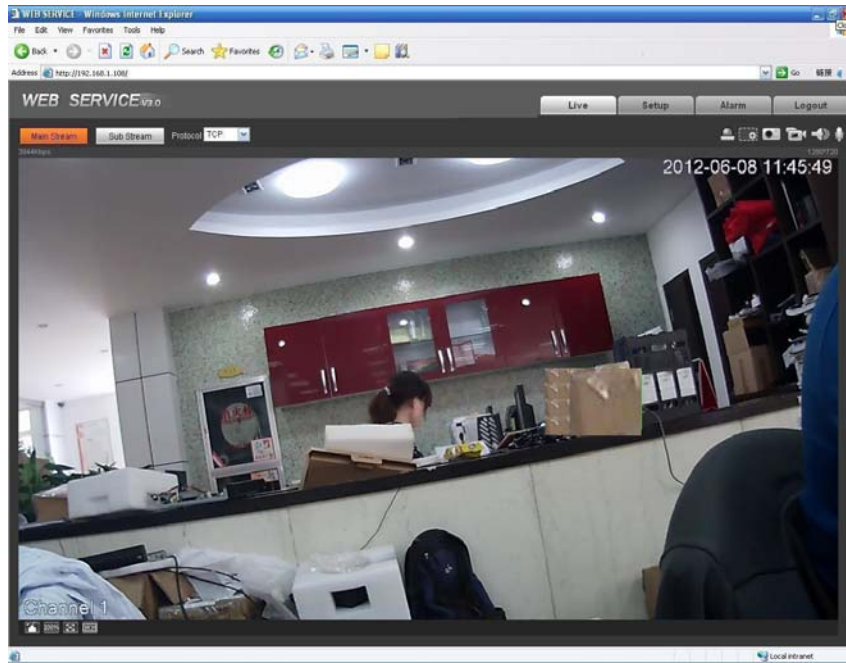


Figure 5-4

Please refer to the Web Operation Manual included in the resource CD for detailed operation instruction.

6 FAQ

Bug	
I can not boot up the device.	Please click RESET button for at least five seconds to restore factory default setup.
SD card hot swap	Before draw out SD card, please stop record or snapshot first and then wait for at least 15 seconds to remove the SD card. All the operations before is to maintain data integrity. Otherwise you can lose all the data in the SD card!
SD card write times	Do not set the SD card as the storage media to storage the schedule record file. It may damage the SD card duration.
I can not use the disk as the storage media.	When disk information is shown as hibernation or capacity is 0, please format it first (Via Web).
Recommended SD card brand	Kingston 4GB,Kingston 16GB,Kingston32GB,Transcend 16GB, SanDisk 4GB, SanDisk 32GB. Usually we recommend the 4GB (or higher) or industry-level high speed card in case the slow speed results in data loss.
I can not use PIR function.	There are heating sources around the device environment. It may result in false alarm. The detect object is too long. The PIR sensitivity becomes lower greatly when the distance is more than 6m.
I can not upgrade the device via network.	When network upgrade operation failed, you can use port 3800 to continue upgrade.
I can not login the client-end or the WEB.	<ul style="list-style-type: none"> ● For Windows OS 98 or Windows ME user, if you can not install the client-end or can not view after the installation. We recommend the win2000sp4 OS or install the client-end of the low version. ● The Active X control is blocked. ● The display card version shall be dx8.1 or higher. ● Network connection error occurred. ● Invalid network setup. ● Invalid user name or password.
I can not play the download file.	<ul style="list-style-type: none"> ● There is no player. ● There is no DX8.1 or higher. ● For the MEDIA PLAYER, there shall be Div X503Bundle.exe plugin if you play the .AVI file. ● For Windows XP user, you need to install the plugin DivX503Bundle.exe and ffdsho-2004 1012.exe.
To guarantee setup update	After you modified the important setup, please reboot the device via the software to make sure the setup has been updated to the storage medium.

Bug	
Power adapter	<ul style="list-style-type: none"><li data-bbox="539 224 1393 320">● The general power adapter can work ranging from 0°C to 40 °C. The device may result in unstable power supply when the temperature exceeds the working temperature.<li data-bbox="539 331 1393 389">● Please replace an industry-level power adapter if you are using in the harsh environments.

Appendix Toxic or Hazardous Materials or Elements

Component Name	Toxic or Hazardous Materials or Elements					
	Pb	Hg	Cd	Cr VI	PBB	PBDE
Circuit Board Component	○	○	○	○	○	○
Device Case	○	○	○	○	○	○
Wire and Cable	○	○	○	○	○	○
Packing Components	○	○	○	○	○	○
Accessories	○	○	○	○	○	○

O: Indicates that the concentration of the hazardous substance in all homogeneous materials in the parts is below the relevant threshold of the SJ/T11363-2006 standard.

X: Indicates that the concentration of the hazardous substance of at least one of all homogeneous materials in the parts is above the relevant threshold of the SJ/T11363-2006 standard. During the environmental-friendly use period (EFUP) period, the toxic or hazardous substance or elements contained in products will not leak or mutate so that the use of these (substances or elements) will not result in any severe environmental pollution, any bodily injury or damage to any assets. The consumer is not authorized to process such kind of substances or elements, please return to the corresponding local authorities to process according to your local government statutes.

Note

- **This user's manual is for reference only. Slight difference may be found in user interface.**
- **All the designs and software here are subject to change without prior written notice.**
- **All trademarks and registered trademarks mentioned are the properties of their respective owners.**
- **If there is any uncertainty or controversy, please refer to the final explanation of us.**
- **Please visit our website for more information.**