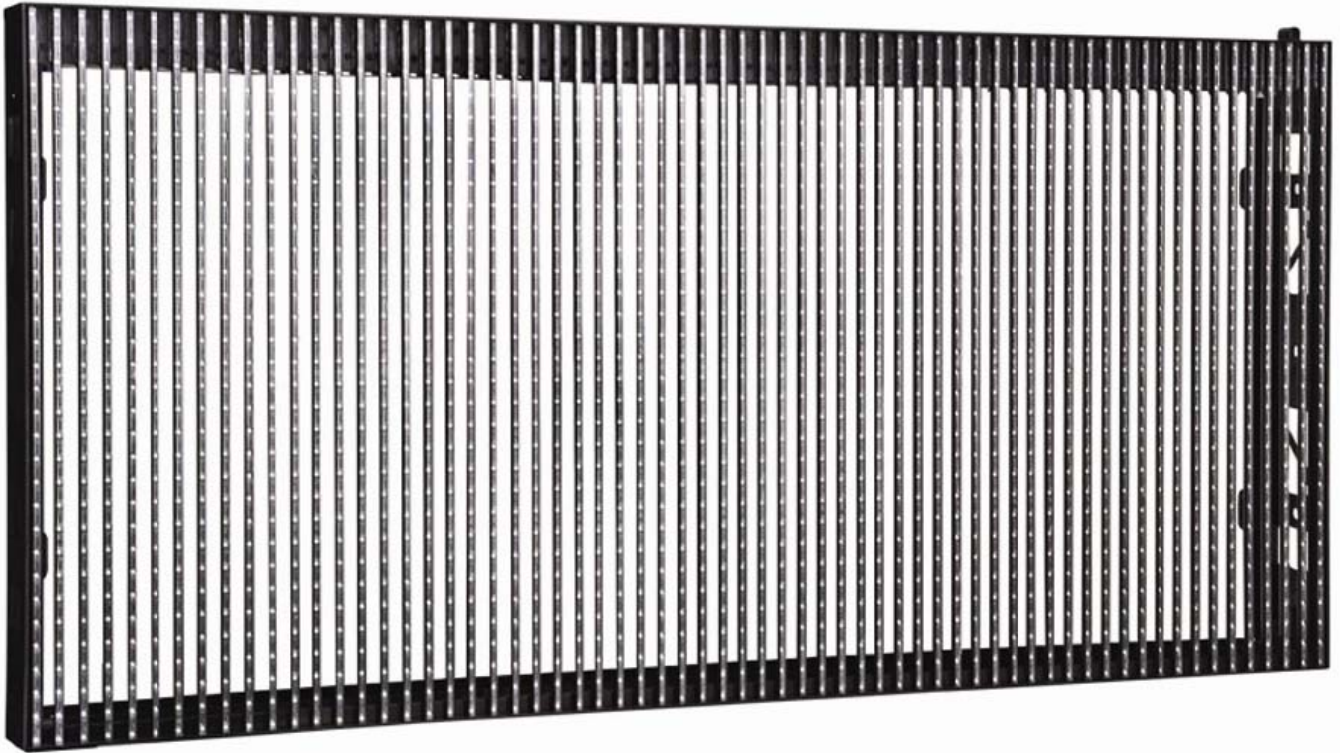


VDPLAT5

FULL COLOR LED SCREEN P25 - SMD LED - 1600x800mm

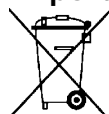


User manual

1. Introduction

To all residents of the European Union

Important environmental information about this product



This symbol on the device or the package indicates that disposal of the device after its lifecycle could harm the environment. Do not dispose of the unit (or batteries) as unsorted municipal waste; it should be taken to a specialized company for recycling. This device should be returned to your distributor or to a local recycling service. Respect the local environmental rules.

If in doubt, contact your local waste disposal authorities.

Thank you for choosing HQPower™! Please read the manual thoroughly before bringing this device into service. If the device was damaged in transit, don't install or use it and contact your dealer.

For more info concerning this product and the latest version of this manual, please visit our website www.hqpower.eu.

2. Safety Instructions

	Be very careful during the installation: touching live wires can cause life-threatening electroshocks.
	Always disconnect mains power when device not in use or when servicing or maintenance activities are performed. Handle the power cord by the plug only.
	Keep this device away from children and unauthorized users.
	Caution: device heats up during use.
	Do not stare directly at the light source , as this may cause <ul style="list-style-type: none"> - epileptic seizure in sensitive people - temporarily loss of sight (flash blindness) - permanent (irreversible) eye damage
	There are no user-serviceable parts inside the device. Refer to an authorized dealer for service and/or spare parts.

- This device falls under protection class I. It is therefore essential that the device be earthed. Have a qualified person carry out the electric connection.
- Make sure that the available voltage does not exceed the voltage stated in the specifications of this manual.
- Do not crimp the power cord and protect it against damage. Have an authorised dealer replace it if necessary.
- Respect a minimum distance of 0.5 m between the device's light output and any illuminated surface.
- Use an appropriate safety cable to fix the device (e.g. **VDLSC7** or **VDLSC8**).

3. General Guidelines

Refer to the **Velleman® Service and Quality Warranty** on the last pages of this manual.

	Keep this device away from dust and extreme heat.
	Protect this device from shocks and abuse. Avoid brute force when operating the device.

- Familiarise yourself with the functions of the device before actually using it. Do not allow operation by unqualified people. Any damage that may occur will most probably be due to unprofessional use of the device.
- All modifications of the device are forbidden for safety reasons. Damage caused by user modifications to the device is not covered by the warranty.

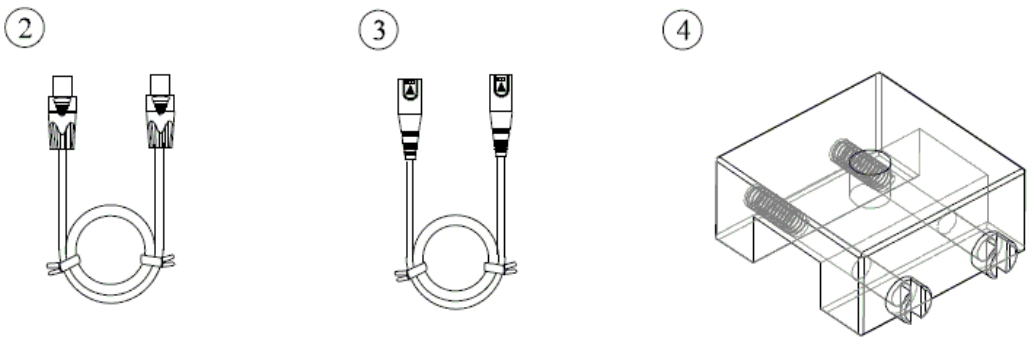
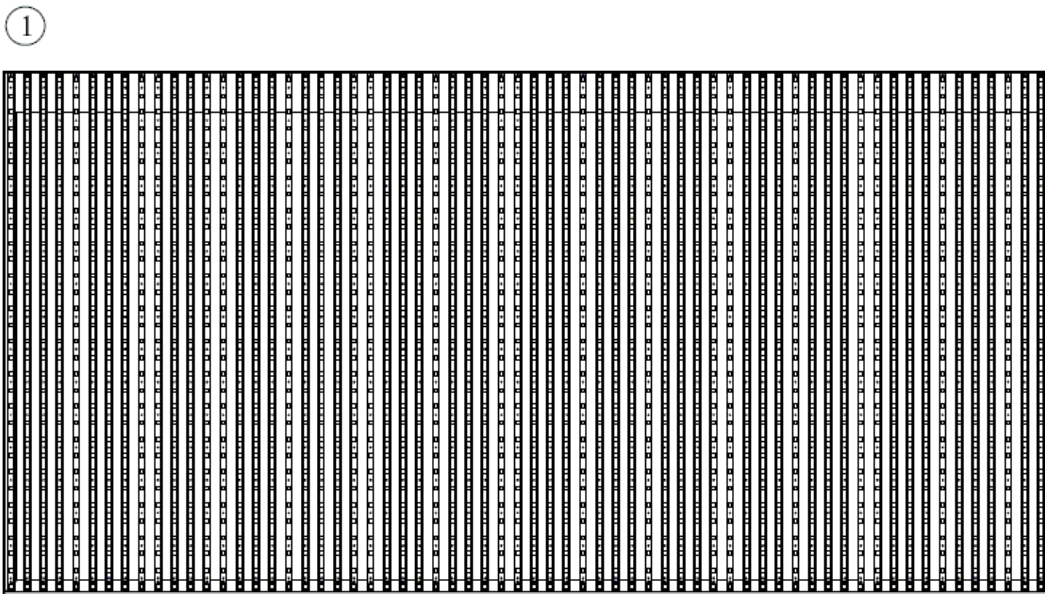
VDPLAT5

- Only use the device for its intended purpose. All other uses may lead to short circuits, burns, electroshocks, lamp explosion, crash, etc. Using the device in an unauthorised way will void the warranty.
- Damage caused by disregard of certain guidelines in this manual is not covered by the warranty and the dealer will not accept responsibility for any ensuing defects or problems.
- A qualified technician should install and service this device.
- Do not switch the device on immediately after it has been exposed to changes in temperature. Protect the device against damage by leaving it switched off until it has reached room temperature.
- This device is designed for professional use on stage, in discos, theatres, etc. The **VDPAT5** must be used with an alternating current of 230 VAC~50 Hz.
- Lighting effects are not designed for permanent operation: regular operation breaks will prolong their lives.
- Use the original packaging if the device is to be transported.
- Keep this manual for future reference.

4. Features

- full-colour screen with SMD LEDs for stage and other applications such as special events, advertising...
- lightweight aluminium alloy frame, super-thin design
- easy to install, even without tools
- for indoor and outdoor use (IP54)
- accessories (not incl.)
 - flightcase for 4 x VDPLAT5: VDPLAT5/FC
 - hardware: VDPLAT5/H
 - rigging module: VDPLAT5/RM
 - spare LED strip (71cm in-between 2 screws): VDPLAT5/SP1
 - spare LED strip (55cm in-between 2 screws): VDPLAT5/SP1-2

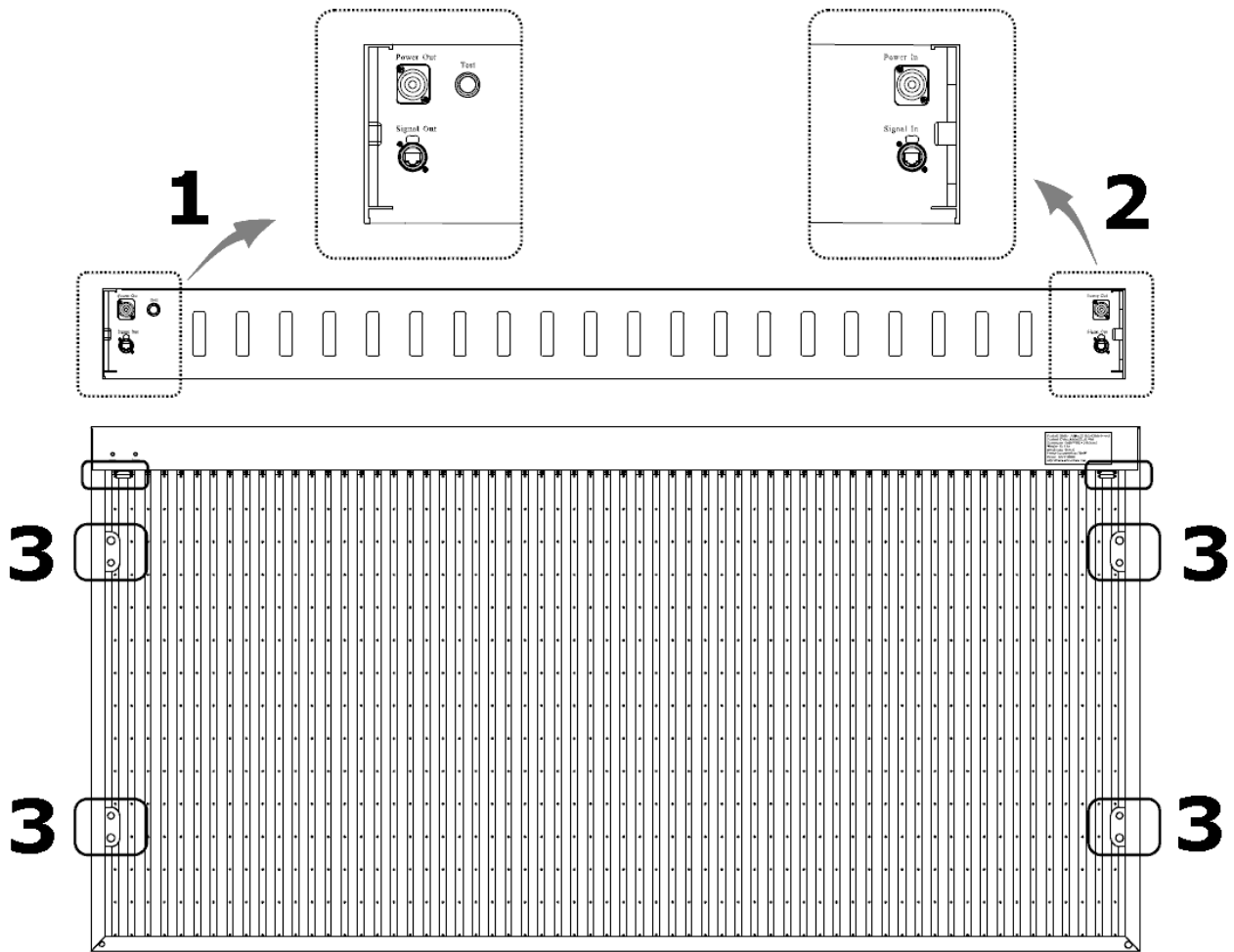
5. Hardware installation



1	VDPLAT5	2	Power cable (0.4m, max. 16A)
----------	---------	----------	------------------------------

VDPLAT5

3	Signal cable (0,4m, Ethernet)	3	Rigging coupling
----------	-------------------------------	----------	------------------



1	Power/signal OUTPUT (and test button)	2	Power/signal INPUT	3	Rigging plate
----------	--	----------	--------------------	----------	---------------

a) Overhead mounting



Risk of injury. Overhead mounting requires extensive experience: calculating workload limits, determining the installation material to be used... Have the material and the device itself checked regularly. Do not attempt to install the device yourself if you lack these qualifications as improper installation may result in injuries.

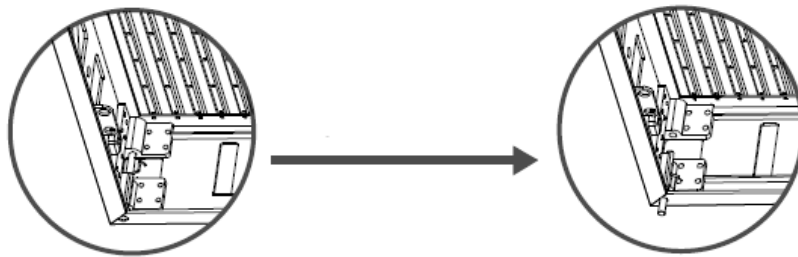
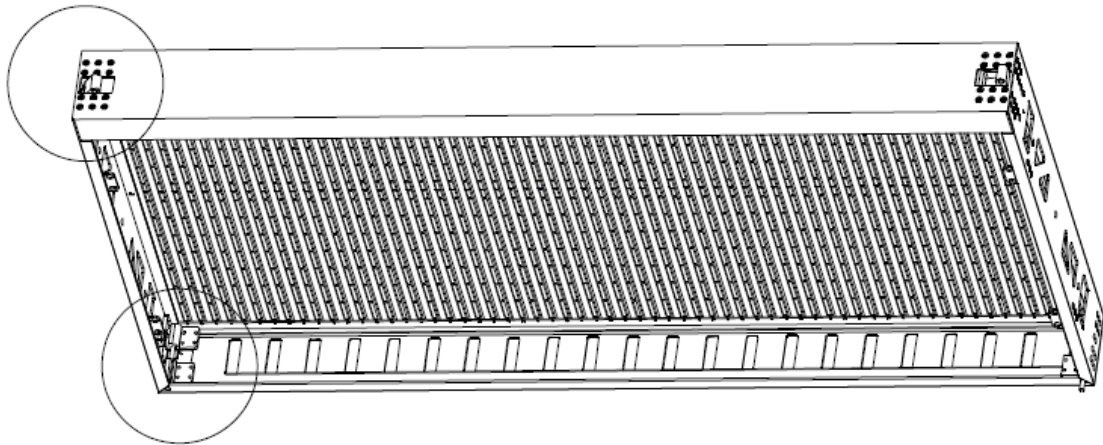
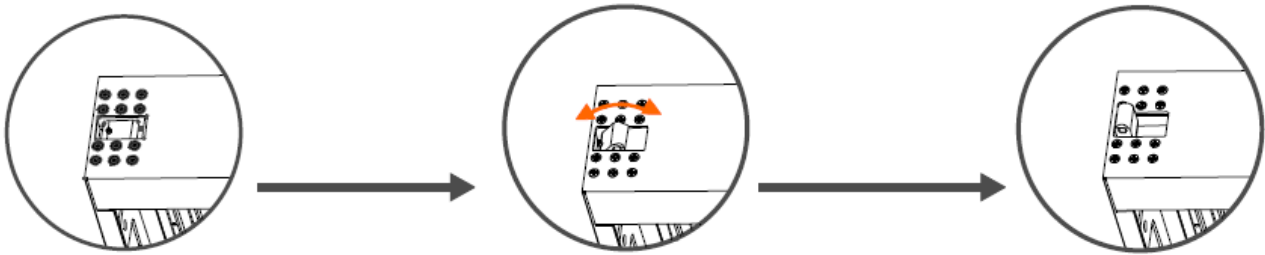
- Have the device installed by a qualified person, respecting EN 60598-2-17 and all other applicable norms.
- The construction to which the device is attached should be able to support 10 times the weight of the device for one hour without deformation.
- The installation must always be secured with a secondary attachment e.g. a safety cable.
- Never stand directly below the device when it is being mounted, removed or serviced. Have a qualified technician check the device once a year and once before you bring it into service.
- Install the device in a location with few passers-by and inaccessible to unauthorised persons.
- For truss-mounting, use an appropriate clamp (not incl.) and fit an M10 bolt through the centre of the (folded) bracket.
- Adjust the desired inclination angle via the mounting bracket and tighten the bracket screws.

b) general

- Make sure there is no flammable material within a 50cm radius of the device and there is sufficient cooling.
- Have a qualified electrician carry out the electrical connection.
- Connect the device to the mains with the power plug. All fixtures must be powered directly off a grounded switched circuit and cannot be run off a rheostat or dimmer circuit, even if the rheostat or dimmer channel is used solely for 0% to 100% switch.
- The installation has to be approved by an expert before the device is taken into service.

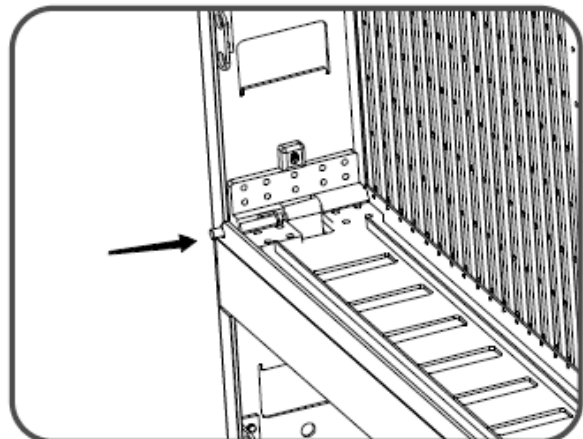
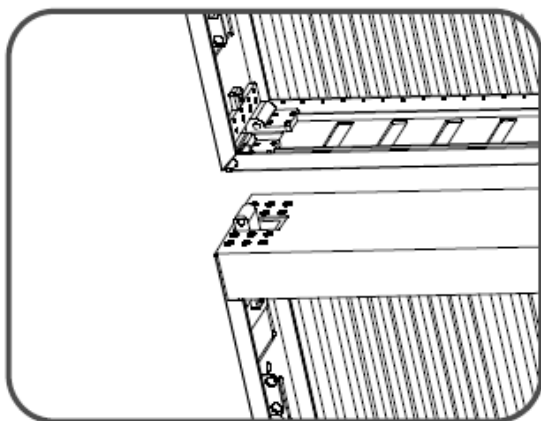
Rigging hook / bracket

- There are rigging hooks on top of the VDPLAT5, one on either side to facilitate rigging and combining multiple **VDPLAT5**'s together.
- On both bottom corners brackets are provided for the same purpose.



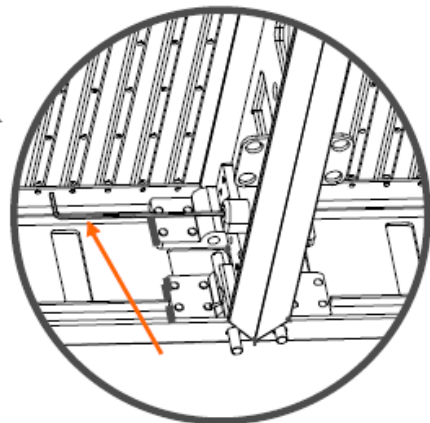
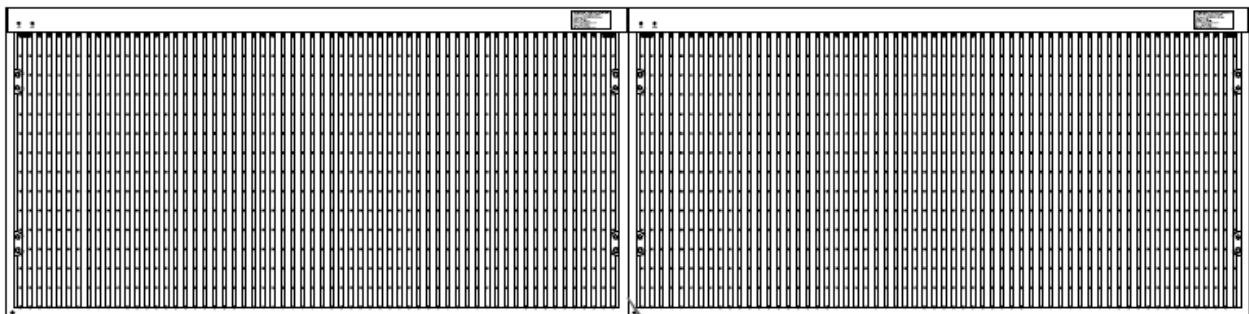
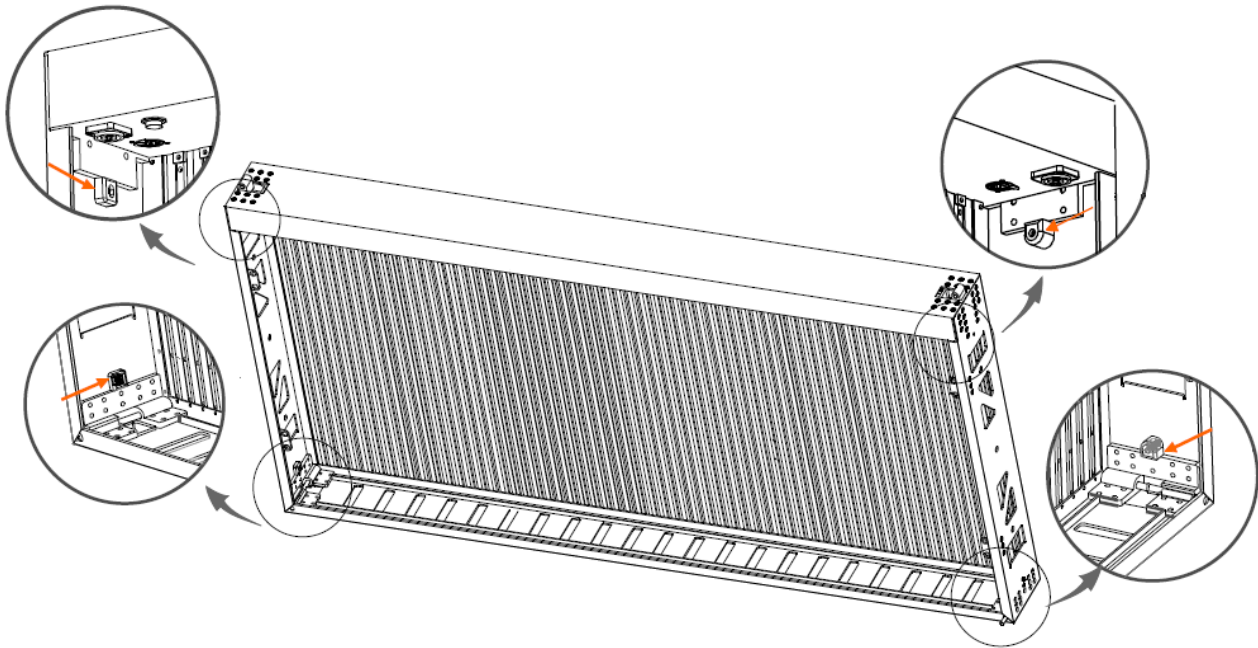
Vertical connection

- Extend the rigging hooks of the **VDPLAT5**.
- Remove the pins from the brackets and place another **VDPLAT5** on top.
- Re-insert the pins in the brackets.



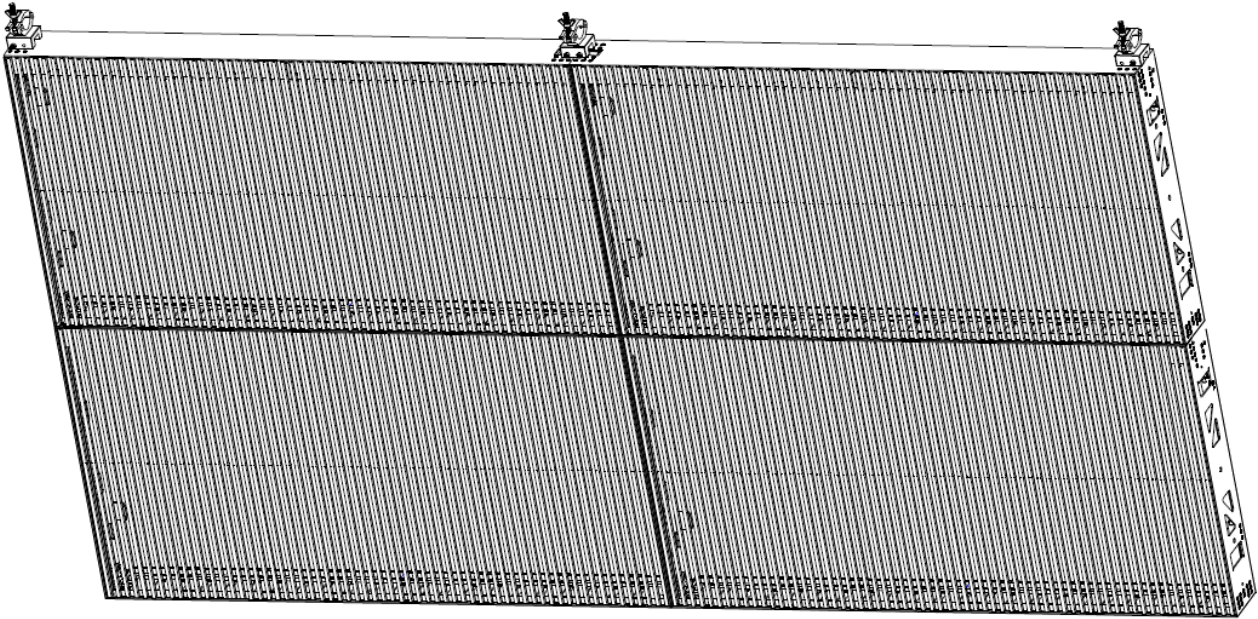
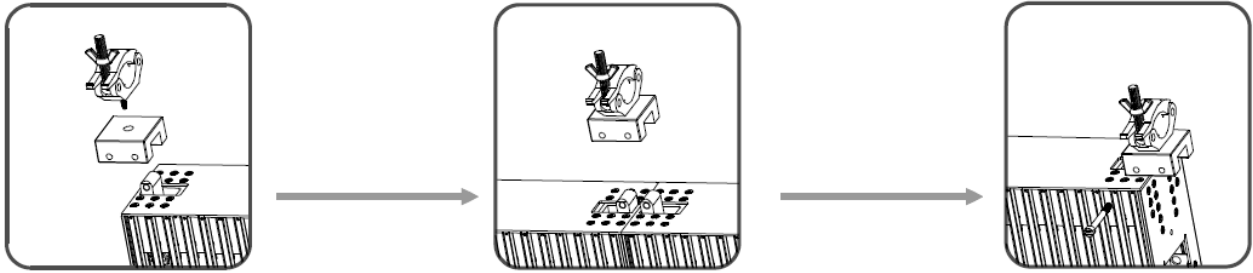
Horizontal connection

- On the left of each frame of the **VDPLAT5** there are 2 nuts; on the right there are two Allen screws.
- Place two **VDPLAT**'s side by side and turn the Allen screws to connect them together.



Rigging coupling

- Fix the clamp (not incl.) on the rigging coupling first.
- Use the bolt to fix the rigging coupling to the rigging hooks of the **VDPLAT5**.



Connections

ATTENTION: do not connect more than 4 panels to a single power input; do not connect more than 20 panels via a single signal cable.

RJ45 connector:

	T568A	T568B
1	White/green	White/orange
2	Green	Orange
3	White/orange	White/green
4	Blue	Blue
5	White/blue	White/blue
6	Orange	Green
7	White/brown	White/brown
8	Brown	Brown

It is recommended to use the T568B configuration.
Use a straight cable to link VDPLAT5's together and to a PC..

6. Software installation

1. Click "LEDStudio937" on the desktop



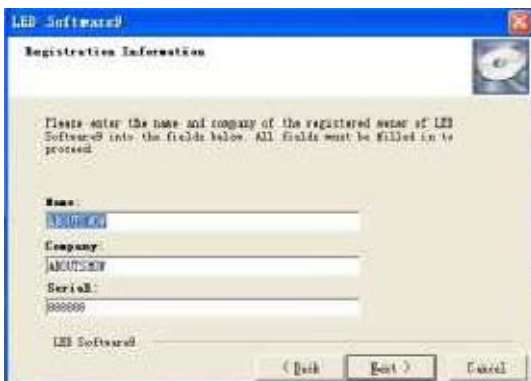
2. Select language and click OK.



3. Click next



4. Fill out the registration information



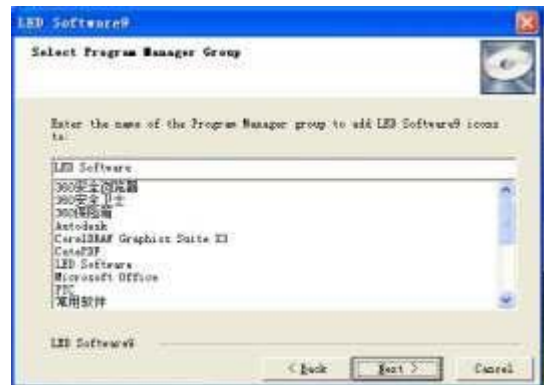
5. Confirm and click next.



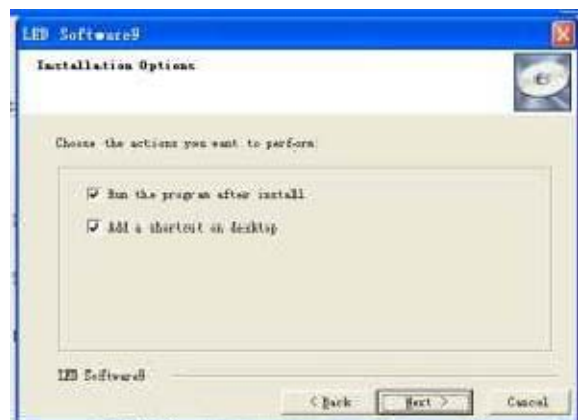
6. Choose destination directory.



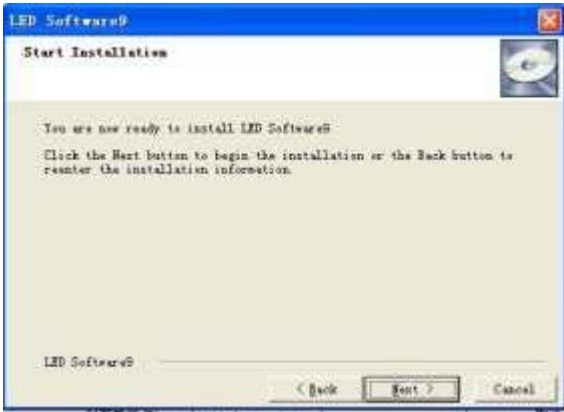
7. Select program manager group



8. Choose installation options.



9. Click next to start installation



11. Click finish to exit installation.



10. Installation in progress:

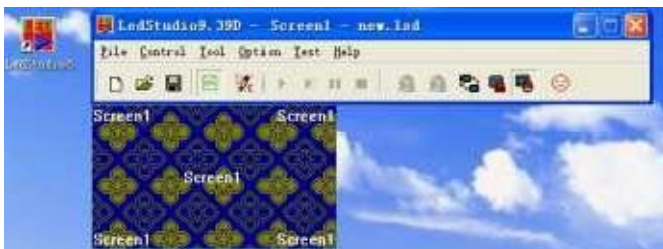


12. Locate the LedStudio8 icon on the desktop.



7. Software setup

1. Click the LedStudio icon on the desktop and enter the operation interface.



2. Click Software setup.



3. Following dialog box opens:



4. Enter **linsn** followed by the password **168**.
The dialog box opens:



2. Locate 'ALPHA.RCG' and click on 'open'.



3. Click on 'send to receiver'.

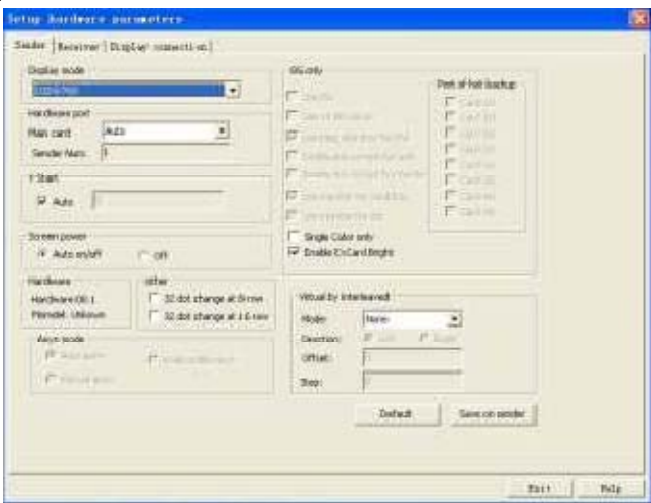


Setup hardware parameters

Sender:

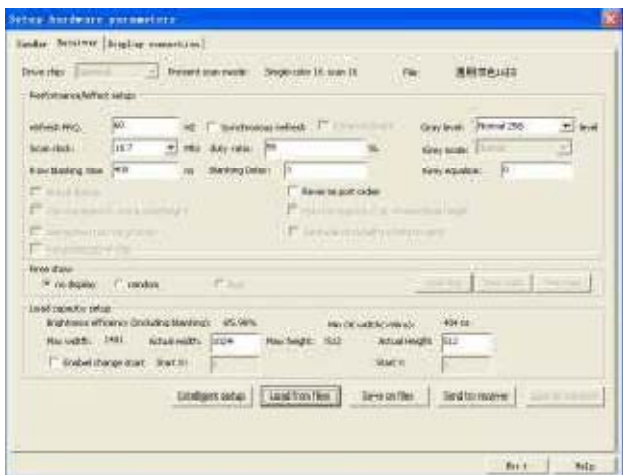
set the display mode to the desired resolution (default and recommended is 1024x768) and click on 'save on sender'.

Note: when the LEDs suddenly dim, click 'default' and 'save on sender' to solve the problem.



Receiver:

1. Click the receiver tab to open the dialog box and click 'load from files'.



4. Click 'OK'.



5. Click to save the data on the receiving card. If not, data is lost when power is removed.



6. Check all settings and click on 'save on receiver'.



7. Click 'OK'.



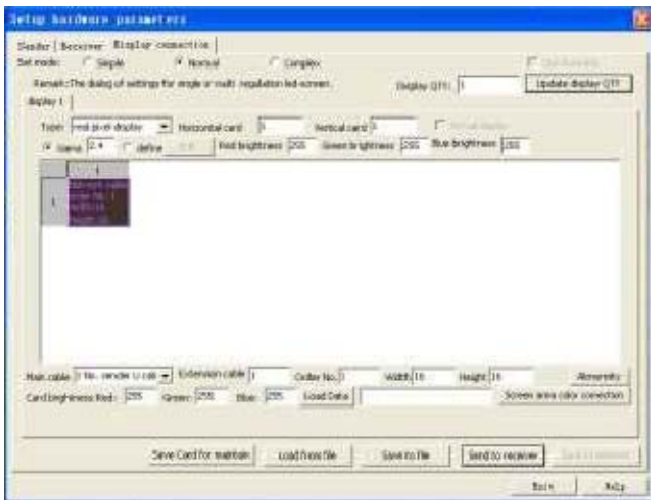
8. Make sure all parameters are correct and click 'Yes'.



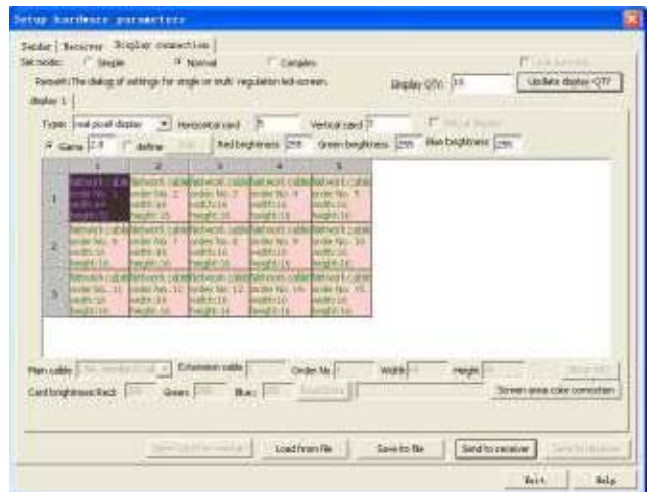
Display connection

Open the tab 'Display connection' to enter the setup interface.

1. input number of displays,
2. Click 'update display QTY'
3. Setup the screen type, e.g. full colour, double colour...
4. Input the number of cards, X (horizontal cards), Y (vertical cards). The connection scheme is shown on the screen.



5. Click 'Gama' and enter 2.8.
6. Setup Red – Green – Blue brightness (recommended value: 255).
7. Click on the top left module



8. Main cable: max. 4 sending cards can be cascaded; each sending card has 2 signal output ports, so 8 options are available.
 9. Extension cable: Ethernet cable core 1-8 (signal out). If multiple cables are used, the second cable starts with signal output port 9, the third cable with 17 and so on.
 10. Width and height are those of the panel.
 11. Order No.: signal cable number that is connected to the panel.
- Example:

- Main cable: No. 1
- Extension cable: 1
- Order No.: 1
- Width: 64
- Height: 32



12. Click 'save to receiver'.



Check whether the screen works correctly and click 'Yes'.



Following screen is shown:

8. Troubleshooting

Problem		
	Possible cause	Possible solution
All LED panels are not working		
	No video input No signal	If red indicator LED on the CNT is off, check power input. If green LED on CNT is not flashing, check DVI input. If DVI input is OK, the problem is located in the main power or processor board of the CNT.
	No power No signal Fault on LED panel	If green LED on CNT flashes, check Ethernet connection (cable not broken, length within limits). Check red LED on hub or first LED panel connected to the CNT. If this is off than a power supply problem is present. If the green LED on the LED panel is not flashing, a problem could be in the Ethernet cable, power supply or processor board of the panel. Replace the suspected with a good one. If problem is solved, the suspected panel is broken. Contact your local dealer.
All LED are flashing		
	Connection or signal problem	Check Ethernet cables and connections. Check power supply.
	Defective receiving card	The green LEDs on the LED panels and CNT must flicker regularly. If not, check the CNT for defects: check DVI input, power supply and processor board. Replace the suspected panel with a good one. If problem is solved, the suspected panel is broken. Contact your local dealer.

9. Cleaning and maintenance

- This unit does not need regular maintenance.
- All screws should be tight and free of corrosion.
- The housing, the lenses, the mounting supports and the installation location (e.g. ceiling, suspension, trussing) should not be deformed, modified or tampered with e.g. do not drill extra holes in mounting supports, do not change the location of the connections ...
- Mechanically moving parts must not show any signs of wear and tear.
- The electric power supply cables must not show any damage. Have a qualified technician maintain the device.
- Regularly remove dust from the housing and the air vents using a slightly damp cloth.
- There are no user-serviceable parts inside. Refer to an authorized dealer for service and/or spare parts.

10. Technical Specifications

power supply		230VAC/50Hz
power consumption	average	500W
	peak	700W
pixel configuration		1x RGB full-colour SMD LED
pixels/unit		32 x 46
pixel pitch		25mm
pixel density		1600 pixels/m ²
luminance		2000 cd/m ²
scanning mode		static
frame change		60 frames/sec
control distance		< 100m (no delay)
control mode		in step with computer monitor
display mode		1024x768 or 800x600
viewing distance		30 ~ 100m
viewing angle		120° (horizontal/vertical)
greyscale		256 levels
display colours		16777216
colour temperature		6500 ~ 9500K
blind pixel rate		0.0002
IP rate		IP52
dimensions		1600 x 800 x 140mm
weight		21.5kg

Use this device with original accessories only. Velleman nv cannot be held responsible in the event of damage or injury resulted from (incorrect) use of this device.

For more info concerning this product and the latest version of this manual, please visit our website www.hgpower.eu.

The information in this manual is subject to change without prior notice.

© COPYRIGHT NOTICE

The copyright to this manual is owned by Velleman nv. All worldwide rights reserved.

No part of this manual or may be copied, reproduced, translated or reduced to any electronic medium or otherwise without the prior written consent of the copyright holder.

Velleman® Service and Quality Warranty

Velleman® has over 35 years of experience in the electronics world and distributes its products in more than 85 countries.

All our products fulfil strict quality requirements and legal stipulations in the EU. In order to ensure the quality, our products regularly go through an extra quality check, both by an internal quality department and by specialized external organisations. If, all precautionary measures notwithstanding, problems should occur, please make appeal to our warranty (see guarantee conditions).

General Warranty Conditions Concerning Consumer Products (for EU):

- All consumer products are subject to a 24-month warranty on production flaws and defective material as from the original date of purchase.
- Velleman® can decide to replace an article with an equivalent article, or to refund the retail value totally or partially when the complaint is valid and a free repair or replacement of the article is impossible, or if the expenses are out of proportion.

You will be delivered a replacing article or a refund at the value of 100% of the purchase price in case of a flaw occurred in the first year after the date of purchase and delivery, or a replacing article at 50% of the purchase price or a refund at the value of 50% of the retail value in case of a flaw occurred in the second year after the date of purchase and delivery.

• Not covered by warranty:

- all direct or indirect damage caused after delivery to the article (e.g. by oxidation, shocks, falls, dust, dirt, humidity...), and by the article, as well as its contents (e.g. data loss), compensation for loss of profits;
- frequently replaced consumable goods, parts or accessories such as batteries, lamps, rubber parts, drive belts... (unlimited list);
- flaws resulting from fire, water damage, lightning, accident, natural disaster, etc. ...;
- flaws caused deliberately, negligently or resulting from improper handling, negligent maintenance, abusive use or use contrary to the manufacturer's instructions;
- damage caused by a commercial, professional or collective use of the article (the warranty validity will be reduced to six (6) months when the article is used professionally);
- damage resulting from an inappropriate packing and shipping of the article;
- all damage caused by modification, repair or alteration performed by a third party without written permission by Velleman®.
- Articles to be repaired must be delivered to your Velleman® dealer, solidly packed (preferably in the original packaging), and be completed with the original receipt of purchase and a clear flaw description.
- Hint: In order to save on cost and time, please reread the manual and check if the flaw is caused by obvious causes prior to presenting the article for repair. Note that returning a non-defective article can also involve handling costs.
- Repairs occurring after warranty expiration are subject to shipping costs.
- The above conditions are without prejudice to all commercial warranties.

The above enumeration is subject to modification according to the article (see article's manual).