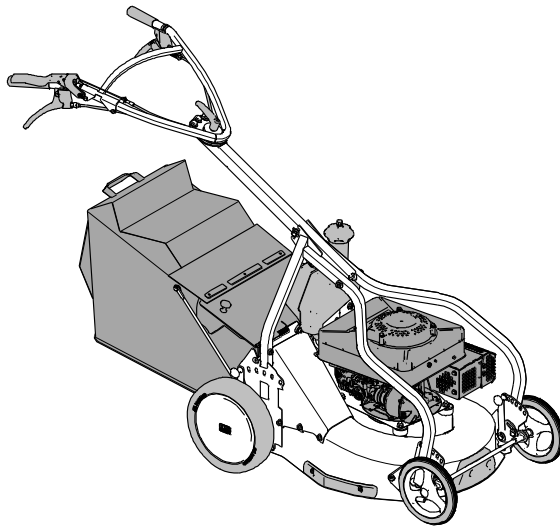




# Operating Instructions



Lawnmower

AS 531 2T MK B

From serial number: 026313100001  
Issued: 18. February 2015, V3.0  
EN-Translation of the Original Operating Instructions

## Preface

Please fill in all data referring to your device.  
When ordering spare parts, provide your dealer with the device and engine number.

Serial number:

Please adhere the sticker from the warranty card here.

Engine number:

Date of purchase:

Address of dealer:

### Dear customer:

Congratulations on your purchase. You have acquired a reliable quality product by "AS-Motor Germany".

This product has been manufactured according to modern manufacturing methods and comprehensive quality assurance measures. Only when you are satisfied with your device, we have attained our goal.

Read these operating instructions carefully and attentively so that your device operates smoothly and you and others are safe from any hazards. If you have questions concerning your device, please contact your dealer or call our customer service (telephone +49/(0)7973/9123-0). For international AS partners, please see: [www.as-motor.de/worldwide](http://www.as-motor.de/worldwide).

"AS-Motor Germany" wishes you much joy with your new device.

## Intended use

The device is exclusively intended for mowing well maintained grassed lawn areas.

Only use attachments and cutting tools authorised by "AS-Motor Germany".

Any use exceeding this purpose is inadmissible. The manufacturer is not responsible for any damage resulting from this. Observe the required maintenance and repair measures.

The user of the device is responsible for accidents or damage to other persons or their property!

The device **must not** be used:

- To cut hard objects, rocks, rubble, or pieces of wood.
- To trim bushes, hedges, and shrubbery.
- To cut plants in flower pots or planters or on rooftops.
- To clean (vacuum) footpaths.
- As shredder for shredding tree and hedge cuttings.
- As drive unit for work tools and any type of tool sets that are not authorised by "AS-Motor Germany".

# Contents

<b>Preface</b> .....	2	<b>Emptying the grass collection bag</b> .....	17
<b>Intended use</b> .....	2	<b>Switching off and parking</b> .....	18
<b>Explanation of the symbols</b> .....	4	<b>Maintenance and cleaning</b> .....	19
Symbols in the instructions .....	4	Preparations .....	20
Symbols on the device .....	4	Cleaning the device .....	20
<b>Safety instructions</b> .....	6	General inspection .....	20
Get informed! .....	6	Maintaining the engine .....	21
User restrictions and hours of operation .....	6	Checking the spark plugs .....	21
Safe handling of fuel .....	6	Maintaining the air filter .....	21
Check the device prior to use .....	7	Checking the drive .....	21
Use caution during operation .....	7	Checking the parking brake .....	22
Prior to mowing .....	7	Checking the blade .....	22
Use caution when mowing .....	7	<b>Storage</b> .....	23
When work is completed .....	9	Storing the device .....	23
Use caution during maintenance and repair .....	9	Longer storage .....	23
<b>Device description</b> .....	10	Restarting .....	23
<b>Control elements</b> .....	11	<b>Spare parts</b> .....	23
<b>Assembly</b> .....	12	<b>Wear parts</b> .....	23
Scope of delivery .....	12	<b>Disposal</b> .....	23
Unpacking .....	12	<b>Warranty</b> .....	24
Mounting guide bar and handlebar .....	12	<b>Possible faults</b> .....	25
Assembling the grass collection bag .....	13	<b>Accessories</b> .....	27
Mounting the grass collection bag .....	13	<b>Mixing ratios fuel</b> .....	27
<b>Transport</b> .....	14	<b>Technical data</b> .....	28
<b>Information on mowing</b> .....	14	<b>Declaration of conformity</b> .....	29
<b>Prior to starting</b> .....	15		
Fuel .....	15		
Tanking up .....	15		
Adjusting the cutting height .....	15		
<b>Starting</b> .....	16		
Starting device .....	16		
<b>Driving and engaging the blade</b> .....	16		
Driving with the blade .....	16		
Driving without the blade .....	17		
Drive on .....	17		
Drive off: .....	17		
Pushing .....	17		
Driving down slope .....	17		
Adjusting speed .....	17		
Turning .....	17		

# Explanation of the symbols

## Symbols in the instructions

In these operating instructions, the following symbols are used to denote special dangers.



Warning.  
These symbols denote special dangers.



Prohibition sign.  
These symbols denote inadmissible procedures.



Directive sign.  
These symbols denote required protective measures.

## Symbols on the device

The following symbols are placed on the device to inform you must be careful and attentive when using the device:



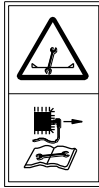
Working with the device requires extreme cautiousness.  
Read the operating instructions before you use the device.



Risk of injury!  
Make sure that no one is within the danger zone of the device.  
Objects may be ejected.



The quickly rotating blade can cause life threatening injuries or immense property damage! Be especially careful to keep your hands and feet away from the blade when the device is put into operation.



Prior to any repair and maintenance work, pull off the spark plug connector.



Clean the ventilation grid!  
The cooling air of the motor is sucked in through the ventilation grid of the engine cover. Always keep the entire surface open and free!



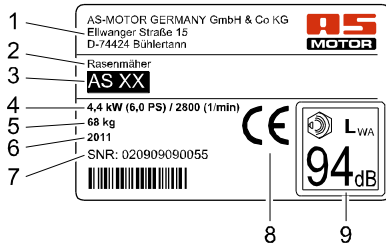
Noise is causing health problems. Use personal ear protection to avoid hearing damage.



Hot surface. Do not touch the engine or the silencer. They become very hot during operation and you can get burned.

## Type plate

The type plate on the device provides you with information on the device type and the technical data.



- 1 Name and address of the manufacturer
- 2 Device designation
- 3 Type designation
- 4 Rated power output in kW / engine speed
- 5 Weight
- 6 Year of manufacture
- 7 Serial number
- 8 CE marking
- 9 Sound level L<sub>WA</sub>

## Safety instructions

### Get informed!

For your safety, read these operating instructions with care. Familiarize yourself with the control elements and the proper use of the device. Share these operating instructions with other users of the device.

Before you use the device for the first time, let the dealer instruct you regarding safe use.

Get familiar with the device in a wide, open and flat terrain first.

### User restrictions and hours of operation

Never allow children or persons who are not familiar with the operating instructions to use the device. Persons under 18 years of age may operate the device only under proper supervision. Local regulations determine the minimum age of the operator and the operating times.

Unsuitable for operation of the device are persons who

- are under the influence of alcohol, drugs or reaction retarding medicines.
- have physical and mental/emotional impairments.
- are tired or sick.



People fitted with pace makers are not allowed to touch any current carrying parts of the ignition system.

## Safe handling of fuel



### Danger!

Fuel is toxic and highly inflammable.



Danger of fire and explosion!

Keep the fuel away from ignition sources and do not smoke while handling the device.

Do not inhale fuel vapours; they are dangerous to your health.



Use gloves and avoid skin contact with the fuel.

Fuel up outdoors only when the engine is cool and not running. Use a filler or funnel.

Do not spill any fuel and do not let the fuel get into the canalisation or ground water.

If you spilled fuel, do not start the device until the fuel vapours have evaporated (wipe dry). Move the device away from the area where the fuel was spilled.

Always close the tank cap securely and do not open it while the engine is running or the device is still hot.

Drain the fuel tank only when outdoors. Use a suitable container or run the tank empty.

Keep the fuel away from children and store it in a suitable container in a dark, cool, and dry location.

Never park the device with fuel in the tank inside a building where fuel vapours could come in contact with open fire or sparks.

Immediately replace a damaged fuel tank or tank cap (authorised dealership).

### First aid

When swallowing fuel or inhaling fuel vapours, do not force vomiting and immediately consult a doctor.

In case of skin contact, immediately wash with water and soap. Change your soiled clothing as soon as you can.

### Measures in case of a fire

In case of a fire, use foam, dry powder extinguisher, or carbon dioxide (CO<sub>2</sub>). Never douse with water!

## Check the device prior to use

---

Prior to use, check the knife, drive and fastening parts for proper working condition and firm seating by visual inspection.

Never use the device with defective or missing covers, impact protection flap or grass collection bag.

Do not remove, change or override any safety devices or control elements.

Observe the maintenance instructions and replace damaged or worn parts immediately.

Have an authorised service centre check your device if the blade does not stop within 3 seconds.

## Use caution during operation

---

Do not start the engine

- if fuel was spilled.
- in closed or poorly ventilated rooms (danger of poisoning!).
- if there are other persons nearby.

Only start the device when your feet are at a safe distance to the blade.

During startup of the engine, do not tilt the device.

Do not touch the engine or the silencer. They become very hot during operation and you can get burned. Resulting unintentional movements constitute an additional injury hazard.

Switch off the blade and wait until the blade comes to a standstill

- before you open the impact protection flap or remove the grass collection bag.
- before you move over surfaces other than grass.

Switch off the engine and wait until the blade comes to a standstill

- before you tilt or transport the device.
- if you step away from the device, even for just a short time.
- before you adjust the cutting height.
- before you refuel.

Switch off the engine and wait until the blade comes to a standstill, and pull off the spark plug connector

- before you clean or check the device or before you carry out work on the device.
- before you unblock or unclog the discharge area.

## Prior to mowing

---

### Personal protective measures



While mowing, always wear sturdy footwear with good grip, long trousers, and gloves. Do not mow in open sandals or bare feet.



Noise is causing health problems. Use personal ear protection to avoid hearing damage. Wear safety glasses and headgear.

Ask your specialised dealer about suitable protective equipment.

### Preparing the mowing area

Prior to mowing, carefully check the perimeter of the lawn. Remove rocks, pieces of wood, bones, wires, and other objects that could be picked up and thrown out by the device.

## Use caution when mowing

---

### Risk of injury

Stay within shouting distance to other people who can help you in case of an emergency.



### **Danger!**

Risk of injury caused by thrown out objects.

Never mow while persons, children, pets, or property are in the vicinity.



The area in front of and to the right of the device is especially dangerous.

Keep your hands and feet away from the rotating parts. Keep a distance to the ejection area while working with the device.

Never open the impact protection flap and never empty the grass collection bag as long as the knife is running. The rotating knife can cause injuries and objects can be thrown out.

Only mow during daylight or with adequate artificial lighting. Never mow in the event of uncertain weather conditions and risk of lightning.

Be especially carefully when mowing on soft ground, nearby landfills, ditches and dikes.



Avoid mowing wet grass - slipping hazard!

Be extremely cautious when turning the device round or pulling it toward you and when moving in reverse.

Always walk slowly!

Never lift or carry the device when the engine is running.

When using the device over a longer period of time, vibrations can cause disturbances in the blood supply of the hands. A generally accepted usage time cannot be determined. Use gloves.

Take breaks on time.

Have an authorised service centre check the device immediately

– if the blade hit an object.

– if the device starts to vibrate unusually severely.

### **Caution when mowing slopes**



When mowing slopes, there is a risk of slipping and tilting!

– Only mow steep slopes when safe operation assured.

– Do not mow excessively steep slopes.

– When mowing steep slopes, meet the appropriate safety measures, e.g. use step irons.

– Always mow in horizontal directions, never up- or downwards.

– Sure footing is essential for your safety, always wear skid proof safety shoes.

– Be extremely careful when changing the direction.

– Only mow when the surface is dry and non-slip.

The device can roll away when you mow downhill. Put the device down on even surfaces only and prevent inadvertent rolling.

### **Mowing surfaces with fire hazard**

– Carry a sufficient amount of suitable extinguishing agent.

– If side inclination is too great, fuel may leak from the carburetor or the tank. This poses a fire hazard!

– Observe the mowed surface also after moving is completed to ensure that no fire will start.

To avoid risk of fire, keep the following components free of dirt, grass, hay, leaking oil, grease, etc.:

– Engine

– Silencer (manifold, guard, clearances)

– Area around the fuel tank



## **When work is completed**

---

After mowing, always close the fuel valve and the tank ventilation.

Prior to leaving the device, wait until the engine comes to a standstill and pull off the spark plug connector.

After switching it off, let the device cool down for at least 20 minutes before you store it in a dry, closed, sufficiently ventilated room.

Never store the device when there is fuel in the tank inside a building where fuel vapours might come into contact with open fire or sparks.

## **Use caution during maintenance and repair**

---

Only carry out maintenance work as described in these operating instructions. Have an authorised service centre carry out all other work.

Only use the knives and spare parts authorized by "AS-Motor Germany". Unauthorized knives and spare parts can cause severe injuries.

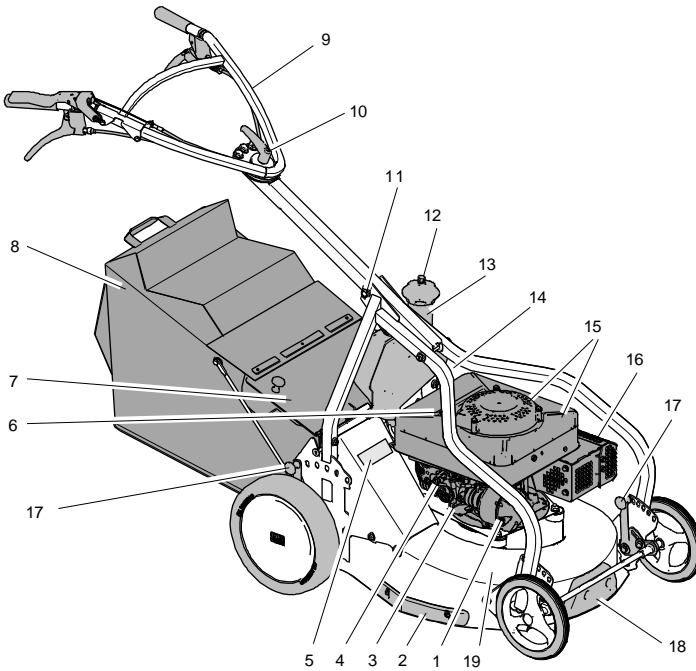
Prior to all maintenance work, wait until the engine comes to a standstill and pull off the spark plug connector.

We explicitly point out that, in accordance with the Product Liability Act, we are not liable for damages that were caused by our devices if

- worn or damaged parts were not repaired or replaced on time.
- these damages were caused by improper repair.
- when changing a part, our original parts or parts authorised by use were not used.
- the repair work was not carried out by an authorised service station.

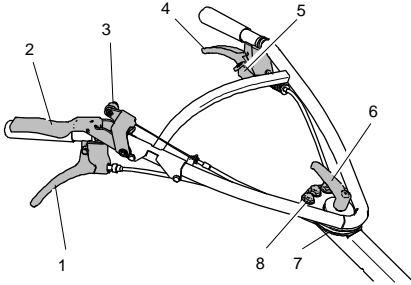
The same applies for spare parts and accessories.

## Device description



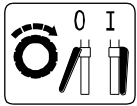
- |    |   |    |                           |
|----|---|----|---------------------------|
| 1  | Air filter                                | 17 | Cutting height adjustment |
| 2  | Abrasive strip                            | 18 | Impact protection         |
| 3  | Choke                                     | 19 | Cover                     |
| 4  | Engine stop switch                        |    |                           |
| 5  | Type plate                                |    |                           |
| 6  | Starter grip                              |    |                           |
| 7  | Impact protection flap                    |    |                           |
| 8  | Grass collection bag                      |    |                           |
| 9  | Handle bar with control elements          |    |                           |
| 10 | Lever for lateral adjustment of handlebar |    |                           |
| 11 | Height adjustment of handlebar            |    |                           |
| 12 | Tank ventilation                          |    |                           |
| 13 | Tank filler spout                         |    |                           |
| 14 | Spark plug connector                      |    |                           |
| 15 | Ventilation grid                          |    |                           |
| 16 | Silencer                                  |    |                           |

## Control elements



### Drive lever (1)

With the drive lever, you switch the drive on and off.

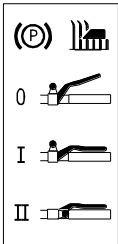


Drive on (I):  
Press the lever towards the handlebar and continue to hold.

Drive off (0):  
Release the lever.

### Blade clutch lever/parking brake (2)

The blade clutch lever/parking brake is a protective device. When you release the lever, the blade comes to a standstill within 3 seconds. Simultaneously the parking brake is applied.



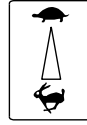
Activate the parking brake.  
Disengaging blade (0):  
Release the blade clutch lever.

Release the parking brake, blade disengaged (I):  
Press the blade clutch lever without latch knob (3) towards the handlebar.

Release the parking brake, Engaging blade (II):  
Lift the blade clutch lever, engage latch knob (3) and press blade clutch lever towards the handlebar.

### Varioshift lever (4)

With the varioshift lever, you can continuously adjust the speed of the device while the engine is running.



Slower:  
Press the lever towards the handlebar.

Faster:  
Release the lever.

### Locking min. speed:

1. Press the varioshift towards the handlebar until it engages.

### Releasing min. lock:

1. Press your thumb against the red release lever (5) and release the varioshift lever until you have reached the desired speed.

### Setting max. speed:

1. If necessary, release the min. lock.
2. Release the varioshift lever.

### Lateral adjustment handlebar(6)

The handlebar can be fixed in 3 positions.

1. Release the clamping lever (6) with one anti-clockwise rotation.
2. Lift the handlebar.
3. Beware: Do not squeeze the Bowden cables when swivelling the handlebar. Swivel the handlebar to the side to the desired position. Insert one of the three screws (8) into the bore hole at the handlebar.
4. Beware: If a clamping lever is loose, the clamping bolt of the handlebar can fail. Tighten the clamping lever by turning clockwise.

### Changing the neutral position of the clamping lever

1. Lift the clamping lever (6) and turn it to the desired position.

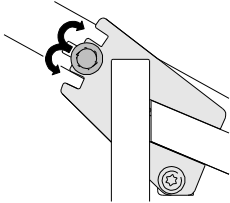
## Vibration Protect dampening (7)



To reduce vibration, the support of the lever is flexibly mounted.

## Lever height adjustment

Set the height of the lever by setting the screw for the lever height adjustment. 3 positions are available.



## Engine stop switch (13)

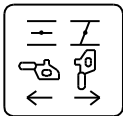
Switch the ignition on and off with the engine stop switch. When you switch off the ignition, the engine is switched off.



0: OFF  
I: ON

## Carburetor with choke and tickler

The choke (1) and the tickler (2) are required for the cold engine start.



### Opening the choke:

Turn clockwise to the stop.

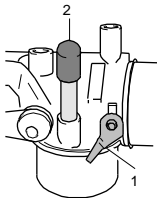
### Closing the choke:

Turn anti-clockwise to the stop.

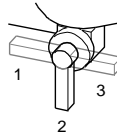
### Filling carburetor with

#### fuel:

Press the tickler briefly until the fuel flow starts.



## Fuel valve



1: Reserve  
2: Open  
3: Closed

## Assembly

### Scope of delivery

The device is delivered in a carton.

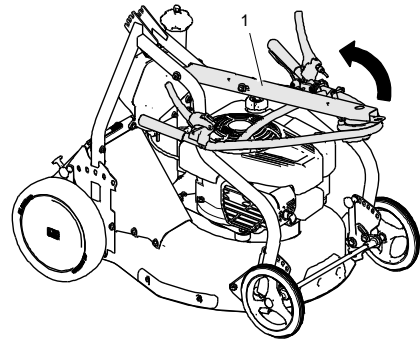
The scope of delivery includes:

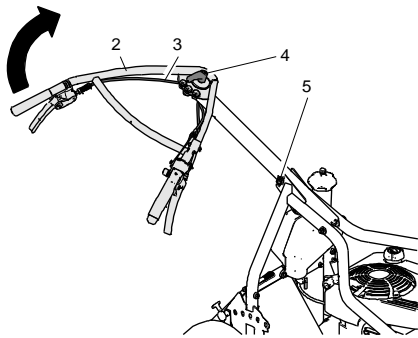
- The device.
- These operating instructions.
- Warranty card.
- Grass collection bag.
- Tool bag with small items.

### Unpacking

1. Remove the loose parts from the box.
2. Cut open the front side of the box.
3. Push the device out of the box

### Mounting guide bar and handlebar

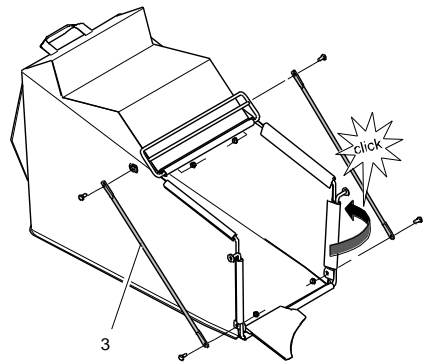
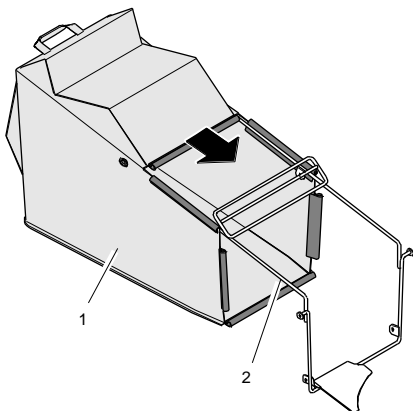




1. Move the guide bar (1) backwards.
2. Engage the screw (5) at the guide bar into one of the notches and tighten the nut (see Lever for height adjustment).
3. Attention: Do not crush the Bowden cables (3) when moving the handlebar. Swivel the handlebar (2) clockwise towards the rear and tighten the clamping lever (4).

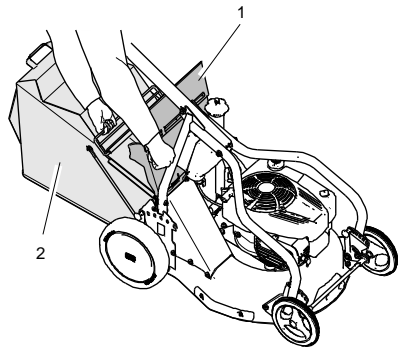
You can switch the position of the control lever at the handlebar (left/right). Please contact an authorised service centre.

## Assembling the grass collection bag



1. Pull the grass collection bag (1) over the frame (2).
2. Fasten the grass collection bag with the plastic profiles to the frame.
3. On both sides of the grass collection bag: Screw the rod (3) through the eyelets of the grass collection bag to the frame (4 x screw and nut M6).

## Mounting the grass collection bag



1. Switch off the blade and wait until the blade comes to a standstill.
2. Lift the impact protection flap (1).
3. Insert the grass collection bag (2) into the recesses.
4. Lower the impact protection flap onto the grass collection bag.

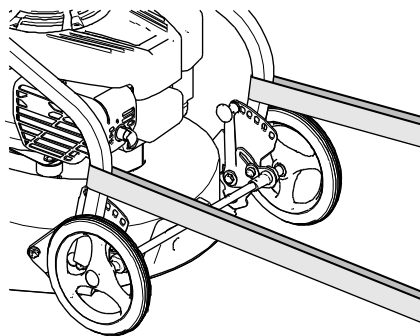
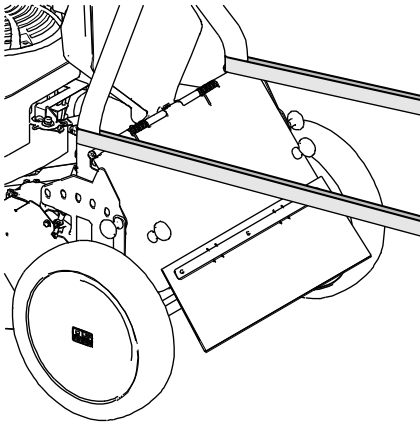
## Transport

Switch off the engine and wait until the blade comes to a standstill before you lift the device. Two people should lift the device.

Switch off the device before every transport and let it cool down for at least 20 minutes. Close the tank ventilation and the fuel valve.

For transport, you can fold up the handlebar and the guide bar.

When transporting by vehicle, secure the device against rolling, sliding, tilting, and fuel and oil leakage.



Use tension belts to secure the device.

**Beware:** To avoid damage to the device, fasten the tension belts exclusively as shown in the illustration. Do not overtighten the tension belts.

## Information on mowing

Prior to mowing, check your device for completeness, proper functioning, and cleanliness. A dirty ventilation grid causes overheating of the engine, this can damage the engine. A dirty protective grid at the silencer poses a fire hazard.

Frequent engagement and disengagement of the clutch increases wear of the blade drive belt and the blade brake. Especially in case of high grass, clutch engagement leads to overload.

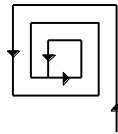
To keep the area well maintained, mow frequently and keep the grass short. Do not mow your lawn too low in dry and hot conditions because the lawn is susceptible to sun and heat damage and will look unsightly!

Only mow with a sharp and undamaged blade. Have the blade sharpened and balanced regularly (by authorised service centre).

Do not mow when the grass is wet or when it is raining. The turf may be damaged and there is a danger of slipping!

Turn the device around only in already mown sections. Do not leave the device unattended while the engine is running

For mowing, always turn the accelerator lever to full throttle to achieve the best mowing performance.



To collect the grass without blockage, we recommend, for flat terrain, to proceed according to the mowing patterns.

If the grass is extremely high, mow twice at different cutting height settings.

## Prior to starting

### Fuel

---

The engine must be run on a mixture of petrol and two-stroke oil.

For possible mixing ratios, see chapter Mixing ratios fuel.

Use unleaded petrol (octane rating at least ROZ 91). You can use E10 petrol. Do not store E10 petrol longer than 30 days.

Always use synthetic or, even better, fully synthetic two-stroke oil. Mineral two-stroke oil is not recommended.

#### AS-Motor recommendation:

Fully synthetic two-stroke oil **TITAN 2T 100S** in ratio **1:100**.

Your benefits:

- **Halve oil consumption compared to 1:50** – therefore more environmentally and cost friendly.
- Optimum protection of the engine for a long service life.
- Low engine wear.
- Maximum engine performance.

You can buy Fuchs “**TITAN 2T 100S**” from your AS-dealer:

Container	ET no.
1 litres (resealable bottle)	E06830 G00041042
100 ml (disposable container)	E10286 G00041056
40 * 100 ml (disposable containers in box)	E10561 G00041058

**Notice:** You can find on the market ready mixed two-stroke fuels. Based on our experience, the ready mixed fuels “STIHL Motomix 1:50” and “ASPEN 2-stroke” can be used. No guarantee can be given for operation of the device with other fuels and oils!

Do not use mixtures with more oil than 1:50 (e.g. 1:35).

Too much oil results in carbon deposits and reduces the service life of the engine.

Only use the synthetic two-stroke oils explicitly intended for mixing.

Use of engine oils or even waste oil results in engine damage.

No warranty is given in these cases.

#### Storing fuel mixture

The fuel mixture ages and can cause engine damages. Only mix as much fuel as you are going to use up during the next mowing.

### Tanking up

---



#### Danger!

Fuel is ignited by hot engine parts.

Prior to filling up, switch off the engine and wait for at least 20 minutes until the engine has cooled down. Observe the safety instructions regarding the fuel!

#### Filling in the fuel:

1. For filling, use a canister with a filler spout or use as funnel.
2. Open the canister carefully so that the existing overpressure is discharged slowly and no fuel spurts out.
3. Open the tank cap carefully so that the existing overpressure is discharged slowly and no fuel spurts out.
4. Fill the fuel tank.
5. Screw the tank cap on tightly.

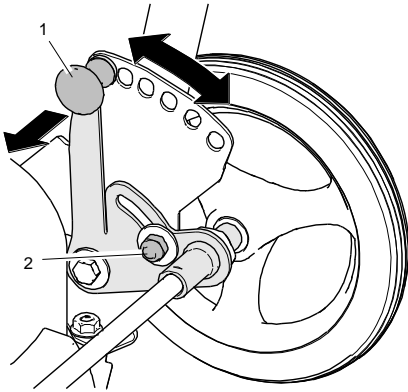
### Adjusting the cutting height

---

Adjust the cutting height setting only when the engine is switched off.

Set the cutting height so that the blade does not touch the ground even in case of terrain unevenness. If the cutting height is set too high, objects can be ejected and the “clean cut appearance” can be destroyed.

The cutting height can be adjusted in 1 cm increments from 3 cm to 8 cm.



1. Switch off the engine and wait until the blade has come to a standstill.
2. With the adjusting lever (1) adjust each wheel to the same cutting height. While doing so, adjust wheel after wheel only by one position at a time.

### Setting the cutting height

Under high load, adjust the cutting height by tightening the screw (2).

## Starting



### Danger!

During startup, there is a risk of injury caused by the rotating blade.

Make sure that no one is within the danger zone of the blade. Do not tip the device over to one side during startup.



### Danger!

If after startup the carburetor does not close properly, fuel will overflow and a fire hazard occurs.

Close the fuel valve and contact an authorised service centre.

## Starting device

1. Place the device onto a flat surface, not in high grass.

2. Open the fuel valve and the tank ventilation.
3. Plug on the spark plug connector.
4. Only for cold start: Close the choke at the carburetor (turn anti-clockwise).
5. Press the tickler at the carburetor until the fuel is seen to drip.
6. Actuate and hold the engine brake bar.
7. Pull the starter rope slowly out until you feel resistance then pull out quickly – engine starts to run.
8. Let the starter rope retract slowly.
9. Reopen the choke (turn clockwise).

## Driving and engaging the blade



### Danger!

Risk of injury caused by tripping or sliding while moving the mower backwards and turning it round.

Make sure that the area is clear of objects and watch for safe footing.



### Caution!

Driving while the parking brake is on can damage the parking brake.

Only drive when the parking brake is released.

In case of a hazardous situation, switch off the drive and declutch the blade.

When crossing over paths, declutch the blade.

## Driving with the blade

1. Lift the blade clutch lever.
2. Press the latch knob at the blade clutch lever.
3. Press blade clutch lever towards the handlebar.

⇒ Blade starts up.

⇒ Parking brake is released.



## Driving without the blade

---

1. Press blade clutch lever towards the handlebar (do not press the latch knob).  
⇒ Parking brake is released.

## Drive on

---

1. Pull the drive lever toward the handlebar – device starts moving.
2. Set the desired speed using the varioshift lever.

## Drive off:

---

1. Release the drive lever.

## Pushing

---

1. Press blade clutch lever towards the handlebar.  
⇒ Parking brake is released.  
⇒ Device can be pushed or rolls.

## Driving down slope

---

When driving down slope, continue to have the drive switched on to keep the driving speed constant.

## Adjusting speed

---

The driving speed can be continuously adjusted with the varioshift lever.

Only adjust the driving speed when the engine is running; otherwise, the vario drive can be damaged.

When approaching obstacles, you reduce the driving speed with the varioshift lever.

For longer drives, lock in the driving speed with the varioshift lever in the highest or lowest driving speed.

## Turning

---

Turn the device round only where the grass has been mowed already.

### Turning round on an even surface:

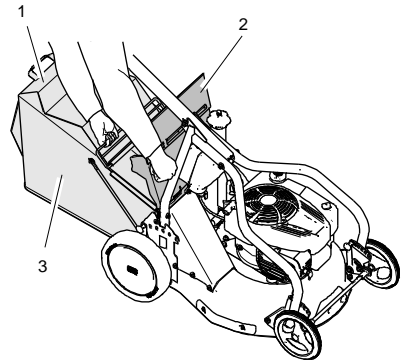
1. Switch off the drive.
2. Turn the device to the desired side.
3. Switch the drive back on.

### Turning round on a sloping area:

1. Keep the drive switched on.
2. Turn the device upslope.
3. Hold back the handlebar and the inner wheel.

The drive prevents sliding and supports the turn manoeuvre.

## Emptying the grass collection bag



Display of fill level: If the grass collection bag is full, the sewn-on material goes down (1) (dust protection).



### **Danger!**

Risk of injury caused by rotating blades.

When the engine is running, never reach into the discharge channel.

### Emptying the grass collection bag

1. Disengage the blade and wait until it comes to a standstill.
2. Lift the impact protection flap (2).
3. Remove the grass collection bag (3).
4. Lower the impact protection flap.

5. Empty the grass collection bag completely.

## Switching off and parking



### Caution!

On a slope, the device can roll away.

Put the device on even ground only or secure it against rolling away.

1. Release the drive lever.
2. Release the blade clutch lever.
3. Set the engine stop switch to "0".
4. Wait for the engine to stop completely before you step away from the device.
5. Close the fuel valve and the tank ventilation.
6. Pull off the plug connector.

## Maintenance and cleaning

Regular maintenance keeps your device ready for use.

If you do not observe the maintenance notices, faults may occur that are not covered by the

warranty. Operational safety is endangered as well.

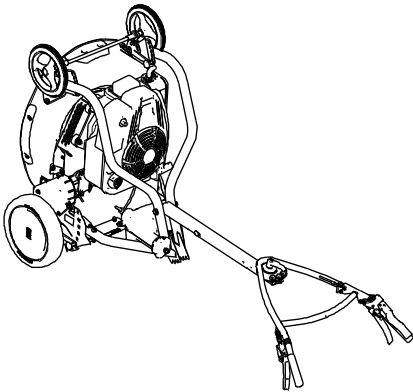
Contact your authorised service centre for checkup if you detect problems during maintenance.

Component	Action	Maintenance interval	
		A	B
Device	Check for safe working condition (basic inspection).	■	▲
	Clean.	■	
	Customer service.		▲
Fuel	Check fuel level.	■	
	Is the tank cap closed?	■	
Tank, fuel valve, and fuel line	Check parts for leaks and check for good condition.	■	▲
Carburetor	Does the carburetor close again after starting?	■	▲
Ventilation grid	Clean.	■	▲
Engine cooling	Clean.		▲
Spark plug	Check/replace.		▲
Air filter	Maintain.	■	■▲
Blade and fastening components	Check for wear and damage. See chapter Checking the blade.	■	▲
	Change.		▲
Blade brake	Does the blade function safely and does the blade come to a standstill within 3 seconds?	□	▲
Parking brake	Check.	■	▲
Drive lever	Does the device stop when the lever is in zero position?	□	▲
V-belt	Are the belts tensioned correctly, without fissures, and in good condition?		▲
Bowden cables	Check for proper function and ease of movement.	■	▲

Chassis and impact protection	Check for rust and fissures and check the welding seams.  Are all protective devices and covers in place, fastened correctly and properly functioning?	■  ■	▲  ▲
Label	Condition of the labels.	■	▲
Flammable material	Remove easily flammable debris buildup from the engine and the device.	■	▲
Tyres	Check tyres and, if necessary, the tyre pressure.	■	▲

- A Before and after each use.  
 B Annually or every 50 h.  
 ■ By the user when the engine is not running.  
 □ By the user when the engine is running.  
 ▲ By the authorised service centre.

## Preparations



### Caution!

Risk of injury.  
 Guide bar can snap back.  
 To provide secure stand, place the guide bar onto the ground.

### Prior to all maintenance and cleaning work

1. Let the device cool down for at least 20 minutes.
2. Pull off the spark plug connector.
3. Close the fuel valve and the tank ventilation.

4. Remove the clamping lever from the guide bar and flip the guide bar forward (do not crush the Bowden cables).
5. Tilt the device backwards according to the illustration.
6. Put the guide bar onto the ground.

## Cleaning the device

Depending on use, clean the device thoroughly, especially the bottom and the knife.

Grass cuttings and dirt that are stuck interfere with the grass ejection and impair the cutting quality. To sufficiently cool the engine, keep the engine cover, ventilation grid and engine clean.

**Fire hazard!** Take particular care that the components at the silencer are clean.

For cleaning, use a hand brush. Remove stubborn dirt with a wooden or plastic spatula. Clean the outside housing parts with a cloth.

Do not clean the device with water spray or high-pressure cleaner! Do not use any aggressive cleaning agents.

## General inspection

To ensure proper working order of the device, regularly check all nuts, bolts, screws, fuel line connections, air filters, etc. for firm seating.

Check the ignition cable and the spark plug connectors for damages.

Change the damaged or used parts especially covers, grass collection bag, silencer, abrasive strip, impact protection or fuel immediately (authorised service centre).

Check all parts that contain fluids for leaks and proper condition. These can be: Fuel tank, fuel valve, fuel lines, carburetor, engine, gears, battery, hydraulic system.

In case of leaks, contact an authorised service centre.

## Maintaining the engine

---



### Danger!

If the speed of rotation is set too high, objects can be ejected. The engine can be damaged and noise pollution increases.

Do not change the basic setting of the carburetor or the speed control.

To ensure a long service life of the engine, sufficient engine cooling is required.

Keep the

- engine cover (ventilation grid),
  - silencer (protective grid) and
  - cooling fins of the engine
- clean at all times.

## Checking the spark plugs

---



### Danger!

The ignition system generates an electromagnetic field.

Wearers of pacemakers must not work on live parts.

Soiled spark plugs reduce the engine output. Clean the electrode of the spark plug with a brass wire brush. Check the electrode gap (see "Technical data"). Make sure that the insulator around the electrode is not damaged. Never use a damaged spark plug.

Tighten the spark plug with the torque indicated in the technical data.

## Maintaining the air filter

---



### Danger!

Cleaning agents pose a fire and explosion hazard.

Never clean the air filter with flammable solvents.



### Caution!

A cleaning of the air filter with compressed air damages the filter fabric and the air filter becomes useless.

Change the air filter when it is dirty.



### Caution!

When you use air filters from accessory suppliers, the engine can be damaged.

Only use the original AS-Motor air filter cartridges.

**Beware!** During filter change, accumulated dirt in the air filter can get into the carburetor and damage it.

1. Screw off the air filter lid.
2. Carefully pull out the filter element. Make sure that no dirt from the inside of the air filter housing enters gets into the carburetor.
3. Close the carburetor with a clean cloth.
4. Clean the inside of the air filter housing carefully.
5. Remove coarse, loose dirt from the filter element by knocking it off. Replace the filter element if the dirt is extensive or caked on.
6. Remove the cloth from the carburetor.
7. Re-insert the filter element.
8. Screw the air filter lid back on.

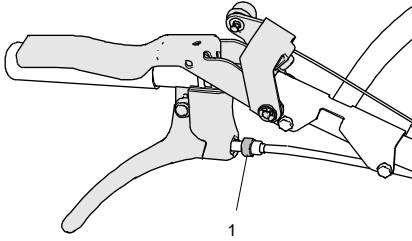
## Checking the drive

---

1. Place the device on a surface with a good grip (e.g. concrete or asphalt).
2. Switch off the engine.

3. Press blade clutch lever towards the handlebar.
4. Actuate the drive.
5. Try to pull the device backwards.

If the rear wheels block, the drive is set correctly. If you can pull the device, the drive must be readjusted.



### Re-adjusting the drive

Turn the adjusting screw (1) at the drive so that the wheels lock, while the drive is actuated, when the device is pulled. If there is no improvement after the adjustment, have the device checked by an authorised service centre.

### Checking the parking brake

1. Place the device on a surface with a good grip (e.g. concrete or asphalt).
2. Switch off the engine.
3. Try to pull the device backwards.

If you can pull the device easily, the parking brake must be readjusted. Contact an authorised service centre.

### Checking the blade



#### Danger!

Improperly mounted and maintained blades pose a severe injury hazard.

Work at the blade shall only be performed by an authorised service centre.



Wear sturdy gloves when you check the blades.

Work on the blade requires special qualifications because an unbalance test is required and the torques must be observed.

Check the blade and all fastening parts for wear, damage and cracks

- before and after each mowing operation.
- when there are significant changes.

All blade parts shown and their fastening parts must be changed

- when damage or cracks were found.
- At least once a year or every 50 operating hours, regardless of whether there is wear or not. Material wears out, gets cracks which can endanger persons or property.

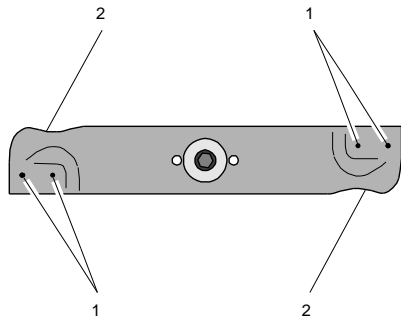
Vibrations indicate that

- the blade is worn excessively on one side or
- damage of motor or cutting unit mount (e.g. rubber elements).

Improperly sharpened blades increase the device load and result in fatigue cracks and breakage.

Ejected pieces can cause severe injuries.

### Blade change



It is absolutely necessary to change the blade:

- When one of the wear markings (1) was reached. Original blade are engraved with wear markings (marking in form of a ball-shaped imprint on the rear side of the blade).
- When the thickness of the blade at the rear edge of the vane (2) or at another point is below 1 mm (exception: cutting edge).

## Original blade

An original AS-blade is engraved with:

AS GXXXXXXXXX or EXXXXX

This corresponds to the spare part number.

## Checking the blade clutch

Check the blade clutch for proper function by disengaging the blade. The blade must come from full speed to a standstill in less than 3 seconds. Contact an authorised service centre if this is not the case.

## Storage

### Storing the device

---

Keep the device in a closed, dry, and well ventilated room and out of reach of children. Always eliminate all problems of the device before you store it so that the device is always in a safe-to-operate state. Let the engine cool down before you store the device in closed rooms.

### Longer storage

---

1. Observe the safety instructions regarding the handling of fuel.
2. Draining fuel tank: Put a piece of a tube on the fuel valve and fill the fuel in an adequate fuel container.
3. Emptying carburetor: Start the engine and let it run until it stops on its own.
4. Clean the device thoroughly.
5. Touch up defects in painting (for spray paint, see Accessories).
6. Performing corrosion protection on the engine:
  - Unscrew the spark plug.
  - Fill a tablespoon of engine oil into the spark plug opening.
  - Pull the starter rope slowly until you get resistance (oil distribution in the cylinder).

- Re-insert the spark plug and screw in fully.

- Do not fit the spark plug connector!

In autumn, have your device checked by an authorised service centre!

## Restarting

---

If you want to start the device after a longer storage, carry out the tasks described in chapter Maintenance.

## Spare parts

The reliable and safe operation of the device also depends on the quality of the spare parts used. Only use original spare parts and accessories that were approved by “AS-Motor Germany”. When foreign parts are installed, the warranty and guarantee shall be void for the foreign part and for the device and for any resulting damage.

Inform your authorised service centre about the device type and serial number of your devices when you order spare parts.

## Wear parts

Some parts are wear parts. They wear during use and must be replaced. The warranty does not cover the following parts:

Blades, cutting blades, cutter bars, blade bolts, sliding plates, V-belt, chains, Bowden cables, starter ropes, pressure plates, air filters, spark plugs, disc springs, lock washers, fuses, discs, thrust plates, pressure discs, protection skirts, impact protection, wheels, tires.

## Disposal

Grass clippings must not be thrown into the waste but should be composted.

Shredded plant material decomposes quickly, can be utilized as fertilizer, and, therefore, be left on the ground.

Dispose of waste oil and fuel in accordance with the local regulations or return it to an oil shop.

Packaging, device, and accessories are made of recyclable materials and must be disposed of accordingly.

## Warranty

The conditions of the warranty can be found on the reverse side of your warranty card. Send the filled-out warranty card immediately after the purchase of your device to “AS-Motor Germany” or the supplier. Otherwise, the warranty is no longer valid.

Preserve the proof of purchase or the warranty card that was filled out by the vendor.



## Possible faults

The following table contains the most frequent problems and their elimination. If more problems occur, contact the closest authorised service centre.

You can find an authorised service centre on our home page [www.as-motor.de](http://www.as-motor.de).

Problem	Possible cause	Remedy
<b>Engine does not start</b>	Engine stop switch is set to OFF.	Set engine stop switch to ON.
	Fuel valve is closed.	Open fuel valve.
	Tank ventilation screw is closed.	Open tank ventilation screw.
	No fuel is in the tank.	Refill fuel.
	Engine was flooded due to too many start attempts.	Unscrew spark plug and start several times when the fuel valve is closed, dry the spark plug and screw it back in.
	Spark plug connector is pulled off.	Observe the safety instructions! Put spark plug connector back on.
	Air filter is dirty.	Maintain air filter (see also Maintenance and cleaning).
	Spark plug is sooted, damaged, or incorrect electrode gap.	Clean spark plug and check electrode gap (see also Maintenance and cleaning). Replace spark plug if necessary.
	Housing of the mower is jammed.	See also Maintenance and cleaning.
<b>Engine starts badly or runs irregularly</b>	Poor quality, dirty, or old fuel.	Clean fuel system (authorised service centre). Always use fresh fuel.
	Air filter is dirty.	Maintain air filter (see also Maintenance and cleaning).
	Poor quality, dirty, or old fuel.	Always use fresh fuel.
	Spark plug is sooted, damaged, or incorrect electrode gap.	Clean spark plug and check electrode gap (see also Maintenance and cleaning). Replace spark plug if necessary.
	Housing of the mower is jammed.	See also Maintenance and cleaning.

<b>No drive when drive lever is actuated</b>	Drive belt is insufficiently tensioned.	See also Checking the drive.
<b>The blade does not rotate</b>	V-belt is insufficiently tensioned or damaged.	Authorised service centre.
	Bowden cable is defective.	Authorised service centre.
<b>The blade slides</b>	Replace friction discs.	Authorised service centre.
<b>Strong vibrations during operation</b>	Unbalance at the blade caused by incorrect sharpening or chips on the blade.	Have blade resharpened and balanced by an authorised service centre. Replace a damaged blade immediately.
	Blade drive shaft is bent due to collisions with foreign objects.	Authorised service centre.
	Engine fastening is loose.	Authorised service centre.
	Blade fastening is loose.	Authorised service centre.
<b>Irregular noises</b>	Loose fastening elements.	Authorised service centre.
	Silencer is defective.	Authorised service centre.
<b>Engine gets hot</b>	Ventilation grid is dirty.	Clean ventilation grid.
	Cooling fins of the engine are dirty.	Have cooling fins cleaned by authorised service centre.
<b>Uneven cut, lawn becomes unsightly</b>	Blade is dull or worn.	Have blade resharpened and balanced by an authorised service centre. Replace a damaged blade immediately.
	Speed is too high proportionately to the cutting height.	Reduce speed and/or select the correct cutting height.
	Housing of the mower is heavily contaminated.	Clean.
<b>Housing is jammed</b>	Mowed grass was too long or too damp.	Adjust cutting height and mowing speed to the mowing conditions.
	Blade is worn.	Authorised service centre.
	Engine speed is too low.	Authorised service centre.
<b>The device does not stop</b>	Drive belt does not declutch.	Authorised service centre.
	Parking brake is defective.	Authorised service centre.
<b>The engine does not switch off</b>	Switching off system is defective.	Close the fuel valve. Authorised service centre.

## Accessories

Spray paint 400 ml, colour orange:	G00011050	E04606
Operating hours counter:	G06927008	E10740
Clinometer:	G06950027	E11835
Mulching accessories:	G53126007	E09164

## Mixing ratios fuel

Petrol	Two-stroke oil	Only with Titan 2T 100S
(octane number at least ROZ 91)	<b>1:50</b>	<b>1:100</b>
Litre	Litre (=ml/cm <sup>3</sup> )	Litre (=ml/cm <sup>3</sup> )
1	0.02 (20)	0.01 (10)
2	0.04 (40)	0.02 (20)
3	0.06 (60)	0.03 (30)
4	0.08 (80)	0.04 (40)
5	0.1 (100)	0.05 (50)
10	0.2 (200)	0.1 (100)
20	0.4 (400)	0.2 (200)

Do not use mixtures with more oil than 1:50 (e.g. 1:35).

Too much oil results in carbon deposits and reduces the service life of the engine.

Only use the synthetic two-stroke oils explicitly intended for mixing.

Use of engine oils or even waste oil results in engine damage.

No warranty is given in these cases.

## Technical data

<b>Type</b>	AS 531 2T MK B
<b>Range of application (temperature)</b>	0 - 30 °C
<b>Engine, type</b> Manufacturer Type Cylinder capacity Performance Engine speed	One cylinder two stroke engine AS-Motor Germany AS 165 165 cm <sup>3</sup> 3.4 kW (4.6 PS) 2800 min <sup>-1</sup> .
<b>Spark plug</b>  Torque Electrode gap for optimal starting behaviour	Bosch W7RAC / Beru 14/7AU / Champion L86 / Denso W20FS-U / NGKB6HS-5 25 Nm 0.5 mm
<b>Cutting device, type</b> Cutting width Cutting height Growth height	Blade 53 cm Single wheel 30 – 80 mm, in 6 levels up to approx. 40 cm
<b>Starting device</b>	Rope start
<b>Drive</b>	Rear wheel drive with Varioshift for variable adjustment of the speed (3 - 4.5 km/h) Automatic parking brake with differential lock
<b>Maximum area coverage</b>	approx. 2300 m <sup>2</sup> /h
<b>Measures and weight</b> Transport size with packaging L/W/H Max. tyre dimensions L/W/H Weight	120/60/71 cm 164/52/99 cm 56 kg
<b>Capacities</b> Fuel tank Grass collection bag	3 litres 75 litres with fill level indicator
<b>Sound level</b> Measured sound level L <sub>WA</sub> Guaranteed sound level L <sub>WA</sub> Sound level at working place L <sub>pA</sub>	96.8 dB according to DIN EN ISO 5395 98 dB according to DIN EN ISO 5395 87 dB according to DIN EN ISO 5395
<b>Vibration emission value</b> Hand-arm-vibrations a <sub>h,w</sub> Measurement uncertainty U	2.5 m/s <sup>2</sup> according to DIN EN ISO 5395 1.5 m/s <sup>2</sup>



AS-Motor Germany GmbH & Co. KG  
Ellwanger Straße 15  
D-74424 Bühlertann  
www.as-motor.de

## Declaration of conformity

We declare that the lawnmower type  
cutting width 53 cm and with serial number

AS 531 2T MK B  
starting from 02631310001

in the version we introduced to the market complies with  
all essential health and safety requirements of the fol-  
lowing EC directives.

- 2006/42/EC  
- 2000/14/EC  
- 2004/108/EC  
- 97/68/EC

### Function:

The device is exclusively intended for the mowing of well  
maintained grasslands and lawns.

### Applied standards:

DIN EN ISO 5395

Applied conformity assessment procedures

Annex VI

Measured sound level:

96.8 dB (A)

Guaranteed sound level:

98 dB (A)

### Party involved:

DPLF, D-64823 Groß-Umstadt, EC identification number 0363

### Place where all technical records are filed:

AS-Motor Germany GmbH & Co. KG  
Ellwanger Straße 15  
D-74424 Bühlertann

Bühlertann, January 2015

Eberhard Lange  
Managing director

By Proxy Frank Einsiedler  
Head of development







## Professional technology for gardens and landscapes

Allmäher®	Manoeuvrable meadow mower for extensive green area care. The Allmäher reliably shreds metre-high grass, undergrowth, and weeds.
Ride-on Allmäher®	Ease of use and high area coverage all combined in a compact ride-on mower. Low centre of gravity, optimum weight distribution, and broad wheel base provide you with the best performance on slopes and power reserves.
Rear discharge mower	Professional lawn mower with rear discharge. With wheel drive and infinite speed regulation for exceptional cutting and catching performance in any situation.
Rotary mower	The economic alternative to bar mower. Ideal for fodder production. The grass is not shredded and placed into a pile on the side.
Flail mower	The flail blades are supported movably and avoid rocks and other obstacles and chop the cuttings several times.
Side discharge mower	This solid allrounder has a side discharge, wheel drive, and a housing of 3 mm thick plastic-coated steel.
Mulching mower	Mulching saves both time and money. The mulch stays on the ground and practically disappears into the lawn so that no complex disposal is necessary.
WeedHex	Removes weeds carefully, quickly, and without the use of chemicals: on transport surfaces, walls, curbs, and between interlocking blocks.