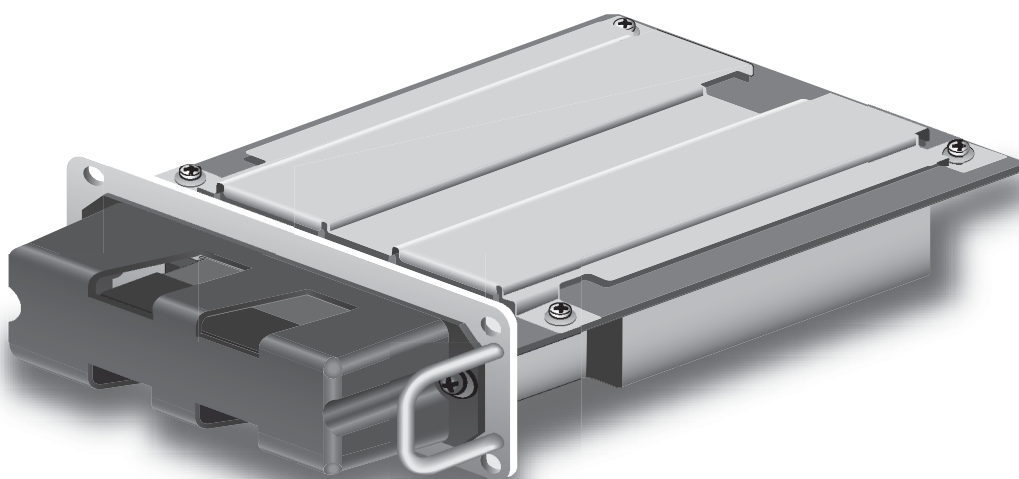


Panasonic[®]

Operating Instructions Wireless Presentation Board

Model No. **TY-FB7WPU**



Before connecting, operating or adjusting this product, please read these instructions completely. Please keep this manual for future reference.

English

TQZH578

Contents

FCC STATEMENT	3	Using Wireless Manager ME	15
Safety Precautions (Be sure to observe)	3	Startup	15
Handling Cautions	3	Description of the connection select window	15
Before using the card	3	Description of the launcher and menu	16
Accessories	4	Live mode	17
Remote Control Battery Installation	4	Pointer mode	17
Notes on Using the Wireless Card	5	Multi live mode	18
Parts and their functions	6	One shot mode	20
Installing and ejecting the wireless card	7	Options	20
Installing the wireless card on the unit	7	Operations when password entry is required for connection	21
Inserting and Removing the Wireless Card to and from a Computer	7	Adding and deleting connections	22
Software Installation	8	Using Web Browser Control	23
System requirements	8	Computer settings	23
Wireless Manager ME (Mobile Edition)	9	Starting up Web Browser Control	24
Wireless LAN Driver	9	Display control	24
Software Uninstall	12	Changing the Initial Settings	26
Wireless Manager ME	12	Changing the network number	26
Wireless LAN Driver	12	Wireless user connections	26
Simple Wireless Connection (Using the Initial Settings)	13	Returning to the Initial Settings	29
Display operations	13	Board operations	29
Computer operations	13	Computer operations	29
Canceling the connection with the plasma display ...	14	Terminology	30
		Troubleshooting	31
		Trademarks	31

Please note the following.

- Panasonic cannot be held liable for any direct or indirect damages resulting from the use or malfunction of this unit.
- Panasonic cannot be held liable for damages arising from data corruption or loss as a result of using this unit.

FCC STATEMENT

FCC STATEMENT

This equipment has been tested and found to comply with the limits for a Class A digital device, pursuant to part 15 of the FCC Rules. These limits are designed to provide reasonable protection against harmful interference when the equipment is operated in a commercial environment.

This equipment generates, uses, and can radiate radio frequency energy and, if not installed and used in accordance with the instruction manual, may cause harmful interference to radio communications. Operation of this equipment in a residential area is likely to cause harmful interference in which case the user will be required to correct the interference at his own expense.

FCC CAUTION:

Pursuant to 47CFR, Part 15.21 of the FCC rules, any changes or modifications to this monitor not expressly approved by Matsushita Electric Corporation of America could cause harmful interference and would void the user's authority to operate this device.

Safety Precautions (Be sure to observe)

■ WARNING

- **Never attempt to disassemble or modify this product.**
To avoid fire, shock or failure.
- **If you sense smoke, an odd odor, or unusual noises while in operation, immediately unplug the power cord plug from the supply outlet.**
Switch off the plasma display and unplug the power cord plug from the supply outlet.
To avoid fire or shock, do not leave the power of the display turned on.
- **To avoid shock or other problems, do not leave the power cord plug plugged into the supply outlet.**

• **Please contact our designated service department for installation or change of this product.**

• **To Service personnel:**

Before removing or installing the Terminal Board, be sure to turn the power of the display off and unplug the power cord plug from the supply outlet.

Handling Cautions

- **Do not touch the connector contacts.**
To avoid electrostatic damage to internal parts, touch a large metallic object such as a steel cabinet to discharge yourself before handling this product.

Before using the card

■ Concerning the display's card slot

Do not insert foreign objects into the display's wireless card slot. Inserting the wireless card with a foreign object inside may cause damage on the card.

Accessories

- Terminal Board Replacement Instructions



- Remote control N2QAFB000004

- Remote control batteries (2 × R6 (UM3) size)

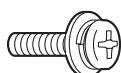


- Terminal function label (1 sheet)



(Affix this label to the rear panel of the display.)

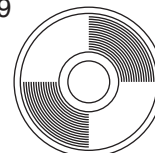
- Screw × 4 (Slot cover cramping screw)



- Screw × 2 (Screws for cramping wireless card protection cover)



- CD-ROM disc (Wireless Manager ME. etc) TVD01009

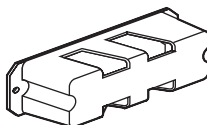


- Slot cover



[To install this Terminal Board, remove an existing dual size Terminal Board and fit it into the now blank slot.]

- Wireless card protection cover



- Wireless card

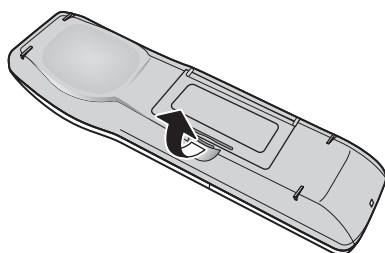


Slot Nos. of the PDP unit that are compatible with terminal board attachments.

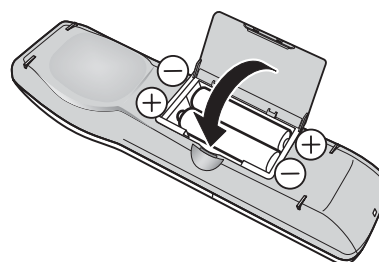
37inch	Slot1 (Slot2 is not compatible)
42inch 50inch 65inch	Slot1 (Slot2 and Slot3 are not compatible)

Remote Control Battery Installation

- 1 Open the cover.



- 2 Insert batteries and close the cover.
Note the correct polarity (+ and -).



⚠ Precautions

Mishandling of batteries can cause electrolyte leakage which can damage items the fluid contacts and may cause a fire.

- Do not mix old and new batteries.
- Do not use different types at the same time. (ex. zinc carbon and alkaline)
- Do not heat or expose to flame.
- Do not take apart or short circuit.
- Do not attempt to recharge, short-circuit, disassemble, heat or burn used alkaline or manganese batteries.
- Replace the batteries if the remote control does not work properly.

For your reference

Use alkaline batteries for longer life.

Notes on Using the Wireless Card

The optional wireless card (ET-CDWL3U) uses radio waves in the 2.4 GHz band.

A radio station license is not required when using this wireless card, but be sure to read and fully understand the following items before use.

■ About Wireless Card

The wireless card may be damaged if it is exposed to the static from human body. As such, before touching the card itself, touch a nearby metal object such as an aluminum window frame or doorknob to discharge any static that your body may be carrying.

■ Do not use near other wireless equipment.

The following equipment may use radio waves in the same band as the wireless card. When the wireless card is used near these devices, radio wave interference may make communication impossible, or the communication speed may become slower.

- Microwave ovens, etc.
- Industrial, chemical and medical equipment, etc.
- In-plant radio stations for identifying moving objects such as those used in factory manufacturing lines, etc.
- Designated low-power radio stations

■ If at all possible, avoid the use of cellular phones, TV sets or radios near the wireless card.

Cellular phones, TV sets, radios and similar devices use different radio bands from the wireless card, so there is no effect on wireless card communication or the transmission and reception of these devices. However, radio waves from the wireless card may produce audio or video noise.

■ The wireless card radio waves cannot penetrate steel reinforcements, metal, concrete, etc.

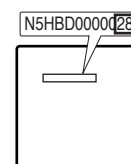
Communication is possible through walls and floors made from materials such as wood and glass (except glass containing wire mesh), but not through walls and floors made from steel reinforcements, metal, concrete, etc.

■ Channels that can be used

The channels (frequency range) that can be used differ according to the country or region where the wireless card is used. Refer to the table below.

Country or region	Standard	Last two digits of the card product number*	Channels used	Frequency band
Japan	ARIB STD33 & T66	27	1 - 13	2,412 MHz - 2,472 MHz
United States	FCC part 15	28	1 - 11	2,412 MHz - 2,462 MHz
Taiwan	DGT			
Malaysia	SIRIM			
England, Germany, France, Italy, Belgium, Austria, Sweden, Norway, Denmark, Switzerland, Holland, Finland, Portugal, Greece, Thailand, South Korea, Australia, New Zealand	ETSI 300.328	29	1 - 13	2,412 MHz - 2,472 MHz

* Check the last two digits of the product number noted on the card rear label in the position shown in the right figure to determine the product region of the wireless card you have purchased.



Note:

Bringing a wireless card into a country other than the designated country is prohibited, and may infringe upon the wireless telegraphy laws of that country.

Parts and their functions

■ Remote control

POWER ON button

Input selector button

Select the setting suitable for the connected device.
Function in the same way as the **INPUT** button on the remote control for the plasma display. (Refer to the instructions for the plasma display.)

Screen mode button

Function in the same way as the **ASPECT** button on the remote control for the plasma display. (Refer to the instructions for the plasma display.)

Up and Down buttons

This key can be used to control PC applications which support it.

Index button

Switch the display screen (Multi-drive Mode)

ID setting button (ID SET)

Set the ID of the remote control when operating a system that uses a multiple number of displays.

Numbered buttons

Set the remote control ID.
While holding down the **ID SET** button, input a 2-digit ID by pressing the corresponding number keys.

POWER OFF button

Enter button

Set the screen when Multi-live Mode (Index Style) is selected.

Left and right buttons

Select the screen when Multi-live Mode (Index Style) is selected.

Return button

No operation can be made to the unit.

Menu button

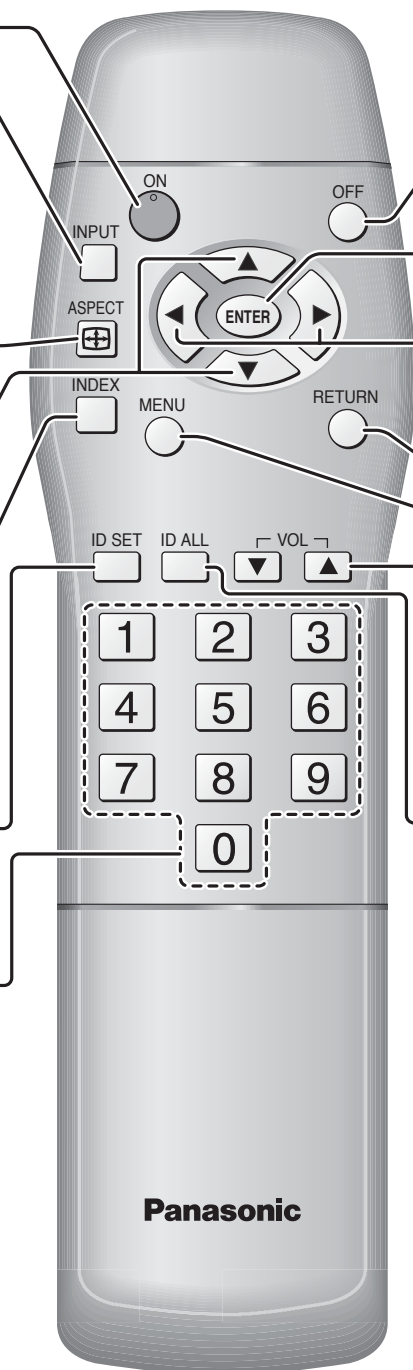
No operation can be made to the unit.

Volume buttons

Increase or reduce volume.

ID setting button (ID ALL)

Establish a mode for the simultaneous control using a single remote control when operating a system that uses a multiple number of displays.



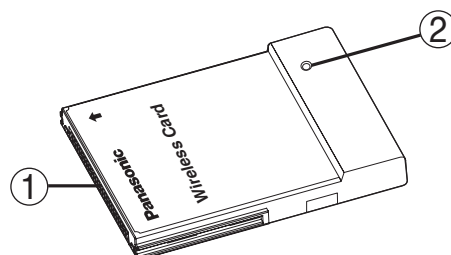
■ Wireless card

① Connector

The port where the wireless card is connected to the wireless card slot on the display. Do not touch it.

② Wireless card access monitor light

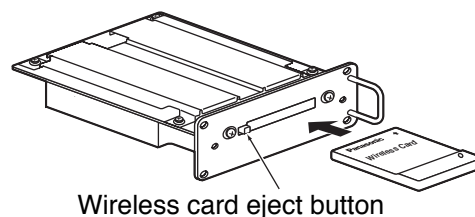
Flashes when wireless communication is opened.



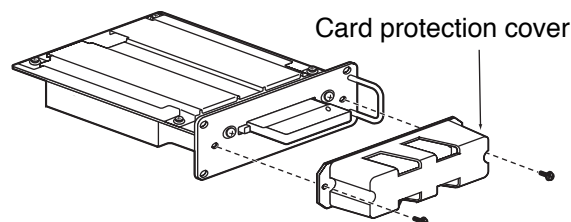
Installing and ejecting the wireless card

Installing the wireless card on the unit

- 1** Insert the wireless card into the unit.
(Push it until the eject button pops up.)



- 2** Install the wireless card protection cover with the two screws.



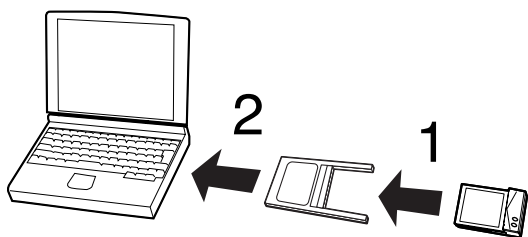
- 3** Install the unit into the slot 1 of the plasma display.

* Refer to the instructions for replacing the terminal board.

Inserting and Removing the Wireless Card to and from a Computer

Insertion

- Be sure to install the Wireless LAN Driver before inserting the card.
- The example given here describes the insertion of the ET-CDWL3U card.
When using a different card, refer to the user's manual for that card.
- Be sure to also read the user's manual for the computer.
- Attempting to force in the wireless card facing the wrong direction may result in malfunction.



- 1** Mount the card in the adapter.

- 2** Insert the adapter into the PC card slot of the computer.

Removal

Shut down Wireless Manager ME if it is in use.

- 1** Click the [PC card] icon displayed in the task bar at the lower right of the screen.
When the [PC card] icon is not displayed:
Open [Start] → [Control Panel] → [PC card], place a check in the [Show control on the task bar] checkbox, and then click [OK].
- 2** Select [Panasonic Wireless LAN PC Card] and click [Stop].
- 3** Click [OK] and remove the wireless card.

Software Installation

System requirements

The computer must meet the following requirements in order to use the supplied software.

OS:	Windows XP/2000/Me (Millennium Edition)/98SE (Second Edition)
CPU:	Pentium III or faster or compatible processor (Celeron 633 MHz or faster is recommended. However, 800 MHz or faster is recommended when using live mode.)
RAM:	64 MB or more (128 MB or more for Windows XP/2000)
Empty hard disk capacity:	44 MB or more
Hardware conditions:	CD-ROM drive (for software installation) Built-in PC (PCMCIA) card slot (TYPE II or TYPE III) The wireless card (ET-CDWL3U) must be installed and operating properly.
Web browser:	Internet Explorer 6.0 or newer Netscape 7.0 or newer

Note:

Note that operation is not guaranteed when used with system environments other than the above or on homemade computers.

Operation is not guaranteed for all computers that meet the above conditions.

Software Installation (cont.)

Wireless Manager ME (Mobile Edition)

Wireless Manager ME:

This software is used to send screen images from a computer to the display via a wireless LAN.

- Be sure to install the Wireless LAN Driver in the computer before inserting the wireless card into the computer.

Notes:

- Shut down all software currently active on Windows. Otherwise, installation may not be possible.
- Administrator authority is required for installation with Windows XP/2000.

1 Set the supplied CD-ROM in the CD-ROM drive.

The installer starts up automatically and the following screen appears.



Note:

If the installer does not start up automatically, double-click [EasyInstall] → [Easy_Inst.exe] in the CD-ROM.

2 Click [Wireless Manager ME].

Follow the instructions on the screen and install the software.

Wireless LAN Driver

The Wireless LAN Driver must be installed in order to use the wireless card with a computer.

- Described below is an example of installing the driver. Some windows appear in English.

Notes:

- Be sure to install the Wireless LAN Driver in the computer before inserting the wireless card into the computer.
- If you insert the card into the computer by mistake before installing the driver, the card is recognized by the hardware auto detect function as an unknown device. Perform the following operations with the card inserted and then install the driver.

Windows XP/2000: Open [Control Panel] → [System] → [Hardware] → [Device Manager], and delete the unknown device or "Panasonic Wireless LAN PC Card".

Windows 98SE/Me: Open [Control Panel] → [System] → [Device Manager], and delete the unknown device or "Panasonic Wireless LAN PC Card".

Software Installation (cont.)

■ Windows 2000/98SE/Me:

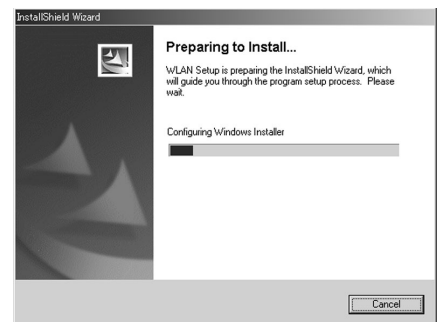
- 1 Click [Wireless LAN Driver] at the window appearing in step 1 on page 9.

The window shown to the right appears.



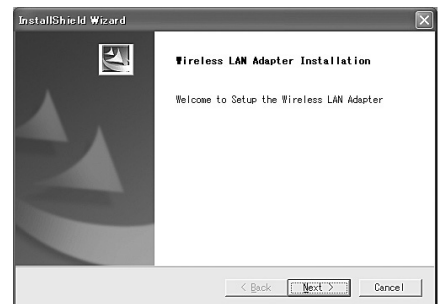
- 2 Select the model of the wireless LAN card, then click [Install].

The installer starts up.



- 3 Click [Next].
The License Agreement appears.

Then click [YES].



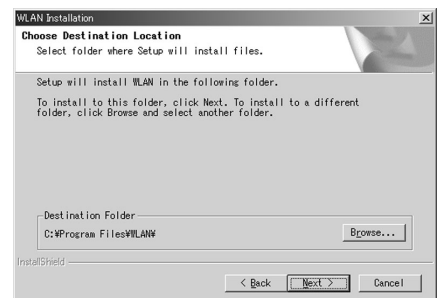
- 4 Designate the utility storage destination, and click [Next].

The software is downloaded.

(Windows 2000):

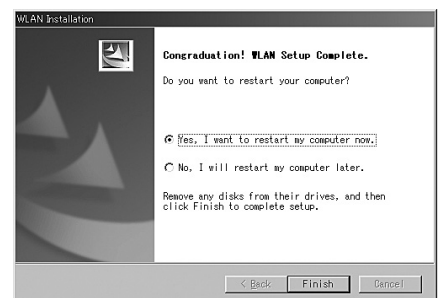
[Digital Signature Not Found] appears.

Click [YES], then follow the on-screen instructions and proceed.



- 5 If a screen appears asking you to restart, click the check box for [Yes, I want to restart my computer now], then click [Finish].

The computer reboots.



- 6 Mount the optional wireless card (ET-CDWL3U) into the CF card adapter and insert it into the computer. (See page 7)

When the permanent icon can be confirmed, the installation is complete. When [Digital Signature Not Found] appears, click [Yes] and continue the installation.

If this icon cannot be found, select [Start] → [Programs] → [Wireless Network] → [Wireless Network LAN Adapter].

Software Installation (cont.)

■ Windows XP:

Follow steps 1 to 5 on “Windows 2000/98SE/Me” (page 10), then perform the following operations.

- 6 Mount the optional wireless card (ET-CDWL3U) into the CF card adapter and insert it into the computer.** (See page 7)

The Found New Hardware Wizard starts up.

- 7 Make sure that the [Install the software automatically (Recommended)] checkbox is checked, then click [Next].**

A logo text message appears.

- 8 Click [Continue Anyway].**

The Wizard complete message appears.

- 9 Click [Finish].**

The logo authentication message appears.

Check after installation:

Open [Start] → [All Programs] → [Connect To] → [Show all connections], and check that [Panasonic Wireless LAN PC Card] has been added to the wireless network connection icons.



Software Uninstall

Wireless Manager ME

From the desktop, select [Start] → [Programs] → [Panasonic Wireless Display] → [Uninstall Wireless Manager mobile edition].

Follow the instructions appearing on the screen and uninstall the software.

Wireless LAN Driver

■ Windows XP:

- 1** Set the supplied CD-ROM in the CD-ROM drive.
- 2** Execute [Wireless Card] → [setup.exe] in the CD-ROM.
The uninstall software starts up.
- 3** Make sure that a check is placed in the [Remove] checkbox, then click [Next].
- 4** When the uninstall complete message appears, click [Finish].

■ Windows 2000/Me/98SE:

- 1** Select [Start] → [Programs] → [Wireless Network] and execute [Uninstalled].
- 2** Make sure that a check is placed in the [Remove] checkbox, then click [Next].
- 3** Make sure that a check is placed in the [Yes, I want to restart my computer now.] checkbox, then click [Finish].

Simple Wireless Connection (Using the Initial Settings)

When making a wireless connection between the plasma display and the computer using the default settings with the supplied wireless card and the optional wireless card (ET-CDWL3U), the IP address, communication mode and other necessary settings are made automatically when Wireless Manager ME is started up. However, note that Wireless Manager ME and the Wireless LAN Driver must be installed. For details on changing the initial settings and using the changed settings, refer to pages 26 to 28.

Notes:

- When not using the optional wireless card noted above, simple connection cannot be used with Windows Me/98SE.
- Operation is not guaranteed for all wireless cards and built-in wireless LAN adapters, even when using Windows XP/2000.
- You may not be able to use other network adapters during simple connection.

Display operations

1 Insert this unit into the slot 1 of the display

(Refer to the instructions for replacing the terminal board.)

Only the supplied card can be used for the display side.

2 Turn on the display.

Computer operations

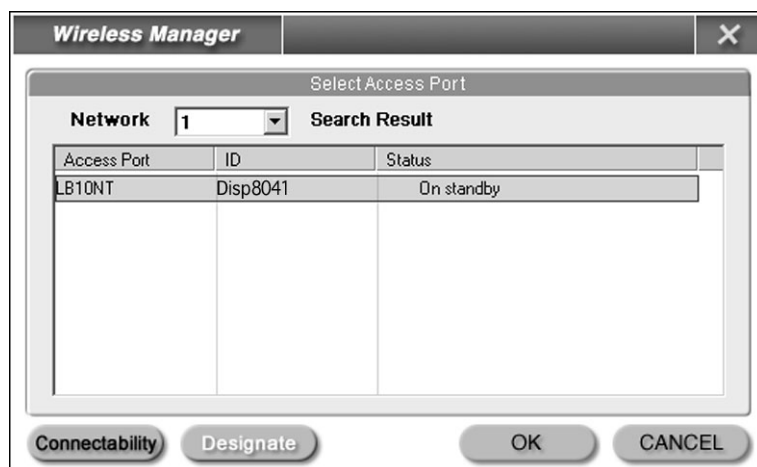
1 Insert the optional wireless card into the computer.

(See page 7)

2 Turn on the computer.

3 Select [Start] → [Programs] → [Panasonic Wireless Display] → [Wireless Manager mobile edition].

- Wireless Manager ME starts up, and the connection select window shown below appears.



4 Select the connection and click [OK].

The launcher shown below appears and the connection with the plasma display is established.

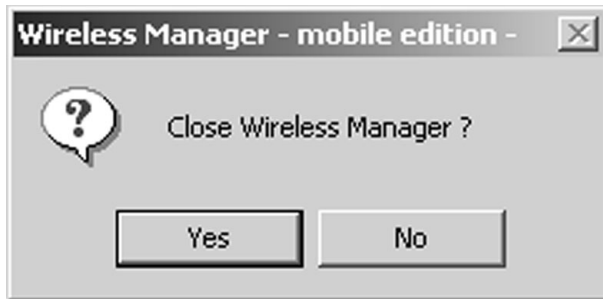


Simple Wireless Connection (Using the Initial Settings) (cont.)

Canceling the connection with the plasma display

1 Click [X] on the launcher.

The following window appears.



2 Click [Yes].

The computer returns to the original network settings when the connection is ended. However, note that some time may be needed to return to the original network settings.

Notes:

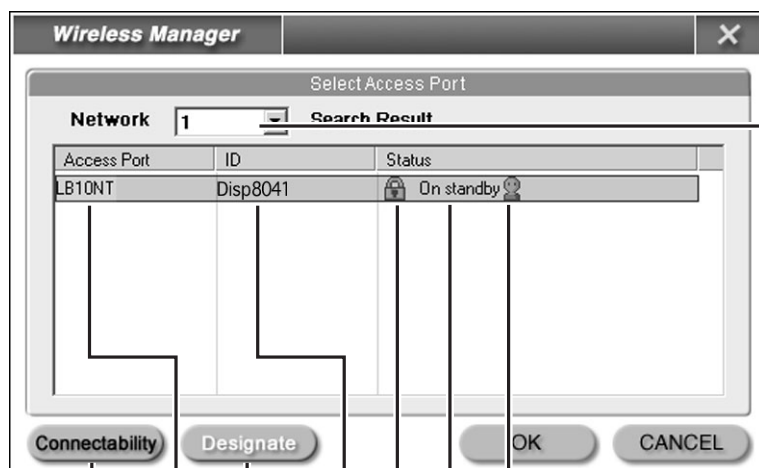
- The initial network number setting for both the plasma display and the computer is "1". These numbers must match for the connection.
- Depending on the computer and wireless card used, automatic setup may not be possible. If this is the case, the [Network] setting on the screen in step 3 on page 13 will be switched to [USER] automatically. For details of the connection procedure, first close Wireless Manager ME, and then refer to page 26.

Using Wireless Manager ME

Startup

Select [Start] → [Programs] → [Panasonic Wireless Display] → [Wireless Manager mobile edition].

Description of the connection select window



When the network number to be connected differs, select the network number to be connected. The network settings change according to this selection. This network number is stored in the computer, so connection is performed with the current number the next time Wireless Manager ME is started up.

This indicates the number of people connected to this unit.

This indicates the status of this unit.

This appears when password entry is needed for connection. (See page 21)

Unit unique ID

The equipment to be connected can be designated when [Network] is set to [USER]. (See page 22)

Unit name

Click this to display the board name at the upper left of the display screen.


• Note that if the display aspect is in Zoom mode, the display will run off the screen.

Note:






With Windows Me or Windows 98SE, [1] or [USER] is the only available selection option for the network number.

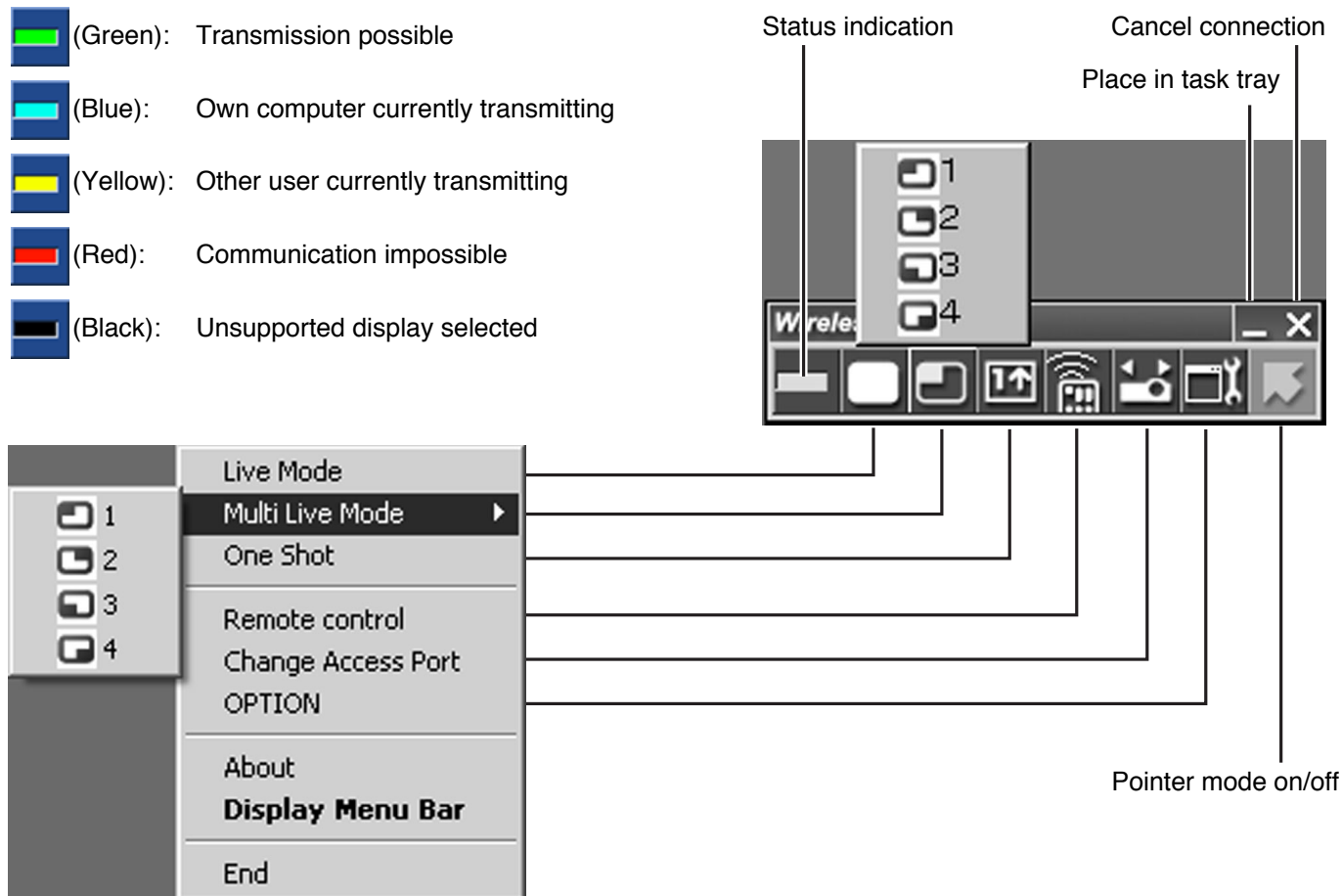
Using Wireless Manager ME (cont.)

Description of the launcher and menu

The launcher always appears on the computer screen, and can be used to perform various operations.
Right-click [] on the task tray to display the menu.

Status indication:

	(Green): Transmission possible
	(Blue): Own computer currently transmitting
	(Yellow): Other user currently transmitting
	(Red): Communication impossible
	(Black): Unsupported display selected



Live Mode:	Displays the computer screen over the entire display screen.
Multi Live Mode:	Display the computer screen in one of the four areas on the display screen.
One Shot:	Transmits a snapshot of the current computer screen to the display one time.
Remote control:	Starts up Web Browser Control.
Change Access Port:	Displays the connection select window.
OPTION:	Displays the option setting window.


Notes:

- With windows 2000 Or Windows XP, the launcher appears only on the computer screen and is not display.
- When you do not wish to display the launcher on the computer screen, you can place the launcher in the task tray and use it as a menu from the task tray.
- Live, Multi-live and One-shot
The resolutions that can be transferred from a PC are VGA, SVGA and XGA. Other resolutions may be transferred; however, the transmission speed will slow down as the resolution is converted on the PC side before being transferred.

Using Wireless Manager ME (cont.)

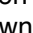
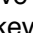
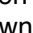
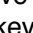
Live mode

1 Check the status indication on the launcher to make sure that transmission is possible (check that the green lamp is lighted).


2 Click [] on the launcher.

The current computer screen is transmitted to the selected display. In the live mode the display is occupied by a single computer, so operations from other computers are not possible.

Note:

For presentations in full-screen live mode, the [ ] buttons on the remote control will function in the same way as the computer's up and down keys. This means that if you run a computer application that supports the [ ] buttons, the presentation screen can be changed using the remote control.

■ Quitting live mode

Click [] on the launcher.

Note:

Whether to keep the last image in the display or clear it after quitting live mode can be set as an option. (See page 20)

Pointer mode

You can change the shape of the pointer appearing on the display screen in live mode to one that can be used for presentation purposes.

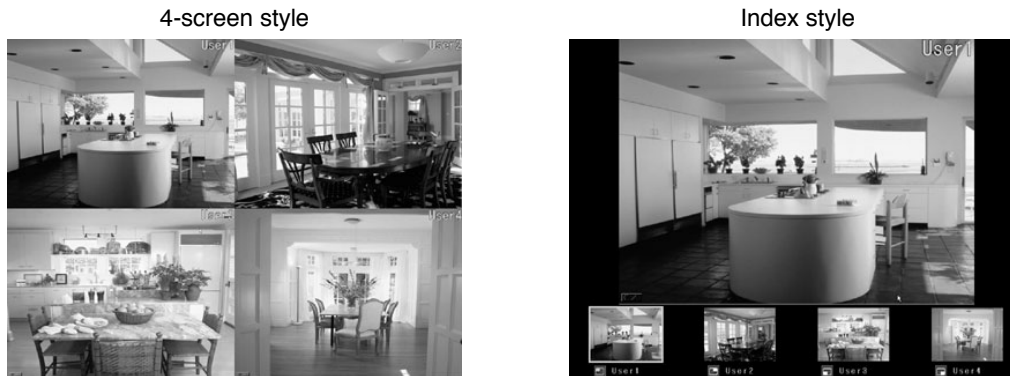
Click [] on the launcher.

At each time of clicking, the shape of the mouse pointer changes.

Using Wireless Manager ME (cont.)

Multi live mode

This mode lets you transmit the images from four computers at the same time to a single display. Furthermore, you can select either the “4-screen style” or the “Index style” for this mode, and switch alternately between the modes by pressing the [INDEX] button on the remote control.



Notes:

- When the display starts up, the 4-screen style is set for multi live mode.
- When the style setting is switched, live mode will be released for a computer in live mode. To resume the live mode, re-establish it from the launcher.

■ 4-screen style

1 Check the status indication on the launcher to make sure that transmission is possible (check that the green lamp is lighted).

2 Click [] on the launcher.

3 Select and click the display position.
The computer image is transmitted to the selected quarter of the display screen.



Switching to a different position

Select and click a different display position in step 3 above.

Quitting multi live mode

Select and click the checked position in step 3 above.



Note:

In 4-screen style mode, the computer images from all the computers connected to the display can be transmitted to the display. (The last multi live request has priority.)

Using Wireless Manager ME (cont.)

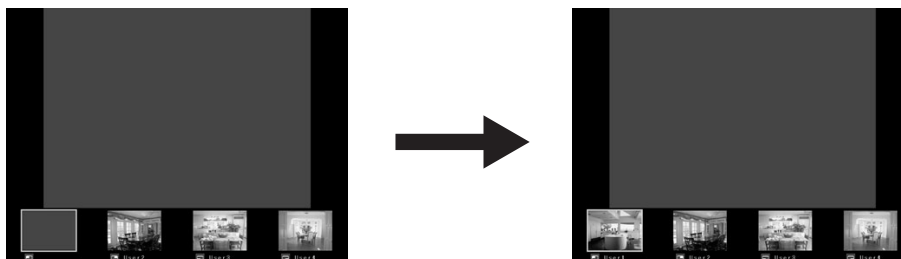
■ Index style

1 Check the status indication on the launcher to make sure that transmission is possible (check that the green lamp is lighted).

2 Click [] on the launcher.

3 Select and click the display position.

The computer image is transmitted to the area of the corresponding icon.



Enlarged display

- Use the [◀ ▶] buttons on the remote control to move the focus to the image to be enlarged, and press the [ENTER] button.
- The image is enlarged and displayed at the top of the display screen.



- The image display will fill the entire screen if the [ENTER] button is pressed again.
- To return to the screen before, press the [ENTER] button again.



Note:

While an enlarged image is displayed, the [▲ ▼] buttons on the remote control will function in the same way as the computer's up and down keys. This means that if you run a computer application that supports the [▲ ▼] buttons, the presentation screen can be changed using the remote control.

Now use the [▲ ▼] button to set the window of the application that you want to run to the active status. (If you operate the launcher, you will set the launcher to the active status: as a result, you will need to set the window of the required application to the active status again.)

Quitting multi live mode

Select and click the checked position in step 3 above.




Note:

In the index style mode, the green status display lamp remains lighted. You can transmit the computer images from other computers to the display only for those icon areas which are not yet in use.

Using Wireless Manager ME (cont.)

One shot mode

In this mode, a snapshot of the current computer screen is transmitted to the display.

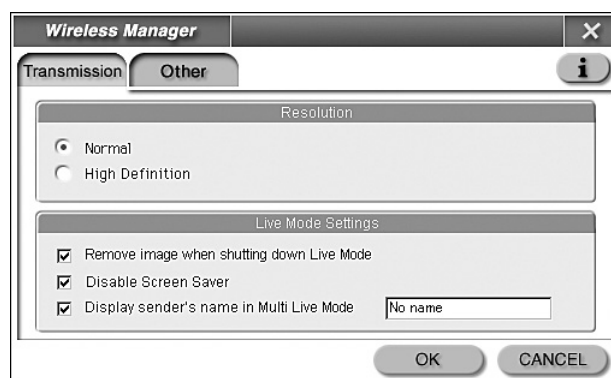
- 1 Check the status indication on the launcher to make sure that transmission is possible (check that the green lamp is lighted).
- 2 Click [] on the launcher.

Options

You can make various settings related to image data transmission.

Click [] on the launcher.

The following window appears.



■ Picture quality selection

Select the quality of the image transmitted from the computer to the display.

Select [Normal] or [High Definition].

Click [Transmission]

■ Live mode settings

You can set the computer operation in live mode and multi live mode.

Click [Transmission]

[Remove image when shutting down Live Mode]:

Check this box to clear the display screen from the projector when live mode ends. Normally the image when live mode ends remains displayed.

[Disable Screen Saver]:

This disables the computer screen saver function while Wireless Manager ME is operating. Check this box to disable screen saver operation during live mode.

Note:

If the Windows screen saver is set for password protection, Live Mode will be terminated and the last page that was sent will be displayed.

[Display sender's name in Multi Live Mode]:

The characters (max. 8) which have been entered are displayed at the upper right of the transmitted screen. In the index style mode, they are also displayed on the right of the icon. ("No Name" appears when the sender's name has not been input.)

Using Wireless Manager ME (cont.)

■ Shortcut key settings

You can set shortcut key combinations that let you control the Wireless Manager ME functions by computer keyboard operations.

Click [Other].

[Live Mode]:

Shifts to full screen display.

[Multi Live Mode]:

Shifts to multi screen display.

[One Shot]:

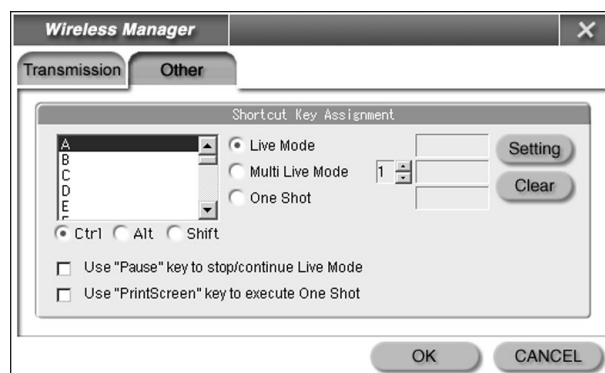
Transmits the entire computer screen one time.

[Use “Pause” key to stop/continue Live Mode]:

Stops live mode and multi live mode.

[Use “PrintScreen” key to execute One Shot]:

Transmits the entire computer screen one time.



Note:

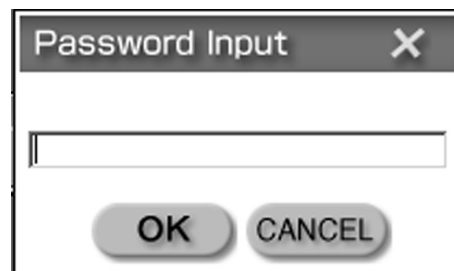
In live mode and multi live mode, the one shot key switches the mode without stopping live mode.

Operations when password entry is required for connection

When a board with the [🔒] mark is selected, the window shown to the right appears. Enter the password and click [OK].

Notes:

- Click [CANCEL] at the password entry window to return to launcher (See page 16).
- When an incorrect password is entered, an error message appears. Click [OK] to return to the password entry window and enter the correct password again.



Using Wireless Manager ME (cont.)

Adding and deleting connections

When [Network] is set to [USER] at the connection select window, connections can be added and deleted by the following operations.

■ Adding a connection

1 Click [Designate] at the connection select window.

The window shown to the right appears.



2 Click [ADD] and enter the IP address (including its periods) of the connection to be added, and then click [REGISTER].

The newly registered connection is added to the connection list in the window shown in step 1.



The IP address shown is an example of an entry, and is not the actual address.

■ Deleting a connection

Select the connection to be deleted at the window shown in step 1 and click [DELETE].

Using Web Browser Control

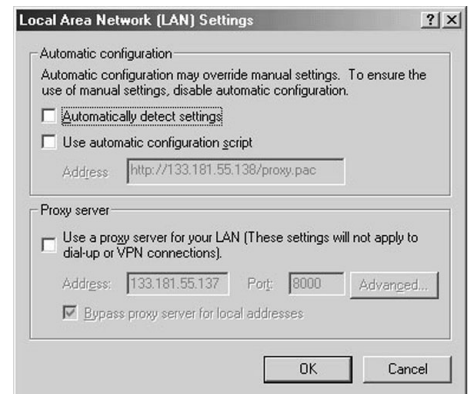
Computer settings

- 1 Right-click the [Internet Explorer] icon.**
Open the Properties window.



- 2 Open [Connections] → [LAN Settings]. If [Use automatic configuration script] has been checked, remove the check, and click [OK].**

The setting window closes.



Notes:

- When a proxy server is already being used, these settings are automatically established if the network number is 1 to 4. (However, only for Internet Explorer Ver.6.0 or newer)
- In all other cases, under [Advanced] you must set the IP address of the display to be connected for not using the proxy server as an exception.


- 3 Select [Security] and set the security level to [Default Level], or select [Custom Level] and check the [Enable] checkbox under [Active scripting].**

Note:

When using Netscape, select [Edit] → [Preferences] → [Advanced] and enable JavaScript.

Using Web Browser Control (cont.)

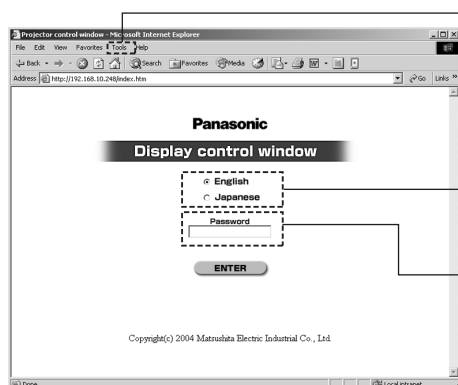
Starting up Web Browser Control

Click [] on the launcher (see page 16) or start up the browser software, and enter the IP address set by the display.

(The example below describes the case when using Microsoft Internet Explorer.)

Web Browser Control starts up.

■ Top window



Set to not use a proxy server.
(When using a proxy server,
refer to the above [Computer
settings].)

Select English or Japanese.

Enter the password when a
password is set.

Notes:

- If you have forgotten the password, initialize the board.
- The top window may not appear depending on the browser software. In this case start up Web Browser Control again, or press the [Ctrl] + [R] keys.

Display control

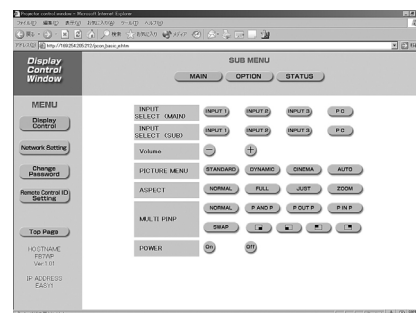
Click [Display Control] in the menu.

You can make various board and display settings.

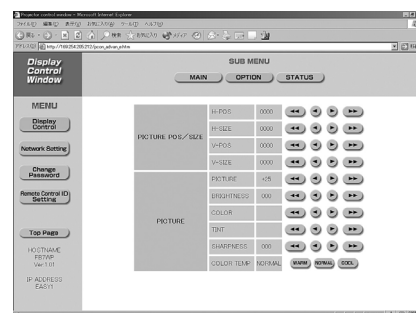
■ Basic control window

Note:

Connection with the display may not be possible immediately after the power is turned on. In this case wait a bit and then make the connection again.



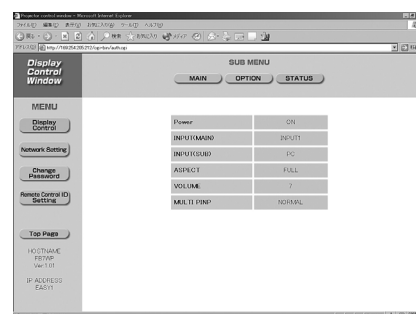
■ Option control window



■ Monitor information window

Note:

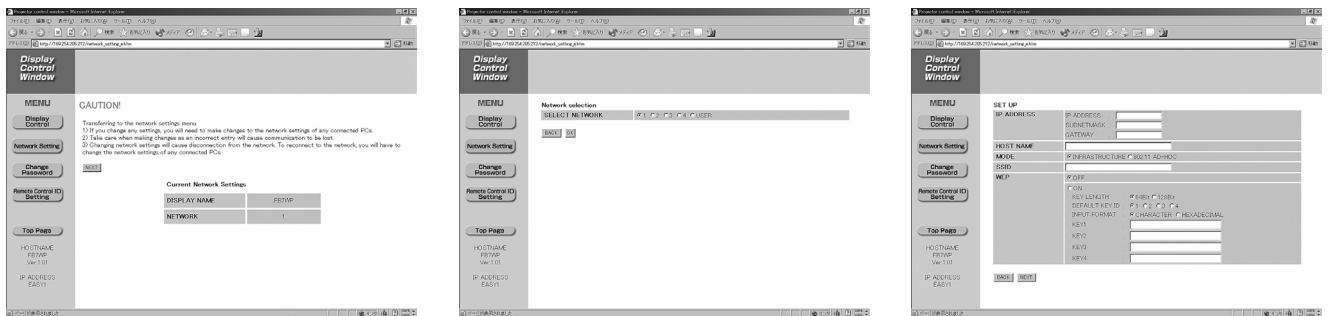
The monitor information is refreshed at fixed intervals (30 seconds), but the current exact information can be checked by clicking [View] → [Refresh] or press function key [F5] of PC.



Using Web Browser Control (cont.)

■ Network setting window

Change the network number and connect the User, then enter necessary data.

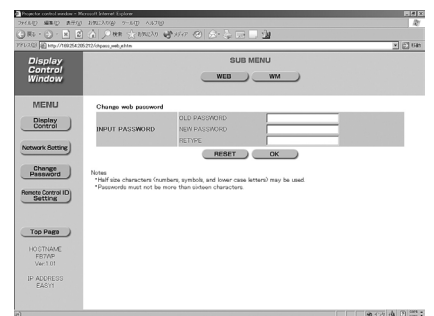


■ Password changing window

Enter the old password and new password, and click [OK].

On the submenu screen, set or delete the log-in password for:

- WEB: Web browser control
- WM: Wireless Manager

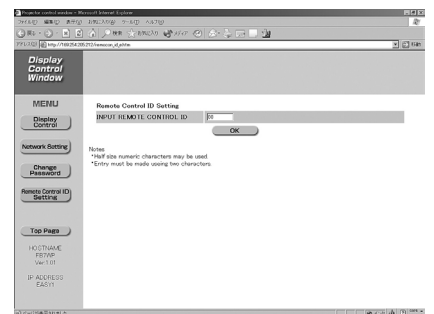


■ Remote control ID

In a system that uses a multiple number of displays, set the remote control ID of the board.

The remote control must also be set in order to enable this function. (See page 6)

The initial value is 00. (This corresponds to the remote control [ID ALL] button.)



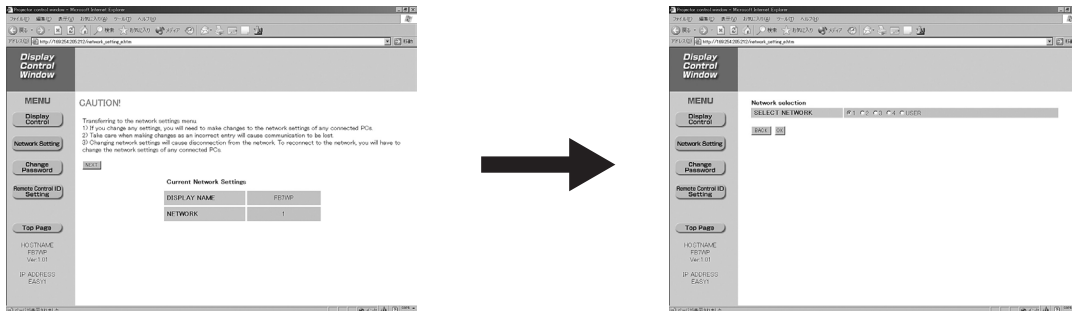
Changing the Initial Settings

When making a wireless connection between a computer and the display with settings other than the default settings, make the following settings.

Changing the network number

■ Computer operations

Click on “Network Setting” of the web browser control and click “Next”, then select a network group and click “OK”.



■ Computer settings

Perform steps 1 to 3 on page 13, then perform the following operation.

Select the network group from the network number list.

Notes:

- With Windows Me or Windows 98SE, [1] or [USER] is the only available selection option for the network number.
- [USER] is used when the computer's network settings are to be performed manually for connection with the display. (See the following)



Wireless user connections

Connect the display and computer before taking the steps below.
(See page 13)

■ Computer operations

1 Click  on the launcher (See page 16).

2 Change the board settings by WEB Control.

Make the SSID, communication mode, IP address, subnet mask and WEP settings, and then quit WEB Control.

Note:

When [USER] is set, the name does not appear in the connection list until the display network number is switched to [USER].

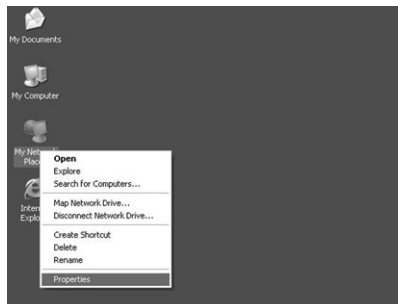
Changing the Initial Settings (cont.)

■ Computer settings (TCP/IP settings)

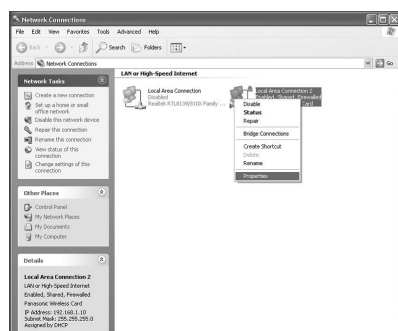
Windows XP/2000:

The screens show the example for Windows XP.

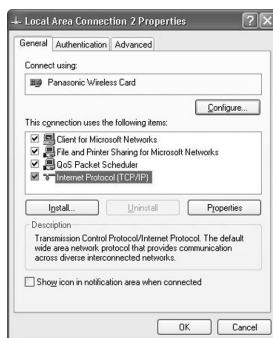
- (1) Right-click [My Network Places] to open the Properties window.



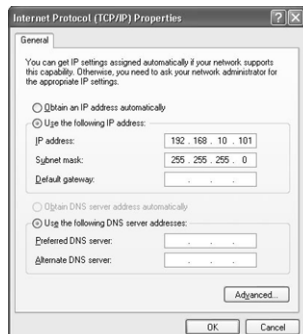
- (2) Right-click [Panasonic Wireless LAN PC Card] to open the Properties window.



- (3) Select Internet Protocol (TCP/IP) and click [Properties].



- (4) Enter the same segment IP address as the IP address set by the display.



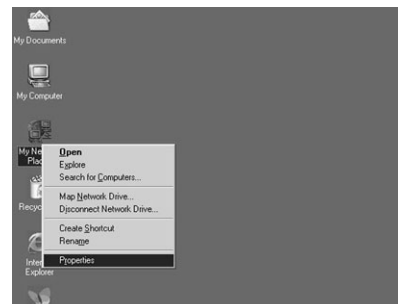
- (5) Enter the same value as the subnet mask set by the display, set the gateway (only in infrastructure mode), and then click [OK] to return to the previous window.

- (6) Click [OK].
The new settings can be used without rebooting.

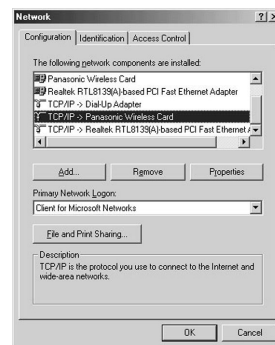
Windows Me/98SE:

The screens show the example for Windows Me.

- (1) Right-click [My Network Places] to open the Properties window.

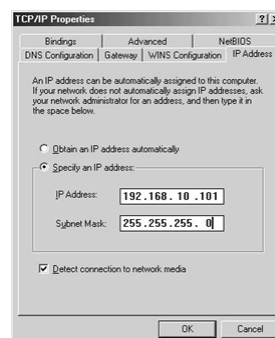


- (2) Select [Panasonic Wireless LAN PC Card] and click [Properties].



- (3) Enter the same segment IP address as the IP address set by the display.

- (4) Enter the same value as the subnet mask set by the display.

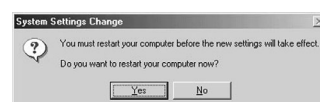


- (5) Set the gateway (only in infrastructure mode) and click [OK] to return to the previous window.

- (6) Click [OK].



- (7) Click [Yes].



Changing the Initial Settings (cont.)

■ Computer settings (Wireless card setting)

Windows XP:

The dedicated utility software is not necessary. Refer to the Windows XP manual for a detailed description.

- (1) Select [Start] → [Connect To] → [Show all connections] → [Wireless network connection].
- (2) Right-click the [Panasonic Wireless LAN PC Card] icon and select [Show available wireless network].
The wireless network connection window appears.
- (3) Select the display's SSID from the list of [Available wireless network], then click [Connect To]. When it does not appear, follow the on-screen instructions and set it.

Notes:

- When encryption (WEP setting) is set by the display, enter the WEP key (character input) information to [Network Key] before clicking [Connect To].
(default setting: No WEP)
- To check the detailed network settings, click the [Wireless network settings] icon at the network connection window.

Windows 2000/Me/98SE:

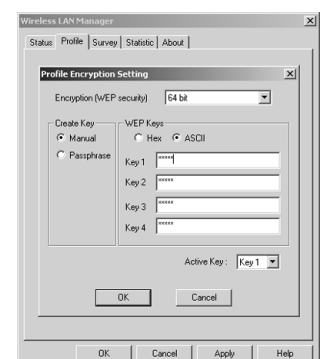
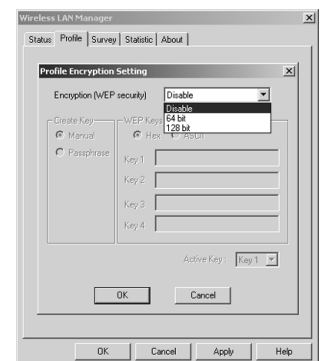
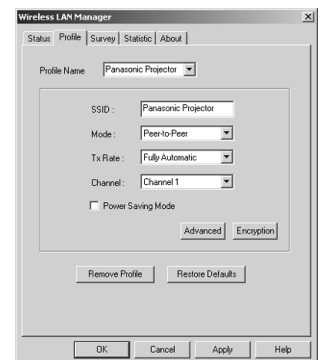
Note:

Do not use the utility software during simple connection, as this may cause a problem in connection with the display.

- (1) Double-click the permanent icon at the lower right of the computer screen.
The utility software starts up.



- (2) Click [Profile].
- (3) Enter the network name and the SSID of the display to be connected.
- (4) Select the communication mode of the display to be connected, and set the transfer rate (Tx Rate) to [Full Automatic].
Leave the Channel Setting (Channel) to default.
- (5) If encryption (WEP) has been set in the display, click the encryption setting (Encryption).
- (6) Select the encryption key length, which is set in the display, and enter the WEP key.



Returning to the Initial Settings

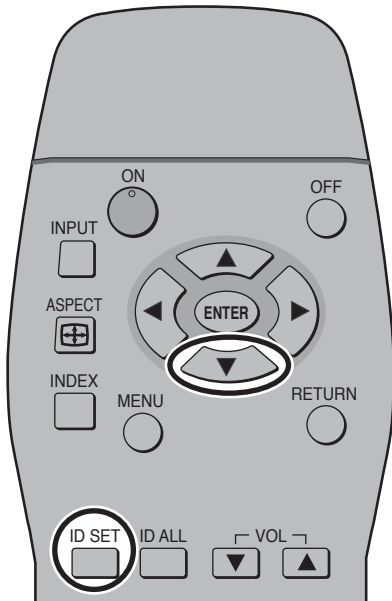
You can return the changed settings to the initial conditions. (Exit the Wireless Manager before proceeding.)

Board operations

1 Push  key of remote control once .

2 Then Push  key three times.

“RESET!” is displayed at the upper left of the screen.



Computer operations

Start the Wireless Manager ME and set the network number to [1] (see page 26).

Notes:

- The communication mode does not support AdHoc mode. Select 802.11 AdHoc (Peer to Peer) or Infrastructure (Access Point).
- Some cards other than the optional wireless card (ET-CDWL3U) support only AdHoc mode. These cards cannot be used.
- When using encryption (WEP), change the setting from [Disable] to [64 bits] or [128 bits]. Set to [Disable] when not using encryption.
- WEP input can be selected from character input (ASC II) or hexadecimal input (Hex).
Character input: 5 characters for 64 bits, 13 characters for 128 bits
Hexadecimal input: 0 to 9 and A to F. 10 characters for 64 bits, 26 characters for 128 bits
- Set the WEP key to match the display side setting. Leave the key (Active Key) to default: 1.

Terminology

802.11 AdHoc (Peer to Peer) mode

This mode performs communication directly between the display and a computer with a built-in wireless LAN or a computer with a wireless LAN card mounted. The SSID must be set.

Access point

A wireless station used to connect a wired LAN and a wireless LAN.

AdHoc mode

This mode performs communication directly between the display and a computer using built-in wireless LAN or a computer with a wireless LAN card mounted. The display and computer channel settings must be the same. Some cards do not support this mode.

Channel

When multiple access points that use the same frequency band during communication are installed near each other, radio wave interference may cause the communication speed to drop. The frequency band can be divided into 14 channels for communication to reduce this interference in a wireless LAN. (The number of channels differs according to the country of use.) However, there is still some interference between adjacent channels, so communication channels should be separated by 2 or 3 channels during actual use.

DHCP

Abbreviation for Dynamic Host Configuration Protocol. This function automatically assigns IP addresses to the connected equipment. If a device with the DHCP server function is present within a LAN, it automatically assigns IP addresses to the connected equipment. This is not supported on the display side.

Gateway

This is a relay point for connecting different networks.

This refers to the hardware and software used when connecting a network with a network that uses a different protocol, etc. It adjusts the protocol and other differences between networks to allow connection with other networks.

Infrastructure mode

This mode performs communication via an access point connected to a wired LAN.

This makes it possible to transfer images to the display through an access point even from a computer without a wireless LAN card mounted.

IP address

Internet Protocol (IP) is a protocol for distributing data, and the address corresponding to the data distribution destination is called the IP address. The same IP address cannot be used within the same LAN.

LAN

Abbreviation for Local Area Network. This is a network with a relatively narrow range such as inside a company. There are wired LAN and wireless LAN.

SSID

Abbreviation for Service Set ID. The SSID identification code must be set to distinguish equipment included in a wireless LAN that uses access points from equipment not included in that LAN.

This may appear as the "ESSID" or the "network name" for wireless LAN cards made by some manufacturers.

Subnet mask

This limits the range of the IP addresses assigned to computers in order to divide the network into a number of sections during TCP/IP connection. The value used to divide the network at this time is called the subnet mask.

TCP/IP

Abbreviation for Transmission Control Protocol/Internet Protocol. This is the standard internet protocol.

This protocol is a set of rules and agreements governing data communications between computers.

WEP

Abbreviation for Wired Equivalent Privacy. This is a method for encrypting communication data. The encryption key is created and notified only to the communicating user, so the communication data cannot be decrypted by a third party.

Troubleshooting

Check the following points once more before requesting repair.

Symptom	Checkpoint
The image from the computer does not appear.	<ul style="list-style-type: none">• Is the external video output of the laptop computer set correctly? (When the [Fn] and [F3] keys are pressed at the same time, the external output setting may change for some computer models. Refer to the user's manual supplied with the computer.)
The computer does not recognize the wireless card.	<ul style="list-style-type: none">• Is the wireless card inserted firmly all the way into the PC card slot of the computer?• Has the driver been installed?• Was the driver installed before inserting the wireless card?• Are there sufficient IRQ (interrupt signal) numbers? (Refer to the Windows Online Help.)
The transfer rate is slow.	<ul style="list-style-type: none">• The transfer rate may be slower in some operating environments (depending on such factors as the location, radio signal conditions or distance).• When WEP is set the image data is converted, so transfer takes time.
Image display is slow in live mode.	<ul style="list-style-type: none">• Is the computer CPU speed slow? Live mode depends largely upon the computer CPU performance.• When using Windows XP/2000, the speed may drop significantly if the user does not have administrator authority.
The display cannot be located on the connection list of Wireless Manager ME.	<ul style="list-style-type: none">• Check if the computer and the display are located too far apart, or if some object is obstructing the radio waves.• Check that the IP address and the subnet mask are set correctly.• Is TCP/IP installed in the computer?• Does the WEP setting match with the display? Communication is not possible if the WEP function is set when using a wireless card other than the optional card or when using an access point. In these cases turn off the WEP function.• In [Infrastructure] mode, set the same [SSID] for the display and the computer as that of the access point used. The [SSID] uses alphanumeric characters (case sensitive). In addition, check that the computer control function that allows communication with access points is disabled.• In [802.11 AdHoc (Peer to Peer)] mode, set the same SSID for the display and the computer. The SSID is case sensitive.• Is a network device other than the wireless card enabled? Check the Windows Device Manager.• Is proxy-client software active? Disable this software when communicating with the display.• Are you running a security program that contains a personal firewall function? Before communicating data using the display, either close the software or set up an exemption.
The Wireless Manager ME color display is strange and characters are difficult to read.	<ul style="list-style-type: none">• Right-click an empty location on the desktop and select [Properties]. Then, open the [Settings] tab of the [Display Properties] window and set [Color quality] to [Medium (16 bit)] or higher.

Trademarks

- Windows is a trademark or registered trademark of U.S. Microsoft Corporation in the U.S. and other countries.
- Other company names, product names or other names noted in this manual are trademarks or registered trademarks of the respective companies. Note that ® and TM marks are not indicated in the text of this manual.

Notes:

- Unauthorized use or reproduction of part or all of this product software and manuals is strictly prohibited.
- Panasonic cannot be held liable for any effects resulting from the use of this product software and manuals.
- Panasonic reserves the right to revise this product software specifications and manual contents without notice.

© 2004 Matsushita Electric Industrial Co., Ltd. All Rights Reserved.

Panasonic Broadcast & Television Systems Company

Unit of Matsushita Electric Corporation of America

Executive Office:

One Panasonic Way 4E-7, Secaucus, NJ 07094 (201) 348-7000

EASTERN ZONE: One Panasonic Way 4E-7 Secaucus, NJ 07094 (201) 348-7621

Mid-Atlantic/New England : One Panasonic Way 4E-7 Secaucus, NJ 07094 (201) 348-7621

Southeast Region : 1225 Northbrook Parkway, Ste 1-160 Swanee GA 30024 (770)338-6835

Central Region : 1707 N Randall Road E1-C-1, Elgin, IL 60123 (847)468-5200

WESTERN ZONE: 3330 Cahuenga Blvd W., Los Angeles, CA 90068 (323) 436-3500

Dallas Region : 6226 Abington Way, Houston, TX 77008 (713) 802-2726

No. CA/Northwest Region : 5870 Stone Ridge, #3, Pleasanton, CA (925) 416-5108

Government Marketing Department: 52 West Gude Drive, Rockville, MD 20850 (301) 738-3840