

# 6220

Requires a version of Windows®



Windows 2000 SP4  
Windows XP SP2 (32-bit)  
Windows Vista (x86)  
Windows Vista (x64)

12 Channel • 16-Bit •  $\pm 10$  V • Ethernet



***High-speed, Voltage Input Module***



372737A-01

1172-0903 rev 1.0

**Iotech**  
25971 Cannon Road  
Cleveland, OH 44146-1833

(440) 439-4091  
Fax: (440) 439-4093  
sales@iotech.com  
productsupport@iotech.com  
**www.iotech.com**

## Warranty Information

Your IOTech warranty is as stated on the *product warranty card*. You may contact IOTech by phone, fax machine, or e-mail in regard to warranty-related issues.  
Phone: (440) 439-4091, fax: (440) 439-4093, e-mail: sales@iotech.com

## Limitation of Liability

IOTech cannot be held liable for any damages resulting from the use or misuse of this product.

## Copyright, Trademark, and Licensing Notice

All IOTech documentation, software, and hardware are copyright with all rights reserved. No part of this product may be copied, reproduced or transmitted by any mechanical, photographic, electronic, or other method without IOTech's prior written consent. IOTech product names are trademarked; other product names, as applicable, are trademarks of their respective holders. All supplied IOTech software (including miscellaneous support files, drivers, and sample programs) may only be used on one installation. You may make archival backup copies.

## CE Notice



Many IOTech products carry the CE marker indicating they comply with the safety and emissions standards of the European Community. When applicable these products have a Declaration of Conformity stating which specifications and operating conditions apply. You can view our Declarations of Conformity at [www.iotech.com/CE](http://www.iotech.com/CE)

## Warnings, Cautions, Notes, and Tips



Refer all service to qualified personnel. This caution symbol warns of possible personal injury or equipment damage under noted conditions. Follow all safety standards of professional practice and the recommendations in this manual. Using this equipment in ways other than described in this manual can present serious safety hazards or cause equipment damage.



This warning symbol is used in this manual or on the equipment to warn of possible injury or death from electrical shock under noted conditions.



This ESD caution symbol urges proper handling of equipment or components sensitive to damage from electrostatic discharge. Proper handling guidelines include the use of grounded anti-static mats and wrist straps, ESD-protective bags and cartons, and related procedures.



This symbol indicates the message is important, but is not of a Warning or Caution category. These notes can be of great benefit to the user, and should be read.



In this manual, the book symbol always precedes the words "Reference Note." This type of note identifies the location of additional information that may prove helpful. References may be made to other chapters or other documentation.



Tips provide advice that may save time during a procedure, or help to clarify an issue. Tips may include additional reference.

## Specifications and Calibration

Specifications are subject to change without notice. Significant changes will be addressed in an addendum or revision to the manual. As applicable, IOTech calibrates its hardware to published specifications. Periodic hardware calibration is not covered under the warranty and must be performed by qualified personnel as specified in this manual. Improper calibration procedures may void the warranty.

# Table of Contents

---

## Quick Start

### Chapter 1 – General Information

- Introduction* ..... 1-1
- Front Panel* ..... 1-1
- Rear Panel* ..... 1-2
- Synchronization* ..... 1-3
- Stacking Plate and Handle Options* ..... 1-4

### Chapter 2 – Block Diagram

### Chapter 3 – Analog Input (note 1)

### Chapter 4 – CE Compliance and Noise Considerations

- Overview* ..... 4-1
- CE Standards and Directives* ..... 4-1
- Safety Conditions* ..... 4-2
- Emissions/Immunity Conditions* ..... 4-3
- CE Rules of Thumb for 6220* ..... 4-3
- Noise Considerations* ..... 4-4

### Chapter 5 – Software, IOtech Encore

### Chapter 6 – Product Care and Customer Support

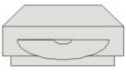
- Electrostatic Discharge (ESD), Handling Notice* ..... 6-1
- Product Care* ..... 6-1
- The ReadMe File and the Install CD-ROM* ..... 6-2
- Customer Support* ..... 6-2

### Chapter 7 – Specifications, IOtech 6220

<sup>1</sup> For information regarding digital, refer to the *Digital I/O* section of the *Specifications* chapter.

## 12-Channel, 16-Bit, ±10V, Ethernet, High-speed Voltage Input Module

Requires a version of Windows®



Windows 2000 SP4  
 Windows XP SP2 (32-bit)  
 Windows Vista (x86)  
 Windows Vista (x64)

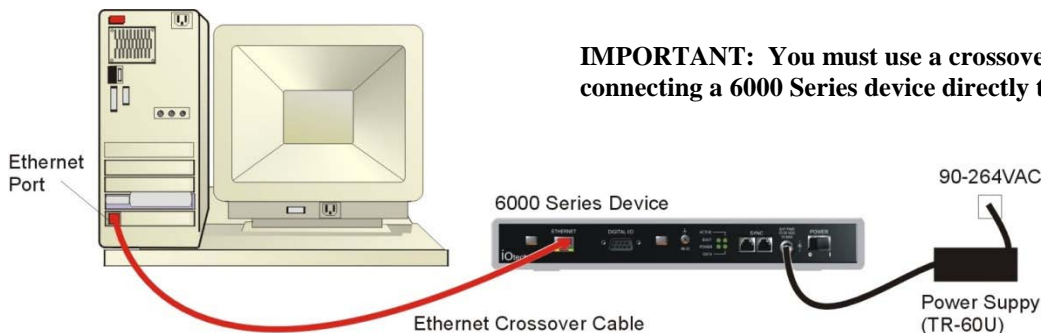


Before you get started verify that you have the following items and meet or exceed the minimum requirements listed.

- IOtech 6220
- TR-60U Power Supply and Cable
- Ethernet Crossover Cable\*
- IOtech Encore Installation CD
- PC: Minimum Requirements:
  - CPU: Intel® Pentium® 4, 2.4 GHz or equivalent
  - RAM: 1 GB
  - Monitor: 1024 by 768 screen resolution
- PC: Recommended:
  - CPU: Intel® Core™ 2 Duo Family
  - RAM: 2+ GB
  - Monitor: 1024 by 768 screen resolution
- OS: Windows 2000 SP4 / XP SP2 (32-bit) / Vista (x86 or x64)

\*An Ethernet crossover cable (provided) should only be used for direct network connections. Standard Ethernet cables should be used for hub/switch connections.

## Step 1 - Connect the 6220 to the Ethernet and to the Power Supply



**IMPORTANT:** You must use a crossover cable if connecting a 6000 Series device directly to a PC.

In this scenario an IOtech 6220 is connected directly to an Ethernet port on a host computer.

1. Connect the Ethernet cable to the Ethernet jack on the 6220. **If connecting directly to the PC, as indicated above (i.e., instead of connecting to a network hub) you must use an Ethernet crossover cable.**
2. Connect the other end of the Ethernet cable to the Ethernet jack on the host computer or network hub.
3. Connect the power supply cable from the TR-60U Power Supply to the External Power connector on the 6220.
4. Connect the TR-60U to a standard AC outlet, and set the rear panel Power Switch to “I” to turn the unit on. The 6220 Power LED will light up.
5. If Encore software is already installed, reboot the PC and skip to Step 3; otherwise proceed to Step 2, *Install Encore Software.*

## Step 2 - Install Encore Software

1. Close all running applications on the host PC.
2. Insert the *Encore CD* into your CD-ROM drive and wait for the CD to auto-run. An *Opening Screen* will appear. If AutoRun is disabled: (a) *right-click* Windows Start menu, (b) select *Explore*, (c) navigate to the CD ROM drive, and (d) *double-click* Autorun.exe
3. Follow the screen prompts.

## Step 3 – Use Encore to Configure the 6220

1. Run the Encore software application (**Start>> All Programs>>IOtech>>Encore**).
  2. In Encore's main toolbar, click the **Hardware Configuration** button. The **Hardware Configuration** window will open.
  3. Select your device from the **Detected Devices** panel.
  4. Click the top arrow button to set your device as a **Project Device**.
  5. In Encore's **Hardware Configuration** window, look in the **Device Information** panel to verify that your 6220 has an **IP Address**. Note the following points regarding common connection scenarios. Both points assume that you have not changed the 6220 from its default setting of **Obtain an IP Address Automatically**.
    - **Direct Connect** – When a 6000 Series device is connected directly (via crossover cable or hub/switch) to a host PC with no fixed IP Address, you will need to reboot the PC and the device to allow a default IP Address to be set. This setting of an IP Address is automatic. No other action is needed. (See note.)
    - **Network Connect (Common scenario using existing network with DHCP server)** – A 6000 Series device will automatically request and received an IP Address. No user action is needed. (See note.)
- Note** - Encore will provide a message to indicate an IP Address problem if one exists. If you receive such a message, consult your network administrator and also check Encore's *Comprehensive Help* file (via the **Help** pull-down menu on Encore's main window). Look at the topic: *Connection Scenarios and IP Addresses* (under *Configuring Hardware >>Hardware Setup*).
6. Click the **Next** button (at the bottom of the **Hardware Configuration** dialog to access the **Acquisition Setup** tab.
  7. Configure and enable channels as desired for your application. For detailed information refer to Encore's *Comprehensive Help* file (via the **Help** pull-down menu on Encore's main window).



**Make sure that each computer and each device on the dedicated network has a unique IP address.**

## Step 4 - Connect Signal Lines

CAUTION	
	<b>Turn off power to the system devices and externally connected equipment before connecting cables. Electric shock or damage to equipment can result even under low-voltage conditions.</b>
	<b>Take ESD precautions (packaging, proper handling, grounded wrist strap, etc.)</b>

The 6220 has 12 voltage analog input channels (CH1 through CH12) via front panel BNC connectors and 8 digital I/O lines via a rear panel DB9 connector.

Prior to making signal connections review the *Specifications* chapter of your 6220 user's manual to ensure that the input signals do not exceed the specified limits. After you have installed Encore you can access the pdf manual by navigating from the host PC's Windows Start Menu as follows (location shown is the default):

**Start>>All Programs>>IOtech>>6000 Series>>6220 User Manual**



**Reference Note:** The Encore software application includes *Context-sensitive Help*, *Comprehensive Help*, a *Quick Start Video Tutorial*, and a *Getting Started* pdf.

**IOtech** 25971 Cannon Road, Cleveland, OH 44146-1833  
Phone: (440) 439-4091, Fax: (440) 439-4093 E-mail: sales@iotech.com  
E-mail: productsupport@iotech.com Internet: www.iotech.com



325132A-01

Printed in Hungary

Introduction ..... 1-1  
Front Panel ..... 1-1  
Rear Panel ..... 1-2  
Synchronization ..... 1-3  
Stacking Plate and Handle Options ..... 1-4

## Introduction

IOtech 6220 is a twelve-channel, 16-bit resolution voltage measurement device that connects to a host PC's Ethernet port and can be synchronized with other IOtech 6000 series devices.

Signal input can be grounded or floating and is made via front panel BNC connectors. Each of the twelve channels has its own internal circuitry that keeps the voltage source within the common-mode range. For more information about the common-mode voltage range, refer to the *Specifications* chapter.

The hardware provides the signal conditioning and acquisition engine, and the software defines the specific configuration and analysis aspects of the system.

## Front Panel

The front panel is populated with twelve BNC connectors for voltage signal input. The center pin is positive (+) analog input. The outer shell is negative (-) analog input. Additional information is included in chapters 3 and 7.

---

## Rear Panel



The following items reside on the rear panel, from left to right: 1<sup>st</sup> cable tie mount, Ethernet jack, DB9-Digital I/O port, 2<sup>nd</sup> cable tie mount, #6-32 chassis ground screw, four status LEDs, two synchronization jacks, a power input jack, and a power switch. A description of each follows.

**CABLE TIE MOUNTS:** Two cable tie mounts are present to provide for strain relief of cables.

**ETHERNET:** The 10/100BaseT Ethernet port can connect to the Ethernet port of the host PC, or to an Ethernet network. The Ethernet connector has two built in LEDs that indicate traffic flow on the network. Refer to *Accessories* in the *Specifications* chapter for Ethernet cables available from IOtech.



When connecting the unit directly to a PC (i.e., when not connecting to a network hub) you will need to use an Ethernet crossover cable.

Ethernet cable length must be <10m (32.8 ft) in order for the system to be CE Compliant.

**DIGITAL I/O:** Eight digital I/O lines are accessible via a 9-pin, female DSub connector. Additional information is included in chapters 3 and 7.

**GROUND (#6-32):**Provides a connection point for Chassis Ground via use of a #6-32 machine screw.

**STATUS LEDES:**

- |               |   |
|---------------|---|
| <b>Power</b>  | 'ON' when the device is connected to a sufficient power source, and the power switch is in the 'I' (On) position.   |
| <b>Boot</b>   | During initial power up, the Boot light will be On to signal the first stage boot process. When this has completed successfully, the Boot light will remain Off. If an internal error is detected during this first stage boot process, this light will be blinking. Contact IOtech to arrange repair service.  |
| <b>Active</b> | During initial power up, the Active light will be Off during the boot process, including network configuration. The process will complete with a fast Blink, and then steady On condition. With both the Power and Active lights On, the device is in the Ready state. After this, the Active light will signal communications with a host computer at a slower blink rate. |
| <b>Data</b>   | The Data light will be On any time the device is acquiring channel data that is available to the host PC control software.  |

---

**Note:** After turning on the device, it can take up to 2 minutes to reach ready state, depending on network settings. This can be monitored by the LED sequence:  
**Power Light On → Boot Light On then Off → Active Light Off, then Blinking, then On.**

**SYNC:** Two "synchronization ports" provide a means of synchronizing units regard to pre-trigger data and post-trigger scanning. Note that each 6000 Series device is capable of being designated as a Master Unit, Slave Unit, or Terminating Slave Unit. The assignment is made in Encore. Refer to the following section, *Synchronization*, for details. Refer to *Accessories* in the *Specifications* chapter for SYNC cables available from IOtech.



**Up to nine units can be synchronized. The total combined length of the SYNC cables is not to exceed 2.438m (8 ft).**

**POWER INPUT:** +19 VDC to +30 VDC, through a connector on the chassis. Power is typically supplied to the device via a TR-60U, 24VDC universal power supply.

**POWER SWITCH:** A switch with a "0" label for Power Off, and a "I" for Power On.

## Synchronization

To synchronize from two to nine 6000 Series devices, link them together with synchronization cables as indicated in the example figure. Note that the first device (relative to the circuit) will be the **Master**. The last device connected will be the **Terminating Slave**. Thus the synchronized devices must proceed sequentially from the Master to Terminating Slave, as indicated in the figures.

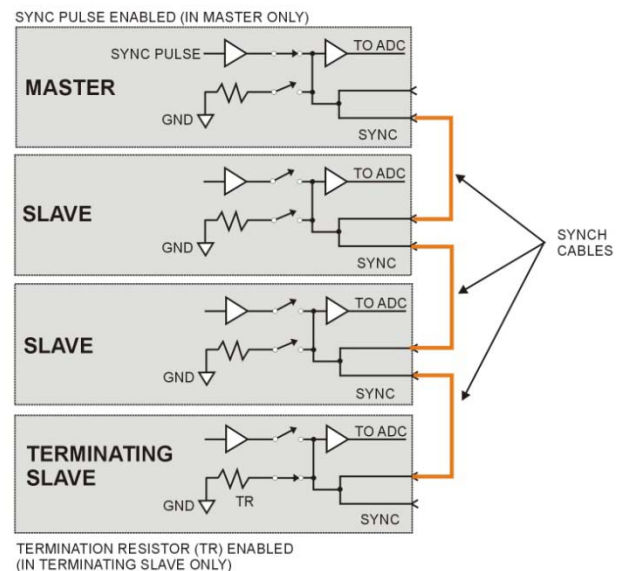


After physically linking the devices via the sync cables, they must still be configured as a “Synchronized Device Group” in the Encore software. To do this, use the **Synchronize Devices** page of Encore’s **Hardware Setup** tab.

Each Synchronized Group consists of one Master Device and at least one Slave Device. By default, the first 6000 Series device added to the Synchronization Group will be the Master and the last device added to the group will be the Terminating Slave.

Encore’s **Synchronized Device Group Configuration** panel includes a pull-down list which allows you to select the device that you want to have function as **Master** and the one you want to function as **Terminating Slave**, should this be different than the default settings.

Encore will display a *Synchronization Error* icon if it detects that a necessary sync cable is missing or not properly connected.



Up to nine units can be synchronized. The total combined length of the SYNC cables is not to exceed 2.438m (8 ft).

**Unplug sync cables from devices that are not intended to be part of a “Synchronized Device Group.” Leaving a sync cable connected to an independent device can lead to errors.**

**Leaving an un-terminated sync cable on a synchronized device can lead to errors.**



**Reference Note:** For detailed information refer to the Encore software’s *Comprehensive Help*. You can access the Help from within Encore. After doing so, navigate to the synchronization related topic as follows from the Help’s Contents panel:

**Configuring Hardware>>Hardware Setup>>Synchronizing Devices.**



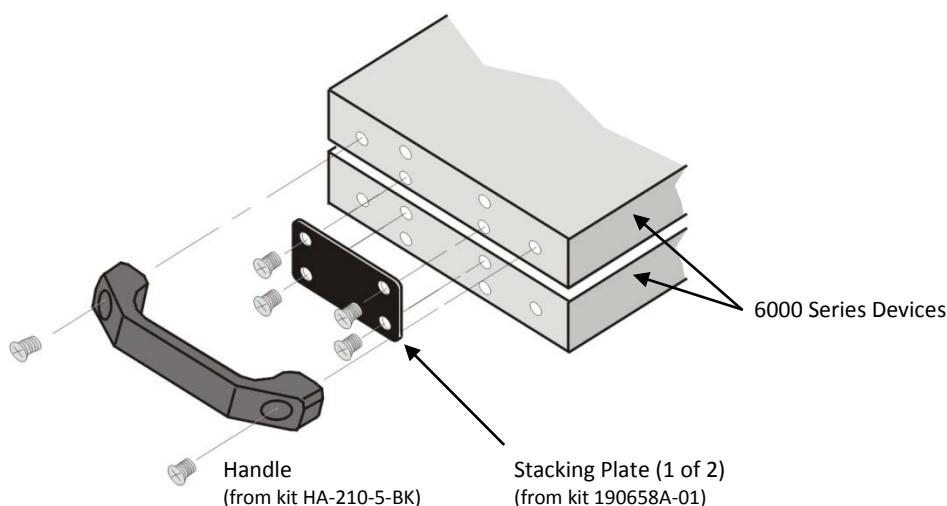
---

## Stacking Plate and Handle Options

IOtech 6000 Series device chassis are equipped with feet (on the lower panel) and dimples (on the upper panel) to allow for quick stacking of units.

A rigid securing of two or more units together is possible with the use of optional stacking plate kits (190658A-01). Each kit contains two stacking plates and eight screws (8-32 x .500 in., Phillips Flat, 82 Degree). If needed, additional kits can be used to stack and secure more devices.

An optional handle kit (HA-210-5-BK) is available to provide a convenient way of carrying a single 6000 Series device or a secured stacked set of devices. Each handle kit includes one black molded plastic handle and two mounting screws (1/4-20 x 7/8 in., Phillips Pan Head).



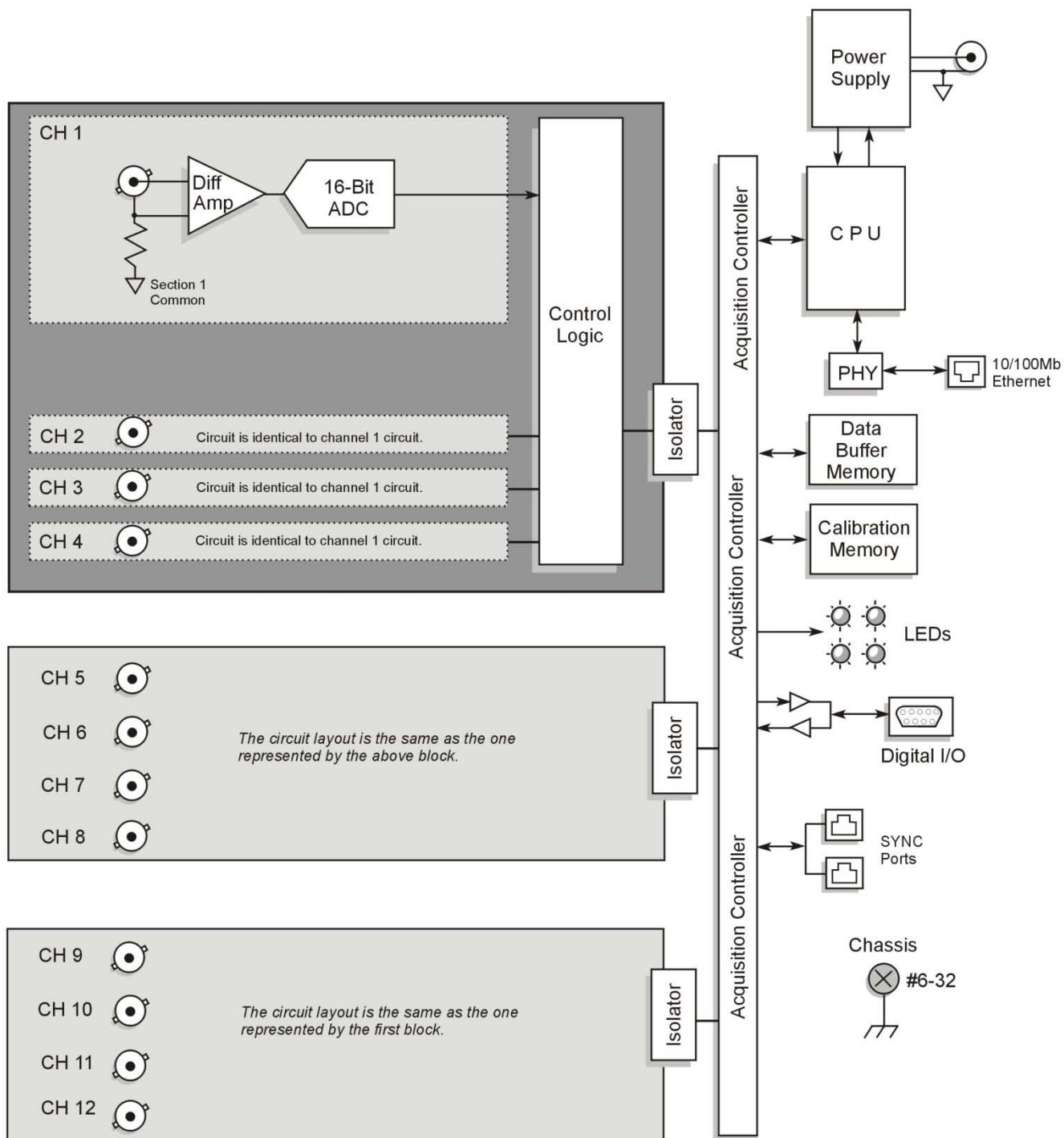
### To attach two or more 6000 Series devices to each other using stacking plates:

1. Align the bottom two holes of a plate (hole tapers facing out) with the top two center holes of the lower 6000 Series device.
2. Secure the plate with two 8-32 x .500 in. Phillips screws (provided). Tighten the screws snug, but do not over-tighten.
3. Repeat steps 1 and 2 for the second plate, on the other side of the 6000 Series device.
4. Attach the second 6000 Series device using the remaining four screws.
5. Repeat these steps with other stacking plate kits and devices, as applicable.

### To mount a handle:

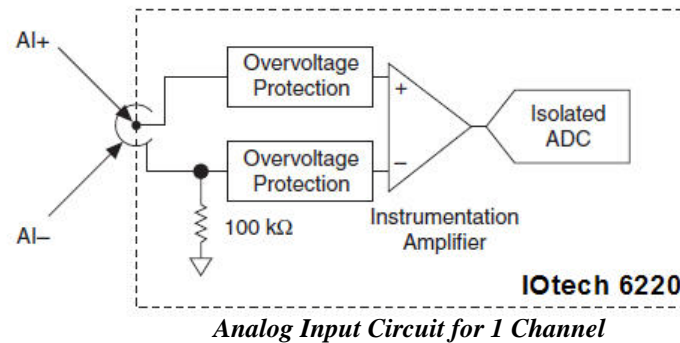
Attach the handle to a 6000 Series device using the two outer holes on the device and the two 1/4-20 x 7/8 in., Phillips Pan Head screws (provided). Tighten the screws snug, but do not over-tighten.

The 12 analog input channels of the 6220 are set up in three distinct isolated sections. Channels 1 through 4 share 'section 1 common' and an isolator; channels 5 through 8 share 'section 2 common' and an isolator; and channels 9 through 12 share 'section 3 common' and an isolator.



6220 Block Diagram

For each channel, the 6220 includes a BNC with positive center pin and negative shell, overvoltage protection, an amplifier, an isolated analog-to-digital converter (ADC), and a resistor. The resistor prevents the input voltage from drifting outside the common-mode range.



As indicated in the figure, each channel is independently protected from overvoltage. The specifications chapter includes information about overvoltage protection.

The channels share common ground as follows:

- Channels 1, 2, 3, 4 – share a common ground.
- Channels 5, 6, 7, 8 – share a common ground
- Channels 9, 10, 11, 12 – share a common ground.

The incoming analog signal on each channel is buffered and conditioned by the instrumentation amplifier and is then sampled by a channel-dedicated 16-bit ADC. Track-and-hold amplifiers [one for each channel] allow you to sample all channels simultaneously.

Overview ..... 4-1  
Safety Conditions ..... 4-1  
Emissions/Immunity Conditions ..... 4-2  
CE Rules of Thumb ..... 4-2  
Noise Considerations ..... 4-3

## Overview



CE compliant products bear the “CE” mark and include a *Declaration of Conformity* stating the particular specifications and conditions that apply. The test records and supporting documentation that validate the compliance are kept on file at the factory.

The standards are published in the *Official Journal of European Union* under direction of CENELEC (*European Committee for Electrotechnical Standardization*). The specific standards relevant to data acquisition equipment are listed on the product’s *Declaration of Conformity*.

This product meets the essential requirements of applicable European directives, as amended for CE markings in accordance with the product family standard for:

- electrical equipment for measurement, control, and laboratory use
- immunity requirements for equipment used in controlled EM environments

Refer to this product’s Declaration of Conformity (DoC) for any additional regulatory compliance information. To obtain the DoC for this product, visit [iotech.com/CE](http://iotech.com/CE)

---

## Safety Conditions

Users must comply with all relevant safety conditions as stated in the user’s manual and in the pertinent *Declarations of Conformity*. Both the documentation and the associated hardware make use of the following Warning and Caution symbols. If you see any of these symbols on a product or in a document, carefully read the related information and be alert to the possibility of personal injury and/or equipment damage.



This WARNING symbol is used in documentation and/or on hardware to warn of possible injury or death from electrical shock under noted conditions.



This WARNING/CAUTION symbol is used to warn of possible personal injury or equipment damage under noted conditions.



This CAUTION symbol warns of possible equipment damage due to electrostatic discharge. The discharge of static electricity can damage some electronic components. Semiconductor devices are especially susceptible to ESD damage. You should always handle components carefully, and you should never touch connector pins or circuit components unless you are following ESD guidelines in an appropriate ESD-controlled area. Such guidelines include the use of properly grounded mats and wrist straps, ESD bags and cartons, and related procedures.



Unless otherwise stated our data acquisition products contain no user-serviceable parts. Only qualified personnel are to provide service to the devices.

The specific safety conditions for CE compliance vary by product; but general safety conditions include the following bulleted items:

- The operator must observe all safety cautions and operating conditions specified in the documentation for all hardware used.
- The host computer and all connected equipment must be CE compliant.
- All power must be off to the device and externally connected equipment before internal access to the device is permitted.
- Ensure that isolation voltage ratings do not exceed documented voltage limits for power and signal inputs. All wire insulation and terminal blocks in the system must be rated for the isolation voltage in use. Voltages above 30 Vrms or  $\pm 60$  VDC must not be applied if any condensation has formed on the device.
- Current and power use must not exceed specifications. Do not defeat fuses or other over-current protection.

---

## **Emissions/Immunity Conditions**

The specific immunity conditions for CE compliance vary by product. General immunity conditions include the following:

- Cables must be shielded, braid-type with metal-shelled connectors. Input terminal connections are to be made with shielded wire. The shield should be connected to the chassis ground with the hardware provided.
- The host computer must be properly grounded.
- In low-level analog applications some inaccuracy is to be expected when I/O leads are exposed to RF fields or transients, as noted on the *Declaration of Conformity*, if applicable to the device.

---

## **CE Rules of Thumb**

The IOtech device is CE Compliant at the time it leaves the factory and should remain in compliance as long as the conditions stated on the *Declaration of Conformity* continue to be met.

A few general rules of thumb:

- Use short cables.
- When assembling or disassembling components, take ESD precautions, including the use of grounded wrist straps.
- Ensure that the host computer is CE Compliant.
- Review the most recent *Declaration of Conformity*.
- Ensure all system components are properly grounded.

---

## **Noise Considerations**

Controlling electrical noise is imperative because it can present problems even with the best measurement equipment. Most laboratory and industrial environments suffer from multiple sources of electrical noise. For example, AC power lines, heavy equipment (particularly if turned on and off frequently), local radio stations, and electronic equipment can create noise in a multitude of frequency ranges.

Local radio stations are a source of high frequency noise, while computers and other electronic equipment can create noise in all frequency ranges. Creating a completely noise-free environment for test and measurement is seldom practical. Fortunately, simple techniques such as using shielded/twisted pair wires, filtering, and differential voltage measurement are available for controlling the noise in our measurements. Some techniques prevent noise from entering the system; other techniques remove noise from the signal.

While many techniques for controlling noise in signals provide a means of removing the noise that is already present, the preferred solution is to prevent the occurrence of noise in the signal in the first place.

The following practices, some of which are required for CE compliance, should be employed to minimize noise.

- **Make a solid earth ground connection.** Using insulated, low resistance wire, connect the chassis to solid earth ground. This practice accomplishes the following:
  - (a) keeps radiated emissions low by keeping the chassis electrically quiet,
  - (b) keeps potential common-mode voltages low,
  - (c) improves user safety, and
  - (d) provides a safe path for Electrostatic Discharge energy back to earth ground.
- **Minimize ambient EMI.** The lower the ambient EMI, the better. Sources of electromagnetic interference include solenoids, motors, computer equipment, high power distribution wiring, etc.
- **Distance cables.** Route signal cables away from Ethernet lines, Mains and other high voltage cables and equipment to minimize signal interference from radiated noise.

Encore is interactive measurement software that offers a powerful set of features in an intuitive package. It is a user friendly application that can measure a wide variety of signals, including sound, vibration, and temperature. With Encore you can acquire, generate, analyze, compare, log, and play back data. No knowledge of programming is required.

## **Features**

- Easily configure 6000 Series hardware
- Data streaming & playback
- Comprehensive report generation
- Drag and drop directly into Excel<sup>®</sup>
- Built-in analysis including FFT

We recommend that you watch the Encore *Quick Start Video Tutorial* prior to using Encore. After watching the video you should be able to set up and run an application. You can use Encore's *Comprehensive Help* to view details about various aspects of the application. *Comprehensive Help* includes a search function, allowing you to quickly look up the subject of interest.

Once you have installed Encore you can navigate from the host PC's Windows' Desktop to locate various documents, as follows:

```
Start>>All Programs>>IOtech>>Encore
    >>Comprehensive Help
    >>Quick Start Video Tutorial
    >>Getting Started Manual
    >>Readme
```

Should you have questions or need support you can contact IOtech through one of the means provided on the front cover of this manual.

**Electrostatic Discharge (ESD) Handling Notice..... 6-1**  
**Product Care ..... 6-1**  
**The ReadMe File and the Install CD-ROM ..... 6-2**  
**Customer Support ..... 6-2**

## Electrostatic Discharge (ESD) Handling Notice



The discharge of static electricity can damage some electronic components. Semiconductor devices are especially susceptible to ESD damage. You should always handle components carefully, and you should never touch connector pins or circuit components unless you are following ESD guidelines in an appropriate ESD-controlled area. Such guidelines include the use of properly grounded mats and wrist straps, ESD bags and cartons, and related procedures.

---

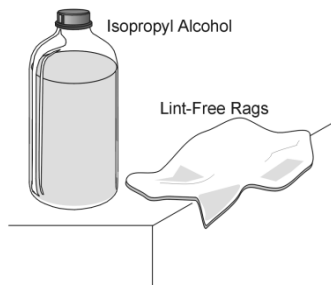
## Product Care

IOtech 6000 series devices are essentially maintenance free and require only a minimal amount of care. They should be treated much like any other high-tech piece of equipment. In general:

- Operate the units in ventilated and relatively dust-free environments.
- Keep the units clear of harsh chemicals and abrasive elements.
- Avoid exposing the products to extreme heat; for example, avoid setting the units near boilers and furnaces.
- Avoid extreme shock and vibration.
- Avoid subjecting the units to liquids and extremely fine air particulate, such as silica dust.
- Never open the unit. The unit should only be opened by qualified service technicians.

A “common-sense” approach to handling acquisition components will go a long way in protecting them from inadvertent damage.

Note that you can use lint-free rags and Isopropyl Alcohol (Rubbing Alcohol) to clean the outer surfaces of an IOtech 6000 series device.





---

## The Readme File and the Install CD-ROM

The Install CD-ROM includes a ReadMe file. The ReadMe may contain late-breaking information that does not appear in other documentation. During installation you should review the ReadMe file when prompted to by the program.

The Install CD-ROM includes:

- Windows drivers
- Encore, interactive measurement software\*
- User documentation in Adobe® PDF format

---

## Customer Support

### If you need to report problems or request product support . . .

**Note:** Please do not return any equipment to the factory unless it has an RMA number (Return Merchandise Authorization number). RMA numbers are issued by the factory.

To report problems or request support, contact our Applications Department. Contact information follows shortly. When you contact us, please have the following information available, as applicable:

- Hardware model numbers and software version numbers.
- Operating system, type of computer, and device information in the Windows control panel, such as interrupts and address settings for our hardware and others.
- Results of any tests.
- Hardware setup and software configuration.
- Information on input signals, including voltage ranges, signal impedance ranges, noise content, and common mode voltages.
- The name of a contact person from your company who can discuss the problems encountered.
- Instructions for return shipping.
- All troubleshooting notes and comments on tests performed, and all problem-related conditions.

**Note:** Before calling for assistance, take a few minutes to read all parts of the manual that may be relevant to the problem. Also, please review the troubleshooting material.

You can reach IOtech by one of the following means:

Phone: **(440) 439-4091**  
Fax: **(440) 439-4093**  
E-mail Product Information/Sales: **sales@iotech.com**  
E-mail Technical Support/Applications Department: **productsupport@iotech.com**  
Internet: **www.iotech.com**  
Mail: **IOtech • 25971 Cannon Road • Cleveland, Ohio 44146-1833**

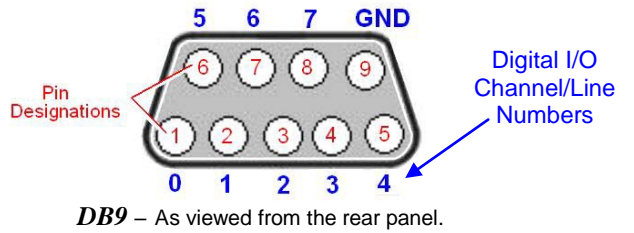
All equipment returned to the manufacturer must have an RMA (Return Material Authorization) number. You can obtain an RMA number from our Applications Department. When returning the equipment, use the original shipping container (or equivalent) to prevent damage. Put the RMA number on your shipping label to ensure that your shipment will be handled properly. After receiving your equipment, we will fax a confirmation form that summarizes the charges (if applicable) and expected return date.

\* Encore includes a *Comprehensive Help* (.chm), *Context-sensitive Help* (.chm), a *Getting Started* manual(.pdf) and a *Quick Start Video Tutorial* (.wmv).



## Digital I/O

- Channels:** 8 Digital I/O, programmable as a single port, or as individual lines
- Power-up mode:** Inputs pulled low
- Connector:** DB-9 female (*figure*)



### Programmable Input Scanning Modes:

- Asynchronous: Under program control at any time relative to analog scanning.
- Synchronous: Data captured synchronously with the analog channels.

### Input Levels:

- Low: 0 to +0.8V
- High: +2.0V to +5.0V

**Input Voltage Range without damage:** -0.6V to +5.6V max

**Input pull-down resistor:** 10k $\Omega$

**Output voltage range:** 0 to +3.0V  
(may be externally pulled up to 5.6V without damage)

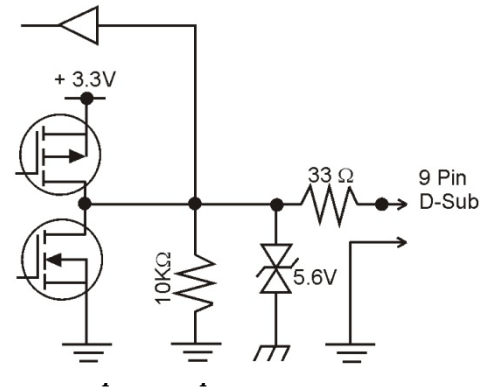
**Output resistance:** 40 $\Omega$

**Output Levels:** (see 6000 Series Digital Output graph below)

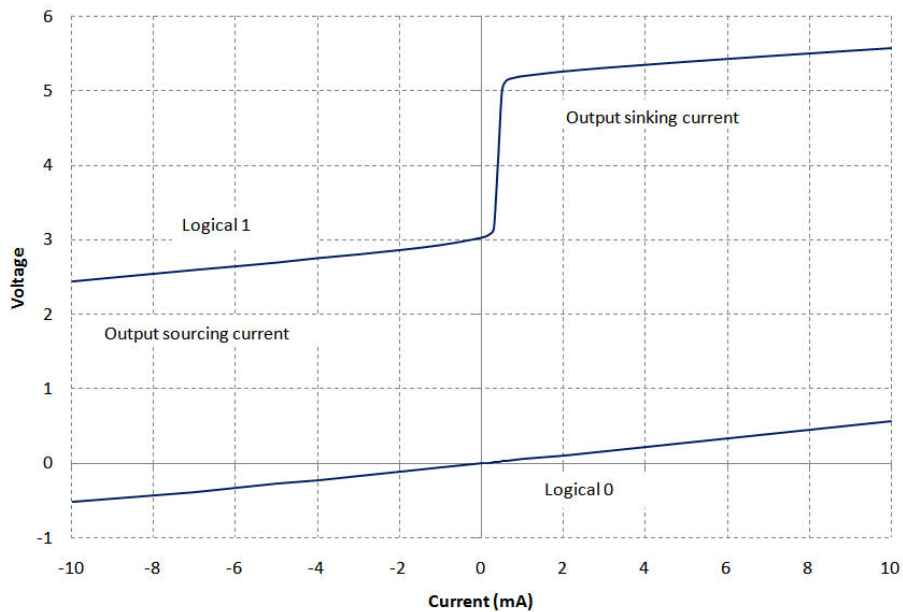
### Sampling:

1 MHz max continuous

**Output timing:** Outputs are always written asynchronously.



6000 Series Digital Output



### Power Consumption

5.5 W typ, 6W max  
24VDC @ 0.8A max

### Physical Characteristics

Weight ..... 1.36 Kg (3 lb)  
Dimensions ..... 276.9mm W x 169.8mm D x 30.5mm H  
(10.9" W x 6.685" D x 1.2"H)

### Environmental

The IOtech 6220 is intended for indoor use only but may be used outdoors if installed in a suitable enclosure.

Operating temperature ..... -40 to 50°C  
Storage temperature ..... -40 to 75°C  
Ingress protection ..... IP 40  
Operating humidity ..... 10 to 90% RH, noncondensing  
Storage humidity ..... 5 to 95% RH, noncondensing  
Maximum altitude ..... 2,000 m (6562 ft)  
Pollution Degree ..... 2

### Calibration

Calibration interval ..... 1 year  
Contact IOtech for information regarding calibration service.

**Note:** The above calibration information pertains to the IOtech 6220 hardware calibration, not to be confused with "user" or "software" calibration. When performing a "user" calibration via Encore (or other software) keep in mind that sample rate affects both gain and offset of the 6220, and therefore any "user" calibration should be performed at the same sample rate that is intended for measurements.

---

## Accessories

TR-60U	24VDC universal power supply
CA-1	120V IEC AC Mains cable (US)
CA-216	220V IEC Mains Cable (EU)
CA-74-1	RJ12 Shielded Cable, 6-Conductor, Sync, 0.3m (1ft) <sup>1</sup>
190658A-01	Stacking plate kit; includes: 2 stacking plates 8 screws (8-32x0.5in, Phillips Flat, 82 degree)
HA-210-5-BK:	Handle kit; Includes: 1 molded black plastic handle 2 screws (1/4-20x7/8in, Phillips Pan Head)
CA-192-7C	Ethernet Crossover Cable, 2.133m (7ft) <sup>2,3</sup>
CA-242	Ethernet Patch Cable, 0.457m (1.5ft) <sup>2</sup>
CA-242-7	Ethernet Patch Cable, 2.133m (7ft) <sup>2</sup>

### Cable Notes:

- <sup>1</sup> Up to nine units can be synchronized. The total combined length of the SYNC cables is not to exceed 2.438m (8 ft).
- <sup>2</sup> Ethernet cable length must be <10m (32.8 ft) in order for the system to be CE Compliant.
- <sup>3</sup> Ethernet crossover cables should only be used for direct network connections. In particular, attempting to connect a device to a Hub using a crossover cable may prevent that network link from functioning. Some modern routers have become an exception by including logic to detect the crossover cable and allow the network link to function.