



Wilcom EmbroideryStudio e3.0K Software Update

25 November 2013

This file contains notes on the Wilcom EmbroideryStudio e3.0K software update. This update is intended for installation with any released version (already installed) of Wilcom EmbroideryStudio e3.0. It contains all improvements and fixes contained in other interim updates, including e3.0H.

Contents

New & improved features in ES e3.0H.....	2
Updated Connection Manager.....	2
Other improvements	5
New & improved features in ES e3.0K.....	8
Runtime analyst feature.....	8
Outputting design information.....	11
Interface & usability improvements.....	15
Thread & fabric improvements.....	17
Lettering improvements	19
Stitching & color improvements	21
File handling improvements.....	23
Solving problems.....	24
Copyright	24
Contact	24

New & improved features in ES e3.0H

The main theme of the e3.0H software update was to enhance support for third-party machine connection. Specifically, Happy, ZSK and Brother machines. Other aims of this release include:

- Resolve issues associated with multi-language release.
- Improve machine connectivity by providing the ability to add named machines and define a network location for design retrieval.
- Fix other outstanding software issues unresolved at the time of last release.

Updated Connection Manager

EmbroideryStudio Connection Manager has been updated to provide a more flexible method of connection to different machines that appear as removable media or use a third-party application to connect to the machine and require files to be placed in a specific network location. Each machine, once set up, will only require a single click in order to send a design to the predefined folder on a network or PC.

Basic workflow

The basic workflow is as follows:

1. Set up a machine connection.
 - Each machine has a unique name and 'Quick Access' button.
 - Each machine can have a unique folder to which designs can be sent so they can be accessed from the machine control panel or third-party machine connection software.
2. Create a design.
3. Click the Quick Access button for the specific machine.
4. The design is sent to the specified folder.
5. Using the machine controller or third-party connection software, access the design from the network or PC folder.
6. Load or send the design.
7. Stitch the design on the machine.

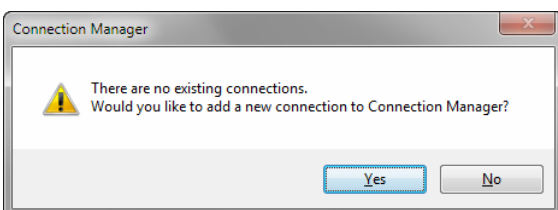
Sending a design for the first time

1. Click the **Connection Manager** icon on the **Standard** toolbar.



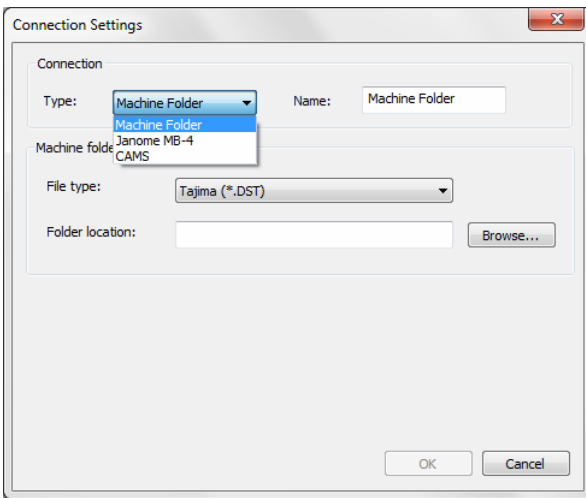
Alternatively, select **Setup > Connection Manager Setup**.

If no connections currently exist, the message appears:

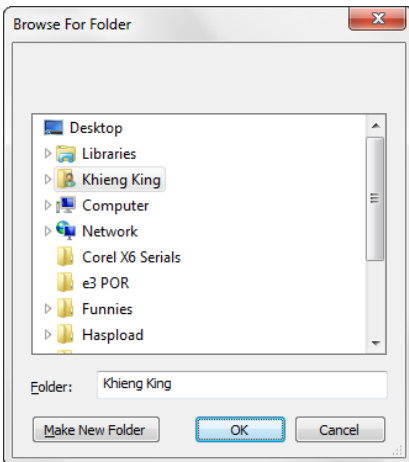


2. Click **Yes** to start setting up your connections.

The **Connection Settings** dialog opens.

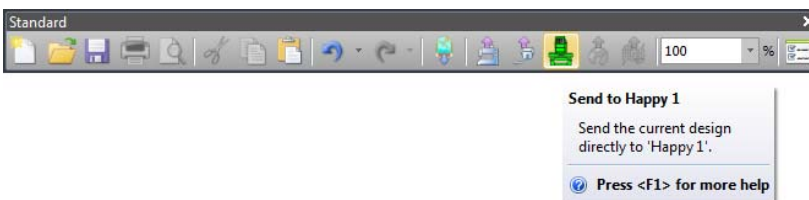


3. Select the connection type. Choose from:
 - Machine folder – e.g. Barudan DFS, HappyLink/LAN, Brother PR series and so on
 - Janome MB-4
 - CAMS (rhinestone placement machine)
4. Enter a unique machine name. This name identifies the Quick Access button.
5. Select the file type required by the machine.
6. Enter or browse to a file location on the network or the PC



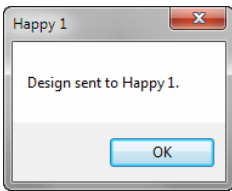
7. Click **OK** when complete.

The new machine will appear as a Quick Access button on the **Standard** toolbar



8. Click **Send** to send the currently open design to the specified machine folder.

A confirmation message is displayed.



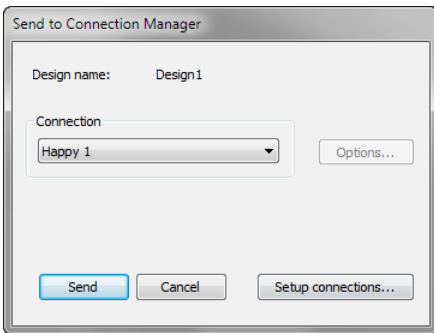
Setting up additional connections

1. Click the **Connection Manager** icon on the **Standard** toolbar.



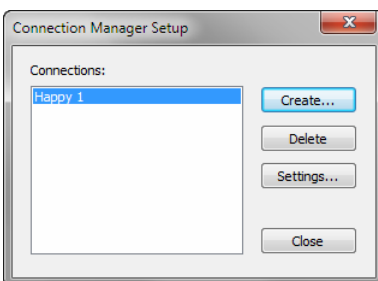
Alternatively, select **Setup > Connection Manager Setup**.

If a connection already exists, the **Send to Connection Manager** dialog opens.



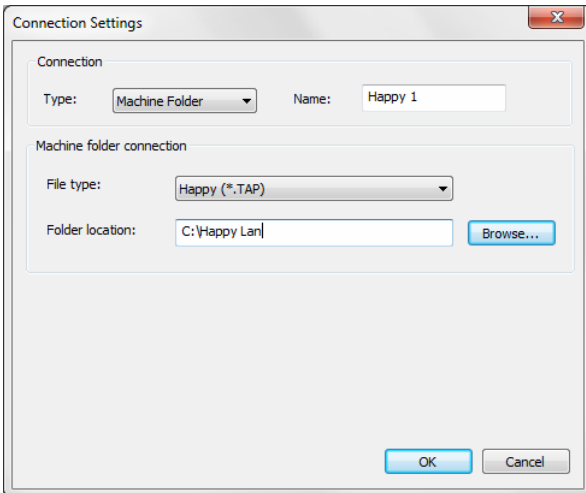
2. Select **Setup Connections**.

The **Connection Manager Setup** dialog opens.



3. Click **Create**.

The **Connection Settings** dialog opens.



- Repeat steps outlined above to set up another machine connection.

As more machines are created, more quick access buttons are added with unique colors for each.



A single click on a machine quick access button will send the current design to the predefined location for the selected machine.

Other improvements

The e3.0H also includes the following fixes and improvements.

Multi-language issues

Problem

Multi-language GUI problems

'My Product' for multi-languages

'Capture Design Bitmap' in French

German translation of Application Fabric dialog

'New from Template' fabric selection

Fabric selection in non-English languages

Resolution

A number of problems were reported with regards to truncations and faulty message strings in languages other than English. These have been resolved.

Previously, clicking an element on left hand pane of the 'My Product' dialog, when switched to languages other than English, did not load the corresponding page. This issue has been resolved.

If running ES in French language, the 'Capture Design Bitmap' dialog crashed the system. This issue has been resolved.

The Application Fabric dialog title has now been correctly translated as 'Applikations-Stoff'.

Some fabrics could not be selected in the 'New from Template' dialog when switched to languages other than English. This issue has been resolved.

Fabrics displayed to the user in non-English language did not match the translated fabric selected. This issue has been resolved.

Lettering issues

Problem

Resolution

Complex Fill TTF conversions	When converting letters with holes, such as the registered trademark character ®, strokes inside the outer ring were not always properly generated. This issue has been resolved.
Unwanted Wingdings in text field	Characters entered into the text field sometimes appeared as Wingding symbols, even when a Wilcom alphabet was selected. This happened after digitizing lettering with Webding and Wingding alphabets. This issue has been resolved.
Layout names	Teamname layout names did not always appear in the Teamname Layouts dialog. Sometimes the name fields appeared blank. This issue has been resolved.
Team Names options when sending via Connection Manager	Problems were reported when selecting Team Names options when sending designs via Connection Manager. This issue has been resolved.

Auto-digitizing issues

Problem	Resolution
Converting embroidery to graphics	Previously, 'Convert Embroidery to Graphics' did not always convert selected embroidery to vectors. When it did convert, a 'ghost image' of the embroidery could still be seen after conversion to graphics. These issues have been resolved.
Appliqué covering stitches when converting vectors	When creating an appliqué object from a combined vector object, covering stitches for the hole were positioned on the wrong side for appliqué and had to be manually fixed by swapping 'Inside' and 'Outside' values. This issue has been resolved.

Thread-related issues

Problem	Resolution
Assigning threads to colorways	The Color Palette Editor dialog was slow to respond during thread assignments involving a large number of colorways – e.g. > 50. This issue has been resolved.
Only used colors displayed in colorways	Colorways available from the Color Palette popup menu showed all colors in the palette, whether used or not. Now only colors used in the design (underlined in blue) are displayed. If no color is currently being used, no colors appear in the combo – only the name and background.
Improved colorway popup display	The number of colors visible in the colorways popup menu has been increased as follows: <ul style="list-style-type: none"> • Maximum number of (used) colors shown has been increased from 8 to 16. • The number of colorways shown at any one time has increased from 4 to 6. The list can be scrolled to reveal more colorways if available.

System-related issues

Problem	Resolution
Access denied when starting software	Previously, the very first time ES was started, an 'Error - Access Denied' message was displayed. This issue has been resolved.
Software crashes with Flatten tool	Software crashes were reported when using the Flatten shaping tool with embroidery objects. This issue has been resolved.

Miscellaneous

Problem

Resolution

Rotating objects with slanted satin

When a Satin or Raised Satin outline object with Calligraphy applied is rotated and entry and exit points are changed, the stitch angle of the object does not reflect the original orientation of the object. This issue has been resolved.

Compound Chenille needle height

The **Needle Height** controls in the **Compound Chenille Effect** dialog were not working properly. This issue has been resolved.

Background preview in 'New from Template'

When selecting a fabric in the **New from Template** dialog, the background preview panel continues to display some background color behind the fabric. This issue has been resolved.

Object scaling width and height values

When resizing an object via selection handles, the **Width** and **Height** values appearing in the resize tooltip were out of sync with those of the **Property Bar**. This issue has been resolved.

Happy machine hoop display

Happy machine hoops appear in the software to be smaller than actual size. This issue has been resolved.

New & improved features in ES e3.0K

The main purpose of the e3.0K software update is to provide runtime estimates for stitching designs on specified machines.

Runtime analyst feature

The Runtime Analyst calculates the estimated running time for a specific embroidery file on an embroidery machine using specified RPM values and other runtime parameters. These are used on a design-by-design basis to determine scheduling, running costs, and calculate payments for production staff. Output can be used by any third-party software such as ERP and accounting systems.

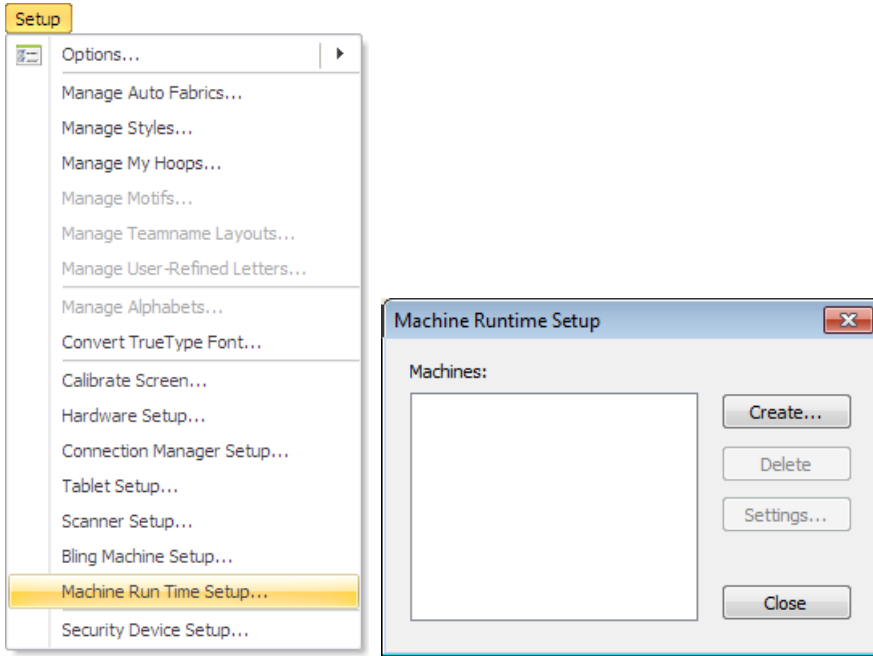
Typical usage

Information can be made available to various stakeholders for payroll, estimations, and scheduling. For instance:

- The designer creates a new design and saves as EMB and/or stitch file such as U11.
- EmbroideryStudio automatically calculates running time.
- The designer saves or the system automatically saves calculated results to a CSV file in a designated file location.
- The Payroll Department accesses the CSV file and calculates pay rates for the design. For example:
 - A Payroll Clerk may need to find out what the runtime will be for a given job in order to pay the machine operator.
 - A Manager may need to provide an accurate runtime estimate for any given design so the payroll department is able to process machine operator payments.
- The ERP system accesses the CSV file for estimation and scheduling purposes.
- Runtime information may need to be communicated to the Machine Operator who needs to know the runtime estimate for specific jobs.

Machine setup

Users can set up multiple named machines with specific parameters such as 'fast speed', 'slow speed', 'trim time', 'color change time', etc. Access the **Machine Runtime Setup** dialog via the **Setup** menu ...

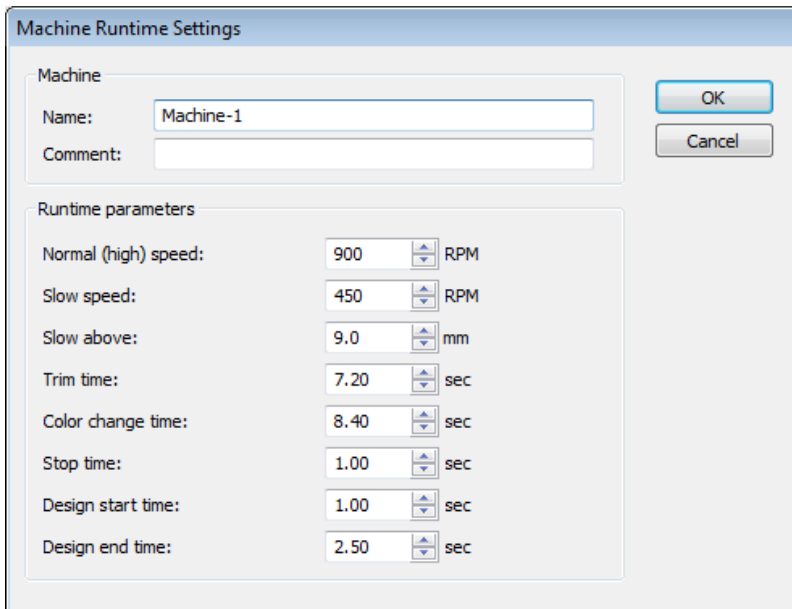


This dialog is similar to **Connection Manager Setup**. It lists all machines currently defined in the software for the purposes of runtime analysis.

Note: Machine types set up here are independent of machines defined in **Connection Manager Setup** or **Embroidery Machine Connection** dialogs.

Machine runtime settings

Click **Create** to access the **Machine Runtime Settings** dialog ...

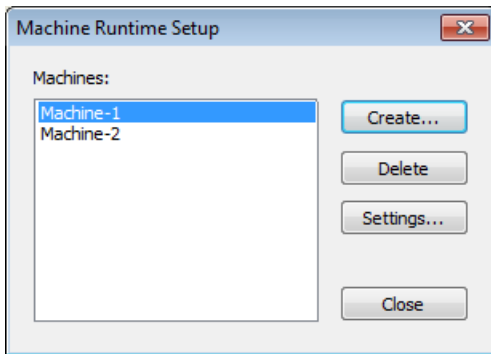


Parameters set here are based on metrics gathered both from machine specs, controller and/or empirical observation.

Parameter	Description
-----------	-------------

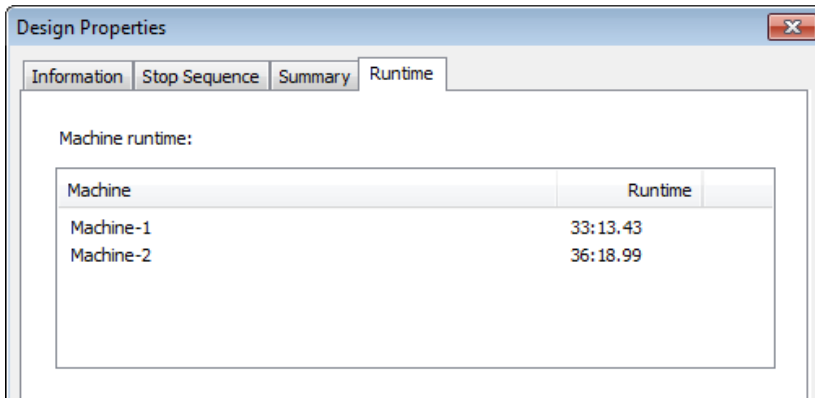
Name	May pertain to a particular machine or a class of machines. The class may be based on machine model. However different machines of the same model may be set up for different purposes – e.g. to run at different speeds. If so, you'll need to set up different classes to suit.
Normal (high) speed	Defines the speed at which the machine normally sews. Normally available from machine specs.
Slow speed	Defines the slowest speed at which the machine runs. Normally available from machine specs.
Slow above	Defines the length of stitch above which the machine slows down. This value is automatically adjusted according to speed settings, in particular slow speed. It should be available from the machine specs.
Trim time	The time the machine takes to perform a trim. May be available from machine specs or empirical observation.
Color change time	Same as for Trim time.
Stop time	Defines time spend stopping in order to place fabric, foam, etc. This is normally determined through empirical observation. The number of heads on the machine will be a determining factor – e.g. 16 heads x 6 secs each.
Design start time	Defines how long the machine takes to go from stop to normal speed – e.g. it may stitch a number of slow stitches to start off. May be available from machine specs or empirical observation.
Design end time	Defines stopping time – the machine may slow down and then travel to the centre of the hoop before actually stopping.

All machines or machine classes you define are listed in the **Machine Runtime Setup** dialog. From here they can be updated or deleted from the system.

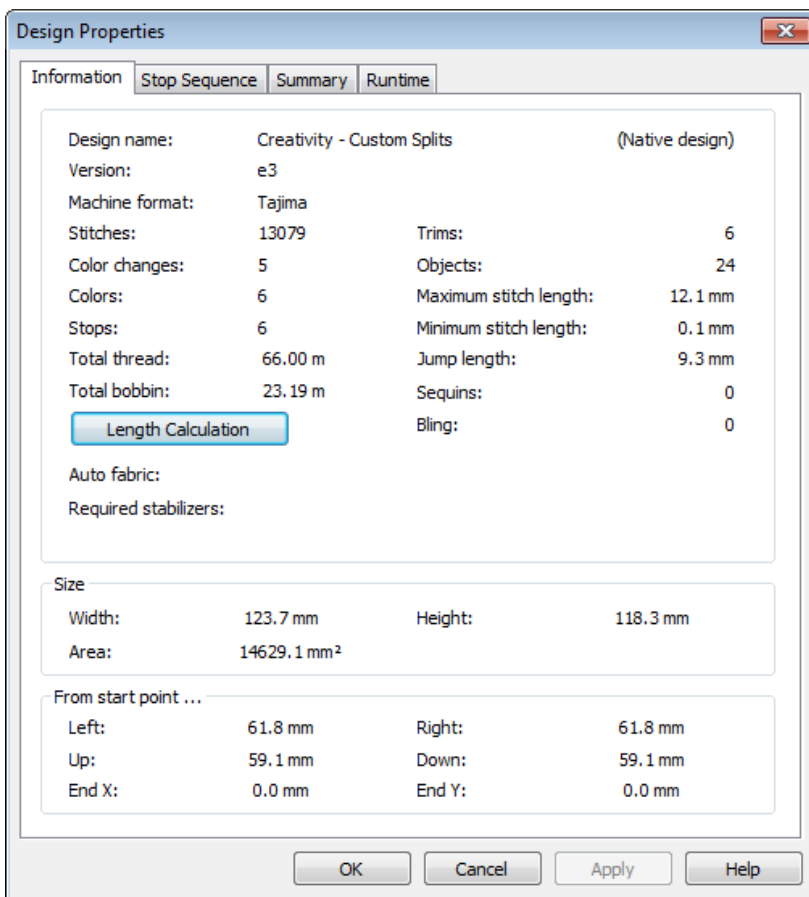


Design information

Once your machines or machine classes have been defined, estimated running time for a specific embroidery file is displayed in the **Design Properties** dialog under a new **Runtime** tab.



This tab lists available machines and estimated runtimes for the current design. A new **Area** field on the **Information** tab shows total design area. It is calculated by multiplying design width and height, not actual stitched area. This figure is used to estimate the cost of fabric or 3D foam that can be used in the design.



Outputting design information

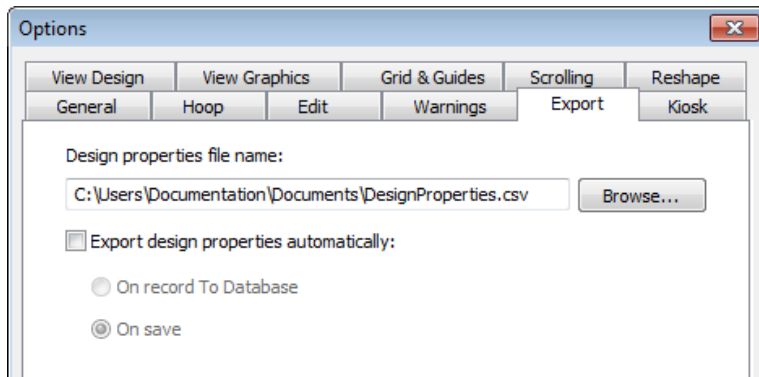
Design information, including runtime estimate and relevant parameters, can be output to CSV file for later use by third-party applications. New data is appended to any existing CSV file.

Predefining export options

Design information can be written whenever the design is:

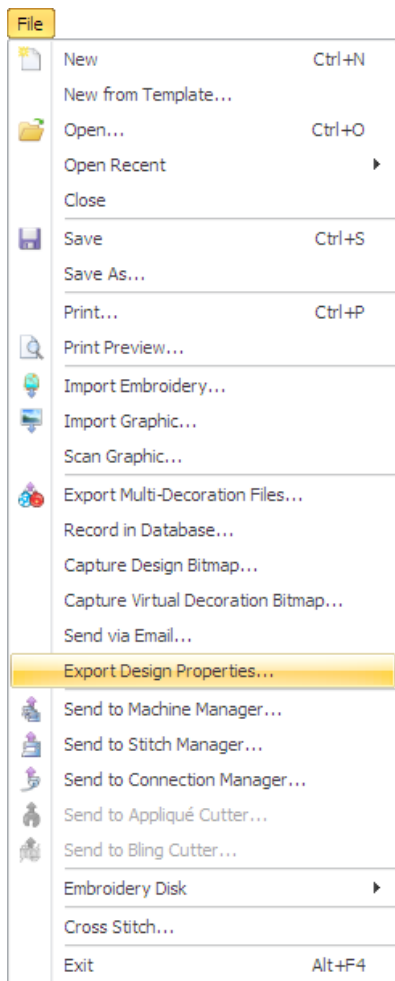
- recorded into DW database
- saved

A new **Options > Export** tab allows you to preset these options.



Manually exporting design properties

The new **File > Export Design Properties** command allows you to manually save current design properties.



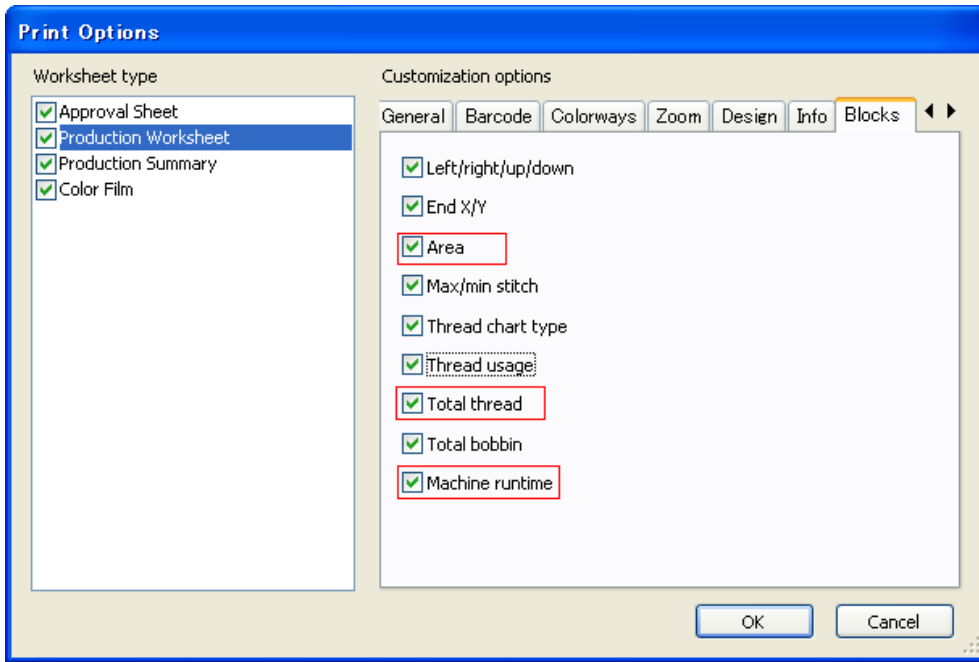
CSV output

The CSV output file includes the following fields. The first group derive from the **Design Properties > Information** tab. The next group derives from parameters entered in the **Machine Runtime Settings** dialog.

Field	Description
Design properties	Data derived from design properties
Date	Date and time of exporting properties.
File name	Name design saved under.
Machine format	Machine format of design.
Stitches	Total number of stitches in design.
Colors	Total number of thread colors in design.
Color changes	Total color changes – may or may not coincide with number of colors.
Stops	Number of machine stops in design.
Trims	Number of trims in design.
Sequins	Number of sequins in design.
Blings	Number of individual rhinestones in design.
Thread length (m)	Total length of thread used in design.
Height (mm)	Height of sewing area – derived from design extents.
Width (mm)	Width of sewing area – derived from design extents.
Area (mm ²)	Area covered by design – calculated according to design extents.
Runtime data	Data derived from machine runtime settings
Below	Number of stitches stitched at slow and high speed according to 'slow above' parameter. Combined numbers should equate to 'Stitches' value.
Above	
Machine	Machine as shown on Machine Runtime Setup dialog. If there are multiple machines defined, a separate line entry appears for each.
Normal (high) speed (RPM)	Runtime setting as shown on Machine Runtime Settings dialog.
Slow speed (RPM)	Ditto
Slow above (mm)	Ditto
Trim time (sec)	Ditto
Color change time (sec)	Ditto
Stop time (sec)	Ditto
Design start time (sec)	Ditto
Design end time (sec)	Ditto
Runtime (min:sec)	Calculated runtime of this design according to particular machine as shown on Design Properties > Runtime tab. If there are multiple machines defined, a separate line entry appears for each.

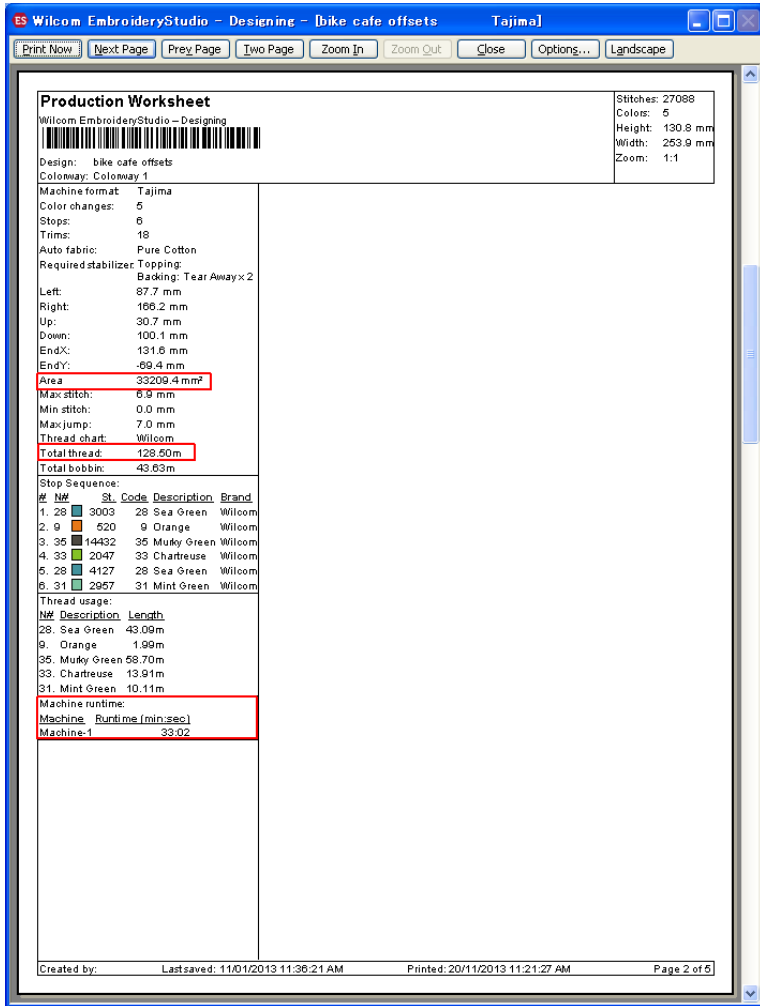
Printing of runtime estimates & design area

The Production Worksheet prints the new runtime information. Three new fields to control the new information appear under the **Blocks** tab: 'Area', 'Total thread' and 'Machine runtime'.



The **Machine runtime** checkbox is only available if the feature is available in the software. If there are no machines set up, checking 'Machine runtime' has no effect as there is nothing to print.

Total thread prints the information of the same name in the **Design Properties** dialog. This information is included in both Production Worksheet and Production Summary.

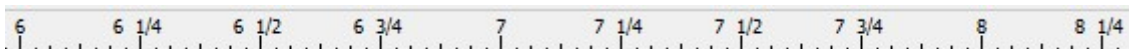


Interface & usability improvements

ES e3.0K includes the following interface & usability improvements.

Ruler display

Inch rulers are now displayed in 1/16, 1/8, 1/4, 1/2, and 1" divisions not 1/10s. The grid size can be set in decimal inches now. This is usable as is.



Transformation & measure tooltips

Unit of measure displayed in the Resize tooltip can now be chosen by the user. Similarly distance moved – e.g. moving letters – is now displayed in appropriate units. Similarly, 'Length' and 'Angle' labels have been added to the Measure tooltip, together with the appropriate length unit.



Travel tool keyboard shortcuts



All **Travel** tools now have keyboard shortcuts. New shortcuts include:

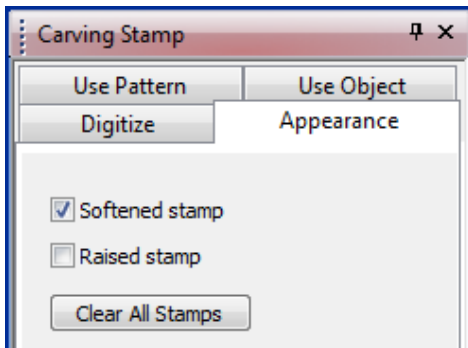
- Travel by 1000 stitches: Shift + Num- / Shift + Num+
- Travel by Function: Ctrl + Page Up / Ctrl + Page Down
- Travel by Trim: Ctrl + Left Arrow / Ctrl + Right Arrow

Ctrl+M shortcut for Auto Trace

The **Ctrl+M** shortcut is not correctly activating **Auto Trace**. This issue has been resolved.

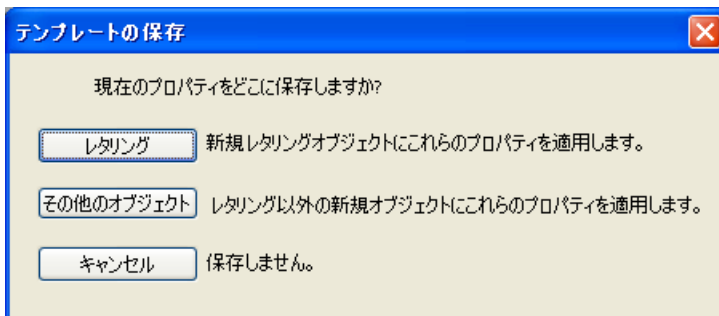
Appearance tab in Carving Stamp docker

The software crashes on closing all open windows when the **Appearance** tab is selected in **Carving Stamp** docker. This issue has been resolved.



Other Objects option in Save to Template dialog

The **Other Objects** option is missing in the **Save to Template** dialog in languages other than English. This issue has been resolved.



Machine Manager in Japanese

Machine Manager is not working in e3 Japanese. This issue has been resolved.



Schiffli toolbar Borer Depth display

The **Schiffli** toolbar does not show correct **Borer Depth** when traveling through stitches in ES e3. This issue has been resolved.



Garbage characters in Japanese menus

Garbage characters are appearing in menus in e3 Japanese when using WinXP. This issue has been resolved.

Photo Flash and Auto Digitize Bitmaps

If the **Auto Digitize Bitmaps** Element is disabled, the **Auto-Digitizing Tools** flyout is not available on the **Toolbox** toolbar. This means the **Photo Flash** icon is not available even when the Element is enabled. The **Photo Flash** tool is now correctly displayed when enabled.

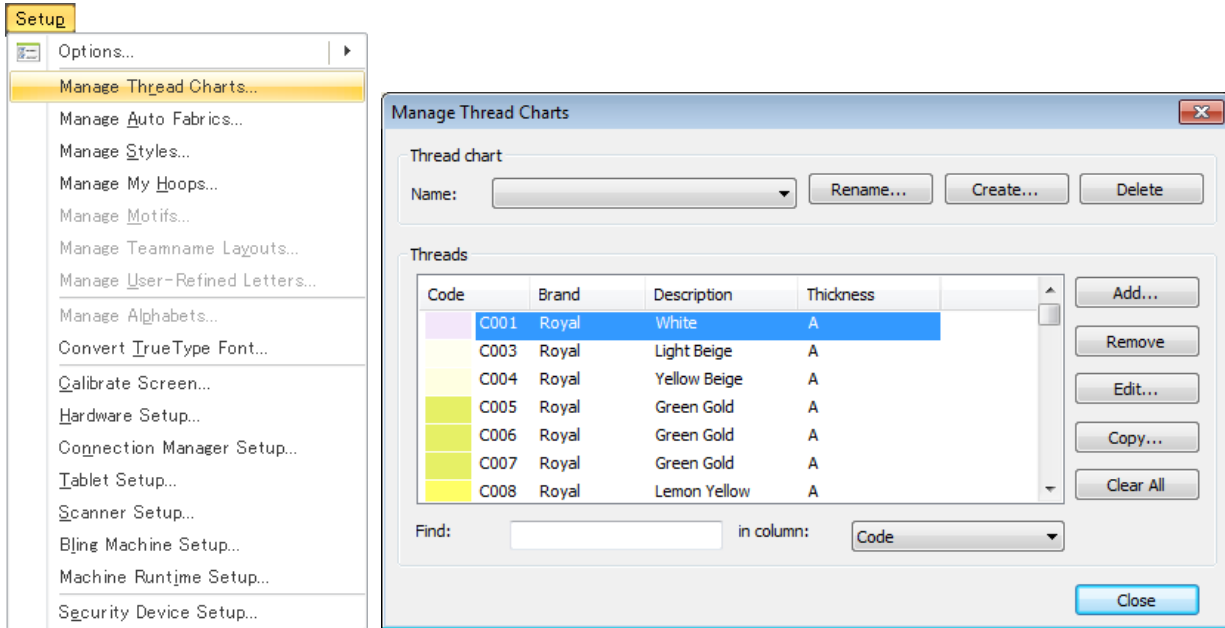


Thread & fabric improvements

ES e3.0K includes the following thread and fabric improvements.

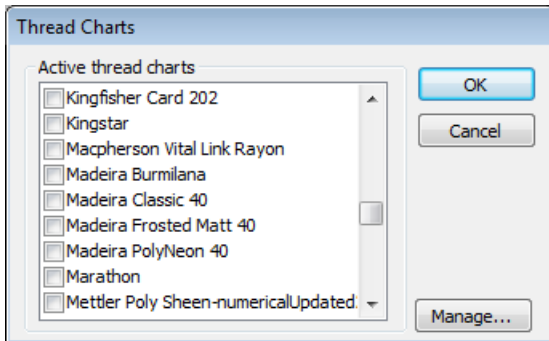
Access to Manage Thread Charts dialog

The **Manage Thread Charts** dialog is now directly accessed via the **Setup** menu along with other asset management functions. Previously it could only be accessed indirectly via the **Thread Charts** dialog.



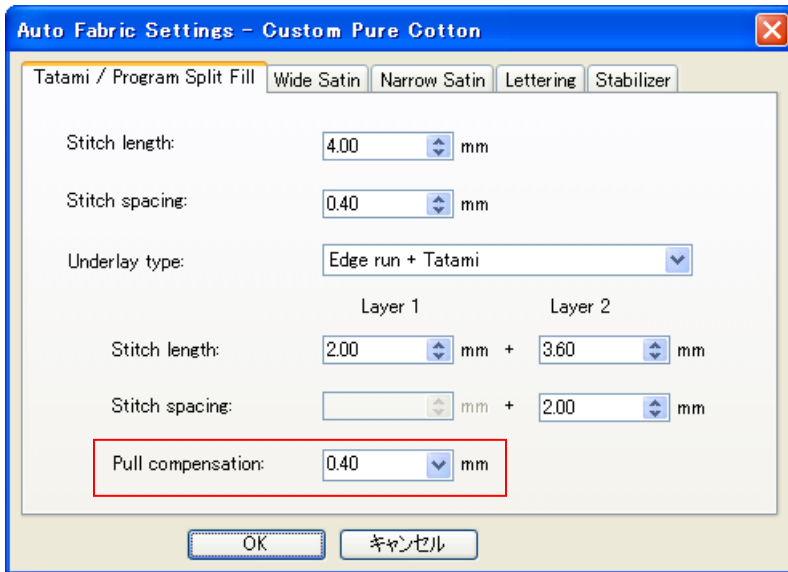
Madeira color palettes

Madeira color palettes have been updated and now include all the latest threads. The new **PolyNeon** palette is also included.



Pull compensation fabric settings

There is a rounding issue with pull compensation settings: values that should be .40 appear as .39. Also the pull compensation unit is missing in all tabs, except Stabilizer, in the **Auto Fabric Settings** dialog. These issues have now been resolved.



New from Template dialog

Currently, the last chosen template is not remembered in the **New from Template** dialog. It always appears with the **Normal** template selected. This issue has been resolved.

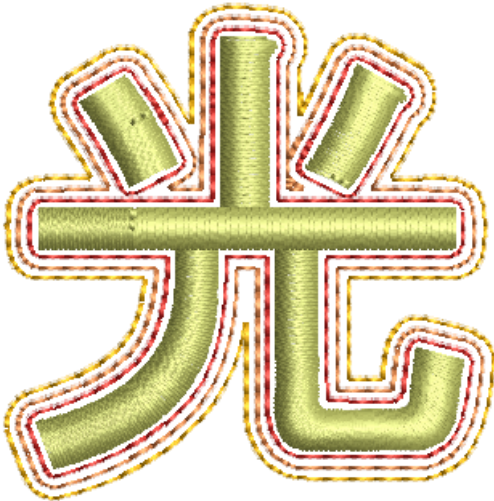


Lettering improvements

ES e3.0K includes the following lettering improvements.

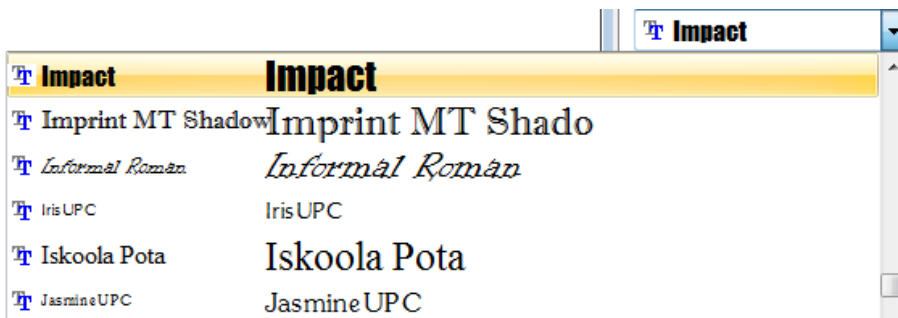
Offset outlines with Kanji lettering

DS now provides the ability to apply offset outlines to Kanji characters as part of a lettering object.



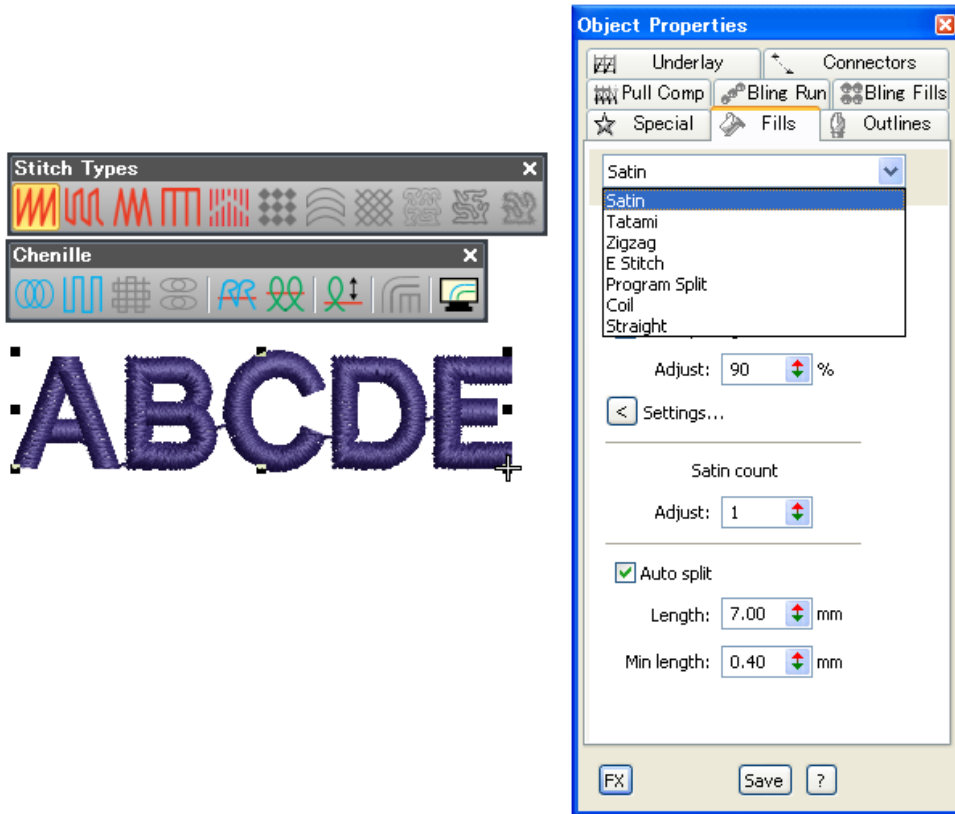
Preview of fonts in lettering properties

Previewing fonts in lettering properties can cause ES to unexpectedly shut down. This generally happens if there are a very large number of TrueType fonts installed in Windows. This issue has been resolved.



Available stitch types for lettering and branched objects

There are inconsistencies between stitch types available for lettering and branched objects on the toolbars and those displayed in the **Object Properties** dialog. This issue has been resolved.

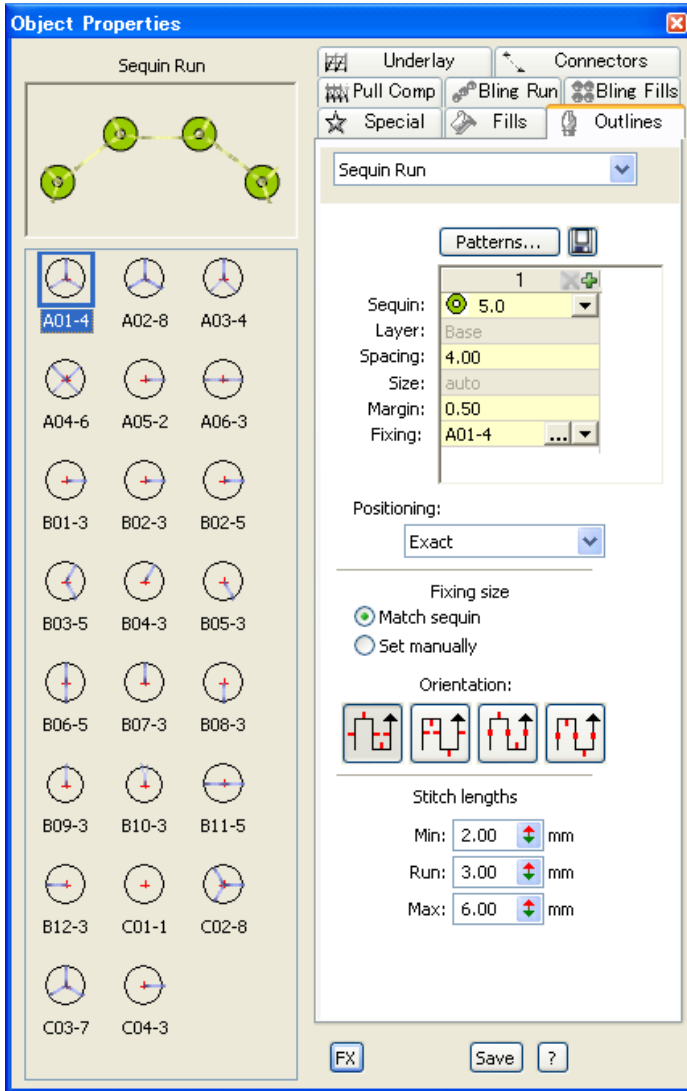


Stitching & color improvements

ES e3.0K includes the following stitching and color improvements.

Sequin fixing stitch previews

Sequin fixing stitch preview were incorrect for A01-4, A02-8, A03-4, and A04-6. These have now been fixed.



Slant angle of zigzag underlay

The slant angle of zigzag underlay defaults to 30° when opening an V2006 or earlier EMB files in e3. This can cause the underlay to extend outside the boundary. With e1.5 and e2.0, the slant angle correctly defaults to 90°. This issue has now been resolved for V2006 and earlier.

Color assignment with Fill Holes

After applying **Fill Holes** to an object with holes, changing color of the source object incorrectly changes the color of the fill object. Also vice versa. This issue has been resolved.

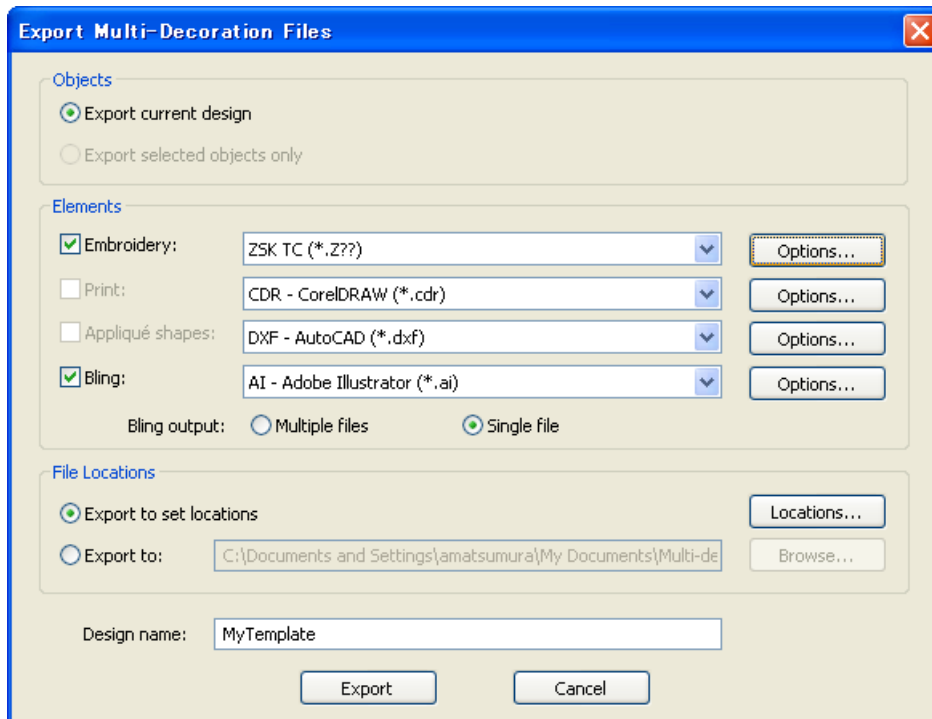


File handling improvements

ES e3.0K includes the following file handling improvements.

Using ZSK TC format in Export Multi-Decoration Files

Clicking **Options** when using ZSK TC format in the **Export Multi-Decoration Files** dialog crashes the software. This issue has been resolved.



Design Explorer and DesignWorkflow file display

Currently, DE and DW do not display Barudan U?? files at all. This issue has been resolved.

Saving single sequins

When saving a single sequin created by **Sequin Run Manual** or **Sequin Run Auto** to any file format results in the sequin being lost upon reopening the design. This issue has been resolved.

Missing formats in ES

TrueSizer can open and save some formats that are not available in ES. This has now been corrected so that all products open and save the same formats. Also, three additional formats have been added to both TrueSizer and ES:

- Elna (*.EMD)
- Janome/Elna/Kenmore (*.JEF+)
- Pfaff (*.PCM)

Solving problems

If you encounter a problem with the EmbroideryStudio e3.0K software update, refer to the following sources for help:

- Wilcom EmbroideryStudio e3.0 User Manual – select **Help > User Manual**.
- Wilcom EmbroideryStudio e3.0 Onscreen Help – select **Help > OnScreen Help**
- Windows help – select **Start > Help and Support**
- Windows manual – documentation supplied with your hardware.

If you are unable to solve a problem, you should contact your Wilcom dealer. Before seeking help, check that your PC meets the system requirements, and check the Troubleshooting chapter of the Onscreen Manual.

Copyright

Copyright © 1990-2013 Wilcom Pty Ltd. All rights reserved.

No parts of this publication or the accompanying software may be copied or distributed, transmitted, transcribed, stored in a retrieval system or translated into any human or computer language, in any form or by any means, electronic, mechanical, magnetic, manual, or otherwise, or disclosed to any third party without the express written permission of:

Wilcom Pty Ltd. (A.B.N. 43 001 971 919)
146-156 Wyndham Street, Alexandria (Sydney)
New South Wales, 2015, Australia
PO Box 581, Alexandria, 1435
Phone: +61 2 9578 5100
Fax: +61 2 9578 5108
Email: wilcom@wilcom.com
Web: <http://www.wilcom.com>

TrueView™ and Point & Stitch™ are trademarks of Wilcom Pty Ltd. Portions of the imaging technology of this Product are copyrighted by AccuSoft Corporation. The EPS File Import/Export Converter used in this Product is copyrighted by Access Softek, Inc. All rights reserved.

Contact

If you have any questions, please contact your local Wilcom dealer or distributor in your country.