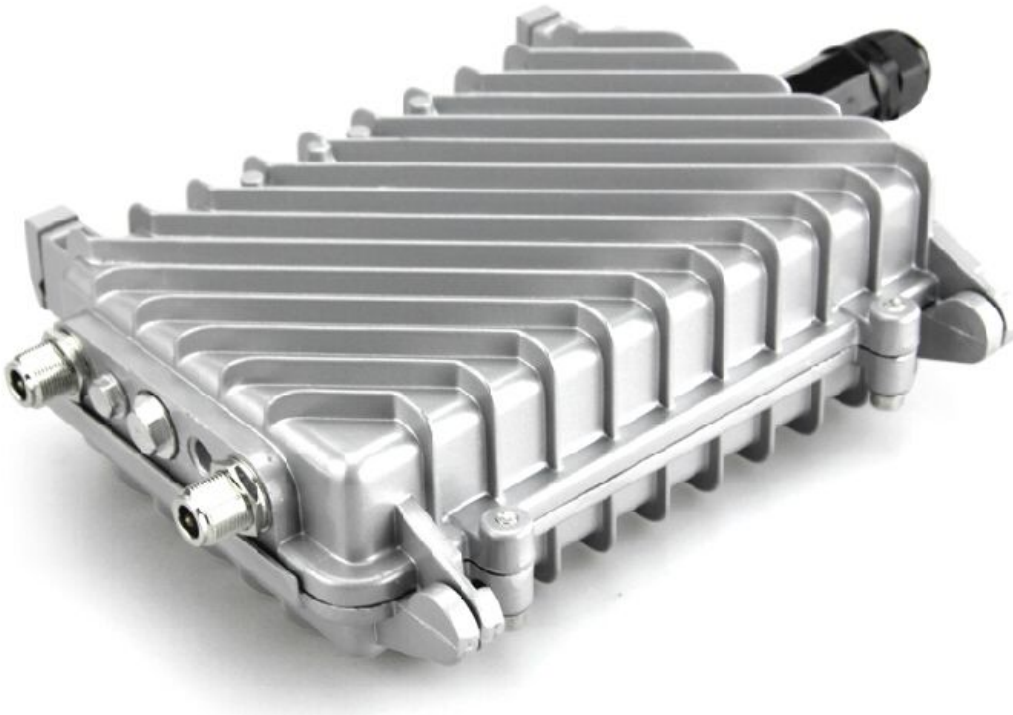




300Mbps Outdoor CPE

Model: AP21



Description:

AP21 is an Industrial long range solution for outdoor wireless networking applications. Comply with IEEE 802.11b/g/n standard, 300Mbps high speed, 2T2R MIMO antenna connector for more wifi range.

It support wireless AP, Gateway, WiFi Repeater, Bridge operation mode, user can flexibly choose a suitable wireless mode to build or extend the wireless networking based on exist networking structure.

AP21 with metal waterproof, dustproof and sunscreen shell, temperature adaptive and board protective to work in harsh outdoor environment, meanwhile, the auxiliary cooling function make AP20 work normal at -40°C to 70°C, suit for any country.

Meantime, it support Power over Ethernet, support passive / 802.3af PoE, easy in setup even no power socket nearby.

Last and important, AP21 work with Yuncore's AC controller for central management under wireless AP operation mode, WEB portal authentication and wifidog are optional, can make advertisement or work with cloud platform if required under gateway operation mode.



Specification:

Hardware:

Chipset	Atheros 9341
Wireless	802.11N, 2T2R 300M MIMO Technology
Memory	64MB DDR2 RAM (128MB available by extra cost)
Flash	8MB(16MB available by extra cost)
Interface	1 10/100 Mbps RJ45 Port, support 12~24V PoE 1 Reset Button
Antenna	SMA antenna connector
LED Light	POWER WIFI WAN LAN S1(GPIO9) S2(GPIO14) S3(GPIO11) S4(GPIO12)
Size	L: 153.2mm, W: 79.5mm, H: 234.5 mm
Power	POE 24V/1A;110V/220V

RF Data

RF Data	802.11b/g/n:		
	2.4~2.4835GHz		
	Korea、Japan、ETSI、FCC		
Modulation	OFDM = BPSK,QPSK, 16-QAM, 64-QAM		
	DSSS = DBPSK, DQPSK, CCK		
Data Rate	300 Mbps		
Receive Sensitivity	802.11n(2.4GHz)	802.11g	802.11b
	-90dBm @ MCS0	- 90dBm @ 6Mbps	- 95dBm @ 1Mbps
	-72dBm @ MCS7	- 72dBm @ 54Mbps	- 90dBm @ 11Mbps
	-90dBm @ MCS8		
	-68dBm @ MCS15		
RF Output Power			
	802.11n(2.4GHz)(± 1.5dBm)	802.11g(± 1.5dBm)	802.11b(±1.5dBm)
	28dBm@ MCS0~2/MCS8~10	28dBm @ 6~24Mbps	28dBm @1~11Mbps
	28dBm @ MCS3/MCS11	27dBm @ 36Mbps	
	27dBm @ MCS4/MCS12	27dBm @ 48Mbps	
	27dBm @ MCS5/MCS13	26dBm @ 54Mbps	
	26dBm @ MCS6/MCS14		
	26dBm @ MCS7/MCS15		



Firmware	
Operation Mode	Wireless AP, Gateway, WiFi Repeater
Protocol/Standard	IEEE 802.3(Ethernet)
	IEEE 802.3u(Fast Ethernet)
	IEEE 802.11b/g/n(2.4G WLAN)
Wireless	Auto-Channel selection
	Distance Control (802.1x Ack timeout)
	Multiple SSID (4 SSID)
	BSSID
Security	WEP Encryption-64/128/152 bit
	WPA/WPA2 Personal (WPA-PSK using TKIP or AES)
	WPA/WPA2 Enterprise (WPA-EAP using TKIP)
	Hide SSID
System Setting	Web-based configuration (HTTP/Telnet)
Firmware upgrade	Upgrade firmware via web browser or TFTP
Administration	Admin Password can be configured
System monitoring	Status in hand , useful statistic and Event log
Log	Supports local logs, logs host, logs file export
Reset	Reset or factory defaults
Backup	Restore settings & configuration of the device to local file
Physical Property	
Temperature	Working: -40°C~70°C
	Storage: -40°C to 85°C
Humidity	10%~95% (typical)
Package:	
AP21 unit	
PoE Adapter	
User Manual	
LAN Cable	

Remark: 8dBi omni antenna is optional by extra cost.

