

Initial Start-up

To obtain warranty coverage, please visit: warranty.apc.com

Inspection

Inspect the Patch Panel upon receipt. Notify the carrier and dealer if there is damage. The packing is recyclable; save it for reuse or disposal of it properly.

Placement

Install the Patch Panel in a protected area that is free of excessive dust and has adequate air flow. Do not install the Patch Panel where temperature is outside the specified limits.

Warning: Changes or modifications to this unit not expressly approved by the party responsible for compliance could void the warranty

Tools Required (not provided)



#2 Phillips Screwdriver



Cable Preparation Tool



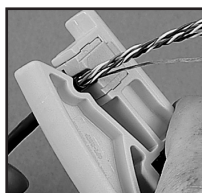
110 Punch Tool

Proper installation and termination practices are necessary to ensure the correct operation of the patch panel. Reference the Telecommunications Industries Association and Electronic Industries Alliance publication "Commercial Building, Telecommunications Cabling standard, General Requirements" (document number TIA/EIA-568-B.1-2001 to ensure proper installation of wiring.

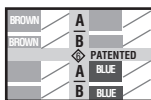
Note: Due to the amount of force required for wire installation, it is recommended the Patch Panel be installed on the front or rear rails of an APC NetShelter® or any other standard rack during the wiring process.

Installation

- Strip back approximately 50mm (2 in.) of cable jacket using cable preparation tool



- Follow the color-coded label for T568A/B wiring schemes, starting with the brown pair on the top left IDC positions and ending with the blue pair on the bottom right position.



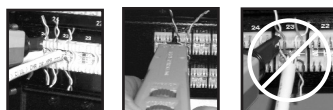
Pin #	Wire Color	Pin #	Wire Color
5	white/blue	5	white/blue
4	blue	4	blue
1	orange/white	1	green/white
2	orange	2	green
3	green/white	3	orange/white
6	green	6	orange
7	brown/white	7	brown/white
8	brown	8	brown

- Center the cable jacket with 110 connecting block as shown. Insert all conductor pairs into slots by pressing firmly into position.



Note: Begin at the corner of the panel where the cables enter, and work towards the middle

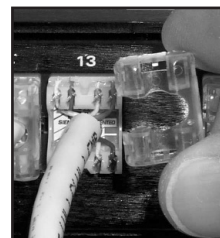
- Terminate conductors using punch tool. Ensure tool is perpendicular to connecting block



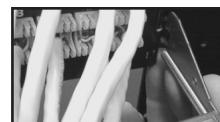
Warning: Failure to keep the tool perpendicular to connecting block during punch down may result in incorrect termination

- Slide termination cap over the cable and snap into place prior testing.

Note: Cap removal can be accomplished by placing a small flat bladed screwdriver in the slots of the cap and prying loose



- After cable termination, attach the rear cable manager



- Secure the cables to the manager bracket using cable ties or hook/loop straps (not included)



Troubleshooting

If the channel connection is failing upon completion of the installation, perform channel and continuity test with appropriate cable tester to localize faulty wire, panel or termination connection and replace or repair.

Service

If the device arrived damaged, notify the carrier.

If the device requires service do not return to the dealer!

Following these steps:

- Consult the troubleshooting section to eliminate common problems.
- If the problem still persists, call Customer Service or visit the APC Internet Website (www.apcc.com).
 - Note the model number, serial number and the date of purchase. Be prepared to troubleshoot the problem with an APC Technical Support representative. If this is not successful, APC will issue a Return Merchandise Authorization (RMA) number and a shipping address.
 - If the device is under warranty, repairs are free. If not, there is a repair charge.
- Pack the device in its original packaging. If the original packaging is not available, ask Customer Service about obtaining a new set.
 - Pack device properly to avoid damage in transit. Never use Styrofoam beads for packaging. Damage sustained in transit is not covered under warrant
 - Include a letter with your name, RMA#, address, copy of the sales receipt, description of the trouble, your daytime phone number, and a check (if necessary)
- Mark the RMA# on the outside of the package
- Return the product by insured, prepaid carrier to the address given to you by Customer Service.

Specifications

	CAT6PNL-24	CAT6PNL-48
Connector 1	24 x RJ45	48 x RJ45
Connector 2	24 x 110	48 x 110
Size (H x W x D)	48.7 x 4.5 x 3.2 (19 x 1.7 x 1.2 in.)	48.7 x 9 x 3.2 (19 x 3.5 x 1.2 in.)
Shipping weight	1.2 LBS (.54 KG)	2.5 LBS (.90 KG)
Operating temperature	0 to +60° C (+32 to 104°F)	0 to +60° C (+32 to 104°F)
Safety and approvals	UL	UL

North & South America APC 132 Fairgrounds Road West Kingston, Rhode Island 02892 USA 1-800-800-4APC/1-401-789-5735	Europe APC Ballybritt Business Park Galway, Ireland 10800-702000 353-91-702020	Asia Pacific APC Level 13 The Denison 65 Berry Street North Sydney, NSW 2060 61 2 9955 9366
Internet: http://www.apcc.com		
Local, country-specific centers: go to www.apc.com/support/contact for contact information		