

SPECIFICATIONS

High output digital 12 volt amp with rotary volume control, max output: 97dB at 0.5 meter	
Rechargeable 3300 mAh Lithium Ion integrated power pack	
Works with any MP3 player, music capable phone or smartphone (check size limit below)*	
Holds player in reach under clear touch-screen compatible scratch resistant film	
Quick-release handlebar mount w/rotation-stop cable, fits 7/8" (22.5mm) to 1.25" (31.8mm)	
Works with phone's hands-free and GPS navigation features, charges select smartphones	
Max player size*	5.59" x 2.85" x 0.75" (142mm x 72.5mm x 19mm)
Audio cable plug (removable cable)	1/8" (3.5mm) stereo 3 conductor TRS
Charge time / Play time (approximate)	2-4 hours / 9+ hours depending on volume
Auto shut-down time (approximate)	30 minutes
AC charger	100-240VAC in, 12.6v, .4A out, positive (+)TIP
USB charger (will not fit all smartphones)	4.5-5.5v, 500mA-850mA (1.4A max), 30 sec timer
Bag exterior	Black nylon, quiet zipper pulls, integrated carry handle, removable shoulder strap
Bag interior (approximate)	Storage: 10"x4"x3.5" (254x102x89mm) External pocket: 5"x4.5"x1" (127x114x25mm) with Internal mesh pocket
Size and weight (approximate)	11" x 5" x 10" (279 x 127 x 254mm), 2.1 pounds
Regulatory	FCC class-B, CE, UL, RoHS, lead free

WARRANTY

Audible Rush, Inc. provides a limited 90 day warranty on all of its Jam-Pac, Jam-Lite Music Docks, and accessories. This warranty guarantees that the products are free from defects in workmanship and materials, under normal use and conditions, for a period of 90 days from the date of purchase. Should your product fail to function satisfactorily, please see our FAQ page. If you still continue to have an issue, please CONTACT US to have one of our experts try to help.

Disclaimer of warranty: This warranty is valid only if the product is used for the purpose for which it was designed. It does not cover damage caused by misuse or abuse; accident; the attachment of any unauthorized accessory; alteration to the product; improper installation; unauthorized repairs or modifications, improper use of electrical/power supply; loss of power; dropped product; malfunction or damage of an operating part from failure to provide manufacturer's recommended maintenance; transportation damage; theft; neglect; vandalism; or environmental conditions; loss of use during the period the product is at a repair facility or otherwise awaiting parts or repair; or any other conditions whatsoever that are beyond the control of Audible Rush, Inc. A product that requires modifications to work in another country other than the country for which it was designed, manufactured, approved and/or authorized, or repair of products damaged by these modifications is not covered under this warranty. This warranty is valid only in the United States of America and does not extend to owners of the product other than to the original purchaser. In no event will Audible Rush, Inc. or any of its affiliates, contractors, resellers, their officers, directors, shareholders, members or agents be liable to you or any third party for any consequential or incidental damages, any lost profits, actual, exemplary or punitive damages. In no event shall this warranty require more than the repair or replacement of any part or parts which are found to be defective within the effective period of warranty.

Audible Rush™

Jam-Pac Premium Plus™ *Handlebar Bag Music System*



User Manual

For questions and installation help go to
www.audiblerush.com/support

IMPORTANT SAFETY INSTRUCTIONS

DO NOT OPERATE CONTROLS ON YOUR PHONE, MP3 PLAYER OR THE MUSIC DOCK unless you are stopped and out of the way of all traffic. DO NOT LOSE CONCENTRATION ON WHAT IS AROUND YOU. MAINTAIN SAFE OPERATION OF YOUR BIKE AND/OR OTHER ACTIVITIES AT ALL TIMES. DO NOT TEXT, MAKE CALLS OR CHANGE NAVIGATION SETTINGS WHILE RIDING.

DO NOT OVERLOAD YOUR STORAGE BAG. Total weight of additional items in your bag must not exceed 3 pounds. Steering may be affected by weight of bag; exercise caution until you are adjusted to handling the bike with bag in place.

Water, moisture, heat: Do not charge your unit near water. Do not use your unit (even if not charging) near water such as swimming pools, bathtubs or sinks. Heat: Do not expose to excessive heat such as radiators, heat registers, stoves, etc.

Service: The unit and charger should be serviced by qualified service personnel when dropped, damaged, exposed to rain or other liquids, the charger, cable or plug has been damaged or unit does not function normally. User should not attempt to service the unit or charger. **Charger:** ONLY USE AUDIBLE RUSH SUPPLIED CHARGER.

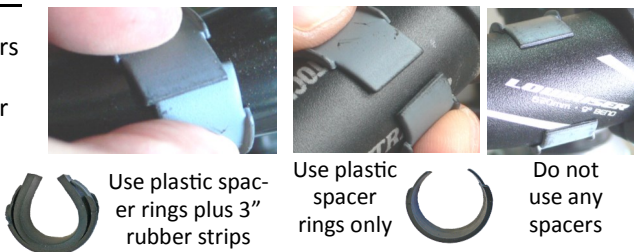
MAINTENANCE

Clean your unit with a soft cloth moistened with mild soap and water. Stronger cleaning agents, such as benzene, thinner or similar materials will damage the surface. To clean the transparent player protective film, use only water or cleaning solutions approved for use with coated eyeglasses. DO NOT USE household window cleaner or you will damage the appearance and function of the film.

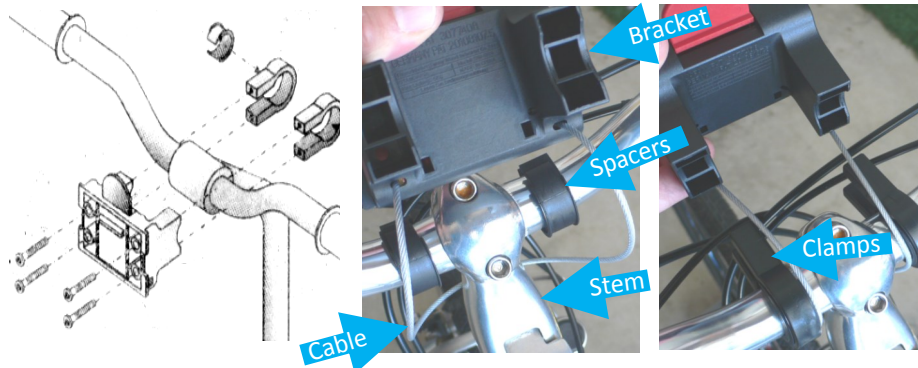
Jam-Pac™, Jam-Pac Premium Plus™ are trademarks of Audible Rush, Inc. All Rights Reserved.
Copyright Audible Rush 2011, Patents pending. JAM055-802 v2.6

BRACKET INSTALL

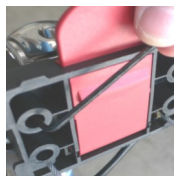
1) Determine which spacers to use: Temporarily snap plastic spacer ring over bar and pinch closed with fingers. If it looks like the picture, then...



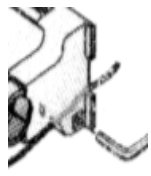
2) Place spacers (if any) around each side of handlebar. Wrap cable under stem, feeding ends into far 2 holes in bracket. Place 2 clamps over spacers and slide bracket over clamps.



3) Insert 4 screws. Place mount in vertical position and tighten so that bracket does not rotate on handlebar.



4) Adjust one end of cable so it is flush and tighten set screw. Pull other end of cable tight (remove all slack) and tighten set screw. Trim excess cable.



5) Clip on.



PLAYER INSTALL

IMPORTANT: Set player volume to 90%

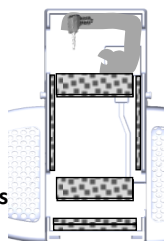


Jam-Pac comes set for iPhone- Insert audio cable in player audio jack. Set player volume to 90%. Close and secure player cover latches.

For MP3 players such as iPods- Remove bottom thin player insert. Replace with thick player insert, followed by medium player insert with cutouts. This raises player so controls will operate through the clear film. Insert audio cable in player audio jack, routing cable BETWEEN layers of insert. Store excess cable under base.

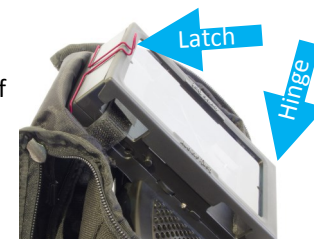


For other players- 1. **Connect audio cable:** Route cable either up or down inside channel. Store excess cable under base. 2. **Snug Player:** Remove backing from self adhesive **Install Strips** and place on sides, top and bottom of player base walls creating a snug fit for player. Use multiple layers of **Install Strips** as necessary. 3. **Set Player Height-** Player must be positioned against underside of player cover window when cover is closed in latched position. This allows player controls and touch screen to operate through the clear film. Place 1 or 2 sets of **Install Strips** on floor to raise player. Stack several **Install Strips** as necessary.



OPERATION

1. Open player cover. With the Jam-Pac amp turned off, plug the audio cable into the headphone jack of player and install player under hinged cover per 'PLAYER INSTALL' instructions. Dress excess audio cable into space under player deck.
2. Set player volume high on player, around 90% to 95% level.
3. Close player cover and secure latch.
4. Recharge player BEFORE EACH USE using the supplied Lithium Ion charger by inserting the charger cable into the side opening shown. **ONLY USE AUDIBLE RUSH SUPPLIED CHARGERS** as safety circuits are included to prevent battery overload and possible property damage from overcharged Lithium Ion cells. When connected to the Jam-Pac, the charger lights red while active and turns green when battery is full. It will take 2-4 hours to reach full charge.
5. Slide Jam-Pac into mount and unzip cover. Fold cover as shown and secure in place with bag side buckles. Buckles can be adjusted to hold the cover tight against bag front.
6. Press the on/off button momentarily. LED lights green indicating amp is on. If no music plays for about 30 minutes, the unit will shut off to save battery power.
7. Use Jam-Pac thumbwheel to set desired volume level.
8. In the event of rain, pull over, zip cover closed and continue listening.



USB PLAYER CHARGER OPERATION

- a. Using a toothpick or paper clip, slide the USB CHARGER MODE SWITCH according to your player: A= Apple products, B=all others. Position C is reserved for future use.
- b. Attach USB cable (supplied with your smartphone charger) to Jam-Pac USB power port. Dress cable between into lower storage compartment. Bring cable back up from compartment and plug into phone's charger port, leaving excess cable in lower compartment.
- c. **With Jam-Pac off, and USB charger connected to player, hold on/off button for about 10 seconds or until your player indicates it is receiving a charge.** The USB charger will automatically shut down after about 30 minutes. To restart the charger, simply power Jam-Pac off and again, hold on/off button for 10 seconds. This can be repeated as desired.

