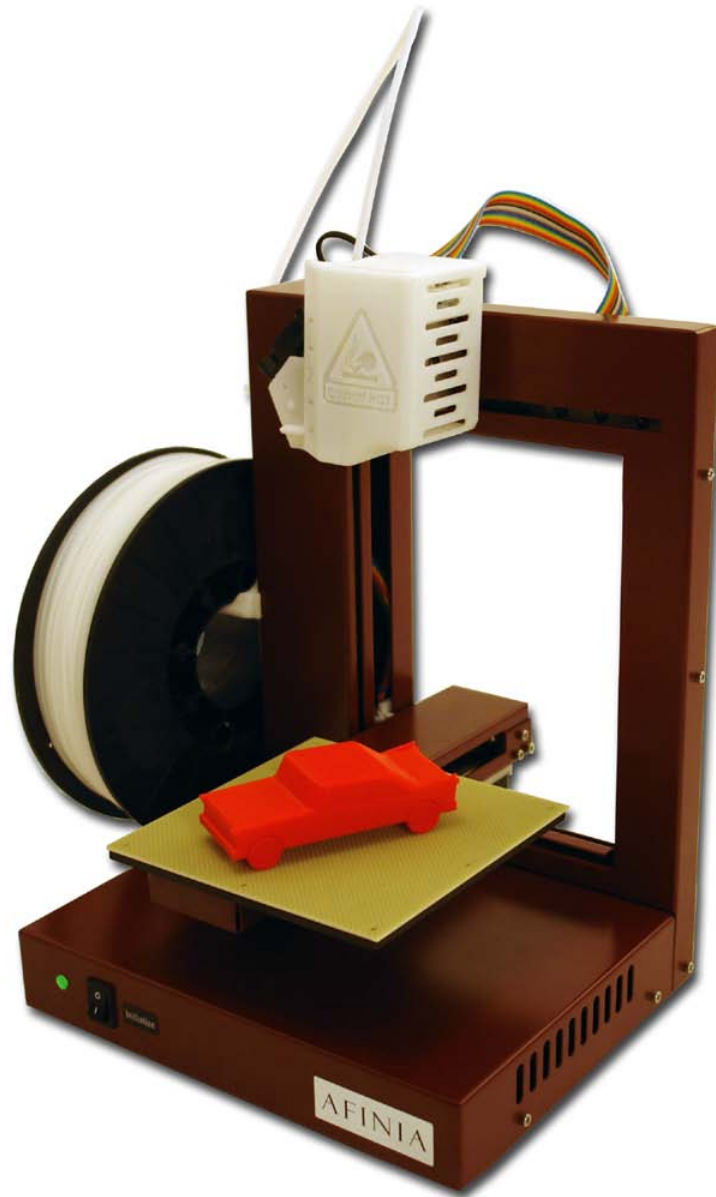


AFINIA



H-Series 3D Printer

Version 1.1

TABLE OF CONTENTS

Introduction	5
Safety Precautions	5
Protection	5
Overview	6
Unpacking the Afinia H-Series 3D Printer	7
Installing the Afinia H-Series 3D Printer	8
Attaching the Filament Spool.....	8
Driver and Software Installation	9
Installing the Printer	9
Loading the Print Material Filament	10
Getting Ready to Print	11
Preparing the Platform.....	11
Starting the Afinia 3D Program	12
Initializing the Printer	12
Leveling the Print Platform.....	13
Calibrating the Nozzle Height	13
Other Maintenance Options.....	14
Printing with the H-Series 3D Printer	16
Loading a 3D Model	16
View Options	17
Model Transformations	18
Placing Models onto the Build Platform	19
Print Setup Options	20
Printing	23
Print Options.....	23
3D Model Removal	25
Removing Support Material	26
3D Printer Maintenance	27
Changing the Filament/Spool	27
Vertical Calibration.....	27
Cleaning the Nozzle	28
Removing / Changing the Nozzle	29
Cleaning the Platform	29
Lubrication of Bearings.....	29
Spare Parts.....	29
Tips & Tricks.....	30
Status Indicator	30
Troubleshooting	31
Solution for "Winusb.dll not found" problem (Windows).....	31
Specifications.....	33
Printer Physical Characteristics	33
Specifications	33
Environmental specifications	33
Technical Support.....	34

FCC ID: 026-H479

This device complies with Part 15 of the FCC Rules. Operation is subject to the following two conditions: (1) this device may not cause harmful interference, and (2) this device must accept any interference received, including interference that may cause undesired operation.

Changes or modifications not expressly approved by the party responsible for compliance could void the user's authority to operate the equipment.

NOTE: This equipment has been tested and found to comply with the limits for a Class B digital device, pursuant to Part 15 of the FCC Rules. These limits are designed to provide reasonable protection against harmful interference in a residential installation. This equipment generates, uses, and can radiate radio frequency energy and, if not installed and used in accordance with the instructions, may cause harmful interference to radio communications. However, there is no guarantee that interference will not occur in a particular installation. If this equipment does cause harmful interference to radio or television reception, which can be determined by turning the equipment off and on, the user is encouraged to try to correct the interference by one or more of the following measures:

- Reorient or relocate the receiving antenna.
- Increase the separation between the equipment and receiver.
- Connect the equipment into an outlet on a circuit different from that to which the receiver is connected.
- Consult the dealer or an experienced radio/TV technician for help.

Introduction





Congratulations on purchasing an Afinia H-Series 3D Printer. The Afinia H-Series 3D Printer is designed with ultimate portability and simplicity in mind. The system and software allow you to print great models in a few easy steps, even if you have never used a 3D printer before. The Afinia H-Series 3D printer combines years of experience and innovation to make printing 3D models easy through its reliably simple hardware and software design.

Safety Precautions

Please read this section carefully before using the printer.

- The printer can only be used with the power adapters supplied by Afinia, or the product may be damaged, with a risk of fire.
- To avoid burning or model deformation, do not touch the model, nozzle, or the platform by hand or any other part of the body while the printer is working or immediately after it has finished printing.
- Protective glasses should always be worn when removing support material, especially PLA.
- The brown sections of the currently supplied gloves melt at around 200° C; please do not hold the extruder block with the gloves.
- There is a slight smell from ABS when it is being extruded. A well-ventilated room is recommended; however when printing, keep the printer away from any drafts as this can affect the warping of ABS prints.
- When ABS is burnt it releases toxic fumes. Never set the nozzle temperature high enough to burn the material.

The following classifications are used in this manual:

	CAUTION: Indicates a potentially hazardous situation which, if not avoided, may result in minor or moderate injury.
	WARNING: Indicates a potentially hazardous situation which, if not avoided, may result in serious injury.
	GLOVES: When performing certain maintenance procedures, the machine may be hot and gloves are required to avoid burns.
	SAFETY GLASSES: Wear safety glasses to avoid injury to your eyes.

Protection

- The printer must not be exposed to water or rain, or damage may occur.
- Do not shut down the Afinia H-Series 3D Printer or pull out the USB cable when loading a digital model or the model data may be lost.
- When using the "Extrude" function, keep at least 50mm between the nozzle and the platform. If too close, the nozzle may get blocked.
- The printer is designed to work properly at an ambient temperature of between 60°F and 85°F and humidity of between 20% and 50%. Operating outside these limits may result in low quality models.

Overview

The Afinia H-Series 3D Printer primarily consists of the Extruder, Print Platform, Material Spool, and Filament, all supported by the Pedestal. The Printer is initialized with a single switch, and calibrating the position of the print platform is done using the included Afinia software.

The Afinia 3D software sends the print data from a Mac or PC to the Printer over a single USB cable. The Print Platform moves both vertically and front-to-back while the Extruder moves left-to-right, providing the necessary 3 axes of operation (see Figure 2). The Extruder delivers the Filament from the Material Spool into the Nozzle, which heats the filament to printing temperature and deposits it on the Platform.

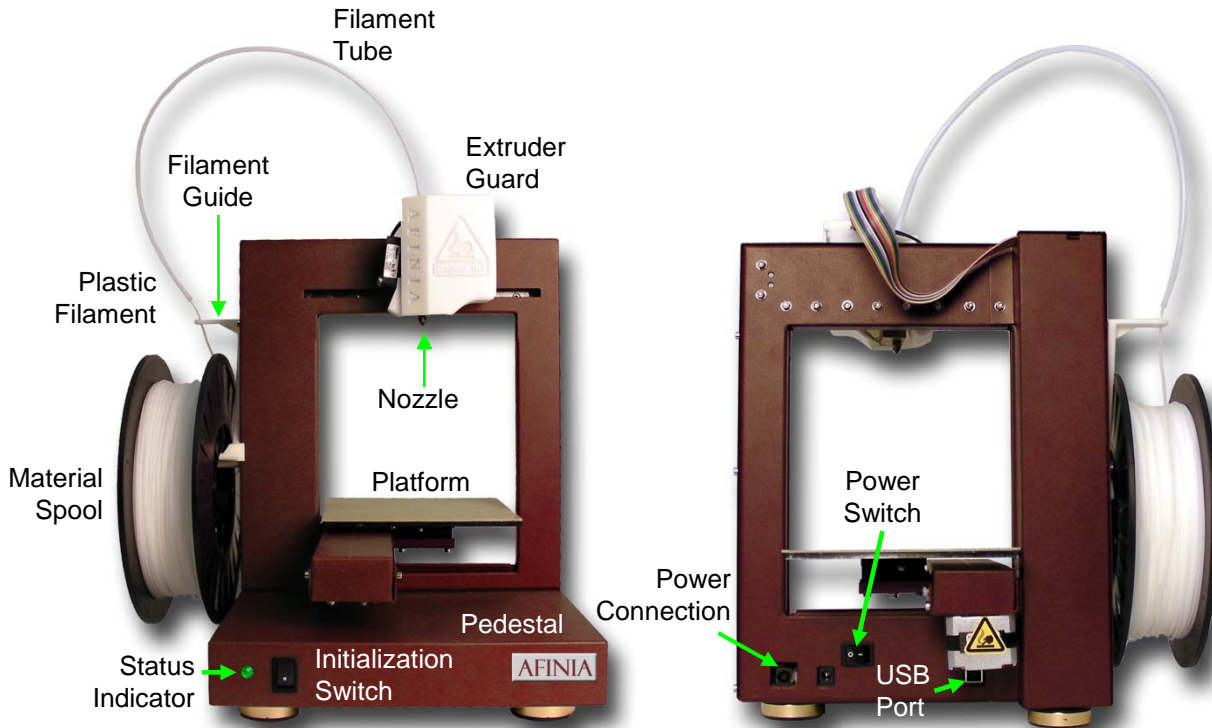
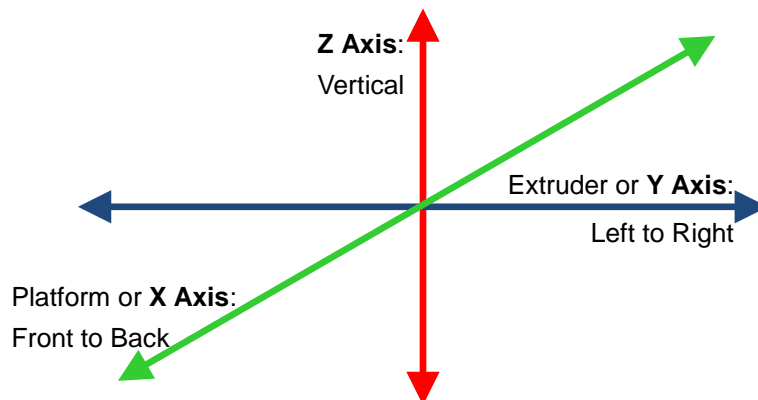


Figure 1: Front and Back views of the Afinia H-Series 3D Printer

Figure 2: Axes of Operation

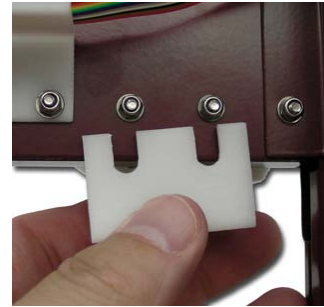


Unpacking the Afinia H-Series 3D Printer

Remove the Installation Disc, Manual, Quick Start Guide, and Accessories Pack from the box. Next, lift the Afinia H-Series 3D printer from the box. Remove the foam from both sides of the Printer and set the Printer on its base with the back of the Printer facing you.

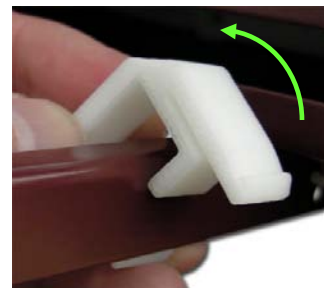
There are 2 packaging clips that protect the Printer during shipping that need to be removed. ***Both clips should be saved in the event that you need to ship the Printer in the future!***

The first clip to be removed is used to hold the Extruder assembly in place during shipping. Carefully peel the strapping tape down, and then slide the clip down and off the Printer.



The second clip is used to help keep the Platform Arm secure during shipping. To remove the clip, place your hand under the platform X-axis arm and gently lift. Do not lift the arm by holding onto the platform!

Once the platform arm has been lifted a few inches, rotate the top of the clip towards the front of the printer. Once in the correct position, the clip will slip over the Z-axis arm.



Next, open and check the contents of the Accessory Pack:

- Reel of Filament (1, Natural)
- Power Supply
- Power Cable
- USB Cable
- FR-4 (Perf) Board (3)
- FR-4 Board Clips (6)
- FR-4 Board Cleaning Tool (3)
- Filament Guide Tube
- Filament Hanger
- Nozzle Wrench
- Hex Wrenches
- Spare screws & washers
- Gloves (1 pair)
- Putty Knife
- Exacto Knife and blades
- Snipping Pliers
- Tweezers

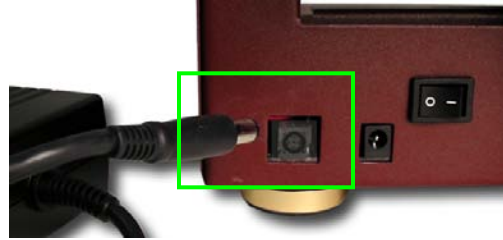
You will need the Power Supply and Cable, Hex Wrenches, Filament Spool, Filament Hanger, Filament Tube, and USB Cable to complete the Afinia H-Series 3D Printer installation.

Installing the Afinia H-Series 3D Printer

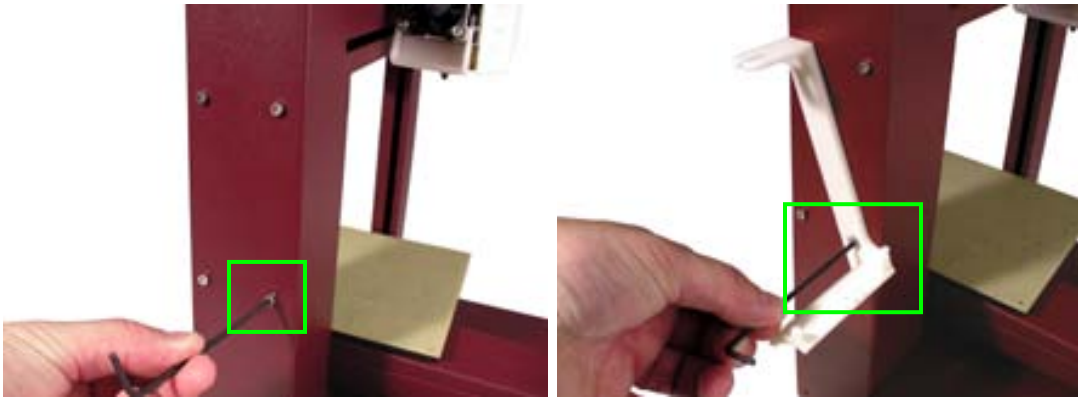
Attaching the Filament Spool

Attach the Filament Spool with these steps:

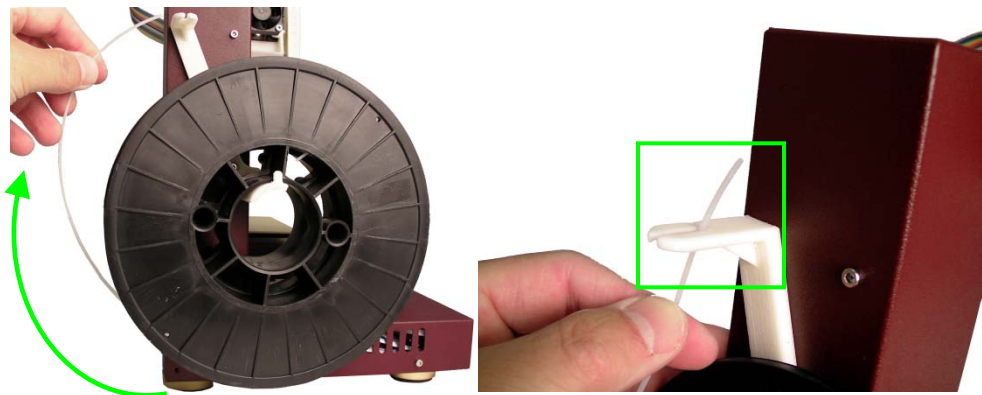
- A. Connect the power adapter to the power interface and turn on the power switch.



- B. Install the ABS plastic spool holder and filament guide. Unscrew the lower right screw from the left side of the Printer. Use this same screw to attach the spool holder with the bottom right lip of the spool holder locked onto the printer's corner and the top of the holder mounted over the upper left screw.



- C. Put the ABS Material Spool onto the holder with the end of the filament pointing up from the back. Thread the filament through the Filament Guide at the top of the spool holder.



- D. Insert the end of filament into one end of the Filament tube. Feed the filament through the tube until about 4 inches of filament protrudes from the tube.

Driver and Software Installation

Mac

Insert the Installation Disc into your Mac. Open the disc, go into the **Mac** folder, and double-click the **Afinia Mac Setup.pkg** icon. Follow the prompts through the installation. The drivers will be added and the Afinia 3D Software will be installed to the **Applications** folder.

Windows

Insert the Installation Disc into your PC. If the installer does not launch automatically, start the Afinia H-Series 3D Printer **setup.exe** file in the **PC** directory on the installation disc and install to the specified directory (default is **Program files\Afinia\Afinia 3D Printer**).

Note: This installs the Afinia H-Series 3D Printer software, the Afinia H-Series 3D Printer drivers, and the Afinia H-Series 3D Printer sample files into your **Program files\Afinia\Afinia 3D Printer** folder.

Follow the instructions in the Installer to be sure the drivers and software are all in place before attempting to use the Printer. The instructions below will follow the same order as those in the Installer.

Installing the Printer

Mac

Simply connect the Printer to your Mac using the USB connection on the back of the Printer.

USB Connection



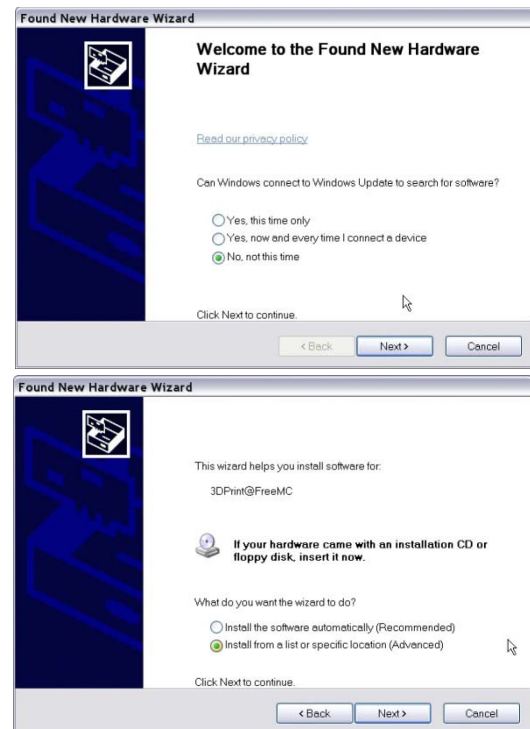
Windows Vista, and Windows 7

As part of the installation, the 3D Printer drivers are pre-installed and you will be prompted to connect the Printer to your PC. The Printer will be recognized and automatically installed when it is connected to your PC.

Windows XP

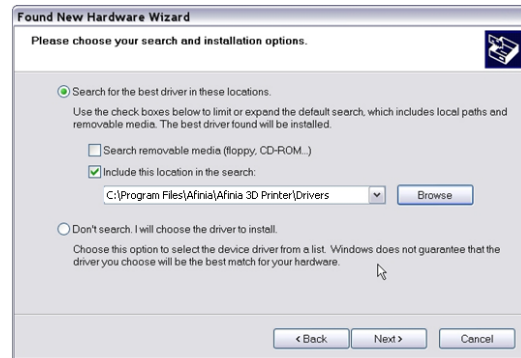
Since XP does not have the driver pre-installation ability, the drivers must be manually installed when the Printer is connected to the PC. Follow these steps:

- A. Connect the printer to a computer with the USB cable. If the computer displays the "Found New Hardware Wizard" window, choose **No, not this time**, and click the **Next** button.
- B. Choose **Install from a list or specific location (Advanced)** and click **Next**.

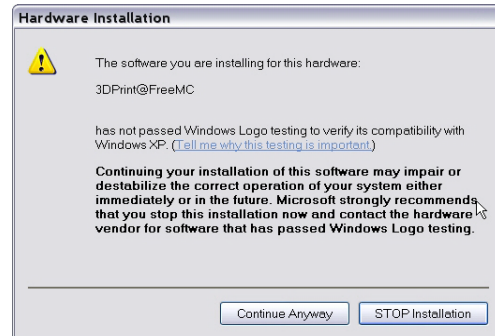


- C. Select the option to **Search removable media**; the drivers are located on the installation disc.

If you are installing from a download, click **Browse**, then navigate to **C:\Program files\Afinia\Afinia 3D Printer\Driver**, then **Next**.



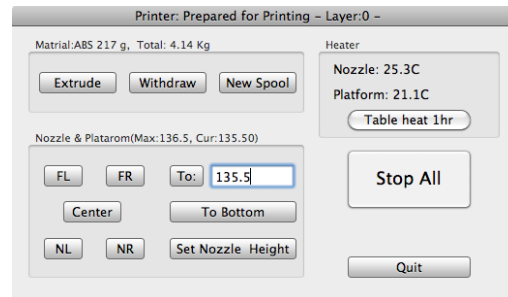
- D. If the following dialog box appears, click **Continue Anyway**, and the drivers will install automatically.



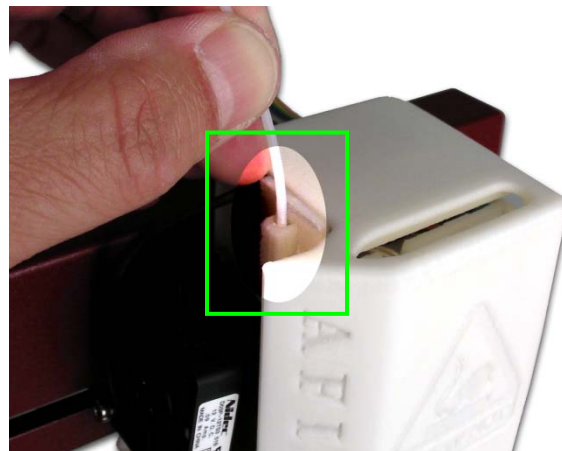
Loading the Print Material Filament

This process will be the same on both Mac and Windows.

- A. Start the Afinia H-Series 3D Software (refer to the software install procedure if you have not already installed it), and select **Maintenance** from the **3D Print** menu. Click the **Extrude** button. After the printer nozzle has warmed up to 260° C, the printer will beep; you can also monitor the nozzle temperature in the **Maintenance** window.



- B. Once the nozzle is heated, push the filament into the hole at the top of the extruder head and hold it there with gentle pressure until the extruder motor starts pulling it through the extrusion head. The extruder will extrude a thin filament of material for a short period of time.



Getting Ready to Print

Preparing the Platform

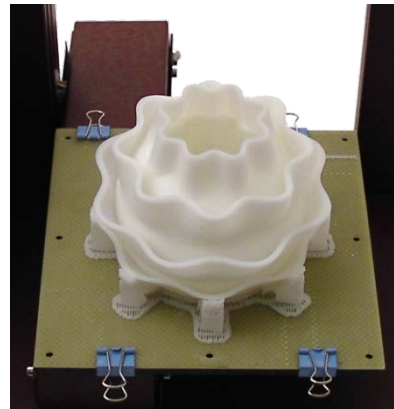
Before you start printing, the platform must be prepared so that the model adheres to the platform enough to be printed without the model moving. At the same time, you will want the model to be easy to remove from the platform after printing. There are several options for preparing the platform:

FR-4 Board (Glass-reinforced Epoxy Laminate)

Many users have reported excellent results by using a piece of FR-4 Board to cover the build platform. FR-4 Board is a perforated, glass-reinforced epoxy laminate sheet.

When using FR-4 Board, the first layer of the raft pushes plastic into all the perforations, and this provides a strong mechanical bond with the surface that prevents it from later lifting. The FR-4 Board can be either taped down (with masking tape or double-sided tape), or clipped to the platform as shown in the picture to the right. Make sure the clips are on the front and back of the platform only to avoid interfering with the platform movement!

It can be easier to remove the model from the FR-4 Board after the model has cooled down. As the plastic cools, it shrinks away from the perforations, which make it easier to pull out.

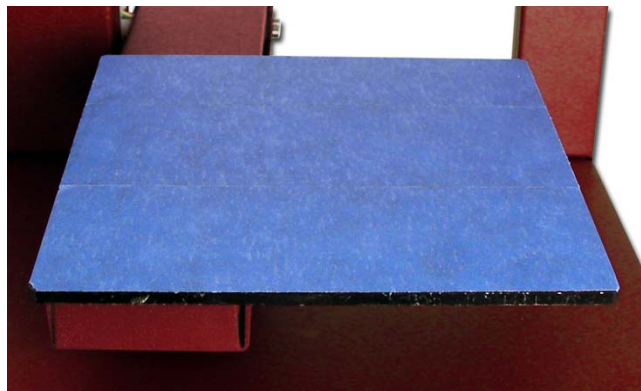


Some FR-4 Boards may work better than others. For consistent printing, it is recommended that you use the FR-4 Board included with the Printer.

Blue Masking Tape

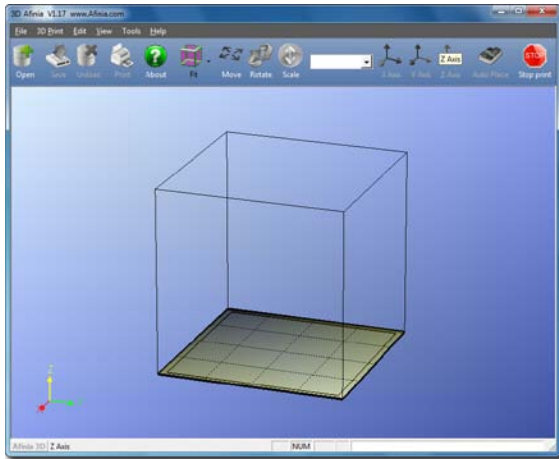
Many users have reported successfully using Blue Masking Tape as a platform surface. Simply cover the platform with a layer of blue masking tape with as little overlap as possible and print onto the tape. Replace the tape when it wears out.

Whichever platform preparation method you use, the two factors that most reduce the risk of warping on large prints are ensuring that the platform is well leveled and well pre-heated.

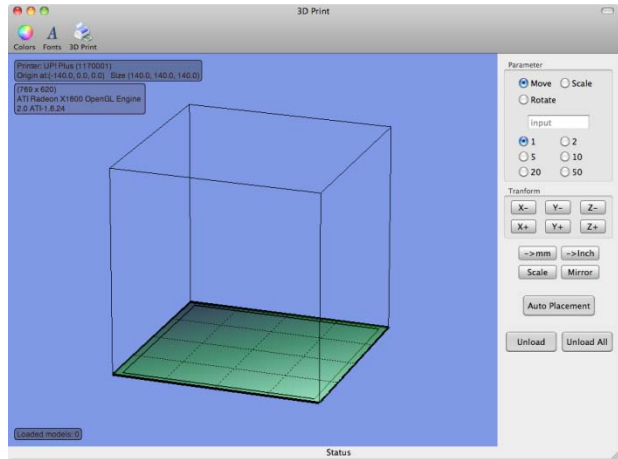


Starting the Afinia 3D Software

If the application is not already open, click the Afinia 3D icon on the desktop (Windows) or in the Applications folder (Mac). The software should open and appear as shown below:



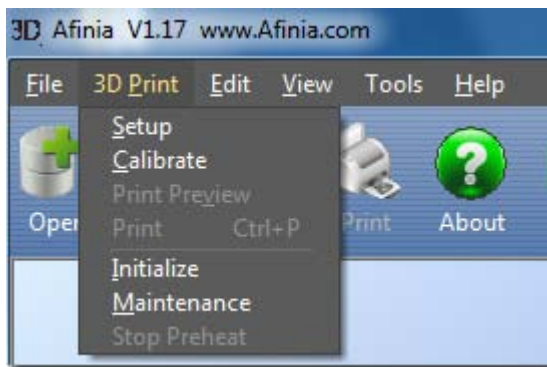
Windows version



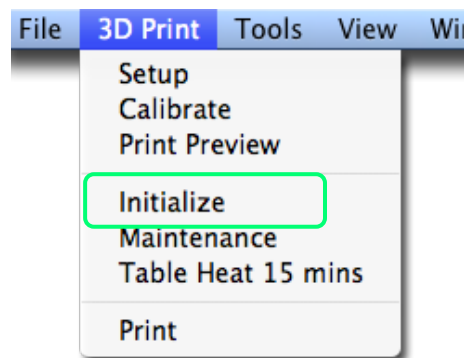
Mac version

Initializing the 3D Printer

Before anything can be printed, the printer must be initialized. Click the **Initialize** option from the **3D Print** menu. The printer will beep and the initialization procedure will begin. The printer will then return the platform and print head to the printer's origin and beep again when it is ready.



Windows version



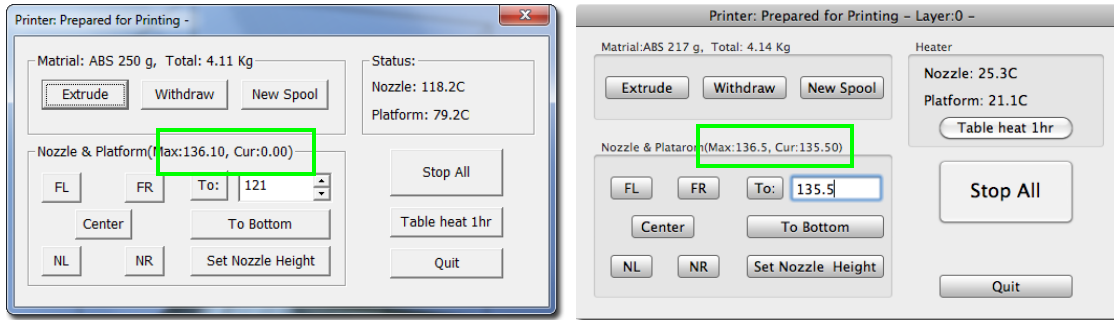
Mac version

The front Initialization Switch can also be used for initialization. Hold down the Initialization Switch for one second to trigger the initialization procedure. The printer will beep and the initialization procedure will begin. The printer will then return the platform and print head to the printer's origin and beep again when it is ready.

TIP: If your printer is not responding properly, the first thing to try is to re-initialize the printer by clicking the **Initialize** option from the **3D Print** menu.

Leveling the Print Platform

Before calibrating the nozzle height, always check the vertical nozzle distance from each corner and center of the print platform. Open the **Maintenance** dialog box from the **3D Print** menu.



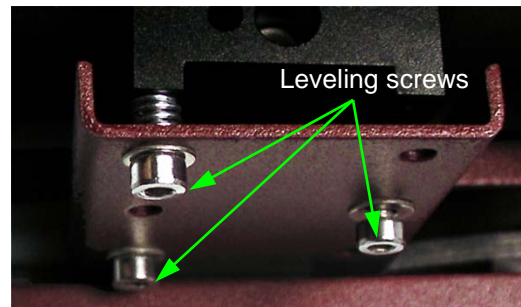
If you already know the nozzle height, enter that height minus 1.8mm in the **To:** box, then click the **To:** button. If your nozzle height is 135.3, for example, enter **133.5**.

If you do not yet know the nozzle height, Click the **To:** button to bring the platform to the displayed height, then slowly increment the height until the platform is about 2 mm from the nozzle, clicking **To:** after each increase.

Use the five position buttons to check that the platform at all four corners and the center are the same distance from the nozzle.

If the platform is not the same distance from the nozzle at all five points, you will need to adjust the platform until it is level. There are 3 screws under the platform that are used to level the platform.

Loosening a screw will raise the related corner of the platform, while tightening the screw will lower the same part of the platform. Adjust the screws as needed until all four corners and center of platform are the same vertical distance from the nozzle.



Always recalibrate the nozzle height after leveling the platform.

Calibrating the Nozzle Height

This section is probably the most important of the entire manual. Please read it carefully to ensure that you understand the nozzle height setup procedure, as it is vital to successful 3D printing.

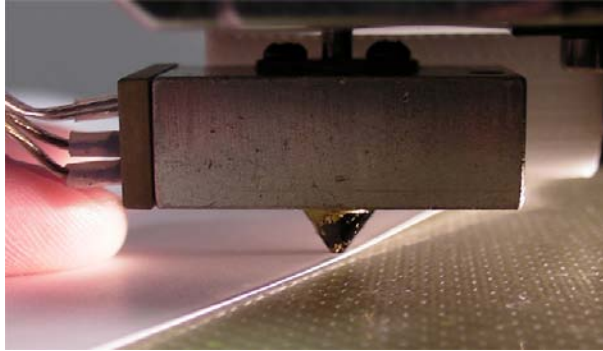
To print successfully, the platform should be set to start at a distance of 0.2mm from the nozzle. As each printer is slightly different, this distance needs to be calibrated before starting to print.

To determine the correct nozzle distance, please follow these steps:

1. Open the **Maintenance** dialog box from the **3D Print** menu and click the **Center** button. The current nozzle height is indicated as shown in the **Maintenance** dialog images above. In the Windows example, the platform is currently at the bottom of the printer; the Mac example has the platform 135.5mm from the bottom.
2. Enter the height to which you want the platform to move to into the textbox and click the **To** button. In the above Windows example, the platform will move to **121** mm above the platform's origin. In the Mac example, the platform is already at the height selected.
3. Check the distance between the nozzle and the platform. If the platform is currently at 121mm and appears to be about 12mm away from the nozzle, change the number in the text box to by 9mm to **130** and click the **To** button. Use small increments from there when calibrating the nozzle to avoid striking the platform into the nozzle.

4. Once you are about 1mm away from the nozzle, increase the number in the text box by 0.1mm increments and click the **To** button. Repeat until you get 0.2mm from the nozzle.

TIP: An easy way to check the distance between the nozzle and platform is to fold a piece of paper in two, which will be about 0.2mm thick. Use this as a spacer to gauge the distance between the nozzle and platform.



5. Once you have the platform within 0.2mm of the nozzle, click the **Set Nozzle Height** button to save the current nozzle height.
6. Check the nozzle height at all four corners of the platform. Repeat the Platform Leveling and Nozzle Height Calibration processes if needed.

You may need to recalibrate the nozzle height after moving the printer or changing the printing platform if you find the models are not adhering to the platform properly or are warping.

TIP: If you crash the platform into the nozzle while making height adjustments, it is good practice to re-initialize the printer, before undertaking any other operations.

Other Maintenance Options

Extrude

Squeezes material out of the nozzle. Click this button, and the nozzle is heated. When the temperature is high enough (260° C), the material is squeezed out of the nozzle. The system beeps before material starts extruding, and it beeps again when finished. When changing the material (see page 27), use this function to load the new material to the nozzle. It can also be used to test whether the nozzle is working correctly.

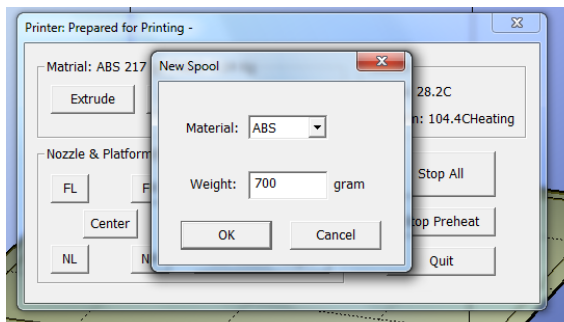
Withdraw

When the material runs out, or the nozzle needs to be changed, click this button. Once the nozzle is up to temperature (260°C) and the printer beeps, gently pull out the material.

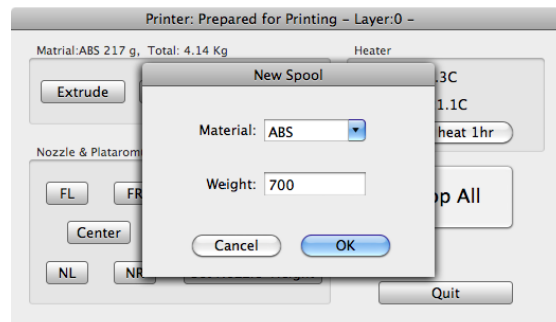
New Spool

The **New Spool** button is used so the software can keep track of how much material has been used, and warn you if you don't have enough material left to print your model.

Click the button and enter the value of how many grams of material you have on the current spool. If it is a new spool, the quantity should be set to 700 grams. You can also specify whether the material you are printing with is ABS or PLA.



Windows version



Mac version

TIP: An empty spool weighs about 280 grams. If you are installing a partially used spool, weigh it, and subtract 280 grams from the weight. Enter that value into the material Weight text box.

Status

This area displays the current temperature of the nozzle and platform and if either element is currently being heated.

Nozzle & Platform Position Controls

The five buttons (**FL**, **FR**, **Center**, **NL**, **NR**) control the position of the nozzle and the platform. The nozzle moves to the left and right; the platform moves forward and backward.

The **To** button controls the height of the platform, and is used in the nozzle height calibration procedure described on page 13.

The **To Bottom** button returns the platform to the lowest position.

Set Nozzle Height

Takes whatever value you have in the **To** box and saves it as the Nozzle height to use during printing.

Stop All

Stops heating and all the movement of the printer. Once you click this button, the current model being printed is cancelled. You **CANNOT** resume a print job once the printer has been stopped. After you use the **Stop All** function, you will need to re-initialize the printer.

Pause Print

This button allows you to pause a print in mid-progress while allowing you to resume the print job where it left off. This is very useful if, for example, you want to change the material color mid-print. Another use for pausing a job mid-print is to allow fasteners to be inserted into printed cavities and then printed over to lock the fastener into place.

This option is only available when the printer is actively printing.

Table Heat 1 hr

Click the **Table Heat 1 hr** button to heat the table to 105° C for a full hour.

Stop Preheat (Windows) / Stop Heat (Mac)

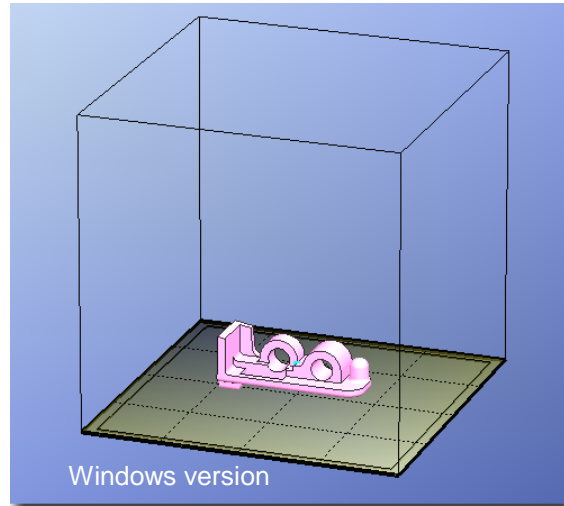
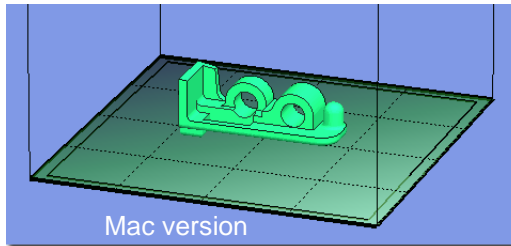
This button will halt any heating of the table, either the 1 hour heat or the 15 minute preheat from the 3D Print menu. This option only appears when the table is actively being heated by one of these two operations.

Printing with the H-Series 3D Printer



Loading a 3D Model

Click **File / Open** or the **Open** icon on the toolbar (Windows only) and select the model you want to open. The Afinia 3D Printer software only supports **STL** files (which is the standard input format for 3D printing files) and the **UP3** format.

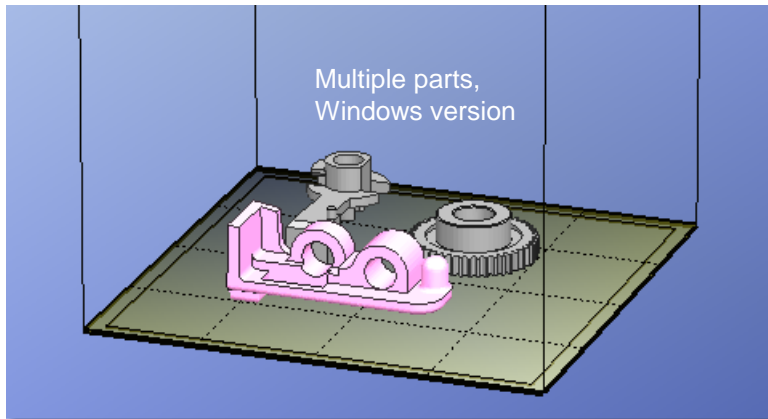


You can open several models and print them all at the same time. Simply repeat the open model procedure for each model you want to add (see **Placing Models onto the Build Platform**, page 19, for more information).

Insert Copy

You can also add multiple copies of the same model to the platform by selecting **Insert Copy** from the right-click options (Windows) or by selecting **Copy** from the **Tools** menu. Select the number of copies from the list.

You will need to reposition the models after the copies have been added.

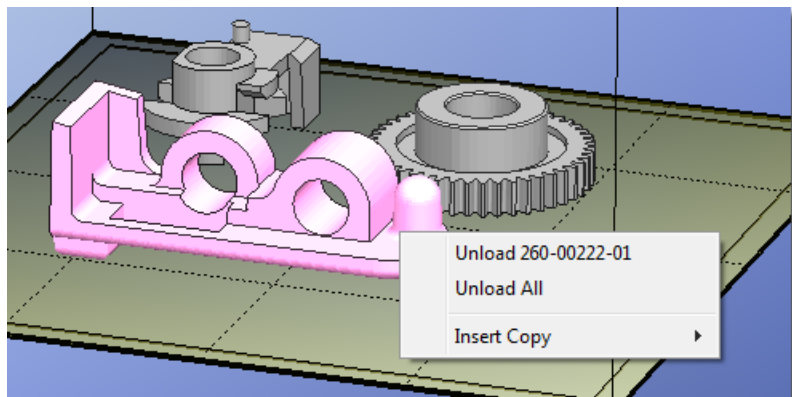


Unloading the Model, Windows

Click the left mouse button on the model to select it, and then click **Unload** on the toolbar, or click the right mouse button while over the model and a context menu will appear. Choose **Unload** using the model name or **Unload All** models if you have more than one file open and want to remove all of them.

Unloading the Model, Mac

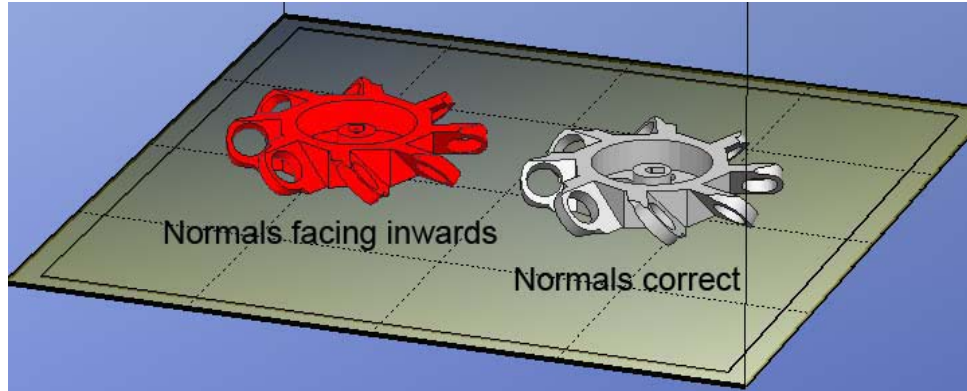
Use either the **Unload** or **Unload All** button in the right tool pane. Click the **Unload** button to remove the currently selected model, or **Unload All** to clear all models from the workspace.



Saving the model

Choose the model and select **Save** from the **File** menu. The file is saved in UP3 format with the file size being 13%-18% of the original STL file size. This is a convenient format for users to archive or transfer files.

Note on STL files: For a model to print correctly, all the faces of the models need to have their normal facing outwards. The Afinia H-Series 3D Printer Software uses model color to indicate whether a model is OK or not. The default color used by the software when opening a model is a light grey/pink color. If the normal are facing the wrong way, then the model is colored in red.

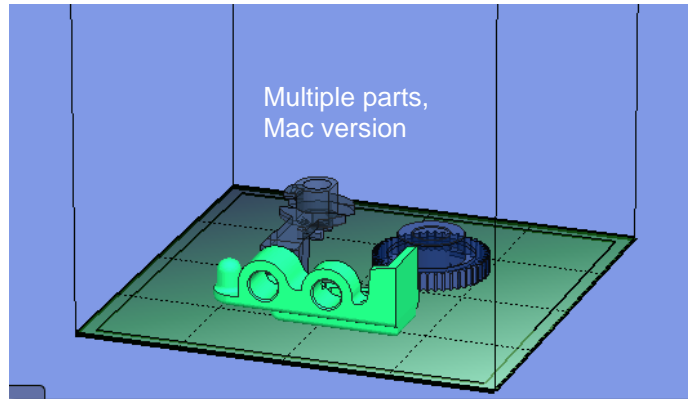


Fixing STL Files

The Afinia 3D Printer software includes a Fix option that attempts to fix any model that includes bad surfaces. Under the **Edit** menu in Windows you will see the **Fix** option, and under the **Tools** menu in Mac will be the **Autofix** option. Select the model with inverted surfaces, and click the **Fix** or **Autofix** option to attempt a repair of the bad surfaces.

Merging Models

If you have loaded more than one part onto the platform, you can combine them into a single file by using the **Merge** option from the **Edit** menu in Windows or the **Tools** menu in Mac. Simply open all the models you want to merge, arrange them the way you want on the platform, and click the **Merge** option. When you then save the file, all the components will be saved as a single STL file.



View Options

To observe the target model in different ways, use the mouse to control the view.

Rotate

Press the middle mouse button and move the mouse. The view can be rotated and observed from different angles.

Pan

Press Ctrl and the middle mouse button at the same time and move the mouse. This causes the view to pan. You can also use the arrow keys to pan the view.

Scale

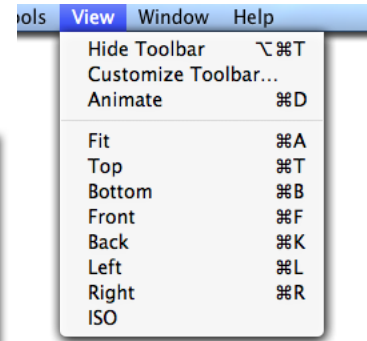
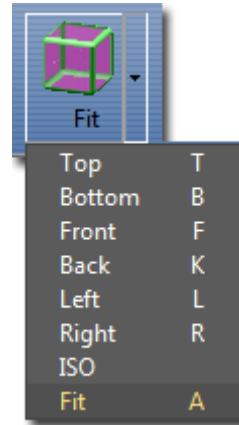
Rotate the mouse wheel. The view will zoom in or out.

View

The system has eight preset standard views available, with the default view being **Fit**. Click the **View** button on the toolbar (Windows) or the **View** menu to select the View options.

After selecting an option, the caption under the View button will show the selected view name.

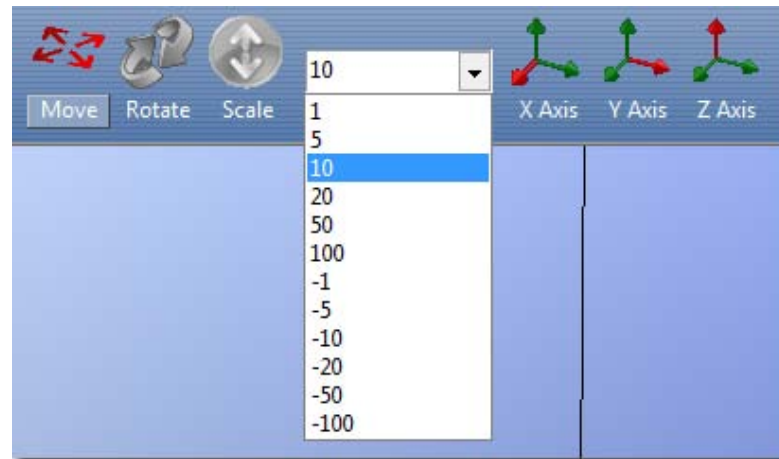
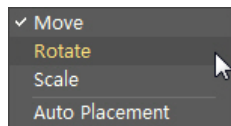
Windows version



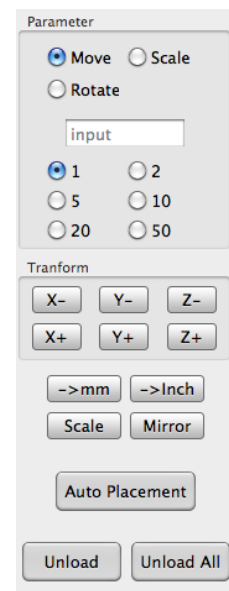
Mac version

Model Transformations

Model Transformation can be achieved through the Edit menu or the toolbar:



Windows version



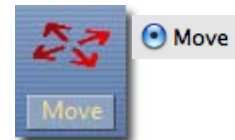
Mac version

Moving the Model

Click the **Move** button and choose or input the distance you want to move into the text box. Then choose the axis (direction) in which you want to move. Each time you click the axis button the model will move again.

For example: To move the model -5mm along Z axis (or down 5mm):

Windows	Mac
<ol style="list-style-type: none"> Click Move Input -5 in the text box Click the Z axis button 	<ol style="list-style-type: none"> Select the Move option Input 5 in the text box Click the Z- button

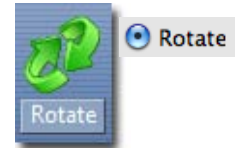


Windows TIP: If you hold down the **Ctrl** key, you can drag the model to a position.

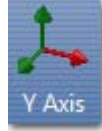
Rotating the Model

Click the **Rotate** button on the toolbar, choose or input how many degrees you want to rotate in the text box, and then choose the axis of rotation.

For example: To rotate the model around Y axis by 30°.



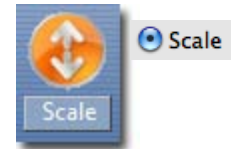
Windows	Mac
<ol style="list-style-type: none"> 1. Click Rotate 2. Input 30 in the text box 3. Click the Y axis button 	<ol style="list-style-type: none"> 1. Select the Rotate option 2. Input 30 in the text box 3. Click the Y+ button.



Tip: Positive numbers rotate the model counterclockwise; negative numbers rotate the model clockwise.

Scaling the Model

Click the **Scale** button on the toolbar, choose or input a scaling factor in the text box, and then scale the model uniformly by applying that scaling factor. If you only want to scale along one axis, click the axis around which you want the change to be applied.



Example 1: Scale up the model uniformly by 2.0 times.

Windows	Mac
<ol style="list-style-type: none"> 1. Click Scale 2. Input 2.0 in the text box 3. Click the Scale button 	<ol style="list-style-type: none"> 1. Select the Scale option 2. Input 2.0 in the text box 3. Click the Scale button



Example 2: Scale up the model by 1.2 times along the Z axis only.

Windows	Mac
<ol style="list-style-type: none"> 1. Click Scale 2. Input 1.2 in the text box 3. Click the Z Axis button 	<ol style="list-style-type: none"> 1. Select the Scale option 2. Input 1.2 in the text box 3. Click the Z+ button



Placing Models onto the Build Platform

Appropriately placing your models on the platform can have an effect on print quality.

TIP: In general, try to place your model in the center of the platform.

Auto Place

Click the **Auto Place** button, on the far right of the toolbar, to automatically place the model on the platform. When there is more than one model on the platform, using Auto Place is recommended.

By Hand (Windows)

Press the **Ctrl** key and choose the target model by pressing and holding the left mouse button. Move the mouse and drag the model to the desired position.

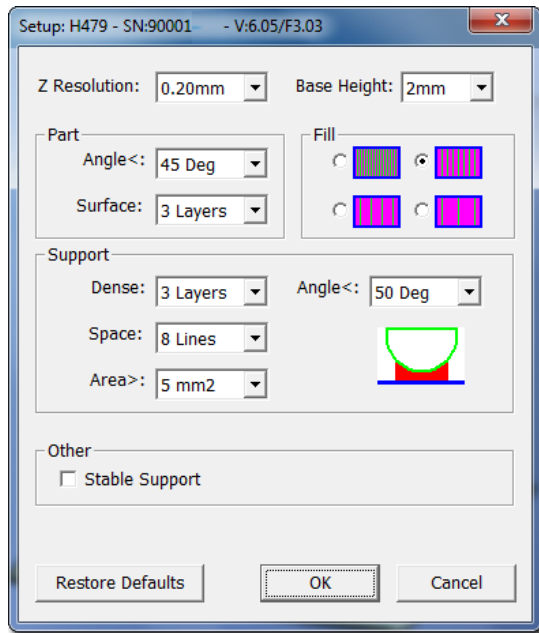
Using the Move button

Click the **Move** button (Windows) or the **Move** parameter (Mac) on the toolbar, choose or input the distance in the text box, and then choose the axis for the direction in which you want to move.

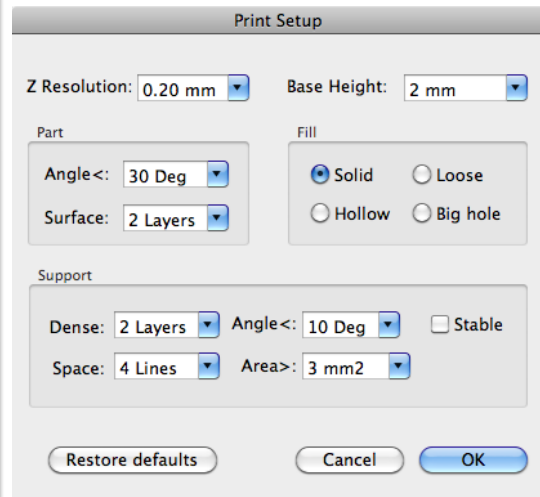
NOTE: When more than one model is open, the gap between each model should be kept to at least 12mm to prevent the models sticking together.

Print Setup Options

Click the **Setup** option in the **3D Print** menu. The following dialog box pops up:



Windows version



Mac version

Print Settings

Z Resolution

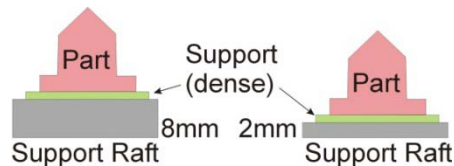
This setting specifies the print resolution or layer thickness of the printer. Options are **0.2mm** to **0.4mm** per layer, in 0.05mm increments.

Base Height

This sets the thickness of the Support Raft before the support layer is printed under the part.

The printer starts with a raft of non-solid material in which all the lines of support material are printed along the Y-axis. Layers of support material are built up for as many millimeters as you have specified. It is on this Support Raft that the first layers of dense support are printed along the X-axis; the model itself is printed on top of the dense support material.

The default value for this setting is **2mm**.



Part Settings

Angle

The Part Angle determines at what point solid (dense) support material gets used. If the angle is smaller than the selected setting, the printer will add solid fill layers under the part surface. The thickness of this solid (dense) support is determined by the "dense" parameter under the Support options as described below.





Surface

This setting determines how many layers form the bottom face of a part when it is not solid. For example, if you set it to **3**, the machine will print 3 complete layers before going into non-solid mode.

This does not affect the side wall thickness on non-solid parts, which are all the same thickness (approximately 1.5mm) regardless of the fill mode.

Fill Settings

There are four ways to fill the interior of the parts, as described below.

<p>The part is nearly solid plastic, giving you the strongest structure. This Fill setting is recommended for functional engineering parts.</p> <p>Mac setting: Solid</p> 	<p>The interior of the part is filled with a reasonably small scaffold structure. This is the default Fill setting.</p> <p>Mac setting: Loose</p> 
<p>Mac setting: Hollow</p>  <p>The interior of the part is filled with a medium spaced scaffold structure.</p>	<p>Mac setting: Big Hole</p>  <p>The interior of the part is filled with a large spaced scaffold structure, using the least amount of material.</p>



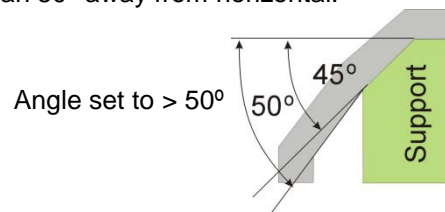
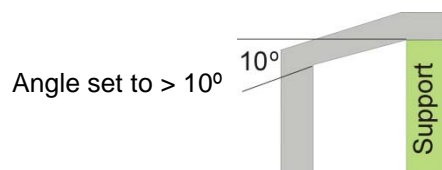
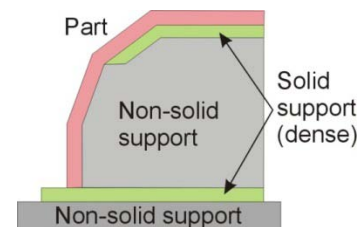
Support Settings

Dense

This represents how many layers of dense support material is printed directly beneath the model. The greater the number of dense support layers, the more stable the print will be but the support will be more difficult to remove.

Angle

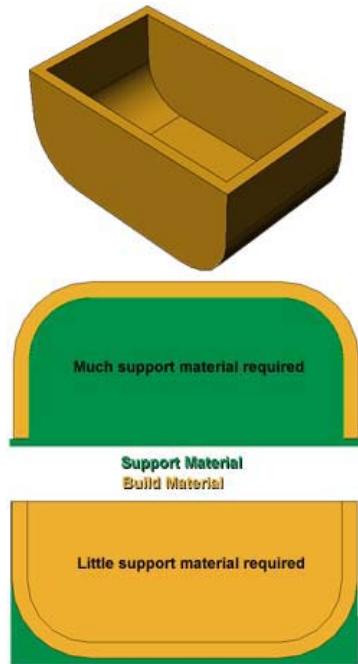
The Support Angle setting specifies the Angle at which support material gets used. For example, if **10°** is selected, support material only gets used if angle of surface is less than 10° from horizontal (so support material is almost not used unless there is a direct overhang). If set to **50°**, support material is used for any surface that is less than 50° away from horizontal.



There is a balance between minimizing the amount of support material and maintaining the quality of the part, as well as minimizing the difficulty of removing support material.

The orientation of the part on the print platform is critical in determining both how much support material gets used and how difficult the support material will be to remove.

As a general rule, it is easier to remove support material from the outside of a part than from the inside. As can be seen in the picture to the right, the part would use a lot more support material if printed with the opening facing downwards than if it were facing upwards.

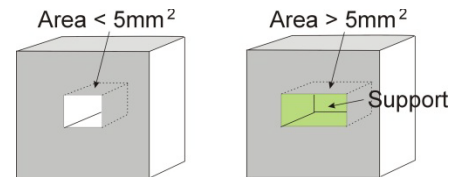


Space

This setting specifies the distance between the lines of non-solid support material. Changing this parameter changes the balance between the quantity of support material used, ease of support material removal, and part print quality. Only advanced users should change the Space setting.

Area

This setting specifies the surface area above which support material gets used. When you choose **5mm²**, for example, there will be no support if the overhanging area is less than 5mm². While a little material is saved and a slightly faster print speed is achieved when this setting is increased, the stability of the part may be reduced during printing.



Other Settings

Stable Support

Stable Support creates support that is more solid, and the model is less likely to distort, but the support material will be more difficult to remove.

TIP: All setup and configuration settings aside from the Nozzle Height Calibration are stored in the software, not on the Afinia H-Series 3D Printer. If you move the printer to a different computer, you will need to repeat all the calibration and setup procedures.

Printing

TIP: One of the keys to successful printing on the Afinia H-Series 3D Printer is platform preparation and preheating. Particularly with large parts, there is a tendency for the edges of the part to lift from the platform (which can be a little cooler than the center) and cause the parts to warp. The best results will be achieved if:

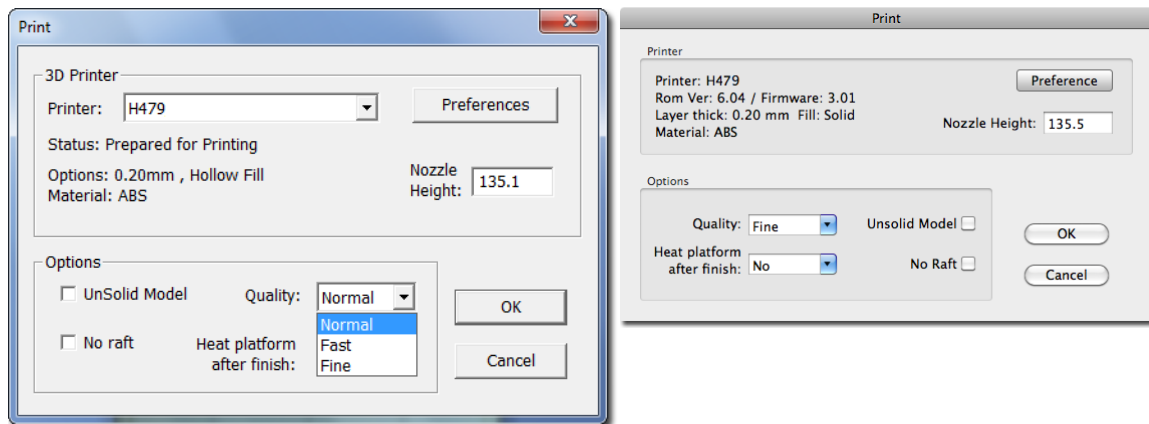
- The platform is perfectly level
- The nozzle height is correctly set
- The printer is being run in a room that is not too cold (warmer than 65° F) and free of drafts
- The platform is very well preheated

Please ensure the following points are taken care of before printing:

Connect the 3D printer, initialize it, and set up the printing system. Load the model and place it properly on the virtual platform of the 3D Software window. Check if there is enough material for the model (the software will, generally, tell you if there is not enough material when you begin the print). If not, change the spool to a new one.

For models over 40mm² in surface area, it is recommended that you preheat the build platform. Click the **Table Preheat 15 k** option in the **3D Print** menu to preheat the platform. Let the platform heat to at least 100°C before beginning to print.

Click **Print** from the **3D Print** menu.



Print Options

Nozzle Height

You can make changes to the Nozzle Height using this setting, but it is not recommended unless you know that the value you are entering in is correct.

If the nozzle is too far from the platform during printing, the material may not adhere correctly to either the platform or to the previous layer.

If the nozzle height is set too high, the platform can raise up into contact with the nozzle itself, potentially damaging the nozzle.

It is recommended that you use the **Calibrate Nozzle Height** process as listed on page 13 to make any changes rather than in the Print dialog.

Quality

Options are **Normal**, **Fast**, or **Fine**. This setting determines the speed at which the printer moves. As a general rule, the slower you print the better the quality of the parts, although there are exceptions to this rule.

For tall parts, running at **Fast** speed can be problematic as the printer can vibrate to the extent that print quality is affected.

For large surface area parts, the **Fine** setting can be problematic as the part takes longer to print and the corners of the raft are more likely to lift from the platform.

UnSolid Model

This function is useful for printing STL files that are not perfect. A perfect STL file is a fully enclosed surface, with no holes in the surface skin, and no overlapping surfaces. If your file is not perfect, this option should allow you to print it anyway.

No Raft

While you can choose to skip the Raft with this option, it is not recommended. The raft adds stability to the adhesion between the part as it is printing and the platform.

Heat Platform After Finish

Checking this option will keep the platform temperature at a higher level after printing is complete. This can make it easier to remove the model from the platform, depending on the platform preparation.

TIP: Once the print has started, you can unplug the PC from the printer. The print job is stored in the printer's internal memory, so the PC is no longer required

Calculating model costs

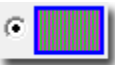
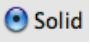

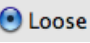

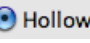

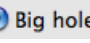
The easiest way to calculate the cost of the material that will be used for your model is to use the **Print Preview** option under the **3D Print** menu. The application will calculate the total weight of material used, including the raft and any support material.

Use the weight from the Print Preview to determine the cost to print the model using the following formula:

$$\text{Cost to Print} = \text{Weight of Model} \times \left(\frac{\text{Cost of Spool}}{\text{Full Filament Weight}} \right)$$

Use the full weight of the filament that you purchased, not the current weight of the spool. For instance, if you purchased a 700g spool of ABS filament, you would divide the cost of the spool by 700g to get the cost per gram of material.

The main factors that affect model cost are the **Fill** and **Support** settings. For example, you are printing a cube measuring 30mm x 30mm x 30mm with a layer thickness of 0.2mm. With the Support settings left at their default values, the following quantities of material will be used for each of the four **Fill** settings:

PC Fill Setting	Mac Fill Setting	Weight of Model
	 Solid	17.2 g
	 Loose	12.0 g
	 Hollow	9.4 g
	 Big hole	8.5 g

In this instance, the model printed at the lowest density Fill setting will be about half the cost as printing it at the highest density Fill setting, but that ratio does not apply to all models. Each model will have a different relationship between the amount of material used and the Fill and Support settings. Always run a Print Preview if you are calculating the printing costs of any given model.

3D Model Removal

When the model has finished printing, the printer will beep, and the nozzle and platform stop heating.

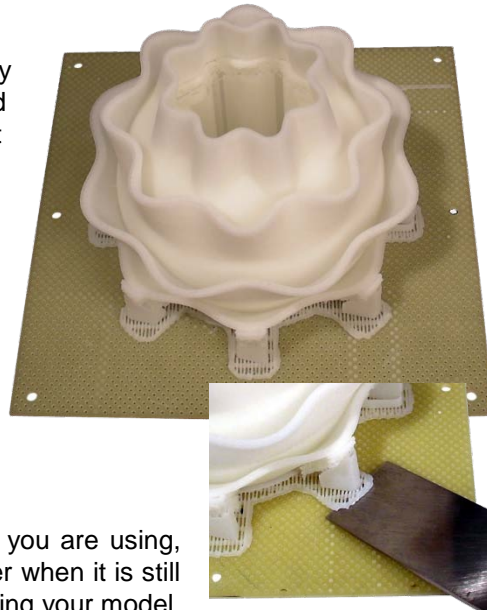
It is very strongly recommended that you do not attempt to remove the finished model from the platform while in the printer. If you do, you may bend the entire platform assembly so that it is no longer perpendicular to the printer head.

Remove the printer platform from the printer by removing the 2 screws at the bottom of the platform.



If you are using the FR-4 Board platform method, simply remove the clips holding the board to the platform and place the board with the model still attached on a flat surface.

Gently slide a spatula or chisel under the model and slowly wiggle it back and forth to lift the support material from the platform.

Remember to use gloves as the platform and model may still be hot and to prevent injury from any tool being used to help release the model from the FR-4 Board.



TIP: Depending on the platform preparation method you are using, the model may be easier to remove from the printer when it is still hot. If you want to heat the platform before removing your model, use the **Table Heat** option from the **3D Print** menu.

	<p>CAUTION: It is strongly recommended that you do not attempt to remove the model from the platform while the platform is still attached to the printer. Doing so may damage the printer or affect the platform level and nozzle height calibration.</p>
	<p>GLOVES: It is recommended that gloves be worn as the platform may still be hot and to prevent injury from any tool being used to help remove the model from the platform.</p>

Removing Support Material

Printed models are composed of two parts. One part is the model itself, and the other part is the support material used to support any overhanging parts of the model.

The support material is the same physical material as the model material, but printed at a much lower density. Support material is very easy to distinguish from the model material, making it easier to remove.



The left picture above shows the teapot with its support material still attached, while the right picture shows the teapot with support material removed.

The support material can be removed using a combination of tools. Some material can easily be removed by hand. Support material close to the model is easier to remove using tools such as wood carving chisels, long nose pliers, or wire cutters.



GLOVES/SAFETY GLASSES: The support material and the tools are sharp. Wear gloves and safety glasses when removing the part from the printer.

ALWAYS WEAR GLOVES AND SAFETY GLASSES WHEN REMOVING THE SUPPORT MATERIAL!

3D Printer Maintenance

Changing the Filament/Spool

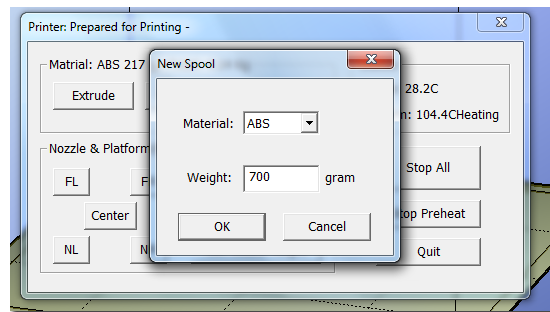
First withdraw the leftover material from the printer. Initialize the printer and choose **Maintenance** from the **3D Print** menu. Click the **Withdraw** button and the nozzle will start to heat. When the nozzle reaches the correct temperature, the printer will beep and you can gently withdraw the material.

Once the old filament has been removed, place a new spool of material on the spool holder, and pull it through the filament tube, until the material is about 10cm out of the tube, then insert it into the hole at the top of the extruder head.

Click the **Extrude** button. After the printer nozzle has warmed up to 260° C, the printer will beep. Gently push the filament into the hole at the top of the extruder head with a little downward pressure until the extruder mechanism starts to feed the filament through on its own.

After the new filament has been loaded, use the **New Spool** function to help the printer keep track of the amount of filament is now available.

TIP: If you are loading a different color filament than the last spool, run the **Extrude** function a few times once the new spool is in place but before printing your next model. This will help extrude out any remaining filament material of the previous color.



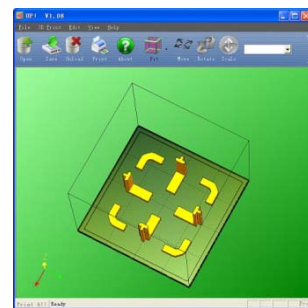
	CAUTION: If the nozzle is blocked, remove the nozzle and clean it.
	GLOVES: The extruder and platform are hot. Use gloves when working in this area of printer.

Vertical Calibration

The Vertical Calibration procedure allows you to ensure that the Printer Platform is perfectly horizontal and that the Printer prints consistently in the X, Y, and Z directions.

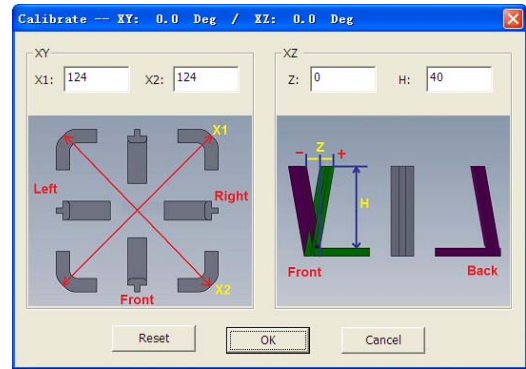
First, print the supplied Calibration Model on your Printer at the scale of the part when initially opened. The calibration file is in **C:\Program Files\Afinia\Example**.

After the Calibration Model is printed, remove the platform **without removing the parts**.



Open the **Calibrate** dialog from the **3D Print** menu. Measure the X1 and X2 length, as shown in the pictures below.

IMPORTANT NOTE: Before you enter any new calibration values, always click the **Reset** button, otherwise the new values get added to the old values. Before you enter any new values, the bar at the very top of the screen should read: XY: 0.00 deg / XZ: 0.00 deg.

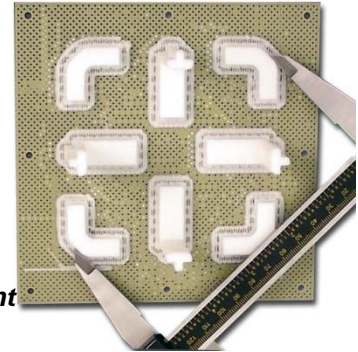


Measure the calibration print from front left to rear right corners of the printed parts on the platform to determine the **X1** measurement, and the rear left to front right to determine the **X2** measurement.

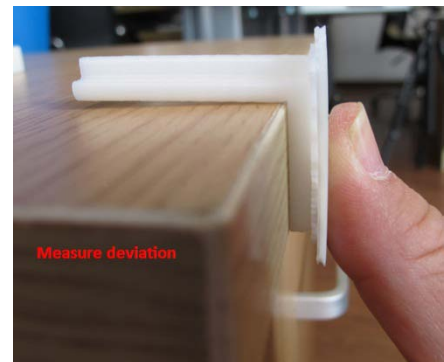
Be sure that you are not including the raft or support material when taking these measurements!

Enter the measured **X1** and **X2** values into the appropriate boxes.

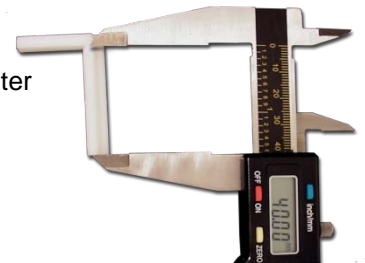
Checking the X1 Measurement



Next, carefully remove the Front Center 'L' shaped component from the platform and check the inside angle. If it is not 90°, measure the exact distance in millimeters that the end of the long arm of the part would need to move to get the angle to be 90° and enter that distance into the Z box. If the angle is less than 90°, the value to be put into the Z box will be a positive value. If the angle is more than 90°, the value to put into the Z box will be a negative value. For example, if the end of the long arm is 1.3 mm above the surface, enter **-1.3** in the **Z** box.



Finally, measure the long arm of the Front Center component from the inside of the angle to the end, which should be 40mm at full scale. Enter the exact measured value into the **H** box of the **Calibrate** dialog box.



Click **OK** to record all these values and exit the calibration window.

Cleaning the nozzle

After a lot of printing, the nozzle may be covered with a layer of oxidized filament. When the printer is printing, this oxidized filament may melt on the nozzle, and may create discolored spots on the model. To avoid this you need to regularly clean the nozzle.

Preheat the nozzle as the first step in order to melt the oxidized filament. Use the **Extrude** button on the **Maintenance** dialog box, and then click the **To Bottom** button. Wait until the material is finished extruding, then remove the extruded filament.

Use a heat-resistant material such as 100 percent cotton cloth or soft paper and a pair of pliers. With the material between the pliers and the nozzle, apply gentle pressure with the pliers and turn the pliers to remove the oxidized filament material. **Do not apply heavy pressure!**

Remember, the nozzle heats up to 260° C (500° F) – that's over two and a half times the boiling point of water. **Do not touch the nozzle or nozzle mount with bare skin during this process!**

TIP: Removing and soaking the nozzle in acetone will help remove excess material from the nozzle. Ultrasonic cleaning baths will also work.

Removing / Changing the Nozzle

If the nozzle becomes blocked, you may need to remove it in order to unblock or change it altogether.

To remove the nozzle, use the nozzle wrench provided in the toolkit that comes with your Afinia H-Series 3D Printer.

TIP: Heating the nozzle will generally make it easier to remove.



WARNING: Be careful when handling the heated nozzle and nozzle wrench once the nozzle has been removed!

Cleaning the Platform

Regardless of the method of preparing the platform that you have chosen, a smooth surface will improve your results.

- If you are using the FR-4 Board as the print surface, you should remove any remaining filament material from the surface of the board before printing again.
- If you are using blue masking tape on the platform, you will need to replace the tape once it becomes uneven. You may need to remove excess adhesive from the platform during the process of replacing the tape.

Lubrication of Bearings

The 3 axial bearings on the Afinia H-Series 3D Printer may occasionally require a bit of lubrication to keep it operating smoothly. The recommended grease to use is lithium grease.

When lubricating the bearings, first clean off as much old grease as possible from the bearings before applying new grease to the bearing. Slide the platform several times in the appropriate direction to spread the grease evenly.

If you have any questions about lubricating the bearings, please contact Technical Support (see page 34 for contact information).

Spare Parts

Most of the plastic parts on the printer can be printed by the Afinia H-Series 3D Printer itself. If you need spare parts for your printer, the files for the printable parts can be found in the **C:\Program Files (x86)\Afinia\Example\Spare Part** folder.

Tips & Tricks

Preheat the platform before printing

Large parts can sometimes have their corners lift from the platform, which causes the part to distort. This is caused by uneven heat across the surface of the platform. Preheating the platform before beginning large parts is essential to minimize this lifting.

Position the parts as close to the center of the platform as possible

The center of the platform is where the heating is most regulated, which helps to keep the support raft adhered to the platform. Try to avoid printing any object near the edges of the platform.

Decrease print time where possible

The faster you can print parts, the less lifting from the platform you are likely to get. Some ways to increase print quality include:

- If possible, try to avoid printing large parts in solid mode
- Set the layer resolution to as large a value as possible while still retaining the quality needed for the finished part
- Print the part in **Normal** or **Fast** mode
- If printing multiple parts at once, reduce the number of parts that are being printed

Regularly check the nozzle height calibration

The nozzle height can change for a number of reasons, such as changing the position of the printer, adding a new layer of surface preparation to the platform, or removing and replacing the FR-4 Board. To check or change the nozzle height, please see **Calibrating the Nozzle Height** on page 13.

Regularly check that the platform is level

To get the best results out of your Afinia H-Series 3D printer, the print platform must be perfectly lined up with the Nozzle. This means that when you set the nozzle height, the nozzle should be exactly the same distance from the platform at all four platform corners and in the center. If this is not the case, please follow the **Leveling the Print Platform** procedure detailed on page 13.

Status Indicator

The table below explains what each Status Indicator state means.

LED State	Indicates:
Solid Red	Printer is not initialized
Solid Green	Printer is Ready
Flashing 10 times per second	Data is transferring to printer
Flashing 5 times per second	1. Extruder is heating or 2. Extrude or Withdraw Material function in progress
Flashing about 2 times per second	Printing in progress
Flashing about every 2 seconds	Printing has stopped

Troubleshooting

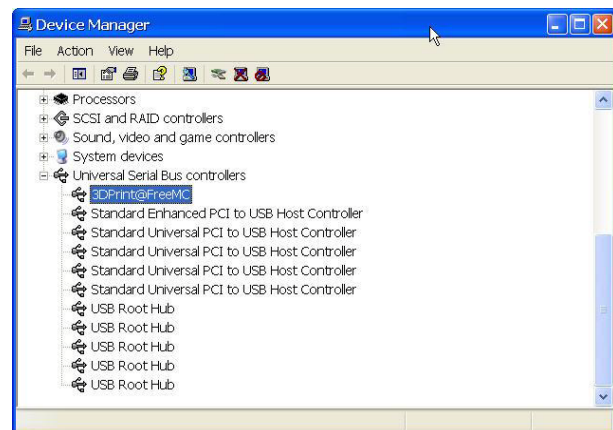
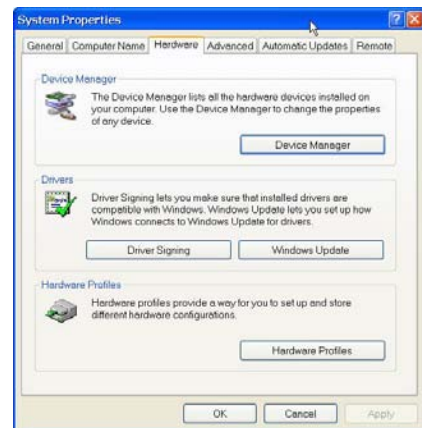
Problem or Error message	Solution
No power	Verify power cord is securely plugged in
Extruder or platform fails to reach operating temperature	Verify printer has initialized. If not, initialize the printer (see page 13)
	Heater is damaged. Contact Technical Support (page 34)
Material not extruding	Material is stuck in the extruder; remove the material (see page 27)
	The nozzle is clogged and needs to be cleaned out (see page 28)
Cannot communicate with printer	Make sure the USB cable is connected to the printer, and to the PC
	Unplug the USB cable, then plug in again
	Reset the printer—power off then power on
	Restart the PC
Others	Contact Technical Support (see page 34)

Solution for "Winusb.dll not found" problem (Windows)

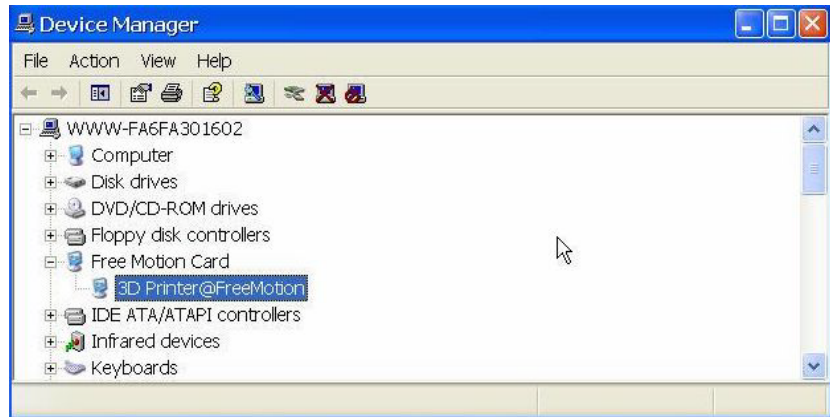
If you encounter a "Winusb.dll not found" error message, please follow the steps below:

Option 1: Uninstall Older Driver and Auto-Install New Driver

1. Open the Windows control panel, go to the **System Properties** dialog box and select the **Hardware** tab.
2. Click the **Device Manager** button, and the following dialog box will popup. Find the **3DPrinter@FreeMC** in the USB section.
3. Click the right mouse button and select the **Uninstall** option. The confirm dialog box will appear. Click **OK**.
4. Install the latest Afinia H-Series 3D Software.
5. Unplug the USB cable, then plug it back in. Windows will find a new device. Manually select the driver folder (the default location is **C:\Program files\Afinia\Afinia 3D Printer\Drivers**).



6. There should now be a new driver section in the device manager as shown to the right.

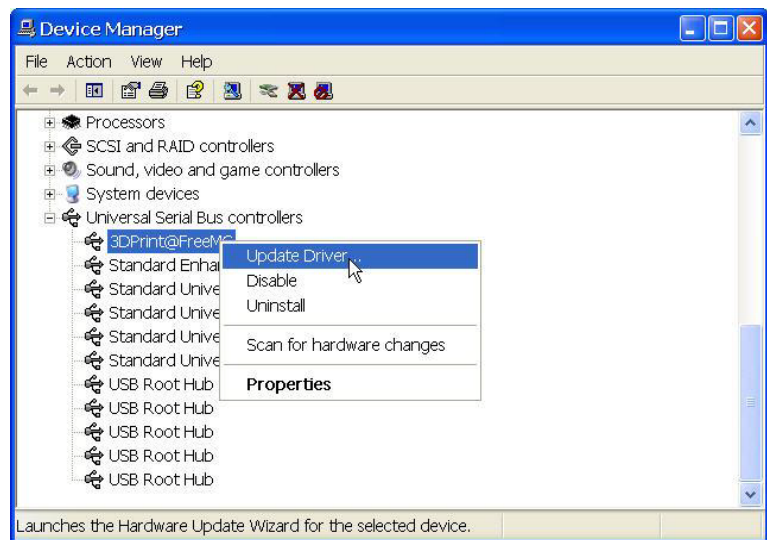


Option 2: Update the driver manually

1. Install the latest Afinia H-Series 3D Printer Software.

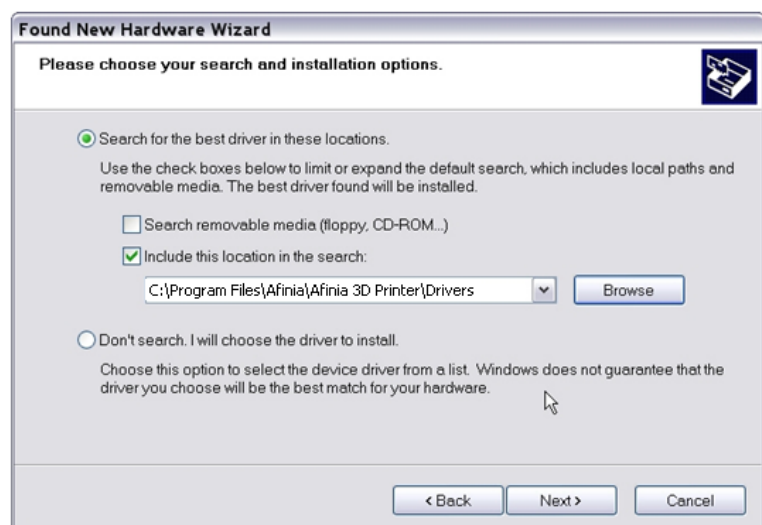
2. Find the **3DPrint@FreeMC** driver in the **Device Manager** dialog box (it should be located in the USB section).

3. Right click the entry and select **Update Driver**.



4. Select the Afinia H-Series 3D Driver folder (the default is **C:\Program Files\Afinia\Afinia 3D Printer\Drivers**).

5. A Free Motion Card entry should appear in the Device Manager list.



Specifications

Printer Physical Characteristics

Printing Material	ABS or PLA Plastic Filament
Material Color	White
Layer Thickness	0.20 – 0.40 or 0.25–0.35 mm, depending on model
Print Speed	10– 100 cm ³ /h
Print Size	140×140×135mm
Printer Weight	11 lb. (5 KG)
Printer Size	245 × 260 × 350 mm

Specifications

Power Requirements	100-240 VAC, 50-60 Hz, 200W
Model Support	Auto-generated Support
Input Format	STL, UP3
Workstation compatibility	Win XP/Vista/Win7/Mac OSX

Environmental specifications

Ambient temperature	60°F~85°F
Relative humidity	20%~50%

Technical Support

For technical questions or support issues, contact Afinia Technical Support:

PH: 952-279-2643

support@afinia.com

www.afinia.com

Please have the Model and Serial Number of your Afinia H-Series 3D Printer available when contacting Technical Support.

Date of Purchase:

Place Purchased:

Serial Number:

(Located on back of Printer)

Notes