

Conservationist®

LIGHT-DUTY, POWERED BURNER

**BTP-139/A
through
BTP-370/A**

These small-volume Conservationist® BTP models are equipped with powered gas, non-forced-draft burners requiring a negative draft. With 75- and 86-gallon storage capacities and inputs from 140,000 to as high as 370,000 BTUs, they are suitable for light- to medium-demand commercial applications.

POWERED GAS BURNER

- Electronic flame safeguard control with direct spark ignition
- Redundant gas valves for added safety
- Power gas burner requires 120V, 60Hz service
- Non-forced-draft burner; negative draft required in vent piping

FULLY AUTOMATIC CONTROLS WITH SAFETY SHUTOFF

- High temperature limit control (manual reset)
- Dual thermostats for accurate temperature control 120°F – 180°F

PERMAGLAS® ULTRA COAT™ GLASS LINING

- Exclusive process provides superior protection against corrosion
- CoreGard™ anode rods with stainless steel core provide additional corrosion protection

BAROMETRIC DRAFT DAMPER

- Ensures proper draft for maximum efficiency

HANDHOLE CLEANOUT

- Allows easy access to tank interior for cleaning

FACTORY-INSTALLED TEMPERATURE AND PRESSURE RELIEF VALVE

80% THERMAL EFFICIENCY

MAXIMUM HYDROSTATIC WORKING PRESSURE: 160 PSI

PROFESSIONAL START-UP SERVICE

- Assures most efficient combustion and safe initial installation

FLAME INSPECTION PORT OPENING

MOUNTED ON RUGGED CHANNEL IRON SKIDS

MUST BE INSTALLED ON NON-COMBUSTIBLE SURFACE

CODES AND STANDARDS

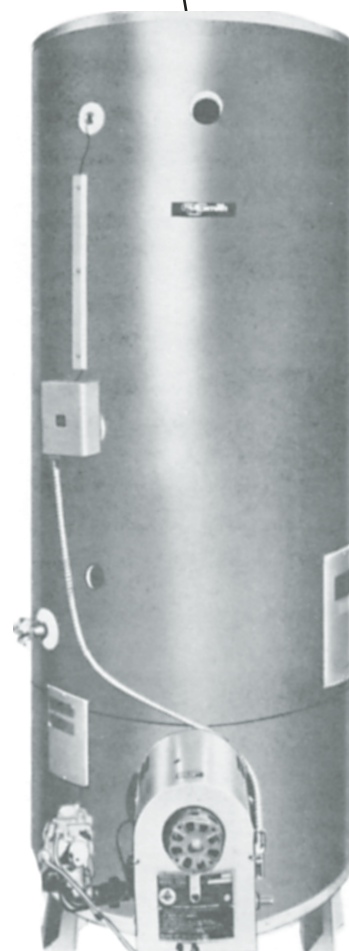
- Design-certified by UL (Underwriters Laboratories) International, according to ANSZ21.10.3-CSA4.3 standards governing storage-type water heaters
- Meets ASHRAE/IESNA 90.1-1999
- Meets CEC and New York Codes for thermal efficiency and standby loss

THREE-YEAR LIMITED TANK WARRANTY

- For complete information, consult written warranty or contact A. O. Smith

OPTIONS

- ASME tank construction
- National Board Registration on ASME models
- Illinois School Code on BTP-199, BTP-370
- Low-water cutoff
- 5-year or 10-year extended limited warranty



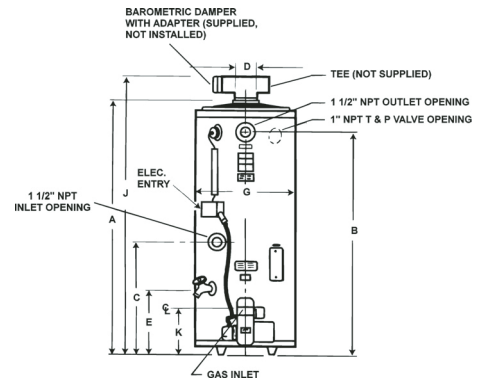
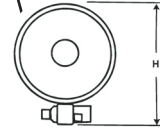
A.O. Smith
Water Heaters

Conservationist®

LIGHT-DUTY, POWERED BURNER

CAPACITY, INPUT AND OUTPUT

MODEL NUMBER	BTU INPUT PER HOUR	Gallons or Litres	TANK SIZE	FIRST HOUR RATING 100°F RISE	GPH or LPH	RECOVERY – GALLONS PER HOUR AT °F TEMPERATURE RISE			MAXIMUM AMPERES 120 V, 60 Hz, 1
						40°F	100°F	140°F	
						22°C	56°C	78°C	
BTP-139/A	140,000	U.S. Gallons	81	0	GPH	0	136	97	5
		Litres	306.6	0.0	LPH	0.0	514.8	367.1	
BTP-199/A	199,000	U.S. Gallons	81	0	GPH	0	193	138	5
		Litres	306.6	0.0	LPH	0.0	730.4	521.7	
BTP-270/A	270,000	U.S. Gallons	81	0	GPH	0	262	187	5
		Litres	306.6	0.0	LPH	0.0	991	707.8	
BTP-370/A	370,000	U.S. Gallons	81	0	GPH	0	359	256	5
		Litres	306.6	0.0	LPH	0.0	1358	970	



DIMENSIONS AND SHIPPING WEIGHTS

MODEL NUMBER	Inches or CM	DIMENSIONS									SHIPPING WEIGHT			
		A	B	C	D	E	G	H	J	GAS	STANDARD	ASME	IN	OUT
BTP-139/A	Inches	74.75	65	26-3/4	6	21-3/8	27-3/4	38	85-1/4	1/2	556 Lbs.	658 Lbs.	1-1/2	1-1/2
	CM	189.9	165.1	67.9	15.2	54.3	70.5	96.5	216.5	1.3	252.7 Kg	299.1 Kg	3.8	3.8
BTP-199/A	Inches	74-3/4	65	26-3/4	6	21-3/8	27-3/4	38	85-1/4	1/2	545 Lbs.	635 Lbs.	1-1/2	1-1/2
	CM	189.9	165.1	67.9	15.2	54.3	70.5	96.5	216.5	1.3	247.7 Kg	288.6 Kg	3.8	3.8
BTP-270/A	Inches	74-3/4	65	26-3/4	6	21-3/8	27-3/4	38	85-1/4	3/4	547 Lbs.	632 Lbs.	1-1/2	1-1/2
	CM	189.9	165.1	67.9	15.2	54.3	70.5	96.5	216.5	1.9	248.6 Kg	287.3 Kg	3.8	3.8
BTP-370/A	Inches	74-3/4	65	26-3/4	6	21-3/8	27-3/4	38	85-1/4	3/4	547 Lbs.	632 Lbs.	1-1/2	1-1/2
	CM	189.9	165.1	67.9	15.2	54.3	70.5	96.5	216.5	1.9	248.6 Kg	287.3 Kg	3.8	3.8

*Natural & Propane (LP)

SUGGESTED SPECIFICATION

(Natural or Propane) gas water heater(s) shall be A. O. Smith Conservationist® Model BTP _____ with a storage capacity of _____ gallons, an input rating of _____ BTUs per hour, a recovery capacity of _____ GPH at 100°F temperature rise and a maximum hydrostatic working pressure of 160 PSI. Heater(s) shall meet ASHRAE/IESNA 90.1-1999 for thermal efficiency and standby loss. Water heater(s) shall have glass-lined tank, protected against electrolytic corrosion by multiple factory-installed anode rods. Other standard equipment shall include: 1) Powered gas burner with redundant main gas valves, electronic ignition, automatic pilot gas valves, gas pressure regulator, and flame inspection port: 2) Handhole cleanout: 3) High temperature limit control: 4) Dual thermostat for accurate temperature control; 5) Factory-installed T&P valve.

Controls shall include a Fenwal OSI to provide direct spark ignition and flame monitoring. A prepurge of 30 seconds minimum shall be provided. A trial for ignition period of 5 seconds, after which if the flame is not proved or lost during the running cycle, the system will lock out.

Heater(s) tank shall have a 3-year (or extended 5- or 10-year limited) warranty against corrosion as outlined in the warranty.

A.O. Smith

Water Heaters

www.hotwater.com

500 Tennessee Waltz Parkway, Ashland City, TN 37015

For Technical Information and Automated Fax Service, call 800-527-1953.

A. O. Smith reserves the right to make product changes or improvements without prior notice.