

### STEP3

#### SETUP LOCAL VIEWING ON YOUR COMPUTER

## STEP3 SETUP LOCAL VIEWING ON YOUR COMPUTER

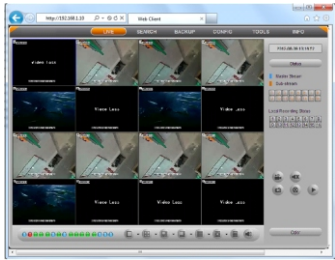
### 1. Retrieve the network parameters.

1a. Go to Main menu->System->Network to get the IP address, TCP port and HTTP port.

**Note:** The IP address of the DVR should be in the same field as your computer. And a static (fixed) IP address is recommended. E.g. if your router is set for the 192.168.1.x network, and your computer is 192.168.1.8, then the IP address of your DVR can be 192.168.1.10. Default IP address is 192.168.1.10, TCP port: 5000, HTTP port: 80.

### 2. Accessing your DVR locally (ON YOUR LOCAL COMPUTER).

Open Internet Explorer and enter <http://192.168.1.10:80> in the address bar to access it.



**Note:** You may want to use a different port than the default HTTP port 80. If so, you need to configure your DVR to use the port you want. When configured, remember that you have to specify its port number in the URL (e.g. if you select port 88, you access it using 192.168.1.10:88).

## STEP4 INTERNET REMOTE MONITORING

### 1. Port forward.

1a. Accessing your router by entering the gateway address, e.g. <http://192.168.1.1>

1b. Find the option called port mapping or port forwarding.

1c. Specify the HTTP port (default is 80) and TCP port (default is 5000) to be forwarded from the internal/local IP address of your DVR (e.g. 192.168.1.10) to the Internet.

**EXAMPLE** Port Range

Application	Start	End	Protocol	IP Address	Enable
HTTP	80	to 80	Both	192.168.1.10	<input checked="" type="checkbox"/>

### STEP4

#### INTERNET REMOTE MONITORING

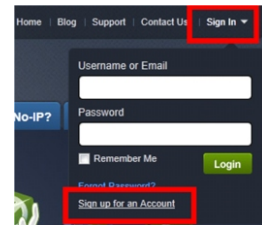
**Note:** Port forwarding guides for various routers on [www.portforward.com](http://www.portforward.com)

### 2. DDNS (Dynamic Domain Name System) register on the third party website. (no-ip for example).

Open the web browser (Internet Explorer by default) and enter <http://www.no-ip.com> in the address bar.

2a. Create an account.

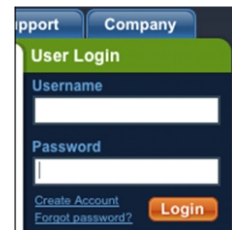
Fill in the required fields on the new account form. Once you've filled in the required information and agreed to our Terms of Service, click the "Sign Up Now!" button at the bottom of the page.



2b. Confirm your account

Once you have submitted your account information into the new user form, it will send a confirmation email to the address you provided. You will need to check that account and look for the email from No-IP.com. The email contains a link you must click in order to confirm your account.

2c. Login to your account



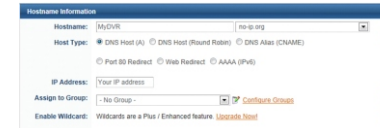
2d. Add a host or domain to your account



### STEP4

#### INTERNET REMOTE MONITORING

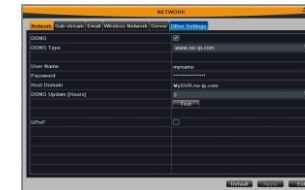
In order to add a host to your account, select the "Add" link from the "Hosts/Redirects" menu. This will bring up the Add a Host page. And now you're ready to fill in the details of your new hostname.



**Note:** For more detailed guide of No-ip service, please visit <http://support.no-ip.com/>

### 3. Enable DDNS on the DVR.

Go to Main menu->Setup->Network->Other Settings to type in the host info.e.g.

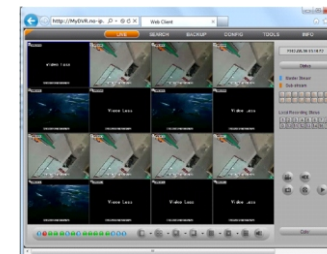


Under DDNS: tick off;  
Under DDNS type: choose [www.no-ip.com](http://www.no-ip.com);  
Under User Name: the account you created at no-ip.com;  
Under Password: the password of your account at no-ip.com.  
Under Host Domain: enter the host name you created at no-ip.com;  
DDNS Update: Choose the DDNS update period.

**Note:** Please allow 10~15 minutes for the DDNS service to update with your new DDNS address. This is normal for the DDNS system.

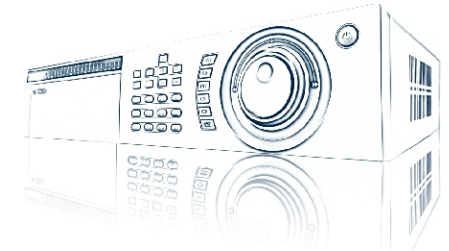
### 4. Accessing your DVR remotely.

Open Internet Explorer and enter the host name (e.g. [Http://MyDVR.no-ip.org](http://MyDVR.no-ip.org)) in the address bar to access it.



For other detailed operation like mobile phone remote view, please refer to the user manual.

## Quick Guide Manual Of DVR ▶▶



## STEP1

### BASIC SETUP AND INSTALLATION

## STEP1 BASIC SETUP AND INSTALLATION

### 1. Connecting BNC cameras (not included) to BNC ports (VIDEOINPUT) on the rear panel.

**Note:** Test the cameras prior to selecting a permanent location by temporarily connecting the cameras and cables to your DVR.



(For reference only)

### 2. Connecting the USB mouse.

Connect a USB mouse to one of the USB ports on the front panel or rear panel of the DVR.



(For reference only)

### 3. Connecting a monitor (not included).

3a. Connect a BNC cable (not included) from your TV or monitor to the video output port on the rear panel of the DVR.



(For reference only)

3b. Connect a VGA cable (not included) from your monitor to the VGA port on the rear panel of the DVR.



(For reference only)

3c. Connect a HDMI cable (not included) from your monitor to the HDMI port on the rear panel of the DVR.

## STEP2

### NAVIGATION AND CONTROLS



(For reference only)

**Note:** HDMI port is optional for some model.

### 4. Connecting the Ethernet cable. (not included).

Connect one end of the Ethernet cable to an available LAN port of your router (not included) and the other end to the other end to the other port (LAN) on the rear panel of the DVR.



(For reference only)

### 5. Powering on the DVR.

Connect the power cable to the DC 12V port on the rear panel and the power cord into an electrical outlet, and then turn on the switch. At start up, the system runs an initial logo, after a few moment, it will load a live display view.



(For reference only)

## STEP 2 NAVIGATION AND CONTROLS

### 1. Using the main menu.

Right click anywhere on the screen and choose, **Main Menu** or press the **Menu** button on the front panel of the DVR. Click the icons below to open sub-menus.

## STEP2

### NAVIGATION AND CONTROLS



### 2. Using a mouse.

2a. In live: Double-click left button on one camera to be full screen display. Double-click again to return to the previous screen display. Click right button to show the control menu. Here are all control and setup. Click right mouse again to hide the control menu.



2b. In setup: Click left button to enter. Click right button to cancel setup, or return to the previous. If want to input the value, move cursor to the blank and click. An input window will appear as Fig2. 1. It supports digits, letters and symbols input.



Fig 2. 1 Virtual Keyboard It supports mouse drag. I.e. Set motion detection area: click customized, hold left button and drag to set motion detection area.

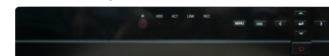
2c. In playback: Click left button to choose the options. Click right button to return to live mode.

2d. In backup: Click left button to choose the options. Click right button to return to previous picture.

2e. In PTZ control: Click left button to choose the buttons to control the PTZ. Click right button to return to live.

### 3. Other control options

3a. Front panel.

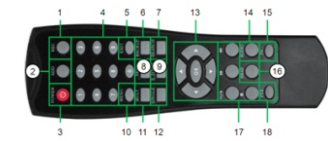


(For reference only)

## STEP2

### NAVIGATION AND CONTROLS

### 3b. Remote control



Serial Number	Name	Function
1	REC Button	To start the manual recording.
2	ADD Button	Input the number of DVR to control it.
3	POWER Button	To turn on/off the device.
4	Digital Button	Code input/number input/channel switch.
5	EXIT Button	Return to the previous interface.
6	BACKUP Button	To enter the backup mode.
7	SEARCH Button	To enter the video playback interface.
8	SEQ Button	To enter the auto dwell mode.
9	E-ZOOM Button	To electronic amplify the single channel.
10	MENU Button	To enter the sub menu.
11	Multi Screen Button	To choose multi-screen display mode.
12	Single Screen Button	To choose single-screen display mode.
13	Direction and Enter Button	Direction Button: move cursor to select items. Enter Button: confirm the selection.
14	AUDIO Button	To enter the audio adjustment interface.
15	Fn Button	Reserved function keys.
16	SNAP Button	To snap the live pictures.
17	Playback Control Button	To control playback, pause/play, single-frame play, rewind, stop, fast forward.
18	PTZ Button	To enter the PTZ control interface.

### 4. Setting the basic parameters.

4a. There is a setup wizard when power on the DVR, you can setup the basic parameters like time, date, IP address, record resolution, manage the HDD and etc.



4b. Or you can enter into Main menu>Setup to setup the time, record and network parameters.

**Note:** By default, ID is admin, no password. With password enabled, you need to enter your ID and password to access the system.