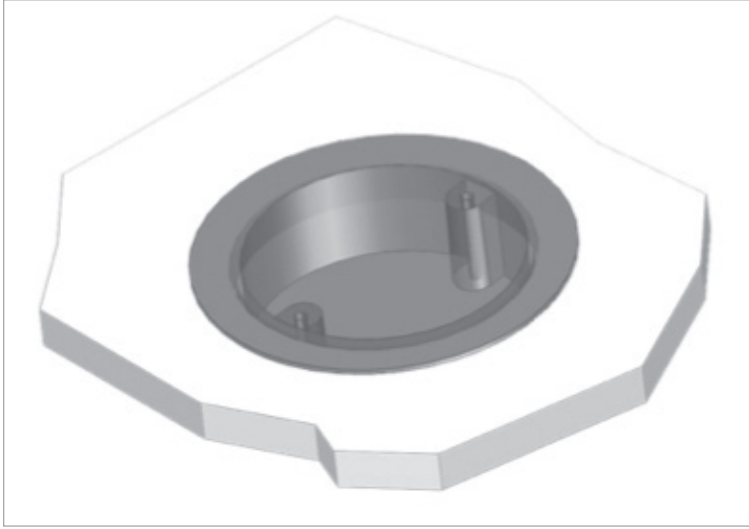


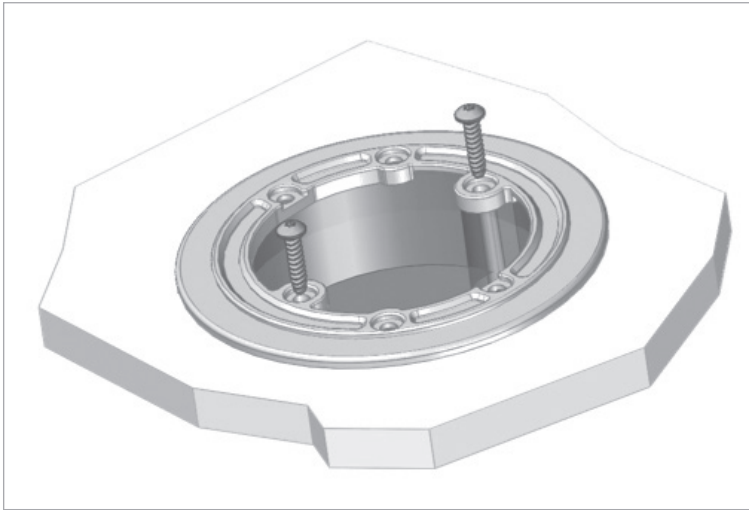
User Manual Solistar: J-Box Mounted Fan Cooled LED Light

Installing the LifeLight 47 is simple and cost effective. Just follow these step by step instructions for proper installation:

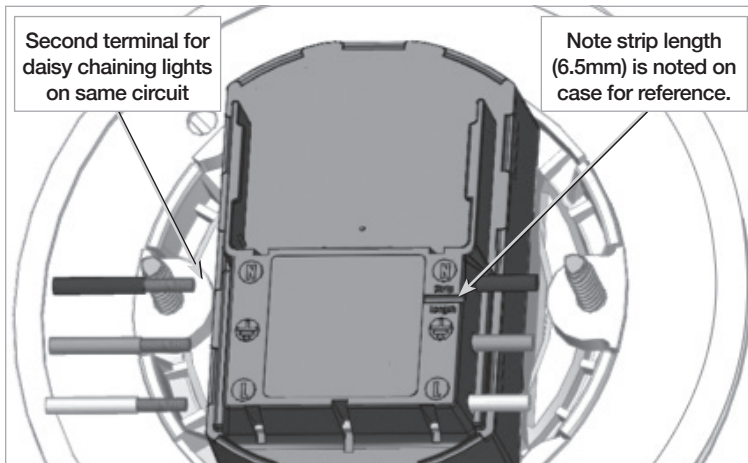
1: Install any standard round J-Box into the ceiling or wall.



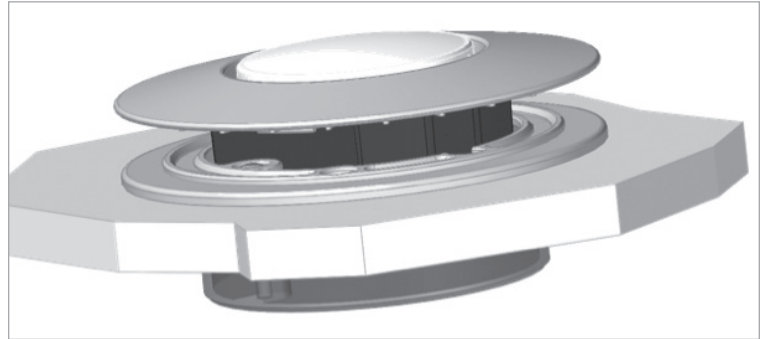
2: Install Mounting Bracket on to J-Box with the screws that are supplied.



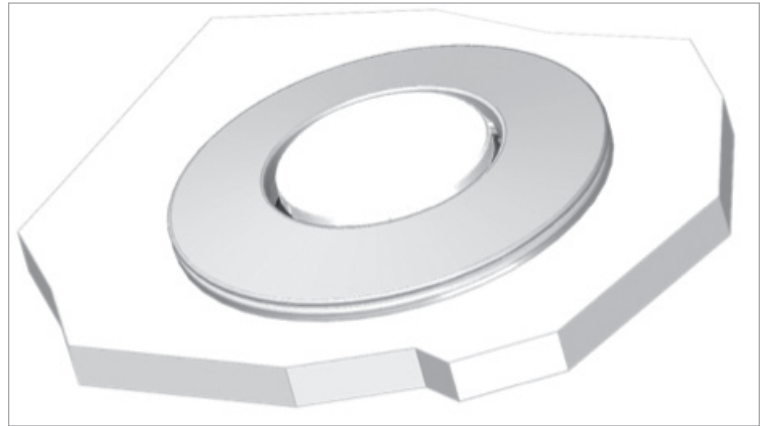
3: Connect Romex cable or wire into indicted line, neutral and ground positions.



4: Set upper Light assembly onto the Mounting Bracket by aligning the “clips” on the Light to the “slides” on the Mounting Bracket, press in firmly and then twist the Light clockwise about ½ inch until it “clicks” into place.



5: Finished ... Turn on the light and enjoy!



 solistar.com

User Manual Solistar: J-Box Mounted Fan Cooled LED Light

solistar.com



Patent Pending
Model: 100-010



100-010 Features

- Light features a new patent pending fan and cooling system that keeps the LED temperature significantly cooler than other LED lights available on the market. The cooling system allows the light to be small to fit in small installations and run significantly longer and brighter than competitors.
- Eliminates the need for Can-Light fixtures and installations.
- Mounts to standard industry ceiling electrical J-Box's.
- Light accepts standard Romex 14 gauge and 12 gauge wire directly.
- Light connections are made simply by stripping the wire and inserting directly into light, no screws required.
- The wiring connections allow for lights to be daisy chained in a row for optimal ease and wire installation. Each terminal can handle 20 amps for 12 gauge wire and 16 amps for a 14 gauge wire.

Electrical Specifications

- Operating Voltage: 120 Volts AC
- Power: 16 Watts
- Current: .1333A
- Lumens: 760lms
- Color Temperature: 3450K
- Power Factor: > 0.97
- THD: < 15%
- CRI : > 80
- Over Temperature Protection: 85 C° with rest at 54 C°
- Dimming: Works with AC-Triac/Phase Cut Dimmers
- Fan Rotor Lock Protected
- Fan Runtime: 70,000 hours
- Wire Size: Accepts 18-12 gauge stranded or solid copper wire
- Wire Terminals Current Rating: 12AWG 20A, 14AWG 15A, 18AWG 10A, 20AWG 7A

Conforms to UL Standard 1598. Certified to CSA Standard C22.2 No. 250.0

WARNINGS

- Risk of electrical shock. Disconnect power at fuse or circuit breaker before installing or servicing.
- To prevent early lamp failure.. Lamp should only be installed in operating environments ranging between -20°C and +40°C (-4°F and +104°F)
- To prevent overheating do not install in totally enclosed recessed fixtures
- No user serviceable parts inside. To avoid electrical shock do not disassemble product.
- This product is not intended for use in emergency light fixtures or exit signs. Not for use where directly to weather or water.
- Risk of electrical shock. Install this light only in J-box's and luminaires that have construction features and dimensions shown in the photographs and/or drawings.
- Do not make or alter any open holes in an enclosure of wiring or electrical components during light installation.
- To prevent wiring damage or abrasion, do not expose wiring to edges of sheet metal or other sharp objects.

