



# American Dynamics

*From Tyco Security Products*

---

## Release Notes

---

### VideoEdge® NVR Software

Applicable Software	Product Data
VideoEdge NVR Software V4.5.0 (4.5.0.698)	Visit the Network Video Recorders section of our web site – <a href="http://www.americandynamics.net">www.americandynamics.net</a> – to download datasheets and other documentation in PDF format.

June, 2014

---

#### Note

In case of discrepancy, the information in this document supersedes the information in any document referenced herein.

---

8200-1056-03 A0

# Table of Contents

- Table of Contents ..... 2
- What's in This Release ..... 4
  - VideoEdge NVR 4.5.0 Software – What's New ..... 4
  - New OEM Installer ..... 4
  - New Simplified Install Wizard ..... 4
  - New Admin Look & Feel ..... 4
  - Auto Camera Discovery ..... 4
  - Security Hardening ..... 4
  - New Analytics ..... 6
  - Device Replacement ..... 6
  - Push Updates ..... 6
  - ONVIF Camera Handler ..... 7
  - VideoEdge Client Enhancements (available only on the VideoEdge Appliances) ..... 7
  - VideoEdge Client Performance ..... 7
  - VideoEdge NVR Patch Enhancements (From version 4.4 patch 2) ..... 7
- Known Limitations and Issues ..... 9
  - VideoEdge NVR ..... 9
- Cameras Supported ..... 12
  - American Dynamics ..... 12
  - ACTi Corporation ..... 19
  - Arecont Vision ..... 19
  - AXIS Communications ..... 24
  - Bosch ..... 32
  - CBC ..... 33
  - Dahua ..... 33
  - FLIR ..... 35
  - Panasonic Corp ..... 37
  - Pelco ..... 38
  - Samsung ..... 41
  - SONY ..... 44
  - Vivotek Corp ..... 46
- Appendix A ..... 48
  - Dry contact Alarm Recording ..... 48
    - Camera Recording ..... 48
    - Camera Start Recording ..... 49

Camera Stop Recording .....	49
Camera Start Recording .....	49
Camera Stop Recording .....	49
Contact Information .....	50

## What's in This Release

The following features and enhancements are part of this release.

### VideoEdge NVR 4.5.0 Software – What's New

This VideoEdge Network Video Recorder (NVR) V4.5 is an upgraded version of the V4.4 released in October 2013. Earlier NVR versions must be upgraded in sequence. i.e. NVR V4.2.1 or NVR V4.2 to NVR 4.3 and then to NVR 4.4. The upgrade to 4.5 can be done from any NVR 4.4.0.xxx release. .

**Note: NVR 4.1 systems must be upgraded to NVR v4.2.1 prior to upgrade to NVR 4.3 and then to NVR 4.4 release.**

**Note: In order to avoid serious data loss or corruption, it is imperative that a UPS is deployed on systems utilizing RAID cards without a battery backup. The UPS should provide a minimum of 2 minutes of power to allow a managed shutdown.**

This Video Edge NVR V 4.5 release has the following new features and enhancements.

### New OEM Installer

- A new OEM installer (NVR\_OEM\_Installer-4.5.0.698.x86\_64.raw) is now available. The installer replaces the existing Live Installer and requires no use of YaST (i.e. less manual steps) to install the NVR.

**Note: this file needs to be placed on a USB thumb drive using an appropriate third party program.**

### New Simplified Install Wizard

- Along with the new OEM installer, the actual setup wizard has been streamlined to allow the user to configure the system in fewer steps.

### New Admin Look & Feel

- The WEB admin has been updated with new color scheme and new icons.

**Note: WEB Admin only supported with Microsoft Internet Explorer versions 9 & 10.**

### Auto Camera Discovery

- A new auto discovery feature is now supported which allows cameras to be discovered on the network faster and with less steps. This feature uses standard network discovery protocols that simplify the setup of cameras on the NVR. All AD cameras and Axis cameras can use this feature. Other camera manufactures may not support these standard discovery protocols. For those cameras, the existing NVR 4.4 discovery functionality (Scan Devices) has been included within the NVR.

### Security Hardening

- Address a number OS vulnerabilities to become FISMA – ready
- Enhance user login/logout facility
- Enhance Auditing and Logging for user account lockout
- Enhance user control experience for remote Access for XRDP and VNC
- Remove root user account for SSH login
- Enhance user experience for Security Configuration
- Provide Web access communication options to easily select: HTTP and HTTPS or HTTPS only

- Create self-sign certificates
- Create Certificate Signing Request
- Install Signed Certificate
- Supports HTTPS connection with various brand of cameras
  - User can configure 3 Security Group in the Security page under Devices- Low (HTTP/Basic) or Default, Medium (HTTP/Digest) and High (HTTPS/SSLv3). Once these Security Group configured, the user have the option to choose the level of security (if supported) they preferred when adding their camera to the NVR or Hybrid and it should be noted that user will needs to enabled the HTTPS feature on their camera before adding to NVR or Hybrid.

Table below shows the Security Group which each handler supports:

Handlers	Low (HTTP/Basic) or Default	Medium (HTTP/Digest)	High (HTTPS/SSLv3)
AD 8 Channel Encoder	Yes	No	No
AD VideoEdge IP Cameras	Yes	No	No
AD Illustra iAPI1	Yes	No	Yes
AD IP SpeedDomes	N/A	N/A	N/A
AD Illustra iAPI2	Yes	No	Yes
AD Illustra iAPI3	Yes	Yes	Yes
AD Illustra Flex	Yes	No	No
ACTi Corporation Cameras	Yes	No	No
Axis Cameras	Yes	No	Yes
Arecont Vision Cameras	Yes	No	No
Arecont Vision- CBC	Yes	No	No
Bosch Camera	Yes	No	No
Dahua Cameras	Yes	No	No
Flir	Yes	No	No
Panasonic Cameras	Yes	No	No
Pelco Cameras	Yes	No	No
Samsung Cameras	Yes	No	No
Sony Cameras	Yes	No	Yes
Vivotek Cameras	Yes	No	Yes

- Enhance NVR encryption ciphers

## New Analytics

- Dwell** – Person must be mostly stationary within the ROI for the predetermined amount of time and % overlap. Example: Retail customer interacting with a specific product in a display or endcap. ROI is usually smaller and more defined.
- Linger** – Person must remain within the ROI for the predetermined amount of time and % overlap, but unlike Dwell, the person can move around within the ROI. Example: Teenagers loitering outside of a gas station or hanging out in a particular area. ROI is usually larger, giving more room to move about.
- Heat maps** – A graphical representation where various levels of motion or activity are displayed as different colors overlaying a still video image. Dark Blue indicates no motion. Dark Red indicates high motion. Gradient colors in between to depict generalized motion.

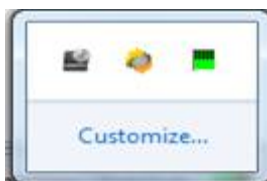
## Device Replacement

- Through victor, the capability has been added to replace cameras easily. NVR server now has the capable of changing the IP address on existing camera rather than forcing the camera to be removed and re-added.

## Push Updates

With NVR 4.4, the ability was added through victor/ VE Client to perform push upgrades of NVR software via the victor Client. This functionality has been enhanced in NVR version 4.5 to include individual camera handler push updates going forward.

- To Update Individual Camera Handlers the Handler.exe package must be downloaded and placed in a folder named “Repository” inside the Tyco\Update Server repository directory on the Site Manager’s workstation. It may be necessary to create the Repository folder if it does not already exist.
- The camera handler executables will require to be extracted (double click to execute) prior to making them available for installation.
- The installation process can be initialized either by running the “Tyco Update Utility tool” located in the System tray (Image 1) and selecting “Tools\ Repository packages (image 2 and 3) or alternatively the user can choose to right click on the NVR Icon in the “victor Client Device list” and select “Check for Updates” (image 4)



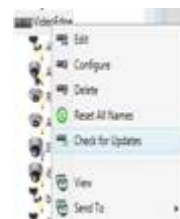
(Image 1)



(Image 2)



(Image 3)



(Image 4)

- The Tyco update Utility will provide a choice of pick and choose which handler to install while the check for updates option will install all available handlers located in the Repository folder.
- The update process will stop and restart services as each individual handler is installed.
- Update process can be monitored through the Victor Client “Activity Window” or from the “System\Update Software” page of the NVR. The information under “Upload packages” will change as each package completes, retaining the last package uploaded information. As each Handler is installed successfully the Device handler version number for the device selected to update will change to reflect the update.

## ONVIF Camera Handler

An ONVIF (version 2.2) Profile S compliant camera handler is included in the VideoEdge NVR software so that any ONVIF compliant camera can be added to the system.

## VideoEdge Client Enhancements (available only on the VideoEdge Appliances)

The following enhancements have been added to the VideoEdge (local) Client:

- Right-click in video pane to revert a single pane to LIVE
- Automatically open of control bar if user selects video for playback
- Double-click in video pane displays camera in 1x1
- Switching between layouts retains previous cameras
- Ability to retrieve snapshot in live mode
- Clear all events link

## VideoEdge Client Performance

The VideoEdge Client does have an impact on the available Hybrid system resources. The following guidelines should be observed when operating the VideoEdge client on the Hybrid hardware:

Platform	Aggregate Mbps w/o VideoEdge Client	Aggregate Mbps w/ VideoEdge Client	Max Cameras
Desktop	100	50	32-IP

## VideoEdge NVR Patch Enhancements (From version 4.4 patch 2)

The NVR Patch enhancements are included with the NVR 4.5 release

- New SUSE Kernel update to SUSE Version 11 SP3.
- Support for the next release of the VideoEdge Appliances (i.e. new CPU motherboards).
- Analog inputs on the VideoEdge Hybrid Appliances are now included when a template is created.
- USB clip export finish message now works properly on VideoEdge Client.
- Dry contact update to allow the duration of the dry contact to be recorded, not just the event. (See Appendix A for details).
- Enhanced alert capability to generate alerts under certain conditions:
  - **Audio Recording Failure** – If audio is enabled and if the system detects that an audio stream is not being recorded, an ‘Audio Recording Failure alert begun’ message will be

generated and when audio recording is restored, another message stating 'Audio Recording Failure alert end' will be generated.

- **Camera Video Loss** – The system will continually monitor the health of all video streams. A 'Video Loss alert begun' message will be generated upon loss of any video stream and when the video is restored another message stating 'Video Loss alert end' will be generated.
- **Video Stream Loss** – The system will continually monitor the health of all video streams. A 'Video Stream Loss alert begun' message will be generated upon loss of any video stream and when the video stream is restored another message stating 'Video Stream Loss alert end' will be generated.
- **Video Recording Failure** – If the system detects that a video stream is not being recorded, a 'Video Recording Failure alert begun' message will be generated and when video recording is restored, another message stating 'Video Recording Failure alert end' will be generated.
- **Reboot VideoEdge NVR** – If a VideoEdge NVR unit reboots or overheats this will be detected and will be conveyed to the user in the form of an event. This event will be visible in both VE Client and in victor.
- **Storage Status Degraded** – Any problems pertaining to a RAID array (if used) or any storage connected to the VE NVR will be detected and a Storage Degraded event will be generated. This event will be visible in both VE Client and in victor.
- **Storage Status Missing** – As part of the enhanced system monitoring a missing or un-mounted drive will be detected. This presents a significant risk to recording and may be accompanied by a Media Recording Failure event. This event will be visible in both VE Client and in victor.
- **Video Dark Frame** – The system will monitor for any Dark Frame occurrences which represent a possible loss of video. This event will be visible in both VE Client and in victor.
- **Video Pipeline Failure** – The system's Video Pipeline is constantly monitored for any behavior that could have a negative impact on recording.



## Known Limitations and Issues

The table below highlights known new limitations or issues against the V4.5 release only. Known limitations and issues may exist from previous releases. Please refer to the specific release for the appropriate information.

### VideoEdge NVR

VideoEdge NVR	
Description	Suggested Work-Around
VE NVR: When the server only has a single physical hard drive for the operating system and VideoEdge application (additional media drives are not available), the NVR will not be able to execute the clip export function.	A <b>clipexport</b> directory must be created on the same drive as the OS because the NVR software requires a 100GB drive with a mount point of <b>/var/opt/americandynamics/venvr/clipexport</b> . Refer to the User Manual for further details.
VE NVR: Systems with RAID Controllers must have the Fstab Option NOBARRIER set in order to work efficiently. Note: if the RAID Controller does not have battery-back then a power loss could cause serious data loss or corruption.	To avoid consequences as a result of a power loss, It is imperative that a UPS is deployed on such systems. The UPS should provide a minimum of 2 minutes of power to allow a managed shutdown
VE NVR: The VideoEdge NVR does not support booting in UEFI mode.	During the installation process ensure that booting is set to BIOS mode.
VE NVR: If the server BIOS time and the OS times are not the same, then the system may malfunction at reboot.	When setting up the VideoEdge NVR, it is important to go into the server BIOS to correctly setup the date/time, and then do the same thing for the OS system clock. Note: If the NVR is to use one or more NTP servers to synchronize time then BIOS clock and the OS system clock should be set to UTC time with OS UTC clock selection checked.
VE NVR: Setting time back on the server may cause the system to not function properly	Whenever, the date/time is changed on the server. The NVR Services should be restarted from Advanced→Shutdown WEB page.
VENVR: PTZ 'Return to Home' Dwell Timer is broken on IPSpeedDome.	User must disable 'Return to Home' via the IPSpeedDome's web page in order to use the "Return to Home" feature within the NVR
'VENVR: User cannot edit the name of an alert after it has been created.	Delete the alert and then recreate it.
VENVR: Not closing down windows Remote Desktop Client properly will leave a high CPU process running on the NVR which affects performance.	Log out properly from your Remote Desktop session and do NOT click the "X" on the dialog box.
Default iSCSI timeouts are large, causing switching to another media folder to take upwards of 145 seconds.	Modify the following settings in /etc/iscsi/iscsi.conf: node.session.timeo.replacement_timeout node.conn[0].timeo.noop_out_interval node.conn[0].timeo.noop_out_timeout
Changing the Overlap Slider has no affect when a selecting a full Region of Interest either in VideoEdge NVR or victor Client.	No known workaround.

VideoEdge NVR	
Description	Suggested Work-Around
VENVR: Dry Contacts: Dry contact alerts are being reported in the Journal in the order that they are enabled instead of the physical number of the alarm port	Care must be taken when triggering dry contacts. The dry contact number in the journal corresponds to when in the Admin GUI it was set.
VENVR: Linux GUI can become unusable / not load if machine is viewed through KVM	If out of range message, press <Ctrl-Alt-F2>. Brings to a command line prompt #. Edit config file: /etc/X11/xorg.conf. Under "Monitor" section, lower upper range VertRefresh parameter to a lower value (if it's 85, drop it down to 75 or 60). Save File Reboot.
When using the American Dynamics 8-Channel Encoder (EIP8H), the VE NVR will lose video when you set the H264 stream to 1 FPS.	Set the FPS to 2 or higher for H264 streams on the American Dynamics 8-Channel Encoder.
Panasonic WC CS385 - G726 doesn't play audio	No known workaround. G726 audio codec not supported
NVR 4.4 Bitrate changes i600 Minidome - when lowering quality of CVBR reports bitrate error on web GUI page	Ignore the error, move off the page and return and the lower rate bitrate will be set
If you mount a Windows 7 share using Samba/CIFS you may run into "mount error(12): Cannot allocate memory" if you are using very large files on the Windows machine.	Refer to Microsoft technical details: <a href="#">Large Files are locking up Windows 7 32 bit and 64 bit</a> . The solution is to make two registry edits and then restart a service: <ol style="list-style-type: none"> <li>1. Set "HKLM\SYSTEM\CurrentControlSet\Control\Session Manager\Memory Management\LargeSystemCache" to "1".</li> <li>2. Set "HKLM\SYSTEM\CurrentControlSet\Services\LanmanServer\Parameters\Size" to "3".</li> <li>3. Restart the "server" service</li> </ol>
Cameras that use the NVR as a DHCP server could get assigned a different IP address after a NVR has been restored	Use either static IPs for cameras or a different DHCP server
VideoEdge Hybrids - Units time are lagging by 7-8 minutes even with a NTP server added and enabled on them	In current configuration, Windows XP machine with running Windows Time service is used as a NTP server. Unfortunately it looks like Microsoft (S)NTP implementation is not compatible with those used on Linux.  Installed windows version of ntpd server (GNU) on windows (this disables Windows Time service) and all NVR clients synchronize properly.
Removing video input from a device and not the audio input may cause an issue when attempting to add the video input back due to the device getting a different IP address	Use static IPs for all devices.

<b>VideoEdge NVR</b>	
<b>Description</b>	<b>Suggested Work-Around</b>
Limitation: Archive Storage require single CIF Folder for each NVR archiving	Recommend best practice using a separate folder for each NVR. This will also allow best performance for archiving and media culling.
Cameras that have been archiving, when deleted are no longer accessible through the device list.	Deleted archive cameras accessible through victor Vault
VENVR: Archiving cause victor live streaming pause and burst	When using archiving, this will add network traffic that may interfere video streaming. Workaround is to lower the video quality setting for archiving or separate the archiving traffic onto a different NIC.
NVR Archiving Limitation: CIF share requires user name and password for archiving	Workaround insure that the CIF share used for archiving has a user name and password
VENVR: hybrid recovery without reindex causes storedataculler corefiles	When attempting to recovery (reinstall) the software, if the video files are to be kept then a reindexing of the video needs to be executed,
VENVR: Active State of Dry Contacts is reversed on several cameras	The Active State of Dry Contacts is backwards for several cameras. Illustra 610 Box, 400 Bullet, Panasonic WV-NS202A, Samsung SNP-3371. Setting up dry contact must take this into account.
NVR unable to resolve when added by Host name.	Workaround is to add the NVR by its IP address in victor. This insures the failover, text streaming and unit notification work properly.
VENVR: Device Replacement: does not occur when password has been changed on camera	Replacing cameras only work if the camera is set to the default password.
VENVR: Device Replacement: Dry contacts do not stay enabled after device replacement	After replacing a device, check all settings on the device such dry contacts to insure the device is set to work properly.
Some Illustra cameras do not support IP change when they are on a different subnet from the NVR.	This is because the IP filtering in the camera is set to ON. It needs to be set to OFF.
If a camera has its audio association still added to the device list it cannot be rediscovered (if the IP has been changed and the camera is now a different IP)	Workaround is to delete the camera's video & audio from the device-list & audio-list after changing the camera's IP address.
Auto discovery > Camera Discovery >Deleting a camera > The associated audio channels are only deleted unless they are enabled.	IF the associated audio has not been enabled, then if the camera is deleted, the audio device remains until it is manually deleted.
VENVR hybrid 4.5.0.652 > Restarting the Video Driver service on the NVR created a Video Loss Alert	On occasion when changing camera configuration a video alert maybe generated followed by a video normal alert.
victor 4.5 – Recorder push update attempt from V4.4 reported a success but failed to update to 4.5. Push updates only work from V4.4 Patch 2 and NOT V4.4 release.	Workaround for V4.4 is to use the Software Update page of the NVR Web GUI.

# Cameras Supported

## American Dynamics

Supported American Dynamics cameras:

Model	CODEC Supported	Audio	I/O	PTZ Supported	Edge Based Motion Detection Supported	Edge Motion Detection Metadata	VideoEdge Versions Supported	Certification
<b>Video Encoders</b>								
ADEIP8H	H.264, MJPEG	Yes	16/0	Yes	No	No	4.0 - 4.5	Tested & Certified
ADEIP8M	MJPEG, MPEG4	Yes	16/0	Yes	No	No	4.0 - 4.5	Tested & Certified
<b>Box Cameras</b>								
ADCIPEBPN	MJPEG, MPEG4	Yes	1/0	No	No	No	4.0 - 4.5	Tested & Certified
ADCIPEBPPE	MJPEG, MPEG4	Yes	1/0	No	No	No	4.0 - 4.5	Tested & Certified
ADCIPEBPPU	MJPEG, MPEG4	Yes	1/0	No	No	No	4.0 - 4.5	Tested & Certified
ADCIPEBN	MJPEG, MPEG4	Yes	1/0	No	No	No	4.0 - 4.5	Tested & Certified
ADCIPEBPE	MJPEG, MPEG4	Yes	1/0	No	No	No	4.0 - 4.5	Tested & Certified
ADCIPEBPU	MJPEG, MPEG4	Yes	1/0	No	No	No	4.0 - 4.5	Tested & Certified
<b>Indoor Mini Dome Cameras</b>								
ADCIPE3312ICN	MJPEG, MPEG4	Yes	1/0	No	No	No	4.0 - 4.5	Tested & Certified
ADCIPE3312ISN	MJPEG, MPEG4	Yes	1/0	No	No	No	4.0 - 4.5	Tested & Certified
ADCIPE3312ICPE	MJPEG, MPEG4	Yes	1/0	No	No	No	4.0 - 4.5	Tested & Certified
ADCIPE3312ISPE	MJPEG, MPEG4	Yes	1/0	No	No	No	4.0 - 4.5	Tested & Certified
ADCIPE3312ICPU	MJPEG, MPEG4	Yes	1/0	No	No	No	4.0 - 4.5	Tested & Certified
ADCIPE3312ISPU	MJPEG, MPEG4	Yes	1/0	No	No	No	4.0 - 4.5	Tested & Certified
<b>Outdoor Mini Dome Cameras</b>								
ADCIPE3712OCN	MJPEG, MPEG4	Yes	1/0	No	No	No	4.0 - 4.5	Tested & Certified

ADCIPE37120 SN	MJPEG, MPEG4	Yes	1/0	No	No	No	4.0 - 4.5	Tested & Certified
ADCIPE37120 CPE	MJPEG, MPEG4	Yes	1/0	No	No	No	4.0 - 4.5	Tested & Certified
ADCIPE37120 OCPU	MJPEG, MPEG4	Yes	1/0	No	No	No	4.0 - 4.5	Tested & Certified
ADCIPE37120 SPU	MJPEG, MPEG4	Yes	1/0	No	No	No	4.0 - 4.5	Tested & Certified
ADCIPE37120 SPE	MJPEG, MPEG4	Yes	1/0	No	No	No	4.0 - 4.5	Tested & Certified
<b>IP Dome Cameras</b>								
ADVEIPSD22N	H.264, MJPEG, MPEG4	Yes	4/0	Yes	No	No	4.0 - 4.5	Tested & Certified
ADVEIPSD22P	H.264, MJPEG, MPEG4	Yes	4/0	Yes	No	No	4.0 - 4.5	Tested & Certified
ADVEIPSD35N	H.264, MJPEG, MPEG4	Yes	4/0	Yes	No	No	4.0 - 4.5	Tested & Certified
ADVEIPSD35P	H.264, MJPEG, MPEG4	Yes	4/0	Yes	No	No	4.0 - 4.5	Tested & Certified
<b>Illustra 210 Mini Dome Cameras</b>								
ADCi210-D111	H.264, MJPEG	Yes	1/0	No	Yes	Yes	4.1 - 4.5	Tested & Certified
ADCi210-D011	H.264, MJPEG	Yes	1/0	No	Yes	Yes	4.1 - 4.5	Tested & Certified
ADCi210-D121	H.264, MJPEG	Yes	1/0	No	Yes	Yes	4.1 - 4.5	Tested & Certified
ADCi210-D021	H.264, MJPEG	Yes	1/0	No	Yes	Yes	4.1 - 4.5	Tested & Certified
ADCi210-D113	H.264, MJPEG	Yes	1/0	No	Yes	Yes	4.1 - 4.5	Tested & Certified
ADCi210-D013	H.264, MJPEG	Yes	1/0	No	Yes	Yes	4.1 - 4.5	Tested & Certified
ADCi210-D123	H.264, MJPEG	Yes	1/0	No	Yes	Yes	4.1 - 4.5 5	Tested & Certified
ADCi210-D023	H.264, MJPEG	Yes	1/0	No	Yes	Yes	4.1 - 4.5	Tested & Certified
<b>Illustra 600 Mini Dome Cameras</b>								
ADCi600-D111	H.264, MJPEG	Yes	1/0	No	Yes	Yes	4.1 - 4.5	Tested & Certified
ADCi600-D011	H.264, MJPEG	Yes	1/0	No	Yes	Yes	4.1 - 4.5	Tested & Certified
ADCi600-D121	H.264, MJPEG	Yes	1/0	No	Yes	Yes	4.1 - 4.5	Tested & Certified
ADCi600-D021	H.264, MJPEG	Yes	1/0	No	Yes	Yes	4.1 - 4.5	Tested & Certified
ADCi600-D321	H.264, MJPEG	Yes	1/0	No	Yes	Yes	4.1 - 4.5	Tested & Certified

ADCi600-D131	H.264, MJPEG	Yes	1/0	No	Yes	Yes	4.1 - 4.5	Tested & Certified
ADCi600-D031	H.264, MJPEG	Yes	1/0	No	Yes	Yes	4.1 - 4.5	Tested & Certified
ADCi600-D141	H.264, MJPEG	Yes	1/0	No	Yes	Yes	4.1 - 4.5	Tested & Certified
ADCi600-D041	H.264, MJPEG	Yes	1/0	No	Yes	Yes	4.1 - 4.5	Tested & Certified
ADCi600-D341	H.264, MJPEG	Yes	1/0	No	Yes	Yes	4.1 - 4.5	Tested & Certified
ADCi600-D113	H.264, MJPEG	Yes	1/0	No	Yes	Yes	4.1 - 4.5	Tested & Certified
ADCi600-D013	H.264, MJPEG	Yes	1/0	No	Yes	Yes	4.1 - 4.5	Tested & Certified
ADCi600-D123	H.264, MJPEG	Yes	1/0	No	Yes	Yes	4.1 - 4.5	Tested & Certified
ADCi600-D323	H.264, MJPEG	Yes	1/0	No	Yes	Yes	4.1 - 4.5	Tested & Certified
ADCi600-D133	H.264, MJPEG	Yes	1/0	No	Yes	Yes	4.1 - 4.5	Tested & Certified
ADCi600-D033	H.264, MJPEG	Yes	1/0	No	Yes	Yes	4.1 - 4.5	Tested & Certified
ADCi600-D143	H.264, MJPEG	Yes	1/0	No	Yes	Yes	4.1 - 4.5	Tested & Certified
ADCi600-D043	H.264, MJPEG	Yes	1/0	No	Yes	Yes	4.1 - 4.5	Tested & Certified
ADCi600-D343	H.264, MJPEG	Yes	1/0	No	Yes	Yes	4.1 - 4.5	Tested & Certified
<b>Illustra 610 Mini Dome Cameras</b>								
ADCi610-D111	H.264, MJPEG	Yes	1/0	No	Yes	Yes	4.1 - 4.5	Tested & Certified
ADCi610-D011	H.264, MJPEG	Yes	1/0	No	Yes	Yes	4.1 - 4.5	Tested & Certified
ADCi610-D121	H.264, MJPEG	Yes	1/0	No	Yes	Yes	4.1 - 4.5	Tested & Certified
ADCi610-D021	H.264, MJPEG	Yes	1/0	No	Yes	Yes	4.1 - 4.5	Tested & Certified
ADCi610-D321	H.264, MJPEG	Yes	1/0	No	Yes	Yes	4.1 - 4.5	Tested & Certified
ADCi610-D131	H.264, MJPEG	Yes	1/0	No	Yes	Yes	4.1 - 4.5	Tested & Certified
ADCi610-D031	H.264, MJPEG	Yes	1/0	No	Yes	Yes	4.1 - 4.5	Tested & Certified
ADCi610-D141	H.264, MJPEG	Yes	1/0	No	Yes	Yes	4.1 - 4.5	Tested & Certified
ADCi610-D041	H.264, MJPEG	Yes	1/0	No	Yes	Yes	4.1 - 4.5	Tested & Certified
ADCi610-D341	H.264, MJPEG	Yes	1/0	No	Yes	Yes	4.1 - 4.5	Tested & Certified

ADCi610-D113	H.264, MJPEG	Yes	1/0	No	Yes	Yes	4.1 - 4.5	Tested & Certified
ADCi610-D013	H.264, MJPEG	Yes	1/0	No	Yes	Yes	4.1 - 4.5	Tested & Certified
ADCi610-D123	H.264, MJPEG	Yes	1/0	No	Yes	Yes	4.1 - 4.5	Tested & Certified
ADCi610-D023	H.264, MJPEG	Yes	1/0	No	Yes	Yes	4.1 - 4.5	Tested & Certified
ADCi610-D323	H.264, MJPEG	Yes	1/0	No	Yes	Yes	4.1 - 4.5	Tested & Certified
ADCi610-D133	H.264, MJPEG	Yes	1/0	No	Yes	Yes	4.1 - 4.5	Tested & Certified
ADCi610-D033	H.264, MJPEG	Yes	1/0	No	Yes	Yes	4.1 - 4.5	Tested & Certified
ADCi610-D143	H.264, MJPEG	Yes	1/0	No	Yes	Yes	4.1 - 4.5	Tested & Certified
ADCi610-D043	H.264, MJPEG	Yes	1/0	No	Yes	Yes	4.1 - 4.5	Tested & Certified
<b>Illustra 610LT Mini Dome Cameras</b>								
ADCi610LT-D111	H.264, MJPEG	No	No	No	Yes	Yes	4.1 - 4.5	Tested & Certified
ADCi610LT-D113	H.264, MJPEG	No	No	No	Yes	Yes	4.1 - 4.5	Tested & Certified
<b>Illustra 600 Telephoto Lens Mini Dome Cameras</b>								
ADCi600-D521	H.264, MJPEG	Yes	1/0	No	Yes	Yes	4.1 - 4.5	Tested & Certified
ADCi600-D541	H.264, MJPEG	Yes	1/0	No	Yes	Yes	4.1 - 4.5	Tested & Certified
ADCi600-D523	H.264, MJPEG	Yes	1/0	No	Yes	Yes	4.1 - 4.5	Tested & Certified
ADCi600-D543	H.264, MJPEG	Yes	1/0	No	Yes	Yes	4.1 - 4.5	Tested & Certified
<b>Illustra 610 Telephoto Lens Mini Dome Cameras</b>								
ADCi610-D521	H.264, MJPEG	Yes	1/0	No	Yes	Yes	4.1 - 4.5	Tested & Certified
ADCi610-D541	H.264, MJPEG	Yes	1/0	No	Yes	Yes	4.1 - 4.5	Tested & Certified
ADCi610-D523	H.264, MJPEG	Yes	1/0	No	Yes	Yes	4.1 - 4.5	Tested & Certified
ADCi610-D543	H.264, MJPEG	Yes	1/0	No	Yes	Yes	4.1 - 4.5	Tested & Certified
<b>Illustra 400 WDR Indoor Mini Dome Cameras</b>								
ADCi400-D011	H.264, MJPEG	Yes	1/0	No	No	No	4.0 - 4.5	Tested & Certified
ADCi400-D012	H.264, MJPEG	Yes	1/0	No	No	No	4.0 - 4.5	Tested & Certified
ADCi400-D013	H.264, MJPEG	Yes	1/0	No	No	No	4.0 - 4.5	Tested & Certified

ADCi400-D014	H.264, MJPEG	Yes	1/0	No	No	No	4.0 - 4.5	Tested & Certified
ADCi400-D031	H.264, MJPEG	Yes	1/0	No	No	No	4.0 - 4.5	Tested & Certified
ADCi400-D032	H.264, MJPEG	Yes	1/0	No	No	No	4.0 - 4.5	Tested & Certified
ADCi400-D033	H.264, MJPEG	Yes	1/0	No	No	No	4.0 - 4.5	Tested & Certified
ADCi400-D034	H.264, MJPEG	Yes	1/0	No	No	No	4.0 - 4.5	Tested & Certified
ADCi400-D051	H.264, MJPEG	Yes	1/0	No	No	No	4.0 - 4.5	Tested & Certified
ADCi400-D052	H.264, MJPEG	Yes	1/0	No	No	No	4.0 - 4.5	Tested & Certified
ADCi400-D053	H.264, MJPEG	Yes	1/0	No	No	No	4.0 - 4.5	Tested & Certified
ADCi400-D054	H.264, MJPEG	Yes	1/0	No	No	No	4.0 - 4.5	Tested & Certified
<b>Illustra 400 WDR Outdoor Mini Dome Cameras</b>								
ADCi400-D021	H.264, MJPEG	Yes	1/0	No	No	No	4.0 - 4.5	Tested & Certified
ADCi400-D022	H.264, MJPEG	Yes	1/0	No	No	No	4.0 - 4.5	Tested & Certified
ADCi400-D023	H.264, MJPEG	Yes	1/0	No	No	No	4.0 - 4.5	Tested & Certified
ADCi400-D024	H.264, MJPEG	Yes	1/0	No	No	No	4.0 - 4.5	Tested & Certified
ADCi400-D041	H.264, MJPEG	Yes	1/0	No	No	No	4.0 - 4.5	Tested & Certified
ADCi400-D042	H.264, MJPEG	Yes	1/0	No	No	No	4.0 - 4.5	Tested & Certified
ADCi400-D043	H.264, MJPEG	Yes	1/0	No	No	No	4.0 - 4.5	Tested & Certified
ADCi400-D044	H.264, MJPEG	Yes	1/0	No	No	No	4.0 - 4.5	Tested & Certified
ADCi400-D061	H.264, MJPEG	Yes	1/0	No	No	No	4.0 - 4.5	Tested & Certified
ADCi400-D062	H.264, MJPEG	Yes	1/0	No	No	No	4.0 - 4.5	Tested & Certified
ADCi400-D063	H.264, MJPEG	Yes	1/0	No	No	No	4.0 - 4.5	Tested & Certified
ADCi400-D064	H.264, MJPEG	Yes	1/0	No	No	No	4.0 - 4.5	Tested & Certified
<b>Illustra 400 WDR Bullet Cameras</b>								
ADCi400-B021	H.264, MJPEG	Yes	1/0	No	No	No	4.0 - 4.5	Tested & Certified
ADCi400-B022	H.264, MJPEG	Yes	1/0	No	No	No	4.0 - 4.5	Tested & Certified



ADCi400-B041	H.264, MJPEG	Yes	1/0	No	No	No	4.0 - 4.5	Tested & Certified
ADCi400-B042	H.264, MJPEG	Yes	1/0	No	No	No	4.0 - 4.5	Tested & Certified
ADCi400-B061	H.264, MJPEG	Yes	1/0	No	No	No	4.0 - 4.5	Tested & Certified
ADCi400-B062	H.264, MJPEG	Yes	1/0	No	No	No	4.0 - 4.5	Tested & Certified
<b>Illustra 400 Box Cameras</b>								
ADCi400-X001	H.264, MJPEG	Yes	1/0	No	No	No	4.0 - 4.5	Tested & Certified
ADCi400-X002	H.264, MJPEG	Yes	1/0	No	No	No	4.0 - 4.5	Tested & Certified
<b>Illustra 600/610 Bullet Cameras</b>								
ADCi600-B021	H.264, MJPEG	Yes	1/0	No	No	No	4.2.1 - 4.5	Tested & Certified
ADCi600-B041	H.264, MJPEG	Yes	1/0	No	No	No	4.2.1 - 4.5	Tested & Certified
ADCi610-B021	H.264, MJPEG	Yes	1/0	No	No	No	4.2.1 - 4.5	Tested & Certified
ADCi610-B041	H.264, MJPEG	Yes	1/0	No	No	No	4.2.1 - 4.5	Tested & Certified
<b>Illustra 600/610 Box Cameras</b>								
ADCi600-X011	H.264, MJPEG	Yes	1/0	No	No	No	4.2.1 - 4.5	Tested & Certified
ADCi610-X011	H.264, MJPEG	Yes	1/0	No	No	No	4.2.1 - 4.5	Tested & Certified
<b>Illustra 600LT Bullet Cameras</b>								
ADCi600LT-B021	H.264, MJPEG	No	No	No	No	No	4.2.1 - 4.5	Tested & Certified
<b>Illustra 600LT Box Cameras</b>								
ADCi600LT-X011	H.264, MJPEG	No	No	No	No	No	4.2.1 - 4.5	Tested & Certified
<b>Illustra 625 PTZ Cameras</b>								
ADCi625-P132	H.264, MJPEG	No	No	Yes	No	No	4.2.1 - 4.5	Tested & Certified
ADCi625-P122	H.264, MJPEG	No	No	Yes	No	No	4.2.1 - 4.5	Tested & Certified
ADCi625-P121	H.264, MJPEG	No	No	Yes	No	No	4.2.1 - 4.5	Tested & Certified
ADCi625-P124	H.264, MJPEG	No	No	Yes	No	No	4.2.1 - 4.5	Tested & Certified
ADCi625-P123	H.264, MJPEG	No	No	Yes	No	No	4.2.1 - 4.5	Tested & Certified
ADCi625-P232	H.264, MJPEG	Yes	4/0	Yes	No	No	4.3 - 4.5	Tested & Certified
ADCi625-P222	H.264, MJPEG	Yes	4/0	Yes	No	No	4.3 - 4.5	Tested & Certified

ADCi625-P221	H.264, MJPEG	Yes	4/0	Yes	No	No	4.3 - 4.5	Tested & Certified
ADCi625-P223	H.264, MJPEG	Yes	4/0	Yes	No	No	4.3 - 4.5	Tested & Certified
ADCi625-P224	H.264, MJPEG	Yes	4/0	Yes	No	No	4.3 - 4.5	Tested & Certified
<b>Illustra 610 Compact Mini-Bullet Cameras</b>								
ADCi610-M022	H.264, MJPEG	No	1/0	No	Yes	No	4.4 – 4.5	Tested & Certified
<b>Illustra 600/610 Compact Mini-Dome Cameras</b>								
ADCi600-M111	H.264, MJPEG	No	No	No	Yes	No	4.3 - 4.5	Tested & Certified
ADCi610-M111	H.264, MJPEG	No	No	No	Yes	No	4.3 - 4.5	Tested & Certified
<b>Illustra 825 Fisheye Cameras</b>								
ADCi825-F311	H.264, MJPEG	No	No	No	Yes	Yes	4.4 – 4.5	Tested & Certified
ADCi825-F312	H.264, MJPEG	No	No	No	Yes	Yes	4.4 – 4.5	Test ed & Cert
<b>Illustra Flex Series Cube</b>								
ADCi600F-W012	H.264, MJPEG	Yes	0/0	No	Yes	No	4.4 – 4.5	Tested & Certified
<b>Illustra Flex Series Box</b>								
ADCi600F-X002	H.264, MJPEG	Yes	1/0	No	Yes	No	4.4 – 4.5	Tested & Certified
ADCi800F-X002	H.264, MJPEG	Yes	1/0	No	Yes	No	4.4 – 4.5	Tested & Certified
<b>Illustra Flex Series Bullet</b>								
ADCi600F-B521	H.264, MJPEG	Yes	1/0	No	Yes	No	4.4 – 4.5	Tested & Certified
ADCi800F-B521	H.264, MJPEG	Yes	1/0	No	Yes	No	4.4 – 4.5	Tested & Certified
<b>Illustra Flex Series Dome</b>								
ADCi600F-D021	H.264, MJPEG	Yes	1/0	No	Yes	No	4.4 – 4.5	Tested & Certified
ADCi600F-D111	H.264, MJPEG	Yes	1/0	No	Yes	No	4.4 – 4.5	Tested & Certified
ADCi800F-D021	H.264, MJPEG	Yes	1/0	No	Yes	No	4.4 – 4.5	Tested & Certified
ADCi800F-D111	H.264, MJPEG	Yes	1/0	No	Yes	No	4.4 – 4.5	Tested & Certified

**Note –**

The Illustra Flex and API3 camera handlers support Generic cameras for any unlisted models. If a camera is not in the supported list but compatible with the Illustra Flex API or API3, VideoEdge will attempt to support it as a Generic camera. Only video and audio functions are supported for Generic cameras.

## ACTi Corporation

This version of the VideoEdge camera handler is fully integrated with ACTi Corporation line of IP cameras. ACTi has number of API's (Application Programming Interface) camera handlers to communicate with their cameras. This version of the VideoEdge NVR is fully integrated with the ACM models (cameras using firmware version v3.13.16-AC) and TCM models (cameras using firmware version v4.11.09-AC). As ACTi continues to release new cameras to the market, the VideoEdge camera handler provides a generic camera driver that can connect to any ACM or TCM cameras not listed in the available camera list. The generic ACTi driver will gather the required information and present this to the VideoEdge NVR

Supported ACTi Corporation cameras:

Model	CODEC Supported	Audio	I/O	VideoEdge Versions Supported	Certification
<b>Fixed Cameras</b>					
ACM5611	MJPEG	No	1/0	4.1 - 4.5	Works as designed
<b>Bullet Cameras</b>					
ACM1231	MJPEG	No	No	4.1 - 4.5	Tested & Certified
TCM1231	MJPEG, H.264	No	1/0	4.1 - 4.5	Works as designed
TCM1511	MJPEG, H.264	No	1/0	4.1 - 4.5	Works as designed
<b>Cube Cameras</b>					
ACM4201	MJPEG	No	1/0	4.1 - 4.5	Works as designed
TCM4201	MJPEG, H.264	No	1/0	4.1 - 4.5	Works as designed
<b>Fixed Dome Cameras</b>					
ACM3401	MJPEG	No	1/0	4.1 - 4.5	Works as designed
ACM3511	MJPEG	No	1/0	4.1 - 4.5	Works as designed
ACM3701	MJPEG	No	No	4.1 - 4.5	Works as designed
ACM7411	MJPEG	No	No	4.1 - 4.5	Works as designed
TCM3401	MJPEG, H.264	No	1/0	4.1 - 4.5	Works as designed
TCM3411	MJPEG, H.264	No	1/0	4.1 - 4.5	Works as designed
TCM3511	MJPEG, H.264	No	1/0	4.1 - 4.5	Tested & Certified
TCM7411	MJPEG, H.264	No	1/0	4.1 - 4.5	Works as designed
TCM7811	MJPEG, H.264	No	1/0	4.1 - 4.5	Works as designed
<b>Box Cameras</b>					
TCM5311	MJPEG, H.264	No	1/0	4.1 - 4.5	Tested & Certified
TCM5611	MJPEG, H.264	No	1/0	4.1 - 4.5	Works as designed
<b>Generic</b>					
All other models	Single (MJPEG)	No	No	4.1 - 4.5	Works as designed

## Arecont Vision

VideoEdge camera handler is fully integrated with the Arecont Vision line of megapixel cameras including full support for the 180° and 360° lines of panoramic view cameras. Arecont Vision cameras operating system (firmware) is continually evolving; please make sure your camera is running the most current firmware available from Arecont Vision (available from <http://www.arecontvision.com>). As Arecont Vision continues to release new cameras, there may be instances where specific Arecont Vision cameras are not listed in the supported camera list. A generic Arecont Vision camera handler is available for these cameras.

VideoEdge camera handler supports the following firmware versions:

- **M-JPEG cameras** – firmware version 64327 or higher
- **H.264/M-JPEG cameras** – firmware version 65139 or higher

Supported Arecont Vision cameras:

Model	CODEC Supported	Audio	I/O	VideoEdge Versions Supported	Certification
<b>Fixed Cameras</b>					
AV1115	H.264, MJPEG	No	No	4.0.1 - 4.5	Works as designed
AV1115DN	H.264, MJPEG	No	No	4.0.1 - 4.5	Works as designed
AV1115AI	H.264, MJPEG	No	No	4.0.1 - 4.5	Works as designed
AV1125	H.264	No	No	4.0.1 - 4.5	Works as designed
AV1125DN	H.264	No	No	4.0.1 - 4.5	Works as designed
AV1125IR	H.264, MJPEG	No	No	4.0.1 - 4.5	Works as designed
AV1300	MJPEG	No	No	4.0.1 - 4.5	Tested & Certified
AV1300DN	MJPEG	No	No	4.0.1 - 4.5	Tested & Certified
AV1300AI	MJPEG	No	No	4.0.1 - 4.5	Tested & Certified
AV1300M	MJPEG	No	No	4.0.1 - 4.5	Tested & Certified
AV1305	H.264, MJPEG	No	No	4.0.1 - 4.5	Tested & Certified
AV1305DN	H.264, MJPEG	No	No	4.0.1 - 4.5	Works as designed
AV1305AI	H.264, MJPEG	No	No	4.0.1 - 4.5	Tested & Certified
AV1310	MJPEG	No	No	4.0.1 - 4.5	Works as designed
AV1310DN	MJPEG	No	No	4.0.1 - 4.5	Works as designed
AV1315	H.264, MJPEG	No	No	4.0.1 - 4.5	Works as designed
AV1315DN	H.264, MJPEG	No	No	4.0.1 - 4.5	Works as designed
AV1325	H.264, MJPEG	No	No	4.0.1 - 4.5	Works as designed
AV1325DN	H.264, MJPEG	No	No	4.0.1 - 4.5	Works as designed
AV1325IR	H.264, MJPEG	No	No	4.0.1 - 4.5	Works as designed
AV2100	MJPEG	No	No	4.0 - 4.5	Tested & Certified
AV2100DN	MJPEG	No	No	4.0 - 4.5	Tested & Certified
AV2100AI	MJPEG	No	No	4.0 - 4.5	Tested & Certified
AV2100IR	MJPEG	No	No	4.0 - 4.5	Works as designed
AV2100M	MJPEG	No	No	4.0 - 4.5	Works as designed
AV2105	H.264, MJPEG	No	No	4.0 - 4.5	Tested & Certified
AV2105DN	H.264, MJPEG	No	No	4.0 - 4.5	Tested & Certified

AV2105AI	H.264, MJPEG	No	No	4.0 - 4.5	Works as designed
AV2110	MJPEG	No	No	4.0.1 - 4.5	Works as designed
AV2110DN	MJPEG	No	No	4.0.1 - 4.5	Works as designed
AV2115	H.264, MJPEG	No	No	4.0.1 - 4.5	Works as designed
AV2115DN	H.264, MJPEG	No	No	4.0.1 - 4.5	Works as designed
AV2115AI	H.264, MJPEG	No	No	4.0.1 - 4.5	Works as designed
AV2125	MJPEG	No	No	4.0.1 - 4.5	Works as designed
AV2125DN	MJPEG	No	No	4.0.1 - 4.5	Works as designed
AV2125IR	MJPEG	No	No	4.0.1 - 4.5	Works as designed
AV2805	H.264, MJPEG	No	No	4.0.1 - 4.5	Works as designed
AV2805DN	H.264, MJPEG	No	No	4.0.1 - 4.5	Works as designed
AV2815	H.264, MJPEG	No	No	4.0.1 - 4.5	Works as designed
AV2815DN	H.264, MJPEG	No	No	4.0.1 - 4.5	Works as designed
AV2825	H.264, MJPEG	No	No	4.0.1 - 4.5	Works as designed
AV2825DN	H.264, MJPEG	No	No	4.0.1 - 4.5	Works as designed
AV2825IR	H.264, MJPEG	No	No	4.0.1 - 4.5	Works as designed
AV3100	MJPEG	No	No	4.0 - 4.5	Tested & Certified
AV3100DN	MJPEG	No	No	4.0 - 4.5	Tested & Certified
AV3100AI	MJPEG	No	No	4.0 - 4.5	Works as designed
AV3105	H.264, MJPEG	No	No	4.0.1 - 4.5	Works as designed
AV3105DN	H.264, MJPEG	No	No	4.0.1 - 4.5	Works as designed
AV3105AI	H.264, MJPEG	No	No	4.0.1 - 4.5	Works as designed
AV3110	MJPEG	No	No	4.0.1 - 4.5	Works as designed
AV3110DN	MJPEG	No	No	4.0.1 - 4.5	Works as designed
AV3115	H.264, MJPEG	No	No	4.0.1 - 4.5	Works as designed
AV3115DN	H.264, MJPEG	No	No	4.0.1 - 4.5	Works as designed
AV3115AI	H.264, MJPEG	No	No	4.0.1 - 4.5	Works as designed
AV3125	H.264, MJPEG	No	No	4.0.1 - 4.5	Works as designed
AV3125DN	H.264, MJPEG	No	No	4.0.1 - 4.5	Works as designed
AV3125IR	H.264, MJPEG	No	No	4.0.1 - 4.5	Works as designed
AV3155	H.264, MJPEG	No	No	4.0.1 - 4.5	Tested & Certified
AV3155DN	H.264, MJPEG	No	No	4.0.1 - 4.5	Tested & Certified
AV5100	MJPEG	No	No	4.0 - 4.5	Works as designed
AV5100DN	MJPEG	No	No	4.0 - 4.5	Works as designed
AV5100AI	MJPEG	No	No	4.0 - 4.5	Works as designed
AV5100M	MJPEG	No	No	4.0 - 4.5	Works as designed
AV5105	H.264, MJPEG	No	No	4.0.1 - 4.5	Works as designed
AV5105DN	H.264, MJPEG	No	No	4.0.1 - 4.5	Works as designed
AV5105AI	H.264, MJPEG	No	No	4.0.1 - 4.5	Works as designed
AV5110	MJPEG	No	No	4.0.1 - 4.5	Works as designed
AV5110DN	MJPEG	No	No	4.0.1 - 4.5	Works as designed
AV5115	H.264, MJPEG	No	No	4.0.1 - 4.5	Works as designed
AV5115DN	H.264, MJPEG	No	No	4.0.1 - 4.5	Works as designed

AV5115AI	H.264, MJPEG	No	No	4.0.1 - 4.5	Works as designed
AV5125DN	H.264, MJPEG	No	No	4.0.1 - 4.5	Works as designed
<b>Mini Dome Cameras</b>					
AV1355	H.264, MJPEG	No	No	4.0 - 4.5	Tested & Certified
AV1355DN	H.264, MJPEG	No	No	4.0 - 4.5	Tested & Certified
AV2155	H.264, MJPEG	No	No	4.0 - 4.5	Tested & Certified
AV2155DN	H.264, MJPEG	No	No	4.0 - 4.5	Tested & Certified
AV5155	H.264, MJPEG	No	No	4.0 - 4.5	Tested & Certified
AV5155DN	H.264, MJPEG	No	No	4.0 - 4.5	Tested & Certified
<b>Panoramic Mini Dome Cameras</b>					
AV8180	MJPEG	No	No	4.0.1 - 4.5	Tested & Certified
AV8185	H.264, MJPEG	No	No	4.0.1 - 4.5	Tested & Certified
AV8185DN	H.264, MJPEG	No	No	4.0.1 - 4.5	Tested & Certified
AV8360	MJPEG	No	No	4.0.1 - 4.5	Tested & Certified
AV8365	H.264, MJPEG	No	No	4.0.1 - 4.5	Tested & Certified
AV8365DN	H.264, MJPEG	No	No	4.0.1 - 4.5	Tested & Certified
AV20185DN	H.264, MJPEG	No	No	4.3 - 4.5	Tested & Certified
AV20185CO	H.264, MJPEG	No	No	4.3 - 4.5	Works as designed
AV20365DN	H.264, MJPEG	No	No	4.3 - 4.5	Works as designed
AV20365CO	H.264, MJPEG	No	No	4.3 - 4.5	Works as designed
<b>MegaVideo Box Cameras</b>					
AV1115	H.264, MJPEG	No	No	4.0 - 4.5	Works as designed
AV1115DN	H.264, MJPEG	No	No	4.0 - 4.5	Works as designed
AV1115AI	H.264, MJPEG	No	No	4.0 - 4.5	Works as designed
AV1300AI	MJPEG	No	No	4.0.1 - 4.5	Tested & Certified
AV1300DN	MJPEG	No	No	4.0.1 - 4.5	Tested & Certified
AV1305	H.264, MJPEG	No	No	4.0 - 4.5	Works as designed
AV1305AI	H.264, MJPEG	No	No	4.0 - 4.5	Works as designed
AV1305DN	H.264, MJPEG	No	No	4.0 - 4.5	Works as designed
AV1310	MJPEG	No	No	4.0.1 - 4.5	Tested & Certified
AV1310DN	MJPEG	No	No	4.0.1 - 4.5	Tested & Certified
AV1315	H.264, MJPEG	No	No	4.0 - 4.5	Works as designed
AV1315DN	H.264, MJPEG	No	No	4.0 - 4.5	Works as designed
AV2100AI	MJPEG	No	No	4.0.1 - 4.5	Tested & Certified
AV2100DN	MJPEG	No	No	4.0.1 - 4.5	Tested & Certified
AV2105	H.264, MJPEG	No	No	4.0 - 4.5	Works as designed
AV2105AI	H.264, MJPEG	No	No	4.0 - 4.5	Works as designed
AV2105DN	H.264, MJPEG	No	No	4.0 - 4.5	Works as designed
AV2110	MJPEG	No	No	4.0.1 - 4.5	Tested & Certified
AV2110DN	MJPEG	No	No	4.0.1 - 4.5	Tested & Certified
AV2115	H.264, MJPEG	No	No	4.0 - 4.5	Works as designed
AV2115DN	H.264, MJPEG	No	No	4.0 - 4.5	Works as designed
AV2115AI	H.264, MJPEG	No	No	4.0 - 4.5	Works as designed

AV2805DN	H.264, MJPEG	No	No	4.0 - 4.5	Works as designed
AV2805AI	H.264, MJPEG	No	No	4.0 - 4.5	Works as designed
AV2815	H.264, MJPEG	No	No	4.0 - 4.5	Works as designed
AV2815DN	H.264, MJPEG	No	No	4.0 - 4.5	Works as designed
AV3110	MJPEG	No	No	4.0.1 - 4.5	Tested & Certified
AV3100AI	MJPEG	No	No	4.0.1 - 4.5	Tested & Certified
AV3100DN	MJPEG	No	No	4.0.1 - 4.5	Tested & Certified
AV3105AI	H.264, MJPEG	No	No	4.0 - 4.5	Works as designed
AV3105DN	H.264, MJPEG	No	No	4.0 - 4.5	Works as designed
AV3115	H.264, MJPEG	No	No	4.0 - 4.5	Works as designed
AV3115DN	H.264, MJPEG	No	No	4.0 - 4.5	Works as designed
AV3115AI	H.264, MJPEG	No	No	4.0 - 4.5	Works as designed
AV5100AI	MJPEG	No	No	4.0.1 - 4.5	Tested & Certified
AV5100DN	MJPEG	No	No	4.0.1 - 4.5	Tested & Certified
AV5105	H.264, MJPEG	No	No	4.0 - 4.5	Works as designed
AV5105AI	H.264, MJPEG	No	No	4.0 - 4.5	Works as designed
AV5105DN	H.264, MJPEG	No	No	4.0 - 4.5	Works as designed
AV5110	MJPEG	No	No	4.0.1 - 4.5	Tested & Certified
AV5110DN	MJPEG	No	No	4.0.1 - 4.5	Tested & Certified
AV5115	H.264, MJPEG	No	No	4.0 - 4.5	Works as designed
AV5115DN	H.264, MJPEG	No	No	4.0 - 4.5	Works as designed
AV5115AI	H.264, MJPEG	No	No	4.0 - 4.5	Works as designed
AV10005	MJPEG	No	No	4.3 - 4.5	Tested & Certified
AV10115	H.264, MJPEG	No	No	4.3 - 4.5	Works as designed
<b>MegaDome Dome Cameras</b>					
AV10255	H.264, MJPEG	No	No	4.3 - 4.5	Works as designed
AV1355	H.264, MJPEG	No	No	4.0 - 4.5	Works as designed
AV2155	H.264, MJPEG	No	No	4.0 - 4.5	Works as designed
AV3155	H.264, MJPEG	No	No	4.0 - 4.5	Works as designed
AV5155	H.264, MJPEG	No	No	4.0 - 4.5	Works as designed
AV1355	H.264, MJPEG	No	No	4.0 - 4.5	Works as designed
AV1355DN	H.264, MJPEG	No	No	4.0 - 4.5	Works as designed
AV2155DN	H.264, MJPEG	No	No	4.0 - 4.5	Works as designed
AV3155DN	H.264, MJPEG	No	No	4.0 - 4.5	Works as designed
AV5155DN	H.264, MJPEG	No	No	4.0 - 4.5	Works as designed
<b>MegaView Bullet Cameras</b>					
AV1325	H.264, MJPEG	No	No	4.0 - 4.5	Works as designed
AV1325IR	H.264, MJPEG	No	No	4.0 - 4.5	Works as designed
AV1325DN	H.264, MJPEG	No	No	4.0 - 4.5	Works as designed
AV2825	H.264, MJPEG	No	No	4.0 - 4.5	Works as designed
AV2825IR	H.264, MJPEG	No	No	4.0 - 4.5	Works as designed
AV2825DN	H.264, MJPEG	No	No	4.0 - 4.5	Works as designed
AV1125IR	H.264, MJPEG	No	No	4.0 - 4.5	Works as designed

AV1125DN	H.264, MJPEG	No	No	4.0 - 4.5	Works as designed
AV2125IR	H.264, MJPEG	No	No	4.0 - 4.5	Works as designed
AV2125DN	H.264, MJPEG	No	No	4.0 - 4.5	Works as designed
AV3125IR	H.264, MJPEGW	No	No	4.0 - 4.5	Works as designed
AV3125DN	H.264, MJPEG	No	No	4.0 - 4.5	Works as designed
AV5125IR	H.264, MJPEG	No	No	4.0 - 4.5	Works as designed
AV5125DN	H.264, MJPEG	No	No	4.0 - 4.5	Works as designed
<b>Generic</b>					
All other models	DPC*	DPC*	DPC*	4.0 - 4.5	Works as designed

\* DPC - depends on camera capability

**Note –**

Each of the 8xxx cameras are comprised of four individual cameras housed together as a “single camera”. Please make sure you have sufficient camera licenses available with your VideoEdge NVR. When adding cameras to the NVR ensure that four camera slots are available (e.g. when adding three separate cameras the first camera should be added to slot 1 (this camera will use slots

1,2,3,4), the second cameras should be added to slot 5 (it will use slots 5,6,7,8) and the third camera should be added to slot 9 (it will use 9,10,11,12), and so on.

## AXIS Communications

The VideoEdge camera handler is fully integrated with the AXIS communications line of IP cameras and video encoders. AXIS has number of API's (Application Programming Interface) camera handlers to communicate with their cameras. The VideoEdge NVR is fully integrated with the VAPIX<sup>®</sup> API Version 2 (cameras using firmware version 4.xx) and VAPIX<sup>®</sup> API Version 3 (cameras using firmware version 5.xx). As AXIS continues to release new cameras to the market, the VideoEdge camera handler provides a generic AXIS camera driver that can connect to any VAPIX<sup>®</sup> 2 & 3 camera. The generic driver will gather all required information, including camera name and functionality, and present it to the VideoEdge NVR.

Supported Axis devices:

Model	CODEC Supported	Audio	I/O	PTZ Supported	Edge Motion Detection	Edge Motion Detection Metadata	VideoEdge Versions Supported (Minimum Camera Pack Version)	Certification
<b>Encoders</b>								
M7001	H.264, MJPEG	Yes	0/0	Yes	Yes	Yes	4.0.1 - 4.5	Tested & Certified
Q7401	H.264, MJPEG	Yes	4/	Yes	Yes	Yes	4.0 - 4.5	Works as designed
Q7404	H.264, MJPEG	Yes	8	Yes	Yes	Yes	4.0.1 - 4.5	Tested & Certified
Q7406	H.264, MJPEG	Yes	2	Yes	Yes	Yes	4.0 - 4.5	Tested & Certified



Q7414	H.264, MJPEG	Yes	8	Yes	Yes	Yes	4.0 - 4.5	Tested & Certified
240Q	MJPEG, MPEG4	No	4/0	Yes	Yes	No	4.0.1 - 4.5	Works as designed
241Q	MJPEG, MPEG4	Yes	4/0	Yes	Yes	No	4.0 - 4.5	Works as designed
241QA	MJPEG, MPEG4	Yes	4/0	Yes	Yes	No	4.0.1 - 4.5	Works as designed
241S	MJPEG, MPEG4	No	4/0	Yes	Yes	No	4.0.1 - 4.5	Works as designed
241SA	MJPEG, MPEG4	Yes	4/0	Yes	Yes	No	4.0.1 - 4.5	Works as designed
243Q	MJPEG, MPEG4	Yes	4/0	Yes	Yes	No	4.0 - 4.5	Tested & Certified
243SA	MJPEG, MPEG4	Yes	4/0	Yes	Yes	No	4.0.1 - 4.5	Works as designed
247S	MJPEG, MPEG4	Yes	1/0	Yes	Yes	No	4.0.1 - 4.5	Works as designed
M7010	H.264, MJPEG	Yes	0/0	Yes	Yes	Yes	4.4 - 4.5	Works as designed
M7014	H.264, MJPEG	Yes	0/0	Yes	Yes	Yes	4.4 - 4.5	Works as designed
M7016	H.264, MJPEG	Yes	0/0	Yes	Yes	Yes	4.4 - 4.5	Works as designed
P7210	H.264, MJPEG	Yes	4	Yes	Yes	Yes	4.4 - 4.5	Works as designed
P7214	H.264, MJPEG	Yes	4	Yes	Yes	Yes	4.4 - 4.5	Works as designed
P7216	H.264, MJPEG	No	4	Yes	Yes	Yes	4.4 - 4.5	Works as designed
P7224	H.264, MJPEG	Yes	4	Yes	Yes	Yes	4.4 - 4.5	Works as designed
Q7411	H.264, MJPEG	Yes	4	Yes	Yes	Yes	4.4 - 4.5	Works as designed
Q7424-R	H.264, MJPEG	No	4	Yes	Yes	Yes	4.4 - 4.5	Works as designed
<b>Fixed Cameras</b>								
M1011	H.264, MJPEG, MPEG4	Yes	1/0	No	Yes	Yes	4.0.1 - 4.5	Works as designed
M1011-W	H.264, MJPEG, MPEG4	No	0/0	No	Yes	Yes	4.0 - 4.5	Tested & Certified
M1031-W	H.264, MJPEG, MPEG4	Yes	0/0	No	Yes	Yes	4.0 - 4.5	Tested & Certified
M1054	H.264, MJPEG	Yes	1/0	No	Yes	Yes	4.0.1 - 4.5	Tested & Certified
M1103	H.264, MJPEG	No	0/0	No	Yes	Yes	4.0.1 - 4.5	Works as designed
M1104	H.264, MJPEG	No	0/0	No	Yes	Yes	4.0.1 - 4.5	Works as designed

M1113	H.264, MJPEG	No	0/0	No	Yes	Yes	4.0.1 - 4.5	Works as designed
M1114	H.264, MJPEG	No	0/0	No	Yes	Yes	4.0 - 4.5	Tested & Certified
P1311	H.264, MJPEG, MPEG4	Yes	1/0	No	Yes	Yes	4.0 - 4.5	Tested & Certified
P1343	H.264, MJPEG, MPEG4	Yes	1/0	No	Yes	Yes	4.0.1 - 4.5	Tested & Certified
P1343-E	H.264, MJPEG, MPEG4	Yes	1/0	No	Yes	Yes	4.0.1 - 4.5	Works as designed
P1344	H.264, MJPEG, MPEG4	Yes	1/0	No	Yes	Yes	4.0 - 4.5	Tested & Certified
P1344-E	H.264, MJPEG, MPEG4	Yes	1/0	No	Yes	Yes	4.0.1 - 4.5	Works as designed
P1346	H.264, MJPEG, MPEG4	Yes	1/0	No	Yes	Yes	4.0 - 4.5	Tested & Certified
P1346-E	H.264, MJPEG, MPEG4	Yes	1/0	No	Yes	Yes	4.0.1 - 4.5	Works as designed
P1347	H.264, MJPEG, MPEG4	Yes	1/0	No	Yes	Yes	4.0.1 - 4.5	Tested & Certified
P1347-E	H.264, MJPEG, MPEG4	Yes	1/0	No	Yes	Yes	4.0.1 - 4.5	Works as designed
Q1755	H.264, MJPEG	Yes	2	Zoom only	Yes	Yes	4.0 - 4.5	Tested & Certified
Q1755-E	H.264, MJPEG	Yes	2	Zoom only	Yes	Yes	4.0.1 - 4.5	Works as designed
206	MJPEG, MPEG4	No	0/0	No	No	No	4.0.1 - 4.5	Works as designed
206-M	MJPEG, MPEG4	No	0/0	No	No	No	4.0.1 - 4.5	Works as designed
206-W	MJPEG, MPEG4	No	0/0	No	No	No	4.0.1 - 4.5	Works as designed
207	MJPEG, MPEG4	Yes	1/0	No	Yes	No	4.0.1 - 4.5	Works as designed
207-MW	MJPEG, MPEG4	Yes	1/0	No	Yes	No	4.0.1 - 4.5	Works as designed
207-W	MJPEG, MPEG4	Yes	1/0	No	Yes	No	4.0.1 - 4.5	Works as designed
210	MJPEG, MPEG4	Yes	1/0	No	Yes	No	4.0 - 4.5	Tested & Certified
210A	MJPEG, MPEG4	Yes	1/0	No	Yes	No	4.0 - 4.5	Tested & Certified
211	MJPEG, MPEG4	Yes	1/0	No	Yes	No	4.0.1 - 4.5	Works as designed
211-A	MJPEG, MPEG4	Yes	1/0	No	Yes	No	4.0 - 4.5	Tested & Certified
211-M	MJPEG, MPEG4	Yes	1/0	No	Yes	No	4.0 - 4.5	Tested & Certified

211-W	MJPEG, MPEG4	Yes	1/0	No	Yes	No	4.0 - 4.5	Tested & Certified
223M	MJPEG, MPEG4	No	2/0	No	No	No	4.0.1 - 4.5	Tested & Certified
225FD	MJPEG, MPEG4	No	2/0	No	Yes	No	4.0 - 4.5	Tested & Certified
M1004-W	H.264, MJPEG	No	1/1	No	Yes	Yes	4.4 - 4.5	Works as designed
M1013	H.264, MJPEG	No	0/0	No	Yes	Yes	4.4 - 4.5	Works as designed
M1014	H.264, MJPEG	No	0/0	No	Yes	Yes	4.4 - 4.5	Works as designed
M1033-W	H.264, MJPEG	Yes	1/1	No	Yes	Yes	4.4 - 4.5	Works as designed
M1034-W	H.264, MJPEG	Yes	1/1	No	Yes	Yes	4.4 - 4.5	Works as designed
M1054	H.264, MJPEG	Yes	1/1	No	Yes	Yes	4.4 - 4.5	Tested & Certified
M1143-L	H.264, MJPEG	No	0/0	No	Yes	Yes	4.4 - 4.5	Works as designed
M1144-L	H.264, MJPEG	No	0/0	No	Yes	Yes	4.4 - 4.5	Works as designed
M2014-E	H.264, MJPEG	No	1/1	No	Yes	Yes	4.4 - 4.5	Works as designed
P1353	H.264, MJPEG	Yes	1/1	No	Yes	Yes	4.4 - 4.5	Works as designed
P1354	H.264, MJPEG	Yes	1/1	No	Yes	Yes	4.4 - 4.5	Works as designed
P1355	H.264, MJPEG	Yes	1/1	No	Yes	Yes	4.4 - 4.5	Works as designed
P1357	H.264, MJPEG	Yes	1/1	No	Yes	Yes	4.4 - 4.5	Tested & Certified
Q1602	H.264, MJPEG	Yes	1/1	No	Yes	Yes	4.4 - 4.5	Works as designed
Q1602-E	H.264, MJPEG	Yes	1/1	No	Yes	Yes	4.4 - 4.5	Works as designed
Q1604	H.264, MJPEG	Yes	1/1	No	Yes	Yes	4.4 - 4.5	Works as designed
Q1604-E	H.264, MJPEG	Yes	1/1	No	Yes	Yes	4.4 - 4.5	Works as designed
Q1765-LE	H.264, MJPEG	Yes	2/2	Zoom only	Yes	Yes	4.4 - 4.5	Works as designed
<b>Fixed Dome Cameras</b>								
M3011	H.264, MJPEG, MPEG4	No	0/0	No	Yes	Yes	4.0 - 4.5	Works as designed
M3014	H.264, MJPEG	No	0/0	No	Yes	Yes	4.0 - 4.5	Tested & Certified
M3113-R	H.264, MJPEG	No	0/0	No	Yes	Yes	4.0.1 - 4.5	Works as designed

M3113-VE	H.264, MJPEG	No	0/0	No	Yes	Yes	4.0.1 - 4.5	Works as designed
M3114-R	H.264, MJPEG	No	0/0	No	Yes	Yes	4.0.1 - 4.5	Works as designed
M3114-VE	H.264, MJPEG	No	0/0	No	Yes	Yes	4.0.1 - 4.5	Works as designed
M3203	H.264, MJPEG	No	0/0	No	Yes	Yes	4.0 - 4.5	Tested & Certified
M3203-V	H.264, MJPEG	No	0/0	No	Yes	Yes	4.0 - 4.5	Works as designed
M3204	H.264, MJPEG	Yes	1/0	No	Yes	Yes	4.1 - 4.5	Tested & Certified
P3301	H.264, MJPEG	Yes	1/0	No	Yes	Yes	4.0 - 4.5	Tested & Certified
P3301-V	H.264, MJPEG	Yes	1/0	No	Yes	Yes	4.0 - 4.5	Works as designed
P3304	H.264, MJPEG	Yes	1/0	No	Yes	Yes	4.0 - 4.5	Tested & Certified
P3304-V	H.264, MJPEG	Yes	1/0	No	Yes	Yes	4.0 - 4.5	Works as designed
P3343	H.264, MJPEG	Yes	1/0	No	Yes	Yes	4.0 - 4.5	Tested & Certified
P3343-V	H.264, MJPEG	Yes	1/0	No	Yes	Yes	4.0 - 4.5	Works as designed
P3343-VE	H.264, MJPEG	Yes	1/0	No	Yes	Yes	4.0 - 4.5	Works as designed
P3344	H.264, MJPEG	Yes	1/0	No	Yes	Yes	4.0 - 4.5	Tested & Certified
P3344-V	H.264, MJPEG	Yes	1/0	No	Yes	Yes	4.0 - 4.5	Works as designed
P3344-VE	H.264, MJPEG	Yes	1/0	No	Yes	Yes	4.0 - 4.5	Works as designed
P3346	H.264, MJPEG	Yes	1/0	No	Yes	Yes	4.0.1 - 4.5	Tested & Certified
P3346-V	H.264, MJPEG	Yes	1/0	No	Yes	Yes	4.0.1 - 4.5	Works as designed
P3346-VE	H.264, MJPEG	Yes	1/0	No	Yes	Yes	4.0.1 - 4.5	Works as designed
209FD	MJPEG, MPEG4	No	0/0	No	Yes	No	4.0 - 4.5	Tested & Certified
209FD-R	MJPEG, MPEG4	No	0/0	No	Yes	No	4.0.1 - 4.5	Works as designed
209MFD	MJPEG, MPEG4	No	0/0	No	Yes	No	4.0 - 4.5	Tested & Certified
209MFD-R	MJPEG, MPEG4	No	0/0	No	Yes	No	4.0.1 - 4.5	Works as designed
216FD	MJPEG, MPEG4	Yes	1/0	No	Yes	No	4.0 - 4.5	Works as designed

216FD-V	MJPEG, MPEG4	Yes	1/0	No	Yes	No	4.0.1 - 4.5	Works as designed
216MFD	MJPEG, MPEG4	Yes	1/0	No	Yes	No	4.0.1 - 4.5	Works as designed
216MFD-V	MJPEG, MPEG4	Yes	1/0	No	Yes	No	4.0.1 - 4.5	Works as designed
M3004-V	H.264, MJPEG	No	0/0	No	Yes	Yes	4.4 - 4.5	Works as designed
M3005-V	H.264, MJPEG	No	0/0	No	Yes	Yes	4.4 - 4.5	Works as designed
M3006-V	H.264, MJPEG	No	0/0	No	Yes	Yes	4.4 - 4.5	Works as designed
M3007-P	H.264, MJPEG	No	0/0	No	Yes	Yes	4.4 - 4.5	Works as designed
M3007-PV	H.264, MJPEG	No	0/0	No	Yes	Yes	4.4 - 4.5	Tested & Certified
M3024-LVE	H.264, MJPEG	No	1/1	No	Yes	Yes	4.4 - 4.5	Works as designed
M3025-VE	H.264, MJPEG	No	1/1	No	Yes	Yes	4.4 - 4.5	Works as designed
M3026-VE	H.264, MJPEG	No	1/1	No	Yes	Yes	4.4 - 4.5	Works as designed
P3353	H.264, MJPEG	No	0/0	No	Yes	Yes	4.4 - 4.5	Works as designed
P3354	H.264, MJPEG	No	0/0	No	Yes	Yes	4.4 - 4.5	Works as designed
P3363-V	H.264, MJPEG	Yes	1/1	No	Yes	Yes	4.4 - 4.5	Works as designed
P3363-VE	H.264, MJPEG	Yes	1/1	No	Yes	Yes	4.4 - 4.5	Works as designed
P3364-V	H.264, MJPEG	Yes	1/1	No	Yes	Yes	4.4 - 4.5	Works as designed
P3364-VE	H.264, MJPEG	Yes	1/1	No	Yes	Yes	4.4 - 4.5	Works as designed
P3384-V	H.264, MJPEG	Yes	1/1	No	Yes	Yes	4.4 - 4.5	Works as designed
P3384-VE	H.264, MJPEG	Yes	1/1	No	Yes	Yes	4.4 - 4.5	Works as designed
P3367-V	H.264, MJPEG	Yes	1/1	No	Yes	Yes	4.4 - 4.5	Works as designed
P3367-VE	H.264, MJPEG	Yes	1/1	No	Yes	Yes	4.4 - 4.5	Works as designed
<b>Covert cameras</b>								
P1204	H.264, MJPEG	No	1/1	No	Yes	Yes	4.4 - 4.5	Works as designed
P1214	H.264, MJPEG	No	1/1	No	Yes	Yes	4.4 - 4.5	Works as designed
P1214-E	H.264, MJPEG	No	1/1	No	Yes	Yes	4.4 - 4.5	Works as designed

P8513	H.264, MJPEG	No	0/0	No	Yes	Yes	4.4 - 4.5	Works as designed
P8514	H.264, MJPEG	No	0/0	No	Yes	Yes	4.4 - 4.5	Works as designed
<b>PTZ Cameras</b>								
212PTZ	MJPEG, MPEG4	Yes	1/0	Yes	Yes	No	4.0 - 4.5	Tested & Certified
212PTZ -V	MJPEG, MPEG4	Yes	1/0	Yes	Yes	No	4.0.1 - 4.5	Works as designed
213PTZ	MJPEG, MPEG4	Yes	2/0	Yes	Yes	No	4.0.1 - 4.5	Works as designed
214PTZ	MJPEG, MPEG4	Yes	1/0	Yes	Yes	No	4.0.1 - 4.5	Works as designed
215PTZ	MJPEG, MPEG4	Yes	1/0	Yes	Yes	No	4.0 - 4.5	Works as designed
215PTZ -E	MJPEG, MPEG4	Yes	1/0	Yes	Yes	No	4.0.1 - 4.5	Tested & Certified
<b>PTZ Dome Cameras</b>								
P5512	H.264, MJPEG	Yes	4	Yes	Yes	Yes	4.0.1 - 4.5	Tested & Certified
P5512-E	H.264, MJPEG	Yes	4	Yes	Yes	Yes	4.0.1 - 4.5	Works as designed
P5522	H.264, MJPEG	Yes	4	Yes	Yes	Yes	4.0.1 - 4.5	Tested & Certified
P5522-E	H.264, MJPEG	Yes	4	Yes	Yes	Yes	4.0.1 - 4.5	Works as designed
P5532	H.264, MJPEG	Yes	4	Yes	Yes	Yes	4.0.1 - 4.5	Tested & Certified
P5532-E	H.264, MJPEG	Yes	4	Yes	Yes	Yes	4.0.1 - 4.5	Works as designed
P5534	H.264, MJPEG	Yes	4	Yes	Yes	Yes	4.0.1 - 4.5	Works as designed
P5534-E	H.264, MJPEG	Yes	4	Yes	Yes	Yes	4.0.1 - 4.5	Works as designed
Q6032-E	H.264, MJPEG	No	0/0	Yes	Yes	Yes	4.0 - 4.5	Works as designed
Q6034	H.264, MJPEG	No	0/0	Yes	Yes	Yes	4.0.1 - 4.5	Works as designed
Q6034-E	H.264, MJPEG	No	0/0	Yes	Yes	Yes	4.0.1 - 4.5	Works as designed
231D+	MJPEG, MPEG4	No	0/0	Yes	Yes	No	4.0.1 - 4.5	Tested & Certified
232D+	MJPEG, MPEG4	No	0/0	Yes	Yes	No	4.0.1 - 4.5	Works as designed
233D	MJPEG, MPEG4	Yes	4/4	Yes	Yes	No	4.0 - 4.5	Tested & Certified

M5013	H.264, MJPEG	No	0/0	Yes	Yes	Yes	4.1 - 4.5	Works as designed
M5014	H.264, MJPEG	No	0/0	Yes	Yes	Yes	4.1 - 4.5	Tested & Certified
Q6035	H.264, MJPEG	Yes	4	Yes	Yes	Yes	4.4 - 4.5	Tested & Certified
Q6035-E	H.264, MJPEG	Yes	4	Yes	Yes	Yes	4.4 - 4.5	Works as designed
Q6035-C	H.264, MJPEG	No	2	Yes	Yes	Yes	4.4 - 4.5	Works as designed
Q6042	H.264, MJPEG	Yes	2	Yes	Yes	Yes	4.4 - 4.5	Works as designed
Q6042-E	H.264, MJPEG	No	0/0	Yes	Yes	Yes	4.4 - 4.5	Works as designed
Q6044	H.264, MJPEG	Yes	2	Yes	Yes	Yes	4.4 - 4.5	Works as designed
Q6044-E	H.264, MJPEG	No	0/0	Yes	Yes	Yes	4.4 - 4.5	Works as designed
Q6045	H.264, MJPEG	Yes	2	Yes	Yes	Yes	4.4 - 4.5	Works as designed
Q6045-E	H.264, MJPEG	No	0/0	Yes	Yes	Yes	4.4 - 4.5	Works as designed
P5414-E	H.264, MJPEG	Yes	4	Yes	Yes	Yes	4.4 - 4.5	Works as designed
P5415-E	H.264, MJPEG	Yes	4	Yes	Yes	Yes	4.4 - 4.5	Works as designed
P5544	H.264, MJPEG	Yes	4	Yes	Yes	Yes	4.4 - 4.5	Works as designed
<b>Thermal Cameras</b>								
Q1910	H.264, MJPEG	Yes	2	No	Yes	Yes	4.0.1 - 4.5	Tested & Certified
Q1910-E	H.264, MJPEG	Yes	2	No	Yes	Yes	4.0.1 - 4.5	Works as designed
Q1921	H.264, MJPEG	Yes	2	No	Yes	Yes	4.0.1 - 4.5	Tested & Certified
Q1921-E	H.264, MJPEG	Yes	2	No	Yes	Yes	4.0.1 - 4.5	Works as designed
Q1922	H.264, MJPEG	Yes	2	No	Yes	Yes	4.4 - 4.5	Works as designed
Q1922-E	H.264, MJPEG	Yes	2	No	Yes	Yes	4.4 - 4.5	Works as designed
Q1931-E	H.264, MJPEG	Yes	2	No	Yes	Yes	4.4 - 4.5	Works as designed
Q8721-E	H.264, MJPEG	Yes	0/0	Yes	Yes	Yes	4.4 - 4.5	Works as designed
Q8722-E	H.264, MJPEG	Yes	0/0	Yes	Yes	Yes	4.4 - 4.5	Works as designed
<b>Audio I/O Box</b>								

P8221	NA	Yes	8	Yes	No	No	4.4 - 4.5	Tested & Certified
<b>Generic</b>								
All other models	DPC*	DPC*	DPC*	DPC*	DPC*	DPC*	4.0.1 – 4.5	Works as designed

\* DPC - depends on camera capability

### Note –

For devices in I/O column which have 1 number present i.e “2, 4 or 8” this is because the I/O ports are configurable. In the case of 2 there could be 2/0, 0/2 or 1/1. In the case of 4 there could be 4/0, 0/4, 2/2, 1/3 etc.

## Bosch

VideoEdge camera handler is fully integrated with the Bosch communications line of IP cameras. The VideoEdge NVR is fully integrated with the cameras (with Bosch API version 3.0). As Bosch continues to release new cameras to the market, the VideoEdge camera handler provides a generic Bosch camera driver that can connect to (compatible with Bosch API version 3.0) camera.

Supported Bosch cameras:

Model	CODEC Supported	Audio	I/O	VideoEdge Versions Supported	Certification
<b>AutoDome (Supported Firmware v15500552)</b>					
VJR-821-ICCV	H.264, MJPEG	Yes	2/0	4.2.1 - 4.5	Works as designed
VJR-811-ICCV	H.264, MJPEG	Yes	2/0	4.2.1 - 4.5	Works as designed
VJR-821-IWCV	H.264, MJPEG	Yes	2/0	4.2.1 - 4.5	Works as designed
VJR-811-IWCV	H.264, MJPEG	Yes	2/0	4.2.1 - 4.5	Tested & Certified
VJR-821-ICTV	H.264, MJPEG	Yes	2/0	4.2.1 - 4.5	Works as designed
VJR-811-ICTV	H.264, MJPEG	Yes	2/0	4.2.1 - 4.5	Works as designed
VJR-821-IWTV	H.264, MJPEG	Yes	2/0	4.2.1 - 4.5	Works as designed
VJR-811-IWTV	H.264, MJPEG	Yes	2/0	4.2.1 - 4.5	Works as designed
VG5-825-ECEV	H.264, MJPEG	Yes	2/0	4.2.1 - 4.5	Tested & Certified
VG5-825-ETEV	H.264, MJPEG	Yes	2/0	4.2.1 - 4.5	Works as designed
<b>NBN (Supported Firmware v5950050)</b>					
Dinion NBN-498-28	H.264, MJPEG	Yes	2/0	4.2.1 - 4.5	Tested & Certified
Dinion NBN-498-28V	H.264, MJPEG	Yes	2/0	4.2.1 - 4.5	Works as designed
Dinion NBN-498-28WV	H.264, MJPEG	Yes	2/0	4.2.1 - 4.5	Works as designed
Dinion NBN-498-28W	H.264, MJPEG	Yes	2/0	4.2.1 - 4.5	Works as designed
Dinion NBN-921-P	H.264, MJPEG	Yes	2/0	4.2.1 - 4.5	Tested & Certified
Dinion NBN-921-2P	H.264, MJPEG	Yes	2/0	4.2.1 - 4.5	Works as designed
Dinion NBN-921-IP	H.264, MJPEG	Yes	2/0	4.2.1 - 4.5	Works as designed
Dinion NBN-832V-P	H.264, MJPEG	Yes	2/0	4.2.1 - 4.5	Works as designed
Dinion NBN-832V-IP	H.264, MJPEG	Yes	2/0	4.2.1 - 4.5	Tested & Certified
Dinion NBC-265-P	H.264, MJPEG	Yes	1/0	4.2.1 - 4.5	Tested & Certified



AutoDome 700 (Supported Firmware v5.80.0625)					
VG5-713-CCE2	H.264, MJPEG	Yes	2/0	4.3 - 4.5	Works as designed
VG5-723-CCE2	H.264, MJPEG	Yes	2/0	4.3 - 4.5	Works as designed
VG5-713-ECE2	H.264, MJPEG	Yes	2/0	4.3 - 4.5	Works as designed
VG5-714-ECE2	H.264, MJPEG	Yes	2/0	4.3 - 4.5	Works as designed
VG5-723-ECE2	H.264, MJPEG	Yes	2/0	4.3 - 4.5	Works as designed
VG5-724-ECE2	H.264, MJPEG	Yes	2/0	4.3 - 4.5	Works as designed
VG4 AutoDome Series (Supported Firmware v5.72)					
VG4-100 Series	H.264, MJPEG	Yes	2/0	4.4 - 4.5	Works as designed
VG4-200 Series	H.264, MJPEG	Yes	2/0	4.4 - 4.5	Works as designed
VG4-300 Series	H.264, MJPEG	Yes	2/0	4.4 - 4.5	Works as designed
VG4-500i Series	H.264, MJPEG	Yes	2/0	4.4 - 4.5	Works as designed
Generic					
All other models	Dual Stream (H.264, MJPEG, MPEG4)	Yes	DPC*	4.4 - 4.5	Works as designed

\* DPC - depends on camera capability

## CBC

VideoEdge camera handler is fully integrated with the CBC megapixel cameras. CBC cameras operating system (firmware) is continually evolving; please make sure your camera is running the most current firmware available.

Supported CBC Cameras:

Model	CODEC Supported	Audio	I/O	VideoEdge Versions Supported	Certification
Fixed IP Cameras					
MP1A	MJPEG	No	No	4.0.1 - 4.5	Works as designed
MP1DN	H.264, MJPEG	No	No	4.0.1 - 4.5	Works as designed
MP2A	MJPEG	No	No	4.0.1 - 4.5	Tested & Certified
MP2DN	H.264, MJPEG	No	No	4.0.1 - 4.5	Works as designed
MP3DN	H.264, MJPEG	No	No	4.0.1 - 4.5	Tested & Certified
MP5A	MJPEG	No	No	4.0.1 - 4.5	Works as designed
MP5DN	H.264, MJPEG	No	No	4.0.1 - 4.5	Works as designed
Indoor Dome Cameras					
MP8D-L4	MJPEG	No	No	4.0.1 - 4.5	Works as designed
Generic					
All other models	Dual Stream (H.264+MJPEG)	Yes	DPC*	4.0.1 - 4.5	Works as designed

\* DPC - depends on camera capability

## Dahua

This VideoEdge camera handler is fully integrated with the Dahua line of IP cameras. Dahua, generally, doesn't change the core API interface for their cameras. This VideoEdge camera handler is

based on the Dahua core API package version DAHUA\_HTTP\_API\_FOR\_IPC\_V1.30. As Dahua continue to release new cameras there may be instances where specific Dahua cameras are not listed in these release notes. A generic Dahua camera handler is available for these cameras.

Supported Dahua cameras:

Model	CODEC Supported	Audio	I/O	Edge Based Motion Detection Supported	PTZ	VideoEdge Version Supported	Certification
<b>Fixed Box</b>							
IPC-HF3500	H.264, MJPEG	Yes	1/0	Yes	N/A	4.4 - 4.5	Works as designed
IPC-HF3301	H.264, MJPEG	Yes	1/0	Yes	N/A	4.4 - 4.5	Works as designed
IPC-HF3300	H.264, MJPEG	Yes	1/0	Yes	N/A	4.4 - 4.5	Works as designed
IPC-HF3200	H.264, MJPEG	Yes	1/0	Yes	N/A	4.4 - 4.5	Works as designed
IPC-HF3101	H.264, MJPEG	Yes	1/0	Yes	N/A	4.4 - 4.5	Tested & Certified
IPC-HF3100	H.264, MJPEG	Yes	1/0	Yes	N/A	4.4 - 4.5	Works as designed
IPC-HF3110	H.264, MJPEG	Yes	1/0	Yes	N/A	4.4 - 4.5	Works as designed
IPC-HFW3301C	H.264, MJPEG	Yes	1/0	Yes	N/A	4.4 - 4.5	Works as designed
IPC-HFW3300	H.264, MJPEG	Yes	2/0	Yes	N/A	4.4 - 4.5	Works as designed
IPC-HFW3300C	H.264, MJPEG	Yes	2/0	Yes	N/A	4.4 - 4.5	Works as designed
IPC-HFW3200C	H.264, MJPEG	Yes	2/0	Yes	N/A	4.4 - 4.5	Works as designed
IPC-HFW3200S	H.264, MJPEG	No	No	Yes	N/A	4.4 - 4.5	Works as designed
IPC-HFW3101C	H.264, MJPEG	Yes	2/0	Yes	N/A	4.4 - 4.5	Works as designed
IPC-HFW2100	H.264, MJPEG	No	0/0	Yes	N/A	4.4 - 4.5	Works as designed
IPC-HFW3110	H.264, MJPEG	Yes	2/0	Yes	N/A	4.4 - 4.5	Works as designed
<b>Dome</b>							
IPC-HDB3301	H.264, MJPEG	Yes	2/0	Yes	N/A	4.4 - 4.5	Works as designed
IPC-HDB3301-DI	H.264, MJPEG	Yes	2/0	Yes	N/A	4.4 - 4.5	Works as designed
IPC-HDB3300	H.264, MJPEG	Yes	2/0	Yes	N/A	4.4 - 4.5	Tested & Certified
IPC-HDB3200	H.264, MJPEG	Yes	1/0	Yes	N/A	4.4 - 4.5	Works as designed
IPC-HDB3200-DI	H.264, MJPEG	Yes	1/0	Yes	N/A	4.4 - 4.5	Tested & Certified
IPC-HD3200	H.264, MJPEG	Yes	1/0	Yes	N/A	4.4 - 4.5	Works as designed
IPC-HDB3200C	H.264, MJPEG	No	0/0	Yes	N/A	4.4 - 4.5	Works as designed
IPC-HDB3101	H.264, MJPEG	Yes	1/0	Yes	N/A	4.4 - 4.5	Works as designed
IPC-HDB3101-DI	H.264, MJPEG	Yes	1/0	Yes	N/A	4.4 - 4.5	Works as designed
IPC-HDB3100	H.264, MJPEG	Yes	1/0	Yes	N/A	4.4 - 4.5	Works as designed
IPC-HD3100	H.264, MJPEG	Yes	1/0	Yes	N/A	4.4 - 4.5	Works as designed
IPC-HD2100	H.264, MJPEG	No	0/0	Yes	N/A	4.4 - 4.5	Works as designed
IPC-HDB3110	H.264, MJPEG	Yes	2/0	Yes	N/A	4.4 - 4.5	Works as designed
IPC-HDBW3301	H.264, MJPEG	Yes	2/0	Yes	N/A	4.4 - 4.5	Works as designed
IPC-HDBW3301-DI	H.264, MJPEG	Yes	2/0	Yes	N/A	4.4 - 4.5	Works as designed
IPC-HDBW3300	H.264, MJPEG	Yes	2/0	Yes	N/A	4.4 - 4.5	Works as designed

IPC-HDBW3200	H.264, MJPEG	Yes	1/0	Yes	N/A	4.4 - 4.5	Works as designed
IPC-HDBW3200-DI	H.264, MJPEG	Yes	1/0	Yes	N/A	4.4 - 4.5	Tested & Certified
IPC-HDW3200	H.264, MJPEG	Yes	1/0	Yes	N/A	4.4 - 4.5	Works as designed
IPC-HDW3200S	H.264, MJPEG	No	0/0	Yes	N/A	4.4 - 4.5	Works as designed
IPC-HDBW3101	H.264, MJPEG	Yes	1/0	Yes	N/A	4.4 - 4.5	Works as designed
IPC-HDBW3101-DI	H.264, MJPEG	Yes	1/0	Yes	N/A	4.4 - 4.5	Works as designed
IPC-HDBW3100	H.264, MJPEG	Yes	1/0	Yes	N/A	4.4 - 4.5	Works as designed
IPC-HDW3100	H.264, MJPEG	Yes	1/0	Yes	N/A	4.4 - 4.5	Works as designed
IPC-HDW2100	H.264, MJPEG	No	0/0	Yes	N/A	4.4 - 4.5	Works as designed
IPC-HDBW3110	H.264, MJPEG	Yes	2/0	Yes	N/A	4.4 - 4.5	Works as designed
<b>IPC with Motorized Lens</b>							
IPC-HFW3202C	H.264, MJPEG	Yes	2/0	Yes	Zoom	4.4 - 4.5	Tested & Certified
IPC-HDB3202	H.264, MJPEG	Yes	1/0	Yes	Zoom	4.4 - 4.5	Works as designed
IPC-HDB3202-DI	H.264, MJPEG	Yes	1/0	Yes	Zoom	4.4 - 4.5	Works as designed
IPC-HDBW3202	H.264, MJPEG	Yes	1/0	Yes	Zoom	4.4 - 4.5	Works as designed
IPC-HDBW3202-DI	H.264, MJPEG	Yes	1/0	Yes	Zoom	4.4 - 4.5	Works as designed
<b>Home-use IPC</b>							
IPC-K100	H.264, MJPEG	No	0/0	Yes	N/A	4.4 - 4.5	Works as designed
IPC-K100A	H.264, MJPEG	Yes	1/0	Yes	N/A	4.4 - 4.5	Works as designed
IPC-K100W	H.264, MJPEG	Yes	1/0	Yes	N/A	4.4 - 4.5	Tested & Certified
<b>PTZ</b>							
SD6583A-HN	H.264, MJPEG	Yes	7/0	Yes	Yes	4.4 - 4.5	Works as designed
SD6582A-HN	H.264, MJPEG	Yes	7/0	Yes	Yes	4.4 - 4.5	Tested & Certified
SD6582C-HN	H.264, MJPEG	Yes	7/0	Yes	Yes	4.4 - 4.5	Works as designed
SD3282D-GN	H.264, MJPEG	Yes	7/0	Yes	Yes	4.4 - 4.5	Works as designed
SD6580-HN	H.264, MJPEG	Yes	7/0	Yes	Yes	4.4 - 4.5	Works as designed
SD6580C-HN	H.264, MJPEG	Yes	7/0	Yes	Yes	4.4 - 4.5	Works as designed
SD6380D-HN	H.264, MJPEG	Yes	7/0	Yes	Yes	4.4 - 4.5	Works as designed
SD6983A-HN	H.264, MJPEG	Yes	7/0	Yes	Yes	4.4 - 4.5	Works as designed
SD6982C-HN	H.264, MJPEG	Yes	7/0	Yes	Yes	4.4 - 4.5	Works as designed
SD6982A-HN	H.264, MJPEG	Yes	7/0	Yes	Yes	4.4 - 4.5	Works as designed
SD6980C-HN	H.264, MJPEG	Yes	7/0	Yes	Yes	4.4 - 4.5	Works as designed
SD6980-HN	H.264, MJPEG	Yes	7/0	Yes	Yes	4.4 - 4.5	Works as designed
<b>Generic</b>							
All other models	Model Dependent**			Yes	Yes	4.4 - 4.5	Works as designed

Generic model is full featured and supports dual video streams, audio stream, PTZ, dry contact events, query device, Edge device motion detection and alarm out. For specific models, the handler dynamically queries the cameras for capabilities.

## FLIR

In this release the VideoEdge camera pack is fully integrated with FLIR's D, PT and F series, multi sensor, pan tilt and fixed thermal security cameras.

The following cameras are supported with minimum camera firmware version *nexus-server-GD\_v2.5.9.17*.

Supported FLIR cameras:

Model	CODEC Supported	Audio	I/O	VideoEdge Versions Supported	Certification
<b>Fixed Cameras</b>					
F-112	H.264, MJPEG, MPEG4	No	No	4.1 - 4.5	Works as designed
F-117	H.264, MJPEG, MPEG4	No	No	4.1 - 4.5	Works as designed
F-124	H.264, MJPEG, MPEG4	No	No	4.1 - 4.5	Works as designed
F-304	H.264, MJPEG, MPEG4	No	No	4.1 - 4.5	Works as designed
F-307	H.264, MJPEG, MPEG4	No	No	4.1 - 4.5	Works as designed
F-313	H.264, MJPEG, MPEG4	No	No	4.1 - 4.5	Works as designed
F-324	H.264, MJPEG, MPEG4	No	No	4.1 - 4.5	Tested & Certified
F-334	H.264, MJPEG, MPEG4	No	No	4.1 - 4.5	Works as designed
F-348	H.264, MJPEG, MPEG4	No	No	4.1 - 4.5	Works as designed
F-606	H.264, MJPEG, MPEG4	No	No	4.1 - 4.5	Works as designed
F-610	H.264, MJPEG, MPEG4	No	No	4.1 - 4.5	Works as designed
F-612	H.264, MJPEG, MPEG4	No	No	4.1 - 4.5	Works as designed
F-618	H.264, MJPEG, MPEG4	No	No	4.1 - 4.5	Works as designed
F-625	H.264, MJPEG, MPEG4	No	No	4.1 - 4.5	Works as designed
F-645	H.264, MJPEG, MPEG4	No	No	4.1 - 4.5	Works as designed
F-VIS	H.264, MJPEG, MPEG4	No	No	4.1 - 4.5	Works as designed
<b>Outdoor Dome Cameras</b>					
D-313	H.264, MJPEG, MPEG4	No	No	4.1 - 4.5	Works as designed
D-324	H.264, MJPEG, MPEG4	No	No	4.1 - 4.5	Tested & Certified
D-334	H.264, MJPEG, MPEG4	No	No	4.1 - 4.5	Works as designed
D-348	H.264, MJPEG, MPEG4	No	No	4.1 - 4.5	Works as designed
D-618	H.264, MJPEG, MPEG4	No	No	4.1 - 4.5	Works as designed
D-625	H.264, MJPEG, MPEG4	No	No	4.1 - 4.5	Works as designed
D-645	H.264, MJPEG, MPEG4	No	No	4.1 - 4.5	Works as designed
<b>Multi-Sensor Pan Tilt Cameras</b>					
PT-112	H.264, MJPEG, MPEG4	No	No	4.1 - 4.5	Works as designed
PT-117	H.264, MJPEG, MPEG4	No	No	4.1 - 4.5	Works as designed
PT-124	H.264, MJPEG, MPEG4	No	No	4.1 - 4.5	Works as designed
PT-304	H.264, MJPEG, MPEG4	No	No	4.1 - 4.5	Works as designed
PT-307	H.264, MJPEG, MPEG4	No	No	4.1 - 4.5	Works as designed
PT-313	H.264, MJPEG, MPEG4	No	No	4.1 - 4.5	Works as designed
PT-324	H.264, MJPEG, MPEG4	No	No	4.1 - 4.5	Tested & Certified

PT-334	H.264, MJPEG, MPEG4	No	No	4.1 - 4.5	Works as designed
PT-348	H.264, MJPEG, MPEG4	No	No	4.1 - 4.5	Works as designed
PT-606	H.264, MJPEG, MPEG4	No	No	4.1 - 4.5	Works as designed
PT-610	H.264, MJPEG, MPEG4	No	No	4.1 - 4.5	Works as designed
PT-612	H.264, MJPEG, MPEG4	No	No	4.1 - 4.5	Works as designed
PT-618	H.264, MJPEG, MPEG4	No	No	4.1 - 4.5	Works as designed
PT-625	H.264, MJPEG, MPEG4	No	No	4.1 - 4.5	Works as designed
PT-645	H.264, MJPEG, MPEG4	No	No	4.1 - 4.5	Works as designed
<b>Generic</b>					
All other models	N/A	N/A	N/A	N/A	N/A

## Panasonic Corp

VideoEdge camera handler is fully integrated with the Panasonic line of IP cameras. Panasonic, generally, doesn't change the core API interface for their cameras. VideoEdge camera handler is based on Panasonic core API package version 1.28, supporting both WV and DG versions of the listed cameras. As Panasonic continues to release new cameras there may be instances where specific Panasonic cameras are not listed in the available camera pack. A generic Panasonic camera handler is available for these cameras.

Supported Panasonic cameras and encoders:

Model	CODEC Supported	Audio	I/O	VideoEdge Versions Supported	Certification
<b>Encoders</b>					
GXE500	H.264, MJPEG, MPEG4	Yes	3/0	4.3 - 4.5	Tested & Certified
<b>Fixed Dome Cameras</b>					
NW484	MJPEG, MPEG4	No	1/0	4.0.1 - 4.5	Tested & Certified
NW484S	MJPEG, MPEG4	No	1/0	4.0.1 - 4.5	Works as designed
NW502S	H.264, MJPEG, MPEG4	Yes	3/0	4.0.1 - 4.5	Works as designed
SF332	H.264, MJPEG, MPEG4	Yes	1/0	4.0.1 - 4.5	Works as designed
SF335	H.264, MJPEG, MPEG4	Yes	1/0	4.0.1 - 4.5	Tested & Certified
SF336	H.264, MJPEG, MPEG4	Yes	1/0	4.0.1 - 4.5	Tested & Certified
SF342	H.264, MJPEG, MPEG4	Yes	1/0	4.0.1 - 4.5	Works as designed
SF346	H.264, MJPEG, MPEG4	Yes	1/0	4.0.1 - 4.5	Works as designed
SW352	H.264, MJPEG, MPEG4	Yes	1/0	4.1 - 4.5	Works as designed
SW355	H.264, MJPEG, MPEG4	Yes	1/0	4.0.1 - 4.5	Works as designed
NF284	MJPEG, MPEG4	Yes	1/0	4.1 - 4.5	Tested & Certified
NF302	MJPEG, MPEG4	Yes	1/0	4.1 - 4.5	Tested & Certified
SP508	H.264, MJPEG	No	3/0	4.3 - 4.5	Works as designed
SF538	H.264, MJPEG	No	3/0	4.3 - 4.5	Works as designed
SF548	H.264, MJPEG	No	3/0	4.3 - 4.5	Works as designed
SW558	H.264, MJPEG	No	3/0	4.3 - 4.5	Works as designed
SP509	H.264, MJPEG	Yes	3/0	4.3 - 4.5	Works as designed
SF539	H.264, MJPEG	Yes	3/0	4.3 - 4.5	Works as designed

SF549	H.264, MJPEG	Yes	3/0	4.3 - 4.5	Works as designed
SW559	H.264, MJPEG	Yes	3/0	4.3 - 4.5	Tested & Certified
SW152	H.264, MJPEG	No	No	4.3 - 4.5	Tested & Certified
SW155	H.264, MJPEG	No	No	4.3 - 4.5	Works as designed
SF132	H.264, MJPEG	No	No	4.3 - 4.5	Works as designed
SF135	H.264, MJPEG	No	No	4.3 - 4.5	Works as designed
<b>PTZ Dome Cameras</b>					
NW960	MJPEG, MPEG4	Yes	3/0	4.0.1 - 4.5	Works as designed
NW964	MJPEG, MPEG4	Yes	3/0	4.0.1 - 4.5	Tested & Certified
NS950	MJPEG, MPEG4	Yes	3/0	4.0.1 - 4.5	Tested & Certified
NS954	MJPEG, MPEG4	Yes	3/0	4.0.1 - 4.5	Works as designed
NS202	MJPEG, MPEG4	Yes	1/0	4.0.1 - 4.5	Works as designed
NS202A	MJPEG, MPEG4	Yes	1/0	4.0.1 - 4.5	Tested & Certified
SC384	H.264, MJPEG, MPEG4	Yes	3/0	4.1 - 4.5	Works as designed
SC385	H.264, MJPEG, MPEG4	Yes	3/0	4.0.1 - 4.5	Tested & Certified
SC395	H.264, MJPEG, MPEG4	Yes	3/0	4.0.1 - 4.5	Works as designed
SC386	H.264, MJPEG, MPEG4	Yes	3/0	4.3 - 4.5	Tested & Certified
SC396	H.264, MJPEG	Yes	3/0	4.3 - 4.5	Works as designed
ST162	H.264, MJPEG	Yes	1/0	4.3 - 4.5	Works as designed
ST165	H.264, MJPEG	Yes	1/0	4.3 - 4.5	Tested & Certified
SW172	H.264, MJPEG	Yes	1/0	4.3 - 4.5	Works as designed
SW174W	H.264, MJPEG	Yes	1/0	4.3 - 4.5	Works as designed
SW175	H.264, MJPEG	Yes	1/0	4.3 - 4.5	Works as designed
<b>Fixed Cameras</b>					
NP244	MJPEG, MPEG4	Yes	1/0	4.0.1 - 4.5	Tested & Certified
NP304	MJPEG, MPEG4	Yes	1/0	4.0.1 - 4.5	Tested & Certified
NP502	H.264, MJPEG, MPEG4	Yes	3/0	4.0.1 - 4.5	Tested & Certified
SP102	H.264, MJPEG	No	No	4.0.1 - 4.5	Tested & Certified
SP105	H.264, MJPEG	No	No	4.0.1 - 4.5	Tested & Certified
SP302	H.264, MJPEG, MPEG4	Yes	1/0	4.1 - 4.5	Works as designed
SP305	H.264, MJPEG, MPEG4	Yes	1/0	4.0.1 - 4.5	Tested & Certified
SP306	H.264, MJPEG, MPEG4	Yes	1/0	4.0.1 - 4.5	Tested & Certified
SP304	H.264, MJPEG, MPEG4	Yes	1/0	4.3, 4.5	Works as designed
SF334	H.264, MJPEG, MPEG4	Yes	1.0	4.3, 4.5	Works as designed
SW314	H.264, MJPEG, MPEG4	No	1/0	4.3, 4.5	Works as designed
SW316	H.264, MJPEG, MPEG4	Yes	1/0	4.3, 4.5	Works as designed
SW316L	H.264, MJPEG, MPEG4	Yes	1/0	4.3, 4.5	Tested & Certified
<b>Generic</b>					
All other models	Single Stream (H.264, MJPEG, MPEG4)	DPC*	DPC*	4.3, 4.5	Works as designed

\* DPC - depends on camera capability

**Pelco**

This VideoEdge camera handler is fully integrated with the Pelco line of IP cameras. Pelco, generally, doesn't change the core API interface for their cameras. This VideoEdge camera handler is based on the Pelco API released on July 31, 2013. As Pelco continue to release new cameras there may be instances where specific Pelco cameras are not listed in these release notes.

Pelco camera handler will get the camera capability dynamically when the specific camera is being added to NVR, and determine whether the specific camera is supported or not. If the camera is supported, it will be added to NVR successfully.

Supported Pelco cameras:

Model Series	CODEC Supported	Audio	I/O	PTZ Supported	Edge Based Motion Detection Supported	Edge Based Motion Meta data Supported	VideoEdge Versions Supported	Certification
<b>Box</b>								
IL10	H.264	No	DPC*	No	No	No	4.4 - 4.5	Works as designed
IXS0	H.264, MJPEG, MPEG4	Yes	DPC*	No	Yes	No	4.4 - 4.5	Works as designed
IXES1 (Enh)	H.264, MJPEG, MPEG4	Yes	DPC*	No	Yes	No	4.4 - 4.5	Works as designed
IX10	H.264, MJPEG	No	DPC*	No	Yes	No	4.4 - 4.5	Works as designed
IXE10	H.264, MJPEG	No	DPC*	No	Yes	No	4.4 - 4.5	Works as designed
IXE11 (Enh)	H.264, MJPEG, MPEG4	Yes	DPC*	No	Yes	No	4.4 - 4.5	Works as designed
IXE20	H.264, MJPEG	No	DPC*	No	Yes	No	4.4 - 4.5	Works as designed
IXE21 (Enh)	H.264, MJPEG, MPEG4	Yes	DPC*	No	Yes	No	4.4 - 4.5	Works as designed
IX30	H.264, MJPEG	No	DPC*	No	Yes	No	4.4 - 4.5	Works as designed
IXE31 (Enh)	H.264, MJPEG, MPEG4	Yes	DPC*	No	Yes	No	4.4 - 4.5	Works as designed
IXP	H.264, MJPEG	Yes	DPC*	No	Yes	No	4.4 - 4.5	Works as designed
<b>Bullet</b>								
IBP Series	H.264, MJPEG	DPC*	DPC*	No	Yes	No	4.4 - 4.5	Works as designed
<b>Dome</b>								
IDS0	H.264, MJPEG	DPC*	DPC*	No	Yes	No	4.4 - 4.5	Works as designed
ID10	H.264, MJPEG	DPC*	DPC*	No	Yes	No	4.4 - 4.5	Works as designed



IDE10	H.264, MJPEG	DPC*	DPC*	No	Yes	No	4.4 - 4.5	Works as designed
IDE20	H.264, MJPEG	DPC*	DPC*	No	Yes	No	4.4 - 4.5	Works as designed
IDE20-P	H.264, MJPEG	DPC*	DPC*	No	Yes	No	4.4 - 4.5	Works as designed
IDE20-OV	H.264, MJPEG	DPC*	DPC*	No	Yes	No	4.4 - 4.5	Works as designed
ID30	H.264, MJPEG	DPC*	DPC*	No	Yes	No	4.4 - 4.5	Works as designed
<b>Ruggedized</b>								
IES0	H.264, MJPEG, MPEG4	Yes	DPC*	No	Yes	No	4.4 - 4.5	Works as designed
IE10	H.264, MJPEG	Yes	DPC*	No	Yes	No	4.4 - 4.5	Works as designed
IE30	H.264, MJPEG	Yes	DPC*	No	Yes	No	4.4 - 4.5	Works as designed
IEE10	H.264, MJPEG	Yes	DPC*	No	Yes	No	4.4 - 4.5	Works as designed
IEE20	H.264, MJPEG	Yes	DPC*	No	Yes	No	4.4 - 4.5	Works as designed
IEE20-P	H.264, MJPEG	Yes	DPC*	No	Yes	No	4.4 - 4.5	Works as designed
IEE20-OV	H.264, MJPEG	Yes	DPC*	No	Yes	No	4.4 - 4.5	Works as designed
<b>Mini</b>								
IMS0	H.264, MJPEG, MPEG4	Yes	DPC*	No	Yes	No	4.4 - 4.5	Works as designed
IMES1 (Enh)	H.264, MJPEG	Yes	DPC*	No	Yes	No	4.4 - 4.5	Works as designed
IM10	H.264, MJPEG	Yes	DPC*	No	Yes	No	4.4 - 4.5	Works as designed
IME11 (Enh)	H.264, MJPEG	Yes	DPC*	No	Yes	No	4.4 - 4.5	Works as designed
IME21 (Enh)	H.264, MJPEG	Yes	DPC*	No	Yes	No	4.4 - 4.5	Works as designed
IME31 (Enh)	H.264, MJPEG	Yes	DPC*	No	Yes	No	4.4 - 4.5	Works as designed
IMP	H.264, MJPEG	Yes	DPC*	No	Yes	No	4.4 - 4.5	Works as designed
<b>PTZ</b>								
Spectra H.264	H.264, MJPEG	Yes	DPC*	Yes	No	No	4.4 - 4.5	Works as designed
Spectra HD 720P	H.264, MJPEG	DPC*	DPC*	Yes	No	No	4.4 - 4.5	Works as designed
Spectra HD 1080P 20X	H.264, MJPEG	DPC*	DPC*	Yes	No	No	4.4 - 4.5	Works as designed



Spectra HD 1080P 30X	H.264, MJPEG	DPC*	DPC*	Yes	No	No	4.4 - 4.5	Works as designed
Excite IP	H.264, MJPEG	No	DPC*	Yes	No	No	4.4 - 4.5	Works as designed
<b>Integrated PTZ</b>								
Esprit SE IP	H.264, MJPEG	No	DPC*	Yes	No	No	4.4 - 4.5	Works as designed
<b>Thermal</b>								
TI3	H.264, MJPEG	Yes	DPC*	No	Yes	No	4.4 - 4.5	Works as designed
TI6	H.264, MJPEG	Yes	DPC*	No	Yes	No	4.4 - 4.5	Works as designed
Esprit TI3	H.264, MJPEG	Yes	DPC*	No	Yes	No	4.4 - 4.5	Works as designed
Esprit TI6	H.264, MJPEG	Yes	DPC*	No	Yes	No	4.4 - 4.5	Works as designed
<b>Encoder</b>								
NET5401T	H.264, MJPEG	No	1/0	Yes	No	No	4.4 - 4.5	Works as designed
NET5402T	H.264, MJPEG	No	DPC	Yes	No	No	4.4 - 4.5	Works as designed
NET5404T	H.264, MJPEG	No	DPC	Yes	No	No	4.4 - 4.5	Works as designed

\*DPC - depends on camera capability

You can also find the information of supported Pelco camera series from below link:

<http://pdn.pelco.com/content/pelco-api-web-services-supported-pelco-products>

**Note –**

Some of the cameras with MPEG-4 format are not supported by Pelco handler though they may appear in the above Pelco developers' network link. For example, camera model series like IP3701 and encoder models like NET5301T are not supported because both of these device types don't support dynamic query of device capability.

## Samsung

VideoEdge camera handler is fully integrated with the Samsung communications line of IP cameras. The VideoEdge NVR is fully integrated with the cameras (with Samsung API TYPE1 and TYPE2 version 2.7.4). As Samsung continues to release new cameras to the market, the VideoEdge camera handler provides a generic Samsung camera driver that can connect to (compatible with Samsung API version 2.7.4) cameras.

Supported Samsung Cameras and Encoders:

Model	CODEC Supported	Audio	I/O	Edge Based Motion Detection Supported	PTZ Supported	VideoEdge Versions Supported	Certification
<b>Encoders</b>							

SPE-100	H.264, MJPEG, MPEG4	Yes	1/0	Yes	Yes	4.2.1 - 4.5	Works as designed
SPE-400	H.264, MJPEG, MPEG4	Yes	4/0	Yes	Yes	4.2.1 - 4.5	Tested & Certified
SPE-400B	H.264, MJPEG, MPEG4	No	0/0	Yes	Yes	4.4 - 4.5	Works as designed
SPE-101	H.264, MJPEG, MPEG4	No	0/0	Yes	Yes	4.4 - 4.5	Works as designed
SPE-1600	H.264, MJPEG, MPEG4	No	0/0	Yes	Yes	4.4 - 4.5	Works as designed
<b>Box Series Cameras</b>							
SNZ-5200	H.264, MJPEG, MPEG4	Yes	1/0	Yes	N/A	4.2.1 - 4.5	Tested & Certified
SNB-2000	H.264, MJPEG, MPEG4	Yes	2/0	Yes	N/A	4.2.1 - 4.5	Works as designed
SNB-3000	H.264, MJPEG, MPEG4	Yes	2/0	Yes	N/A	4.2.1 - 4.5	Works as designed
SNB-3002	H.264, MJPEG, MPEG4	Yes	1/0	Yes	N/A	4.2.1 - 4.5	Tested & Certified
SNB-5000	H.264, MJPEG, MPEG4	Yes	1/0	Yes	N/A	4.2.1 - 4.5	Works as designed
SNB-7000	H.264, MJPEG, MPEG4	Yes	1/0	Yes	N/A	4.2.1 - 4.5	Works as designed
SNB-5000A	H.264, MJPEG, MPEG4	Yes	1/0	Yes	N/A	4.4 - 4.5	Works as designed
SNB-5001	H.264, MJPEG	No	1/0	Yes	N/A	4.4 - 4.5	Works as designed
SNB-7001	H.264, MJPEG	No	1/0	Yes	N/A	4.4 - 4.5	Works as designed
SNB-7002	H.264, MJPEG	Yes	1/0	Yes	N/A	4.4 - 4.5	Works as designed
SNB-6004	H.264, MJPEG, MPEG4	Yes	1/0	Yes	N/A	4.4 - 4.5	Tested & Certified
SNB-6003	H.264, MJPEG, MPEG4	Yes	1/0	Yes	N/A	4.4 - 4.5	Works as designed
<b>Bullet Series Cameras</b>							
SNO-5080R	H.264, MJPEG, MPEG4	No	1/0	Yes	N/A	4.2.1 - 4.5	Works as designed
SNO-7080R	H.264, MJPEG	Yes	1/0	Yes	N/A	4.4 - 4.5	Works as designed
SNO-7082R	H.264, MJPEG, MPEG4	Yes	1/0	Yes	N/A	4.4 - 4.5	Works as designed
SNO-6084R	H.264, MJPEG, MPEG4	Yes	1/0	Yes	N/A	4.4 - 4.5	Works as designed
<b>Fixed Dome Series Cameras</b>							
SNV-5010	H.264, MJPEG	No	No	Yes	N/A	4.2.1 - 4.5	Tested & Certified
SNV-3080	H.264, MJPEG, MPEG4	No	2/0	Yes	N/A	4.2.1 - 4.5	Works as designed
SNV-3120	H.264, MJPEG, MPEG4	Yes	1/0	No	N/A	4.2.1 - 4.5	Works as designed
SNV-5080	H.264, MJPEG, MPEG4	Yes	1/0	Yes	N/A	4.2.1 - 4.5	Works as designed

SNV-5080R	H.264, MJPEG, MPEG4	Yes	1/0	Yes	N/A	4.2.1 - 4.5	Works as designed
SNV-7080	H.264, MJPEG, MPEG4	Yes	1/0	Yes	N/A	4.2.1 - 4.5	Works as designed
SNV-7080R	H.264, MJPEG, MPEG4	Yes	1/0	Yes	N/A	4.2.1 - 4.5	Works as designed
SND-3080	H.264, MJPEG, MPEG4	No	2/0	Yes	N/A	4.2.1 - 4.5	Tested & Certified
SND-3082	H.264, MJPEG, MPEG4	Yes	1/0	Yes	N/A	4.2.1 - 4.5	Works as designed
SND-3080F	H.264, MJPEG, MPEG4	No	2/0	Yes	N/A	4.2.1 - 4.5	Works as designed
SND-3080C	H.264, MJPEG, MPEG4	No	2/0	Yes	N/A	4.2.1 - 4.5	Works as designed
SND-3080CF	H.264, MJPEG, MPEG4	No	2/0	Yes	N/A	4.2.1 - 4.5	Works as designed
SND-5080	H.264, MJPEG, MPEG4	Yes	1/0	Yes	N/A	4.2.1 - 4.5	Tested & Certified
SND-5080F	H.264, MJPEG, MPEG4	Yes	1/0	Yes	N/A	4.2.1 - 4.5	Works as designed
SND-7080	H.264, MJPEG, MPEG4	Yes	1/0	Yes	N/A	4.2.1 - 4.5	Tested & Certified
SND-7080F	H.264, MJPEG, MPEG4	Yes	1/0	Yes	N/A	4.2.1 - 4.5	Works as designed
SND-1080	H.264, MJPEG, MPEG4	Yes	1/0	Yes	N/A	4.4 - 4.5	Works as designed
SND-3082F	H.264, MJPEG, MPEG4	Yes	1/0	Yes	N/A	4.4 - 4.5	Works as designed
SND-5011	H.264, MJPEG	No	1/0	Yes	N/A	4.4 - 4.5	Works as designed
SND-5061	H.264, MJPEG	No	1/0	Yes	N/A	4.4 - 4.5	Works as designed
SND-7011	H.264, MJPEG	No	1/0	Yes	N/A	4.4 - 4.5	Tested & Certified
SND-7061	H.264, MJPEG	No	1/0	Yes	N/A	4.4 - 4.5	Works as designed
SND-7082	H.264, MJPEG	Yes	1/0	Yes	N/A	4.4 - 4.5	Works as designed
SND-7082F	H.264, MJPEG	Yes	1/0	Yes	N/A	4.4 - 4.5	Works as designed
SND-6084	H.264, MJPEG, MPEG4	Yes	1/0	Yes	N/A	4.4 - 4.5	Works as designed
SND-6083	H.264, MJPEG, MPEG4	Yes	1/0	Yes	N/A	4.4 - 4.5	Works as designed
SND-6084R	H.264, MJPEG, MPEG4	Yes	1/0	Yes	N/A	4.4 - 4.5	Works as designed
SND-3082	H.264, MJPEG, MPEG4	Yes	1/0	Yes	N/A	4.4 - 4.5	Works as designed
SND-7082	H.264, MJPEG, MPEG4	Yes	1/0	Yes	N/A	4.4 - 4.5	Works as designed
SND-6084R	H.264, MJPEG, MPEG4	Yes	1/0	Yes	N/A	4.4 - 4.5	Works as designed
<b>PTZ Series Cameras</b>							

SNP-3120	H.264, MJPEG, MPEG4	Yes	2/0	No	Yes	4.2.1 - 4.5	Tested & Certified
SNP-3120V	H.264, MJPEG, MPEG4	No	0/0	No	Yes	4.2.1 - 4.5	Works as designed
SNP-3120VH	H.264, MJPEG, MPEG4	No	0/0	No	Yes	4.2.1 - 4.5	Works as designed
SNP-3371	H.264, MJPEG, MPEG4	Yes	4/0	Yes	Yes	4.2.1 - 4.5	Tested & Certified
SNP-3302	H.264, MJPEG, MPEG4	No	4/0	Yes	Yes	4.2.1 - 4.5	Works as designed
SNP-3302H	H.264, MJPEG, MPEG4	Yes	4/0	Yes	Yes	4.2.1 - 4.5	Works as designed
SNP-3371TH	H.264, MJPEG, MPEG4	Yes	4/0	Yes	Yes	4.2.1 - 4.5	Works as designed
SNP-5200	H.264, MJPEG, MPEG4	Yes	4/0	Yes	Yes	4.2.1 - 4.5	Tested & Certified
SNP-5200H	H.264, MJPEG, MPEG4	No	0/0	Yes	Yes	4.2.1 - 4.5	Works as designed
SNP-3430H	H.264, MJPEG, MPEG4	Yes	0/0	Yes	Yes	4.2.1 - 4.5	Works as designed
SNP-3371H	H.264, MJPEG, MPEG4	Yes	4/0	Yes	Yes	4.4 - 4.5	Works as designed
SNP-6200	H.624, MJPEG	Yes	4/0	Yes	Yes	4.4 - 4.5	Tested & Certified
SNP-6200H	H.624, MJPEG	No	0/0	Yes	Yes	4.4 - 4.5	Works as designed
SNP-5300	H.624, MJPEG	No	0/0	Yes	Yes	4.4 - 4.5	Tested & Certified
SNP-5300H	H.624, MJPEG	Yes	4/0	Yes	Yes	4.4 - 4.5	Works as designed
<b>Generic</b>							
All other models	Model dependent*	Yes*	Yes*	Yes	Yes*	4.2.1 - 4.5	Works as designed

\* Generic model is full featured which support dual video streams, audio stream, PTZ, dry contact events, query device, Edge device motion detection, alarm out. For specific model, handler dynamic query capabilities from camera.

## SONY

This version of VideoEdge camera handler provides full integration with the SONY line of Video Encoders and IP cameras. SONY has number of API's (Application Programming Interface) camera handlers to communicate with their cameras. The VideoEdge NVR is fully integrated with SONY's 3<sup>rd</sup>, 4<sup>th</sup>, and 5<sup>th</sup> generations of IP cameras. As SONY continues to release new cameras there can be instances where specific SONY cameras are not listed in the camera pack camera- list. A generic SONY camera handler is available in these instances.

Supported SONY cameras and encoders:

Model	CODEC Supported	Audio	I/O	VideoEdge Versions Supported	Certification
<b>Encoders</b>					

SNT-EX 101	H.264, MJPEG, MPEG4	Yes	2/0	4.0.1 - 4.5	Works as designed
SNT-EX 101E	H.264, MJPEG, MPEG4	Yes	2/0	4.0.1 - 4.5	Works as designed
SNT-EX 104	H.264, MJPEG, MPEG4	Yes	4/0	4.0.1 - 4.5	Tested & Certified
SNT-EP 104	H.264, MJPEG, MPEG4	Yes	No	4.0.1 - 4.5	Works as designed
SNT-EP 154	H.264, MJPEG, MPEG4	No	No	4.0.1 - 4.5	Tested & Certified
SNT-EX 154	H.264, MJPEG, MPEG4	Yes	4/0	4.0.1 - 4.5	Tested & Certified
<b>Fixed Cameras</b>					
SNC-CS20	MJPEG, MPEG4	Yes	1/0	4.0.1 - 4.5	Works as designed
SNC-CH160	H.264, MJPEG, MPEG4	No	No	4.0.1 - 4.5	Tested & Certified
SNC-CH140	H.264, MJPEG, MPEG4	Yes	1/0	4.0.1 - 4.5	Works as designed
SNC-CH240	H.264, MJPEG, MPEG4	Yes	1/0	4.0.1 - 4.5	Tested & Certified
SNC-CH180	H.264, MJPEG, MPEG4	Yes	1/0	4.0.1 - 4.5	Works as designed
SNC-CH280	H.264, MJPEG, MPEG4	Yes	No	4.0.1 - 4.5	Works as designed
SNC-CH120	H.264, MJPEG, MPEG4	No	No	4.0.1 - 4.5	Works as designed
SNC-CH220	H.264, MJPEG, MPEG4	No	No	4.0.1 - 4.5	Works as designed
SNC-CH260	H.264, MJPEG, MPEG4	No	No	4.0.1 - 4.5	Works as designed
SNC-CM120	MJPEG, MPEG4	Yes	1/0	4.0.1 - 4.5	Works as designed
SNC-CS50N	H.264, MJPEG, MPEG4	Yes	1/0	4.0.1 - 4.5	Tested & Certified
SNC-CS50P	H.264, MJPEG, MPEG4	Yes	1/0	4.0.1 - 4.5	Works as designed
SNC-CH110	H.264, MJPEG, MPEG4	No	No	4.0.1 - 4.5	Tested & Certified
SNC-CH210	H.264, MJPEG, MPEG4	No	No	4.0.1 - 4.5	Works as designed
SNC-EB520	H.264, MJPEG, MPEG4	No	1/1	4.3 - 4.5	Tested & Certified
SNC-EM520	H.264, MJPEG, MPEG4	No	0/0	4.3 - 4.5	Works as designed
SNC-EM521	H.264, MJPEG, MPEG4	No	0/0	4.3 - 4.5	Works as designed
<b>Mini Dome Cameras</b>					
SNC-DH140	H.264, MJPEG, MPEG4	Yes	1/0	4.0.1 - 4.5	Works as designed
SNC-DH140T	H.264, MJPEG, MPEG4	Yes	1/0	4.0.1 - 4.5	Works as designed
SNC-DH240	H.264, MJPEG, MPEG4	Yes	1/0	4.0.1 - 4.5	Works as designed
SNC-DH240T	H.264, MJPEG, MPEG4	Yes	1/0	4.0.1 - 4.5	Works as designed
SNC-DH280	H.264, MJPEG, MPEG4	Yes	No	4.0.1 - 4.5	Works as designed
SNC-DH120	H.264, MJPEG, MPEG4	No	No	4.0.1 - 4.5	Works as designed
SNC-DH120T	H.264, MJPEG, MPEG4	No	No	4.0.1 - 4.5	Works as designed
SNC-DH220T	H.264, MJPEG, MPEG4	No	No	4.0.1 - 4.5	Works as designed
SNC-DH160	H.264, MJPEG, MPEG4	No	No	4.0.1 - 4.5	Works as designed
SNC-DH260	H.264, MJPEG, MPEG4	No	No	4.0.1 - 4.5	Works as designed
SNC-DS10	MJPEG, MPEG4	Yes	1/0	4.0.1 - 4.5	Works as designed
SNC-DS60	MJPEG, MPEG4	Yes	1/0	4.0.1 - 4.5	Works as designed
SNC-DM110	MJPEG, MPEG4	Yes	1/0	4.0.1 - 4.5	Works as designed
SNC-DM160	MJPEG, MPEG4	Yes	1/0	4.0.1 - 4.5	Works as designed
SNC-DF50N	H.264, MJPEG, MPEG4	Yes	1/0	4.0.1 - 4.5	Works as designed
SNC-DF50P	H.264, MJPEG, MPEG4	Yes	1/0	4.0.1 - 4.5	Works as designed
SNC-DF80N	H.264, MJPEG, MPEG4	Yes	1/0	4.0.1 - 4.5	Works as designed
SNC-DF80P	H.264, MJPEG, MPEG4	Yes	1/0	4.0.1 - 4.5	Works as designed
SNC-DF85N	H.264, MJPEG, MPEG4	Yes	1/0	4.0.1 - 4.5	Works as designed
SNCDF85P	H.264, MJPEG, MPEG4	Yes	1/0	4.0.1 - 4.5	Works as designed
SNC-DH220	H.264, MJPEG, MPEG4	No	No	4.0.1 - 4.5	Tested & Certified

SNC-DH110	H.264, MJPEG, MPEG4	No	No	4.0.1 - 4.5	Works as designed
SNC-DH110T	H.264, MJPEG, MPEG4	No	No	4.0.1 - 4.5	Works as designed
SNC-DH210	H.264, MJPEG, MPEG4	No	No	4.0.1 - 4.5	Tested & Certified
SNC-DH210T	H.264, MJPEG, MPEG4	No	No	4.0.1 - 4.5	Works as designed
SNC-DH180	H.264, MJPEG, MPEG4	Yes	1/0	4.0.1 - 4.5	Tested & Certified
<b>PTZ Dome</b>					
SNC-RS44N	H.264, MJPEG, MPEG4	Yes	4/0	4.0.1 - 4.5	Works as designed
SNC-RS44P	H.264, MJPEG, MPEG4	Yes	4/0	4.0.1 - 4.5	Works as designed
SNC-RS84N	H.264, MJPEG, MPEG4	Yes	4/0	4.0.1 - 4.5	Works as designed
SNC-RS84P	H.264, MJPEG, MPEG4	Yes	4/0	4.0.1 - 4.5	Works as designed
SNC-RS86N	H.264, MJPEG, MPEG4	Yes	4/0	4.0.1 - 4.5	Works as designed
SNC-RS86P	H.264, MJPEG, MPEG4	Yes	4/0	4.0.1 - 4.5	Works as designed
SNC-RH124	H.264, MJPEG, MPEG4	Yes	4/0	4.0.1 - 4.5	Tested & Certified
SNC-RH164	H.264, MJPEG, MPEG4	Yes	4/0	4.0.1 - 4.5	Works as designed
SNC-RX530N	H.264, MJPEG, MPEG4	Yes	2/0	4.0.1 - 4.5	Works as designed
SNC-RX530P	H.264, MJPEG, MPEG4	Yes	2/0	4.0.1 - 4.5	Works as designed
SNC-RX550N	H.264, MJPEG, MPEG4	Yes	2/0	4.0.1 - 4.5	Works as designed
SNC-RX550P	H.264, MJPEG, MPEG4	Yes	2/0	4.0.1 - 4.5	Works as designed
SNC-RX570N	H.264, MJPEG, MPEG4	Yes	2/0	4.0.1 - 4.5	Works as designed
SNC-RX570P	H.264, MJPEG, MPEG4	Yes	2/0	4.0.1 - 4.5	Works as designed
SNC-EP550	H.264, MJPEG, MPEG4	Yes	2/1	4.3 - 4.5	Works as designed
SNC-EP580	H.264, MJPEG, MPEG4	Yes	2/1	4.3 - 4.5	Tested & Certified
SNC-ER250/ER521	H.264, MJPEG, MPEG4	Yes	2/1	4.3 - 4.5	Tested & Certified
SNC-EP520/EP521	H.264, MJPEG, MPEG4	Yes	2/1	4.3 - 4.5	Works as designed
SNC-ER550	H.264, MJPEG, MPEG4	Yes	2/1	4.3 - 4.5	Works as designed
SNC-ER580	H.264, MJPEG, MPEG4	Yes	2/1	4.3 - 4.5	Works as designed
<b>Generic</b>					
All other models	Dual Stream (H.262, MJPEG, MPEG4)	No	No	4.3 - 4.5	Works as designed

## Vivotek Corp.

VideoEdge camera handler is fully integrated with the Vivotek line of IP cameras. Vivotek generally doesn't change the core API interface for their cameras. VideoEdge camera handler is based on Vivotek API "URL Command Document for All Series Version 1.4a", supporting all the listed cameras. As Vivotek continues to release new cameras, there may be instances where specific Vivotek cameras are not listed in the supported camera list. A generic Vivotek camera handler is available for these cameras.

Supported Vivotek Cameras and Encoders:

Model	CODEC Supported	Audio	I/O	VideoEdge Versions Supported	Certification
<b>Encoders</b>					
VS8801	H.264, MPEG4, MJPEG	Yes	8/0	4.3 - 4.5	Tested & Certified
<b>Fixed IP Cameras</b>					
FD8136	H.264, MPEG4, MJPEG	Yes	1/0	4.3 - 4.5	Works as designed

FD8135H	H.264, MPEG4, MJPEG	Yes	3/0	4.3 - 4.5	Tested & Certified
FD8335H	H.264, MPEG4, MJPEG	Yes	3/0	4.3 - 4.5	Works as designed
FE8171	H.264, MJPEG	Yes	1/0	4.3 - 4.5	Tested & Certified
FE8171V	H.264, MJPEG	Yes	1/0	4.3 - 4.5	Works as designed
FE8172	H.264, MJPEG	Yes	1/0	4.3 - 4.5	Tested & Certified
FE8172V	H.264, MJPEG	Yes	1/0	4.3 - 4.5	Works as designed
SF8172	H.264, MJPEG	Yes	1/0	4.3 - 4.5	Works as designed
SF8172V	H.264, MJPEG	Yes	1/0	4.3 - 4.5	Works as designed
AF5127	H.264, MJPEG	Yes	1/0	4.3 - 4.5	Works as designed
AF5127V	H.264, MJPEG	Yes	1/0	4.3 - 4.5	Works as designed
IP8362	H.264, MPEG4, MJPEG	Yes	1/0	4.3 - 4.5	Tested & Certified
<b>PTZ Cameras</b>					
SD8313E	H.264, MPEG4, MJPEG	Yes	3/0	4.3 - 4.5	Tested & Certified
SD8323E	H.264, MPEG4, MJPEG	Yes	3/0	4.3 - 4.5	Works as designed
SD8312E	H.264, MPEG4, MJPEG	Yes	3/0	4.3 - 4.5	Works as designed
SD8322E	H.264, MPEG4, MJPEG	Yes	3/0	4.3 - 4.5	Works as designed
SD8311E	H.264, MPEG4, MJPEG	Yes	3/0	4.3 - 4.5	Works as designed
SD8321E	H.264, MPEG4, MJPEG	Yes	3/0	4.3 - 4.5	Works as designed
SD8362E	H.264, MPEG4, MJPEG	Yes	3/0	4.3 - 4.5	Works as designed
PZ8111	H.264, MPEG4, MJPEG	Yes	1/0	4.3 - 4.5	Tested & Certified
PZ8121	H.264, MPEG4, MJPEG	Yes	1/0	4.3 - 4.5	Tested & Certified
PZ8111W	H.264, MPEG4, MJPEG	Yes	1/0	4.3 - 4.5	Works as designed
PZ8121W	H.264, MPEG4, MJPEG	Yes	1/0	4.3 - 4.5	Works as designed
<b>Generic</b>					
All other models	Model Dependant			4.3 - 4.5	Generic Reduced Functionality

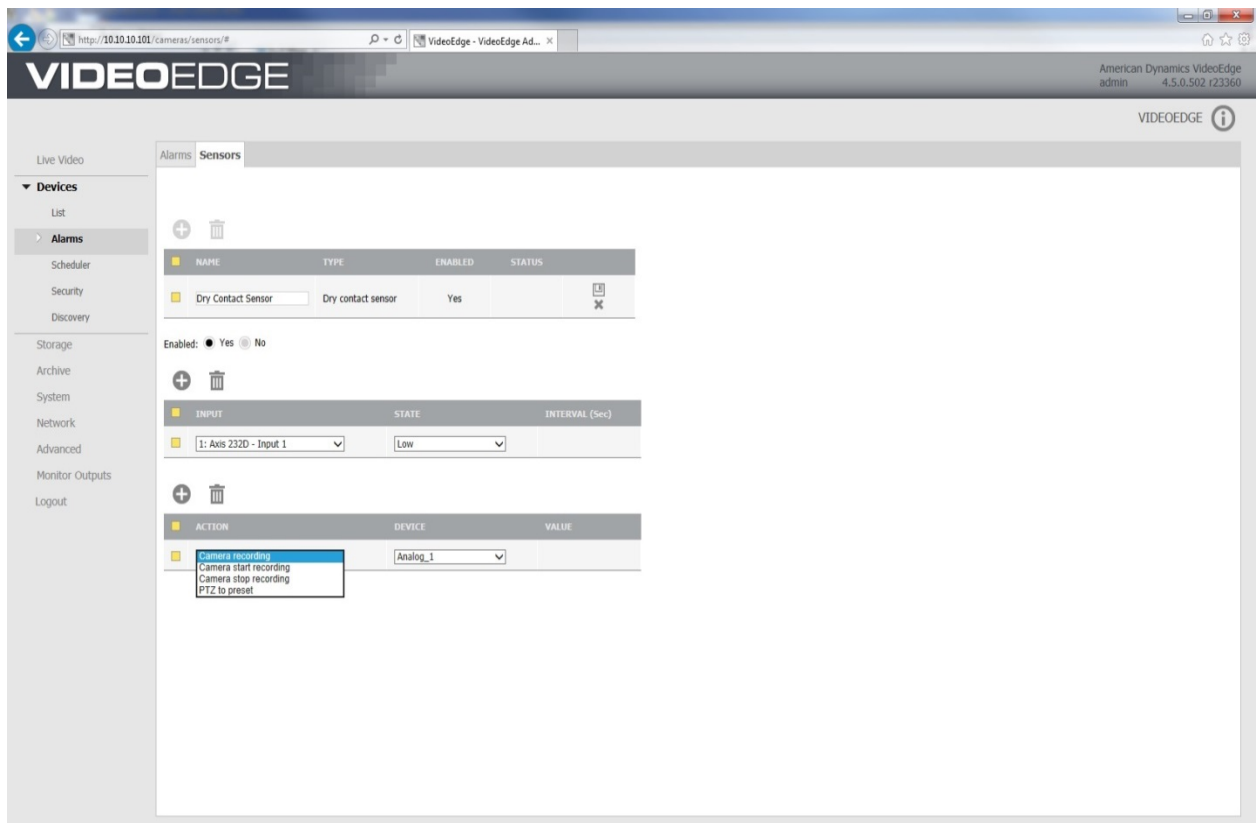
## Appendix A

### Dry contact Alarm Recording

With this patch release, the ability now exists to record the duration of a dry contact while active.

In the NVR Admin Web GUI, on the Devices→Alarms→Sensors Page when defining an action, two new options have been added to the Action dropdown options:

- Camera Recording
- Camera Start Recording ←New
- Camera Stop Recording ←New
- PTZ to Preset



### Camera Recording

The Sensor will only be triggered by the selected Input State from the section above. If the Recording Mode is set to Record-Only-On-Alarm (orange triangle), recording will begin and will include only the following:



*Alarm Pre Buffer + selected Sensor Input State trigger time + Alarm Post Buffer.*

After the configured Alarm Post Buffer, recording will turn off.

### **Camera Start Recording**

Similar to Camera Recording above, the Sensor will only be triggered by the selected Input State. Recording (including Alarm Pre Buffer) will begin and will continue indefinitely.

### **Camera Stop Recording**

The Sensor will only be triggered by the selected Input State. Video (including Alarm Post Buffer) will be recorded and then recording will turn off. When used in conjunction with the Camera Start Recording action, the following will be recorded:

*Alarm Pre Buffer + selected Sensor Input (High) State trigger time + selected Sensor Input (Low) State trigger time + Post Buffer.*

**Note: It is these two new actions that allow video recording to continue for as long as the Dry Contact is active.**

### **Camera Start Recording**

Similar to Camera Recording above, the Sensor will only be triggered by the selected Input State. Recording (including Alarm Pre Buffer) will begin and will continue indefinitely.

### **Camera Stop Recording**

The Sensor will only be triggered by the selected Input State. Video (including Alarm Post Buffer) will be recorded and then recording will turn off. When used in conjunction with the Camera Start Recording action, the following will be recorded:

*Alarm Pre Buffer + selected Sensor Input (High) State trigger time + selected Sensor Input (Low) State trigger time + Post Buffer.*

**Note: It is these two new actions that allow video recording to continue for as long as the Dry Contact is active.**

## Contact Information

If you have any questions regarding this Release Notes, please contact American Dynamics Technical Services at:

<b>Toll Free</b>	1-800-507-6268, Option 2
<b>International</b>	1-561-912-6259, Option 2
<b>Fax</b>	1-450-444-2029
<b>Email</b>	adtechservices@tycoint.com
<b>Web Site</b>	www.americandynamics.net
<b>Hours</b>	08:00 – 20:00 EST

In Europe, contact EMEA / APAC Technical Support at:

<b>Toll Free</b>	+800-2255 8926	+31 47 535 2722
------------------	----------------	-----------------

### Local Direct Dial Numbers:

<b>Bahrain</b>	800 04127	
<b>Belgium</b>	0800 76 452	
<b>France</b>	0800 90 79 72	04 72 79 14 83
<b>Germany</b>	0800 1806 757	
<b>Greece</b>	00800 31229453	
<b>Italy</b>	0800 874 091	
<b>Spain</b>	900 99 39 61	900 10 19 45
<b>Russia</b>	81080020521031	
<b>Turkey</b>	00800 31923007	
<b>United Arab Emirates</b>	800 03107123	
<b>United Kingdom</b>	08081 013 753	08701 238 787

<b>Email</b>	Technical Post-Sales Inquires	<a href="mailto:emea.support@tycint.com">emea.support@tycint.com</a>
	Technical Pre-Sales Inquires	<a href="mailto:emea.presales@tycoint.com">emea.presales@tycoint.com</a>
	Technical Training Inquires	<a href="mailto:emea.training@tycoint.com">emea.training@tycoint.com</a>

<b>Web Site</b>	<a href="http://www.tycoemea.com">www.tycoemea.com</a>	<a href="http://www.calltyco.com">www.calltyco.com</a>
-----------------	--	--

<b>Hours</b>	08:00 – 18:00 CET
--------------	-------------------

**Important Note:** In case of discrepancy, the information in this document supersedes the information in any document referenced herein. Information furnished by American Dynamics is believed to be accurate and reliable. However, no responsibility is assumed by American Dynamics for its use, nor any infringements of other rights of third parties which may result from its use. No license is granted by implications or otherwise under any patent rights of American Dynamics.

