



The Intelligent Surveillance Solution

Hardware & Software Installation user's manual

Ver. 99.301.8520.001

TABLE OF CONTENTS

TABLE OF CONTENTS 1

1000 SERIES; 2000 SERIES; 3000 SERIES2

 Product Specification2

 Hardware Installation3

 System Requirement12

 G3-Card Driver Installation13

 R-card Driver Installation15

 Software Installation17

4000 SERIES21

 Product Specification21

 Hardware Installation22

 System Requirement23

 Driver Installation24

 Software Installation28

5000 SERIES32

 Product Specification32

 Hardware Installation33

 System Requirement35

 Driver Installation36

 Software Installation41

7000 SERIES45

 Product Specification45

 Hardware Installation46

 System Requirement48

 Driver Installation49

 Software Installation52

Product Specification**1000 SERIES; 2000 SERIES; 3000 SERIES****Product Specification**

G3 Card

	3000 Series	2000 Series	1000 Series
Display Rate	120fps(NTSC); 100fps (PAL)	60fps(NTSC); 50fps (PAL)	30fps(NTSC); 25fps (PAL)
Recording Rate	120fps(NTSC); 100fps (PAL)	60fps(NTSC); 50fps (PAL)	30fps(NTSC); 25fps (PAL)
Maximum Card	2	4	4
Video Input	4; 8; 12; 16	4; 8	4; 8
Audio Input	4	2	1
Video Resolution	NTSC: 704x480 ; 640 x 480 ; 352x240 PAL: 704x576 ; 640 x 576 ;352x288		
Compression Format	Software Compression MPEG 4		

R Card

	3000 Series	2000 Series	1000 Series
Display Rate	120fps(NTSC); 100fps (PAL)	60fps(NTSC); 50fps (PAL)	30fps(NTSC); 25fps (PAL)
Recording Rate	120fps(NTSC); 100fps (PAL)	60fps(NTSC); 50fps (PAL)	30fps(NTSC); 25fps (PAL)
Maximum Card	2	4	4
Video Input	4; 8; 16	4; 8	4; 8
Audio Input	4	2	1
Video Resolution	NTSC: 320x240; 640x240; 640x480 PAL: 320x240; 640x240; 640x480		
Compression Format	Software Compression MPEG 4		

Hardware Installation

Hardware Installation

For G3-card and R-card, the hardware installation steps are all the same except the connection of Audio/Video Cable. The following figure shows the detail.

Step 1: Insert the card onto an empty PCI slot. Connect the **Audio/Video Cable** to the connector in the same color.

Step 2: Turn on your PC and start Windows.

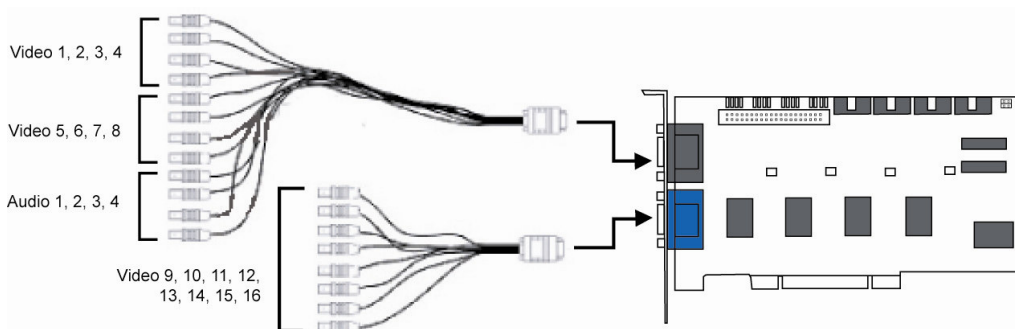
Step 3: Insert the included Software CD into CD-ROM.

Step 4: Select the driver from root directory \driver folder and its contents. You can see the detail from page 13.

Step 5: After driver being installed, restart your PC.

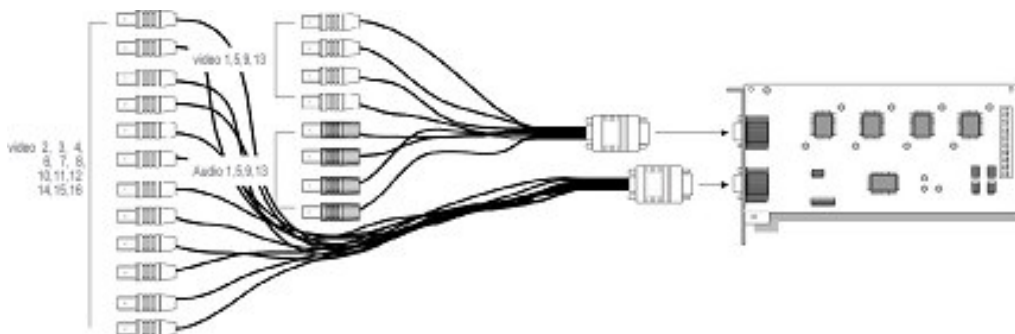
Connect the Audio/Video Cable

1. G3-card



Note: for G3-3000 series, audio channels are located at 1, 2, 3, 4.

2. R-card



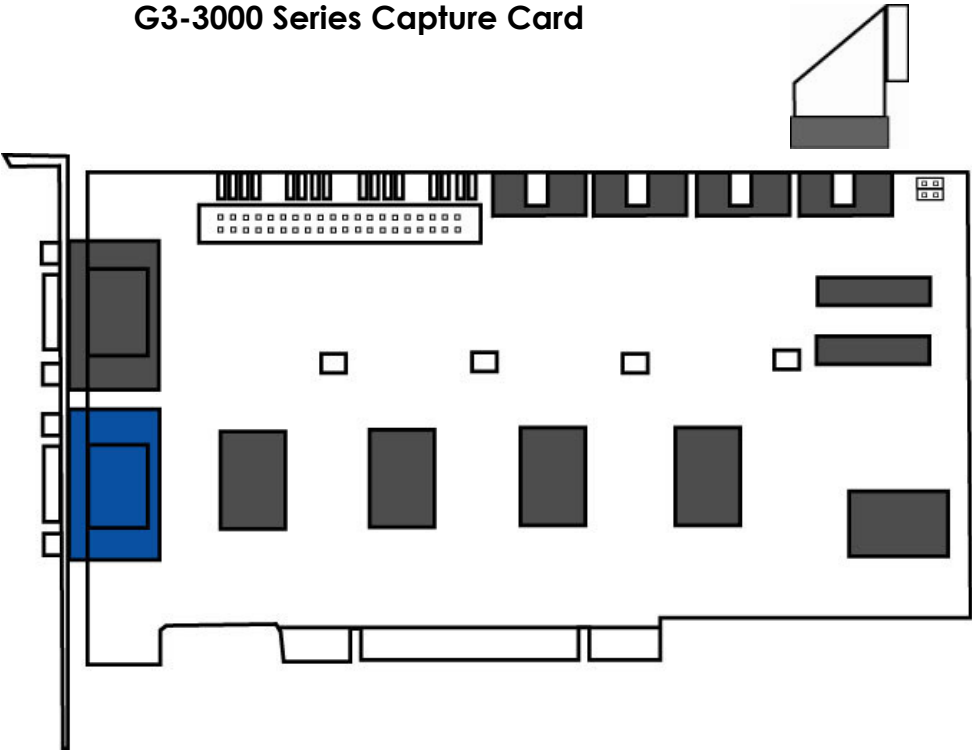
Note: for R- 3000 series, audio channels are located at 1,5,9,13.

Optional I/O Card referring to the figures on the following pages.

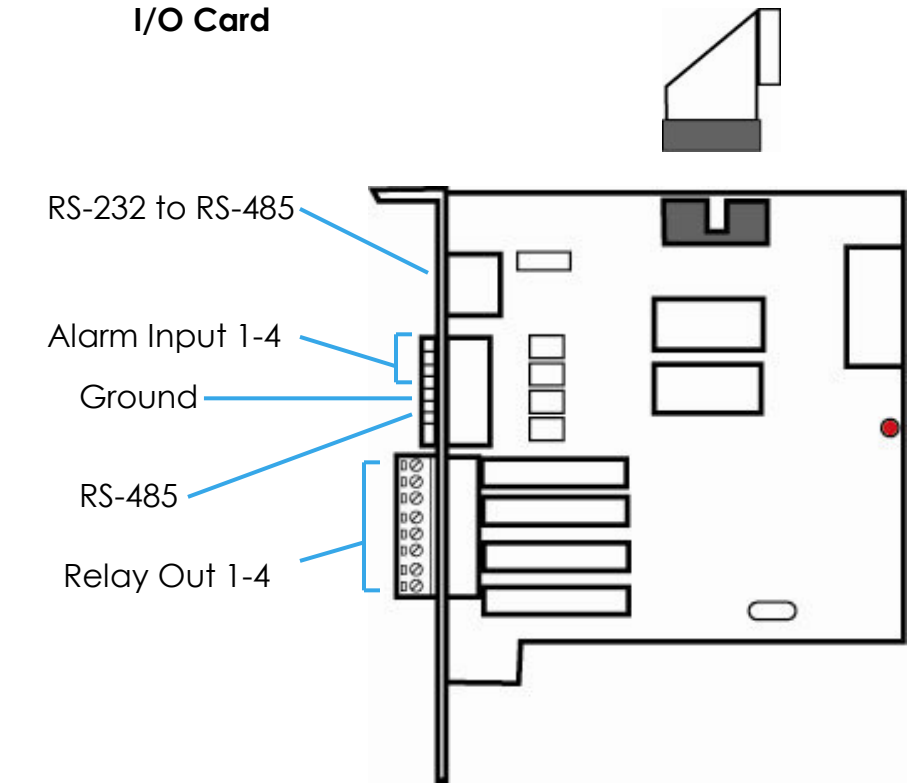
Insert the card onto your PC.

Connect the Capture Card and the I/O Card with an included ribbon cable. You may connect the ribbon cable to one of the I/O ports on the Capture Card.

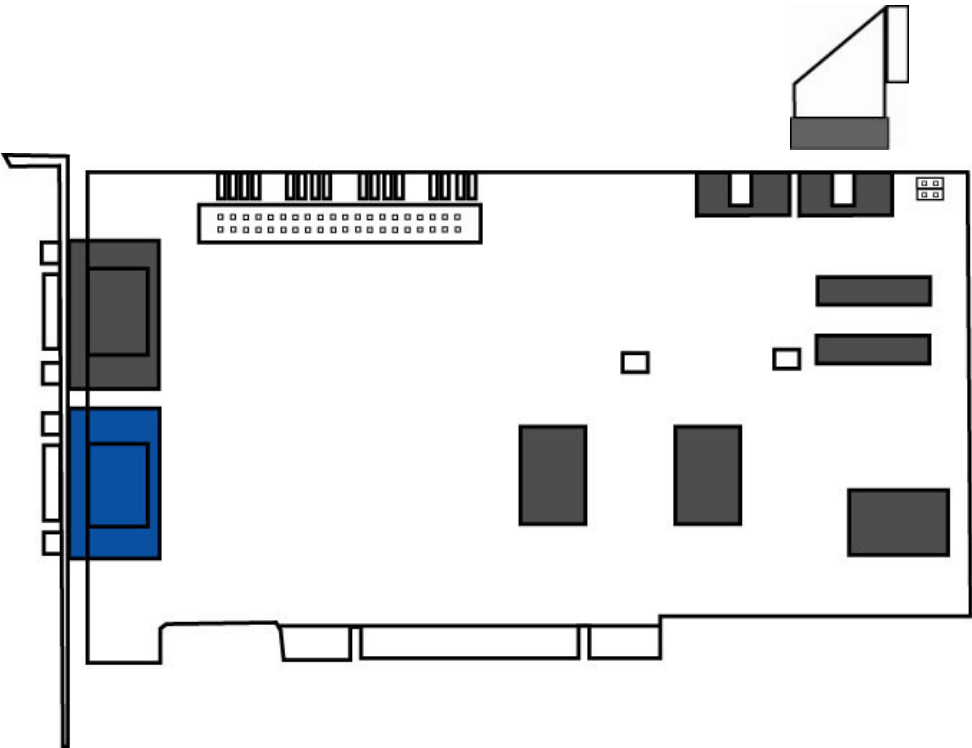
G3-3000 Series Capture Card



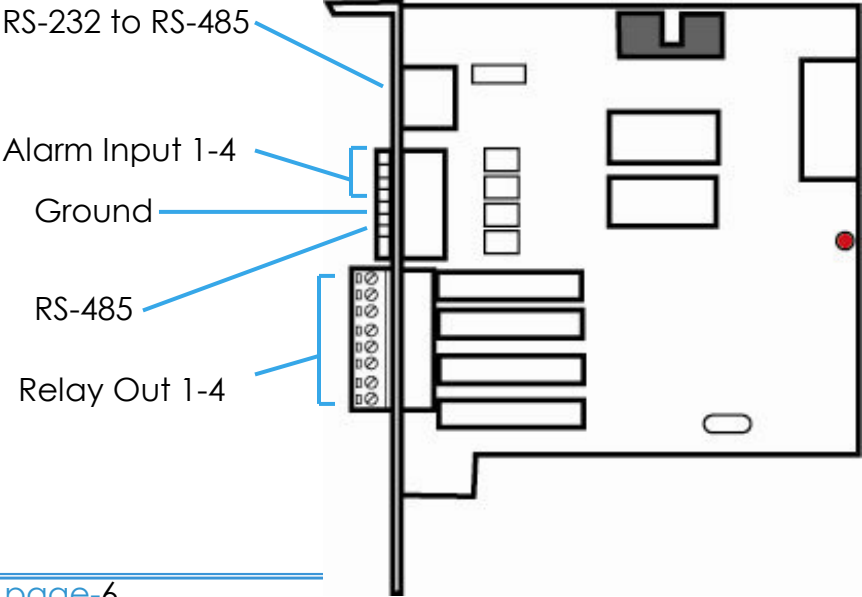
I/O Card



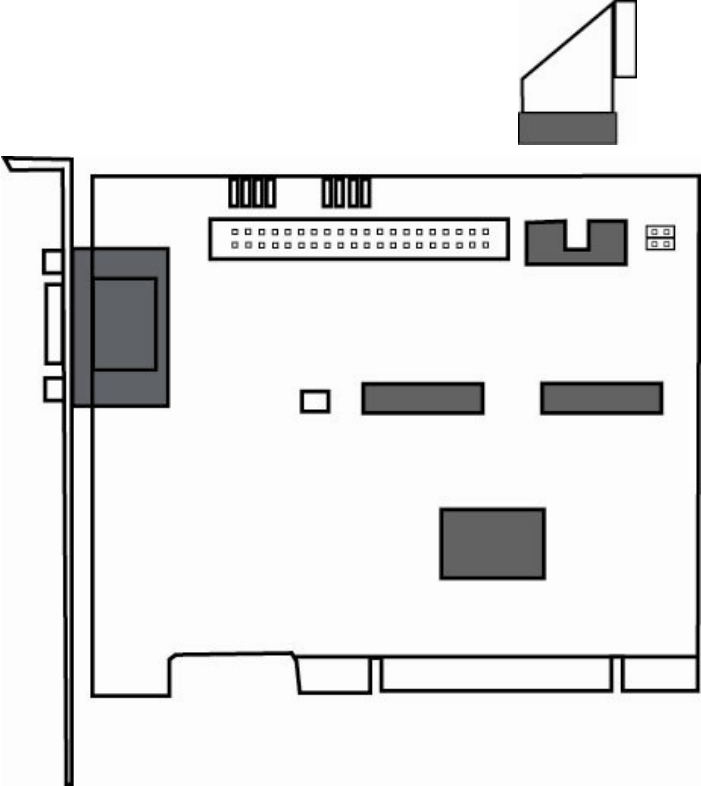
G3-2000 Series Capture Card



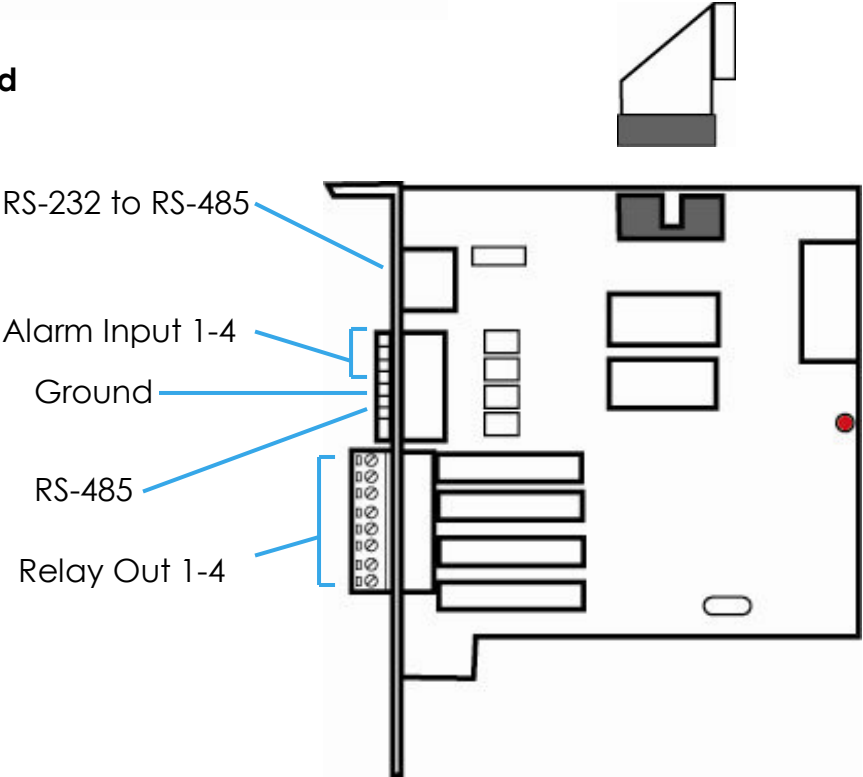
I/O Card



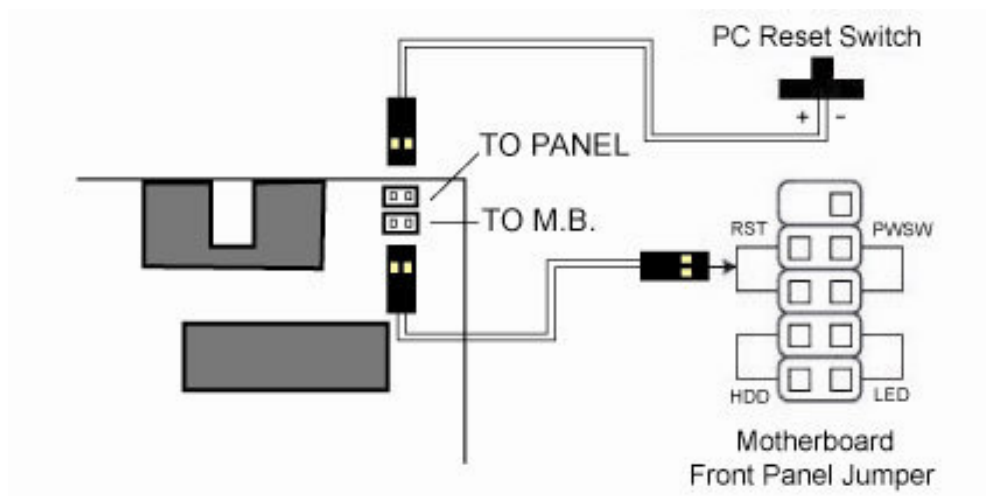
G3-1000 Series Capture Card



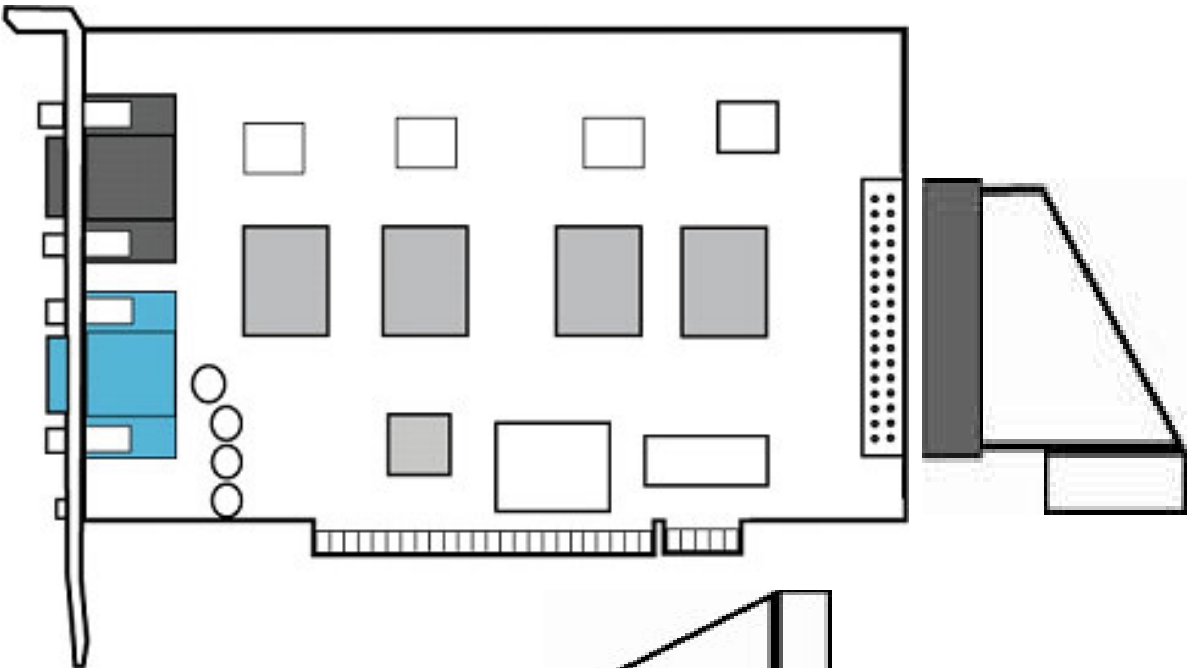
I/O Card



G3-card Watchdog Installation

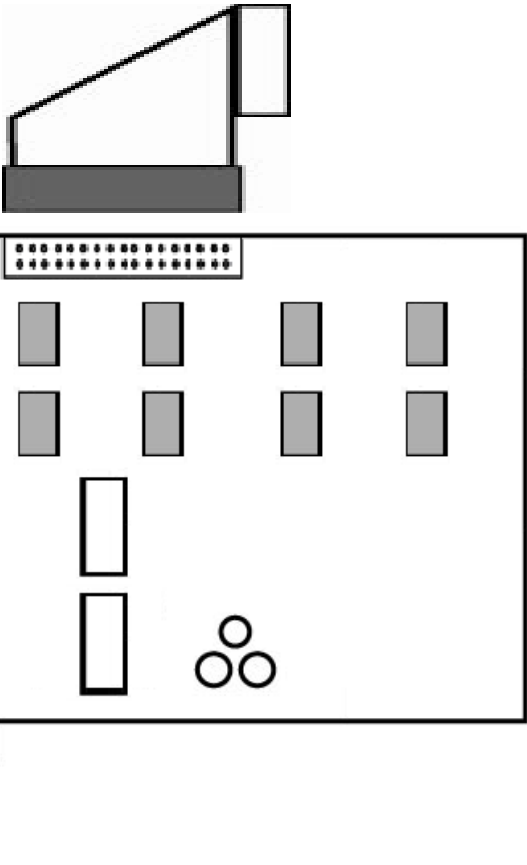


R-3000 Series Capture Card

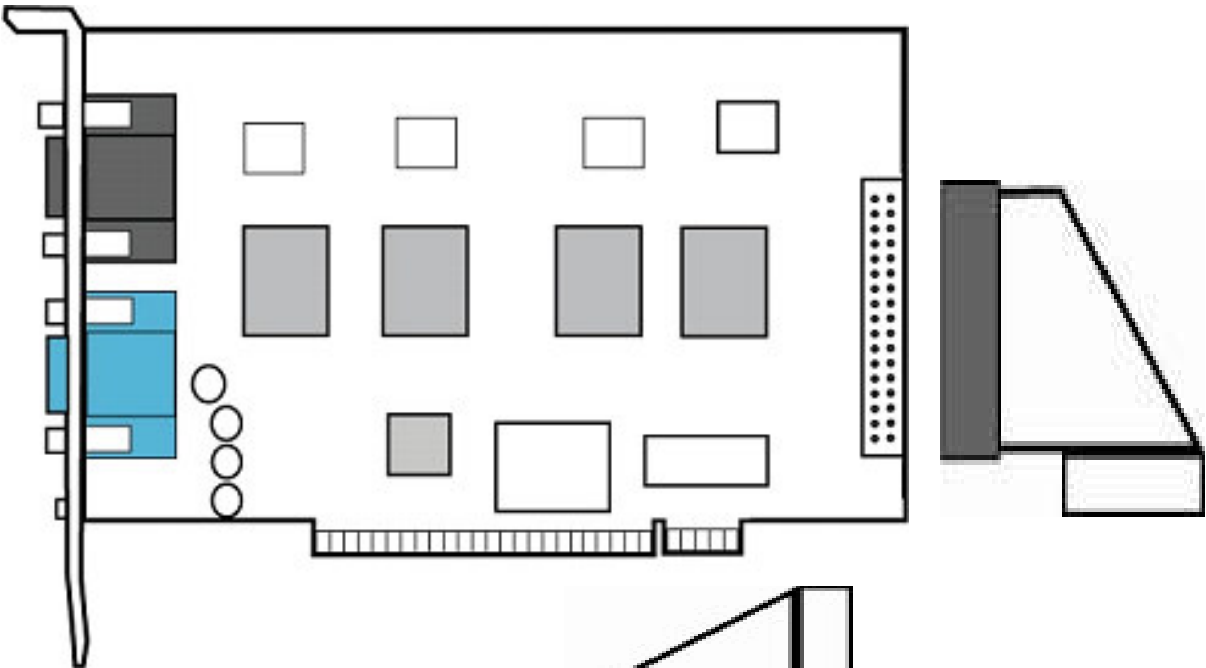


I/O Card

- Relay Out 1-8
- Alarm Input 1-8
- Ground



R-2000 Series Capture Card

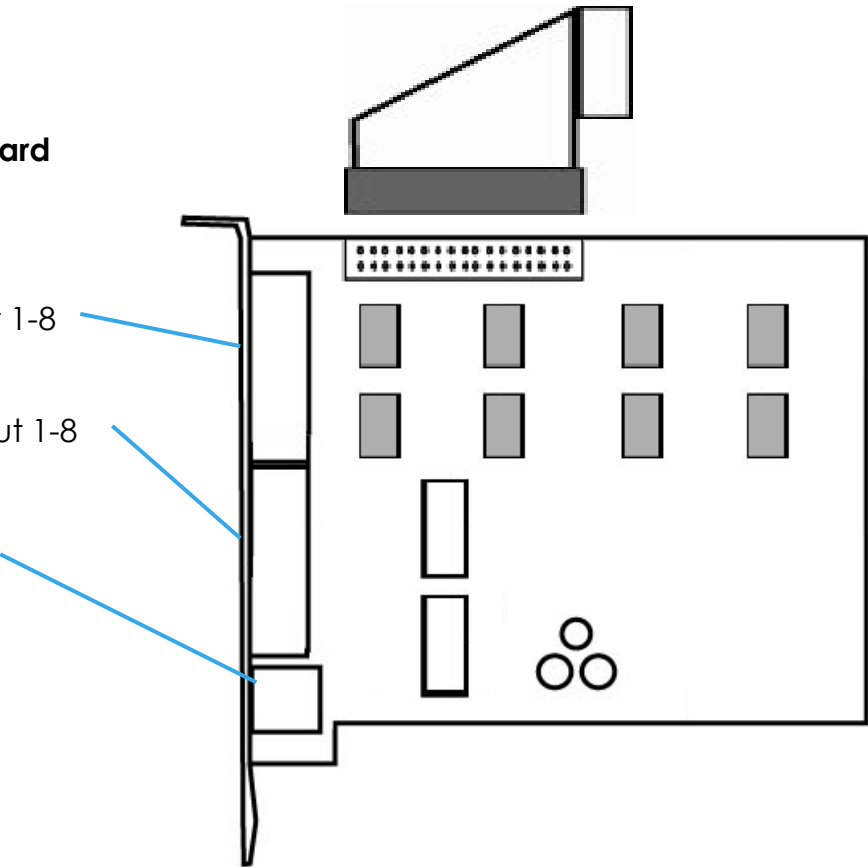


I/O Card

Relay Out 1-8

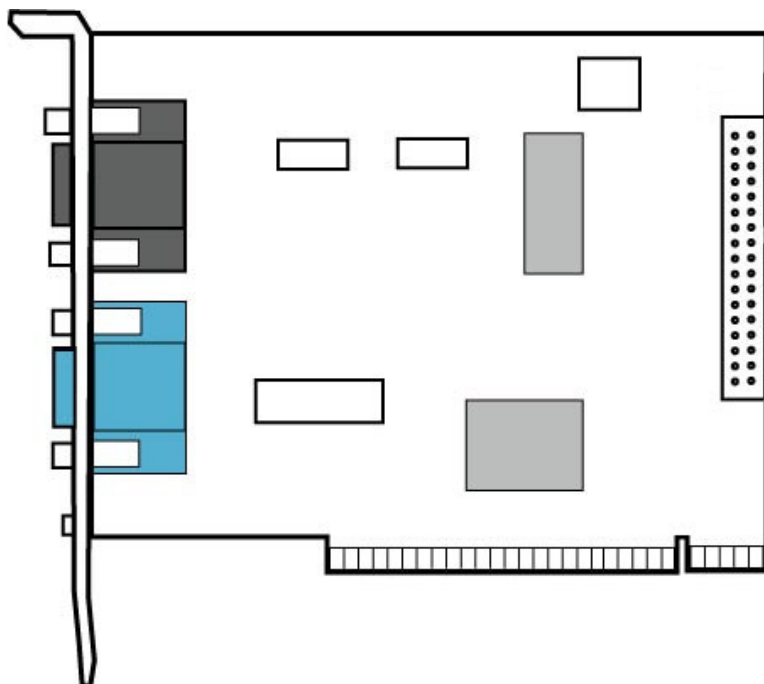
Alarm Input 1-8

Ground

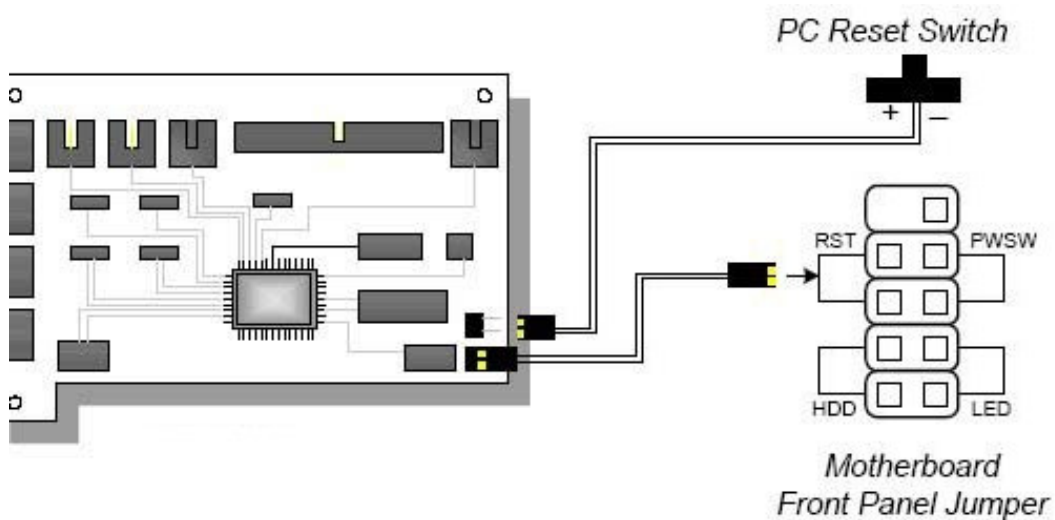


Hardware Installation

R-1000 Series Capture Card



Watchdog Installation



System Requirement

System Requirement

	SCB-3000 x2 (240fps)	SCB-3000 (120fps)	SCB-2000 (60fps)	SCB-1000 (30fps)
CPU	Intel Core 2 Duo E6400	Intel Pentium D 930	Intel P4 2.8 GHz	Intel P4 2.8 GHz
RAM	1 GB	1 GB	512 MB	512 MB
Mother-board	Intel 945 or 965 chip, Intel Chipset recommended			
Display	ATI Radeon 9200, nVIDIA GeForce FX-5200, Intel 945 / 965, or above (ATI recommended)			
Ethernet	100 BaseT or Above, Gigabit LAN Recommended			
Hard Disk	80 GB or above			
OS	MS Windows 2000 / XP Pro SP2 / 2003			

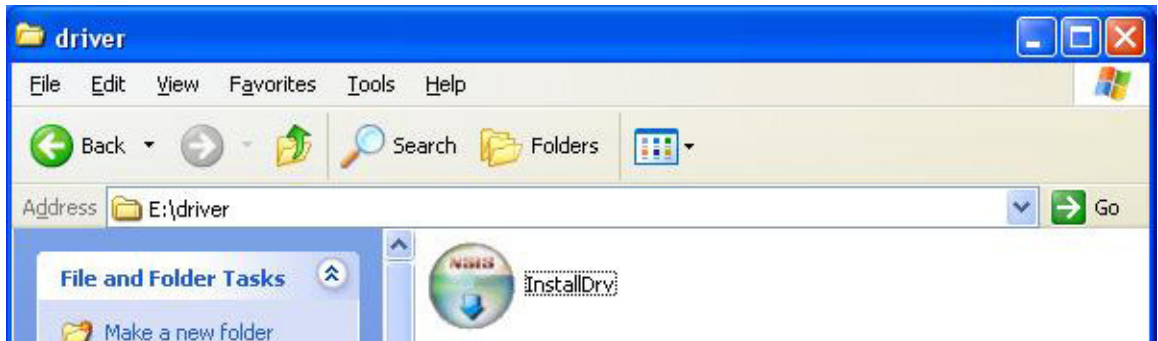
*Requirement for G3-card and R-card are the same.

Driver Installation

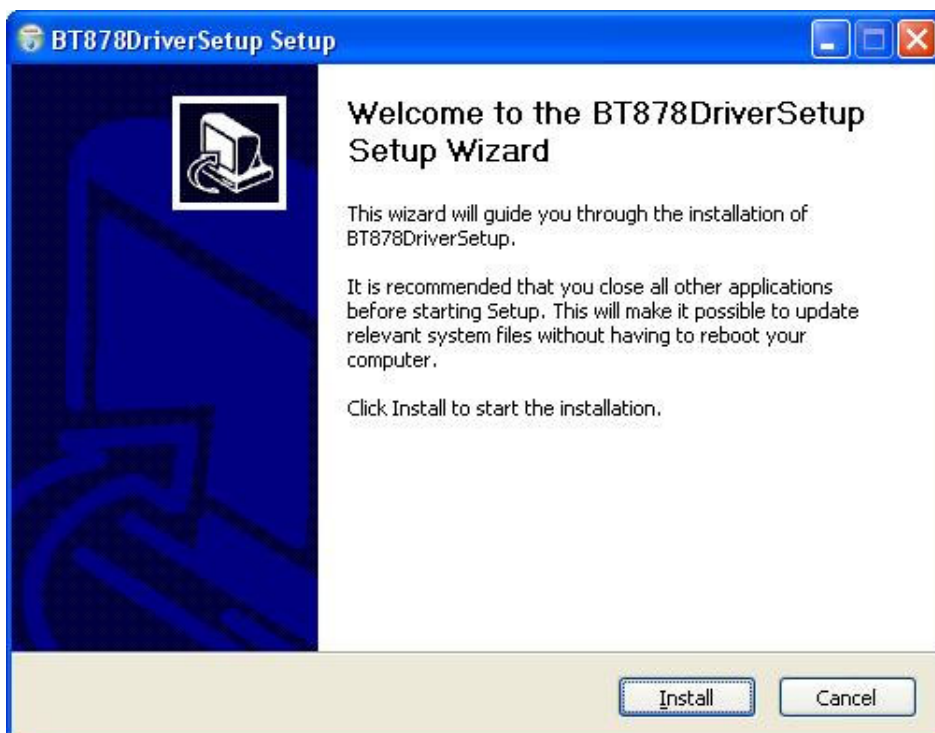
G3-Card Driver Installation

Step 1: Insert the Installation CD.

Step 2: Run InstallDrv.exe from the CD-ROM driver/ directory to install.

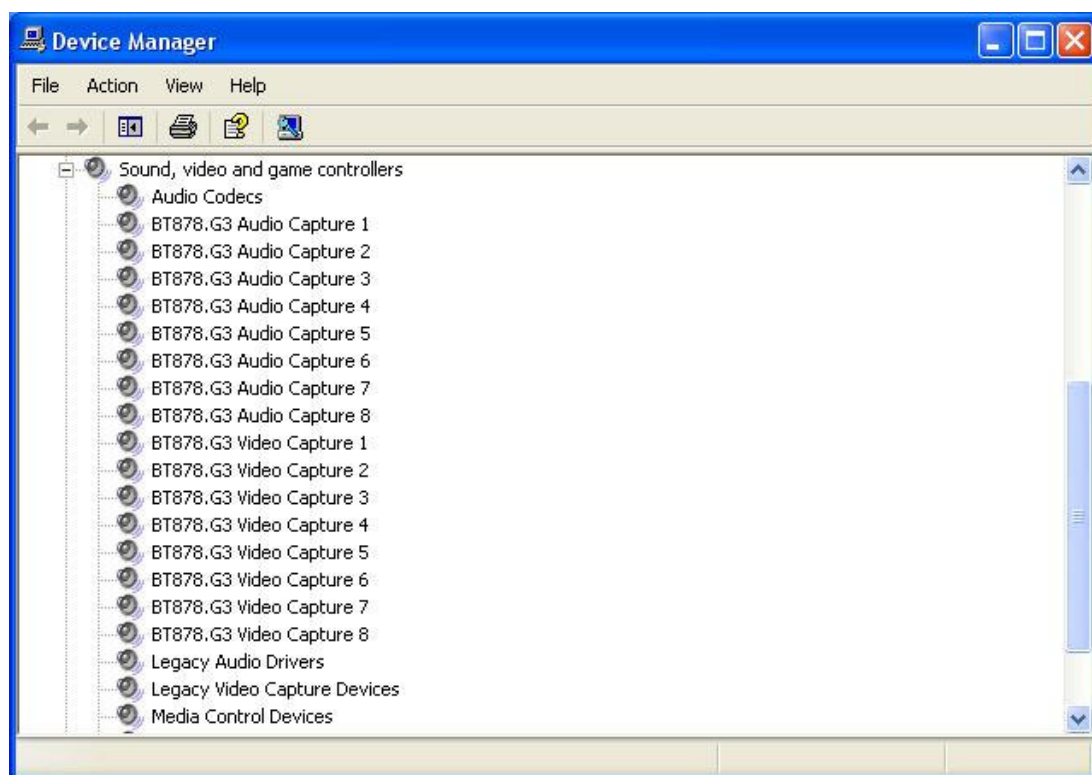


Step 3: Press install button



Driver Installation

Step 4: Driver Installation finish and check the device from Device Manager. You will find “BT878.G3 Audio Capture” and “BT878 .G3 Video Capture” in “Sound, video, and game controllers”

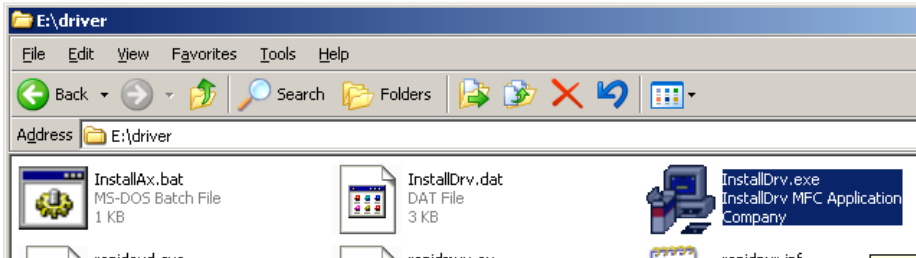


Driver Installation

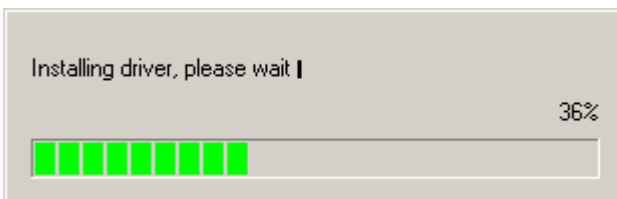
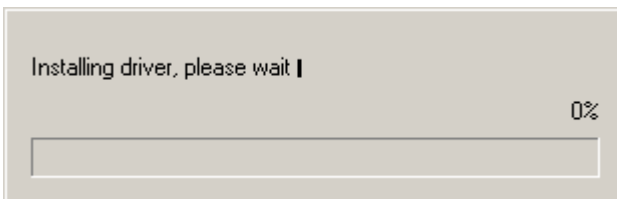
R-card Driver Installation

Step 1: Insert the Installation CD.

Step 2: Run InstallDrv.exe from the CD-ROM driver/ directory to install.

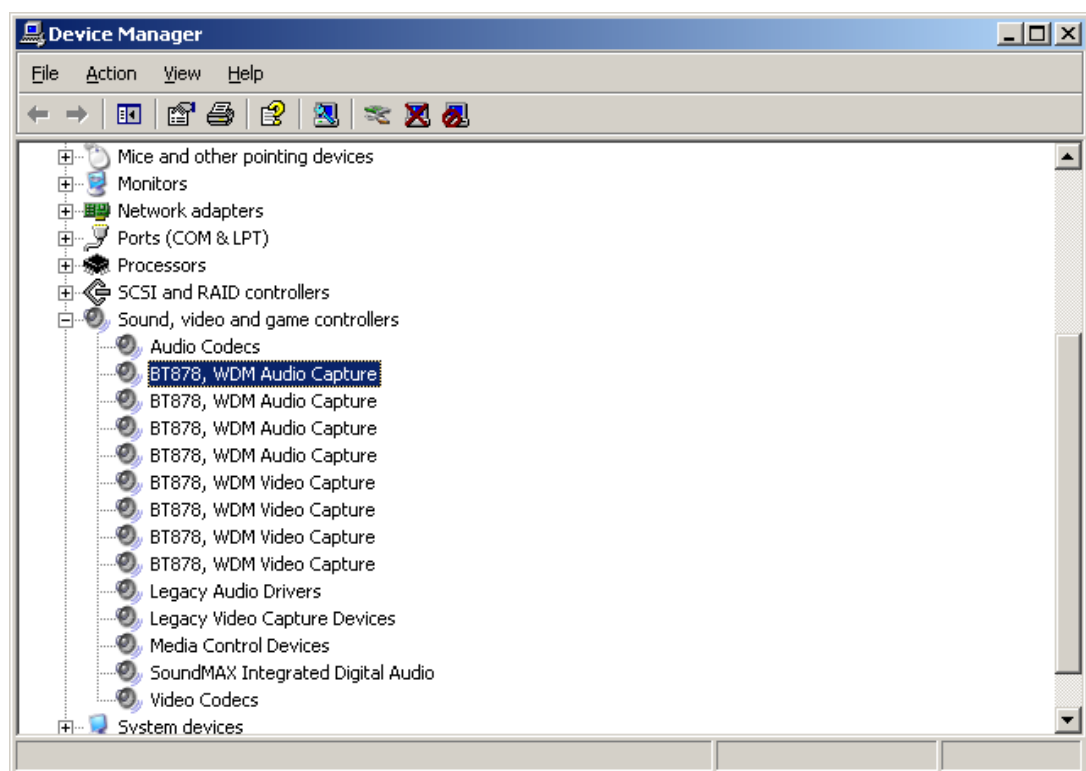


Step 3: Installing driver, please wait



Driver Installation

Step 4: Driver Installation finish and check the device from Device Manager. You will find “BT878 WDM Audio Capture” and “BT878 WDM Video Capture” in “Sound, video, and game controllers”



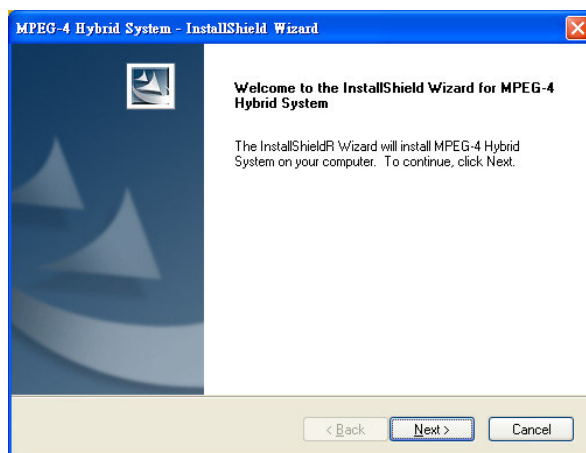
Software Installation

Software Installation

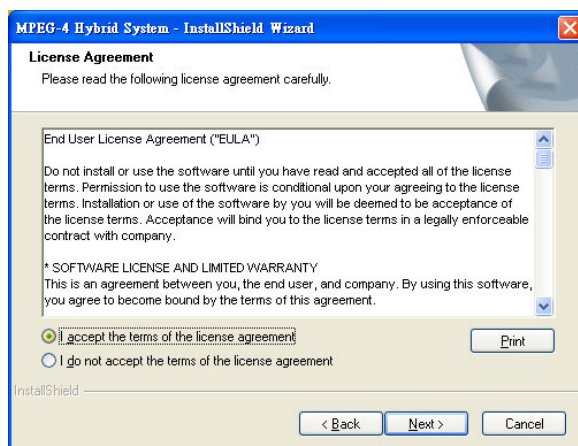
Software installation for G3-card and R-card basically are the same. The title of the panel would be different to show which card is installed. Following diagrams are G3-card.

Step 1: Insert the Installation CD.

Step 2: Run Setup.exe from the CD-ROM directory to install.

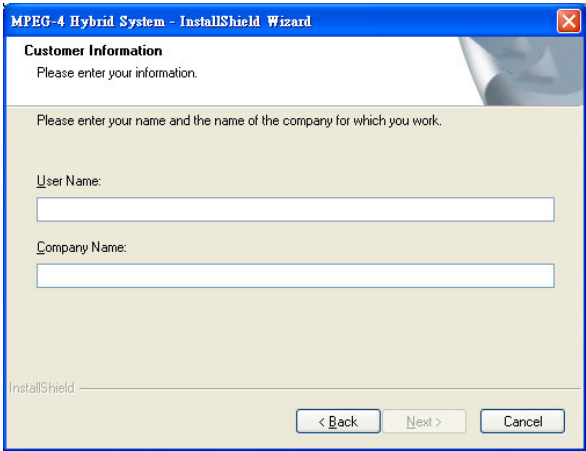


Step 3: Check the option "I accept the terms of the license agreement".



Software Installation

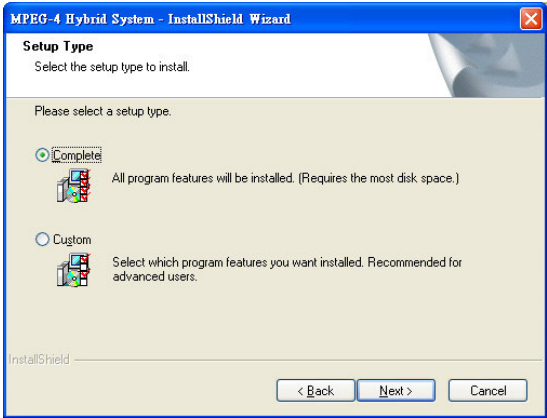
Step 4: Please enter your name and the company name for which you work.



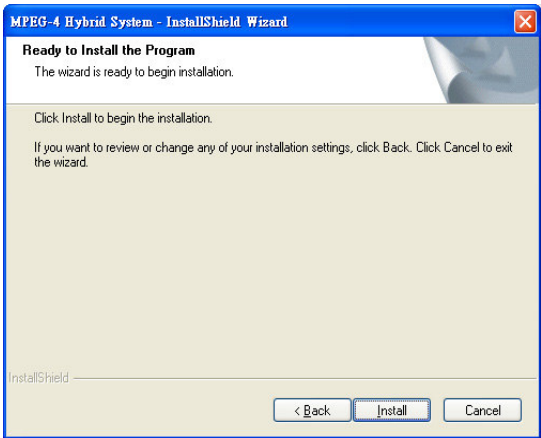
COMPLETE SETUP TYPE:

Install all program features into the default directory.

Check the option “Complete”. All program features will be installed. [Require the most disk space.]



Press the “install” to start the installation.



Software Installation

CUSTOM SETUP TYPE:

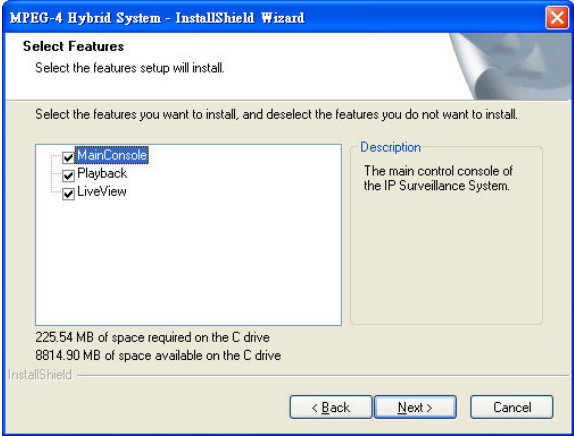
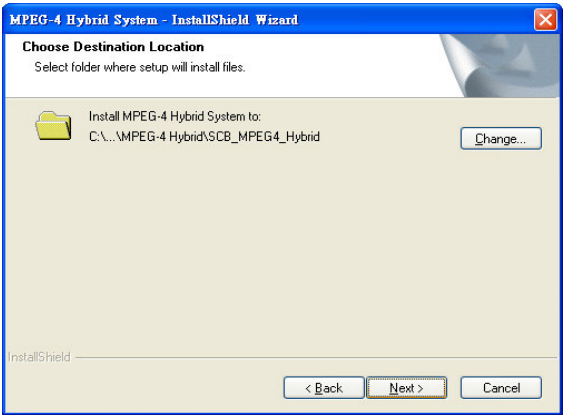
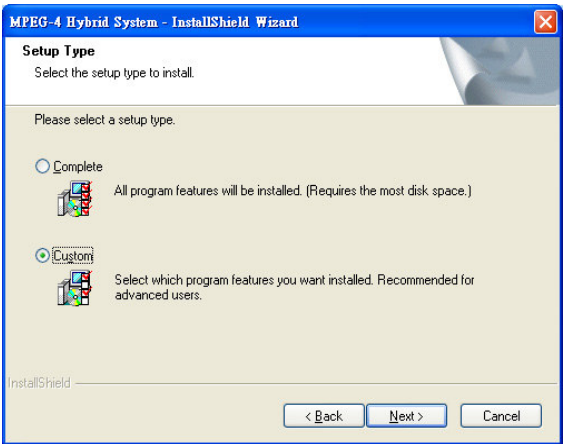
Install the system to a preferred directory. Or select whichever feature(s) you wish to install.

Check the option “Custom”.
Select which program features you want to install. This is recommended for advanced users.

Select folder where setup will install files.

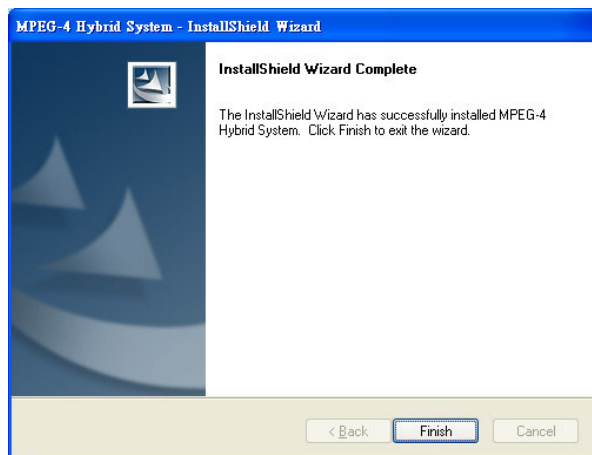
Select the features setup will install.

Hint: For example, select only Playback and LiveView for installation. Install and use only these features on multiple remote sites at home or anywhere with a PC.

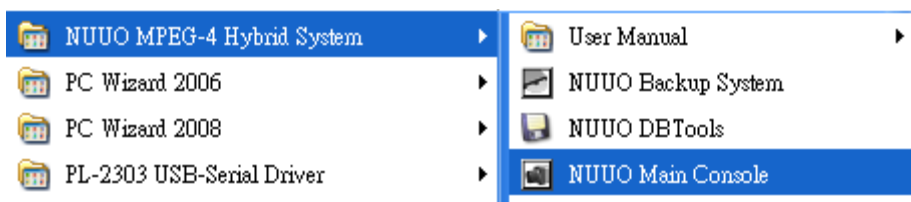


Software Installation

Press “Finish” to finish the installation.



Execute the Main Console



Enter the password you like into the edit box and enter again at the edit of Password Confirm. And then press “OK”. Now enjoy our Intelligent Surveillance Solution.



Product Specification

4000 SERIES

Product Specification

	4000 Series
Display Rate	480fps(NTSC); 400fps (PAL)
Recording Rate	480fps(NTSC); 400fps (PAL)
Maximum Card	1
Video Input	16
Audio Input	16
Video Resolution	NTSC: 352x240; 704x480
	PAL: 352x288; 704x576
Compression Format	Software Compression MPEG 4

Hardware Installation

Hardware Installation

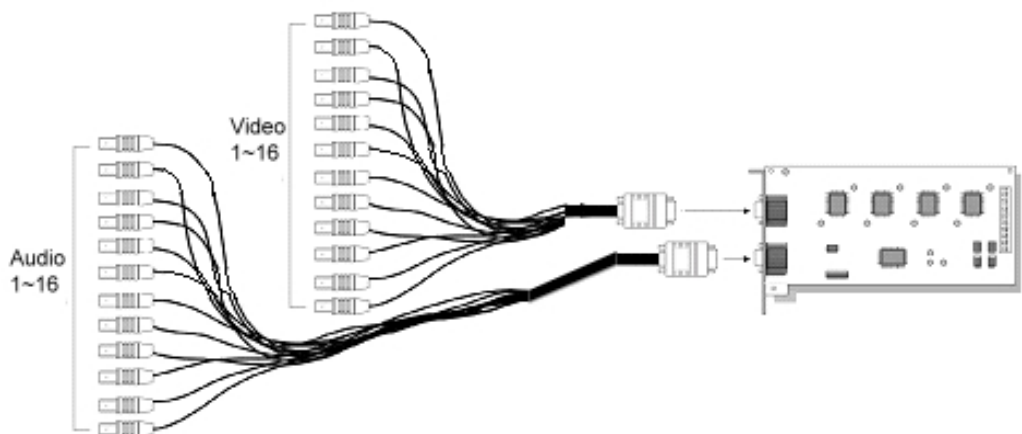
Step 1: Insert the card onto an empty PCI slot. Connect the **Audio/Video Cable** to the connector in the same color.

Step 2: Turn on your PC and start Windows.

Step 3: Insert the included Software CD into CD-ROM.

Step 4: After driver being installed, restart your PC. See the detail of driver installation from page 24.

Connect the Audio/Video Cable



System Requirement

System Requirement

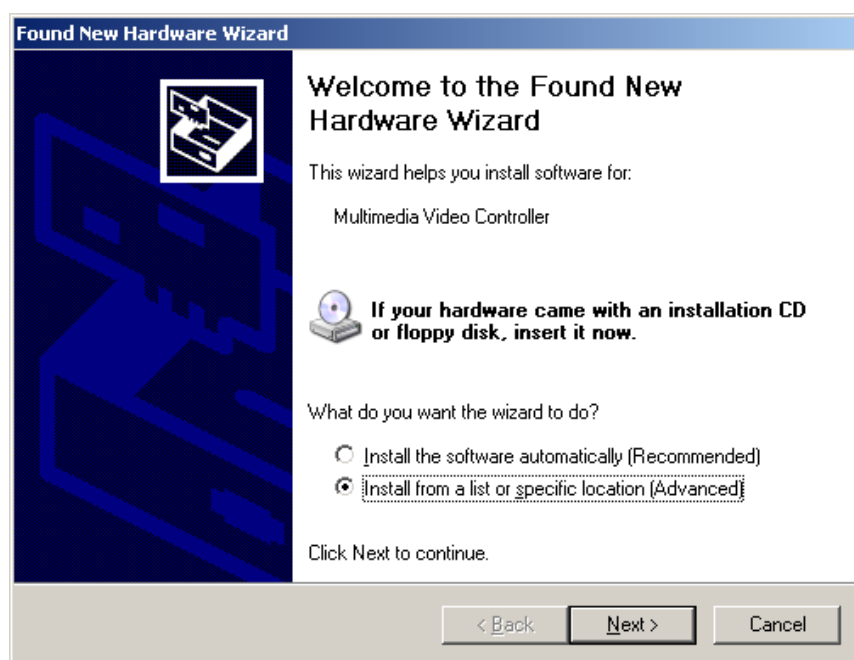
Total FPS at CIF	~600	600~480	480~240	240~120	120~
CPU	Intel Core 2 Duo QX6700	Intel Core 2 Duo E6400	Intel Pentium D 930	Intel P4 2.8 GHz	Intel P4 2.4 GHz
RAM	2 GB	1 GB	1 GB	512 MB	512 MB
Mother- board	Intel 945 or 965 chip, Intel Chipset recommended				
Display	ATI Radeon 9200, nVIDIA GeForce FX-5200, Intel 945 / 965, or above (ATI recommended)				
Ethernet	100 BaseT or Above, Gigabit LAN Recommended				
Hard Disk	80 GB or above				
OS	MS Windows 2000 / XP Pro SP2 / 2003				

Driver Installation

Driver Installation

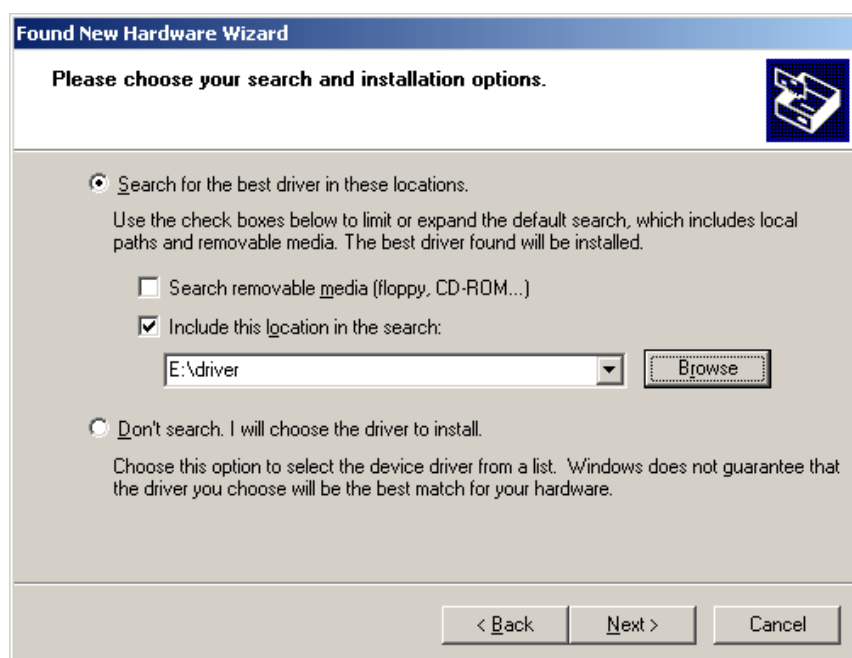
Step 1: Insert the Installation CD.

Step 2: select “Install from a list or specific location (Advanced)” in “the Found New Hardware Wizard.”



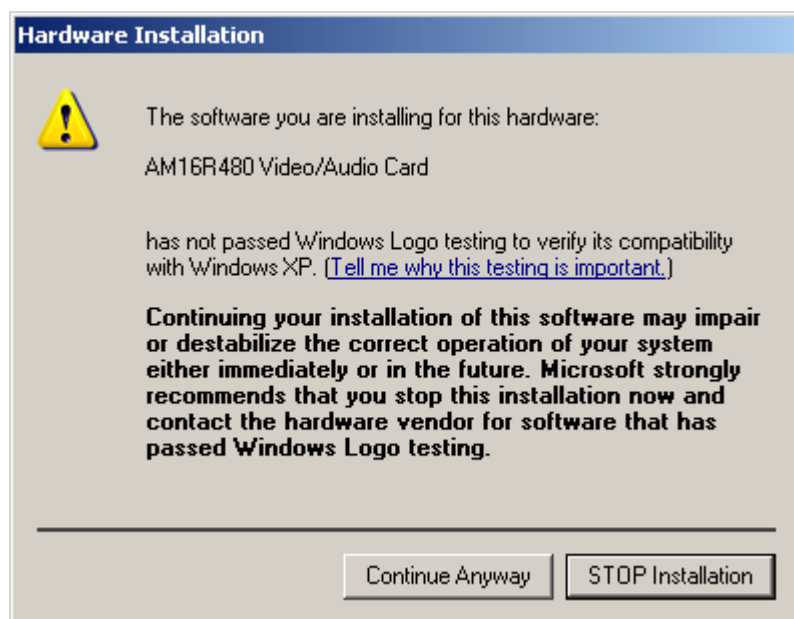
Driver Installation

Step 3: press “Browse” and select the driver from root directory \driver folder.

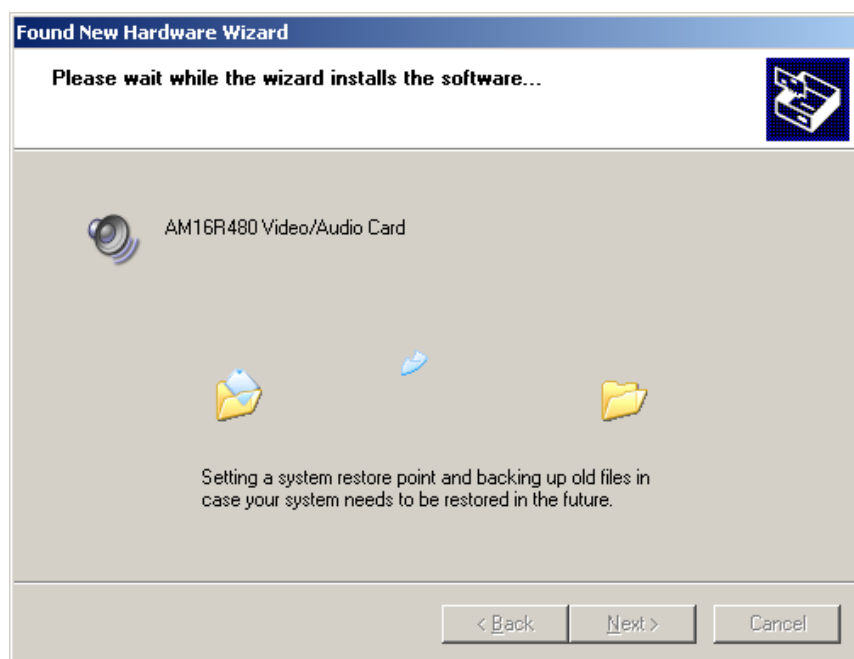


Driver Installation

Step 4: Please press "Continue Anyway."

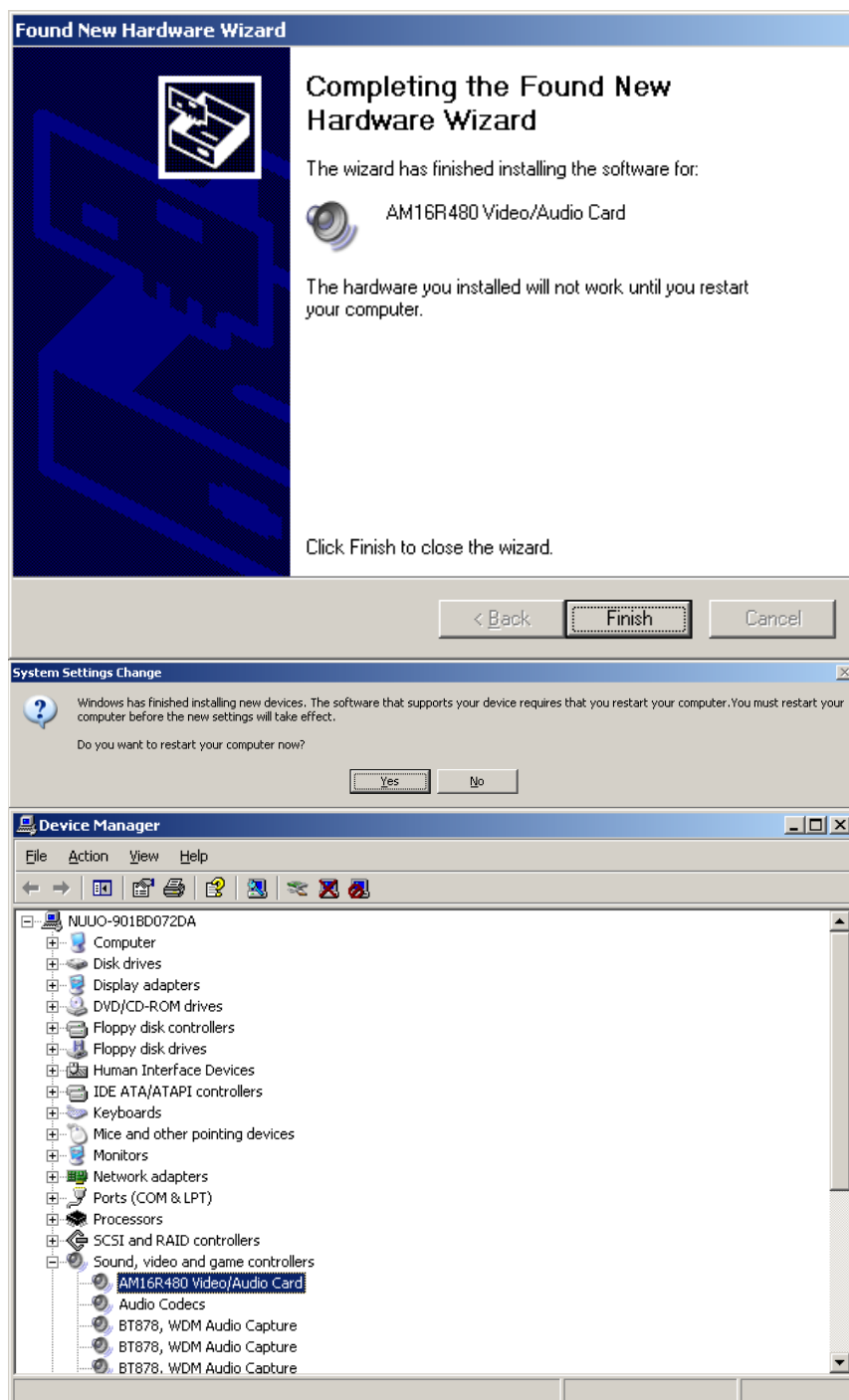


Step 5: Please wait while the wizard installs the software...



Driver Installation

Step 6: Driver Installation finish, restart you PC, and check the device from Device Manager. You will find "AM16R480 Video/Audio Card in "Sound, video, and game controllers"

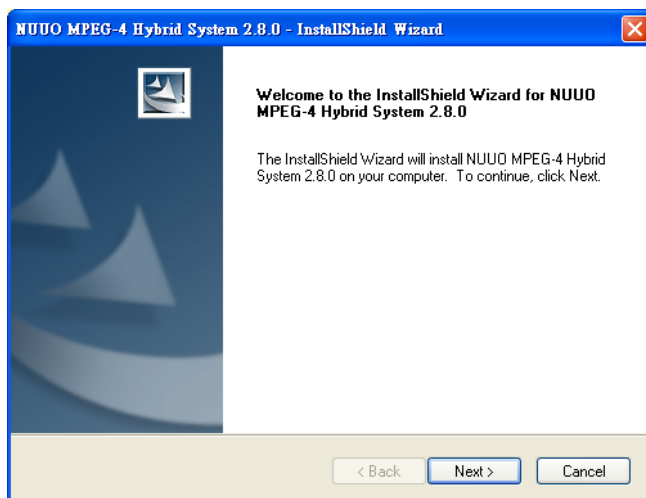


Software Installation

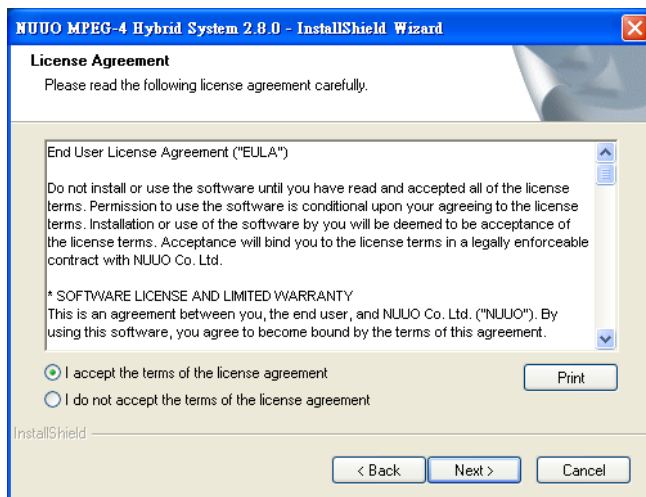
Software Installation

Step 1: Insert the Installation CD.

Step 2: Run Setup.exe from the CD-ROM directory to install.

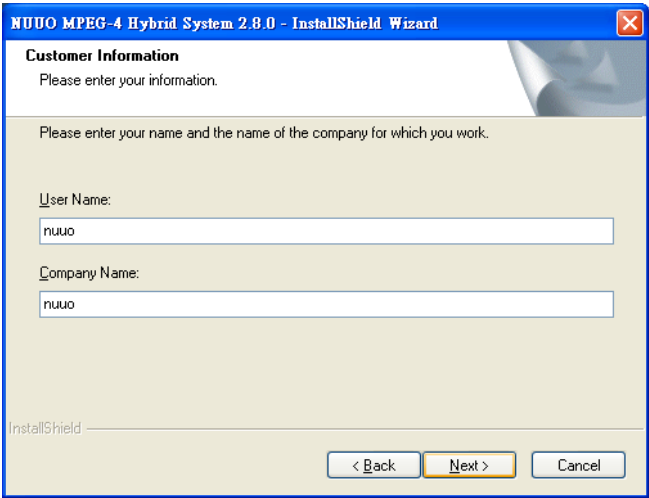


Step 3: Check the option "I accept the terms of the license agreement".



Software Installation

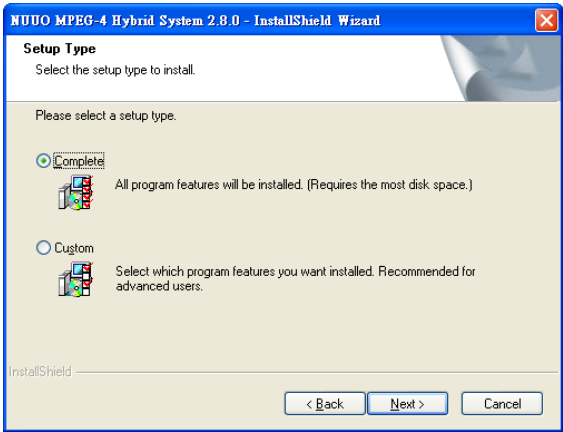
Step 4: Please enter your name and the company name for which you work.



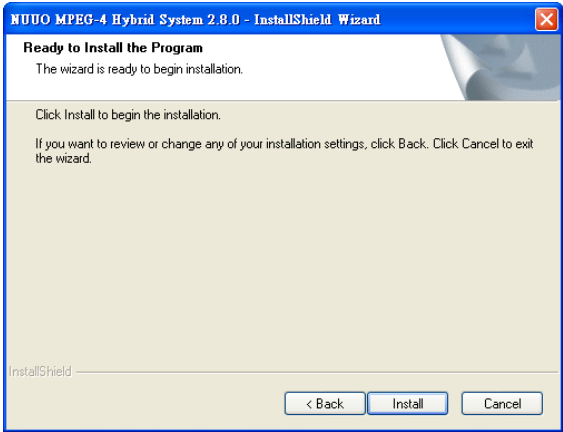
COMPLETE SETUP TYPE:

Install all program features into the default directory.

Check the option “Complete”. All program features will be installed. [Require the most disk space.]



Press the “install” to start the installation.

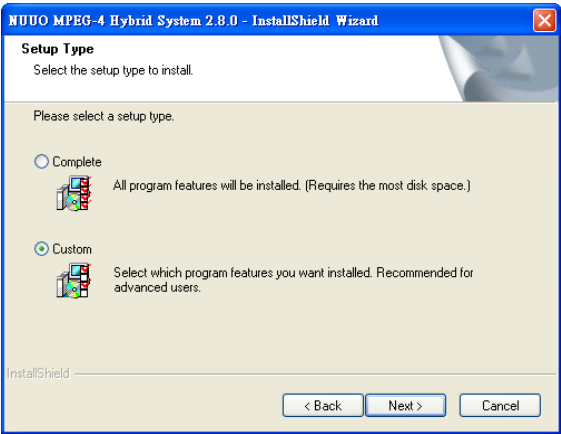


Software Installation

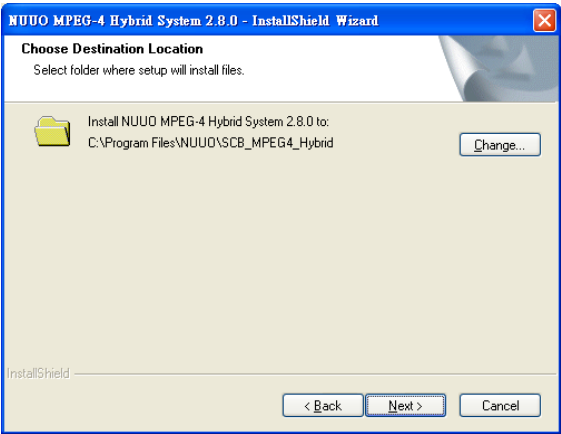
CUSTOM SETUP TYPE:

Install the system to a preferred directory. Or select whichever feature(s) you wish to install.

Check the option “Custom”. Select which program features you want to install. This is recommended for advanced users.

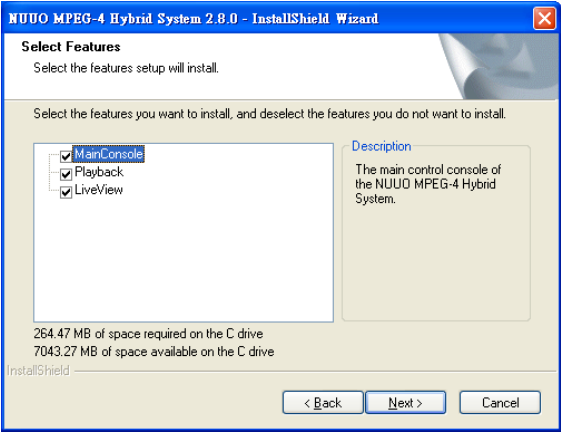


Select folder where setup will install files.



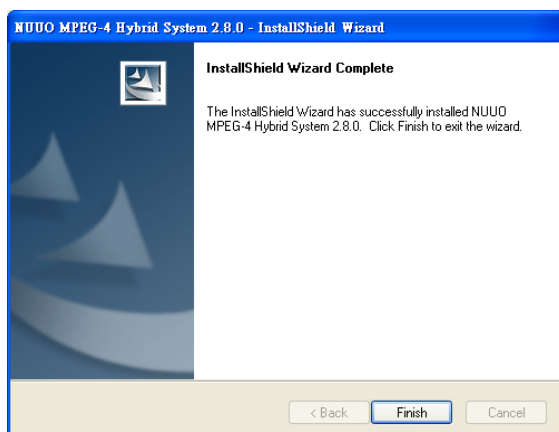
Select the features setup will install.

Hint: For example, select only Playback and LiveView for installation. Install and use only these features on multiple remote sites at home or anywhere with a PC.

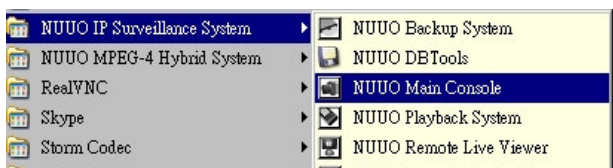


Software Installation

Press “Finish” to finish the installation.



Execute the Main Console



Enter the password you like into the edit box and enter again at the edit of Password Confirm. And then press “OK”. Now enjoy our Intelligent Surveillance Solution.



Product Specification

5000 SERIES

Product Specification

	5016	5008	5004
Display Rate	480fps(NTSC); 400fps (PAL)	240fps(NTSC); 200fps (PAL)	120fps(NTSC); 100fps (PAL)
Recording Rate	480fps(NTSC); 400fps (PAL)	240fps(NTSC); 200fps (PAL)	120fps(NTSC); 100fps (PAL)
Maximum Card	4	4	4
Video Input	16	8	4
Audio Input	16	8	4
Video Resolution	NTSC: 176x120; 352x240; 528x320; 704x480		
	PAL: 176x144; 352x288; 528x384; 704x576		
Compression Format	Hardware Compression H.264		

Hardware Installation

Hardware Installation

Connecting the Audio/Video Cable - referring to the figure on next page.

There are four audio and four video input connectors on the **Audio/Video Cable**. The audio input connectors are with white wires and marks of "AID" on them; the video input connectors are with red wires and the marks of "VID".

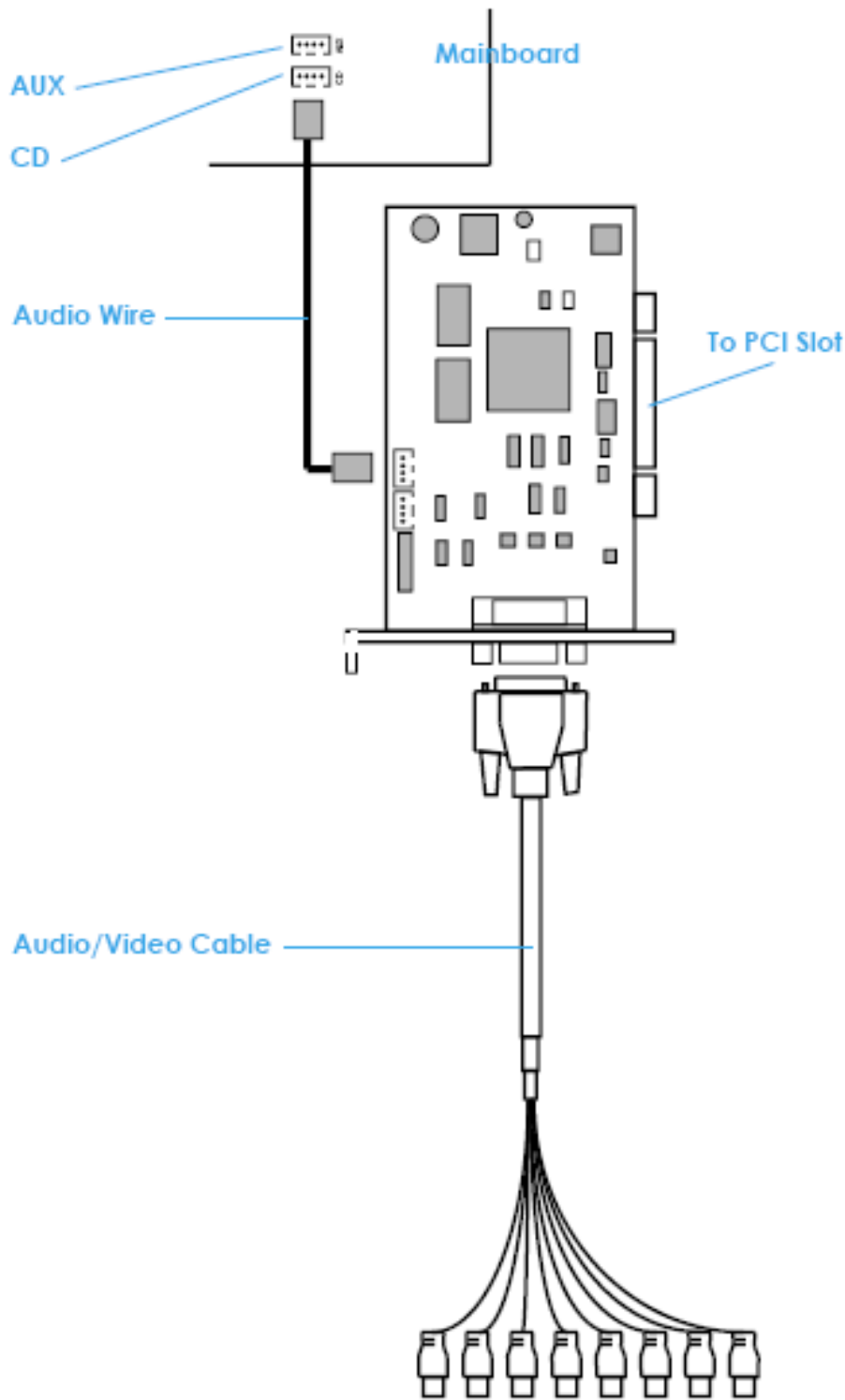
Connecting the Audio Wire referring to the figure on next page.

Plug the **Audio Wire** to the **out** connector of the Hardware Compression Card and then connect it to either the **AUX** or **CD** connector on the mainboard.

With the **Audio Wire** connected, you will be able to get the audio preview on Main Console.

Note: It is known that NUUO **5004 card** (Hikvision 4004HC) has compatibility problem with PPCI slot. NUUO 5004 cards can only be installed in **SPCI slots**. Normally, those 3 PCI slots nearest to CPU are PPCI slots. Avoid install 5004 card in these 3 slots. If driver was installed okay but one still encountered a problem shown below, try to install this 5004 card in another PCI slot.

5000 Series Capture Card



Hardware Installation

System Requirement

Total FPS at CIF	~600	600~480	480~240	240~120	120~
CPU	Intel Core 2 Duo QX6700	Intel Core 2 Duo E6400	Intel Pentium D 930	Intel P4 2.8 GHz	Intel P4 2.4 GHz
RAM	2 GB	1 GB	1 GB	512 MB	512 MB
Mother- board	Intel 945 or 965 chip, Intel Chipset recommended				
Display	ATI Radeon 9200, nVIDIA GeForce FX-5200, Intel 945 / 965, or above (ATI recommended)				
Ethernet	100 BaseT or Above, Gigabit LAN Recommended				
Hard Disk	80 GB or above				
OS	MS Windows 2000 / XP Pro SP2 / 2003				

Driver Installation

Driver Installation

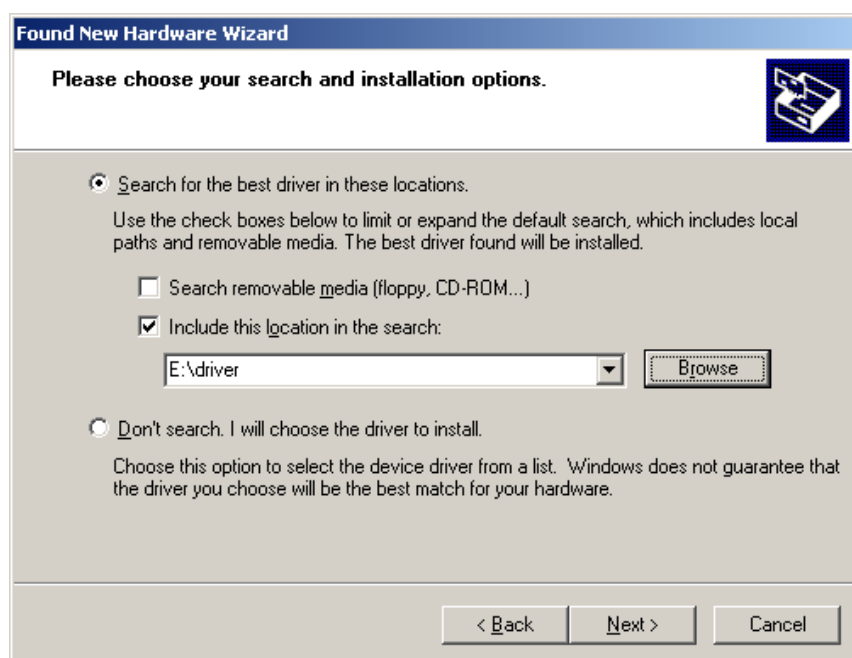
Step 1: Insert the Installation CD.

Step 2: select “Install from a list or specific location (Advanced)” in “the Found New Hardware Wizard.”



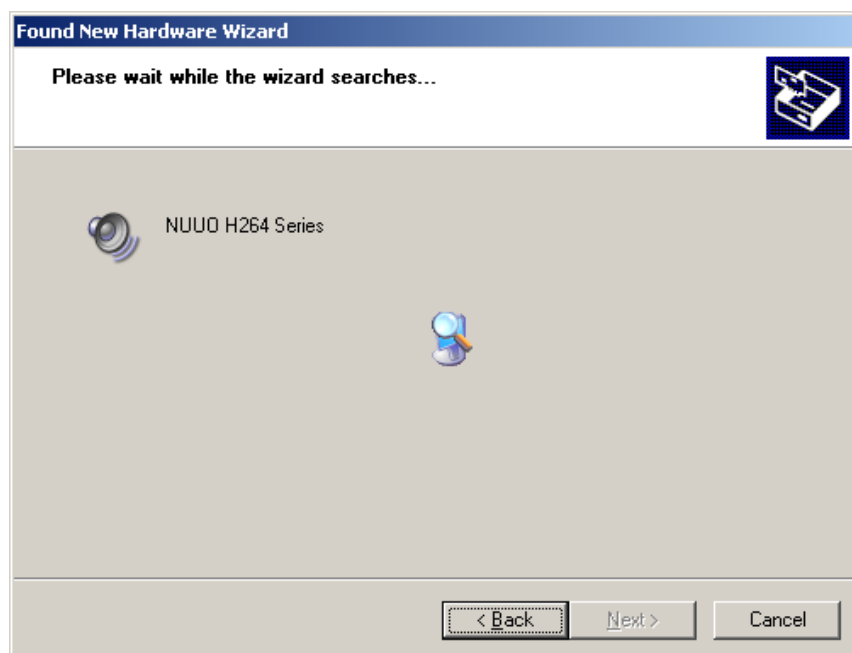
Driver Installation

Step 3: press “Browse” and select the driver from root directory \driver folder.

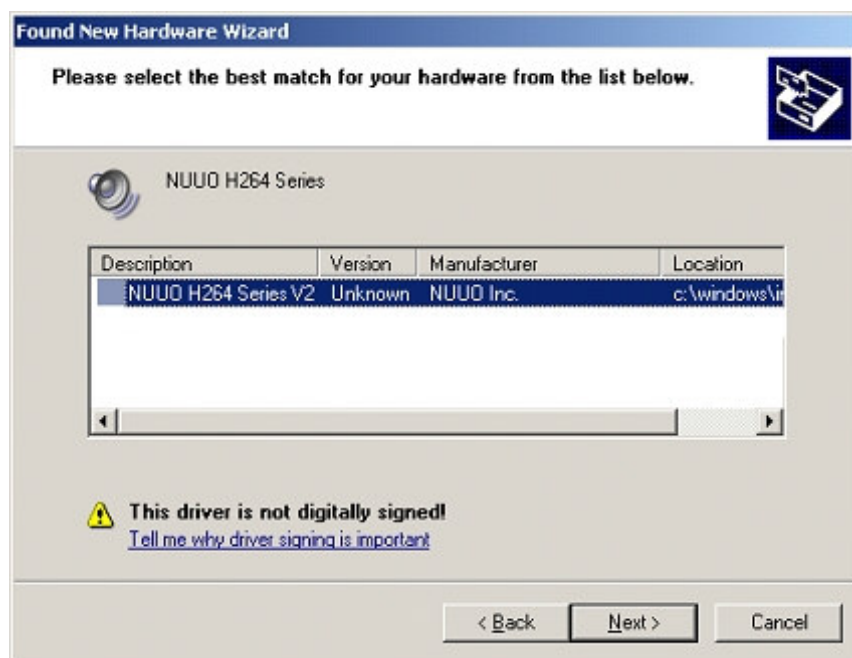


Driver Installation

Step 4: Please wait while the wizard searches...

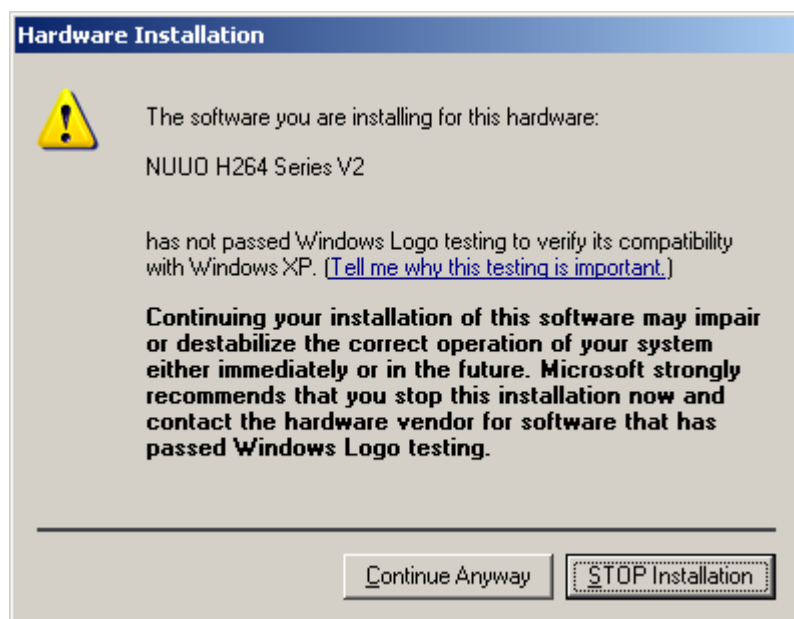


Step 5: Please select NUUO H264 Series V2

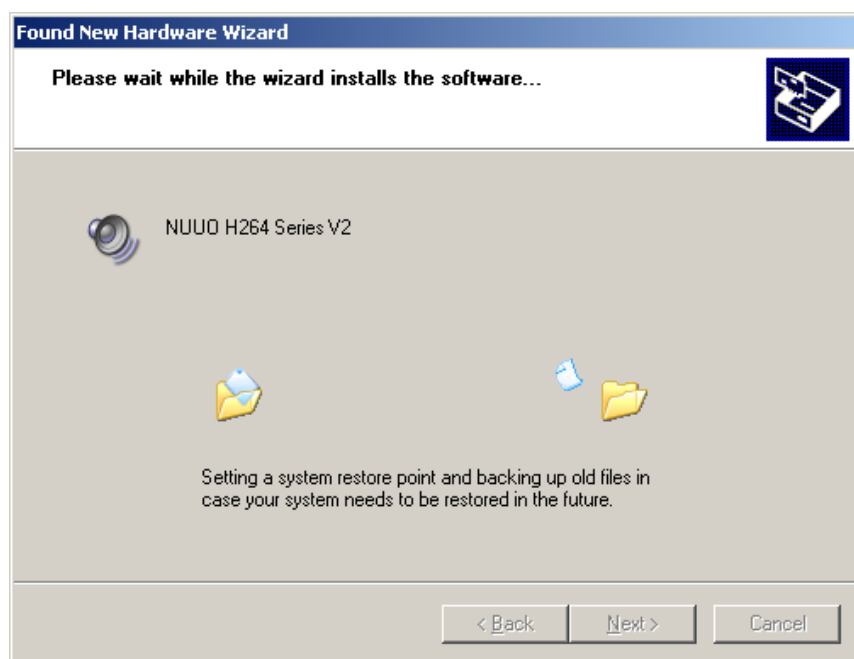


Driver Installation

Step 6: Please press "Continue Anyway."

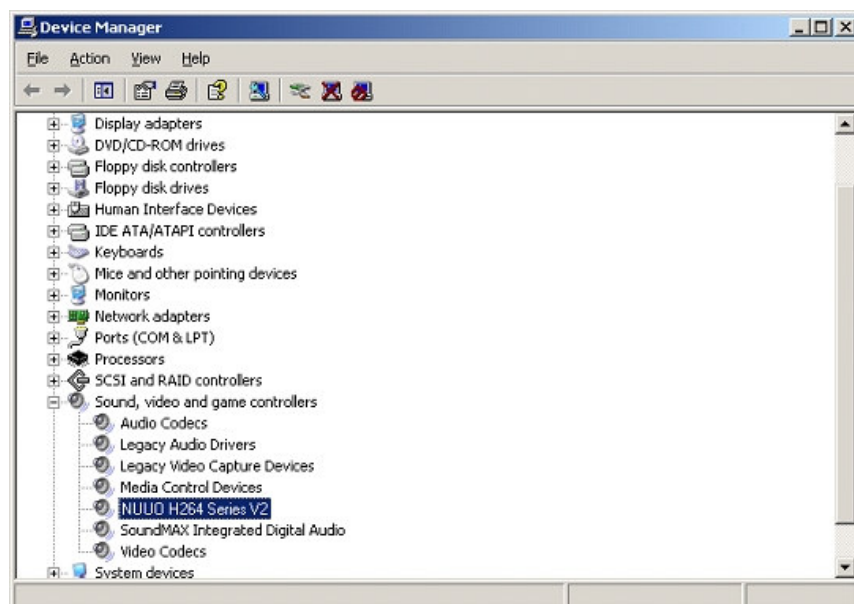
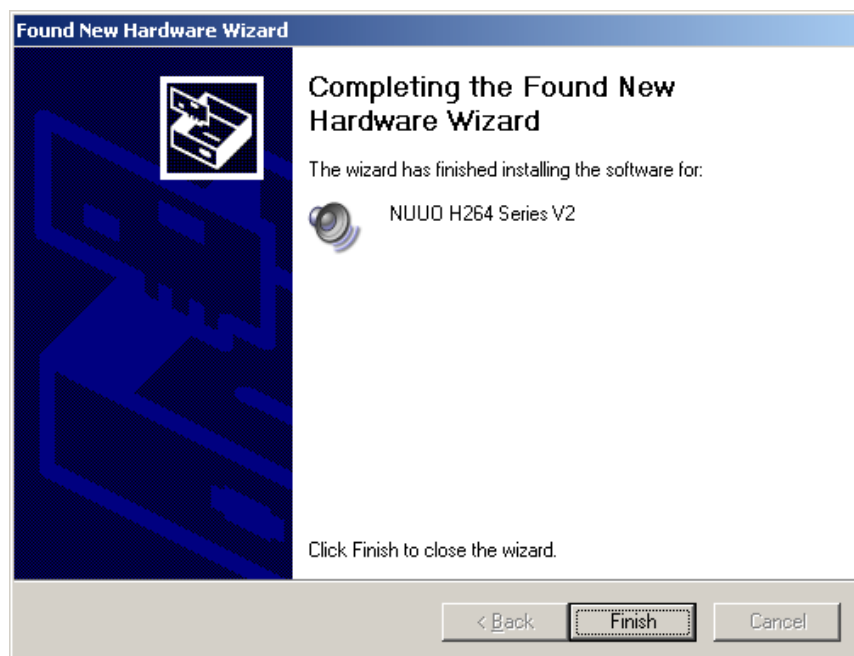


Step 7: Please wait while the wizard installs the software...



Driver Installation

Step 8: Driver Installation finish and check the device from Device Manager. You will find “NUUO H264 Series V2” in “Sound, video, and game controllers”

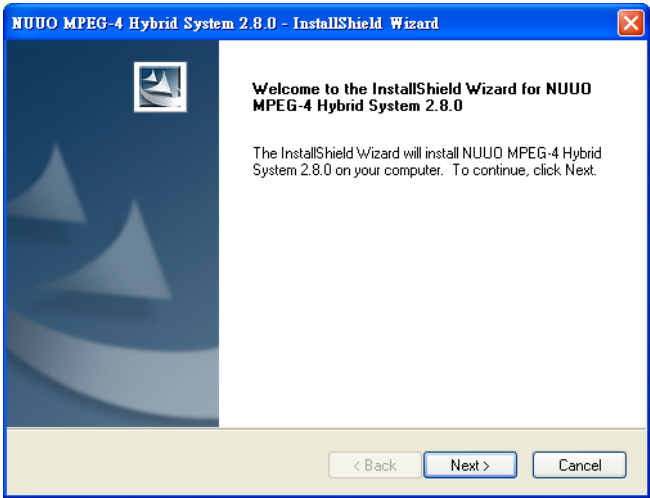


Software Installation

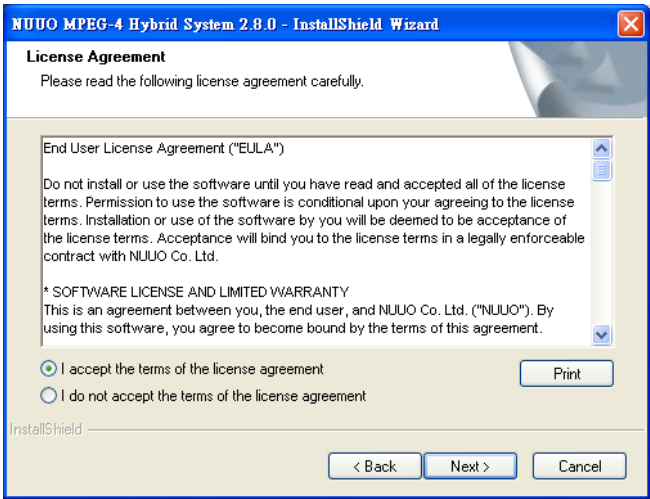
Software Installation

Step 1: Insert the Installation CD.

Step 2: Run Setup.exe from the CD-ROM directory to install.

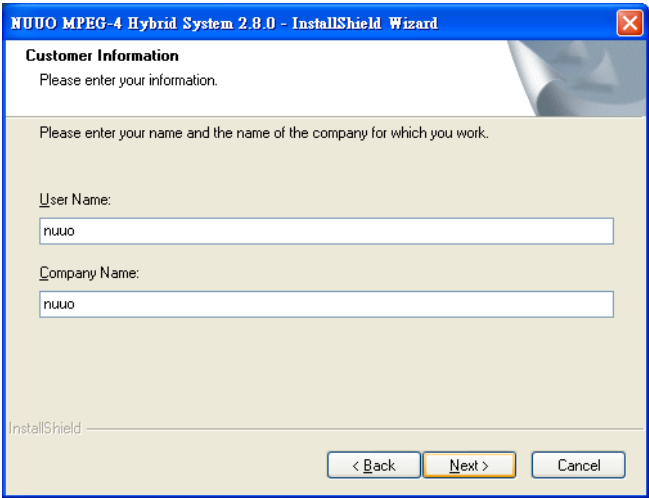


Step 3: Check the option "I accept the terms of the license agreement".



Software Installation

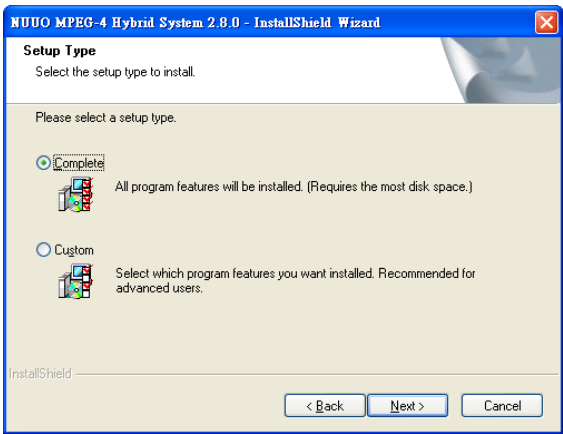
Step 4: Please enter your name and the company name for which you work.



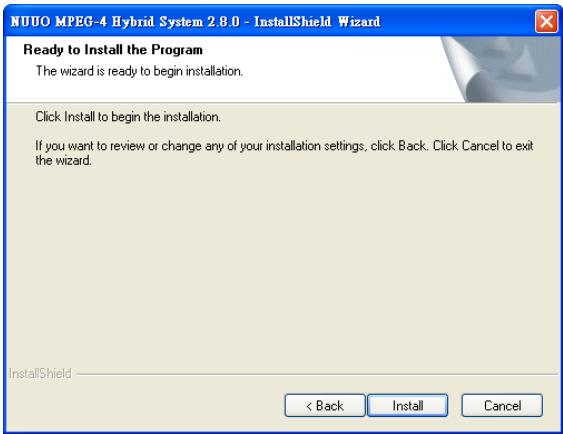
COMPLETE SETUP TYPE:

Install all program features into the default directory.

Check the option “Complete”. All program features will be installed. [Require the most disk space.]



Press the “install” to start the installation.



Software Installation
CUSTOM SETUP TYPE:

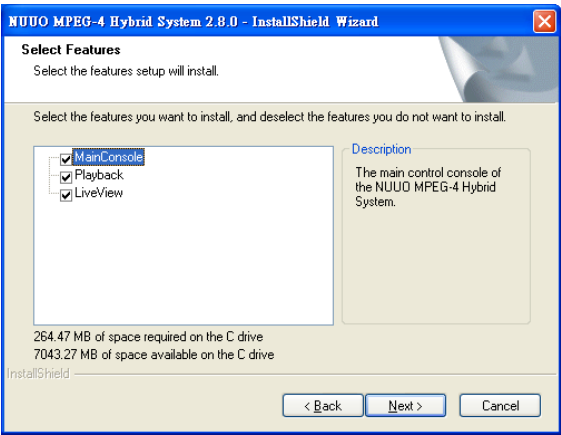
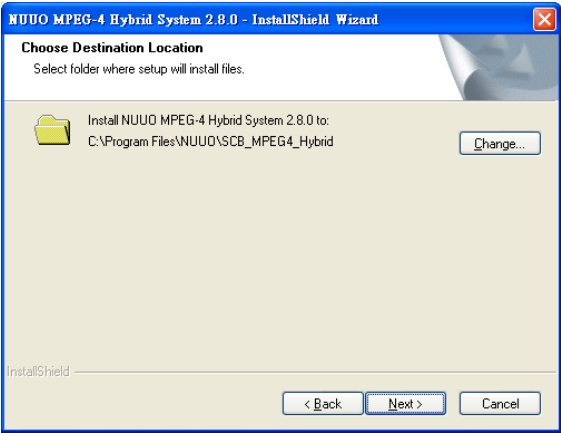
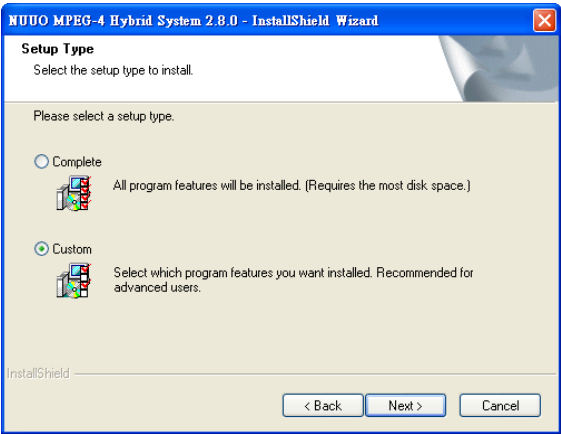
Install the system to a preferred directory. Or select whichever feature(s) you wish to install.

Check the option “Custom”.
Select which program features
you want to install. This is
recommended for advanced
users.

Select folder where setup will
install files.

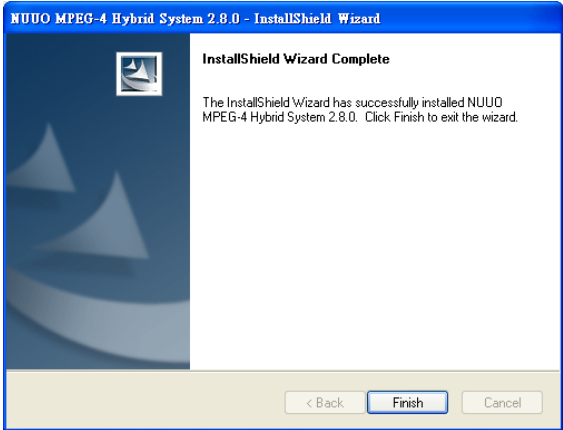
Select the features setup will
install.

Hint: For example, select only
Playback and LiveView for
installation. Install and use only
these features on multiple re-
mote sites at home or anywhere
with a PC.

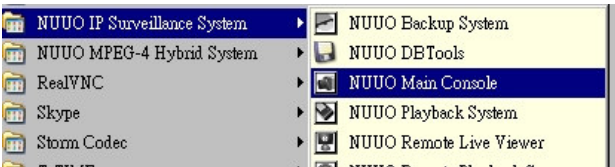


Software Installation

Press “Finish” to finish the installation.



Execute the Main Console



Enter the password you like into the edit box and enter again at the edit of Password Confirm. And then press “OK”. Now enjoy our Intelligent Surveillance Solution.



Product Specification

7000 SERIES

Product Specification

	7016	7008	7004
Display Rate	480fps(NTSC); 400fps (PAL)	240fps(NTSC); 200fps (PAL)	120fps(NTSC); 100fps (PAL)
Recording Rate (D1)	480fps(NTSC); 400fps (PAL)	240fps(NTSC); 200fps (PAL)	120fps(NTSC); 100fps (PAL)
Maximum Card	2	4	4
Video Input	16	8	4
Audio Input	16	8	4
Video Resolution	NTSC: 176x120; 352x240; 704x480		
	PAL: 176x144; 352x288; 704x576		
Compression Format	Hardware Compression H.264		

Hardware Installation

Hardware Installation

Connecting the Audio/Video Cable - referring to the figure on next page.

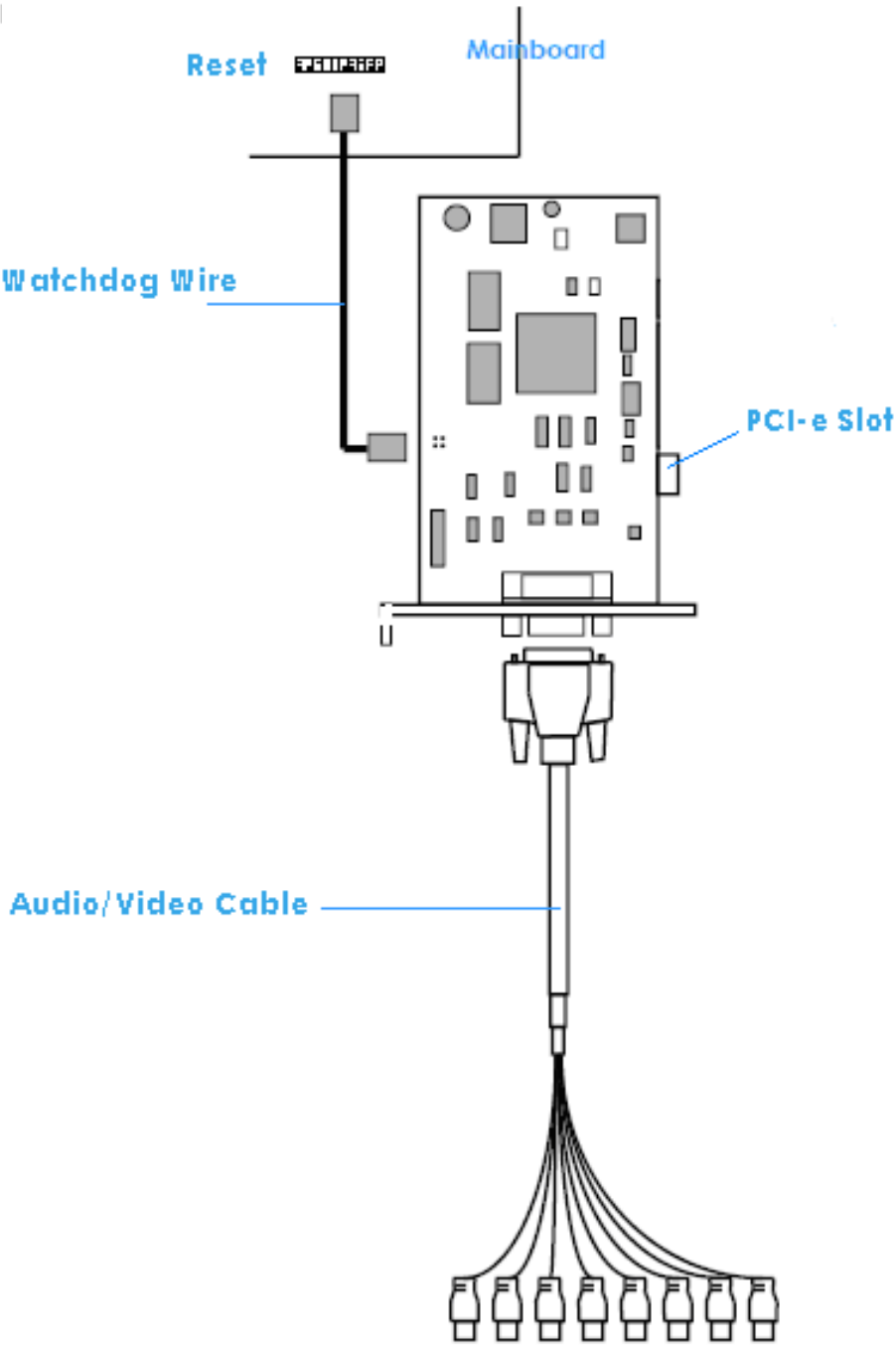
There are eight audio and eight video input connectors on the **Audio/Video Cable**. The audio input connectors are with yellow wires and marks of "A" on them (such as "A1/9"); the video input connectors are with black wires and the marks of "V" (such as "V8/16").

Connecting the Watchdog Wire - referring to the figure on next page.

Plug the **Watchdog Wire** to the **Reset** connector of the Hardware Compression Card and then connect it to the **Reset** connector on the main board.

With the **Watchdog Wire** connected, the system will be restarted if any abnormal conditions.

7000 Series Capture Card



Hardware Installation

System Requirement

	SCB-7016 x2 (960fps*)	SCB-7016 (480fps*)	SCB-7008 (240fps*)	SCB-7004 (120fps*)
CPU	Intel Core 2 Quad Q9550 **	Intel Core 2 Duo E5200 **	Intel Core 2 Duo E5200 **	Intel Core 2 Duo E5200 **
RAM	2 GB	2 GB	1 GB	1 GB
Mother- board	Intel P45 chip, ASUS motherboard recommended			
Display	ATI or nVidia chip graphic card			
Ethernet	100 BaseT or Above, Gigabit LAN Recommended			
Hard Disk	80 GB or above ***			
OS	MS Windows XP Pro SP3 / 2003/ Vista			

* FPS is based on D1 resolution.

** For more information about the system requirements of different channels, please refer to the document "System Requirements of NUUO SCB-7000 series".

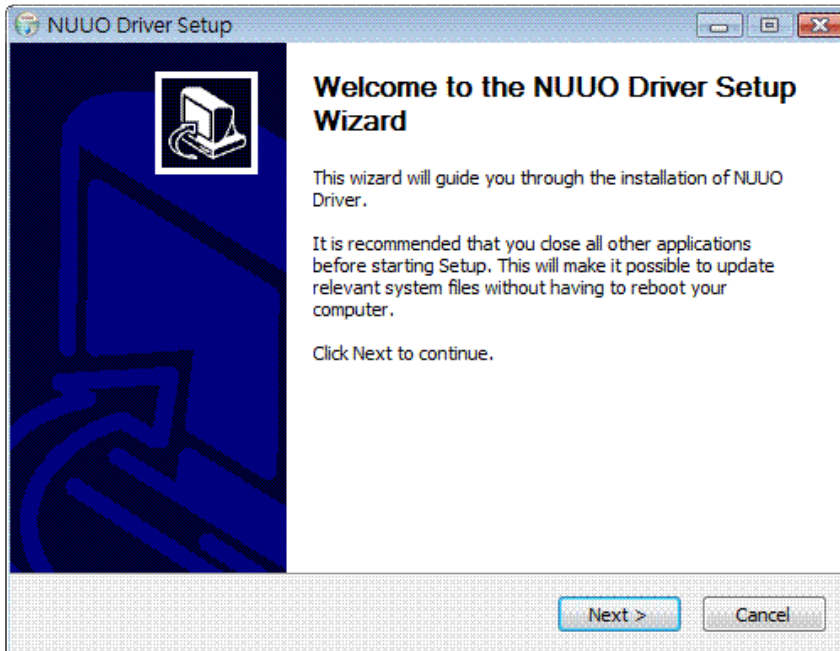
*** When setting up a system which is more than 16 channels, the throughput of the hard disk will not be enough. Build a RAID 0 system to solve this issue.

Driver Installation

Driver Installation

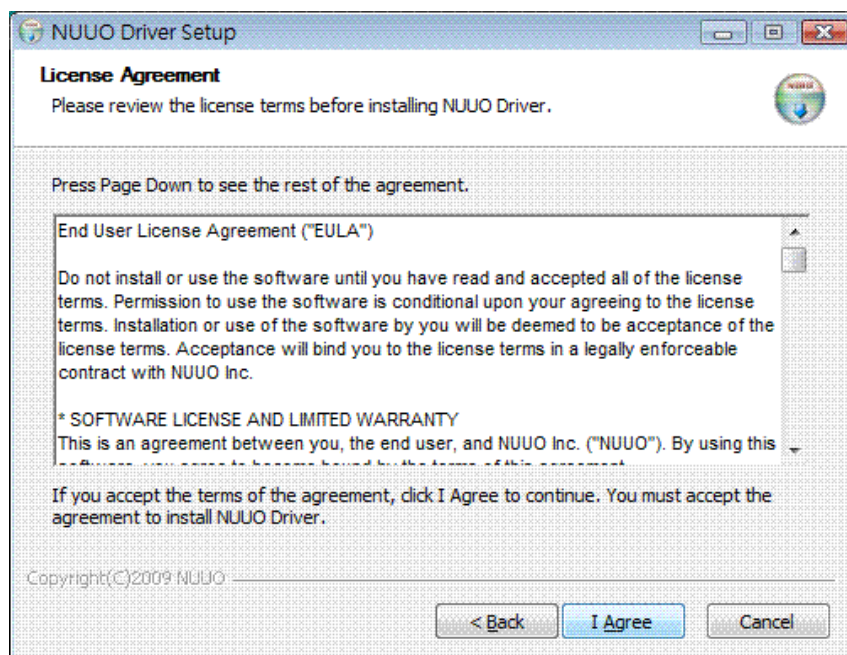
Step 1: Insert the Installation CD.

Step 2: Run InstallDri.exe (in the folder "drivers") to install. Press "Next".

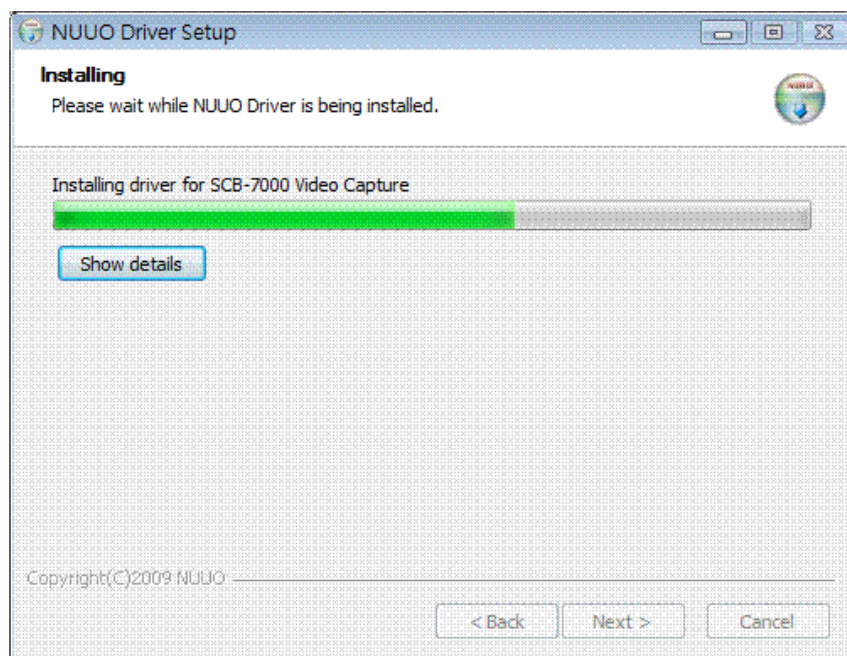


Driver Installation

Step 3: Press "I Agree" to accept license agreement.

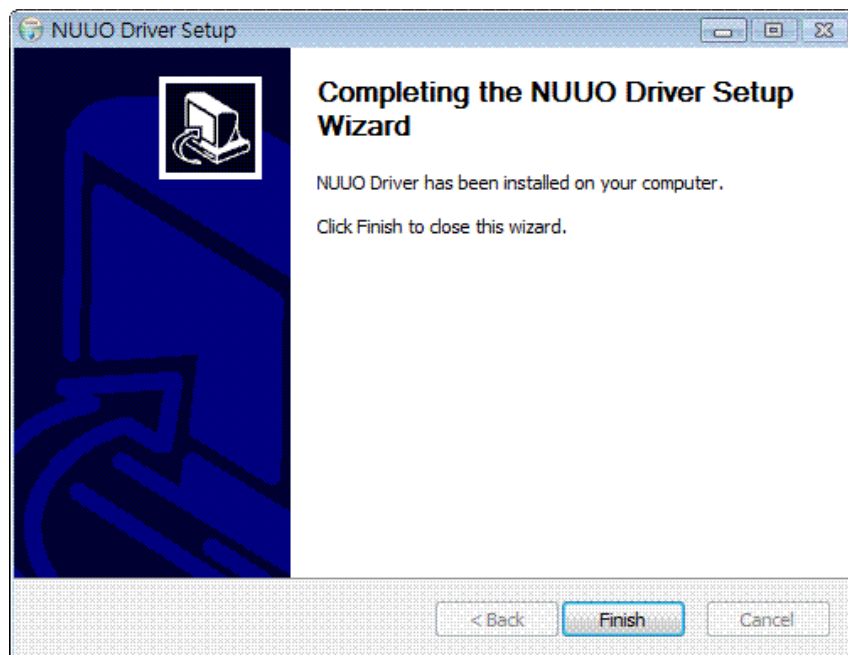


Step 4: Please wait while installing.



Driver Installation

Step 5: Press "Finish" to accomplish the driver installation.

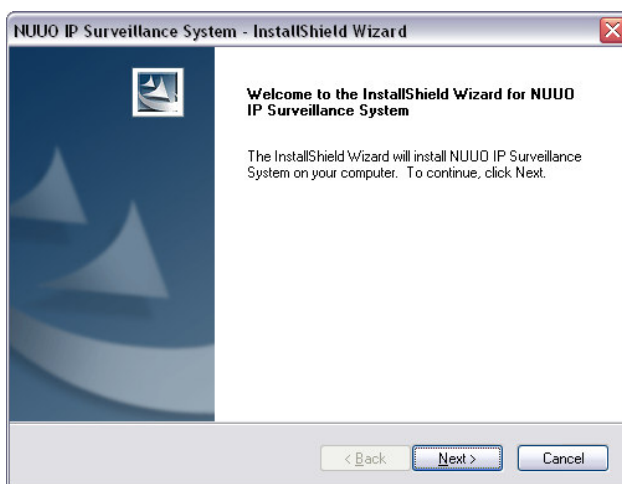


Driver Installation

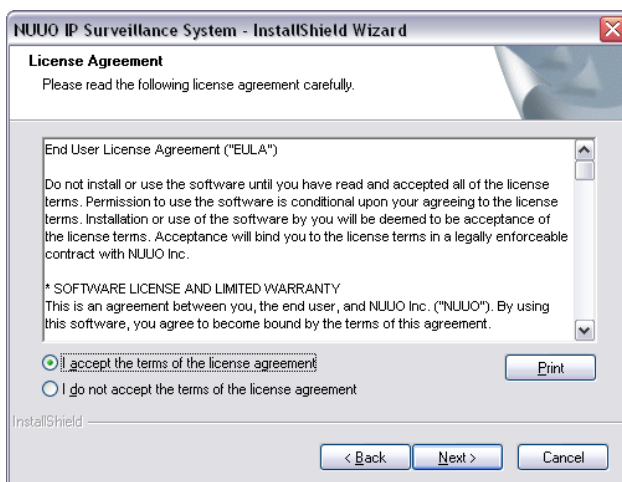
Software Installation

Step 1: Insert the Installation CD.

Step 2: Run Setup.exe from the CD-ROM directory to install.

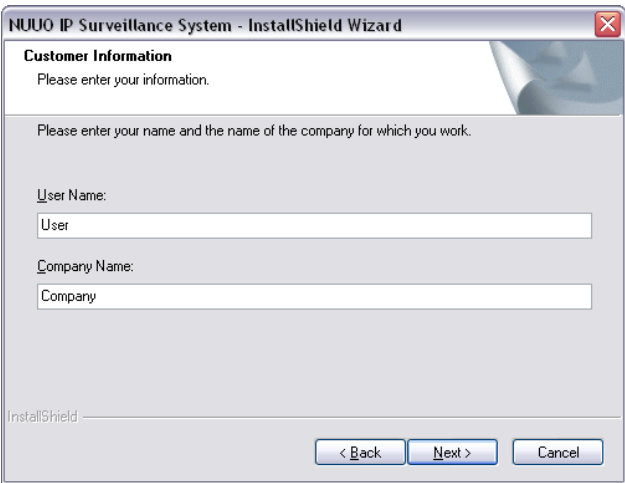


Step 3: Check the option "I accept the terms of the license agreement".



Driver Installation

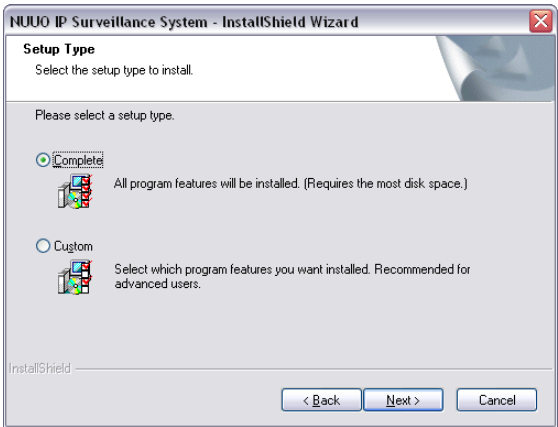
Step 4: Please enter your name and the company name for which you work.



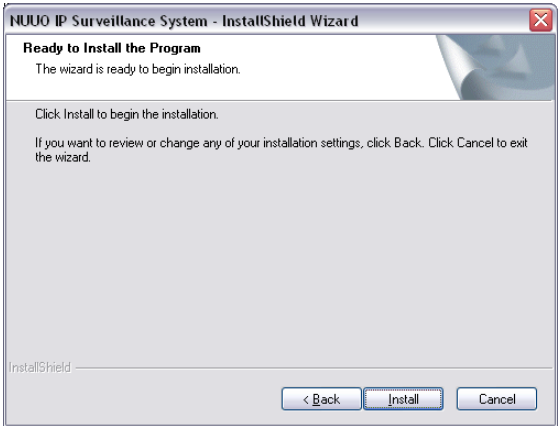
COMPLETE SETUP TYPE:

Install all program features into the default directory.

Check the option “Complete”. All program features will be installed. [Require the most disk space.]



Press the “install” to start the installation.



Driver Installation

CUSTOM SETUP TYPE:

Install the system to a preferred directory. Or select whichever feature(s) you wish to install.

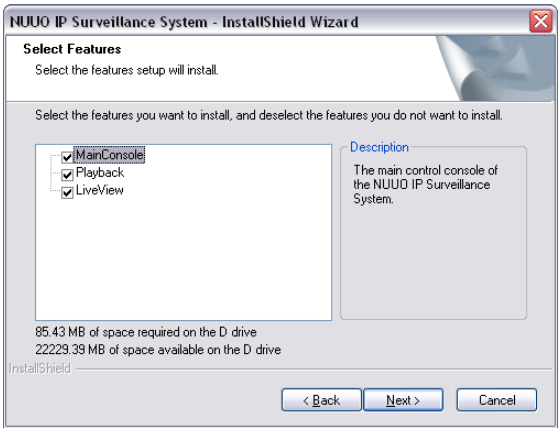
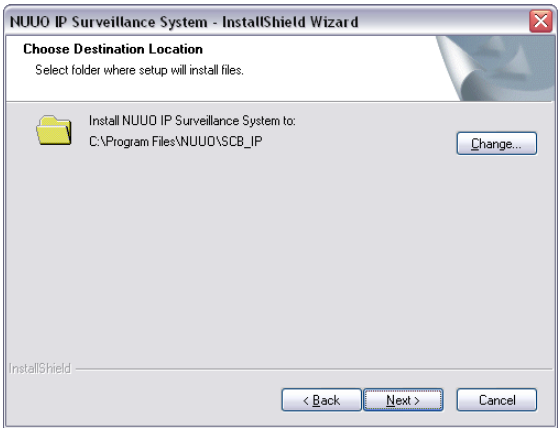
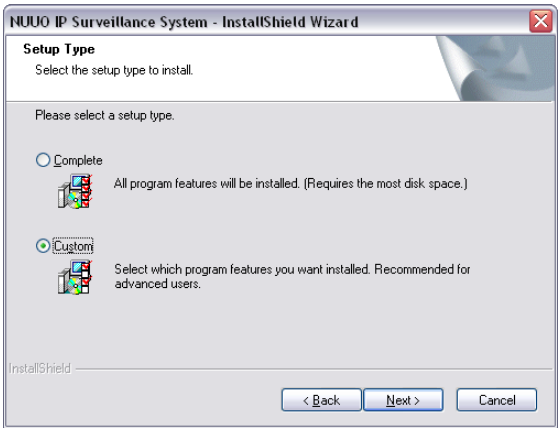
Check the option “Custom”. Select which program features you want to install. This is recommended for advanced users.

Select folder where setup will install files.

Select the features setup will install.

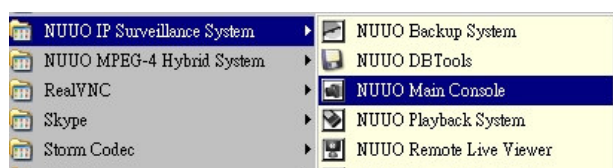
Hint: For example, select only Playback and LiveView for installation. Install and use only these features on multiple remote sites at home or anywhere with a PC.

Press “Finish” to finish the installation.



Driver Installation

Execute the Main Console



Enter the password you like into the edit box and enter again at the edit of Password Confirm. And then press "OK". Now enjoy our Intelligent Surveillance Solution.

