

## Specifications

Model	4CH
Main Processor	ARM Cortex A9 @Max. 660MHz
Operating system	Embedded LINUX
Compression	H.264
Video Input	4CH(1920×1080, 1280×960, 1280×720 etc.)
Video Output	1x HDMI, 1xVGA, Max resolution:1920x1080P/60Hz
Preview Resolution	1920x1080, 1280x1024, 1280x720, 1024x768 (Coincidence with IPC resolution, main stream for full-screen, sub-stream for split screen)
Record Resolution	1080P(1920x1080)/720P(1280x720)/D1(704x576/704x480)
Playback	1CH (Local/IE playback)
Display Split	1/4
OSD	Camera title, Time, Video loss, Motion detection, Recording
Frame Rate	PAL: 25 frames / sec; NTSC: 30 frames / sec.
Motion Detection	MD Zones: 396 ( 22 x 18 )
Ethernet	1 RJ-45 port(10/100Mbps)
Network Function	HTTP, TCP/IP, IPv4, RTSP, SMTP, NTP, DHCP, DNS, DDNS, IP Search, P2P
Smart Phone	iPhone, iPad, Android
Browser	IE8.0-11, Firefox, Google Chrome (under windows system)
Onvif Version	ONVIF2.4
Backup Mode	USB Device/Network/E-SATA
HDD	1 SATA port, up to 4TB
USB	2 ports (2 Rear), USB2.0
P2P	Support FREEIP ( <a href="http://www.freip.com">www.freip.com</a> )
Dual-Stream	Yes
Power Supply	DC5V/2A
Working Environment	-10°C~+55°C/10%~90%RH
Power Consumption	≤ 10W (Without HDD)
Dimension (W x D x H)	110*114*38mm
Weight	137g

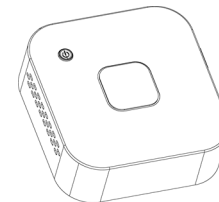
## Item List

Item	Name	Quantity
1	Mouse	1
2	CD	1
4	Power Adapter	1
5	Quick Installation Guide	1
6	Network Video Recorder	1



## Network Video Recorder

### Quick Installation Guide



Thank you for using our product, please read this manual carefully before using this equipment.  
For more please refer to the user manual in the CD packaged along with the NVR.

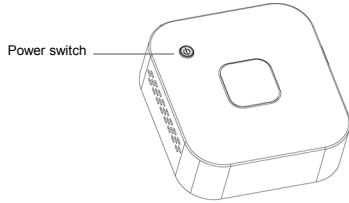
### Instructions

- ◆ Please install the device in a well ventilated place, do not block the vents of the equipment.
- ◆ Please keep equipment installed horizontally, or install equipment in a stable place, avoid the equipment falling down.
- ◆ Please keep it dry in case a short-circuit may cause fire or other hazard. This equipment is not weather proof.
- ◆ Please use the HDD as requested, buy through the regular channels, make sure the HDD quality.
- ◆ Please do not place heavy objects on it or pile up.

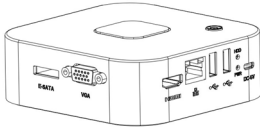
## 1. Product Appearance Introduction

**Note:** The appearance of products, including buttons, interfaces and layout are for reference only, technical parameters are subjected to the real objects.

### NVR Top Cover



### NVR Rear Panel



Interface Name	Interface Function
VGA	VGA output
HDMI	HDMI output
WAN	RJ45 Ethernet
USB 2.0	For USB Backup and Mouse
HDD	HDD Indicator. Light blink means HDD working.
PWR	Power indicator. Light blink means power is connected.
E-SATA	External Serial ATA
DC-5V	Power Input, only use DC5V power supply.

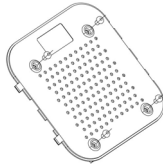
## 2. Hard Disk Installation

**Note:** This equipment, no need screws to fix the covers. Support 2.5" HDD, up to 4TB.

- ① Open covers: Two fingers at the covers card slot, reversely apart the upper and the bottom cover.
- ② Place the 2.5" HDD, pay attention to the direction .

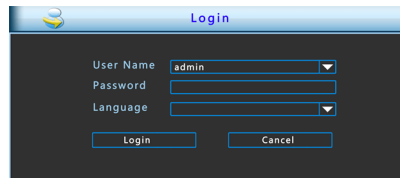


- ③ Fix the HDD with screws on bottom cover .
- ④ Close covers aiming to the card slot.



## 3.Local Access

1. Boot up NVR, right click mouse for login interface.
2. Input user name and passwords to log in NVR.(Default user: **admin** password: **12345** )



## 4.Web Access

1. Open IE, enable all ActiveX controls and plug-ins. Setting Path: Tools →Internet Options→Security →Custom Level→ActiveX controls and plug-ins.
2. Input IP address <http://192.168.1.88> and search.
3. Install OCX controls (skip this if you already install it).
4. When login interface pop up, input user name and passwords to log in NVR.(Default user: **admin** password: **12345** ).



## 5. Add IP cameras

**Notice:** Make sure the NVR and IPC are in the same LAN, but different IP address.

