

Chicago Faucets
2100 S. Clearwater Dr.
Des Plaines, IL 60018
(800) 323-5060

User Guide - HyTronic Faucet

Geberit International AG
Schachenstrasse 77
CH-8645 Jona
+41 (0) 55 221 63 00

Commander



■ GEBERIT

1.0 Overview

Geberit Commander™ software allows tool-free faucet control for the HyTronic Series Electronic Faucets. Geberit Commander's quick and easy infrared control makes troubleshooting, maintenance and operational changes easy. The patented Geberit Commander™ system uses wireless technology to communicate with the faucet to provide:

- Error diagnosis
- Maintenance scheduling
- Faucet history
- Current faucet status
- Battery information
- Ability to change faucet operating modes and ranges
- Activation of Clean, Hygiene and Smart Power Modes
- Ability to increase or decrease delay times
- Troubleshooting help
- On hand Parts List and Contact Information

1.1 Geberit Infrared Embedded Intelligence

The Geberit Infrared embedded intelligence in the faucet controls the faucet and makes it work. Geberit Infrared delivers advanced I.R. features and trouble-free electronic water control of all types, shapes and sizes in almost any environment. This new cutting-edge technology not only delivers advanced features such as digital reflection filtering and adjustable power output range, but also provides two-way interaction between Chicago Faucets Infrared-enabled appliances and the Palm-based hand-held Geberit Commander.

2.0 Getting Started

NOTE: Do not attempt to use Geberit Commander on the Palm computer under the faucet. The water will activate if you are too close to the faucet. This will damage the Palm and void your Palm warranties.

Turn the Palm on to access the **Geberit Commander** icon. If you do not see the icon, tap the **Applications** icon until you see the **Geberit Commander** icon or tap the triangle in the top right corner of the screen to display the pick list. Select **ALL** from the pick list at top right. Tap the **Geberit Commander** icon shown in Figure 1.

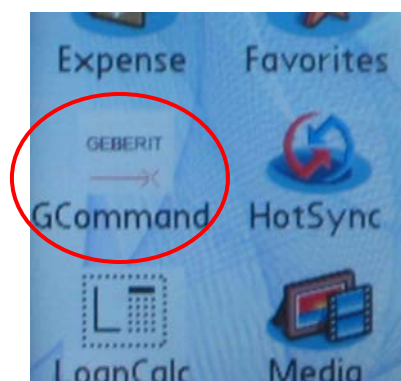


Figure 1 – Geberit Commander Icon

2.1 Communication Distance Requirements

In order to start using the Geberit Commander software you must first tap the Accept button, shown in Figure 2, indicating that you have read and agree to the license agreement published on the Chicago Faucets web page as well as on the back of this user manual.

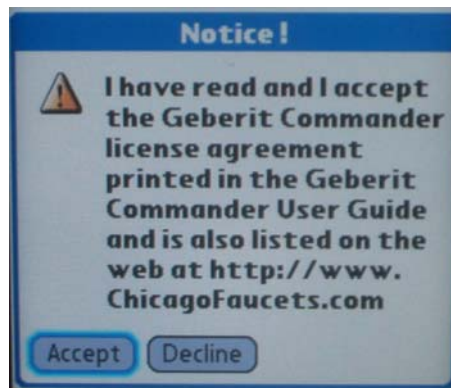


Figure 2 – License Agreement Notice

2.2 Communication Distance Requirements

The Get Faucet Data or Adjust Faucet functions work from 9-24 inches away from the faucet sensor. Fresh or charged batteries in the Palm computer optimize the communication distance.

3.0 Geberit Commander Main Menu

Scan Geberit Fitting
retrieves and stores faucet and/or flush valve data.

View Your Palm Scans
provides all previously scanned faucet and/or flush valve data without having to scan the fitting.



View General Information allows access to five different information areas for a desired product without having to scan the fitting. These areas include:

- 1) Review Palm Scans,
- 2) Contact Geberit,
- 3) Accessories,
- 4) Replacement Parts and
- 5) Troubleshooting

Quit allows the user to exit Geberit Commander Application.

Figure 3 – Geberit Commander Main Menu

4.0 Scan Geberit Fitting

Tapping the **Scan Geberit Fitting** button on the main menu initiates the data retrieval process from the faucet. The user is being notified that the scanning is in process by displaying the following scanning message (figure 4a).

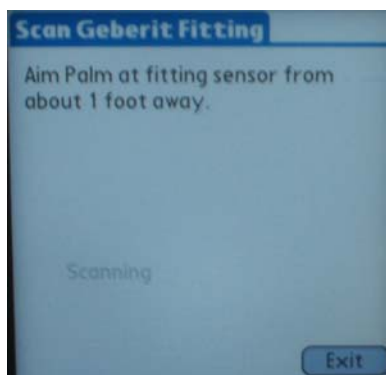


Figure 4a. Scanning in Process

If no fitting is seen in 10 sec, the Commander software will time out, prompting the user to try again (figure 4b). Adjusting the distance and angle to the faucet can provide a better chance of a complete successful scan.



Figure 4b. Scan Time Out

4.1 Get Faucet Data

Tapping the **Scan Geberit Fitting** button on the main menu retrieves all the information about the faucet you select and saves all that information to the Palm automatically. The faucet data can also be reviewed and edited.

The **Get Data Menu** displays the faucet data as shown in Figure 4c. It displays battery status, unique faucets serial number as well as the model number. After retrieving faucet information, the user is able to adjust faucets settings and parameters. Tapping on the **Scan Next** will allow the user to continue scanning other fittings and exit button will allow him to return to **Geberit Main Menu**.

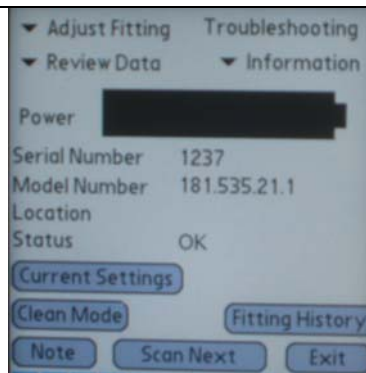


Figure 4c – Get Data Menu

4.2 Current Settings Menu

Tapping on **Current Settings** button from **Get Data Menu** the user be able to determine how the current faucet settings compare to original factory settings (Figure 4d). In addition, the user would be able to reset the unit to original factory settings or just reset the unit without affecting any of the faucet settings.

Current and Factory Settings		
Settings	Current	Factory
Operation Mode	Normal	Normal
Range Mode	Normal	Normal
Safety Shut Off	40	40
Range Offset (in)	0.00"	0.00"
Delay Time (sec)	N/A	N/A
Palm Settings Used	Yes	Yes
Manual Teach Mode	Off	Off
Beams	On On	On On
Reset To Factory Settings		Back
Reset Unit (Current Settings)		Exit

Figure 4d – Current and Factory Settings

4.2a Reset to Factory Settings

Tapping on the **Reset to Factory Settings** button will result in resetting all the faucet parameters back to original values. The **Reset Caution** screen will appear (Figure 4e) that will ask for the conformation that this is a desired operation. After the unit has been reset it will go in a calibration sequence.

Press **Reset** to continue with Resetting the faucet to Factory Settings and **Cancel** to return back.

NOTE:

The faucet will activate while in recalibration sequence!

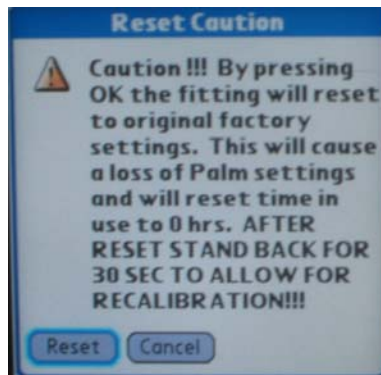


Figure 4e – Reset to Factory Caution Screen

4.2b Reset Unit

From **Current Settings Screen** if this button is activated it is for the reasons of resetting the unit and recalibrating the faucet without changing any of the settings on the unit. The **Reset Caution** screen will appear (Figure 4f) to insure that this is a desired operation.

Press **Reset** to continue with Resetting the faucet to Factory Settings and **Cancel** to return back.

NOTE:

The faucet will activate while in recalibration sequence!



Figure 4f – Reset Unit Screen

4.2c Clean Mode

From **Get Data Menu** tapping on the **Clean Mode** button will allow the user to activate this mode and disable the faucet for pre-determined amount of time. During the Clean Mode the water will not flow and the unit will indicate the Cleaning Mode by flashing the LED. Factory setting is set to 2 minutes, but the custom setting allow user to specify this time anywhere from 1 to 10 minutes. Tapping on the Set button will initiate communication with a faucet.

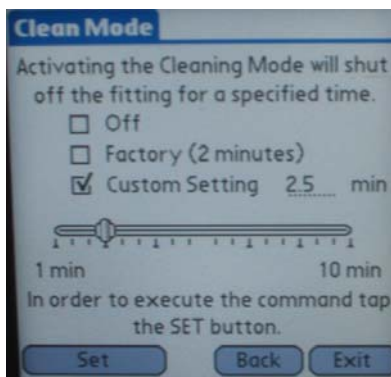


Figure 4g – Clean Mode Screen

4.2d Note Screen

If from **Get Data Menu**, the **Note** button is tapped, the user will be able to add comments regarding this particular faucet as well as the location of the installed faucet. Added comments must be followed with tapping the Save button in order for the information to remain in the Commander software.

Cancel button will take the user back to **Get Data Menu**.

Clear button will erase any existing comments, while **Restore** button will place the comments back.

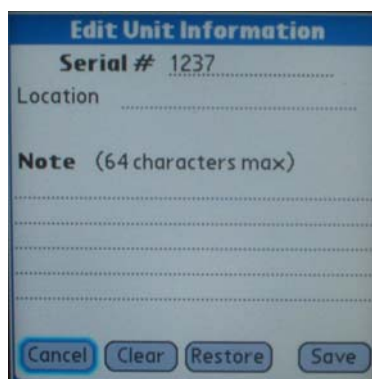


Figure 4h – Clean Mode Screen

4.2e Fitting History Menu

Tapping **Faucet History** button from **Get Data Menu** will allow user to take a look at the detailed information regarding the faucet that was scanned (entering Review Data section). By tapping on left and right arrows (< >) the user can scroll to all the previously scanned faucets. Note button will allow user to add location and comments information. Search button will allow user to search for a particular faucet scan by either serial number or location. If serial number search is used and the exact serial number is not found the software will display the closest number available in Commander data base. User can review faucet data that were grouped under 4 different tabs (**Power**, **Settings**, **Time** and **Uses**) shown in Figures 4i – 4l.

Note: The Date Scanned is taken from Palm clock. Please make sure that Palm's time is set correctly.

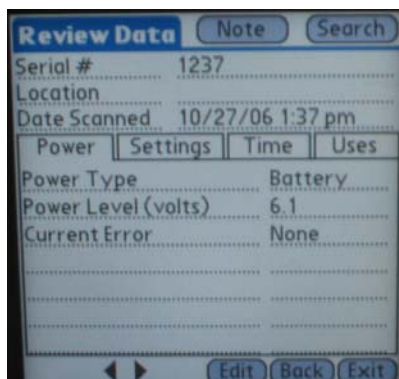


Figure 4i – Power Tab

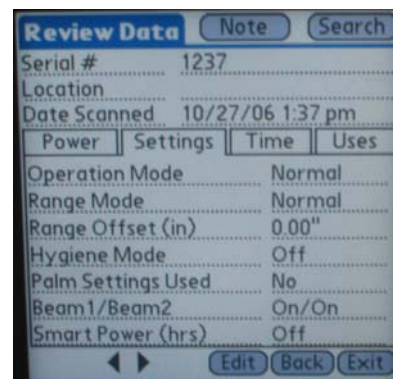


Figure 4j – Setting Tab

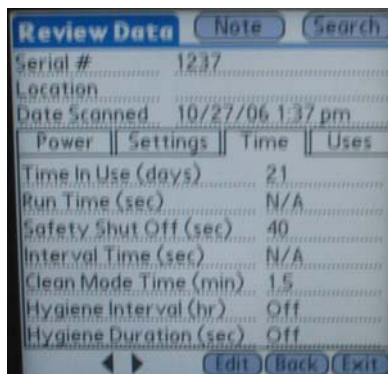


Figure 4k – Time Tab

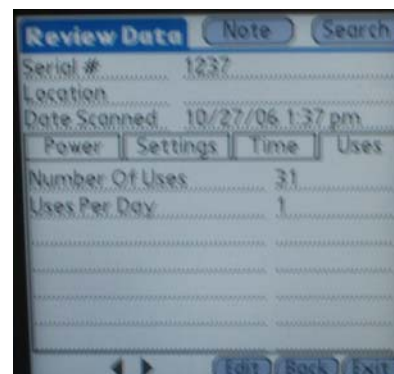


Figure 4l – Uses Tab

5.0 Adjust Fitting

Adjusting Faucet is easily done from the **Get Faucet Data Menu**.

Tap the **Adjust Fitting** button and drop down menu will appear as shown in Figure 5a. There are 3 possible options that the user can pick. **Factory Settings, Adjust Mode Settings and Adjust Sensor Settings.**

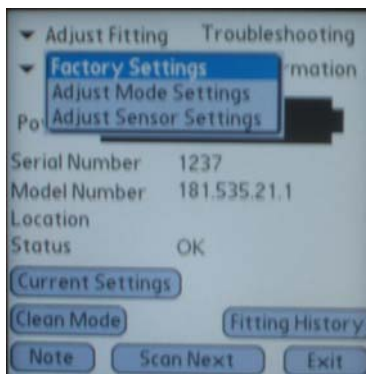


Figure 5a – Adjust Fitting Drop Down Menu

5.1 Factory Settings

Choosing this option the user will be able to evaluate and /or quickly remove any changes that were made to the faucet mode or ranges and set the unit back to factory settings. The screen is shown in Figure 5b.

Current and Factory Settings		
Settings	Current	Factory
Operation Mode	Normal	Normal
Range Mode	Normal	Normal
Safety Shut Off	40	40
Range Offset (in)	0.00"	0.00"
Delay Time (sec)	N/A	N/A
Palm Settings Used	Yes	Yes
Manual Teach Mode	Off	Off
Beams	On On	On On
Reset To Factory Settings		Back
Reset Unit (Current Settings)		Exit

Figure 5b – Factory Settings

If any of the **Reset** options is chosen the unit will recalibrate.

NOTE:

The faucet will activate while in recalibration sequence!

5.2 Adjust Mode Settings

If from **Adjust Fitting Drop Down Menu** user chooses **Adjust Mode Settings**, the **Adjust HyTronic Modes Menu** will appear (Figure 5c). This Menu allows user to activate and / or change any mode setting.

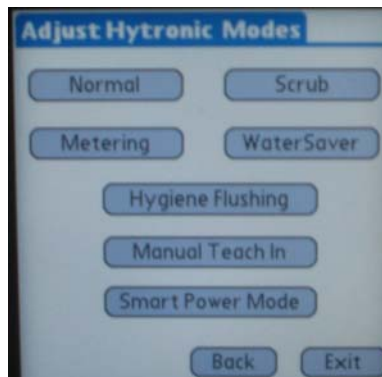


Figure 5c – Adjust HyTronic Modes Menu

5.2a Adjust Normal Mode

- **Normal mode** – water flows within 1/4 second after activating sensor (i.e., putting hands in front of window) and continues to stay on as long as hand presence is detected. Maximum factory ON time is 40 seconds. This is the factory default setting. The user can adjust Maximum Run Time by choosing the Custom Setting option and selecting the time ON in the range from 30 – 180 seconds. The time can be selected by either using the scroll bar or + / - buttons.

By tapping the set button the specified value is sent to the faucet. (Figure 5d).

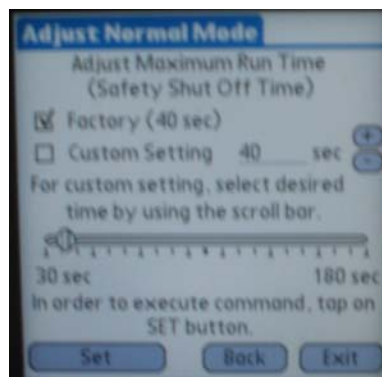


Figure 5d – Adjust Normal Mode

5.2b Adjust Scrub Mode

- **Scrub mode** – water continues to flow for 60 seconds (default) after deactivating the sensor (i.e., removing hands). Other factory-preset times are 120 and 180 seconds. Custom setting can be set to any second value between 1-180 sec.
The time can be selected by either using the scroll bar or + / - buttons.

By tapping the set button the specified value is sent to the faucet. (Figure 5e).

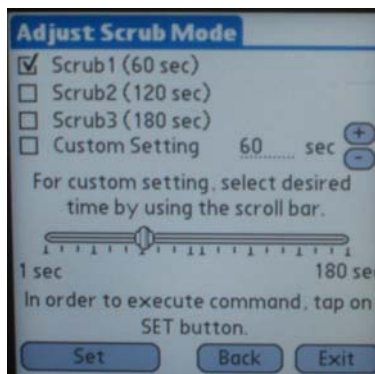


Figure 5e – Adjust Scrub Mode

5.2c Adjust Metered Mode

- **Metered mode** – the 10-second on time (default) starting from first hand detection. Custom setting can be set to any second value between 3-180 sec. Delay time 0-5 sec is the time range that the faucet user must leave detection area before another metered water flow is initiated.

The time can be selected by either using the scroll bar or + / - buttons.

By tapping the set button the specified value is sent to the faucet. (Figure 5f).



Figure 5f – Adjust Metering Mode

5.2d Adjust Water Saver Mode

- **Water Saver mode** – 10-second maximum on time starting from first hand detection and fast turnoff when hands are removed. Custom setting can be set to any second value between 3-180 sec. Delay time 0-5 sec is the time range that the faucet user must leave detection area before another metered water flow is initiated.

The time can be selected by either using the scroll bar or + / - buttons.

By tapping the set button the specified value is sent to the faucet. (Figure 5g).



Figure 5g – Adjust Water Saver Mode

5.2e Adjust Hygiene Flushing Mode

- **Hygiene mode** – if activated this mode turns on the faucet automatically after predetermined time set by the user after the last time the faucet was used. This time is determined with Interval between Activations and it ranges between 1 and 168 hours. The duration of the activation is predetermined by the user with Duration of Activation ranging anywhere 3 -180 seconds.

By tapping the set button the specified value is sent to the faucet. (Figure 5i).

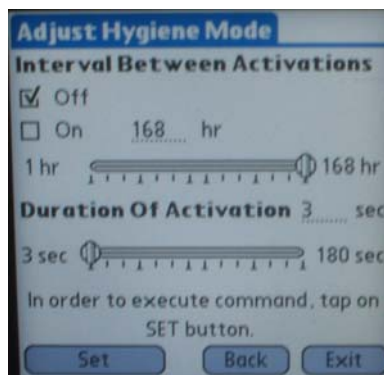


Figure 5i – Adjust Hygiene Mode

5.2f Adjust Manual Teach In Mode

- **Manual Teach In mode** – this function is factory disabled and by enabling it the user would be able to activate Clean Mode.

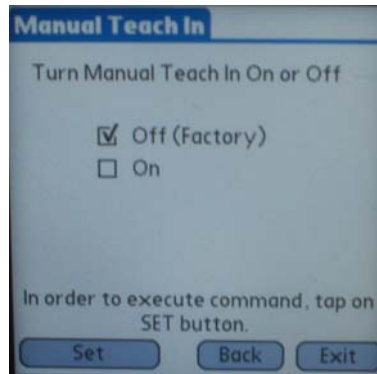


Figure 5j – Manual Teach In Mode

5.2g Adjust Smart Power Mode

- **Smart Power mode** – if activated for any user predetermined time if the faucet is not activated for that time the unit will reduce the frequency of scans from 4 times per second to 1 time per second. The unit returns back to normal operations once activated again. This conserves on battery consumption.

The time can be selected by either using the scroll bar or + / - buttons.

By tapping the set button the specified value is sent to the faucet. (Figure 5k).

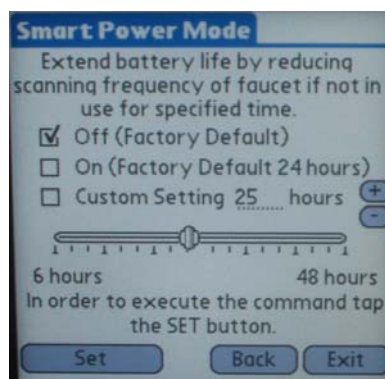


Figure 5k – Smart Power Mode

5.3 Adjust Sensor

If from **Adjust Fitting Drop Down Menu** user chooses **Adjust Sensor Settings Screen** (Figure 5I) will appear. This menu allows user to change detection sensor range between Short, Normal, Far and Maximum together in combination with offset bar (+2 to -2 inches) providing a great number of possibilities. In addition if there are any interferences from either sink or lights, mirrors the upper or the lower beam can be turned off in order to compensate.

By tapping the set button the specified value is sent to the faucet.



Figure 5I – Adjust Range Settings

6.0 Review Date

From **Get Data Screen**, the user can chose the option to review all previous scans that are stored in Commander Software. Tapping onto **Review Data pull down menu**, the user will have 3 options to review data. Sort by Scan Date sorts all the scans in Commander library of scans by the dates when the units were scanned. Sort by Serial # will sort all the previous by serial number order (low to high). Sort by location option will sort the previous scan by alphabetical order.

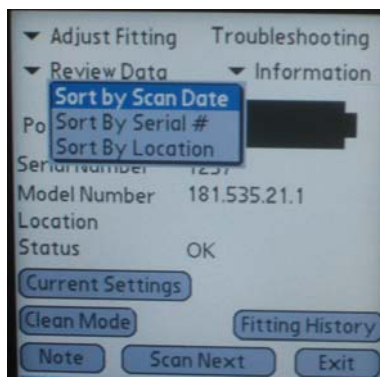


Figure 6 – Get Data Screen w/Review Data Menu

7.0 Troubleshooting

From **Get Data Screen** (Figure 7a) tap on **Troubleshooting** line and Troubleshooting Flowchart Screen will appear. Answer the question and tap on solve to get a faucet diagnostic.

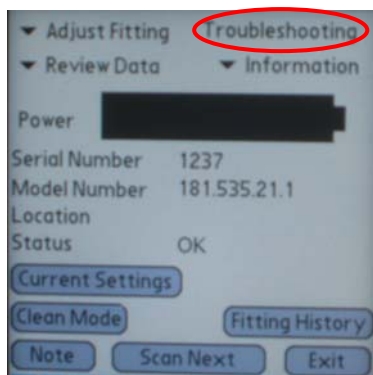


Figure 7a – Get Data Screen

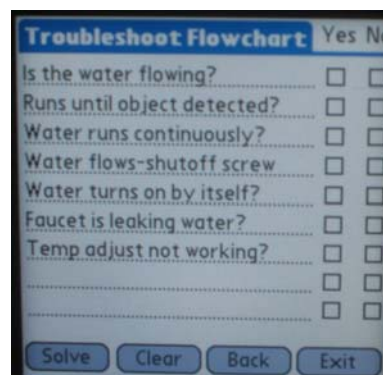


Figure 7b – Troubleshooting Screen

8.0 Information

From **Get Data Screen** tap on the **Information drop down menu** (Figure 8a). Contact Geberit (Figure 8b), HyTronic Parts List (Figure 8c) and HyTronic Accessories List screens are options that user can select.



Figure 8a – Clean Mode Screen

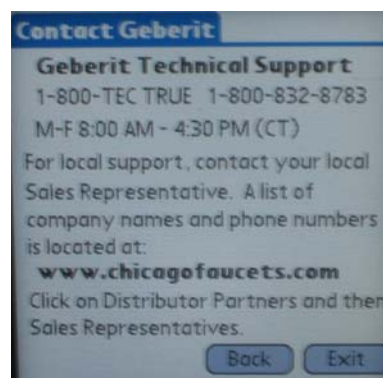


Figure 8b – Clean Mode Screen

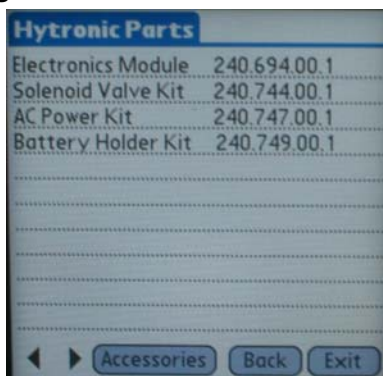


Figure 8c – Clean Mode Screen

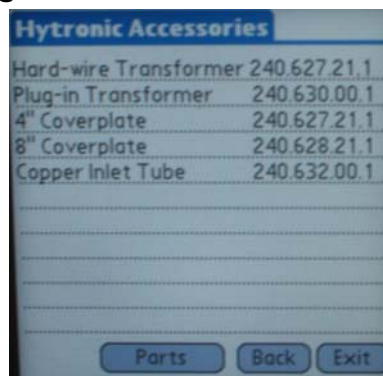


Figure 8d – Clean Mode Screen

9.0 Bypass Menu – View Palm Scans and General Information

From **Main Menu** (Figure 9a) the user is able to **Review Previously Scanned fittings** (Figure 9b), as well as access **General Information** for each product (Figure 9c) that includes Contact Geberit Information, Product Accessories and Replacement Parts Lists as well as Troubleshooting Information (Figure 9d).



Figure 9a – Main Menu

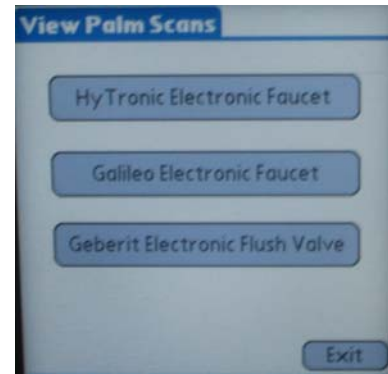


Figure 9b – View Palm Scans

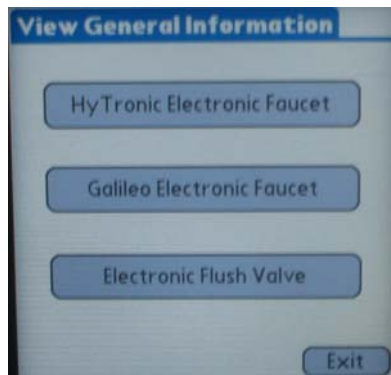


Figure 9c – View General Information

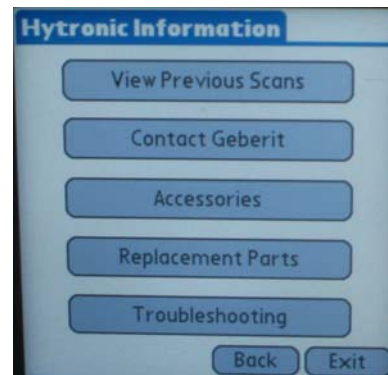


Figure 9d – Product Information

10.0 Back Up Data

It is extremely important that you follow a strict backup routine to avoid the loss of any scanned data. Your scanned faucet data is automatically backed up to your desktop computer when you HotSync. For more information on the HotSync operation, refer to the *Palm User Guide* you received with your Palm.

11.0 License Agreement

END-USER LICENSE AGREEMENT

The GEBERIT COMMANDER software (the "Software") is owned exclusively by The Chicago Faucet Company ("CFC").

You may obtain a copy of the Software by downloading the Software via the Internet from designated

download locations.

THIS END USER LICENSE AGREEMENT ("AGREEMENT") GOVERNS YOUR INSTALLATION AND USE OF THE SOFTWARE FOR FREE ON A NON-EXCLUSIVE BASIS. ACCEPTANCE OF THE TERMS OF THIS AGREEMENT DOES NOT GRANT TO YOU ANY OTHER RIGHTS NOT EXPRESSLY GRANTED IN THIS AGREEMENT AND DOES NOT CONSTITUTE A TRANSFER OF TITLE TO THE SOFTWARE TO YOU. THE SOFTWARE IS LICENSED TO YOU FOR USE UNDER THE TERMS AND CONDITIONS CONTAINED HEREIN.

YOU MUST CONSENT AND AGREE TO ALL OF THE TERMS AND CONDITIONS OF THIS AGREEMENT PRIOR TO USE OF THE SOFTWARE. PLEASE READ THIS ENTIRE AGREEMENT CAREFULLY BEFORE YOU ACCEPT THIS AGREEMENT. YOU WILL BE DEEMED TO HAVE ACCEPTED ALL OF THE TERMS AND CONDITIONS OF THIS AGREEMENT AS FOLLOWS:

- *By clicking on the "ACCEPT" button; or*
- By downloading, installing and/or using the Software.

If you do not agree to all of the terms and conditions of this Agreement you should proceed as follows:

- Click the "DO NOT ACCEPT" button; and
- Uninstall the Software from your computer hard drive and do not use the Software.

1. LICENSE GRANT

(a) License. Upon acceptance of this Agreement, and subject to your continued compliance with the terms and conditions of this Agreement, CFC grants you a limited, non-exclusive, non-transferable, terminable license to use the Software solely for internal business purposes and solely on one Designated Terminal (the "Standard License").

(b) Registration of Software. Once you have downloaded and installed the Software, you are required to register your contact information with CFC.

(c) Scope of Use. Upon registration of the Software, you may operate and store the Software in machine readable form on one CPU solely for the purposes of using the Software in accordance with this Agreement. You may also make one copy of the Software in machine-readable form solely for backup purposes provided that you reproduce all copyright and proprietary notices that are on the original copy of Software. You may also use any documentation which accompanies the Software. You agree not to modify, translate, adapt, enhance, create derivative works, reverse engineer, decompile, disassemble, network, rent, lease, or otherwise distribute or transfer, or request or assist others to modify, translate, adapt, enhance, create derivative works, reverse engineer, decompile, disassemble, network, rent, lease or otherwise distribute or transfer the Software except as expressly set forth in this Agreement.

(d) Support. CFC may provide limited customer and technical support to registered users for the then current version of the Software in its sole discretion. CFC shall have the right to reduce or modify the level of support, or discontinue support at any time without notice. CFC will have no obligation to provide support for any previous version of the Software. Nothing contained in this Agreement shall obligate or require CFC to furnish or license to you any updates, modifications, enhancements, bug fixes or derivative works of the Software.