

Quick Start Guide

Quick Start

Execute Mainconsole

Step 1: Go to **Start > All Programs > EVS_PRO > Mainconsole** to execute Mainconsole

Step 2: Enter your own password into the edit box and then Click **OK**.

Activate IP Camera License(s)

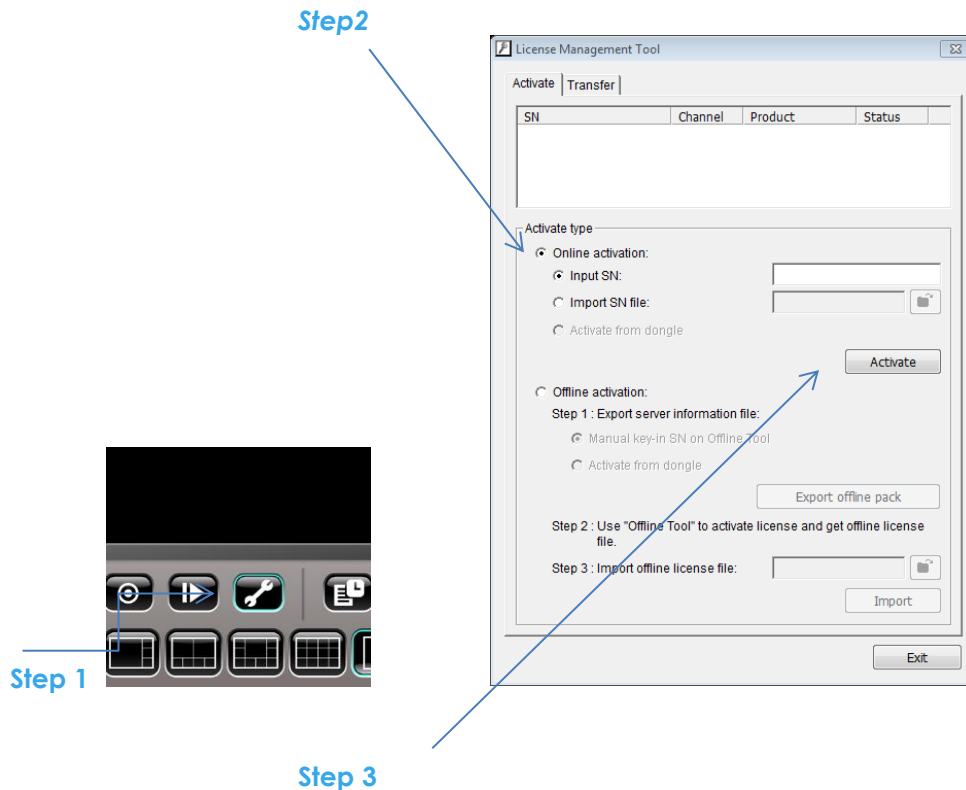
Step 1: Open License Manager Tool in **General Setting** menu.

Step 2: Select **Activate** tab, check the PC in **Online** network environment.

Step 3: Insert the SN, SN file or dongle to activate license.

Step 4: After software license is activated successfully, please restart Mainconsole.

Note: Please refer to Utilities>>License Management Tool for advanced settings.



Install IP camera(s)

Step 1: Setup the IP camera(s) by referring to the user manual provided by the IP camera manufacturer.

Step 2: Make sure you can access this camera through IE browser.

Step 3: Add the IP camera(s) to the system by following the steps below.

Add IP camera(s)

Step 1: Execute Mainconsole.

Step 2: Type in user name and password and log in to the system.

Step 3: In Mainconsole, go to **General Setting** and select **Setting>System Setting** to obtain the Setting panel.

Step 4: Go to **Camera** tab.

Note: If the IP camera supports UPnP, follow step 5. Or proceed to 8

Step 5: Click **Search** to detect IP cameras under this local area network (LAN).

Note: The Search function is available only when the IP cameras support UPnP.

Step 6: Select one of the IP cameras that are available and enter the username and password.

Step 7: Click **OK** to add the camera.

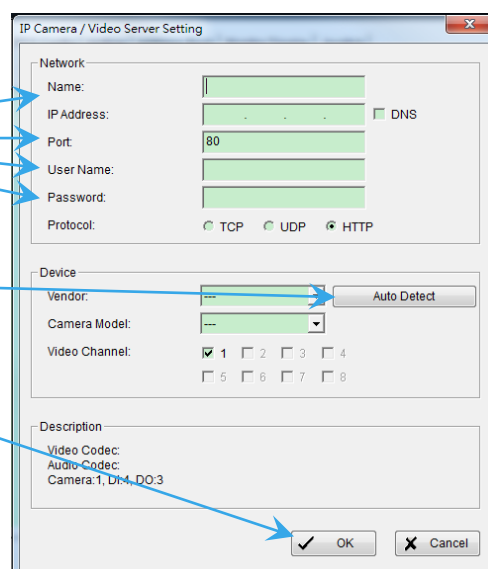
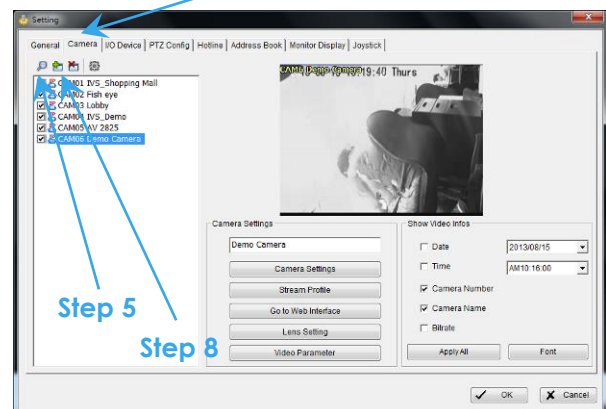
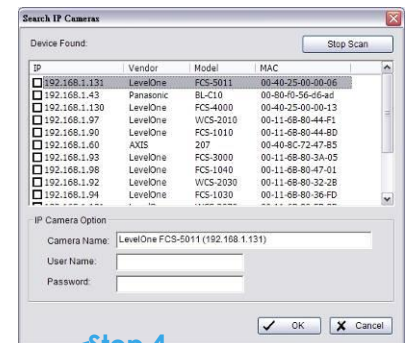
Step 8: Click **Insert** to insert the IP cameras.

Step 9: Enter the IP address or domain name (check the option), Port, Username, and Password.

Step 10: Select **Auto Detect**. Or ONVIF

Step 11: Select **OK** to add the camera.

Step 12: Select **OK** to exit.



Step 9

Step 10

Step 11

Step 12

Set Schedule

Step 1: Execute Mainconsole.

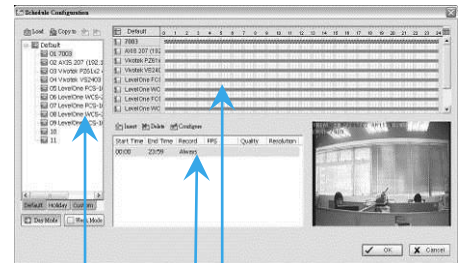
Step 2: Type in user name and password.

Step 4: The default schedule is "always record" when a camera is newly inserted.

Step 5: Choose a camera and then select **General Setting** or just double Click the schedule bar to modify the recording mode.

Step 6: Select **OK** to use the recording schedule.

Step 7: Select **OK** to go back to Mainconsole.



Step 4 **Step 5**



Step 3

Set Smart Guard

Step 1: Execute Mainconsole.

Step 2: Type in user name and password and log in the system.

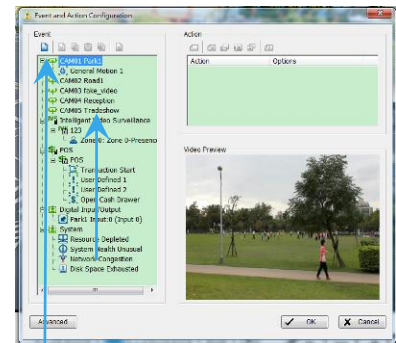
Step 3: Click **Smart Guard Configuration**.

Step 4: Select a camera and then Click **Insert Event**.

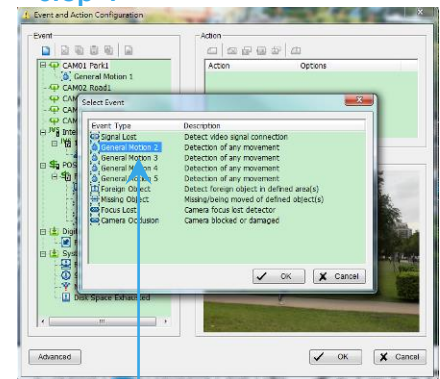
Step 5: Take "General Motion" for example, select **General Motion** as the event type and then Click **OK**.

Step 6: In **Alarm Event General Setting** panel, define your own detection zone, sensitivity and interval. After that, Click OK to save the General Setting.

Step 7: Click **OK** to go back to Mainconsole.



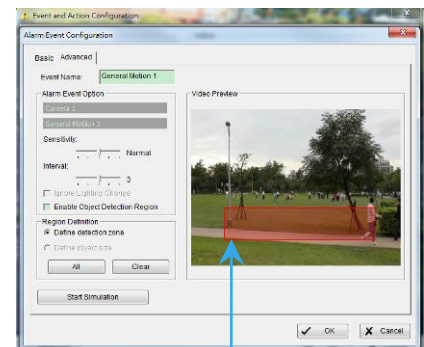
Step 4



Step 5



Step 3



Step 6

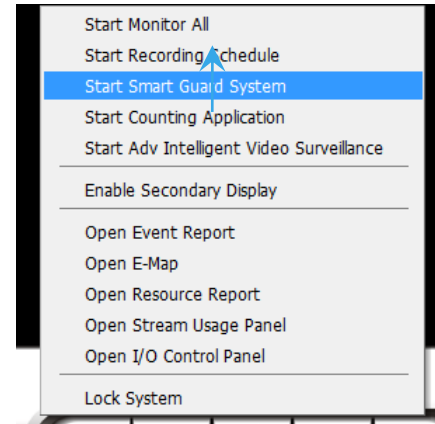
Start Recording & Smart Guard

Step 1: Execute Mainconsole.

Step 2: Type in user name and password and log in the system.

Step 3: Click **Start**.

Step 4: Click **Start Recoding Schedule** and **Start Smart Guard System** enable the two functions.



to



Step 4

Step 3

Playback

Step 1: Execute Mainconsole.

Step 2: Type in user name and password and log in the system.

Step 3: Click **Playback**.

Step 4: In Playback, Click **Date Time Search Dialog**.

Step 5: Select a specific day from the calendar, left Click mouse and drag to select a video clip to replay; user can also select multiple channels to replay at the same time.

Step 6: The recorded files are now ready to view.

Step 5 →

