

Safety Function:

SensaGuard Non-contact Interlock Switch

Products: SensaGuard Switch, GuardLogix Controller
Safety Rating: CAT. 4, PLe to EN ISO 13849-1: 2008

Important User Information

Read this document and the documents listed in the additional resources section about installation, configuration, and operation of this equipment before you install, configure, operate, or maintain this product. Users are required to familiarize themselves with installation and wiring instructions in addition to requirements of all applicable codes, laws, and standards.

Activities including installation, adjustments, putting into service, use, assembly, disassembly, and maintenance are required to be carried out by suitably trained personnel in accordance with applicable code of practice.

If this equipment is used in a manner not specified by the manufacturer, the protection provided by the equipment may be impaired.



In no event will Rockwell Automation, Inc. be responsible or liable for indirect or consequential damages resulting from the use or application of this equipment.

The examples and diagrams in this manual are included solely for illustrative purposes. Because of the many variables and requirements associated with any particular installation, Rockwell Automation, Inc. cannot assume responsibility or liability for actual use based on the examples and diagrams.




No patent liability is assumed by Rockwell Automation, Inc. with respect to use of information, circuits, equipment, or software described in this manual.

Reproduction of the contents of this manual, in whole or in part, without written permission of Rockwell Automation, Inc., is prohibited.

Throughout this manual, when necessary, we use notes to make you aware of safety considerations.

	WARNING: Identifies information about practices or circumstances that can cause an explosion in a hazardous environment, which may lead to personal injury or death, property damage, or economic loss.
	ATTENTION: Identifies information about practices or circumstances that can lead to personal injury or death, property damage, or economic loss. Attentions help you identify a hazard, avoid a hazard, and recognize the consequence.
IMPORTANT	Identifies information that is critical for successful application and understanding of the product.

Labels may also be on or inside the equipment to provide specific precautions.

	SHOCK HAZARD: Labels may be on or inside the equipment, for example, a drive or motor, to alert people that dangerous voltage may be present.
	BURN HAZARD: Labels may be on or inside the equipment, for example, a drive or motor, to alert people that surfaces may reach dangerous temperatures.
	ARC FLASH HAZARD: Labels may be on or inside the equipment, for example, a motor control center, to alert people to potential Arc Flash. Arc Flash will cause severe injury or death. Wear proper Personal Protective Equipment (PPE). Follow ALL Regulatory requirements for safe work practices and for Personal Protective Equipment (PPE).

General Safety Information

Contact Rockwell Automation to find out more about our safety risk assessment services.


IMPORTANT	This application example is for advanced users and assumes that you are trained and experienced in safety system requirements.
	ATTENTION: Perform a risk assessment to make sure all task and hazard combinations have been identified and addressed. The risk assessment can require additional circuitry to reduce the risk to a tolerable level. Safety circuits must take into consideration safety distance calculations, which are not part of the scope of this document.

Table of Contents

Important User Information	2
General Safety Information	3
Introduction	3
Safety Function Realization: Risk Assessment	4
SensaGuard Switch Safety Function.....	4
Safety Function Requirements	4
Functional Safety Description	5
Bill of Material	5
Setup and Wiring	6
Configuration	10
Programming	17
Calculation of the Performance Level.....	20
Verification and Validation Plan.....	24
Additional Resources	29

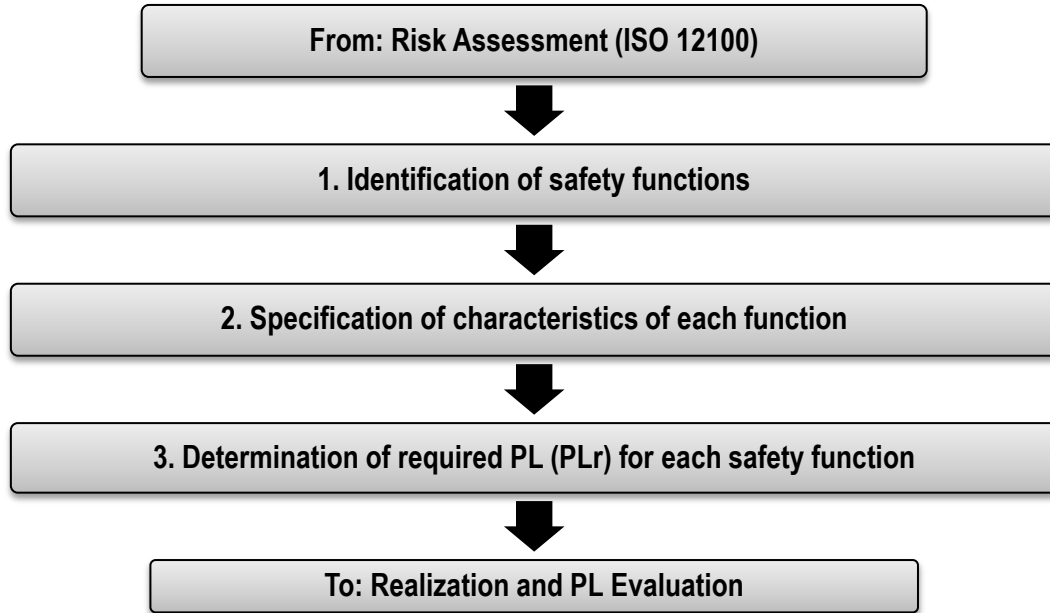
Introduction

This safety function application technique explains how to wire, configure, and program a Compact GuardLogix[®] controller and POINT Guard I/O[™] module to monitor both an E-stop button and a SensaGuard[™] switch. When the moveable door is opened, the E-stop button is actuated, or a fault is detected in the monitoring circuit, the safety controller de-energizes the final control devices, in this case, a redundant pair of 100S contactors.

This example uses a Compact GuardLogix controller, but is applicable to any GuardLogix controller. This example uses a SensaGuard switch and an E-stop button. The SISTEMA software PL calculation tool calculations shown later in this document must be re-calculated if different products are used.

Safety Function Realization: Risk Assessment

The required performance level (PLr) is the result of a risk assessment and refers to the amount of the risk reduction to be carried out by the safety-related parts of the control system. Part of the risk reduction process is to determine the safety functions of the machine. In this application, the PLr by the risk assessment is Category 3, Performance Level d (CAT. 3, PLd), for each safety function. A safety system that achieves CAT. 3, PLd, or higher, can be considered control reliable. Each safety product has its own rating and can be combined to create a safety function that meets or exceeds the PLr.



SensaGuard Switch Safety Function

The safety system described in this application has two safety functions.

- Safety-related stop function initiated by the SensaGuard switch
- Emergency stop initiated by actuation of an E-stop button

This system executes a Stop Category 0 stop. Power is removed and motion coasts to a stop.

Safety Function Requirements

When the moveable door is opened for access, the SensaGuard switch sends signals to the safety controller to de-energize outputs, stopping the hazardous motion by removing power to the motor. The system cannot be reset while the moveable door is open. Once the door is closed, and the Reset button is pressed and released (a separate action), the electrical circuit is re-established and the machine is ready to start.

Pressing the E-stop button stops the hazardous motion by removing power to the motor by the use of two safety contactors. Releasing the E-stop button does not restart the hazardous motion. Pressing and releasing the Reset button after the E-stop button has been reset and all faults are cleared, prepares the machine for

normal operation (ready to run). The machine runs after the Start button is pressed. A fault at the SensaGuard switch, E-stop, wiring terminals, or safety controller is detected before the next safety demand.

The safety system described in this application technique is capable of connecting and interrupting power to motors rated up to 9 A, 600V AC. The safety functions in this application technique each meet or exceed the requirements for Category 3, Performance Level d (CAT. 3, PLd), per EN ISO 13849-1 and control reliable operation per ANSI B11.19.

Functional Safety Description

The SensaGuard switch and the E-stop button are wired to pairs of safety inputs of a safety input module (SI1). The safety contactors (K1 and K2) are connected to a pair of safety outputs of a safety output module (SO1). The I/O module is connected, via CIP Safety, over an EtherNet/IP network to the safety controller (SC1). The safety code in SC1 monitors the status of the SensaGuard switch and E-stop button by using the pre-certified safety instruction Dual Channel Input Stop (DCS). When all safety input interlocks are satisfied, no faults are detected, and the Reset button is pressed and released, a second pre-certified function block called Configurable Redundant Output (CROUT) controls and monitors feedback for a pair of 100S redundant contactors.

Bill of Material

This application uses these products.

Cat. No.	Description	Quantity
440N-Z21SS2HN ¹	SensaGuard, plastic rectangular, 2 x PNP, 0.2 A, max., safety output, 6 in. pigtail, 8-pin micro (M12), margin indication	1
889D-F8AB-2	DC micro (M12), female, straight, 8-pin, PVC cable, yellow, unshielded, 24AWG, 2 m	1
800FM-G611MX10	800F push button - metal, guarded, blue, R, metal latch mount, 1 N.O. contact, standard	1
800FP-MT44PX02S	800F non-illuminated mushroom operators, twist-to-release, 40 mm, round, plastic, red, plastic latch mount, 0 N.O. contacts, 2 N.C. contacts, self-monitoring	1
800F-1YP3	800F 1-hole enclosure E-stop station, plastic, PG twist-to-release 40 mm, non-illuminated, 2 N.C. contacts	1
100S-C09EJ23C	Bulletin 100S-C - safety contactors, 9 A, 24V DC	2
1768-ENBT	CompactLogix™ EtherNet/IP bridge module	1
1768-L43S	Compact GuardLogix processor, 2.0 Mb standard memory, 0.5 Mb safety memory	1
1768-PA3	Power supply, 120/240V AC input, 3.5 A@ 24V DC	1
1769-ECR	Right end cap/terminator	1
1734-AENT	24V DC Ethernet adapter	1
1734-TB	Module base with removable IEC screw terminals	4
1734-IB8S	POINT Guard I/O safety input module	1
1734-OB8S	POINT Guard I/O safety output module	1
1783-US05T	Stratix 2000™ unmanaged Ethernet switch	1

¹ Any 440N-Z SensaGuard product can be used in this application.

Setup and Wiring

For detailed information on installing and wiring, refer to the product manuals listed in the [Additional Resources](#).

System Overview

The 1734-IB8S input module monitors two output signal switching devices (OSSD) from the SensaGuard switch. If the moveable door is opened, the SensaGuard switch turns off its two PNP outputs (OSSD Safety A and OSSD Safety B) and the safety controller reacts by turning off the two safety outputs. This removes 24V DC from the coils of the two safety contactors whose contacts open, removing power to the motor. The motor coasts to a stop (Stop Category 0).

The SensaGuard switch OSSD outputs (Safety A and Safety B) turn on once the door is closed. The SensaGuard switch monitors its internal circuitry and its OSSD outputs for faults. When a fault in the internal circuitry or an output is detected, the SensaGuard switch responds by turning off its OSSD outputs.

The pulse-test outputs (T0 and T1) wired to the 1734-IB8S input module are run through the two N.C. contacts of the E-stop to inputs I2 and I3, respectively. When the E-stop is pressed and released, these circuits are interrupted. The safety controller reacts by turning the safety contacts off. This removes power from the 100S contactor coils and removing 24V DC from the coils of the two 100S contactors, whose contacts open, removing power to the motor. The motor coasts to a stop (Stop Category 0).

Shorts to 0V DC (and wire off) are seen as an open circuit by the 1734-IB8S input module and the safety controller reacts by dropping out the safety contactors. If the inputs remain discrepant for longer than the discrepancy time, then the function block Dual Channel Input Stop (DCS) in the safety controller declares a fault. Only after the fault is cleared and the SensaGuard switch or E-stop inputs are cycled (door opened, then closed or push and release the button), is the function block reset.

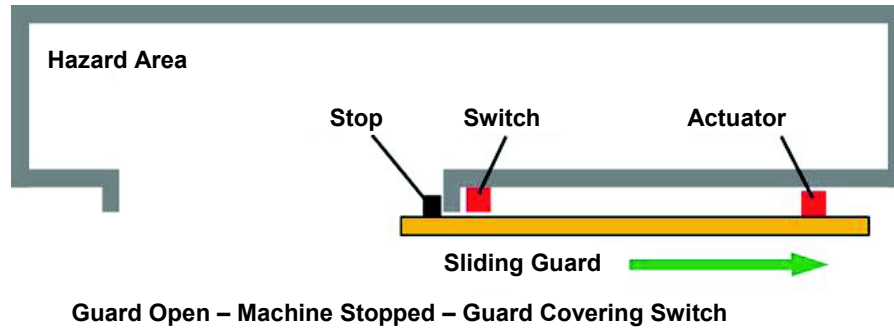
The final control devices are a pair of 100S safety contactors, K1 and K2. The contactors are controlled by a 1734-OB8S safety output module. The contactors are wired in a redundant series configuration. A feedback circuit is wired through the N.C. contacts and back to an input on the 1734-IB8S, to monitor the contactors for proper operation. The contactors cannot restart if the feedback circuit is not in the correct state.

The system has individual Reset buttons for resetting faults and safety outputs. The Reset buttons and the two contactor feedbacks circuit are all wired to the 1734-IB8S module in this example. This is not required for functional safety. These three inputs can be wired to a standard input module.

Installation

Refer to the installation instruction and user manuals for guidance on installing and maintaining the different parts of this system.

The size of the openings must prevent the operator from reaching the hazard. Table O-10 in U.S. OSHA 1910.217 (f) (4), EN ISO 13854, Table D-1 of ANSI B11.19, Table 3 in CSA Z432, and AS4024.1, provide guidance on the appropriate distance a specific opening must be from the hazard.



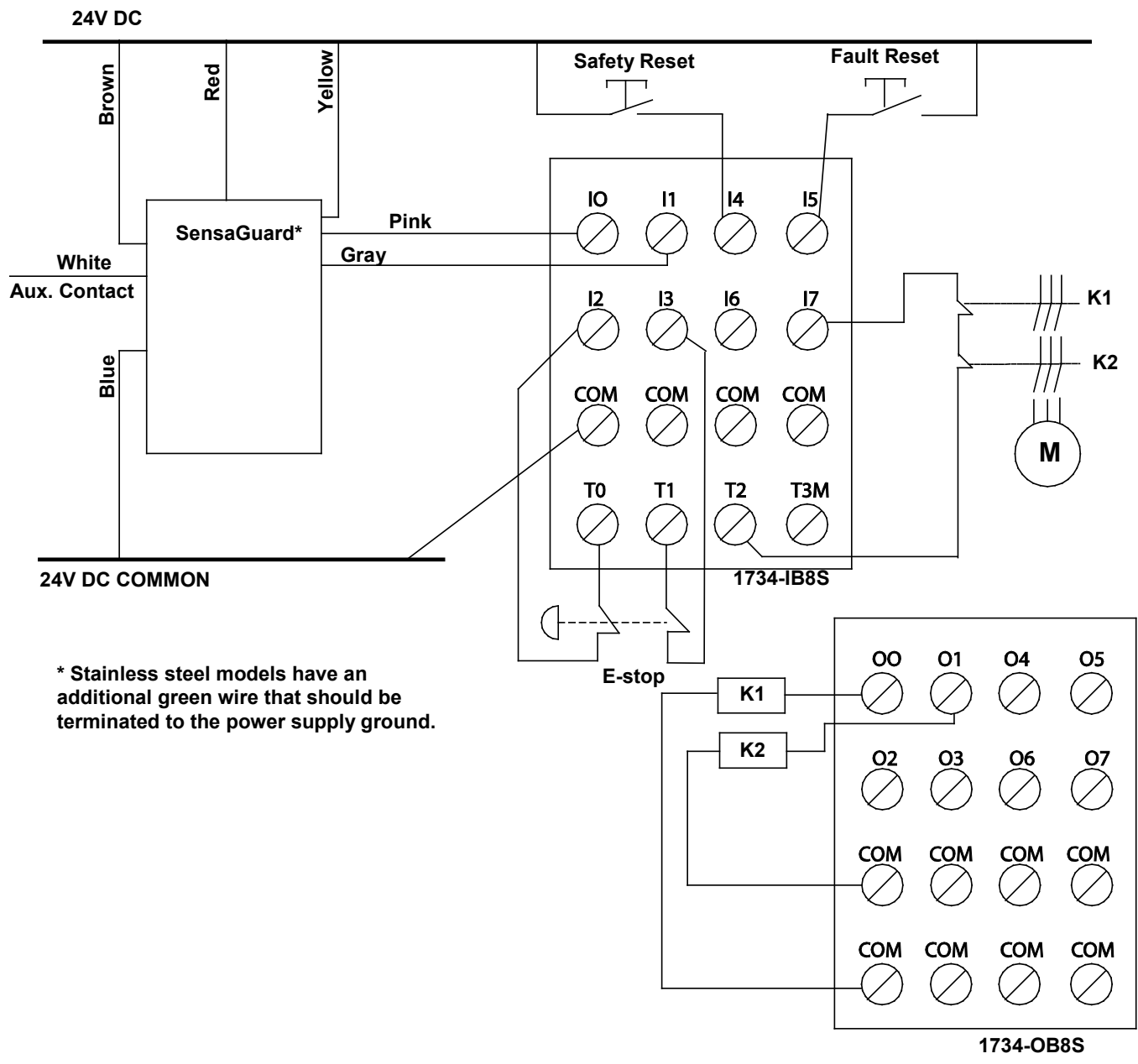
RFID Non-Contact Interlock Switches

Non-contact interlock switches based on Radio Frequency Identification (RFID) technology can provide a very high level of security against defeat by simple tools. This technology can also be used to provide devices with unique coding for applications where security is paramount.

The use of RFID technology has many other important advantages. RFID technology is suitable for use with high-integrity circuit architectures, such as Category 4, Performance Level e, or SIL 3. RFID technology can be incorporated into devices with fully-sealed IP69K enclosures manufactured from plastic or stainless steel.

When RFID technology is used for coding, and inductive technology for sensing, a large sensing range and tolerance to misalignment can be achieved, typically 15...25 mm. This means that these devices can provide very stable and reliable service combined with high levels of integrity and security over a wide range of industrial safety applications. The SensaGuard switch interlocks use RFID technology.

Electrical Schematic



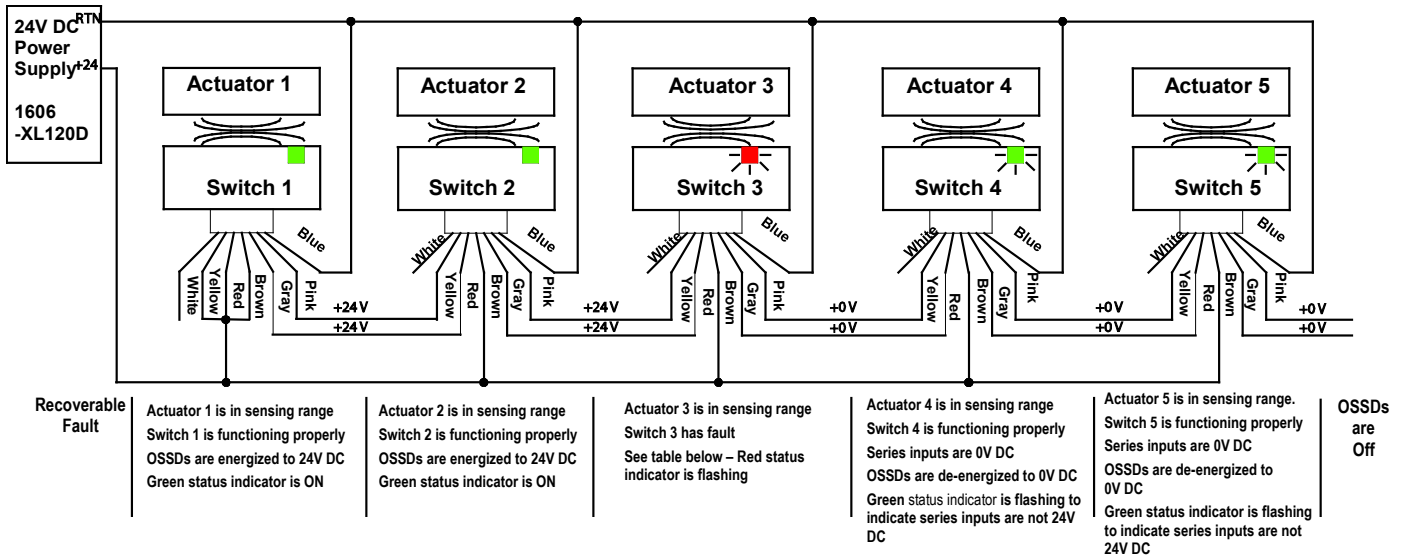
* Stainless steel models have an additional green wire that should be terminated to the power supply ground.

Typical Wiring Diagrams

Description		Plastic	Stainless Steel
8-pin Micro (M12)			
8-pin Cordset 889D-F8AB- ¹ or cable version	Gray	Safety A	Safety A
	Red	Safety A+	Safety A+
	Pink	Safety B	Safety B
	Yellow	Safety B+	Safety B+
	White	Aux A	Aux A
	Brown	24V DC+	24V DC+
	Blue	Gnd	Gnd
	Green ²	NA	Shield

¹ Replace symbol with 2 (2 m), 5 (5 m), or 10 (10 m) for standard cable lengths.

² Green wire only applies to the stainless steel model.



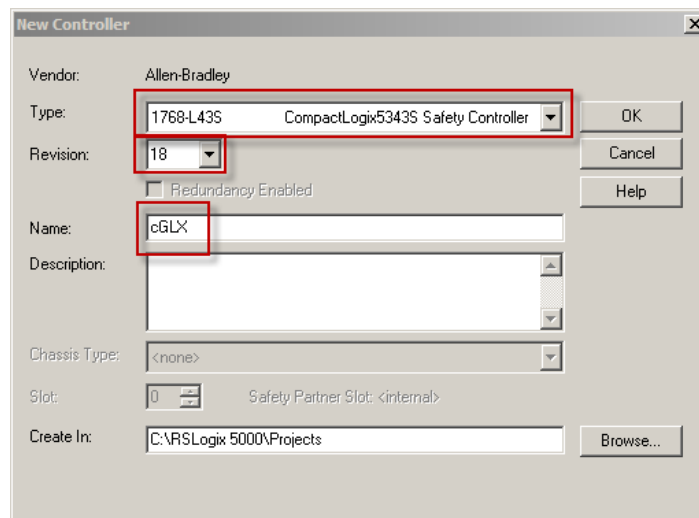
Status Indicators

	State	Status	Troubleshooting
Device Output Status Indicator	Off	Not Powered	NA
	Red	Not Safe, Output Off	NA
	Green	Safe, Output On	NA
	Green Flashing	Power-up Test	Check 24V DC on safety + outputs (yellow and red wire)
	Red Flashing	1 Hz Flash Recoverable Fault 4 Hz Flash Nonrecoverable Fault	Recoverable Fault: Check that safety outputs are not shorted to GND, 24V DC, or each other. Cycle power.
	Amber Flashing	Safe, output on, sensor is reaching maximum sensing distance	Readjust the distance between the actuator and the sensor until output status is green.

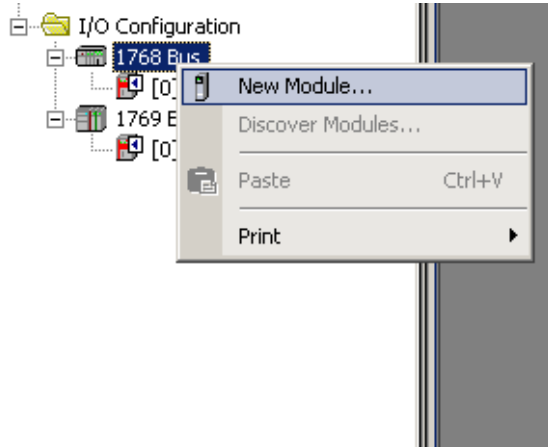
Configuration**Configure the Controller and Add I/O Modules**

The Compact GuardLogix controller is configured by using RSLogix™ 5000 software, version 17 or later. You must create a new project and add the I/O modules. Then, configure the I/O modules for the correct input and output types. A detailed description of each step is beyond the scope of this document. Knowledge of the RSLogix programming environment is assumed.

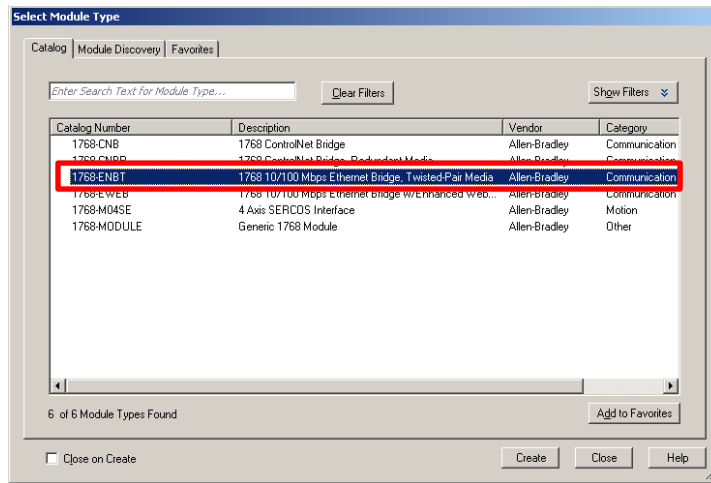
1. In RSLogix 5000 software, create a new project.
2. Choose a controller.
 - a. From the Type pull-down menu, choose 1768-L43S CompactLogix 5343S Safety Controller.
 - b. From the Revision pull-down menu, choose the appropriate revision for the controller.
 - c. In the Name box, type an appropriate name for the controller.
 - d. Click OK.



- In the Controller Organizer, right-click 1768 Bus and choose New Module.

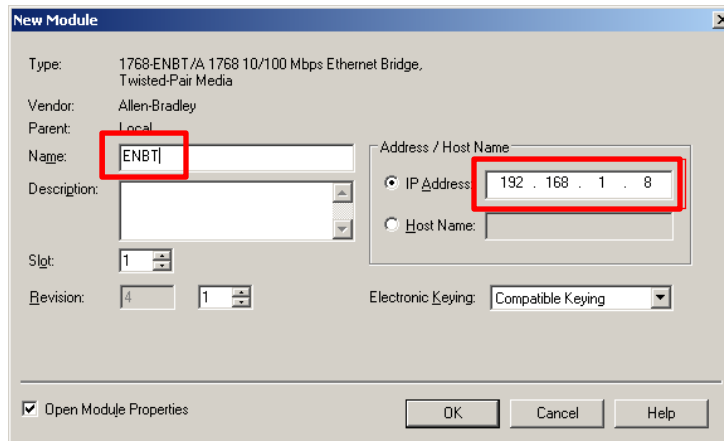


- Choose the 1768-ENBT module and click OK.

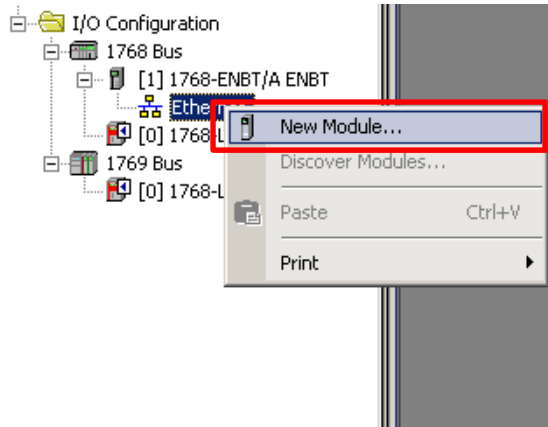


- Name the module, type its IP address, and click OK.

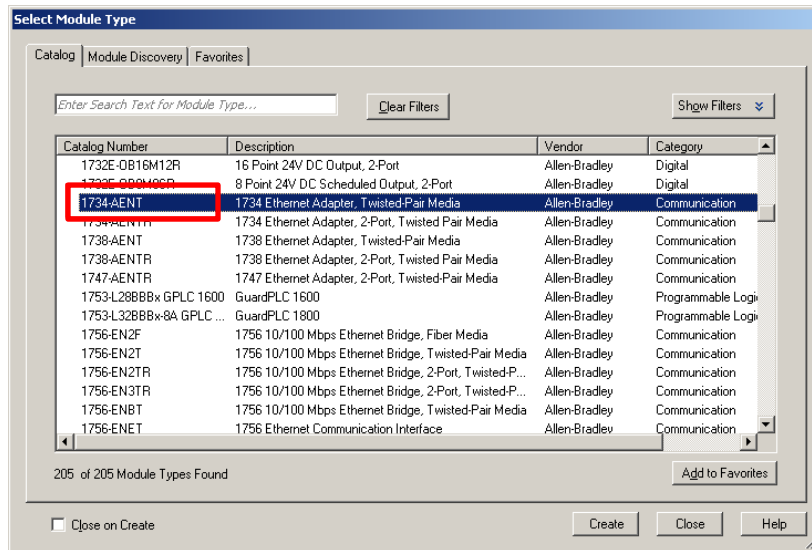
For this application example, we used 192.168.1.8; however, your IP address can be different.



- In the Controller Organizer, right-click the Ethernet network and choose New Module.

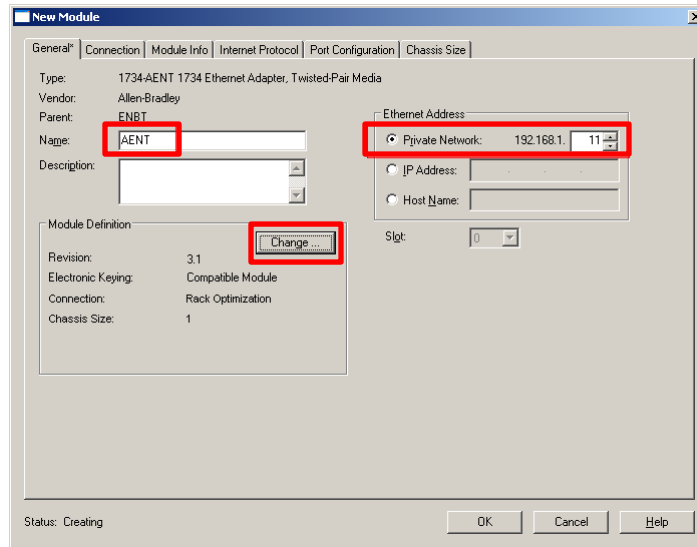


- Select the 1734-AENT adapter and click OK.



- Name the module, type its IP address and click OK.

For this application example, we used 192.168.1.11; however, your IP address can be different.

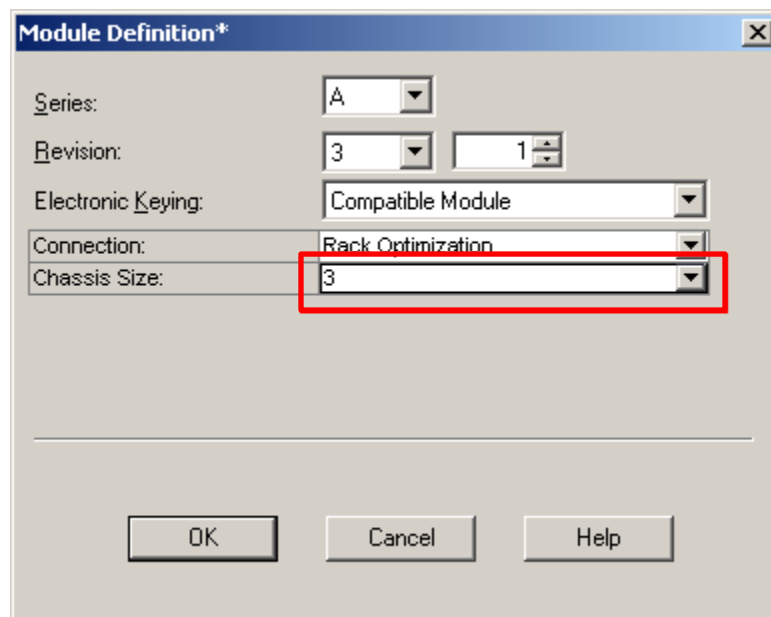


- Click Change.

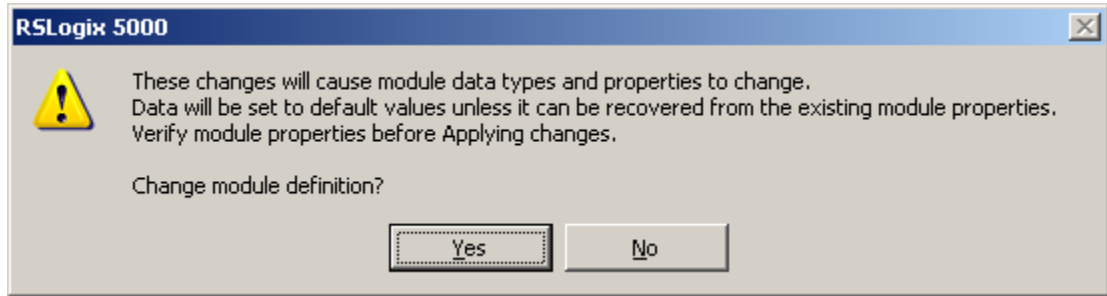
The Module Definition dialog box appears.

- From the Chassis Size pull-down menu, choose 3 and click OK.

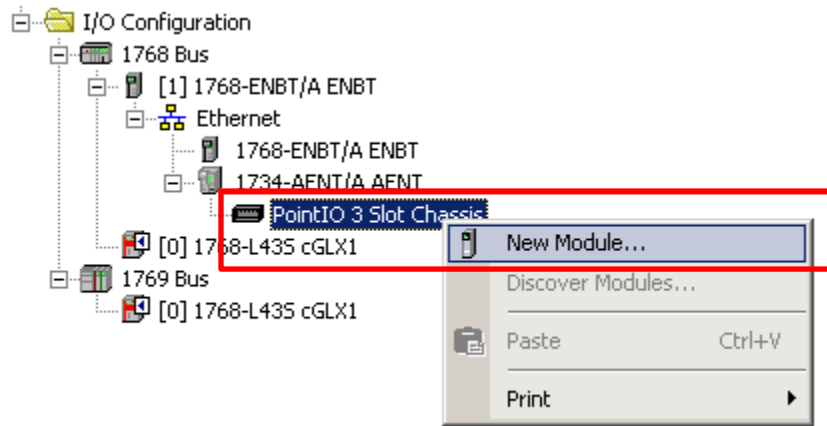
Chassis size is the number of modules that are inserted in the chassis. The 1734-AENT adapter is considered to be in slot 0, so for one input and one output module, the chassis size is 3.



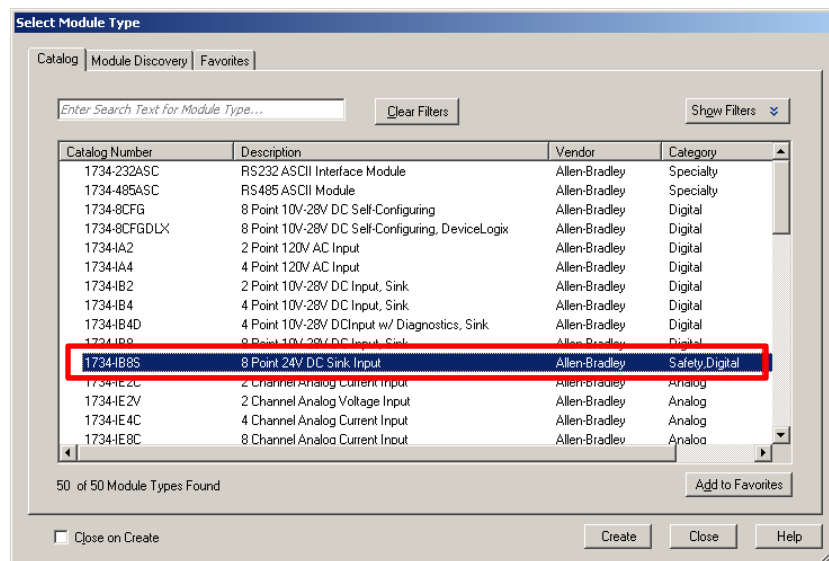
The confirmation screen will be displayed. Click Yes to accept the changes.



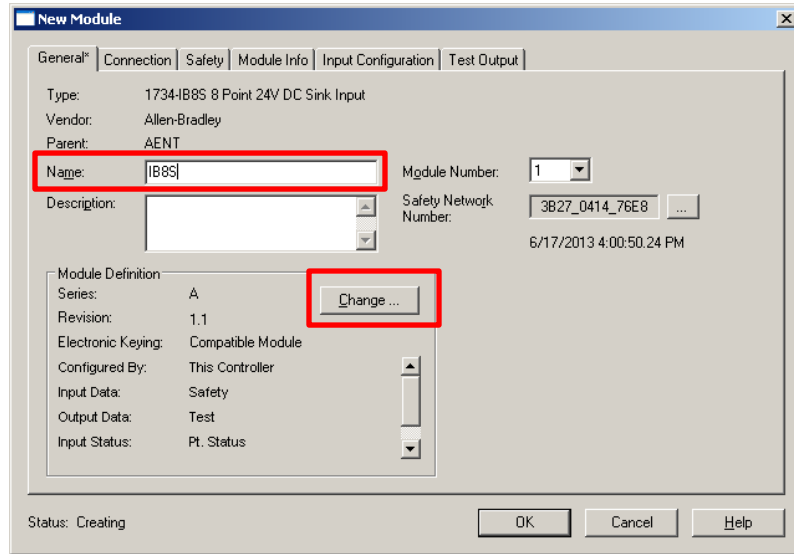
11. In the Controller Organizer, right-click the PointIO 3 Slot Chassis and choose New Module.



12. Expand Safety, select 1734-IB8S module and click OK.



13. In the New Module dialog box, name the device IB8S, then click Change.

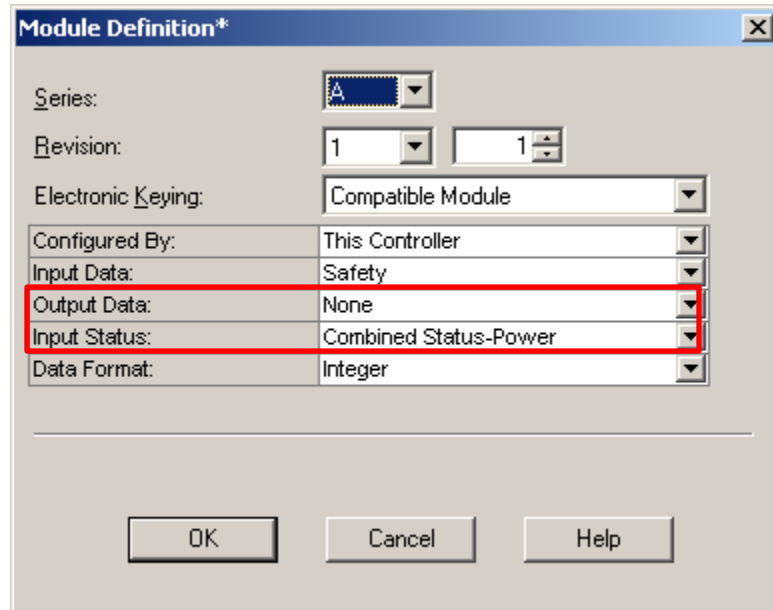


The Module Definition dialog box appears.

14. From the Output Data pull-down menu, choose None.

15. Verify the Input Status is set to Combined Status-Power and click OK.

Setting the output data to None means you cannot use the Test Outputs as standard outputs. This saves one controller connection because we are using only the input connection.

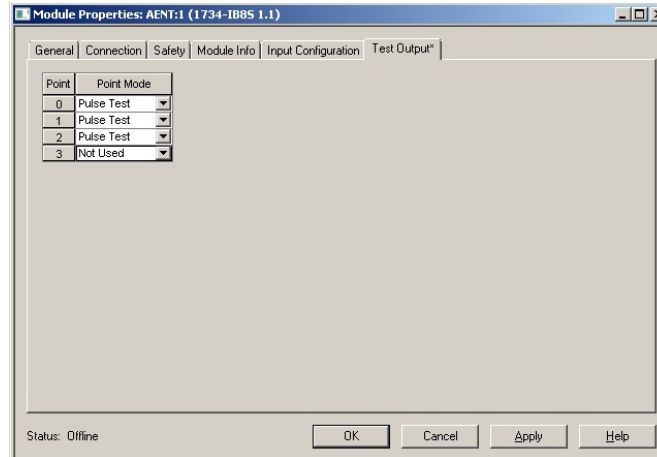


16. Repeat steps 11...15 to add the 1734-OB8S safety output module with these exceptions, name the module OB8S, set the module to slot 2, and set the Input Status to Combined Status-Feedback-Power.

Configure the I/O Modules

Follow these steps to configure the POINT Guard I/O modules.

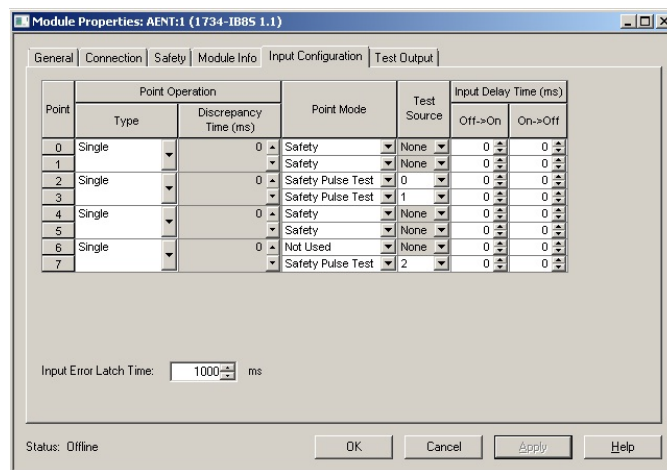
1. In the Controller Organizer, right-click the 1734-IB8S module and choose Properties.
2. Click Test Output and configure the module as shown.



3. Click Input Configuration and configure the module as shown:

- Input Points 0/1 are the SensaGuard.
- Input Points 2/3 are E-stop buttons.
- Input Points 4/5 are the Reset buttons.
- Input Point 7 is the contactor monitoring circuit.

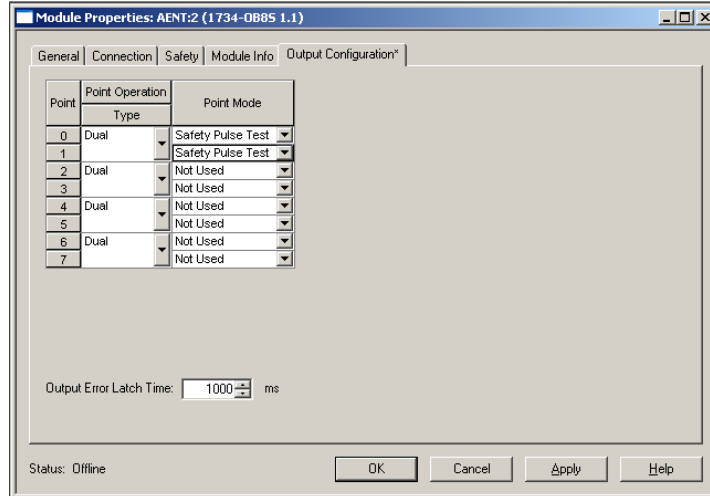
Inputs Point 2 and 3 are being sourced from Test Output 0 and 1, respectively. Input Point 7 is being sourced from Test Output 2.



4. Click OK.
5. In the Controller Organizer, right-click the 1734-OB8S module and choose Properties.

6. Click Output Configuration and configure the module as shown.

Typically, contactor coils will not react to the pulse testing of the output wires. If using a contactor that does react to the pulse test, then disable the pulse testing. This should not affect the overall safety rating if redundancy and monitoring are being utilized.



7. Click OK.

Programming

The Dual Channel Input Stop (DCS) instruction monitors dual-input safety devices whose main function is to stop a machine safely, for example, an E-stop, light curtain, or safety gate. In this example, the DCS instruction is being used to monitor a SensaGuard switch and an E-stop button.

The DCS instruction monitors dual-input channels for consistency (Equivalent-Active High) and detects and traps faults when the inconsistency is detected for longer than the configured Discrepancy Time (ms).

The automatic restart type allows the DCS output (O1) to reset automatically after a demand. The manual action typically required for safety is provided in rung 1 to reset the safety output enable.

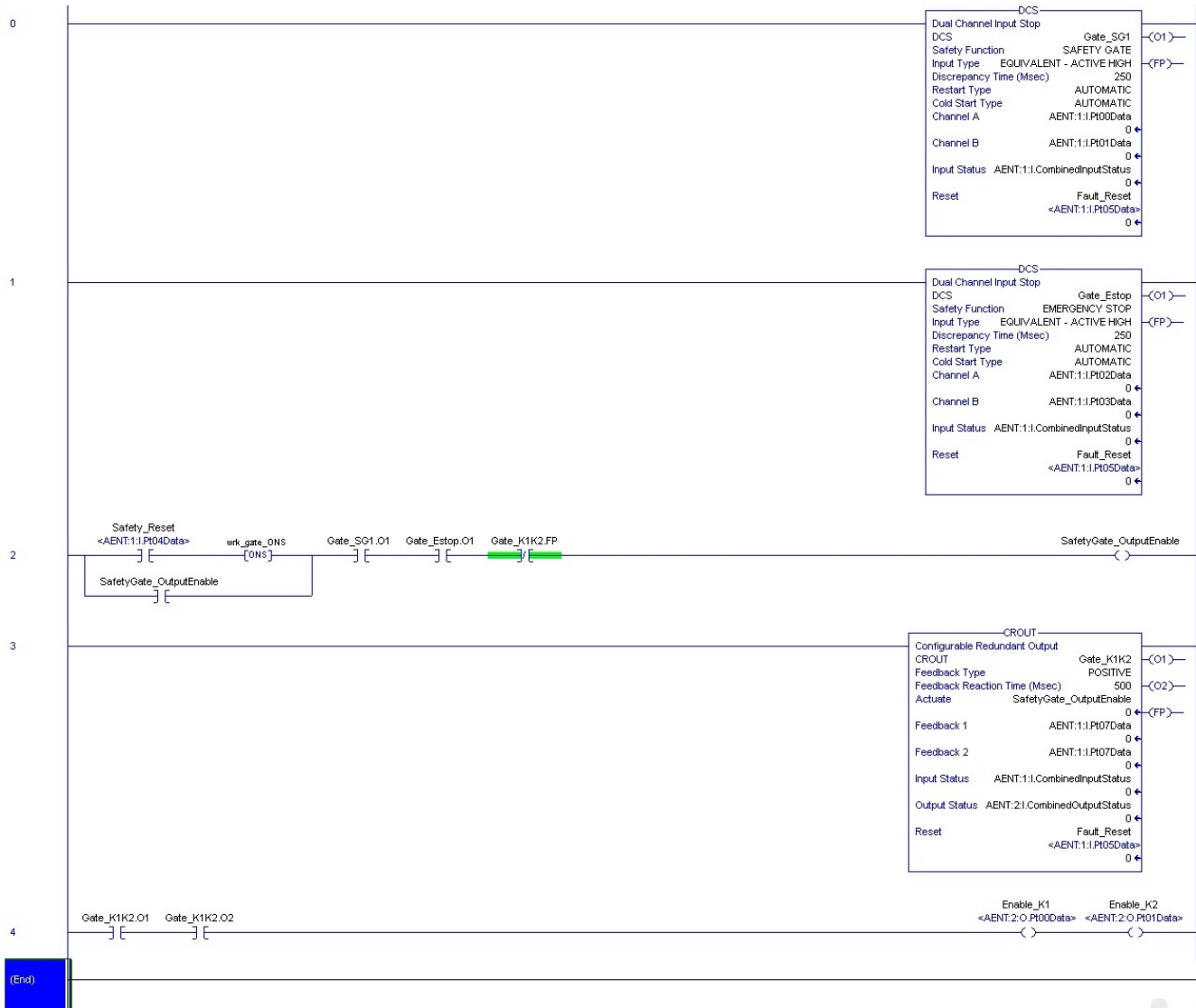
Input Status typically represents the channel status of the two input channels. In this example, the Combined Input Status bit goes low (0) if any of the eight input channels has a fault.

In this example, the DCS reset acts as a fault reset. Even when configured for automatic restart, a reset is required to recover from a fault.

The output (O1) of the DCS instruction is used as a safety interlock in the seal-in rung to drive the output enable tag. If the DCS output drops out, so does the output enable, and it remains off until you manually reset it.

The Configurable Redundant Output (CROUT) instruction controls and monitors redundant outputs. Essentially, this instruction verifies that feedback follows the safety outputs appropriately. For the negative feedback used in this example, if the outputs are high (1), the Feedback is low (0) and vice versa. In this example, the feedback has 500 ms to change to the proper state. Because only a single feedback circuit is being used, the feedback tag is used for both Feedback 1 and 2.

The two output tags from the CROUT instruction are used to drive the contactor outputs on the 1734-OB8S module.

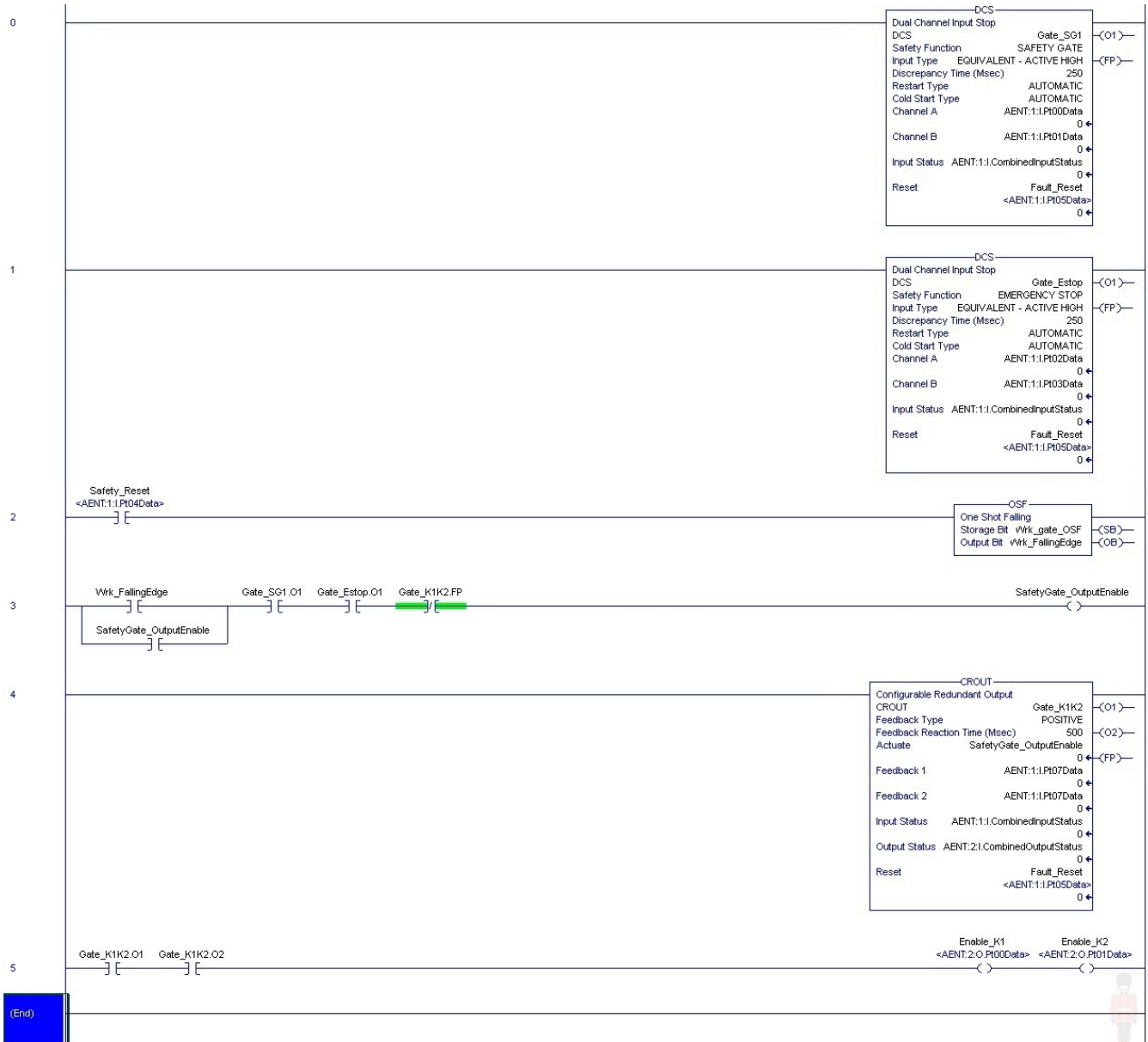


Falling Edge Reset

EN ISO 13849-1 stipulates that instruction reset functions must occur on falling edge signals.

To comply with this requirement, add a One Shot Falling (OSF) instruction to the rung immediately preceding the Cmd_Zone1_OutputEnable rung, then use the OSF instruction Output Bit tag as the reset bit for the following rung. The Cmd_Zone1_OutputEnable is still used to enable the CROUT instruction.

The modified code appears below in rungs 1 and 2.

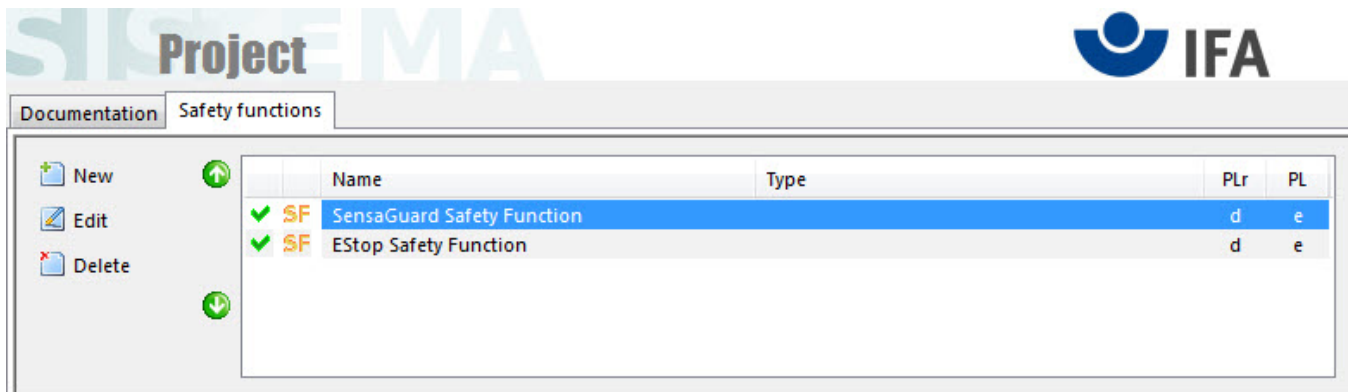


Calculation of the Performance Level

The required Performance Level (PLr) from the risk assessment is Category 3, Performance Level d (CAT. 3, PLd). When properly implemented, the safety functions described can achieve CAT. 4, PLe, according to EN ISO 13849-1: 2008, as calculated by using the SISTEMA software PL calculation tool. Calculations are based on each safety function being operated 5 times an hour, 12 hours a day, 365 days a year, for a total of 21,900 operations a year. The 100S contactors are used in both safety functions; therefore, their calculations are based on 43,800 operations per year.

The measures against Common Cause Failure (CCF) are quantified by using the scoring process outlined in Annex F of EN ISO 13849-1. For the purposes of the PL calculation, the required score of 65 needed to fulfill the CCF requirement is considered to be met. The complete CCF scoring process must be performed when implementing this example.

The subsystem values are shown below.

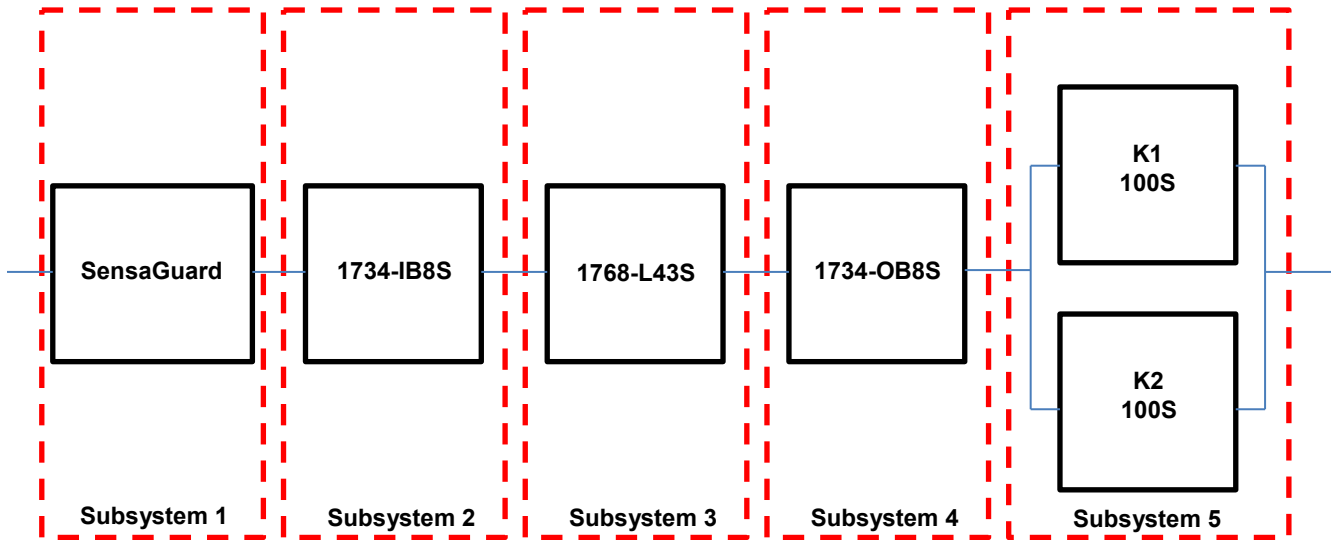


The overall safety project Performance Level is shown below.



This safety System includes two safety functions, a SensaGuard safety function and an E-stop safety function. The two safety functions can be represented in block diagrams.

The SensaGuard safety function can be modeled as shown in the following safety-related block diagram.



Subsystems: SensaGuard, Safety I/O, Compact GuardLogix, and safety contactors modeled as shown below.

Safety function IFA

Name	PL	PFH [1/h]	CCF score	DCavg [%]	MTTFd [a]	Category	Requirements of the ca
POINT Guard I/O: 1734-IB8S	e	1.34E-10	not relevant	not relevant	not relevant	4	fulfilled
POINT Guard I/O: 1734-OB8S	e	1.38E-10	not relevant	not relevant	not relevant	4	fulfilled
Safety PLC: Compact GuardLogix...	e	2.1E-10	not relevant	not relevant	not relevant	4	fulfilled
Contactors 100S	e	2.47E-8	65 (fulfilled)	99 (High)	100 (High)	4	fulfilled
Interlock Switch: SensaGuard	e	1.12E-9	not relevant	not relevant	not relevant	4	fulfilled

SensaGuard Safety Function Subsystem 1

SB Interlock Switch: SensaGuard

PL	e
PFH [1/h]	1.12E-9
Cat.	4
MTTFd [a]	not relevant
DCavg [%]	not relevant
CCF	not relevant

SensaGuard Safety Function Subsystem 2

SB POINT Guard I/O: 1734-IB8S

PL	e
PFH [1/h]	1.34E-10
Cat.	4
MTTFd [a]	not relevant
DCavg [%]	not relevant
CCF	not relevant

SensaGuard Safety Function Subsystem 3

SB Safety PLC: Compact GuardLogix 1768	
PL	e
PFH [1/h]	2.1E-10
Cat.	4
MTTFd [a]	<i>not relevant</i>
DCavg [%]	<i>not relevant</i>
CCF	<i>not relevant</i>

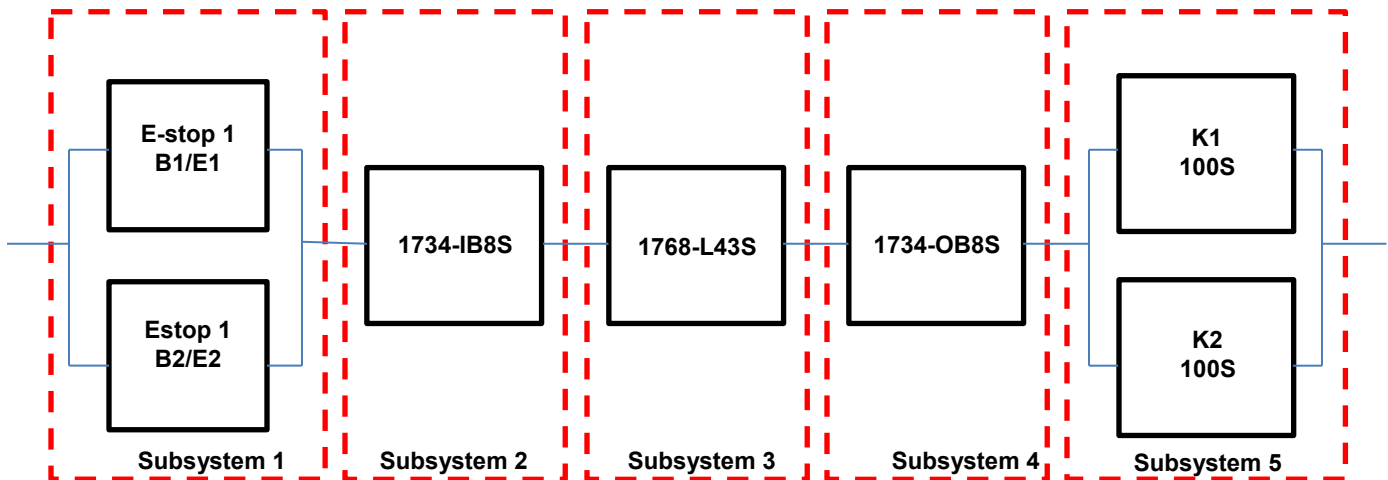
SensaGuard Safety Function Subsystem 4

SB POINT Guard I/O: 1734-OB8S	
PL	e
PFH [1/h]	1.38E-10
Cat.	4
MTTFd [a]	<i>not relevant</i>
DCavg [%]	<i>not relevant</i>
CCF	<i>not relevant</i>

SensaGuard Safety Function Subsystem 5

SB Contactors 100S	
PL	e
PFH [1/h]	2.47E-8
Cat.	4
MTTFd [a]	100 (High)
DCavg [%]	99 (High)
CCF	65 (fulfilled)

The E-Stop safety function is represented below.



Subsystems: E-stop, Safety I/O, Compact GuardLogix, and safety contactors modeled as shown below.

Name	PL	PFH [1/h]	CCF score	DCavg [%]	MTTFd [a]	Category	Requirements of t
POINT Guard I/O: 1734-IB85	e	1.34E-10	not relevant	not relevant	not relevant	4	fulfilled
POINT Guard I/O: 1734-OB85	e	1.38E-10	not relevant	not relevant	not relevant	4	fulfilled
Safety PLC: Compact GuardLogix 1768	e	2.1E-10	not relevant	not relevant	not relevant	4	fulfilled
Contactors 100S	e	2.47E-8	65 (fulfilled)	99 (High)	100 (High)	4	fulfilled
EStop	e	2.47E-8	65 (fulfilled)	99 (High)	100 (High)	4	fulfilled

The E-stop Performance Level is shown below.

Determine PL from subsystems

Performance Level (PL): e PFH [1/h]: 4.98E-8

SB EStop	
PL	e
PFH [1/h]	2.47E-8
Cat.	4
MTTFd [a]	100 (High)
DCavg [%]	99 (High)
CCF	65 (fulfilled)

Because these are electro-mechanical devices, the safety contactors data includes the following:

- Mean Time to Failure, dangerous (MTTFd)
- Diagnostic Coverage (DCavg)
- Common Cause Failure (CCF)

Electro-mechanical devices' functional safety evaluations include the following:

- How frequently they are operated
- Whether they are effectively monitored for faults
- Whether they are properly specified and installed

SISTEMA software calculates the MTTFd by using B10d data provided for the contactors along with the estimated frequency of use, entered during the creation of the SISTEMA project. This application example presumes that the E-stop is operated or tested at least once per day, for a total of 365 times a year.

The DCavg (99%) for the contactors is selected from the Output Device table of EN ISO 13849-1 Annex E, Direct Monitoring.

The DCavg (99%) for the E-Stop is selected from the Input Device table of EN ISO 13849-1 Annex E, Cross Monitoring.

Verification and Validation Plan

Verification and validation play important roles in the avoidance of faults throughout the safety system design and development process. EN ISO 13849-2 sets the requirements for verification and validation. The standard calls for a documented plan to confirm all of the safety functional requirements have been met.

Verification is an analysis of the resulting safety control system. The Performance Level (PL) of the safety control system is calculated to confirm that the system meets the required Performance Level (PLr) specified. The SISTEMA software is typically used to perform the calculations and assist with satisfying the requirements of EN ISO 13849-1.

Validation is a functional test of the safety control system to demonstrate that the system meets the specified requirements of the safety function. The safety control system is tested to confirm that all of the safety-related outputs respond appropriately to their corresponding safety-related inputs. The functional test includes normal operating conditions in addition to potential fault injection of failure modes. A checklist is typically used to document the validation of the safety control system.

Validation of software development is the process in which similar methodologies and techniques that are used in hardware development are deployed. Faults created through poor software development processes and procedures are systemic in nature rather than faults associated with hardware, which are considered as random.

Prior to validating the GuardLogix Safety System, it is necessary to confirm that the safety system and safety application program have been designed in accordance with the GuardLogix System Safety Reference Manuals, publication [1756-RM093](#) (GuardLogix 5560 and Compact GuardLogix controllers) and [1756-RM099](#) (GuardLogix 5570 controllers), and the GuardLogix Application Instruction Safety Reference Manual, publication [1756-RM095](#).

GuardLogix/SensaGuard - Safety Function Verification and Validation Checklist

General Machinery Information			
Machine Name/Model Number			
Machine Serial Number			
Customer Name			
Test Date			
Tester Name(s)			
Schematic Drawing Number			
Controller Name			
Safety Signature 10			
Safety Network Number(s)			
RSLogix 5000 Software Version			
Safety Control System Modules	GuardLogix Modules	Firmware Revision	
GuardLogix Safety Controller	1768-L43S		
CompactLogix Ethernet Bridge	1768-ENBT		
POINT I/O™ Ethernet Adapter	1734-AENT		
POINT I/O Input Modules	1734-IB8S		
POINT I/O Output Modules	1734-OB8S		
GuardLogix Safety System Configuration and Wiring Verification			
Test Step	Verification	Pass/Fail	Changes/Modifications
	Verify that the safety system has been designed in accordance with the GuardLogix System Safety reference manuals listed in the Additional Resources .		
	Verify that the safety application program has been designed in accordance with the GuardLogix Application reference manuals listed in the Additional Resources .		
	Visually inspect the safety system network and verify that the I/O is wired as documented in the schematics.		
	Visually inspect the SensaGuard switch to verify that it is configured as documented.		
	Visually inspect the RSLogix 5000 program to verify that safety system network and I/O module configuration is configured as documented.		
	Visually inspect the RSLogix 5000 application program to verify that suitable safety-certified instructions are used. The logic is readable, understandable, and testable, with the aid of clear comments.		
	All input devices are qualified by cycling their respective actuators. Monitor the status in the RSLogix 5000 Controller Tags window.		
	All output devices are qualified by cycling their respective actuators. Monitor the status in the RSLogix 5000 Controller Tags window.		

GuardLogix/SensaGuard - Safety Function Verification and Validation Checklist (continued)**Normal Operation Verification - The GuardLogix safety system properly responds to all normal Start, Stop, E-stop and Reset commands.**

Test Step	Verification	Pass/Fail	Changes/Modifications
	Initiate a Start command. Both contactors energize for a normal machine run condition. Verify proper machine status indication and RSLogix 5000 safety-application program indication.		
	Initiate a Stop command. Both contactors de-energize for a normal machine stop condition. Verify proper machine status indication and RSLogix 5000 safety-application program indication.		
	While the system is running, open the moveable door. Both contactors de-energize and open for a normal safe condition. Verify proper machine status indication and RSLogix 5000 safety-application program indication. Repeat for all SensaGuard switches.		
	While the system is stopped and the door is open, initiate a Start command. Both contactors remain de-energized and open for a normal safe condition. Verify proper machine status indication and RSLogix 5000 safety-application program indication.		
	While the system is running, press the E-stop button. Both contactors de-energize and open for a normal safe condition. Verify proper machine status indication and safety relay status indicator indication. Repeat for all E-stop buttons.		
	While the system is stopped, press the E-stop button and initiate a Start command. Both contactors remain de-energized and open for a normal safe condition. Verify proper machine status indication and safety-relay status indicator indication. Repeat for all E-stop buttons.		
	Initiate a Reset command. Both contactors remain de-energized. Verify proper machine status indication and RSLogix 5000 safety-application program indication.		

GuardLogix/SensaGuard - Safety Function Verification and Validation Checklist (continued)

Abnormal Operation Validation -The GuardLogix safety system properly responds to all foreseeable faults with corresponding diagnostics.

E-stop Input Tests

Test Step	Validation	Pass/Fail	Changes/Modifications
	While the system is running, remove the channel 1 wire from the safety I/O module. Both contactors de-energize. Verify proper machine status indication and RSLogix 5000 safety-application program indication. Verify that the system is unable to reset and restart with a fault. Restore channel 1 and repeat for channel 2.		
	While the system is running, short channel 1 of the safety I/O module to 24V DC. Both contactors de-energize. Verify proper machine status indication and RSLogix 5000 safety-application program indication. Verify that the system is unable to reset and restart with a fault. Restore channel 1 and repeat for channel 2.		
	While the system is running, short channel 1 of the safety I/O module to 0V DC. Both contactors de-energize. Verify proper machine status indication and RSLogix 5000 safety-application program indication. Verify that the system is unable to reset and restart with a fault. Restore channel 1 and repeat for channel 2.		
	While the system is running, short channels 1 and 2 of the safety I/O module. Both contactors de-energize. Verify proper machine status indication an RSLogix 5000 safety-application program indication. Verify that the system is unable to reset and restart with a fault. Restore channel 1 and channel 2 wiring.		

GuardLogix/SensaGuard - Safety Function Verification and Validation Checklist (continued)

SensaGuard Input Tests			
Test Step	Validation	Pass/Fail	Changes/Modifications
	While the system is running, remove the channel 1 wire from the safety I/O module. Both contactors de-energize. Verify proper machine status indication and RSLogix 5000 safety-application program indication. Verify that the system is unable to reset and restart with a fault. Restore channel 1 and repeat for channel 2.		
	While the system is running, short channel 1 of the safety I/O module to 24V DC. Both contactors de-energize. Verify proper machine status indication and RSLogix 5000 safety-application program indication. Verify that the system is unable to reset and restart with a fault. Restore channel 1 and repeat for channel 2.		
	While the system is running, short channel 1 of the safety I/O module to 0V DC. Both contactors de-energize. Verify proper machine status indication and RSLogix 5000 safety-application program indication. Verify that the system is unable to reset and restart with a fault. Restore channel 1 and repeat for channel 2.		
	While the system is running, short channels 1 and 2 of the safety I/O module. Both contactors de-energize. Verify proper machine status indication and RSLogix 5000 safety-application program indication. Verify that the system is unable to reset and restart with a fault. Restore channel 1 and channel 2 wiring.		

GuardLogix Controller and Network Tests

Test Step	Verification and Validation	Pass/Fail	Changes/Modifications
	While the system is running, remove the Ethernet network connection between the safety I/O module and the controller. All contactors de-energize. Verify proper machine status indication and I/O connection status in the RSLogix 5000 safety-application program.		
	Restore the safety I/O module network connection and allow time to re-establish communication. Verify the state of the connection status bit in the RSLogix 5000 safety-application program. Repeat for all safety I/O connections.		
	While the system is running, switch the controller out of Run mode. All contactors de-energize. Return the keyswitch back to Run mode. All contactors remain de-energized. Verify proper machine status indication and RSLogix 5000 safety-application program indication.		

GuardLogix/SensaGuard - Safety Function Verification and Validation Checklist (continued)

Safety Contactor Output Tests			
Test Step	Verification and Validation	Pass/Fail	Changes/Modifications
	Initiate a Start command. Both contactors energize for a normal machine run condition. Verify proper machine status indication and RSLogix 5000 safety-application program indication.		
	While the system is running, remove the contactor feedback from the safety I/O module. All contactors remain energized. Initiate a Stop command and attempt a Reset command. The system does not restart or reset. Verify proper machine status indication and RSLogix 5000 safety-application program indication.		
	While the system is running, short the contactor feedback to the safety I/O module. All contactors remain energized. Initiate a Stop command and attempt a Reset command. The system does not restart or reset. Verify proper machine status indication and RSLogix 5000 safety-application program indication.		

Additional Resources

Refer to these publications for more information about related products from Rockwell Automation.

Resource	Description
Compact GuardLogix Controllers User Manual, publication 1768-UM002	Provides information on configuring, operating, and maintaining Compact GuardLogix controllers.
POINT Guard I/O Safety Modules Installation and User Manual, publication 1734-UM013	Provides information on installing, configuring, and operating POINT Guard I/O modules.
GuardLogix Control Systems Safety Reference Manual, publication 1756-RM093	Provides detailed requirements for achieving and maintaining safety ratings with the GuardLogix and Compact GuardLogix controller systems.
GuardLogix Safety Application Instruction Set Reference Manual, publication 1756-RM095	Provides detailed information on the GuardLogix Safety Application Instruction Set.
GuardLogix 5570 Controller Systems Safety Reference Manual, publication 1756-RM099	Contains detailed requirements for achieving and maintaining safety ratings with the GuardLogix 5570 controller system.
Safety Accelerator Toolkit for GuardLogix Systems Quick Start Guide, publication IASIMP-QS005	Provides a step-by-step guide to using the design, programming, and diagnostic tools in the Safety Accelerator Toolkit.
SensaGuard Integrated Latch Unique Coded Installation Instructions, publication 10000121840 Ver 03	Provides detailed installation instructions for the SensaGuard coded sensor.
SensaGuard 18 mm Stainless Steel Barrel Installation Instructions, publication 75056-181-05	Provides detailed installation instructions for the SensaGuard coded sensor.

Resource	Description
SensaGuard Rectangular Flat Pack Installation Instructions, publication 10000182958 Ver 00	Provides detailed installation instructions for the SensaGuard 18 mm stainless steel barrel sensor.
SensaGuard Rectangular Flat Pack Installation Instructions, publication 75056-179 Ver 04	Provides detailed installation instructions for the SensaGuard rectangular flat pack sensor.
SensaGuard 18 mm Plastic Barrel Installation Instructions, publication 75056-180/3	Provides detailed installation instructions for the SensaGuard 18 mm plastic barrel sensor.
SensaGuard Rectangular Flat Pack Unique Coded Installation Instructions, publication PN-46047	Provides detailed installation instructions for the SensaGuard rectangular flat pack unique coded sensor.
SensaGuard 18 mm Stainless Steel Barrel Unique Coded Installation Instructions, publication PN-46046	Provides detailed installation instructions for the SensaGuard 18 mm stainless steel barrel unique coded sensor.
SensaGuard 18 mm Plastic Barrel Unique Coded Installation Instructions, publication PN-46045	Provides detailed installation instructions for the SensaGuard 18 mm plastic barrel unique coded sensor.
Safety Products Catalog, publication S117-CA001	Provides an overview of products, product specifications, and application examples.

You can view or download publications at <http://www.rockwellautomation.com/literature>. To order paper copies of technical documentation, contact your local Allen-Bradley distributor or Rockwell Automation sales representative.

For more information on
Safety Function Capabilities, visit:
discover.rockwellautomation.com/safety

Rockwell Automation, Allen-Bradley, Rockwell Software, Compact GuardLogix, POINT Guard I/O, POINT I/O, SensaGuard, CompactLogix, Stratix 2000, RSLogix, and LISTEN.THINK.SOLVE. are trademarks of Rockwell Automation, Inc. Trademarks not belonging to Rockwell Automation are property of their respective companies.

www.rockwellautomation.com

Power, Control and Information Solutions Headquarters

Americas: Rockwell Automation, 1201 South Second Street, Milwaukee, WI 53204-2496 USA, Tel: (1) 414.382.2000, Fax: (1) 414.382.4444

Europe/Middle East/Africa: Rockwell Automation NV, Pegasus Park, De Kleetlaan 12a, 1831 Diegem, Belgium, Tel: (32) 2 663 0600, Fax: (32) 2 663 0640

Asia Pacific: Rockwell Automation, Level 14, Core F, Cyberport 3, 100 Cyberport Road, Hong Kong, Tel: (852) 2887 4788, Fax: (852) 2508 1846