

## How do PC repair and service teams confidently test and identify hardware faults... regardless of experience?

- By using Windows®-based tests to fully validated UEFI enabled components as well as non-UEFI hardware.
- Diagnostics work precisely with Windows to test hardware in its intended operating system environment.
- Ideal for all hardware that requires Windows drivers to function.
- By applying 25 years testing experience contained in a Eurosoft box
- With bundling options remotely coaching inexperienced end users through the simple QA+Win™ testing experience

### Easy to Use – even by end users

- Comprehensive Help file defines faults and possible solutions
- Choose Scripted or manually selected test modules.

### Maximize profits by reducing hardware return costs

- Reduce assembly, upgrade, and repair test workloads
- Reduce returns and repairs
- Reduce support calls

### Control and contain errors

- Increase your profitability by improving PC reliability during system manufacturing integration, upgrading and servicing
- Reveal hard-to-find intermittent errors
- Increase service reliability

### Variable test options

- Use Windows XP SP3/Vista/Windows 7/8/8.1/10/Server 2003 and Server 2008 RC2, WinPE- **32bit and 64bit editions**
- Use Windows® Preinstallation Environment (PE) with Microsoft OEM license

- Standalone or bundle diagnostics
- Flexible diagnostic module control
- Fault and hardware asset testing

### Validate PCs at any lifecycle point with QA+Win™

- Multi-cycle and duration burn-in
- Latest CPU support, including AMD, Intel, and compatibles
- Test Result Logging: File (PDF and/or XML)
- Stress test
- Simultaneous testing of all core components (processors, memory, hard drives, optical, video, etc.)
- Enumerated, modular test loading
- Biometric devices
- Capture device testing such as web cams
- Installed software

### Fully network-able with Site license

- Network drive logging for connectivity
- Network distribution of test result files

### Optional hardware accessories...

- Allows testing of USB ports, CD/DVD drives, and audio

### Control test time and process

All parameters and tests can be set and/or launched manually from the interface...or scripted for even tighter control, versatility of test parameters, and coverage. Save and re-run custom test scripts for extreme consistency. Full test documentation is conveniently integrated.

### Verify the presence of nearly any component

QA+Win gathers information on all the devices present in the system using the Diagnostic groups.

This information is viewable within the main interface and is output in any PDF reports...allowing you to verify exactly what devices are installed.

Confirm and record properties of the hardware – including but not limited to...

- BIOS information – date, version, and more
  - Hard Drive – model number, serial number, capacity, and more
  - Memory – type, speed, size, manufacturer, and more
  - Sensors – speed, temperature, and more
  - Video – model number, memory, vender name, and more
- And that's only a few..

### Validate high reliability and flush out elusive intermittent errors

Customize your System Stress Test to run for several minutes, several hours, or several days. The Duration parameter lets you stress a system for any required duration.

### Flexible licensing options perfectly fit your costs and needs

QA+Win™ offers standalone, bundle diagnostics or site licenses that are fully compatible with Windows XP/ Vista/7/8/8.1/10/Server 2003 and Server 2008 32bit and 64bit editions and Microsoft Windows Preinstallation Environment (WinPE). Whether you are running 1 or 100+ stations, flexible diagnostic control gives you full command over your entire testing operation. Take advantage of Windows Remote Desktop capabilities.



**Call a Eurosoft consultant today to discuss your testing goals...**

**Europe: +44 (0)1202 297 315**

**North America: 888-980-9595**

## Maximize your operational efficiency to increase your ROI

Take full advantage of your existing or future network infrastructure by leveraging network distribution capabilities available with the Site License. Logging test results to your network makes them available to all networked users.

## Increase throughput by reducing human errors

Save all your script customizations for use across your entire operation to gain maximum consistency. Leverage auto-script launch options to ensure the same test scripts are executed each time QA+Win™ is started.

## Validate process failures for vendor compliance

Optional test reports can be printed and saved directly from the interface. Streamline your returns process by including test reports to meet proof-of-failure requirements.

## Increase process speed with customizable start-up options

Customize to reduce application overhead and increase program start-up speed with optional command line functions.

QA+Win can be customised in many different ways to allow for a more personalised testing experience. The following can be changed:

- PDF report style
- PDF report header
- Interface layout
- Home page - Virtual QA+Win
- Title page - Virtual QA+Win
- Full language customisation

## Optional hardware accessories increase test coverage

Use loop backs and USB port plugs to verify the correct installation of front panel connections by performing USB, Optical Drive, and Audio tests. This definitive method of validating correct port connection lets you catch assembly errors electronically.

## Hardware Coverage

QA+Win™ supports all the latest CPUs...AMD, Intel and compatibles...both 32-bit and 64-bit.

Diagnostic modules are included for all major hardware – hard drives up to 16 Exabyte, video, audio, CPU, network interfaces, USB, optical drives, write-able optical drives, keyboards, modems, motherboards,

pointer devices, serial, parallel ports, and as much memory as Windows can recognize (WinPE/Windows8.1/10 X86 up to 64GB total, X64 up to 4TB total). Also included are test modules for file version control, notebook batteries, and removable media – SD and Compact Flash cards, and sensors.

QA+WIN also supports the latest tablet PC hardware including gyroscopes, accelerometers, GPS hardware, compasses, and ambient light sensors.

## Fully Customizable Interface

Docking controls let you customize and save the arrangement of the interface to enhance your test process.

## Translation

QA+Win has full translation support to allow the interface and documentation to be used in any written language. These translations are stored as a Language Pack containing XML files with all the translated strings and the translated PDF documents for the User Manual and Test Descriptions document. The language pack to be loaded and used is controlled by the license. As well as English, the Diagnostics have been translated into Brazilian Portuguese, Spanish, French, Chinese and Turkish.

## Home Page

The Home Page feature allows a selection of Test Scripts and Web Pages to be available in a table within the application. This allows test scripts to be accessed and run at the click of a button by the end user.

## Title Page

The Title Page feature allows a web page to be loaded and shown within a Pane within the application. This is ideal for a customer wishing to highlight their own product or brand. The instructions to set up a Title Page can be found in the QA+Win User Manual.

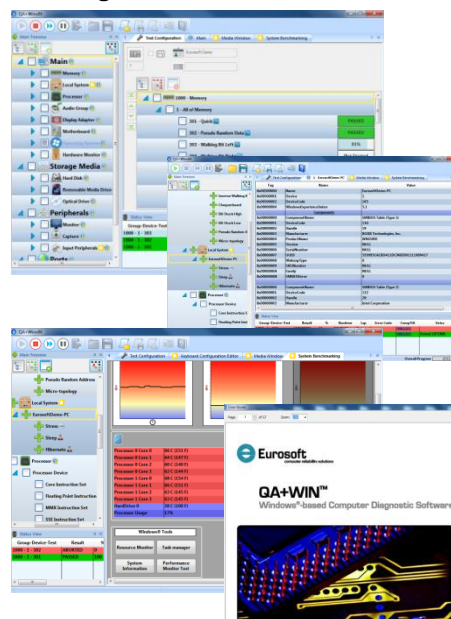
## Test Error Codes

When a test fails within QA+Win, an Error Code and optional Extra Information will be shown on the Results Pane and will also be logged in the Results XML report. The Error Code can then be clicked on within the interface and the relevant Error information and troubleshooting is linked to the Test Description document and will be shown.

## Built on the long standing Eurosoft diagnostic suite containing the most comprehensive industry leading diagnostic solutions...QA+Win™ lets you...

- Identify hardware faults from software issues...before you ship
- Validate PCs at any lifecycle point
- Fully test UEFI enabled hardware
- Increase your profits by reducing system repairs and returns
- Manage your cash flow with various licenses
- Decrease your support costs with the support bundling license
- See immediate ROI...

## Please see the Eurosoft Product Test Table for specific hardware test coverage.



## QA+Win™ Package

- Program CDROM
- Convenient download updates
- Comprehensive user e-manual
- USB Preferred Port Plug (1 per license)
- Loop-back Plugs (2 Parallel, 1 Serial Port set per license)
- Audio Test Cable (1 three-way)
- One year free Upgrade Subscription
- Free Technical Support
- Extra Test Accessory and Multiple System Testing License options available (contact Eurosoft for details).

## Minimum System Requirements

- IBM compatible PC running one of the following operating systems.
- Microsoft Windows XP (SP3) or later operating systems, Microsoft Windows 2003 & 2008 Server, Vista, Windows 7, Windows 8, Windows 8.1, and Windows 10
- Supports Microsoft® Windows Preinstallation Environment (WinPE) (please contact Eurosoft for details).
- Adobe Acrobat or similar PDF reader to read the manuals.

# Diagnostic coverage for all major hardware groups in Microsoft Windows and Microsoft Windows Preinstallation Environment (WinPE). \*

## Parallel Ports

Data Port  
External Loop-back  
Status Register

## Memory

Quick  
Pseudo Random Data  
Walking Bit Left  
Walking Bit Right  
Inverse Walking Bit Left  
Inverse Walking Bit Right  
Chequerboard  
Bit Stuck High  
Bit Stuck Low  
Pseudo Random Address  
Micro-topology

## Gyroscope

Quick Status  
Core Recognition  
Simple Roll Test  
Gyroscope Roll

## Accelerometer

Core Recognition  
Quick Status  
Acceleration

## Location

Core Recognition  
Quick Status  
Location

## Network

Configuration  
IPv4 Connection  
Wireless Strength  
Wireless Connection  
System Connected

## Hard Drives

Butterfly Seek  
Random Read  
Linear Read  
S.M.A.R.T. Failure  
S.M.A.R.T. Short  
S.M.A.R.T. Conveyance  
S.M.A.R.T. Extended  
Hard Drive Temperature

## USB

Detected Devices

## Connectivity Test

## Floppy Drives

Butterfly Seek  
Linear Read  
Read Write  
Media Change  
Write Protect

## Monitor

Red Purity  
Green Purity  
Blue Purity  
Mesh  
Inverse Mesh  
White MEME  
Green MEME  
Tonality  
Grid  
LCD Dead Pixel

## FireWire

IEEE 1394

## Serial Ports

Configuration Registers  
Quick Loop-back  
Baud Rates  
Sustained Loop-back  
Priority Transmit

## Removable Media

Linear Read  
Random Read  
Connectivity

## System

Stress  
Sleep  
Hibernate

## Processor

Core Instruction Set  
Floating Point  
Instruction Set  
MMX Instruction Set  
SSE Instruction Set  
SSE2 Instruction Set  
SSE3 Instruction Set  
SSE 4.1 Instruction Set  
Cache Functionality  
SSE 4.2 Instruction Set  
SSE 4A Instruction Set  
Multi-core  
Multi-processor  
Core Priority  
Thermal Stress  
Power Stress  
CPU Fan Test  
CPU Temperature

## Audio

Audio Connection  
Loop-back Count  
Advanced Quality  
Quick Microphone  
Quick System Sound

## Display Adapter

Linear Memory  
Micro-topology Memory  
Chaotic Addressing Memory  
Hardware Acceleration  
Graphics Card Temperature

## Video Capture

Capture Driver  
Composite Capture Driver  
S-Video Capture Driver  
TV Capture Driver  
RGB Capture Driver  
Capture  
Composite Capture  
S-Video Capture  
TV Capture  
RGB Capture

## Battery

Voltage  
Performance  
Quick State  
Core Recognition  
Advanced State

## Optical

Linear Read  
Random Read  
Advanced Movement  
Media Erase  
Directory Write  
ISO Image Write  
Media Eject

## Biometric

Core Recognition

## Motherboard

North-bridge  
South-bridge  
CMOS Clock  
CMOS Checksum  
CMOS Battery  
System Fan  
Voltage Core Detection  
System Temperature

## Operating System

Activated  
Genuine  
Event Log  
Kernel Response  
Driver  
Singed Driver  
OS Requirements  
Security Support

## Hardware Monitor

System Temperature  
CPU Temperature  
CPU Fan  
System Fan  
Voltage Core Detection  
Test  
Drive Temperature  
Graphics Card Temperature

## Solid State Drives

Linear Read  
S.M.A.R.T. Failure  
S.M.A.R.T. Short  
S.M.A.R.T. Conveyance  
S.M.A.R.T. Extended

## RAID

Linear Read

## Touch Screen

Quick Grid  
Advanced Line  
Pointing Accuracy

## Input Peripherals

Keyboard  
Keyboard LED  
Quick Mouse  
Mouse Button  
Movement  
Quick Keyboard

## Lenovo Custom

## Diagnostic Group

Golden Key Test

## Compass

Core Recognition  
Quick Status  
Direction

## Ambient Light

Core Recognition  
Quick Status  
Ambient Light Level

\* Tests that are listed in blue are not compatible with Microsoft Windows Preinstallation Environment (WinPE).

### Supported Operating Systems

Windows XP SP3  
Windows Server 2003  
Windows Vista  
Windows Server 2008 R2  
Windows 7  
Windows 8  
WinPE

### Note:

The following test groups or tests require full Windows environment.

- Video
- Biometric Devices
- Capture Card\*\*
- Network Interface tests for wireless network interfaces
- System Sleep Test
- System Hibernate Test
- Battery Voltage Test

\*\*Generic Capture Driver Test available in Microsoft Windows Preinstallation Environment (WinPE).

Hard drives up to 16 Exabyte

AMD, Intel and compatible CPUs...both 32-bit and 64-bit.

Test as much memory as Windows can recognize (WinPE/Windows8.1 X86 up to 64GB total, X64 up to 4TB total).

# QA+WIN®

## Windows based diagnostic software

Available test accessories help you find cabling and configuration errors faster.

Extend and enhance your test procedures with Eurosoft's proven PC Diagnostic Programs and unique test accessory hardware. Each computer testing accessory is developed to work specifically with Eurosoft's test programs providing you with independent and reliable test results of peripheral ports and media devices.

Eurosoft PC Test Accessories include: USB Preferred Port Plugs™, Serial & Parallel Loop-back Plugs, Audio Test Cables, DVD Test Discs™, and CDROM Test Discs. Stand-alone accessories include the Preferred POST Board™ PCI/ISA.



### Eurosoft PC Test Accessories

- PC Diagnostic Test Accessories complement and extend the test and diagnostics provided by current software solutions
- PC Diagnostic Test Accessories fully support the entire PC diagnostic, test and assessment program
- PC Diagnostic Test Accessories validate Serial, Parallel, Audio and USB ports
- PC Diagnostic Test Accessories confirm CD-ROM and DVD Drive operations
- PC Diagnostic Test Accessories compare BIOS/POST results
- PC Diagnostic Test Accessories are designed to universally support the Eurosoft diagnostic software for enhanced peripheral testing

### Need more test coverage?

Also consider adding Eurosoft Pc-Check® Self-Booting Diagnostic Software for testing outside the operating system



Pc-Check reduces assembly, upgrade and repair test workloads

Pc-Check ensures reliably tested and validated PCs

Pc-Check thoroughly tests core components independent of operating system (including memory, motherboard, CPU and hard drive)

Pc-Check provides expert core testing to exercise the entire system's components

Pc-Check reduces costly returns, RMAs and repairs by quickly and accurately determining hardware faults

Pc-Check saves wasted man-hours of system building, servicing and repairs

Pc-Check ensures an independent test base to compare and validate vendor hardware information

## Call a Eurosoft consultant today to discuss your testing goals...

Contact us for further information on QA+Win™ or any other Eurosoft product.

### Eurosoft (UK) Ltd

Head Office  
3 St Stephens Road  
Bournemouth, UK BH2 6JL

Tel +44 (0)1202 297315  
Fax +44 (0)1202 558280

info@eurosoft-uk.com  
www.eurosoft-uk.com

### Eurosoft (US) Inc.

North American Sales Office  
Unit 8, PMB 304, 679 Washington Street  
South Attleboro, MA 02703, USA

Tel US Toll Free +1 (888) 980-9595  
Fax +1 (866) 615-9384

info@eurosoft-us.com  
www.eurosoft-us.com

© Eurosoft (UK) Ltd. 1988-2015. Pc-Check is a registered trademarks of Eurosoft (UK) Ltd. Boot2Test, PC Builder, QA+Win32, QA+Win, QA+FE Service Center, ZeroData, Virtual QA+, Virtual Pc-Check, USB Preferred Port Plug, CDT, DVDT, EuroDOS are trademarks of Eurosoft (UK) Ltd. All other product trademarks are recognised as belonging to their respective owners.

