

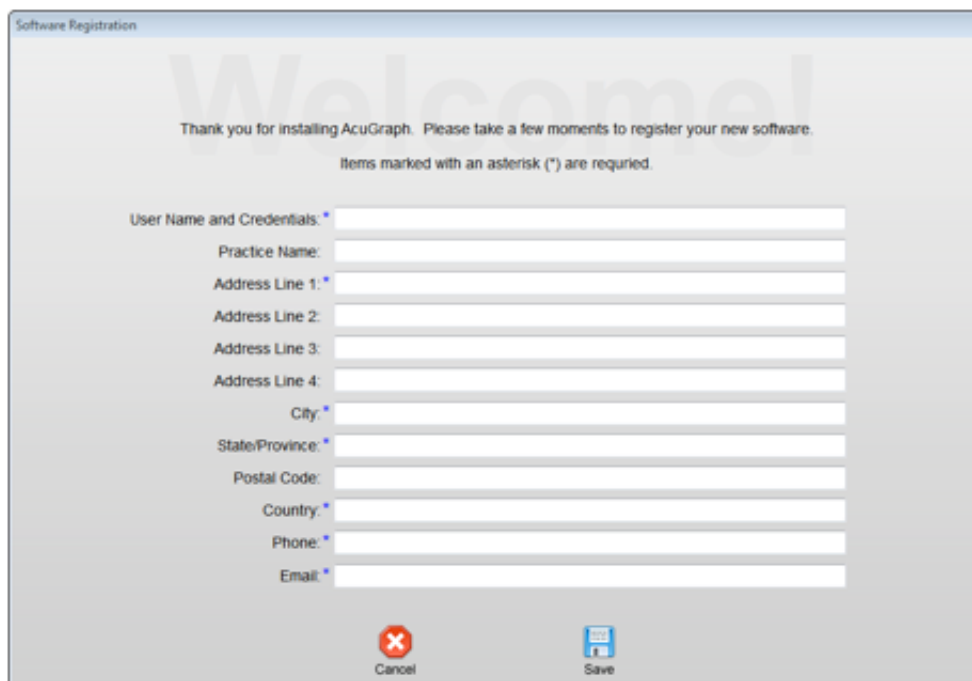
Setting up AcuGraph

Now that you have installed AcuGraph, it is time to set up your new software. This setup operation only needs to be completed once. To set up your software and prepare it for use, please follow these steps:

1. Double-click on the AcuGraph 4 icon to start the application.

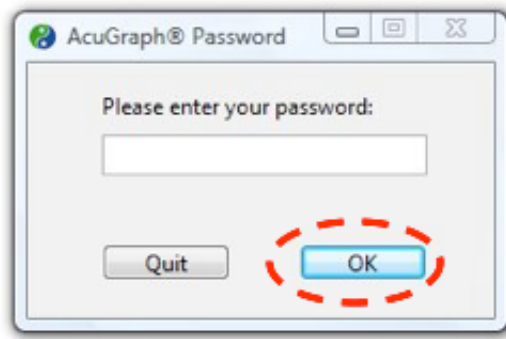


2. Read and accept the terms and conditions set forth in the license agreement.
3. **REGISTRATION INFORMATION:** A window will appear requesting registration information.

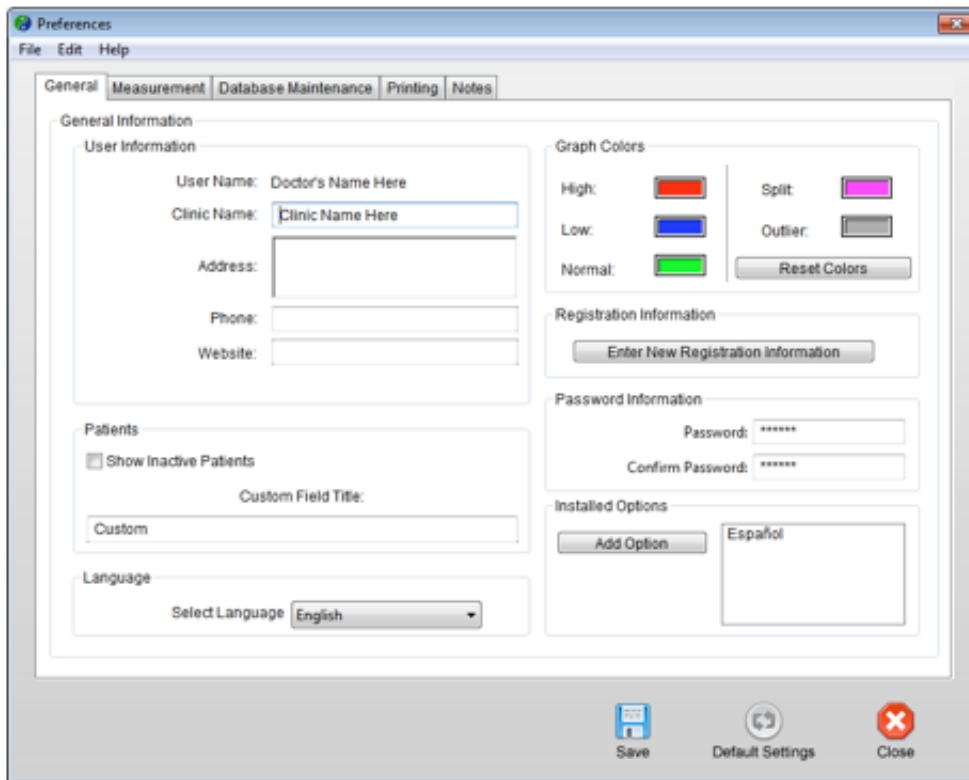
A screenshot of the "Software Registration" window. The window has a light blue title bar and a gray background. At the top, it says "Welcome!" in large, light blue letters. Below that, it says "Thank you for installing AcuGraph. Please take a few moments to register your new software." and "Items marked with an asterisk (*) are required." The form contains several input fields: "User Name and Credentials:" (marked with an asterisk), "Practice Name:", "Address Line 1:" (marked with an asterisk), "Address Line 2:", "Address Line 3:", "Address Line 4:", "City:" (marked with an asterisk), "State/Province:" (marked with an asterisk), "Postal Code:", "Country:" (marked with an asterisk), "Phone:" (marked with an asterisk), and "Email:" (marked with an asterisk). At the bottom, there are two buttons: "Cancel" (with a red X icon) and "Save" (with a blue floppy disk icon).

NOTE: You MUST enter the information requested in the boxes marked with stars. Please enter the information exactly as you want it to appear in your software registration. When you have completed the registration screen, please press **"Save."**

4. A window will appear asking for your password. The factory-set password is "energy" (all lower case, without quote marks.) For information on changing your password, click [here](#).



5. You will then be taken to the **General Preferences** section. Please enter your practice information. This information can be changed at any time by selecting "Edit, Preferences." Click [here](#) for information on other preferences you can change in this area.



6. When you have entered your practice information, press the “**Save**” button, followed by the “**Close**” button.
7. **NOTE ABOUT PROBE TIPS:** A standard cotton swab (Q-tip brand or similar) with the tip cut off just below the cotton is the best tip for your AcuGraph probe. Insert the cotton tip into the AcuGraph probe with a twisting motion to ensure the cotton makes good contact with the metal of the probe. Also, for proper patient hygiene, use a new tip with each patient measured.

Congratulations!

Your AcuGraph system is ready for use!