

Power-Vent MODEL BTV-100

The A.O. Smith power-vent commercial gas water heater (BTV-100) is an excellent product option because of its installation flexibility. It permits horizontal "sidewall venting," with vent runs of up to 100 equivalent feet, using economical Type-B vent pipe.

REMOTE POWER-VENT KIT INCLUDED

- For safe, reliable operation, 24/120V power relay, adjustable post-purge timer and draft proven switch prevent gas valve from opening unless draft has been proven to the outside
- Factory pre-wired, with 40-foot cable for easy installation
- Uses low-cost Type-B vent pipe for economical installation

ADVANCED INTELLI-VENT™ GAS CONTROL

- Equipped with silicon nitride igniter for superior reliability
- Fully automatic, integrated control module and gas valve ensures safe, efficient operation
- Monitors all critical water heater functions, including water temperature (up to 180°F, 82.2°C), hot surface igniter, gas valve, flame sensing, energy cut-out and power-venter operation
- Easy-to-understand LED diagnostics for fast system troubleshooting and service

COREGARD™ ANODE ROD

- An A.O. Smith exclusive, with stainless steel core to provide glass-lined steel tank with longer-lasting protection against corrosion

HEAVY-DUTY CAST-IRON BURNER

HANDHOLE CLEANOUT

- For easy cleanout of sediment from tank bottom

FACTORY-INSTALLED TEMPERATURE & PRESSURE RELIEF VALVE

MAXIMUM HYDROSTATIC WORKING PRESSURE 160 PSI

ELECTRICAL CHARACTERISTICS

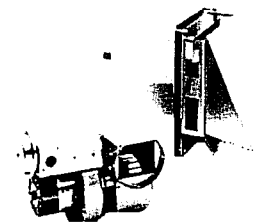
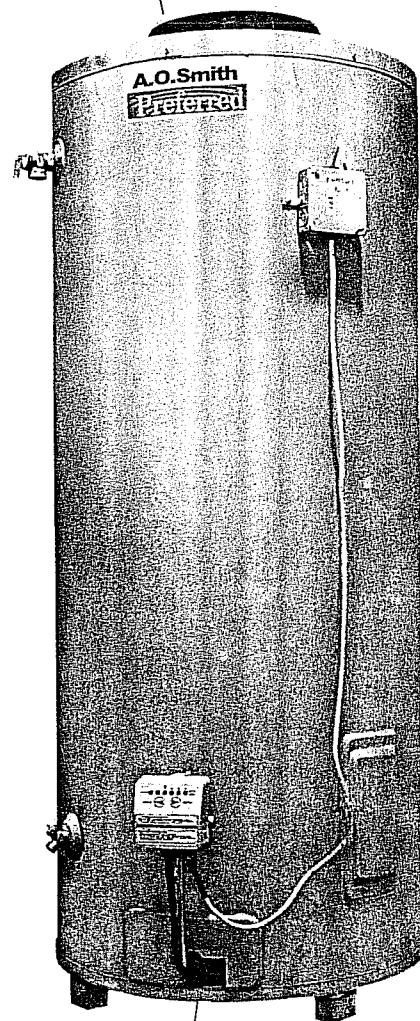
- 120/60 Volts/Hz
- <5 Amperes

CODES AND STANDARDS

- Complies with ANSI Z21.10.3
- Design-certified by CGA under CAN1-4.3
- Meets recovery efficiency requirements of ASHRAE/IESNA 90.1-1999 and provincial energy codes
- CUL certified, certified for use on combustible flooring and alcove installation

WARRANTY

- Three-year limited tank warranty
- For complete information, consult written warranty shipped with water heater, or contact A.O. Smith Water Heaters



POWER-VENT KIT INCLUDED



Power-Vent MODEL BTV-100

CAPACITY, INPUT AND RECOVERY CAPACITIES

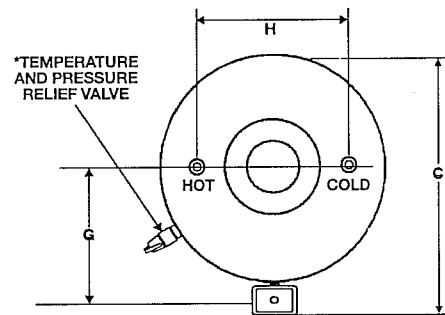
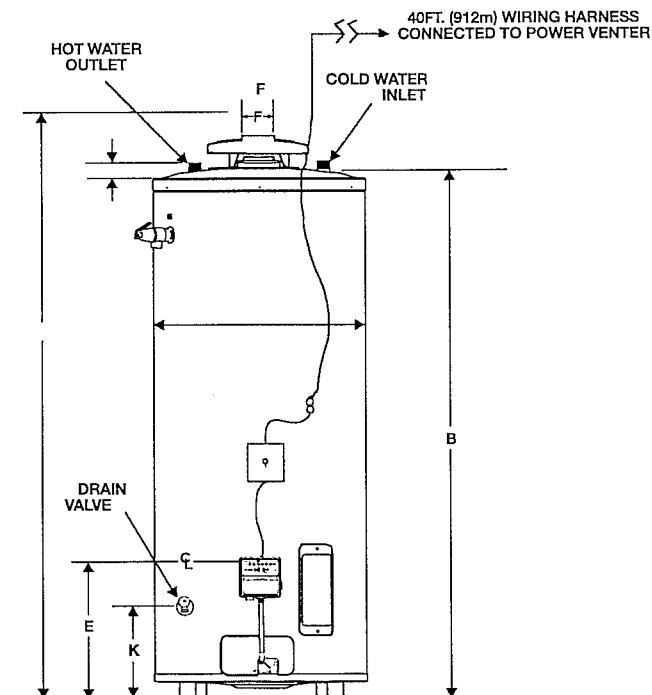
MODEL NUMBER	STORAGE CAPACITY		INPUT PER HOUR*		RECOVERY AT DEGREE RISE													
					°C RISE	17°	22°	28°	33°	39°	44°	50°	56°	61°	67°	72°	78°	
			BTU*	KW	°F RISE	30°	40°	50°	60°	70°	80°	90°	100°	110°	120°	130°	140°	
BTV-100	Gallons	98	78,000	22.9	GPH	246	184	147	123	105	92	82	74	67	61	57	53	
	Liters	371			LPH	930	698	558	465	399	349	310	279	254	233	215	199	

*Natural or Propane Gas

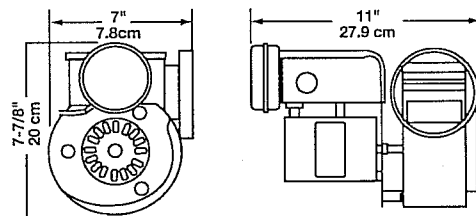
DIMENSIONS

MODEL NUMBER	DIMENSIONS											CONNECTIONS	
		A	B	C	D	E	F	G	H	J	K	WATER	GAS
BTV-100	Inches	69-3/4	66-1/2	29-11/16	26-1/2	15-3/16	4	14-1/2	16	1-1/4	11-5/16	1-1/4" NPT	1/2" NPT
	cm	177.2	168.9	75.4	67.3	38.6	10.2	36.8	40.6	3.2	30.3		

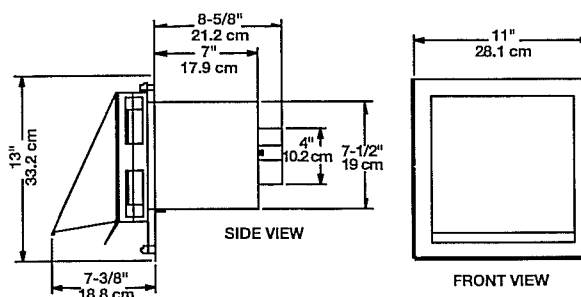
Manifold Pressure, Natural: 3.5 inches W.C., 0.87 kPa
 Manifold Pressure, Propane: 10.0 inches W.C., 2.49 kPa
 Maximum Supply Pressure: 14.0 inches W.C. (3.48 kPa)
 Minimum Supply Pressure, Natural Gas: 4.5 inches W.C. (1.12 kPa)
 Minimum Supply Pressure, Propane Gas: 11.0 inches W.C. (2.74 kPa)
 Minimum Pressures must be maintained under both load and no load (static and dynamic) conditions.



POWER VENTER



VENT HOOD



A.O. Smith Water Heaters

www.aosmithwaterheaters.com

500 Lindahl Parkway, Ashland City, TN 37015

For Technical Information and Automated Fax Service, call 800-527-1953.

A.O. Smith reserves the right to make product changes or improvements without prior notice.