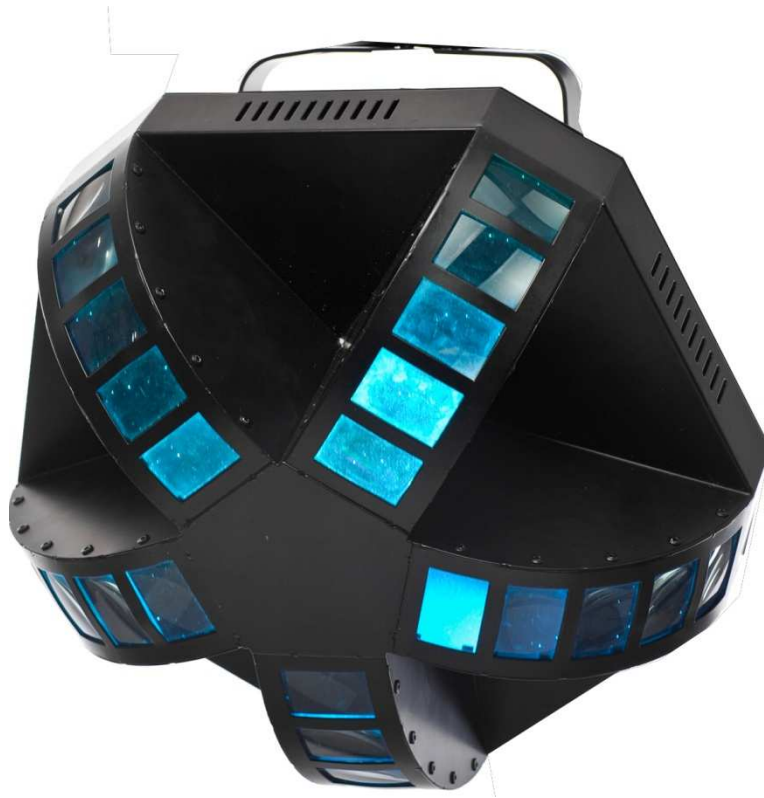


VARYTEC

User manual



DUKE

Table of content

1.	Safety instructions	3
1.1.	FOR SAFE AND EFFICIENT OPERATION	3
2.	Technical data	4
3.	Operation	4
3.1.	Functions via DIP	4
3.2.	Auto Mode	5
3.3.	Sound Mode	5
3.4.	Master/Slave Mode.....	5
4.	DMX Control	5

1. Safety instructions



- This device is suitable for indoor use only.
- All modifications to the device will void the warranty.
- Repairs are to carry out by skilled personnel only.
- Use only fuses of the same type and original parts as spare parts.
- Protect the unit from rain and humidity to avoid fire and electric shocks.
- Make sure to unplug the power supply before opening the housing.

1.1. FOR SAFE AND EFFICIENT OPERATION

Be careful with heat and extreme temperature

Avoid exposing it to direct rays of the sun or near a heating appliance.

Not put it in a temperature bellow 41°F /5°C, or ex ceeding 113°F /45°C.

Keep away from humidity, water and dust

Do not place the set in a location with high humidity or lots of dust.

Containers with water should not be placed on the set.

Keep away from sources of hum and noise

Such as transformer motor, tuner, TV set and amplifier.

To avoid placing on un-stable location

Select a level and stable location to avoid vibration.

Do not use chemicals or volatile liquids for cleaning

Use a clean dry cloth to wipe off the dust, or a wet soft cloth for stubborn dirt.

If out of work, contact sales agency immediately

Any troubles arose, remove the power plug soon, and contact with an engineer for repairing, do not open the cabinet by yourself, it might result a danger of electric shock.

Take care with the power cable

Never pull the power cable to remove the plug from the receptacle, be sure to hold the plug.

When not using the device for an extended period of time, be sure to disconnect the plug from the receptacle.

Important: Damages caused by the disregard of this user manual are not subject to warranty. The dealer will not accept liability for any resulting defects or problems. Make sure the electrical connection is carried out by qualified personnel. All electrical and mechanical connections have to be carried out according to the European safety standards.

2. Technical data

Power supply	90-250VAC, 50~60Hz
Power consumption	33W
Current	0.28A
Sound Control	Via built-in microphone
DMX512 connection	3 Pin XLR
Weight	4.85 Kg
Measurements	370 x 360 x 250 mm
Maximum ambient temperature	45°C
Maximum housing temperature	50°C
Fuse	F1A, 250V
Channel	3
Number of LEDs	2 x 9W

3. Operation

3.1. Functions via DIP

Function	DIP1	DIP2	DIP3	DIP4	DIP5	DIP6	DIP7	DIP8	DIP9	DIP10	MODE
Red	1	0	0	0	0	0	0	0	0	0	Auto (Master)
Green	0	1	0	0	0	0	0	0	0	0	Auto (Master)
Blue	0	0	1	0	0	0	0	0	0	0	Auto (Master)
Strobe slow	0	0	0	1	0	0	0	0	0	0	Auto (Master)
Strobe medium	0	0	0	0	1	0	0	0	0	0	Auto (Master)
Strobe fast	0	0	0	0	0	1	0	0	0	0	Auto (Master)
Motor mode	0	0	0	0	0	0	1	0	0	0	Auto (Master)
Auto	0	0	0	0	0	0	0	1	0	0	Auto (Master)
Sound Control	0	0	0	0	0	0	0	0	1	0	Sound Control (Master)
Master/Slave	0	0	0	0	0	0	0	0	0	1	Auto (Master)

3.2. Auto Mode

In order to select Auto mode, set DIP switch 1 to 10 to OFF, set DIP switch 8 to ON.

3.3. Sound Mode

In order to select Sound Control Mode, set DIP switch 1 to 10 to OFF, set DIP switch 9 to ON.

3.4. Master/Slave Mode

In order to select Master/Slave Mode, set Auto Mode or the Sound Control Mode from DIP switch 1 to 9 to OFF, set DIP switch 10 to ON. In Master/Slave operation one unit will act as the controlling unit and the others will react to the controlling unit's built-in programs.

4. DMX Control

Channel	Value	Function
CH1	000-004	LED Close
	005-028	Red
	029-056	Green
	057-084	Blue
	085-112	Blue/Green
	113-140	Red/Blue
	141-168	Green/Red
	169-197	Red/Green/Blue
	198-224	Tri color chase automatically
	225-255	Seven color chase automatically
CH2	000-004	No strobe
	005-255	Strobe from slow to fast
CH3	001-127	Motor positive rotation
	128-255	Motor reversion rotation from slow to fast

Importer:

B & K Braun GmbH

Industriestraße 1

D-76307 Karlsbad

www.bkbraun.com

info@bkbraun.com

