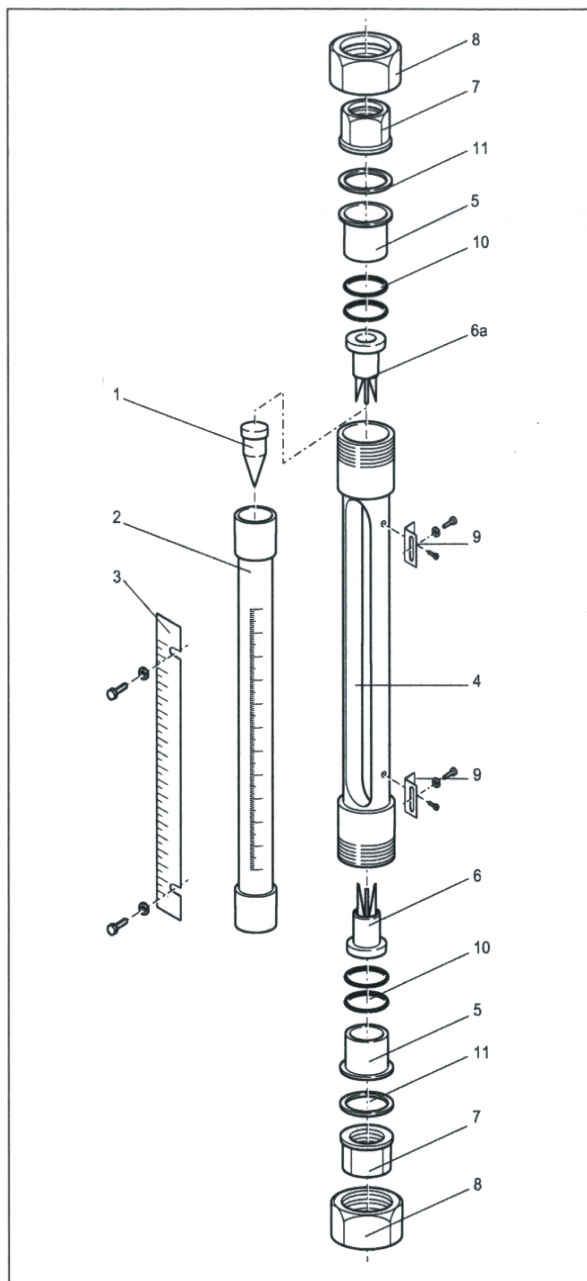


- Unpacking** : All packaging material must be removed. The transport securing device of the float must be removed. If the float is packed separately, take off the top bolted joint and the top stop and then insert the float into the measuring tube.
- Assembling position** : Vertical
- Hints for Assembly** : Assemble tension-free! The connection tubes must be aligned. With flanges make sure the screw holes are in line. Avoid vibration. If necessary, support the tubes in front of and behind the Rotameter with braces. Avoid large volumes of gas downstream and upstream of the float (vibration due to compression).
- Commissioning** : When functioning properly, the float (1) rotates freely in the flow. With major floats made of plastic or metal, this can easily be seen in their rotation. If the float does not rotate, either the device is soiled or the vertical assembly requirement has been disregarded. This only applies to floats with notches. The scale mark to which the float adjusts its top edge is decisive for reading.
- Maintenance** : To clean the rotameter, remove it from the tube. After the removal of the two stops (6, 6a) and the float (1), the measuring tube (2) can be cleaned without removing it from the fitting. For cleaning we recommend using a bottle brush and soap and water solution. Make sure the measuring tube does not get scratched. If the float or the measuring tube show signs of wear and tear, we recommend replacing them. To remove the tube, take off the stops (6, 6a) and the float and then press the tube out of its O-ring support (5) using a cylindrical plastic tube. The diameter of the cylindrical plastic tube corresponds to the external diameter of the measuring tube. Reassemble the parts in reverse order.
- Safety hints** : The measuring tube is made of glass and therefore fragile. Avoid any damage coming from the outside. The specified maximum pressures must not be exceeded. Pressure peaks must not exceed the specified maximum pressure either. Pressure shock may hit the float against the top stop (6a) with high speed. This may result in the destruction of the stop and the measuring tube. Tension in the glass over 6N/mm<sup>2</sup> have to be avoided. Therefore the temperature difference in the glass may not exceed 40°C. Please avoid temperature shocks. ROTA YOKOGAWA gives no warranty for the improper use of flow meters having glass floats. Due to the uncontrollability of the material YOKOGAWA cannot guarantee that the material is fracture-proof. Further hints can be found in VDI/VDE 3513.
- Caution** : **The metering tube, the float and the scale must always be kept together.**

Units with limit switches /GM1...GM2 : See instruction manual IM 1R1B19-E-H.



Position	Quantity	Description
1	1	Float
2	1	Metering Tube
3	1	Exchangable scale
4	1	Jacket fitting
5	2	O-ring holder
6	1	Bottom stop
6a	1	Top Stop
7	2	Insertion parts
8	2	Sleeve nuts
9	2	Scale holder
10	4	O-rings
11	2	Gasket

T1.EPS

**EUROPEAN HEADQUARTERS**  
Yokogawa Europe B.V.  
Databankweg 20  
3821 AL AMERSFOORT  
The Netherlands  
Tel. +31-33-4641 611  
Fax +31-33-4641 610  
E-mail: info@yokogawa.nl  
www.yokogawa-europe.com

**THE NETHERLANDS**  
Yokogawa Nederland B.V.  
Hoofdveste 11  
3992 DH HOUTEN  
Tel. +31-30-635 77 77  
Fax +31-30-635 77 70

**AUSTRIA**  
Yokogawa Ges.m.b.H.  
Central East Europe  
Franzosengraben 1  
A-1030 WIEN  
Tel. +43-1-206 340  
Fax +43-1-206 34 800

**BELGIUM**  
Yokogawa Belgium N.V./S.A.  
Minervestraat 16  
1930 ZAVENTEM  
Tel. +32-2-719 55 11  
Fax +32-2-725 34 99

**NORTHERN EUROPE**  
Yokogawa Nordic A.B.  
Finlandsgatan 52, 2fl  
SE-164 74 Kista  
STOCKHOLM  
Tel. +46-8-477-1900  
Fax +46-8-477-1999

**FRANCE**  
Yokogawa France S.A.  
Vélizy Valley  
18-20 Rue Grange Dame Rose  
78140 VELIZY VILLACOUBLAY  
Tel. +33-1-39 26 10 00  
Fax +33-1-39 26 10 30

**GERMANY**  
Yokogawa Deutschland GmbH  
Berliner Strasse 101-103  
D-40880 RATINGEN  
Tel. +49-2102-4983 0  
Fax +49-2102-4983 22

**HUNGARY**  
Yokogawa Hungaria Ltd.  
Alkotás Center 39 C  
1123 BUDAPEST  
Tel. +36-1-355 3938  
Fax +36-1-355 3897

**ITALY**  
Yokogawa Italia S.r.l.  
Vicolo D. Pantaleoni, 4  
20161 MILANO  
Tel. +39-02-66 24 11  
Fax +39-02-645 57 02

**SPAIN/PORTUGAL**  
Yokogawa Iberia S.A.  
C/Francisco Remiro, N°2, Edif. H  
28028 MADRID  
Tel. +34-91-724 20 80  
Fax +34-91-355 31 40

**UNITED KINGDOM**  
Yokogawa United Kingdom Ltd.  
Stuart Road, Manor Park,  
RUNCORN  
Cheshire WA7 1TR  
Tel. +44-1-928 597100  
Fax +44-1-928 597101

**AUSTRALIA**  
Yokogawa Australia Pty Ltd.  
Private mail bag 24  
Centre Court D3  
25-27 Paul Street North  
NORTH RYDE, N.S.W. 2113  
Tel. +61-2-805 0699  
Fax +61-2-888 1844

**SINGAPORE**  
Yokogawa Engineering Asia Pte. Ltd.  
11, Tampines Street 92  
SINGAPORE, 528872  
Tel. +65-783 9537  
Fax +65-786 2606

**Manufactured by:**  
**GERMANY**  
Rota Yokogawa GmbH & Co. KG  
Rheinstrasse 8  
D-79664 WEHR  
Tel. +49-7761-567 0  
Fax +49-7761-567 126

**SOUTH AFRICA**  
Yokogawa South Africa (Pty) Ltd.  
67 Port Road, Robertsham  
Southdale 2135, JOHANNESBURG  
Tel. +27-11-680-5420  
Fax +27-11-680-2922

**UNITED STATES OF AMERICA**  
Yokogawa Corporation of  
America  
2 Dart Road  
NEWNAN, GA 30265-1040  
Tel. +1-770-253 70 00  
Fax +1-770-251 28 00

ISO 9001



**CENTRAL/EAST REGION**  
Via Yokogawa Ges.m.b.H.:  
Czechia, Slovakia, Poland,  
Croatia, Slovenia, Yugoslavia,  
Bulgaria, Romania, Macedonia,  
Bosnia & Herzegovina

**Distributors in:**  
Denmark, Finland, Greece,  
Norway, Portugal, Russian  
Federation, Sweden,  
Switzerland and Turkey.

**YOKOGAWA** ◆

IM 1R1B5-E-H