



CellBox-Lite
Installation and Operation Manual v3.0

NOTICE

This is the Installation and Operation Manual for the CellBox-Lite.

All rights reserved. No part of this document may be reproduced or transmitted in any form, by any means (electronic, photocopying, recording, or otherwise) without the prior written permission of ITS.

The trademark and service marks ITS, including the ITS mark and logo, are the exclusive property of ITS, and may not be used without permission. All other marks mentioned in this material are the property of their respective owners.

Additional copies of this manual may be obtained from ITS.

ITS reserves the right to modify the hardware and software described in the manual without prior notice. However, changes made to the hardware or software described does not necessarily render this publication invalid.

WARRANTY

In the event that the product proves to be defective in workmanship or materials within a period of one year from date of shipment, ITS shall repair or replace the product at its discretion. Transportation will be the responsibility of the dealer/distributor. **Under no circumstances shall ITS be liable for consequential or special damages, loss of revenue or user/dealer expenses arising out of or in connection with the use or performance of the product, whether based on contract, tort, or any other legal agreement.**

The following shall void the above warranty: malfunctions resulting from fire, accident, neglect, abuse, or acts of God; use of improper electrical power; or repair of, tampering with or alteration of the product by anyone other than ITS authorized personnel

Table of Contents

1.	Introduction	1
1.1	Manual Audience and Contents	1
1.2	System Description	2
1.2.1	General Description	2
1.2.2	Physical Description	3
1.2.3	Technical Data	4
1.2.3.1	Programming Cable Specifications	4
1.2.3.2	PBX Cable Specifications	5
1.2.3.3	Technical Specifications	5
2.	Installation	7
2.1	Unpacking	7
2.2	CellBox-Lite SIM Card Installation and Setup	7
2.2.1	Preparation and Requirements	7
2.2.2	SIM Card Insertion in the CellBox-Lite Unit	8
2.3	CellBox-Lite Physical Installation	9
3.	CellBox-Lite LED Status Indicators	10
4.	CellBox-Lite Usage	11
4.1	Call Back (Remote Extension)	12
4.2	Call Through (VPN Users)	13
4.3	Extension Gateway (Internal Users)	13
5.	The CellBox Utility Program (CUP)	14
5.1	Installation of the CellBox Utility Program	15

5.2	CUP Startup Screen.....	16
5.2.1	Menu and Toolbar Description.....	17
5.3	The File Menu	18
5.3.1	New.....	18
5.3.2	Open	19
5.3.3	Save	19
5.3.4	Save As.....	20
5.3.5	Print Settings Menu	20
5.3.6	Print	21
5.3.7	Print Preview	22
5.3.8	Print Setup	23
5.3.9	Exit	23
5.4	The Communication Menu.....	24
5.4.1	Read Parameters	24
5.4.2	Send Parameters	25
5.4.3	Password.....	27
5.4.4	COM Port	28
5.5	The Users Menu	29
5.5.1	Creating New Users.....	30
5.5.2	Editing Users	32
5.5.3	Deleting Users	32
5.6	The Parameters Menu.....	32
5.6.1	Control Parameter.....	33
5.6.2	Date & Time	34
5.6.3	Restrictions (Users)	35
5.6.4	Restrictions for the Extension Gateway	38
5.7	Call Divert.....	40
5.8	Advanced Settings.....	42
5.9	GSM Parameters	42
5.10	SMS Notification.....	44

5.11	Help	45
5.11.1	Help Topics	45
5.11.2	About CUP	45
5.11.3	Firmware Version	46
6.	CellBox Utility Program Quick Reference Guide	47
6.1	Create New User	47
6.2	Edit User	48
6.3	Delete User	48
6.4	Restriction Settings (Users)	49
6.5	Restriction Settings (Extension Gateway)	49
6.6	Date&Time Setting	51
6.7	Control Parameter Setting	51
6.8	Call Divert Setting	52
6.9	Advanced Settings	52
6.10	GSM Parameter Settings	53
6.11	SMS Notification Settings	53
7.	CellBox-Lite Access Quick Reference Guide	54
7.1	Accessing the CellBox-Lite	54
7.1.1	From your mobile phone by dialing	54
7.1.2	From your mobile phone with SMS (1)	54
7.1.3	From your mobile phone with SMS (2)	55
7.1.4	From the telephone in the Office	55

This page has been left blank intentionally

1. Introduction

1.1 Manual Audience and Contents

The *CellBox-Lite Installation and Operation Manual* is intended for System Installers and Administrators, responsible for the installation, setup and programming of the CellBox-Lite.

Notes:

Please read this manual before the installation, programming and operation of the CellBox-Lite.

This manual contains the following:

Chapter	Heading	Chapter	Heading
1	Introduction	5	CellBox Utility Program (CUP)
2	Installation	6	CellBox Utility Program Quick Reference Guide
3	CellBox-Lite LED Status Indicators	7	CellBox-Lite Access Quick Reference Guide
4	CellBox-Lite Usage		

1.2 System Description

1.2.1 General Description

The CellBox-Lite unit is a new member of the ITS GSM family of Products. The CellBox-Lite unit is:

- A GSM Call Back system
- A Call Through system
- A GSM Extension Gateway on the analog extension

The Call Back and Call Through functions give the users outside the office a possibility to make phone calls as if they are in the office, reducing their mobile phone costs.

The Extension Gateway function gives the users in the office a possibility to contact GSM mobile phone users as if they are calling within a mobile network, eliminating the fixed connection costs.

The following picture shows a basic configuration:

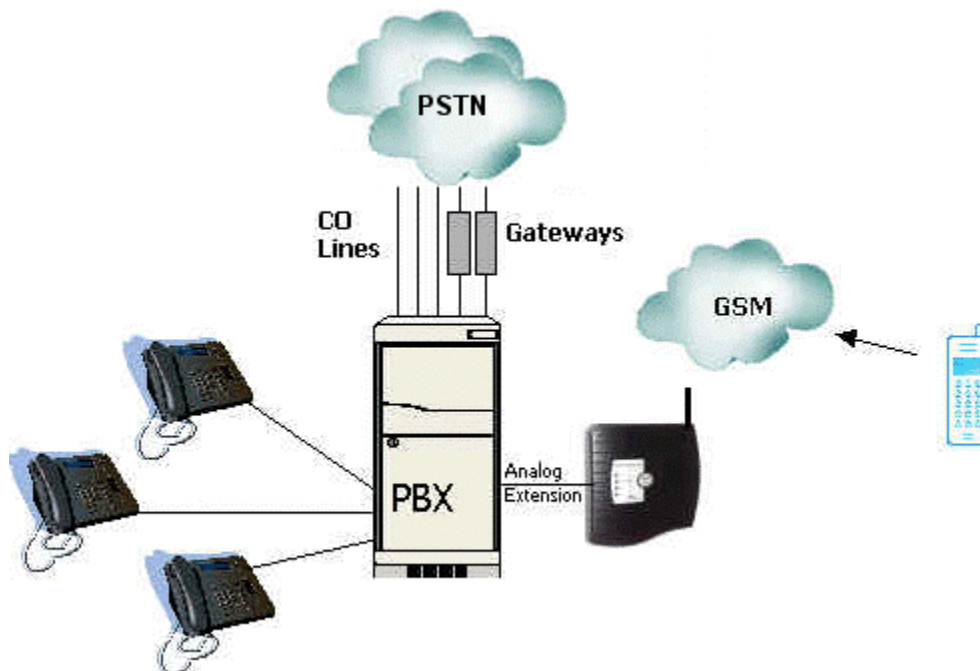


Figure 1-1: Basic Configuration

Main Features

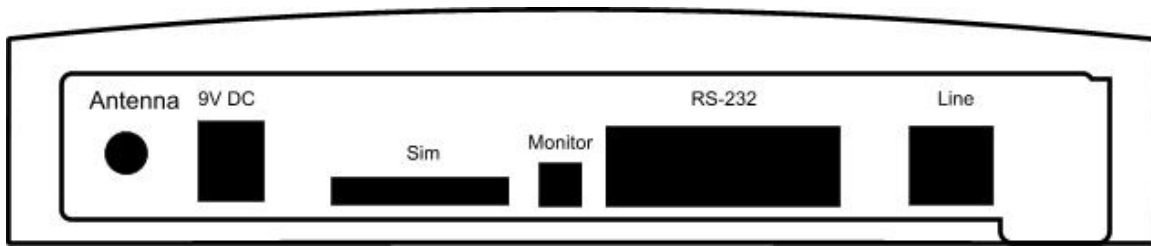
- Dual band GSM module (900/1800 or 850/1900 MHz)
- Programmable via Windows-based utility program (CUP)
- Signal strength indicator
- Supports up to 50 registered users per unit
 - Prefix restrictions per user
 - Minutes per month usage limitations per user
- Extension Gateway

1.2.2 Physical Description



Figure 1-2: Front Panel View

The four LEDs on the front panel indicate the signal level in 4 steps (each step 25%) and provide an error indication (see *Chapter 3 CellBox-Lite LED Status Indicators*).



Description of the Side Panel:

Antenna	Antenna connection
9VDC	Power Supply connection
Sim	SIM card holder
Monitor	Green LED for Cellular engine status
RS-232	RS-232C cable connection
Line	Connection to Analog Extension of PBX

The serial connector in the CellBox-Lite provides the user with the interface to program and administrate the unit via a PC.

1.2.3 Technical Data

1.2.3.1 Programming Cable Specifications

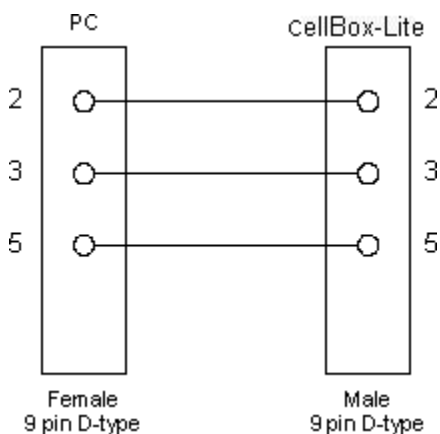


Figure 1-3: RS-232 cable for connection between CellBox-Lite and PC

1.2.3.2 PBX Cable Specifications

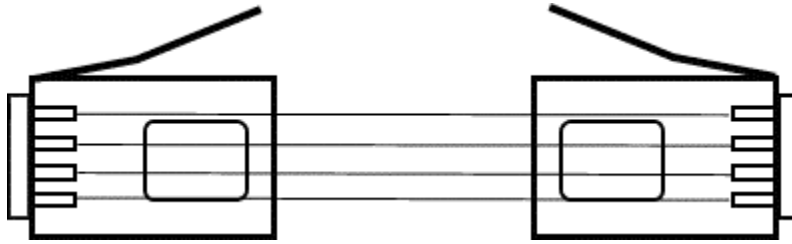


Figure 1-4: RJ-11 cable for connection between PBX and CellBox-Lite

1.2.3.3 Technical Specifications

Model	CellBox-Lite
GSM Network Type	GSM Phase II
GSM Module	Integrated Dual Band (900/1800 or 850/1900 MHz)
SIM card	Plug-in, 3V or 5V, small
Transmission Power	Max. 2W / 850 MHz Max. 2W / 900 MHz Max. 1W / 1800 MHz Max. 1W / 1900 MHz
Receiver Sensitivity	-104 dBm
Line Voltage	24 to 72V DC
DC Leakage Current	<10 μ A
On-hook Insulation, resistance between Line Terminal and the ground	0 to 100V DC > 5M 100 to 200V DC > 30K 500 VAC / 50Hz > 20K 100 VAC / 25Hz > 100K
Ring Capacitor	0.47 μ F \pm 10%
On-hook Impedance	@ 50V DC, 40 VAC / 25Hz > 3000 Ω
Ring Detect	27 to 100 VAC / 16 to 60Hz
DC Resistance_(off-hook)	24 to 66V DC @ 20 to 100mA 100 to 350 Ω
Impedance_(off-hook)	300 to 3400Hz 500 to 700 Ω

Connectors

RS-232 Connector – D-Type 9 pin
Power Supply Connector – DC Power Jack
Antenna Connector – SMA Female
Line Interface Connector – RJ-11

Power Supply

Input:

110VAC, 60Hz
220VAC, 50Hz

Output

9VDC, 800mA

Temperature Range

0°C-45°C /32°F-113°F

Maximum Relative Humidity

95%

Dimensions (HxWxD)

200x220x30mm
7.9x8.7x1.2 inch

2. Installation

2.1 Unpacking

The following table describes the contents of the CellBox-Lite package.

Note:

Should the package be damaged or should items from the packing list be missing, contact your distributor directly.

Nr.	Item	Quantity
1	CellBox-Lite	1
2	Installation CD with CUP software and Manual in PDF format	1
3	Power Supply (Input: 110VAC, 60Hz or 220VAC, 50Hz)(Output 9VDC, 800mA)	1
4	Antenna (with cable)	1
5	RS-232C cable (D-Type 9 pin male – D-Type 9 pin female)	1
6	PBX connection cable (RJ-11 – RJ-11)	1
7	Screws and plugs for wall mounting	2
8	Template for wall mounting	1

2.2 CellBox-Lite SIM Card Installation and Setup

2.2.1 Preparation and Requirements

The CellBox-Lite unit can be seen as a GSM cell phone. It therefore needs a SIM card from the local GSM network provider on the main board. Its registration to the GSM operator is similar to the registration of a mobile GSM phone.

The PIN code request must be off. Is this not the case, use any GSM mobile phone to modify the SIM card setup or contact the local GSM operator.

The PIN code can also be inserted with the CUP program. (See Chapter 5.6)

Note:

We recommend disabling all call forwarding modes (in the events of busy, absence, unavailability, etc.) and Call Waiting from the GSM operator, before installing the SIM card. Additionally, all existing SMS messages in the SIM card need to be deleted, before inserting the card into the unit.

2.2.2 SIM Card Insertion in the CellBox-Lite Unit

Caution

To avoid damage to the CellBox-Lite unit, the 9V adapter should be disconnected from the electric power-outlet.

- Carefully remove the side panel from the CellBox-Lite unit.
- Use a pointed screwdriver to push the yellow SIM release lever, so that the SIM card tray moves towards you.
- Take out the tray. You will see that the SIM card will fit in the tray in one way.
- Now carefully place the tray with the SIM card in the slot and slide it in with the SIM card contacts facing down.

2.3 CellBox-Lite Physical Installation

- Place the CellBox-Lite unit on the wall.
- Connect the external Antenna via the external antenna cable into the Ant. connector on the side panel of the CellBox-Lite unit. *
- Connect the analog extension interface of the PBX to the RJ-11 connector on the side panel of the CellBox-Lite unit.
- Connect the power supply to the CellBox-Lite unit.
- The unit will start the initialization and registration. At the end of the process, the LEDs on the front panel of the CellBox-Lite unit will display the GSM signal status**.

Notes:

*Experiment with the location of the antenna. The LEDs gives an indication where you get the best GSM reception.

**During the initialization process, the LEDs will light up one after another for a few times. Should after the initialization process the LEDs Flash, an error has occurred (*see Chapter 3 CellBox-Lite LED Status Indicators*). 1 or 2 LEDs lit indicate a bad reception.

An additional green LED on the side panel will provide the installer/administrator with information on the status of the Cellular engine:

LED on	Engine powered up, without network registration
LED flashing slowly	Registration OK - Idle mode
LED flashing fast	Conversation active

3. CellBox-Lite LED Status Indicators

Led 1	Led 2	Led 3	Led 4	Error description	Solution
Flashing	Flashing	Flashing	Flashing	GSM engine problem	Power off and on the unit. Refer to your local supplier.
Flashing	Off	Off	Off	No Signal or Signal low (less than 25%)	Check your antenna connection. Move your antenna to a location with a better reception. Check with your GSM operator.
Flashing	Off	Off	Flashing	Registration denied	Contact your local GSM operator.
Off	Flashing	Off	Off	PIN error	Disable PIN code on SIM Card (see section 2). Contact your local GSM operator.
Off	Off	Off	Flashing	No SIM card inserted*	Insert SIM card.
Off	Off	Flashing	Flashing	Call Center/Service Center Number error	Check the Call Center/Service Center Number with your local operator. Enter the correct number in SIM card.

Note:

* Turn off the CellBox-Lite when the SIM card is not inserted.

4. CellBox-Lite Usage

The administrator will define the users in the CellBox-Lite database and provide him with the number of the CellBox-Lite unit (e.g. the SIM Card number).

As another pre-condition, the Caller ID information (CLIP) needs to be activated on the GSM cell phone. This enables the CellBox-Lite unit to check the CLI of the incoming call with the authorized users in the database and respond with the correct reaction.

Should the CellBox-Lite unit receive a call without a CLI or with an unauthorized CLI, it will not answer.

The remote user can connect to the CellBox-Lite unit by calling or sending an SMS message to the number, provided by the local operator. Both methods will be described in the following paragraphs.

The CellBox-Lite unit maintains a user authorization database, in which the following information is stored:

- User name
- SMS password
- User phone number
- Prefix restrictions – limitations to unit usage
- Number of minutes per month – limitations to unit usage
- Answer to CLI – for Call Through (VPN users)
- Call Back

Authorized GSM Mobile phone users will be able to activate the Call Back or Call Through function as defined in the database.

The CellBox-Lite can also be used as an extension gateway. Restriction for this usage can be inserted via the CUP program.

4.1 Call Back (Remote Extension)

Option A: When an authorized GSM mobile phone user calls the CellBox-Lite, the CellBox-Lite:

- Checks for the Caller ID information
- Verifies the Caller ID with the information in the database.
- “Disconnects without answer”
- Calls back the user
- Provides the user with the internal dial tone from the PBX (Remote Extension)

Now the user can dial to any destination, as if he is calling from his office telephone.

Option B1: When an authorized GSM mobile phone user sends an SMS message to the CellBox-Lite, the CellBox-Lite:

- Analyzes the SMS message (password).

If the user is permitted to use the CellBox-Lite, then the CellBox-Lite:

- Calls the user
- Provides the user with the internal dial tone from the PBX (Remote Extension)

Now the user can dial to any destination, as if he is calling from his office.

Option B2: When an authorized GSM mobile phone user sends an SMS message and a telephone number to the CellBox-Lite, the CellBox-Lite:

- Analyzes the SMS message (password).

If the user is permitted to use the CellBox-Lite, then the CellBox-Lite:

- Calls the user
- Automatically dials the telephone number specified in the SMS message

The format is:

SMS code + Number

Notes:

Should the CellBox-Lite be busy at the time you are initiating the Call Back function, the unit will automatically send you an SMS message, indicating that it is busy and to try later.

When sending the SMS message (with or without telephone number) to the CellBox-Lite, it is not important whether you use uppercase or lowercase characters.

4.2 Call Through (VPN Users)

When an authorized GSM Mobile phone user calls the CellBox-Lite, the CellBox-Lite:

- Checks for the Caller ID information
- Verifies the Caller ID with the information in the database.
- Answers and provides the user with a dial tone

Now the user can dial to any destination, as if he is phoning from his office telephone.

4.3 Extension Gateway (Internal Users)

When a user in the office wants to call a GSM mobile phone user:

- The user dials the extension number of the CellBox-Lite
- The CellBox-Lite answers and provides the user with a dial tone
- The CellBox-Lite checks the dialed digits (DTMF) and analyses them. If the prefix appears in the restricted numbers list, the call is terminated. If not, the user is connected to the requested number.

5. The CellBox Utility Program (CUP)



The CellBox Utility Program provides the administrator with a user-friendly interface to program and update the CellBox-Lite unit.

Before installing the software, connect the laptop or PC via the RS-232 cable to the CellBox-Lite unit.

After programming the CellBox-Lite, the laptop or PC can be disconnected from the unit.

In this chapter you will come across references to default parameters. The following is a list of those default parameters:

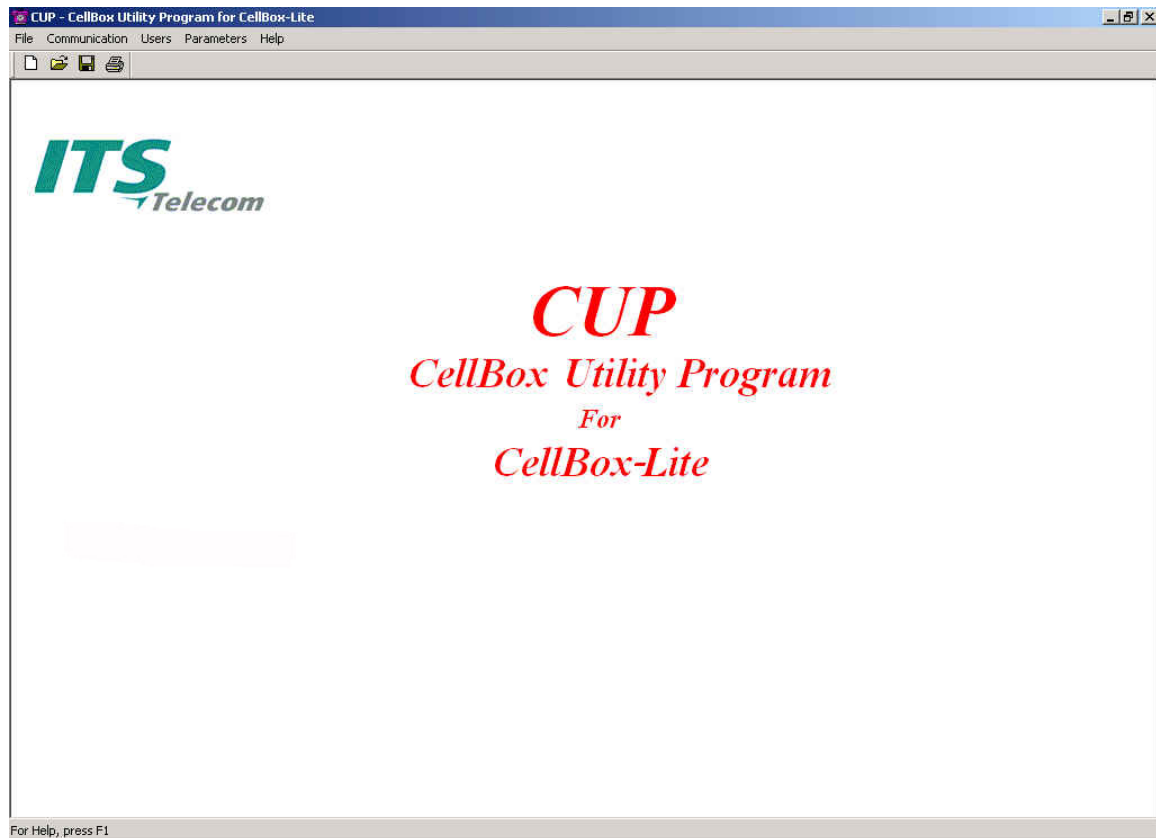
Description	Default Setting
Print Setup	Based on the printer setting made in Windows.
Administrator Password	1234
Communication Port	COM1
Control Parameter	###
DTMF level	8
User List	Empty
Allow only registered users	Marked
Call Limitations	None
Call Divert	None
Show CLIR	Yes
Roaming	No
Extension Gateway Restrictions	Deny all
SMS Notification	Disabled

5.1 Installation of the CellBox Utility Program

- Place the installation CD in the CD-ROM drive of the computer
- Click on the CUP software installation option in the menu
- Follow the instruction on your screen
- After the installation, start the CUP program via Start/Programs

5.2 CUP Startup Screen

The initial window of the CUP (CellBox Utility Program) provides the administrator with a menu bar and a toolbar. This window is the starting point for all maintenance (e.g. adding, editing, deleting users, setting up schedules, setting up system parameters, etc.).







5.2.1 Menu and Toolbar Description

Menus

Function	Description
File	Provides functions to Create (New), Open, Save, Save As, Define what to Print, Print, Print Preview a CellBox-Lite configuration file. This menu also contains the Print Setup, The Recent File and the Exit function.
Communication	Provides the Communication window with Read and Send parameters, Password and COM Port selection.
Users	Provides the Users List window.
Parameters	Provides the Parameters window with Control Parameter, Date & Time, Restrictions (Users & Extension Gateway), Call Divert, Advanced Settings, GSM Parameters and SMS Notification
Help	Provides the functions for Help Topics, About CUP and Device Version.

Toolbar

Function	Description
	New – Creates a new CUP configuration file, based on the default settings.
	Open – Opens a CUP configuration file.
	Save – Saves a CUP configuration file.
	Print – Prints the contents of the current CUP configuration file.

5.3 The File Menu

The File Menu provides you with the following options:

Function	Description
New	Creates a new CUP configuration file, based on the default parameters.
Open	Opens a CUP configuration file.
Save	Saves a CUP configuration file.
Save As	Saves a CUP configuration file with a different name and/or in a different directory.
Print Settings Menu	Gives a choice of specific parameters that can be printed (e.g. All, Users List, Control Parameter).
Print	Prints the contents of the current CUP configuration file.
Print Preview	Shows a preview of the information to be printed.
Print Setup	Gives a screen to setup the printer for printing.
Recent File	Shows the recently used files.
Exit	Exits the CUP program.

Note

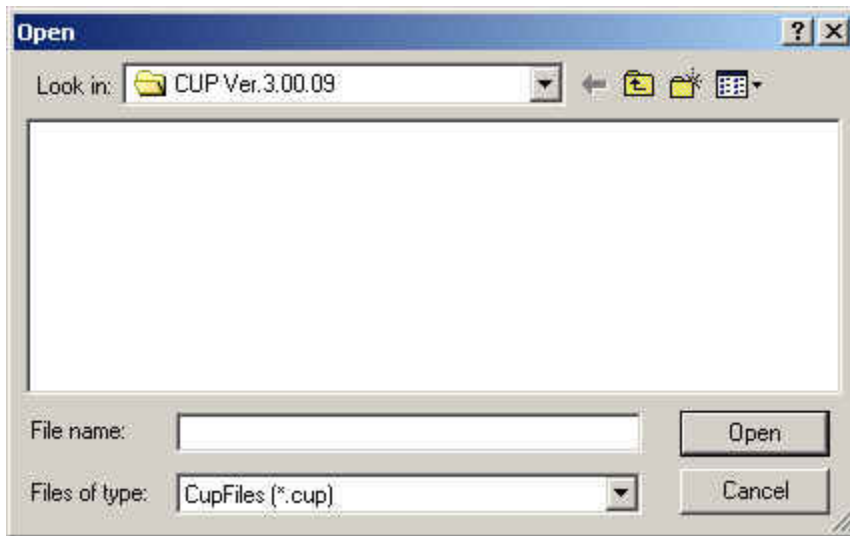
The File Menu contains standard functions, which will be described briefly in the following paragraphs. This is contrary to the functions in the other menus, which are described in more detail.

5.3.1 New

The File/New function (or the New button on the Toolbar) automatically creates a new CUP configuration file in which defaults have been filled in. Though before replacing the current file, an opportunity is given to save changes made.

5.3.2 Open

The File/Open function (or the Open icon on the Toolbar) gives a standard File/Open window, in which the file can be browsed for and/or selected. The Open button will load the CUP configuration file into the CUP program.

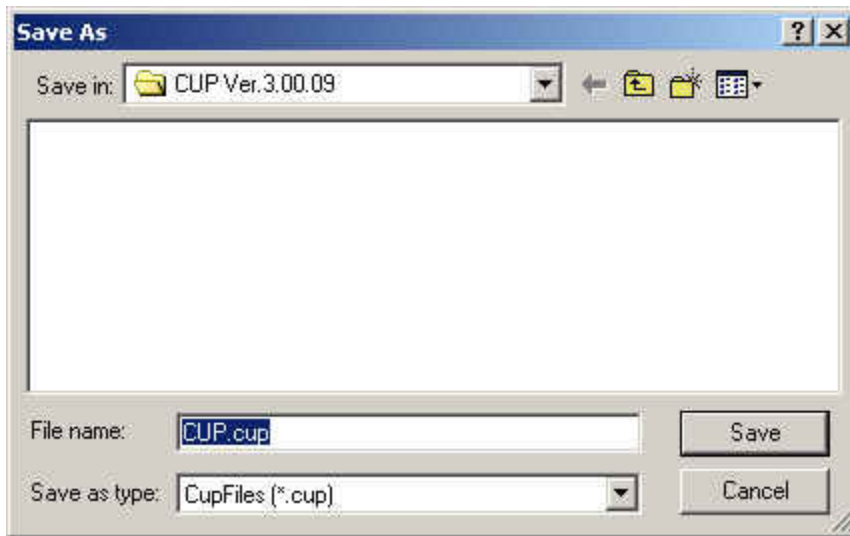


5.3.3 Save

The File/Save function (or the Save icon on the Toolbar) saves the current file in the location it was opened from. Should the file be a new file, pressing the File/Save function (or the Save icon on the Toolbar) will automatically provide the Save As window.

5.3.4 Save As

The File/Save As function opens a standard File/Save As window, in which the file location can be determined and the name of the file can be defined. The Save button will save the CUP configuration file with the specified name in the specified directory.



5.3.5 Print Settings Menu

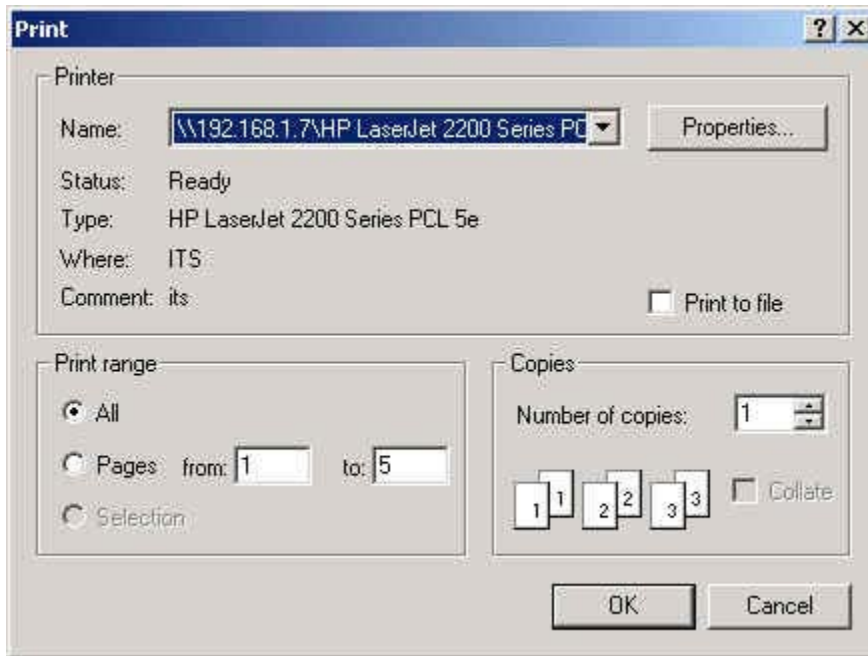
The File/Print Settings Menu function gives another menu, from which the parameters that need to be printed can be chosen.



After marking the required parameter, the File/Print function will give the chosen printout.

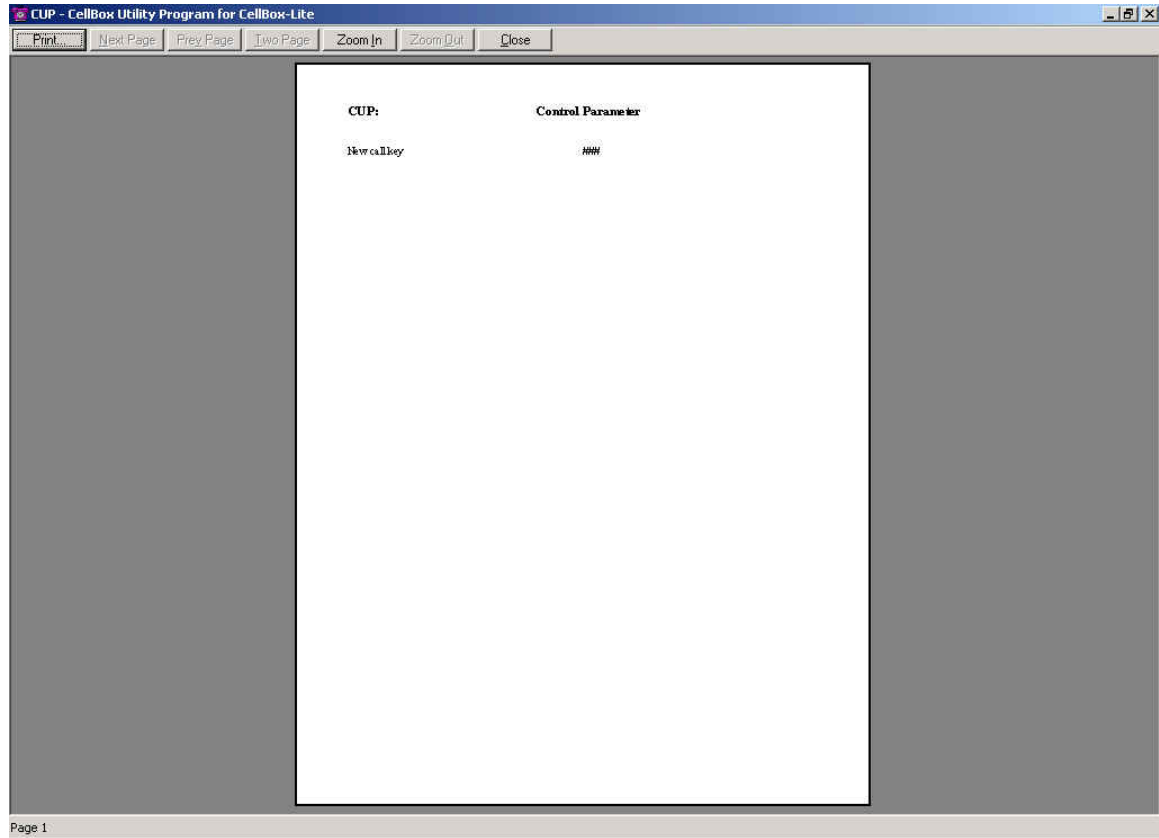
5.3.6 Print

The File/Print function opens a standard File/Print window, in which a number of parameters can be changed for the current print job. Parameters are: Printer selection, what to print, number of copies, method of printing multiple copies, etc. Clicking on OK will give you a printout. The Print icon on the Toolbar prints a file with the default parameters defined in the CellBox Utility Program.



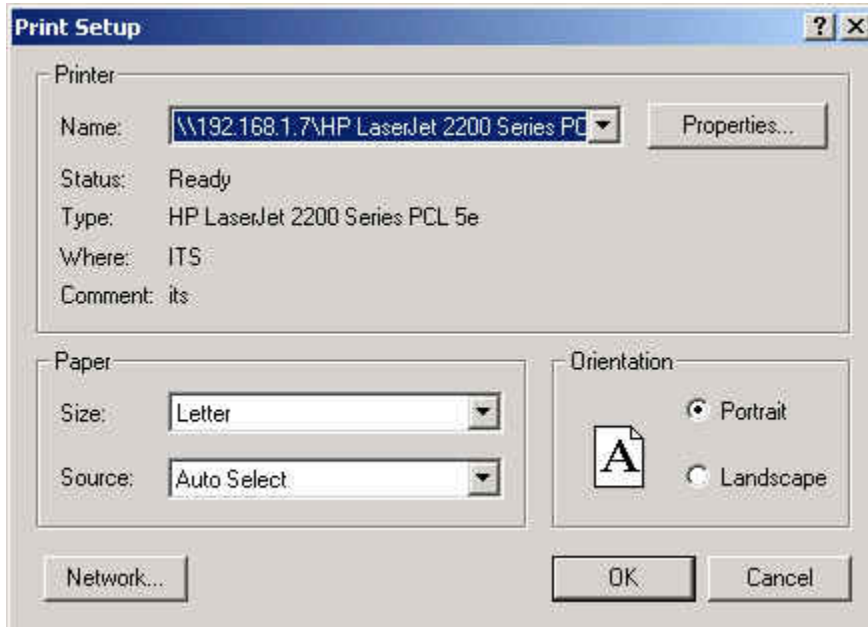
5.3.7 Print Preview

The File/Print Preview function shows a Preview of the CUP configuration file's printable information. In this window the standard functions, like zoom, can be used.



5.3.8 Print Setup

The File/Print Setup function provides a window, in which the default settings for the printer and the standard printer can be chosen. This information will then be used as default in the CUP program.



5.3.9 Exit

The File/Exit function closes the CUP program. Though before closing the current file and the program, an opportunity is given to save CUP configuration file.

5.4 The Communication Menu

The Communication Menu provides you with the following options:

Function	Description
Read Parameters	Reads the current parameters of the CellBox-Lite and downloads them to the CUP program.
Send Parameters	Sends the defined parameters to the CellBox-Lite.
Password	Provides the possibility to change the administrator's password.
COM Port	Provides the possibility to choose the Serial port through which you are communicating with the CellBox-Lite.

The administrator's password has to be filled in when reading or sending parameters.

5.4.1 Read Parameters

The current parameters in the CellBox-Lite unit will be downloaded into the CUP program by activating Communication/Read Parameters. The following window appears:



Button Description	
OK	Start reading the current parameters from the CellBox-Lite and load them into the CUP program.
Cancel	Cancel the Read Parameters function and return to the main screen.
Help	Start the Help.

5.4.2 Send Parameters

With Sending Parameters, the current information in the CUP program will be uploaded to the CellBox-Lite unit. Use Communication/Send Parameters and the following screen will appear:



Field Details

Enter Password	Enter the current password.
----------------	-----------------------------

Button Description

OK	Show the Send Parameters screen after positive verification of the password entered.
Cancel	Cancel the Send Parameters function and return to the main screen.

After filling in the password and clicking on OK, the input is checked. The following screen will be shown:



Button Description	
OK	Start sending the current parameters from the CUP program to the CellBox-Lite.
Cancel	Cancel the Send Parameters function and return to the main screen.
Help	Start the Help
Click on OK to start the Send process.	

5.4.3 Password

By selecting the Password function from the Communication menu, you can change the current password for the CellBox-Lite unit (default is 1234).

A screenshot of a 'Change Password' dialog box. The dialog has a title bar with the text 'Change Password' and a close button (X). Inside, there are three text input fields labeled 'Current password', 'New password', and 'Confirm new password'. At the bottom, there are three buttons: 'Send', 'Cancel', and 'Help'.

Field Details

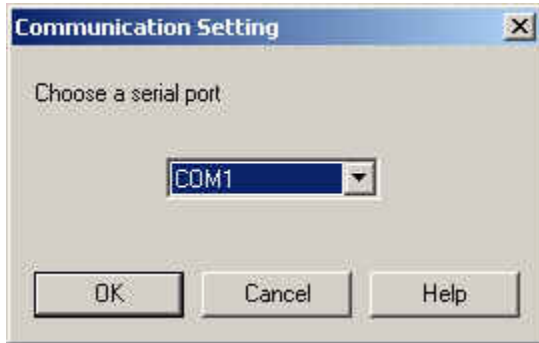
Current password	The password currently in use (will be * (stars))
New password	The new password you want to insert.
Confirm new password	A repeat of the new password for confirmation.

Button Description

Send	Send the changes made in this screen to the CellBox-Lite unit.
Cancel	Cancel the changes made in this screen and return to the main screen.
Help	Starts the Help.

5.4.4 COM Port

The administrator has to define the communication port, through which the PC sends his commands to the CellBox-Lite unit. This has to be done in the Communication Settings screen.

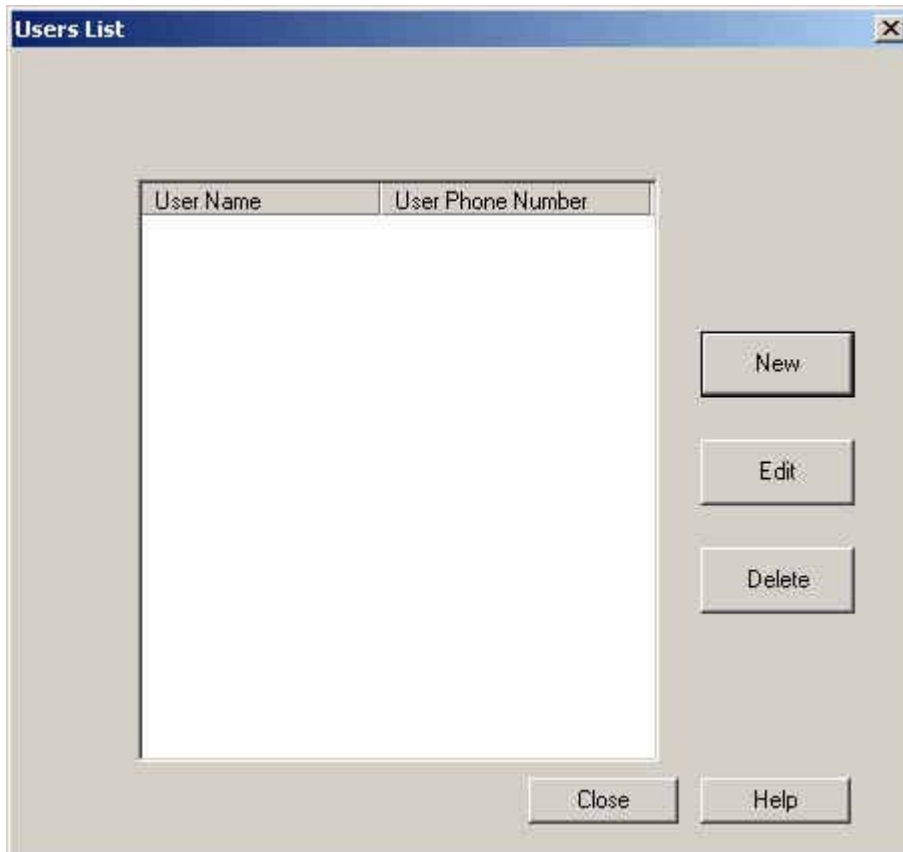


Communication Settings

Function	Description
OK	Accepts the Communication Settings and returns you to the CUP main screen.
Cancel	Returns you to the CUP main window, without accepting changes made.
Port drop down list	Select the used communication port from the list. (Default = COM1)
Help	Starts the Help.

5.5 The Users Menu

In the Users Menu there is the option to define who is allowed to use the CellBox-Lite (incoming call). The administrator can allow only registered users (users defined in the list below). This window is the starting point for all user maintenance (e.g. adding, editing, deleting users).



The Users List window shows the users that have been defined in the CellBox-Lite database.

Button Description

New	Creates a new User.
Edit	Edits an existing user.
Delete	Deletes a user.
Close	Closes the Users List window and returns to the CUP main window.
Help	Starts the Help.

5.5.1 Creating New Users

When clicking on the New button in the Users window, the following screen will appear:

Create User

Details

User Name: DavidZ

SMS Password (Lowercase only): xxxxxxx

User Phone Number: 0569755888

Activities (not for SMS)

☒ Call Through

☐ Call Back

Permissions

Prefix Restrictions: Restriction 7

☒ Max. number of minutes per month: 1000 Min.

OK Cancel Help

In this window, a new user is defined. After entering all information and marking all necessary fields, the user can be added to the database by clicking on the OK button. You will automatically return to the Users List window. Clicking the Cancel button will return you to the Users List window, without updating the database.

The fields, radio buttons and buttons have been described in the following table:

Details	
User Name	Enter the full name of the user.
SMS Password (Lowercase)	Enter the SMS Password for the user. This is the key for any SMS operation. The user can't request an operation from the system without this code (Max. 16 digits and/or characters).
User Phone Number	Enter the mobile phone number of the user. The CellBox-Lite unit will compare this number in case it receives a CLIP from the user and initiate the Call Back function from the PBX. (Use digits only!!!)
Permissions	
Prefix Restriction	Select the prefix restrictions scheme to which a call can't be made (Schemes are defined in the Parameters menu).
Max. number of minutes per month*	Mark the box, should you want to limit the number of minutes per month, the user is allowed to use the CellBox-Lite unit.
Left Time (Displayed only after "Read Parameters")	Field, which shows the remaining time per month when the maximum has been set.
Activities (not for SMS)	
Call Through	CellBox-Lite unit will initiate a dial tone from the PBX after analyzing the CLIP.
Call Back	CellBox-Lite unit will analyze the CLIP, not answer and initiate Call Back from the PBX, if user is allowed to use the system.
OK	Accepts the information for the user and adds him to the database.
Cancel	Returns you to the main window, without adding a new user to the database.

Notes:

*Every first of the month, the minutes per month parameter is automatically reset. The minimum value is 100 minutes and can be increased by steps of 100 to a maximum value of 1000 minutes.

The User Phone Number is unique in the Users List. It can only be used once.

5.5.2 Editing Users

From the Users List window, select the required user and click on the Edit button. The Edit User window will appear. All fields can be changed. After clicking on the OK button, the changes will be accepted and you will return to the Users window.

5.5.3 Deleting Users

From the Users List window select the required user(s) (you can use Shift+click and Ctrl+click) and click on the Delete button.

5.6 The Parameters Menu

The Parameters Menu provides you with the following options:

Function	Description
Control Parameter	Parameter, which is used to get a dial tone after finishing a call, to continue with a new call.
Date&Time	Setting the current Date and Time.
Restrictions (User & Extension Gateway)	Setting up dialing restrictions for users (incoming calls) and Extension Gateway (outgoing calls).
Call Divert	Setting up a call diversion route.
Advanced Settings	Setting the DTMF audio level.
GSM Parameters	Setting up Network ID, CLIR, Roaming and PIN code.
SMS Notification	Setting up using of SMS Notification and “unit busy” message.

5.6.1 Control Parameter

After finishing the conversation via the CellBox-Lite, the control parameter (default = ###) can be used to get a dial tone for a new call. The user does not have to initiate the connection procedure with the CellBox-Lite again.



Control Parameter Buttons

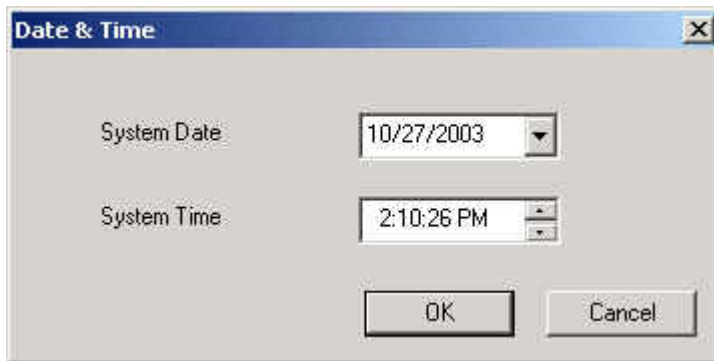
OK	Accepts the PBX Parameters and returns you to the CUP main screen.
Cancel	Returns you to the CUP main screen, without accepting changes made.

Control Parameter

New call key	Code to enable the user to continue to make calls via the PBX, without having to contact the Cellbox-Lite unit between each call (default = ###).
--------------	---

5.6.2 Date & Time

In the Date & Time window the system Date and Time is set.

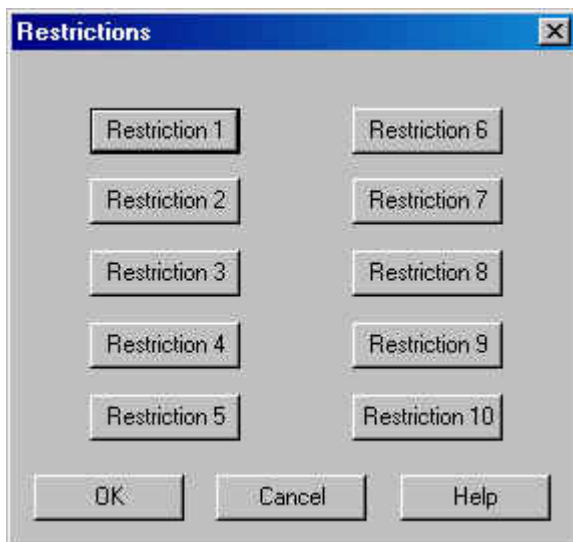


Date & Time

OK	Accepts the System Parameters and returns you to the main screen.
Cancel	Returns you to the main window, without accepting changes made.

5.6.3 Restrictions (Users)

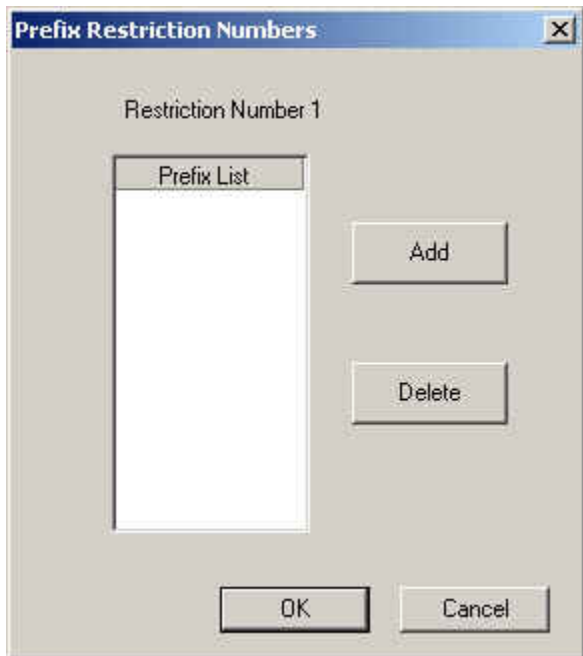
Prefix Restrictions for incoming calls can be set in the Restrictions window. The administrator can setup 10 different Prefix Restriction definitions in the following window.



Button Description

Restriction 1-10	Activates a window, in which a prefix restriction can be setup.
OK	Returns you to the main window, accepting the made changes.
Cancel	Returns you to the main window, without making changes.
Help	Starts the Help.

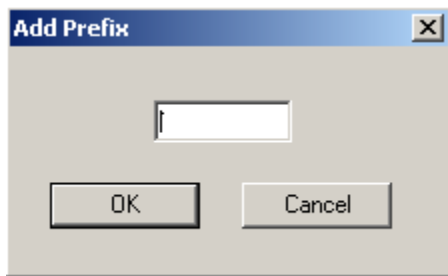
Clicking on a Restriction button provides the following window:



Button Description

Add	Activates a window, in which a prefix can be added.
Delete	Deletes a selected prefix.
OK	Returns you to the Restrictions window, accepting the made changes.
Cancel	Returns you to the Restrictions window, without making changes.

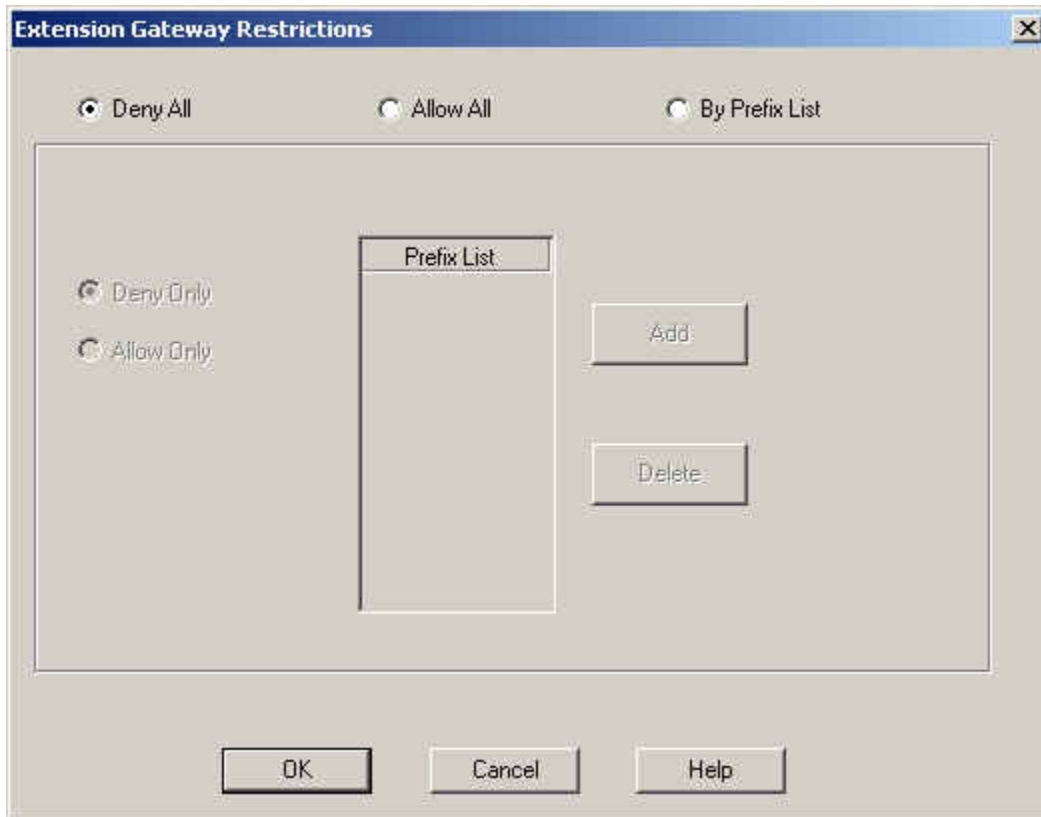
Clicking the Add button will provide you with the following window:



Button Description	
OK	Returns you to the Prefix Restriction Numbers window, accepting the made changes.
Cancel	Returns you to the Prefix Restriction Numbers window, without making changes.

5.6.4 Restrictions for the Extension Gateway

Prefix Restrictions for outgoing calls can be set in the Extension Gateway Restrictions window. The administrator can make 3 initial major decisions: Deny the use of the unit as an extension gateway; Open the unit as an extension gateway for all prefixes; Open the unit as an extension gateway, but use a prefix list. In the last case the prefix list can be a restriction (you cannot use certain prefixes) or a limitation (you can use only certain prefixes). The prefix lists are also called white and black lists.



Function Description

Deny All	Denies the usage of the unit as an extension gateway.
Allow All	Allows the usage of the unit as an extension gateway for all prefixes.
By Prefix List	Allows the usage of the unit as an extension gateway for certain prefixes.
Deny Only	Restricts the usage of certain prefixes (only when By Prefix List is marked).
Allow Only	Allows the usage of certain prefixes only (only when By Prefix List is marked).

Button Description

Add	Activates a window, in which a prefix can be added.
Delete	Deletes a selected prefix.
OK	Returns you to the Restrictions window, accepting the made changes.
Cancel	Returns you to the Restrictions window, without making changes.
Help	Provides Help about this topic.

Clicking the Add button will provide you with the following window:

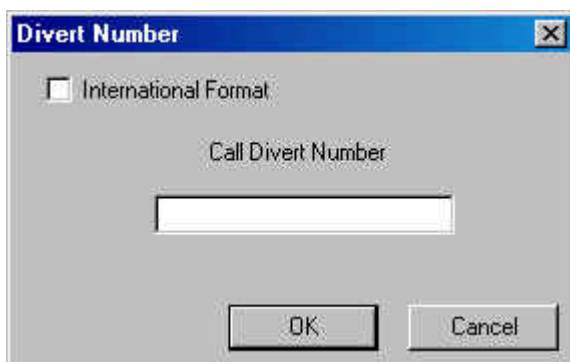


Button Description

OK	Returns you to the Prefix List window, accepting the made changes.
Cancel	Returns you to the Prefix List window, without making changes.

5.7 Call Divert

In the Call Divert screen you can define an alternative call route, should this CellBox-Lite be busy. The following screen is used for this:



Call Divert Buttons

OK	Accepts the Call Divert information and returns you to the CUP main screen.
Cancel	Returns you to the CUP main screen, without accepting changes made.

Call Divert Parameters

International Format	Marking this will allow you to use the plus sign before the number.
Call Divert Number	The number to divert to (+123 4 5678901. when the International Format has been marked)

Notes:

When using the Call Divert, you will manually have to duplicate the database, so that the user will have the same restrictions in both CellBoxes.

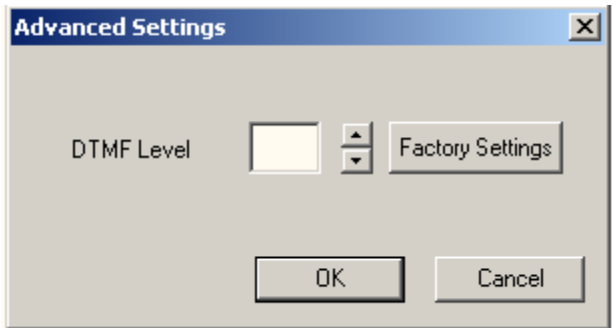
Keep in mind that when using the Call Divert option, the user may have used all his time with the first CellBox, but not with the second!!!

The Call Divert function provides the CellBox-Lite with information on how to reach the alternative number. The information is sent in string format. When marking International Format, the string is different from when it is not marked.

5.8 Advanced Settings

In the Advanced Settings screen, you can define the DTMF audio level.

The change can be done in the following screen:



Advanced Settings Buttons

OK	Accepts the DTMF Level setting and returns you to the CUP main screen after confirming the change.
Cancel	Returns you to the CUP main screen, without accepting changes made.
Help	Starts the Help Function.
Factory Settings	Changes settings back to original.

DTMF Level Parameters

DTMF Level	Changes the audio level of the DTMF. (Default = 4).
------------	---

5.9 GSM Parameters

In the GSM Parameters screen you can define the following optional parameters: the network operator to which the SIM in the unit belongs (Network Lock), to set the CLIR (Caller Line Interface Restriction), to set the Roaming and PIN code.

GSM Parameter Buttons

OK	Accepts the GSM parameter settings and returns you to the CUP main screen.
Cancel	Returns you to the CUP main screen, without accepting changes made.
Help	Starts the Help Function.

Function Description

Network ID	Insert 5 digits, indicating the Network Operator to registrate to. During the registration the SIM card will be locked to that network. (Optional)
CLIR	Calling Line Interface Restriction. Don't show the SIM telephone number in the outgoing call. (Default on – Yes)
Roaming	Allows the system to register with another GSM operator. (Default off – No)
PIN Number	Marking this will allow you to enter a PIN code automatically to the unit during every power-up (max. 8 digits) (Optional)

The screenshot shows a Windows-style dialog box titled "GSM Parameters". It contains the following elements:

- Network ID:** A text input field.
- CLIR:** A dropdown menu currently showing "Yes".
- Roaming:** A dropdown menu currently showing "No".
- PIN Code:** A checkbox that is currently unchecked, followed by an empty text input field.
- Buttons:** Three buttons at the bottom: "OK", "Cancel", and "Help".

5.10 SMS Notification

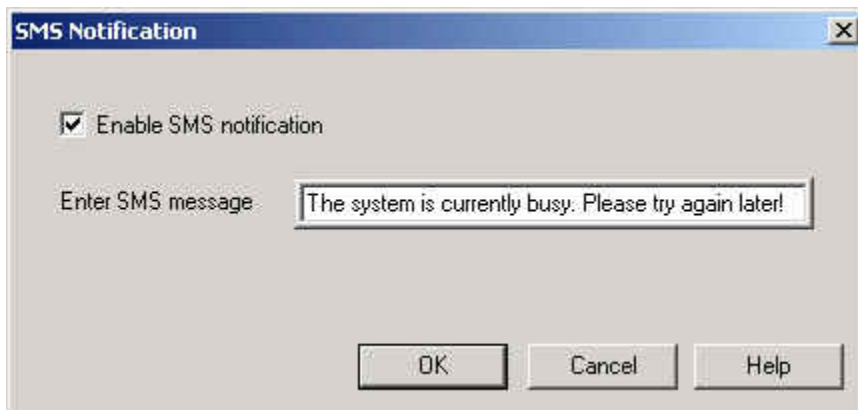
In the SMS Notification screen you can define to activate the SMS notification and what the message will be.

SMS Notification Buttons

OK	Accepts the SMS notification parameter setting and returns you to the CUP main screen.
Cancel	Returns you to the CUP main screen, without accepting changes made.
Help	Starts the Help Function.

Function Description

Enable SMS notification	Activate the SMS notification option.
Enter SMS message	Enter a message that will be sent to a user requesting a call back via an SMS message when the system is busy. (Max. 64 characters.)



5.11 Help

The Help Menu provides you with the following options:

Function	Description
Help Topics	The Help function in the CUP.
About CUP	Version information about the CUP software.
Device Version	Unit Firmware version information.

5.11.1 Help Topics

By clicking on Help and then on Help Topics, you will start the help engine for the CUP program and you will be able to search the database by using the Find tab, Index and Context.

5.11.2 About CUP

By clicking on Help and then on About CUP, you will get the version information of the CellBox-Lite Utility Program.



5.11.3 Firmware Version

By clicking on Help and then on Firmware Version, you will get the unit’s firmware version information.



Firmware Version Buttons

OK	Returns you to the CUP main screen.
Cancel	Returns you to the CUP main screen.

6. CellBox Utility Program Quick Reference Guide

Notes:

First create a simple configuration file by going over Chapter 5.

Save the simple configuration file locally and upload the file to the CellBox-Lite (using Communications/Send Parameters).

Always update the local file after making changes to the CellBox-Lite configuration file.

6.1 Create New User

- Start CUP program
- Click on Communication
- Click on Read Parameters
- Click on Users
- Click on New
- Enter information and make selections in this window
- Click on OK
- Click on Close

When finished making changes to the configurations file:

- Click on Communication
- Click on Send Parameters
- Enter Password
- Click on OK

6.2 Edit User

- Start CUP program
- Click on Communication
- Click on Read Parameters
- Click on Users
- Select user to be edited
- Click on Edit
- Make changes in this window
- Click on OK
- Click on Close

When finished making changes to the configurations file:

- Click on Communication
- Click on Send Parameters
- Enter Password
- Click on OK

6.3 Delete User

- Start CUP program
- Click on Communication
- Click on Read Parameters
- Click on Users
- Select user to be deleted
- Click on Delete
- Click on Close

For selecting multiple users, use Shift+Click or Ctrl+Click.

When finished making changes to the configurations file:

- Click on Communication
- Click on Send Parameters
- Enter Password
- Click on OK

6.4 Restriction Settings (Users)

- Start CUP program
- Click on Communication
- Click on Read Parameters
- Click Parameters
- Click Restrictions
- Click on Users
- Click on required Restriction (1-10)
- Add restricted prefix
- Click on OK
- Repeat for other prefixes
- Click on OK
- Repeat for other Restrictions
- Click on OK
- Click on OK

When finished making changes to the configurations file:

- Click on Communication
- Click on Send Parameters
- Enter Password
- Click on OK

6.5 Restriction Settings (Extension Gateway)

- Start CUP program
- Click on Communication
- Click on Read Parameters
- Click Parameters
- Click Restrictions
- Click on Extension Gateway
- Decide on whether to Allow All or By Prefix List

When choosing Allow All

- Click on OK
- Click on Communication

- Click on Send Parameters
- Enter Password
- Click on OK

When choosing By Prefix List

- Decide on whether to create a Deny Only or Allow Only Prefix list
- Add restricted prefix
- Click on OK
- Repeat for other prefixes
- Click on OK

When finished making changes to the configurations file:

- Click on Communication
- Click on Send Parameters
- Enter Password
- Click on OK

6.6 Date&Time Setting

- Start CUP program
- Click on Communication
- Click on Read Parameters
- Click Parameters
- Click on Date&Time
- Insert Date and Time
- Click on OK

When finished making changes to the configurations file:

- Click on Communication
- Click on Send Parameters
- Enter Password
- Click on OK

6.7 Control Parameter Setting

- Start CUP program
- Click on Communication
- Click on Read Parameters
- Click on Parameters
- Select Control Parameter
- Enter New call key
- Click on OK

When finished making changes to the configurations file:

- Click on Communication
- Click on Send Parameters
- Enter Password
- Click on OK

6.8 Call Divert Setting

- Start CUP program
- Click on Communication
- Click on Read Parameters
- Click on Parameters
- Select Call Divert
- Enter Call Divert Number
- Click on OK

When finished making changes to the configurations file:

- Click on Communication
- Click on Send Parameters
- Enter Password
- Click on OK

6.9 Advanced Settings

- Start CUP program
- Click on Communication
- Click on Read Parameters
- Click on Parameters
- Select Advanced Settings
- Click on Yes
- Enter DTMF level
- Click on OK
- Click on Yes

When finished making changes to the configurations file:

- Click on Communication
- Click on Send Parameters
- Enter Password
- Click on OK

6.10 GSM Parameter Settings

- Start CUP program
- Click on Communication
- Click on Read Parameters
- Click on Parameters
- Click on GSM Parameters
- Fill in the Network ID
- Decide on whether Roaming should be on (Yes) or off (No)
- Decide on whether CLIP should be on (Yes) or off (No)
- Mark and Enter the PIN number if appropriate
- Click on OK

When finished making changes to the configurations file:

- Click on Communication
- Click on Send Parameters
- Enter Password
- Click on OK

6.11 SMS Notification Settings

- Start CUP program
- Click on Communication
- Click on Read Parameters
- Click on Parameters
- Mark SMS notification
- Accept or change the current message
- Click on OK

When finished making changes to the configurations file:

- Click on Communication
- Click on Send Parameters
- Enter Password
- Click on OK

7. CellBox-Lite Access Quick Reference Guide

7.1 Accessing the CellBox-Lite

There are 3 methods to access the CellBox-Lite:

- 1) Dialing from your mobile phone
- 2) Sending an SMS message from your mobile phone
- 3) Dialing the extension number from the office phone

The different methods are described in the following paragraphs.

Note:

Before dialing from your mobile phone, make sure that you have activated your Caller ID (Check your mobile phone manual for more information on this subject.).

7.1.1 From your mobile phone by dialing

- Call the CellBox-Lite number

You will receive the internal dial tone and you can dial the telephone number of the person you want to contact.

7.1.2 From your mobile phone with SMS (1)

- Write a predefined SMS message.
- Send this message to the CellBox-Lite

The CellBox-Lite will call you back within a few seconds and provide you with a dial tone. Should, at that time, the CellBox-Lite be busy, you will receive an SMS message advising you to contact the CellBox-Lite later.

7.1.3 From your mobile phone with SMS (2)

- Write a predefined SMS message.
- Add the required destination telephone number to your SMS code in the message
- Send this message to the CellBox-Lite

The CellBox-Lite will call you back within a few seconds and at the same time calls the destination telephone number specified in the SMS message. Should, at that time, the CellBox-Lite be busy, you will receive an SMS message advising you to contact the CellBox-Lite later.

7.1.4 From the telephone in the Office

- Call the CellBox-Lite extension number within your office

You will be provided with a dial tone.

- Dial the required mobile phone number

The CellBox-Lite will dial the required mobile number.

