



ENGINEERED FOR
XBOX 360

EAR FORCE[®]
XL1

**Gaming Headset +
Amplified Stereo Sound**



User Guide



About the XL1 Headset

The Turtle Beach XL1 is the perfect headset for XBOX 360 gamers looking for immersive game sound and crystal-clear communication at a great value. With premium 50mm speakers, the XL1 delivers superior audio quality while an in-line amplifier provides quick access to independent game and chat volume controls. If you're serious about gaming, then get serious about the sound. Step up to the XL1 and experience game audio like never before.

Features

Amplified Audio

Enhances game sounds for a more immersive experience.

Bass Boost

Built-in bass boost adds depth and realism to game audio.

In-line Amplifier

Quick access to gaming audio controls.

Microphone Monitor

Let's you hear what you're saying while talking.

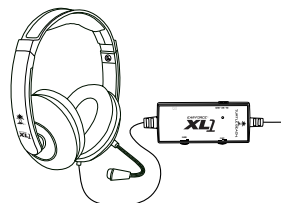
USB Powered

No batteries required.

Table of Contents

XBOX 360 Setup	pg.1
Using the Amplifier	pg.3
Technical Specifications	pg.6
Maintaining Your Headset	pg.7
Important Safety Information	pg.8

What's in the Box



XL1 Headset
with In-line Amplifier



XBOX 360
Talkback Cable



User Guide

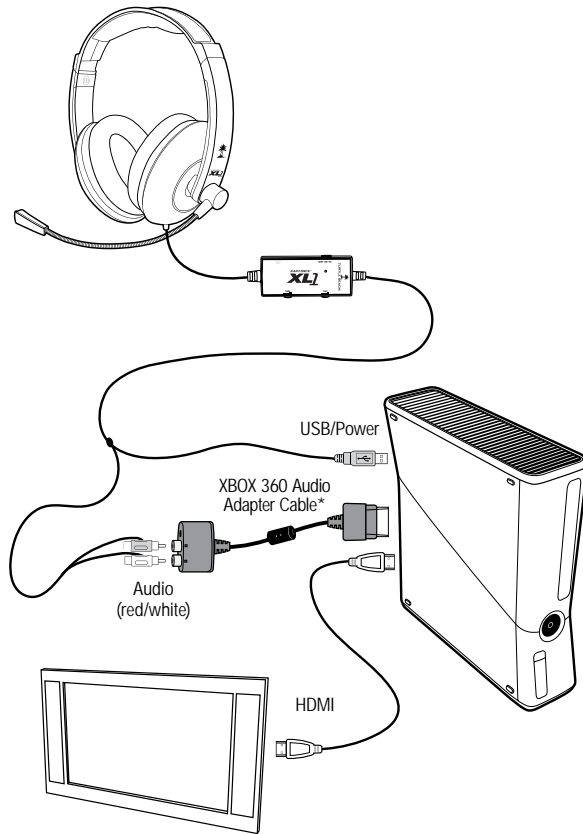


Turtle Beach Sticker

Product support and warranty information:

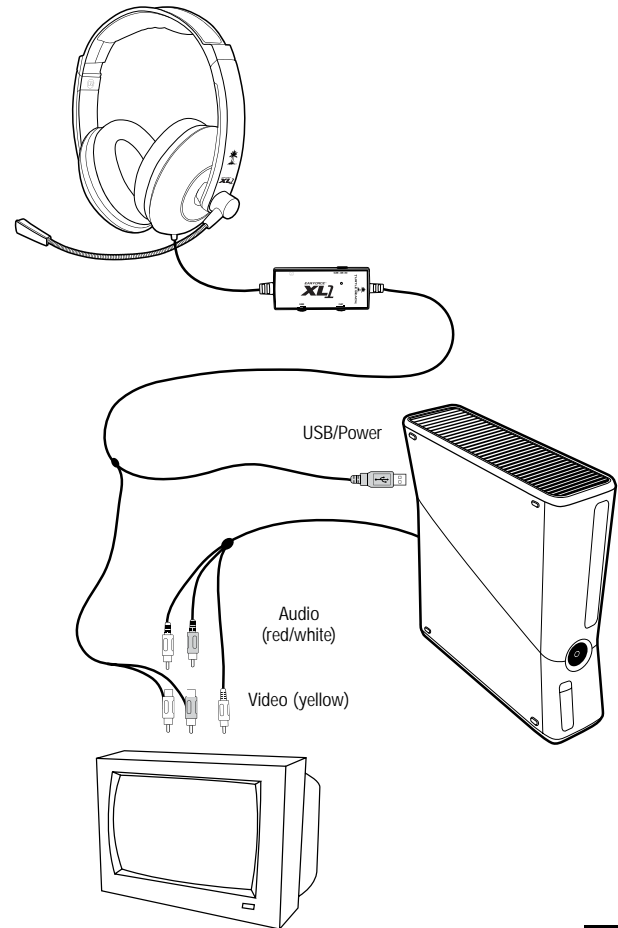
TurtleBeach.com/support

XBOX 360® Setup (HDMI)

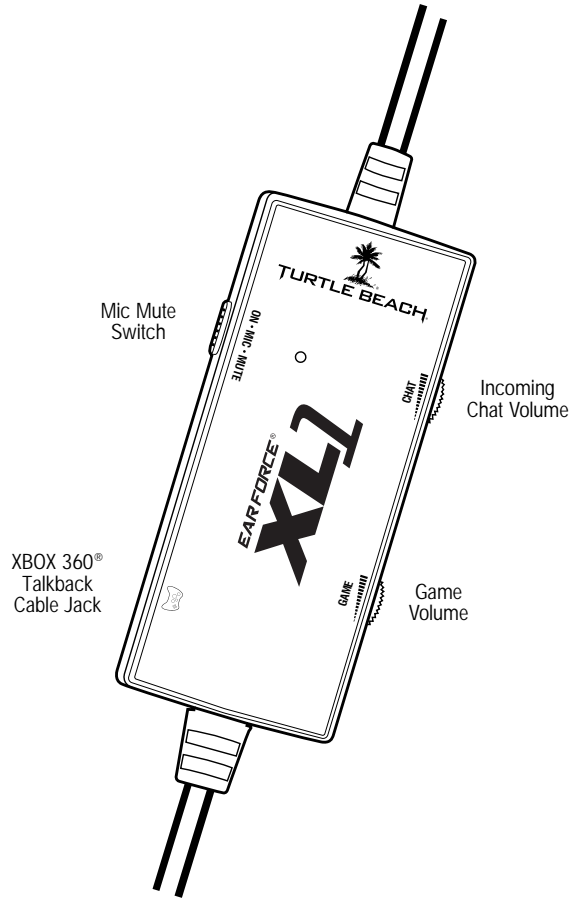


*All XBOX 360 models require an XBOX 360 Audio Adapter Cable for audio output when used with an HDMI connection (available from third party sellers). **NOTE:** If your HDMI TV has red/white AUDIO OUT RCA jack you can use it to feed the sound from your TV to your Turtle Beach headset. (AUDIO IN jacks will not send sound out to your headset, you need AUDIO OUT.)

XBOX 360 Setup (RCA)



Using the Amplifier



Mic Mute Switch

Switch to "MUTE" to mute the microphone.

Chat Volume

Adjusts the volume of incoming chat from other players.

XBOX 360 Talkback Cable Jack:

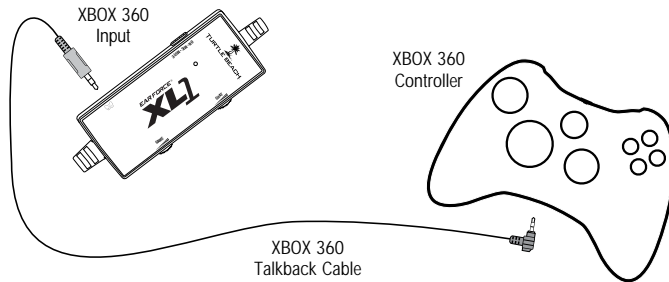
Connect the included XBOX 360 Talkback Cable between this jack and the XBOX 360 controller jack.

Game Volume

Adjusts the game sound volume level.

XBOX 360 Chat Setup

Connect the Talkback Cable



Configure XBOX 360 Settings

Step 1

Press the XBOX 360 Guide Button, select Settings > Preferences > Voice

Step 2

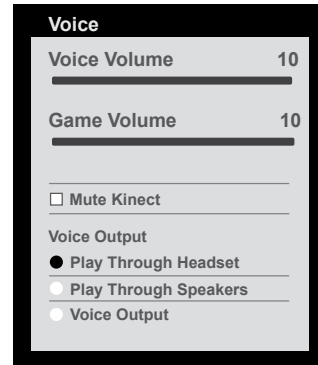
Voice Volume = 10

Step 3

Game Volume = 10

Step 4

Voice Output =
Play Through Headset



Technical Specifications

Headset

- 50mm diameter speakers with neodymium magnets
- Speaker Frequency Response: 20Hz - 20kHz, >120dB SPL @ 1kHz
- Condenser Microphone Frequency Response: 50Hz - 15kHz
- Cable length: 16 ft. (4.87m)

In-line Amplifier

- Amplifier: Stereo DC-coupled, 35mW/ch, THD <1%, Frequency Response: DC - 30kHz
- Mic mute switch
- Maximum analog input level with volume control on maximum setting: 2Vpp (700mV rms)
- Piggyback RCA cables
- 2.5mm XBOX 360® Talkback cable jack
- USB connector for power (5VDC @ <60mA max)

Maintaining Your Headset

Avoid Heat: Avoid resting or storing the headset or cables in or on top of units that generate heat. Gaming consoles are known to generate and dissipate unusually high levels of heat, and the heat can degrade the plastic resulting in twisting and eventual exposure of the internal wiring.

Storage: To help prevent damage to your Turtle Beach Headset, store it in a dry location where there is no risk of heavy items falling on your headset. Do not leave your headset or any accessories in a location where people or pets might accidentally trip over it.

Cleaning: Only use a dry cloth or slightly damp cloth. Cleaning solutions may damage your headset.

Transporting: Always disconnect all cables when transporting your headset.

Wire Management: Use the Velcro attached to your headset cable to avoid tangles when not in use.

Pets: Pets love to chew cords. To prevent this, keep your headset out of the reach of your pets.

XBOX 360 Talkback Cable: Pressure on the Talkback Cable can cause the jacks in the headset or XBOX 360 controller to become loose. A loose jack or wear and tear on the Talkback Cable can result in poor connection, pops, clicks, static, etc. In some cases of excess pressure, the tip of the talkback cable can break off inside the controller. Turtle Beach is not responsible if this happens to your XBOX 360 Controller.

Safety Notice

To avoid potential damage to the device, always disconnect all cables before transporting it.

WARNING: Permanent hearing damage can occur if a headset is used at high volumes for extended periods of time, so it is important to keep the volume at a safe level. Over time, your ears adapt to loud volume levels, so a level that may not cause initial discomfort can still damage your hearing. If you experience ringing in your ears after listening with the headset, it means the volume is set too loud. The louder the volume, the less time it takes to affect your hearing. So, please take care to listen at moderate levels.

- Before placing a headset on your ears, turn the volume down completely, then slowly increase it to a comfortable level.
- Turn down the volume if you can't hear people speaking near you.
- Avoid turning up the volume to block out noisy surroundings.

IC Radiation Exposure Statement for Canada

This equipment complies with IC radiation exposure limits set forth for an uncontrolled environment. End users must follow the specific operating instructions for satisfying RF Exposure compliance. The equipment must not be co-located or operating in conjunction with any other antenna or transmitter. Operation is subject to the following two conditions: (1) this device may not cause interference, and (2) this device must accept any interference, including interference that may cause undesired operation of the device. Caution: The device is incapable of transmitting in the band 5600-5650 MHz band in Canada.

FCC Caution:

Any changes or modifications not expressly approved by the party responsible for compliance could void the user's authority to operate the equipment. This device complies with part 15 of the FCC Rules. Operation is subject to the following two conditions: (1) This device may not cause harmful interference, and (2) this device must accept any interference received, including interference that may cause undesired operation.

This product is CE marked according to the provisions of the R&TTE Directive (99/5/EC)

Grantee Code/Reg Number: XGB/GC229855

FCC Code: XGB-TB2135

Voyetra Turtle Beach, Inc.



Copyright © 2011 Voyetra Turtle Beach, Inc. (VTB, Inc.) All Rights Reserved. No part of this document may be reproduced without prior written consent from Voyetra Turtle Beach, Inc. Turtle Beach, the Turtle Beach logo, Voyetra and Ear Force are registered trademarks of VTB, Inc. XBOX, XBOX LIVE, and XBOX 360, are registered trademarks of Microsoft Corporation. All other trademarks are properties of their respective owners and are hereby acknowledged. Made in China.



For more products, accessories
and general product information, please visit
TurtleBeach.com

For warranty information and product support, please visit
TurtleBeach.com/support

P/N: TB521-2149-01