

IP Speaker

IS-640

User manual



PORTech
Your CTI Partner

【Content】

1.Introduction	1
2.Parts list:	1
3.Panel description	2
4.Web Page Setting	3
5 Network	5
5.1 Network Status.....	5
5.2 WAN Setting.....	5
6. SIP Setting	6
6.1 Service Domain	6
6.2 Port Setting	7
6.3 Codec Setting	7
6.4 Audio Setting.....	8
6.5 Other Setting.....	9
7.STUN Setting	9
8.Update	10
8.1 New Firmware.....	10
8.2 Default Setting	12
9.System Authority	13
10.Save Change	13
11.Reboot	14

1.Introduction

IS-640 IP Speaker provide a user-friendly control and simple voice broadcasting. The product is designed to provide easy use for any office, department store, factory, school to be able to quickly broadcast announcements to their any assigned office or branch or classes (or a group of office or branch or classes) .

2.Parts list:

2.1. IP Speaker(IS-640) main body



2.2. Network cable 2M

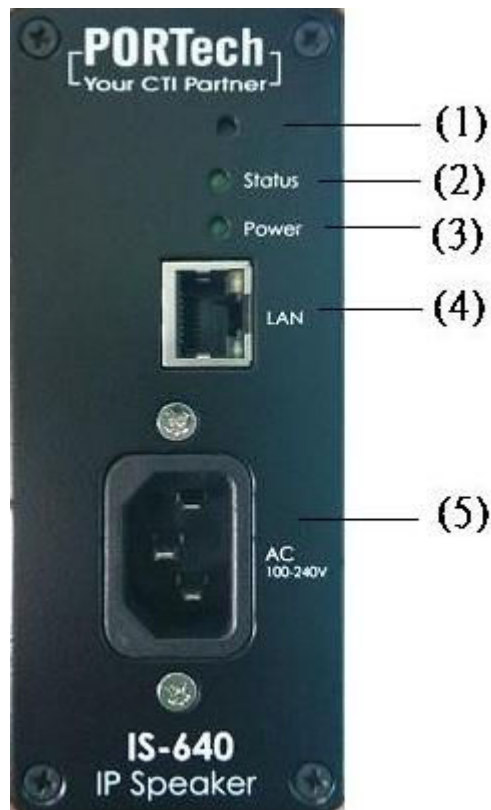


2.3. AC power cord 1.8M



2.4. User manual

3. Panel description



3.1 IP Reset Button : please press the button in 7-8 seconds till the status led flash blink to restore the factory default IP 192.168.0.100

3.2 Status :

1. light turn off : standby
2. light turn on : call in status
3. light twinkle : user is speaking

3.3 Power :

1. light turn off : no power
2. light turn on : standby

3.4 LAN : Standard RJ-45 socket, connecting to Hub circuit

3.5 AC 100~240V : power socket


4. Web Page Setting

Step 1: Browse the IP address <http://192.168.0.100> from Internet Explorer

Step 2: Please enter the username and password for authentication. (default username: voip · Password: 1234). The page follows when the username and password are correct



Step 3: When you login the web page, you can see current System Information like Model Name, Firmware Version, Codec, Versionetc in this page.



Network

SIP Settings

STUN Setting

Update

System Authority

Save Change


Reboot

IS-640 v1.130

Module Description:	IP Speaker for LAN Vocal PA System,
Firmware Version:	Fri Apr 10 11:27:41 2015.
Codec Version:	Thu Jul 29 11:15:45 2010.
Contact Address:	150, Shiang-Shung N.Road., Taichung, Taiwan, R.O.C.
Tel:	886-4-23058000
Fax:	886-4-23022596
E-Mail:	sales@portech.com.tw
Web Site:	http://www.portech.com.tw

© 2014 [PORTech Communications Inc.](#)

You also can see the function lists in the left side
 Include Network ,SIP Setting,STUN Settings, Update, System Authority, Save Change , Reboot .



Network

SIP Settings

STUN Setting

Update

System Authority

Save Change

Reboot

IS-640 v1.130

Module Description:	IP Speaker for LAN Vocal PA System,
Firmware Version:	Fri Apr 10 11:27:41 2015.
Codec Version:	Thu Jul 29 11:15:45 2010.
Contact Address:	150, Shiang-Shung N.Road., Taichung, Taiwan, R.O.C.
Tel:	886-4-23058000
Fax:	886-4-23022596
E-Mail:	sales@portech.com.tw
Web Site:	http://www.portech.com.tw

© 2014 [PORTech Communications Inc.](#)

- 4.1. Network : provide Status, WAN Setting
- 4.2. SIP Settings : Provide Service Domain
 Port Setting (SIP and RTP port setting), Code Setting, Audio Setting, Other Setting
- 4.3. STUN Setting : provide STUN Setting to penetrate the Firewall .
- 4.4. Update : provide New Firmware (firmware upgrade), Default Settings (restore default setting).
- 4.5. System Authority : provide user to change login name and password.
- 4.6. Save Change : Save the changes you have done
- 4.7. Reboot : Restart the system. .

5 Network

5.1 Network Status

Network Status: you can check the current Network Setting in this page

Net Status

Master	WAN Interface	LAN Interface
Type	Fixed IP Client	-
IP	192.168.0.100	-
Mask	255.255.255.0	-
Gateway	192.168.0.254	-
MAC	00037E014E67	-

5.2 WAN Setting

PORTech
Your CTI Partner

Network
Status
WAN Setting
SIP Settings
STUN Setting
Update
System Authority
Save Change
Reboot

WAN Setting

WAN Setting	
IP Type	<input checked="" type="radio"/> Fixed IP <input type="radio"/> DHCP Client <input type="radio"/> PPPoE
Master IP	<input type="text" value="192.168.0.100"/>
Mask	<input type="text" value="255.255.255.0"/>
Gateway	<input type="text" value="192.168.0.254"/>
DNS Server1	<input type="text" value="168.95.192.1"/>
DNS Server2	<input type="text" value="168.95.1.1"/>
MAC	<input type="text" value="00037e014e67"/>

PPPoE Setting

User Name	<input type="text"/>
Password	<input type="text"/>

- (1) The TCP/IP Configuration item is to setup the WAN port's network environment. You may refer to your current network environment to configure the system properly.
- (2) The PPPoE Configuration item is to setup the PPPoE Username and Password. If you have the PPPoE account from your Service Provider, please input the Username and the Password correctly.
- (3) When you finished the setting, please click the Submit button.

6. SIP Setting

6.1 Service Domain

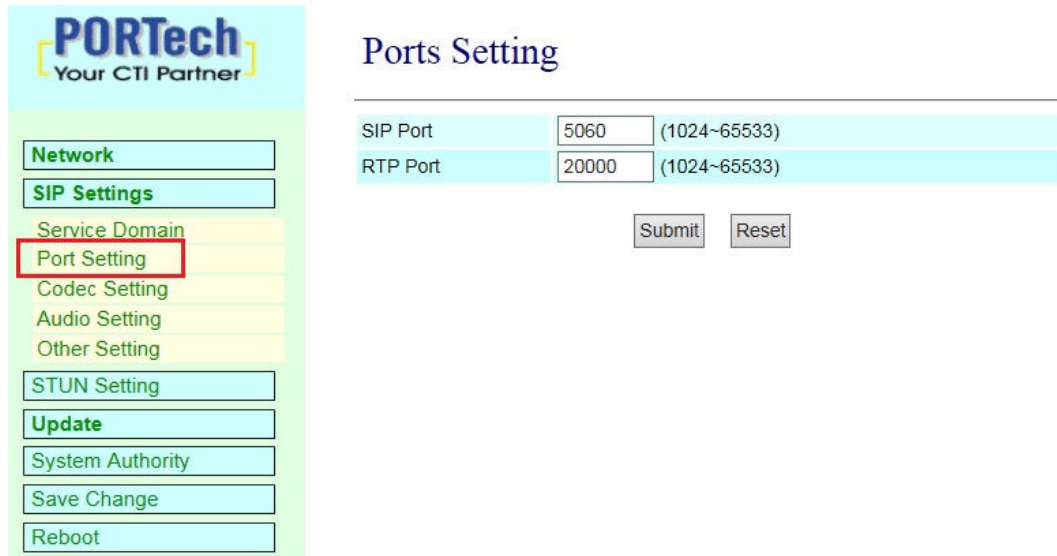
In Service Domain Function you need to input the account and the related informations in this page, please refer to your ISP Provider. You can register three SIP accounts.

field	explain
Realm 1 (Default)	
Active	Default:Off , on: active this account
Display Name	you can input the name you want to display
User Name	you need to input the User Name get from your ISP.
Register Name	you need to input the Register Name get from your ISP.
Register Password	you need to input the Register Password get from ISP.
Domain Server	you need to input the Domain Server get from your ISP.
Proxy Server	you need to input the Proxy Server get from your ISP
Outbound Proxy	you need to input the Outbound Proxy get from your ISP. If your ISP does not provide the information,then you can skip this item.
Status	You can see the Register Status. Not Register(register fail) , Register(register successful) °

When you finished the setting,please click the Submit button. Remember to click "Save Charge"

6.2 Port Setting

You can setup the SIP and RTP port number in this page. Each ISP provider will have different SIP/RTP port setting, please refer to the ISP to setup the port number correctly. When you finished the setting, please click the Submit button and “Save Charge”



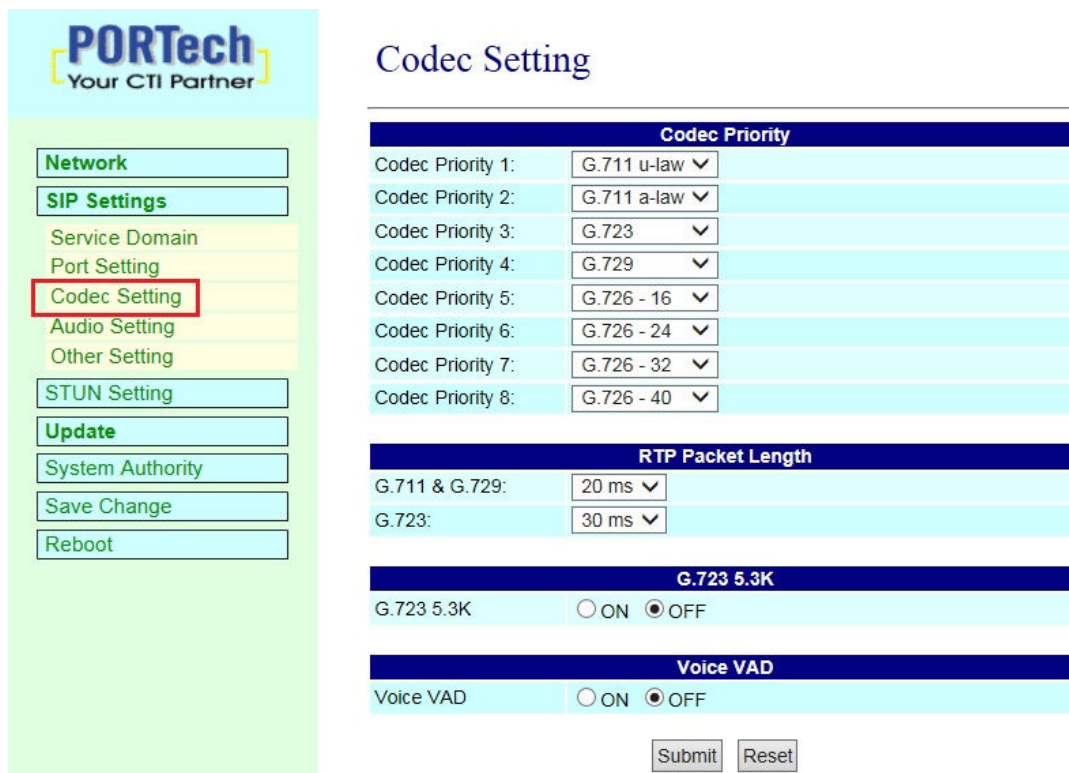
The screenshot shows the PORTech web interface. On the left is a navigation menu with the following items: Network, SIP Settings (highlighted), Service Domain, Port Setting (highlighted with a red box), Codec Setting, Audio Setting, Other Setting, STUN Setting, Update, System Authority, Save Change, and Reboot. The main content area is titled "Ports Setting" and contains the following fields:

SIP Port	<input type="text" value="5060"/>	(1024~65533)
RTP Port	<input type="text" value="20000"/>	(1024~65533)

Below the fields are two buttons: "Submit" and "Reset".

6.3 Codec Setting

You can setup the Codec priority, RTP packet length in this page. You need to follow the ISP suggestion to setup these items. When you finished the setting, please click the Submit button and “Save Charge”.



The screenshot shows the PORTech web interface. On the left is a navigation menu with the following items: Network, SIP Settings, Service Domain, Port Setting, Codec Setting (highlighted with a red box), Audio Setting, Other Setting, STUN Setting, Update, System Authority, Save Change, and Reboot. The main content area is titled "Codec Setting" and contains the following sections:

Codec Priority	
Codec Priority 1:	<input type="text" value="G.711 u-law"/>
Codec Priority 2:	<input type="text" value="G.711 a-law"/>
Codec Priority 3:	<input type="text" value="G.723"/>
Codec Priority 4:	<input type="text" value="G.729"/>
Codec Priority 5:	<input type="text" value="G.726 - 16"/>
Codec Priority 6:	<input type="text" value="G.726 - 24"/>
Codec Priority 7:	<input type="text" value="G.726 - 32"/>
Codec Priority 8:	<input type="text" value="G.726 - 40"/>

RTP Packet Length	
G.711 & G.729:	<input type="text" value="20 ms"/>
G.723:	<input type="text" value="30 ms"/>

G.723 5.3K

G.723 5.3K ON OFF

Voice VAD

Voice VAD ON OFF

Below the sections are two buttons: "Submit" and "Reset".

6.4 Audio Setting

Set speaker volume and voice detect function

PORTech
Your CTI Partner

Audio Setting

Speaker Volume: (64~0)

Detection Sensitivity: (32~0)

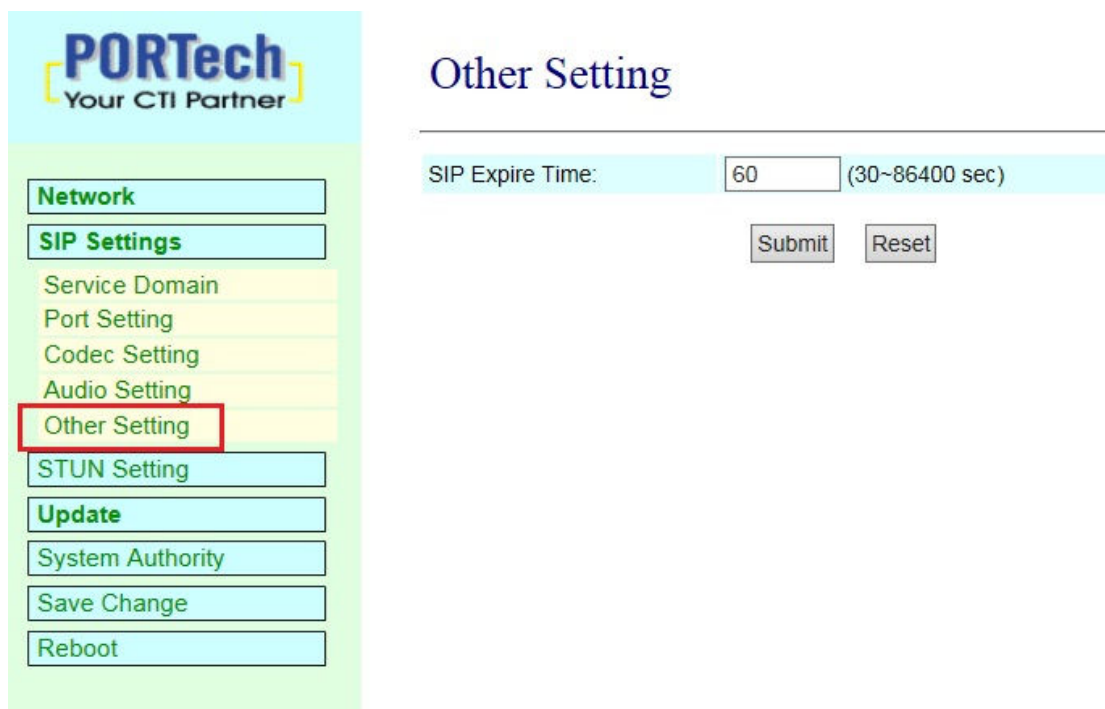
Send Detected: ON OFF

Send Destination:

Field	description
Speaker Volume	Default :50,maximum: 64 , minimum: 0.
Detection Sensitivity	Default:32,maximum: 32 , minimum: 0
Send Detected	Default:OFF;ON:send Voice detection packet,OFF:don't send Voice detection packet.
Send Destination	Send IP Address for sending Voice detection packet.

When you finished the setting, please click the Submit button and “Save Charge”.

6.5 Other Setting



PORTech
Your CTI Partner

Network

SIP Settings

Service Domain

Port Setting

Codec Setting

Audio Setting

Other Setting

STUN Setting

Update

System Authority

Save Change

Reboot

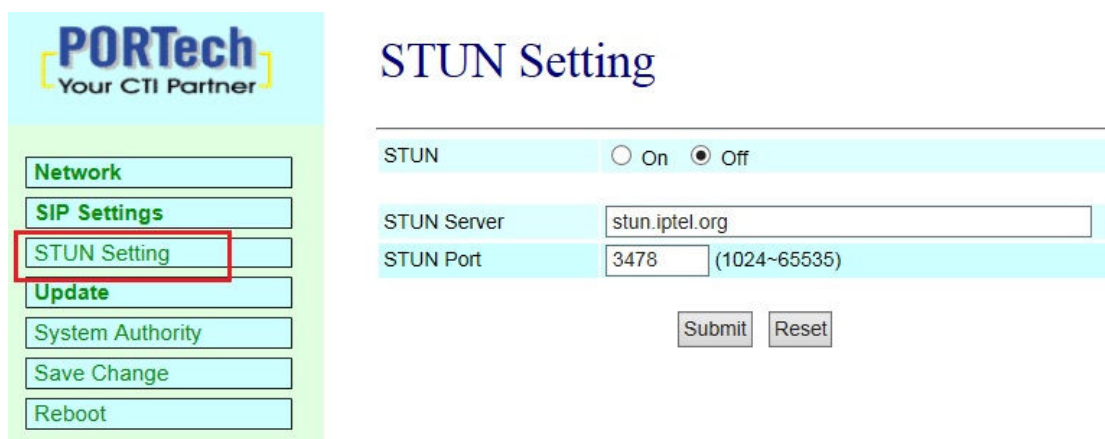
Other Setting

SIP Expire Time: (30~86400 sec)

SIP Expire Time: Default:60; set register's time interval ;range:30~86400 sec
When you finished the setting, please click the Submit button and "Save Charge".

7.STUN Setting

you can setup the STUN Enable/Disable and STUN Server IP address in this page. This function can help your VoIP device working properly behind NAT. To change these settings please following your ISP information. When you finished the setting, please click the Submit button.



PORTech
Your CTI Partner

Network

SIP Settings

STUN Setting

Update

System Authority

Save Change

Reboot

STUN Setting

STUN On Off

STUN Server

STUN Port (1024~65535)

8.Update

In Update you can update the system’s firmware to the new one or execute the factory reset to let the system back to default setting.

8.1 New Firmware

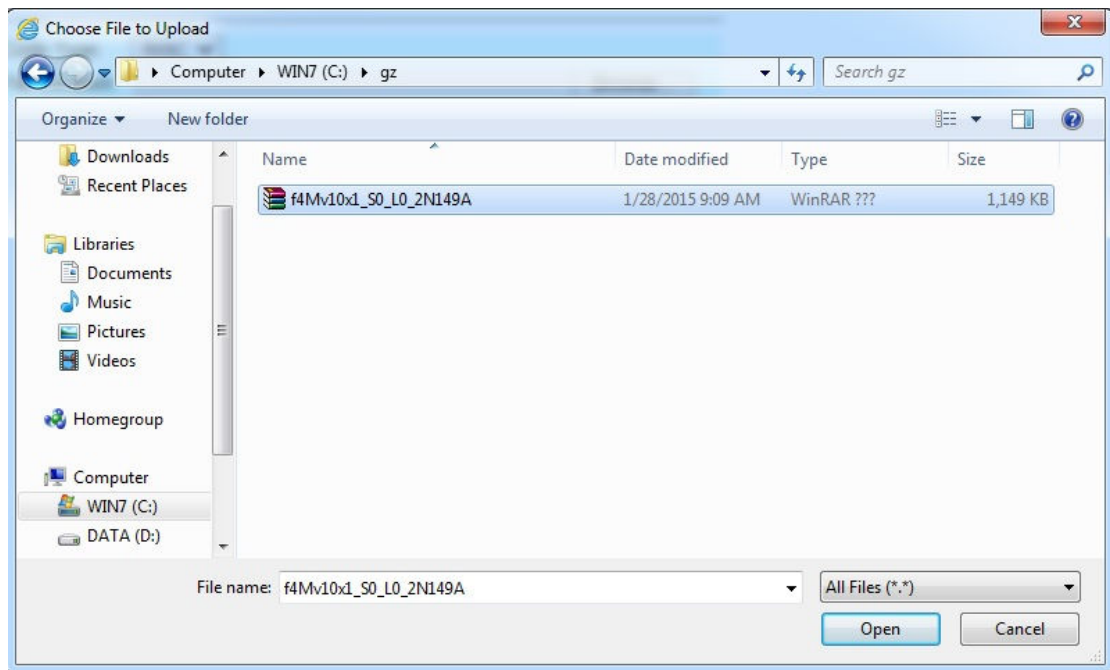
Field	Description
Code Type	Default:Risc (.gz). Provide Risc (system firmware.gz) and DSP (DSP firmware.ds).
File Location	Click the “Browse” button in the right side of the File Location or you can type the correct path and the filename in File Location blank.

Setep 1: choose Updte→New Firmware , choose Code Type: Risc and click the “Browse” button in the right side of the File Location or you can type the correct path and the filename in File Location blank.

Update Firmware

Ver = v1.130, GZ = r4IPA,x1, PCB = IS640.

Setep 2:choose [gz] file ,then click [open].



Setep 3:[File Location] will show the file location and file name. after confirm ,please click submit

Update Firmware

Ver = v1.130, GZ = r4IPA,x1, PCB = IS640.

Code Type:	<input type="text" value="RISC"/>
File Location:	<input type="text" value="C:\gz\f4Mv10x1_S0_L0_2N149A.gz"/> <input type="button" value="Browse..."/>
<input type="button" value="Submit"/> <input type="button" value="Reset"/>	

Setep 4: please don't turn power off when system updating. It is important. The updating time is about 3 minutes.

Note Information

Waiting Message

waiting for system updating & rebooting...

Setep 5: After finished update firmware,please click Refresh (F5),then you can set other settings

8.2 Default Setting

In this page: Update/ Default Settings, you could restore the factory default settings to the system. **All setting will restore default setting.**

IP will retain original IP as usual not default IP.



Step1: choose Update→Default Setting. When you want to restore default setting, please click [Restore]. You can clear all settings and auto refresh as follows.

Restore Default Settings

Restore default settings:

Setep 2: please wait for a moment while rebooting as follws.

Note Information

Booting

Please wait for a moment while rebooting ...

Setep 3: After reboot, webpage will be back to main page. Please click refresh(F5) ,then you can set other settings

9. System Authority



PORTech
Your CTI Partner

System Authority

New username:

New password:

Confirmed password:

Network

SIP Settings

STUN Setting

Update

System Authority

Save Change

Reboot

In System Authority you can change your login name and password.

When you finished the setting, please click the Submit button and “Save Charge”.

10. Save Change

In Save Change you can save the changes you have done. If you want to use new setting in the VoIP system, you have to click the Save button. After you click the Save button, the system will automatically restart and the new setting will effect.



PORTech
Your CTI Partner

Save Changes

Save Changes:

Network

SIP Settings

STUN Setting

Update

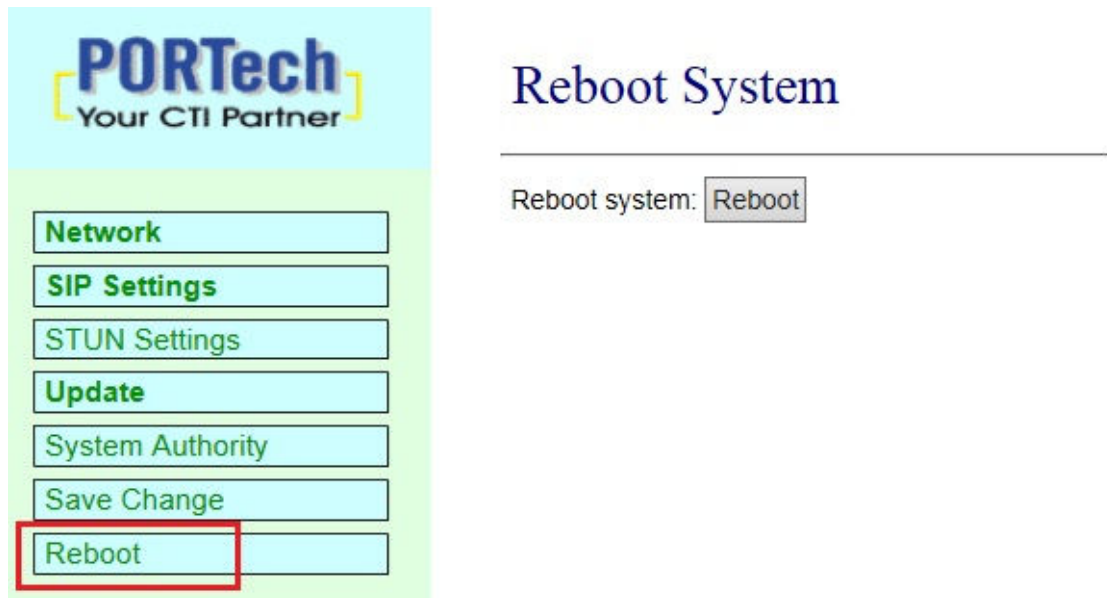
System Authority

Save Change

Reboot

11.Reboot

Reboot function you can restart the system. If you want to restart the system, you can just click the Reboot button, then the system will automatically.



Please don't turn power off while rebooting,thanks

Note Information

Booting

Please wait for a moment while rebooting ...

After reboot, webpage will be back to main page. Please click refresh(F5) ,then you can set other settings