

Dazzle* Card Reader

**USER'S
MANUAL**



Dazzle*TM

USER'S MANUAL

CONTENTS

Getting Started — 

Connecting to a Macintosh — 

Connecting to a PC Compatible — 

How to Use Your Dazzle Card Reader — 

Dazzle OnDVD for
PC Compatible Computers — 

Troubleshooting Your Dazzle Card Reader — 

Obtaining Technical Support — 

How to Contact Us — 

USER'S MANUAL

1 GETTING STARTED

Introduction 

What's Included with
Your Dazzle Reader 

System Requirements 

Parts of Your Dazzle
Card Reader 

Registering Your Dazzle Card Reader 

Dazzle*

USER'S MANUAL

Introduction

Thank you for purchasing this Dazzle card reader.

This product is a USB card reader/writer available in four different models (CompactFlash™, SmartMedia™, MultiMediaCard™/Secure Digital™, and Memory Stick™) for new Apple iMac, iBook, G3/G4, and PC compatible owners. It is easy to use and provides transfer rates of up to 900KB/s. With this card reader, audio and video files, cell phone databases, and more can now be shared easily between your digital device (camera, cell phone, MP3 player, etc) and your computer. Simply remove the digital media from your digital device and insert it into the 6 In 1 (connected to your PC or Mac) to transfer or view your digital data.

What's Included with your Dazzle Card Reader

Your Dazzle card reader includes the following package contents:

- Dazzle Card Reader
- Dazzle Installation CD (includes this User's Manual, drivers and free OnDVD bonus software for use with PC compatible computers)
- Quick-Start Instructions (located on inside of insert card)
- Registration Card
- Warranty Certificate

System Requirements

PC Compatible:

- Desktop or laptop PC Compatible with an available USB port
- Windows 98, 98SE, 2000, Me, or XP
- CD-ROM Drive (for driver software installation when necessary)

Macintosh:

CompactFlash, SmartMedia, and MultiMediaCard/Secure Digital readers

- Macintosh computer with an available USB port
- Mac OS 8.6 or higher
- CD-ROM Drive (for driver software installation if necessary)

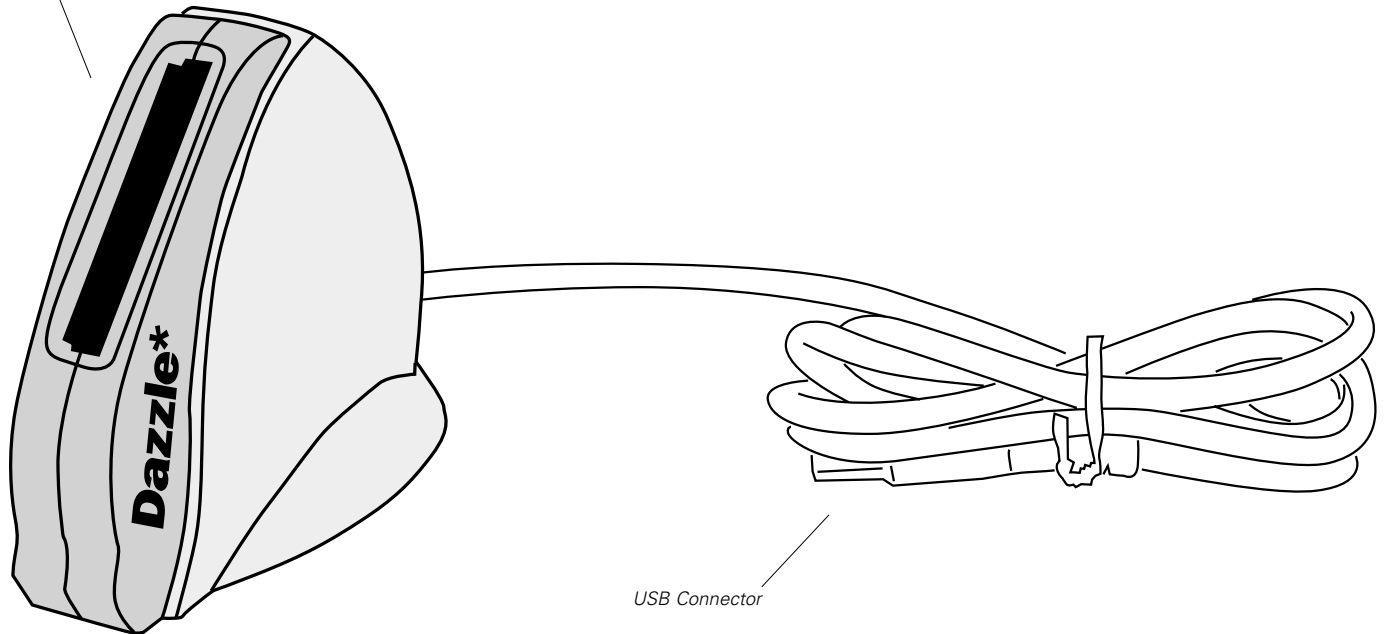
Memory Stick card reader

- Macintosh computer with an available USB port
- Mac OS 9.0 or higher

USER'S MANUAL

Parts of Your Card Reader

Card slot



USB Connector

NOTE: Card slot size will differ with each model.

USER'S MANUAL

Registering Your Dazzle Card Reader

Thank you again for purchasing this Dazzle card reader. In order for us to better serve you, we encourage you to register your card reader as soon as possible. There are several benefits to registering:

- 1.** Registering your Dazzle Card Reader entitles you to free periodic driver software updates when available.
- 2.** Registering your Dazzle Card Reader also entitles you to Technical Support from Dazzle.

There are three options for you to register your reader:

- 1.** Register online at <http://www.Dazzle.com/support/prodreg.html> for instant registration.
(or)
- 2.** Complete and mail the included Registration Card.
(or)
- 3.** Complete and fax the included Registration Card to Customer Service at 800-483-5106

CONNECTING

to a Macintosh



Installation Overview — 

Installing the Driver Software — 

Connecting to a USB Port — 

Connecting to a USB Hub — 

USER'S MANUAL

Installation Overview

This card reader is relatively easy to install and operate. To avoid complications during the installation process, please follow the steps in order as described in this section.

Installing the Driver Software

IMPORTANT NOTE: For the CompactFlash, MultiMediaCard/Secure Digital, and Memory Stick card readers, driver installation is not required for Mac OS 9.x and greater. For the SmartMedia card reader, driver installation is required.

- 1.** Start up your Macintosh computer and close all applications.
- 2.** Insert the Dazzle Installation CD-ROM.
- 3.** Double-click on the "**Dazzle Driver Installer**" icon.
- 4.** A splash screen will appear. Click "**Continue**."



- 5.** Another screen will appear containing the "Software License Agreement". After viewing the "Software License Agreement" click "**Agree**" to proceed.

USER'S MANUAL

6. Select your reader model from the list provided on the screen to install the appropriate drivers, and then click "**Install**."

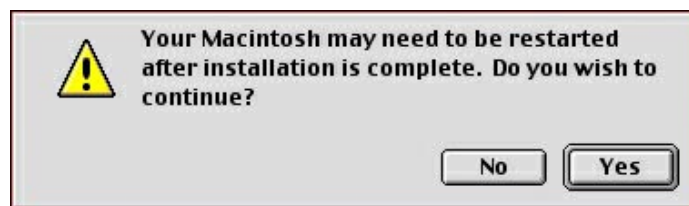


7. Another splash screen will appear. Click "**Continue**"



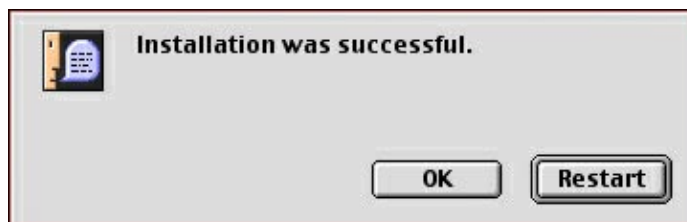
8. A dialog box may appear advising that you may have to restart your computer after installing the software, click "**Yes**" to continue. Your Macintosh will then begin performing the installation and a status bar will appear displaying the progress of the installation.

NOTE: the actual driver installation should only take a few seconds.



USER'S MANUAL

9. A final dialog box will appear, (similar to the message below) advising that the software was successfully installed. Click "**Restart**."



Congratulations! Driver installation is now complete. You may now connect the reader to your computer after restarting. Proceed to the next page for instructions on connecting your Dazzle card Reader.

INSTALLATION NOTE: *If you attempt to attach the reader's cable to the USB port of your Macintosh or hub prior to installing the drivers, you may receive a message similar to the one shown below:*



*If this occurs, click "**Cancel**", install the driver software from the Dazzle installation CD-ROM, and then connect the reader. For more information on attaching USB devices proceed to the section "Connecting to the USB Port" (page 11) or "Connecting to a USB Hub" (page 12).*

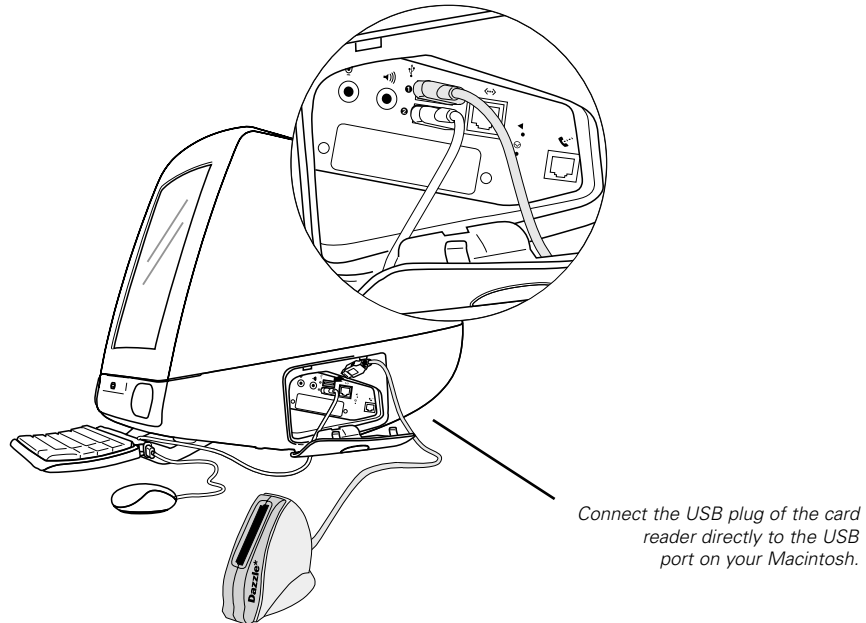
USER'S MANUAL

Connecting to a USB Port

- 1. Connect the USB connector of the Dazzle Card Reader to the USB port of your Macintosh computer.** Use only the primary ports located on the back (G3, G4) or side (iMac, iBook) - do not use the USB ports on the keyboard.
- 2. Make sure the cable end is firmly connected.** Be careful not to confuse the upper and lower parts of the connector. Do not force connections, as this may damage the computer or the card reader.

NOTE: The card reader may be connected to the computer while the computer is running.

In the illustration below, the card reader connects directly to the USB port on your Macintosh. Your Dazzle Card Reader can also be connected to a USB hub - see next page for more information.



USER'S MANUAL

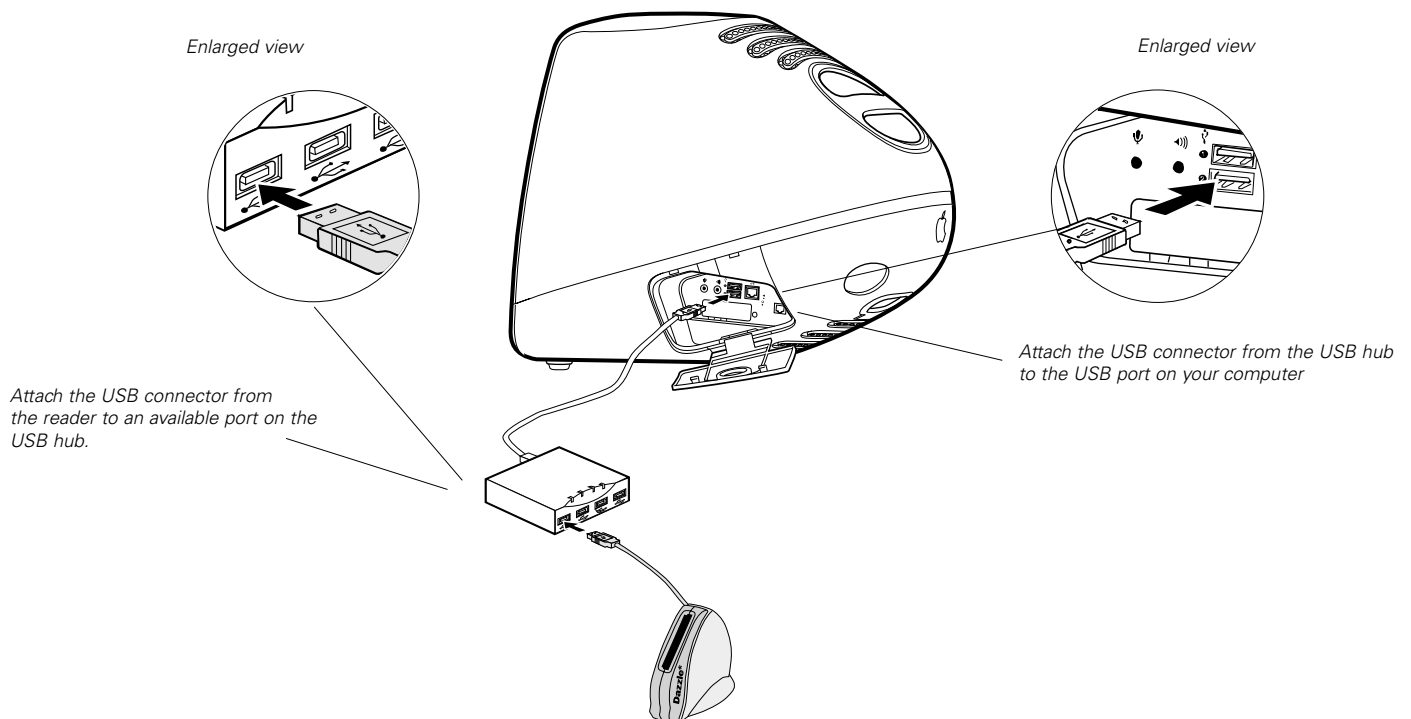
Connecting to a USB Hub

- 1. Connect the USB hub (purchased separately) to the USB port on your Macintosh.**
NOTE: Use only with a powered USB hub.

- 2. Then connect the USB connector of the Dazzle Card Reader to a port on the USB hub.**

NOTE: The card reader may be plugged into the computer or hub while the computer is running.

- 3. Make sure the cable ends are firmly connected.** *Be careful not to confuse the upper and lower parts of the connector. Do not force connections, as this may damage the computer or the Dazzle Card Reader.*



CONNECTING to a PC Compatible

Installing the Driver Software
and OnDVD Software
on Windows 98, Me, and 2000

Installing the Driver Software on
Windows XP

Installing OnDVD on Windows XP

Connecting to a USB Port

Connecting to a USB Hub

USER'S MANUAL

Installing the Driver Software and OnDVD Software on Windows 98, Me, and 2000:

This card reader is relatively easy to install and operate. To avoid complications during the installation process, please follow the steps in order as described in this chapter. Before connecting and using the card reader, you must first install the device drivers located on the accompanying Dazzle Installation CD.

NOTE: The screenshots below may vary slightly from those on your computer screen.

IMPORTANT NOTE: For the CompactFlash, MultiMediaCard/Secure Digital, and Memory Stick readers, driver installation is only required for Windows 98 and 98SE. Driver installation is not required for Windows 2000 and Windows Me. Simply connect the card reader and access the reader by using the "RemovableDisk" icon in "My Computer". For the SmartMedia card reader, driver installation is required.



Click *Install Drivers*.



1. Start your computer running Windows. Close all open applications and insert the Dazzle Installation CD. The auto-run program will then launch the setup application automatically.

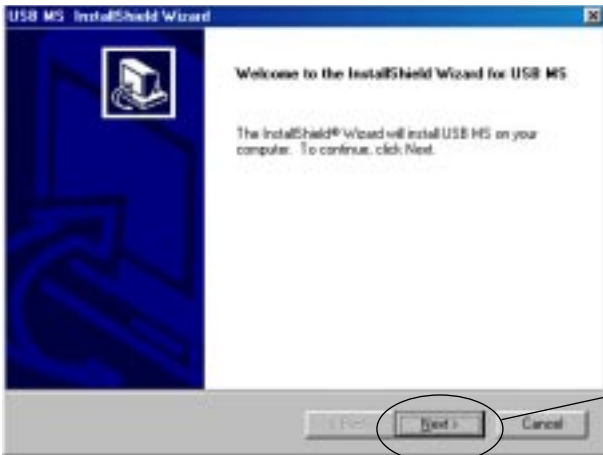
If the installer does not begin momentarily, double-click on "**My Computer**." Next double-click on the drive corresponding to your CD-ROM, then double-click on the "**Setup.exe**" file to begin.

2. A menu will appear with several options (as shown on top left). Select "**Install Drivers**" from the first menu.

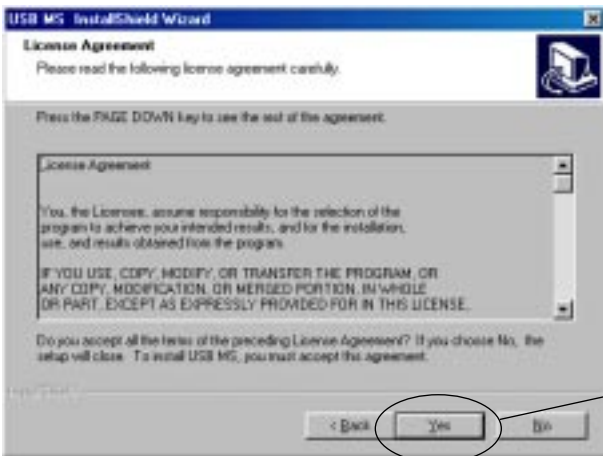
NOTE: From this menu you can also install Dazzle OnDVD and Acrobat Reader.

3. On the next screen (as shown on bottom left), select your reader model from the four models displayed. (CompactFlash, MultiMediaCard/Secure Digital, SmartMedia, and Memory Stick).

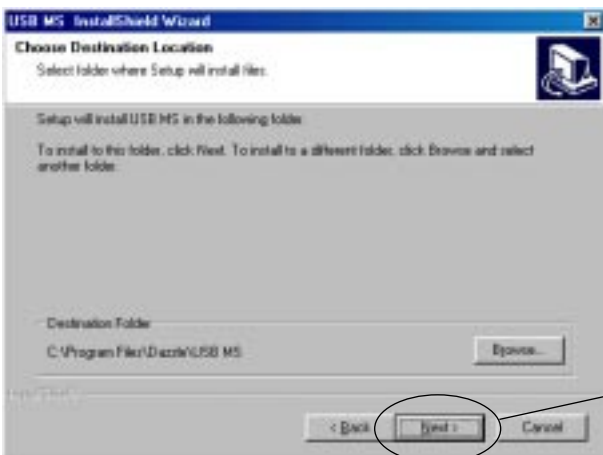
USER'S MANUAL



4. After a moment the setup program displays a dialog box similar to the one as shown on left. Click "**Next.**"

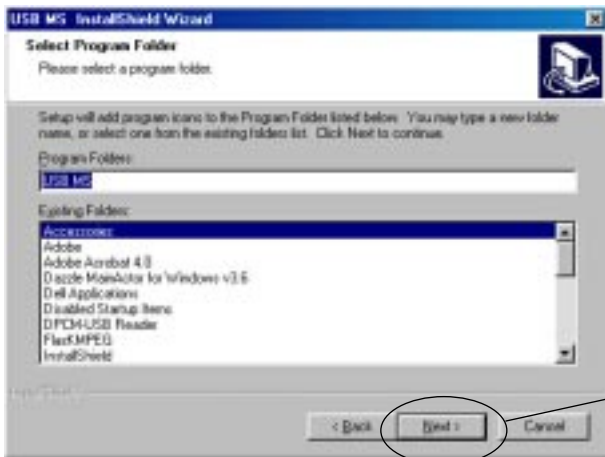


5. Read the license agreement. To agree to the terms of the License Agreement and continue the installation, click "**Yes.**"

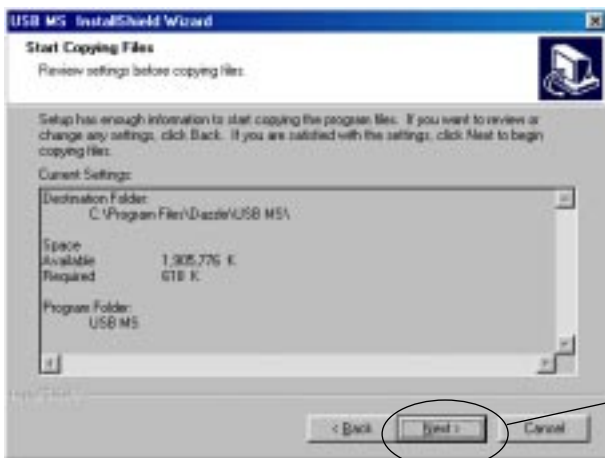


6. Click "**Next,**" to install the drivers to the default location on your computer.

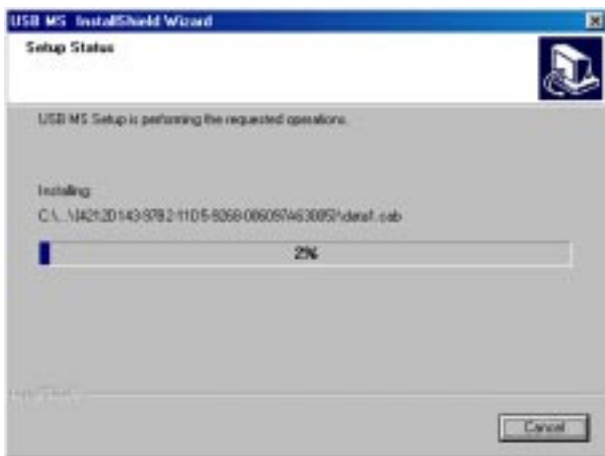
USER'S MANUAL



7. Click "**Next**" to accept the default program folder that will be installed for your Dazzle Card Reader.



8. An overview of the installation will appear. Click "**Next**" to continue the installation.



9. You will then see a status window advising the progress of the current installation (as shown on left).

USER'S MANUAL



Click **Next**.



Click **Finish**.



10. A dialog box will appear asking if you would like to read the included “Read Me” file. To view the “Read Me” file, click **Next**. A new window containing the Read Me will open. When finished viewing the “Read Me” file close the window. If you choose not to view the Read Me, deselect the check box near “Yes I want to view the Read Me file” and click **Next**.

11. Click **Finish** to complete the driver software installation.

NOTE: When installing the SmartMedia card reader on Windows 2000, after the driver software is complete, you will be prompted to select either “Yes I want to restart my computer now;” or, “No, I will restart my computer later.” To install the Dazzle OnDVD Software it will be necessary to select “No, I will restart my computer later.” If you do not wish install the OnDVD Software, simply clicking **Finish** will suffice.

12. To install the Dazzle OnDVD Bonus Software, click **Install Dazzle OnDVD Software.**

If you choose not to install the software, click **EXIT** and restart your computer. Refer to the sections “Connecting to a USB Port;” or “Connecting to a USB Hub” respectively for information on connecting your card reader.

USER'S MANUAL



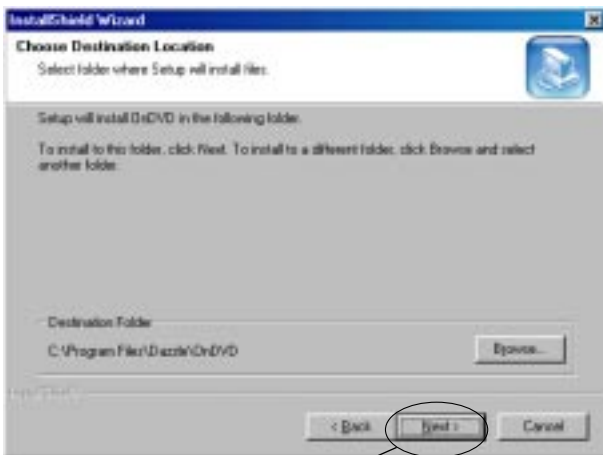
Click Next.

13. At the OnDVD Welcome Screen, click **"Next"** to continue the installation.



Click Yes

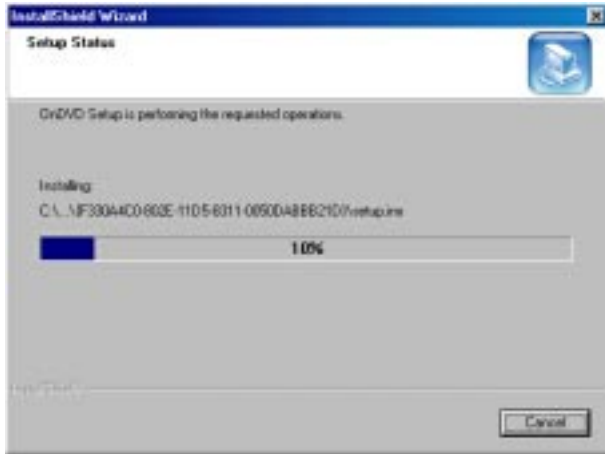
14. Read the License Agreement. To agree to the terms of the License Agreement and continue with the OnDVD installation, click **"Yes"** as shown on left.



Click Next

15. Click **"Next"**, to install OnDVD to the default location on your computer.

USER'S MANUAL



- 16.** OnDVD will begin the installation operation displaying a status box as shown on left.



Click **Finish**

- 17.** Click **“Finish”** to restart your computer.

INSTALLATION NOTE: If you attempt to attach the reader’s cable to the USB port of your PC or hub prior to installing the drivers, you may receive a message similar to the one shown on left.



If this occurs, click **“Cancel”**, install the driver software from the CD-ROM, and then connect the reader. For more information on attaching USB devices, proceed to the section “Connecting to the USB Port” (page 23) or “Connecting to a USB Hub” (page 24).

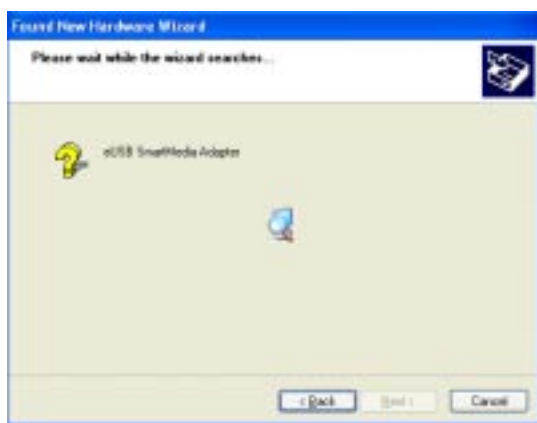
Congratulations! The installation is now complete. You may connect the Dazzle Card Reader to your computer after restarting. Proceed to “Connecting to a USB Port,” or, “Connecting to a USB Hub” respectively for information on connecting your card reader.

USER'S MANUAL

Installing the Driver Software on Windows XP:

IMPORTANT NOTE: For the CompactFlash, MultiMediaCard/Secure Digital, and Memory Stick card readers, driver installation is not required for Windows XP. Simply connect the card reader and access the reader by using the "RemovableDisk" icon in "My Computer". For the SmartMedia card reader, driver installation is required and is detailed below.

Installing your SmartMedia card reader on Windows XP



1. Connect your SmartMedia card reader to the USB port on your computer or USB hub. "New Hardware Found, eUSB SmartMedia Adapter," will be displayed in the lower right-hand corner of your desktop.
2. Next the "Found New Hardware Wizard" will be displayed. "Found New Hardware Wizard" will ask "If your hardware came with an installation CD or floppy disk, insert it now".
3. Insert the Dazzle Installation CD into your CD-ROM drive. By default, "Install the software automatically (Recommended)" will be selected. Inserting the Dazzle Installation CD will continue the installation process. You do not have to click the "Next" button.
4. Windows will automatically search for and install the drivers.
5. Once Windows installs the driver click **"Finish"** to complete the installation.

Congratulations! Driver installation is now complete.

USER'S MANUAL

Installing OnDVD on Windows XP:



1. Insert the Dazzle Installation CD and close any open applications.
2. A menu will appear with several options. Select **"Install Dazzle OnDVD"** from the menu to begin the installation.



Click Next

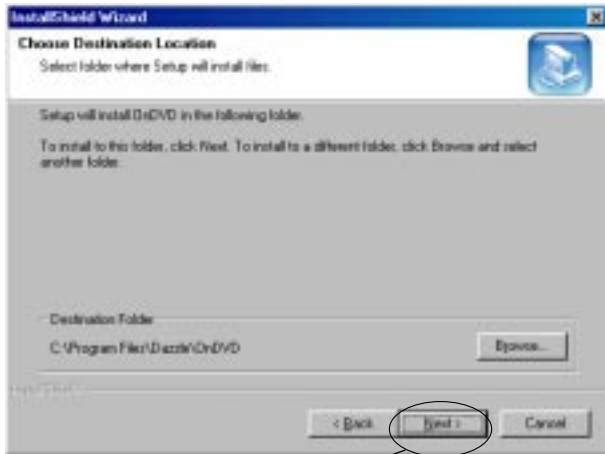
3. At the OnDVD Welcome screen, click **"Next"** to continue the installation.



Click Yes

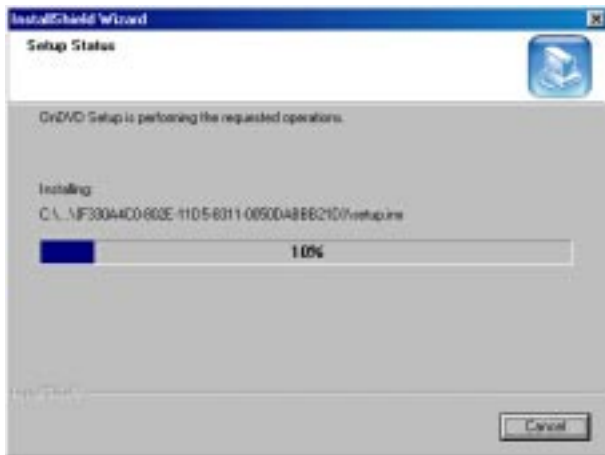
4. Read the License Agreement To agree to the terms of the License Agreement and continue with the OnDVD installation, click **"Yes"** as shown on the left.

USER'S MANUAL



Click **Next**

5. Click **"Next"** to install OnDVD into the default location of your computer.



6. OnDVD will begin the installation operation displaying a status box as shown on left.



Click **Finish**

7. Click **"Finish"** to complete the OnDVD installation and restart your computer.

Congratulations! The Dazzle OnDVD software installation is now complete.

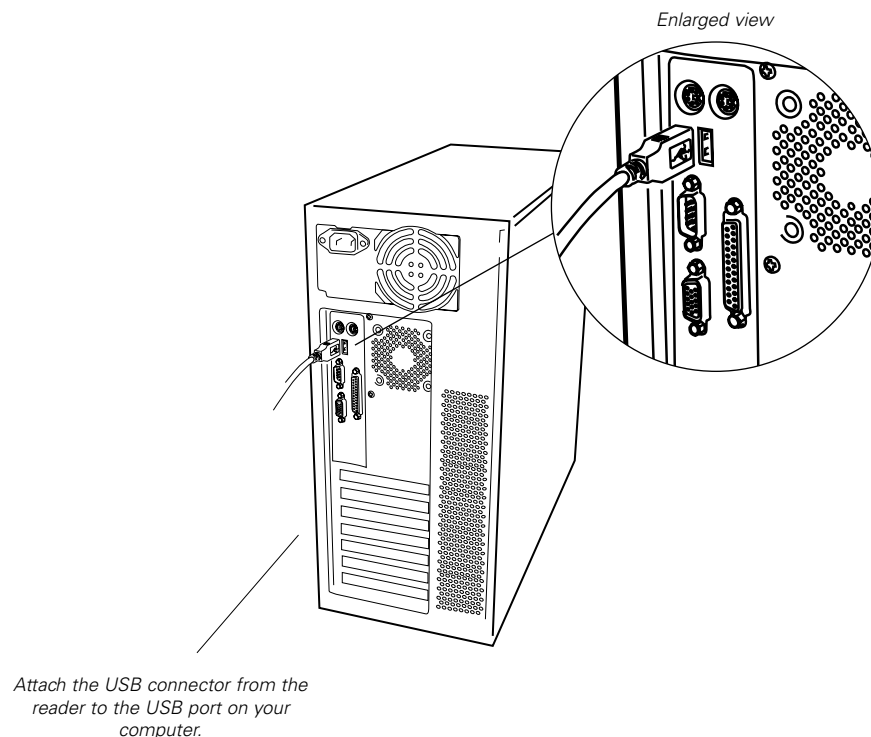
USER'S MANUAL

Connecting to a USB Port

- 1. Connect the USB connector of the card reader to the USB port on your computer.**

NOTE: The card reader may be connected to the computer while the computer is running.

- 2. Make sure the cable end is firmly connected.** Be careful not to confuse the upper and lower parts of the connector. Do not force connections, as this may damage the computer or the Dazzle Card Reader.



USER'S MANUAL

Connecting to a USB Hub

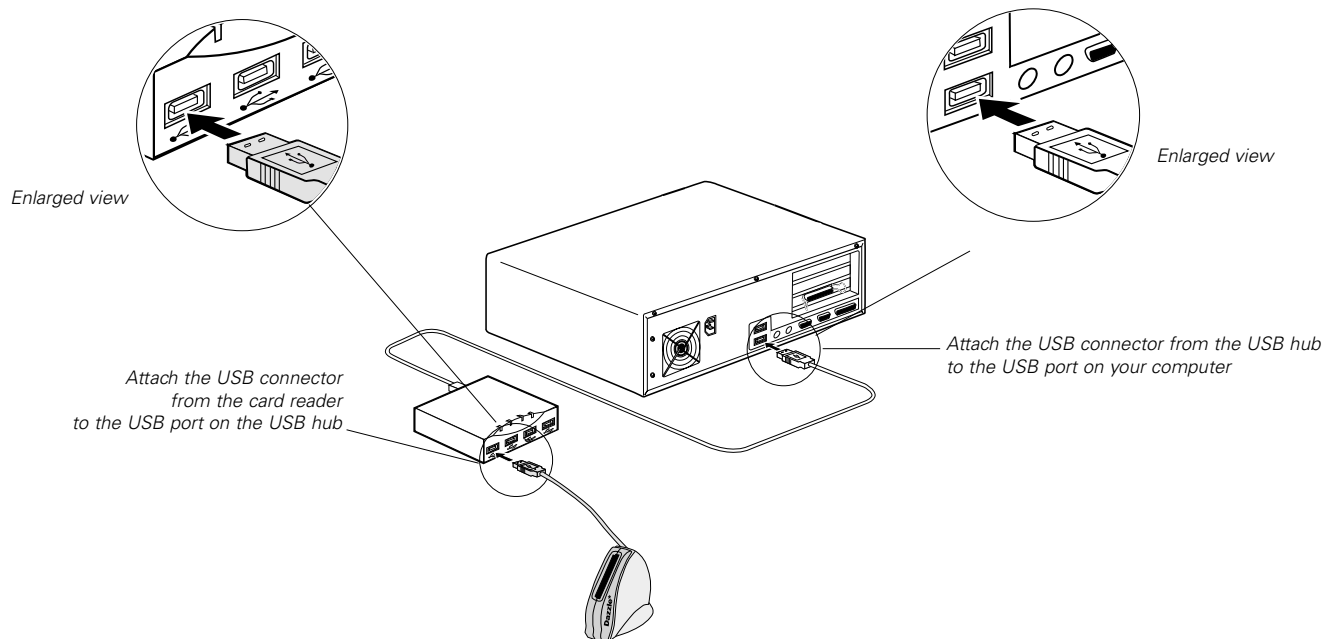
- 1. Connect the USB hub (purchased separately) to your computer's USB port.**

NOTE: Use only with a powered USB hub.












- 2. Then connect the Dazzle Card Reader to a port on the USB hub.**

NOTE: The card reader may be plugged into the computer or hub while the computer is running.

- 3. Make sure the cable ends are firmly connected.** *Be careful not to confuse the upper and lower parts of the connector. Do not force connections, as this may damage the computer or the Dazzle Card Reader.*



4 HOW TO USE Your Dazzle Card Reader

- Digital Media Card Compatibility — 
- Inserting a SmartMedia Card — 
- Inserting a CompactFlash Card — 
- Inserting a MultiMediaCard
 or Secure Digital Card — 
- Inserting a Memory Stick Card — 
- Mounting and Accessing a Card
 (Macintosh) — 
- Formatting Cards (Macintosh) — 
- Removing a Card (Macintosh) — 
- Inserting and Accessing a Card (PC) — 
- Formatting Cards (PC) — 
- Removing a Card (PC) — 

USER'S MANUAL

This section describes the operation relating to the Dazzle Card Reader and digital media cards. To avoid complications while attempting to use your Dazzle Card Reader, Dazzle recommends reading this entire chapter. For installation information, refer to “Chapter 2: Connecting to a Macintosh” (page 7) or “Chapter 3: Connecting to a PC Compatible” (page 13).

Digital Media Card Compatibility

This product is a USB card reader available in four different models - CompactFlash, MultiMediaCard/Secure Digital, SmartMedia, and Memory Stick. It is designed to simplify data transfer from a digital device to a computer utilizing the speed and convenience of the USB interface.

The SmartMedia model is only compatible with 3.3 Volt SSFDC format cards. This reader can accept SmartMedia cards in current capacities of up to 128MB.

The CompactFlash model is compatible with all current CompactFlash cards available on the market, as well as cards in the CFII and CF+ Type II formats, such as the IBM Microdrive.

The MultiMediaCard/Secure Digital model is compatible with most brands of MultiMediaCard and Secure Digital card formats.

The Memory Stick model is compatible with both Memory Stick and MagicGate Memory Stick.

NOTE: Secure mode of Sony MagicGate is not supported.

Inserting a SmartMedia Card

- 1.** Position the SmartMedia card so that it is on its side with the gold contacts located on the right hand side of the media. The media's notched corner should be facing down when the gold contacts are on the right. Please refer to the illustration on the next page for proper insertion.
- 2.** Insert the card into the slot with the gold contacts on the right and the notched corner facing down. **Gently** push the card in all the way until the card is fixed in place.

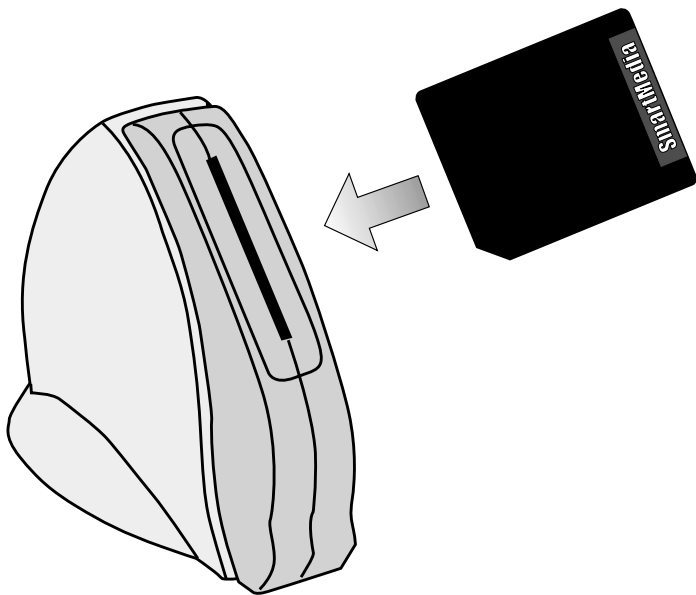
WARNING: Be careful not to insert the SmartMedia card in the wrong direction. Be sure to insert the SmartMedia with the gold contacts on the right and media notch facing down. If it is forced in, the reader or the SmartMedia may be damaged, or data on the card may be lost or corrupted. If the computer is not recognizing the media, or if it does not fit correctly, re-orientate the media and try reinserting it.

USER'S MANUAL

Inserting a SmartMedia Card (continued)

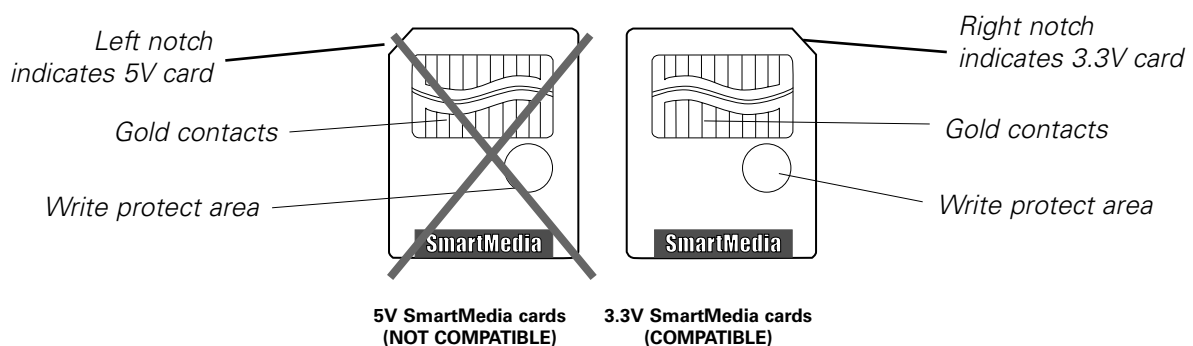
Insert the SmartMedia card as shown below. This product can only accept 3.3V SmartMedia cards. Notice the notched corner of the SmartMedia card. The location of the notch for a 3.3V SmartMedia card will appear on the right-hand side when you are looking directly at the gold contacts from the top (refer to the illustration at the bottom of the page). Flip the card on its side with the notched corner facing down and the gold contacts on the right hand side.

IMPORTANT NOTE: 5V SmartMedia cards are not supported.



NOTE: As shown on the left, you should have the SmartMedia positioned so that the gold contacts are on the right and the notched corner is on the bottom or facing down.

SmartMedia Card Comparison (view of cards from top)

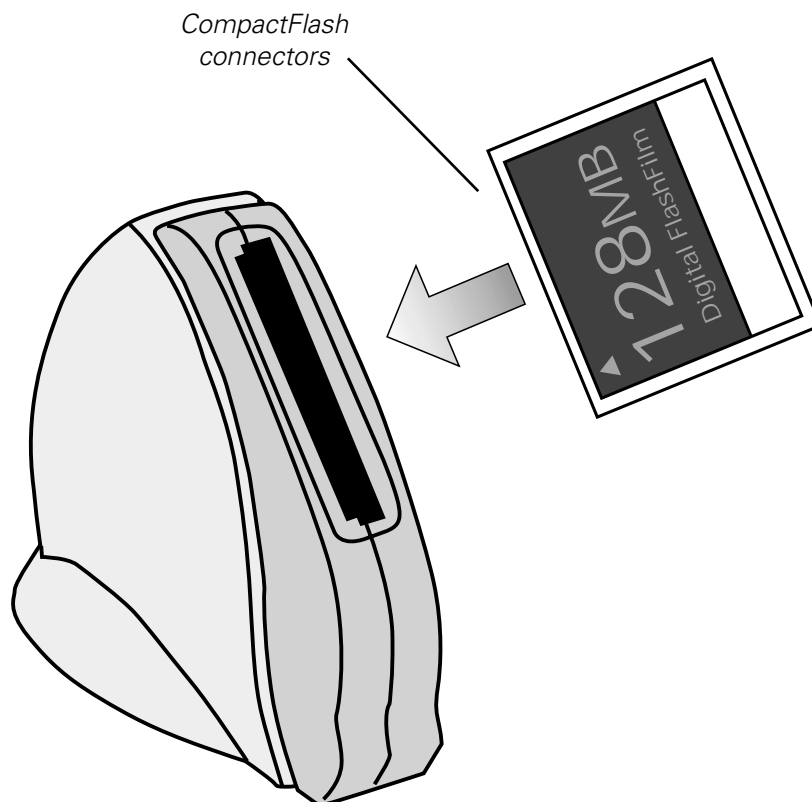


USER'S MANUAL

Inserting a CompactFlash Card

- 1.** Position the CompactFlash card on its side with the media manufacturer's label (refer to image at bottom of page) on the left and the connectors facing away from you. Insert the CompactFlash into the reader with the CompactFlash connectors first and label facing to the left Refer to image at the bottom of page for proper media insertion.
- 2.** Be certain of the orientation - all leading manufacturers of CompactFlash cards adhere to a specification requiring a positive keying of the card. Gently push the card in all the way until the card will insert no further. The card will slide in on the molded rails and a slight amount of resistance will be felt as the connectors make contact. This is normal.

WARNING: Be careful not to insert the CompactFlash card in the wrong direction - be sure the connectors are facing inward and the card's label is on the left side (refer to image at bottom of page for proper media insertion). If it is forced in, the reader or CompactFlash card may be damaged or data on the card may be lost or corrupted. If excessive force is required or the card just doesn't seem to fit, do not attempt to force the card in the reader, instead, contact Technical Support.



USER'S MANUAL

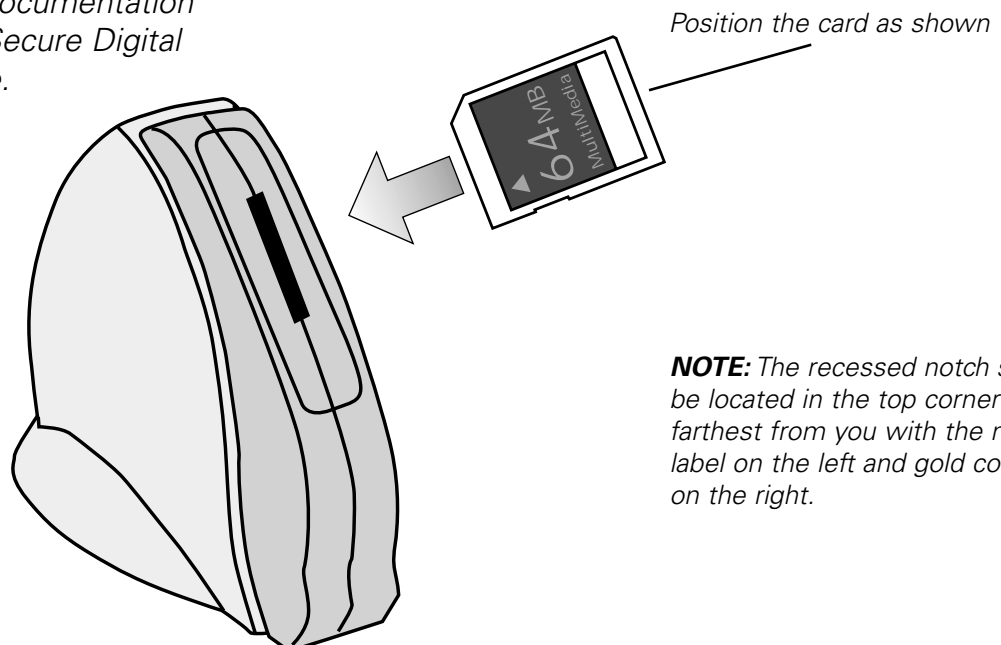
Inserting a MultiMediaCard or Secure Digital Card

- 1.** Position the MultiMediaCard or Secure Digital card on its side with the media's label on the left and gold contacts on the right. The media should be positioned so that the gold contacts are farthest from you and inserted into the reader first. Please refer to image at the bottom of page for proper media insertion.
- 2.** Insert the card into the slot gold contacts first and on the right. **Gently** push the card in all the way until the card is fixed in place.

IMPORTANT: Notice the notched corner of the MultiMediaCard or Secure Digital card and be careful not to insert the MultiMediaCard or Secure Digital card in the wrong direction. To insert properly, be sure that the card is positioned so that the recessed notch is facing up and the media's label is on the left. The media is to be inserted gold contacts first. Please refer to the illustration at the bottom of the page for proper media insertion.

WARNING: Insert the card gently. If it is forced in, the reader or the card itself may be damaged or data on the card may be lost or corrupted. If excessive force is required, or the card just doesn't seem to fit, do not attempt to force the card in the reader, instead, contact technical support for assistance

NOTE: To utilize advanced features of Secure Digital cards as well as locking and encryption features, please refer to the documentation provided with your Secure Digital card or digital device.



USER'S MANUAL

Inserting a Memory Stick card

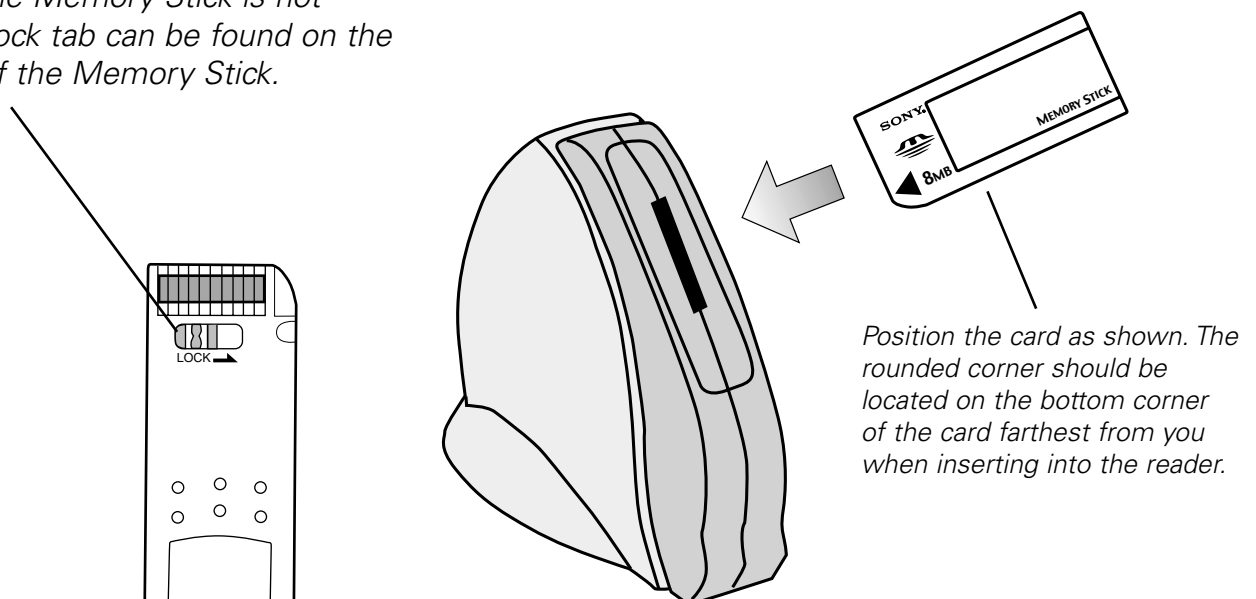
1. Position the Memory Stick on its side with the media's label on the left and the gold contacts on the right. Position the media so that the gold contacts are farthest from you. Please refer to image at the bottom of page for proper media insertion.
2. Insert the Memory Stick into the slot gold contacts first and on the right. **Gently** push the Memory Stick in all the way until the card is fixed in place.

IMPORTANT: Notice the rounded corner of the Memory Stick card and be careful not to insert the Memory Stick in the wrong direction. To insert properly, be sure that the card is positioned so that the rounded corner is in the bottom corner with the gold contacts on the right. When inserted properly, the gold contacts will be inserted into the reader first and will be located on the right. Please refer to the image at the bottom of page for proper media insertion.

WARNING: Insert the Memory Stick gently. If it is forced in, the reader or the Memory Stick may be damaged, or data on the card may be lost or corrupted. If excessive force is required, or the card just doesn't seem to fit, do not attempt to force the card in the reader, instead contact Technical Support.

NOTE: The secure mode of Sony MagicGate is not supported.

NOTE: If you intend on writing to or deleting from your Memory Stick media, make sure the Memory Stick is not locked. The lock tab can be found on the under side of the Memory Stick.



USER'S MANUAL

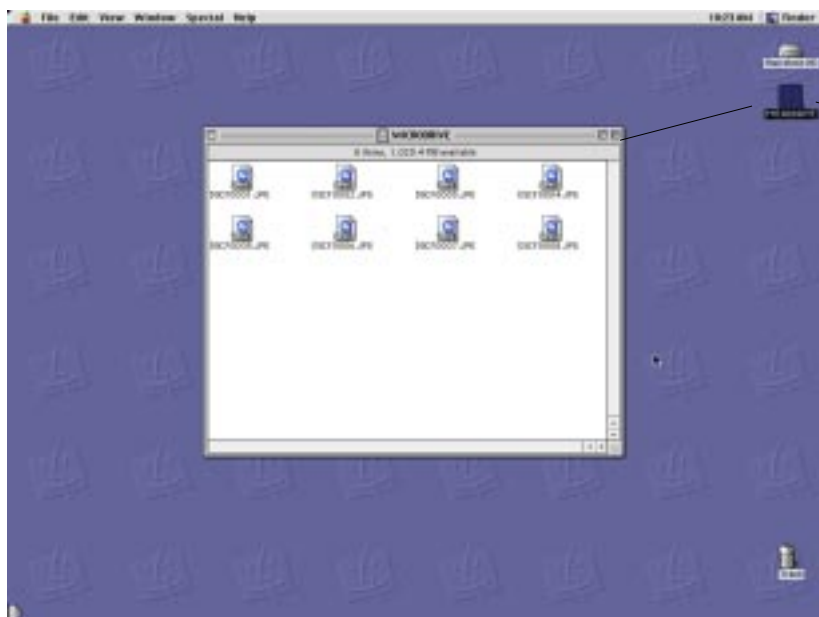
Mounting and Accessing a Card (Macintosh)

After a card is inserted on a Macintosh computer, a distinct icon will appear on the Mac OS desktop. This is the "mounted" state, which enables read and write operations for the card. The time required between card insertion and mounting depends on the type and brand of card. Usually, a card can be mounted and accessed within a few seconds.

When a card is mounted, it can be used in the same fashion as a floppy or other type of removable disk. Double-click the icon to open its respective file window. For example, in the screen shot below - an IBM 340 MB Microdrive was inserted and mounted. By double-clicking on the Microdrive icon you will see it contains 10 high resolution TIF images taken on a digital camera. The images stored on this Microdrive can be copied, opened, edited, deleted, and so forth.

With the Dazzle Card Reader, audio and video files, cell phone databases, and more can now be shared easily between your digital device (camera, cell phone, MP3 player, etc) and your Macintosh.

IMPORTANT: Be sure you have installed the driver software (when necessary) prior to attempting to operate the card reader. Also be sure the Apple "File Exchange" control panel is set to load in your system folder - you can activate it using the Apple "Extensions Manager" control panel.



MICRODRIVE

Removable Disk Icon
(example shown representing:
IBM 340 MB Microdrive)

Files contained within a card can be
accessed by double-clicking on the
card's respective icon.

USER'S MANUAL

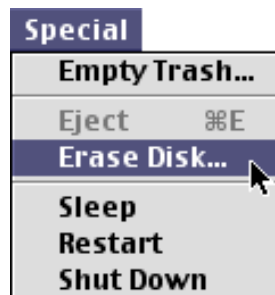
Formatting Cards (Macintosh)

There may be instances where you may wish to format a card in the card reader rather than in the original digital device (camera, MP3 player, etc.). There may also be times when you may be required or prompted to format your card. As such, please read the information in this section for information on formatting your media.

WARNING: *Formatting a card will completely erase all data currently stored on the card. If there are important images or files you wish to safeguard for later use, make a backup copy on your hard drive, CD-R drive, or other type of removable media.*

NOTE: Screenshots may vary slightly from those on your computer.

1. Select the "**Erase Disk**" command in the "Special" menu (as shown below).



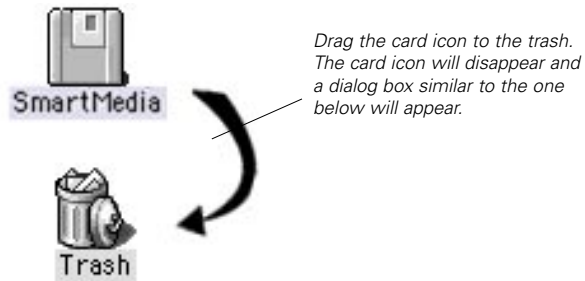
2. As formatting a card will completely erase any data currently stored on the card, a dialog box will appear asking if you wish to completely erase the card as shown below. Click "**Erase**" to begin formatting the card, or click "**Cancel**" if you do not wish to format the card.



USER'S MANUAL

Removing a Card (Macintosh)

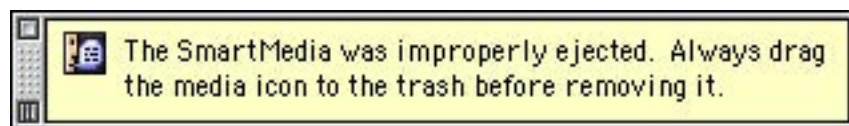
1. Wait until all operations are complete before attempting to remove the card. Removing a card during access operations will cause the data to be lost or corrupted.



2. Drag the card icon and drop it onto the trash icon as shown above. The card icon will disappear from the desktop. A dialog box similar to the one below will appear. It is now safe to remove the card. To remove a card, grasp the end of the card with your thumb and index fingers, and remove the card from the slot.



WARNING: Do not remove a mounted card without first dragging the card icon to the trash. You may risk the chance of corrupting data stored on your card if removed improperly. If removed improperly, a warning message may appear on the screen warning you that the media was not properly ejected. Depending on the version of reader and Mac OS you are using, the error messages received may vary. In some cases you may not receive a message at all.



USER'S MANUAL

Inserting and Accessing a Card (PC)

With a PC compatible computer running Windows (98, 2000, Me, or XP), an icon will appear under "My Computer" as a "Removable Disk" with a newly assigned drive letter (see the illustration below) . Double-click on the icon to open the drive. If media is not inserted while double-clicking the icon, the message "Device not ready" or "Please insert a disk" will appear. Insert a card and try accessing the drive again. Once you have opened the drive by double-clicking its icon, the drive's contents will be displayed. This is how you will access the digital images or data stored on your media.

NOTE: Digital cameras will usually create a folder or folders on the digital media card which will contain your digital images. To access the digital images, you must first open the folder(s) and then click on the icon(s) representing the digital image(s) you wish to view. The images stored on your digital media can be copied, opened, edited, deleted, and so forth.



USER'S MANUAL

Formatting Cards (PC)

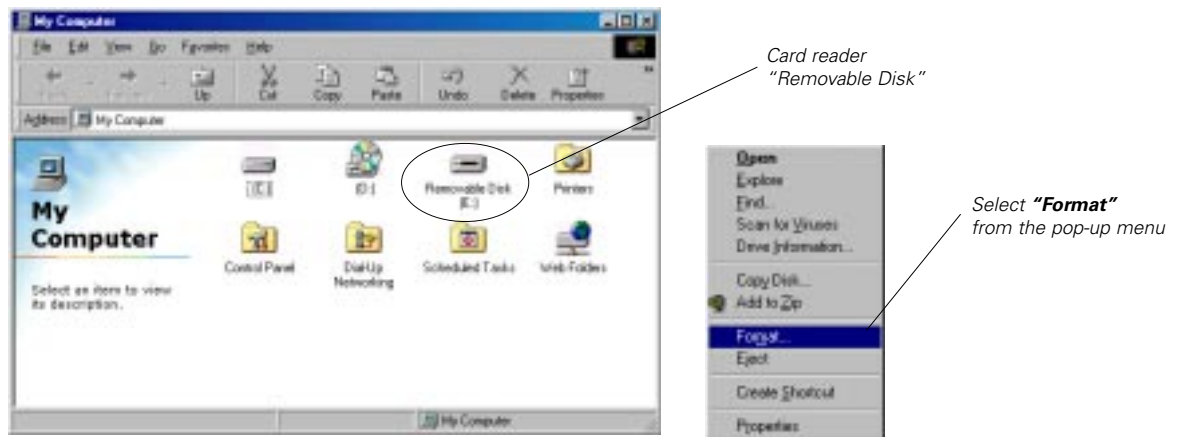
There may be instances where you may wish to format a card in the card reader rather than in your original digital device or when the format option is not present. There may also be times when you may be required or prompted to format your card. As such, please read the information in this section for information on formatting your media.

WARNING: *Formatting a CompactFlash, SmartMedia, MultiMediaCard/Secure Digital, or Memory Stick card will completely erase all data currently stored on the card. If there are important images or files you wish to safeguard for later use, make a backup copy on your hard drive, CD-R drive, or other type of removable media.*

Formatting CompactFlash, MultiMediaCard, Secure Digital, SmartMedia, or Memory Stick cards:

NOTE: If you have not installed the drivers for your card reader or if driver installation is not required; you may format the media using the standard Windows operating system format option only.

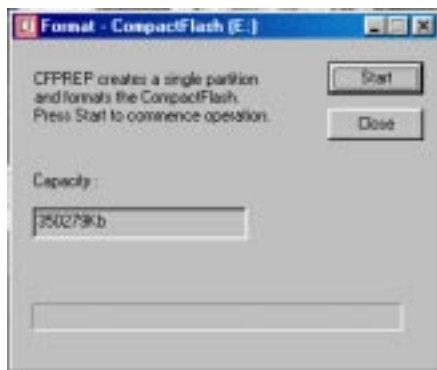
This can be done by right-clicking the **“Removable Disk”** icon (drive letter will be assigned) located in **“My Computer”** and selecting **“Format”** from the pop-up window. Follow instructions as prompted. Formatting your media using the standard Windows format option conforms only to Windows operating system specifications.



USER'S MANUAL

If you have installed the driver software and/or utility for your card reader, proceed with format using the following steps:

1. Click on the **"Start"** button located in the lower left hand corner of your desktop and select **"Programs"** from the pop-up menu.
2. This will display a list of the programs installed on your computer. From the list of programs select your card reader. Depending on which card reader you have purchased and installed, the listings will be different. For example, if you have installed the CompactFlash card reader, select **"USB CF"** from the program's list.
3. Once you have selected your card reader model you will notice there is a media prep utility for that specific media type (i.e. CFPREP for CompactFlash, SMPREP for SmartMedia, CARDPREP for MultiMediaCard and Secure Digital, and MSPREP for Memory Stick). Select the media prep utility that pertains to your model card reader. You will see a window similar to one of the examples shown below.



CompactFlash format screen:

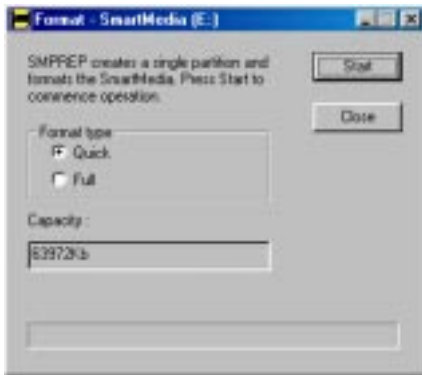
The CFPREP utility will create a single formatted partition on your CompactFlash card - no other formatting options are available.



MultiMediaCard / Secure Digital format screen:

The CARDPREP utility for your MultiMediaCard or Secure Digital cards, provides two format options. In general, select the "DOS FAT" option to format your card. However, in some instances owners of MP3 players may be required to format a card in "ROS MP3" format. Consult the manufacturer of your MP3 device to find out if it uses this file format.

USER'S MANUAL



SmartMedia format screen:

The SMPREP utility provides two format options for your SmartMedia card. The "Quick" format option is selected by default, and recommended for general use to erase data on your SmartMedia card. If you experience problems with your SmartMedia, you may wish to select the "Full" format option to completely erase and scan your SmartMedia card for any bad data blocks.



Memory Stick format screen:

The MSPREP utility provides two format options for your Memory Stick card. The "Quick" format option is selected by default, and recommended for general use to erase data on your Memory Stick, if you experience problems with your Memory Stick you may wish to select the "Full" format option to completely erase and scan your Memory Stick for bad data blocks.

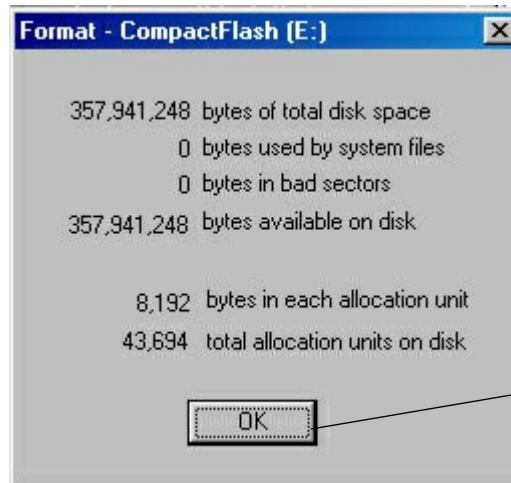
4. Click **"Start"**. A dialog box similar to the example shown below will appear warning that you are about to erase everything on the media.



5. Click **"YES"** to proceed. This will format the media, bringing up a format status screen until the format completion.

USER'S MANUAL

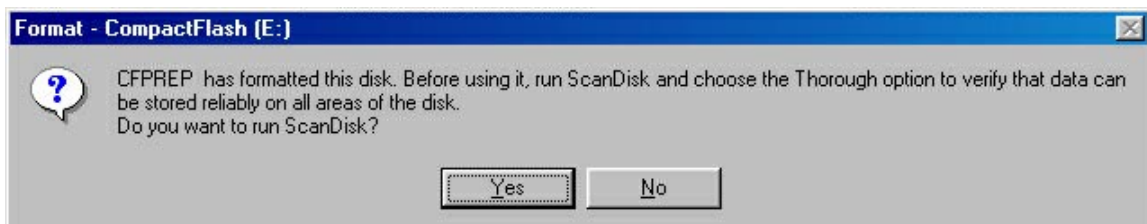
6. Click **"OK"**. Formatting is now complete.



Click **"OK"** to finish the format.

IMPORTANT NOTE for CompactFlash, MultiMediaCard/Secure Digital, and Memory Stick card reader owners:

After formatting MultiMediaCard, Secure Digital, Memory Stick, and CompactFlash cards, a dialog box (similar to the one below) may appear recommending that you run the "ScanDisk" Utility. If you are experiencing problems with your card you may wish to click **"Yes"** to verify that data can be stored reliably on all areas of your card. However in day-to-day use clicking **"No"** will suffice.



7. Finally, click **"Close"** on the format screen to exit the formatting utility.

USER'S MANUAL

Removing a card (PC)

- 1.** Wait until the operations are complete before attempting to remove the card. Removing a card during access operations will cause the data to be lost or corrupted.
- 2.** To remove a card, grasp the end of the card with your thumb and index fingers, and remove the card from the slot.

USER'S MANUAL

Dazzle OnDVD

Software for PC Compatible
Computers

Introduction 

Definitions 

Getting Started 

Menu Items Reference 

Troubleshooting 

Upgrade Information 

Dazzle*

USER'S MANUAL

Dazzle OnDVD Software

INTRODUCTION

Dazzle OnDVD is easy-to-use software that lets you take your digital pictures and turn them into a slideshow you can record to a CD for playback on your DVD player. Simply select the pictures you want to put into your slideshow (maximum 500 pictures per CD), arrange them on the timeline and record the slideshow to a CD with your CD-Recorder.

OnDVD records two copies of your pictures to the CD disc. The first session is a slideshow in the VideoCD (VCD) format, which can be played back in a DVD player (or VCD player), connected to your TV. The second session is a backup copy of all your high quality pictures, which can be read back from your PC's CD-ROM or DVD-ROM drive. If you put the CD into a DVD Player, the slideshow will automatically play. If you put the CD into your PC, you can automatically look at the archived pictures.

DEFINITIONS

CD-R Discs (CD-Recordable) - On this media type, you can write data to a CD but you cannot erase it once you have written it. Not all DVD players can read CD-R discs. If your DVD player does not read CD-R discs, try recording your slideshow on a CD-RW disc. Check your DVD player owner's manual to see if your player reads CD-R discs.

CD-RW Discs - On this type of media, you can write, erase and re-write data many times. All DVD Players should be able to read CD-RW media.

CD-Recorder - A PC peripheral which records information from a computer onto a CD-R or CD-RW disc.

DVD - Digital Video Disk. DVD is the latest format for high quality video. DVD is an extremely versatile and high quality format and is used extensively for distributing movies. DVDs can be played back in DVD players connected to a TV or also in DVD-ROM drives on a computer using DVD player software.

DVD Player - A consumer electronics device which can be connected to a TV to play back DVDs. Most DVD Players can also play back VideoCDs.

USER'S MANUAL

DEFINITIONS (continued)

JPG - Also known as 'JPEG', this file format is used by the vast majority of digital cameras and applications for digital photographs. JPG is the predominant file format for digital picture files on the Internet.

VCD - VideoCD. VideoCD is a special CD format normally used for video but which can also be used for photos. VCDs can be played in all VCD Players and almost all DVD players connected to a TV.

VCD Player - A consumer electronics device which can be connected to a TV to play back VideoCDs. VideoCD Players are popular in Asia but seldom found elsewhere.

GETTING STARTED

System Requirements-

Operating Systems- Windows® 98
Windows® 2000
Windows® NT
Windows® ME
Windows® XP

CPU- Pentium® II 300 MHz or higher
AMD K6® III 400 MHz or higher

RAM- 32 MB required
64 MB recommended
Available Disk Space
32 MB for Application Installation
Up to 1 GB available for workspace

Other necessary hardware:

Digital Camera
Flash Memory Card Reader
CD-R or CD-RW Recorder
DVD Player, VCD Player, CD-ROM or DVD-ROM Drive

USER'S MANUAL

Tutorial - How to use Dazzle OnDVD 1.5

Creating VCD slideshows

Step 1 - Locate your digital pictures

The pictures may be in a directory on your computer or in the digital camera. In most cases, your digital camera loads pictures onto a flash memory card. Access these pictures easily by removing the card from the camera and inserting it into a flash memory card reader. You can view the contents of the card reader in Windows Explorer.

Step 2 - Launch Dazzle OnDVD

- Click the **'Start'** Button, then select **'Programs'** and then **'OnDVD'**

Step 3 - Load your digital pictures

- Click on the **'Add Directory'** button to add all the files in a folder or click **'Add Image'** to add one image at a time
- Navigate to the directory which contains the pictures you wish to import
- Select that directory or image and click **'OK'**

A dialog box will appear to inform you of how many images were added.

- Click **'OK'**

Your pictures will be added to the Picture List in the left pane of the software and a thumbnail image of the pictures will be displayed on the timeline bar in the bottom pane in the order in which they will appear in the slide show.

Step 4 - Select images to view

Click on the filename in the Picture List to display that picture in the Picture Preview window.

USER'S MANUAL

Tutorial (cont.)

Step 5 - Remove unwanted pictures

- Click on the picture that you wish to remove from your slideshow
- Click the **'Remove'** button or press the **'Delete'** key to remove the selected picture
- Click the **'Remove All'** button to remove all the pictures from your slideshow.

The selected pictures will be removed from the Picture List and the Timeline but will not be deleted from your computer.

Step 6 - Preview your slideshow

Before you record the CD, make sure you are happy with the slideshow by previewing it.

- Click the **'Preview'** button in the toolbar to view the slideshow
- The slideshow will return to the main screen when the preview is complete
- Press the **'Esc'** key to cancel the preview at any time

Note: Each picture in the slideshow will stay on the screen for 3 seconds before moving to the next picture. If you wish to increase the amount of time that a certain picture will be displayed, click the right mouse button on the name of the picture in the image list and go to **'Display Time'**. After you have changed the display time, click **'OK'**.

Step 7 - Write the CD

Now that you have the slideshow ready, you can create the CD.

- Insert a blank CD-R or CD-RW disc into the CD-Recorder
- Click the **'Write VCD'** button on the toolbar

Step 8 - Play your CD in a VCD or DVD player

Insert the CD into a VCD or DVD player, and you will be able to view your slideshow on a television screen. The slideshow plays in an auto-repeat loop. When you are finished viewing the slideshow, just press the **'Stop'** button on the DVD player and eject the disk.

USER'S MANUAL

Tutorial (cont.)

Step 9- *See the original picture files on the CD*

- Insert the CD into the CD-ROM or DVD-ROM drive on your PC.
 - The viewer application should automatically open
 - If the viewer window does not automatically launch, open Windows Explorer.
 - Navigate to the drive letter of the CD-ROM or DVD-ROM drive
 - Launch the application on the CD named 'Viewer.exe'
 - The OnDVD Viewer application will be launched.

- In the OnDVD Viewer window, select the CD-ROM or DVD-ROM drive from the drop-down list all of the original high-resolution pictures are stored on this disc. In addition to creating a slideshow disc, you have created an archive of the original pictures on the CD.

Webcasting

- Follow steps 1-7 above to create your slideshow

- Click the '**WebCast**' button and then click '**Next**'. OnDVD will create a video slideshow to send to the web. Click '**Next**' again and type in your Dazzle WebCast Theater username and password. Then click '**Login**'. If you have never used WebCast Theater before, click '**Register**' and fill out the appropriate information. Once you are finished, anyone can view your files by going to the Dazzle Webcast Theater website by first visiting www.Dazzle.com and selecting "**Webcast**", then "**Webcast Theater**".

USER'S MANUAL

MENU ITEMS REFERENCE

File/Exit - Closes the Dazzle OnDVD application

Video CD/Add Picture - Adds a specific picture to the timeline

Video CD/Add Directory - Adds an entire directory of pictures to the timeline

Video CD/Remove Picture - Removes a selected picture from the timeline

Video CD/Remove All - Removes all pictures in the Picture List from the timeline

Video CD/Write VCD - Creates a Video CD from your slideshow

View/Picture List - Toggles the view of the Picture List window pane

View/Timeline - Toggles the view of the Timeline window pane

View/Options - Opens the Video Standard Options. Most TV's in North America and Asia are NTSC.
Most in Europe are PAL.

Help/About - Gives version information for Dazzle OnDVD

Help/Help Topics - Launches the help file

TROUBLESHOOTING

1. My slideshow won't play on my DVD player.

- a) Check the Owner's Manual of your DVD player to see if it can read VCDs (VideoCDs). If it can, go on to step b. If it cannot, you will not be able to view your slideshow on this DVD player.
- b) If you recorded the slideshow onto a CD-R disc, check the Owner's Manual of your DVD player to see if your DVD player can read CD-R discs. If it can read a CD-R disc but it will not play the slideshow, you probably have a damaged CD-R disc. Re-record it and try again. If your DVD player cannot read CD-R discs, re-record your slideshow to a CD-RW disc and try to play it again.
- c) If you recorded the slideshow onto a CD-RW disc and it will still not play, check the bottom of the CD-RW disc for fingerprints or scratches. Re-record to a new CD-RW disc if necessary.
- d) If you are unable to find information in your DVD player Owners Manual, you can often find the information on the Internet. Check the DVD player's manufacturer website. You can also visit www.vcdhelp.com for information on many different DVD players.

2. I can't read the archived files from the CD on my PC.

- a) You must use the included file viewer program to read the CD from your PC.
- b) If the viewer program did not automatically launch when you inserted the CD, remove the CD and re-insert it.
- c) If the viewer program still did not launch, click on the '**Viewer.exe**' file on the CD.
- d) If the viewer launched and no files are visible, re-record the CD and try again.

TROUBLESHOOTING (continued)

3. I can't record to my CD-Recorder. Does OnDVD support my CD-Recorder?

- a) OnDVD supports almost all commercially available CD-Recorders and new recorders are constantly being added. If you cannot record to your CD-Recorder, check the Dazzle website for software upgrades.
- b) If you downloaded all upgrades and you can still not record to your CD-Recorder, call technical support to check on when support for your CD-Recorder will be added.
- c) Make sure the CD is blank. OnDVD requires that the destination CD be blank.

For the most up to date support information, please refer to:

<http://www.Dazzle.com/support/trouble.html>

UPGRADE INFORMATION

For OnDVD upgrade information, please go to **www.Dazzle.com**.

USER'S MANUAL

Troubleshooting

Your Dazzle Card Reader

Common Trouble Shooting Questions and Answers 

Dazzle*

USER'S MANUAL

Troubleshooting your Dazzle Card Reader

Common Troubleshooting Questions and Answers

Installation and use of your card reader is relatively easy and normally should not produce complications. However, if you are experiencing difficulties with your card reader, please refer to the following troubleshooting guide for a possible solution. Additional tips and solutions as well as product information can be found on our interactive Support Website: www.Dazzle.com/support.

1. I have connected my card reader to my computer's USB port and was unable to find the appropriate drivers during installation. What do I do?

PC Compatible:

Prior to connecting the card reader to your computer's USB port, you must first install the driver software (if required). The Memory Stick, CompactFlash, and MultiMediaCard/Secure Digital card readers do not require driver installation on Windows Me, Windows 2000, and Windows XP. The SmartMedia card reader requires driver installation. The SmartMedia reader software for Windows 98, Me, 2000, and XP, is located on the accompanying installation CD-ROM as is the Windows 98 software for the CompactFlash, Memory Stick and MultiMediaCard/Secure digital readers. Please refer to the sections titled "Installing the Driver Software on Windows 98, Me, and 2000" or "Installing the Driver Software on Windows XP" respectively.

Macintosh:

Prior to connecting the card reader to your computer's USB port, you must first install the driver software (if required). The Memory Stick, CompactFlash, and MultiMediaCard/Secure Digital card readers do not require driver installation on Mac OS 9.x and greater. The SmartMedia card reader requires driver installation on Mac OS 8.5 and greater. SmartMedia, CompactFlash, and MultiMediaCard/Secure Digital Reader driver software for Mac OS 8.6-9.x is located on the accompanying installation CD-ROM. The Memory Stick card reader is only supported on Mac OS 9.x and above where it does not require driver software installation. For driver software installation information, please refer to the section titled "Installing the Driver Software"

USER'S MANUAL

- 2. I have installed the card reader's drivers (where required) and have the card reader plugged into my USB port. When I insert my digital media card nothing happens. How do I access my images?**

PC Compatible:

This digital card reader/writer is accessed as a removable disk. In order to access the digital images or data stored on your media card; you must access the card reader through its "Removable Disk" icon. This can be done by first double-clicking on the "**My Computer**" icon located on your Windows desktop. This will open the "My Computer" window. Here you will see a "Removable Disk" icon (drive letter will also be assigned) representing your reader. Now double-click on the "**Removable Disk**" icon to display the contents of the media inserted in your card reader. This is where your digital images or data will be located.

Digital cameras will usually create a folder on the digital media card, which will contain your digital images. Depending on the digital camera you have, the folder names will vary. Double-click on the respective folder name to access the digital images contained within. You can create a preview by double-clicking on one of the image icons.

Macintosh:

Once a card is inserted on a Macintosh, a distinct icon will appear on the Mac OS desktop. This is the "mounted" state which enables read and write operations for the media. Opening the media icon will allow you access to the images stored on your respective media card. Depending on the media used, the time it takes a media card to mount may vary.

Digital cameras will usually create a folder on the digital media card, which will contain your digital images. Depending on the digital camera you have, the folder names will vary. Double-click on the respective folder name to access the digital images contained within. You can create a preview by double-clicking on one of the image icons.

USER'S MANUAL

3. I have inserted my media card into my card reader, but I am unable to access my data.

If you are using a SmartMedia card, make sure that you have inserted the SmartMedia card into the card reader with the gold contacts on the right and the notched corner facing down and farthest from you. For more information regarding inserting your SmartMedia, please refer to the section titled "Inserting a SmartMedia Card" in the User's Manual.

If you are using MultiMediaCard or Secure Digital cards, make sure that you have inserted the card with the gold contact on the right and the media's label on the left. For more information regarding inserting your MultiMediaCard or Secure Digital card, please refer to the section titled "Inserting a MultiMediaCard or Secure Digital card" in the User's Manual.

If you are using a CompactFlash card or Microdrive, make sure that you are inserting the media with the media label on the left and CompactFlash connectors inserted into the reader first. For more information regarding inserting CompactFlash card or Microdrive, please refer to the section titled "Inserting a CompactFlash card" in the User's Manual.

If you are using a Memory Stick card, make sure that you are inserting the media with the gold contacts on the right and the media label on the left. For more information regarding inserting Memory Stick cards, please refer to the section titled "Inserting a Memory Stick card" in the User's Manual.

USER'S MANUAL

4. I can see the images on my media inserted in the Card Reader, but how do I download them to my computer.

PC Compatible:

Images and data can be downloaded or transferred to your computer using basic Windows file transfer techniques. Two of such techniques are drag and drop as well as copy and paste.

For information on drag and drop as well as copy and paste, please refer to your "Windows Help" file on Windows 98, Me and 2000, or "Help and Support" on Windows XP, under the "Start" button located in the lower left corner of your Windows desktop. Once you have opened "Windows Help", begin by clicking on the **"Index"** tab. This will display the contents of the "Windows Help". Now scroll down to and double click on **"copying files, folders"**. You may also consult any usage literature provided with your Windows operating system as well. To access information on copy and paste as well as drag and drop on Windows XP, simply enter copy and paste into the search bar.

Macintosh:

When a card is mounted, it can be used in the same fashion as a floppy or removable disk. Double-click on the icon to open its respective file window. Once you have opened the file window, holding down the option key, drag and drop the desired images from the media to a location of your choice.

5. I am trying to write to my Memory Stick card, but I am getting an error that the Memory Stick is write protected or locked.

Please make sure that the lock tab located on the bottom of the Memory Stick media is not in the lock position. Locking your Memory Stick media is a safety feature that prevents writing to and deleting from your Memory Stick.

USER'S MANUAL

- 6. I have installed the driver software (where necessary) and connected the card reader to my Macintosh computer. Every time I insert a media card, I receive the message; "This disk is unreadable by this computer. Do you want to initialize the disk". My only options are to "initialize", or "eject".**

This error may appear if your File Exchange control panel is disabled. Click eject so you will not format the media. To enable File Exchange, proceed with the following steps.

1. Click on the apple icon and select "**Control Panels**" from the Apple Menu.
2. Select "**Extensions Manager**" from the Control Panels drop-down menu.
3. Scroll to the top of the Extensions Manager windows using the scroll bar on the far left and make sure that you are looking in the Control Panel section of Extensions Manager.
4. Click inside the small square box to the left of the File Exchange listing. This will place an X in the small square box also enabling the Control Panel.
5. Restart the computer by clicking the "**Restart**" button located at the bottom of the Extensions Manager window.

- 7. I have Windows NT 4.0 and cannot get my card reader to work. What do I do?**

This card reader is not compatible with the Windows NT 4.0 operating system. The Windows NT 4.0 operating system does not support the Universal Serial Bus Interface. No drivers are available for use on Windows NT. Driver software provided on the readers installation disk is not intended for installation on Windows NT, and should not be installed on any computer running Windows NT.

- 8. I have Windows 95 and cannot get my card reader to work. What do I do?**

This card reader is not compatible with the Windows 95 operating system which has limited support for USB devices. No drivers are available for use on Windows 95. Driver software provided on the reader's disk is not intended for installation on Windows 95, and should not be installed on any computer running Windows 95. If you are running Windows 95, it is strongly suggested that you upgrade to Windows 98 or higher.

USER'S MANUAL

7

OBTAINING Technical Support

Contacting Technical Support — 

Returning Products for Service — 

Limited Warranty — 

Dazzle*

USER'S MANUAL

Contacting Technical Support

The Dazzle USB Reader is relatively easy to maintain and operate and normally should not produce complications. However, if you need assistance or have questions of any kind, our trained staff members are ready to help. Our Technical Support Department can be reached by calling 203-315-4230 from 8:00 a.m. to 9:00 p.m. (EST), Monday through Friday or by fax at 203-483-5985. In the U.K, please contact local support at +44 118 979 1026. We recommend having your product and computer nearby when calling to facilitate troubleshooting. E-mail support as well as 24 hour Technical Support is available via our web site: **www.Dazzle.com/support**.

Returning Products for Service

When calling for support, if a Technical Support specialist recommends that you return the product, the Technical Support specialist will transfer you to Customer Service for a Return Merchandise Authorization (**RMA**) number. The RMA number must appear on the outside of your shipping carton. Our Receiving Department will refuse any package that does not carry an RMA number. Pack the Dazzle card reader in a manner that it fits snugly and is surrounded with protective packing material.

- Improper packing can result in damage to the device, and may result in voiding the warranty.
- We will not accept an improperly packaged device.

You are responsible for paying the cost of shipping the device in for repair; we will pay the return shipping on any Warranty RMA. Be sure to include the RMA number on the outside of the box. Please ship the device to:

SCM Microsystems, Inc.
Retail Brands Group
20 Carter Drive
Guilford, CT 06437 USA

USER'S MANUAL

SCM Microsystems, Inc. LIMITED WARRANTY

SCM Microsystems, Inc. warranty obligations are limited to the terms set forth below:

SCM Microsystems, Inc., Retail Brands Group, ("The Company") warrants this product against defects in material and workmanship for a period of one (1) year from the date of original retail purchase. For residents of the European Union, the warranty is two (2) years from the original date of purchase

This limited warranty is made only to the original end user purchaser ("you") of the product and does not extend to any subsequent purchasers or owners of the product. The "original end user" is the first user to put the product into service in any fashion, but the term "original end user" shall exclude dealers. Dealers shall not be entitled to the benefits of the limited warranty.

It is your responsibility to establish the warranty period by verifying the original purchase date. Accordingly, to avoid dispute, you should return the warranty card within ninety (90) days after the date of purchase.

If you discover a defect, The Company will, at its option, repair or replace this product with a new or reconditioned product at no charge to you, provided you return it during the warranty period, with transportation charges prepaid. (You can obtain additional information by contacting a Customer Service Representative at the telephone printed on the certificate.) In the event that an alternate product is unavailable, The Company will refund the cost of goods at a pro-rated amount. To each product returned for warranty service, please attach your name, address, telephone number, and a copy of the bill of sale bearing the appropriate serial numbers as proof of date of original retail purchase, as well as a detailed description of the problem for which service is requested. Prior to returning the product, you must obtain from The Company a Return Merchandise Authorization Number (RMA#). You are responsible for packaging the product to be returned, and should take care that the product is packed in its original packaging. If the repairs are covered by the Limited Warranty and if the product was properly shipped to The Company, The Company will pay the return shipping charges.

This warranty applies only to hardware products manufactured by The Company that can be identified by The Company's trademark, trade name, or logo affixed to them. This warranty does not cover: damage resulting from accident, misuse, abuse, or neglect and/or damage during any type of transportation resulting from improper packaging; damage to any product which has been altered in any fashion, including the alteration or removal of any serial number; damage resulting from causes other than product defects, including and not by way of limitation, lack of technical skill, competence, or experience of the user, and/or failure to use the product in accordance with the instructions provided in the User's Manual; and service performed by an unauthorized person or entity.

All computer software either sold and/or licensed to a purchaser or user is done so on an "as is" basis. The only warranties relating to such software, if any, are provided by the Master Licensor of such software and are set forth in the User's Manual. The entire risk as to the quality and performance of such software is with the purchaser or user. Should such software prove defective following its purchase the purchaser or user, as the case may be (and not The Company) assumes the entire cost of all necessary servicing or repair.

Any implied warranties including fitness for use and merchantability are limited in duration to the period of the expressed warranty set forth above. The remedies provided under this warranty are exclusive and in lieu of all others.

The Company hereby expressly disclaims liability and shall not be responsible for incidental, consequential and contingent damages of any kind or nature, including, without limitation: damages to persons or property, whether a claim for such damages is based upon warranty, contract, tort or otherwise; damages due to or arising out of the loss of data; or lost profits.

The Company shall not be responsible for any damages caused by the presence of error or omission in any so-called "foreign language version" of its manuals, instructions or related materials.

SCM Microsystems, Inc., Retail Brands Group — 20 Carter Drive — Guilford, CT 06437 USA

USER'S MANUAL



SCM Microsystems, Inc. is a leading supplier of solutions that open the Digital World by enabling people to conveniently access digital content and services. SCM Microsystem's advanced silicon solutions, hardware and software enable secure exchange of electronic information for digital applications from e-commerce to broadband content delivery by providing controlled access points to platforms such as PCs, digital cameras, and digital television set-top boxes. Known as the premier supplier to OEM companies around the world, SCM Microsystems also serves the retail market through its Dazzle and Microtech product brands. Global headquarters are in Fremont, CA - USA, with European headquarters in Munich, Germany. Operations for the company's Retail Brands Group are in Guilford, CT - USA. Operating hours are Monday through Friday from 8:00 A.M. to 6:00 P.M. (U.S. Standard Time) with Technical Support from 8:00 A.M. to 9:00 P.M. (U.S. Standard Time).

SCM Microsystems, Inc.
Retail Brands Group
20 Carter Drive
Guilford, 06437 USA

Tel: 203-315-4200
Fax: 203-483-5106
Website: www.Scmmicro.com

Dazzle*

USER'S MANUAL

Copyright Information

The contents of this manual are copyrighted by SCM Microsystems, Inc. and may not be reproduced in whole or in part without written permission of SCM Microsystems, Inc. The same proprietary and copyright notices must be affixed to any permitted copies as were affixed to the original. This exception does not allow copies to be made for others, whether or not sold, but all of the material purchased (with all backup copies) may be sold, given or loaned to another person. Under the law, copying includes translating into another language or format. You may use the software on a single computer owned by you and extra copies cannot be made.

Third-party products mentioned are in most cases for informational purposes only and constitute neither an endorsement nor a recommendation. SCM Microsystems, Inc. assumes no responsibility with regard to the performance or use of the products.

Product specifications and information contained herein are subject to change without notice.

© Copyright 2002 SCM Microsystems, Inc. All rights reserved. Manual version 2.2 — 1.17.02 SYS-JB

Trademarks

Dazzle and the Dazzle insignia are registered trademarks of SCM Microsystems, Inc.

Microsoft, Windows, the Windows Logo, and MS-DOS are registered trademarks of Microsoft Corporation.

Apple, Macintosh, and Mac OS are registered trademarks of Apple Computer, Inc.

Mac and iMac are trademarks of Apple Computer, Inc.

CompactFlash is a trademark of SanDisk Corp. and is licensed royalty-free to the CFA (CompactFlash Association) which in turn will license it royalty-free to CFA members.

Secure Digital is a trademark of The Secure Digital Association.

SmartMedia and SSFDC is a trademark of Toshiba Corp.

MultiMediaCard is a trademark of MultiMediaCard Association.

Microdrive is a trademark of IBM Corp.

Memory Stick and MagicGate are trademarks of Sony Corp.

All other company names and product names are trademarks or registered trademarks of their respective owners.

For more information contact:

SCM Microsystems, Inc.
Retail Brands Group
20 Carter Drive
Guilford, 06437 USA

Tel: 203-315-4200

Fax: 203-483-5106

Web site: www.Scmmicro.com