

STAY CONNECTED - ANYWHERE YOU GO

- View & record anytime, anywhere
- Control with Smartphone / Tablet App
- Dual lens for enhanced day & night video
- Event Push notifications
- Easy 3-step set-up



DUAL LENS TECHNOLOGY



RECORD, PLAYBACK & SHARE.

Record directly to the camera, your smartphone, tablet, PC or Mac. Multiple recording options, no recurring fees.*

DUAL MOTION DETECTION.

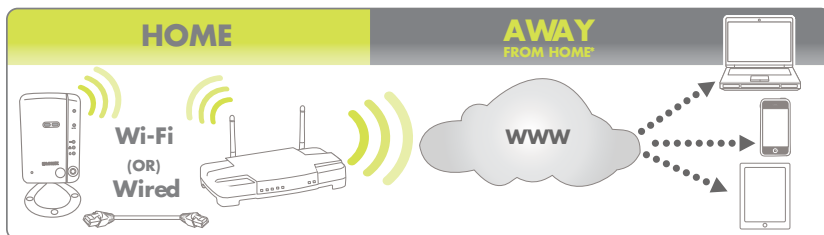
Advanced audio & motion sensors with smart video motion detection for improved alert accuracy.

DUAL LENS TECHNOLOGY.

One lens for day time operation and one lens for night time observation provides clean and crisp video.

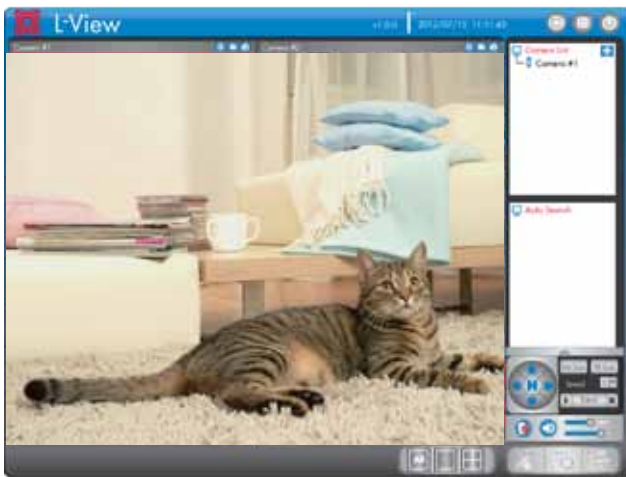
QUICK SETUP.

Activate your camera by simply scanning a QR code with your smartphone or tablet.



▶ FEATURES

- iOS, Android, PC and Mac compatible*
- Wi-Fi & wired internet connectivity
- Easy connection to Wi-Fi networks with WPS¹
- Night vision up to 30ft with single high-power IR LED²
- microSD recording & playback supported³
- Dual motion detection : PIR & video
- Sound activated alerts
- Push notification of events & email alerts with snap shot attachment
- Bandwidth-efficient VGA (640x480) resolution
- H.264 video compression
- Two-way audio supported⁴
- Flexible indoor mounting (counter, wall, ceiling)



PC Viewing Application. (PC is not included)



Mobile Application - iPad, iPhone & Android App shown.
(tablet and mobile phones are not included)

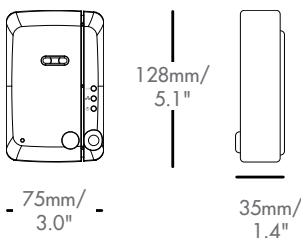
● SPECIFICATIONS

Mode:	Day & Night	Security:	Web management username/password protection
Power:	DC 5V, 1A (USB)		Video display ID/password protection
Processors:	RISC CPU, hardware video processing and compression.		WiFi WEP and WPA/WPA2 security mode
Network interface:	Ethernet 10BaseT/100BaseTX, Auto-MDIX, RJ-45	Installation, management and maintenance:	Plug & play by ID/password.
Wireless interface:	IEEE 802.11n 90 - 150 Mbps		Video management software-LView for video access
	IEEE 802.11g 6 - 54 Mbps		Firmware upgrades Push Notification
	IEEE 802.11b 1 - 11 Mbps		L-View SW upgrade Push Notification
Transmit power:	14.5dBm typically @ 802.11g	Web browsing:	Built-in web server for standard web browser access
	17.5dBm typically @ 802.11b		Video display on IE browser
Receiver sensitivity:	54Mbps: Typical -73dBm @ 10% PER		Video snapshot on any browser
	11Mbps: Typical -86dBm @ 10% PER	Supported protocols:	IPv4, HTTP, TCP, ICMP, RTSP, RTP, UDP, RTCP, SMTP, SNMP, FTP, DHCP, ARP, DNS, PPPoE, etc.
Antenna gain:	0.01 dBi	Accessories:	Power adaptor, camera bracket, RJ45 Ethernet cable, quick installation guide, CD with installation software and User's Manual.
Image sensor:	RGB VGA 1/4 inch CMOS	Video management software:	Surveillance software for viewing and archiving
	Day and night separate sensors Automatic exposure control, automatic white balance, automatic gain control, automatic brightness control.	Users	Up to 20 simultaneous unicast users (depends on video settings and internet bandwidth)
PIR sensor:	Effective distance – 7 meters	Alarm and event management:	Events triggered by PIR and sound detection
Light sensitivity:	0.2 Lux (IR LED off)		Email/ftp alarm message
	0 Lux (with 9 meters IR LED on)		Push notification on supported mobile devices.
	Automatically turn on the IR LED on low light environment.	Dimensions:	75 x 35 x 128mm/3.0 x 1.4 x 5.1" (W x D x H)
Lens:	3.2 mm, F2.0, viewing angle: 60.3°, fixed iris.	Weight:	0.28kg/0.62lbs (including camera bracket)
	focus range: 30 cm to infinity	Approvals:	EMC - CE, FCC Part 15 Subpart B Class B
Buttons:	Day and night separate lens		Wireless RF - CE, FCC Part 15 Subpart C
	One reset button, to factory default settings	Operating conditions	Power supply: CE, FCC, UL, EN 60950
	One WPS button for automatic WiFi setup		0-50 °C
Indicators:	One LED for Internet connection status indication		Humidity 20 – 80% RH (non-condensing)
	One LED for Ethernet connection indication		
	One LED for SD card recording indication		
Video compression:	H.264, baseline profile level 3.1		
Video streaming:	Separate frame rate/resolution/bandwidth settings for PC and mobile.		
Resolution:	VGA(640x480), QVGA(320x240), QQVGA(160x120)		
Bandwidth:	64k, 128k, 256k, 512k, 768k, 1M, 1.2M, 1.5M bps		
Frame rate:	1~5, 10, 15, 20, 25, 30 fps		
Audio:	Built-in microphone for audio monitoring		
	Speaker jack for external speaker		
	Audio compression: G.711		

● PRODUCT INFORMATION

MODEL	CONFIGURATION	PACKAGE	W x D x H	WEIGHT	CUBE	UPC Code
LNC101	Wireless Network Camera	Retail Giftbox	304 x 243 x 78mm/ 12 x 9.6 x 3.1"	0.6 kg/1.43 lbs	0.005 CBM x 0.2 CBF	7-78597-00101-3
Includes:	1 x IP Camera, 1 x Camera Bracket, 1 x Ethernet cable, 1 x Power adaptor, User Manual, Quick Start Guide, CD					

Dimensions:



● DISCLAIMERS

1. Compatible with WPS enabled routers (not included).
2. Infrared illumination range under ideal conditions. Actual range and clarity may vary depending on scene/object reflection and camera application.
3. microSD Card not included (supports up to 32GB).
4. External speaker required, not included.

Lorex Technology Inc.

250 Royal Crest Court
Markham, Ontario L3R 3S1
Canada

901 Elkridge Landing Road, Suite 100
Linthicum, Maryland 21090
USA

www.lorextechnology.com

©2013 Lorex Technology Inc.
As our product is subject to continuous improvement, Lorex Technology & subsidiaries reserve the right to modify product design, specifications & prices without notice and without incurring any obligation. E&OE