

TEW-2K1

**11 Mbps 802.11b Wireless Router
Quick Installation Guide**

**Guide d'installation rapide pour le
Routeur Sans Fil 11Mbps 802.11b**

**Schnell Anleitung
802.11b Wireless Router**

**Guía de Instalación Rápida del
Enrutador Inalámbrico 802.11b de 11Mbps**

Version 05.20.04



TRENDnet[®]
TRENDware, USA
What's Next in Networking

Table of Contents

English	1
1. Prepare for Installation	1
2. Install Hardware	3
3. Install Wireless Configuration Utility	4
4. Install Drivers	7
5. Configure the Router	18
Troubleshooting.....	26

English QIG

1. Prepare for Installation

Thank you for purchasing the TEW-2K1. This 11Mbps 802.11b Wireless Router / PC Card Kit will enable you to connect to and share your Cable or DSL broadband Internet connection with 802.11b wireless and wired computers.

This guide will help you set up and configure your wireless PC card and router. Following the installations should be quick and easy. If you run into problems, please refer to the Troubleshooting section or the more detailed installation procedures on the User's Guide CD-ROM. If you need further technical support, please visit www.TRENDNET.com or call by phone.

Verify Package Contents

Please make sure you have everything in the box:



Collect Internet Service Provider (ISP) Information

During the installation of your Wireless Router, the Quick Setup application will ask you to specify your ISP connection type. Therefore, please verify your Cable or DSL Internet broadband connection type with your ISP and ensure you have all the information for one of the following connection types:

A. Dynamic IP Cable Connection

Nothing required. IP address will automatically be assigned by the ISP.

B. Static or Fixed IP Cable Connection

Internet IP Address: _____ (eg. 215.24.24.129)

Subnet Mask: _____

Gateway IP Address: _____

Primary DNS: _____

Secondary DNS: _____

C. PPPoE DSL Connection

Login Name: _____

Password: _____

D. PPTP DSL Connection

Login Name: _____

Password: _____

2. Install Hardware

Router (TEW-231BRP)

1. Turn off your Cable/DSL Modem and Computer.
2. Attach the antenna to the connector on the side of your AP/Router.
3. Connect the RJ-45 Ethernet cable from your Cable or DSL modem's Ethernet port to the WAN port on the TEW-231BRP.
4. Turn on your Cable/DSL Modem. Once the Cable/DSL Modem is on, connect the included power adapter to your AP/Router and to a power outlet.
5. Turn on your Computer.



PC Card (TEW-226PC)

The TEW-226PC Wireless PC Card is designed to operate in Windows 98, Windows ME, Windows 2000, and Windows XP.

Minimum Hardware Requirements

1. Laptop with an available 32-bit CardBus
2. 300 MHz processor and 32 MB of memory (Recommended)
3. Properly installed CardBus Controller

<Important> DO NOT install the adapter in the computer. Please follow the instructions below to install the utility and driver before installing the adapter in the computer.

3. Install Wireless Configuration Utility

Windows 98SE/ME/2000/XP

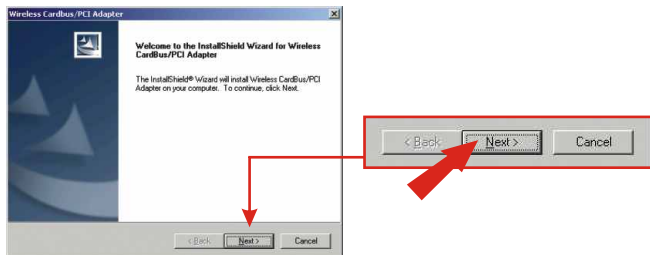
1. Insert the TEW-226PC/TEW228PI CD-ROM into your computer's CD-ROM drive; the installation menu window will appear automatically. If the window does not appear automatically, click **Start**, click **Run**, and type **E:\Autorun.exe** in the text-field. Click **OK**.

NOTE: Replace “E” in “E:\Autorun.exe” with whichever letter is assigned to your CD-ROM drive.

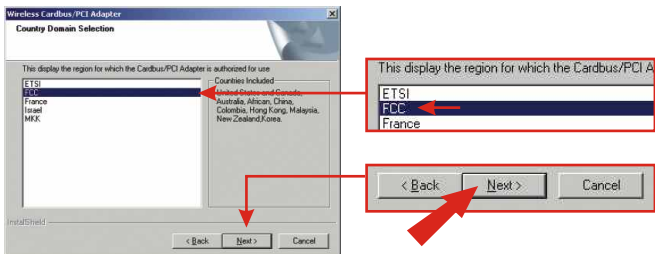
2. On the Installation Menu, click **Install Utility**.



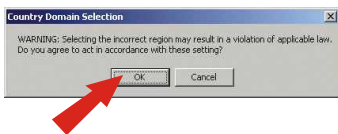
3. Click **Next**.



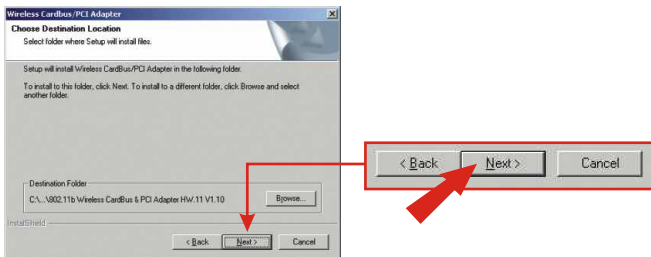
4. Select the region and click **Next**.



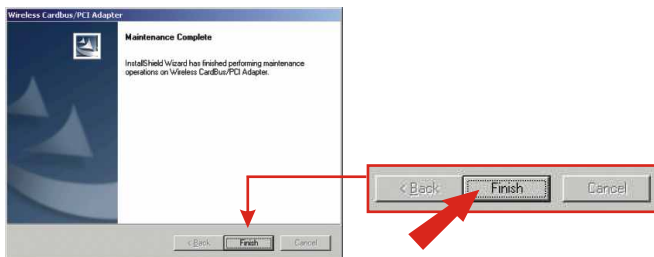
5. Click **OK**.



6. Click **Next** to start installing.



8. Click Finish.



NOTE: For Windows 98SE/ME, select "No, I will restart my computer later," and click Finish.

9. Click **Exit** on the Installation menu screen.

Install Hardware

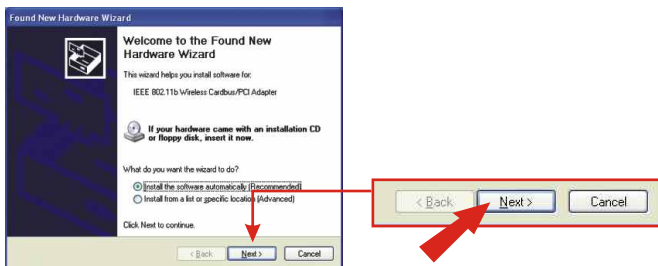
1. Shut down your computer.
2. Insert the PC Card firmly into your notebook PC's open PC Card slot. Only the plastic end-piece should protrude from the slot.
3. Reboot your computer.



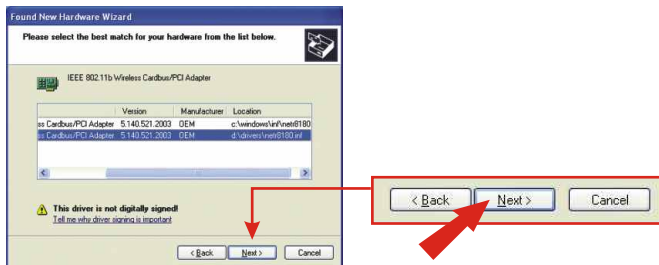
4. Install Drivers

Windows XP

1. After your computer reboots, the “Found New Hardware Wizard” will appear. Verify that **Install the software automatically** is selected and that the TEW-226PC/228PI CD-ROM is in your CD-ROM drive. Then, click **Next**.

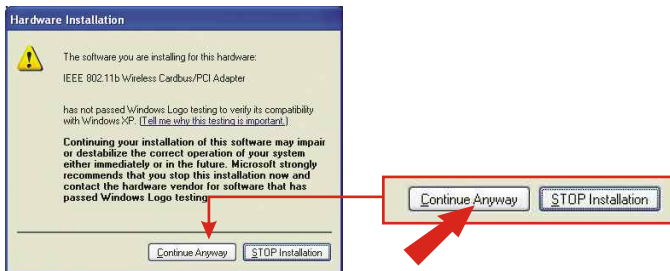


2. When you are prompted to choose a driver from a list of compatible drivers, choose the one that is located in the TEW-421PC/423PI CD-ROM's Windows XP folder, and click **Next**.

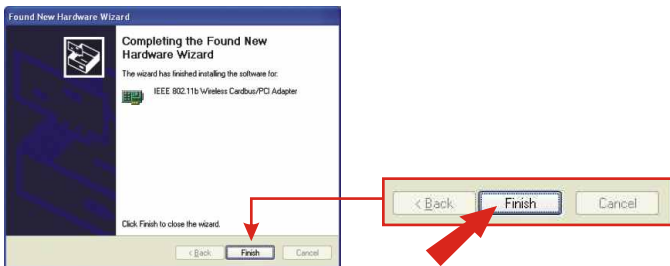


3. A warning message will tell you that the device you're installing has not yet been certified for Windows XP compatibility. Click **Continue Anyway**.

NOTE: TRENDnet's Wireless Adapter drivers have been fully tested in all supported Windows Operating Systems and have been found to provide assured compatibility.



4. The "Found New Hardware Wizard" will tell you that it has finished installing the software for your IEEE 802.11b Wireless Cardbus/PCI Adapter. Click **Finish**.



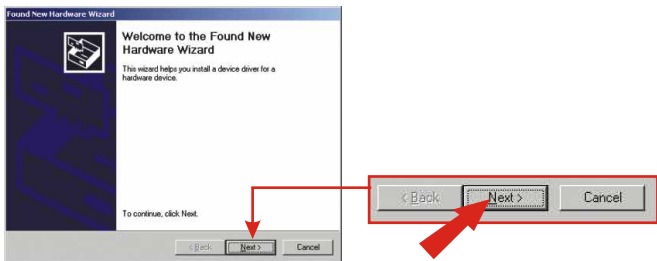
5. Double-click the wireless computer icon in your system tray (next to the clock in the bottom right corner of your screen).



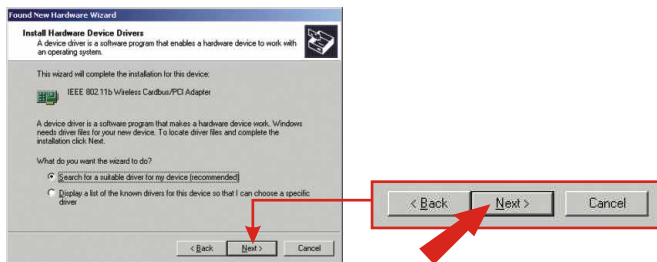
6. On the Wireless Configuration Utility window, click the Network tab.
7. Select the wireless network SSID to “default”, then, click **Connect**.
8. Go to Verify Connection.

Windows 2000

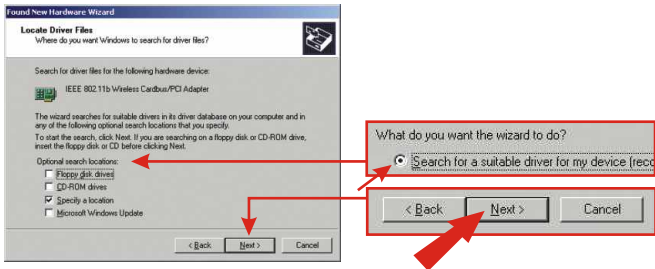
1. After your computer reboots, the “Found New Hardware Wizard” will appear. Click **Next**.



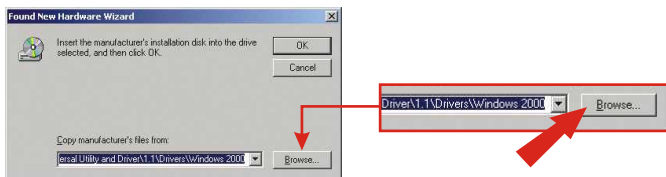
2. Ensure that Search for a suitable driver for my device is selected and that the TEW-226PC/228PI CD-ROM is in your CD-ROM drive. Then, click **Next**.



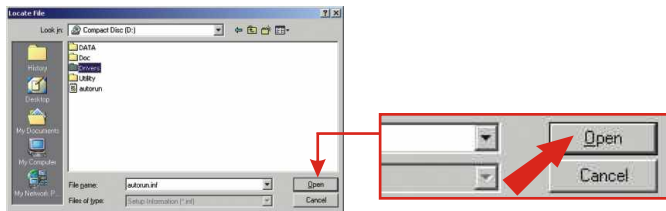
3. On the next screen, select **Specify a location**, and click **Next**.



4. Click the **Browse** button on the window that pops up.



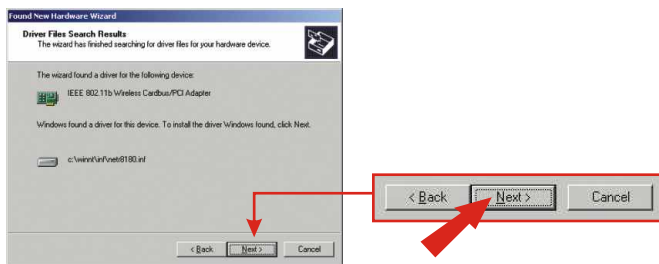
5. Double-click your CD-ROM drive, double-click Drivers, and select "NETR8180.INF", and click **Open**.



6. Click **OK**.

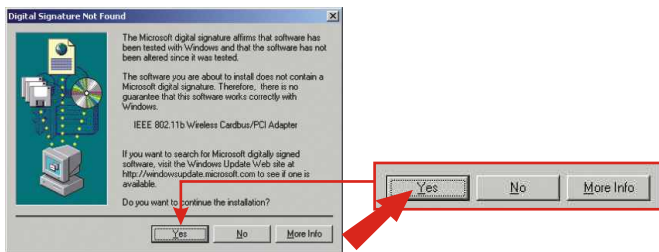


7. Click **Next**.

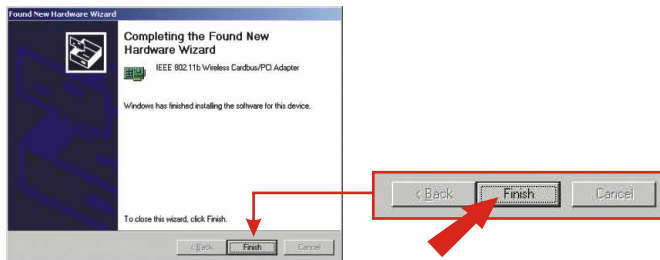


8. A message will tell you that the driver you're about to install “does not contain a digital signature” and will ask you if you want to continue the installation. Click **Yes**.

NOTE: TRENDnet's Wireless Adapter drivers have been fully tested in all supported Windows Operating Systems and have been found to provide assured compatibility.



9. The “Found New Hardware Wizard” will tell you that it has finished installing the software for your new device. Click **Finish**.



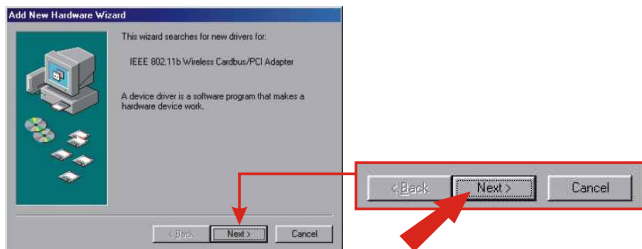
10. Double-click the wireless computer icon in your system tray (next to the clock in the bottom right corner of your screen).



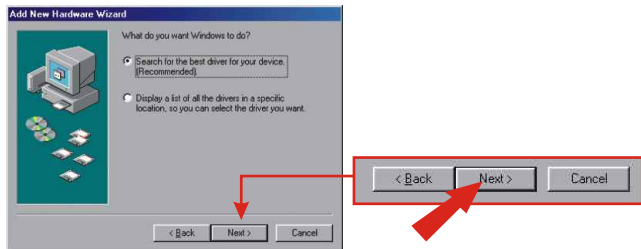
11. On the Wireless Configuration Utility window, click the Network tab.
12. Select the wireless network SSID to “default”, then, click **Connect**.
13. Go to Verify Connection.

Windows 98SE/ME

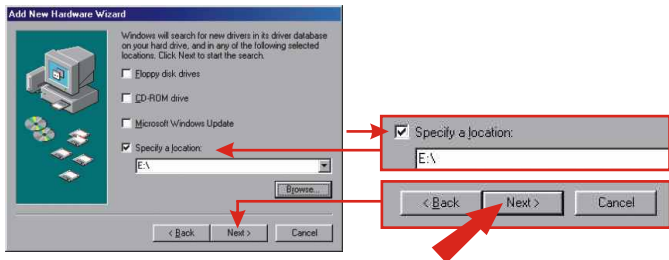
1. After your computer reboots, the “Add New Hardware Wizard” will appear. Click **Next**.



2. Select **Search for the best driver for your device** and click **Next**.

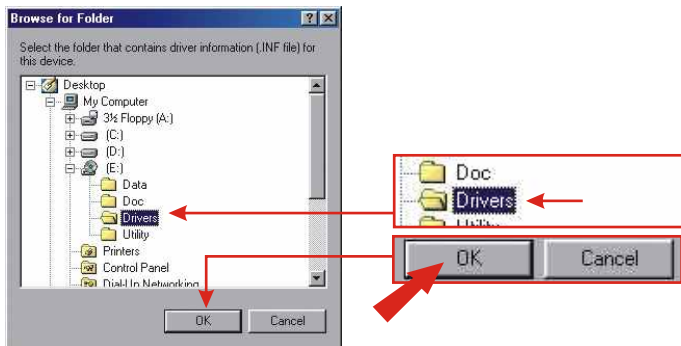


3. Select **Specify a location**, and click **Browse**.



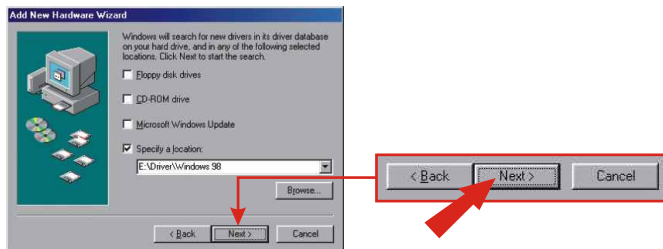
4. If the TEW-226PC/228PI CD-ROM is not in your CD-ROM drive, put it into your CD-ROM drive now. From the "Browse for Folder" window that has appeared, double-click the icon for the CD-ROM drive containing the TEW-226PC/228PI CD-ROM.

5. Double-click the TEW-226PC/228PI CD-ROM's **Driver** folder; then click **OK**.

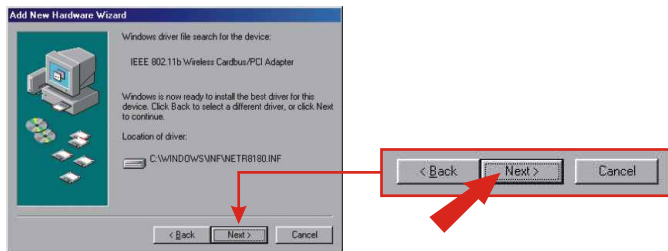


6. Click **Next**.

NOTE: For Windows ME, select the E:\Driver\Windows ME folder.



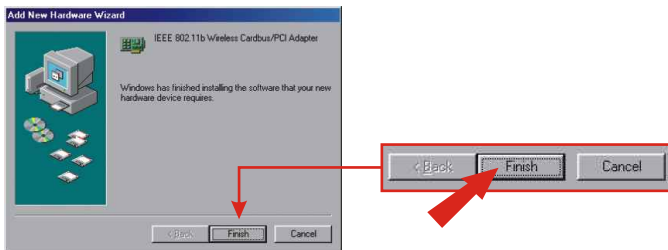
7. Click **Next**.



8. You may be asked to insert your Windows 98/ME CD-ROM. If this is the case, insert your Windows 98/ ME CD-ROM, and click **OK**.



9. The "Add New Hardware Wizard" will tell you that it has finished installing the software for your IEEE 802.11b Wireless Cardbus/PCI Adapter. Click **Finish**.



10. Click **Finish**.

11. Windows will ask you if you want to restart your computer. Click **Yes**.

NOTE: If this prompt does not appear, you must manually restart your computer.



12. After the computer restarts, double-click the wireless computer icon in your system tray (next to the clock in the bottom right corner of your screen).



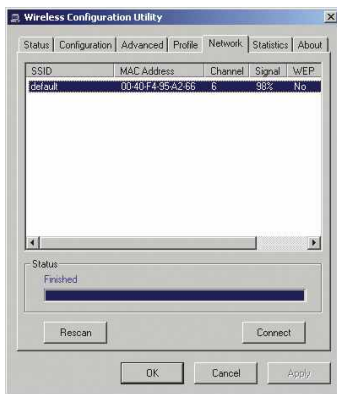
13. On the Wireless Configuration Utility window, click the **Network** tab.
14. Select the wireless network SSID to “**default**”, then, click **Connect**.

Verify Connection

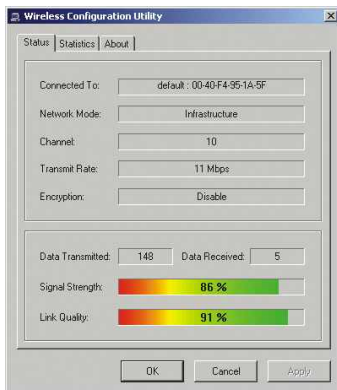
Note: The wireless router TEW-231BRP has the following factory default settings:

SSID: **default**
WEP: **Disable**
Channel: **6**

If you cannot see the “**default**” SSID, make sure your AP/Router is connected and is turned on; then, click **Rescan**.



The wireless connection has been established, click the **Status** tab of the Wireless Configuration Utility. If the Status page displays “Signal Strength” and “Link Quality” information, your card’s wireless configuration is complete.

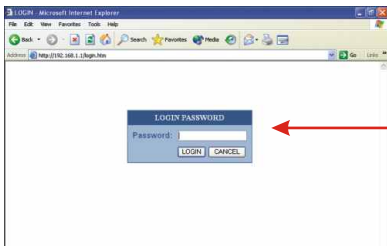


Congratulations! You have finished installing the Wireless PC Card. Continue to Section 5 of this Quick Installation Guide to configure your wireless router.

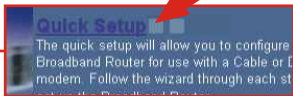
5. Configure the Router

1. Open your web browser and type **http://192.168.1.1** into the Address box and press the **Enter** key.
2. The login screen will appear; click **LOGIN** to access the **Quick Setup**.

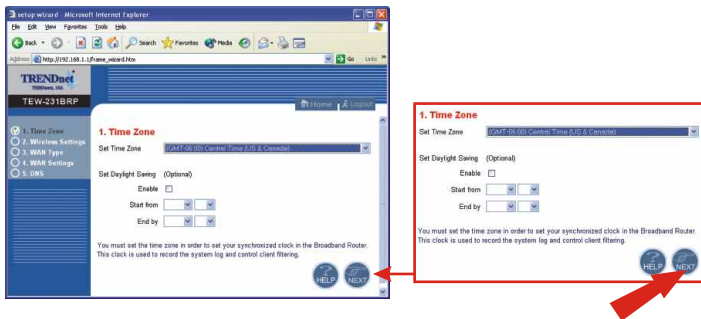
NOTE: By default, no password has been set on the wireless router. To reset the password on the wireless router, please refer to the User's Guide CD-ROM.



3. Click on **Quick Setup** to configure your Wireless Router for Broadband Internet access.



4. Click on the dropdown menu to select the appropriate time zone. If your region runs on Daylight Savings Time, you should enable the “Set Daylight Saving” option and input the dates and times when Daylight Savings Time goes into and out-of effect. Then click **Next**.

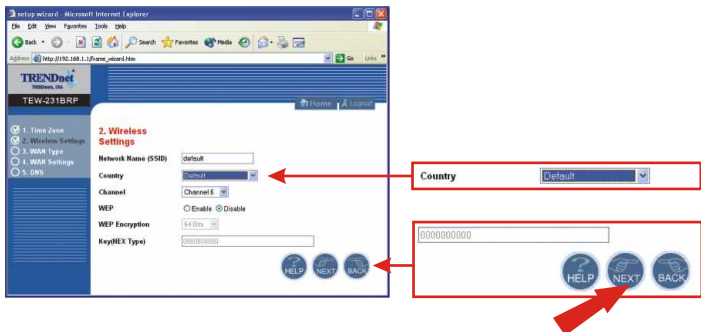


5. Click on the dropdown menu to select your country. (Note: “USA” by default).

NOTE: After selecting your country, a WARNING pop-up will appear to inform you that choosing an incorrect country may be in violation of applicable laws. Click **OK**.

6. Your wireless configuration is complete. Click **Next**.

NOTE: If you wish to enable the WEP security feature, refer to the User's Guide on the included CD-ROM.



7. Select the appropriate WAN connection type by clicking on Dynamic IP, Static IP, PPPoE, or PPTP.

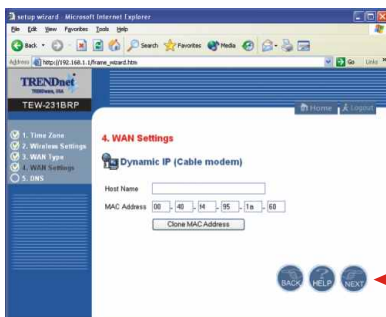


to choose this option and enter the required information.

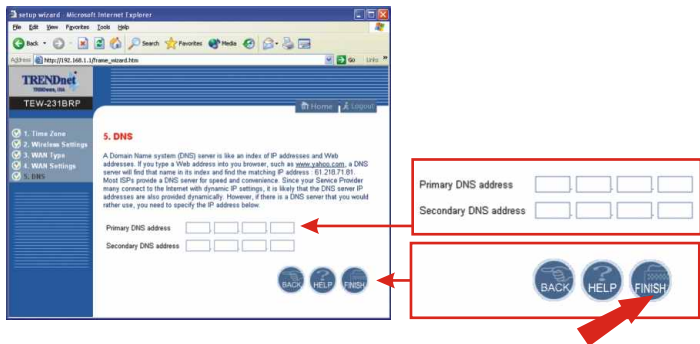


Dynamic IP

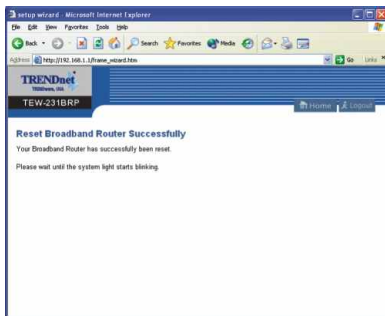
1. Specify the Host Name (if any) and Clone the MAC Address (if required by your ISP). Click **Next**.



2. Specify Primary and Secondary DNS addresses if you wish to use DNS addresses other than your ISP-provided DNS addresses. Click **Finish**.

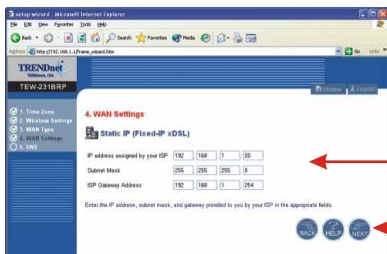


3. To verify your Internet connection, type <http://www.TRENDNET.com> in your browser's address bar, and hit **Enter**. If the website appears, your router is configured properly.



Static or Fixed IP Cable Connection

1. Enter the IP Address, Subnet Mask, and ISP Gateway Address provided by your ISP. Click **Next**.



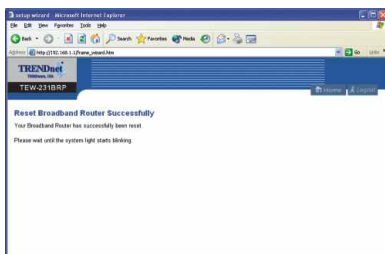
IP address assigned by your ISP	192	168	1	20
Subnet Mask	255	255	255	0
ISP Gateway Address	192	168	1	254



2. Specify Primary and Secondary DNS addresses if you wish to use DNS addresses other than your ISP-provided DNS addresses. Click **Finish**.



3. To verify your Internet connection, type <http://www.TRENDNET.com> in your browser's address bar, and hit **Enter**. If the website appears, your router is configured properly.



PPPoE

1. Enter your PPPoE User Name and Password, and retype your password. Then, click **Next**.

4. WAN Settings

PPPoE (Dial-Up xDSL)

User Name:

Password:

Please retype your password:

Static Name: (optional)

IP Address: (optional)

Primary DNS Address: (optional)

Secondary DNS Address: (optional)

MTU (Kbit/MB): (optional)

Maximum Idle Time: (optional)

Connect mode select: Always-on Manual Connect-on-demand

Enter the User Name and Password required by your ISP in the appropriate fields. If your ISP has provided you with a Service Name, enter it in the Service Name field, otherwise leave it blank.

BACK HELP NEXT

2. Specify Primary and Secondary DNS addresses if you wish to use DNS addresses other than your ISP-provided DNS addresses. Click **Finish**.

5. DNS

A Domain Name System (DNS) server is like an index of IP addresses and Web addresses. If you type a Web address into your browser, such as www.pdconnect.com, a DNS server will find that name in its index and find the matching IP address, 65.205.71.81.

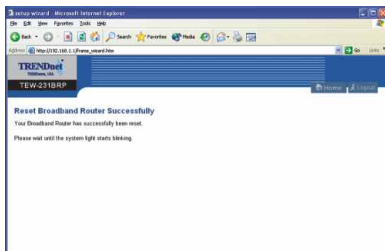
Most ISPs provide a DNS server for speed and convenience. Since your Service Provider may connect to the Internet with dynamic IP settings, it is likely that the DNS server IP addresses are also provided dynamically. However, if there is a DNS server that you would rather use, you need to specify the IP address below.

Primary DNS address:

Secondary DNS address:

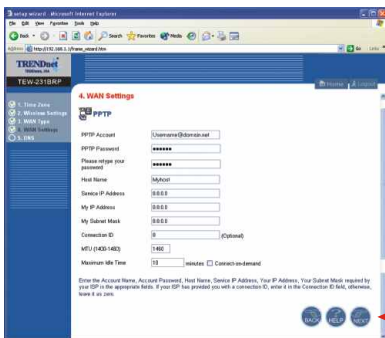
BACK HELP FINISH

- To verify your Internet connection, type `http://www.TRENDNET.com` in your browser's address bar, and hit **Enter**. If the website appears, your router is configured properly.

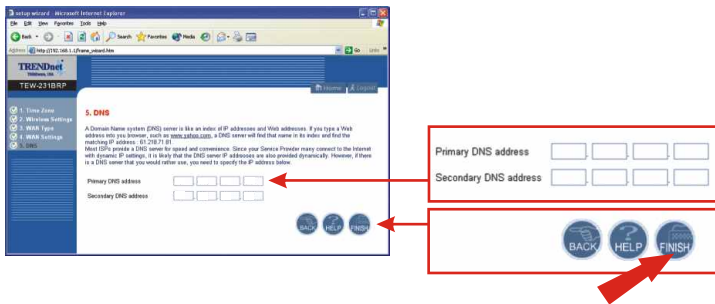


PPTP

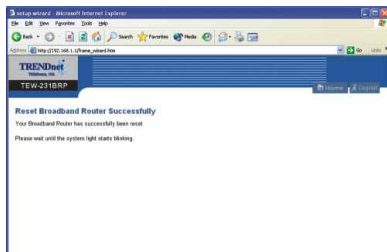
- Enter your PPTP User Name and Password, and retype your password. Then, click **Next**.



2. Specify Primary and Secondary DNS addresses if you wish to use DNS addresses other than your ISP-provided DNS addresses. Click **Finish**.



3. To verify your Internet connection, type <http://www.TRENDNET.com> in your browser's address bar, and hit **Enter**. If the website appears, your router is configured properly.



NOTE: Open a web browser and try to access internet. If you still have problems, retry the steps or contact our technical support.

Q1. I completed all the steps in the quick installation guide, but my card isn't connecting to my wireless router. What should I do?

A1. You should first verify that the Network SSID matches your wireless router SSID. If they already match, you should check your TCP/IP properties to ensure that Obtain an IP address automatically is selected. Refer to your Windows User's Manual if you are unable to locate your TCP/IP properties.

Q2. Windows is unable to recognize my hardware. What should I do?

A2. Make sure your computer meets the minimum requirements as specified in Section 1 of this quick installation guide. Also, you must install the wireless configuration utility (as described in Section 2) BEFORE you physically install your network card. Lastly, you may consider moving the card to a different PCI/PC Card Slot.

Q3. I cannot open the wireless configuration utility. What should I do?

A3. Go to your device manager (control panel >>> system) to make sure the adapter is installed properly. If you see a networking device with a yellow question mark or exclamation point, you will need to reinstall the device and/or the drivers.

Q4. I specified the IP address, 192.168.1.1 in my internet browser, but an error message says "The page cannot be displayed". How can I get into the TEW-231BRP web configuration page?

A4. Please check your hardware and TCP/IP settings again by following the instructions in section 1-3, make sure the Power, WAN, and on the LAN lights on the Router's front panel are on, and verify that the TCP/IP configuration is correct. Then try accessing 192.168.1.1 again using your web browser.

Q5. I am not sure what type of Internet Account Type I have for my Cable/DSL connection, How do I find out?

A5. You can simply contact your Internet Service Provider's (ISP) Customer Service or Technical Support Department for the correct information.

Q6. I set up my internet connection type and saved it, but I still cannot connect to the Internet. Why?

A6. Option 1: Go to the Status section of the configuration page, and click on the Connection Detail button. Click on the Release/Renew button to allow the router to refresh the connection with your ISP. Then try browsing a website such as <http://www.trendnet.com> again with your Internet browser.

Option 2: Please power down all the equipment including Cable/DSL modem, Router and your PC. Power on the Cable/DSL modem and wait 60 seconds, then power on the router followed by your PC. This simple power cycle normally helps the router to find your Internet connection. Then try browsing a website such as <http://www.trendnet.com> with your web browser.

If you still encounter problems, please refer to the User's Guide CD-ROM or contact technical support.

Contact Technical Support

Telephone: +1-310-891-1100

Fax: +1-310-891-1111

Website: www.TRENDNET.com

E-mail: support@trendware.com

Technical Support Hours

7:00AM ~ 6:00PM, Monday through Friday

Pacific Standard Time (except holidays)



Product Warranty Registration

Please take a moment to register your product online.
Go to TRENDware's website at <http://www.TRENDNET.com>

TRENDware International, Inc.
3135 Kashiwa Street
Torrance, CA 90505

<http://www.TRENDNET.com>