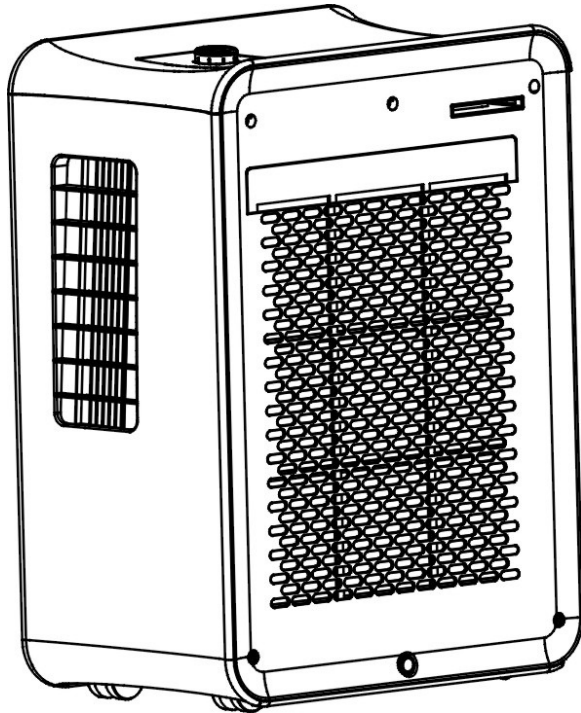


# ewt<sup>®</sup>

**MODEL:**

**EWTC9**

**INSTRUCTION MANUAL**



**PORTABLE AIR CONDITIONER**

## **IMPORTANT INFORMATION**

**Carefully read this instruction manual before you install or use your portable air conditioner. Please retain this manual for product warranty and for future reference.**

### **CAUTION**

1. Make sure the inlet and outlet vents are never blocked.
2. Ensure the appliance is on a stable, even surface when operating to avoid water leakage.
3. Do not operate this unit in an explosive or corrosive atmosphere.
4. When switched to cooling, only operate this unit in ambient temperatures between 17°C and 43°C.
5. Clean the air filter frequently to ensure efficient operation.
6. To prevent compressor damage when the unit has been operating and is turned off, please wait at least 3 minutes before restarting.
7. This unit needs to be plugged into a 220-240V ~ 50Hz AC, 10 Amp power outlet.
8. Do not use any extension cords with this unit.
9. This unit is for indoor operation only.
10. Open the adjustable air vent and extend the exhaust pipe (and drain pipe, if fitted) to the closest window before using.
11. Only ever have a professional technician, manufacturer or service agent replace a damaged power cord.
12. The batteries from the remote control must be removed and disposed of safely, before the appliance is scrapped.
13. This appliance is not intended for use by persons (including children) with reduced physical, sensory or mental capabilities, or lack of experience and knowledge, unless they have been given supervision or instruction concerning use of the appliance by a person responsible for their safety.
14. Children should be supervised to ensure that they do not play with the appliance.

### **Important.**

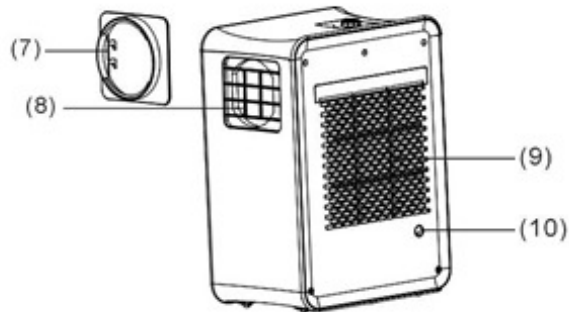
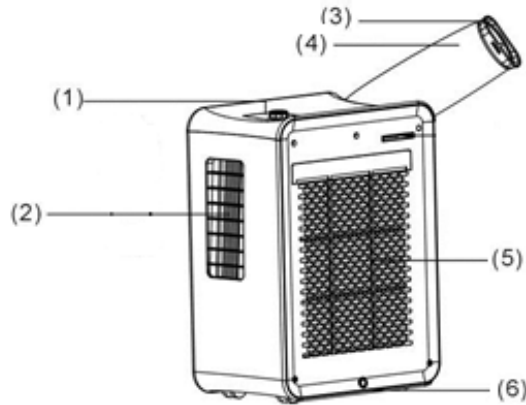
**The air conditioner must always be stored and transported upright. In case of doubt we suggest you wait for at least 24 hours before operation.  
(Please keep unit upright at all times)**

## PACKAGE CONTENTS

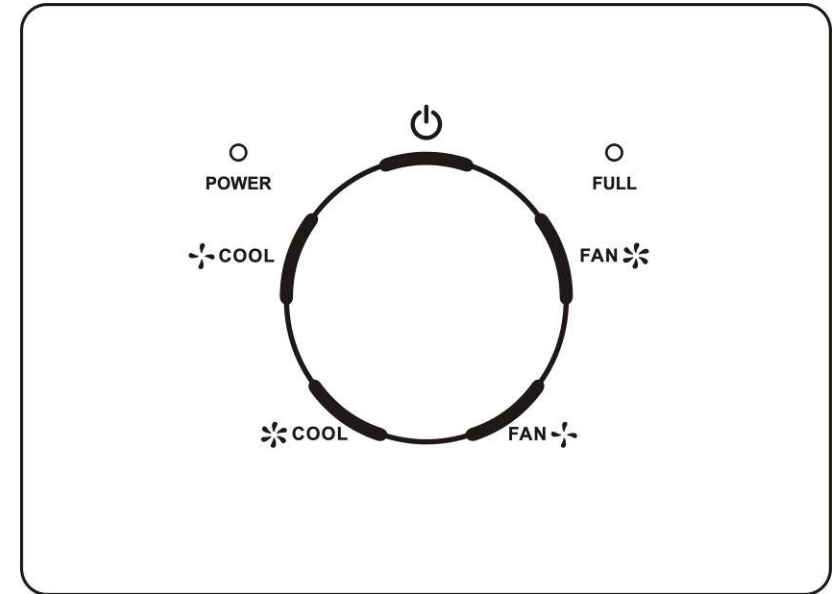
- Portable air conditioner
- User manual
- Extendable window kit

## PARTS

- Control panel
- Cool air outlet
- Exhaust hose connector
- Exhaust hose
- Hot air inlet
- Lower drain hose
- Hot air exhaust hose attachment
- Hot air outlet
- Cool air outlet
- Upper drain hose



## CONTROLS AND DISPLAY



### STARTING THE UNIT

- Turn the control knob to the "POWER/OFF" position.
- Plug the unit into a standard 10amp power supply.
- Turn the control knob to the "COOL" position. The "POWER" light will turn on while the unit is in operation.

### SWITCHING THE UNIT OFF

Turn the control knob to the "POWER/OFF" position.

### FUNCTION

**Low Fan Speed:** Turn the control knob to the "FAN" position (smaller fan), to operate the unit at low fan speed. The compressor will not be switched on in this function.

**High Fan Speed:** Turn the control knob to the "FAN" position (larger fan), to operate the unit at high fan speed. The compressor will not be switched on in this function.

**Low Cool Speed:** Turn the control knob to the “COOL” position (smaller fan), to operate the unit in low cool speed.

**High Cool Speed:** Turn the control knob to the “COOL” position (larger fan), to operate the unit in high cool speed.

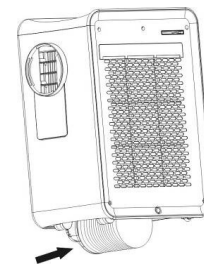
**Note:**

\* When the unit operates in cooling mode, the “POWER” light will be switched on.

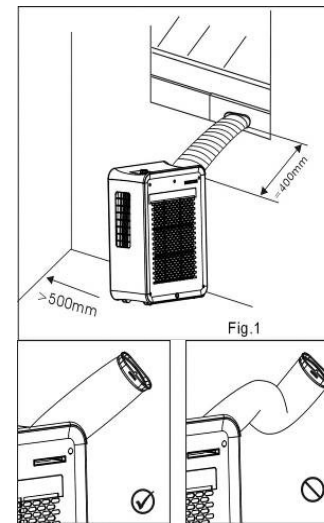
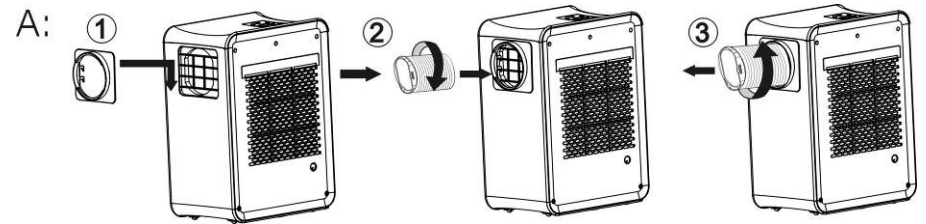
\* When the water tank is full, the “FULL” light will be switched on.

# INSTALLATION

## Unit Setup



1. Lift unit and remove the exhaust hose from the base.
2. Fit hot air exhaust hose to the unit as shown on diagram below (Fig.1)
3. Install exhaust hose by rotating it clockwise onto the hot air exhaust attachment (Fig. 2). Ensure it is fully inserted before use.
4. To remove, rotate in an anti-clockwise direction.



## Locating the unit.

Install the portable air conditioner in a flat location with adequate space to ensure the air inlets and outlets will not be blocked.

Keep a minimum clearance of 50cm from walls and other objects. Position the unit to allow the exhaust hose to reach a suitable window, as shown.

Avoid sharp bends or kinks in the exhaust hose.

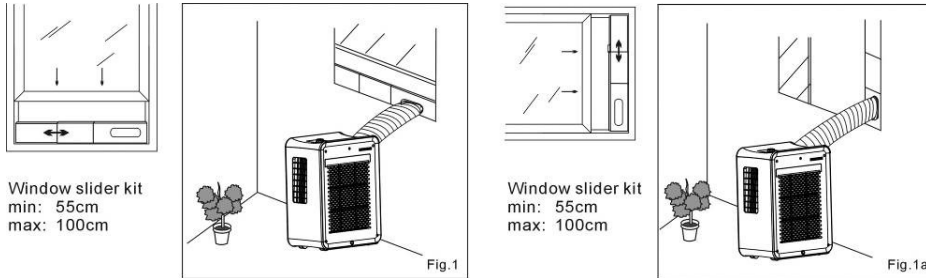
The optional adjustable window slider is included to ensure the exhaust hose is held in place (in the window) and prevents expelled hot air re-entering the room.

The appliance should not be used in damp areas such as a laundry or bathroom.

Do not place the unit where it will be in direct sunlight as it may overheat and turn off.

## ADJUSTABLE WINDOW SLIDER KIT

The adjustable window slider kit is installed as shown below.

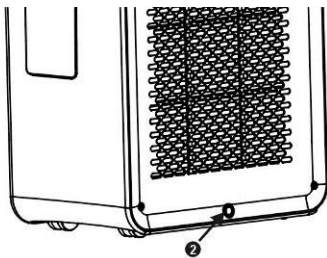


## WATER DRAIN

When the air conditioner is used, excess water condensation may be produced that will fill the water tank. This water is captured by an internal container. When this is full, the unit will stop working and the “FULL” indicator will illuminate.

This means the unit will need to be drained as follows:

1. Switch off and unplug the unit.
2. Move the unit to a suitable location to drain the water. Consider placing a small tray beside the outlet pipe to catch the drained water.
3. Remove the drain plug as per the image below. (Fig. 2)
4. Slightly tilt the unit to the rear to drain the water.
5. Replace the drain plug. Ensure the drain plug is fully fitted before use. Connect the exhaust hose to the window kit before the unit is switched back on.



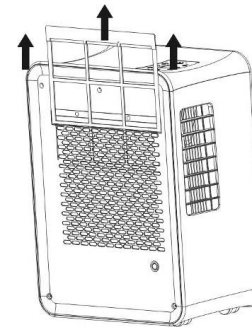
## MAINTENANCE

**WARNING: ALWAYS UNPLUG THE UNIT BEFORE MOVING OR CLEANING.**

## CLEANING

### Air filters

The air filters are located on the left and right side of the unit. To remove the air filters, please follow the arrow directions below by pulling out the filters in an upward direction. Clean only with warm soapy water.



### Cabinet

As with filters, clean only with warm soapy water.

## CARE OF THE UNIT

1. Only plug the unit into a suitable 220-240V~ 50Hz AC 10 AMP power supply.
2. Hold the plug when unplugging the unit, never pull on the cord.
3. Do not place the unit in direct sunlight. This can fade the plastic case.
4. Do not operate the unit in a confined space.
5. Do not place objects on top of the unit. This blocks the air outlet.
6. Do not place the unit where the air inlets or outlets may be blocked by curtains or furniture.
7. Keep the filters clean.

## OVERHEAT PROTECTION

This unit is fitted with an overheat prevention device. If the unit overheats it will automatically turn off. The unit can be restarted after 30 minutes.

## TROUBLE SHOOTING

Never try to repair or dismantle the air conditioner yourself. Unauthorized repairs may result in the loss of warranty and can endanger the user and their property.		
Problem	Cause	Solution
The air conditioner does not operate.	No power supply.	Connect to a functioning power supply socket and switch on.
	“FULL” indicator is shown, indicating the internal water container is full.	Empty the internal water container. (Refer to WATER DRAIN)
	The start timer function is active.	Press the POWER button to deactivate the TIMER function.
The air conditioner does not seem to operate efficiently.	The air conditioner is in direct sunlight.	Close the curtains.
	Windows or doors are open.	Close windows and doors.
	The filters are dirty.	Clean the filters.
	The air inlets or outlets are blocked.	Remove the blockage.
	The room temperature is below the set temperature.	Lower set temperature.
The air conditioner is noisy.	The air conditioner is not level.	Place the air conditioner on an even, solid surface.
The compressor does not work.	The overheat protection is activated.	Wait 30 minutes until the temperature has decreased, then restart the air conditioner. Note: Compressor operation begins 3 minutes after the unit is switched on.
The remote control does not function.	The distance between the remote control and the air conditioner is too far.	Move closer to the air conditioner. Aim the remote control directly at the control panel.
	The batteries are flat.	Replace the batteries.

**If you have any issues with your unit, please contact Glen Dimplex on 1300 556 816 for your nearest service agent. Proof of purchase is required at the time of service.**

## WARRANTY

The warranty period is 24 months from the date of purchase.

### **Glen Dimplex Australia Pty Ltd.    Glen Dimplex New Zealand Ltd.**

Unit 1, 21 Lionel Road.

38 Harris Road, East Tamaki,

Mount Waverley VIC 3149.

Manukau, Auckland 2013

Australia

New Zealand

Ph: 1300 556 816

Ph: (09) 274 8265

Fax: 1800 058 900

Fax: (09) 274 8472

Web: [www.dimplex.com.au](http://www.dimplex.com.au)

Web: [www.dimplex.co.nz](http://www.dimplex.co.nz)

## DISPOSAL



- Do not dispose of electrical appliances as unsorted municipal waste. Use separate collection facilities.
- Contact your local government for information regarding the collection systems available.
- If electrical appliances are disposed of in landfills or dumps, hazardous substances can leak into the ground water, polluting the food chain and damaging health and well-being.

## SPECIFICATION

Model No.	EWT C9
Power Source	220-240V~50Hz
Power Consumption (EN14511)	1083W
Cooling Capacity	1100W
Air Flow	280M <sup>3</sup> /H
Refrigerant	R410A
Min. room size	10m <sup>3</sup>
Max. room size	20m <sup>3</sup>
Dimensions (mm)	300Wx455Dx630H
Net Weight	24.0KG